



# Full wwPDB X-ray Structure Validation Report ⓘ

Aug 20, 2023 – 10:17 AM EDT

PDB ID : 2NX1  
Title : Structural and mechanistic changes along an engineered path from metallo to non-metallo KDO8P synthase  
Authors : Kona, F.; Xu, X.; Martin, P.; Kuzmic, P.; Gatti, D.L.  
Deposited on : 2006-11-16  
Resolution : 1.80 Å(reported)

This is a Full wwPDB X-ray Structure Validation Report for a publicly released PDB entry.

We welcome your comments at [validation@mail.wwpdb.org](mailto:validation@mail.wwpdb.org)

A user guide is available at

<https://www.wwpdb.org/validation/2017/XrayValidationReportHelp>

with specific help available everywhere you see the ⓘ symbol.

The types of validation reports are described at

<http://www.wwpdb.org/validation/2017/FAQs#types>.

---

The following versions of software and data (see [references ⓘ](#)) were used in the production of this report:

MolProbity : 4.02b-467  
Mogul : 1.8.5 (274361), CSD as541be (2020)  
Xtriage (Phenix) : 1.13  
EDS : 2.35  
Percentile statistics : 20191225.v01 (using entries in the PDB archive December 25th 2019)  
Refmac : 5.8.0158  
CCP4 : 7.0.044 (Gargrove)  
Ideal geometry (proteins) : Engh & Huber (2001)  
Ideal geometry (DNA, RNA) : Parkinson et al. (1996)  
Validation Pipeline (wwPDB-VP) : 2.35

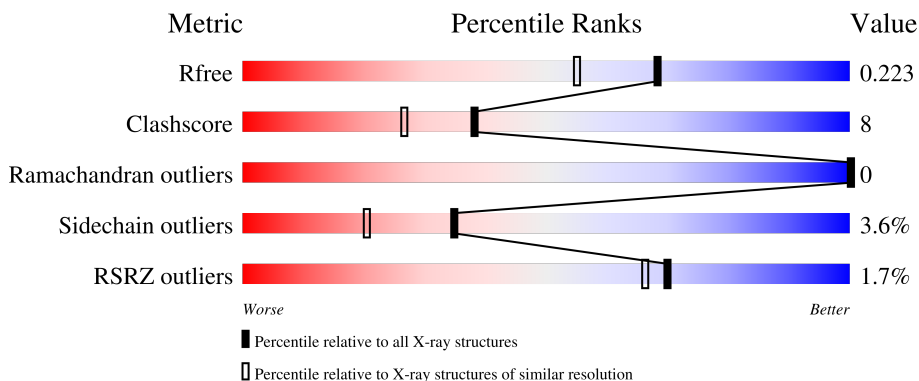
# 1 Overall quality at a glance

The following experimental techniques were used to determine the structure:

*X-RAY DIFFRACTION*


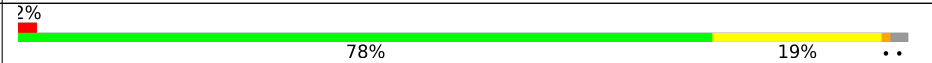
The reported resolution of this entry is 1.80 Å.

Percentile scores (ranging between 0-100) for global validation metrics of the entry are shown in the following graphic. The table shows the number of entries on which the scores are based.



Metric	Whole archive (#Entries)	Similar resolution (#Entries, resolution range(Å))
$R_{free}$	130704	5950 (1.80-1.80)
Clashscore	141614	6793 (1.80-1.80)
Ramachandran outliers	138981	6697 (1.80-1.80)
Sidechain outliers	138945	6696 (1.80-1.80)
RSRZ outliers	127900	5850 (1.80-1.80)

The table below summarises the geometric issues observed across the polymeric chains and their fit to the electron density. The red, orange, yellow and green segments of the lower bar indicate the fraction of residues that contain outliers for  $\geq 3$ , 2, 1 and 0 types of geometric quality criteria respectively. A grey segment represents the fraction of residues that are not modelled. The numeric value for each fraction is indicated below the corresponding segment, with a dot representing fractions  $\leq 5\%$ . The upper red bar (where present) indicates the fraction of residues that have poor fit to the electron density. The numeric value is given above the bar.

Mol	Chain	Length	Quality of chain
1	A	267	 81% 17% ..
1	B	267	 78% 19% ..

## 2 Entry composition [i](#)

There are 4 unique types of molecules in this entry. The entry contains 4738 atoms, of which 0 are hydrogens and 0 are deuteriums.

In the tables below, the ZeroOcc column contains the number of atoms modelled with zero occupancy, the AltConf column contains the number of residues with at least one atom in alternate conformation and the Trace column contains the number of residues modelled with at most 2 atoms.

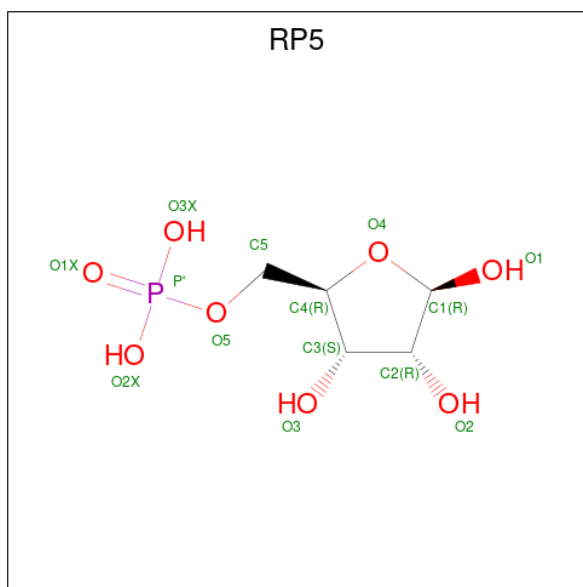
- Molecule 1 is a protein called 2-dehydro-3-deoxyphosphooctonate aldolase.

Mol	Chain	Residues	Atoms					ZeroOcc	AltConf	Trace
			Total	C	N	O	S			
1	A	263	Total 2067	C 1332	N 346	O 384	S 5	0	0	0
1	B	262	Total 2058	C 1327	N 345	O 381	S 5	0	0	0

There are 2 discrepancies between the modelled and reference sequences:

Chain	Residue	Modelled	Actual	Comment	Reference
A	1011	ASN	CYS	engineered mutation	UNP O66496
B	2011	ASN	CYS	engineered mutation	UNP O66496

- Molecule 2 is 5-O-phosphono-beta-D-ribofuranose (three-letter code: RP5) (formula: C<sub>5</sub>H<sub>11</sub>O<sub>8</sub>P).



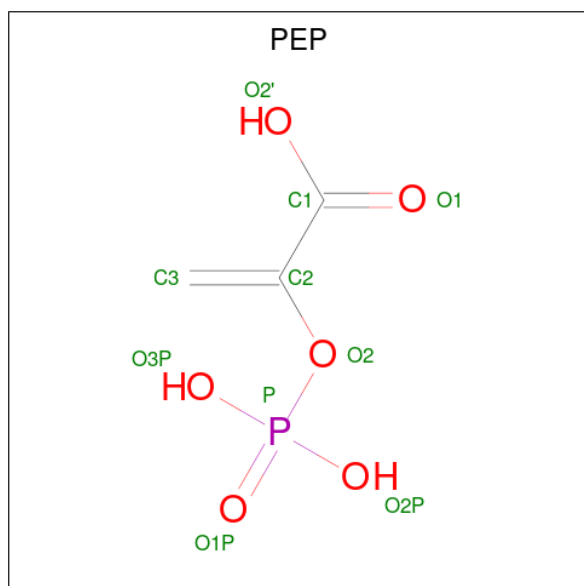
Mol	Chain	Residues	Atoms				ZeroOcc	AltConf
			Total	C	O	P		
2	A	1	Total 14	C 5	O 8	P 1	0	0

*Continued on next page...*

Continued from previous page...

Mol	Chain	Residues	Atoms				ZeroOcc	AltConf
			Total	C	O	P		
2	B	1	14	5	8	1	0	0

- Molecule 3 is PHOSPHOENOLPYRUVATE (three-letter code: PEP) (formula:  $C_3H_5O_6P$ ).



Mol	Chain	Residues	Atoms				ZeroOcc	AltConf
			Total	C	O	P		
3	A	1	10	3	6	1	0	0
3	B	1	10	3	6	1	0	0

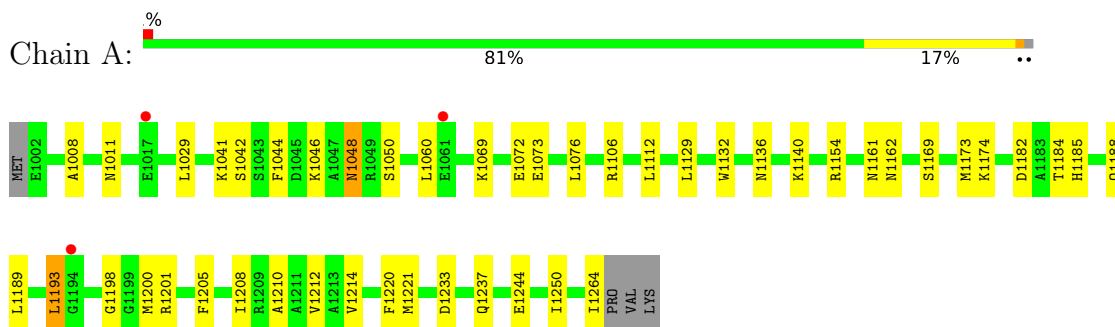
- Molecule 4 is water.

Mol	Chain	Residues	Atoms	ZeroOcc	AltConf
4	A	298	Total O 298 298	0	0
4	B	267	Total O 267 267	0	0

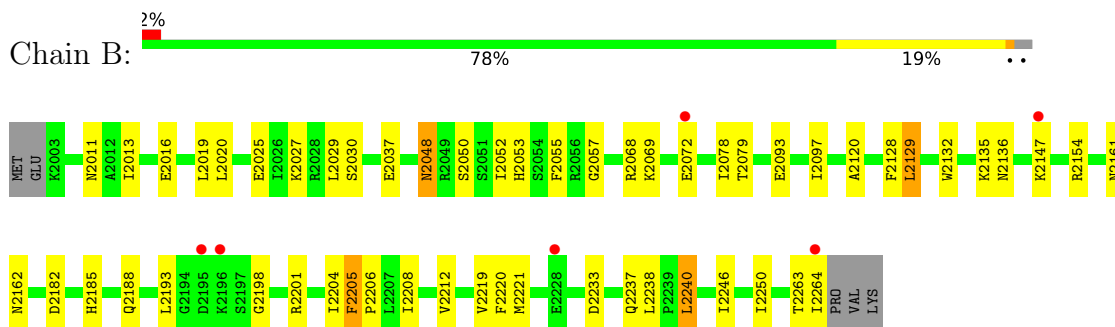
### 3 Residue-property plots [i](#)

These plots are drawn for all protein, RNA, DNA and oligosaccharide chains in the entry. The first graphic for a chain summarises the proportions of the various outlier classes displayed in the second graphic. The second graphic shows the sequence view annotated by issues in geometry and electron density. Residues are color-coded according to the number of geometric quality criteria for which they contain at least one outlier: green = 0, yellow = 1, orange = 2 and red = 3 or more. A red dot above a residue indicates a poor fit to the electron density ( $RSRZ > 2$ ). Stretches of 2 or more consecutive residues without any outlier are shown as a green connector. Residues present in the sample, but not in the model, are shown in grey.

- Molecule 1: 2-dehydro-3-deoxyphosphooctonate aldolase



- Molecule 1: 2-dehydro-3-deoxyphosphooctonate aldolase



## 4 Data and refinement statistics

Property	Value	Source
Space group	P 31 2 1	Depositor
Cell constants a, b, c, $\alpha$ , $\beta$ , $\gamma$	84.77Å 84.77Å 160.58Å 90.00° 90.00° 120.00°	Depositor
Resolution (Å)	36.71 – 1.80 36.70 – 1.74	Depositor EDS
% Data completeness (in resolution range)	88.8 (36.71-1.80) 82.1 (36.70-1.74)	Depositor EDS
$R_{merge}$	0.11	Depositor
$R_{sym}$	0.11	Depositor
$\langle I/\sigma(I) \rangle$ <sup>1</sup>	1.35 (at 1.74Å)	Xtrriage
Refinement program	CNS 1.1	Depositor
R, $R_{free}$	0.200 , 0.230 0.191 , 0.223	Depositor DCC
$R_{free}$ test set	5434 reflections (9.56%)	wwPDB-VP
Wilson B-factor (Å <sup>2</sup> )	25.3	Xtrriage
Anisotropy	0.333	Xtrriage
Bulk solvent $k_{sol}$ (e/Å <sup>3</sup> ), $B_{sol}$ (Å <sup>2</sup> )	0.32 , 42.8	EDS
L-test for twinning <sup>2</sup>	$\langle  L  \rangle = 0.51$ , $\langle L^2 \rangle = 0.34$	Xtrriage
Estimated twinning fraction	0.012 for -h,-k,l	Xtrriage
$F_o, F_c$ correlation	0.96	EDS
Total number of atoms	4738	wwPDB-VP
Average B, all atoms (Å <sup>2</sup> )	29.0	wwPDB-VP

Xtrriage's analysis on translational NCS is as follows: *The largest off-origin peak in the Patterson function is 5.73% of the height of the origin peak. No significant pseudotranslation is detected.*

<sup>1</sup>Intensities estimated from amplitudes.

<sup>2</sup>Theoretical values of  $\langle |L| \rangle$ ,  $\langle L^2 \rangle$  for acentric reflections are 0.5, 0.333 respectively for untwinned datasets, and 0.375, 0.2 for perfectly twinned datasets.

## 5 Model quality [i](#)

### 5.1 Standard geometry [i](#)

Bond lengths and bond angles in the following residue types are not validated in this section: RP5, PEP

The Z score for a bond length (or angle) is the number of standard deviations the observed value is removed from the expected value. A bond length (or angle) with  $|Z| > 5$  is considered an outlier worth inspection. RMSZ is the root-mean-square of all Z scores of the bond lengths (or angles).

Mol	Chain	Bond lengths		Bond angles	
		RMSZ	# $ Z  > 5$	RMSZ	# $ Z  > 5$
1	A	0.37	1/2108 (0.0%)	0.58	0/2843
1	B	0.33	0/2099	0.57	0/2831
All	All	0.35	1/4207 (0.0%)	0.57	0/5674

All (1) bond length outliers are listed below:

Mol	Chain	Res	Type	Atoms	Z	Observed(Å)	Ideal(Å)
1	A	1072	GLU	CD-OE2	7.11	1.33	1.25

There are no bond angle outliers.

There are no chirality outliers.

There are no planarity outliers.

### 5.2 Too-close contacts [i](#)

In the following table, the Non-H and H(model) columns list the number of non-hydrogen atoms and hydrogen atoms in the chain respectively. The H(added) column lists the number of hydrogen atoms added and optimized by MolProbity. The Clashes column lists the number of clashes within the asymmetric unit, whereas Symm-Clashes lists symmetry-related clashes.

Mol	Chain	Non-H	H(model)	H(added)	Clashes	Symm-Clashes
1	A	2067	0	2102	33	0
1	B	2058	0	2096	38	0
2	A	14	0	0	0	0
2	B	14	0	0	0	0
3	A	10	0	2	0	0
3	B	10	0	2	0	0
4	A	298	0	0	4	0
4	B	267	0	0	3	0

*Continued on next page...*

*Continued from previous page...*

Mol	Chain	Non-H	H(model)	H(added)	Clashes	Symm-Clashes
All	All	4738	0	4202	64	0

The all-atom clashscore is defined as the number of clashes found per 1000 atoms (including hydrogen atoms). The all-atom clashscore for this structure is 8.

All (64) close contacts within the same asymmetric unit are listed below, sorted by their clash magnitude.

Atom-1	Atom-2	Interatomic distance (Å)	Clash overlap (Å)
1:B:2208:ILE:HD11	1:B:2219:VAL:HG11	1.48	0.94
1:A:1161:ASN:HD21	1:B:2132:TRP:HE1	1.09	0.91
1:A:1132:TRP:HE1	1:B:2161:ASN:HD21	1.19	0.91
1:B:2025:GLU:HG2	1:B:2240:LEU:HD22	1.66	0.77
1:A:1174:LYS:HG3	1:A:1264:ILE:HG12	1.68	0.73
1:A:1185:HIS:O	1:A:1188:GLN:HG2	1.88	0.73
1:B:2011:ASN:H	1:B:2237:GLN:NE2	1.85	0.73
1:B:2238:LEU:HD21	1:B:2246:ILE:HD12	1.76	0.68
1:B:2205:PHE:O	1:B:2208:ILE:HG22	1.95	0.66
1:A:1205:PHE:O	1:A:1208:ILE:HG22	1.96	0.66
1:B:2037:GLU:HG3	4:B:3412:HOH:O	1.96	0.65
1:A:1011:ASN:HD21	1:A:1046:LYS:HE2	1.62	0.64
1:B:2185:HIS:O	1:B:2188:GLN:HG2	1.99	0.62
1:B:2048:ASN:H	1:B:2048:ASN:HD22	1.48	0.62
1:B:2011:ASN:H	1:B:2237:GLN:HE22	1.48	0.60
1:A:1048:ASN:H	1:A:1048:ASN:HD22	1.49	0.59
1:B:2193:LEU:HD23	1:B:2198:GLY:CA	2.34	0.57
1:B:2135:LYS:HE3	4:B:3501:HOH:O	2.05	0.56
1:B:2205:PHE:HB3	1:B:2206:PRO:HD3	1.88	0.55
1:A:1041:LYS:HD3	1:A:1042:SER:N	2.23	0.54
1:A:1212:VAL:HG11	1:A:1250:ILE:HB	1.90	0.54
1:B:2263:THR:O	1:B:2264:ILE:HG22	2.09	0.52
1:A:1044:PHE:CZ	1:A:1060:LEU:HD23	2.46	0.51
1:A:1193:LEU:HD22	1:A:1198:GLY:HA2	1.93	0.50
1:A:1136:ASN:HB3	1:B:2050:SER:O	2.12	0.50
1:B:2016:GLU:O	1:B:2020:LEU:HG	2.12	0.50
1:A:1041:LYS:HD3	1:A:1041:LYS:C	2.33	0.49
1:B:2068:ARG:O	1:B:2072:GLU:HG3	2.13	0.49
1:B:2147:LYS:HB3	1:B:2147:LYS:NZ	2.28	0.49
1:A:1188:GLN:NE2	4:A:3003:HOH:O	2.46	0.48
1:A:1201:ARG:HG2	4:A:3358:HOH:O	2.13	0.48
1:A:1069:LYS:HE3	1:A:1073:GLU:OE1	2.13	0.48
1:A:1011:ASN:HD21	1:A:1046:LYS:CE	2.26	0.47

*Continued on next page...*



Continued from previous page...

Atom-1	Atom-2	Interatomic distance (Å)	Clash overlap (Å)
1:B:2013:ILE:HG23	1:B:2019:LEU:HD11	1.96	0.47
1:A:1182:ASP:HA	1:A:1220:PHE:HB3	1.95	0.47
1:A:1233:ASP:O	1:A:1237:GLN:HG3	2.15	0.47
1:A:1184:THR:HB	4:A:3145:HOH:O	2.16	0.46
1:A:1161:ASN:ND2	1:B:2132:TRP:HE1	1.93	0.45
1:A:1048:ASN:HD22	1:A:1048:ASN:N	2.10	0.45
1:B:2020:LEU:HD21	1:B:2069:LYS:HG3	1.99	0.45
1:A:1169:SER:O	1:A:1173:MET:HG3	2.17	0.45
1:A:1050:SER:O	1:B:2136:ASN:HB3	2.17	0.44
1:B:2212:VAL:HG11	1:B:2250:ILE:HB	2.00	0.44
1:A:1008:ALA:HA	1:A:1221:MET:O	2.18	0.44
1:B:2048:ASN:HD22	1:B:2048:ASN:N	2.10	0.43
1:A:1193:LEU:HD22	1:A:1198:GLY:CA	2.48	0.43
4:A:3173:HOH:O	1:B:2053:HIS:HE1	2.01	0.43
1:B:2027:LYS:O	1:B:2030:SER:HB3	2.18	0.43
1:B:2182:ASP:HA	1:B:2220:PHE:HB3	2.00	0.43
1:B:2093:GLU:HG3	4:B:3282:HOH:O	2.18	0.42
1:A:1189:LEU:HD21	1:A:1200:MET:HE1	2.01	0.42
1:B:2078:ILE:HG22	1:B:2079:THR:N	2.35	0.42
1:A:1210:ALA:O	1:A:1214:VAL:HG23	2.19	0.41
1:B:2263:THR:O	1:B:2264:ILE:CG2	2.69	0.41
1:A:1189:LEU:HD21	1:A:1200:MET:CE	2.51	0.41
1:B:2097:ILE:HG12	1:B:2120:ALA:HB3	2.02	0.41
1:A:1140:LYS:HG2	1:B:2052:ILE:HB	2.01	0.41
1:B:2055:PHE:CZ	1:B:2057:GLY:HA2	2.55	0.41
1:A:1132:TRP:HE1	1:B:2161:ASN:ND2	2.00	0.41
1:B:2128:PHE:CE1	1:B:2129:LEU:HD13	2.56	0.41
1:A:1029:LEU:HD21	1:A:1244:GLU:HB2	2.03	0.41
1:A:1060:LEU:C	1:A:1060:LEU:HD13	2.41	0.41
1:B:2219:VAL:HG12	1:B:2221:MET:HG3	2.03	0.40
1:B:2201:ARG:HG3	1:B:2204:ILE:HD12	2.02	0.40

There are no symmetry-related clashes.

## 5.3 Torsion angles

### 5.3.1 Protein backbone

In the following table, the Percentiles column shows the percent Ramachandran outliers of the chain as a percentile score with respect to all X-ray entries followed by that with respect to entries of similar resolution.

The Analysed column shows the number of residues for which the backbone conformation was analysed, and the total number of residues.

Mol	Chain	Analysed	Favoured	Allowed	Outliers	Percentiles	
1	A	261/267 (98%)	257 (98%)	4 (2%)	0	100	100
1	B	260/267 (97%)	254 (98%)	6 (2%)	0	100	100
All	All	521/534 (98%)	511 (98%)	10 (2%)	0	100	100

There are no Ramachandran outliers to report.

### 5.3.2 Protein sidechains [i](#)

In the following table, the Percentiles column shows the percent sidechain outliers of the chain as a percentile score with respect to all X-ray entries followed by that with respect to entries of similar resolution.

The Analysed column shows the number of residues for which the sidechain conformation was analysed, and the total number of residues.

Mol	Chain	Analysed	Rotameric	Outliers	Percentiles	
1	A	220/224 (98%)	212 (96%)	8 (4%)	35	20
1	B	219/224 (98%)	211 (96%)	8 (4%)	34	19
All	All	439/448 (98%)	423 (96%)	16 (4%)	35	20

All (16) residues with a non-rotameric sidechain are listed below:

Mol	Chain	Res	Type
1	A	1048	ASN
1	A	1076	LEU
1	A	1106	ARG
1	A	1112	LEU
1	A	1129	LEU
1	A	1154	ARG
1	A	1162	ASN
1	A	1193	LEU
1	B	2029	LEU
1	B	2048	ASN
1	B	2129	LEU
1	B	2154	ARG
1	B	2162	ASN
1	B	2205	PHE
1	B	2233	ASP

*Continued on next page...*

*Continued from previous page...*

Mol	Chain	Res	Type
1	B	2240	LEU

Sometimes sidechains can be flipped to improve hydrogen bonding and reduce clashes. All (16) such sidechains are listed below:

Mol	Chain	Res	Type
1	A	1011	ASN
1	A	1048	ASN
1	A	1058	HIS
1	A	1136	ASN
1	A	1161	ASN
1	A	1162	ASN
1	A	1188	GLN
1	B	2011	ASN
1	B	2048	ASN
1	B	2053	HIS
1	B	2083	HIS
1	B	2099	GLN
1	B	2122	ASN
1	B	2161	ASN
1	B	2162	ASN
1	B	2237	GLN

### 5.3.3 RNA [i](#)

There are no RNA molecules in this entry.

### 5.4 Non-standard residues in protein, DNA, RNA chains [i](#)

There are no non-standard protein/DNA/RNA residues in this entry.

### 5.5 Carbohydrates [i](#)

There are no monosaccharides in this entry.

### 5.6 Ligand geometry [i](#)

4 ligands are modelled in this entry.

In the following table, the Counts columns list the number of bonds (or angles) for which Mogul statistics could be retrieved, the number of bonds (or angles) that are observed in the model and the number of bonds (or angles) that are defined in the Chemical Component Dictionary. The Link column lists molecule types, if any, to which the group is linked. The Z score for a bond length (or angle) is the number of standard deviations the observed value is removed from the expected value. A bond length (or angle) with  $|Z| > 2$  is considered an outlier worth inspection. RMSZ is the root-mean-square of all Z scores of the bond lengths (or angles).

Mol	Type	Chain	Res	Link	Bond lengths			Bond angles		
					Counts	RMSZ	# Z  > 2	Counts	RMSZ	# Z  > 2
2	RP5	A	1269	-	14,14,14	2.17	3 (21%)	20,21,21	2.21	7 (35%)
3	PEP	B	2268	-	9,9,9	2.33	3 (33%)	11,13,13	2.39	5 (45%)
3	PEP	A	1268	-	9,9,9	2.25	2 (22%)	11,13,13	2.09	3 (27%)
2	RP5	B	2269	-	14,14,14	2.31	4 (28%)	20,21,21	1.02	1 (5%)

In the following table, the Chirals column lists the number of chiral outliers, the number of chiral centers analysed, the number of these observed in the model and the number defined in the Chemical Component Dictionary. Similar counts are reported in the Torsion and Rings columns. '-' means no outliers of that kind were identified.

Mol	Type	Chain	Res	Link	Chirals	Torsions	Rings
2	RP5	A	1269	-	-	5/6/22/22	0/1/1/1
3	PEP	B	2268	-	-	3/9/9/9	-
3	PEP	A	1268	-	-	2/9/9/9	-
2	RP5	B	2269	-	-	1/6/22/22	0/1/1/1

All (12) bond length outliers are listed below:

Mol	Chain	Res	Type	Atoms	Z	Observed(Å)	Ideal(Å)
2	A	1269	RP5	C1-C2	6.39	1.60	1.52
2	B	2269	RP5	C1-C2	5.99	1.59	1.52
3	B	2268	PEP	C2-C1	4.98	1.54	1.49
3	A	1268	PEP	C2-C1	4.83	1.54	1.49
3	A	1268	PEP	O2'-C1	-3.73	1.19	1.30
3	B	2268	PEP	O2'-C1	-3.70	1.19	1.30
2	B	2269	RP5	C3-C4	3.49	1.61	1.53
2	B	2269	RP5	O4-C1	3.13	1.47	1.43
2	B	2269	RP5	C5-C4	2.62	1.59	1.51
2	A	1269	RP5	P'-O5	-2.41	1.52	1.60
2	A	1269	RP5	C5-C4	2.29	1.58	1.51
3	B	2268	PEP	O1-C1	2.15	1.28	1.22

All (16) bond angle outliers are listed below:

Mol	Chain	Res	Type	Atoms	Z	Observed(°)	Ideal(°)
3	B	2268	PEP	O1-C1-C2	-5.38	113.68	121.79
3	A	1268	PEP	O2'-C1-C2	5.14	122.67	113.91
2	A	1269	RP5	O5-C5-C4	-4.74	92.68	108.99
2	A	1269	RP5	O5-P'-O1X	4.73	119.74	106.47
3	B	2268	PEP	O2'-C1-C2	3.67	120.16	113.91
2	A	1269	RP5	O4-C4-C3	3.15	111.35	105.11
3	A	1268	PEP	O2'-C1-O1	-3.05	116.64	123.61
3	B	2268	PEP	O3P-P-O1P	2.75	121.44	110.68
2	A	1269	RP5	O4-C4-C5	2.35	117.11	109.37
2	B	2269	RP5	O4-C1-C2	2.28	107.27	104.46
3	A	1268	PEP	O3P-P-O1P	2.28	119.59	110.68
2	A	1269	RP5	O1-C1-O4	-2.21	108.30	111.13
3	B	2268	PEP	O3P-P-O2P	2.19	116.02	107.64
2	A	1269	RP5	C5-C4-C3	-2.18	107.02	115.18
2	A	1269	RP5	O3X-P'-O5	-2.15	101.01	106.73
3	B	2268	PEP	O2P-P-O1P	-2.01	102.82	110.68

There are no chirality outliers.

All (11) torsion outliers are listed below:

Mol	Chain	Res	Type	Atoms
2	A	1269	RP5	C3-C4-C5-O5
2	A	1269	RP5	C5-O5-P'-O2X
2	A	1269	RP5	C5-O5-P'-O3X
3	A	1268	PEP	O1-C1-C2-C3
3	A	1268	PEP	O2'-C1-C2-C3
3	B	2268	PEP	O1-C1-C2-C3
3	B	2268	PEP	O2'-C1-C2-C3
3	B	2268	PEP	O2'-C1-C2-O2
2	A	1269	RP5	O4-C4-C5-O5
2	A	1269	RP5	C5-O5-P'-O1X
2	B	2269	RP5	O4-C4-C5-O5

There are no ring outliers.

No monomer is involved in short contacts.

## 5.7 Other polymers [i](#)

There are no such residues in this entry.

## 5.8 Polymer linkage issues

There are no chain breaks in this entry.

## 6 Fit of model and data [i](#)

### 6.1 Protein, DNA and RNA chains [i](#)

In the following table, the column labelled ‘#RSRZ> 2’ contains the number (and percentage) of RSRZ outliers, followed by percent RSRZ outliers for the chain as percentile scores relative to all X-ray entries and entries of similar resolution. The OWAB column contains the minimum, median, 95<sup>th</sup> percentile and maximum values of the occupancy-weighted average B-factor per residue. The column labelled ‘Q< 0.9’ lists the number of (and percentage) of residues with an average occupancy less than 0.9.

Mol	Chain	Analysed	<RSRZ>	#RSRZ>2	OWAB(Å <sup>2</sup> )	Q<0.9
1	A	263/267 (98%)	-0.31	3 (1%) 80 78	17, 25, 39, 53	0
1	B	262/267 (98%)	-0.05	6 (2%) 60 56	19, 27, 44, 55	0
All	All	525/534 (98%)	-0.18	9 (1%) 70 66	17, 26, 43, 55	0

All (9) RSRZ outliers are listed below:

Mol	Chain	Res	Type	RSRZ
1	B	2264	ILE	4.5
1	B	2147	LYS	3.2
1	B	2072	GLU	3.1
1	B	2228	GLU	3.0
1	A	1061	GLU	2.7
1	B	2196	LYS	2.7
1	A	1194	GLY	2.2
1	A	1017	GLU	2.1
1	B	2195	ASP	2.0

### 6.2 Non-standard residues in protein, DNA, RNA chains [i](#)

There are no non-standard protein/DNA/RNA residues in this entry.

### 6.3 Carbohydrates [i](#)

There are no monosaccharides in this entry.

### 6.4 Ligands [i](#)

In the following table, the Atoms column lists the number of modelled atoms in the group and the number defined in the chemical component dictionary. The B-factors column lists the minimum,

median, 95<sup>th</sup> percentile and maximum values of B factors of atoms in the group. The column labelled 'Q< 0.9' lists the number of atoms with occupancy less than 0.9.

Mol	Type	Chain	Res	Atoms	RSCC	RSR	B-factors( $\text{\AA}^2$ )	Q<0.9
2	RP5	A	1269	14/14	0.96	0.08	22,29,31,32	0
2	RP5	B	2269	14/14	0.96	0.08	27,31,34,37	0
3	PEP	A	1268	10/10	0.98	0.08	17,19,21,23	0
3	PEP	B	2268	10/10	0.98	0.11	18,24,27,27	0

## 6.5 Other polymers [i](#)

There are no such residues in this entry.