



Full wwPDB X-ray Structure Validation Report ⓘ

Oct 2, 2023 – 05:22 PM EDT

PDB ID : 6NWN
Title : Crystal structure of Mycobacterium tuberculosis dethiobiotin synthetase in complex with glutamic acid linked compound 10
Authors : Thompson, A.P.; Polyak, S.W.; Wegener, K.L.; Bruning, J.B.
Deposited on : 2019-02-06
Resolution : 2.00 Å(reported)

This is a Full wwPDB X-ray Structure Validation Report for a publicly released PDB entry.

We welcome your comments at validation@mail.wwpdb.org

A user guide is available at

<https://www.wwpdb.org/validation/2017/XrayValidationReportHelp>

with specific help available everywhere you see the ⓘ symbol.

The types of validation reports are described at

<http://www.wwpdb.org/validation/2017/FAQs#types>.

The following versions of software and data (see [references ⓘ](#)) were used in the production of this report:

MolProbity : **FAILED**
Mogul : 1.8.5 (274361), CSD as541be (2020)
Xtrriage (Phenix) : 1.13
EDS : **FAILED**
buster-report : 1.1.7 (2018)
Percentile statistics : 20191225.v01 (using entries in the PDB archive December 25th 2019)
Ideal geometry (proteins) : Engh & Huber (2001)
Ideal geometry (DNA, RNA) : Parkinson et al. (1996)
Validation Pipeline (wwPDB-VP) : 2.35.1

1 Overall quality at a glance

The following experimental techniques were used to determine the structure:

X-RAY DIFFRACTION

The reported resolution of this entry is 2.00 Å.

There are no overall percentile quality scores available for this entry.

MolProbity and EDS failed to run properly - the sequence quality summary graphics cannot be shown.

2 Entry composition i

There are 4 unique types of molecules in this entry. The entry contains 7010 atoms, of which 0 are hydrogens and 0 are deuteriums.

In the tables below, the ZeroOcc column contains the number of atoms modelled with zero occupancy, the AltConf column contains the number of residues with at least one atom in alternate conformation and the Trace column contains the number of residues modelled with at most 2 atoms.

- Molecule 1 is a protein called ATP-dependent dethiobiotin synthetase BioD.

Mol	Chain	Residues	Atoms					ZeroOcc	AltConf	Trace
			Total	C	N	O	S			
1	A	227	1600	996	293	304	7	0	4	0
1	B	226	1574	982	285	300	7	0	1	0
1	C	228	1594	994	290	303	7	0	2	0
1	D	227	1583	989	284	303	7	0	2	0

There are 32 discrepancies between the modelled and reference sequences:

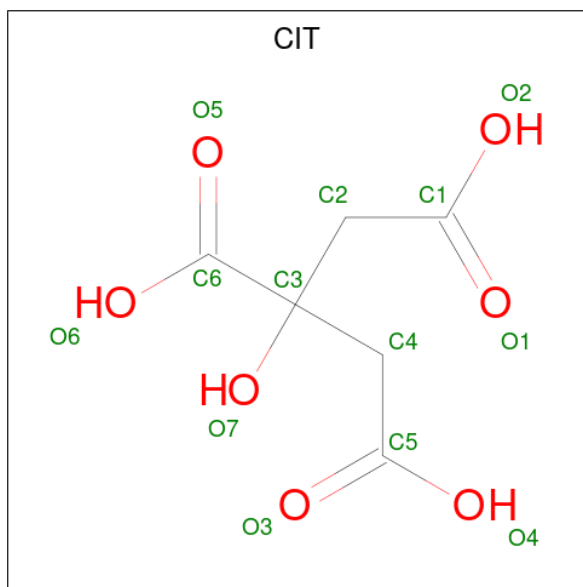
Chain	Residue	Modelled	Actual	Comment	Reference
A	-6	HIS	-	expression tag	UNP P9WPQ5
A	-5	HIS	-	expression tag	UNP P9WPQ5
A	-4	HIS	-	expression tag	UNP P9WPQ5
A	-3	HIS	-	expression tag	UNP P9WPQ5
A	-2	HIS	-	expression tag	UNP P9WPQ5
A	-1	HIS	-	expression tag	UNP P9WPQ5
A	0	GLY	-	expression tag	UNP P9WPQ5
A	1	GLY	-	expression tag	UNP P9WPQ5
B	-6	HIS	-	expression tag	UNP P9WPQ5
B	-5	HIS	-	expression tag	UNP P9WPQ5
B	-4	HIS	-	expression tag	UNP P9WPQ5
B	-3	HIS	-	expression tag	UNP P9WPQ5
B	-2	HIS	-	expression tag	UNP P9WPQ5
B	-1	HIS	-	expression tag	UNP P9WPQ5
B	0	GLY	-	expression tag	UNP P9WPQ5
B	1	GLY	-	expression tag	UNP P9WPQ5
C	-6	HIS	-	expression tag	UNP P9WPQ5
C	-5	HIS	-	expression tag	UNP P9WPQ5
C	-4	HIS	-	expression tag	UNP P9WPQ5
C	-3	HIS	-	expression tag	UNP P9WPQ5
C	-2	HIS	-	expression tag	UNP P9WPQ5

Continued on next page...

Continued from previous page...

Chain	Residue	Modelled	Actual	Comment	Reference
C	-1	HIS	-	expression tag	UNP P9WPQ5
C	0	GLY	-	expression tag	UNP P9WPQ5
C	1	GLY	-	expression tag	UNP P9WPQ5
D	-6	HIS	-	expression tag	UNP P9WPQ5
D	-5	HIS	-	expression tag	UNP P9WPQ5
D	-4	HIS	-	expression tag	UNP P9WPQ5
D	-3	HIS	-	expression tag	UNP P9WPQ5
D	-2	HIS	-	expression tag	UNP P9WPQ5
D	-1	HIS	-	expression tag	UNP P9WPQ5
D	0	GLY	-	expression tag	UNP P9WPQ5
D	1	GLY	-	expression tag	UNP P9WPQ5

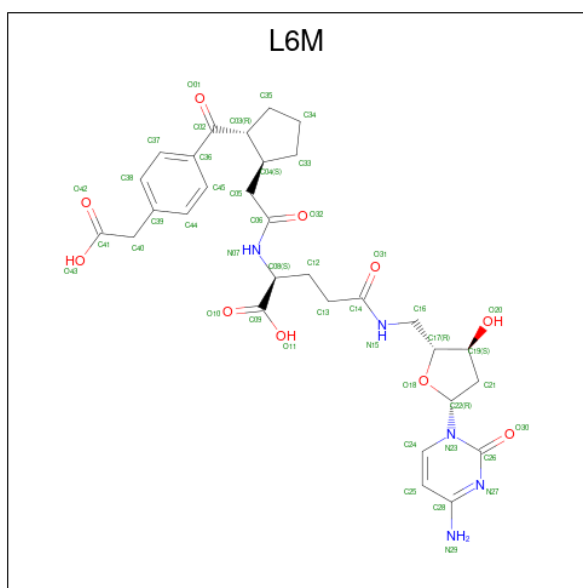
- Molecule 2 is CITRIC ACID (three-letter code: CIT) (formula: C₆H₈O₇) (labeled as "Ligand of Interest" by depositor).



Mol	Chain	Residues	Atoms	ZeroOcc	AltConf
2	A	1	Total C O 13 6 7	0	0
2	B	1	Total C O 13 6 7	0	0
2	C	1	Total C O 13 6 7	0	0
2	D	1	Total C O 13 6 7	0	0

- Molecule 3 is 5'-{[N-({(1S,2R)-2-[4-(carboxymethyl)benzene-1-carbonyl]cyclopentyl}acetyl)-L-gamma-glutamyl]amino}-2',5'-dideoxycytidine (three-letter code: L6M) (formula:

C₃₀H₃₇N₅O₁₀) (labeled as "Ligand of Interest" by depositor).



Mol	Chain	Residues	Atoms			ZeroOcc	AltConf	
			Total	C	N			O
3	A	1	45	30	5	10	0	0
3	D	1	45	30	5	10	0	0

- Molecule 4 is water.

Mol	Chain	Residues	Atoms		ZeroOcc	AltConf
			Total	O		
4	A	148	148	148	0	0
4	B	153	153	153	0	0
4	C	115	115	115	0	0
4	D	101	101	101	0	0

MolProbity and EDS failed to run properly - this section is therefore empty.

3 Data and refinement statistics

EDS failed to run properly - this section is therefore incomplete.

Property	Value	Source
Space group	P 21 21 21	Depositor
Cell constants a, b, c, α , β , γ	54.71Å 104.61Å 153.63Å 90.00° 90.00° 90.00°	Depositor
Resolution (Å)	46.23 – 2.00	Depositor
% Data completeness (in resolution range)	99.8 (46.23-2.00)	Depositor
R_{merge}	0.07	Depositor
R_{sym}	(Not available)	Depositor
$\langle I/\sigma(I) \rangle$ ¹	1.40 (at 2.00Å)	Xtrriage
Refinement program	PHENIX (1.11.1_2575)	Depositor
R, R_{free}	0.184 , 0.226	Depositor
Wilson B-factor (Å ²)	36.4	Xtrriage
Anisotropy	0.058	Xtrriage
L-test for twinning ²	$\langle L \rangle = 0.50$, $\langle L^2 \rangle = 0.33$	Xtrriage
Estimated twinning fraction	No twinning to report.	Xtrriage
Total number of atoms	7010	wwPDB-VP
Average B, all atoms (Å ²)	39.0	wwPDB-VP

Xtrriage's analysis on translational NCS is as follows: *The largest off-origin peak in the Patterson function is 3.53% of the height of the origin peak. No significant pseudotranslation is detected.*

¹Intensities estimated from amplitudes.

²Theoretical values of $\langle |L| \rangle$, $\langle L^2 \rangle$ for acentric reflections are 0.5, 0.333 respectively for untwinned datasets, and 0.375, 0.2 for perfectly twinned datasets.

4 Model quality [i](#)

4.1 Standard geometry [i](#)

MolProbity failed to run properly - this section is therefore empty.

4.2 Too-close contacts [i](#)

MolProbity failed to run properly - this section is therefore empty.

4.3 Torsion angles [i](#)

4.3.1 Protein backbone [i](#)

MolProbity failed to run properly - this section is therefore empty.

4.3.2 Protein sidechains [i](#)

MolProbity failed to run properly - this section is therefore empty.

4.3.3 RNA [i](#)

MolProbity failed to run properly - this section is therefore empty.

4.4 Non-standard residues in protein, DNA, RNA chains [i](#)

There are no non-standard protein/DNA/RNA residues in this entry.

4.5 Carbohydrates [i](#)

There are no monosaccharides in this entry.

4.6 Ligand geometry [i](#)

6 ligands are modelled in this entry.

In the following table, the Counts columns list the number of bonds (or angles) for which Mogul statistics could be retrieved, the number of bonds (or angles) that are observed in the model and the number of bonds (or angles) that are defined in the Chemical Component Dictionary. The Link column lists molecule types, if any, to which the group is linked. The Z score for a bond

length (or angle) is the number of standard deviations the observed value is removed from the expected value. A bond length (or angle) with $|Z| > 2$ is considered an outlier worth inspection. RMSZ is the root-mean-square of all Z scores of the bond lengths (or angles).

Mol	Type	Chain	Res	Link	Bond lengths			Bond angles		
					Counts	RMSZ	# Z > 2	Counts	RMSZ	# Z > 2
3	L6M	A	402	-	48,48,48	3.87	24 (50%)	63,67,67	1.34	8 (12%)
2	CIT	A	401	-	12,12,12	1.09	0	17,17,17	1.57	3 (17%)
3	L6M	D	402	-	48,48,48	3.94	25 (52%)	63,67,67	1.30	9 (14%)
2	CIT	B	301	-	12,12,12	1.11	0	17,17,17	1.59	3 (17%)
2	CIT	D	401	-	12,12,12	1.12	0	17,17,17	1.49	2 (11%)
2	CIT	C	301	-	12,12,12	0.99	0	17,17,17	1.90	3 (17%)

In the following table, the Chirals column lists the number of chiral outliers, the number of chiral centers analysed, the number of these observed in the model and the number defined in the Chemical Component Dictionary. Similar counts are reported in the Torsion and Rings columns. '-' means no outliers of that kind were identified.

Mol	Type	Chain	Res	Link	Chirals	Torsions	Rings
3	L6M	A	402	-	-	3/38/60/60	0/4/4/4
2	CIT	A	401	-	-	1/16/16/16	-
3	L6M	D	402	-	-	7/38/60/60	0/4/4/4
2	CIT	B	301	-	-	0/16/16/16	-
2	CIT	D	401	-	-	0/16/16/16	-
2	CIT	C	301	-	-	6/16/16/16	-

All (49) bond length outliers are listed below:

Mol	Chain	Res	Type	Atoms	Z	Observed(Å)	Ideal(Å)
3	D	402	L6M	C35-C03	-11.00	1.33	1.54
3	A	402	L6M	C35-C03	-10.95	1.33	1.54
3	D	402	L6M	C33-C04	-8.92	1.30	1.53
3	A	402	L6M	C33-C04	-8.57	1.31	1.53
3	D	402	L6M	C21-C19	-7.82	1.32	1.52
3	D	402	L6M	C06-N07	7.72	1.50	1.34
3	A	402	L6M	C21-C19	-7.71	1.32	1.52
3	A	402	L6M	C06-N07	7.62	1.50	1.34
3	D	402	L6M	C03-C04	6.88	1.71	1.54
3	A	402	L6M	C26-N27	6.59	1.49	1.36
3	D	402	L6M	C26-N27	6.49	1.49	1.36
3	A	402	L6M	C03-C04	6.37	1.70	1.54
3	D	402	L6M	C14-N15	6.30	1.47	1.33

Continued on next page...

Continued from previous page...

Mol	Chain	Res	Type	Atoms	Z	Observed(Å)	Ideal(Å)
3	A	402	L6M	C14-N15	6.09	1.47	1.33
3	A	402	L6M	C24-C25	6.08	1.49	1.35
3	D	402	L6M	C24-C25	6.02	1.49	1.35
3	A	402	L6M	C28-N27	5.26	1.45	1.34
3	D	402	L6M	C28-N27	5.08	1.44	1.34
3	D	402	L6M	C36-C02	4.89	1.56	1.49
3	D	402	L6M	O18-C22	-4.78	1.31	1.42
3	A	402	L6M	O18-C22	-4.68	1.31	1.42
3	A	402	L6M	O18-C17	4.62	1.55	1.45
3	D	402	L6M	O18-C17	4.39	1.54	1.45
3	A	402	L6M	C28-N29	4.19	1.43	1.33
3	D	402	L6M	C28-N29	4.14	1.43	1.33
3	D	402	L6M	C16-C17	-4.04	1.42	1.52
3	A	402	L6M	C16-C17	-4.00	1.42	1.52
3	A	402	L6M	C36-C02	3.80	1.54	1.49
3	A	402	L6M	C24-N23	3.79	1.47	1.38
3	D	402	L6M	C24-N23	3.76	1.47	1.38
3	A	402	L6M	C26-N23	3.74	1.48	1.40
3	D	402	L6M	C40-C39	3.74	1.57	1.51
3	D	402	L6M	C26-N23	3.67	1.47	1.40
3	D	402	L6M	C21-C22	3.60	1.62	1.52
3	A	402	L6M	C13-C14	3.54	1.58	1.51
3	A	402	L6M	C21-C22	3.52	1.62	1.52
3	A	402	L6M	O30-C26	-3.32	1.17	1.23
3	A	402	L6M	C40-C39	3.23	1.56	1.51
3	D	402	L6M	C13-C14	3.19	1.57	1.51
3	D	402	L6M	O30-C26	-3.05	1.18	1.23
3	A	402	L6M	O20-C19	3.00	1.49	1.43
3	D	402	L6M	O20-C19	2.88	1.49	1.43
3	A	402	L6M	C25-C28	2.82	1.49	1.42
3	D	402	L6M	C25-C28	2.79	1.49	1.42
3	A	402	L6M	C34-C33	2.59	1.62	1.51
3	D	402	L6M	C34-C33	2.39	1.61	1.51
3	D	402	L6M	O01-C02	-2.12	1.19	1.22
3	A	402	L6M	C12-C13	2.09	1.59	1.52
3	D	402	L6M	C12-C13	2.02	1.59	1.52

All (28) bond angle outliers are listed below:

Mol	Chain	Res	Type	Atoms	Z	Observed(°)	Ideal(°)
2	C	301	CIT	O6-C6-C3	5.34	122.32	113.05
2	D	401	CIT	O6-C6-C3	3.98	119.96	113.05

Continued on next page...

Continued from previous page...

Mol	Chain	Res	Type	Atoms	Z	Observed(°)	Ideal(°)
2	A	401	CIT	O6-C6-C3	3.80	119.65	113.05
2	B	301	CIT	O6-C6-C3	3.67	119.42	113.05
3	D	402	L6M	C13-C12-C08	-3.43	106.75	113.16
3	A	402	L6M	C05-C06-N07	3.23	120.56	116.33
3	D	402	L6M	C33-C04-C05	-3.14	107.57	113.41
3	D	402	L6M	C04-C05-C06	3.06	117.39	112.88
3	A	402	L6M	C04-C05-C06	3.00	117.29	112.88
3	A	402	L6M	O32-C06-N07	-2.93	118.01	122.95
3	A	402	L6M	C17-C16-N15	-2.89	107.00	112.69
3	A	402	L6M	C08-N07-C06	-2.85	114.31	121.65
3	D	402	L6M	C12-C08-N07	-2.69	105.44	110.88
3	D	402	L6M	C17-C16-N15	-2.66	107.47	112.69
2	B	301	CIT	C4-C3-C2	-2.64	102.26	109.16
3	A	402	L6M	C13-C12-C08	-2.62	108.27	113.16
2	C	301	CIT	C3-C4-C5	-2.56	107.62	113.81
3	D	402	L6M	O31-C14-C13	-2.49	117.46	122.02
3	D	402	L6M	C12-C13-C14	-2.41	107.65	113.04
3	D	402	L6M	C16-C17-C19	-2.24	110.75	115.54
2	D	401	CIT	C4-C3-C2	-2.21	103.39	109.16
2	C	301	CIT	O4-C5-C4	2.19	121.40	114.35
2	B	301	CIT	O6-C6-O5	-2.09	117.16	123.82
3	D	402	L6M	O11-C09-C08	2.06	120.26	113.40
3	A	402	L6M	C16-C17-C19	-2.06	111.12	115.54
2	A	401	CIT	O4-C5-C4	2.05	120.93	114.35
3	A	402	L6M	O42-C41-C40	-2.03	117.25	123.04
2	A	401	CIT	O7-C3-C6	2.00	111.68	108.86

There are no chirality outliers.

All (17) torsion outliers are listed below:

Mol	Chain	Res	Type	Atoms
3	A	402	L6M	C03-C04-C05-C06
3	A	402	L6M	C33-C04-C05-C06
3	D	402	L6M	C08-C12-C13-C14
3	A	402	L6M	C08-C12-C13-C14
3	D	402	L6M	N07-C08-C09-O10
3	D	402	L6M	N07-C08-C09-O11
2	C	301	CIT	O7-C3-C6-O5
2	C	301	CIT	C2-C3-C6-O5
2	C	301	CIT	C2-C3-C6-O6
2	C	301	CIT	C4-C3-C6-O6
3	D	402	L6M	C17-C16-N15-C14

Continued on next page...

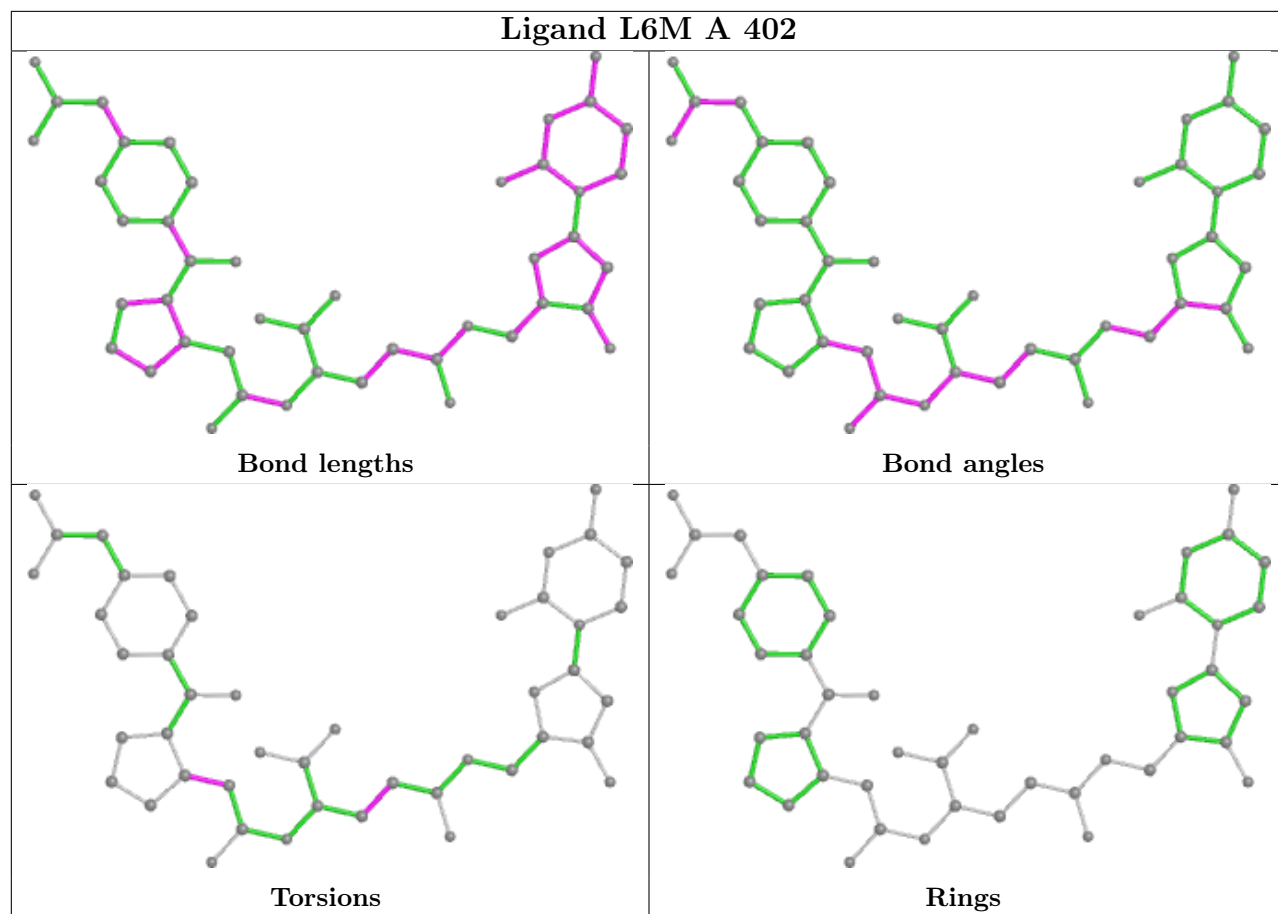
Continued from previous page...

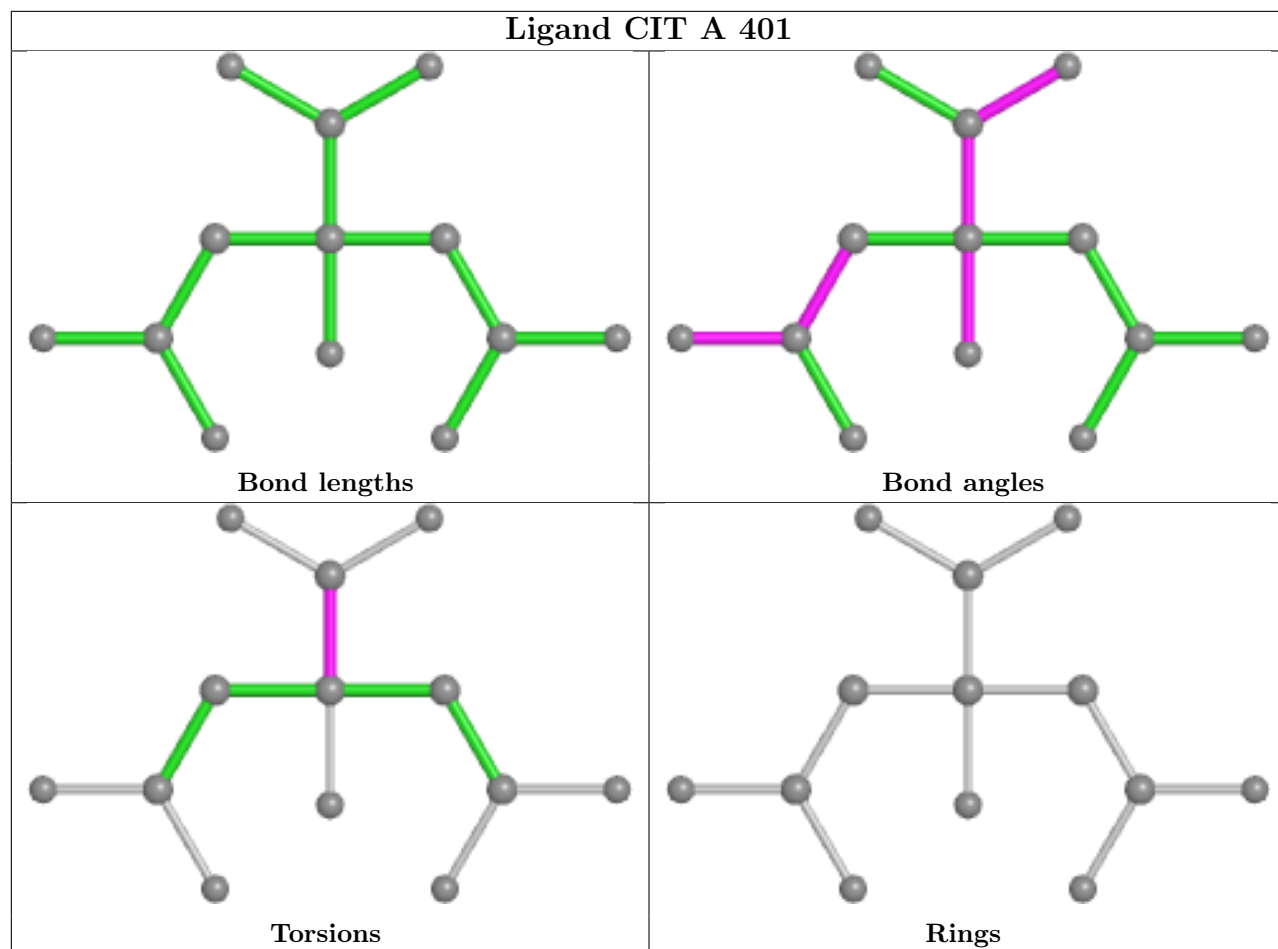
Mol	Chain	Res	Type	Atoms
2	C	301	CIT	C4-C3-C6-O5
3	D	402	L6M	C12-C08-C09-O11
2	C	301	CIT	O7-C3-C6-O6
3	D	402	L6M	C12-C08-C09-O10
2	A	401	CIT	C2-C3-C6-O6
3	D	402	L6M	C03-C04-C05-C06

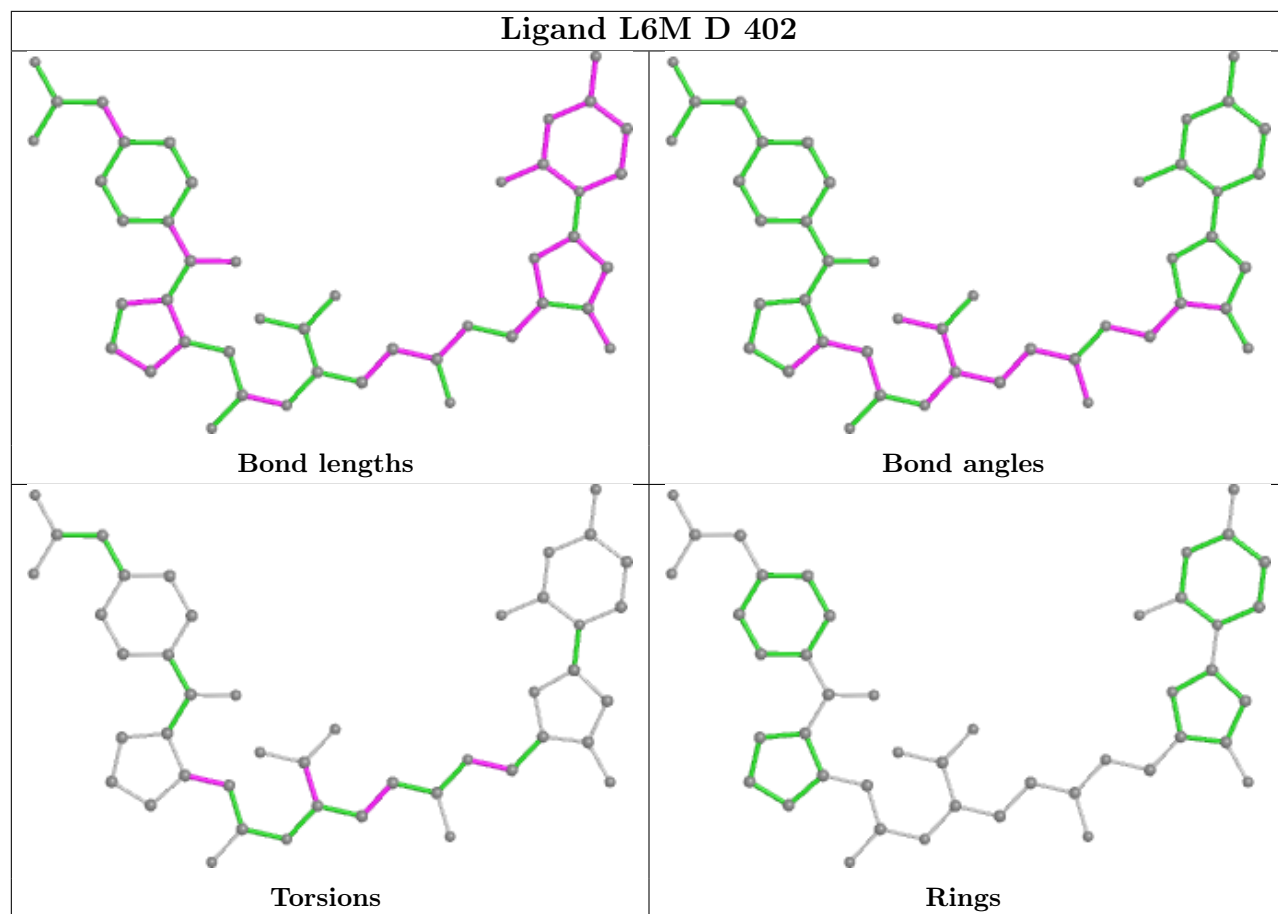
There are no ring outliers.

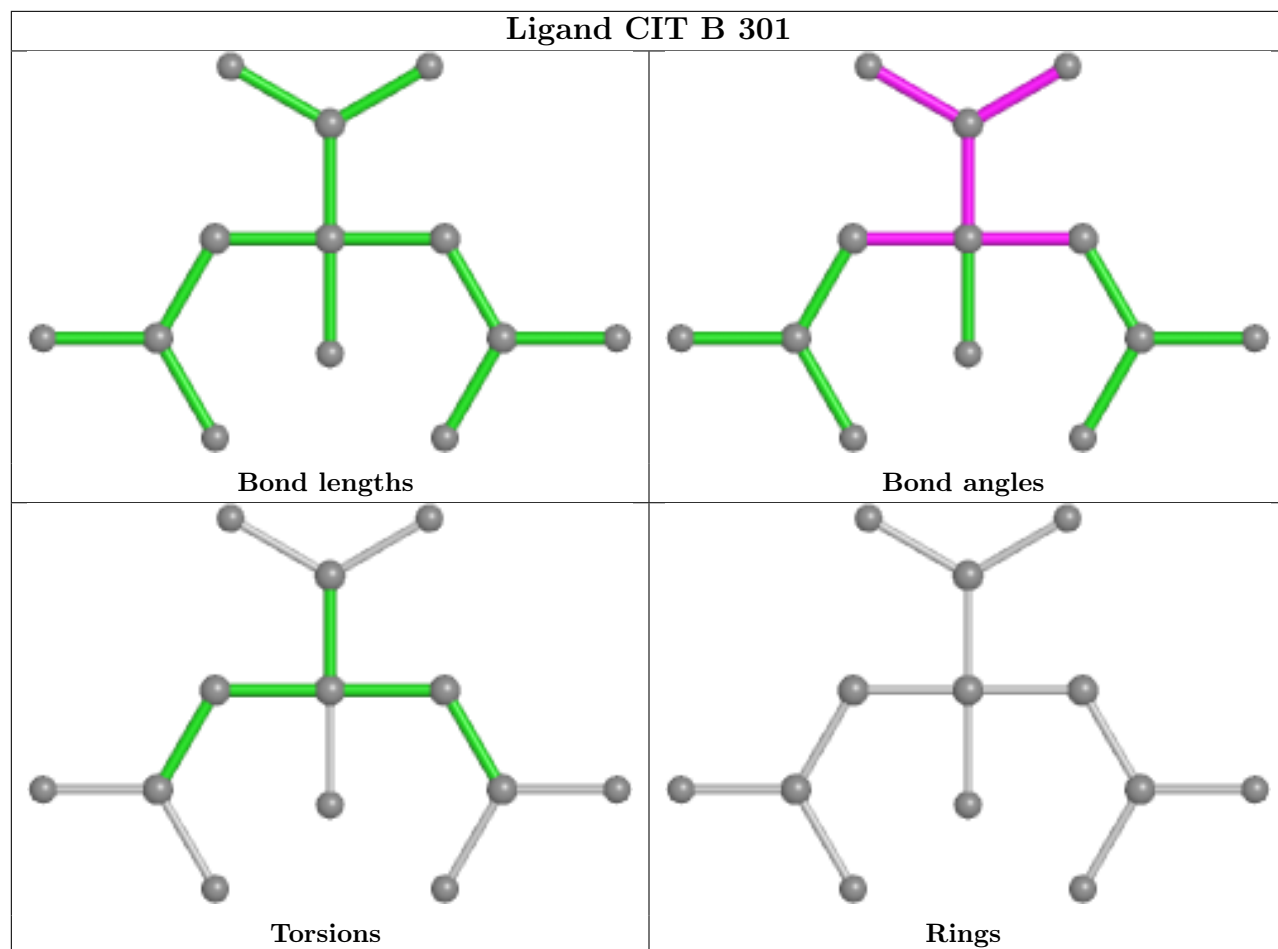
No monomer is involved in short contacts.

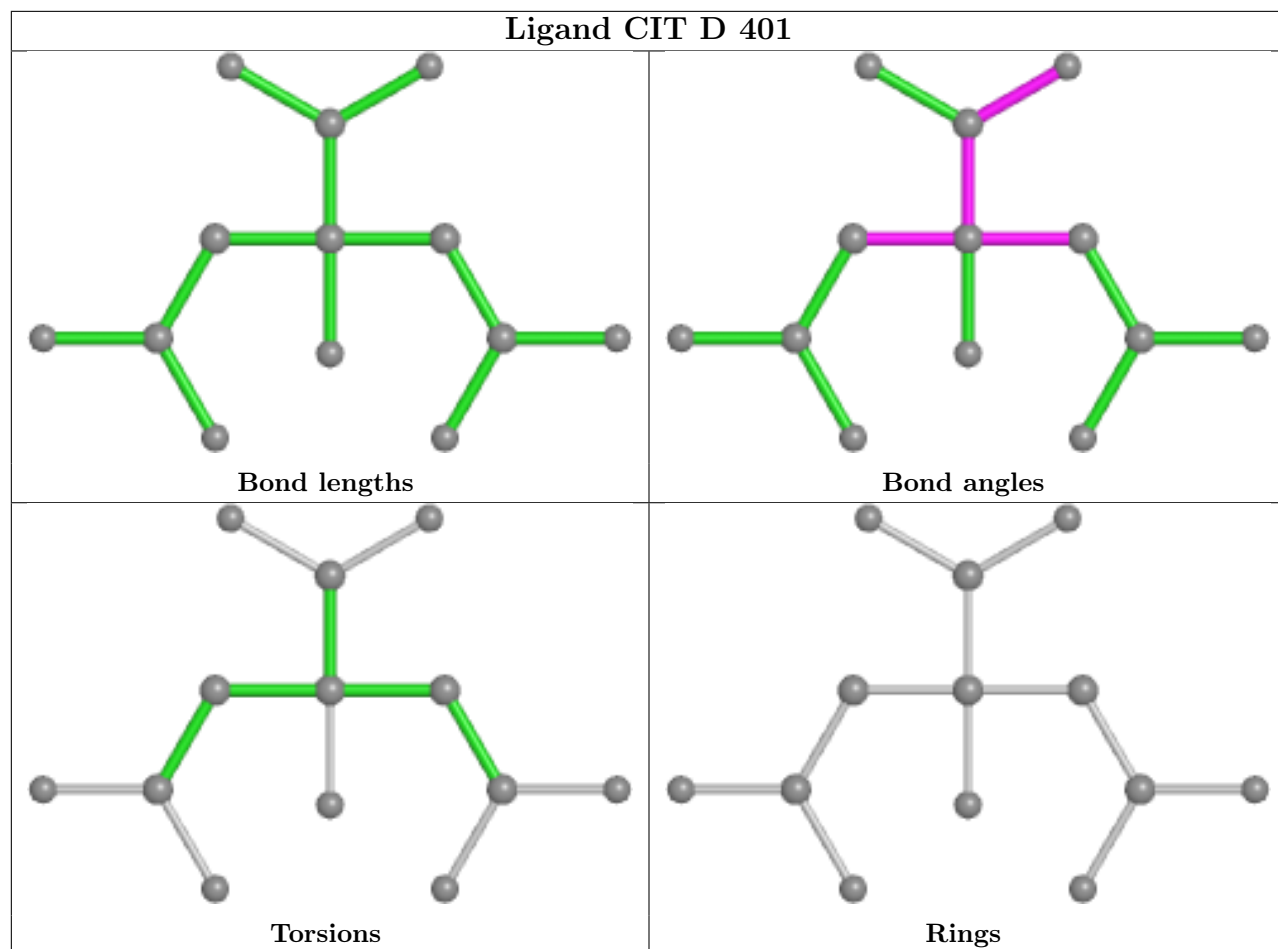
The following is a two-dimensional graphical depiction of Mogul quality analysis of bond lengths, bond angles, torsion angles, and ring geometry for all instances of the Ligand of Interest. In addition, ligands with molecular weight > 250 and outliers as shown on the validation Tables will also be included. For torsion angles, if less than 5% of the Mogul distribution of torsion angles is within 10 degrees of the torsion angle in question, then that torsion angle is considered an outlier. Any bond that is central to one or more torsion angles identified as an outlier by Mogul will be highlighted in the graph. For rings, the root-mean-square deviation (RMSD) between the ring in question and similar rings identified by Mogul is calculated over all ring torsion angles. If the average RMSD is greater than 60 degrees and the minimal RMSD between the ring in question and any Mogul-identified rings is also greater than 60 degrees, then that ring is considered an outlier. The outliers are highlighted in purple. The color gray indicates Mogul did not find sufficient equivalents in the CSD to analyse the geometry.

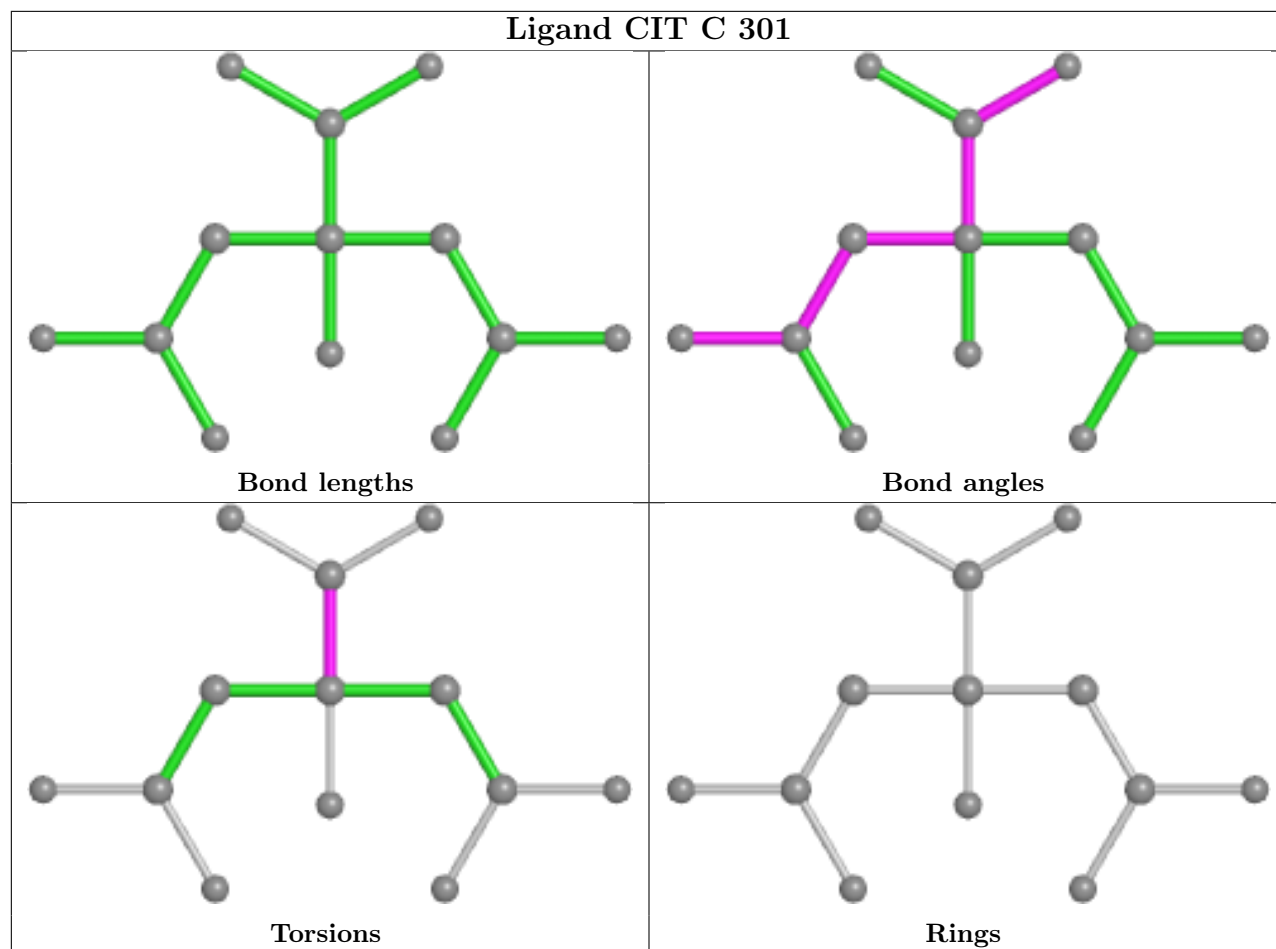












4.7 Other polymers [\(i\)](#)

There are no such residues in this entry.

4.8 Polymer linkage issues [\(i\)](#)

There are no chain breaks in this entry.

5 Fit of model and data [i](#)

5.1 Protein, DNA and RNA chains [i](#)

EDS failed to run properly - this section is therefore empty.

5.2 Non-standard residues in protein, DNA, RNA chains [i](#)

EDS failed to run properly - this section is therefore empty.

5.3 Carbohydrates [i](#)

EDS failed to run properly - this section is therefore empty.

5.4 Ligands [i](#)

EDS failed to run properly - this section is therefore empty.

5.5 Other polymers [i](#)

EDS failed to run properly - this section is therefore empty.