



# wwPDB X-ray Structure Validation Summary Report ⓘ

Oct 2, 2023 – 05:38 PM EDT

PDB ID : 6NMY  
Title : A Cytokine-receptor complex  
Authors : Dhagat, U.; Kan, W.L.; Hercus, T.R.; Broughton, S.E.; Nero, T.L.; Lopez, A.F.; Parker, M.W.  
Deposited on : 2019-01-13  
Resolution : 3.30 Å (reported)

This is a wwPDB X-ray Structure Validation Summary Report for a publicly released PDB entry.

We welcome your comments at [validation@mail.wwpdb.org](mailto:validation@mail.wwpdb.org)

A user guide is available at

<https://www.wwpdb.org/validation/2017/XrayValidationReportHelp>

with specific help available everywhere you see the ⓘ symbol.

The types of validation reports are described at

<http://www.wwpdb.org/validation/2017/FAQs#types>.

---

The following versions of software and data (see [references ⓘ](#)) were used in the production of this report:

MolProbity : **FAILED**  
Mogul : 1.8.5 (274361), CSD as541be (2020)  
Xtriage (Phenix) : 1.13  
EDS : **FAILED**  
Percentile statistics : 20191225.v01 (using entries in the PDB archive December 25th 2019)  
Ideal geometry (proteins) : Engh & Huber (2001)  
Ideal geometry (DNA, RNA) : Parkinson et al. (1996)  
Validation Pipeline (wwPDB-VP) : 2.35.1

## 1 Overall quality at a glance

The following experimental techniques were used to determine the structure:

*X-RAY DIFFRACTION*

The reported resolution of this entry is 3.30 Å.

There are no overall percentile quality scores available for this entry.

MolProbity and EDS failed to run properly - the sequence quality summary graphics cannot be shown.

## 2 Entry composition [i](#)

There are 9 unique types of molecules in this entry. The entry contains 12975 atoms, of which 0 are hydrogens and 0 are deuteriums.

In the tables below, the ZeroOcc column contains the number of atoms modelled with zero occupancy, the AltConf column contains the number of residues with at least one atom in alternate conformation and the Trace column contains the number of residues modelled with at most 2 atoms.

- Molecule 1 is a protein called Interleukin-3 receptor subunit alpha.

Mol	Chain	Residues	Atoms					ZeroOcc	AltConf	Trace
			Total	C	N	O	S			
1	F	270	Total	C	N	O	S	0	0	0
			2189	1381	392	400	16			
1	M	262	Total	C	N	O	S	0	0	0
			2128	1341	383	388	16			

There are 2 discrepancies between the modelled and reference sequences:

Chain	Residue	Modelled	Actual	Comment	Reference
F	212	GLN	ASN	engineered mutation	UNP P26951
M	212	GLN	ASN	engineered mutation	UNP P26951

- Molecule 2 is a protein called Cytokine receptor common subunit beta.

Mol	Chain	Residues	Atoms					ZeroOcc	AltConf	Trace
			Total	C	N	O	S			
2	A	215	Total	C	N	O	S	0	0	0
			1722	1079	304	329	10			
2	C	215	Total	C	N	O	S	0	0	0
			1722	1079	304	329	10			

- Molecule 3 is a protein called Interleukin-3.

Mol	Chain	Residues	Atoms					ZeroOcc	AltConf	Trace
			Total	C	N	O	S			
3	I	108	Total	C	N	O	S	0	0	0
			874	554	155	161	4			
3	J	108	Total	C	N	O	S	0	0	0
			874	554	155	161	4			

There are 10 discrepancies between the modelled and reference sequences:

Chain	Residue	Modelled	Actual	Comment	Reference
I	8	GLY	-	expression tag	UNP P08700
I	9	ALA	-	expression tag	UNP P08700

*Continued on next page...*

*Continued from previous page...*

Chain	Residue	Modelled	Actual	Comment	Reference
I	10	MET	-	expression tag	UNP P08700
I	11	GLY	-	expression tag	UNP P08700
I	13	TYR	TRP	engineered mutation	UNP P08700
J	8	GLY	-	expression tag	UNP P08700
J	9	ALA	-	expression tag	UNP P08700
J	10	MET	-	expression tag	UNP P08700
J	11	GLY	-	expression tag	UNP P08700
J	13	TYR	TRP	engineered mutation	UNP P08700

- Molecule 4 is a protein called Cytokine receptor common subunit beta.

Mol	Chain	Residues	Atoms					ZeroOcc	AltConf	Trace
			Total	C	N	O	S			
4	B	196	1580	987	283	302	8	0	0	0
4	D	197	1589	992	284	305	8	0	0	0

There are 2 discrepancies between the modelled and reference sequences:

Chain	Residue	Modelled	Actual	Comment	Reference
B	346	GLN	ASN	engineered mutation	UNP P32927
D	346	GLN	ASN	engineered mutation	UNP P32927

- Molecule 5 is an oligosaccharide called beta-D-mannopyranose-(1-4)-2-acetamido-2-deoxy-beta-D-glucopyranose-(1-4)-[alpha-L-fucopyranose-(1-6)]2-acetamido-2-deoxy-beta-D-glucopyranose.

Mol	Chain	Residues	Atoms				ZeroOcc	AltConf	Trace
			Total	C	N	O			
5	E	4	49	28	2	19	0	0	0
5	G	4	49	28	2	19	0	0	0

- Molecule 6 is an oligosaccharide called beta-D-mannopyranose-(1-4)-2-acetamido-2-deoxy-beta-D-glucopyranose-(1-4)-2-acetamido-2-deoxy-beta-D-glucopyranose.

Mol	Chain	Residues	Atoms				ZeroOcc	AltConf	Trace
			Total	C	N	O			
6	H	3	39	22	2	15	0	0	0
6	K	3	39	22	2	15	0	0	0

*Continued on next page...*

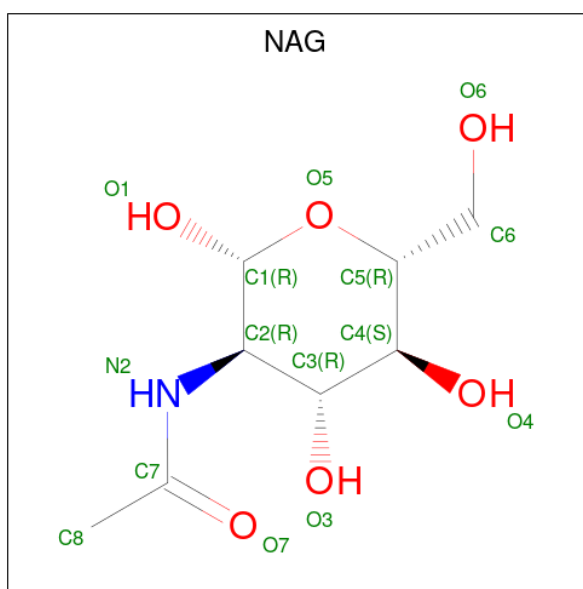
Continued from previous page...

Mol	Chain	Residues	Atoms				ZeroOcc	AltConf	Trace
			Total	C	N	O			
6	N	3	39	22	2	15	0	0	0

- Molecule 7 is an oligosaccharide called 2-acetamido-2-deoxy-beta-D-glucopyranose-(1-4)-2-acetamido-2-deoxy-beta-D-glucopyranose.

Mol	Chain	Residues	Atoms				ZeroOcc	AltConf	Trace
			Total	C	N	O			
7	L	2	28	16	2	10	0	0	0
7	O	2	28	16	2	10	0	0	0

- Molecule 8 is 2-acetamido-2-deoxy-beta-D-glucopyranose (three-letter code: NAG) (formula: C<sub>8</sub>H<sub>15</sub>NO<sub>6</sub>).



Mol	Chain	Residues	Atoms				ZeroOcc	AltConf
			Total	C	N	O		
8	C	1	14	8	1	5	0	0

- Molecule 9 is water.

Mol	Chain	Residues	Atoms	ZeroOcc	AltConf
9	F	2	Total O 2 2	0	0
9	M	2	Total O 2 2	0	0

Continued on next page...

*Continued from previous page...*

<b>Mol</b>	<b>Chain</b>	<b>Residues</b>	<b>Atoms</b>	<b>ZeroOcc</b>	<b>AltConf</b>
9	A	1	Total O 1 1	0	0
9	C	1	Total O 1 1	0	0
9	I	1	Total O 1 1	0	0
9	J	2	Total O 2 2	0	0
9	B	2	Total O 2 2	0	0
9	D	1	Total O 1 1	0	0

MolProbity and EDS failed to run properly - this section is therefore empty.

### 3 Data and refinement statistics

EDS failed to run properly - this section is therefore incomplete.

Property	Value	Source
Space group	P 21 21 21	Depositor
Cell constants a, b, c, $\alpha$ , $\beta$ , $\gamma$	111.65Å 157.25Å 168.31Å 90.00° 90.00° 90.00°	Depositor
Resolution (Å)	47.45 – 3.30	Depositor
% Data completeness (in resolution range)	99.8 (47.45-3.30)	Depositor
$R_{merge}$	0.17	Depositor
$R_{sym}$	(Not available)	Depositor
$\langle I/\sigma(I) \rangle$ <sup>1</sup>	1.51 (at 3.33Å)	Xtriage
Refinement program	PHENIX	Depositor
R, $R_{free}$	0.236 , 0.278	Depositor
Wilson B-factor (Å <sup>2</sup> )	95.0	Xtriage
Anisotropy	0.224	Xtriage
L-test for twinning <sup>2</sup>	$\langle  L  \rangle = 0.46$ , $\langle L^2 \rangle = 0.29$	Xtriage
Estimated twinning fraction	No twinning to report.	Xtriage
Total number of atoms	12975	wwPDB-VP
Average B, all atoms (Å <sup>2</sup> )	95.0	wwPDB-VP

Xtriage's analysis on translational NCS is as follows: *The largest off-origin peak in the Patterson function is 3.02% of the height of the origin peak. No significant pseudotranslation is detected.*

<sup>1</sup> Intensities estimated from amplitudes.

<sup>2</sup> Theoretical values of  $\langle |L| \rangle$ ,  $\langle L^2 \rangle$  for acentric reflections are 0.5, 0.333 respectively for untwinned datasets, and 0.375, 0.2 for perfectly twinned datasets.

## 4 Model quality [i](#)

### 4.1 Standard geometry [i](#)

MolProbity failed to run properly - this section is therefore empty.

### 4.2 Too-close contacts [i](#)

MolProbity failed to run properly - this section is therefore empty.

### 4.3 Torsion angles [i](#)

#### 4.3.1 Protein backbone [i](#)

MolProbity failed to run properly - this section is therefore empty.

#### 4.3.2 Protein sidechains [i](#)

MolProbity failed to run properly - this section is therefore empty.

#### 4.3.3 RNA [i](#)

MolProbity failed to run properly - this section is therefore empty.

### 4.4 Non-standard residues in protein, DNA, RNA chains [i](#)

There are no non-standard protein/DNA/RNA residues in this entry.

### 4.5 Carbohydrates [i](#)

21 monosaccharides are modelled in this entry.

In the following table, the Counts columns list the number of bonds (or angles) for which Mogul statistics could be retrieved, the number of bonds (or angles) that are observed in the model and the number of bonds (or angles) that are defined in the Chemical Component Dictionary. The Link column lists molecule types, if any, to which the group is linked. The Z score for a bond length (or angle) is the number of standard deviations the observed value is removed from the expected value. A bond length (or angle) with  $|Z| > 2$  is considered an outlier worth inspection. RMSZ is the root-mean-square of all Z scores of the bond lengths (or angles).



Mol	Type	Chain	Res	Link	Bond lengths			Bond angles		
					Counts	RMSZ	# Z  > 2	Counts	RMSZ	# Z  > 2
5	NAG	E	1	5,1	14,14,15	0.29	0	17,19,21	0.55	0
5	NAG	E	2	5	14,14,15	0.48	0	17,19,21	0.59	0
5	BMA	E	3	5	11,11,12	1.09	1 (9%)	15,15,17	0.99	1 (6%)
5	FUC	E	4	5	10,10,11	0.79	0	14,14,16	0.85	0
5	NAG	G	1	5,1	14,14,15	1.02	1 (7%)	17,19,21	1.39	3 (17%)
5	NAG	G	2	5	14,14,15	0.31	0	17,19,21	0.38	0
5	BMA	G	3	5	11,11,12	0.70	0	15,15,17	0.72	0
5	FUC	G	4	5	10,10,11	1.78	2 (20%)	14,14,16	1.74	3 (21%)
6	NAG	H	1	1,6	14,14,15	0.73	0	17,19,21	1.12	2 (11%)
6	NAG	H	2	6	14,14,15	0.44	0	17,19,21	1.28	1 (5%)
6	BMA	H	3	6	11,11,12	0.79	0	15,15,17	0.87	0
6	NAG	K	1	1,6	14,14,15	0.36	0	17,19,21	0.83	1 (5%)
6	NAG	K	2	6	14,14,15	0.31	0	17,19,21	0.67	0
6	BMA	K	3	6	11,11,12	0.80	0	15,15,17	0.83	0
7	NAG	L	1	1,7	14,14,15	0.39	0	17,19,21	0.57	0
7	NAG	L	2	7	14,14,15	0.63	0	17,19,21	0.43	0
6	NAG	N	1	2,6	14,14,15	0.63	1 (7%)	17,19,21	0.91	1 (5%)
6	NAG	N	2	6	14,14,15	1.64	2 (14%)	17,19,21	1.12	3 (17%)
6	BMA	N	3	6	11,11,12	0.90	0	15,15,17	1.26	1 (6%)
7	NAG	O	1	2,7	14,14,15	0.35	0	17,19,21	0.70	0
7	NAG	O	2	7	14,14,15	0.24	0	17,19,21	0.49	0

In the following table, the Chirals column lists the number of chiral outliers, the number of chiral centers analysed, the number of these observed in the model and the number defined in the Chemical Component Dictionary. Similar counts are reported in the Torsion and Rings columns. '-' means no outliers of that kind were identified.

Mol	Type	Chain	Res	Link	Chirals	Torsions	Rings
5	NAG	E	1	5,1	-	0/6/23/26	0/1/1/1
5	NAG	E	2	5	-	4/6/23/26	0/1/1/1
5	BMA	E	3	5	-	1/2/19/22	0/1/1/1
5	FUC	E	4	5	-	-	0/1/1/1
5	NAG	G	1	5,1	-	0/6/23/26	0/1/1/1
5	NAG	G	2	5	-	0/6/23/26	0/1/1/1
5	BMA	G	3	5	-	2/2/19/22	0/1/1/1
5	FUC	G	4	5	-	-	0/1/1/1
6	NAG	H	1	1,6	-	4/6/23/26	0/1/1/1
6	NAG	H	2	6	-	2/6/23/26	0/1/1/1
6	BMA	H	3	6	-	0/2/19/22	0/1/1/1
6	NAG	K	1	1,6	-	1/6/23/26	0/1/1/1

Continued on next page...

Continued from previous page...

Mol	Type	Chain	Res	Link	Chirals	Torsions	Rings
6	NAG	K	2	6	-	3/6/23/26	0/1/1/1
6	BMA	K	3	6	-	0/2/19/22	0/1/1/1
7	NAG	L	1	1,7	-	2/6/23/26	0/1/1/1
7	NAG	L	2	7	-	0/6/23/26	0/1/1/1
6	NAG	N	1	2,6	-	1/6/23/26	0/1/1/1
6	NAG	N	2	6	-	2/6/23/26	0/1/1/1
6	BMA	N	3	6	-	2/2/19/22	0/1/1/1
7	NAG	O	1	2,7	-	1/6/23/26	0/1/1/1
7	NAG	O	2	7	-	0/6/23/26	0/1/1/1

The worst 5 of 7 bond length outliers are listed below:

Mol	Chain	Res	Type	Atoms	Z	Observed(Å)	Ideal(Å)
6	N	2	NAG	O5-C1	-5.34	1.35	1.43
5	G	4	FUC	C1-C2	3.90	1.61	1.52
5	G	4	FUC	O5-C1	3.59	1.49	1.43
5	G	1	NAG	O5-C1	-3.53	1.38	1.43
5	E	3	BMA	C1-C2	3.12	1.59	1.52

The worst 5 of 16 bond angle outliers are listed below:

Mol	Chain	Res	Type	Atoms	Z	Observed(°)	Ideal(°)
6	H	2	NAG	C1-O5-C5	4.44	118.21	112.19
5	G	4	FUC	C1-O5-C5	4.17	122.23	112.78
5	G	1	NAG	C1-O5-C5	3.77	117.31	112.19
5	G	4	FUC	C1-C2-C3	3.34	113.77	109.67
6	N	3	BMA	C1-C2-C3	-3.06	105.91	109.67

There are no chirality outliers.

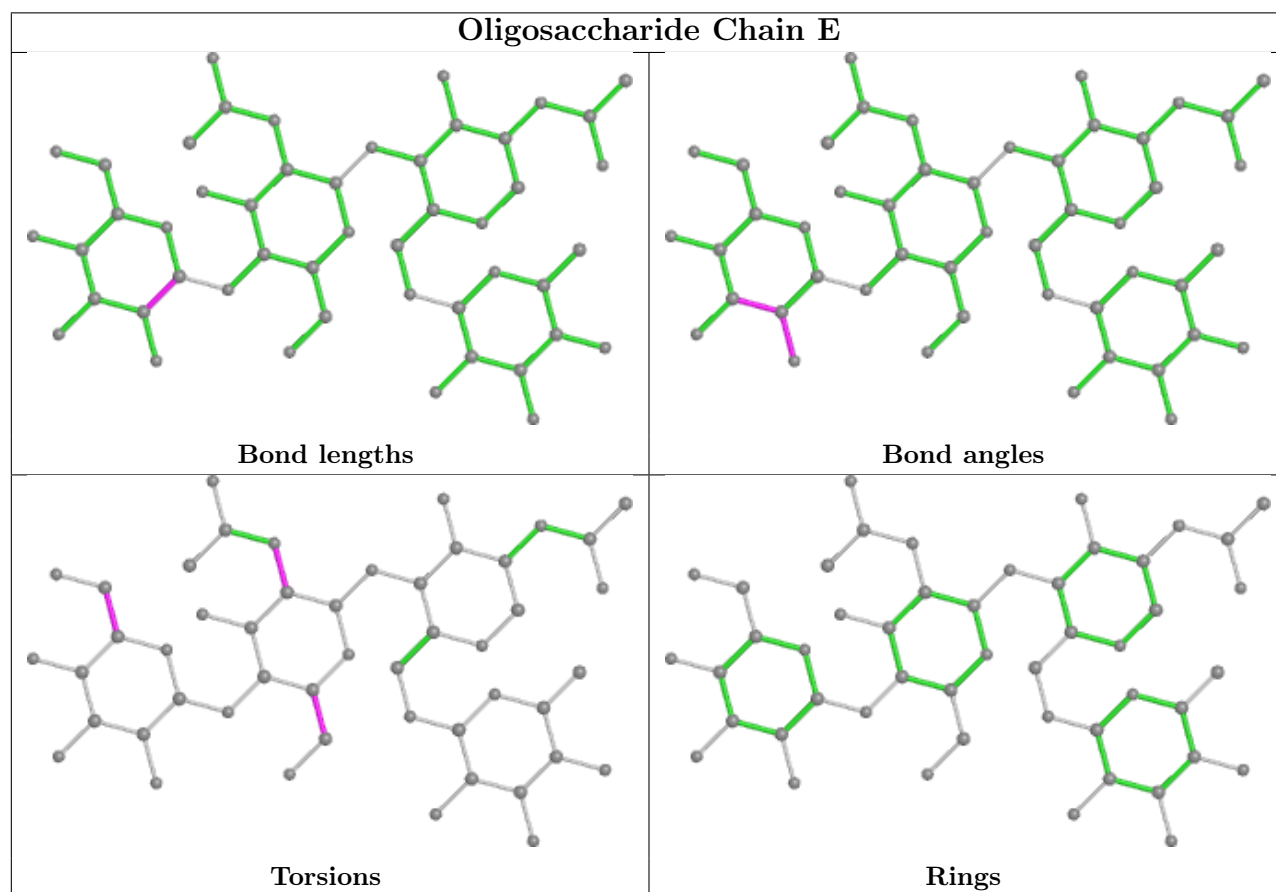
5 of 25 torsion outliers are listed below:

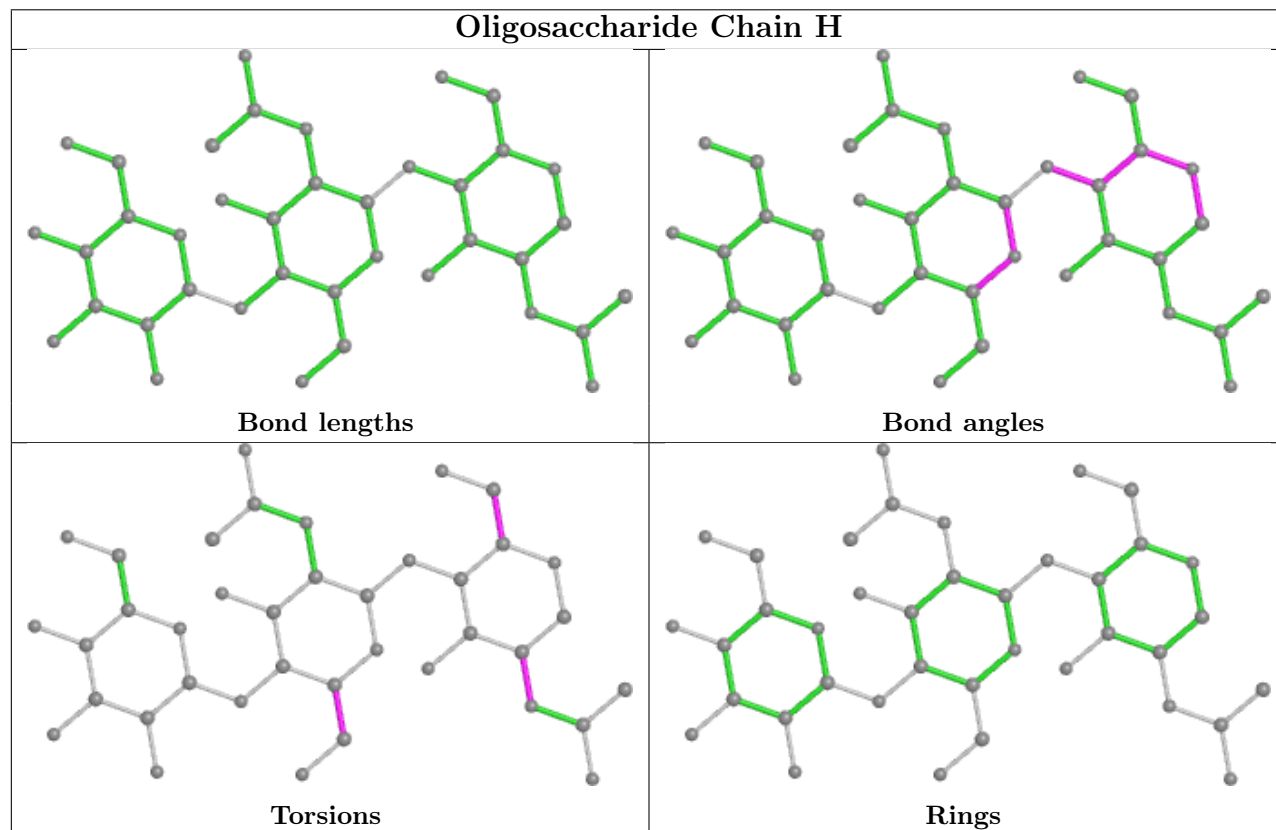
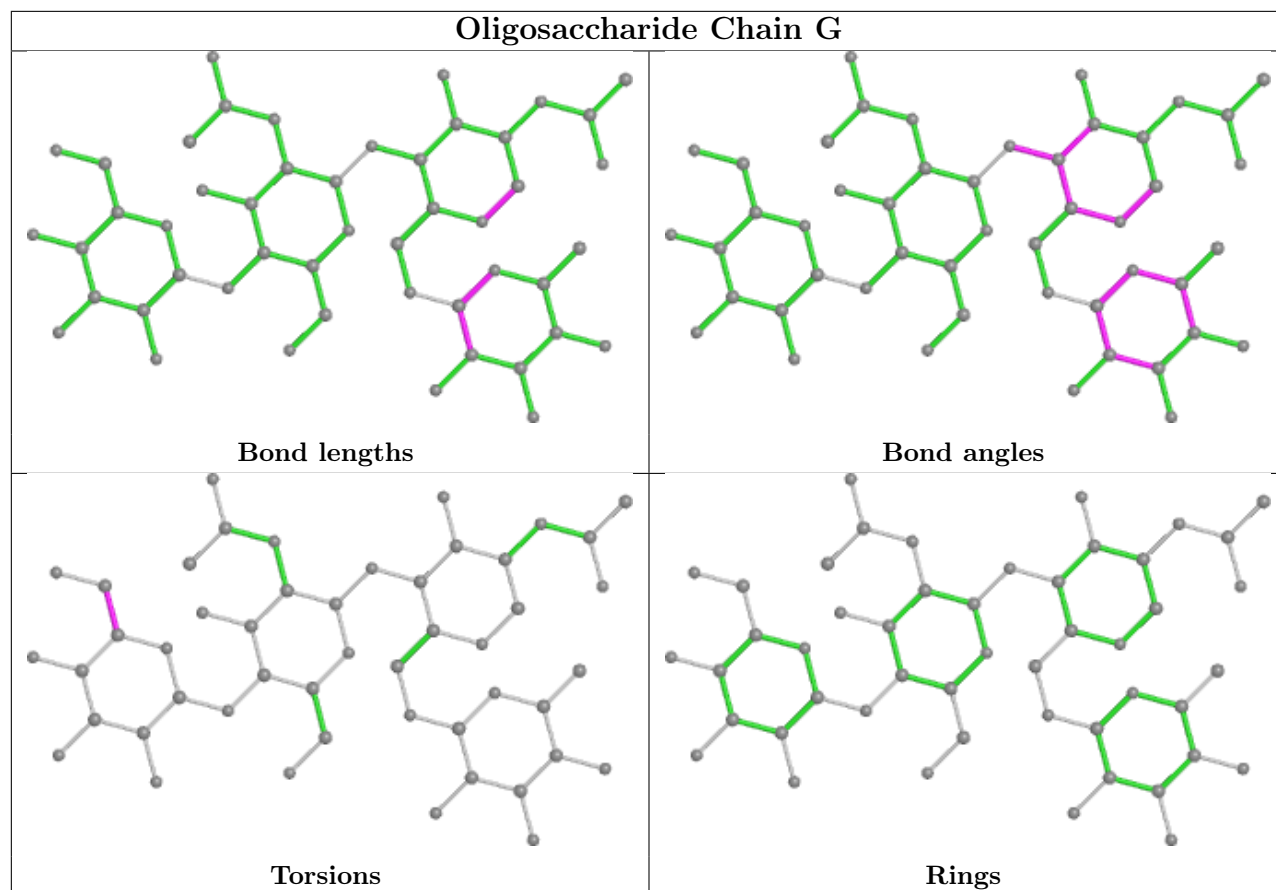
Mol	Chain	Res	Type	Atoms
5	E	2	NAG	O5-C5-C6-O6
7	L	1	NAG	O5-C5-C6-O6
6	N	2	NAG	O5-C5-C6-O6
6	N	2	NAG	C4-C5-C6-O6
6	H	1	NAG	O5-C5-C6-O6

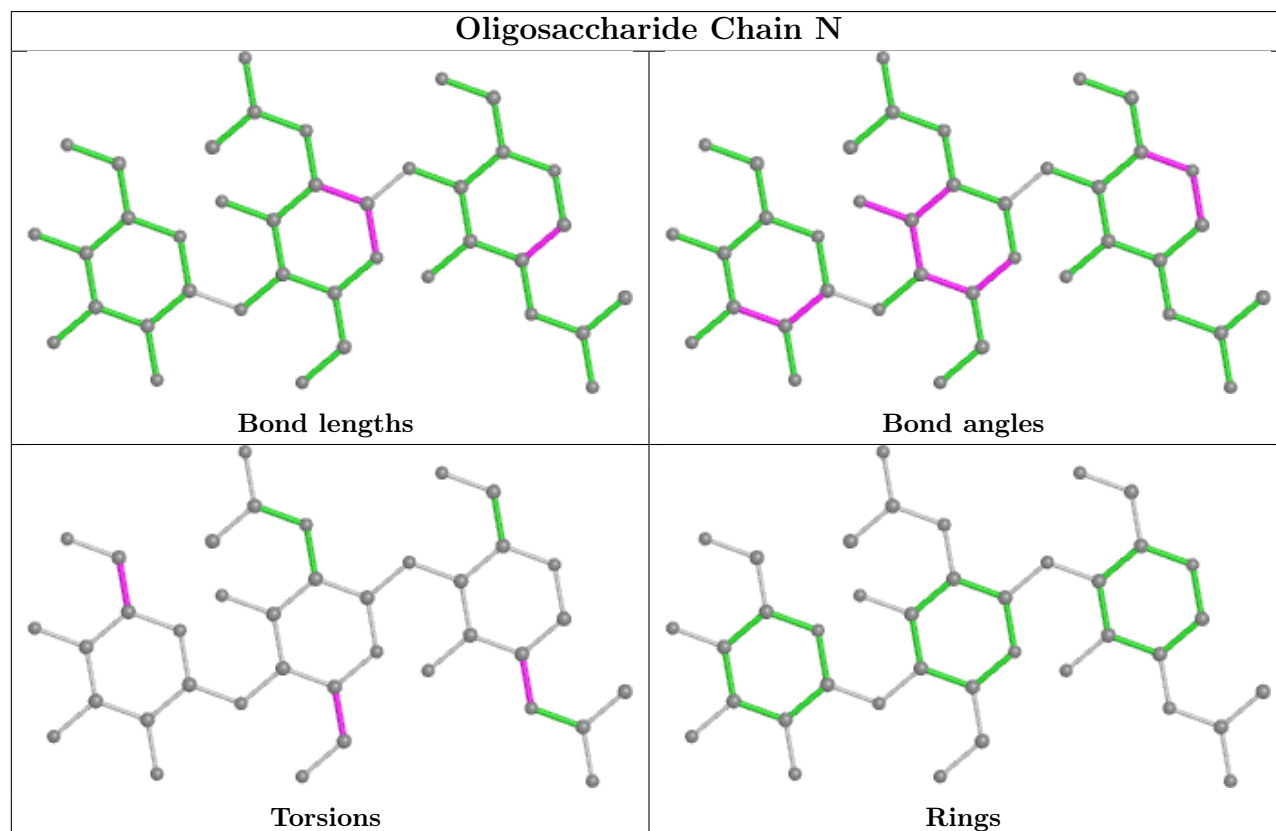
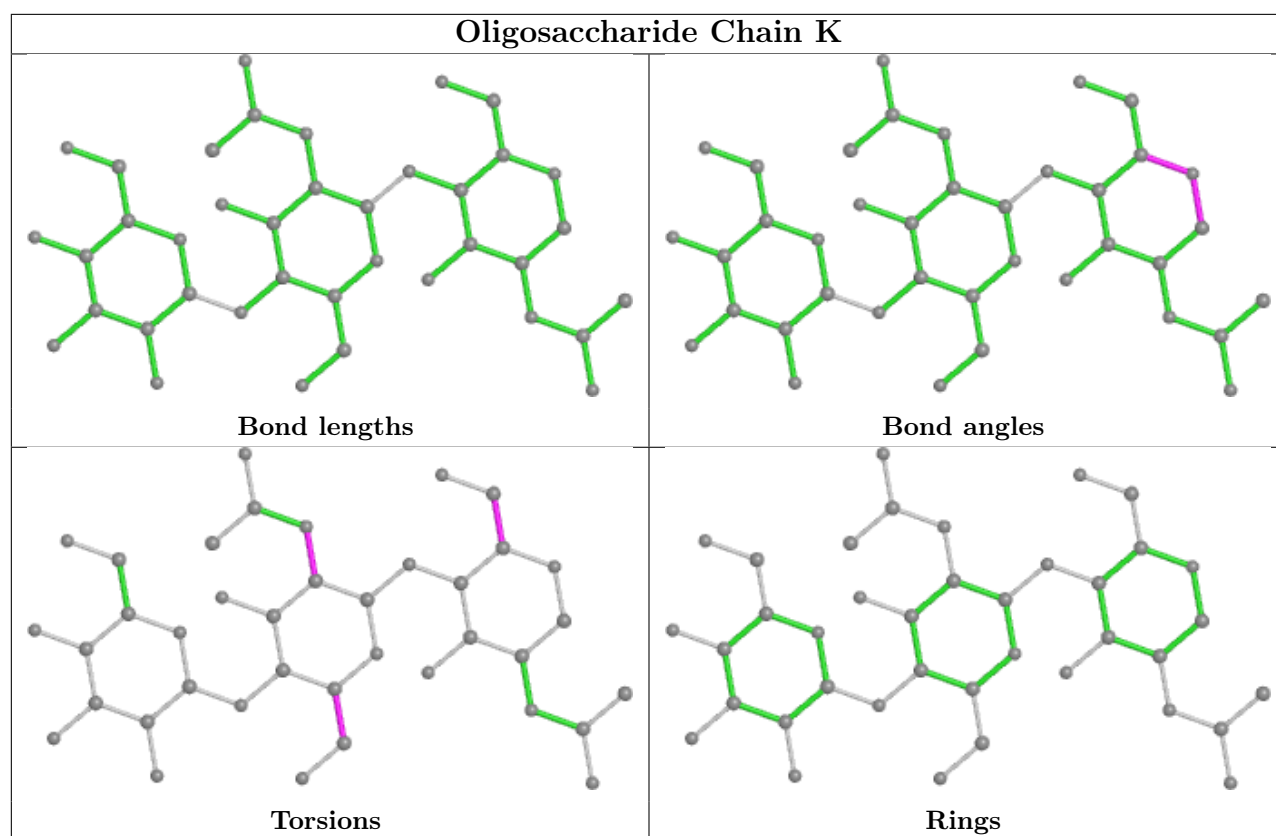
There are no ring outliers.

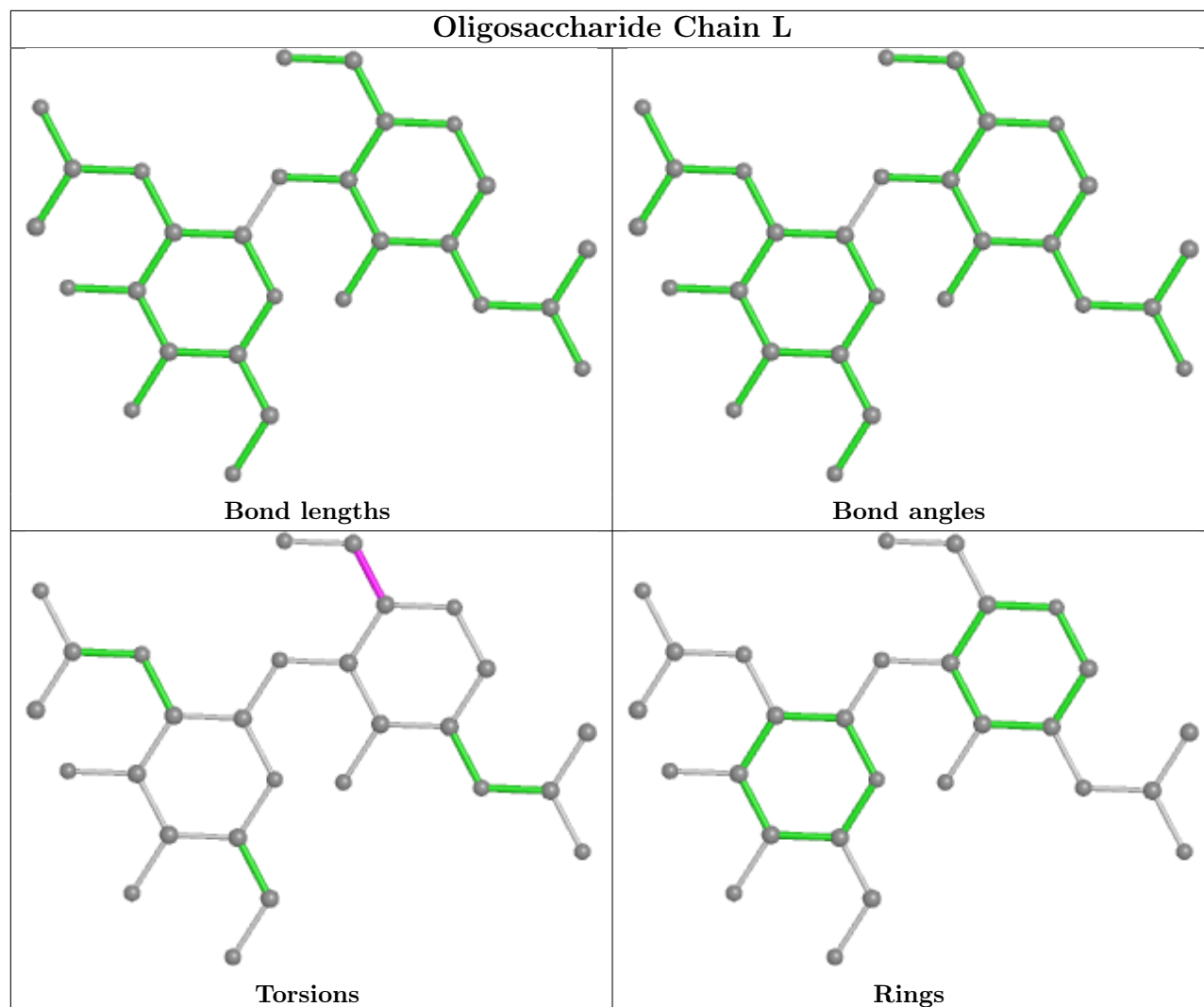
No monomer is involved in short contacts.

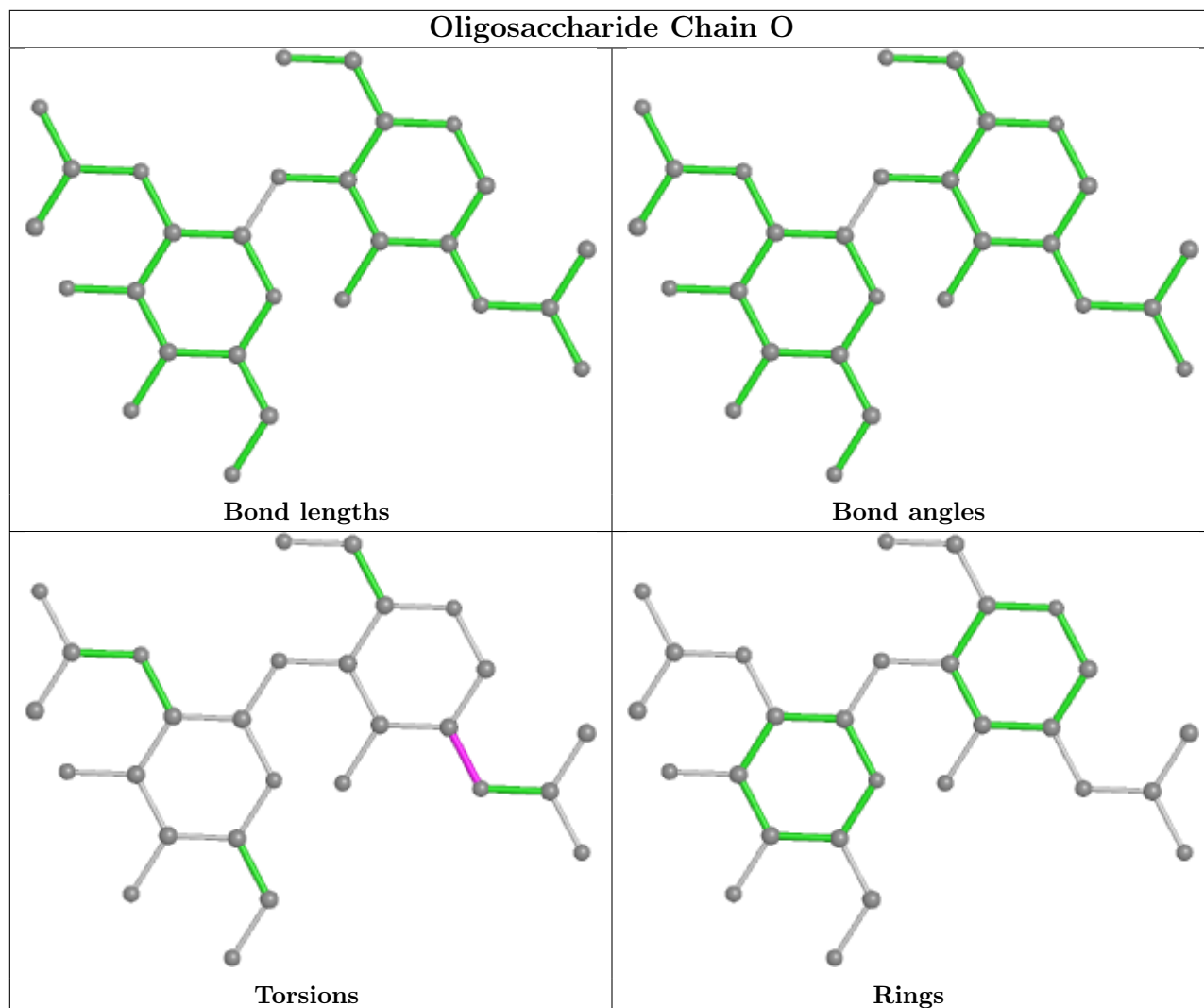
The following is a two-dimensional graphical depiction of Mogul quality analysis of bond lengths, bond angles, torsion angles, and ring geometry for oligosaccharide.











## 4.6 Ligand geometry [i](#)

1 ligand is modelled in this entry.

In the following table, the Counts columns list the number of bonds (or angles) for which Mogul statistics could be retrieved, the number of bonds (or angles) that are observed in the model and the number of bonds (or angles) that are defined in the Chemical Component Dictionary. The Link column lists molecule types, if any, to which the group is linked. The Z score for a bond length (or angle) is the number of standard deviations the observed value is removed from the expected value. A bond length (or angle) with  $|Z| > 2$  is considered an outlier worth inspection. RMSZ is the root-mean-square of all Z scores of the bond lengths (or angles).

Mol	Type	Chain	Res	Link	Bond lengths			Bond angles		
					Counts	RMSZ	# Z  > 2	Counts	RMSZ	# Z  > 2
8	NAG	C	301	2	14,14,15	0.46	0	17,19,21	0.65	1 (5%)

In the following table, the Chirals column lists the number of chiral outliers, the number of chiral

centers analysed, the number of these observed in the model and the number defined in the Chemical Component Dictionary. Similar counts are reported in the Torsion and Rings columns. '-' means no outliers of that kind were identified.

Mol	Type	Chain	Res	Link	Chirals	Torsions	Rings
8	NAG	C	301	2	-	0/6/23/26	0/1/1/1

There are no bond length outliers.

All (1) bond angle outliers are listed below:

Mol	Chain	Res	Type	Atoms	Z	Observed(°)	Ideal(°)
8	C	301	NAG	C1-O5-C5	2.30	115.30	112.19

There are no chirality outliers.

There are no torsion outliers.

There are no ring outliers.

No monomer is involved in short contacts.

#### 4.7 Other polymers [i](#)

There are no such residues in this entry.

#### 4.8 Polymer linkage issues [i](#)

There are no chain breaks in this entry.



## 5 Fit of model and data

### 5.1 Protein, DNA and RNA chains

EDS failed to run properly - this section is therefore empty.

### 5.2 Non-standard residues in protein, DNA, RNA chains

EDS failed to run properly - this section is therefore empty.

### 5.3 Carbohydrates

EDS failed to run properly - this section is therefore empty.

### 5.4 Ligands

EDS failed to run properly - this section is therefore empty.

### 5.5 Other polymers

EDS failed to run properly - this section is therefore empty.