



wwPDB EM Validation Summary Report ⓘ

Apr 22, 2024 – 09:03 pm BST

PDB ID : 7NCJ
EMDB ID : EMD-12268
Title : Type 2AB alpha-synuclein filament seeded in vitro by filaments purified from Multiple Systems Atrophy Case 1
Authors : Lovestam, S.K.A.; Schweighauser, M.; Scheres, S.H.W.
Deposited on : 2021-01-28
Resolution : 4.23 Å(reported)

This is a wwPDB EM Validation Summary Report for a publicly released PDB entry.

We welcome your comments at validation@mail.wwpdb.org

A user guide is available at

<https://www.wwpdb.org/validation/2017/EMValidationReportHelp>

with specific help available everywhere you see the ⓘ symbol.

The types of validation reports are described at

<http://www.wwpdb.org/validation/2017/FAQs#types>.

The following versions of software and data (see [references ⓘ](#)) were used in the production of this report:

EMDB validation analysis : 0.0.1.dev92
MolProbity : 4.02b-467
Percentile statistics : 20191225.v01 (using entries in the PDB archive December 25th 2019)
MapQ : 1.9.13
Ideal geometry (proteins) : Engh & Huber (2001)
Ideal geometry (DNA, RNA) : Parkinson et al. (1996)
Validation Pipeline (wwPDB-VP) : 2.36.2

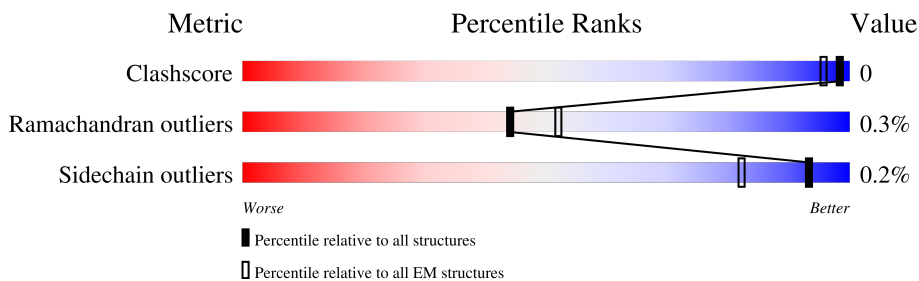
1 Overall quality at a glance

The following experimental techniques were used to determine the structure:

ELECTRON MICROSCOPY

The reported resolution of this entry is 4.23 Å.

Percentile scores (ranging between 0-100) for global validation metrics of the entry are shown in the following graphic. The table shows the number of entries on which the scores are based.







Metric	Whole archive (#Entries)	EM structures (#Entries)
Clashscore	158937	4297
Ramachandran outliers	154571	4023
Sidechain outliers	154315	3826

The table below summarises the geometric issues observed across the polymeric chains and their fit to the map. The red, orange, yellow and green segments of the bar indicate the fraction of residues that contain outliers for ≥ 3 , 2, 1 and 0 types of geometric quality criteria respectively. A grey segment represents the fraction of residues that are not modelled. The numeric value for each fraction is indicated below the corresponding segment, with a dot representing fractions $\leq 5\%$. The upper red bar (where present) indicates the fraction of residues that have poor fit to the EM map (all-atom inclusion $< 40\%$). The numeric value is given above the bar.

Mol	Chain	Length	Quality of chain
1	A	140	
1	B	140	
1	C	140	
1	D	140	
1	E	140	
1	F	140	
1	G	140	
1	H	140	

Continued on next page...

Continued from previous page...

Mol	Chain	Length	Quality of chain
1	I	140	 48% 51%
1	J	140	 47% 51%
1	K	140	 47% 51%
1	L	140	 49% 51%

2 Entry composition

There is only 1 type of molecule in this entry. The entry contains 10860 atoms, of which 5586 are hydrogens and 0 are deuteriums.

In the tables below, the AltConf column contains the number of residues with at least one atom in alternate conformation and the Trace column contains the number of residues modelled with at most 2 atoms.

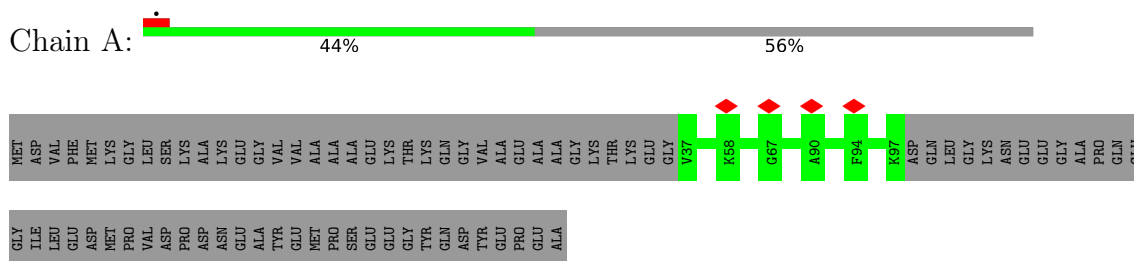
- Molecule 1 is a protein called Alpha-synuclein.

Mol	Chain	Residues	Atoms					AltConf	Trace
			Total	C	H	N	O		
1	A	61	Total 869	C 265	H 448	N 73	O 83	0	0
1	B	61	Total 869	C 265	H 448	N 73	O 83	0	0
1	C	61	Total 869	C 265	H 448	N 73	O 83	0	0
1	D	61	Total 869	C 265	H 448	N 73	O 83	0	0
1	E	61	Total 869	C 265	H 448	N 73	O 83	0	0
1	F	61	Total 869	C 265	H 448	N 73	O 83	0	0
1	G	68	Total 941	C 284	H 483	N 81	O 93	0	0
1	H	68	Total 941	C 284	H 483	N 81	O 93	0	0
1	I	68	Total 941	C 284	H 483	N 81	O 93	0	0
1	J	68	Total 941	C 284	H 483	N 81	O 93	0	0
1	K	68	Total 941	C 284	H 483	N 81	O 93	0	0
1	L	68	Total 941	C 284	H 483	N 81	O 93	0	0

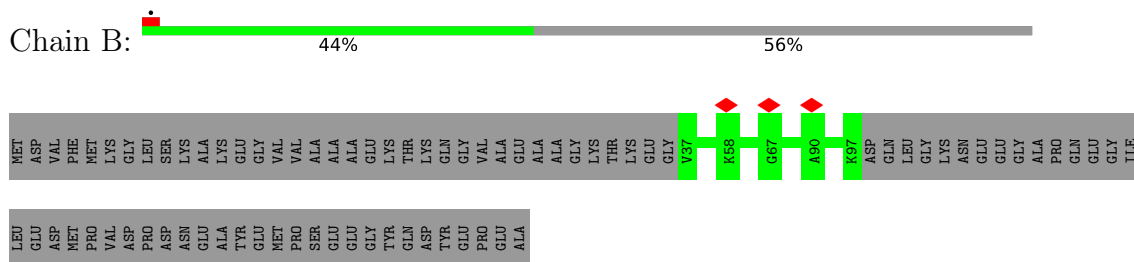
3 Residue-property plots [i](#)

These plots are drawn for all protein, RNA, DNA and oligosaccharide chains in the entry. The first graphic for a chain summarises the proportions of the various outlier classes displayed in the second graphic. The second graphic shows the sequence view annotated by issues in geometry and atom inclusion in map density. Residues are color-coded according to the number of geometric quality criteria for which they contain at least one outlier: green = 0, yellow = 1, orange = 2 and red = 3 or more. A red diamond above a residue indicates a poor fit to the EM map for this residue (all-atom inclusion < 40%). Stretches of 2 or more consecutive residues without any outlier are shown as a green connector. Residues present in the sample, but not in the model, are shown in grey.

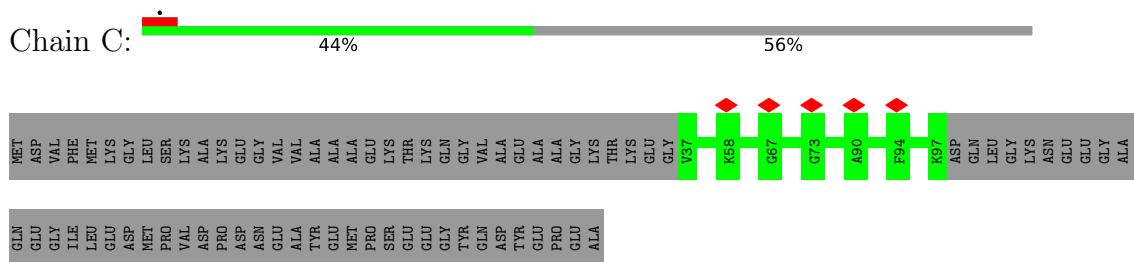
- Molecule 1: Alpha-synuclein



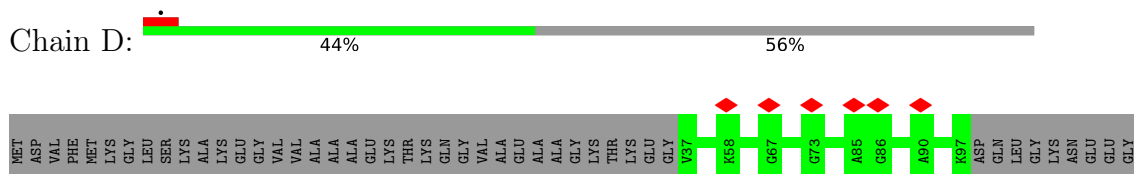
- Molecule 1: Alpha-synuclein



- Molecule 1: Alpha-synuclein



- Molecule 1: Alpha-synuclein



PRO GLN GLU
GLY ILE LEU
GLU ASP MET
PRO VAL PRO
ASP ASP PRO
ASP ASP ASN
GLU VAL ALA
ALA TYR TYR
GLU MET MET
PRO PRO SER
SER SER SER
GLU GLU GLY
TYR TYR TYR
GLN ASP ASP
TYR TYR TYR
PRO PRO PRO
GLU GLU ALA

• Molecule 1: Alpha-synuclein



MET VAL PHE MET LYS LEU
SER SER VAL ALA LYS VAL
GLY TYR ALA ALA TYR TYR
GLU MET MET MET MET MET
V57 K58 G67 G73 A85 A90 F94 K97
ASP GLN GLN
LEU LEU
GLY LYS
ASN ASN
GLU GLU
GLY GLY

ALA PRO GLN
GLY ILE LEU
GLU ASP MET
PRO VAL PRO
ASP ASP PRO
ASP ASP ASN
VAL VAL VAL
ALA TYR ALA
ALA TYR TYR
GLU MET MET
GLU MET MET
LYS LYS LYS
THR THR THR
SER SER SER
GLU GLU GLY
GLY TYR TYR
VAL VAL VAL
ALA TYR TYR
GLU GLU GLU
ALA TYR TYR
PRO PRO PRO
GLY LYS LYS
LYS THR
LYS TYR
GLN TYR
VAL VAL
ASP TYR
GLU TYR
ALA TYR
PRO PRO
GLU GLU
ALA TYR

• Molecule 1: Alpha-synuclein



MET ASP VAL PHE MET LYS LEU
SER SER VAL ALA LYS VAL
GLY TYR ALA ALA TYR TYR
GLU MET MET MET MET MET
V57 K58 G67 G73 A85 A90 F94 K97
GLN LEU
LEU LEU
LYS LYS
ASN ASN
GLU GLU
GLY GLY

GLN GLU
ILE ILE
LEU LEU
ASP MET
PRO PRO
VAL VAL
ASP ASP
ASN ASN
VAL VAL
ALA TYR ALA
ALA TYR TYR
GLU MET MET
GLU MET MET
LYS LYS LYS
THR THR THR
SER SER SER
GLU GLU GLY
GLY TYR TYR
VAL VAL
ALA TYR
GLU TYR
ALA TYR
PRO PRO
GLU GLU
ALA TYR

• Molecule 1: Alpha-synuclein



MET ASP VAL PHE MET LYS LEU
SER SER VAL ALA LYS VAL
GLY TYR ALA ALA TYR TYR
GLU MET MET MET MET MET
G14 G25 VAL
ALA GLU
GLU TYR
GLN TYR
ASP ASP
TYR TYR
THR THR
LYS LYS
LYS TYR
GLU TYR
GLY TYR
THR THR
LYS LYS
LYS TYR
G36 K58 Q62 E83 S87 A91
THR GLY
PHE VAL
LYS LYS
ASP ASP
LEU LEU
GLY LYS
ASN ASN
GLY GLY
GLY GLY
GLU GLY
ALA TYR
PRO PRO
GLN GLY
GLY GLY
PRO PRO
GLN GLY
ILE ILE
LEU LEU
GLY ASP
MET MET
LEU LEU
GLU ASP

ASP MET PRO
VAL PHE
ASP ASP
ASN ASN
GLU GLU
ALA TYR
ALA TYR
MET MET
PRO PRO
SER SER
GLU TYR
GLY TYR
GLN TYR
ASP ASP
TYR TYR
THR THR
LYS LYS
LYS TYR
GLU TYR
GLY TYR
THR THR
LYS LYS
LYS TYR
ALA TYR

• Molecule 1: Alpha-synuclein



MET ASP VAL PHE MET LYS LEU
SER SER VAL ALA LYS VAL
GLY TYR ALA ALA TYR TYR
GLU MET MET MET MET MET
G14 G25 VAL
ALA GLU
GLU TYR
GLN TYR
ASP ASP
TYR TYR
THR THR
LYS LYS
LYS TYR
GLU TYR
GLY TYR
THR THR
LYS LYS
LYS TYR
G36 K58 T59 E83 A91
THR GLY
PHE VAL
LYS LYS
ASP ASP
LEU LEU
GLY LYS
ASN ASN
GLY GLY
GLY GLY
GLU GLY
ALA TYR
PRO PRO
GLN GLY
GLY GLY
PRO PRO
GLN GLY
ILE ILE
LEU LEU
GLY ASP
MET MET
LEU LEU
GLU ASP

VAL ASP PRO
VAL PHE
ASP ASP
ASN ASN
GLU GLU
ALA TYR
ALA TYR
MET MET
PRO PRO
SER SER
GLU TYR
GLY TYR
GLN TYR
ASP ASP
TYR TYR
THR THR
LYS LYS
LYS TYR
GLU TYR
GLY TYR
THR THR
LYS LYS
LYS TYR
ALA TYR

• Molecule 1: Alpha-synuclein



MET ASP VAL PHE MET LYS LEU
SER SER VAL ALA LYS VAL
GLY TYR ALA ALA TYR TYR
GLU MET MET MET MET MET
G14 G25 VAL
ALA GLU
GLU TYR
GLN TYR
ASP ASP
TYR TYR
THR THR
LYS LYS
LYS TYR
GLU TYR
GLY TYR
THR THR
LYS LYS
LYS TYR
G36 A56 E57 K68 T69 E83 A91
THR GLY
PHE VAL
LYS LYS
ASP ASP
LEU LEU
GLY LYS
ASN ASN
GLY GLY
GLY GLY
GLU GLY
ALA TYR
PRO PRO
GLN GLY
GLY GLY
PRO PRO
GLN GLY
ILE ILE
LEU LEU
GLY ASP
MET MET
LEU LEU
GLU ASP

VAL ASP PRO
VAL PHE
ASP ASP
ASN ASN
GLU GLU
ALA TYR
ALA TYR
MET MET
PRO PRO
SER SER
GLU TYR
GLY TYR
GLN TYR
ASP ASP
TYR TYR
THR THR
LYS LYS
LYS TYR
GLU TYR
GLY TYR
THR THR
LYS LYS
LYS TYR
ALA TYR

MET
PRO
ASP
VAL
PHE
ASP
PRO
MET
LYS
GLY
LEU
SER
LYS
ALA
GLU
TYR
MET
GLU
PRO
SER
GLU
GLY
TYR
GLN
ASP
TYR
GLU
PRO
GLU
ALA

● Molecule 1: Alpha-synuclein



MET
ASP
VAL
PHE
MET
PRO
MET
LYS
GLY
LEU
SER
LYS
ALA
GLU
TYR
MET
GLU
PRO
SER
GLU
VAL
ALA
GLU
TYR
GLN
ASP
TYR
GLU
PRO
GLU
ALA
GLU
TYR
GLN
ASP
TYR
THR
LYS
GLU
PRO
GLU
ALA
G14
G25
V55
A56
E57
K58
T59
Q79
E83
A91
THR
GLY
PHE
VAL
LYS
LYS
ASP
GLN
LEU
GLY
LYS
ASN
GLU
GLY
GLU
PRO
GLN
ALA
GLY
ILE

LEU
GLU
ASP
MET
PRO
VAL
ASP
PRO
ASP
TYR
ASN
GLU
ALA
TYR
GLU
MET
PRO
SER
GLU
GLY
TYR
GLN
ASP
TYR
GLU
PRO
GLU
ALA

● Molecule 1: Alpha-synuclein



MET
ASP
VAL
PHE
MET
PRO
MET
LYS
GLY
LEU
SER
LYS
ALA
GLU
TYR
MET
GLU
PRO
SER
GLU
VAL
ALA
GLU
TYR
GLN
ASP
TYR
GLU
PRO
GLU
ALA
GLU
TYR
GLN
ASP
TYR
THR
LYS
GLU
PRO
GLU
ALA
G14
G25
V55
A56
E57
K58
T59
Q62
A91
THR
GLY
PHE
VAL
LYS
LYS
ASP
GLN
LEU
GLY
LYS
ASN
GLU
GLY
GLU
PRO
GLN
ALA
GLY
ILE
LEU
GLU
MET
PRO
GLU

ASP
MET
PRO
VAL
PHE
ASP
PRO
MET
LYS
GLY
LEU
SER
LYS
ALA
TYR
ASN
GLU
MET
PRO
SER
GLU
GLY
TYR
GLN
ASP
TYR
GLU
PRO
GLU
ALA

● Molecule 1: Alpha-synuclein



MET
ASP
VAL
PHE
ASP
ASN
GLU
ALA
TYR
GLU
SER
LYS
PRO
MET
GLU
TYR
GLY
TYR
GLN
ASP
TYR
GLU
PRO
GLU
GLU
ALA
GLU
TYR
GLN
ASP
TYR
GLU
PRO
GLU
GLU
ALA
GLU
TYR
GLN
ASP
TYR
GLU
PRO
GLU
GLU
ALA
G14
G25
V55
A56
E57
K58
A91
THR
GLY
PHE
VAL
LYS
LYS
ASP
GLN
LEU
GLY
LYS
ASN
GLU
GLY
GLY
ALA
PRO
GLN
GLU
GLY
ILE
LEU
GLU
ASP
MET
PRO
GLU

VAL
ASP
PRO
PHE
ASP
ASN
GLU
ALA
TYR
GLU
SER
LYS
PRO
MET
GLU
TYR
GLY
TYR
GLN
ASP
TYR
GLU
PRO
GLU
GLU
ALA

4 Experimental information

Property	Value	Source
EM reconstruction method	HELICAL	Depositor
Imposed symmetry	HELICAL, twist=-0.86°, rise=4.80 Å, axial sym=C1	Depositor
Number of segments used	57358	Depositor
Resolution determination method	FSC 0.143 CUT-OFF	Depositor
CTF correction method	PHASE FLIPPING AND AMPLITUDE CORRECTION	Depositor
Microscope	FEI TITAN KRIOS	Depositor
Voltage (kV)	300	Depositor
Electron dose ($e^-/\text{Å}^2$)	32.6	Depositor
Minimum defocus (nm)	1500	Depositor
Maximum defocus (nm)	3000	Depositor
Magnification	Not provided	
Image detector	GATAN K2 SUMMIT (4k x 4k)	Depositor
Maximum map value	0.056	Depositor
Minimum map value	-0.046	Depositor
Average map value	0.000	Depositor
Map value standard deviation	0.001	Depositor
Recommended contour level	0.007	Depositor
Map size (Å)	281.6, 281.6, 281.6	wwPDB
Map dimensions	256, 256, 256	wwPDB
Map angles (°)	90.0, 90.0, 90.0	wwPDB
Pixel spacing (Å)	1.1, 1.1, 1.1	Depositor

5 Model quality [i](#)

5.1 Standard geometry [i](#)

The Z score for a bond length (or angle) is the number of standard deviations the observed value is removed from the expected value. A bond length (or angle) with $|Z| > 5$ is considered an outlier worth inspection. RMSZ is the root-mean-square of all Z scores of the bond lengths (or angles).

Mol	Chain	Bond lengths		Bond angles	
		RMSZ	# Z >5	RMSZ	# Z >5
1	A	0.49	0/423	0.65	0/572
1	B	0.53	0/423	0.65	0/572
1	C	0.52	0/423	0.65	0/572
1	D	0.51	0/423	0.64	0/572
1	E	0.55	0/423	0.73	0/572
1	F	0.53	0/423	0.69	0/572
1	G	0.49	0/458	0.85	0/618
1	H	0.49	0/458	0.80	0/618
1	I	0.47	0/458	0.80	0/618
1	J	0.49	0/458	0.80	0/618
1	K	0.48	0/458	0.81	0/618
1	L	0.50	0/458	0.80	0/618
All	All	0.50	0/5286	0.75	0/7140

Chiral center outliers are detected by calculating the chiral volume of a chiral center and verifying if the center is modelled as a planar moiety or with the opposite hand. A planarity outlier is detected by checking planarity of atoms in a peptide group, atoms in a mainchain group or atoms of a sidechain that are expected to be planar.

Mol	Chain	#Chirality outliers	#Planarity outliers
1	G	0	1

There are no bond length outliers.

There are no bond angle outliers.

There are no chirality outliers.

All (1) planarity outliers are listed below:

Mol	Chain	Res	Type	Group
1	G	87	SER	Peptide

5.2 Too-close contacts [i](#)

In the following table, the Non-H and H(model) columns list the number of non-hydrogen atoms and hydrogen atoms in the chain respectively. The H(added) column lists the number of hydrogen atoms added and optimized by MolProbity. The Clashes column lists the number of clashes within the asymmetric unit, whereas Symm-Clashes lists symmetry-related clashes.

Mol	Chain	Non-H	H(model)	H(added)	Clashes	Symm-Clashes
1	A	421	448	447	0	0
1	B	421	448	447	0	0
1	C	421	448	447	0	0
1	D	421	448	447	0	0
1	E	421	448	447	0	0
1	F	421	448	447	0	0
1	G	458	483	481	0	0
1	H	458	483	481	1	0
1	I	458	483	481	1	0
1	J	458	483	481	1	0
1	K	458	483	481	1	0
1	L	458	483	481	0	0
All	All	5274	5586	5568	2	0

The all-atom clashscore is defined as the number of clashes found per 1000 atoms (including hydrogen atoms). The all-atom clashscore for this structure is 0.

All (2) close contacts within the same asymmetric unit are listed below, sorted by their clash magnitude.

Atom-1	Atom-2	Interatomic distance (Å)	Clash overlap (Å)
1:H:59:THR:HG23	1:I:59:THR:O	2.12	0.49
1:J:59:THR:HG23	1:K:59:THR:O	2.16	0.45

There are no symmetry-related clashes.

5.3 Torsion angles [i](#)

5.3.1 Protein backbone [i](#)

In the following table, the Percentiles column shows the percent Ramachandran outliers of the chain as a percentile score with respect to all PDB entries followed by that with respect to all EM entries.

The Analysed column shows the number of residues for which the backbone conformation was analysed, and the total number of residues.

Mol	Chain	Analysed	Favoured	Allowed	Outliers	Percentiles	
1	A	59/140 (42%)	55 (93%)	4 (7%)	0	100	100
1	B	59/140 (42%)	55 (93%)	4 (7%)	0	100	100
1	C	59/140 (42%)	56 (95%)	3 (5%)	0	100	100
1	D	59/140 (42%)	55 (93%)	4 (7%)	0	100	100
1	E	59/140 (42%)	55 (93%)	4 (7%)	0	100	100
1	F	59/140 (42%)	51 (86%)	8 (14%)	0	100	100
1	G	64/140 (46%)	58 (91%)	5 (8%)	1 (2%)	9	45
1	H	64/140 (46%)	59 (92%)	5 (8%)	0	100	100
1	I	64/140 (46%)	60 (94%)	4 (6%)	0	100	100
1	J	64/140 (46%)	59 (92%)	5 (8%)	0	100	100
1	K	64/140 (46%)	58 (91%)	5 (8%)	1 (2%)	9	45
1	L	64/140 (46%)	58 (91%)	6 (9%)	0	100	100
All	All	738/1680 (44%)	679 (92%)	57 (8%)	2 (0%)	44	76

All (2) Ramachandran outliers are listed below:

Mol	Chain	Res	Type
1	G	62	GLN
1	K	62	GLN

5.3.2 Protein sidechains [i](#)

In the following table, the Percentiles column shows the percent sidechain outliers of the chain as a percentile score with respect to all PDB entries followed by that with respect to all EM entries.

The Analysed column shows the number of residues for which the sidechain conformation was analysed, and the total number of residues.

Mol	Chain	Analysed	Rotameric	Outliers	Percentiles	
1	A	43/103 (42%)	43 (100%)	0	100	100
1	B	43/103 (42%)	43 (100%)	0	100	100
1	C	43/103 (42%)	43 (100%)	0	100	100
1	D	43/103 (42%)	43 (100%)	0	100	100
1	E	43/103 (42%)	43 (100%)	0	100	100
1	F	43/103 (42%)	43 (100%)	0	100	100

Continued on next page...

Continued from previous page...

Mol	Chain	Analysed	Rotameric	Outliers	Percentiles	
1	G	45/103 (44%)	45 (100%)	0	100	100
1	H	45/103 (44%)	45 (100%)	0	100	100
1	I	45/103 (44%)	45 (100%)	0	100	100
1	J	45/103 (44%)	44 (98%)	1 (2%)	52	71
1	K	45/103 (44%)	45 (100%)	0	100	100
1	L	45/103 (44%)	45 (100%)	0	100	100
All	All	528/1236 (43%)	527 (100%)	1 (0%)	93	96

All (1) residues with a non-rotameric sidechain are listed below:

Mol	Chain	Res	Type
1	J	79	GLN

Sometimes sidechains can be flipped to improve hydrogen bonding and reduce clashes. All (4) such sidechains are listed below:

Mol	Chain	Res	Type
1	C	50	HIS
1	D	50	HIS
1	J	50	HIS
1	K	50	HIS

5.3.3 RNA [i](#)

There are no RNA molecules in this entry.

5.4 Non-standard residues in protein, DNA, RNA chains [i](#)

There are no non-standard protein/DNA/RNA residues in this entry.

5.5 Carbohydrates [i](#)

There are no monosaccharides in this entry.

5.6 Ligand geometry [i](#)

There are no ligands in this entry.

5.7 Other polymers [i](#)

There are no such residues in this entry.

5.8 Polymer linkage issues [i](#)

There are no chain breaks in this entry.

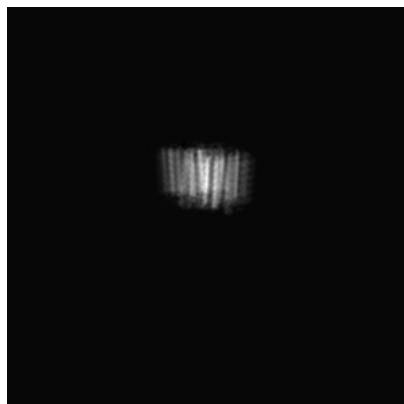
6 Map visualisation [i](#)

This section contains visualisations of the EMDB entry EMD-12268. These allow visual inspection of the internal detail of the map and identification of artifacts.

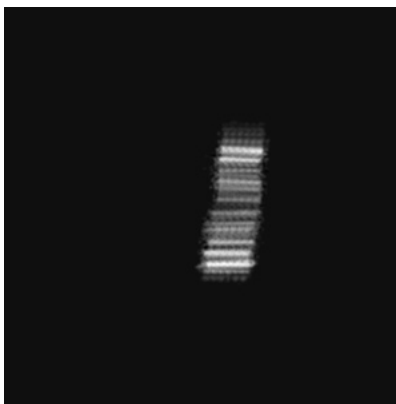
Images derived from a raw map, generated by summing the deposited half-maps, are presented below the corresponding image components of the primary map to allow further visual inspection and comparison with those of the primary map.

6.1 Orthogonal projections [i](#)

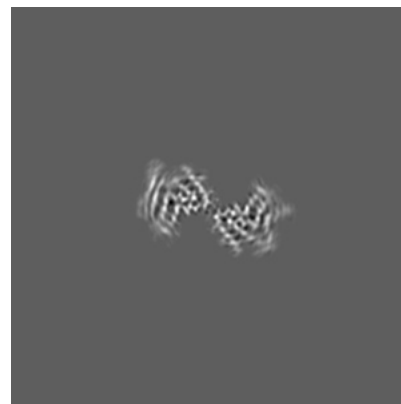
6.1.1 Primary map



X

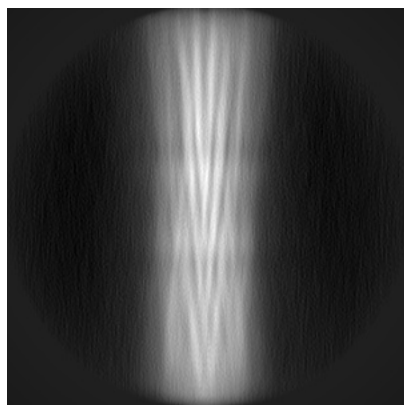


Y

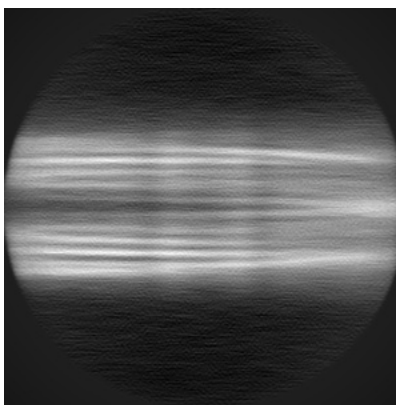


Z

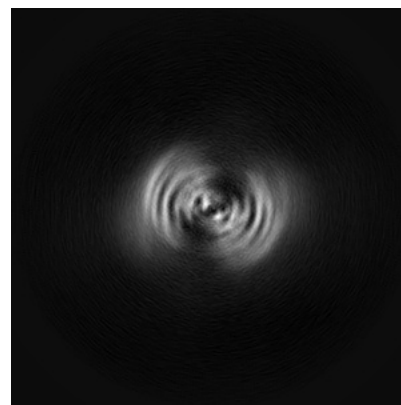
6.1.2 Raw map



X



Y

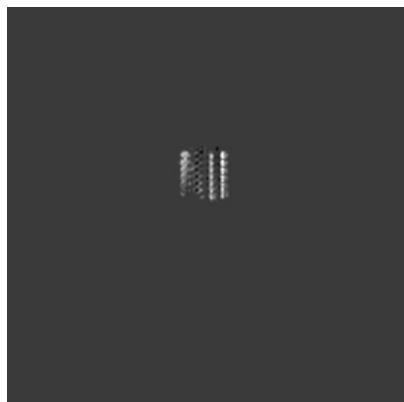


Z

The images above show the map projected in three orthogonal directions.

6.2 Central slices [i](#)

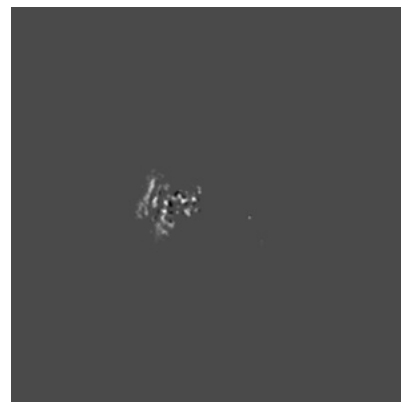
6.2.1 Primary map



X Index: 128

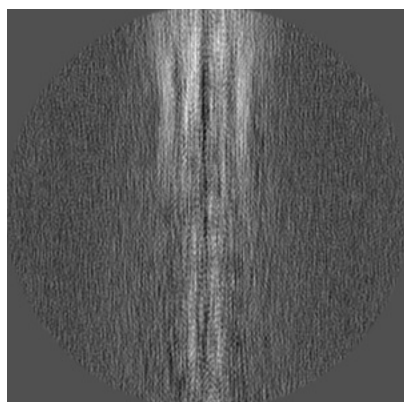


Y Index: 128

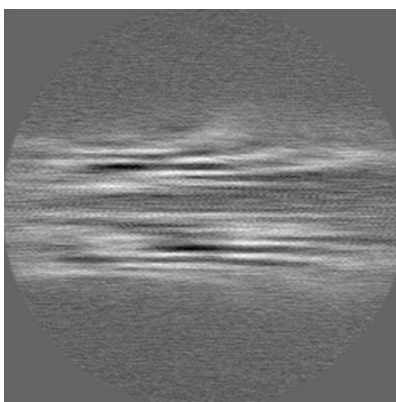


Z Index: 128

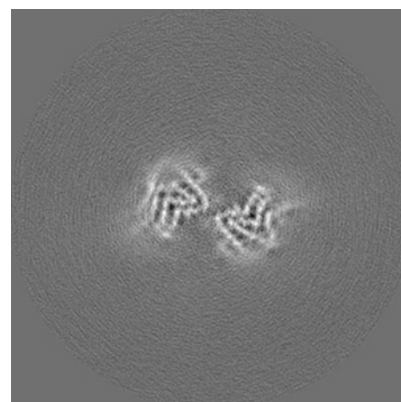
6.2.2 Raw map



X Index: 128



Y Index: 128

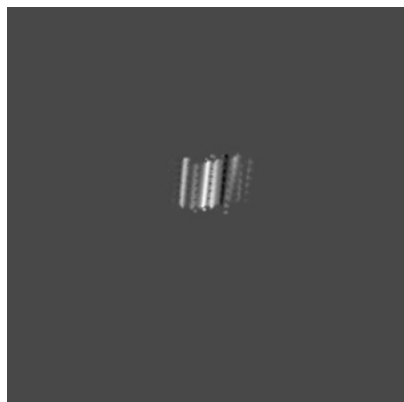


Z Index: 128

The images above show central slices of the map in three orthogonal directions.

6.3 Largest variance slices [i](#)

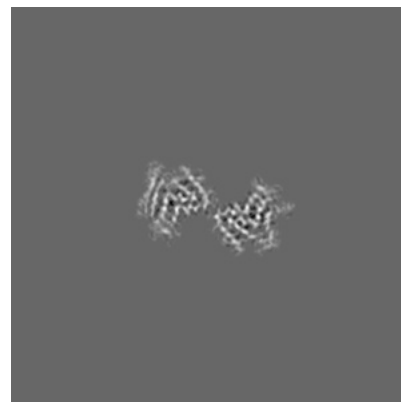
6.3.1 Primary map



X Index: 98

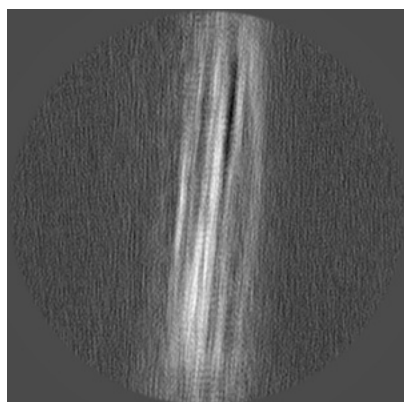


Y Index: 126

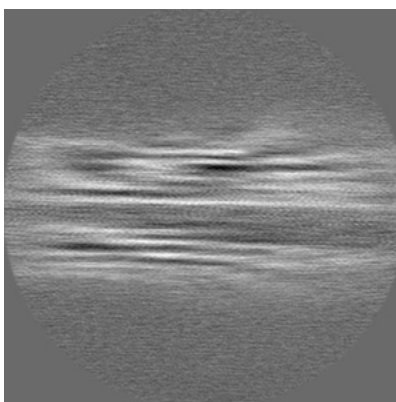


Z Index: 140

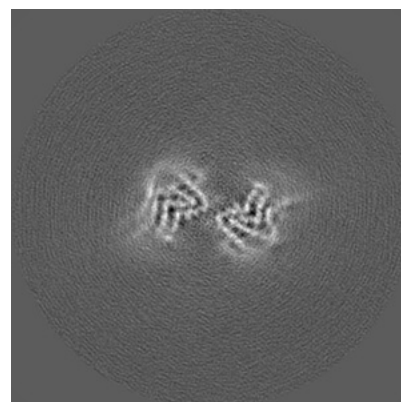
6.3.2 Raw map



X Index: 99



Y Index: 122

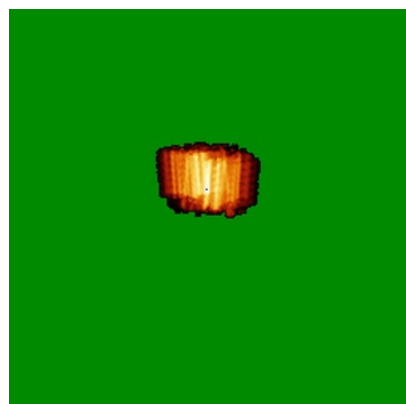


Z Index: 108

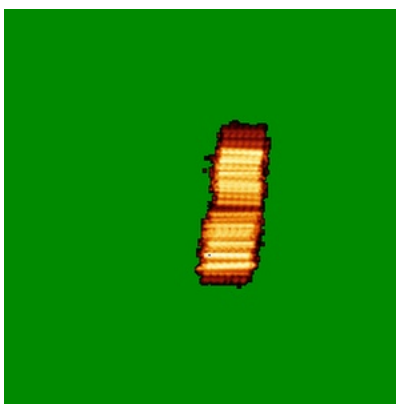
The images above show the largest variance slices of the map in three orthogonal directions.

6.4 Orthogonal standard-deviation projections (False-color) [i](#)

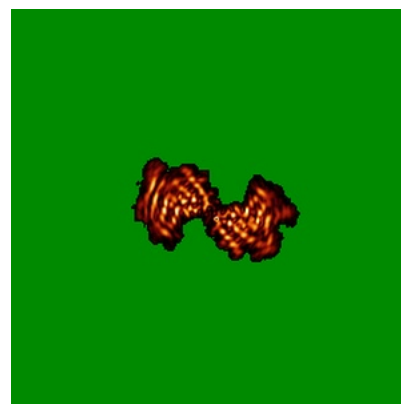
6.4.1 Primary map



X

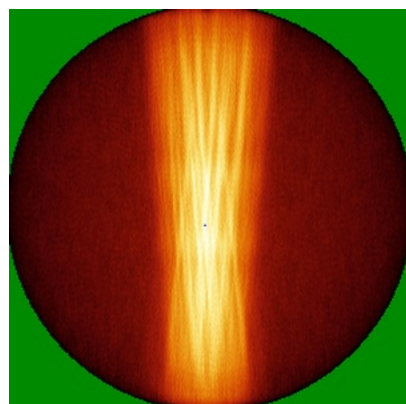


Y

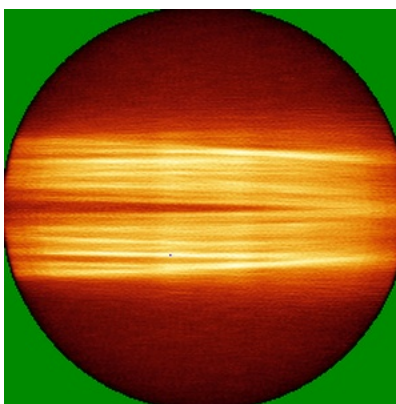


Z

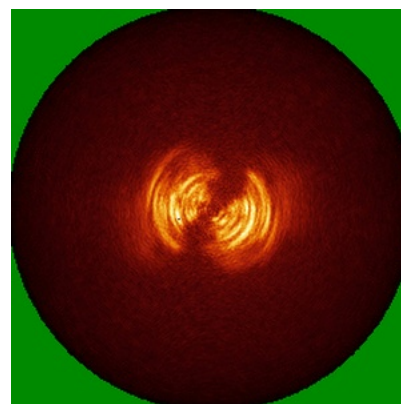
6.4.2 Raw map



X



Y

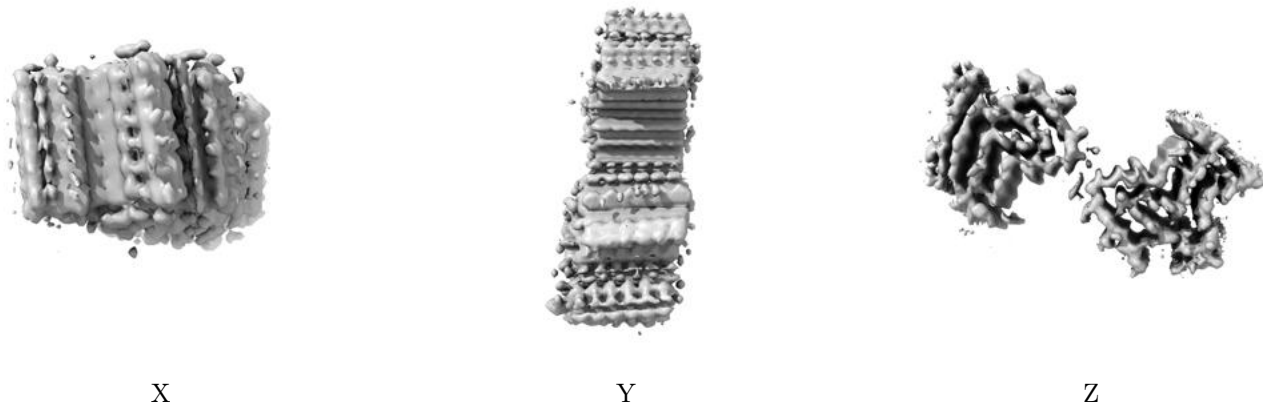


Z

The images above show the map standard deviation projections with false color in three orthogonal directions. Minimum values are shown in green, max in blue, and dark to light orange shades represent small to large values respectively.

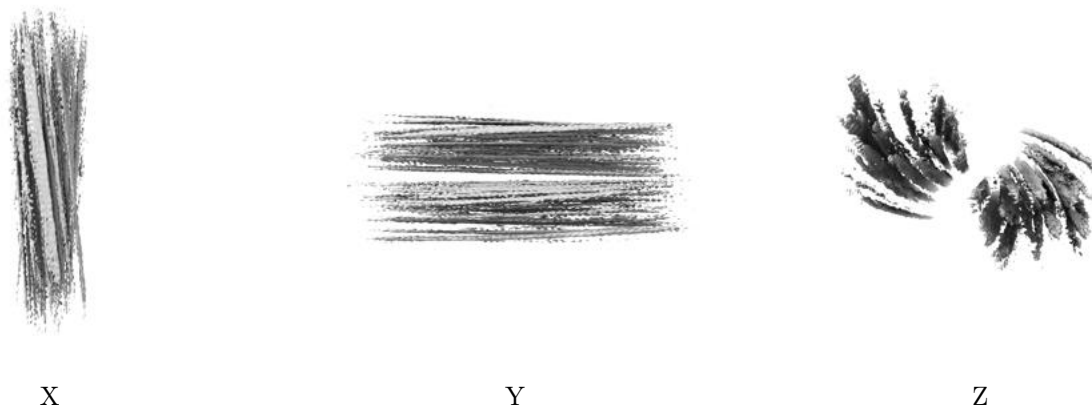
6.5 Orthogonal surface views [i](#)

6.5.1 Primary map



The images above show the 3D surface view of the map at the recommended contour level 0.007. These images, in conjunction with the slice images, may facilitate assessment of whether an appropriate contour level has been provided.

6.5.2 Raw map



These images show the 3D surface of the raw map. The raw map's contour level was selected so that its surface encloses the same volume as the primary map does at its recommended contour level.

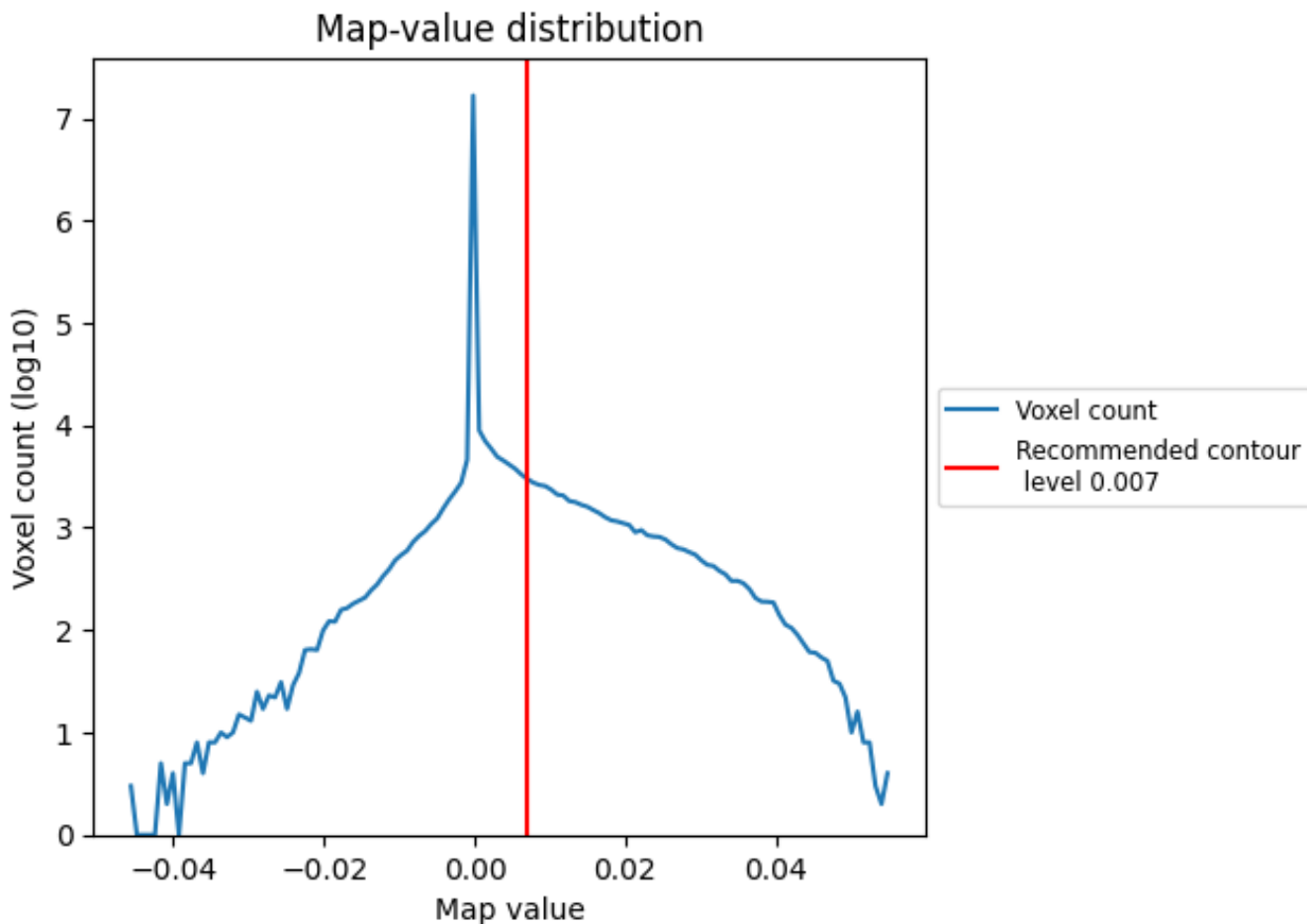
6.6 Mask visualisation [i](#)

This section was not generated. No masks/segmentation were deposited.

7 Map analysis [i](#)

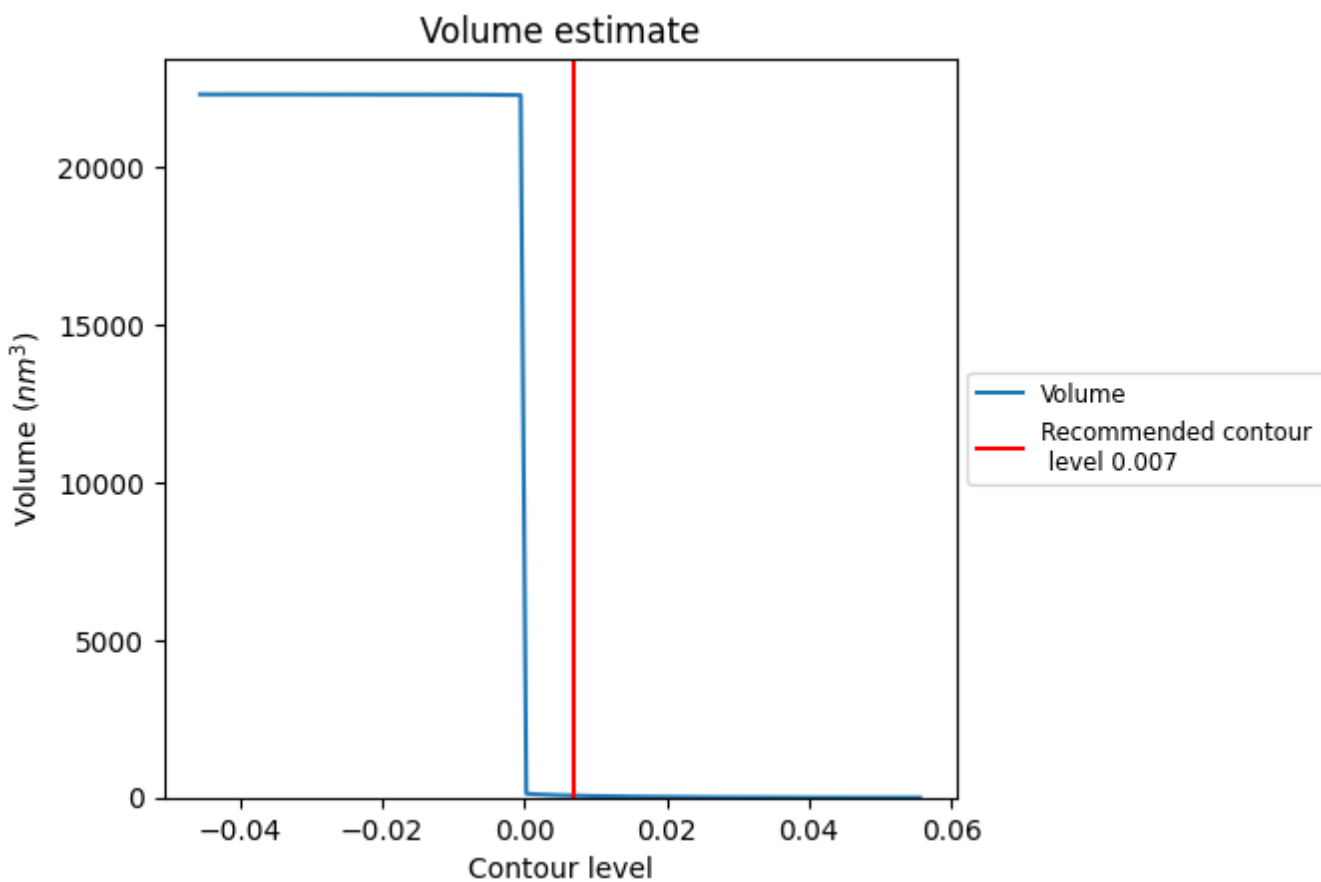
This section contains the results of statistical analysis of the map.

7.1 Map-value distribution [i](#)



The map-value distribution is plotted in 128 intervals along the x-axis. The y-axis is logarithmic. A spike in this graph at zero usually indicates that the volume has been masked.

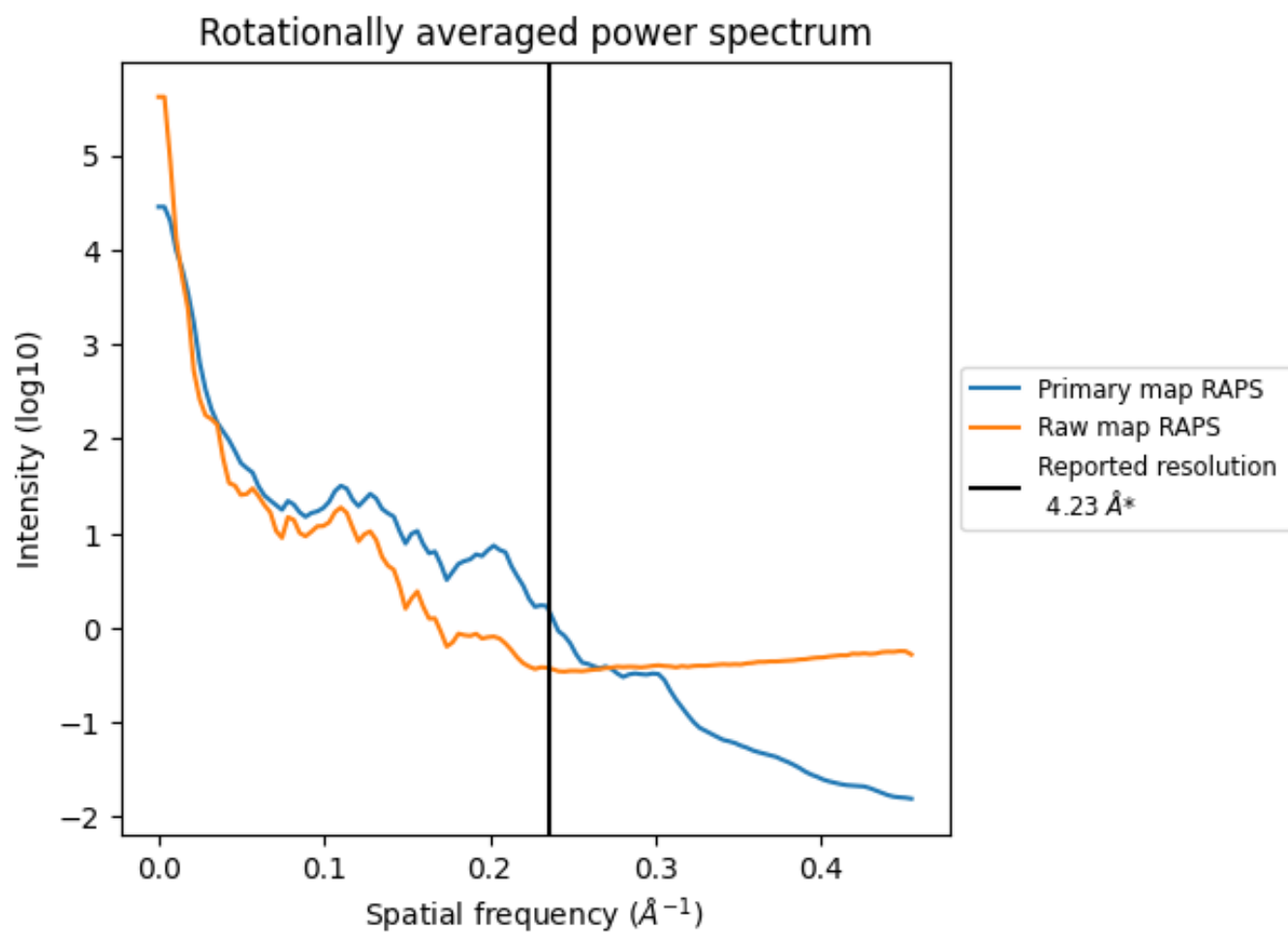
7.2 Volume estimate [\(i\)](#)



The volume at the recommended contour level is 61 nm³; this corresponds to an approximate mass of 55 kDa.

The volume estimate graph shows how the enclosed volume varies with the contour level. The recommended contour level is shown as a vertical line and the intersection between the line and the curve gives the volume of the enclosed surface at the given level.

7.3 Rotationally averaged power spectrum [i](#)

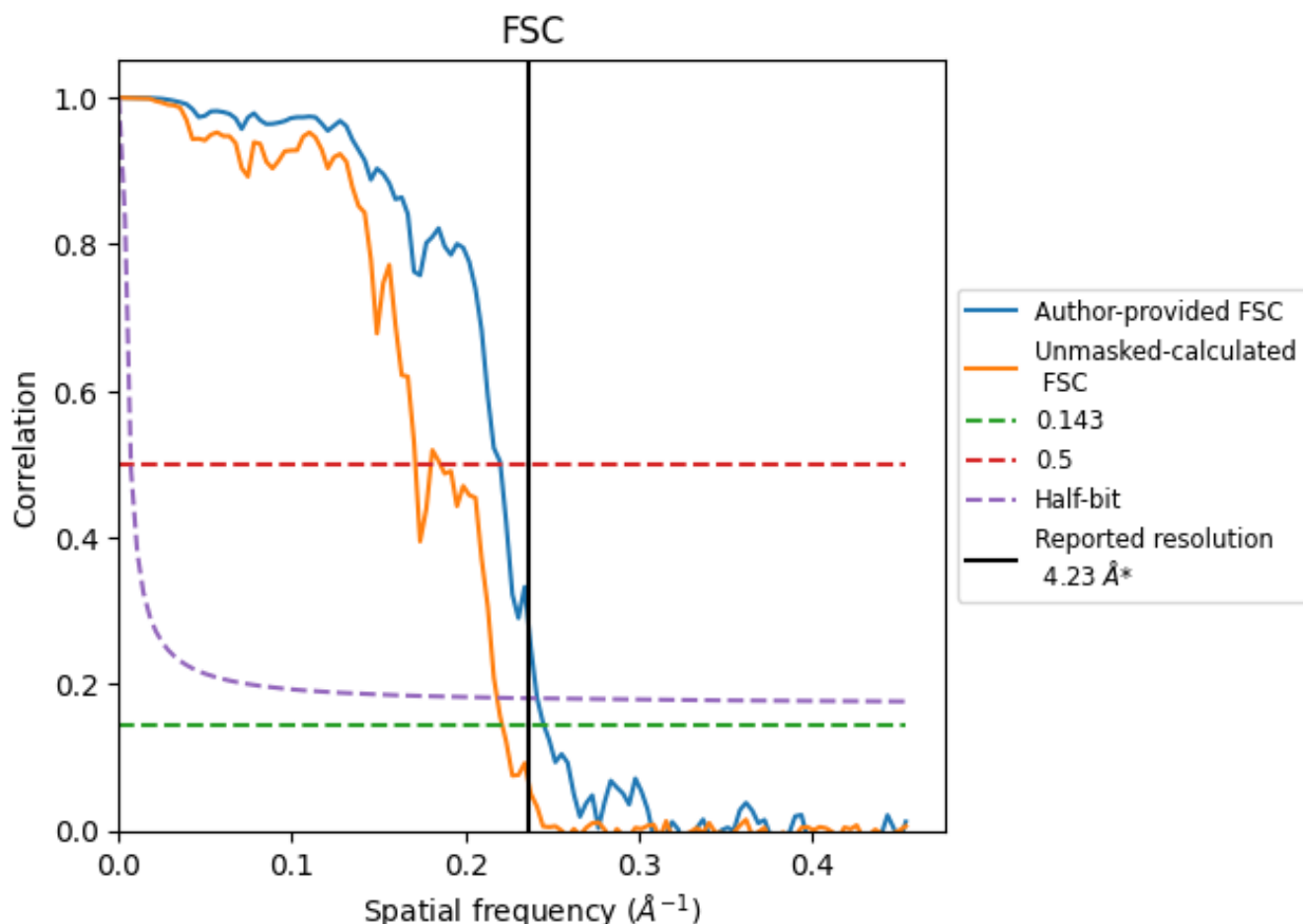


*Reported resolution corresponds to spatial frequency of 0.236 Å⁻¹

8 Fourier-Shell correlation [i](#)

Fourier-Shell Correlation (FSC) is the most commonly used method to estimate the resolution of single-particle and subtomogram-averaged maps. The shape of the curve depends on the imposed symmetry, mask and whether or not the two 3D reconstructions used were processed from a common reference. The reported resolution is shown as a black line. A curve is displayed for the half-bit criterion in addition to lines showing the 0.143 gold standard cut-off and 0.5 cut-off.

8.1 FSC [i](#)



*Reported resolution corresponds to spatial frequency of 0.236 Å⁻¹

8.2 Resolution estimates [i](#)

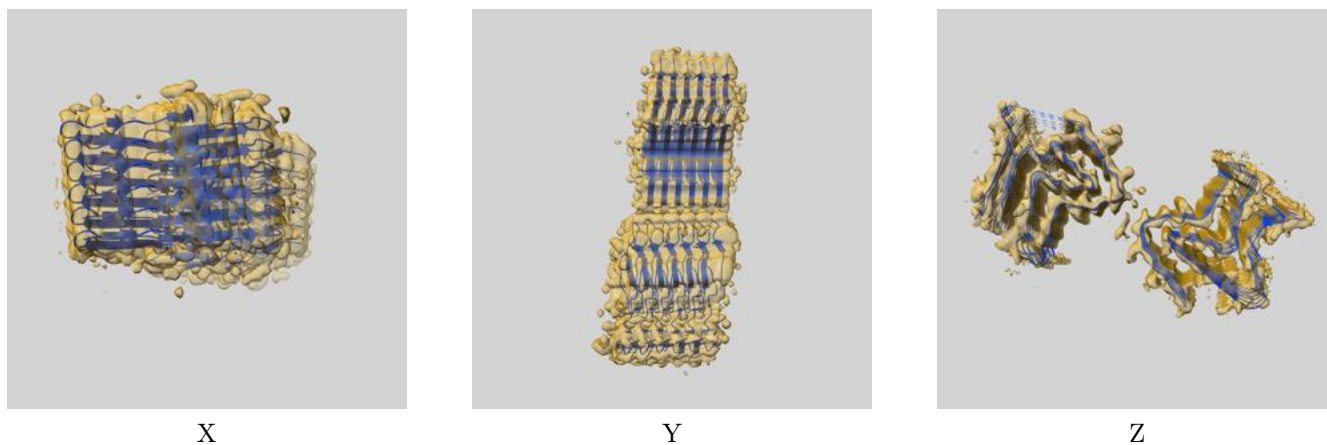
Resolution estimate (Å)	Estimation criterion (FSC cut-off)		
	0.143	0.5	Half-bit
Reported by author	4.23	-	-
Author-provided FSC curve	4.07	4.54	4.14
Unmasked-calculated*	4.51	5.84	4.58

*Resolution estimate based on FSC curve calculated by comparison of deposited half-maps.

9 Map-model fit [i](#)

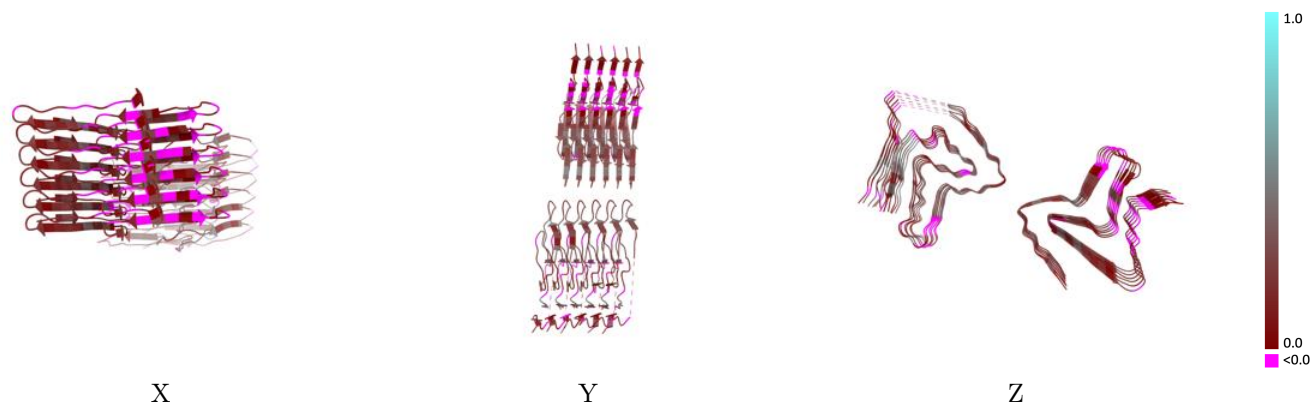
This section contains information regarding the fit between EMDB map EMD-12268 and PDB model 7NCJ. Per-residue inclusion information can be found in section 3 on page 5.

9.1 Map-model overlay [i](#)



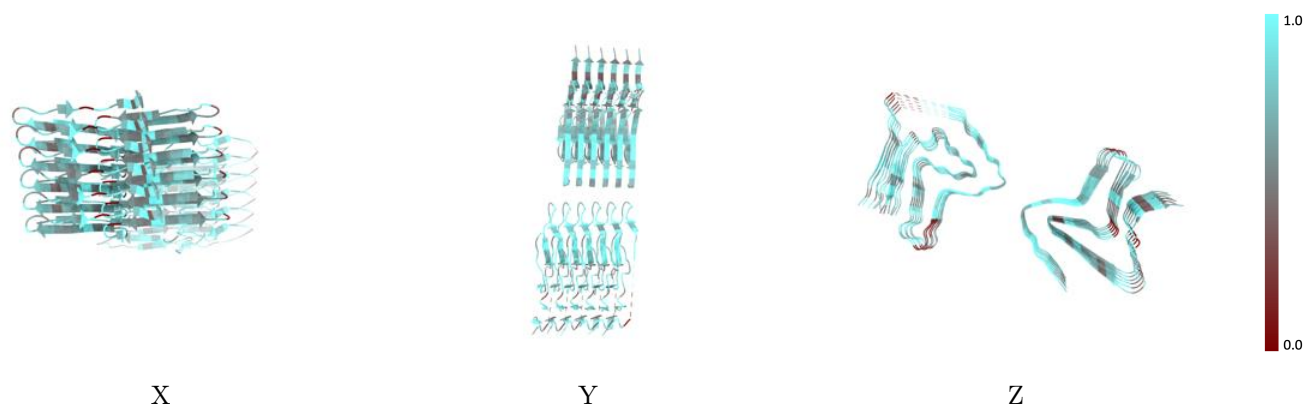
The images above show the 3D surface view of the map at the recommended contour level 0.007 at 50% transparency in yellow overlaid with a ribbon representation of the model coloured in blue. These images allow for the visual assessment of the quality of fit between the atomic model and the map.

9.2 Q-score mapped to coordinate model [i](#)



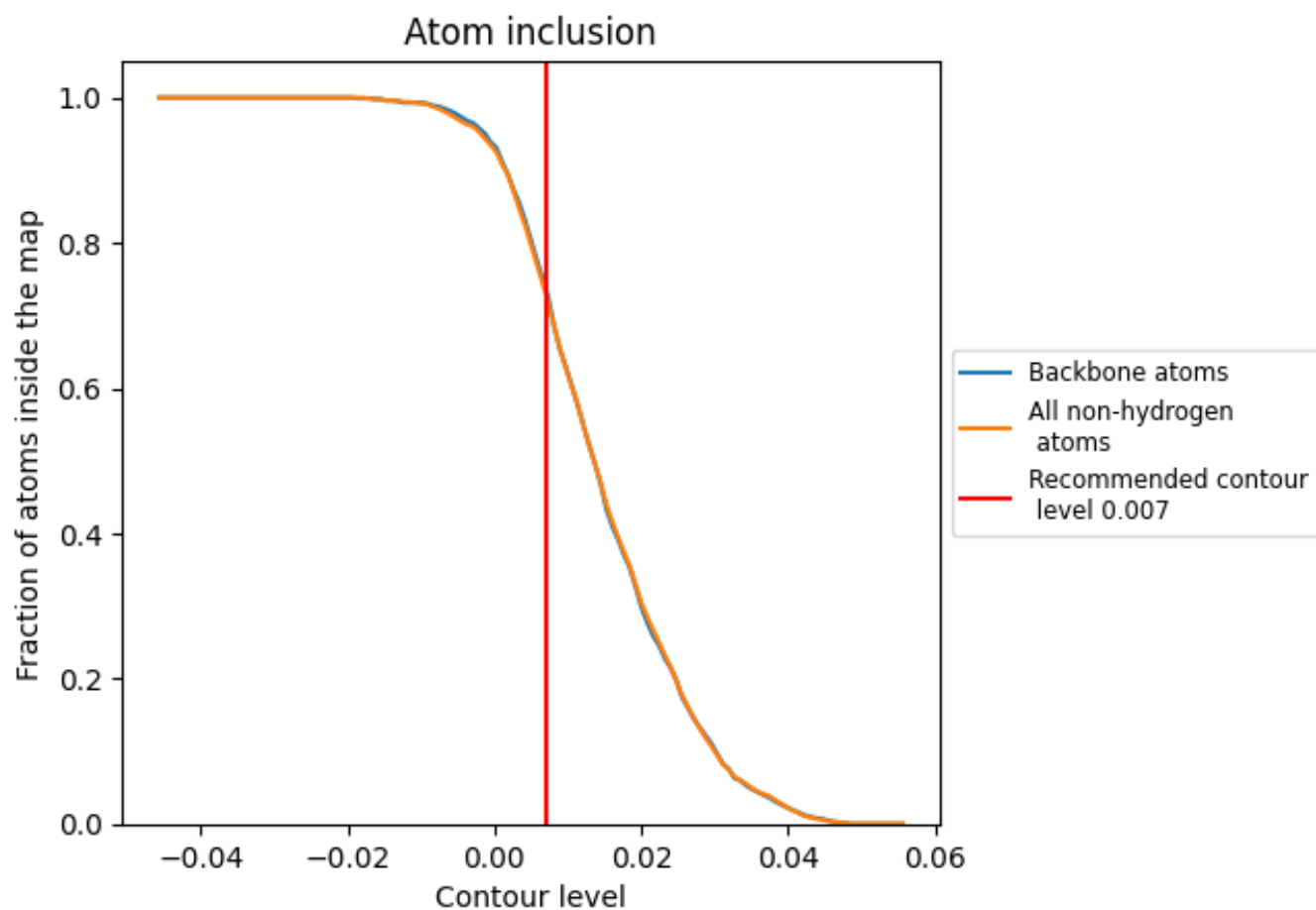
The images above show the model with each residue coloured according to its Q-score. This shows their resolvability in the map with higher Q-score values reflecting better resolvability. Please note: Q-score is calculating the resolvability of atoms, and thus high values are only expected at resolutions at which atoms can be resolved. Low Q-score values may therefore be expected for many entries.

9.3 Atom inclusion mapped to coordinate model [i](#)



The images above show the model with each residue coloured according to its atom inclusion. This shows to what extent they are inside the map at the recommended contour level (0.007).



























9.4 Atom inclusion [i](#)



At the recommended contour level, 74% of all backbone atoms, 73% of all non-hydrogen atoms, are inside the map.

9.5 Map-model fit summary

The table lists the average atom inclusion at the recommended contour level (0.007) and Q-score for the entire model and for each chain.

Chain	Atom inclusion	Q-score
All	 0.7300	 0.1760
A	 0.7100	 0.1540
B	 0.7050	 0.1370
C	 0.6980	 0.1380
D	 0.7020	 0.1310
E	 0.7020	 0.1430
F	 0.7120	 0.1520
G	 0.7860	 0.2220
H	 0.7700	 0.1970
I	 0.7770	 0.1980
J	 0.7700	 0.2200
K	 0.7660	 0.1940
L	 0.7590	 0.2080

