



Full wwPDB X-ray Structure Validation Report ⓘ

Jan 7, 2024 – 09:16 am GMT

PDB ID : 5N6N
Title : CRYSTAL STRUCTURE OF THE 14-3-3:NEUTRAL TREHALASE NTH1 COMPLEX
Authors : Alblova, M.; Smidova, A.; Obsilova, V.; Obsil, T.
Deposited on : 2017-02-15
Resolution : 2.29 Å(reported)

This is a Full wwPDB X-ray Structure Validation Report for a publicly released PDB entry.

We welcome your comments at validation@mail.wwpdb.org

A user guide is available at

<https://www.wwpdb.org/validation/2017/XrayValidationReportHelp>

with specific help available everywhere you see the ⓘ symbol.

The types of validation reports are described at

<http://www.wwpdb.org/validation/2017/FAQs#types>.

The following versions of software and data (see [references ⓘ](#)) were used in the production of this report:

MolProbity : 4.02b-467
Mogul : 1.8.4, CSD as541be (2020)
Xtriage (Phenix) : 1.13
EDS : 2.36
Percentile statistics : 20191225.v01 (using entries in the PDB archive December 25th 2019)
Refmac : 5.8.0158
CCP4 : 7.0.044 (Gargrove)
Ideal geometry (proteins) : Engh & Huber (2001)
Ideal geometry (DNA, RNA) : Parkinson et al. (1996)
Validation Pipeline (wwPDB-VP) : 2.36

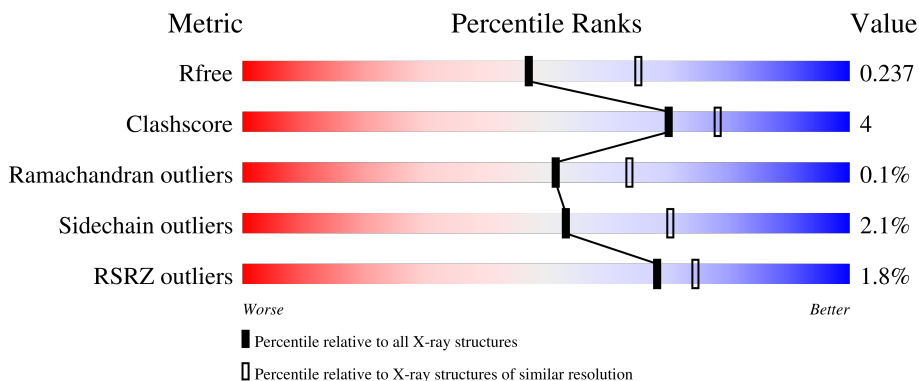
1 Overall quality at a glance i

The following experimental techniques were used to determine the structure:

X-RAY DIFFRACTION

The reported resolution of this entry is 2.29 Å.

Percentile scores (ranging between 0-100) for global validation metrics of the entry are shown in the following graphic. The table shows the number of entries on which the scores are based.




Metric	Whole archive (#Entries)	Similar resolution (#Entries, resolution range(Å))
R_{free}	130704	5042 (2.30-2.30)
Clashscore	141614	5643 (2.30-2.30)
Ramachandran outliers	138981	5575 (2.30-2.30)
Sidechain outliers	138945	5575 (2.30-2.30)
RSRZ outliers	127900	4938 (2.30-2.30)

The table below summarises the geometric issues observed across the polymeric chains and their fit to the electron density. The red, orange, yellow and green segments of the lower bar indicate the fraction of residues that contain outliers for ≥ 3 , 2, 1 and 0 types of geometric quality criteria respectively. A grey segment represents the fraction of residues that are not modelled. The numeric value for each fraction is indicated below the corresponding segment, with a dot representing fractions $\leq 5\%$. The upper red bar (where present) indicates the fraction of residues that have poor fit to the electron density. The numeric value is given above the bar.

Mol	Chain	Length	Quality of chain
1	A	240	<div style="display: flex; align-items: center;"> <div style="width: 2%; height: 10px; background-color: red; margin-right: 2px;"></div> <div style="width: 88%; height: 10px; background-color: green; margin-right: 2px;"></div> <div style="width: 9%; height: 10px; background-color: yellow; margin-right: 2px;"></div> <div style="width: 3%; height: 10px; background-color: grey;"></div> </div> <p style="margin-left: 20px;">88% 9%</p>
1	B	240	<div style="display: flex; align-items: center;"> <div style="width: 3%; height: 10px; background-color: red; margin-right: 2px;"></div> <div style="width: 83%; height: 10px; background-color: green; margin-right: 2px;"></div> <div style="width: 10%; height: 10px; background-color: yellow; margin-right: 2px;"></div> <div style="width: 7%; height: 10px; background-color: grey;"></div> </div> <p style="margin-left: 20px;">83% 10% 7%</p>
2	C	756	<div style="display: flex; align-items: center;"> <div style="width: 2%; height: 10px; background-color: red; margin-right: 2px;"></div> <div style="width: 81%; height: 10px; background-color: green; margin-right: 2px;"></div> <div style="width: 11%; height: 10px; background-color: yellow; margin-right: 2px;"></div> <div style="width: 8%; height: 10px; background-color: grey;"></div> </div> <p style="margin-left: 20px;">81% 11% 8%</p>
3	D	2	<div style="display: flex; align-items: center;"> <div style="width: 50%; height: 10px; background-color: green; margin-right: 2px;"></div> <div style="width: 50%; height: 10px; background-color: yellow;"></div> </div> <p style="margin-left: 20px;">50% 50%</p>
3	E	2	<div style="display: flex; align-items: center;"> <div style="width: 50%; height: 10px; background-color: green; margin-right: 2px;"></div> <div style="width: 50%; height: 10px; background-color: orange;"></div> </div> <p style="margin-left: 20px;">50% 50%</p>

Continued on next page...

Continued from previous page...

Mol	Chain	Length	Quality of chain
3	F	2	 50% 50%

2 Entry composition [i](#)

There are 5 unique types of molecules in this entry. The entry contains 9670 atoms, of which 0 are hydrogens and 0 are deuteriums.

In the tables below, the ZeroOcc column contains the number of atoms modelled with zero occupancy, the AltConf column contains the number of residues with at least one atom in alternate conformation and the Trace column contains the number of residues modelled with at most 2 atoms.

- Molecule 1 is a protein called Protein BMH1.

Mol	Chain	Residues	Atoms						ZeroOcc	AltConf	Trace
			Total	As	C	N	O	S			
1	A	231	1822	2	1142	302	370	6	0	0	0
1	B	224	1750	2	1096	294	352	6	0	0	0

There are 8 discrepancies between the modelled and reference sequences:

Chain	Residue	Modelled	Actual	Comment	Reference
A	-3	GLY	-	expression tag	UNP P29311
A	-2	SER	-	expression tag	UNP P29311
A	-1	HIS	-	expression tag	UNP P29311
A	0	MET	-	expression tag	UNP P29311
B	-3	GLY	-	expression tag	UNP P29311
B	-2	SER	-	expression tag	UNP P29311
B	-1	HIS	-	expression tag	UNP P29311
B	0	MET	-	expression tag	UNP P29311

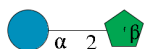
- Molecule 2 is a protein called Neutral trehalase.

Mol	Chain	Residues	Atoms						ZeroOcc	AltConf	Trace	
			Total	As	C	N	O	P				S
2	C	698	5580	1	3562	942	1051	2	22	0	0	0

There are 5 discrepancies between the modelled and reference sequences:

Chain	Residue	Modelled	Actual	Comment	Reference
C	-4	GLY	-	expression tag	UNP P32356
C	-3	SER	-	expression tag	UNP P32356
C	-2	ALA	-	expression tag	UNP P32356
C	-1	MET	-	expression tag	UNP P32356
C	0	ALA	-	expression tag	UNP P32356

- Molecule 3 is an oligosaccharide called beta-D-fructofuranose-(2-1)-alpha-D-glucopyranose.



Mol	Chain	Residues	Atoms			ZeroOcc	AltConf	Trace
3	D	2	Total	C	O	0	0	0
			23	12	11			
3	E	2	Total	C	O	0	0	0
			23	12	11			
3	F	2	Total	C	O	0	0	0
			23	12	11			

- Molecule 4 is CALCIUM ION (three-letter code: CA) (formula: Ca).

Mol	Chain	Residues	Atoms		ZeroOcc	AltConf
4	C	1	Total	Ca	0	0
			1	1		

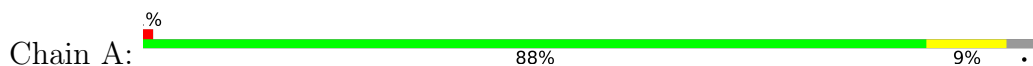
- Molecule 5 is water.

Mol	Chain	Residues	Atoms		ZeroOcc	AltConf
5	A	85	Total	O	0	0
			85	85		
5	B	43	Total	O	0	0
			43	43		
5	C	320	Total	O	0	0
			320	320		

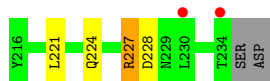
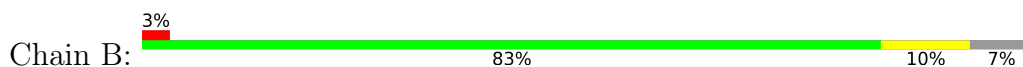
3 Residue-property plots [i](#)

These plots are drawn for all protein, RNA, DNA and oligosaccharide chains in the entry. The first graphic for a chain summarises the proportions of the various outlier classes displayed in the second graphic. The second graphic shows the sequence view annotated by issues in geometry and electron density. Residues are color-coded according to the number of geometric quality criteria for which they contain at least one outlier: green = 0, yellow = 1, orange = 2 and red = 3 or more. A red dot above a residue indicates a poor fit to the electron density ($RSRZ > 2$). Stretches of 2 or more consecutive residues without any outlier are shown as a green connector. Residues present in the sample, but not in the model, are shown in grey.

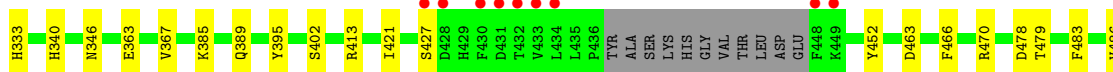
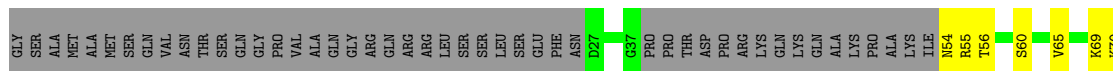
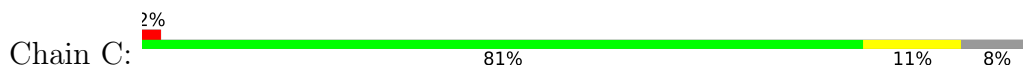
- Molecule 1: Protein BMH1



- Molecule 1: Protein BMH1



- Molecule 2: Neutral trehalase



- Molecule 3: beta-D-fructofuranose-(2-1)-alpha-D-glucopyranose





GLC1
FRU2

- Molecule 3: beta-D-fructofuranose-(2-1)-alpha-D-glucopyranose

Chain E:  50% 50%



GLC1
FRU2

- Molecule 3: beta-D-fructofuranose-(2-1)-alpha-D-glucopyranose

Chain F:  50% 50%



GLC1
FRU2

4 Data and refinement statistics

Property	Value	Source
Space group	C 1 2 1	Depositor
Cell constants a, b, c, α , β , γ	160.81Å 104.75Å 105.64Å 90.00° 121.89° 90.00°	Depositor
Resolution (Å)	46.16 – 2.29 46.15 – 2.29	Depositor EDS
% Data completeness (in resolution range)	97.2 (46.16-2.29) 97.2 (46.15-2.29)	Depositor EDS
R_{merge}	(Not available)	Depositor
R_{sym}	0.12	Depositor
$\langle I/\sigma(I) \rangle$ ¹	1.49 (at 2.29Å)	Xtrriage
Refinement program	PHENIX (1.11.1_2575: ???)	Depositor
R, R_{free}	0.184 , 0.237 0.184 , 0.237	Depositor DCC
R_{free} test set	2101 reflections (3.21%)	wwPDB-VP
Wilson B-factor (Å ²)	33.0	Xtrriage
Anisotropy	0.670	Xtrriage
Bulk solvent k_{sol} (e/Å ³), B_{sol} (Å ²)	0.35 , 44.9	EDS
L-test for twinning ²	$\langle L \rangle = 0.49$, $\langle L^2 \rangle = 0.32$	Xtrriage
Estimated twinning fraction	No twinning to report.	Xtrriage
F_o, F_c correlation	0.95	EDS
Total number of atoms	9670	wwPDB-VP
Average B, all atoms (Å ²)	40.0	wwPDB-VP

Xtrriage's analysis on translational NCS is as follows: *The largest off-origin peak in the Patterson function is 4.00% of the height of the origin peak. No significant pseudotranslation is detected.*

¹Intensities estimated from amplitudes.

²Theoretical values of $\langle |L| \rangle$, $\langle L^2 \rangle$ for acentric reflections are 0.5, 0.333 respectively for untwinned datasets, and 0.375, 0.2 for perfectly twinned datasets.

5 Model quality

5.1 Standard geometry

Bond lengths and bond angles in the following residue types are not validated in this section: GLC, CAS, CA, SEP, FRU

The Z score for a bond length (or angle) is the number of standard deviations the observed value is removed from the expected value. A bond length (or angle) with $|Z| > 5$ is considered an outlier worth inspection. RMSZ is the root-mean-square of all Z scores of the bond lengths (or angles).

Mol	Chain	Bond lengths		Bond angles	
		RMSZ	# Z >5	RMSZ	# Z >5
1	A	0.41	0/1832	0.52	0/2477
1	B	0.38	0/1758	0.51	0/2376
2	C	0.47	0/5693	0.57	0/7721
All	All	0.44	0/9283	0.55	0/12574

There are no bond length outliers.

There are no bond angle outliers.

There are no chirality outliers.

There are no planarity outliers.

5.2 Too-close contacts

In the following table, the Non-H and H(model) columns list the number of non-hydrogen atoms and hydrogen atoms in the chain respectively. The H(added) column lists the number of hydrogen atoms added and optimized by MolProbity. The Clashes column lists the number of clashes within the asymmetric unit, whereas Symm-Clashes lists symmetry-related clashes.

Mol	Chain	Non-H	H(model)	H(added)	Clashes	Symm-Clashes
1	A	1822	0	1757	11	0
1	B	1750	0	1671	12	0
2	C	5580	0	5330	43	0
3	D	23	0	21	0	0
3	E	23	0	21	1	0
3	F	23	0	21	2	0
4	C	1	0	0	0	0
5	A	85	0	0	1	0
5	B	43	0	0	0	0
5	C	320	0	0	2	0
All	All	9670	0	8821	65	0

The all-atom clashscore is defined as the number of clashes found per 1000 atoms (including hydrogen atoms). The all-atom clashscore for this structure is 4.

All (65) close contacts within the same asymmetric unit are listed below, sorted by their clash magnitude.

Atom-1	Atom-2	Interatomic distance (Å)	Clash overlap (Å)
2:C:207:GLY:HA3	2:C:248:LEU:HD13	1.78	0.65
1:B:5:ARG:NH2	1:B:42:GLU:OE1	2.32	0.63
2:C:510:ILE:HG12	2:C:518:TYR:HB2	1.83	0.60
2:C:65:VAL:HG11	2:C:70:LYS:HE3	1.84	0.60
2:C:483:PHE:HB3	2:C:487:CYS:HB2	1.84	0.60
2:C:479:THR:OG1	2:C:622:ARG:HD2	2.02	0.59
2:C:234:GLN:HG2	2:C:238:TYR:CE2	2.36	0.59
2:C:395:TYR:OH	2:C:503:GLU:OE2	2.12	0.59
1:B:32:ALA:HB1	1:B:110:LEU:HD21	1.86	0.58
2:C:363:GLU:HG2	2:C:501:LYS:NZ	2.19	0.58
1:B:156:THR:O	1:B:160:ILE:HD12	2.04	0.57
2:C:282:PHE:CE2	2:C:289:LYS:HG2	2.39	0.57
1:A:222:ILE:HG13	2:C:87:THR:HG21	1.87	0.56
2:C:97:PHE:CE1	2:C:144:ILE:HD11	2.43	0.54
1:A:168:THR:HG22	1:A:204:ALA:O	2.08	0.53
2:C:117:LYS:NZ	5:C:904:HOH:O	2.39	0.53
2:C:583:THR:HA	3:F:1:GLC:H61	1.91	0.53
1:A:183:TYR:CE1	1:A:192:LYS:HD2	2.44	0.52
1:A:173:LEU:HD21	1:A:204:ALA:HB2	1.91	0.52
1:B:116:THR:HG22	1:B:118:GLU:N	2.25	0.52
2:C:683:ASP:HB2	2:C:686:ARG:HG3	1.92	0.51
1:A:92:GLU:HA	1:A:95:LEU:HD12	1.93	0.50
2:C:65:VAL:HG13	2:C:69:LYS:HD3	1.93	0.50
2:C:276:LEU:HB3	2:C:333:HIS:ND1	2.26	0.50
1:B:26:GLU:O	1:B:30:THR:HG23	2.12	0.50
1:B:159:GLU:O	1:B:162:THR:HG22	2.11	0.50
1:A:165:LEU:O	1:A:172:ARG:NH1	2.45	0.50
2:C:234:GLN:NE2	2:C:275:ALA:HB1	2.27	0.50
1:B:116:THR:HG22	1:B:118:GLU:H	1.76	0.49
1:B:165:LEU:O	1:B:172:ARG:NH1	2.43	0.49
1:B:227:ARG:HG3	1:B:228:ASP:N	2.28	0.49
1:B:53:VAL:O	1:B:57:ARG:HG2	2.14	0.48
2:C:421:ILE:HG12	2:C:466:PHE:CZ	2.49	0.47
2:C:673:VAL:HG21	2:C:685:HIS:HB2	1.95	0.47
2:C:623:GLN:HG2	2:C:690:GLU:OE1	2.15	0.47
1:A:155:LYS:O	1:A:159:GLU:HG3	2.16	0.46
2:C:315:ALA:O	2:C:319:LEU:HG	2.15	0.46

Continued on next page...

Continued from previous page...

Atom-1	Atom-2	Interatomic distance (Å)	Clash overlap (Å)
2:C:132:LYS:HD2	2:C:143:HIS:CE1	2.51	0.45
1:A:5:ARG:N	5:A:305:HOH:O	2.49	0.45
2:C:203:LEU:HG	2:C:237:PHE:CE1	2.52	0.45
2:C:340:HIS:HA	3:E:1:GLC:H3	1.98	0.44
2:C:56:THR:HG22	2:C:171:PHE:CZ	2.53	0.44
2:C:81:ARG:HH12	2:C:85:ASP:CG	2.21	0.44
2:C:319:LEU:HD11	2:C:367:VAL:HG13	1.99	0.43
2:C:385:LYS:O	2:C:389:GLN:HG3	2.17	0.43
2:C:634:GLN:HG3	2:C:657:TRP:CD2	2.54	0.43
2:C:320:GLU:OE2	2:C:718:LYS:NZ	2.49	0.43
2:C:478:ASP:HA	2:C:479:THR:HA	1.69	0.43
2:C:225:ILE:HD12	2:C:273:LEU:HB3	2.01	0.43
2:C:519:GLU:HA	2:C:525:SER:O	2.19	0.43
2:C:673:VAL:CG1	2:C:693:ASN:ND2	2.82	0.43
1:B:221:LEU:O	1:B:224:GLN:HB3	2.19	0.42
2:C:584:LYS:H	3:F:1:GLC:H61	1.84	0.42
1:A:41:GLU:O	1:A:45:LEU:HG	2.19	0.42
1:B:164:GLU:O	1:B:165:LEU:HD23	2.19	0.42
2:C:452:TYR:OH	2:C:463:ASP:OD1	2.22	0.42
2:C:687:VAL:HB	2:C:693:ASN:ND2	2.34	0.42
2:C:54:ASN:HB3	2:C:55:ARG:H	1.66	0.41
2:C:214:LYS:HB3	2:C:214:LYS:HE3	1.94	0.41
2:C:55:ARG:HA	2:C:55:ARG:HD3	1.87	0.41
2:C:470:ARG:HD2	5:C:1116:HOH:O	2.20	0.41
1:A:24:MET:HG2	1:A:49:ALA:HB2	2.03	0.41
1:A:117:GLY:O	1:A:121:VAL:HG23	2.20	0.41
2:C:313:MET:H	2:C:313:MET:HG2	1.67	0.41
2:C:99:ILE:HB	2:C:170:ILE:HG13	2.03	0.40

There are no symmetry-related clashes.

5.3 Torsion angles [\(i\)](#)

5.3.1 Protein backbone [\(i\)](#)

In the following table, the Percentiles column shows the percent Ramachandran outliers of the chain as a percentile score with respect to all X-ray entries followed by that with respect to entries of similar resolution.

The Analysed column shows the number of residues for which the backbone conformation was analysed, and the total number of residues.

Mol	Chain	Analysed	Favoured	Allowed	Outliers	Percentiles	
1	A	227/240 (95%)	224 (99%)	3 (1%)	0	100	100
1	B	218/240 (91%)	212 (97%)	6 (3%)	0	100	100
2	C	689/756 (91%)	665 (96%)	23 (3%)	1 (0%)	51	64
All	All	1134/1236 (92%)	1101 (97%)	32 (3%)	1 (0%)	51	64

All (1) Ramachandran outliers are listed below:

Mol	Chain	Res	Type
2	C	486	VAL

5.3.2 Protein sidechains [i](#)

In the following table, the Percentiles column shows the percent sidechain outliers of the chain as a percentile score with respect to all X-ray entries followed by that with respect to entries of similar resolution.

The Analysed column shows the number of residues for which the sidechain conformation was analysed, and the total number of residues.

Mol	Chain	Analysed	Rotameric	Outliers	Percentiles	
1	A	195/210 (93%)	193 (99%)	2 (1%)	76	87
1	B	183/210 (87%)	179 (98%)	4 (2%)	52	69
2	C	579/648 (89%)	565 (98%)	14 (2%)	49	66
All	All	957/1068 (90%)	937 (98%)	20 (2%)	53	70

All (20) residues with a non-rotameric sidechain are listed below:

Mol	Chain	Res	Type
1	A	89	SER
1	A	179	PHE
1	B	104	SER
1	B	179	PHE
1	B	199	GLN
1	B	227	ARG
2	C	285	SER
2	C	309	TRP
2	C	313	MET
2	C	328	ARG
2	C	346	ASN
2	C	402	SER

Continued on next page...

Continued from previous page...

Mol	Chain	Res	Type
2	C	413	ARG
2	C	427	SER
2	C	494	ASP
2	C	588	GLN
2	C	675	LYS
2	C	708	TRP
2	C	725	ARG
2	C	744	GLN

Sometimes sidechains can be flipped to improve hydrogen bonding and reduce clashes. There are no such sidechains identified.

5.3.3 RNA [i](#)

There are no RNA molecules in this entry.

5.4 Non-standard residues in protein, DNA, RNA chains [i](#)

7 non-standard protein/DNA/RNA residues are modelled in this entry.

In the following table, the Counts columns list the number of bonds (or angles) for which Mogul statistics could be retrieved, the number of bonds (or angles) that are observed in the model and the number of bonds (or angles) that are defined in the Chemical Component Dictionary. The Link column lists molecule types, if any, to which the group is linked. The Z score for a bond length (or angle) is the number of standard deviations the observed value is removed from the expected value. A bond length (or angle) with $|Z| > 2$ is considered an outlier worth inspection. RMSZ is the root-mean-square of all Z scores of the bond lengths (or angles).

Mol	Type	Chain	Res	Link	Bond lengths			Bond angles		
					Counts	RMSZ	# $ Z > 2$	Counts	RMSZ	# $ Z > 2$
1	CAS	A	194	1	5,8,9	0.94	0	1,9,11	0.79	0
2	SEP	C	60	2	8,9,10	1.61	1 (12%)	8,12,14	1.57	2 (25%)
1	CAS	B	85	1	5,8,9	0.96	0	1,9,11	0.64	0
1	CAS	A	85	1	5,8,9	0.82	0	1,9,11	0.89	0
2	CAS	C	354	2	5,8,9	0.80	0	1,9,11	1.26	0
2	SEP	C	83	2	8,9,10	1.47	1 (12%)	8,12,14	1.39	1 (12%)
1	CAS	B	194	1	5,8,9	0.97	0	1,9,11	1.63	0

In the following table, the Chirals column lists the number of chiral outliers, the number of chiral centers analysed, the number of these observed in the model and the number defined in the Chemical Component Dictionary. Similar counts are reported in the Torsion and Rings columns. '-' means no outliers of that kind were identified.

Mol	Type	Chain	Res	Link	Chirals	Torsions	Rings
1	CAS	A	194	1	-	0/0/7/9	-
2	SEP	C	60	2	-	0/5/8/10	-
1	CAS	B	85	1	-	0/0/7/9	-
1	CAS	A	85	1	-	0/0/7/9	-
2	CAS	C	354	2	-	0/0/7/9	-
2	SEP	C	83	2	-	0/5/8/10	-
1	CAS	B	194	1	-	0/0/7/9	-

All (2) bond length outliers are listed below:

Mol	Chain	Res	Type	Atoms	Z	Observed(Å)	Ideal(Å)
2	C	60	SEP	P-O1P	3.63	1.62	1.50
2	C	83	SEP	P-O1P	3.17	1.60	1.50

All (3) bond angle outliers are listed below:

Mol	Chain	Res	Type	Atoms	Z	Observed(°)	Ideal(°)
2	C	83	SEP	P-OG-CB	-3.18	109.53	118.30
2	C	60	SEP	OG-CB-CA	2.62	110.69	108.14
2	C	60	SEP	O2P-P-OG	2.39	113.09	106.73

There are no chirality outliers.

There are no torsion outliers.

There are no ring outliers.

No monomer is involved in short contacts.

5.5 Carbohydrates [\(i\)](#)

6 monosaccharides are modelled in this entry.

In the following table, the Counts columns list the number of bonds (or angles) for which Mogul statistics could be retrieved, the number of bonds (or angles) that are observed in the model and the number of bonds (or angles) that are defined in the Chemical Component Dictionary. The Link column lists molecule types, if any, to which the group is linked. The Z score for a bond length (or angle) is the number of standard deviations the observed value is removed from the expected value. A bond length (or angle) with $|Z| > 2$ is considered an outlier worth inspection. RMSZ is the root-mean-square of all Z scores of the bond lengths (or angles).

Mol	Type	Chain	Res	Link	Bond lengths			Bond angles		
					Counts	RMSZ	# Z > 2	Counts	RMSZ	# Z > 2
3	GLC	D	1	3	11,11,12	0.58	0	15,15,17	1.99	4 (26%)

Mol	Type	Chain	Res	Link	Bond lengths			Bond angles		
					Counts	RMSZ	# Z > 2	Counts	RMSZ	# Z > 2
3	FRU	D	2	3	11,12,12	0.66	0	10,18,18	0.84	0
3	GLC	E	1	3	11,11,12	0.66	0	15,15,17	1.20	1 (6%)
3	FRU	E	2	3	11,12,12	0.52	0	10,18,18	0.52	0
3	GLC	F	1	3	11,11,12	0.48	0	15,15,17	2.19	4 (26%)
3	FRU	F	2	3	11,12,12	0.66	0	10,18,18	0.85	0

In the following table, the Chirals column lists the number of chiral outliers, the number of chiral centers analysed, the number of these observed in the model and the number defined in the Chemical Component Dictionary. Similar counts are reported in the Torsion and Rings columns. '-' means no outliers of that kind were identified.

Mol	Type	Chain	Res	Link	Chirals	Torsions	Rings
3	GLC	D	1	3	-	2/2/19/22	0/1/1/1
3	FRU	D	2	3	-	3/5/24/24	0/1/1/1
3	GLC	E	1	3	-	0/2/19/22	0/1/1/1
3	FRU	E	2	3	-	3/5/24/24	0/1/1/1
3	GLC	F	1	3	-	2/2/19/22	0/1/1/1
3	FRU	F	2	3	-	0/5/24/24	0/1/1/1

There are no bond length outliers.

All (9) bond angle outliers are listed below:

Mol	Chain	Res	Type	Atoms	Z	Observed(°)	Ideal(°)
3	F	1	GLC	C1-O5-C5	5.85	120.12	112.19
3	D	1	GLC	C1-O5-C5	4.88	118.81	112.19
3	F	1	GLC	C6-C5-C4	-4.17	103.23	113.00
3	D	1	GLC	C6-C5-C4	-3.02	105.94	113.00
3	D	1	GLC	C2-C3-C4	-2.87	105.94	110.89
3	F	1	GLC	C3-C4-C5	2.86	115.33	110.24
3	D	1	GLC	O6-C6-C5	-2.50	102.70	111.29
3	F	1	GLC	O5-C5-C4	2.48	116.86	110.83
3	E	1	GLC	C1-O5-C5	2.33	115.35	112.19

There are no chirality outliers.

All (10) torsion outliers are listed below:

Mol	Chain	Res	Type	Atoms
3	D	2	FRU	O1-C1-C2-C3
3	D	2	FRU	O1-C1-C2-O2
3	D	2	FRU	O1-C1-C2-O5

Continued on next page...

Continued from previous page...

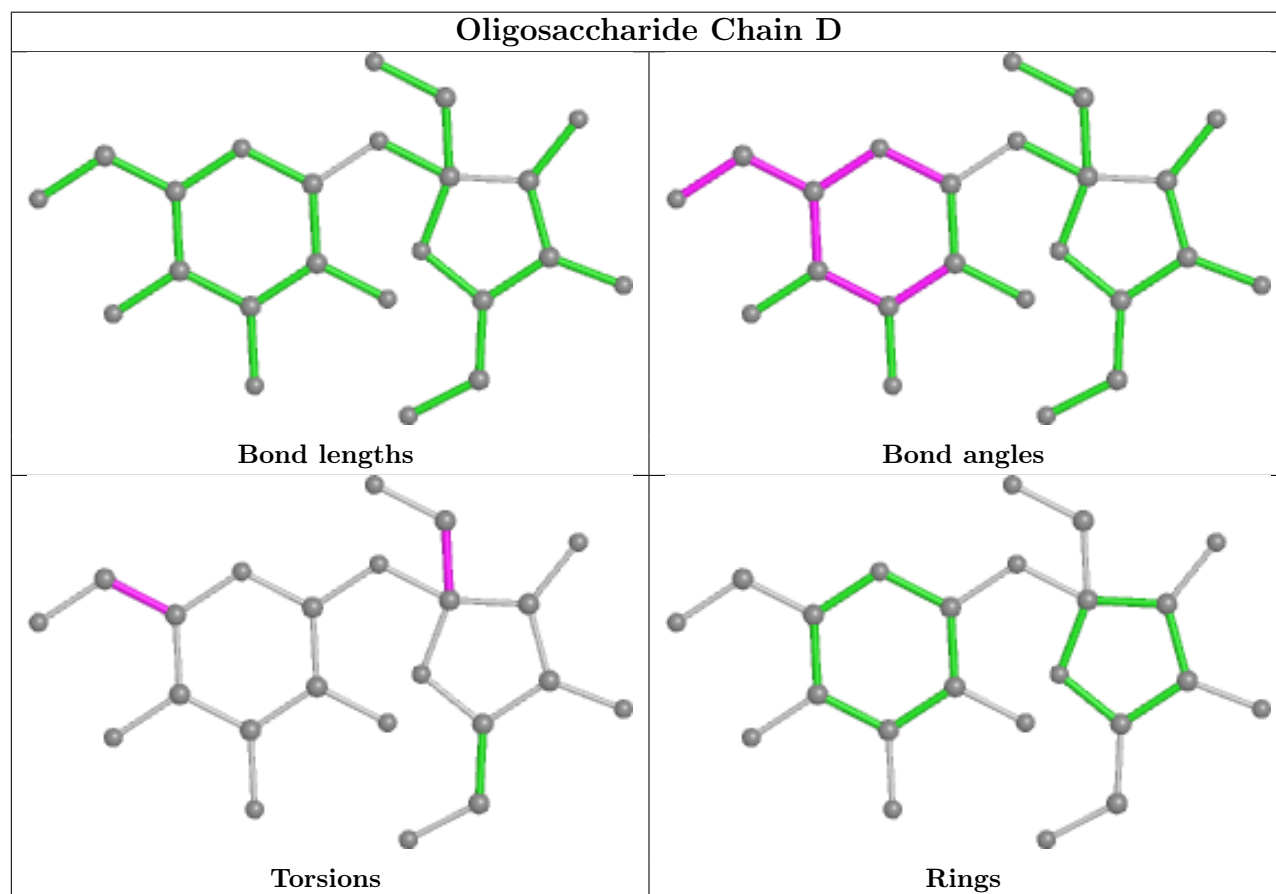
Mol	Chain	Res	Type	Atoms
3	E	2	FRU	O1-C1-C2-C3
3	E	2	FRU	O1-C1-C2-O2
3	D	1	GLC	O5-C5-C6-O6
3	D	1	GLC	C4-C5-C6-O6
3	F	1	GLC	C4-C5-C6-O6
3	E	2	FRU	O1-C1-C2-O5
3	F	1	GLC	O5-C5-C6-O6

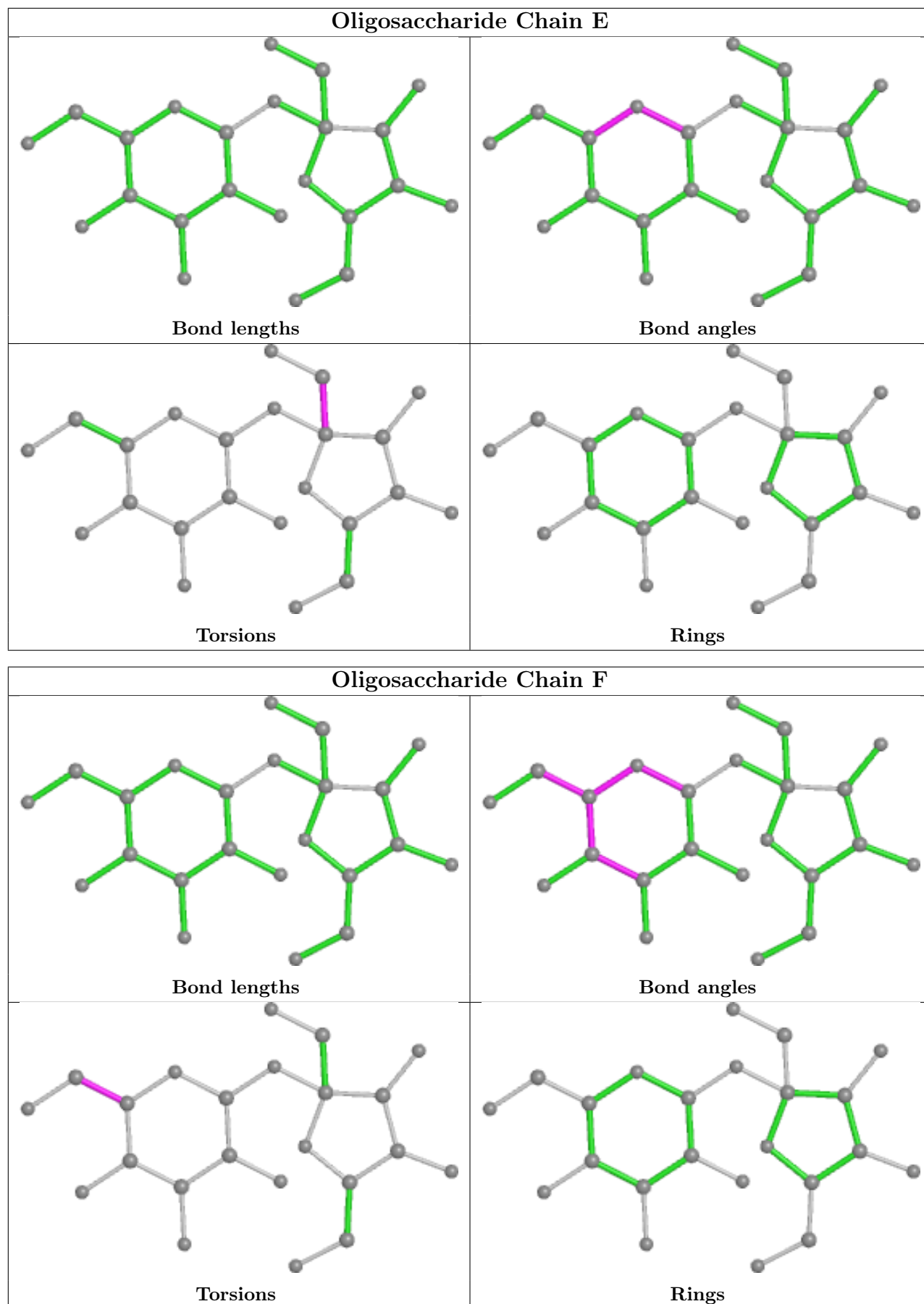
There are no ring outliers.

2 monomers are involved in 3 short contacts:

Mol	Chain	Res	Type	Clashes	Symm-Clashes
3	E	1	GLC	1	0
3	F	1	GLC	2	0

The following is a two-dimensional graphical depiction of Mogul quality analysis of bond lengths, bond angles, torsion angles, and ring geometry for oligosaccharide.





5.6 Ligand geometry

Of 1 ligands modelled in this entry, 1 is monoatomic - leaving 0 for Mogul analysis.

There are no bond length outliers.

There are no bond angle outliers.

There are no chirality outliers.

There are no torsion outliers.

There are no ring outliers.

No monomer is involved in short contacts.

5.7 Other polymers

There are no such residues in this entry.

5.8 Polymer linkage issues

There are no chain breaks in this entry.

6 Fit of model and data

6.1 Protein, DNA and RNA chains

In the following table, the column labelled ‘#RSRZ > 2’ contains the number (and percentage) of RSRZ outliers, followed by percent RSRZ outliers for the chain as percentile scores relative to all X-ray entries and entries of similar resolution. The OWAB column contains the minimum, median, 95th percentile and maximum values of the occupancy-weighted average B-factor per residue. The column labelled ‘Q < 0.9’ lists the number of (and percentage) of residues with an average occupancy less than 0.9.

Mol	Chain	Analysed	<RSRZ>	#RSRZ>2	OWAB(Å ²)	Q<0.9
1	A	229/240 (95%)	-0.08	2 (0%) 84 88	28, 41, 61, 70	0
1	B	222/240 (92%)	0.16	7 (3%) 47 54	30, 47, 66, 74	0
2	C	695/756 (91%)	0.01	12 (1%) 70 76	23, 35, 59, 79	0
All	All	1146/1236 (92%)	0.02	21 (1%) 68 74	23, 38, 64, 79	0

All (21) RSRZ outliers are listed below:

Mol	Chain	Res	Type	RSRZ
2	C	617	ILE	4.0
2	C	448	PHE	3.7
2	C	433	VAL	3.2
2	C	691	TYR	3.1
1	B	141	ASP	2.9
2	C	434	LEU	2.8
1	B	234	THR	2.6
2	C	427	SER	2.6
1	A	109	HIS	2.4
2	C	430	PHE	2.4
1	B	205	ILE	2.3
1	B	116	THR	2.3
2	C	428	ASP	2.3
2	C	449	LYS	2.3
1	B	230	LEU	2.3
2	C	431	ASP	2.3
2	C	432	THR	2.2
1	A	76	LYS	2.2
1	B	159	GLU	2.2
2	C	615	ILE	2.2
1	B	195	HIS	2.1

6.2 Non-standard residues in protein, DNA, RNA chains [i](#)

In the following table, the Atoms column lists the number of modelled atoms in the group and the number defined in the chemical component dictionary. The B-factors column lists the minimum, median, 95th percentile and maximum values of B factors of atoms in the group. The column labelled 'Q< 0.9' lists the number of atoms with occupancy less than 0.9.

Mol	Type	Chain	Res	Atoms	RSCC	RSR	B-factors(Å ²)	Q<0.9
1	CAS	B	194	9/10	0.85	0.23	58,63,87,119	0
1	CAS	A	85	9/10	0.91	0.19	39,47,81,116	0
2	CAS	C	354	9/10	0.91	0.14	33,42,60,87	0
1	CAS	B	85	9/10	0.95	0.10	40,43,63,85	0
1	CAS	A	194	9/10	0.97	0.12	30,32,49,53	0
2	SEP	C	60	10/11	0.98	0.14	34,37,42,42	0
2	SEP	C	83	10/11	0.99	0.14	23,26,31,33	0

6.3 Carbohydrates [i](#)

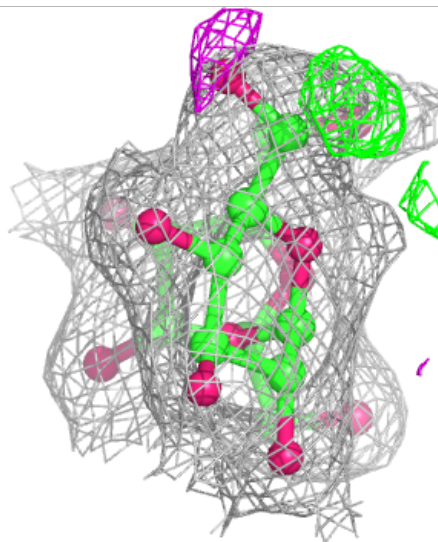
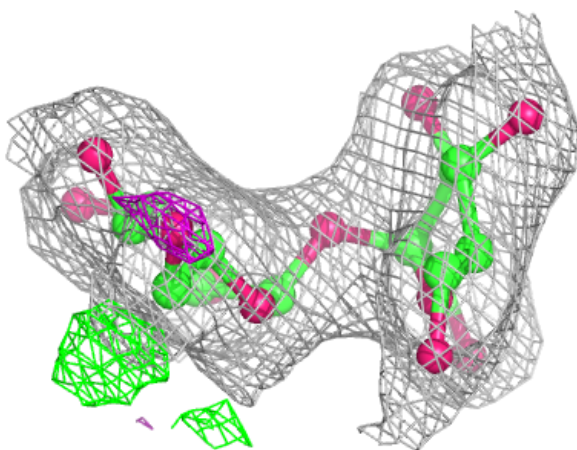
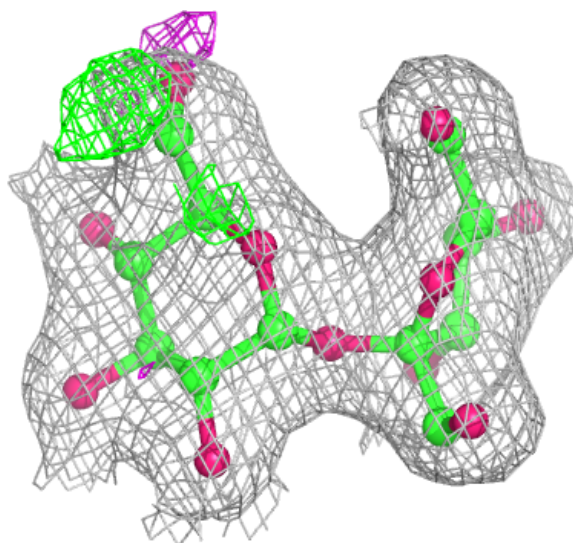
In the following table, the Atoms column lists the number of modelled atoms in the group and the number defined in the chemical component dictionary. The B-factors column lists the minimum, median, 95th percentile and maximum values of B factors of atoms in the group. The column labelled 'Q< 0.9' lists the number of atoms with occupancy less than 0.9.

Mol	Type	Chain	Res	Atoms	RSCC	RSR	B-factors(Å ²)	Q<0.9
3	FRU	F	2	12/12	0.86	0.21	44,55,60,64	0
3	GLC	F	1	11/12	0.93	0.18	44,50,55,58	0
3	FRU	E	2	12/12	0.93	0.12	39,43,46,51	0
3	GLC	E	1	11/12	0.95	0.09	34,39,41,44	0
3	GLC	D	1	11/12	0.96	0.14	26,28,33,38	0
3	FRU	D	2	12/12	0.98	0.10	32,35,39,42	0

The following is a graphical depiction of the model fit to experimental electron density for oligosaccharide. Each fit is shown from different orientation to approximate a three-dimensional view.

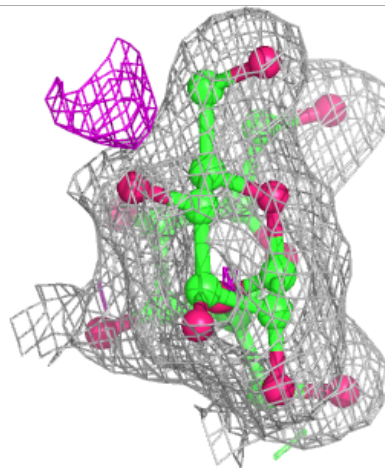
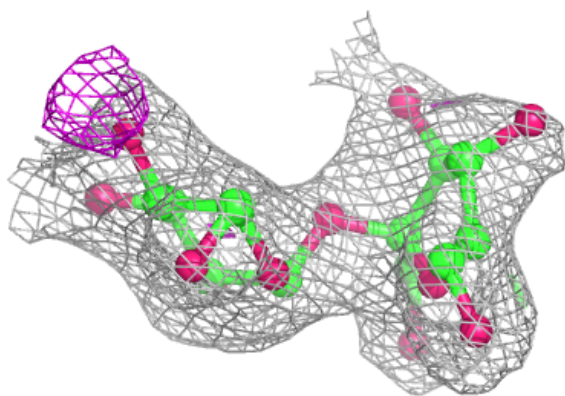
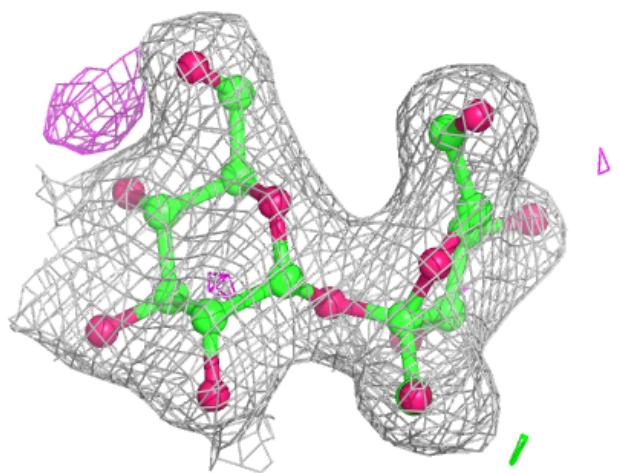
Electron density around Chain D:

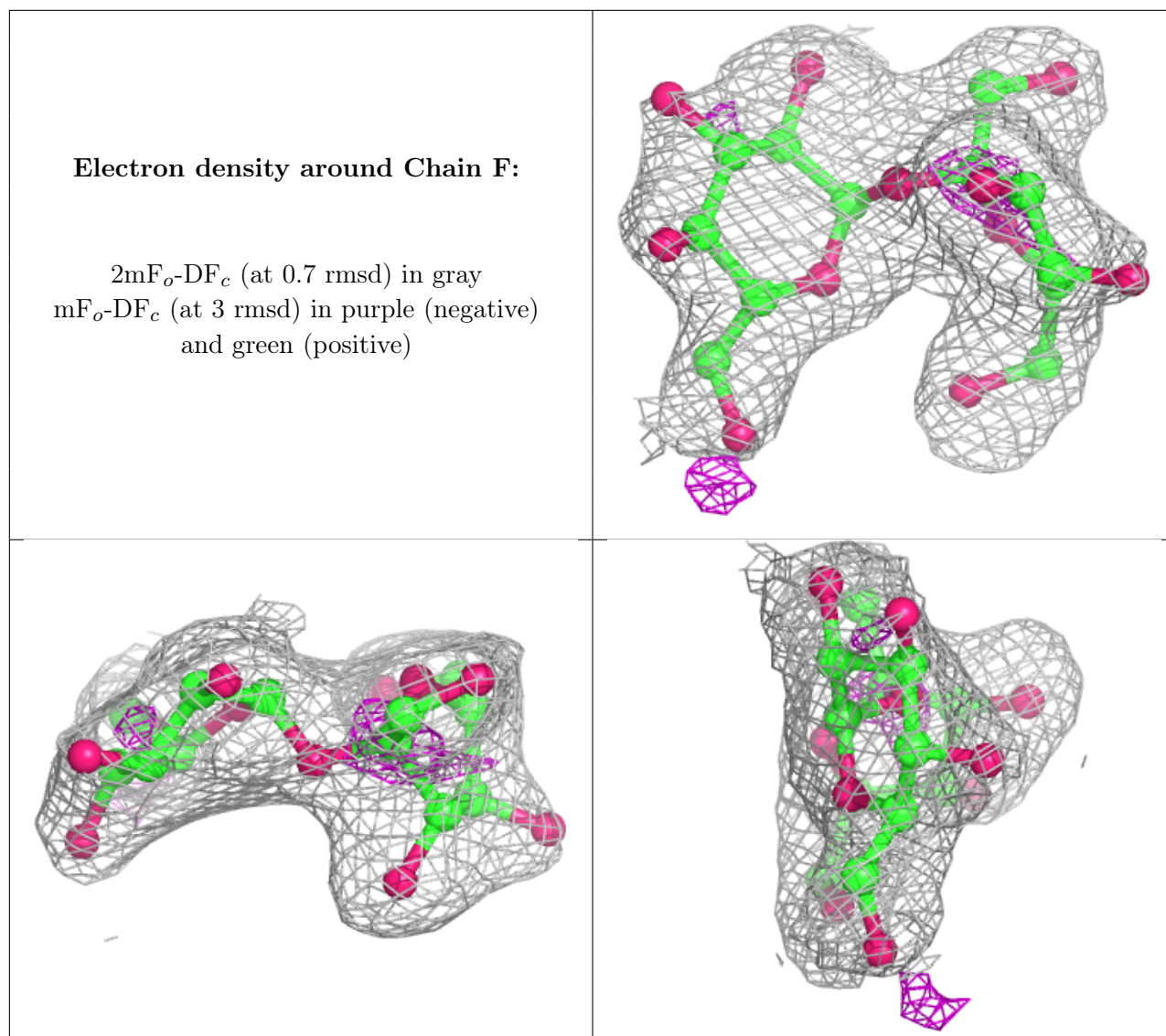
$2mF_o-DF_c$ (at 0.7 rmsd) in gray
 mF_o-DF_c (at 3 rmsd) in purple (negative)
and green (positive)



Electron density around Chain E:

$2mF_o-DF_c$ (at 0.7 rmsd) in gray
 mF_o-DF_c (at 3 rmsd) in purple (negative)
and green (positive)





6.4 Ligands [i](#)

In the following table, the Atoms column lists the number of modelled atoms in the group and the number defined in the chemical component dictionary. The B-factors column lists the minimum, median, 95th percentile and maximum values of B factors of atoms in the group. The column labelled 'Q<0.9' lists the number of atoms with occupancy less than 0.9.

Mol	Type	Chain	Res	Atoms	RSCC	RSR	B-factors(Å ²)	Q<0.9
4	CA	C	801	1/1	0.99	0.11	30,30,30,30	0

6.5 Other polymers [i](#)

There are no such residues in this entry.