



Full wwPDB X-ray Structure Validation Report ⓘ

Oct 11, 2023 – 04:07 AM EDT

PDB ID : 7MWV
Title : Structure of the E. coli PutA proline dehydrogenase domain (residues 86-630) complexed with cyclopropanecarboxylic acid
Authors : Tanner, J.J.; Bogner, A.N.
Deposited on : 2021-05-17
Resolution : 1.69 Å(reported)

This is a Full wwPDB X-ray Structure Validation Report for a publicly released PDB entry.

We welcome your comments at validation@mail.wwpdb.org

A user guide is available at

<https://www.wwpdb.org/validation/2017/XrayValidationReportHelp>

with specific help available everywhere you see the ⓘ symbol.

The types of validation reports are described at

<http://www.wwpdb.org/validation/2017/FAQs#types>.

The following versions of software and data (see [references ⓘ](#)) were used in the production of this report:

MolProbity : 4.02b-467
Mogul : 1.8.5 (274361), CSD as541be (2020)
Xtriage (Phenix) : 1.13
EDS : 2.35.1
buster-report : 1.1.7 (2018)
Percentile statistics : 20191225.v01 (using entries in the PDB archive December 25th 2019)
Refmac : 5.8.0158
CCP4 : 7.0.044 (Gargrove)
Ideal geometry (proteins) : Engh & Huber (2001)
Ideal geometry (DNA, RNA) : Parkinson et al. (1996)
Validation Pipeline (wwPDB-VP) : 2.35.1

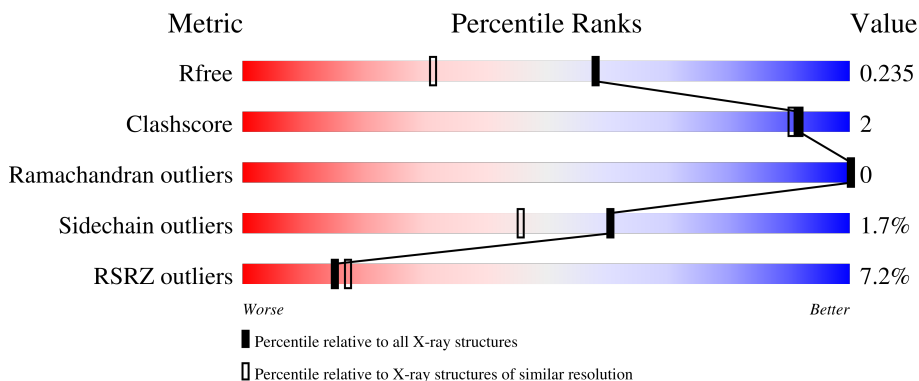
1 Overall quality at a glance

The following experimental techniques were used to determine the structure:

X-RAY DIFFRACTION

The reported resolution of this entry is 1.69 Å.

Percentile scores (ranging between 0-100) for global validation metrics of the entry are shown in the following graphic. The table shows the number of entries on which the scores are based.



Metric	Whole archive (#Entries)	Similar resolution (#Entries, resolution range(Å))
R_{free}	130704	4298 (1.70-1.70)
Clashscore	141614	4695 (1.70-1.70)
Ramachandran outliers	138981	4610 (1.70-1.70)
Sidechain outliers	138945	4610 (1.70-1.70)
RSRZ outliers	127900	4222 (1.70-1.70)

The table below summarises the geometric issues observed across the polymeric chains and their fit to the electron density. The red, orange, yellow and green segments of the lower bar indicate the fraction of residues that contain outliers for ≥ 3 , 2, 1 and 0 types of geometric quality criteria respectively. A grey segment represents the fraction of residues that are not modelled. The numeric value for each fraction is indicated below the corresponding segment, with a dot representing fractions $\leq 5\%$. The upper red bar (where present) indicates the fraction of residues that have poor fit to the electron density. The numeric value is given above the bar.

Mol	Chain	Length	Quality of chain
1	A	551	

2 Entry composition i

There are 6 unique types of molecules in this entry. The entry contains 4067 atoms, of which 0 are hydrogens and 0 are deuteriums.

In the tables below, the ZeroOcc column contains the number of atoms modelled with zero occupancy, the AltConf column contains the number of residues with at least one atom in alternate conformation and the Trace column contains the number of residues modelled with at most 2 atoms.

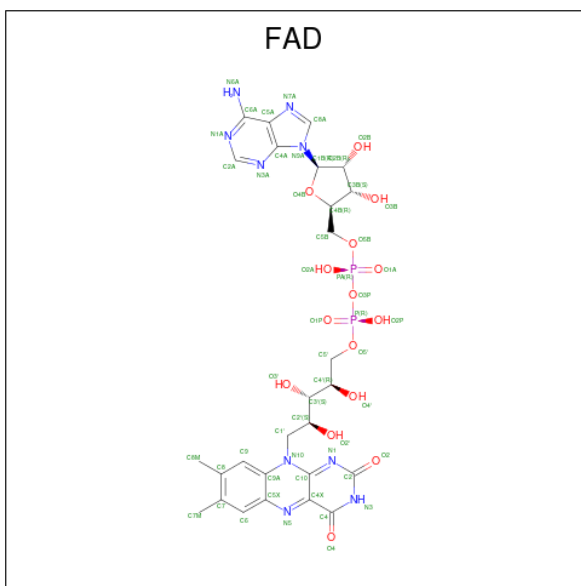
- Molecule 1 is a protein called Bifunctional protein PutA.

Mol	Chain	Residues	Atoms					ZeroOcc	AltConf	Trace
			Total	C	N	O	S			
1	A	499	3732	2367	659	689	17	0	1	0

There are 6 discrepancies between the modelled and reference sequences:

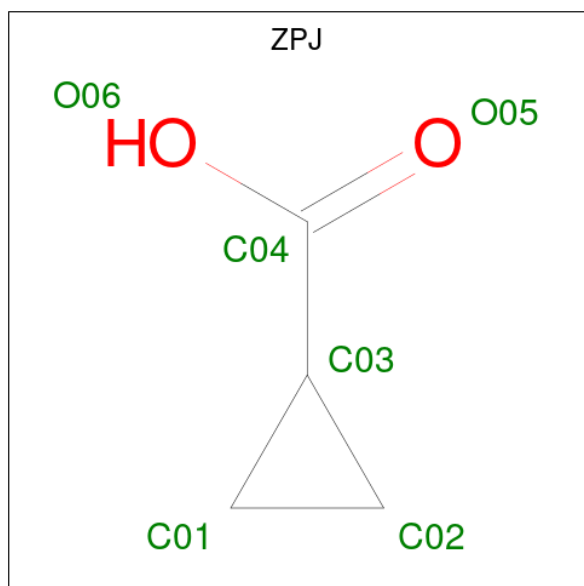
Chain	Residue	Modelled	Actual	Comment	Reference
A	631	HIS	-	expression tag	UNP A0A383H020
A	632	HIS	-	expression tag	UNP A0A383H020
A	633	HIS	-	expression tag	UNP A0A383H020
A	634	HIS	-	expression tag	UNP A0A383H020
A	635	HIS	-	expression tag	UNP A0A383H020
A	636	HIS	-	expression tag	UNP A0A383H020

- Molecule 2 is FLAVIN-ADENINE DINUCLEOTIDE (three-letter code: FAD) (formula: $C_{27}H_{33}N_9O_{15}P_2$) (labeled as "Ligand of Interest" by depositor).



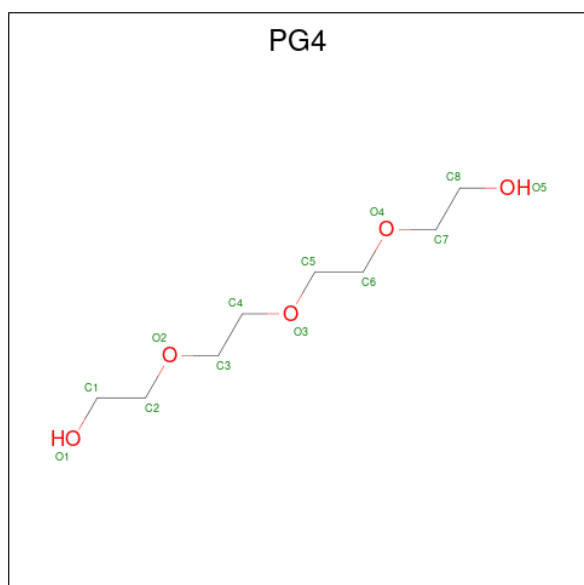
Mol	Chain	Residues	Atoms				ZeroOcc	AltConf	
			Total	C	N	O			P
2	A	1	53	27	9	15	2	0	0

- Molecule 3 is cyclopropanecarboxylic acid (three-letter code: ZPJ) (formula: $C_4H_6O_2$) (labeled as "Ligand of Interest" by depositor).



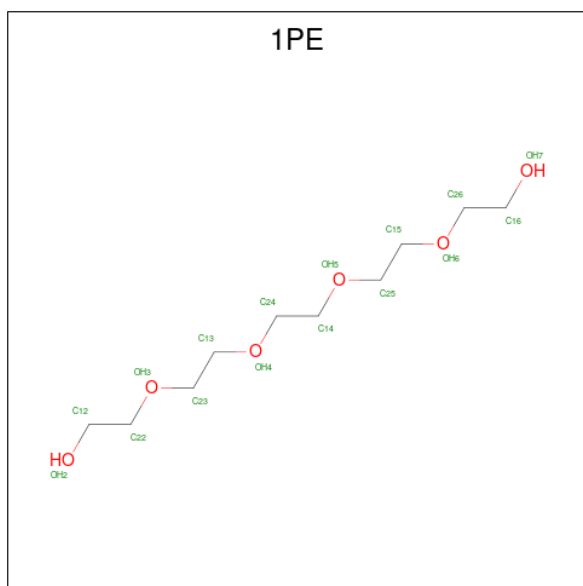
Mol	Chain	Residues	Atoms			ZeroOcc	AltConf
			Total	C	O		
3	A	1	6	4	2	0	0

- Molecule 4 is TETRAETHYLENE GLYCOL (three-letter code: PG4) (formula: $C_8H_{18}O_5$).



Mol	Chain	Residues	Atoms			ZeroOcc	AltConf
4	A	1	Total	C	O	0	0
			13	8	5		

- Molecule 5 is PENTAETHYLENE GLYCOL (three-letter code: 1PE) (formula: $C_{10}H_{22}O_6$).



Mol	Chain	Residues	Atoms			ZeroOcc	AltConf
5	A	1	Total	C	O	0	0
			16	10	6		


- Molecule 6 is water.

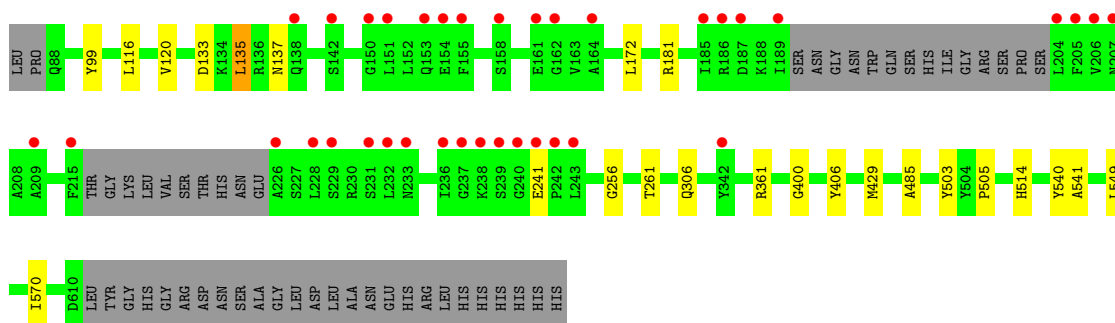
Mol	Chain	Residues	Atoms		ZeroOcc	AltConf
6	A	247	Total	O	0	0
			247	247		

3 Residue-property plots [i](#)

These plots are drawn for all protein, RNA, DNA and oligosaccharide chains in the entry. The first graphic for a chain summarises the proportions of the various outlier classes displayed in the second graphic. The second graphic shows the sequence view annotated by issues in geometry and electron density. Residues are color-coded according to the number of geometric quality criteria for which they contain at least one outlier: green = 0, yellow = 1, orange = 2 and red = 3 or more. A red dot above a residue indicates a poor fit to the electron density ($RSRZ > 2$). Stretches of 2 or more consecutive residues without any outlier are shown as a green connector. Residues present in the sample, but not in the model, are shown in grey.

- Molecule 1: Bifunctional protein PutA

Chain A:  7% 86% 9%



4 Data and refinement statistics i

Property	Value	Source
Space group	I 2 2 2	Depositor
Cell constants a, b, c, α , β , γ	72.99Å 141.74Å 146.30Å 90.00° 90.00° 90.00°	Depositor
Resolution (Å)	73.15 – 1.69 73.15 – 1.69	Depositor EDS
% Data completeness (in resolution range)	99.0 (73.15-1.69) 99.0 (73.15-1.69)	Depositor EDS
R_{merge}	0.12	Depositor
R_{sym}	(Not available)	Depositor
$\langle I/\sigma(I) \rangle$ ¹	1.38 (at 1.69Å)	Xtrriage
Refinement program	PHENIX 1.19.1	Depositor
R, R_{free}	0.213 , 0.240 0.208 , 0.235	Depositor DCC
R_{free} test set	4301 reflections (5.08%)	wwPDB-VP
Wilson B-factor (Å ²)	30.3	Xtrriage
Anisotropy	0.381	Xtrriage
Bulk solvent k_{sol} (e/Å ³), B_{sol} (Å ²)	0.33 , 44.4	EDS
L-test for twinning ²	$\langle L \rangle = 0.49$, $\langle L^2 \rangle = 0.33$	Xtrriage
Estimated twinning fraction	0.002 for -h,-l,-k	Xtrriage
F_o, F_c correlation	0.96	EDS
Total number of atoms	4067	wwPDB-VP
Average B, all atoms (Å ²)	39.0	wwPDB-VP

Xtrriage's analysis on translational NCS is as follows: *The largest off-origin peak in the Patterson function is 4.12% of the height of the origin peak. No significant pseudotranslation is detected.*

¹Intensities estimated from amplitudes.

²Theoretical values of $\langle |L| \rangle$, $\langle L^2 \rangle$ for acentric reflections are 0.5, 0.333 respectively for untwinned datasets, and 0.375, 0.2 for perfectly twinned datasets.

5 Model quality [i](#)

5.1 Standard geometry [i](#)

Bond lengths and bond angles in the following residue types are not validated in this section: 1PE, PG4, FAD, ZPJ

The Z score for a bond length (or angle) is the number of standard deviations the observed value is removed from the expected value. A bond length (or angle) with $|Z| > 5$ is considered an outlier worth inspection. RMSZ is the root-mean-square of all Z scores of the bond lengths (or angles).

Mol	Chain	Bond lengths		Bond angles	
		RMSZ	# Z >5	RMSZ	# Z >5
1	A	0.35	0/3804	0.56	0/5173

There are no bond length outliers.

There are no bond angle outliers.

There are no chirality outliers.

There are no planarity outliers.

5.2 Too-close contacts [i](#)

In the following table, the Non-H and H(model) columns list the number of non-hydrogen atoms and hydrogen atoms in the chain respectively. The H(added) column lists the number of hydrogen atoms added and optimized by MolProbity. The Clashes column lists the number of clashes within the asymmetric unit, whereas Symm-Clashes lists symmetry-related clashes.

Mol	Chain	Non-H	H(model)	H(added)	Clashes	Symm-Clashes
1	A	3732	0	3598	11	0
2	A	53	0	31	2	0
3	A	6	0	0	0	0
4	A	13	0	18	1	0
5	A	16	0	22	0	0
6	A	247	0	0	0	0
All	All	4067	0	3669	12	0

The all-atom clashscore is defined as the number of clashes found per 1000 atoms (including hydrogen atoms). The all-atom clashscore for this structure is 2.

All (12) close contacts within the same asymmetric unit are listed below, sorted by their clash magnitude.

Atom-1	Atom-2	Interatomic distance (Å)	Clash overlap (Å)
1:A:540:TYR:HB2	2:A:2001:FAD:HM72	1.83	0.61
1:A:135:LEU:HD23	1:A:570:ILE:HD13	1.86	0.56
1:A:256:GLY:HA3	1:A:549:LEU:HD21	1.94	0.49
1:A:503:TYR:OH	1:A:505:PRO:HA	2.15	0.46
1:A:261:THR:HG22	1:A:514:HIS:CG	2.51	0.45
4:A:2003:PG4:H51	4:A:2003:PG4:H71	1.57	0.45
1:A:261:THR:HG21	1:A:541:ALA:HB1	1.99	0.45
1:A:133:ASP:OD1	1:A:137:ASN:ND2	2.50	0.45
1:A:400:GLY:HA2	1:A:429:MET:O	2.17	0.44
1:A:172:LEU:O	1:A:181:ARG:HD3	2.18	0.43
1:A:116:LEU:HD23	1:A:120:VAL:HG12	2.02	0.41
1:A:485:ALA:HB1	2:A:2001:FAD:C8	2.51	0.41

There are no symmetry-related clashes.

5.3 Torsion angles [i](#)

5.3.1 Protein backbone [i](#)

In the following table, the Percentiles column shows the percent Ramachandran outliers of the chain as a percentile score with respect to all X-ray entries followed by that with respect to entries of similar resolution.

The Analysed column shows the number of residues for which the backbone conformation was analysed, and the total number of residues.

Mol	Chain	Analysed	Favoured	Allowed	Outliers	Percentiles
1	A	494/551 (90%)	482 (98%)	12 (2%)	0	100 100

There are no Ramachandran outliers to report.

5.3.2 Protein sidechains [i](#)

In the following table, the Percentiles column shows the percent sidechain outliers of the chain as a percentile score with respect to all X-ray entries followed by that with respect to entries of similar resolution.

The Analysed column shows the number of residues for which the sidechain conformation was analysed, and the total number of residues.

Mol	Chain	Analysed	Rotameric	Outliers	Percentiles
1	A	353/450 (78%)	347 (98%)	6 (2%)	60 46

All (6) residues with a non-rotameric sidechain are listed below:

Mol	Chain	Res	Type
1	A	99	TYR
1	A	135	LEU
1	A	241	GLU
1	A	306	GLN
1	A	361	ARG
1	A	406	TYR

Sometimes sidechains can be flipped to improve hydrogen bonding and reduce clashes. There are no such sidechains identified.

5.3.3 RNA [i](#)

There are no RNA molecules in this entry.

5.4 Non-standard residues in protein, DNA, RNA chains [i](#)

There are no non-standard protein/DNA/RNA residues in this entry.

5.5 Carbohydrates [i](#)

There are no monosaccharides in this entry.

5.6 Ligand geometry [i](#)

4 ligands are modelled in this entry.

In the following table, the Counts columns list the number of bonds (or angles) for which Mogul statistics could be retrieved, the number of bonds (or angles) that are observed in the model and the number of bonds (or angles) that are defined in the Chemical Component Dictionary. The Link column lists molecule types, if any, to which the group is linked. The Z score for a bond length (or angle) is the number of standard deviations the observed value is removed from the expected value. A bond length (or angle) with $|Z| > 2$ is considered an outlier worth inspection. RMSZ is the root-mean-square of all Z scores of the bond lengths (or angles).

Mol	Type	Chain	Res	Link	Bond lengths			Bond angles		
					Counts	RMSZ	# Z > 2	Counts	RMSZ	# Z > 2
4	PG4	A	2003	-	12,12,12	0.17	0	11,11,11	0.57	0
3	ZPJ	A	2002	-	6,6,6	0.80	0	8,8,8	2.31	3 (37%)
5	1PE	A	2004	-	15,15,15	0.52	0	14,14,14	0.29	0
2	FAD	A	2001	-	53,58,58	1.92	11 (20%)	68,89,89	1.47	9 (13%)

In the following table, the Chirals column lists the number of chiral outliers, the number of chiral centers analysed, the number of these observed in the model and the number defined in the Chemical Component Dictionary. Similar counts are reported in the Torsion and Rings columns. '-' means no outliers of that kind were identified.

Mol	Type	Chain	Res	Link	Chirals	Torsions	Rings
4	PG4	A	2003	-	-	6/10/10/10	-
3	ZPJ	A	2002	-	-	2/4/6/6	0/1/1/1
5	1PE	A	2004	-	-	5/13/13/13	-
2	FAD	A	2001	-	-	6/30/50/50	0/6/6/6

All (11) bond length outliers are listed below:

Mol	Chain	Res	Type	Atoms	Z	Observed(Å)	Ideal(Å)
2	A	2001	FAD	O4-C4	6.57	1.36	1.23
2	A	2001	FAD	O2-C2	6.20	1.35	1.24
2	A	2001	FAD	C4X-N5	4.48	1.39	1.30
2	A	2001	FAD	C6A-N6A	3.48	1.46	1.34
2	A	2001	FAD	O2'-C2'	-2.62	1.37	1.43
2	A	2001	FAD	C2A-N3A	2.52	1.36	1.32
2	A	2001	FAD	C10-N1	2.48	1.38	1.33
2	A	2001	FAD	C2B-C1B	-2.44	1.50	1.53
2	A	2001	FAD	C2-N1	2.38	1.42	1.36
2	A	2001	FAD	PA-O5B	-2.27	1.50	1.59
2	A	2001	FAD	O4'-C4'	-2.23	1.38	1.43

All (12) bond angle outliers are listed below:

Mol	Chain	Res	Type	Atoms	Z	Observed(°)	Ideal(°)
2	A	2001	FAD	N3A-C2A-N1A	-6.39	118.69	128.68
3	A	2002	ZPJ	C02-C03-C04	-4.07	115.81	118.93
3	A	2002	ZPJ	O05-C04-C03	-3.34	114.75	122.93
2	A	2001	FAD	C4-C4X-N5	3.05	122.57	118.23
2	A	2001	FAD	C9-C9A-N10	-2.85	117.98	121.84
2	A	2001	FAD	C4X-C4-N3	2.72	120.09	113.19
3	A	2002	ZPJ	C01-C03-C04	-2.60	116.93	118.93

Continued on next page...

Continued from previous page...

Mol	Chain	Res	Type	Atoms	Z	Observed(°)	Ideal(°)
2	A	2001	FAD	C4A-C5A-N7A	-2.57	106.72	109.40
2	A	2001	FAD	C4-N3-C2	-2.45	121.11	125.64
2	A	2001	FAD	C2A-N1A-C6A	2.34	122.76	118.75
2	A	2001	FAD	C5X-C9A-N10	2.20	120.23	117.95
2	A	2001	FAD	O4-C4-C4X	-2.18	120.81	126.60

There are no chirality outliers.

All (19) torsion outliers are listed below:

Mol	Chain	Res	Type	Atoms
2	A	2001	FAD	N10-C1'-C2'-O2'
2	A	2001	FAD	N10-C1'-C2'-C3'
2	A	2001	FAD	C1'-C2'-C3'-C4'
3	A	2002	ZPJ	C02-C03-C04-O05
3	A	2002	ZPJ	C02-C03-C04-O06
4	A	2003	PG4	C5-C6-O4-C7
4	A	2003	PG4	O2-C3-C4-O3
5	A	2004	1PE	OH5-C14-C24-OH4
5	A	2004	1PE	OH4-C13-C23-OH3
4	A	2003	PG4	O3-C5-C6-O4
4	A	2003	PG4	O4-C7-C8-O5
5	A	2004	1PE	OH6-C15-C25-OH5
2	A	2001	FAD	PA-O3P-P-O1P
4	A	2003	PG4	C3-C4-O3-C5
5	A	2004	1PE	C24-C14-OH5-C25
4	A	2003	PG4	C8-C7-O4-C6
5	A	2004	1PE	C23-C13-OH4-C24
2	A	2001	FAD	PA-O3P-P-O2P
2	A	2001	FAD	O2'-C2'-C3'-C4'

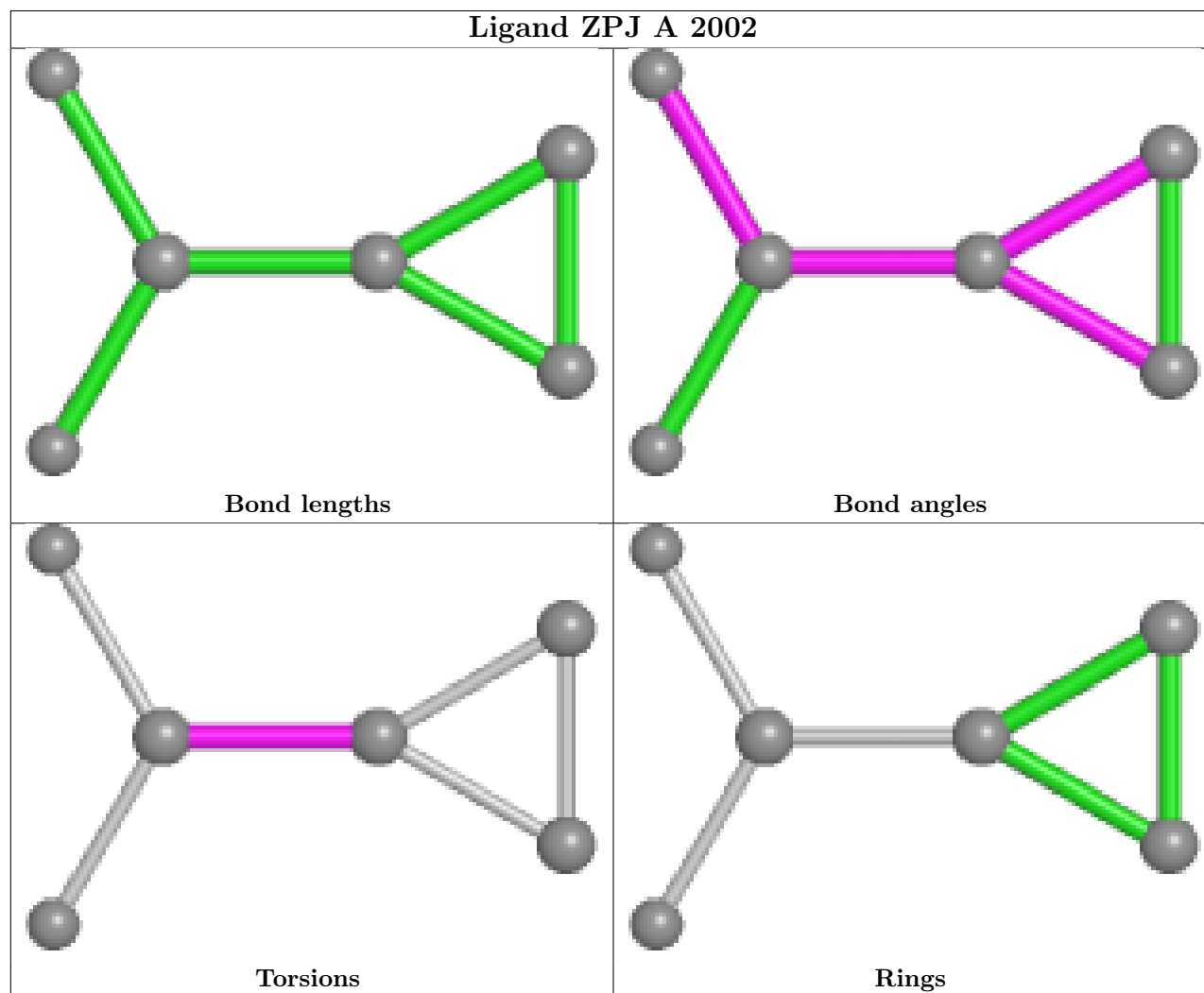
There are no ring outliers.

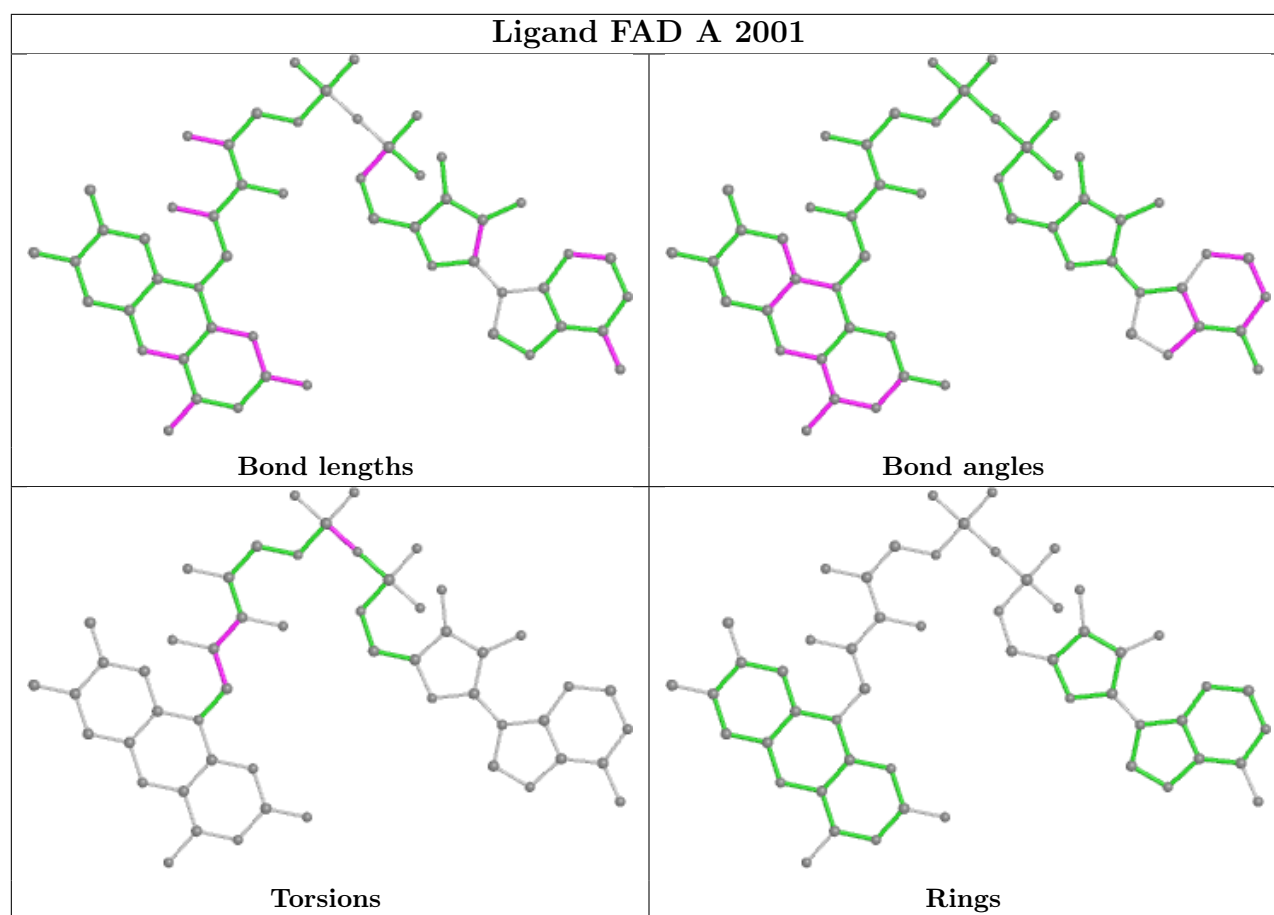
2 monomers are involved in 3 short contacts:

Mol	Chain	Res	Type	Clashes	Symm-Clashes
4	A	2003	PG4	1	0
2	A	2001	FAD	2	0

The following is a two-dimensional graphical depiction of Mogul quality analysis of bond lengths, bond angles, torsion angles, and ring geometry for all instances of the Ligand of Interest. In addition, ligands with molecular weight > 250 and outliers as shown on the validation Tables will also be included. For torsion angles, if less than 5% of the Mogul distribution of torsion angles is within 10 degrees of the torsion angle in question, then that torsion angle is considered an outlier.

Any bond that is central to one or more torsion angles identified as an outlier by Mogul will be highlighted in the graph. For rings, the root-mean-square deviation (RMSD) between the ring in question and similar rings identified by Mogul is calculated over all ring torsion angles. If the average RMSD is greater than 60 degrees and the minimal RMSD between the ring in question and any Mogul-identified rings is also greater than 60 degrees, then that ring is considered an outlier. The outliers are highlighted in purple. The color gray indicates Mogul did not find sufficient equivalents in the CSD to analyse the geometry.





5.7 Other polymers [i](#)

There are no such residues in this entry.

5.8 Polymer linkage issues [i](#)

There are no chain breaks in this entry.

6 Fit of model and data

6.1 Protein, DNA and RNA chains

In the following table, the column labelled ‘#RSRZ > 2’ contains the number (and percentage) of RSRZ outliers, followed by percent RSRZ outliers for the chain as percentile scores relative to all X-ray entries and entries of similar resolution. The OWAB column contains the minimum, median, 95th percentile and maximum values of the occupancy-weighted average B-factor per residue. The column labelled ‘Q < 0.9’ lists the number of (and percentage) of residues with an average occupancy less than 0.9.

Mol	Chain	Analysed	<RSRZ>	#RSRZ>2	OWAB(Å ²)	Q<0.9
1	A	499/551 (90%)	0.31	36 (7%) 15 17	22, 36, 81, 93	0

All (36) RSRZ outliers are listed below:

Mol	Chain	Res	Type	RSRZ
1	A	215	PHE	6.5
1	A	204	LEU	5.8
1	A	205	PHE	5.8
1	A	240	GLY	5.6
1	A	237	GLY	5.6
1	A	228	LEU	5.5
1	A	151	LEU	5.4
1	A	243	LEU	4.6
1	A	155	PHE	4.5
1	A	236	ILE	4.2
1	A	209	ALA	4.2
1	A	232	LEU	4.1
1	A	226	ALA	4.0
1	A	242	PRO	3.9
1	A	162	GLY	3.8
1	A	229	SER	3.8
1	A	154	GLU	3.5
1	A	161	GLU	3.5
1	A	187	ASP	3.3
1	A	231	SER	3.0
1	A	153	GLN	2.9
1	A	185	ILE	2.9
1	A	241	GLU	2.8
1	A	142	SER	2.8
1	A	189	ILE	2.8
1	A	158	SER	2.7
1	A	186	ARG	2.6

Continued on next page...

Continued from previous page...

Mol	Chain	Res	Type	RSRZ
1	A	164	ALA	2.6
1	A	239	SER	2.5
1	A	238	LYS	2.5
1	A	342	TYR	2.4
1	A	233	ASN	2.3
1	A	206	VAL	2.2
1	A	150	GLY	2.2
1	A	207	ASN	2.1
1	A	138	GLN	2.1

6.2 Non-standard residues in protein, DNA, RNA chains [i](#)

There are no non-standard protein/DNA/RNA residues in this entry.

6.3 Carbohydrates [i](#)

There are no monosaccharides in this entry.

6.4 Ligands [i](#)

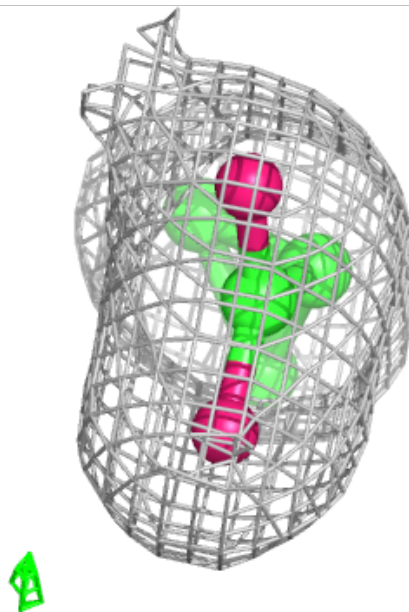
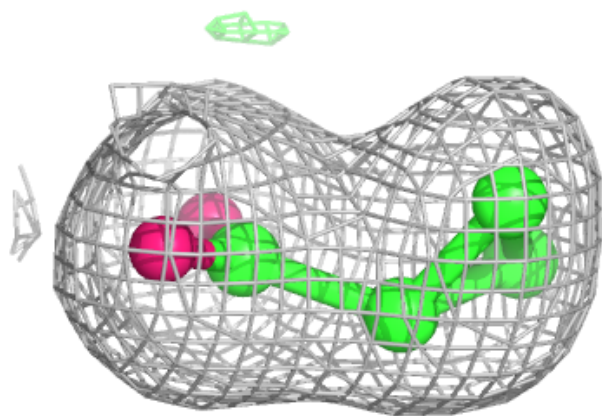
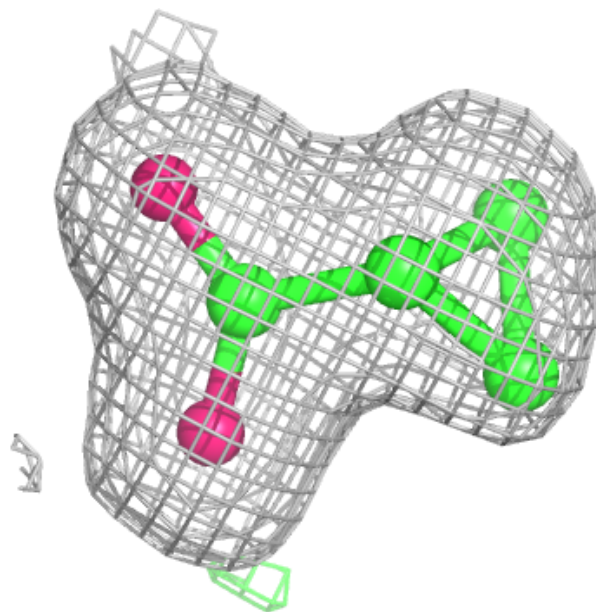
In the following table, the Atoms column lists the number of modelled atoms in the group and the number defined in the chemical component dictionary. The B-factors column lists the minimum, median, 95th percentile and maximum values of B factors of atoms in the group. The column labelled 'Q< 0.9' lists the number of atoms with occupancy less than 0.9.

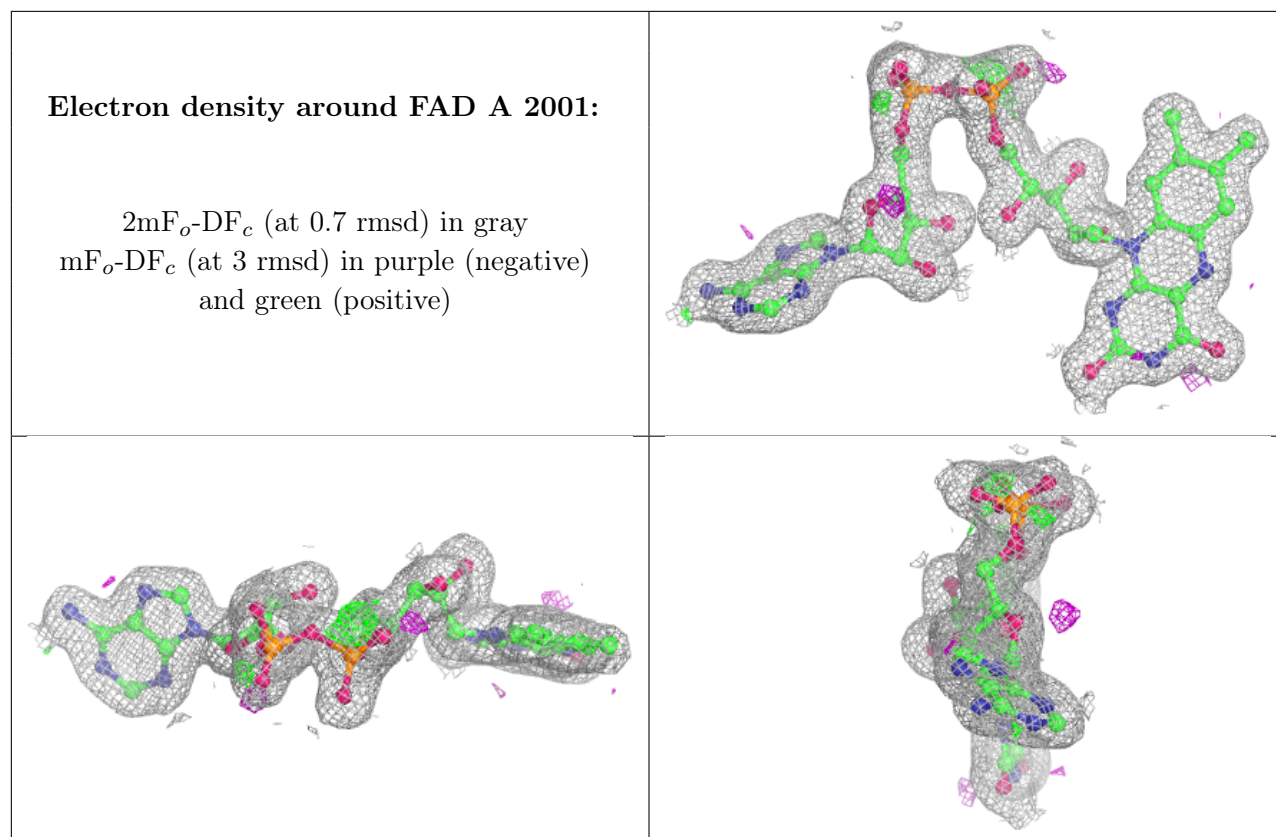
Mol	Type	Chain	Res	Atoms	RSCC	RSR	B-factors(\AA^2)	Q<0.9
4	PG4	A	2003	13/13	0.83	0.16	40,43,49,50	0
5	1PE	A	2004	16/16	0.85	0.14	47,54,57,58	0
3	ZPJ	A	2002	6/6	0.96	0.10	29,30,33,33	0
2	FAD	A	2001	53/53	0.97	0.09	21,23,25,27	0

The following is a graphical depiction of the model fit to experimental electron density of all instances of the Ligand of Interest. In addition, ligands with molecular weight > 250 and outliers as shown on the geometry validation Tables will also be included. Each fit is shown from different orientation to approximate a three-dimensional view.

Electron density around ZPJ A 2002:

$2mF_o-DF_c$ (at 0.7 rmsd) in gray
 mF_o-DF_c (at 3 rmsd) in purple (negative)
and green (positive)





6.5 Other polymers [i](#)

There are no such residues in this entry.