



Full wwPDB X-ray Structure Validation Report ⓘ

Mar 3, 2024 – 06:44 PM EST

PDB ID : 6MSC
Title : Novel, potent, selective and brain penetrant phosphodiesterase 10A inhibitors
Authors : Jakob, C.G.
Deposited on : 2018-10-16
Resolution : 2.36 Å(reported)

This is a Full wwPDB X-ray Structure Validation Report for a publicly released PDB entry.

We welcome your comments at validation@mail.wwpdb.org

A user guide is available at

<https://www.wwpdb.org/validation/2017/XrayValidationReportHelp>

with specific help available everywhere you see the ⓘ symbol.

The types of validation reports are described at

<http://www.wwpdb.org/validation/2017/FAQs#types>.

The following versions of software and data (see [references ⓘ](#)) were used in the production of this report:

MolProbity : 4.02b-467
Mogul : 1.8.5 (274361), CSD as541be (2020)
Xtriage (Phenix) : 1.13
EDS : 2.36
buster-report : 1.1.7 (2018)
Percentile statistics : 20191225.v01 (using entries in the PDB archive December 25th 2019)
Refmac : 5.8.0158
CCP4 : 7.0.044 (Gargrove)
Ideal geometry (proteins) : Engh & Huber (2001)
Ideal geometry (DNA, RNA) : Parkinson et al. (1996)
Validation Pipeline (wwPDB-VP) : 2.36

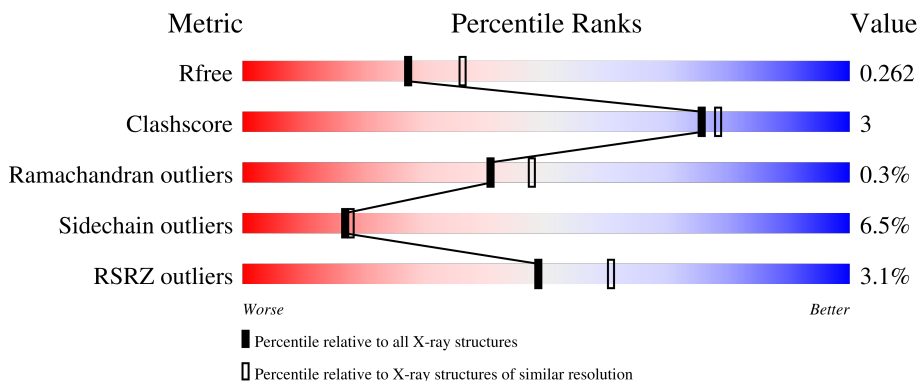
1 Overall quality at a glance

The following experimental techniques were used to determine the structure:

X-RAY DIFFRACTION

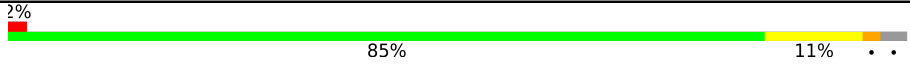
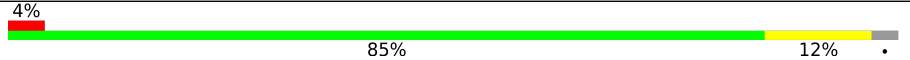
The reported resolution of this entry is 2.36 Å.

Percentile scores (ranging between 0-100) for global validation metrics of the entry are shown in the following graphic. The table shows the number of entries on which the scores are based.



Metric	Whole archive (#Entries)	Similar resolution (#Entries, resolution range(Å))
R_{free}	130704	1164 (2.36-2.36)
Clashscore	141614	1232 (2.36-2.36)
Ramachandran outliers	138981	1211 (2.36-2.36)
Sidechain outliers	138945	1212 (2.36-2.36)
RSRZ outliers	127900	1150 (2.36-2.36)

The table below summarises the geometric issues observed across the polymeric chains and their fit to the electron density. The red, orange, yellow and green segments of the lower bar indicate the fraction of residues that contain outliers for ≥ 3 , 2, 1 and 0 types of geometric quality criteria respectively. A grey segment represents the fraction of residues that are not modelled. The numeric value for each fraction is indicated below the corresponding segment, with a dot representing fractions $\leq 5\%$. The upper red bar (where present) indicates the fraction of residues that have poor fit to the electron density. The numeric value is given above the bar.

Mol	Chain	Length	Quality of chain
1	A	332	 2% 85% 11% . .
1	B	332	 4% 85% 12% .

2 Entry composition i

There are 5 unique types of molecules in this entry. The entry contains 5360 atoms, of which 0 are hydrogens and 0 are deuteriums.

In the tables below, the ZeroOcc column contains the number of atoms modelled with zero occupancy, the AltConf column contains the number of residues with at least one atom in alternate conformation and the Trace column contains the number of residues modelled with at most 2 atoms.

- Molecule 1 is a protein called cAMP and cAMP-inhibited cGMP 3',5'-cyclic phosphodiesterase 10A.

Mol	Chain	Residues	Atoms					ZeroOcc	AltConf	Trace
			Total	C	N	O	S			
1	A	322	2610	1667	443	475	25	0	0	0
1	B	323	2620	1673	446	476	25	0	0	0

There are 8 discrepancies between the modelled and reference sequences:

Chain	Residue	Modelled	Actual	Comment	Reference
A	445	GLY	-	expression tag	UNP Q9Y233
A	446	SER	-	expression tag	UNP Q9Y233
A	447	HIS	-	expression tag	UNP Q9Y233
A	448	MET	-	expression tag	UNP Q9Y233
B	445	GLY	-	expression tag	UNP Q9Y233
B	446	SER	-	expression tag	UNP Q9Y233
B	447	HIS	-	expression tag	UNP Q9Y233
B	448	MET	-	expression tag	UNP Q9Y233

- Molecule 2 is ZINC ION (three-letter code: ZN) (formula: Zn).

Mol	Chain	Residues	Atoms		ZeroOcc	AltConf
2	A	1	Total	Zn	0	0
			1	1		
2	B	1	Total	Zn	0	0
			1	1		

- Molecule 3 is MAGNESIUM ION (three-letter code: MG) (formula: Mg).

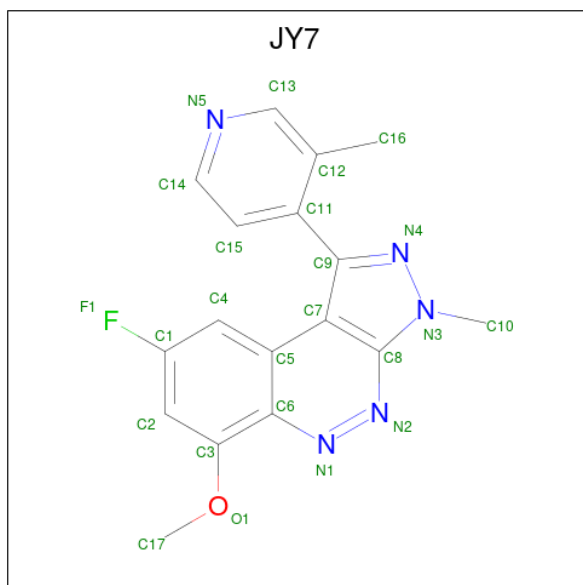
Mol	Chain	Residues	Atoms		ZeroOcc	AltConf
3	A	1	Total	Mg	0	0
			1	1		

Continued on next page...

Continued from previous page...

Mol	Chain	Residues	Atoms		ZeroOcc	AltConf
3	B	1	Total	Mg	0	0
			1	1		

- Molecule 4 is 8-fluoro-6-methoxy-3-methyl-1-(3-methylpyridin-4-yl)-3H-pyrazolo[3,4-c]cinoline (three-letter code: JY7) (formula: C₁₇H₁₄FN₅O) (labeled as "Ligand of Interest" by depositor).



Mol	Chain	Residues	Atoms					ZeroOcc	AltConf
4	A	1	Total	C	F	N	O	0	0
			24	17	1	5	1		
4	B	1	Total	C	F	N	O	0	0
			24	17	1	5	1		

- Molecule 5 is water.

Mol	Chain	Residues	Atoms		ZeroOcc	AltConf
5	A	51	Total	O	0	0
			51	51		
5	B	27	Total	O	0	0
			27	27		

4 Data and refinement statistics

Property	Value	Source
Space group	P 21 21 21	Depositor
Cell constants a, b, c, α , β , γ	50.53Å 81.81Å 159.40Å 90.00° 90.00° 90.00°	Depositor
Resolution (Å)	72.78 – 2.36 79.70 – 2.36	Depositor EDS
% Data completeness (in resolution range)	99.7 (72.78-2.36) 99.7 (79.70-2.36)	Depositor EDS
R_{merge}	0.07	Depositor
R_{sym}	(Not available)	Depositor
$\langle I/\sigma(I) \rangle$ ¹	2.42 (at 2.37Å)	Xtrriage
Refinement program	BUSTER 2.11.7	Depositor
R, R_{free}	0.206 , 0.242 0.217 , 0.262	Depositor DCC
R_{free} test set	1354 reflections (4.87%)	wwPDB-VP
Wilson B-factor (Å ²)	54.0	Xtrriage
Anisotropy	0.826	Xtrriage
Bulk solvent k_{sol} (e/Å ³), B_{sol} (Å ²)	0.32 , 57.9	EDS
L-test for twinning ²	$\langle L \rangle = 0.50$, $\langle L^2 \rangle = 0.33$	Xtrriage
Estimated twinning fraction	No twinning to report.	Xtrriage
F_o, F_c correlation	0.95	EDS
Total number of atoms	5360	wwPDB-VP
Average B, all atoms (Å ²)	75.0	wwPDB-VP

Xtrriage's analysis on translational NCS is as follows: *The largest off-origin peak in the Patterson function is 5.00% of the height of the origin peak. No significant pseudotranslation is detected.*

¹Intensities estimated from amplitudes.

²Theoretical values of $\langle |L| \rangle$, $\langle L^2 \rangle$ for acentric reflections are 0.5, 0.333 respectively for untwinned datasets, and 0.375, 0.2 for perfectly twinned datasets.

5 Model quality

5.1 Standard geometry

Bond lengths and bond angles in the following residue types are not validated in this section: MG, ZN, JY7

The Z score for a bond length (or angle) is the number of standard deviations the observed value is removed from the expected value. A bond length (or angle) with $|Z| > 5$ is considered an outlier worth inspection. RMSZ is the root-mean-square of all Z scores of the bond lengths (or angles).

Mol	Chain	Bond lengths		Bond angles	
		RMSZ	# Z >5	RMSZ	# Z >5
1	A	0.50	0/2674	0.66	0/3620
1	B	0.50	0/2685	0.63	0/3635
All	All	0.50	0/5359	0.65	0/7255

There are no bond length outliers.

There are no bond angle outliers.

There are no chirality outliers.

There are no planarity outliers.

5.2 Too-close contacts

In the following table, the Non-H and H(model) columns list the number of non-hydrogen atoms and hydrogen atoms in the chain respectively. The H(added) column lists the number of hydrogen atoms added and optimized by MolProbity. The Clashes column lists the number of clashes within the asymmetric unit, whereas Symm-Clashes lists symmetry-related clashes.

Mol	Chain	Non-H	H(model)	H(added)	Clashes	Symm-Clashes
1	A	2610	0	2575	20	0
1	B	2620	0	2582	14	0
2	A	1	0	0	0	0
2	B	1	0	0	0	0
3	A	1	0	0	0	0
3	B	1	0	0	0	0
4	A	24	0	0	0	0
4	B	24	0	0	0	0
5	A	51	0	0	0	0
5	B	27	0	0	0	0
All	All	5360	0	5157	32	0

The all-atom clashscore is defined as the number of clashes found per 1000 atoms (including hydrogen atoms). The all-atom clashscore for this structure is 3.

All (32) close contacts within the same asymmetric unit are listed below, sorted by their clash magnitude.

Atom-1	Atom-2	Interatomic distance (Å)	Clash overlap (Å)
1:A:605:LEU:HB3	1:A:608:HIS:HD2	1.41	0.86
1:A:484:ASN:ND2	1:B:756:ARG:HH22	1.80	0.80
1:B:563:HIS:HD2	1:B:633:THR:HG21	1.51	0.74
1:A:756:ARG:HH21	1:A:756:ARG:HG2	1.53	0.72
1:A:756:ARG:HH21	1:A:756:ARG:CG	2.03	0.71
1:A:605:LEU:HB3	1:A:608:HIS:CD2	2.24	0.69
1:A:484:ASN:HD21	1:B:756:ARG:HH22	1.46	0.61
1:B:677:SER:HB2	1:B:688:THR:HG21	1.84	0.59
1:B:450:ILE:HG22	1:B:605:LEU:HD13	1.87	0.57
1:A:465:PRO:HD2	1:A:468:LEU:HD12	1.87	0.56
1:A:460:MET:HG2	1:A:505:LEU:CD2	2.36	0.55
1:B:563:HIS:CD2	1:B:633:THR:HG21	2.39	0.55
1:A:472:ILE:HD11	1:A:489:ILE:HG23	1.88	0.54
1:A:677:SER:HB2	1:A:688:THR:HG21	1.89	0.54
1:A:565:LEU:HD21	1:A:602:ILE:HD12	1.90	0.53
1:B:448:MET:HG2	1:B:601:SER:HB3	1.91	0.52
1:B:472:ILE:HD11	1:B:489:ILE:HG23	1.92	0.51
1:A:448:MET:HG3	1:A:449:SER:H	1.76	0.50
1:A:756:ARG:CG	1:A:756:ARG:NH2	2.73	0.49
1:B:716:ARG:O	1:B:719:LYS:HG3	2.16	0.46
1:A:460:MET:HG2	1:A:505:LEU:HD23	1.99	0.45
1:A:645:LEU:HD11	1:A:664:ARG:HB3	1.97	0.45
1:B:483:GLU:HA	1:B:486:TRP:CE2	2.51	0.44
1:B:648:MET:HB3	1:B:654:LEU:HB2	2.00	0.43
1:A:483:GLU:HA	1:A:486:TRP:CE2	2.54	0.42
1:A:676:CYS:O	1:A:679:THR:HB	2.19	0.42
1:B:453:SER:HA	1:B:456:TRP:NE1	2.34	0.42
1:A:525:HIS:HD2	1:A:564:ASP:OD2	2.02	0.41
1:B:676:CYS:O	1:B:679:THR:HB	2.21	0.41
1:B:562:CYS:O	1:B:565:LEU:HB2	2.20	0.41
1:A:547:LEU:HD12	1:A:547:LEU:HA	1.86	0.41
1:A:562:CYS:O	1:A:565:LEU:HB2	2.21	0.41

There are no symmetry-related clashes.

5.3 Torsion angles [i](#)

5.3.1 Protein backbone [i](#)

In the following table, the Percentiles column shows the percent Ramachandran outliers of the chain as a percentile score with respect to all X-ray entries followed by that with respect to entries of similar resolution.

The Analysed column shows the number of residues for which the backbone conformation was analysed, and the total number of residues.

Mol	Chain	Analysed	Favoured	Allowed	Outliers	Percentiles	
1	A	320/332 (96%)	304 (95%)	15 (5%)	1 (0%)	41	47
1	B	321/332 (97%)	305 (95%)	15 (5%)	1 (0%)	41	47
All	All	641/664 (96%)	609 (95%)	30 (5%)	2 (0%)	41	47

All (2) Ramachandran outliers are listed below:

Mol	Chain	Res	Type
1	B	609	ASN
1	A	609	ASN

5.3.2 Protein sidechains [i](#)

In the following table, the Percentiles column shows the percent sidechain outliers of the chain as a percentile score with respect to all X-ray entries followed by that with respect to entries of similar resolution.

The Analysed column shows the number of residues for which the sidechain conformation was analysed, and the total number of residues.

Mol	Chain	Analysed	Rotameric	Outliers	Percentiles	
1	A	291/299 (97%)	271 (93%)	20 (7%)	15	15
1	B	292/299 (98%)	274 (94%)	18 (6%)	18	19
All	All	583/598 (98%)	545 (94%)	38 (6%)	17	18

All (38) residues with a non-rotameric sidechain are listed below:

Mol	Chain	Res	Type
1	A	464	LEU
1	A	467	ARG
1	A	500	THR
1	A	505	LEU

Continued on next page...

Continued from previous page...

Mol	Chain	Res	Type
1	A	513	MET
1	A	547	LEU
1	A	557	LEU
1	A	558	ILE
1	A	577	LYS
1	A	585	LEU
1	A	593	GLN
1	A	609	ASN
1	A	616	SER
1	A	623	LEU
1	A	645	LEU
1	A	646	GLU
1	A	650	GLN
1	A	679	THR
1	A	748	THR
1	A	756	ARG
1	B	464	LEU
1	B	500	THR
1	B	513	MET
1	B	550	ASP
1	B	557	LEU
1	B	558	ILE
1	B	585	LEU
1	B	587	SER
1	B	588	THR
1	B	593	GLN
1	B	606	GLU
1	B	613	THR
1	B	616	SER
1	B	625	ILE
1	B	650	GLN
1	B	679	THR
1	B	721	GLU
1	B	724	GLN

Sometimes sidechains can be flipped to improve hydrogen bonding and reduce clashes. All (14) such sidechains are listed below:

Mol	Chain	Res	Type
1	A	461	GLN
1	A	476	HIS
1	A	484	ASN
1	A	594	HIS

Continued on next page...

Continued from previous page...

Mol	Chain	Res	Type
1	A	598	GLN
1	A	608	HIS
1	A	644	GLN
1	A	758	ASN
1	B	476	HIS
1	B	598	GLN
1	B	608	HIS
1	B	644	GLN
1	B	758	ASN
1	B	761	GLN

5.3.3 RNA [i](#)

There are no RNA molecules in this entry.

5.4 Non-standard residues in protein, DNA, RNA chains [i](#)

There are no non-standard protein/DNA/RNA residues in this entry.

5.5 Carbohydrates [i](#)

There are no monosaccharides in this entry.

5.6 Ligand geometry [i](#)

Of 6 ligands modelled in this entry, 4 are monoatomic - leaving 2 for Mogul analysis.

In the following table, the Counts columns list the number of bonds (or angles) for which Mogul statistics could be retrieved, the number of bonds (or angles) that are observed in the model and the number of bonds (or angles) that are defined in the Chemical Component Dictionary. The Link column lists molecule types, if any, to which the group is linked. The Z score for a bond length (or angle) is the number of standard deviations the observed value is removed from the expected value. A bond length (or angle) with $|Z| > 2$ is considered an outlier worth inspection. RMSZ is the root-mean-square of all Z scores of the bond lengths (or angles).

Mol	Type	Chain	Res	Link	Bond lengths			Bond angles		
					Counts	RMSZ	# Z > 2	Counts	RMSZ	# Z > 2
4	JY7	B	803	-	23,27,27	0.79	1 (4%)	27,40,40	1.58	2 (7%)
4	JY7	A	803	-	23,27,27	0.75	1 (4%)	27,40,40	1.56	2 (7%)

In the following table, the Chirals column lists the number of chiral outliers, the number of chiral centers analysed, the number of these observed in the model and the number defined in the Chemical Component Dictionary. Similar counts are reported in the Torsion and Rings columns. '-' means no outliers of that kind were identified.

Mol	Type	Chain	Res	Link	Chirals	Torsions	Rings
4	JY7	B	803	-	-	0/6/6/6	0/4/4/4
4	JY7	A	803	-	-	0/6/6/6	0/4/4/4

All (2) bond length outliers are listed below:

Mol	Chain	Res	Type	Atoms	Z	Observed(Å)	Ideal(Å)
4	A	803	JY7	C9-N4	-2.81	1.33	1.35
4	B	803	JY7	C9-N4	-2.49	1.33	1.35

All (4) bond angle outliers are listed below:

Mol	Chain	Res	Type	Atoms	Z	Observed(°)	Ideal(°)
4	B	803	JY7	C5-C7-C8	-6.81	114.10	120.07
4	A	803	JY7	C5-C7-C8	-6.53	114.34	120.07
4	A	803	JY7	C10-N3-C8	2.98	130.61	124.18
4	B	803	JY7	C10-N3-C8	2.70	130.00	124.18

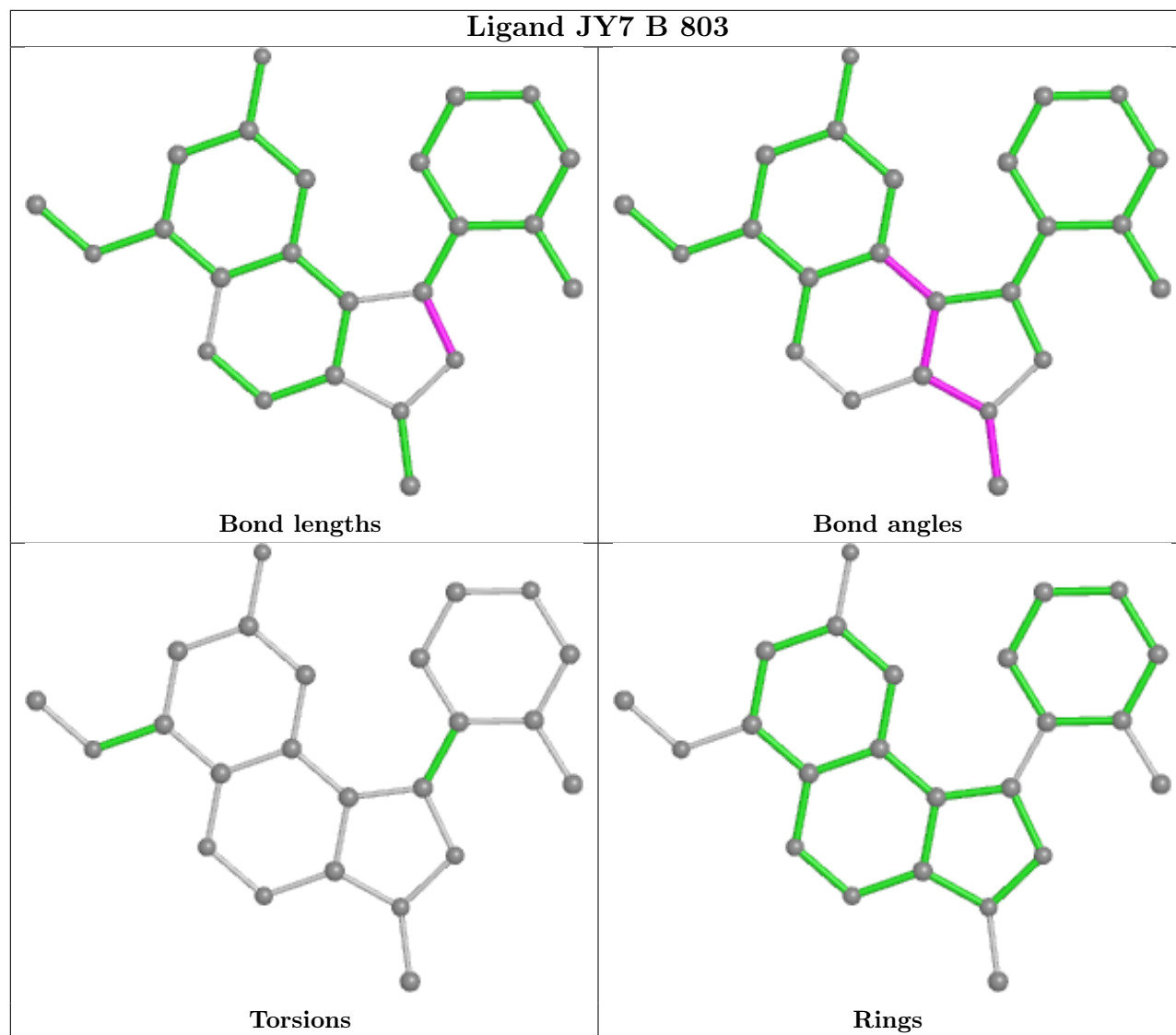
There are no chirality outliers.

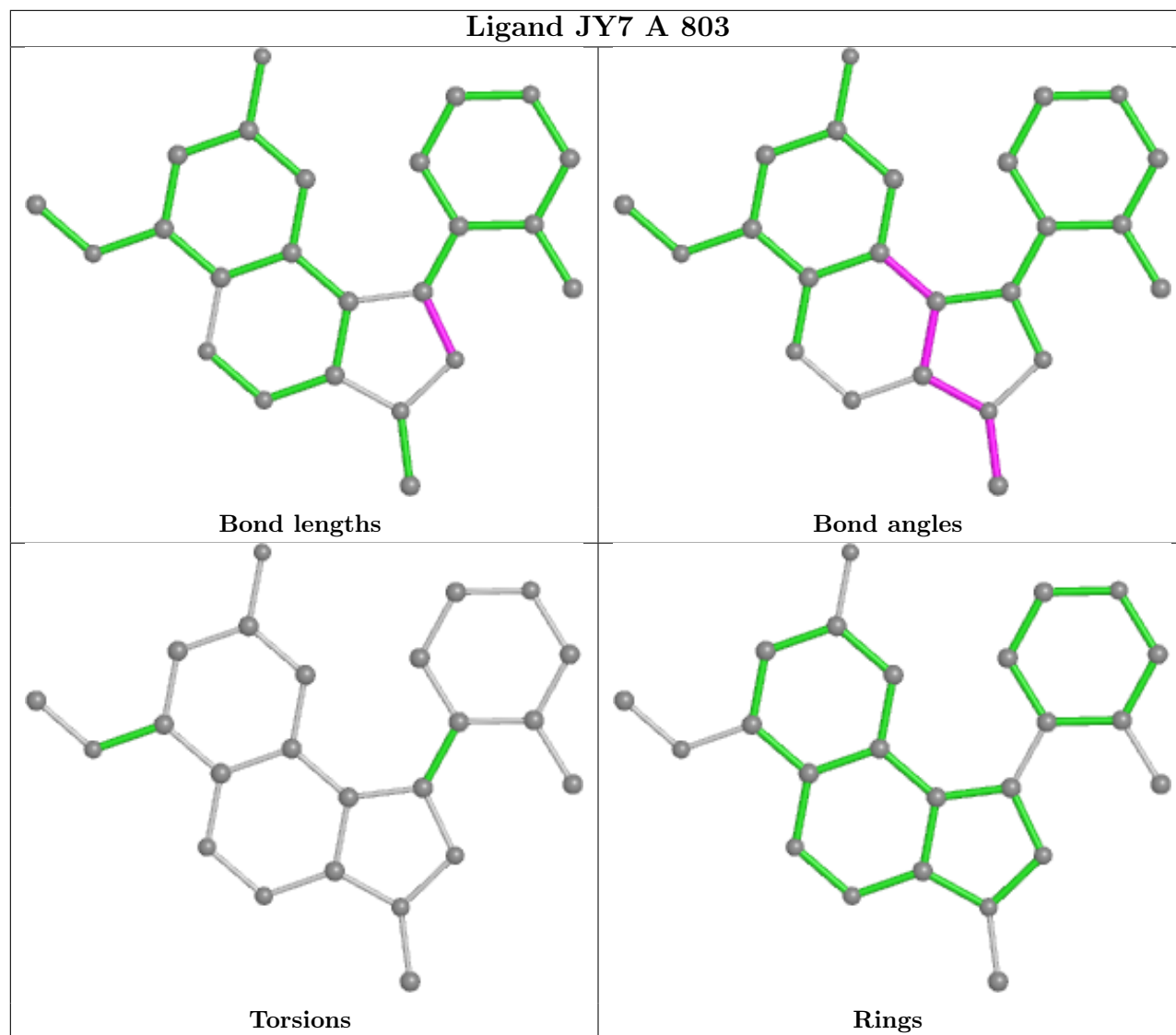
There are no torsion outliers.

There are no ring outliers.

No monomer is involved in short contacts.

The following is a two-dimensional graphical depiction of Mogul quality analysis of bond lengths, bond angles, torsion angles, and ring geometry for all instances of the Ligand of Interest. In addition, ligands with molecular weight > 250 and outliers as shown on the validation Tables will also be included. For torsion angles, if less than 5% of the Mogul distribution of torsion angles is within 10 degrees of the torsion angle in question, then that torsion angle is considered an outlier. Any bond that is central to one or more torsion angles identified as an outlier by Mogul will be highlighted in the graph. For rings, the root-mean-square deviation (RMSD) between the ring in question and similar rings identified by Mogul is calculated over all ring torsion angles. If the average RMSD is greater than 60 degrees and the minimal RMSD between the ring in question and any Mogul-identified rings is also greater than 60 degrees, then that ring is considered an outlier. The outliers are highlighted in purple. The color gray indicates Mogul did not find sufficient equivalents in the CSD to analyse the geometry.





5.7 Other polymers [i](#)

There are no such residues in this entry.

5.8 Polymer linkage issues [i](#)

There are no chain breaks in this entry.

6 Fit of model and data

6.1 Protein, DNA and RNA chains

In the following table, the column labelled ‘#RSRZ > 2’ contains the number (and percentage) of RSRZ outliers, followed by percent RSRZ outliers for the chain as percentile scores relative to all X-ray entries and entries of similar resolution. The OWAB column contains the minimum, median, 95th percentile and maximum values of the occupancy-weighted average B-factor per residue. The column labelled ‘Q < 0.9’ lists the number of (and percentage) of residues with an average occupancy less than 0.9.

Mol	Chain	Analysed	<RSRZ>	#RSRZ>2	OWAB(Å ²)	Q<0.9
1	A	322/332 (96%)	0.20	8 (2%) 57 67	47, 71, 105, 121	0
1	B	323/332 (97%)	0.30	12 (3%) 41 54	49, 76, 107, 118	0
All	All	645/664 (97%)	0.25	20 (3%) 49 61	47, 73, 107, 121	0

All (20) RSRZ outliers are listed below:

Mol	Chain	Res	Type	RSRZ
1	A	503	PHE	3.7
1	B	447	HIS	3.0
1	B	456	TRP	2.9
1	A	610	ILE	2.8
1	B	577	LYS	2.8
1	B	448	MET	2.8
1	A	505	LEU	2.8
1	A	448	MET	2.7
1	B	500	THR	2.7
1	B	585	LEU	2.7
1	B	450	ILE	2.7
1	B	623	LEU	2.6
1	A	501	SER	2.3
1	B	491	VAL	2.3
1	B	561	LEU	2.2
1	A	460	MET	2.2
1	B	614	LEU	2.1
1	A	687	LEU	2.1
1	B	451	CYS	2.1
1	A	498	CYS	2.0

6.2 Non-standard residues in protein, DNA, RNA chains [i](#)

There are no non-standard protein/DNA/RNA residues in this entry.

6.3 Carbohydrates [i](#)

There are no monosaccharides in this entry.

6.4 Ligands [i](#)

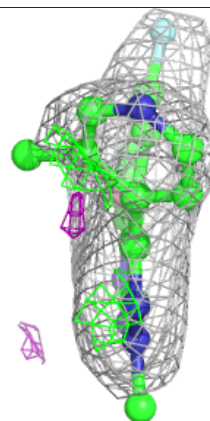
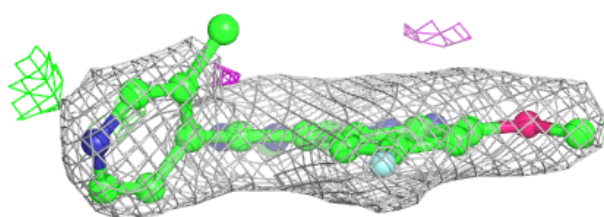
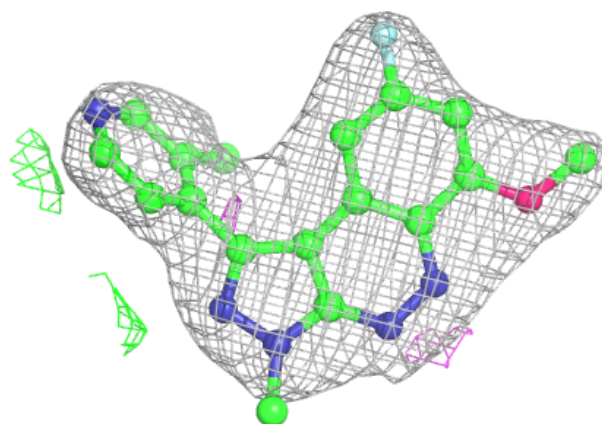
In the following table, the Atoms column lists the number of modelled atoms in the group and the number defined in the chemical component dictionary. The B-factors column lists the minimum, median, 95th percentile and maximum values of B factors of atoms in the group. The column labelled 'Q< 0.9' lists the number of atoms with occupancy less than 0.9.

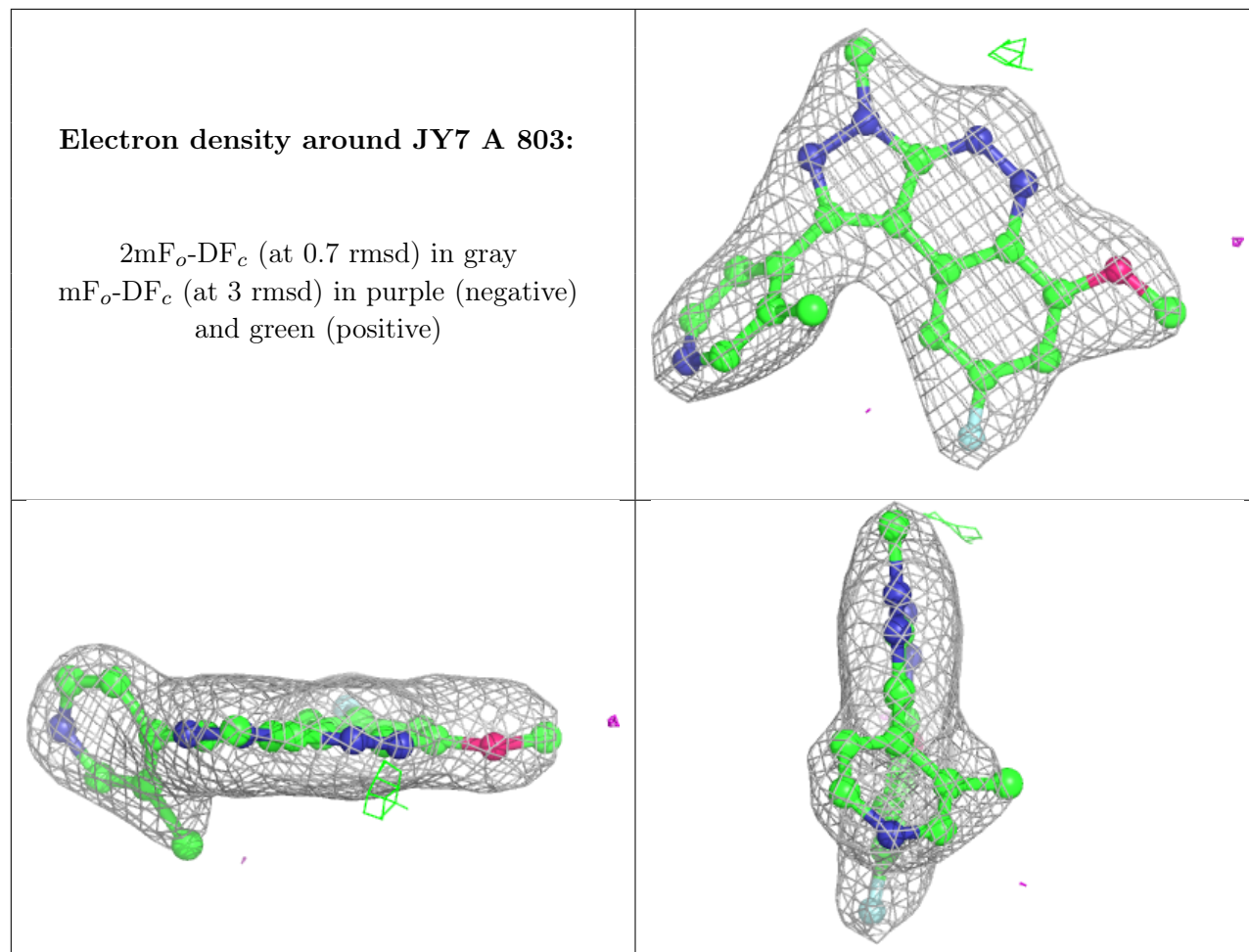
Mol	Type	Chain	Res	Atoms	RSCC	RSR	B-factors(\AA^2)	Q<0.9
4	JY7	B	803	24/24	0.94	0.16	61,70,80,83	0
3	MG	B	802	1/1	0.96	0.24	84,84,84,84	0
4	JY7	A	803	24/24	0.97	0.17	44,55,61,66	0
2	ZN	B	801	1/1	0.98	0.13	61,61,61,61	0
3	MG	A	802	1/1	0.99	0.15	45,45,45,45	0
2	ZN	A	801	1/1	1.00	0.14	59,59,59,59	0

The following is a graphical depiction of the model fit to experimental electron density of all instances of the Ligand of Interest. In addition, ligands with molecular weight > 250 and outliers as shown on the geometry validation Tables will also be included. Each fit is shown from different orientation to approximate a three-dimensional view.

Electron density around JY7 B 803:

$2mF_o-DF_c$ (at 0.7 rmsd) in gray
 mF_o-DF_c (at 3 rmsd) in purple (negative)
and green (positive)





6.5 Other polymers [i](#)

There are no such residues in this entry.