



Full wwPDB X-ray Structure Validation Report ⓘ

May 14, 2020 – 05:03 am BST

PDB ID : 4MRR
Title : Structure of a bacterial Atm1-family ABC transporter
Authors : Lee, J.Y.; Yang, J.G.; Zhitnitsky, D.; Lewinson, O.; Rees, D.C.
Deposited on : 2013-09-17
Resolution : 2.97 Å(reported)

This is a Full wwPDB X-ray Structure Validation Report for a publicly released PDB entry.

We welcome your comments at validation@mail.wwpdb.org

A user guide is available at

<https://www.wwpdb.org/validation/2017/XrayValidationReportHelp>

with specific help available everywhere you see the ⓘ symbol.

The following versions of software and data (see [references ⓘ](#)) were used in the production of this report:

MolProbity : 4.02b-467
Mogul : 1.8.5 (274361), CSD as541be (2020)
Xtriage (Phenix) : 1.13
EDS : 2.11
Percentile statistics : 20191225.v01 (using entries in the PDB archive December 25th 2019)
Refmac : 5.8.0158
CCP4 : 7.0.044 (Gargrove)
Ideal geometry (proteins) : Engh & Huber (2001)
Ideal geometry (DNA, RNA) : Parkinson et al. (1996)
Validation Pipeline (wwPDB-VP) : 2.11

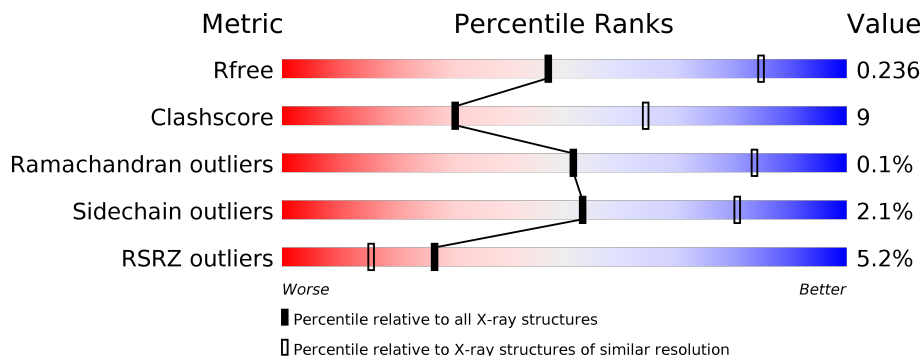
1 Overall quality at a glance

The following experimental techniques were used to determine the structure:

X-RAY DIFFRACTION

The reported resolution of this entry is 2.97 Å.

Percentile scores (ranging between 0-100) for global validation metrics of the entry are shown in the following graphic. The table shows the number of entries on which the scores are based.



Metric	Whole archive (#Entries)	Similar resolution (#Entries, resolution range(Å))
R_{free}	130704	2754 (3.00-2.96)
Clashscore	141614	3103 (3.00-2.96)
Ramachandran outliers	138981	2993 (3.00-2.96)
Sidechain outliers	138945	2996 (3.00-2.96)
RSRZ outliers	127900	2644 (3.00-2.96)

The table below summarises the geometric issues observed across the polymeric chains and their fit to the electron density. The red, orange, yellow and green segments on the lower bar indicate the fraction of residues that contain outliers for ≥ 3 , 2, 1 and 0 types of geometric quality criteria respectively. A grey segment represents the fraction of residues that are not modelled. The numeric value for each fraction is indicated below the corresponding segment, with a dot representing fractions $\leq 5\%$. The upper red bar (where present) indicates the fraction of residues that have poor fit to the electron density. The numeric value is given above the bar.

Mol	Chain	Length	Quality of chain
1	A	614	 5% 77% 20%
1	B	614	 5% 76% 21%

The following table lists non-polymeric compounds, carbohydrate monomers and non-standard residues in protein, DNA, RNA chains that are outliers for geometric or electron-density-fit criteria:

Mol	Type	Chain	Res	Chirality	Geometry	Clashes	Electron density
2	LDA	A	701	-	-	-	X
4	PO4	B	706	-	-	-	X

2 Entry composition [i](#)

There are 4 unique types of molecules in this entry. The entry contains 9415 atoms, of which 0 are hydrogens and 0 are deuteriums.

In the tables below, the ZeroOcc column contains the number of atoms modelled with zero occupancy, the AltConf column contains the number of residues with at least one atom in alternate conformation and the Trace column contains the number of residues modelled with at most 2 atoms.

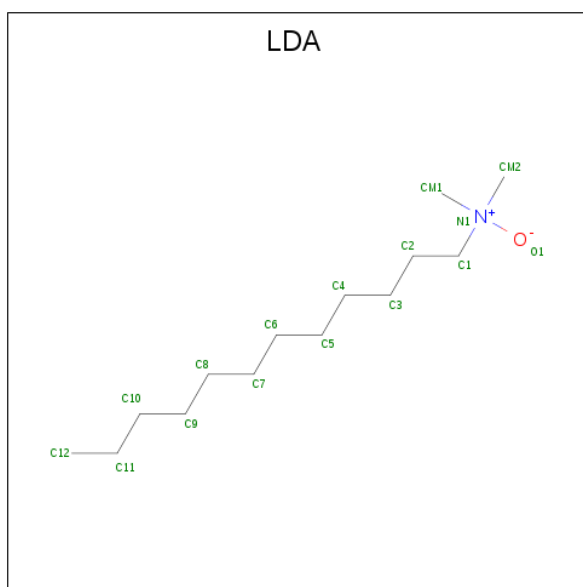
- Molecule 1 is a protein called ABC transporter related protein.

Mol	Chain	Residues	Atoms					ZeroOcc	AltConf	Trace
			Total	C	N	O	Se			
1	A	600	4658	2970	828	848	12	0	0	0
1	B	598	4645	2963	825	845	12	0	0	0

There are 12 discrepancies between the modelled and reference sequences:

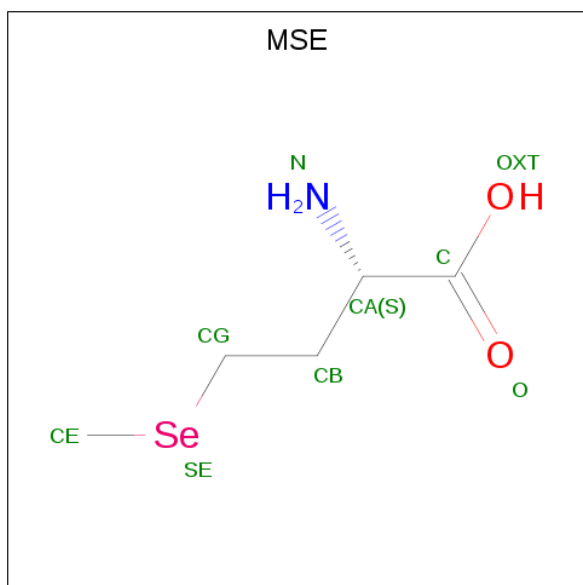
Chain	Residue	Modelled	Actual	Comment	Reference
A	609	HIS	-	EXPRESSION TAG	UNP Q2G506
A	610	HIS	-	EXPRESSION TAG	UNP Q2G506
A	611	HIS	-	EXPRESSION TAG	UNP Q2G506
A	612	HIS	-	EXPRESSION TAG	UNP Q2G506
A	613	HIS	-	EXPRESSION TAG	UNP Q2G506
A	614	HIS	-	EXPRESSION TAG	UNP Q2G506
B	609	HIS	-	EXPRESSION TAG	UNP Q2G506
B	610	HIS	-	EXPRESSION TAG	UNP Q2G506
B	611	HIS	-	EXPRESSION TAG	UNP Q2G506
B	612	HIS	-	EXPRESSION TAG	UNP Q2G506
B	613	HIS	-	EXPRESSION TAG	UNP Q2G506
B	614	HIS	-	EXPRESSION TAG	UNP Q2G506

- Molecule 2 is LAURYL DIMETHYLAMINE-N-OXIDE (three-letter code: LDA) (formula: C₁₄H₃₁NO).



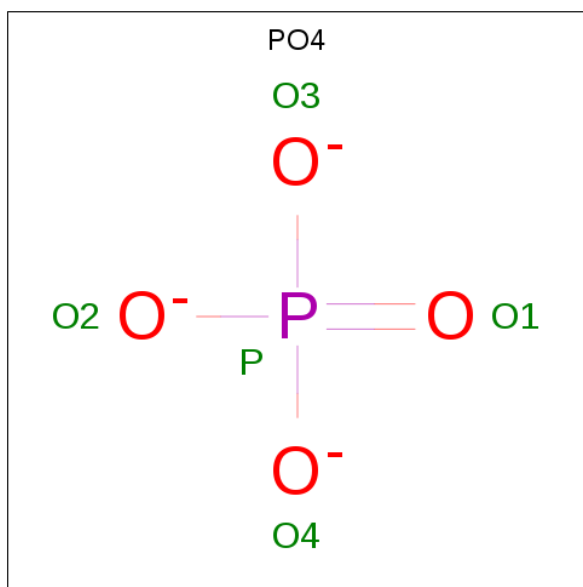
Mol	Chain	Residues	Atoms				ZeroOcc	AltConf
			Total	C	N	O		
2	A	1	Total 16	C 14	N 1	O 1	0	0
2	A	1	Total 16	C 14	N 1	O 1	0	0
2	B	1	Total 16	C 14	N 1	O 1	0	0
2	B	1	Total 16	C 14	N 1	O 1	0	0

- Molecule 3 is SELENOMETHIONINE (three-letter code: MSE) (formula: C₅H₁₁NO₂Se).



Mol	Chain	Residues	Atoms					ZeroOcc	AltConf
3	A	1	Total	C	N	O	Se	0	0
			9	5	1	2	1		
3	B	1	Total	C	N	O	Se	0	0
			9	5	1	2	1		

- Molecule 4 is PHOSPHATE ION (three-letter code: PO4) (formula: O₄P).

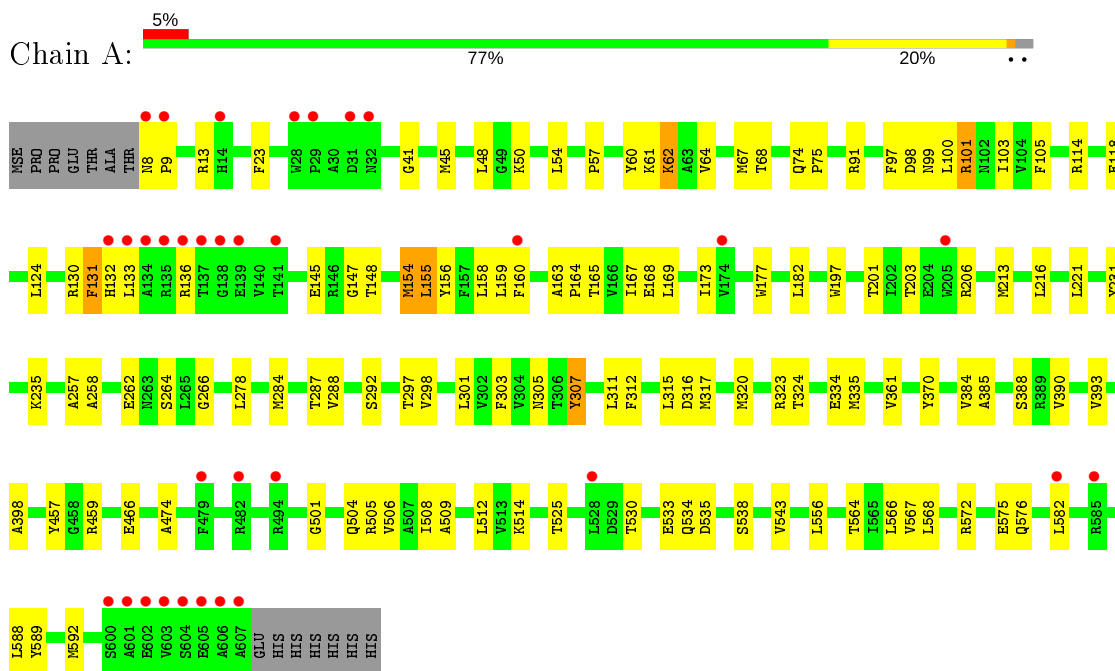


Mol	Chain	Residues	Atoms		ZeroOcc	AltConf
4	A	1	Total	O P	0	0
			5	4 1		
4	A	1	Total	O P	0	0
			5	4 1		
4	A	1	Total	O P	0	0
			5	4 1		
4	B	1	Total	O P	0	0
			5	4 1		
4	B	1	Total	O P	0	0
			5	4 1		
4	B	1	Total	O P	0	0
			5	4 1		

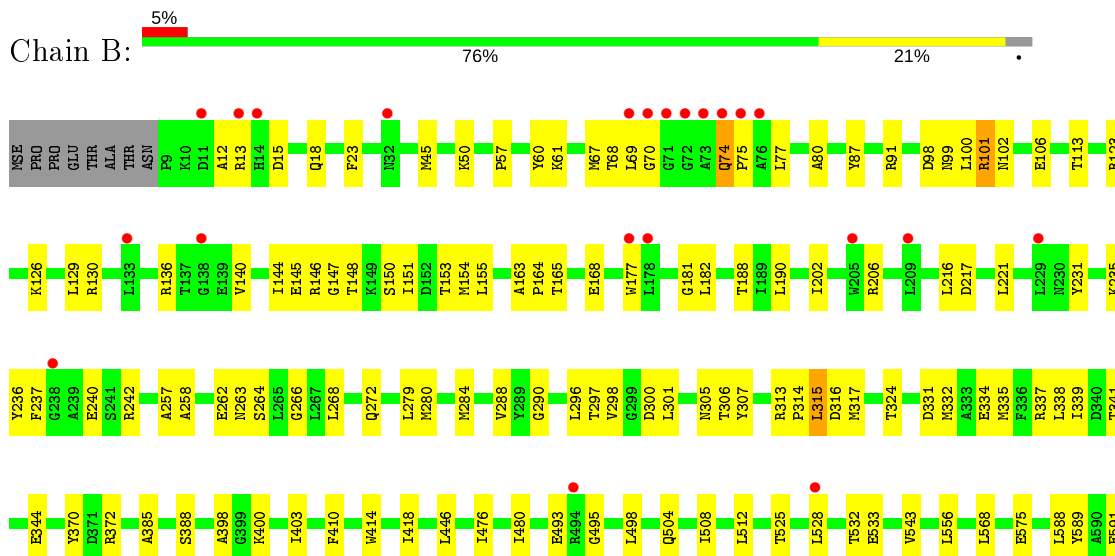
3 Residue-property plots [i](#)

These plots are drawn for all protein, RNA and DNA chains in the entry. The first graphic for a chain summarises the proportions of the various outlier classes displayed in the second graphic. The second graphic shows the sequence view annotated by issues in geometry and electron density. Residues are color-coded according to the number of geometric quality criteria for which they contain at least one outlier: green = 0, yellow = 1, orange = 2 and red = 3 or more. A red dot above a residue indicates a poor fit to the electron density ($RSRZ > 2$). Stretches of 2 or more consecutive residues without any outlier are shown as a green connector. Residues present in the sample, but not in the model, are shown in grey.

- Molecule 1: ABC transporter related protein



- Molecule 1: ABC transporter related protein



M602	
A601	
E602	
V603	
S604	
E605	
A606	
ALA	
GLU	
HIS	
HIS	
HIS	
HIS	
HIS	
HIS	
HIS	

4 Data and refinement statistics

Property	Value	Source
Space group	C 1 2 1	Depositor
Cell constants a, b, c, α , β , γ	322.76Å 95.95Å 81.13Å 90.00° 101.78° 90.00°	Depositor
Resolution (Å)	39.50 – 2.97 39.50 – 2.97	Depositor EDS
% Data completeness (in resolution range)	97.7 (39.50-2.97) 86.7 (39.50-2.97)	Depositor EDS
R_{merge}	(Not available)	Depositor
R_{sym}	(Not available)	Depositor
$\langle I/\sigma(I) \rangle$ ¹	0.59 (at 2.95Å)	Xtriage
Refinement program	PHENIX (phenix.refine: 1.8.2_1309), REFMAC (rigid body)	Depositor
R, R_{free}	0.203 , 0.236 0.203 , 0.236	Depositor DCC
R_{free} test set	2527 reflections (5.10%)	wwPDB
Wilson B-factor (Å ²)	86.7	Xtriage
Anisotropy	0.478	Xtriage
Bulk solvent k_{sol} (e/Å ³), B_{sol} (Å ²)	0.28 , 41.4	EDS
L-test for twinning ²	$\langle L \rangle = 0.48$, $\langle L^2 \rangle = 0.31$	Xtriage
Estimated twinning fraction	0.026 for -h-2*k,l	Xtriage
F_o, F_c correlation	0.94	EDS
Total number of atoms	9415	wwPDB
Average B, all atoms (Å ²)	64.0	wwPDB

Xtriage's analysis on translational NCS is as follows: *The largest off-origin peak in the Patterson function is 4.03% of the height of the origin peak. No significant pseudotranslation is detected.*

¹Intensities estimated from amplitudes.

²Theoretical values of $\langle |L| \rangle$, $\langle L^2 \rangle$ for acentric reflections are 0.5, 0.333 respectively for untwinned datasets, and 0.375, 0.2 for perfectly twinned datasets.

5 Model quality [i](#)

5.1 Standard geometry [i](#)

Bond lengths and bond angles in the following residue types are not validated in this section: PO4, LDA

The Z score for a bond length (or angle) is the number of standard deviations the observed value is removed from the expected value. A bond length (or angle) with $|Z| > 5$ is considered an outlier worth inspection. RMSZ is the root-mean-square of all Z scores of the bond lengths (or angles).

Mol	Chain	Bond lengths		Bond angles	
		RMSZ	# Z >5	RMSZ	# Z >5
1	A	0.51	0/4732	0.64	0/6408
1	B	0.51	0/4719	0.66	0/6389
All	All	0.51	0/9451	0.65	0/12797

There are no bond length outliers.

There are no bond angle outliers.

There are no chirality outliers.

There are no planarity outliers.

5.2 Too-close contacts [i](#)

In the following table, the Non-H and H(model) columns list the number of non-hydrogen atoms and hydrogen atoms in the chain respectively. The H(added) column lists the number of hydrogen atoms added and optimized by MolProbity. The Clashes column lists the number of clashes within the asymmetric unit, whereas Symm-Clashes lists symmetry related clashes.

Mol	Chain	Non-H	H(model)	H(added)	Clashes	Symm-Clashes
1	A	4658	0	4733	95	1
1	B	4645	0	4723	97	1
2	A	32	0	62	6	0
2	B	32	0	62	6	0
3	A	9	0	8	3	0
3	B	9	0	8	5	0
4	A	15	0	0	2	0
4	B	15	0	0	0	0
All	All	9415	0	9596	175	1

The all-atom clashscore is defined as the number of clashes found per 1000 atoms (including hydrogen atoms). The all-atom clashscore for this structure is 9.

All (175) close contacts within the same asymmetric unit are listed below, sorted by their clash magnitude.

Atom-1	Atom-2	Interatomic distance (Å)	Clash overlap (Å)
1:A:147:GLY:HA3	2:A:701:LDA:H51	1.53	0.91
1:A:154:MSE:HE3	1:A:158:LEU:HD12	1.56	0.87
1:B:61:LYS:NZ	1:B:300:ASP:OD1	2.09	0.85
1:B:45:MSE:HB2	1:B:101:ARG:HB3	1.60	0.83
1:A:334:GLU:HG2	2:A:701:LDA:H22	1.66	0.78
1:B:74:GLN:HB3	1:B:75:PRO:HD2	1.65	0.78
1:B:101:ARG:NH1	1:B:102:ASN:OD1	2.16	0.78
1:A:64:VAL:HA	1:A:67:MSE:HE2	1.67	0.75
1:A:284:MSE:HE3	1:A:305:ASN:HB2	1.68	0.75
1:A:317:MSE:HG2	3:A:703:MSE:HE3	1.68	0.75
1:B:334:GLU:HG2	2:B:702:LDA:H11	1.71	0.70
1:B:235:LYS:NZ	1:B:240:GLU:OE2	2.24	0.70
1:A:130:ARG:NH2	1:A:370:TYR:O	2.24	0.69
1:B:68:THR:HG21	1:B:298:VAL:HG11	1.74	0.69
1:A:316:ASP:O	3:A:703:MSE:N	2.26	0.68
1:B:130:ARG:NH2	1:B:370:TYR:O	2.26	0.68
1:A:501:GLY:O	1:A:505:ARG:HG3	1.93	0.67
1:A:148:THR:HG21	2:B:701:LDA:HM21	1.76	0.67
1:A:575:GLU:OE2	1:A:588:LEU:N	2.28	0.66
1:B:45:MSE:HE2	1:B:100:LEU:HB2	1.78	0.66
1:A:165:THR:HG21	1:A:315:LEU:HD21	1.80	0.64
1:A:154:MSE:HE2	1:A:155:LEU:HA	1.78	0.64
1:B:398:ALA:HB1	1:B:568:LEU:HB2	1.80	0.63
1:A:114:ARG:NH2	4:A:704:PO4:O1	2.32	0.63
1:A:566:LEU:HD23	1:A:576:GLN:HG3	1.79	0.63
1:A:98:ASP:O	1:A:101:ARG:HG3	2.00	0.61
1:A:231:TYR:OH	1:A:235:LYS:HE2	2.00	0.61
1:B:57:PRO:HB3	1:B:306:THR:HG21	1.81	0.61
1:A:474:ALA:O	1:A:505:ARG:NH1	2.33	0.60
1:A:67:MSE:HE3	1:B:298:VAL:HG23	1.83	0.59
1:B:57:PRO:HG2	1:B:307:TYR:HE1	1.66	0.58
1:A:45:MSE:HB2	1:A:101:ARG:HB3	1.84	0.58
1:A:335:MSE:HE3	2:A:701:LDA:H62	1.86	0.58
1:B:144:ILE:O	1:B:148:THR:HG23	2.04	0.58
1:A:23:PHE:CE2	1:A:155:LEU:HD11	2.39	0.58
1:B:335:MSE:HE3	2:B:702:LDA:H31	1.87	0.57
1:B:258:ALA:O	1:B:262:GLU:HG2	2.05	0.57
1:B:74:GLN:HB3	1:B:75:PRO:CD	2.35	0.56
1:A:41:GLY:O	1:A:45:MSE:HG2	2.06	0.56
1:A:105:PHE:CB	1:A:160:PHE:HZ	2.19	0.56

Continued on next page...

Continued from previous page...

Atom-1	Atom-2	Interatomic distance (Å)	Clash overlap (Å)
1:B:493:GLU:HA	1:B:495:GLY:H	1.71	0.56
1:A:457:TYR:O	1:B:242:ARG:NH2	2.38	0.55
1:A:588:LEU:O	1:A:592:MSE:HG3	2.07	0.55
1:B:316:ASP:O	3:B:703:MSE:N	2.39	0.55
1:A:105:PHE:HB3	1:A:160:PHE:HZ	1.71	0.55
1:A:163:ALA:HB3	1:A:164:PRO:HD3	1.86	0.55
1:A:535:ASP:O	1:A:538:SER:OG	2.23	0.55
1:B:284:MSE:HE3	1:B:305:ASN:HB2	1.88	0.55
1:B:123:ARG:NH1	1:B:341:THR:O	2.39	0.55
1:B:512:LEU:HD21	1:B:543:VAL:HG13	1.89	0.55
1:A:50:LYS:CE	1:A:168:GLU:HB2	2.37	0.54
1:B:45:MSE:HE2	1:B:100:LEU:CB	2.38	0.54
1:B:147:GLY:HA3	2:B:702:LDA:H52	1.90	0.54
1:B:216:LEU:HD12	1:B:257:ALA:HB2	1.90	0.53
1:A:258:ALA:O	1:A:262:GLU:HG2	2.08	0.53
1:A:262:GLU:HG3	1:B:106:GLU:OE2	2.09	0.53
1:B:337:ARG:HH11	1:B:337:ARG:HB3	1.72	0.53
1:B:272:GLN:HE22	3:B:703:MSE:N	2.07	0.52
1:B:504:GLN:O	1:B:508:ILE:HG13	2.09	0.52
1:A:68:THR:HG21	1:A:298:VAL:HG11	1.89	0.52
1:B:385:ALA:O	1:B:388:SER:OG	2.26	0.52
1:A:385:ALA:O	1:A:388:SER:OG	2.27	0.52
1:B:130:ARG:NH1	1:B:344:GLU:OE2	2.42	0.52
1:B:556:LEU:HD22	1:B:589:TYR:HE1	1.75	0.52
1:B:163:ALA:HB3	1:B:164:PRO:HD3	1.91	0.51
1:A:169:LEU:O	1:A:173:ILE:HG12	2.08	0.51
1:A:323:ARG:NH2	4:A:706:PO4:O4	2.42	0.51
1:A:530:THR:O	1:A:534:GLN:HG2	2.11	0.51
1:A:504:GLN:O	1:A:508:ILE:HG13	2.11	0.51
1:A:221:LEU:CD2	1:B:145:GLU:HG3	2.41	0.50
1:A:525:THR:HB	1:A:533:GLU:HG3	1.93	0.50
1:A:154:MSE:HE2	1:A:155:LEU:CA	2.41	0.50
1:A:206:ARG:HG2	1:A:264:SER:OG	2.11	0.50
1:A:99:ASN:OD1	1:B:266:GLY:HA2	2.11	0.50
1:B:12:ALA:HB3	1:B:18:GLN:NE2	2.27	0.50
1:A:67:MSE:SE	1:B:288:VAL:HG22	2.61	0.49
1:B:317:MSE:HG2	3:B:703:MSE:SE	2.63	0.49
1:A:398:ALA:HB1	1:A:568:LEU:HB2	1.93	0.49
1:B:165:THR:HG21	1:B:315:LEU:HD11	1.94	0.49
1:A:197:TRP:O	1:A:201:THR:HG23	2.13	0.49
1:A:74:GLN:HA	1:A:75:PRO:C	2.32	0.49

Continued on next page...

Continued from previous page...

Atom-1	Atom-2	Interatomic distance (Å)	Clash overlap (Å)
1:B:288:VAL:HG23	1:B:301:LEU:HD13	1.95	0.49
1:A:64:VAL:HA	1:A:67:MSE:CE	2.37	0.48
1:B:113:THR:HB	2:B:702:LDA:H123	1.95	0.48
1:A:288:VAL:HG21	1:B:80:ALA:HB1	1.95	0.48
1:A:177:TRP:HZ3	1:A:182:LEU:HD13	1.79	0.48
1:B:151:ILE:HG23	1:B:332:MSE:HE3	1.96	0.48
1:A:57:PRO:HG2	1:A:307:TYR:CE1	2.49	0.47
1:A:509:ALA:O	1:A:512:LEU:HB2	2.15	0.47
1:B:446:LEU:HD11	1:B:498:LEU:HD12	1.96	0.47
1:B:146:ARG:NH2	1:B:331:ASP:OD2	2.43	0.47
1:A:91:ARG:NH1	1:B:280:MSE:HE3	2.30	0.47
1:A:320:MSE:O	1:A:324:THR:HG23	2.15	0.47
1:B:317:MSE:HA	3:B:703:MSE:CB	2.45	0.46
1:A:48:LEU:HB3	1:A:97:PHE:CD2	2.50	0.46
1:A:567:VAL:HB	1:A:575:GLU:HB2	1.98	0.46
1:B:98:ASP:O	1:B:101:ARG:HG3	2.15	0.46
1:B:45:MSE:CB	1:B:101:ARG:HB3	2.41	0.46
1:B:50:LYS:NZ	1:B:168:GLU:OE2	2.31	0.46
1:B:400:LYS:O	1:B:403:ILE:HG12	2.15	0.46
1:A:287:THR:HG21	1:A:301:LEU:HA	1.98	0.46
1:A:361:VAL:HB	1:A:384:VAL:HB	1.97	0.46
1:B:147:GLY:O	1:B:150:SER:HB3	2.16	0.46
1:A:156:TYR:CD1	1:A:160:PHE:HD2	2.34	0.46
1:A:512:LEU:HD21	1:A:543:VAL:HG13	1.98	0.46
1:A:45:MSE:HE2	1:A:100:LEU:HB2	1.97	0.45
1:A:335:MSE:HE3	2:A:701:LDA:H32	1.98	0.45
1:B:202:ILE:HG21	1:B:268:LEU:HB2	1.97	0.45
1:A:514:LYS:HD2	1:B:237:PHE:HD1	1.80	0.45
1:B:334:GLU:OE2	1:B:337:ARG:NH1	2.49	0.45
1:B:123:ARG:HD2	1:B:339:ILE:HA	1.98	0.45
1:B:372:ARG:HD2	1:B:414:TRP:CZ2	2.52	0.45
1:B:575:GLU:OE1	1:B:588:LEU:N	2.39	0.45
1:A:114:ARG:NH1	1:A:118:GLU:OE2	2.49	0.45
1:A:145:GLU:HG3	1:B:221:LEU:CD2	2.47	0.45
1:B:217:ASP:OD1	2:B:701:LDA:HM13	2.16	0.45
1:B:153:THR:HG22	1:B:324:THR:HG21	1.99	0.45
1:B:181:GLY:HA3	1:B:182:LEU:HA	1.76	0.45
1:B:23:PHE:CE2	1:B:155:LEU:HD11	2.51	0.45
1:A:213:MSE:HE3	1:A:258:ALA:CB	2.47	0.45
1:A:131:PHE:CZ	1:A:133:LEU:HD12	2.51	0.45
1:B:15:ASP:N	1:B:15:ASP:OD1	2.50	0.44

Continued on next page...

Continued from previous page...

Atom-1	Atom-2	Interatomic distance (Å)	Clash overlap (Å)
1:B:68:THR:C	1:B:70:GLY:HA3	2.38	0.44
1:B:13:ARG:HG2	1:B:13:ARG:O	2.18	0.44
1:B:476:ILE:O	1:B:480:ILE:HG13	2.17	0.44
1:B:57:PRO:HB3	1:B:306:THR:CG2	2.46	0.44
1:A:459:ARG:NH2	1:A:466:GLU:OE1	2.48	0.43
1:A:216:LEU:HD12	1:A:257:ALA:HB2	2.00	0.43
1:A:64:VAL:HG12	1:A:298:VAL:HG13	2.00	0.43
1:B:136:ARG:O	1:B:140:VAL:HG22	2.18	0.43
1:B:206:ARG:HG2	1:B:264:SER:OG	2.18	0.43
1:A:506:VAL:O	1:A:509:ALA:HB3	2.18	0.43
1:B:123:ARG:O	1:B:126:LYS:N	2.51	0.43
1:A:556:LEU:HD23	1:A:589:TYR:CE1	2.54	0.43
1:A:582:LEU:HD13	1:A:589:TYR:CG	2.54	0.43
1:A:317:MSE:HA	3:A:703:MSE:HG3	2.01	0.43
1:A:105:PHE:HB3	1:A:160:PHE:CZ	2.50	0.42
1:B:177:TRP:HZ3	1:B:182:LEU:HD13	1.84	0.42
1:B:231:TYR:OH	1:B:235:LYS:HE2	2.19	0.42
1:A:67:MSE:CE	1:B:298:VAL:HG23	2.47	0.42
1:B:337:ARG:NH1	1:B:337:ARG:HB3	2.34	0.42
1:A:136:ARG:NH2	1:B:493:GLU:OE1	2.50	0.42
1:B:313:ARG:HB3	1:B:314:PRO:HD3	2.02	0.42
1:A:514:LYS:NZ	1:B:236:TYR:O	2.53	0.42
1:A:311:LEU:HD23	1:A:312:PHE:CE2	2.54	0.42
1:B:188:THR:HG22	1:B:279:LEU:HD21	2.01	0.42
1:A:288:VAL:HG23	1:B:67:MSE:HE3	2.01	0.42
1:B:87:TYR:CE2	1:B:91:ARG:HD2	2.54	0.42
1:A:61:LYS:HB2	1:A:303:PHE:HB2	2.02	0.42
1:B:130:ARG:HH11	1:B:344:GLU:CD	2.21	0.42
1:B:588:LEU:O	1:B:592:MSE:HG3	2.20	0.42
1:A:266:GLY:HA2	1:B:99:ASN:OD1	2.20	0.42
1:A:148:THR:OG1	2:A:701:LDA:H81	2.20	0.42
1:A:50:LYS:HG3	1:A:167:ILE:HG21	2.01	0.41
1:B:50:LYS:HD3	1:B:50:LYS:HA	1.72	0.41
1:B:290:GLY:HA3	1:B:296:LEU:HD12	2.01	0.41
1:A:105:PHE:CZ	1:A:159:LEU:HD13	2.55	0.41
1:B:57:PRO:CG	1:B:307:TYR:HE1	2.31	0.41
1:B:525:THR:HB	1:B:533:GLU:HG3	2.01	0.41
1:B:317:MSE:HA	3:B:703:MSE:HB3	2.03	0.41
1:A:8:ASN:HA	1:A:9:PRO:HD3	1.87	0.41
1:B:528:LEU:HD13	1:B:532:THR:HG22	2.02	0.41
1:A:147:GLY:C	2:A:701:LDA:H72	2.39	0.41

Continued on next page...

Continued from previous page...

Atom-1	Atom-2	Interatomic distance (Å)	Clash overlap (Å)
1:A:292:SER:OG	1:B:77:LEU:HD12	2.21	0.41
1:B:69:LEU:N	1:B:70:GLY:HA3	2.35	0.41
1:A:124:LEU:HD23	1:A:124:LEU:HA	1.82	0.41
1:A:54:LEU:O	1:A:57:PRO:HD2	2.21	0.40
1:A:131:PHE:HD1	1:A:132:HIS:N	2.18	0.40
1:A:393:VAL:O	1:A:567:VAL:HA	2.21	0.40
1:A:103:ILE:HG12	1:B:263:ASN:HA	2.03	0.40
1:A:459:ARG:HH21	1:A:466:GLU:CD	2.25	0.40
1:A:62:LYS:HA	1:A:62:LYS:HD3	1.78	0.40
1:B:129:LEU:HD22	1:B:410:PHE:CD2	2.56	0.40
1:B:338:LEU:HA	1:B:338:LEU:HD23	1.86	0.40
1:B:512:LEU:HA	1:B:512:LEU:HD23	1.95	0.40

All (1) symmetry-related close contacts are listed below. The label for Atom-2 includes the symmetry operator and encoded unit-cell translations to be applied.

Atom-1	Atom-2	Interatomic distance (Å)	Clash overlap (Å)
1:A:13:ARG:NH2	1:B:591:GLU:OE1[4_547]	2.10	0.10

5.3 Torsion angles [i](#)

5.3.1 Protein backbone [i](#)

In the following table, the Percentiles column shows the percent Ramachandran outliers of the chain as a percentile score with respect to all X-ray entries followed by that with respect to entries of similar resolution.

The Analysed column shows the number of residues for which the backbone conformation was analysed, and the total number of residues.

Mol	Chain	Analysed	Favoured	Allowed	Outliers	Percentiles	
1	A	598/614 (97%)	578 (97%)	20 (3%)	0	100	100
1	B	596/614 (97%)	580 (97%)	15 (2%)	1 (0%)	47	80
All	All	1194/1228 (97%)	1158 (97%)	35 (3%)	1 (0%)	51	83

All (1) Ramachandran outliers are listed below:

Mol	Chain	Res	Type
1	B	74	GLN

5.3.2 Protein sidechains [i](#)

In the following table, the Percentiles column shows the percent sidechain outliers of the chain as a percentile score with respect to all X-ray entries followed by that with respect to entries of similar resolution.

The Analysed column shows the number of residues for which the sidechain conformation was analysed, and the total number of residues.

Mol	Chain	Analysed	Rotameric	Outliers	Percentiles	
1	A	478/478 (100%)	465 (97%)	13 (3%)	44	75
1	B	477/478 (100%)	470 (98%)	7 (2%)	65	86
All	All	955/956 (100%)	935 (98%)	20 (2%)	53	80

All (20) residues with a non-rotameric sidechain are listed below:

Mol	Chain	Res	Type
1	A	60	TYR
1	A	62	LYS
1	A	101	ARG
1	A	131	PHE
1	A	154	MSE
1	A	155	LEU
1	A	203	THR
1	A	278	LEU
1	A	297	THR
1	A	307	TYR
1	A	390	VAL
1	A	564	THR
1	A	572	ARG
1	B	60	TYR
1	B	101	ARG
1	B	154	MSE
1	B	190	LEU
1	B	297	THR
1	B	315	LEU
1	B	418	ILE

Some sidechains can be flipped to improve hydrogen bonding and reduce clashes. There are no such sidechains identified.

5.3.3 RNA [i](#)

There are no RNA molecules in this entry.

5.4 Non-standard residues in protein, DNA, RNA chains [i](#)

There are no non-standard protein/DNA/RNA residues in this entry.

5.5 Carbohydrates [i](#)

There are no carbohydrates in this entry.

5.6 Ligand geometry [i](#)

12 ligands are modelled in this entry.

In the following table, the Counts columns list the number of bonds (or angles) for which Mogul statistics could be retrieved, the number of bonds (or angles) that are observed in the model and the number of bonds (or angles) that are defined in the Chemical Component Dictionary. The Link column lists molecule types, if any, to which the group is linked. The Z score for a bond length (or angle) is the number of standard deviations the observed value is removed from the expected value. A bond length (or angle) with $|Z| > 2$ is considered an outlier worth inspection. RMSZ is the root-mean-square of all Z scores of the bond lengths (or angles).

Mol	Type	Chain	Res	Link	Bond lengths			Bond angles		
					Counts	RMSZ	# Z > 2	Counts	RMSZ	# Z > 2
3	MSE	A	703	-	2,8,8	1.44	0	0,9,9	0.00	-
2	LDA	A	701	-	12,15,15	1.44	1 (8%)	14,17,17	0.60	0
4	PO4	B	704	-	4,4,4	0.93	0	6,6,6	0.44	0
4	PO4	A	705	-	4,4,4	0.89	0	6,6,6	0.45	0
4	PO4	B	705	-	4,4,4	0.93	0	6,6,6	0.40	0
3	MSE	B	703	-	2,8,8	1.01	0	0,9,9	0.00	-
4	PO4	B	706	-	4,4,4	0.93	0	6,6,6	0.58	0
4	PO4	A	704	-	4,4,4	0.84	0	6,6,6	0.57	0
2	LDA	B	701	-	12,15,15	1.53	1 (8%)	14,17,17	0.82	1 (7%)
2	LDA	B	702	-	12,15,15	1.50	1 (8%)	14,17,17	0.87	0
2	LDA	A	702	-	12,15,15	1.64	1 (8%)	14,17,17	1.05	1 (7%)
4	PO4	A	706	-	4,4,4	0.76	0	6,6,6	0.46	0

In the following table, the Chirals column lists the number of chiral outliers, the number of chiral centers analysed, the number of these observed in the model and the number defined in the Chemical Component Dictionary. Similar counts are reported in the Torsion and Rings columns. '-' means no outliers of that kind were identified.

Mol	Type	Chain	Res	Link	Chirals	Torsions	Rings
3	MSE	A	703	-	-	2/3/8/8	-
2	LDA	A	701	-	-	10/13/13/13	-

Continued on next page...

Continued from previous page...

Mol	Type	Chain	Res	Link	Chirals	Torsions	Rings
3	MSE	B	703	-	-	2/3/8/8	-
2	LDA	B	701	-	-	9/13/13/13	-
2	LDA	B	702	-	-	7/13/13/13	-
2	LDA	A	702	-	-	8/13/13/13	-

All (4) bond length outliers are listed below:

Mol	Chain	Res	Type	Atoms	Z	Observed(Å)	Ideal(Å)
2	A	702	LDA	O1-N1	-5.57	1.29	1.42
2	B	701	LDA	O1-N1	-5.13	1.30	1.42
2	B	702	LDA	O1-N1	-5.04	1.30	1.42
2	A	701	LDA	O1-N1	-4.91	1.30	1.42

All (2) bond angle outliers are listed below:

Mol	Chain	Res	Type	Atoms	Z	Observed(°)	Ideal(°)
2	A	702	LDA	C1-C2-C3	2.49	120.75	110.67
2	B	701	LDA	C1-C2-C3	2.12	119.26	110.67

There are no chirality outliers.

All (38) torsion outliers are listed below:

Mol	Chain	Res	Type	Atoms
3	A	703	MSE	C-CA-CB-CG
2	A	701	LDA	C2-C1-N1-CM1
2	A	701	LDA	C2-C1-N1-CM2
3	B	703	MSE	N-CA-CB-CG
3	B	703	MSE	C-CA-CB-CG
2	B	701	LDA	C2-C1-N1-O1
2	B	701	LDA	C2-C1-N1-CM1
2	B	701	LDA	C2-C1-N1-CM2
2	B	702	LDA	C2-C1-N1-CM1
2	B	702	LDA	C2-C1-N1-CM2
2	A	702	LDA	C2-C1-N1-O1
2	A	702	LDA	C2-C1-N1-CM1
2	A	701	LDA	C1-C2-C3-C4
2	A	702	LDA	C7-C8-C9-C10
2	A	701	LDA	C6-C7-C8-C9
2	A	701	LDA	C7-C8-C9-C10
2	A	701	LDA	C4-C5-C6-C7

Continued on next page...

Continued from previous page...

Mol	Chain	Res	Type	Atoms
2	B	702	LDA	C11-C10-C9-C8
2	B	701	LDA	C7-C8-C9-C10
2	B	701	LDA	C6-C7-C8-C9
2	A	701	LDA	C5-C6-C7-C8
2	A	701	LDA	C9-C10-C11-C12
2	A	702	LDA	C6-C7-C8-C9
2	A	702	LDA	C1-C2-C3-C4
2	A	702	LDA	C4-C5-C6-C7
2	B	701	LDA	C3-C4-C5-C6
2	A	702	LDA	C3-C4-C5-C6
2	A	701	LDA	C2-C3-C4-C5
2	B	701	LDA	C9-C10-C11-C12
2	B	702	LDA	C7-C8-C9-C10
2	A	702	LDA	C2-C1-N1-CM2
3	A	703	MSE	N-CA-CB-CG
2	B	701	LDA	C1-C2-C3-C4
2	A	701	LDA	C2-C1-N1-O1
2	B	702	LDA	C2-C1-N1-O1
2	B	702	LDA	C6-C7-C8-C9
2	B	702	LDA	C3-C4-C5-C6
2	B	701	LDA	C2-C3-C4-C5

There are no ring outliers.

7 monomers are involved in 22 short contacts:

Mol	Chain	Res	Type	Clashes	Symm-Clashes
3	A	703	MSE	3	0
2	A	701	LDA	6	0
3	B	703	MSE	5	0
4	A	704	PO4	1	0
2	B	701	LDA	2	0
2	B	702	LDA	4	0
4	A	706	PO4	1	0

5.7 Other polymers [i](#)

There are no such residues in this entry.

5.8 Polymer linkage issues [i](#)

There are no chain breaks in this entry.

6 Fit of model and data

6.1 Protein, DNA and RNA chains

In the following table, the column labelled ‘#RSRZ> 2’ contains the number (and percentage) of RSRZ outliers, followed by percent RSRZ outliers for the chain as percentile scores relative to all X-ray entries and entries of similar resolution. The OWAB column contains the minimum, median, 95th percentile and maximum values of the occupancy-weighted average B-factor per residue. The column labelled ‘Q< 0.9’ lists the number of (and percentage) of residues with an average occupancy less than 0.9.

Mol	Chain	Analysed	<RSRZ>	#RSRZ>2	OWAB(Å ²)	Q<0.9
1	A	588/614 (95%)	0.08	33 (5%) 24 13	21, 62, 114, 179	0
1	B	586/614 (95%)	0.07	28 (4%) 30 18	21, 58, 111, 161	0
All	All	1174/1228 (95%)	0.08	61 (5%) 27 16	21, 61, 112, 179	0

All (61) RSRZ outliers are listed below:

Mol	Chain	Res	Type	RSRZ
1	B	71	GLY	11.5
1	B	72	GLY	10.6
1	B	70	GLY	7.8
1	A	138	GLY	7.7
1	B	14	HIS	7.3
1	B	494	ARG	6.0
1	B	74	GLN	5.9
1	A	605	GLU	5.6
1	B	604	SER	5.5
1	A	133	LEU	5.4
1	A	604	SER	5.3
1	A	136	ARG	5.3
1	A	134	ALA	5.0
1	A	607	ALA	4.9
1	A	137	THR	4.8
1	A	135	ARG	4.7
1	B	73	ALA	4.6
1	B	75	PRO	4.4
1	A	603	VAL	4.2
1	A	482	ARG	3.7
1	A	479	PHE	3.7
1	A	601	ALA	3.7
1	A	9	PRO	3.5
1	B	205	TRP	3.3

Continued on next page...

Continued from previous page...

Mol	Chain	Res	Type	RSRZ
1	A	139	GLU	3.3
1	B	69	LEU	3.3
1	B	605	GLU	3.2
1	B	76	ALA	3.0
1	A	602	GLU	2.9
1	A	606	ALA	2.9
1	A	32	ASN	2.9
1	B	229	LEU	2.8
1	A	8	ASN	2.8
1	B	178	LEU	2.8
1	B	11	ASP	2.8
1	B	133	LEU	2.8
1	A	14	HIS	2.7
1	A	494	ARG	2.7
1	B	603	VAL	2.7
1	A	132	HIS	2.6
1	A	29	PRO	2.6
1	B	601	ALA	2.6
1	A	585	ARG	2.6
1	B	209	LEU	2.6
1	A	160	PHE	2.5
1	B	602	GLU	2.5
1	A	141	THR	2.5
1	B	606	ALA	2.5
1	B	528	LEU	2.4
1	B	177	TRP	2.4
1	A	528	LEU	2.4
1	B	138	GLY	2.3
1	B	32	ASN	2.3
1	A	28	TRP	2.2
1	A	582	LEU	2.2
1	B	238	GLY	2.2
1	A	600	SER	2.2
1	A	205	TRP	2.1
1	A	174	VAL	2.1
1	B	13	ARG	2.0
1	A	31	ASP	2.0

6.2 Non-standard residues in protein, DNA, RNA chains

There are no non-standard protein/DNA/RNA residues in this entry.

6.3 Carbohydrates [i](#)

There are no carbohydrates in this entry.

6.4 Ligands [i](#)

In the following table, the Atoms column lists the number of modelled atoms in the group and the number defined in the chemical component dictionary. The B-factors column lists the minimum, median, 95th percentile and maximum values of B factors of atoms in the group. The column labelled 'Q< 0.9' lists the number of atoms with occupancy less than 0.9.

Mol	Type	Chain	Res	Atoms	RSCC	RSR	B-factors(Å ²)	Q<0.9
4	PO4	A	704	5/5	0.62	0.17	129,129,135,142	5
4	PO4	A	706	5/5	0.68	0.32	97,101,102,103	5
3	MSE	A	703	9/9	0.76	0.27	25,63,88,101	9
2	LDA	A	701	16/16	0.76	0.85	51,57,90,90	16
4	PO4	B	706	5/5	0.77	0.48	119,120,123,127	0
2	LDA	B	702	16/16	0.85	0.75	25,54,93,103	0
3	MSE	B	703	9/9	0.86	0.26	35,55,86,94	9
4	PO4	B	704	5/5	0.87	0.18	92,93,100,103	5
4	PO4	B	705	5/5	0.90	0.09	98,103,106,110	0
4	PO4	A	705	5/5	0.91	0.15	73,82,84,85	5
2	LDA	B	701	16/16	0.91	0.80	48,58,77,77	16
2	LDA	A	702	16/16	0.93	0.67	35,43,52,52	16

6.5 Other polymers [i](#)

There are no such residues in this entry.