



Full wwPDB X-ray Structure Validation Report ⓘ

May 15, 2020 – 01:24 am BST

PDB ID : 1MM6
Title : crystal structure of the GluR2 ligand binding core (S1S2J) in complex with quisqualate in a non zinc crystal form at 2.15 angstroms resolution
Authors : Jin, R.; Horning, M.; Mayer, M.L.; Gouaux, E.
Deposited on : 2002-09-03
Resolution : 2.15 Å(reported)

This is a Full wwPDB X-ray Structure Validation Report for a publicly released PDB entry.

We welcome your comments at validation@mail.wwpdb.org

A user guide is available at

<https://www.wwpdb.org/validation/2017/XrayValidationReportHelp>

with specific help available everywhere you see the ⓘ symbol.

The following versions of software and data (see [references ⓘ](#)) were used in the production of this report:

MolProbity : 4.02b-467
Mogul : 1.8.5 (274361), CSD as541be (2020)
Xtrriage (Phenix) : **NOT EXECUTED**
EDS : **NOT EXECUTED**
Percentile statistics : 20191225.v01 (using entries in the PDB archive December 25th 2019)
Ideal geometry (proteins) : Engh & Huber (2001)
Ideal geometry (DNA, RNA) : Parkinson et al. (1996)
Validation Pipeline (wwPDB-VP) : 2.11

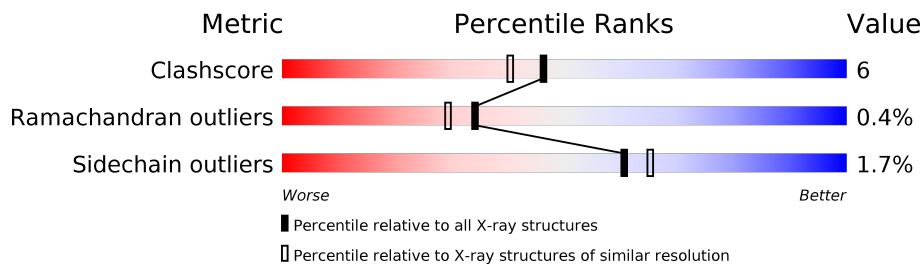
1 Overall quality at a glance i

The following experimental techniques were used to determine the structure:

X-RAY DIFFRACTION

The reported resolution of this entry is 2.15 Å.

Percentile scores (ranging between 0-100) for global validation metrics of the entry are shown in the following graphic. The table shows the number of entries on which the scores are based.



Metric	Whole archive (#Entries)	Similar resolution (#Entries, resolution range(Å))
Clashscore	141614	1585 (2.16-2.16)
Ramachandran outliers	138981	1560 (2.16-2.16)
Sidechain outliers	138945	1559 (2.16-2.16)

The table below summarises the geometric issues observed across the polymeric chains and their fit to the electron density. The red, orange, yellow and green segments on the lower bar indicate the fraction of residues that contain outliers for ≥ 3 , 2, 1 and 0 types of geometric quality criteria respectively. A grey segment represents the fraction of residues that are not modelled. The numeric value for each fraction is indicated below the corresponding segment, with a dot representing fractions $\leq 5\%$.

Note EDS was not executed.

Mol	Chain	Length	Quality of chain
1	A	263	
1	B	263	

The following table lists non-polymeric compounds, carbohydrate monomers and non-standard residues in protein, DNA, RNA chains that are outliers for geometric or electron-density-fit criteria:

Mol	Type	Chain	Res	Chirality	Geometry	Clashes	Electron density
4	GOL	B	701	-	-	X	-

2 Entry composition

There are 5 unique types of molecules in this entry. The entry contains 4486 atoms, of which 0 are hydrogens and 0 are deuteriums.

In the tables below, the ZeroOcc column contains the number of atoms modelled with zero occupancy, the AltConf column contains the number of residues with at least one atom in alternate conformation and the Trace column contains the number of residues modelled with at most 2 atoms.

- Molecule 1 is a protein called GLUTAMATE RECEPTOR 2.

Mol	Chain	Residues	Atoms					ZeroOcc	AltConf	Trace
			Total	C	N	O	S			
1	A	261	1989	1266	328	381	14	0	0	0
1	B	259	2002	1274	333	381	14	0	0	0

There are 8 discrepancies between the modelled and reference sequences:

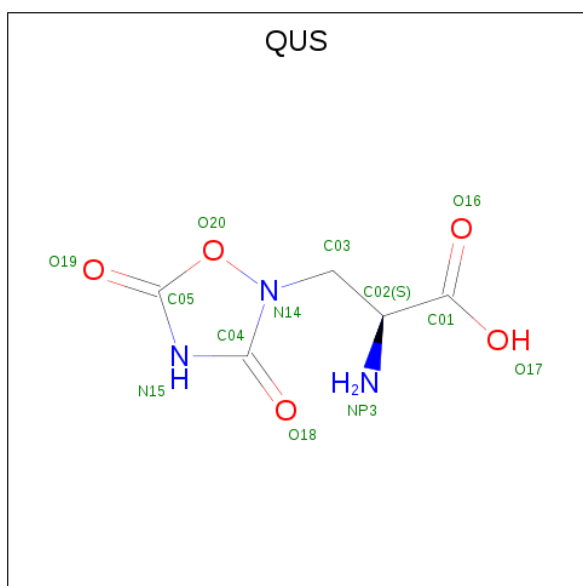
Chain	Residue	Modelled	Actual	Comment	Reference
A	1	GLY	-	CLONING ARTIFACT	UNP P19491
A	2	ALA	-	CLONING ARTIFACT	UNP P19491
A	118	GLY	-	LINKER	UNP P19491
A	119	THR	-	LINKER	UNP P19491
B	1	GLY	-	CLONING ARTIFACT	UNP P19491
B	2	ALA	-	CLONING ARTIFACT	UNP P19491
B	118	GLY	-	LINKER	UNP P19491
B	119	THR	-	LINKER	UNP P19491

- Molecule 2 is SULFATE ION (three-letter code: SO4) (formula: O₄S).



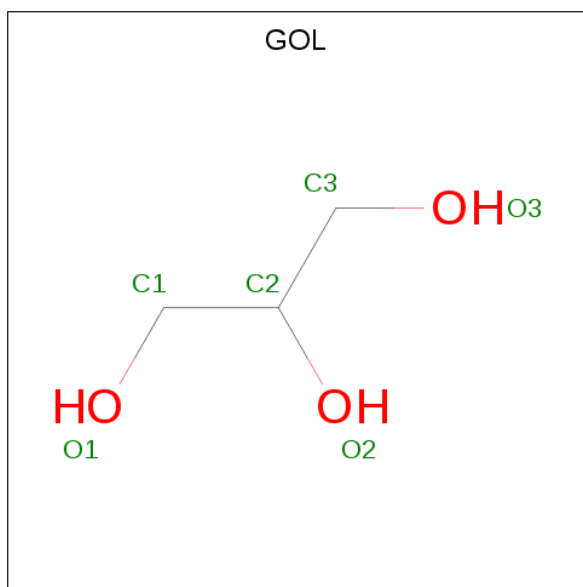
Mol	Chain	Residues	Atoms	ZeroOcc	AltConf
2	A	1	Total O S 5 4 1	0	0
2	B	1	Total O S 5 4 1	0	0
2	B	1	Total O S 5 4 1	0	0

- Molecule 3 is (S)-2-AMINO-3-(3,5-DIOXO-[1,2,4]OXADIAZOLIDIN-2-YL)-PROPIONIC ACID (three-letter code: QUS) (formula: C₅H₇N₃O₅).



Mol	Chain	Residues	Atoms				ZeroOcc	AltConf
3	A	1	Total	C	N	O	0	0
			13	5	3	5		
3	B	1	Total	C	N	O	0	0
			13	5	3	5		

- Molecule 4 is GLYCEROL (three-letter code: GOL) (formula: C₃H₈O₃).



Mol	Chain	Residues	Atoms			ZeroOcc	AltConf
4	A	1	Total	C	O	0	0
			6	3	3		
4	B	1	Total	C	O	0	0
			6	3	3		

- Molecule 5 is water.

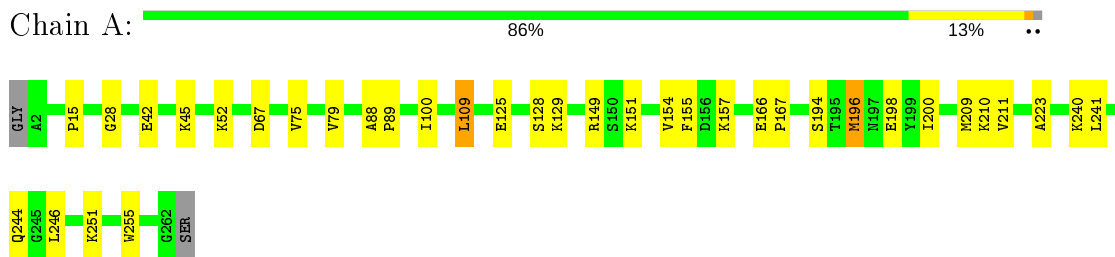
Mol	Chain	Residues	Atoms		ZeroOcc	AltConf
5	A	242	Total	O	0	0
			242	242		
5	B	200	Total	O	0	0
			200	200		

3 Residue-property plots [i](#)

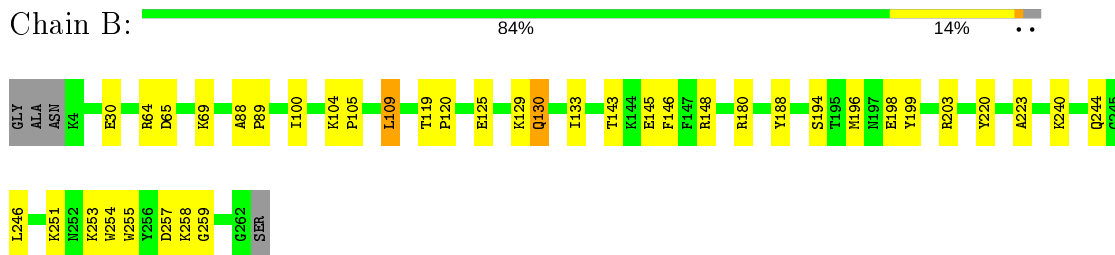
These plots are drawn for all protein, RNA and DNA chains in the entry. The first graphic for a chain summarises the proportions of the various outlier classes displayed in the second graphic. The second graphic shows the sequence view annotated by issues in geometry. Residues are color-coded according to the number of geometric quality criteria for which they contain at least one outlier: green = 0, yellow = 1, orange = 2 and red = 3 or more. Stretches of 2 or more consecutive residues without any outlier are shown as a green connector. Residues present in the sample, but not in the model, are shown in grey.

Note EDS was not executed.

- Molecule 1: GLUTAMATE RECEPTOR 2



- Molecule 1: GLUTAMATE RECEPTOR 2



4 Data and refinement statistics

Xtrriage (Phenix) and EDS were not executed - this section is therefore incomplete.

Property	Value	Source
Space group	P 21 21 2	Depositor
Cell constants a, b, c, α , β , γ	98.56Å 121.53Å 47.45Å 90.00° 90.00° 90.00°	Depositor
Resolution (Å)	29.41 – 2.15	Depositor
% Data completeness (in resolution range)	90.0 (29.41-2.15)	Depositor
R_{merge}	0.06	Depositor
R_{sym}	(Not available)	Depositor
Refinement program	CNS 1.0	Depositor
R, R_{free}	0.190 , 0.237	Depositor
Estimated twinning fraction	No twinning to report.	Xtrriage
Total number of atoms	4486	wwPDB-VP
Average B, all atoms (Å ²)	21.0	wwPDB-VP

5 Model quality [i](#)

5.1 Standard geometry [i](#)

Bond lengths and bond angles in the following residue types are not validated in this section: GOL, QUS, SO4

The Z score for a bond length (or angle) is the number of standard deviations the observed value is removed from the expected value. A bond length (or angle) with $|Z| > 5$ is considered an outlier worth inspection. RMSZ is the root-mean-square of all Z scores of the bond lengths (or angles).

Mol	Chain	Bond lengths		Bond angles	
		RMSZ	# Z >5	RMSZ	# Z >5
1	A	0.45	1/2025 (0.0%)	0.59	1/2730 (0.0%)
1	B	0.32	0/2038	0.55	0/2745
All	All	0.39	1/4063 (0.0%)	0.57	1/5475 (0.0%)

All (1) bond length outliers are listed below:

Mol	Chain	Res	Type	Atoms	Z	Observed(Å)	Ideal(Å)
1	A	149	ARG	NE-CZ	12.64	1.49	1.33

All (1) bond angle outliers are listed below:

Mol	Chain	Res	Type	Atoms	Z	Observed(°)	Ideal(°)
1	A	149	ARG	CD-NE-CZ	-8.92	111.12	123.60

There are no chirality outliers.

There are no planarity outliers.

5.2 Too-close contacts [i](#)

In the following table, the Non-H and H(model) columns list the number of non-hydrogen atoms and hydrogen atoms in the chain respectively. The H(added) column lists the number of hydrogen atoms added and optimized by MolProbity. The Clashes column lists the number of clashes within the asymmetric unit, whereas Symm-Clashes lists symmetry related clashes.

Mol	Chain	Non-H	H(model)	H(added)	Clashes	Symm-Clashes
1	A	1989	0	1965	20	0
1	B	2002	0	2006	31	0
2	A	5	0	0	0	0
2	B	10	0	0	0	0

Continued on next page...

Continued from previous page...

Mol	Chain	Non-H	H(model)	H(added)	Clashes	Symm-Clashes
3	A	13	0	6	0	0
3	B	13	0	6	0	0
4	A	6	0	8	0	0
4	B	6	0	8	4	0
5	A	242	0	0	2	0
5	B	200	0	0	3	0
All	All	4486	0	3999	51	0

The all-atom clashscore is defined as the number of clashes found per 1000 atoms (including hydrogen atoms). The all-atom clashscore for this structure is 6.

All (51) close contacts within the same asymmetric unit are listed below, sorted by their clash magnitude.

Atom-1	Atom-2	Interatomic distance (Å)	Clash overlap (Å)
1:B:130:GLN:HE22	1:B:133:ILE:H	0.97	0.95
1:B:130:GLN:NE2	1:B:133:ILE:H	1.65	0.93
1:B:130:GLN:HE22	1:B:133:ILE:N	1.74	0.84
1:B:194:SER:O	1:B:198:GLU:HG2	1.85	0.77
1:B:199:TYR:CZ	1:B:203:ARG:HD2	2.19	0.76
1:A:241:LEU:HD22	1:A:246:LEU:HD22	1.67	0.76
1:B:246:LEU:HD23	4:B:701:GOL:H31	1.70	0.74
1:A:194:SER:O	1:A:198:GLU:HG2	1.90	0.70
1:B:30:GLU:HG3	5:B:796:HOH:O	1.91	0.70
1:A:125:GLU:HG2	1:A:129:LYS:HE3	1.74	0.69
1:B:88:ALA:HB1	1:B:89:PRO:HD2	1.76	0.67
1:A:241:LEU:HD22	1:A:246:LEU:CD2	2.26	0.64
1:A:240:LYS:O	1:A:244:GLN:HG3	2.01	0.61
1:B:64:ARG:NH2	1:B:69:LYS:HD3	2.17	0.59
1:A:88:ALA:HB1	1:A:89:PRO:HD2	1.85	0.59
1:B:125:GLU:O	1:B:129:LYS:HG2	2.05	0.57
1:B:246:LEU:HB2	4:B:701:GOL:H12	1.87	0.57
1:A:210:LYS:HE2	5:A:881:HOH:O	2.06	0.55
1:B:104:LYS:HE3	5:B:837:HOH:O	2.08	0.54
1:B:109:LEU:C	1:B:109:LEU:HD22	2.29	0.53
1:B:65:ASP:O	1:B:69:LYS:HA	2.09	0.53
1:A:42:GLU:HG3	1:A:246:LEU:HD21	1.90	0.53
1:B:258:LYS:HG2	1:B:258:LYS:O	2.08	0.52
1:B:251:LYS:O	1:B:255:TRP:HB2	2.10	0.51
1:B:240:LYS:O	1:B:244:GLN:HG3	2.11	0.51
1:A:251:LYS:O	1:A:255:TRP:HB2	2.11	0.50
1:B:253:LYS:HA	1:B:257:ASP:OD2	2.12	0.49

Continued on next page...

Continued from previous page...

Atom-1	Atom-2	Interatomic distance (Å)	Clash overlap (Å)
1:A:128:SER:O	1:A:157:LYS:HE3	2.13	0.48
1:A:151:LYS:CG	5:A:829:HOH:O	2.61	0.48
1:B:105:PRO:HA	1:B:220:TYR:O	2.14	0.48
1:B:145:GLU:OE2	1:B:148:ARG:NH2	2.46	0.47
1:A:28:GLY:HA2	1:A:52:LYS:NZ	2.29	0.47
1:A:209:MET:CE	1:A:211:VAL:HG12	2.46	0.46
1:B:246:LEU:HD23	4:B:701:GOL:C3	2.44	0.46
1:B:257:ASP:O	1:B:258:LYS:HB3	2.16	0.45
1:B:246:LEU:HB2	4:B:701:GOL:C1	2.45	0.45
1:B:119:THR:HA	1:B:120:PRO:HD3	1.79	0.43
1:B:109:LEU:N	1:B:109:LEU:HD13	2.34	0.43
1:B:253:LYS:HE3	1:B:254:TRP:CZ2	2.53	0.43
1:A:109:LEU:HD22	1:A:109:LEU:C	2.40	0.42
1:A:75:VAL:O	1:A:79:VAL:HG23	2.20	0.42
1:B:180:ARG:HG2	1:B:188:TYR:CD2	2.55	0.41
1:B:100:ILE:HD12	1:B:223:ALA:HB1	2.02	0.41
1:B:253:LYS:HE3	1:B:254:TRP:CE2	2.55	0.41
1:A:166:GLU:HA	1:A:167:PRO:C	2.41	0.41
1:A:154:VAL:HG13	1:A:155:PHE:N	2.35	0.41
1:A:196:MET:O	1:A:200:ILE:HG12	2.21	0.41
1:B:180:ARG:NH1	5:B:770:HOH:O	2.54	0.41
1:A:100:ILE:HD12	1:A:223:ALA:HB1	2.03	0.40
1:A:209:MET:HE1	1:A:211:VAL:HG12	2.02	0.40
1:B:143:THR:O	1:B:146:PHE:HB3	2.21	0.40

There are no symmetry-related clashes.

5.3 Torsion angles [i](#)

5.3.1 Protein backbone [i](#)

In the following table, the Percentiles column shows the percent Ramachandran outliers of the chain as a percentile score with respect to all X-ray entries followed by that with respect to entries of similar resolution.

The Analysed column shows the number of residues for which the backbone conformation was analysed, and the total number of residues.

Mol	Chain	Analysed	Favoured	Allowed	Outliers	Percentiles
1	A	259/263 (98%)	252 (97%)	6 (2%)	1 (0%)	34 29

Continued on next page...

Continued from previous page...

Mol	Chain	Analysed	Favoured	Allowed	Outliers	Percentiles	
1	B	257/263 (98%)	247 (96%)	9 (4%)	1 (0%)	34	29
All	All	516/526 (98%)	499 (97%)	15 (3%)	2 (0%)	34	29

All (2) Ramachandran outliers are listed below:

Mol	Chain	Res	Type
1	A	67	ASP
1	B	259	GLY

5.3.2 Protein sidechains [i](#)

In the following table, the Percentiles column shows the percent sidechain outliers of the chain as a percentile score with respect to all X-ray entries followed by that with respect to entries of similar resolution.

The Analysed column shows the number of residues for which the sidechain conformation was analysed, and the total number of residues.

Mol	Chain	Analysed	Rotameric	Outliers	Percentiles	
1	A	207/219 (94%)	203 (98%)	4 (2%)	57	61
1	B	212/219 (97%)	209 (99%)	3 (1%)	67	72
All	All	419/438 (96%)	412 (98%)	7 (2%)	60	65

All (7) residues with a non-rotameric sidechain are listed below:

Mol	Chain	Res	Type
1	A	15	PRO
1	A	45	LYS
1	A	109	LEU
1	A	196	MET
1	B	109	LEU
1	B	130	GLN
1	B	196	MET

Some sidechains can be flipped to improve hydrogen bonding and reduce clashes. All (2) such sidechains are listed below:

Mol	Chain	Res	Type
1	A	23	HIS
1	B	130	GLN

5.3.3 RNA [i](#)

There are no RNA molecules in this entry.

5.4 Non-standard residues in protein, DNA, RNA chains [i](#)

There are no non-standard protein/DNA/RNA residues in this entry.

5.5 Carbohydrates [i](#)

There are no carbohydrates in this entry.

5.6 Ligand geometry [i](#)

7 ligands are modelled in this entry.

In the following table, the Counts columns list the number of bonds (or angles) for which Mogul statistics could be retrieved, the number of bonds (or angles) that are observed in the model and the number of bonds (or angles) that are defined in the Chemical Component Dictionary. The Link column lists molecule types, if any, to which the group is linked. The Z score for a bond length (or angle) is the number of standard deviations the observed value is removed from the expected value. A bond length (or angle) with $|Z| > 2$ is considered an outlier worth inspection. RMSZ is the root-mean-square of all Z scores of the bond lengths (or angles).

Mol	Type	Chain	Res	Link	Bond lengths			Bond angles		
					Counts	RMSZ	$\# Z > 2$	Counts	RMSZ	$\# Z > 2$
2	SO4	A	600	-	4,4,4	0.76	0	6,6,6	0.57	0
3	QUS	A	500	-	4,13,13	1.25	0	0,18,18	0.00	-
3	QUS	B	501	-	4,13,13	1.28	0	0,18,18	0.00	-
4	GOL	A	700	-	5,5,5	0.94	0	5,5,5	0.26	0
2	SO4	B	601	-	4,4,4	0.80	0	6,6,6	0.59	0
4	GOL	B	701	-	5,5,5	1.04	0	5,5,5	0.30	0
2	SO4	B	602	-	4,4,4	0.78	0	6,6,6	0.56	0

In the following table, the Chirals column lists the number of chiral outliers, the number of chiral centers analysed, the number of these observed in the model and the number defined in the Chemical Component Dictionary. Similar counts are reported in the Torsion and Rings columns. '-' means no outliers of that kind were identified.

Mol	Type	Chain	Res	Link	Chirals	Torsions	Rings
4	GOL	B	701	-	-	4/4/4/4	-
3	QUS	B	501	-	-	2/2/8/8	0/1/1/1
4	GOL	A	700	-	-	4/4/4/4	-

Continued on next page...

Continued from previous page...

Mol	Type	Chain	Res	Link	Chirals	Torsions	Rings
3	QUS	A	500	-	-	2/2/8/8	0/1/1/1

There are no bond length outliers.

There are no bond angle outliers.

There are no chirality outliers.

All (12) torsion outliers are listed below:

Mol	Chain	Res	Type	Atoms
3	A	500	QUS	C01-C02-C03-N14
3	B	501	QUS	C01-C02-C03-N14
4	A	700	GOL	O1-C1-C2-C3
4	A	700	GOL	C1-C2-C3-O3
4	A	700	GOL	O2-C2-C3-O3
4	B	701	GOL	O1-C1-C2-C3
4	B	701	GOL	C1-C2-C3-O3
4	A	700	GOL	O1-C1-C2-O2
4	B	701	GOL	O1-C1-C2-O2
4	B	701	GOL	O2-C2-C3-O3
3	A	500	QUS	NP3-C02-C03-N14
3	B	501	QUS	NP3-C02-C03-N14

There are no ring outliers.

1 monomer is involved in 4 short contacts:

Mol	Chain	Res	Type	Clashes	Symm-Clashes
4	B	701	GOL	4	0

5.7 Other polymers [i](#)

There are no such residues in this entry.

5.8 Polymer linkage issues [i](#)

There are no chain breaks in this entry.

6 Fit of model and data

6.1 Protein, DNA and RNA chains

EDS was not executed - this section is therefore empty.

6.2 Non-standard residues in protein, DNA, RNA chains

EDS was not executed - this section is therefore empty.

6.3 Carbohydrates

EDS was not executed - this section is therefore empty.

6.4 Ligands

EDS was not executed - this section is therefore empty.

6.5 Other polymers

EDS was not executed - this section is therefore empty.