



Full wwPDB X-ray Structure Validation Report ⓘ

Aug 30, 2023 – 02:41 AM EDT

PDB ID : 3MJG
Title : The structure of a platelet derived growth factor receptor complex
Authors : Shim, A.H.R.; He, X.
Deposited on : 2010-04-12
Resolution : 2.30 Å(reported)

This is a Full wwPDB X-ray Structure Validation Report for a publicly released PDB entry.

We welcome your comments at validation@mail.wwpdb.org

A user guide is available at

<https://www.wwpdb.org/validation/2017/XrayValidationReportHelp>

with specific help available everywhere you see the ⓘ symbol.

The types of validation reports are described at

<http://www.wwpdb.org/validation/2017/FAQs#types>.

The following versions of software and data (see [references ⓘ](#)) were used in the production of this report:

MolProbity : 4.02b-467
Mogul : 1.8.5 (274361), CSD as541be (2020)
Xtrriage (Phenix) : 1.13
EDS : 2.35
Percentile statistics : 20191225.v01 (using entries in the PDB archive December 25th 2019)
Refmac : 5.8.0158
CCP4 : 7.0.044 (Gargrove)
Ideal geometry (proteins) : Engh & Huber (2001)
Ideal geometry (DNA, RNA) : Parkinson et al. (1996)
Validation Pipeline (wwPDB-VP) : 2.35

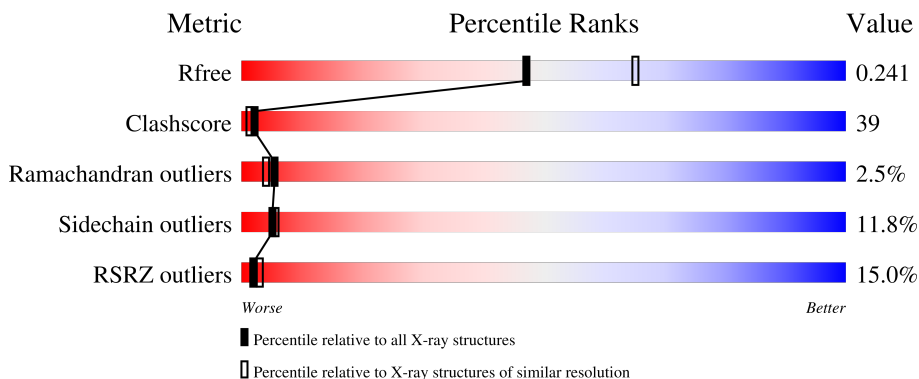
1 Overall quality at a glance

The following experimental techniques were used to determine the structure:

X-RAY DIFFRACTION

The reported resolution of this entry is 2.30 Å.

Percentile scores (ranging between 0-100) for global validation metrics of the entry are shown in the following graphic. The table shows the number of entries on which the scores are based.



Metric	Whole archive (#Entries)	Similar resolution (#Entries, resolution range(Å))
R_{free}	130704	5042 (2.30-2.30)
Clashscore	141614	5643 (2.30-2.30)
Ramachandran outliers	138981	5575 (2.30-2.30)
Sidechain outliers	138945	5575 (2.30-2.30)
RSRZ outliers	127900	4938 (2.30-2.30)

The table below summarises the geometric issues observed across the polymeric chains and their fit to the electron density. The red, orange, yellow and green segments of the lower bar indicate the fraction of residues that contain outliers for ≥ 3 , 2, 1 and 0 types of geometric quality criteria respectively. A grey segment represents the fraction of residues that are not modelled. The numeric value for each fraction is indicated below the corresponding segment, with a dot representing fractions $\leq 5\%$. The upper red bar (where present) indicates the fraction of residues that have poor fit to the electron density. The numeric value is given above the bar.

Mol	Chain	Length	Quality of chain
1	A	172	 2% (red), 30% (green), 22% (yellow), 5% (orange), 44% (grey)
1	B	172	 % (red), 38% (green), 15% (yellow), 5% (orange), 41% (grey)
2	X	289	 % (red), 43% (green), 43% (yellow), 8% (orange), 5% (grey)
2	Y	289	 37% (red), 39% (green), 46% (yellow), 9% (orange), 6% (grey)

The following table lists non-polymeric compounds, carbohydrate monomers and non-standard

residues in protein, DNA, RNA chains that are outliers for geometric or electron-density-fit criteria:

Mol	Type	Chain	Res	Chirality	Geometry	Clashes	Electron density
4	NAG	X	3	X	-	-	-
4	NAG	X	5	X	-	-	-
4	NAG	X	7	X	-	-	X
4	NAG	Y	1	X	-	-	-
4	NAG	Y	4	-	-	-	X
4	NAG	Y	5	X	-	-	-
4	NAG	Y	6	-	-	-	X
4	NAG	Y	7	-	-	-	X

2 Entry composition [i](#)

There are 5 unique types of molecules in this entry. The entry contains 7254 atoms, of which 0 are hydrogens and 0 are deuteriums.

In the tables below, the ZeroOcc column contains the number of atoms modelled with zero occupancy, the AltConf column contains the number of residues with at least one atom in alternate conformation and the Trace column contains the number of residues modelled with at most 2 atoms.

- Molecule 1 is a protein called Platelet-derived growth factor subunit B.

Mol	Chain	Residues	Atoms					ZeroOcc	AltConf	Trace
			Total	C	N	O	S			
1	A	97	776	483	147	137	9	0	0	0
1	B	101	802	500	151	142	9	0	0	0

There are 14 discrepancies between the modelled and reference sequences:

Chain	Residue	Modelled	Actual	Comment	Reference
A	105	HIS	-	expression tag	UNP P01127
A	106	HIS	-	expression tag	UNP P01127
A	107	HIS	-	expression tag	UNP P01127
A	108	HIS	-	expression tag	UNP P01127
A	109	HIS	-	expression tag	UNP P01127
A	110	HIS	-	expression tag	UNP P01127
A	111	HIS	-	expression tag	UNP P01127
B	105	HIS	-	expression tag	UNP P01127
B	106	HIS	-	expression tag	UNP P01127
B	107	HIS	-	expression tag	UNP P01127
B	108	HIS	-	expression tag	UNP P01127
B	109	HIS	-	expression tag	UNP P01127
B	110	HIS	-	expression tag	UNP P01127
B	111	HIS	-	expression tag	UNP P01127

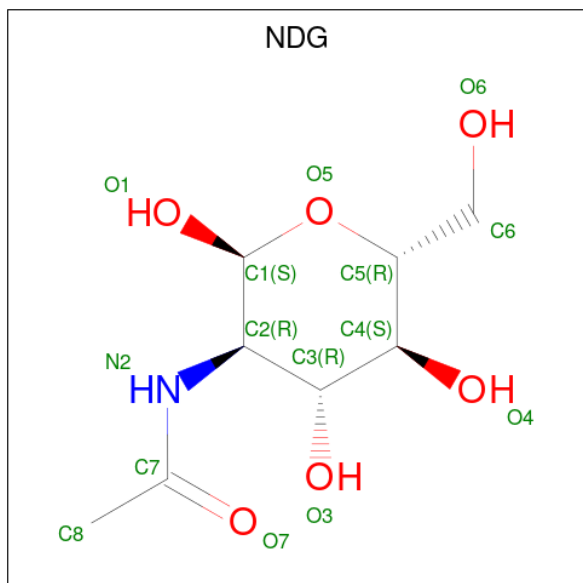
- Molecule 2 is a protein called Beta-type platelet-derived growth factor receptor.

Mol	Chain	Residues	Atoms					ZeroOcc	AltConf	Trace
			Total	C	N	O	S			
2	X	274	2159	1367	352	430	10	0	0	0
2	Y	273	2151	1361	351	429	10	0	0	0

There are 14 discrepancies between the modelled and reference sequences:

Chain	Residue	Modelled	Actual	Comment	Reference
X	315	HIS	-	expression tag	UNP P09619
X	316	HIS	-	expression tag	UNP P09619
X	317	HIS	-	expression tag	UNP P09619
X	318	HIS	-	expression tag	UNP P09619
X	319	HIS	-	expression tag	UNP P09619
X	320	HIS	-	expression tag	UNP P09619
X	321	HIS	-	expression tag	UNP P09619
Y	315	HIS	-	expression tag	UNP P09619
Y	316	HIS	-	expression tag	UNP P09619
Y	317	HIS	-	expression tag	UNP P09619
Y	318	HIS	-	expression tag	UNP P09619
Y	319	HIS	-	expression tag	UNP P09619
Y	320	HIS	-	expression tag	UNP P09619
Y	321	HIS	-	expression tag	UNP P09619

- Molecule 3 is 2-acetamido-2-deoxy-alpha-D-glucopyranose (three-letter code: NDG) (formula: C₈H₁₅NO₆).



Mol	Chain	Residues	Atoms				ZeroOcc	AltConf
			Total	C	N	O		
3	X	1	14	8	1	5	0	0

- Molecule 4 is 2-acetamido-2-deoxy-beta-D-glucopyranose (three-letter code: NAG) (formula: C₈H₁₅NO₆).



Mol	Chain	Residues	Atoms				ZeroOcc	AltConf
			Total	C	N	O		
4	X	1	Total 14	8	1	5	0	0
4	X	1	Total 14	8	1	5	0	0
4	X	1	Total 14	8	1	5	0	0
4	X	1	Total 14	8	1	5	0	0
4	X	1	Total 14	8	1	5	0	0
4	X	1	Total 14	8	1	5	0	0
4	Y	1	Total 14	8	1	5	0	0
4	Y	1	Total 14	8	1	5	0	0
4	Y	1	Total 14	8	1	5	0	0
4	Y	1	Total 14	8	1	5	0	0
4	Y	1	Total 14	8	1	5	0	0
4	Y	1	Total 14	8	1	5	0	0
4	Y	1	Total 14	8	1	5	0	0


- Molecule 5 is water.

Mol	Chain	Residues	Atoms		ZeroOcc	AltConf
5	A	204	Total 204	O 204	0	0
5	B	188	Total 188	O 188	0	0
5	X	386	Total 386	O 386	0	0
5	Y	392	Total 392	O 392	0	0

3 Residue-property plots

These plots are drawn for all protein, RNA, DNA and oligosaccharide chains in the entry. The first graphic for a chain summarises the proportions of the various outlier classes displayed in the second graphic. The second graphic shows the sequence view annotated by issues in geometry and electron density. Residues are color-coded according to the number of geometric quality criteria for which they contain at least one outlier: green = 0, yellow = 1, orange = 2 and red = 3 or more. A red dot above a residue indicates a poor fit to the electron density ($RSRZ > 2$). Stretches of 2 or more consecutive residues without any outlier are shown as a green connector. Residues present in the sample, but not in the model, are shown in grey.

- Molecule 1: Platelet-derived growth factor subunit B

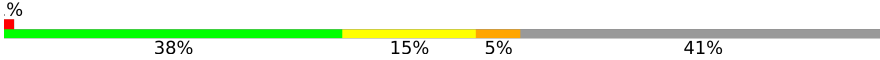
Chain A: 



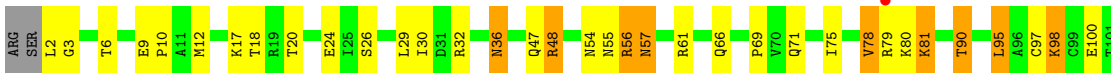




- Molecule 1: Platelet-derived growth factor subunit B

Chain B: 





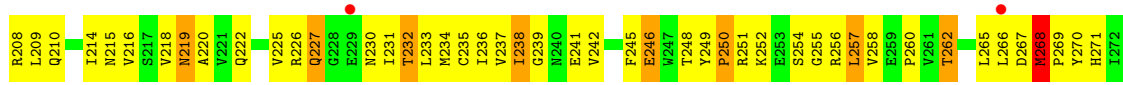


- Molecule 2: Beta-type platelet-derived growth factor receptor

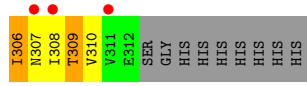
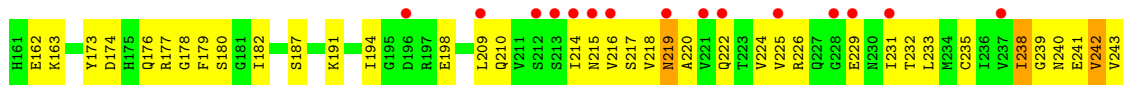
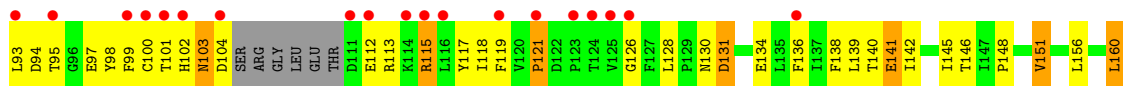
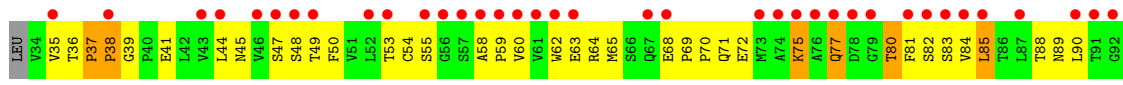
Chain X: 







● Molecule 2: Beta-type platelet-derived growth factor receptor



4 Data and refinement statistics

Property	Value	Source
Space group	P 21 21 21	Depositor
Cell constants a, b, c, α , β , γ	78.47Å 116.82Å 134.15Å 90.00° 90.00° 90.00°	Depositor
Resolution (Å)	44.24 – 2.30 44.23 – 2.20	Depositor EDS
% Data completeness (in resolution range)	98.9 (44.24-2.30) 98.6 (44.23-2.20)	Depositor EDS
R_{merge}	0.08	Depositor
R_{sym}	0.06	Depositor
$\langle I/\sigma(I) \rangle$ ¹	2.32 (at 2.20Å)	Xtrriage
Refinement program	CNS 1.1	Depositor
R, R_{free}	0.237 , 0.277 0.242 , 0.241	Depositor DCC
R_{free} test set	3172 reflections (5.08%)	wwPDB-VP
Wilson B-factor (Å ²)	44.9	Xtrriage
Anisotropy	0.167	Xtrriage
Bulk solvent k_{sol} (e/Å ³), B_{sol} (Å ²)	0.29 , 71.1	EDS
L-test for twinning ²	$\langle L \rangle = 0.48$, $\langle L^2 \rangle = 0.31$	Xtrriage
Estimated twinning fraction	No twinning to report.	Xtrriage
F_o, F_c correlation	0.94	EDS
Total number of atoms	7254	wwPDB-VP
Average B, all atoms (Å ²)	66.0	wwPDB-VP

Xtrriage's analysis on translational NCS is as follows: *The largest off-origin peak in the Patterson function is 3.60% of the height of the origin peak. No significant pseudotranslation is detected.*

¹Intensities estimated from amplitudes.

²Theoretical values of $\langle |L| \rangle$, $\langle L^2 \rangle$ for acentric reflections are 0.5, 0.333 respectively for untwinned datasets, and 0.375, 0.2 for perfectly twinned datasets.

5 Model quality [i](#)

5.1 Standard geometry [i](#)

Bond lengths and bond angles in the following residue types are not validated in this section: NDG, NAG

The Z score for a bond length (or angle) is the number of standard deviations the observed value is removed from the expected value. A bond length (or angle) with $|Z| > 5$ is considered an outlier worth inspection. RMSZ is the root-mean-square of all Z scores of the bond lengths (or angles).

Mol	Chain	Bond lengths		Bond angles	
		RMSZ	# Z >5	RMSZ	# Z >5
1	A	0.54	0/787	0.79	0/1064
1	B	0.60	0/813	0.86	0/1099
2	X	0.47	0/2205	0.76	1/3013 (0.0%)
2	Y	0.37	0/2197	0.64	0/3002
All	All	0.47	0/6002	0.74	1/8178 (0.0%)

There are no bond length outliers.

All (1) bond angle outliers are listed below:

Mol	Chain	Res	Type	Atoms	Z	Observed(°)	Ideal(°)
2	X	209	LEU	CA-CB-CG	5.24	127.36	115.30

There are no chirality outliers.

There are no planarity outliers.

5.2 Too-close contacts [i](#)

In the following table, the Non-H and H(model) columns list the number of non-hydrogen atoms and hydrogen atoms in the chain respectively. The H(added) column lists the number of hydrogen atoms added and optimized by MolProbity. The Clashes column lists the number of clashes within the asymmetric unit, whereas Symm-Clashes lists symmetry-related clashes.

Mol	Chain	Non-H	H(model)	H(added)	Clashes	Symm-Clashes
1	A	776	0	803	64	0
1	B	802	0	833	47	0
2	X	2159	0	2088	165	0
2	Y	2151	0	2077	220	0
3	X	14	0	12	0	0
4	X	84	0	78	10	0

Continued on next page...

Continued from previous page...

Mol	Chain	Non-H	H(model)	H(added)	Clashes	Symm-Clashes
4	Y	98	0	91	13	0
5	A	204	0	0	15	0
5	B	188	0	0	11	0
5	X	386	0	0	33	0
5	Y	392	0	0	44	0
All	All	7254	0	5982	476	0

The all-atom clashscore is defined as the number of clashes found per 1000 atoms (including hydrogen atoms). The all-atom clashscore for this structure is 39.

All (476) close contacts within the same asymmetric unit are listed below, sorted by their clash magnitude.

Atom-1	Atom-2	Interatomic distance (Å)	Clash overlap (Å)
1:A:43:CYS:HB2	5:B:550:HOH:O	1.45	1.15
1:B:20:THR:HG22	1:B:47:GLN:HE22	1.11	1.08
2:X:268:MET:HB3	2:X:269:PRO:HD3	1.34	1.08
2:Y:268:MET:HB3	2:Y:269:PRO:HD3	1.37	1.04
1:A:49:CYS:HB2	5:A:553:HOH:O	1.58	1.01
2:Y:219:ASN:ND2	2:Y:220:ALA:H	1.61	0.98
2:X:219:ASN:HD22	2:X:220:ALA:N	1.62	0.98
2:X:268:MET:HB3	2:X:269:PRO:CD	1.95	0.96
1:A:40:TRP:HH2	1:B:54:ASN:HB2	1.31	0.95
2:X:219:ASN:ND2	2:X:220:ALA:H	1.68	0.92
2:Y:300:HIS:HB3	5:Y:13:HOH:O	1.69	0.91
2:Y:115:ARG:HH11	2:Y:115:ARG:HB2	1.34	0.91
1:A:40:TRP:CH2	1:B:54:ASN:HB2	2.06	0.90
1:B:36:ASN:HD22	1:B:36:ASN:H	1.16	0.88
2:Y:131:ASP:HB2	2:Y:134:GLU:HG2	1.56	0.86
2:Y:250:PRO:HA	5:Y:1224:HOH:O	1.75	0.86
2:Y:104:ASP:HA	5:Y:681:HOH:O	1.75	0.85
2:Y:88:THR:HA	5:Y:958:HOH:O	1.75	0.84
1:B:56:ARG:H	1:B:56:ARG:HD2	1.41	0.84
2:X:248:THR:CG2	2:X:290:THR:HB	2.08	0.83
1:A:12:MET:HG3	5:A:708:HOH:O	1.80	0.82
2:X:97:GLU:OE2	2:X:115:ARG:NH1	2.14	0.81
1:A:98:LYS:HD2	5:A:584:HOH:O	1.81	0.81
2:Y:136:PHE:HB3	2:Y:138:PHE:HE1	1.45	0.80
2:X:219:ASN:HD22	2:X:220:ALA:H	0.85	0.80
2:Y:288:THR:HG23	4:Y:7:NAG:HN2	1.46	0.80
2:Y:265:LEU:HD12	2:Y:271:HIS:HB3	1.64	0.79
1:A:36:ASN:HA	2:Y:242:VAL:HG23	1.63	0.79

Continued on next page...

Continued from previous page...

Atom-1	Atom-2	Interatomic distance (Å)	Clash overlap (Å)
2:Y:219:ASN:HD22	2:Y:220:ALA:H	1.30	0.79
2:Y:292:ASN:ND2	4:Y:6:NAG:H62	1.97	0.79
2:Y:126:GLY:HA2	2:Y:194:ILE:CD1	2.14	0.78
2:Y:140:THR:HG23	2:Y:297:VAL:CG1	2.15	0.77
2:Y:268:MET:HB3	2:Y:269:PRO:CD	2.13	0.77
2:Y:136:PHE:HB3	2:Y:138:PHE:CE1	2.20	0.77
2:X:248:THR:HG23	2:X:290:THR:HB	1.67	0.76
2:X:64:ARG:HG2	2:X:64:ARG:HH11	1.49	0.76
2:Y:295:GLU:OE1	2:Y:298:ASN:HB2	1.85	0.76
1:A:57:ASN:HB3	5:A:848:HOH:O	1.85	0.75
2:X:37:PRO:HD3	5:X:654:HOH:O	1.87	0.74
2:Y:295:GLU:HB2	5:Y:325:HOH:O	1.87	0.73
2:Y:231:ILE:HB	2:Y:278:ILE:HB	1.70	0.73
1:B:56:ARG:H	1:B:56:ARG:CD	2.02	0.73
1:B:2:LEU:HD12	1:B:3:GLY:H	1.55	0.72
2:Y:301:GLN:HG3	4:Y:6:NAG:O7	1.90	0.72
1:B:55:ASN:HA	1:B:56:ARG:NH1	2.04	0.72
2:X:69:PRO:O	2:X:71:GLN:HG3	1.89	0.71
2:X:214:ILE:HG23	2:X:237:VAL:HG21	1.73	0.71
2:X:182:ILE:HD12	2:X:182:ILE:O	1.90	0.71
2:X:227:GLN:HB2	5:X:328:HOH:O	1.90	0.70
2:Y:226:ARG:HD2	5:Y:1214:HOH:O	1.90	0.70
2:Y:286:SER:HA	2:Y:308:ILE:O	1.90	0.70
1:A:30:ILE:HD12	1:A:39:VAL:HG11	1.73	0.70
1:B:48:ARG:HG2	5:B:113:HOH:O	1.91	0.69
2:X:248:THR:HG22	5:X:704:HOH:O	1.90	0.69
2:X:214:ILE:HD11	2:X:295:GLU:HG3	1.74	0.69
2:Y:102:HIS:HB3	4:Y:3:NAG:H82	1.74	0.69
1:A:30:ILE:HD12	1:A:39:VAL:CG1	2.22	0.69
2:Y:268:MET:CB	2:Y:269:PRO:HD3	2.17	0.69
2:Y:215:ASN:HA	2:Y:302:ASP:OD2	1.93	0.69
2:Y:283:LEU:C	2:Y:285:ASP:H	1.97	0.69
1:B:36:ASN:HA	2:X:242:VAL:HG23	1.75	0.69
2:Y:273:ARG:HD3	2:Y:275:ILE:HG22	1.74	0.69
2:X:85:LEU:HD23	2:X:85:LEU:H	1.59	0.68
2:Y:219:ASN:ND2	2:Y:220:ALA:N	2.37	0.68
2:Y:68:GLU:HB2	2:Y:71:GLN:NE2	2.09	0.68
1:A:68:ARG:HD2	1:B:9:GLU:OE2	1.93	0.68
1:B:20:THR:HG22	1:B:47:GLN:NE2	1.97	0.68
2:X:126:GLY:HA2	2:X:194:ILE:CD1	2.24	0.67
1:A:36:ASN:CA	2:Y:242:VAL:HG23	2.25	0.67

Continued on next page...

Continued from previous page...

Atom-1	Atom-2	Interatomic distance (Å)	Clash overlap (Å)
2:Y:75:LYS:HD2	2:Y:75:LYS:O	1.96	0.66
1:A:28:ARG:HG3	1:A:32:ARG:NH1	2.09	0.66
1:B:29:LEU:HD12	1:B:30:ILE:HD12	1.78	0.65
2:Y:173:TYR:CE1	2:Y:178:GLY:HA2	2.31	0.65
1:A:101:THR:HG22	5:A:661:HOH:O	1.96	0.65
2:X:266:LEU:HD23	5:X:388:HOH:O	1.97	0.65
1:A:40:TRP:NE1	2:Y:136:PHE:CE2	2.65	0.65
2:X:214:ILE:HD11	2:X:295:GLU:CG	2.26	0.65
2:Y:198:GLU:HB3	5:Y:1317:HOH:O	1.96	0.65
1:A:36:ASN:C	2:Y:242:VAL:HG23	2.18	0.64
2:X:52:LEU:HB2	2:X:85:LEU:HD21	1.79	0.64
2:X:76:ALA:HA	5:X:1171:HOH:O	1.98	0.64
2:X:64:ARG:HH11	2:X:64:ARG:CG	2.09	0.64
2:Y:163:LYS:HB2	2:Y:187:SER:OG	1.97	0.64
2:Y:115:ARG:HB2	2:Y:115:ARG:NH1	2.10	0.63
2:Y:216:VAL:O	2:Y:304:LYS:HG3	1.97	0.63
1:B:36:ASN:H	1:B:36:ASN:ND2	1.94	0.63
2:X:257:LEU:HD12	5:X:1134:HOH:O	1.97	0.63
2:Y:68:GLU:HB3	5:Y:659:HOH:O	1.97	0.63
2:X:194:ILE:HG21	5:X:936:HOH:O	1.97	0.63
2:Y:249:TYR:CD1	2:Y:249:TYR:N	2.67	0.62
1:A:78:VAL:O	1:A:81:LYS:HG2	1.99	0.62
2:X:218:VAL:HA	2:X:234:MET:O	1.99	0.62
2:X:288:THR:HG21	4:X:7:NAG:H82	1.81	0.62
2:X:292:ASN:ND2	4:X:6:NAG:H62	2.15	0.62
4:X:4:NAG:H62	5:X:399:HOH:O	1.99	0.62
1:B:56:ARG:HG3	2:Y:270:TYR:HE1	1.63	0.62
2:X:210:GLN:HG2	5:X:930:HOH:O	2.00	0.62
2:Y:209:LEU:HD12	5:Y:599:HOH:O	1.99	0.62
2:X:35:VAL:HG13	5:X:383:HOH:O	1.98	0.62
2:Y:141:GLU:HG3	5:Y:1113:HOH:O	2.00	0.62
2:Y:126:GLY:HA2	2:Y:194:ILE:HD11	1.81	0.62
1:A:80:LYS:O	1:A:80:LYS:HD3	2.00	0.61
2:X:283:LEU:C	2:X:285:ASP:H	2.04	0.61
2:Y:35:VAL:O	2:Y:54:CYS:HA	2.01	0.61
1:A:38:LEU:HD11	2:Y:209:LEU:CD1	2.29	0.61
2:Y:224:VAL:HG22	2:Y:309:THR:CG2	2.30	0.61
4:Y:4:NAG:H61	5:Y:504:HOH:O	2.00	0.61
4:Y:7:NAG:O3	4:Y:7:NAG:H83	2.01	0.61
1:B:32:ARG:O	2:X:262:THR:HG22	1.99	0.61
1:A:30:ILE:HD11	1:A:72:VAL:HG21	1.82	0.61

Continued on next page...

Continued from previous page...

Atom-1	Atom-2	Interatomic distance (Å)	Clash overlap (Å)
2:Y:48:SER:O	2:Y:90:LEU:HG	2.00	0.61
2:Y:49:THR:HA	5:Y:958:HOH:O	2.00	0.61
2:Y:97:GLU:HG2	2:Y:115:ARG:NH1	2.15	0.61
5:A:797:HOH:O	2:X:267:ASP:HB2	1.99	0.60
2:X:60:VAL:O	2:X:73:MET:HE3	2.00	0.60
2:Y:241:GLU:HG3	2:Y:270:TYR:CZ	2.37	0.60
2:Y:292:ASN:OD1	2:Y:301:GLN:NE2	2.35	0.60
2:X:297:VAL:HG12	2:X:298:ASN:OD1	2.01	0.59
2:Y:97:GLU:HB3	2:Y:99:PHE:CE1	2.37	0.59
2:X:270:TYR:HD1	5:X:930:HOH:O	1.84	0.59
2:Y:97:GLU:HG2	2:Y:115:ARG:HH12	1.65	0.59
2:Y:248:THR:CG2	2:Y:290:THR:HB	2.32	0.59
1:A:40:TRP:HH2	1:B:54:ASN:CB	2.12	0.59
2:X:288:THR:HG23	4:X:7:NAG:HN2	1.67	0.59
2:Y:283:LEU:O	2:Y:285:ASP:N	2.35	0.59
2:Y:294:THR:HG23	5:Y:682:HOH:O	2.01	0.59
1:A:70:VAL:HG22	1:A:89:VAL:HG13	1.85	0.59
2:Y:119:PHE:O	2:Y:121:PRO:HD3	2.03	0.58
2:Y:210:GLN:HB3	2:Y:241:GLU:HB2	1.84	0.58
2:Y:99:PHE:CE2	2:Y:115:ARG:HB3	2.39	0.58
2:Y:238:ILE:HD12	2:Y:271:HIS:NE2	2.19	0.58
2:Y:265:LEU:HB2	2:Y:271:HIS:HB2	1.84	0.58
1:A:12:MET:HE2	5:A:708:HOH:O	2.03	0.58
2:X:266:LEU:HB3	5:X:388:HOH:O	2.04	0.58
2:Y:209:LEU:HB3	5:Y:599:HOH:O	2.04	0.58
2:Y:288:THR:OG1	4:Y:7:NAG:H3	2.03	0.58
2:X:102:HIS:O	4:X:3:NAG:H82	2.03	0.57
2:Y:306:ILE:N	2:Y:306:ILE:HD13	2.19	0.57
4:Y:5:NAG:H2	5:Y:809:HOH:O	2.03	0.57
1:B:55:ASN:HA	1:B:56:ARG:HH11	1.69	0.57
2:Y:139:LEU:O	2:Y:209:LEU:HD23	2.03	0.57
1:B:36:ASN:HD22	1:B:36:ASN:N	1.89	0.57
1:B:100:GLU:HG3	5:B:950:HOH:O	2.03	0.57
2:Y:219:ASN:HD22	2:Y:220:ALA:N	1.99	0.57
1:A:47:GLN:O	1:A:48:ARG:HD3	2.03	0.57
2:X:187:SER:HB3	2:X:205:TYR:CD2	2.40	0.57
2:Y:54:CYS:HB2	2:Y:62:TRP:CZ2	2.40	0.56
1:A:73:ARG:HH12	2:Y:136:PHE:HE1	1.53	0.56
2:X:238:ILE:HD12	2:X:271:HIS:CE1	2.40	0.56
2:Y:41:GLU:HB3	5:Y:1191:HOH:O	2.05	0.56
2:Y:218:VAL:HG22	2:Y:304:LYS:HB3	1.86	0.56

Continued on next page...

Continued from previous page...

Atom-1	Atom-2	Interatomic distance (Å)	Clash overlap (Å)
1:B:10:PRO:O	1:B:12:MET:HE2	2.04	0.56
2:Y:85:LEU:N	2:Y:85:LEU:HD23	2.21	0.56
2:X:52:LEU:HB2	2:X:85:LEU:CD2	2.35	0.56
2:Y:283:LEU:HD22	5:Y:348:HOH:O	2.05	0.56
1:A:78:VAL:O	1:A:78:VAL:HG13	2.06	0.55
2:X:183:PHE:O	2:X:208:ARG:NH2	2.39	0.55
2:X:187:SER:HB3	2:X:205:TYR:CE2	2.41	0.55
1:B:69:PRO:HA	1:B:90:THR:HA	1.87	0.55
2:Y:224:VAL:HG22	2:Y:309:THR:HG23	1.88	0.55
2:X:294:THR:HG22	2:X:301:GLN:HG2	1.89	0.55
1:A:75:ILE:HD13	2:Y:138:PHE:CZ	2.41	0.55
2:X:222:GLN:HG3	2:X:225:VAL:HG22	1.89	0.55
2:Y:138:PHE:O	2:Y:139:LEU:HD23	2.05	0.55
2:X:162:GLU:O	2:X:163:LYS:C	2.44	0.55
2:Y:64:ARG:HH11	2:Y:64:ARG:HG2	1.72	0.55
2:X:41:GLU:C	2:X:42:LEU:HD23	2.27	0.55
1:A:34:ASN:HD21	2:Y:245:PHE:H	1.54	0.54
2:Y:273:ARG:HD3	2:Y:275:ILE:CG2	2.37	0.54
1:B:47:GLN:HG3	5:B:589:HOH:O	2.08	0.54
2:Y:63:GLU:HB3	5:Y:659:HOH:O	2.07	0.54
2:X:269:PRO:HB3	5:X:726:HOH:O	2.06	0.54
2:Y:264:PHE:CD1	2:Y:272:ILE:HG12	2.42	0.54
1:A:29:LEU:H	1:A:29:LEU:HD23	1.71	0.54
2:Y:85:LEU:HD23	2:Y:85:LEU:H	1.72	0.54
2:Y:298:ASN:O	2:Y:299:ASP:HB2	2.07	0.54
1:B:2:LEU:HD21	5:B:1309:HOH:O	2.08	0.54
2:Y:265:LEU:HB2	2:Y:271:HIS:CB	2.38	0.54
1:A:83:ILE:HA	5:A:699:HOH:O	2.08	0.54
2:X:283:LEU:HD12	2:X:284:GLU:N	2.24	0.53
2:Y:72:GLU:HG3	5:Y:354:HOH:O	2.08	0.53
2:Y:58:ALA:HB3	2:Y:102:HIS:CE1	2.43	0.53
2:Y:283:LEU:HD12	2:Y:284:GLU:N	2.23	0.53
2:Y:64:ARG:O	2:Y:65:MET:HB2	2.09	0.53
2:Y:77:GLN:HB3	5:Y:392:HOH:O	2.07	0.53
2:X:76:ALA:HB3	2:X:80:THR:HB	1.90	0.53
2:X:64:ARG:HD3	2:X:98:TYR:CZ	2.44	0.53
2:Y:99:PHE:CD2	2:Y:113:ARG:HD2	2.44	0.53
2:Y:238:ILE:HA	2:Y:270:TYR:O	2.08	0.53
2:X:233:LEU:HD12	2:X:233:LEU:N	2.23	0.53
2:Y:99:PHE:CD2	2:Y:115:ARG:HB3	2.44	0.53
1:B:98:LYS:HD2	5:B:950:HOH:O	2.09	0.53

Continued on next page...

Continued from previous page...

Atom-1	Atom-2	Interatomic distance (Å)	Clash overlap (Å)
2:X:53:THR:HG22	5:X:654:HOH:O	2.09	0.53
4:X:5:NAG:H61	4:X:5:NAG:O3	2.09	0.53
2:Y:35:VAL:HG12	2:Y:36:THR:N	2.24	0.53
2:X:64:ARG:HD3	2:X:98:TYR:CE2	2.43	0.53
2:X:238:ILE:HA	2:X:270:TYR:O	2.09	0.53
2:X:245:PHE:CD2	2:X:293:VAL:HG22	2.44	0.53
1:A:26:SER:OG	1:A:29:LEU:HD23	2.09	0.52
2:Y:257:LEU:HD23	5:Y:932:HOH:O	2.08	0.52
1:A:28:ARG:HG3	1:A:32:ARG:HH11	1.72	0.52
2:Y:225:VAL:CG1	2:Y:229:GLU:HB2	2.38	0.52
1:B:57:ASN:HB3	2:Y:268:MET:SD	2.48	0.52
1:A:28:ARG:NH1	1:A:32:ARG:HD2	2.24	0.52
2:Y:283:LEU:HD13	2:Y:310:VAL:HB	1.92	0.52
1:A:38:LEU:HD11	2:Y:209:LEU:HD11	1.91	0.52
1:A:77:ILE:HD12	1:A:77:ILE:O	2.09	0.52
2:X:283:LEU:HD12	2:X:284:GLU:H	1.75	0.52
1:A:73:ARG:HG3	1:A:73:ARG:NH1	2.25	0.52
2:Y:191:LYS:HD2	2:Y:198:GLU:OE2	2.09	0.52
1:A:26:SER:H	1:A:29:LEU:HD21	1.75	0.52
2:X:36:THR:HA	2:X:53:THR:O	2.10	0.52
1:A:40:TRP:NE1	2:Y:136:PHE:HE2	2.06	0.51
2:X:153:ASP:HB3	2:X:156:LEU:HG	1.93	0.51
2:X:275:ILE:O	2:X:275:ILE:HG13	2.09	0.51
2:Y:151:VAL:HB	2:Y:156:LEU:HD12	1.91	0.51
1:A:75:ILE:HD13	2:Y:138:PHE:CE2	2.45	0.51
2:X:64:ARG:CG	2:X:64:ARG:NH1	2.72	0.51
2:X:172:PRO:HA	5:X:864:HOH:O	2.11	0.51
2:Y:222:GLN:HG3	2:Y:225:VAL:HG22	1.92	0.51
1:A:86:LYS:HE3	5:A:1229:HOH:O	2.10	0.51
2:X:258:VAL:HG21	2:X:278:ILE:HG12	1.92	0.51
2:X:269:PRO:HD2	5:X:388:HOH:O	2.11	0.51
2:X:76:ALA:HB1	5:X:579:HOH:O	2.10	0.51
2:Y:246:GLU:HG2	5:Y:646:HOH:O	2.10	0.51
2:X:231:ILE:HG13	2:X:281:ALA:HB2	1.93	0.51
2:X:126:GLY:HA2	2:X:194:ILE:HD12	1.93	0.51
2:X:256:ARG:HD2	5:X:955:HOH:O	2.10	0.51
2:Y:44:LEU:O	2:Y:121:PRO:HD2	2.11	0.51
1:A:56:ARG:HD2	5:A:797:HOH:O	2.10	0.51
2:Y:216:VAL:HB	2:Y:304:LYS:HG2	1.93	0.51
2:X:225:VAL:HG12	2:X:226:ARG:N	2.25	0.50
2:Y:60:VAL:CG2	2:Y:100:CYS:SG	3.00	0.50

Continued on next page...

Continued from previous page...

Atom-1	Atom-2	Interatomic distance (Å)	Clash overlap (Å)
2:Y:225:VAL:O	2:Y:310:VAL:HA	2.11	0.50
1:A:98:LYS:NZ	5:A:947:HOH:O	2.44	0.50
2:X:104:ASP:C	5:X:326:HOH:O	2.48	0.50
2:X:256:ARG:NH1	5:X:928:HOH:O	2.44	0.50
2:X:286:SER:HA	2:X:308:ILE:O	2.11	0.50
1:B:54:ASN:HB3	5:B:1140:HOH:O	2.10	0.50
2:X:37:PRO:HD2	2:X:53:THR:HG22	1.94	0.50
2:Y:306:ILE:HD13	2:Y:306:ILE:H	1.75	0.50
1:B:61:ARG:HD2	5:B:454:HOH:O	2.10	0.50
2:X:62:TRP:CD1	2:X:85:LEU:HD22	2.46	0.50
2:Y:68:GLU:HG2	5:Y:806:HOH:O	2.10	0.50
2:Y:94:ASP:HA	5:Y:781:HOH:O	2.10	0.50
2:Y:265:LEU:CD1	2:Y:271:HIS:HB3	2.38	0.50
2:X:84:VAL:HG23	2:X:84:VAL:O	2.10	0.50
2:X:139:LEU:HD11	2:X:145:ILE:HD11	1.92	0.50
2:X:161:HIS:NE2	2:X:191:LYS:HE3	2.26	0.50
2:X:64:ARG:HD2	2:X:97:GLU:O	2.11	0.50
2:X:268:MET:CB	2:X:269:PRO:HD3	2.25	0.50
2:Y:69:PRO:HB2	2:Y:70:PRO:CD	2.42	0.50
1:B:66:GLN:HB2	1:B:95:LEU:HD21	1.94	0.50
2:Y:98:TYR:CD1	2:Y:118:ILE:HD12	2.46	0.50
2:X:127:PHE:CE1	2:X:192:THR:HG22	2.47	0.50
2:Y:145:ILE:O	2:Y:180:SER:HA	2.12	0.49
1:A:79:ARG:C	1:A:81:LYS:H	2.15	0.49
2:Y:269:PRO:O	2:Y:271:HIS:ND1	2.45	0.49
1:B:78:VAL:O	1:B:81:LYS:N	2.35	0.49
2:Y:182:ILE:HD12	2:Y:182:ILE:O	2.12	0.49
2:Y:60:VAL:HG13	2:Y:83:SER:HB2	1.94	0.49
2:X:91:THR:HG21	5:X:835:HOH:O	2.12	0.49
2:Y:288:THR:CG2	4:Y:7:NAG:HN2	2.21	0.49
2:Y:54:CYS:O	2:Y:60:VAL:HG11	2.12	0.49
2:Y:210:GLN:HG3	2:Y:239:GLY:O	2.12	0.49
2:X:230:ASN:HD22	2:X:277:HIS:CE1	2.30	0.48
2:X:268:MET:CB	2:X:269:PRO:CD	2.83	0.48
2:X:292:ASN:ND2	4:X:6:NAG:C6	2.77	0.48
2:Y:128:LEU:HB3	5:Y:1118:HOH:O	2.12	0.48
1:B:29:LEU:C	1:B:29:LEU:HD13	2.34	0.48
2:X:249:TYR:N	2:X:249:TYR:CD1	2.82	0.48
2:Y:80:THR:HG22	5:Y:994:HOH:O	2.12	0.48
2:Y:283:LEU:CD2	5:Y:348:HOH:O	2.59	0.48
2:Y:256:ARG:O	2:Y:256:ARG:HG3	2.14	0.48

Continued on next page...

Continued from previous page...

Atom-1	Atom-2	Interatomic distance (Å)	Clash overlap (Å)
4:Y:6:NAG:H2	5:Y:755:HOH:O	2.13	0.48
2:Y:233:LEU:HD23	2:Y:306:ILE:HD11	1.95	0.48
2:Y:248:THR:HG22	2:Y:290:THR:O	2.13	0.48
2:Y:119:PHE:C	2:Y:121:PRO:HD3	2.34	0.48
1:A:68:ARG:HE	1:A:68:ARG:HB3	1.52	0.47
1:B:56:ARG:HG3	2:Y:270:TYR:CE1	2.48	0.47
2:X:62:TRP:O	2:X:69:PRO:HD2	2.14	0.47
2:X:257:LEU:N	5:X:1134:HOH:O	2.47	0.47
2:X:283:LEU:O	2:X:285:ASP:N	2.47	0.47
2:X:139:LEU:CD1	2:X:145:ILE:HD11	2.44	0.47
2:Y:58:ALA:HB1	2:Y:59:PRO:CD	2.44	0.47
1:A:64:GLN:HG3	1:A:95:LEU:HB2	1.95	0.47
2:X:49:THR:HG23	2:X:87:LEU:O	2.15	0.47
2:X:294:THR:CG2	2:X:301:GLN:HG2	2.44	0.47
2:Y:241:GLU:O	2:Y:272:ILE:HD11	2.14	0.47
2:Y:248:THR:HG23	2:Y:290:THR:HB	1.97	0.47
1:A:26:SER:HB3	5:A:846:HOH:O	2.14	0.47
2:X:54:CYS:O	2:X:82:SER:HA	2.15	0.47
2:X:119:PHE:CG	2:X:154:PRO:HG3	2.50	0.47
2:X:207:TYR:OH	2:X:241:GLU:OE1	2.26	0.47
2:X:214:ILE:HG23	2:X:237:VAL:CG2	2.42	0.47
2:X:250:PRO:HD3	2:X:288:THR:O	2.13	0.47
2:Y:264:PHE:CE1	2:Y:272:ILE:HG12	2.49	0.47
1:A:70:VAL:CG2	1:A:89:VAL:HG13	2.45	0.47
2:X:215:ASN:HB3	4:X:4:NAG:N2	2.30	0.47
2:X:292:ASN:CG	2:X:301:GLN:HE21	2.18	0.47
5:A:785:HOH:O	2:X:164:LYS:HG2	2.15	0.47
1:B:32:ARG:O	2:X:262:THR:CG2	2.62	0.47
2:Y:53:THR:HG22	2:Y:54:CYS:N	2.30	0.47
2:Y:115:ARG:HH11	2:Y:115:ARG:CB	2.18	0.47
2:Y:145:ILE:HG22	2:Y:146:THR:N	2.30	0.47
2:Y:182:ILE:CD1	5:Y:551:HOH:O	2.62	0.47
1:A:28:ARG:HG2	1:A:28:ARG:HH11	1.81	0.46
1:A:32:ARG:HD3	5:A:968:HOH:O	2.14	0.46
4:X:5:NAG:H2	5:X:1232:HOH:O	2.15	0.46
2:X:75:LYS:HD2	2:X:75:LYS:O	2.13	0.46
2:X:256:ARG:O	2:X:256:ARG:HG3	2.15	0.46
2:Y:58:ALA:O	2:Y:81:PHE:HB2	2.15	0.46
2:Y:266:LEU:H	2:Y:271:HIS:HB2	1.78	0.46
1:A:77:ILE:HD11	5:Y:327:HOH:O	2.15	0.46
2:Y:266:LEU:HD12	2:Y:266:LEU:N	2.29	0.46

Continued on next page...

Continued from previous page...

Atom-1	Atom-2	Interatomic distance (Å)	Clash overlap (Å)
2:Y:283:LEU:HD12	2:Y:284:GLU:H	1.80	0.46
2:Y:38:PRO:HD2	2:Y:39:GLY:H	1.80	0.46
2:X:37:PRO:CD	2:X:53:THR:O	2.63	0.46
2:Y:246:GLU:HA	5:Y:329:HOH:O	2.14	0.46
2:X:195:GLY:HA3	5:X:683:HOH:O	2.15	0.46
1:B:20:THR:HG23	5:B:118:HOH:O	2.16	0.46
2:X:99:PHE:CD2	2:X:113:ARG:HD2	2.51	0.46
2:Y:214:ILE:HG22	2:Y:302:ASP:CB	2.46	0.46
2:Y:290:THR:OG1	2:Y:305:ALA:HB2	2.16	0.46
1:A:55:ASN:ND2	2:X:185:ASP:OD2	2.49	0.46
2:X:216:VAL:HG13	2:X:235:CYS:SG	2.56	0.46
2:Y:75:LYS:HD3	5:Y:776:HOH:O	2.16	0.46
2:Y:217:SER:HB2	5:Y:665:HOH:O	2.16	0.46
2:Y:225:VAL:HG12	2:Y:229:GLU:HB2	1.97	0.46
2:X:55:SER:HA	2:X:81:PHE:O	2.16	0.45
2:X:292:ASN:OD1	2:X:301:GLN:NE2	2.47	0.45
2:X:37:PRO:CD	2:X:53:THR:HG22	2.46	0.45
2:X:294:THR:HG22	2:X:301:GLN:CG	2.46	0.45
2:Y:140:THR:HG23	2:Y:297:VAL:HG13	1.97	0.45
2:X:39:GLY:HA3	5:X:753:HOH:O	2.17	0.45
2:Y:69:PRO:HB2	2:Y:70:PRO:HD2	1.99	0.45
2:Y:285:ASP:O	2:Y:289:TYR:HE1	1.99	0.45
1:A:27:ARG:NE	2:Y:264:PHE:CZ	2.84	0.45
2:Y:126:GLY:N	5:Y:1144:HOH:O	2.50	0.45
2:Y:216:VAL:HG13	2:Y:235:CYS:SG	2.56	0.45
2:Y:240:ASN:HB2	2:Y:243:VAL:CG1	2.46	0.45
2:Y:36:THR:HG22	2:Y:54:CYS:HB2	1.97	0.45
1:B:79:ARG:O	1:B:79:ARG:HG3	2.16	0.45
2:X:306:ILE:HD13	2:X:306:ILE:N	2.31	0.45
2:Y:89:ASN:N	5:Y:958:HOH:O	2.48	0.45
2:X:283:LEU:C	2:X:285:ASP:N	2.70	0.45
2:Y:249:TYR:N	2:Y:249:TYR:HD1	2.15	0.45
2:X:236:ILE:HG12	2:X:273:ARG:HB2	1.99	0.45
2:Y:49:THR:HG22	2:Y:50:PHE:N	2.32	0.45
2:Y:142:ILE:N	2:Y:142:ILE:HD13	2.31	0.45
1:A:73:ARG:NH1	2:Y:136:PHE:CE1	2.84	0.45
2:Y:95:THR:HA	2:Y:118:ILE:O	2.16	0.45
2:Y:162:GLU:O	2:Y:163:LYS:C	2.56	0.45
2:X:77:GLN:NE2	2:X:77:GLN:C	2.70	0.44
2:X:289:TYR:O	2:X:306:ILE:HD13	2.16	0.44
2:Y:55:SER:HB3	2:Y:82:SER:HB3	1.98	0.44

Continued on next page...

Continued from previous page...

Atom-1	Atom-2	Interatomic distance (Å)	Clash overlap (Å)
2:Y:238:ILE:HG12	5:Y:931:HOH:O	2.17	0.44
2:X:256:ARG:HB2	5:X:630:HOH:O	2.16	0.44
2:Y:64:ARG:NH1	2:Y:98:TYR:OH	2.50	0.44
2:X:227:GLN:HE21	2:X:227:GLN:HB3	1.57	0.44
2:Y:93:LEU:HB3	5:Y:652:HOH:O	2.16	0.44
2:Y:102:HIS:C	2:Y:103:ASN:HD22	2.19	0.44
2:Y:298:ASN:O	2:Y:299:ASP:CB	2.66	0.44
2:Y:280:SER:HA	5:Y:695:HOH:O	2.17	0.44
1:A:26:SER:OG	1:A:28:ARG:HB3	2.17	0.44
2:X:67:GLN:HB2	5:X:606:HOH:O	2.17	0.44
1:B:18:THR:HA	1:B:48:ARG:O	2.18	0.44
2:X:38:PRO:HB2	5:X:596:HOH:O	2.17	0.44
2:Y:71:GLN:O	2:Y:72:GLU:HG2	2.18	0.44
1:A:57:ASN:C	1:A:57:ASN:HD22	2.20	0.44
2:Y:37:PRO:HD2	2:Y:53:THR:O	2.17	0.44
2:Y:99:PHE:HB3	2:Y:113:ARG:HD2	1.98	0.44
2:Y:117:TYR:CD2	2:Y:176:GLN:HG2	2.53	0.44
2:Y:146:THR:HA	2:Y:179:PHE:O	2.18	0.44
2:Y:283:LEU:C	2:Y:285:ASP:N	2.64	0.44
1:B:24:GLU:HG3	5:B:308:HOH:O	2.16	0.44
2:X:119:PHE:CD1	2:X:154:PRO:HG3	2.53	0.44
2:X:258:VAL:HG13	5:X:376:HOH:O	2.16	0.44
2:Y:277:HIS:CD2	2:Y:279:PRO:HD3	2.52	0.44
2:Y:289:TYR:O	2:Y:306:ILE:HD13	2.18	0.44
1:A:82:PRO:HG2	1:A:84:PHE:HE1	1.82	0.44
2:Y:85:LEU:N	2:Y:85:LEU:CD2	2.81	0.44
2:Y:262:THR:HA	2:Y:273:ARG:O	2.18	0.44
2:X:187:SER:HA	2:X:204:TYR:O	2.17	0.43
2:Y:102:HIS:O	4:Y:3:NAG:H82	2.18	0.43
2:Y:283:LEU:CG	2:Y:284:GLU:H	2.30	0.43
2:Y:288:THR:OG1	4:Y:7:NAG:C1	2.65	0.43
2:X:102:HIS:HB3	4:X:3:NAG:H2	2.00	0.43
2:X:266:LEU:H	2:X:271:HIS:HB2	1.84	0.43
2:X:283:LEU:CG	2:X:284:GLU:H	2.31	0.43
2:Y:99:PHE:HD2	2:Y:113:ARG:HD2	1.80	0.43
1:B:54:ASN:C	1:B:54:ASN:OD1	2.56	0.43
2:X:215:ASN:HA	2:X:302:ASP:OD2	2.18	0.43
2:X:255:GLY:O	2:X:256:ARG:C	2.56	0.43
1:B:26:SER:O	1:B:29:LEU:HB3	2.18	0.43
2:X:238:ILE:HG12	2:X:239:GLY:N	2.33	0.43
2:Y:214:ILE:O	2:Y:302:ASP:OD2	2.36	0.43

Continued on next page...

Continued from previous page...

Atom-1	Atom-2	Interatomic distance (Å)	Clash overlap (Å)
2:X:37:PRO:HD2	2:X:53:THR:HB	2.00	0.43
2:Y:273:ARG:HG2	2:Y:274:SER:N	2.34	0.43
2:Y:294:THR:HG21	4:Y:6:NAG:O7	2.19	0.43
1:A:34:ASN:ND2	2:Y:245:PHE:H	2.15	0.43
2:Y:58:ALA:HB1	2:Y:59:PRO:HD2	2.00	0.43
1:B:12:MET:HG3	5:B:580:HOH:O	2.19	0.43
2:X:42:LEU:HD23	2:X:42:LEU:N	2.34	0.43
2:X:257:LEU:HD12	2:X:257:LEU:H	1.84	0.43
2:Y:37:PRO:HA	2:Y:38:PRO:HA	1.80	0.43
2:Y:174:ASP:OD1	2:Y:176:GLN:HB2	2.19	0.43
2:Y:210:GLN:HB2	5:Y:352:HOH:O	2.18	0.43
2:X:84:VAL:O	2:X:84:VAL:CG2	2.66	0.43
2:X:166:ASP:N	5:X:389:HOH:O	2.49	0.43
2:X:250:PRO:C	2:X:252:LYS:H	2.23	0.43
2:Y:240:ASN:HB2	2:Y:243:VAL:HG12	1.99	0.43
2:Y:249:TYR:HB2	2:Y:250:PRO:CD	2.48	0.43
1:B:36:ASN:ND2	1:B:36:ASN:N	2.60	0.42
2:X:37:PRO:HD2	2:X:53:THR:CB	2.48	0.42
2:X:165:GLY:HA2	5:X:389:HOH:O	2.19	0.42
2:X:260:PRO:HB3	2:X:276:LEU:HD23	2.01	0.42
2:Y:295:GLU:OE2	2:Y:297:VAL:HB	2.18	0.42
2:Y:48:SER:OG	2:Y:90:LEU:HD12	2.20	0.42
1:B:80:LYS:O	1:B:80:LYS:HG2	2.20	0.42
2:Y:72:GLU:HB2	2:Y:84:VAL:HG23	2.01	0.42
2:Y:177:ARG:NH1	2:Y:177:ARG:HG3	2.35	0.42
2:Y:292:ASN:CG	2:Y:301:GLN:HE21	2.23	0.42
2:Y:251:ARG:O	2:Y:251:ARG:HG2	2.19	0.42
1:A:79:ARG:O	1:A:81:LYS:N	2.51	0.42
2:Y:238:ILE:HD12	2:Y:271:HIS:CE1	2.55	0.42
1:A:73:ARG:HG3	1:A:73:ARG:HH11	1.85	0.42
2:X:153:ASP:HA	2:X:154:PRO:HD3	1.72	0.42
1:B:56:ARG:CD	1:B:56:ARG:N	2.79	0.41
2:X:279:PRO:HG3	5:X:1267:HOH:O	2.20	0.41
2:X:283:LEU:CD1	2:X:284:GLU:H	2.33	0.41
2:Y:160:LEU:HB2	2:Y:179:PHE:CE2	2.55	0.41
2:Y:177:ARG:HG3	2:Y:177:ARG:HH11	1.85	0.41
2:Y:250:PRO:HD3	2:Y:288:THR:O	2.19	0.41
2:X:37:PRO:HD2	2:X:53:THR:O	2.20	0.41
2:X:292:ASN:ND2	2:X:301:GLN:HE21	2.19	0.41
2:Y:275:ILE:HD11	2:Y:277:HIS:HB2	2.02	0.41
1:B:75:ILE:N	1:B:75:ILE:HD12	2.36	0.41

Continued on next page...

Continued from previous page...

Atom-1	Atom-2	Interatomic distance (Å)	Clash overlap (Å)
2:X:283:LEU:O	2:X:284:GLU:HB2	2.20	0.41
2:X:286:SER:HB2	2:X:310:VAL:H	1.84	0.41
1:A:25:ILE:HD11	1:A:44:VAL:HG13	2.02	0.41
1:A:55:ASN:HB3	1:A:57:ASN:H	1.86	0.41
1:B:56:ARG:HD3	2:Y:241:GLU:OE1	2.21	0.41
2:X:145:ILE:O	2:X:180:SER:HA	2.20	0.41
2:Y:253:GLU:HB2	5:Y:1083:HOH:O	2.20	0.41
1:B:36:ASN:CA	2:X:242:VAL:HG23	2.47	0.41
2:X:283:LEU:HD13	2:X:310:VAL:HB	2.03	0.41
2:Y:45:ASN:O	2:Y:90:LEU:HD12	2.21	0.41
2:X:139:LEU:HD11	2:X:145:ILE:CD1	2.50	0.41
2:X:160:LEU:HD23	2:X:160:LEU:HA	1.89	0.41
2:X:219:ASN:ND2	2:X:220:ALA:N	2.43	0.41
2:X:246:GLU:HB3	2:X:292:ASN:HB3	2.03	0.41
1:A:72:VAL:HG13	1:A:89:VAL:HG12	2.02	0.41
2:X:37:PRO:HD2	2:X:53:THR:CG2	2.51	0.41
2:X:37:PRO:HA	2:X:38:PRO:HA	1.64	0.41
2:Y:253:GLU:HA	5:Y:468:HOH:O	2.19	0.41
1:B:79:ARG:O	1:B:80:LYS:HB3	2.21	0.41
2:X:182:ILE:CD1	5:X:552:HOH:O	2.68	0.41
2:Y:214:ILE:HG22	2:Y:302:ASP:HB3	2.01	0.41
2:Y:222:GLN:HB2	5:Y:1254:HOH:O	2.21	0.41
2:X:248:THR:HG22	2:X:290:THR:HB	1.96	0.41
2:Y:220:ALA:HB1	5:Y:857:HOH:O	2.20	0.41
2:X:68:GLU:HB2	2:X:71:GLN:NE2	2.36	0.40
2:X:146:THR:O	2:X:148:PRO:HD3	2.21	0.40
2:X:231:ILE:C	2:X:232:THR:HG22	2.41	0.40
2:Y:63:GLU:HG3	2:Y:63:GLU:O	2.20	0.40
2:X:231:ILE:HB	2:X:278:ILE:HB	2.03	0.40
2:Y:64:ARG:HG3	2:Y:65:MET:HG2	2.03	0.40
1:A:77:ILE:HA	1:A:82:PRO:HA	2.03	0.40
2:X:306:ILE:HD13	2:X:306:ILE:H	1.85	0.40
2:Y:48:SER:HA	5:Y:1089:HOH:O	2.21	0.40
2:Y:241:GLU:HG3	2:Y:270:TYR:CE1	2.57	0.40
1:A:44:VAL:HG21	1:A:91:LEU:HD11	2.02	0.40
5:A:804:HOH:O	2:X:164:LYS:HG3	2.21	0.40
2:Y:101:THR:HB	2:Y:102:HIS:H	1.62	0.40
2:Y:292:ASN:ND2	2:Y:301:GLN:HE21	2.19	0.40

There are no symmetry-related clashes.

5.3 Torsion angles [i](#)

5.3.1 Protein backbone [i](#)

In the following table, the Percentiles column shows the percent Ramachandran outliers of the chain as a percentile score with respect to all X-ray entries followed by that with respect to entries of similar resolution.

The Analysed column shows the number of residues for which the backbone conformation was analysed, and the total number of residues.

Mol	Chain	Analysed	Favoured	Allowed	Outliers	Percentiles	
1	A	95/172 (55%)	89 (94%)	4 (4%)	2 (2%)	7	5
1	B	99/172 (58%)	93 (94%)	6 (6%)	0	100	100
2	X	270/289 (93%)	242 (90%)	19 (7%)	9 (3%)	4	2
2	Y	269/289 (93%)	224 (83%)	38 (14%)	7 (3%)	5	4
All	All	733/922 (80%)	648 (88%)	67 (9%)	18 (2%)	5	4

All (18) Ramachandran outliers are listed below:

Mol	Chain	Res	Type
2	X	268	MET
2	Y	299	ASP
2	X	251	ARG
2	X	163	LYS
2	Y	37	PRO
2	Y	38	PRO
2	Y	121	PRO
1	A	78	VAL
2	X	38	PRO
2	X	40	PRO
2	Y	47	SER
2	Y	148	PRO
2	Y	284	GLU
1	A	80	LYS
2	X	254	SER
2	X	59	PRO
2	X	250	PRO
2	X	70	PRO

5.3.2 Protein sidechains [i](#)

In the following table, the Percentiles column shows the percent sidechain outliers of the chain as a percentile score with respect to all X-ray entries followed by that with respect to entries of similar resolution.

The Analysed column shows the number of residues for which the sidechain conformation was analysed, and the total number of residues.

Mol	Chain	Analysed	Rotameric	Outliers	Percentiles	
1	A	90/153 (59%)	80 (89%)	10 (11%)	6	7
1	B	93/153 (61%)	80 (86%)	13 (14%)	3	3
2	X	251/264 (95%)	219 (87%)	32 (13%)	4	4
2	Y	250/264 (95%)	224 (90%)	26 (10%)	7	8
All	All	684/834 (82%)	603 (88%)	81 (12%)	5	5

All (81) residues with a non-rotameric sidechain are listed below:

Mol	Chain	Res	Type
1	A	6	THR
1	A	9	GLU
1	A	26	SER
1	A	28	ARG
1	A	29	LEU
1	A	57	ASN
1	A	58	VAL
1	A	65	VAL
1	A	68	ARG
1	A	95	LEU
1	B	6	THR
1	B	17	LYS
1	B	36	ASN
1	B	48	ARG
1	B	56	ARG
1	B	57	ASN
1	B	71	GLN
1	B	78	VAL
1	B	81	LYS
1	B	90	THR
1	B	95	LEU
1	B	97	CYS
1	B	98	LYS
2	X	34	VAL

Continued on next page...

Continued from previous page...

Mol	Chain	Res	Type
2	X	42	LEU
2	X	60	VAL
2	X	61	VAL
2	X	64	ARG
2	X	75	LYS
2	X	77	GLN
2	X	78	ASP
2	X	103	ASN
2	X	104	ASP
2	X	115	ARG
2	X	131	ASP
2	X	135	LEU
2	X	141	GLU
2	X	160	LEU
2	X	162	GLU
2	X	166	ASP
2	X	219	ASN
2	X	227	GLN
2	X	232	THR
2	X	238	ILE
2	X	246	GLU
2	X	257	LEU
2	X	262	THR
2	X	265	LEU
2	X	268	MET
2	X	275	ILE
2	X	276	LEU
2	X	283	LEU
2	X	299	ASP
2	X	306	ILE
2	X	309	THR
2	Y	75	LYS
2	Y	77	GLN
2	Y	80	THR
2	Y	85	LEU
2	Y	103	ASN
2	Y	112	GLU
2	Y	115	ARG
2	Y	130	ASN
2	Y	131	ASP
2	Y	141	GLU
2	Y	151	VAL

Continued on next page...

Continued from previous page...

Mol	Chain	Res	Type
2	Y	160	LEU
2	Y	219	ASN
2	Y	232	THR
2	Y	238	ILE
2	Y	242	VAL
2	Y	249	TYR
2	Y	257	LEU
2	Y	262	THR
2	Y	268	MET
2	Y	275	ILE
2	Y	283	LEU
2	Y	299	ASP
2	Y	306	ILE
2	Y	307	ASN
2	Y	309	THR

Sometimes sidechains can be flipped to improve hydrogen bonding and reduce clashes. All (17) such sidechains are listed below:

Mol	Chain	Res	Type
1	A	55	ASN
1	A	57	ASN
1	A	59	GLN
1	B	36	ASN
1	B	47	GLN
1	B	57	ASN
1	B	64	GLN
1	B	71	GLN
2	X	77	GLN
2	X	219	ASN
2	X	222	GLN
2	X	227	GLN
2	Y	77	GLN
2	Y	219	ASN
2	Y	222	GLN
2	Y	227	GLN
2	Y	277	HIS

5.3.3 RNA

There are no RNA molecules in this entry.

5.4 Non-standard residues in protein, DNA, RNA chains [i](#)

There are no non-standard protein/DNA/RNA residues in this entry.

5.5 Carbohydrates [i](#)

There are no monosaccharides in this entry.

5.6 Ligand geometry [i](#)

14 ligands are modelled in this entry.

In the following table, the Counts columns list the number of bonds (or angles) for which Mogul statistics could be retrieved, the number of bonds (or angles) that are observed in the model and the number of bonds (or angles) that are defined in the Chemical Component Dictionary. The Link column lists molecule types, if any, to which the group is linked. The Z score for a bond length (or angle) is the number of standard deviations the observed value is removed from the expected value. A bond length (or angle) with $|Z| > 2$ is considered an outlier worth inspection. RMSZ is the root-mean-square of all Z scores of the bond lengths (or angles).

Mol	Type	Chain	Res	Link	Bond lengths			Bond angles		
					Counts	RMSZ	# Z > 2	Counts	RMSZ	# Z > 2
4	NAG	X	6	2	14,14,15	0.66	0	17,19,21	0.95	1 (5%)
4	NAG	Y	2	2	14,14,15	0.58	0	17,19,21	0.64	0
3	NDG	X	1	-	14,14,15	0.62	0	17,19,21	0.68	1 (5%)
4	NAG	Y	1	2	14,14,15	0.65	0	17,19,21	0.64	0
4	NAG	X	5	2	14,14,15	0.54	0	17,19,21	0.71	1 (5%)
4	NAG	X	4	2	14,14,15	0.70	0	17,19,21	0.84	0
4	NAG	X	2	2	14,14,15	0.55	0	17,19,21	0.67	0
4	NAG	Y	4	2	14,14,15	0.69	0	17,19,21	0.59	0
4	NAG	X	3	2	14,14,15	0.63	0	17,19,21	0.72	1 (5%)
4	NAG	X	7	2	14,14,15	0.64	0	17,19,21	0.56	0
4	NAG	Y	5	2	14,14,15	0.68	0	17,19,21	0.75	1 (5%)
4	NAG	Y	3	2	14,14,15	0.60	0	17,19,21	0.62	0
4	NAG	Y	7	2	14,14,15	0.64	0	17,19,21	0.60	0
4	NAG	Y	6	2	14,14,15	0.75	0	17,19,21	0.80	0

In the following table, the Chirals column lists the number of chiral outliers, the number of chiral centers analysed, the number of these observed in the model and the number defined in the Chemical Component Dictionary. Similar counts are reported in the Torsion and Rings columns. '-' means no outliers of that kind were identified.

Mol	Type	Chain	Res	Link	Chirals	Torsions	Rings
4	NAG	X	6	2	-	4/6/23/26	0/1/1/1
4	NAG	Y	2	2	-	3/6/23/26	0/1/1/1
3	NDG	X	1	-	-	2/6/23/26	0/1/1/1
4	NAG	Y	1	2	1/1/5/7	4/6/23/26	0/1/1/1
4	NAG	X	5	2	1/1/5/7	6/6/23/26	0/1/1/1
4	NAG	X	4	2	-	3/6/23/26	0/1/1/1
4	NAG	X	2	2	-	2/6/23/26	0/1/1/1
4	NAG	Y	4	2	-	2/6/23/26	0/1/1/1
4	NAG	X	3	2	1/1/5/7	2/6/23/26	0/1/1/1
4	NAG	Y	5	2	1/1/5/7	5/6/23/26	0/1/1/1
4	NAG	X	7	2	1/1/5/7	5/6/23/26	0/1/1/1
4	NAG	Y	3	2	-	4/6/23/26	0/1/1/1
4	NAG	Y	7	2	-	5/6/23/26	0/1/1/1
4	NAG	Y	6	2	-	4/6/23/26	0/1/1/1

There are no bond length outliers.

All (5) bond angle outliers are listed below:

Mol	Chain	Res	Type	Atoms	Z	Observed(°)	Ideal(°)
4	X	6	NAG	C2-N2-C7	-2.64	119.14	122.90
4	Y	5	NAG	C2-N2-C7	-2.23	119.72	122.90
4	X	5	NAG	C2-N2-C7	-2.17	119.81	122.90
4	X	3	NAG	C2-N2-C7	-2.08	119.94	122.90
3	X	1	NDG	C2-N2-C7	-2.04	120.00	122.90

All (5) chirality outliers are listed below:

Mol	Chain	Res	Type	Atom
4	X	3	NAG	C1
4	X	5	NAG	C1
4	X	7	NAG	C1
4	Y	1	NAG	C1
4	Y	5	NAG	C1

All (51) torsion outliers are listed below:

Mol	Chain	Res	Type	Atoms
4	X	2	NAG	C8-C7-N2-C2
4	X	2	NAG	O7-C7-N2-C2

Continued on next page...

Continued from previous page...

Mol	Chain	Res	Type	Atoms
4	X	3	NAG	C8-C7-N2-C2
4	X	3	NAG	O7-C7-N2-C2
4	X	4	NAG	C3-C2-N2-C7
4	X	4	NAG	C8-C7-N2-C2
4	X	4	NAG	O7-C7-N2-C2
4	X	5	NAG	C8-C7-N2-C2
4	X	5	NAG	O7-C7-N2-C2
4	X	7	NAG	C8-C7-N2-C2
4	X	7	NAG	O7-C7-N2-C2
4	Y	1	NAG	C8-C7-N2-C2
4	Y	1	NAG	O7-C7-N2-C2
4	Y	2	NAG	C8-C7-N2-C2
4	Y	2	NAG	O7-C7-N2-C2
4	Y	3	NAG	C8-C7-N2-C2
4	Y	3	NAG	O7-C7-N2-C2
4	Y	4	NAG	C8-C7-N2-C2
4	Y	4	NAG	O7-C7-N2-C2
4	Y	5	NAG	C8-C7-N2-C2
4	Y	5	NAG	O7-C7-N2-C2
4	Y	6	NAG	C8-C7-N2-C2
4	Y	6	NAG	O7-C7-N2-C2
4	Y	7	NAG	C8-C7-N2-C2
4	Y	7	NAG	O7-C7-N2-C2
4	X	6	NAG	C4-C5-C6-O6
4	X	6	NAG	O5-C5-C6-O6
3	X	1	NDG	O5-C5-C6-O6
4	X	5	NAG	O5-C5-C6-O6
4	Y	6	NAG	O5-C5-C6-O6
4	Y	7	NAG	C4-C5-C6-O6
4	Y	1	NAG	C4-C5-C6-O6
4	Y	7	NAG	O5-C5-C6-O6
3	X	1	NDG	C4-C5-C6-O6
4	Y	5	NAG	C1-C2-N2-C7
4	X	5	NAG	C4-C5-C6-O6
4	Y	6	NAG	C4-C5-C6-O6
4	Y	1	NAG	O5-C5-C6-O6
4	Y	2	NAG	C1-C2-N2-C7
4	Y	3	NAG	O5-C5-C6-O6
4	X	5	NAG	C1-C2-N2-C7
4	Y	5	NAG	O5-C5-C6-O6
4	X	7	NAG	C4-C5-C6-O6
4	X	6	NAG	C8-C7-N2-C2

Continued on next page...

Continued from previous page...

Mol	Chain	Res	Type	Atoms
4	X	7	NAG	C1-C2-N2-C7
4	Y	5	NAG	C3-C2-N2-C7
4	X	7	NAG	O5-C5-C6-O6
4	Y	3	NAG	C1-C2-N2-C7
4	X	5	NAG	C3-C2-N2-C7
4	Y	7	NAG	C1-C2-N2-C7
4	X	6	NAG	O7-C7-N2-C2

There are no ring outliers.

10 monomers are involved in 23 short contacts:

Mol	Chain	Res	Type	Clashes	Symm-Clashes
4	X	6	NAG	2	0
4	X	5	NAG	2	0
4	X	4	NAG	2	0
4	Y	4	NAG	1	0
4	X	3	NAG	2	0
4	X	7	NAG	2	0
4	Y	5	NAG	1	0
4	Y	3	NAG	2	0
4	Y	7	NAG	5	0
4	Y	6	NAG	4	0

5.7 Other polymers [i](#)

There are no such residues in this entry.

5.8 Polymer linkage issues [i](#)

There are no chain breaks in this entry.

6 Fit of model and data

6.1 Protein, DNA and RNA chains

In the following table, the column labelled ‘#RSRZ > 2’ contains the number (and percentage) of RSRZ outliers, followed by percent RSRZ outliers for the chain as percentile scores relative to all X-ray entries and entries of similar resolution. The OWAB column contains the minimum, median, 95th percentile and maximum values of the occupancy-weighted average B-factor per residue. The column labelled ‘Q < 0.9’ lists the number of (and percentage) of residues with an average occupancy less than 0.9.

Mol	Chain	Analysed	<RSRZ>	#RSRZ>2	OWAB(Å ²)	Q<0.9
1	A	97/172 (56%)	0.11	3 (3%) 49 56	20, 38, 81, 107	0
1	B	101/172 (58%)	-0.01	1 (0%) 82 86	21, 36, 57, 93	0
2	X	274/289 (94%)	0.02	2 (0%) 87 91	26, 56, 88, 100	0
2	Y	273/289 (94%)	1.81	106 (38%) 0 0	37, 95, 114, 120	0
All	All	745/922 (80%)	0.68	112 (15%) 2 3	20, 60, 109, 120	0

All (112) RSRZ outliers are listed below:

Mol	Chain	Res	Type	RSRZ
2	Y	102	HIS	7.9
2	Y	101	THR	7.8
2	Y	82	SER	7.6
2	Y	85	LEU	7.5
2	Y	62	TRP	7.4
2	Y	87	LEU	7.2
2	Y	46	VAL	7.1
2	Y	297	VAL	6.9
2	Y	216	VAL	6.7
2	Y	74	ALA	5.9
2	Y	59	PRO	5.7
2	Y	81	PHE	5.7
1	A	80	LYS	5.5
2	Y	84	VAL	5.2
2	Y	237	VAL	5.0
2	Y	252	LYS	5.0
2	Y	60	VAL	4.9
2	Y	254	SER	4.8
2	Y	38	PRO	4.8
2	Y	121	PRO	4.7
2	Y	126	GLY	4.6

Continued on next page...

Continued from previous page...

Mol	Chain	Res	Type	RSRZ
2	Y	269	PRO	4.5
1	A	79	ARG	4.5
2	Y	55	SER	4.3
2	Y	215	ASN	4.3
2	Y	268	MET	4.1
2	Y	83	SER	4.1
2	Y	256	ARG	4.0
2	Y	119	PHE	4.0
2	Y	112	GLU	4.0
2	Y	228	GLY	3.9
2	Y	63	GLU	3.9
2	Y	257	LEU	3.9
2	Y	53	THR	3.9
2	Y	78	ASP	3.8
2	Y	68	GLU	3.8
2	Y	136	PHE	3.7
2	Y	265	LEU	3.5
2	Y	266	LEU	3.5
2	Y	104	ASP	3.5
2	Y	56	GLY	3.4
2	Y	116	LEU	3.4
2	Y	225	VAL	3.4
2	Y	272	ILE	3.4
2	Y	47	SER	3.3
2	Y	307	ASN	3.3
2	Y	231	ILE	3.2
2	Y	278	ILE	3.2
2	Y	214	ILE	3.2
2	Y	259	GLU	3.1
2	Y	125	VAL	3.1
2	Y	114	LYS	3.0
2	Y	300	HIS	3.0
2	Y	111	ASP	3.0
2	Y	289	TYR	2.9
2	Y	91	THR	2.9
2	Y	35	VAL	2.9
2	Y	209	LEU	2.9
2	Y	308	ILE	2.8
2	Y	305	ALA	2.8
2	Y	77	GLN	2.8
2	Y	249	TYR	2.8
2	Y	52	LEU	2.8

Continued on next page...

Continued from previous page...

Mol	Chain	Res	Type	RSRZ
2	Y	43	VAL	2.7
2	Y	49	THR	2.7
2	Y	303	GLU	2.7
2	Y	61	VAL	2.7
2	Y	75	LYS	2.7
2	Y	79	GLY	2.7
2	Y	302	ASP	2.7
2	Y	212	SER	2.7
2	Y	263	ASP	2.7
2	Y	253	GLU	2.6
2	Y	44	LEU	2.6
2	Y	48	SER	2.6
2	Y	67	GLN	2.6
2	Y	267	ASP	2.6
2	Y	100	CYS	2.6
2	Y	291	CYS	2.6
2	Y	222	GLN	2.6
2	Y	219	ASN	2.5
2	Y	304	LYS	2.5
2	Y	298	ASN	2.5
2	Y	277	HIS	2.4
2	X	229	GLU	2.4
2	Y	124	THR	2.4
2	Y	213	SER	2.4
2	X	266	LEU	2.4
2	Y	90	LEU	2.3
1	A	102	VAL	2.3
2	Y	57	SER	2.3
2	Y	292	ASN	2.3
2	Y	246	GLU	2.3
2	Y	92	GLY	2.3
2	Y	95	THR	2.3
2	Y	99	PHE	2.3
2	Y	123	PRO	2.3
1	B	79	ARG	2.3
2	Y	76	ALA	2.3
2	Y	311	VAL	2.2
2	Y	93	LEU	2.2
2	Y	229	GLU	2.2
2	Y	301	GLN	2.2
2	Y	115	ARG	2.2
2	Y	290	THR	2.1

Continued on next page...

Continued from previous page...

Mol	Chain	Res	Type	RSRZ
2	Y	296	SER	2.1
2	Y	221	VAL	2.1
2	Y	294	THR	2.1
2	Y	58	ALA	2.1
2	Y	280	SER	2.1
2	Y	73	MET	2.0
2	Y	196	ASP	2.0

6.2 Non-standard residues in protein, DNA, RNA chains [i](#)

There are no non-standard protein/DNA/RNA residues in this entry.

6.3 Carbohydrates [i](#)

There are no monosaccharides in this entry.

6.4 Ligands [i](#)

In the following table, the Atoms column lists the number of modelled atoms in the group and the number defined in the chemical component dictionary. The B-factors column lists the minimum, median, 95th percentile and maximum values of B factors of atoms in the group. The column labelled 'Q< 0.9' lists the number of atoms with occupancy less than 0.9.

Mol	Type	Chain	Res	Atoms	RSCC	RSR	B-factors(Å ²)	Q<0.9
4	NAG	Y	4	14/15	0.47	0.57	121,123,123,123	0
4	NAG	X	7	14/15	0.53	0.80	116,119,122,122	0
4	NAG	Y	5	14/15	0.63	0.40	112,118,121,121	0
4	NAG	Y	6	14/15	0.64	0.53	113,118,121,121	0
4	NAG	Y	1	14/15	0.65	0.32	119,123,125,125	0
4	NAG	Y	2	14/15	0.66	0.34	116,120,122,122	0
4	NAG	X	4	14/15	0.75	0.29	106,109,111,111	0
4	NAG	Y	7	14/15	0.75	0.42	117,118,119,119	0
4	NAG	X	3	14/15	0.77	0.27	117,119,120,120	0
4	NAG	Y	3	14/15	0.79	0.35	114,117,118,118	0
4	NAG	X	2	14/15	0.83	0.27	96,102,105,107	0
3	NDG	X	1	14/15	0.85	0.13	81,86,89,89	0
4	NAG	X	6	14/15	0.90	0.17	87,94,100,100	0
4	NAG	X	5	14/15	0.92	0.14	87,89,91,91	0

6.5 Other polymers [i](#)

There are no such residues in this entry.