



Full wwPDB X-ray Structure Validation Report ⓘ

Sep 11, 2023 – 10:13 PM EDT

PDB ID : 4LZ8
Title : Crystal structures of GLuR2 ligand-binding-domain in complex with glutamate and positive allosteric modulators
Authors : Pandit, J.
Deposited on : 2013-07-31
Resolution : 1.85 Å(reported)

This is a Full wwPDB X-ray Structure Validation Report for a publicly released PDB entry.

We welcome your comments at validation@mail.wwpdb.org

A user guide is available at

<https://www.wwpdb.org/validation/2017/XrayValidationReportHelp>

with specific help available everywhere you see the ⓘ symbol.

The types of validation reports are described at

<http://www.wwpdb.org/validation/2017/FAQs#types>.

The following versions of software and data (see [references ⓘ](#)) were used in the production of this report:

MolProbity : 4.02b-467
Mogul : 1.8.5 (274361), CSD as541be (2020)
Xtriage (Phenix) : 1.13
EDS : 2.35.1
buster-report : 1.1.7 (2018)
Percentile statistics : 20191225.v01 (using entries in the PDB archive December 25th 2019)
Refmac : 5.8.0158
CCP4 : 7.0.044 (Gargrove)
Ideal geometry (proteins) : Engh & Huber (2001)
Ideal geometry (DNA, RNA) : Parkinson et al. (1996)
Validation Pipeline (wwPDB-VP) : 2.35.1

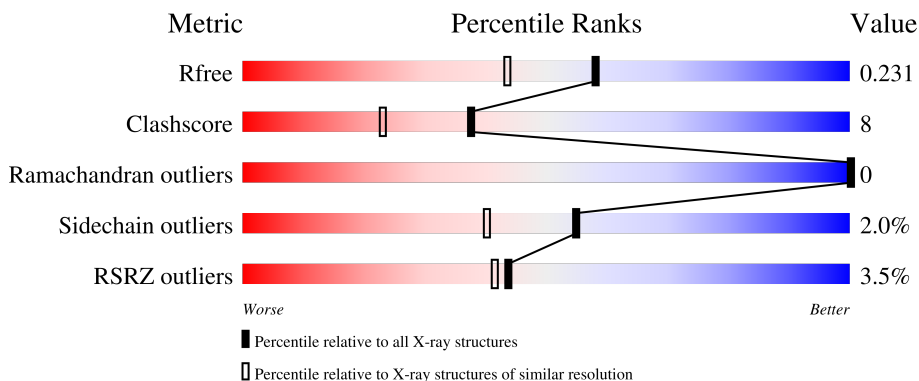
1 Overall quality at a glance

The following experimental techniques were used to determine the structure:

X-RAY DIFFRACTION

The reported resolution of this entry is 1.85 Å.

Percentile scores (ranging between 0-100) for global validation metrics of the entry are shown in the following graphic. The table shows the number of entries on which the scores are based.



Metric	Whole archive (#Entries)	Similar resolution (#Entries, resolution range(Å))
R_{free}	130704	2469 (1.86-1.86)
Clashscore	141614	2625 (1.86-1.86)
Ramachandran outliers	138981	2592 (1.86-1.86)
Sidechain outliers	138945	2592 (1.86-1.86)
RSRZ outliers	127900	2436 (1.86-1.86)

The table below summarises the geometric issues observed across the polymeric chains and their fit to the electron density. The red, orange, yellow and green segments of the lower bar indicate the fraction of residues that contain outliers for ≥ 3 , 2, 1 and 0 types of geometric quality criteria respectively. A grey segment represents the fraction of residues that are not modelled. The numeric value for each fraction is indicated below the corresponding segment, with a dot representing fractions $\leq 5\%$. The upper red bar (where present) indicates the fraction of residues that have poor fit to the electron density. The numeric value is given above the bar.

Mol	Chain	Length	Quality of chain
1	A	275	 4% 81% 11% • 6%
1	B	275	 3% 85% 7% • 7%
1	C	275	 3% 83% 9% • 7%

The following table lists non-polymeric compounds, carbohydrate monomers and non-standard residues in protein, DNA, RNA chains that are outliers for geometric or electron-density-fit criteria:

Mol	Type	Chain	Res	Chirality	Geometry	Clashes	Electron density
3	1YX	A	802[A]	-	-	X	-
3	1YX	B	805	-	-	X	-

2 Entry composition i

There are 5 unique types of molecules in this entry. The entry contains 6503 atoms, of which 0 are hydrogens and 0 are deuteriums.

In the tables below, the ZeroOcc column contains the number of atoms modelled with zero occupancy, the AltConf column contains the number of residues with at least one atom in alternate conformation and the Trace column contains the number of residues modelled with at most 2 atoms.

- Molecule 1 is a protein called Glutamate receptor 2.

Mol	Chain	Residues	Atoms					ZeroOcc	AltConf	Trace
			Total	C	N	O	S			
1	A	258	2018	1286	336	382	14	0	0	0
1	B	257	2009	1280	334	381	14	0	0	0
1	C	257	2008	1279	334	381	14	0	0	0

There are 30 discrepancies between the modelled and reference sequences:

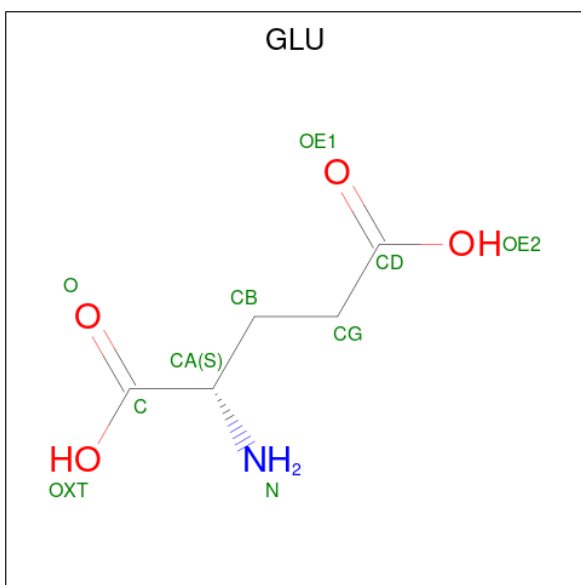
Chain	Residue	Modelled	Actual	Comment	Reference
A	378	GLY	-	expression tag	UNP P19491
A	379	SER	-	expression tag	UNP P19491
A	380	ALA	-	expression tag	UNP P19491
A	381	MET	-	expression tag	UNP P19491
A	382	GLY	-	expression tag	UNP P19491
A	389	ARG	GLY	engineered mutation	UNP P19491
A	390	GLY	LEU	engineered mutation	UNP P19491
A	391	ALA	GLU	engineered mutation	UNP P19491
A	507	GLY	-	linker	UNP P19491
A	508	THR	-	linker	UNP P19491
B	378	GLY	-	expression tag	UNP P19491
B	379	SER	-	expression tag	UNP P19491
B	380	ALA	-	expression tag	UNP P19491
B	381	MET	-	expression tag	UNP P19491
B	382	GLY	-	expression tag	UNP P19491
B	389	ARG	GLY	engineered mutation	UNP P19491
B	390	GLY	LEU	engineered mutation	UNP P19491
B	391	ALA	GLU	engineered mutation	UNP P19491
B	507	GLY	-	linker	UNP P19491
B	508	THR	-	linker	UNP P19491
C	378	GLY	-	expression tag	UNP P19491
C	379	SER	-	expression tag	UNP P19491
C	380	ALA	-	expression tag	UNP P19491

Continued on next page...

Continued from previous page...

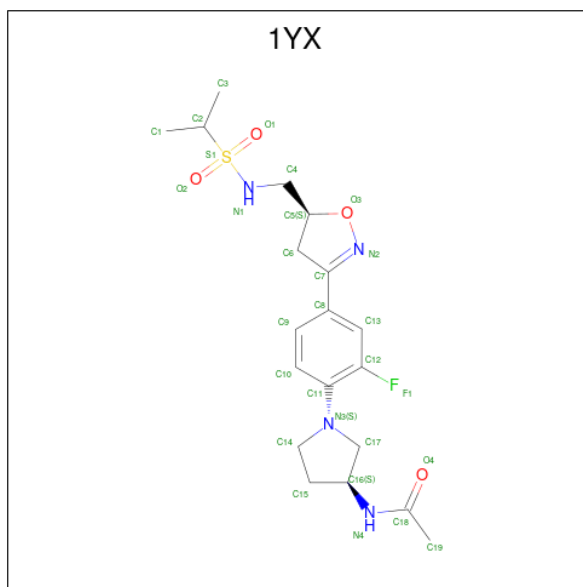
Chain	Residue	Modelled	Actual	Comment	Reference
C	381	MET	-	expression tag	UNP P19491
C	382	GLY	-	expression tag	UNP P19491
C	389	ARG	GLY	engineered mutation	UNP P19491
C	390	GLY	LEU	engineered mutation	UNP P19491
C	391	ALA	GLU	engineered mutation	UNP P19491
C	507	GLY	-	linker	UNP P19491
C	508	THR	-	linker	UNP P19491

- Molecule 2 is GLUTAMIC ACID (three-letter code: GLU) (formula: C₅H₉NO₄).



Mol	Chain	Residues	Atoms				ZeroOcc	AltConf
			Total	C	N	O		
2	A	1	10	5	1	4	0	0
2	B	1	10	5	1	4	0	0
2	C	1	10	5	1	4	0	0

- Molecule 3 is N-[(3S)-1-{2-fluoro-4-[(5S)-5-[(propan-2-ylsulfonyl)amino]methyl]-4,5-dihydro-1,2-oxazol-3-yl]phenyl}pyrrolidin-3-yl]acetamide (three-letter code: 1YX) (formula: C₁₉H₂₇FN₄O₄S).



Mol	Chain	Residues	Atoms					ZeroOcc	AltConf	
			Total	C	F	N	O			S
3	A	1	58	38	2	8	8	2	0	1
3	B	1	29	19	1	4	4	1	0	0

- Molecule 4 is ZINC ION (three-letter code: ZN) (formula: Zn).

Mol	Chain	Residues	Atoms		ZeroOcc	AltConf
			Total	Zn		
4	B	3	3	3	0	0
4	C	2	2	2	0	0


- Molecule 5 is water.

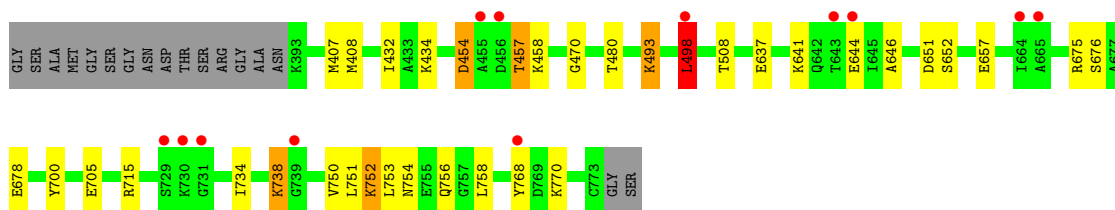
Mol	Chain	Residues	Atoms		ZeroOcc	AltConf
			Total	O		
5	A	105	105	105	0	0
5	B	142	142	142	0	0
5	C	99	99	99	0	0

3 Residue-property plots [i](#)


These plots are drawn for all protein, RNA, DNA and oligosaccharide chains in the entry. The first graphic for a chain summarises the proportions of the various outlier classes displayed in the second graphic. The second graphic shows the sequence view annotated by issues in geometry and electron density. Residues are color-coded according to the number of geometric quality criteria for which they contain at least one outlier: green = 0, yellow = 1, orange = 2 and red = 3 or more. A red dot above a residue indicates a poor fit to the electron density ($RSRZ > 2$). Stretches of 2 or more consecutive residues without any outlier are shown as a green connector. Residues present in the sample, but not in the model, are shown in grey.

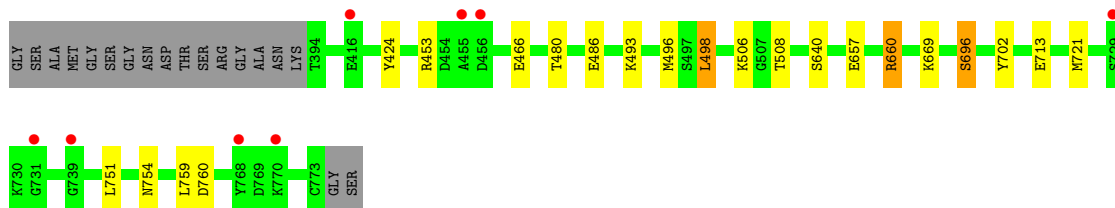
- Molecule 1: Glutamate receptor 2

Chain A: 




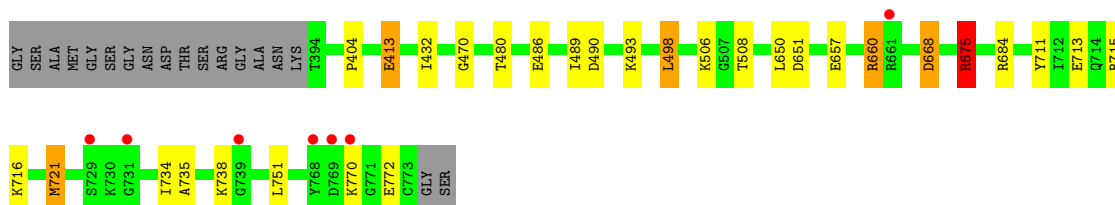
- Molecule 1: Glutamate receptor 2

Chain B: 



- Molecule 1: Glutamate receptor 2

Chain C: 



4 Data and refinement statistics

Property	Value	Source
Space group	P 21 21 2	Depositor
Cell constants a, b, c, α , β , γ	113.68Å 164.95Å 47.50Å 90.00° 90.00° 90.00°	Depositor
Resolution (Å)	93.66 – 1.85 36.45 – 1.85	Depositor EDS
% Data completeness (in resolution range)	96.8 (93.66-1.85) 96.9 (36.45-1.85)	Depositor EDS
R_{merge}	0.06	Depositor
R_{sym}	(Not available)	Depositor
$\langle I/\sigma(I) \rangle$ ¹	1.59 (at 1.85Å)	Xtrriage
Refinement program	REFMAC	Depositor
R, R_{free}	0.196 , 0.232 0.204 , 0.231	Depositor DCC
R_{free} test set	3834 reflections (5.12%)	wwPDB-VP
Wilson B-factor (Å ²)	30.5	Xtrriage
Anisotropy	0.077	Xtrriage
Bulk solvent k_{sol} (e/Å ³), B_{sol} (Å ²)	0.36 , 41.0	EDS
L-test for twinning ²	$\langle L \rangle = 0.48$, $\langle L^2 \rangle = 0.31$	Xtrriage
Estimated twinning fraction	No twinning to report.	Xtrriage
F_o, F_c correlation	0.95	EDS
Total number of atoms	6503	wwPDB-VP
Average B, all atoms (Å ²)	22.0	wwPDB-VP

Xtrriage's analysis on translational NCS is as follows: *The largest off-origin peak in the Patterson function is 14.07% of the height of the origin peak. No significant pseudotranslation is detected.*

¹Intensities estimated from amplitudes.

²Theoretical values of $\langle |L| \rangle$, $\langle L^2 \rangle$ for acentric reflections are 0.5, 0.333 respectively for untwinned datasets, and 0.375, 0.2 for perfectly twinned datasets.

5 Model quality [i](#)

5.1 Standard geometry [i](#)

Bond lengths and bond angles in the following residue types are not validated in this section: ZN, 1YX

The Z score for a bond length (or angle) is the number of standard deviations the observed value is removed from the expected value. A bond length (or angle) with $|Z| > 5$ is considered an outlier worth inspection. RMSZ is the root-mean-square of all Z scores of the bond lengths (or angles).

Mol	Chain	Bond lengths		Bond angles	
		RMSZ	# Z >5	RMSZ	# Z >5
1	A	0.96	4/2054 (0.2%)	0.96	5/2762 (0.2%)
1	B	1.02	4/2045 (0.2%)	0.98	4/2751 (0.1%)
1	C	0.93	2/2044 (0.1%)	0.97	6/2749 (0.2%)
All	All	0.97	10/6143 (0.2%)	0.97	15/8262 (0.2%)

All (10) bond length outliers are listed below:

Mol	Chain	Res	Type	Atoms	Z	Observed(Å)	Ideal(Å)
1	C	508	THR	C-N	9.21	1.51	1.34
1	C	713	GLU	CD-OE1	-8.04	1.16	1.25
1	B	696	SER	CB-OG	7.44	1.51	1.42
1	B	508	THR	C-N	6.76	1.47	1.34
1	B	713	GLU	CD-OE1	-6.07	1.19	1.25
1	A	676	SER	CB-OG	5.76	1.49	1.42
1	B	702	TYR	CE1-CZ	-5.73	1.31	1.38
1	A	678	GLU	CD-OE2	5.45	1.31	1.25
1	A	644	GLU	CD-OE1	5.36	1.31	1.25
1	A	508	THR	C-N	5.01	1.43	1.34

All (15) bond angle outliers are listed below:

Mol	Chain	Res	Type	Atoms	Z	Observed(°)	Ideal(°)
1	B	660	ARG	NE-CZ-NH1	7.09	123.85	120.30
1	A	738	LYS	CD-CE-NZ	6.36	126.33	111.70
1	A	498	LEU	CB-CG-CD2	6.30	121.71	111.00
1	B	498	LEU	CA-CB-CG	6.23	129.62	115.30
1	C	660	ARG	NE-CZ-NH1	6.10	123.35	120.30
1	A	407	MET	CG-SD-CE	-5.97	90.64	100.20
1	C	684	ARG	NE-CZ-NH1	5.88	123.24	120.30
1	C	721	MET	CG-SD-CE	-5.88	90.80	100.20

Continued on next page...

Continued from previous page...

Mol	Chain	Res	Type	Atoms	Z	Observed(°)	Ideal(°)
1	C	498	LEU	CA-CB-CG	5.64	128.27	115.30
1	C	675	ARG	NE-CZ-NH1	5.62	123.11	120.30
1	B	760	ASP	CB-CG-OD1	5.12	122.90	118.30
1	C	490	ASP	CB-CG-OD1	5.08	122.87	118.30
1	A	768	TYR	CB-CA-C	5.04	120.49	110.40
1	A	454	ASP	CB-CG-OD2	-5.01	113.79	118.30
1	B	660	ARG	NE-CZ-NH2	-5.01	117.79	120.30

There are no chirality outliers.

There are no planarity outliers.

5.2 Too-close contacts

In the following table, the Non-H and H(model) columns list the number of non-hydrogen atoms and hydrogen atoms in the chain respectively. The H(added) column lists the number of hydrogen atoms added and optimized by MolProbity. The Clashes column lists the number of clashes within the asymmetric unit, whereas Symm-Clashes lists symmetry-related clashes.

Mol	Chain	Non-H	H(model)	H(added)	Clashes	Symm-Clashes
1	A	2018	0	2050	35	0
1	B	2009	0	2037	21	0
1	C	2008	0	2033	34	0
2	A	10	0	5	1	0
2	B	10	0	5	1	0
2	C	10	0	5	1	0
3	A	58	0	54	24	0
3	B	29	0	27	12	0
4	B	3	0	0	0	0
4	C	2	0	0	0	0
5	A	105	0	0	10	0
5	B	142	0	0	4	0
5	C	99	0	0	11	0
All	All	6503	0	6216	95	0

The all-atom clashscore is defined as the number of clashes found per 1000 atoms (including hydrogen atoms). The all-atom clashscore for this structure is 8.

All (95) close contacts within the same asymmetric unit are listed below, sorted by their clash magnitude.

Atom-1	Atom-2	Interatomic distance (Å)	Clash overlap (Å)
1:A:493:LYS:HB3	3:A:802[A]:1YX:H5	1.46	0.95
1:B:493:LYS:HB3	3:B:805:1YX:H5	1.49	0.94
3:A:802[B]:1YX:H22	3:A:802[B]:1YX:O4	1.74	0.85
1:A:657:GLU:HG2	5:A:1036:HOH:O	1.75	0.84
1:B:493:LYS:CB	3:B:805:1YX:H5	2.12	0.80
1:A:652:SER:HB3	5:A:1053:HOH:O	1.82	0.79
1:B:486:GLU:OE2	5:B:957:HOH:O	2.07	0.73
5:A:1062:HOH:O	1:C:657:GLU:HG2	1.92	0.70
1:C:651:ASP:HA	5:C:964:HOH:O	1.91	0.69
1:A:715:ARG:HB2	5:A:1101:HOH:O	1.93	0.68
1:A:752:LYS:O	1:A:756:GLN:HG3	1.94	0.68
1:A:493:LYS:CB	3:A:802[A]:1YX:H5	2.23	0.68
1:B:754:ASN:CB	3:B:805:1YX:H1	2.22	0.67
1:A:454:ASP:HB3	1:A:457:THR:HG22	1.76	0.66
1:C:738:LYS:HE2	5:C:938:HOH:O	1.94	0.66
1:C:716:LYS:HG3	1:C:772:GLU:HG3	1.78	0.66
1:B:453:ARG:HD2	5:B:993:HOH:O	1.96	0.64
3:A:802[A]:1YX:O4	3:A:802[A]:1YX:H22	1.97	0.64
1:A:652:SER:O	1:A:652:SER:OG	2.18	0.62
1:A:751:LEU:HD23	3:A:802[A]:1YX:H6	1.83	0.61
1:C:651:ASP:CA	5:C:964:HOH:O	2.48	0.61
1:A:493:LYS:HB3	3:A:802[A]:1YX:C3	2.28	0.60
1:C:675:ARG:CG	1:C:675:ARG:HH11	2.14	0.60
1:C:470:GLY:HA2	5:C:995:HOH:O	2.01	0.59
1:C:668:ASP:OD1	5:C:965:HOH:O	2.17	0.59
1:A:754:ASN:CB	3:A:802[A]:1YX:H1	2.33	0.58
1:C:721:MET:CE	5:C:939:HOH:O	2.51	0.57
1:A:432:ILE:CD1	1:A:734:ILE:CD1	2.83	0.57
1:B:466:GLU:OE1	5:B:1033:HOH:O	2.17	0.57
1:A:756:GLN:NE2	5:A:1072:HOH:O	2.38	0.55
1:A:751:LEU:CD2	3:A:802[A]:1YX:H6	2.36	0.55
3:B:805:1YX:H22	3:B:805:1YX:O4	2.07	0.54
1:B:751:LEU:CD2	3:B:805:1YX:H6	2.37	0.54
1:B:751:LEU:HD23	3:B:805:1YX:H6	1.90	0.53
1:C:675:ARG:HH11	1:C:675:ARG:HG2	1.72	0.53
1:B:657:GLU:OE1	1:B:660:ARG:NH1	2.40	0.53
1:B:754:ASN:HB2	3:B:805:1YX:H1	1.91	0.52
1:A:750:VAL:HG12	3:A:802[A]:1YX:H7	1.92	0.52
1:C:480:THR:HG1	2:C:803:GLU:N	2.07	0.52
1:A:651:ASP:O	1:A:651:ASP:OD1	2.28	0.52
1:A:754:ASN:HB2	3:A:802[A]:1YX:H1	1.92	0.51
3:A:802[B]:1YX:H7	1:C:751:LEU:CD2	2.41	0.51

Continued on next page...

Continued from previous page...

Atom-1	Atom-2	Interatomic distance (Å)	Clash overlap (Å)
1:C:721:MET:HE3	5:C:939:HOH:O	2.11	0.50
3:A:802[B]:1YX:H2	1:C:751:LEU:HA	1.94	0.50
1:B:493:LYS:CB	3:B:805:1YX:C3	2.86	0.49
1:A:637:GLU:CG	1:A:641:LYS:HE2	2.43	0.49
1:C:413:GLU:CG	5:C:934:HOH:O	2.61	0.49
1:A:493:LYS:CB	3:A:802[A]:1YX:C3	2.88	0.49
1:A:480:THR:HG1	2:A:801:GLU:N	2.10	0.48
1:A:432:ILE:HD11	1:A:734:ILE:CD1	2.43	0.48
1:B:754:ASN:HB2	1:B:759:LEU:HD12	1.95	0.48
1:B:696:SER:HB2	5:B:916:HOH:O	2.14	0.47
1:B:506:LYS:HG2	1:B:721:MET:HE3	1.95	0.47
3:A:802[B]:1YX:H5	1:C:493:LYS:HB3	1.97	0.47
1:A:470:GLY:HA2	5:A:1067:HOH:O	2.13	0.47
1:C:657:GLU:OE1	1:C:660:ARG:NH1	2.43	0.47
1:B:480:THR:HG1	2:B:804:GLU:N	2.14	0.46
1:A:753:LEU:HD22	1:A:758:LEU:HD22	1.96	0.46
1:C:651:ASP:CB	5:C:964:HOH:O	2.64	0.46
1:A:637:GLU:HG3	1:A:641:LYS:HE2	1.98	0.46
1:C:651:ASP:HB2	5:C:989:HOH:O	2.15	0.46
1:A:434:LYS:NZ	5:A:1088:HOH:O	2.41	0.46
1:A:493:LYS:NZ	1:C:486:GLU:OE2	2.43	0.45
1:A:652:SER:N	5:A:1053:HOH:O	2.50	0.45
1:C:404:PRO:HB3	1:C:711:TYR:CE1	2.52	0.45
1:B:493:LYS:HB2	3:B:805:1YX:C3	2.46	0.45
3:A:802[A]:1YX:H3	5:A:1099:HOH:O	2.17	0.45
1:B:424:TYR:CZ	1:B:496:MET:HE3	2.53	0.44
1:C:432:ILE:CD1	1:C:734:ILE:CD1	2.95	0.44
3:A:802[B]:1YX:C3	1:C:751:LEU:CD2	2.96	0.44
1:C:650:LEU:HG	1:C:651:ASP:O	2.18	0.44
1:B:640:SER:O	1:B:669:LYS:HE2	2.17	0.43
1:A:754:ASN:HB2	3:A:802[A]:1YX:C1	2.47	0.43
3:A:802[B]:1YX:H7	1:C:751:LEU:HD21	2.01	0.43
1:C:432:ILE:HD13	1:C:734:ILE:CD1	2.49	0.43
1:C:721:MET:HE1	5:C:939:HOH:O	2.14	0.43
3:A:802[B]:1YX:C3	1:C:493:LYS:HB3	2.49	0.43
1:C:432:ILE:CD1	1:C:734:ILE:HD11	2.49	0.43
1:A:498:LEU:HD23	1:A:705:GLU:HG2	2.01	0.43
1:B:754:ASN:HB3	3:B:805:1YX:C1	2.49	0.43
1:C:432:ILE:HD11	1:C:734:ILE:HD11	2.01	0.43
1:A:432:ILE:CD1	1:A:734:ILE:HD13	2.49	0.42
1:B:754:ASN:CB	3:B:805:1YX:C1	2.94	0.42

Continued on next page...

Continued from previous page...

Atom-1	Atom-2	Interatomic distance (Å)	Clash overlap (Å)
1:B:754:ASN:HB3	3:B:805:1YX:H1	2.01	0.42
1:A:432:ILE:HD13	1:A:734:ILE:HD13	2.01	0.42
1:A:646:ALA:O	1:A:700:TYR:HA	2.20	0.42
3:A:802[B]:1YX:C3	1:C:751:LEU:HD23	2.50	0.41
1:A:751:LEU:HD23	3:A:802[A]:1YX:H3	2.01	0.41
3:A:802[A]:1YX:F1	3:A:802[A]:1YX:C14	2.59	0.41
1:C:715:ARG:NH1	1:C:770:LYS:O	2.53	0.41
3:A:802[A]:1YX:O4	3:A:802[A]:1YX:C17	2.68	0.41
1:A:754:ASN:CB	3:A:802[A]:1YX:C1	2.99	0.40
1:C:489:ILE:HD12	1:C:735:ALA:HB1	2.02	0.40
1:A:408:MET:HG2	5:A:1104:HOH:O	2.21	0.40
1:C:506:LYS:HG2	1:C:721:MET:HE3	2.03	0.40

There are no symmetry-related clashes.

5.3 Torsion angles [i](#)

5.3.1 Protein backbone [i](#)

In the following table, the Percentiles column shows the percent Ramachandran outliers of the chain as a percentile score with respect to all X-ray entries followed by that with respect to entries of similar resolution.

The Analysed column shows the number of residues for which the backbone conformation was analysed, and the total number of residues.

Mol	Chain	Analysed	Favoured	Allowed	Outliers	Percentiles	
1	A	256/275 (93%)	250 (98%)	6 (2%)	0	100	100
1	B	255/275 (93%)	251 (98%)	4 (2%)	0	100	100
1	C	255/275 (93%)	251 (98%)	4 (2%)	0	100	100
All	All	766/825 (93%)	752 (98%)	14 (2%)	0	100	100

There are no Ramachandran outliers to report.

5.3.2 Protein sidechains [i](#)

In the following table, the Percentiles column shows the percent sidechain outliers of the chain as a percentile score with respect to all X-ray entries followed by that with respect to entries of similar resolution.

The Analysed column shows the number of residues for which the sidechain conformation was analysed, and the total number of residues.

Mol	Chain	Analysed	Rotameric	Outliers	Percentiles	
1	A	217/227 (96%)	209 (96%)	8 (4%)	34	17
1	B	216/227 (95%)	215 (100%)	1 (0%)	88	86
1	C	216/227 (95%)	212 (98%)	4 (2%)	57	43
All	All	649/681 (95%)	636 (98%)	13 (2%)	55	40

All (13) residues with a non-rotameric sidechain are listed below:

Mol	Chain	Res	Type
1	A	457	THR
1	A	458	LYS
1	A	493	LYS
1	A	498	LEU
1	A	675	ARG
1	A	738	LYS
1	A	752	LYS
1	A	770	LYS
1	B	498	LEU
1	C	413	GLU
1	C	498	LEU
1	C	668	ASP
1	C	675	ARG

Sometimes sidechains can be flipped to improve hydrogen bonding and reduce clashes. All (2) such sidechains are listed below:

Mol	Chain	Res	Type
1	B	411	ASN
1	B	744	ASN

5.3.3 RNA ⓘ

There are no RNA molecules in this entry.

5.4 Non-standard residues in protein, DNA, RNA chains ⓘ

There are no non-standard protein/DNA/RNA residues in this entry.

5.5 Carbohydrates [i](#)

There are no monosaccharides in this entry.

5.6 Ligand geometry [i](#)

Of 11 ligands modelled in this entry, 5 are monoatomic - leaving 6 for Mogul analysis.

In the following table, the Counts columns list the number of bonds (or angles) for which Mogul statistics could be retrieved, the number of bonds (or angles) that are observed in the model and the number of bonds (or angles) that are defined in the Chemical Component Dictionary. The Link column lists molecule types, if any, to which the group is linked. The Z score for a bond length (or angle) is the number of standard deviations the observed value is removed from the expected value. A bond length (or angle) with $|Z| > 2$ is considered an outlier worth inspection. RMSZ is the root-mean-square of all Z scores of the bond lengths (or angles).

Mol	Type	Chain	Res	Link	Bond lengths			Bond angles		
					Counts	RMSZ	# Z > 2	Counts	RMSZ	# Z > 2
2	GLU	A	801	-	8,9,9	1.28	0	10,11,11	1.13	0
2	GLU	B	804	-	8,9,9	1.07	0	10,11,11	1.21	1 (10%)
3	1YX	A	802[A]	-	31,31,31	0.67	1 (3%)	38,45,45	2.16	5 (13%)
2	GLU	C	803	-	8,9,9	1.37	0	10,11,11	1.31	2 (20%)
3	1YX	A	802[B]	-	31,31,31	1.34	2 (6%)	38,45,45	1.92	6 (15%)
3	1YX	B	805	-	31,31,31	1.32	4 (12%)	38,45,45	2.00	2 (5%)

In the following table, the Chirals column lists the number of chiral outliers, the number of chiral centers analysed, the number of these observed in the model and the number defined in the Chemical Component Dictionary. Similar counts are reported in the Torsion and Rings columns. '-' means no outliers of that kind were identified.

Mol	Type	Chain	Res	Link	Chirals	Torsions	Rings
2	GLU	A	801	-	-	1/9/9/9	-
2	GLU	B	804	-	-	2/9/9/9	-
3	1YX	A	802[A]	-	-	8/22/42/42	0/3/3/3
2	GLU	C	803	-	-	1/9/9/9	-
3	1YX	A	802[B]	-	-	8/22/42/42	0/3/3/3
3	1YX	B	805	-	-	8/22/42/42	0/3/3/3

All (7) bond length outliers are listed below:

Mol	Chain	Res	Type	Atoms	Z	Observed(Å)	Ideal(Å)
3	A	802[B]	1YX	C2-S1	-6.66	1.64	1.78

Continued on next page...

Continued from previous page...

Mol	Chain	Res	Type	Atoms	Z	Observed(Å)	Ideal(Å)
3	B	805	1YX	C2-S1	-3.71	1.70	1.78
3	B	805	1YX	C4-N1	-3.62	1.41	1.47
3	B	805	1YX	O3-C5	-3.54	1.41	1.46
3	B	805	1YX	S1-N1	3.10	1.68	1.61
3	A	802[B]	1YX	O3-C5	-2.18	1.43	1.46
3	A	802[A]	1YX	C4-N1	-2.01	1.43	1.47

All (16) bond angle outliers are listed below:

Mol	Chain	Res	Type	Atoms	Z	Observed(°)	Ideal(°)
3	B	805	1YX	O2-S1-O1	10.83	127.37	119.24
3	A	802[A]	1YX	O2-S1-O1	10.67	127.25	119.24
3	A	802[B]	1YX	C3-C2-S1	-6.77	92.70	109.62
3	A	802[B]	1YX	O2-S1-O1	6.05	123.78	119.24
3	A	802[B]	1YX	O1-S1-N1	5.50	114.39	107.76
3	A	802[A]	1YX	O2-S1-N1	-4.49	102.36	107.76
3	A	802[A]	1YX	O1-S1-N1	4.01	112.59	107.76
3	B	805	1YX	O3-C5-C6	3.09	107.20	104.33
3	A	802[A]	1YX	C4-N1-S1	-2.69	115.27	120.63
3	A	802[A]	1YX	O3-C5-C6	2.14	106.31	104.33
3	A	802[B]	1YX	C14-N3-C11	2.08	127.43	121.48
2	C	803	GLU	CB-CA-N	2.07	115.61	110.17
3	A	802[B]	1YX	C17-C16-N4	-2.07	108.26	112.69
2	B	804	GLU	OE2-CD-CG	2.06	120.66	114.03
2	C	803	GLU	OE2-CD-CG	2.04	120.57	114.03
3	A	802[B]	1YX	O3-C5-C6	2.02	106.20	104.33

There are no chirality outliers.

All (28) torsion outliers are listed below:

Mol	Chain	Res	Type	Atoms
3	A	802[A]	1YX	C1-C2-S1-O1
3	A	802[A]	1YX	C1-C2-S1-O2
3	A	802[A]	1YX	C3-C2-S1-O1
3	A	802[A]	1YX	C3-C2-S1-O2
3	A	802[A]	1YX	C17-C16-N4-C18
3	A	802[B]	1YX	C1-C2-S1-O2
3	A	802[B]	1YX	C3-C2-S1-O2
3	A	802[B]	1YX	C17-C16-N4-C18
3	B	805	1YX	C1-C2-S1-O1
3	B	805	1YX	C1-C2-S1-O2
3	B	805	1YX	C3-C2-S1-O1

Continued on next page...

Continued from previous page...

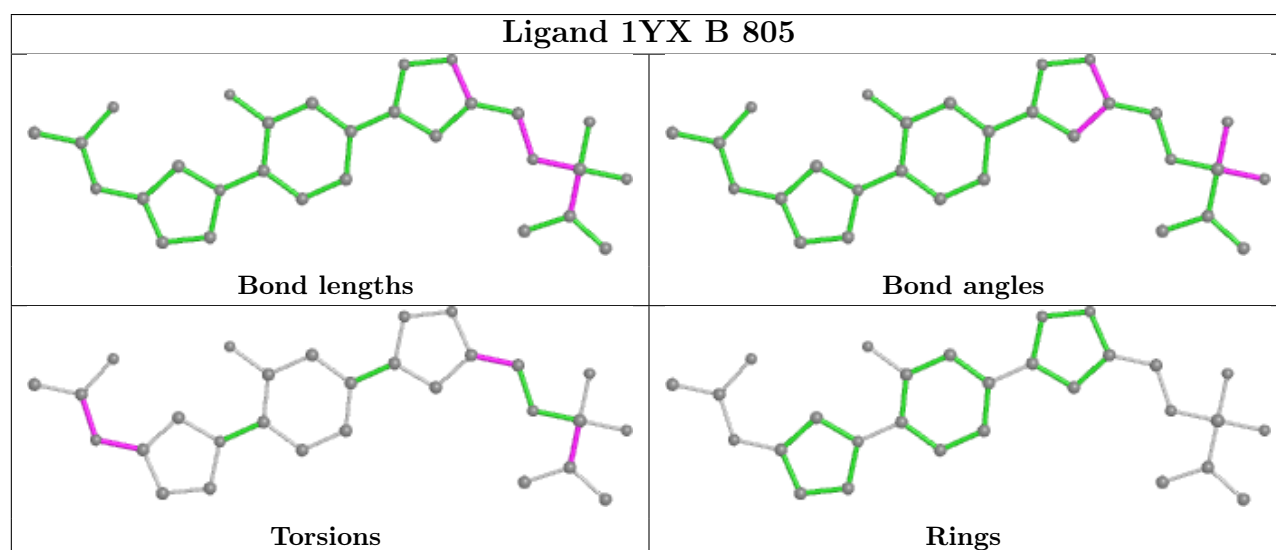
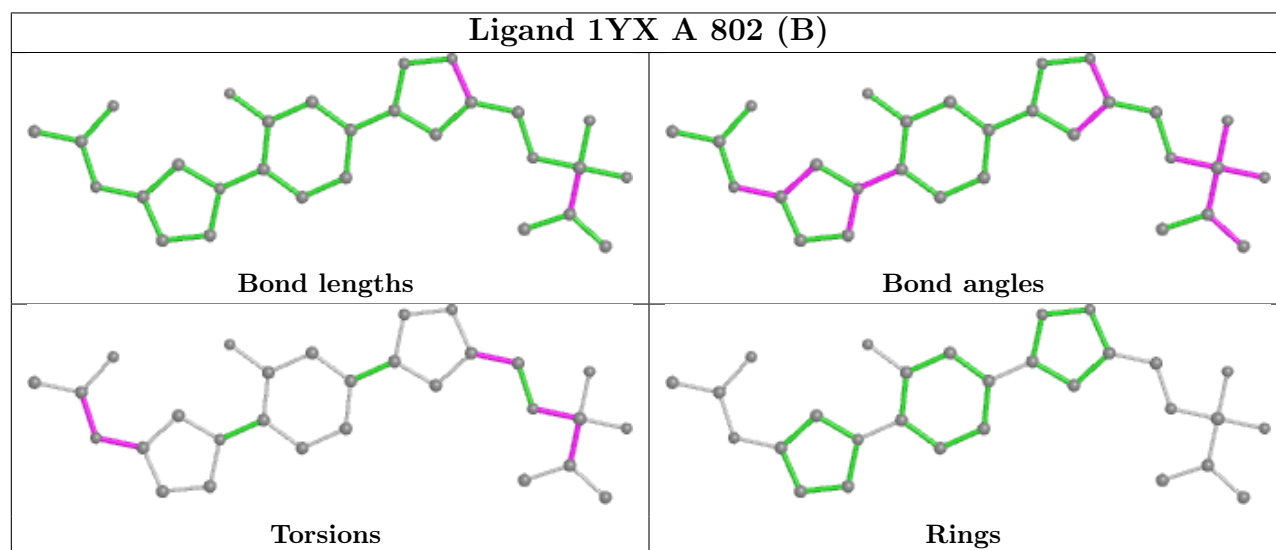
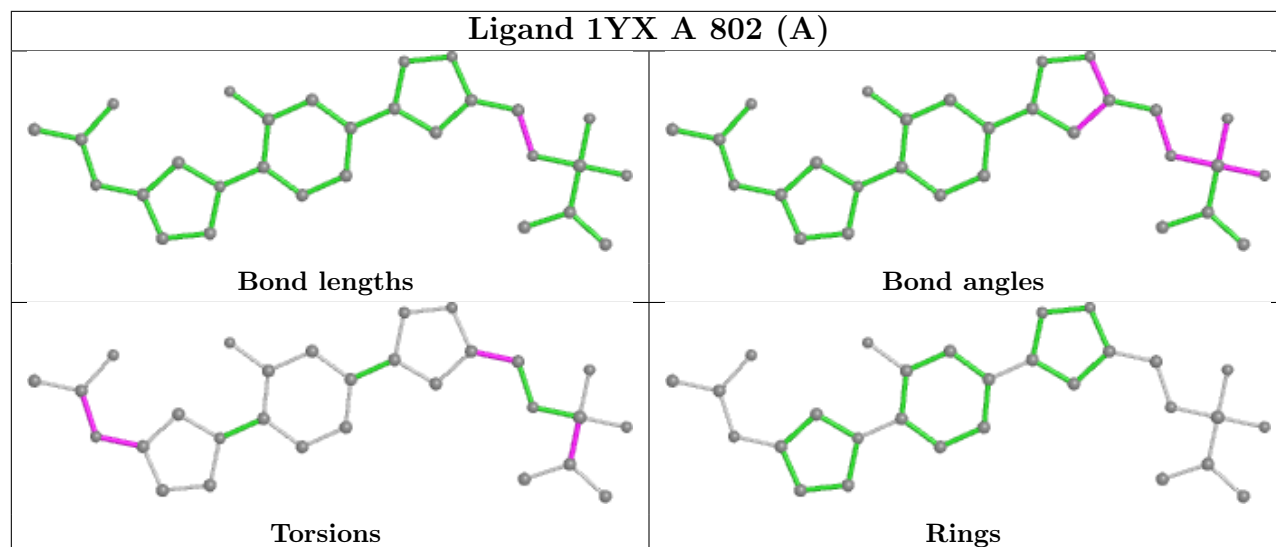
Mol	Chain	Res	Type	Atoms
3	B	805	1YX	C3-C2-S1-O2
3	A	802[A]	1YX	C19-C18-N4-C16
3	A	802[B]	1YX	C19-C18-N4-C16
3	B	805	1YX	C19-C18-N4-C16
3	A	802[A]	1YX	O4-C18-N4-C16
3	B	805	1YX	O4-C18-N4-C16
3	A	802[B]	1YX	O4-C18-N4-C16
3	B	805	1YX	C17-C16-N4-C18
3	A	802[B]	1YX	C1-C2-S1-O1
2	B	804	GLU	O-C-CA-N
3	A	802[B]	1YX	C4-N1-S1-C2
2	B	804	GLU	OXT-C-CA-CB
2	C	803	GLU	OXT-C-CA-CB
3	A	802[A]	1YX	N1-C4-C5-C6
3	A	802[B]	1YX	N1-C4-C5-C6
3	B	805	1YX	N1-C4-C5-C6
2	A	801	GLU	OE2-CD-CG-CB

There are no ring outliers.

6 monomers are involved in 39 short contacts:

Mol	Chain	Res	Type	Clashes	Symm-Clashes
2	A	801	GLU	1	0
2	B	804	GLU	1	0
3	A	802[A]	1YX	16	0
2	C	803	GLU	1	0
3	A	802[B]	1YX	8	0
3	B	805	1YX	12	0

The following is a two-dimensional graphical depiction of Mogul quality analysis of bond lengths, bond angles, torsion angles, and ring geometry for all instances of the Ligand of Interest. In addition, ligands with molecular weight > 250 and outliers as shown on the validation Tables will also be included. For torsion angles, if less than 5% of the Mogul distribution of torsion angles is within 10 degrees of the torsion angle in question, then that torsion angle is considered an outlier. Any bond that is central to one or more torsion angles identified as an outlier by Mogul will be highlighted in the graph. For rings, the root-mean-square deviation (RMSD) between the ring in question and similar rings identified by Mogul is calculated over all ring torsion angles. If the average RMSD is greater than 60 degrees and the minimal RMSD between the ring in question and any Mogul-identified rings is also greater than 60 degrees, then that ring is considered an outlier. The outliers are highlighted in purple. The color gray indicates Mogul did not find sufficient equivalents in the CSD to analyse the geometry.



5.7 Other polymers [i](#)

There are no such residues in this entry.

5.8 Polymer linkage issues [i](#)

There are no chain breaks in this entry.

6 Fit of model and data

6.1 Protein, DNA and RNA chains

In the following table, the column labelled ‘#RSRZ > 2’ contains the number (and percentage) of RSRZ outliers, followed by percent RSRZ outliers for the chain as percentile scores relative to all X-ray entries and entries of similar resolution. The OWAB column contains the minimum, median, 95th percentile and maximum values of the occupancy-weighted average B-factor per residue. The column labelled ‘Q < 0.9’ lists the number of (and percentage) of residues with an average occupancy less than 0.9.

Mol	Chain	Analysed	<RSRZ>	#RSRZ>2	OWAB(Å ²)	Q<0.9
1	A	258/275 (93%)	0.06	12 (4%) 31 30	4, 20, 53, 63	0
1	B	257/275 (93%)	-0.15	8 (3%) 49 47	2, 14, 42, 59	0
1	C	257/275 (93%)	-0.06	7 (2%) 54 53	4, 20, 47, 63	0
All	All	772/825 (93%)	-0.05	27 (3%) 44 41	2, 18, 47, 63	0

All (27) RSRZ outliers are listed below:

Mol	Chain	Res	Type	RSRZ
1	A	456	ASP	4.4
1	A	455	ALA	4.4
1	C	770	LYS	4.1
1	A	731	GLY	3.8
1	B	731	GLY	3.7
1	B	768	TYR	3.7
1	A	665	ALA	3.7
1	A	768	TYR	3.6
1	B	456	ASP	3.5
1	A	664	ILE	3.4
1	C	731	GLY	3.4
1	B	455	ALA	3.4
1	C	768	TYR	3.3
1	C	739	GLY	3.2
1	A	729	SER	3.1
1	C	661	ARG	2.9
1	A	643	THR	2.6
1	B	770	LYS	2.6
1	B	739	GLY	2.5
1	A	498	LEU	2.3
1	A	644	GLU	2.2
1	C	729	SER	2.2
1	B	416	GLU	2.2

Continued on next page...

Continued from previous page...

Mol	Chain	Res	Type	RSRZ
1	A	730	LYS	2.1
1	B	729	SER	2.1
1	C	769	ASP	2.1
1	A	739	GLY	2.0

6.2 Non-standard residues in protein, DNA, RNA chains [i](#)

There are no non-standard protein/DNA/RNA residues in this entry.

6.3 Carbohydrates [i](#)

There are no monosaccharides in this entry.

6.4 Ligands [i](#)

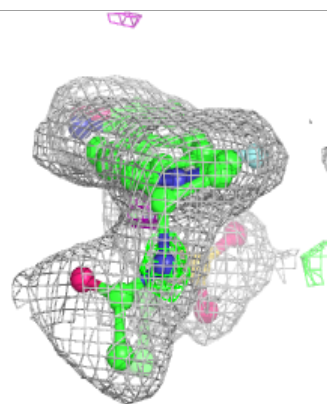
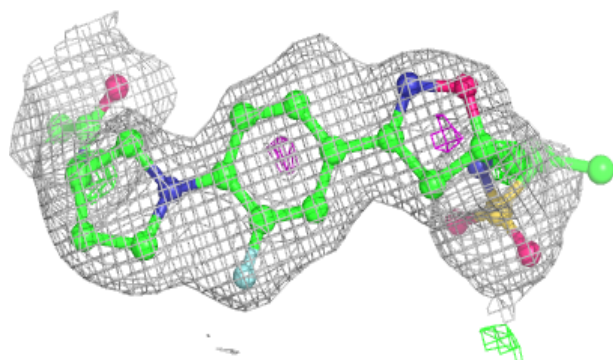
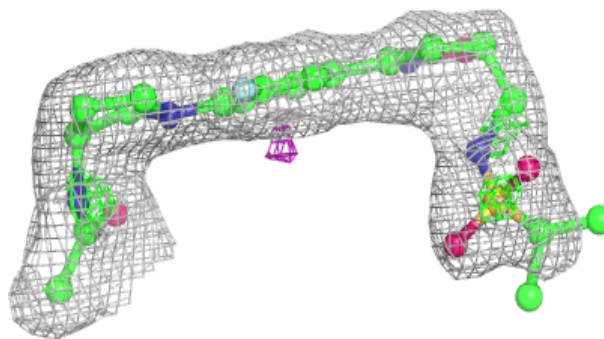
In the following table, the Atoms column lists the number of modelled atoms in the group and the number defined in the chemical component dictionary. The B-factors column lists the minimum, median, 95th percentile and maximum values of B factors of atoms in the group. The column labelled 'Q< 0.9' lists the number of atoms with occupancy less than 0.9.

Mol	Type	Chain	Res	Atoms	RSCC	RSR	B-factors(Å ²)	Q<0.9
4	ZN	C	802	1/1	0.74	0.08	104,104,104,104	0
3	1YX	A	802[A]	29/29	0.95	0.24	27,30,45,46	29
3	1YX	A	802[B]	29/29	0.95	0.24	24,28,42,46	29
3	1YX	B	805	29/29	0.95	0.27	20,25,42,45	29
2	GLU	A	801	10/10	0.95	0.15	7,10,14,14	0
4	ZN	B	803	1/1	0.96	0.07	47,47,47,47	0
4	ZN	B	802	1/1	0.97	0.13	43,43,43,43	0
2	GLU	C	803	10/10	0.97	0.13	4,6,9,10	0
4	ZN	B	801	1/1	0.97	0.13	39,39,39,39	0
2	GLU	B	804	10/10	0.98	0.11	3,5,6,7	0
4	ZN	C	801	1/1	0.99	0.13	37,37,37,37	0

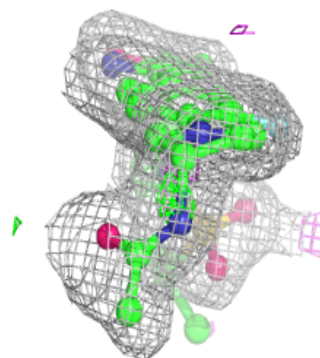
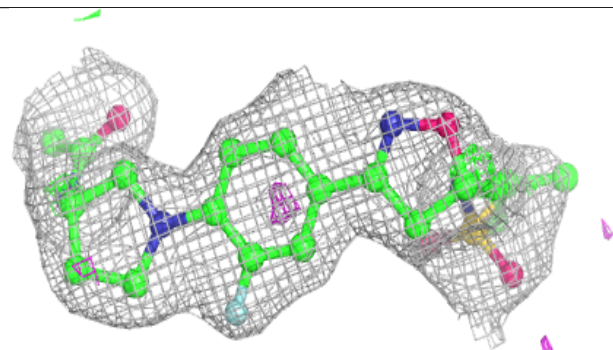
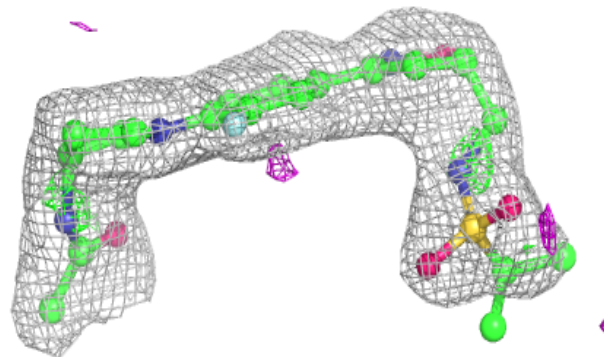
The following is a graphical depiction of the model fit to experimental electron density of all instances of the Ligand of Interest. In addition, ligands with molecular weight > 250 and outliers as shown on the geometry validation Tables will also be included. Each fit is shown from different orientation to approximate a three-dimensional view.

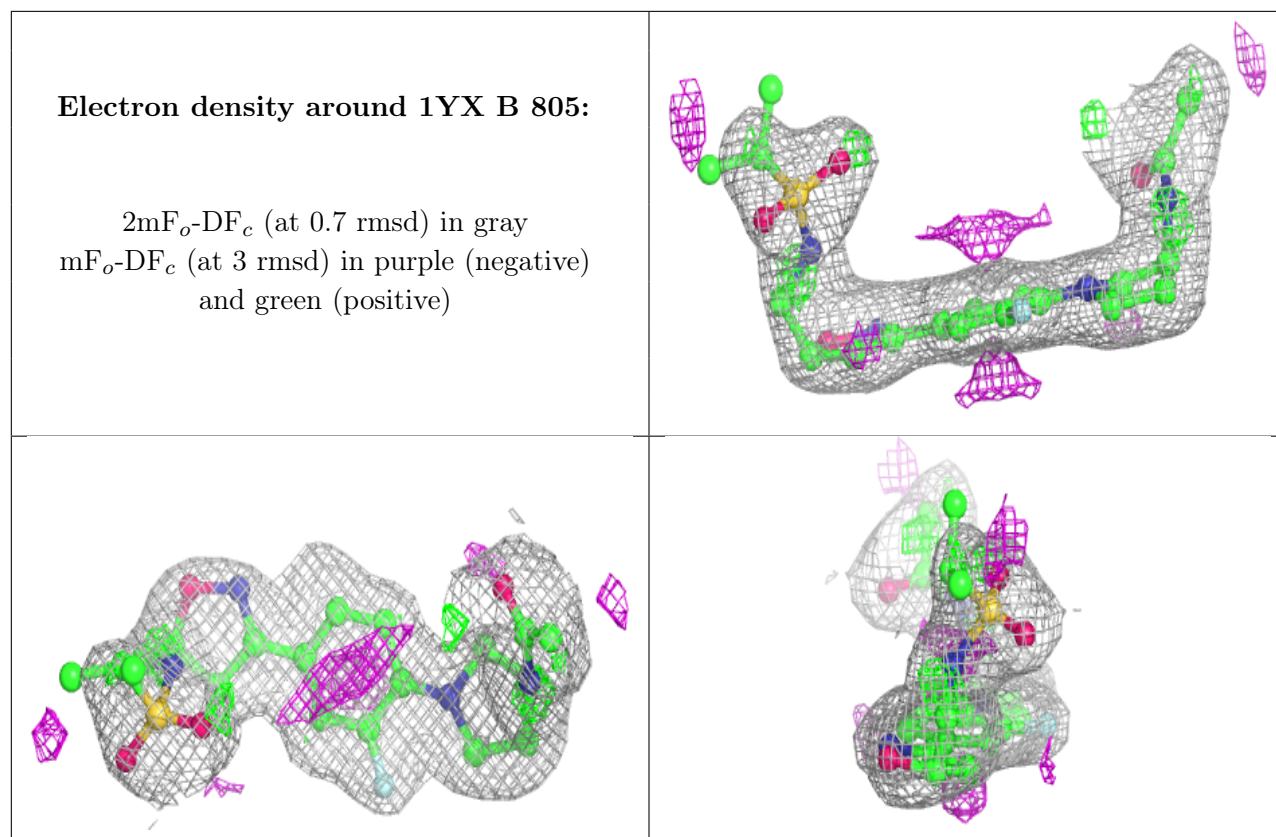
Electron density around 1YX A 802 (A):

$2mF_o-DF_c$ (at 0.7 rmsd) in gray
 mF_o-DF_c (at 3 rmsd) in purple (negative)
and green (positive)

**Electron density around 1YX A 802 (B):**

$2mF_o-DF_c$ (at 0.7 rmsd) in gray
 mF_o-DF_c (at 3 rmsd) in purple (negative)
and green (positive)





6.5 Other polymers [i](#)

There are no such residues in this entry.