



Full wwPDB EM Validation Report ⓘ

Mar 20, 2024 – 08:05 AM JST

PDB ID : 6LYP
EMDB ID : EMD-30017
Title : Cryo-EM structure of AtMSL1 wild type
Authors : Sun, L.
Deposited on : 2020-02-15
Resolution : 3.30 Å (reported)

This is a Full wwPDB EM Validation Report for a publicly released PDB entry.

We welcome your comments at validation@mail.wwpdb.org

A user guide is available at

<https://www.wwpdb.org/validation/2017/EMValidationReportHelp>

with specific help available everywhere you see the ⓘ symbol.

The types of validation reports are described at

<http://www.wwpdb.org/validation/2017/FAQs#types>.

The following versions of software and data (see [references ⓘ](#)) were used in the production of this report:

EMDB validation analysis : 0.0.1.dev70
MolProbity : 4.02b-467
Percentile statistics : 20191225.v01 (using entries in the PDB archive December 25th 2019)
MapQ : 1.9.13
Ideal geometry (proteins) : Engh & Huber (2001)
Ideal geometry (DNA, RNA) : Parkinson et al. (1996)
Validation Pipeline (wwPDB-VP) : 2.36

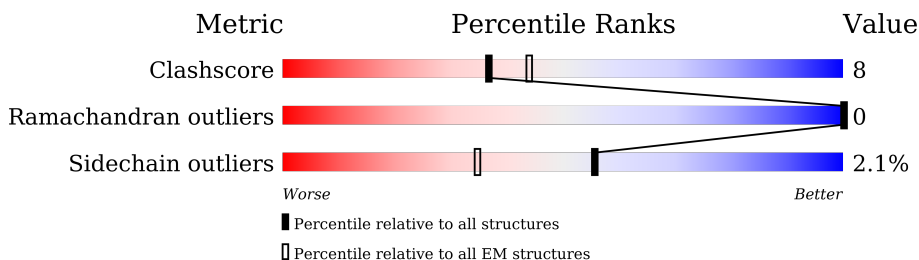
1 Overall quality at a glance

The following experimental techniques were used to determine the structure:

ELECTRON MICROSCOPY

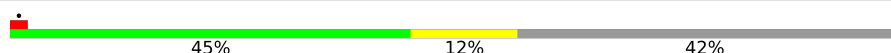
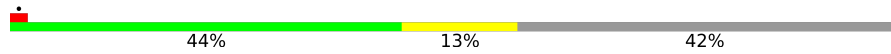
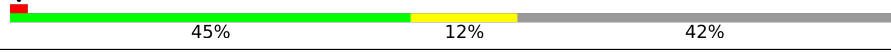
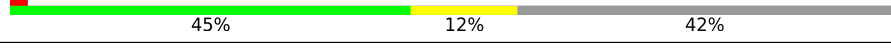
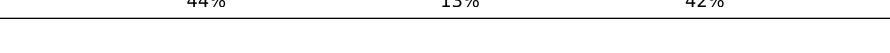
The reported resolution of this entry is 3.30 Å.

Percentile scores (ranging between 0-100) for global validation metrics of the entry are shown in the following graphic. The table shows the number of entries on which the scores are based.



Metric	Whole archive (#Entries)	EM structures (#Entries)
Clashscore	158937	4297
Ramachandran outliers	154571	4023
Sidechain outliers	154315	3826

The table below summarises the geometric issues observed across the polymeric chains and their fit to the map. The red, orange, yellow and green segments of the bar indicate the fraction of residues that contain outliers for ≥ 3 , 2, 1 and 0 types of geometric quality criteria respectively. A grey segment represents the fraction of residues that are not modelled. The numeric value for each fraction is indicated below the corresponding segment, with a dot representing fractions $\leq 5\%$. The upper red bar (where present) indicates the fraction of residues that have poor fit to the EM map (all-atom inclusion $< 40\%$). The numeric value is given above the bar.

Mol	Chain	Length	Quality of chain
1	A	497	
1	B	497	
1	C	497	
1	D	497	
1	E	497	
1	F	497	
1	G	497	

2 Entry composition [i](#)

There is only 1 type of molecule in this entry. The entry contains 15169 atoms, of which 0 are hydrogens and 0 are deuteriums.

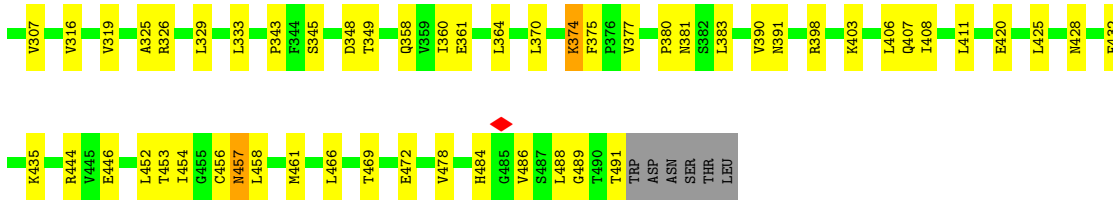
In the tables below, the AltConf column contains the number of residues with at least one atom in alternate conformation and the Trace column contains the number of residues modelled with at most 2 atoms.

- Molecule 1 is a protein called Mechanosensitive ion channel protein 1, mitochondrial.

Mol	Chain	Residues	Atoms					AltConf	Trace
			Total	C	N	O	S		
1	A	287	2167	1392	364	399	12	0	0
1	B	287	2167	1392	364	399	12	0	0
1	C	287	2167	1392	364	399	12	0	0
1	D	287	2167	1392	364	399	12	0	0
1	E	287	2167	1392	364	399	12	0	0
1	F	287	2167	1392	364	399	12	0	0
1	G	287	2167	1392	364	399	12	0	0

There are 14 discrepancies between the modelled and reference sequences:

Chain	Residue	Modelled	Actual	Comment	Reference
A	234	ALA	ILE	engineered mutation	UNP Q8VZL4
A	235	ILE	ALA	engineered mutation	UNP Q8VZL4
B	234	ALA	ILE	engineered mutation	UNP Q8VZL4
B	235	ILE	ALA	engineered mutation	UNP Q8VZL4
C	234	ALA	ILE	engineered mutation	UNP Q8VZL4
C	235	ILE	ALA	engineered mutation	UNP Q8VZL4
D	234	ALA	ILE	engineered mutation	UNP Q8VZL4
D	235	ILE	ALA	engineered mutation	UNP Q8VZL4
E	234	ALA	ILE	engineered mutation	UNP Q8VZL4
E	235	ILE	ALA	engineered mutation	UNP Q8VZL4
F	234	ALA	ILE	engineered mutation	UNP Q8VZL4
F	235	ILE	ALA	engineered mutation	UNP Q8VZL4
G	234	ALA	ILE	engineered mutation	UNP Q8VZL4
G	235	ILE	ALA	engineered mutation	UNP Q8VZL4



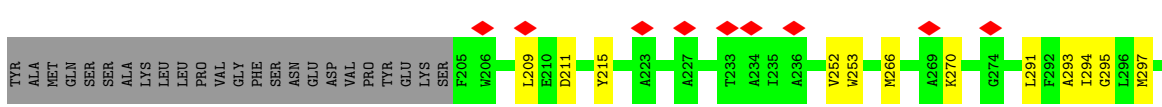
• Molecule 1: Mechanosensitive ion channel protein 1, mitochondrial



MET ALA ALA
GLY THR GLU VAL
ARG ARG ARG ARG
LEU LEU LEU LEU
SER SER SER SER
A325 R326
L329 L329
L333 L333
P343 P343
F344 F344
S345 S345
D348 D348
T349 T349
Q358 Q358
V359 V359
I360 I360
E361 E361
L364 L364
L370 L370
K374 K374
F375 F375
P376 P376
V377 V377
P380 P380
N381 N381
S382 S382
L383 L383
V390 V390
N391 N391
R398 R398
K403 K403
L406 L406
Q407 Q407
I408 I408
L411 L411
E420 E420
L425 L425
M428 M428
F432 F432

HIS ASN ASP ALA VAL
PRO PRO PRO PRO
PHE PHE PHE PHE
ASN ASN ASN ASN
TYR TYR TYR TYR
LEU LEU LEU LEU
SER SER SER SER
GLN ILE ILE ILE
ARG ARG ARG ARG
MET MET MET MET
I360 I360
V478 V478
E472 E472
M461 M461
L466 L466
T469 T469
E472 E472
G485 G485
V486 V486
L488 L488
G489 G489
T491 T491
TRP TRP
ASP ASP
ASN ASN
SER SER
THR THR
LEU LEU

ALA VAL THR VAL
GLU THR THR THR
ALA THR THR THR
LYS LYS LYS LYS
THR THR THR THR
ASP ASP ASP ASP
VAL VAL VAL VAL
SER SER SER SER
PHE PHE PHE PHE
SER SER SER SER
MET MET MET MET
I360 I360
V478 V478
E472 E472
M461 M461
L466 L466
T469 T469
E472 E472
G485 G485
V486 V486
L488 L488
G489 G489
T491 T491
TRP TRP
ASP ASP
ASN ASN
SER SER
THR THR
LEU LEU



E301 E301
V307 V307
V316 V316
V319 V319
A325 A325
R326 R326
L329 L329
L333 L333
P343 P343
F344 F344
S345 S345
D348 D348
T349 T349
Q358 Q358
V359 V359
I360 I360
E361 E361
L364 L364
L370 L370
K374 K374
F375 F375
P376 P376
V377 V377
V379 V379
P380 P380
N381 N381
S382 S382
L383 L383
V390 V390
N391 N391
R398 R398
K403 K403
L406 L406
Q407 Q407
I408 I408
L411 L411
L425 L425
M428 M428
R444 R444

V445 V445
E446 E446
L452 L452
T453 T453
I454 I454
G455 G455
M457 M457
L458 L458
M461 M461
L466 L466
T469 T469
E472 E472
V478 V478
G485 G485
V486 V486
L488 L488
G489 G489
T491 T491
TRP TRP
ASP ASP
ASN ASN
SER SER
THR THR
LEU LEU

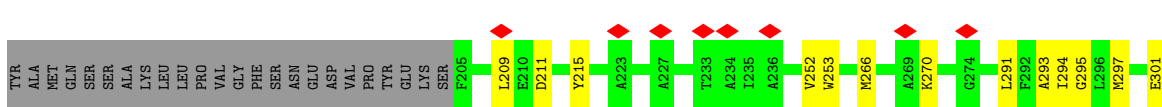
• Molecule 1: Mechanosensitive ion channel protein 1, mitochondrial



MET ALA ALA
GLY THR GLU VAL
ARG ARG ARG ARG
LEU LEU LEU LEU
SER SER SER SER
A325 R326
L329 L329
L333 L333
P343 P343
F344 F344
S345 S345
D348 D348
T349 T349
Q358 Q358
V359 V359
I360 I360
E361 E361
L364 L364
L370 L370
K374 K374
F375 F375
P376 P376
V377 V377
V379 V379
P380 P380
N381 N381
S382 S382
L383 L383
V390 V390
N391 N391
R398 R398
K403 K403
L406 L406
Q407 Q407
I408 I408
L425 L425
M428 M428
R444 R444
L452 L452
T453 T453

HIS ASN ASP ALA VAL
PRO PRO PRO PRO
PHE PHE PHE PHE
ASN ASN ASN ASN
TYR TYR TYR TYR
LEU LEU LEU LEU
SER SER SER SER
GLN ILE ILE ILE
ARG ARG ARG ARG
MET MET MET MET
I360 I360
V478 V478
E472 E472
M461 M461
L466 L466
T469 T469
E472 E472
G485 G485
V486 V486
L488 L488
G489 G489
T491 T491
TRP TRP
ASP ASP
ASN ASN
SER SER
THR THR
LEU LEU

ALA VAL THR VAL
GLU THR THR THR
ALA THR THR THR
LYS LYS LYS LYS
THR THR THR THR
ASP ASP ASP ASP
VAL VAL VAL VAL
SER SER SER SER
PHE PHE PHE PHE
SER SER SER SER
MET MET MET MET
I360 I360
V478 V478
E472 E472
M461 M461
L466 L466
T469 T469
E472 E472
G485 G485
V486 V486
L488 L488
G489 G489
T491 T491
TRP TRP
ASP ASP
ASN ASN
SER SER
THR THR
LEU LEU



V307 V307
V316 V316
V319 V319
A325 A325
R326 R326
L329 L329
L333 L333
P343 P343
F344 F344
S345 S345
D348 D348
T349 T349
Q358 Q358
V359 V359
I360 I360
E361 E361
L364 L364
L370 L370
K374 K374
F375 F375
P376 P376
V377 V377
V379 V379
P380 P380
N381 N381
S382 S382
L383 L383
V388 V388
I389 I389
V390 V390
N391 N391
R398 R398
K403 K403
L406 L406
Q407 Q407
I408 I408
L425 L425
M428 M428
R444 R444
L452 L452
T453 T453

I454 I454
G455 G455
M457 M457
L458 L458
M461 M461
L466 L466
T469 T469
E472 E472
V478 V478
G485 G485
V486 V486
L488 L488
G489 G489
T491 T491
TRP TRP
ASP ASP
ASN ASN
SER SER
THR THR
LEU LEU

HIS ASN
VAL THR ASP ALA
LYS PRO PHE
ASN TYR
GLY ASP
HIS SER
SER SER
TYR MET ALA
ARG PRO ALA
PHE HIS
SER VAL
SER SER
GLN LYS
PHE SER
LEU ASP
ASP ASP
PHE PHE
GLY

ALA VAL
THR THR
GLU THR
LYS LYS
LYS THR
ASP LYS
VAL VAL
SER SER
ASP ASP
GLU MET
SER MET
ILE ARG
PRO HIS
VAL VAL
SER SER
GLN LYS
PHE PHE
LEU ASP
ASP ASP
SER SER
ASN ASN
PRO PRO
TYR TYR
LEU LEU
LYS LYS
SER SER
ASP ASP
PHE PHE
GLY GLY
THR THR
LEU LEU
PHE PHE
ALA TRP
TRP VAL
VAL VAL
MET MET
PRO PRO
LYS LYS
ARG ARG
ILE ILE
VAL VAL
LEU LEU
GLN GLN
THR THR
PHE PHE
HIS HIS
VAL VAL
ASP ASP

TYR
ALA
MET
GLN
SER
SER
ALA
LYS
LEU
PRO
PRO
VAL
GLY
PHE
SER
ASN
ASN
ASP
ASP
PRO
VAL
TYR
GLU
LYS
SER
E205
L209
E210
D211
Y215
Y215
A223
A227
T233
A234
I235
A236
V252
W253
M266
A269
K270
L291
F292
A293
I294
G295
L296
M297
E301
V307

V316
V319
A325
R326
L329
L333
P343
F344
S345
D348
T349
Q358
V359
I360
E361
L364
L370
K374
F375
P376
V377
L378
V379
P380
N381
S382
L383
N391
R398
K403
L406
Q407
I408
L411
I414
I417
E420
L425
M428

R444
V445
E446
L452
T453
I454
G455
C456
M457
L458
M461
L466
Y467
M468
T469
Q470
Q471
E472
V478
H484
G485
V486
S487
L488
G489
T490
T491
TRP
ASP
ASN
SER
THR
LEU

4 Experimental information

Property	Value	Source
EM reconstruction method	SINGLE PARTICLE	Depositor
Imposed symmetry	POINT, C7	Depositor
Number of particles used	251528	Depositor
Resolution determination method	FSC 0.143 CUT-OFF	Depositor
CTF correction method	PHASE FLIPPING AND AMPLITUDE CORRECTION	Depositor
Microscope	FEI TITAN KRIOS	Depositor
Voltage (kV)	300	Depositor
Electron dose ($e^-/\text{\AA}^2$)	60	Depositor
Minimum defocus (nm)	Not provided	
Maximum defocus (nm)	Not provided	
Magnification	Not provided	
Image detector	GATAN K2 SUMMIT (4k x 4k)	Depositor
Maximum map value	0.454	Depositor
Minimum map value	-0.302	Depositor
Average map value	0.000	Depositor
Map value standard deviation	0.011	Depositor
Recommended contour level	0.019	Depositor
Map size (\AA)	249.59999, 249.59999, 249.59999	wwPDB
Map dimensions	240, 240, 240	wwPDB
Map angles ($^\circ$)	90.0, 90.0, 90.0	wwPDB
Pixel spacing (\AA)	1.04, 1.04, 1.04	Depositor

5 Model quality i

5.1 Standard geometry i

The Z score for a bond length (or angle) is the number of standard deviations the observed value is removed from the expected value. A bond length (or angle) with $|Z| > 5$ is considered an outlier worth inspection. RMSZ is the root-mean-square of all Z scores of the bond lengths (or angles).

Mol	Chain	Bond lengths		Bond angles	
		RMSZ	# Z >5	RMSZ	# Z >5
1	A	0.48	1/2201 (0.0%)	0.73	1/2979 (0.0%)
1	B	0.48	1/2201 (0.0%)	0.73	1/2979 (0.0%)
1	C	0.48	1/2201 (0.0%)	0.73	1/2979 (0.0%)
1	D	0.48	1/2201 (0.0%)	0.73	1/2979 (0.0%)
1	E	0.48	1/2201 (0.0%)	0.73	1/2979 (0.0%)
1	F	0.48	1/2201 (0.0%)	0.73	1/2979 (0.0%)
1	G	0.48	1/2201 (0.0%)	0.73	1/2979 (0.0%)
All	All	0.48	7/15407 (0.0%)	0.73	7/20853 (0.0%)

Chiral center outliers are detected by calculating the chiral volume of a chiral center and verifying if the center is modelled as a planar moiety or with the opposite hand. A planarity outlier is detected by checking planarity of atoms in a peptide group, atoms in a mainchain group or atoms of a sidechain that are expected to be planar.

Mol	Chain	#Chirality outliers	#Planarity outliers
1	A	0	1
1	B	0	1
1	C	0	1
1	D	0	1
1	E	0	1
1	F	0	1
1	G	0	1
All	All	0	7

All (7) bond length outliers are listed below:

Mol	Chain	Res	Type	Atoms	Z	Observed(Å)	Ideal(Å)
1	B	375	PHE	C-N	-7.02	1.21	1.34
1	A	375	PHE	C-N	-6.98	1.21	1.34
1	E	375	PHE	C-N	-6.97	1.21	1.34
1	C	375	PHE	C-N	-6.97	1.21	1.34
1	F	375	PHE	C-N	-6.97	1.21	1.34
1	G	375	PHE	C-N	-6.95	1.21	1.34

Continued on next page...

Continued from previous page...

Mol	Chain	Res	Type	Atoms	Z	Observed(Å)	Ideal(Å)
1	D	375	PHE	C-N	-6.95	1.21	1.34

All (7) bond angle outliers are listed below:

Mol	Chain	Res	Type	Atoms	Z	Observed(°)	Ideal(°)
1	C	374	LYS	C-N-CA	5.43	135.28	121.70
1	D	374	LYS	C-N-CA	5.42	135.26	121.70
1	F	374	LYS	C-N-CA	5.42	135.25	121.70
1	E	374	LYS	C-N-CA	5.41	135.23	121.70
1	G	374	LYS	C-N-CA	5.40	135.21	121.70
1	A	374	LYS	C-N-CA	5.40	135.20	121.70
1	B	374	LYS	C-N-CA	5.40	135.19	121.70

There are no chirality outliers.

All (7) planarity outliers are listed below:

Mol	Chain	Res	Type	Group
1	A	253	TRP	Peptide
1	B	253	TRP	Peptide
1	C	253	TRP	Peptide
1	D	253	TRP	Peptide
1	E	253	TRP	Peptide
1	F	253	TRP	Peptide
1	G	253	TRP	Peptide

5.2 Too-close contacts [\(i\)](#)

In the following table, the Non-H and H(model) columns list the number of non-hydrogen atoms and hydrogen atoms in the chain respectively. The H(added) column lists the number of hydrogen atoms added and optimized by MolProbity. The Clashes column lists the number of clashes within the asymmetric unit, whereas Symm-Clashes lists symmetry-related clashes.

Mol	Chain	Non-H	H(model)	H(added)	Clashes	Symm-Clashes
1	A	2167	0	2251	38	0
1	B	2167	0	2251	41	0
1	C	2167	0	2251	41	0
1	D	2167	0	2251	38	0
1	E	2167	0	2251	41	0
1	F	2167	0	2251	50	0
1	G	2167	0	2251	44	0
All	All	15169	0	15757	255	0

The all-atom clashscore is defined as the number of clashes found per 1000 atoms (including hydrogen atoms). The all-atom clashscore for this structure is 8.

All (255) close contacts within the same asymmetric unit are listed below, sorted by their clash magnitude.

Atom-1	Atom-2	Interatomic distance (Å)	Clash overlap (Å)
1:F:211:ASP:O	1:F:215:TYR:HB2	1.77	0.84
1:C:211:ASP:O	1:C:215:TYR:HB2	1.77	0.84
1:A:211:ASP:O	1:A:215:TYR:HB2	1.77	0.83
1:G:211:ASP:O	1:G:215:TYR:HB2	1.77	0.83
1:D:211:ASP:O	1:D:215:TYR:HB2	1.77	0.83
1:E:211:ASP:O	1:E:215:TYR:HB2	1.77	0.83
1:B:211:ASP:O	1:B:215:TYR:HB2	1.77	0.83
1:E:333:LEU:HD13	1:F:325:ALA:HB2	1.72	0.70
1:A:293:ALA:O	1:A:297:MET:HB2	1.96	0.65
1:C:293:ALA:O	1:C:297:MET:HB2	1.96	0.65
1:F:293:ALA:O	1:F:297:MET:HB2	1.96	0.65
1:B:293:ALA:O	1:B:297:MET:HB2	1.96	0.65
1:G:293:ALA:O	1:G:297:MET:HB2	1.96	0.65
1:E:293:ALA:O	1:E:297:MET:HB2	1.96	0.65
1:D:293:ALA:O	1:D:297:MET:HB2	1.96	0.64
1:A:491:THR:OG1	1:G:446:GLU:OE2	2.15	0.63
1:E:343:PRO:HB3	1:F:378:LEU:HD22	1.82	0.61
1:C:403:LYS:HG2	1:C:453:THR:HG22	1.84	0.60
1:F:403:LYS:HG2	1:F:453:THR:HG22	1.84	0.60
1:G:403:LYS:HG2	1:G:453:THR:HG22	1.84	0.60
1:B:403:LYS:HG2	1:B:453:THR:HG22	1.84	0.60
1:D:403:LYS:HG2	1:D:453:THR:HG22	1.84	0.60
1:E:403:LYS:HG2	1:E:453:THR:HG22	1.84	0.60
1:A:403:LYS:HG2	1:A:453:THR:HG22	1.84	0.59
1:E:390:VAL:HG22	1:F:377:VAL:HG22	1.84	0.59
1:F:370:LEU:HD21	1:F:374:LYS:HG3	1.85	0.58
1:E:370:LEU:HD21	1:E:374:LYS:HG3	1.85	0.58
1:C:370:LEU:HD21	1:C:374:LYS:HG3	1.85	0.58
1:B:370:LEU:HD21	1:B:374:LYS:HG3	1.85	0.58
1:G:370:LEU:HD21	1:G:374:LYS:HG3	1.85	0.58
1:D:370:LEU:HD21	1:D:374:LYS:HG3	1.85	0.58
1:A:398:ARG:NH1	1:A:466:LEU:HD11	2.20	0.57
1:G:398:ARG:NH1	1:G:466:LEU:HD11	2.20	0.57
1:A:370:LEU:HD21	1:A:374:LYS:HG3	1.85	0.57
1:B:398:ARG:NH1	1:B:466:LEU:HD11	2.20	0.57
1:C:398:ARG:NH1	1:C:466:LEU:HD11	2.20	0.56
1:F:398:ARG:NH1	1:F:466:LEU:HD11	2.20	0.56

Continued on next page...

Continued from previous page...

Atom-1	Atom-2	Interatomic distance (Å)	Clash overlap (Å)
1:B:446:GLU:OE2	1:C:491:THR:OG1	2.23	0.56
1:D:398:ARG:NH1	1:D:466:LEU:HD11	2.20	0.56
1:E:398:ARG:NH1	1:E:466:LEU:HD11	2.20	0.56
1:F:407:GLN:HG3	1:F:489:GLY:HA2	1.88	0.56
1:E:407:GLN:HG3	1:E:489:GLY:HA2	1.88	0.56
1:G:407:GLN:HG3	1:G:489:GLY:HA2	1.88	0.55
1:D:407:GLN:HG3	1:D:489:GLY:HA2	1.88	0.55
1:F:343:PRO:O	1:F:391:ASN:ND2	2.41	0.54
1:G:343:PRO:O	1:G:391:ASN:ND2	2.40	0.54
1:E:301:GLU:OE2	1:F:308:GLN:NE2	2.41	0.54
1:A:343:PRO:O	1:A:391:ASN:ND2	2.41	0.54
1:C:343:PRO:O	1:C:391:ASN:ND2	2.41	0.54
1:F:446:GLU:OE2	1:G:491:THR:OG1	2.25	0.54
1:E:343:PRO:O	1:E:391:ASN:ND2	2.41	0.54
1:F:411:LEU:HG	1:G:478:VAL:HG11	1.89	0.54
1:C:446:GLU:OE2	1:D:491:THR:OG1	2.21	0.54
1:B:407:GLN:HG3	1:B:489:GLY:HA2	1.88	0.54
1:A:407:GLN:HG3	1:A:489:GLY:HA2	1.88	0.54
1:D:343:PRO:O	1:D:391:ASN:ND2	2.41	0.54
1:C:407:GLN:HG3	1:C:489:GLY:HA2	1.88	0.53
1:B:343:PRO:O	1:B:391:ASN:ND2	2.40	0.53
1:E:411:LEU:HG	1:F:478:VAL:HG11	1.89	0.53
1:F:406:LEU:HD21	1:F:452:LEU:HD13	1.91	0.53
1:E:406:LEU:HD21	1:E:452:LEU:HD13	1.91	0.53
1:E:442:LEU:HG	1:F:471:GLN:HG3	1.89	0.53
1:E:446:GLU:OE2	1:F:491:THR:OG1	2.25	0.53
1:D:406:LEU:HD21	1:D:452:LEU:HD13	1.91	0.53
1:C:406:LEU:HD21	1:C:452:LEU:HD13	1.91	0.53
1:F:345:SER:N	1:F:348:ASP:OD2	2.42	0.53
1:G:398:ARG:O	1:G:458:LEU:N	2.41	0.53
1:G:406:LEU:HD21	1:G:452:LEU:HD13	1.91	0.53
1:B:406:LEU:HD21	1:B:452:LEU:HD13	1.91	0.53
1:G:345:SER:N	1:G:348:ASP:OD2	2.42	0.53
1:D:345:SER:N	1:D:348:ASP:OD2	2.42	0.52
1:A:406:LEU:HD21	1:A:452:LEU:HD13	1.91	0.52
1:F:293:ALA:O	1:F:297:MET:CB	2.58	0.52
1:B:360:ILE:HG22	1:B:361:GLU:HG3	1.92	0.52
1:D:360:ILE:HG22	1:D:361:GLU:HG3	1.92	0.52
1:E:293:ALA:O	1:E:297:MET:CB	2.58	0.52
1:E:345:SER:N	1:E:348:ASP:OD2	2.42	0.52
1:G:293:ALA:O	1:G:297:MET:CB	2.58	0.52

Continued on next page...

Continued from previous page...

Atom-1	Atom-2	Interatomic distance (Å)	Clash overlap (Å)
1:C:333:LEU:HD13	1:D:325:ALA:HB2	1.92	0.52
1:D:398:ARG:O	1:D:458:LEU:N	2.41	0.52
1:B:293:ALA:O	1:B:297:MET:CB	2.58	0.52
1:E:360:ILE:HG22	1:E:361:GLU:HG3	1.92	0.52
1:A:293:ALA:O	1:A:297:MET:CB	2.58	0.51
1:C:398:ARG:O	1:C:458:LEU:N	2.41	0.51
1:C:293:ALA:O	1:C:297:MET:CB	2.58	0.51
1:B:345:SER:N	1:B:348:ASP:OD2	2.42	0.51
1:C:360:ILE:HG22	1:C:361:GLU:HG3	1.92	0.51
1:B:349:THR:HA	1:B:358:GLN:HA	1.92	0.51
1:D:293:ALA:O	1:D:297:MET:CB	2.58	0.51
1:A:349:THR:HA	1:A:358:GLN:HA	1.92	0.51
1:C:345:SER:N	1:C:348:ASP:OD2	2.42	0.51
1:A:345:SER:N	1:A:348:ASP:OD2	2.42	0.51
1:B:398:ARG:O	1:B:458:LEU:N	2.41	0.51
1:A:360:ILE:HG22	1:A:361:GLU:HG3	1.92	0.51
1:C:349:THR:HA	1:C:358:GLN:HA	1.92	0.51
1:F:360:ILE:HG22	1:F:361:GLU:HG3	1.92	0.51
1:F:390:VAL:HG22	1:G:377:VAL:HG22	1.93	0.51
1:E:349:THR:HA	1:E:358:GLN:HA	1.93	0.50
1:G:458:LEU:HD13	1:G:461:MET:HE3	1.93	0.50
1:A:325:ALA:HB2	1:G:333:LEU:HD13	1.93	0.50
1:A:478:VAL:HG11	1:G:411:LEU:HG	1.92	0.50
1:D:349:THR:HA	1:D:358:GLN:HA	1.92	0.50
1:F:458:LEU:HD13	1:F:461:MET:HE3	1.93	0.50
1:A:458:LEU:HD13	1:A:461:MET:HE3	1.93	0.50
1:F:349:THR:HA	1:F:358:GLN:HA	1.93	0.50
1:G:349:THR:HA	1:G:358:GLN:HA	1.92	0.50
1:E:398:ARG:O	1:E:458:LEU:N	2.41	0.50
1:F:398:ARG:O	1:F:458:LEU:N	2.41	0.50
1:G:360:ILE:HG22	1:G:361:GLU:HG3	1.92	0.50
1:B:458:LEU:HD13	1:B:461:MET:HE3	1.93	0.49
1:A:398:ARG:O	1:A:458:LEU:N	2.41	0.49
1:A:446:GLU:OE2	1:B:491:THR:OG1	2.27	0.49
1:E:388:VAL:HG22	1:F:379:VAL:HG22	1.94	0.49
1:G:301:GLU:HG2	1:G:307:VAL:HG13	1.95	0.49
1:A:378:LEU:HD22	1:G:343:PRO:HB3	1.93	0.49
1:D:458:LEU:HD13	1:D:461:MET:HE3	1.93	0.49
1:A:301:GLU:HG2	1:A:307:VAL:HG13	1.95	0.49
1:C:458:LEU:HD13	1:C:461:MET:HE3	1.93	0.49
1:E:458:LEU:HD13	1:E:461:MET:HE3	1.93	0.49

Continued on next page...

Continued from previous page...

Atom-1	Atom-2	Interatomic distance (Å)	Clash overlap (Å)
1:F:301:GLU:HG2	1:F:307:VAL:HG13	1.95	0.49
1:C:364:LEU:O	1:C:381:ASN:ND2	2.46	0.49
1:E:301:GLU:HG2	1:E:307:VAL:HG13	1.95	0.49
1:G:364:LEU:O	1:G:381:ASN:ND2	2.46	0.49
1:A:364:LEU:O	1:A:381:ASN:ND2	2.46	0.48
1:C:469:THR:HA	1:C:472:GLU:HG2	1.95	0.48
1:B:301:GLU:HG2	1:B:307:VAL:HG13	1.95	0.48
1:C:301:GLU:HG2	1:C:307:VAL:HG13	1.95	0.48
1:D:469:THR:HA	1:D:472:GLU:HG2	1.95	0.48
1:F:442:LEU:HG	1:G:471:GLN:HG3	1.95	0.48
1:F:469:THR:HA	1:F:472:GLU:HG2	1.95	0.48
1:D:301:GLU:HG2	1:D:307:VAL:HG13	1.95	0.48
1:B:469:THR:HA	1:B:472:GLU:HG2	1.95	0.48
1:D:406:LEU:HA	1:D:488:LEU:HA	1.96	0.48
1:E:469:THR:HA	1:E:472:GLU:HG2	1.95	0.48
1:F:406:LEU:HA	1:F:488:LEU:HA	1.96	0.48
1:E:406:LEU:HA	1:E:488:LEU:HA	1.96	0.48
1:G:469:THR:HA	1:G:472:GLU:HG2	1.95	0.48
1:D:388:VAL:HG13	1:E:377:VAL:HG13	1.96	0.48
1:F:364:LEU:O	1:F:381:ASN:ND2	2.46	0.48
1:C:406:LEU:HA	1:C:488:LEU:HA	1.96	0.48
1:D:390:VAL:HG22	1:E:377:VAL:HG22	1.95	0.48
1:B:364:LEU:O	1:B:381:ASN:ND2	2.46	0.47
1:G:406:LEU:HA	1:G:488:LEU:HA	1.96	0.47
1:E:364:LEU:O	1:E:381:ASN:ND2	2.46	0.47
1:A:469:THR:HA	1:A:472:GLU:HG2	1.95	0.47
1:B:406:LEU:HA	1:B:488:LEU:HA	1.96	0.47
1:A:406:LEU:HA	1:A:488:LEU:HA	1.96	0.47
1:C:411:LEU:HG	1:D:478:VAL:HG11	1.97	0.47
1:B:333:LEU:HD13	1:C:325:ALA:HB2	1.97	0.47
1:D:364:LEU:O	1:D:381:ASN:ND2	2.46	0.47
1:E:388:VAL:HG13	1:F:377:VAL:HG13	1.97	0.47
1:C:343:PRO:HB3	1:D:378:LEU:HD22	1.97	0.46
1:B:425:LEU:HD11	1:B:454:ILE:HG23	1.98	0.46
1:A:425:LEU:HD11	1:A:454:ILE:HG23	1.98	0.46
1:C:390:VAL:HG22	1:D:377:VAL:HG22	1.98	0.46
1:D:425:LEU:HD11	1:D:454:ILE:HG23	1.98	0.46
1:D:209:LEU:HD23	1:D:209:LEU:HA	1.76	0.46
1:E:425:LEU:HD11	1:E:454:ILE:HG23	1.98	0.46
1:C:425:LEU:HD11	1:C:454:ILE:HG23	1.98	0.45
1:F:425:LEU:HD11	1:F:454:ILE:HG23	1.98	0.45

Continued on next page...

Continued from previous page...

Atom-1	Atom-2	Interatomic distance (Å)	Clash overlap (Å)
1:F:441:TYR:HB3	1:G:467:TYR:HB3	1.98	0.45
1:B:360:ILE:HD11	1:B:370:LEU:HB2	1.98	0.45
1:G:425:LEU:HD11	1:G:454:ILE:HG23	1.98	0.45
1:A:360:ILE:HD11	1:A:370:LEU:HB2	1.98	0.45
1:C:360:ILE:HD11	1:C:370:LEU:HB2	1.98	0.45
1:A:333:LEU:HD13	1:B:325:ALA:HB2	1.99	0.45
1:C:252:VAL:HG21	1:C:295:GLY:HA2	1.99	0.45
1:D:252:VAL:HG21	1:D:295:GLY:HA2	1.99	0.45
1:A:456:CYS:SG	1:A:457:ASN:N	2.91	0.44
1:F:343:PRO:HB3	1:G:378:LEU:HD22	1.99	0.44
1:G:291:LEU:HA	1:G:294:ILE:HG22	1.99	0.44
1:G:360:ILE:HD11	1:G:370:LEU:HB2	1.98	0.44
1:G:456:CYS:SG	1:G:457:ASN:N	2.91	0.44
1:A:291:LEU:HA	1:A:294:ILE:HG22	1.99	0.44
1:E:252:VAL:HG21	1:E:295:GLY:HA2	1.99	0.44
1:E:456:CYS:SG	1:E:457:ASN:N	2.91	0.44
1:A:408:ILE:HG22	1:A:486:VAL:HG11	2.00	0.44
1:B:456:CYS:SG	1:B:457:ASN:N	2.91	0.44
1:C:291:LEU:HA	1:C:294:ILE:HG22	1.99	0.44
1:C:456:CYS:SG	1:C:457:ASN:N	2.91	0.44
1:F:291:LEU:HA	1:F:294:ILE:HG22	1.99	0.44
1:F:360:ILE:HD11	1:F:370:LEU:HB2	1.98	0.44
1:E:360:ILE:HD11	1:E:370:LEU:HB2	1.98	0.44
1:B:408:ILE:HG22	1:B:486:VAL:HG11	2.00	0.44
1:B:411:LEU:HG	1:C:478:VAL:HG11	2.00	0.44
1:D:360:ILE:HD11	1:D:370:LEU:HB2	1.98	0.44
1:D:456:CYS:SG	1:D:457:ASN:N	2.91	0.44
1:F:408:ILE:HG22	1:F:486:VAL:HG11	2.00	0.44
1:F:456:CYS:SG	1:F:457:ASN:N	2.91	0.44
1:B:252:VAL:HG21	1:B:295:GLY:HA2	1.99	0.43
1:B:291:LEU:HA	1:B:294:ILE:HG22	1.99	0.43
1:D:291:LEU:HA	1:D:294:ILE:HG22	1.99	0.43
1:E:291:LEU:HA	1:E:294:ILE:HG22	1.99	0.43
1:E:408:ILE:HG22	1:E:486:VAL:HG11	2.00	0.43
1:G:408:ILE:HG22	1:G:486:VAL:HG11	2.00	0.43
1:B:390:VAL:HG22	1:C:377:VAL:HG22	2.00	0.43
1:C:316:VAL:HA	1:C:319:VAL:HG12	2.00	0.43
1:G:316:VAL:HA	1:G:319:VAL:HG12	2.00	0.43
1:G:349:THR:HG22	1:G:358:GLN:HB3	2.00	0.43
1:A:349:THR:HG22	1:A:358:GLN:HB3	2.00	0.43
1:B:316:VAL:HA	1:B:319:VAL:HG12	2.00	0.43

Continued on next page...

Continued from previous page...

Atom-1	Atom-2	Interatomic distance (Å)	Clash overlap (Å)
1:C:408:ILE:HG22	1:C:486:VAL:HG11	2.00	0.43
1:D:408:ILE:HG22	1:D:486:VAL:HG11	2.00	0.43
1:A:390:VAL:HG22	1:B:377:VAL:HG22	2.00	0.43
1:F:420:GLU:OE1	1:F:484:HIS:NE2	2.43	0.43
1:D:316:VAL:HA	1:D:319:VAL:HG12	2.00	0.43
1:F:333:LEU:HD13	1:G:325:ALA:HB2	2.00	0.43
1:F:349:THR:HG22	1:F:358:GLN:HB3	2.00	0.43
1:A:316:VAL:HA	1:A:319:VAL:HG12	2.00	0.43
1:B:349:THR:HG22	1:B:358:GLN:HB3	2.00	0.43
1:F:252:VAL:HG21	1:F:295:GLY:HA2	1.99	0.43
1:A:252:VAL:HG21	1:A:295:GLY:HA2	1.99	0.43
1:G:252:VAL:HG21	1:G:295:GLY:HA2	1.99	0.43
1:C:349:THR:HG22	1:C:358:GLN:HB3	2.00	0.43
1:D:349:THR:HG22	1:D:358:GLN:HB3	2.00	0.43
1:E:349:THR:HG22	1:E:358:GLN:HB3	2.00	0.43
1:A:420:GLU:OE1	1:A:484:HIS:NE2	2.43	0.42
1:F:316:VAL:HA	1:F:319:VAL:HG12	2.00	0.42
1:E:316:VAL:HA	1:E:319:VAL:HG12	2.00	0.42
1:G:358:GLN:HE21	1:G:370:LEU:HD22	1.85	0.42
1:E:358:GLN:HE21	1:E:370:LEU:HD22	1.85	0.42
1:F:358:GLN:HE21	1:F:370:LEU:HD22	1.85	0.42
1:A:358:GLN:HE21	1:A:370:LEU:HD22	1.85	0.42
1:D:358:GLN:HE21	1:D:370:LEU:HD22	1.85	0.41
1:C:266:MET:HG3	1:C:270:LYS:NZ	2.35	0.41
1:B:266:MET:HG3	1:B:270:LYS:NZ	2.35	0.41
1:D:266:MET:HG3	1:D:270:LYS:NZ	2.35	0.41
1:B:358:GLN:HE21	1:B:370:LEU:HD22	1.85	0.41
1:G:266:MET:HG3	1:G:270:LYS:NZ	2.35	0.41
1:G:420:GLU:OE1	1:G:484:HIS:NE2	2.42	0.41
1:C:209:LEU:HD23	1:C:209:LEU:HA	1.76	0.41
1:C:358:GLN:HE21	1:C:370:LEU:HD22	1.85	0.41
1:A:266:MET:HG3	1:A:270:LYS:NZ	2.35	0.41
1:A:411:LEU:HG	1:B:478:VAL:HG11	2.03	0.41
1:B:343:PRO:HB3	1:C:378:LEU:HD22	2.01	0.41
1:E:380:PRO:HG2	1:E:383:LEU:HG	2.03	0.41
1:F:209:LEU:HA	1:F:209:LEU:HD23	1.76	0.41
1:F:266:MET:HG3	1:F:270:LYS:NZ	2.35	0.41
1:F:441:TYR:CB	1:G:467:TYR:HB3	2.51	0.41
1:A:432:PHE:HE2	1:A:435:LYS:HG2	1.86	0.41
1:B:209:LEU:HA	1:B:209:LEU:HD23	1.76	0.41
1:B:420:GLU:OE1	1:B:484:HIS:NE2	2.43	0.40

Continued on next page...

Continued from previous page...

Atom-1	Atom-2	Interatomic distance (Å)	Clash overlap (Å)
1:D:380:PRO:HG2	1:D:383:LEU:HG	2.04	0.40
1:F:380:PRO:HG2	1:F:383:LEU:HG	2.03	0.40
1:F:432:PHE:HE2	1:F:435:LYS:HG2	1.86	0.40
1:C:379:VAL:HG13	1:C:383:LEU:HD12	2.03	0.40
1:C:380:PRO:HG2	1:C:383:LEU:HG	2.03	0.40
1:D:379:VAL:HG13	1:D:383:LEU:HD12	2.03	0.40
1:E:266:MET:HG3	1:E:270:LYS:NZ	2.35	0.40
1:E:379:VAL:HG13	1:E:383:LEU:HD12	2.03	0.40
1:G:380:PRO:HG2	1:G:383:LEU:HG	2.03	0.40
1:G:414:ILE:HD12	1:G:417:ILE:HB	2.04	0.40
1:B:380:PRO:HG2	1:B:383:LEU:HG	2.03	0.40
1:B:432:PHE:HE2	1:B:435:LYS:HG2	1.86	0.40
1:F:388:VAL:HG13	1:G:377:VAL:HG13	2.03	0.40

There are no symmetry-related clashes.

5.3 Torsion angles [i](#)

5.3.1 Protein backbone [i](#)

In the following table, the Percentiles column shows the percent Ramachandran outliers of the chain as a percentile score with respect to all PDB entries followed by that with respect to all EM entries.

The Analysed column shows the number of residues for which the backbone conformation was analysed, and the total number of residues.

Mol	Chain	Analysed	Favoured	Allowed	Outliers	Percentiles	
1	A	285/497 (57%)	257 (90%)	28 (10%)	0	100	100
1	B	285/497 (57%)	257 (90%)	28 (10%)	0	100	100
1	C	285/497 (57%)	258 (90%)	27 (10%)	0	100	100
1	D	285/497 (57%)	257 (90%)	28 (10%)	0	100	100
1	E	285/497 (57%)	257 (90%)	28 (10%)	0	100	100
1	F	285/497 (57%)	257 (90%)	28 (10%)	0	100	100
1	G	285/497 (57%)	257 (90%)	28 (10%)	0	100	100
All	All	1995/3479 (57%)	1800 (90%)	195 (10%)	0	100	100

There are no Ramachandran outliers to report.

5.3.2 Protein sidechains [i](#)

In the following table, the Percentiles column shows the percent sidechain outliers of the chain as a percentile score with respect to all PDB entries followed by that with respect to all EM entries.

The Analysed column shows the number of residues for which the sidechain conformation was analysed, and the total number of residues.

Mol	Chain	Analysed	Rotameric	Outliers	Percentiles
1	A	234/417 (56%)	229 (98%)	5 (2%)	53 75
1	B	234/417 (56%)	229 (98%)	5 (2%)	53 75
1	C	234/417 (56%)	229 (98%)	5 (2%)	53 75
1	D	234/417 (56%)	229 (98%)	5 (2%)	53 75
1	E	234/417 (56%)	229 (98%)	5 (2%)	53 75
1	F	234/417 (56%)	229 (98%)	5 (2%)	53 75
1	G	234/417 (56%)	229 (98%)	5 (2%)	53 75
All	All	1638/2919 (56%)	1603 (98%)	35 (2%)	56 75

All (35) residues with a non-rotameric sidechain are listed below:

Mol	Chain	Res	Type
1	A	326	ARG
1	A	329	LEU
1	A	428	ASN
1	A	444	ARG
1	A	457	ASN
1	B	326	ARG
1	B	329	LEU
1	B	428	ASN
1	B	444	ARG
1	B	457	ASN
1	C	326	ARG
1	C	329	LEU
1	C	428	ASN
1	C	444	ARG
1	C	457	ASN
1	D	326	ARG
1	D	329	LEU
1	D	428	ASN
1	D	444	ARG
1	D	457	ASN

Continued on next page...

Continued from previous page...

Mol	Chain	Res	Type
1	E	326	ARG
1	E	329	LEU
1	E	428	ASN
1	E	444	ARG
1	E	457	ASN
1	F	326	ARG
1	F	329	LEU
1	F	428	ASN
1	F	444	ARG
1	F	457	ASN
1	G	326	ARG
1	G	329	LEU
1	G	428	ASN
1	G	444	ARG
1	G	457	ASN

Sometimes sidechains can be flipped to improve hydrogen bonding and reduce clashes. All (13) such sidechains are listed below:

Mol	Chain	Res	Type
1	A	358	GLN
1	A	428	ASN
1	B	358	GLN
1	B	428	ASN
1	C	358	GLN
1	C	428	ASN
1	D	358	GLN
1	D	428	ASN
1	E	428	ASN
1	F	358	GLN
1	F	428	ASN
1	G	358	GLN
1	G	428	ASN

5.3.3 RNA [i](#)

There are no RNA molecules in this entry.

5.4 Non-standard residues in protein, DNA, RNA chains [i](#)

There are no non-standard protein/DNA/RNA residues in this entry.

5.5 Carbohydrates [i](#)

There are no monosaccharides in this entry.

5.6 Ligand geometry [i](#)

There are no ligands in this entry.

5.7 Other polymers [i](#)

There are no such residues in this entry.

5.8 Polymer linkage issues [i](#)

There are no chain breaks in this entry.

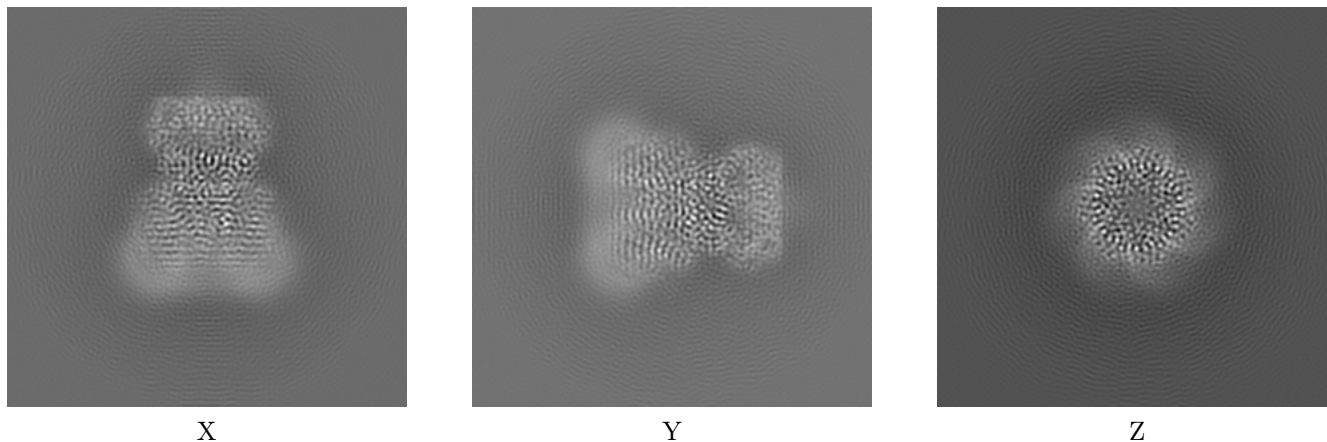
6 Map visualisation [i](#)

This section contains visualisations of the EMDB entry EMD-30017. These allow visual inspection of the internal detail of the map and identification of artifacts.

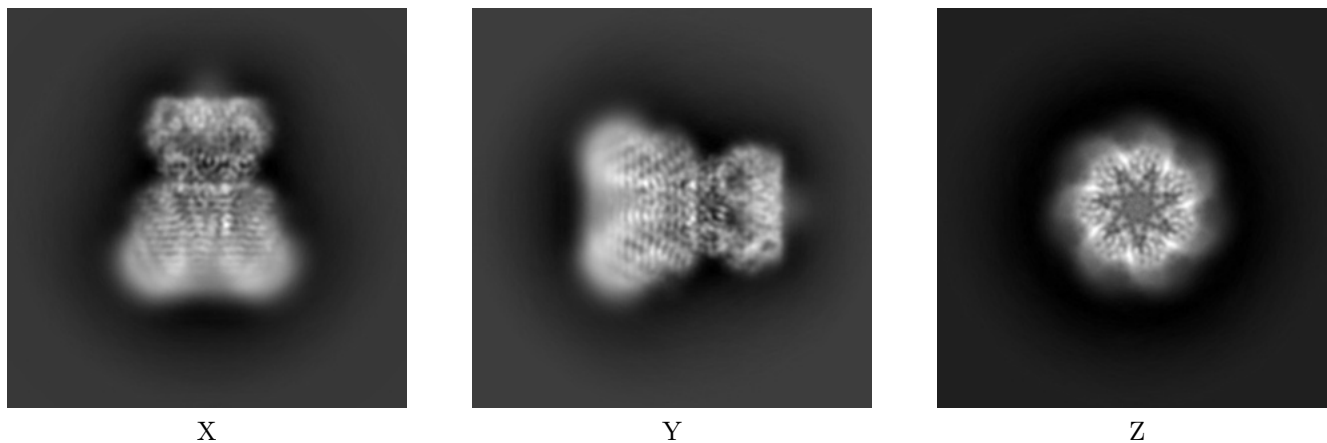
Images derived from a raw map, generated by summing the deposited half-maps, are presented below the corresponding image components of the primary map to allow further visual inspection and comparison with those of the primary map.

6.1 Orthogonal projections [i](#)

6.1.1 Primary map



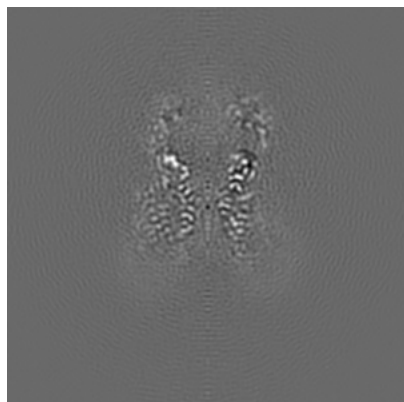
6.1.2 Raw map



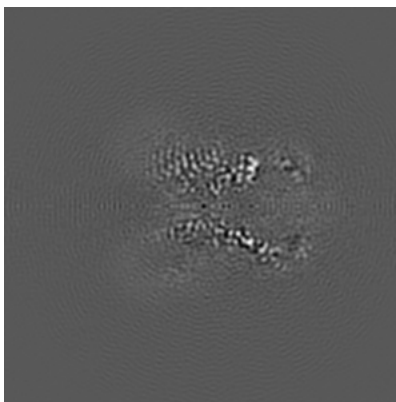
The images above show the map projected in three orthogonal directions.

6.2 Central slices [i](#)

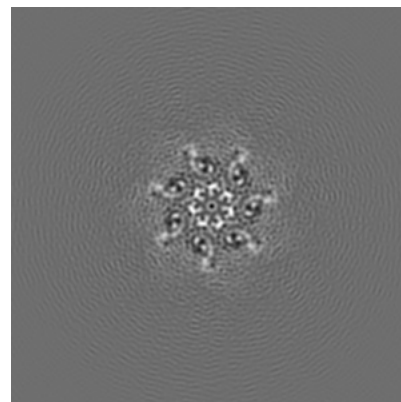
6.2.1 Primary map



X Index: 120

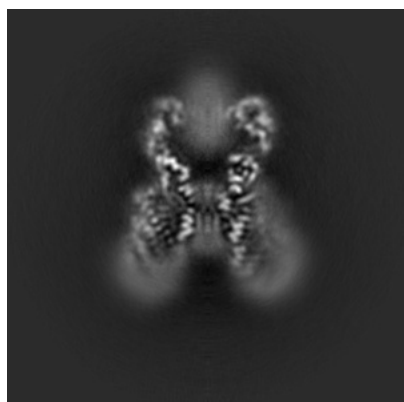


Y Index: 120

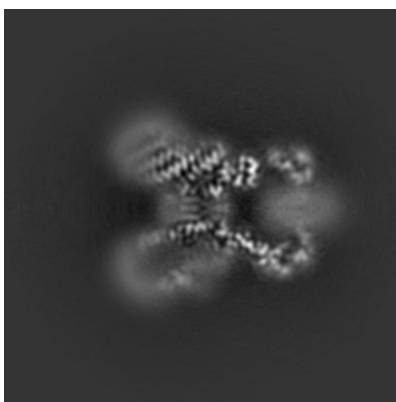


Z Index: 120

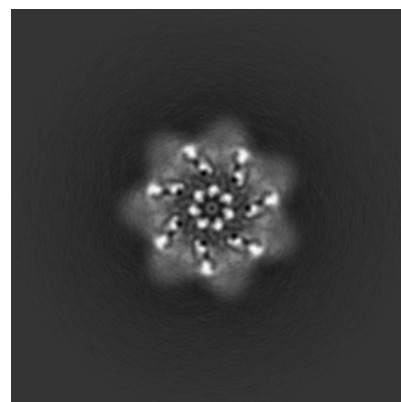
6.2.2 Raw map



X Index: 120



Y Index: 120

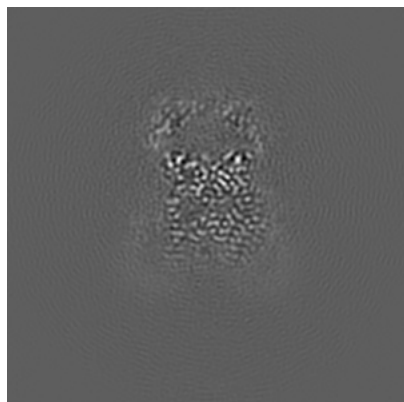


Z Index: 120

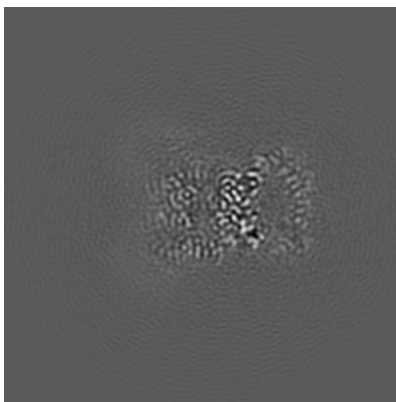
The images above show central slices of the map in three orthogonal directions.

6.3 Largest variance slices [i](#)

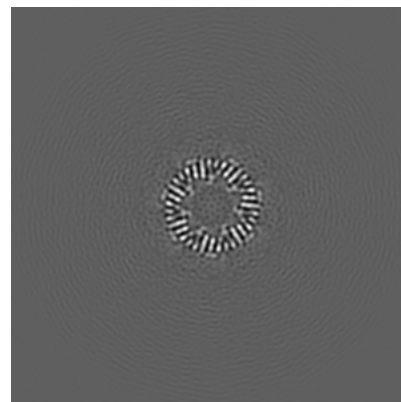
6.3.1 Primary map



X Index: 134

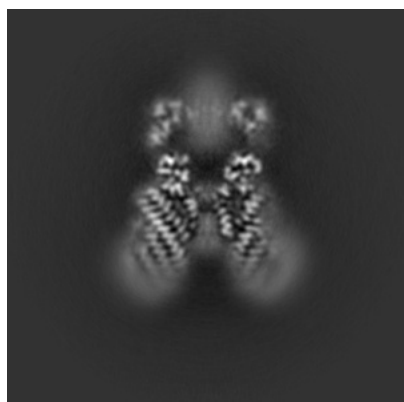


Y Index: 104

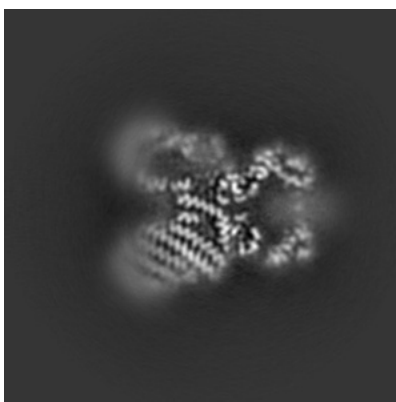


Z Index: 149

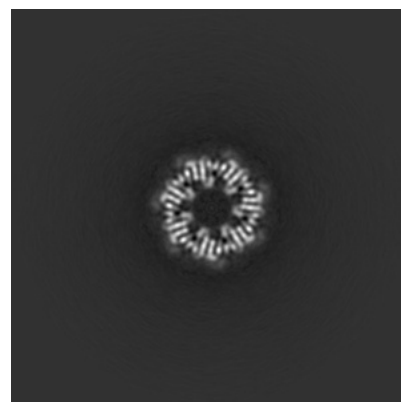
6.3.2 Raw map



X Index: 115



Y Index: 131

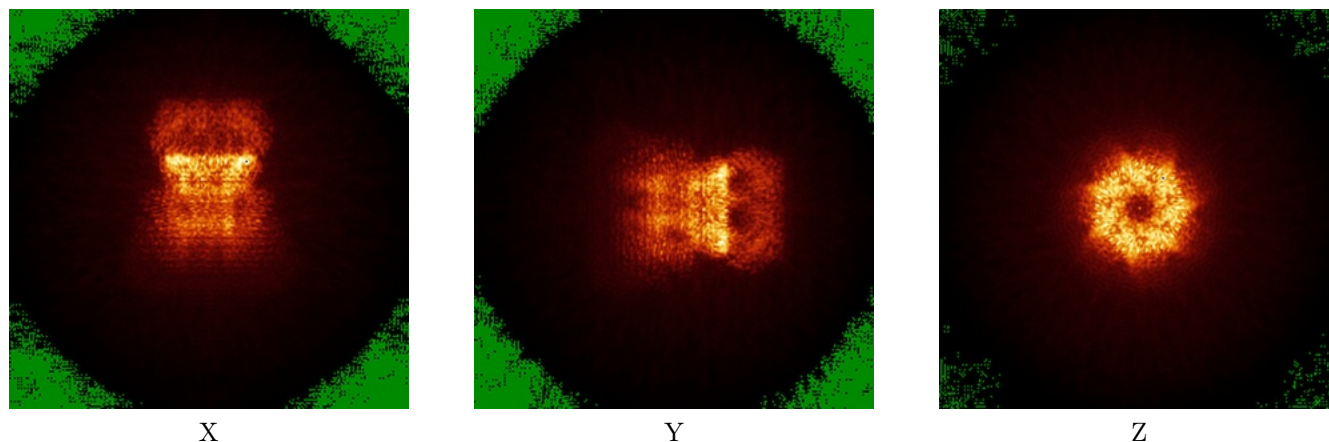


Z Index: 149

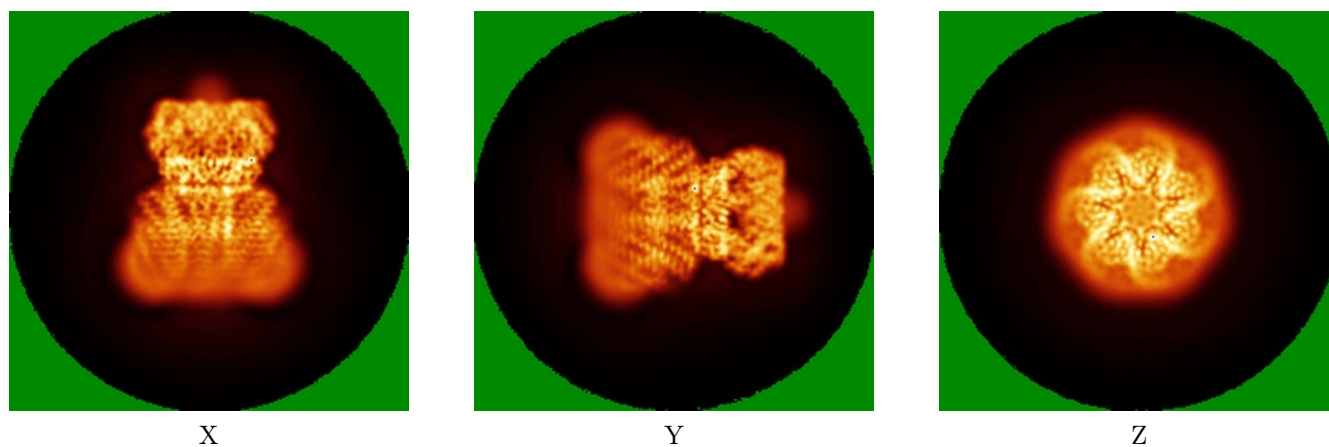
The images above show the largest variance slices of the map in three orthogonal directions.

6.4 Orthogonal standard-deviation projections (False-color) [i](#)

6.4.1 Primary map



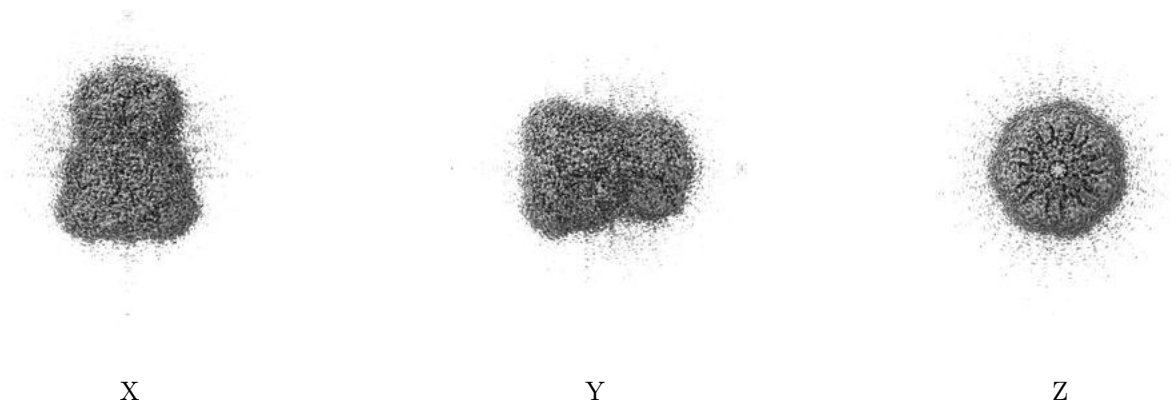
6.4.2 Raw map



The images above show the map standard deviation projections with false color in three orthogonal directions. Minimum values are shown in green, max in blue, and dark to light orange shades represent small to large values respectively.

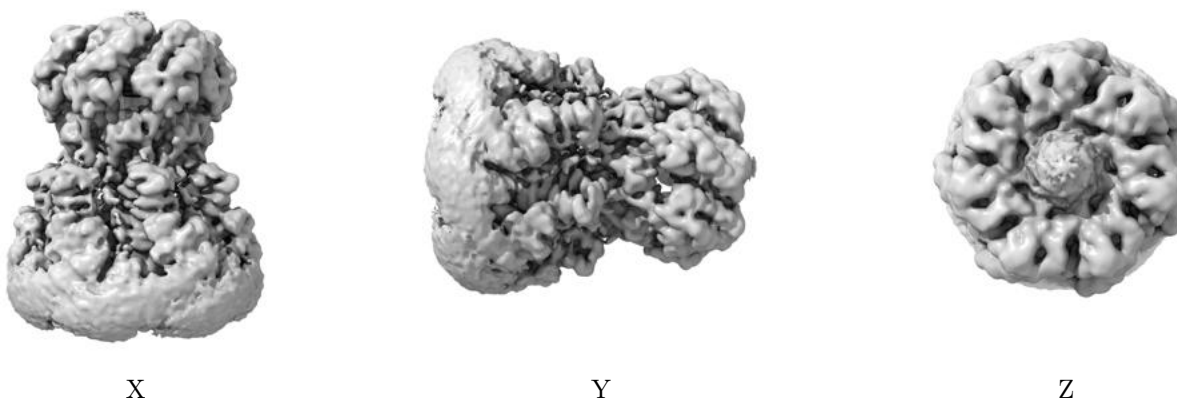
6.5 Orthogonal surface views [i](#)

6.5.1 Primary map



The images above show the 3D surface view of the map at the recommended contour level 0.019. These images, in conjunction with the slice images, may facilitate assessment of whether an appropriate contour level has been provided.

6.5.2 Raw map



These images show the 3D surface of the raw map. The raw map's contour level was selected so that its surface encloses the same volume as the primary map does at its recommended contour level.

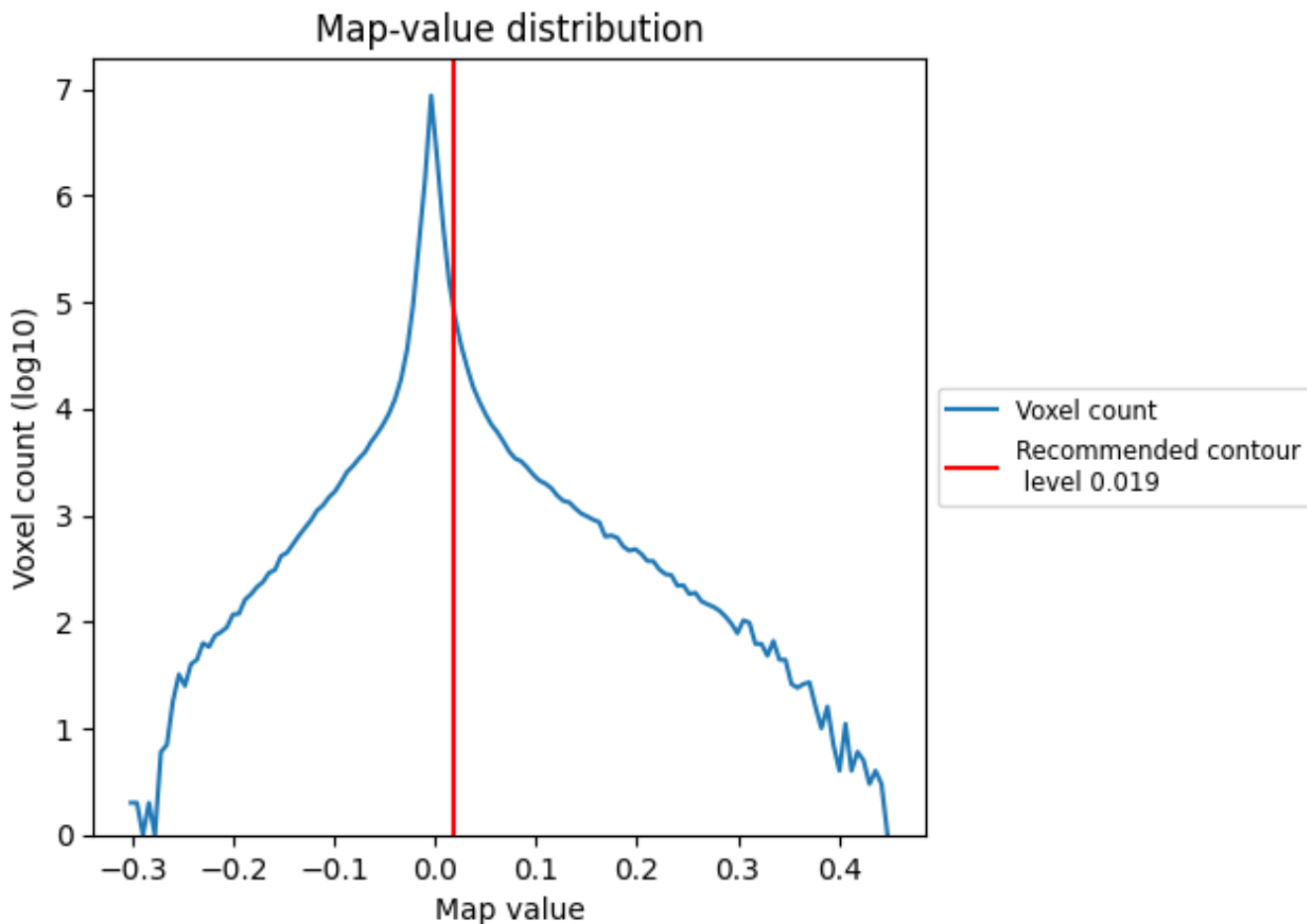
6.6 Mask visualisation [i](#)

This section was not generated. No masks/segmentation were deposited.

7 Map analysis [i](#)

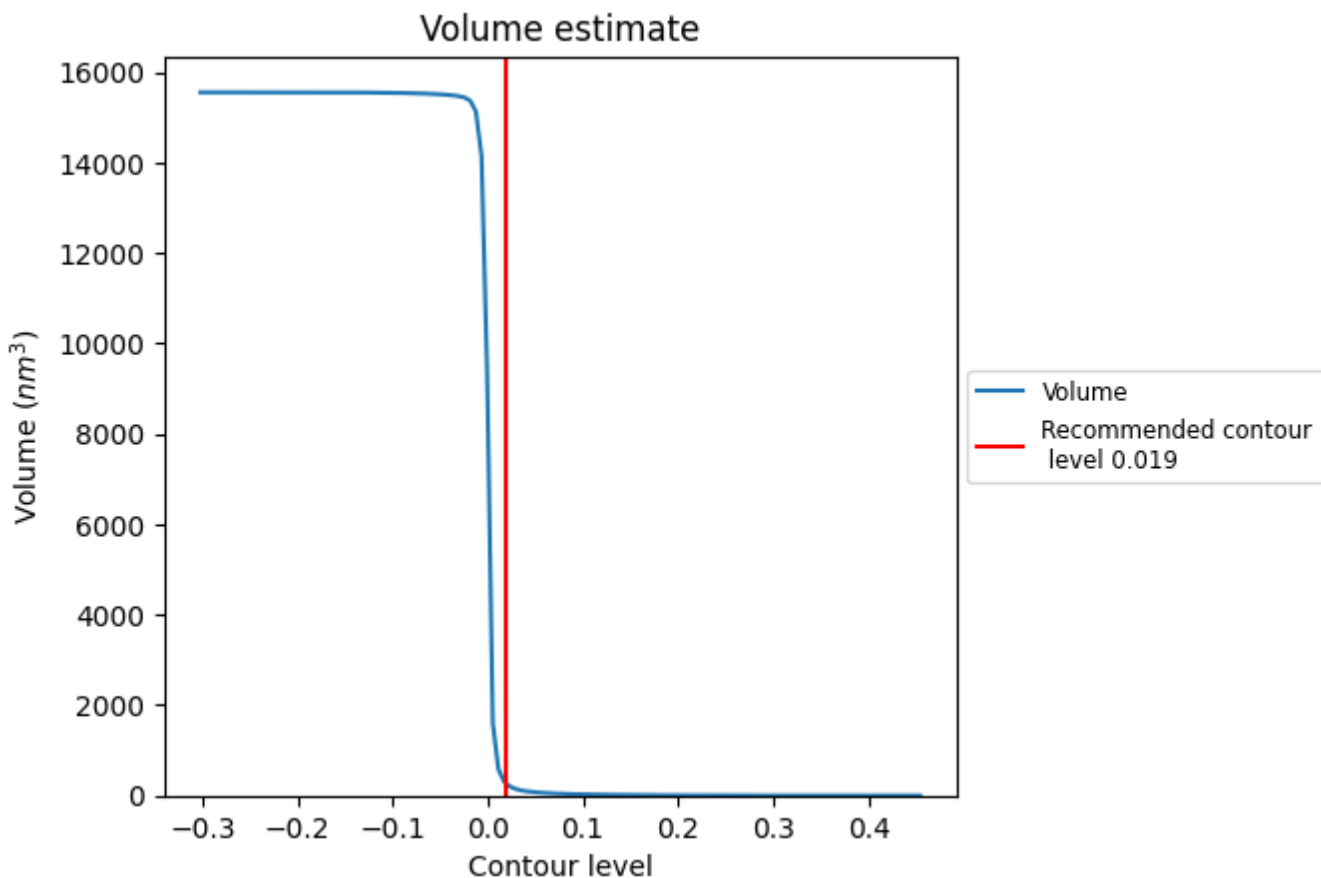
This section contains the results of statistical analysis of the map.

7.1 Map-value distribution [i](#)



The map-value distribution is plotted in 128 intervals along the x-axis. The y-axis is logarithmic. A spike in this graph at zero usually indicates that the volume has been masked.

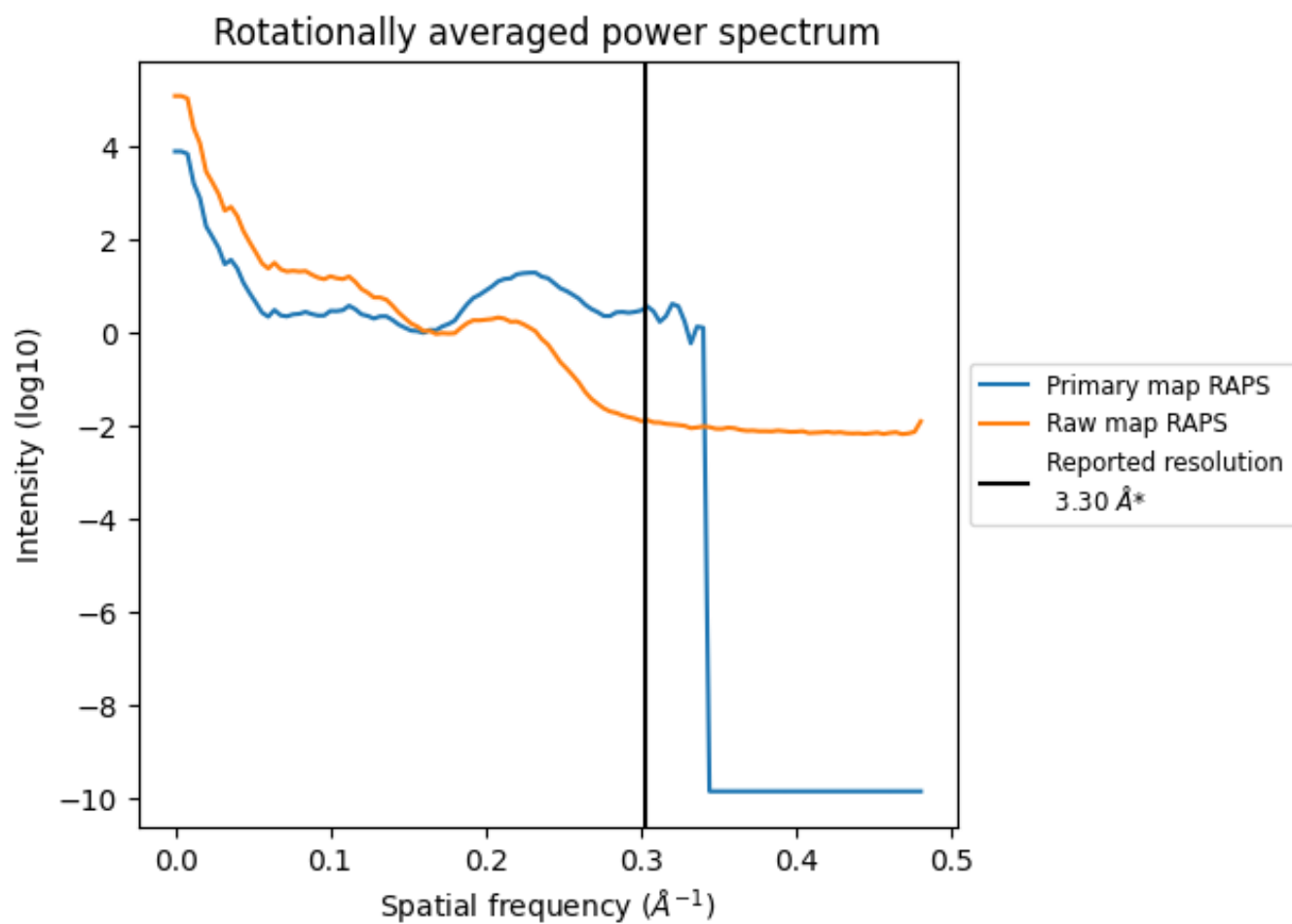
7.2 Volume estimate [i](#)



The volume at the recommended contour level is 277 nm³; this corresponds to an approximate mass of 250 kDa.

The volume estimate graph shows how the enclosed volume varies with the contour level. The recommended contour level is shown as a vertical line and the intersection between the line and the curve gives the volume of the enclosed surface at the given level.

7.3 Rotationally averaged power spectrum [i](#)

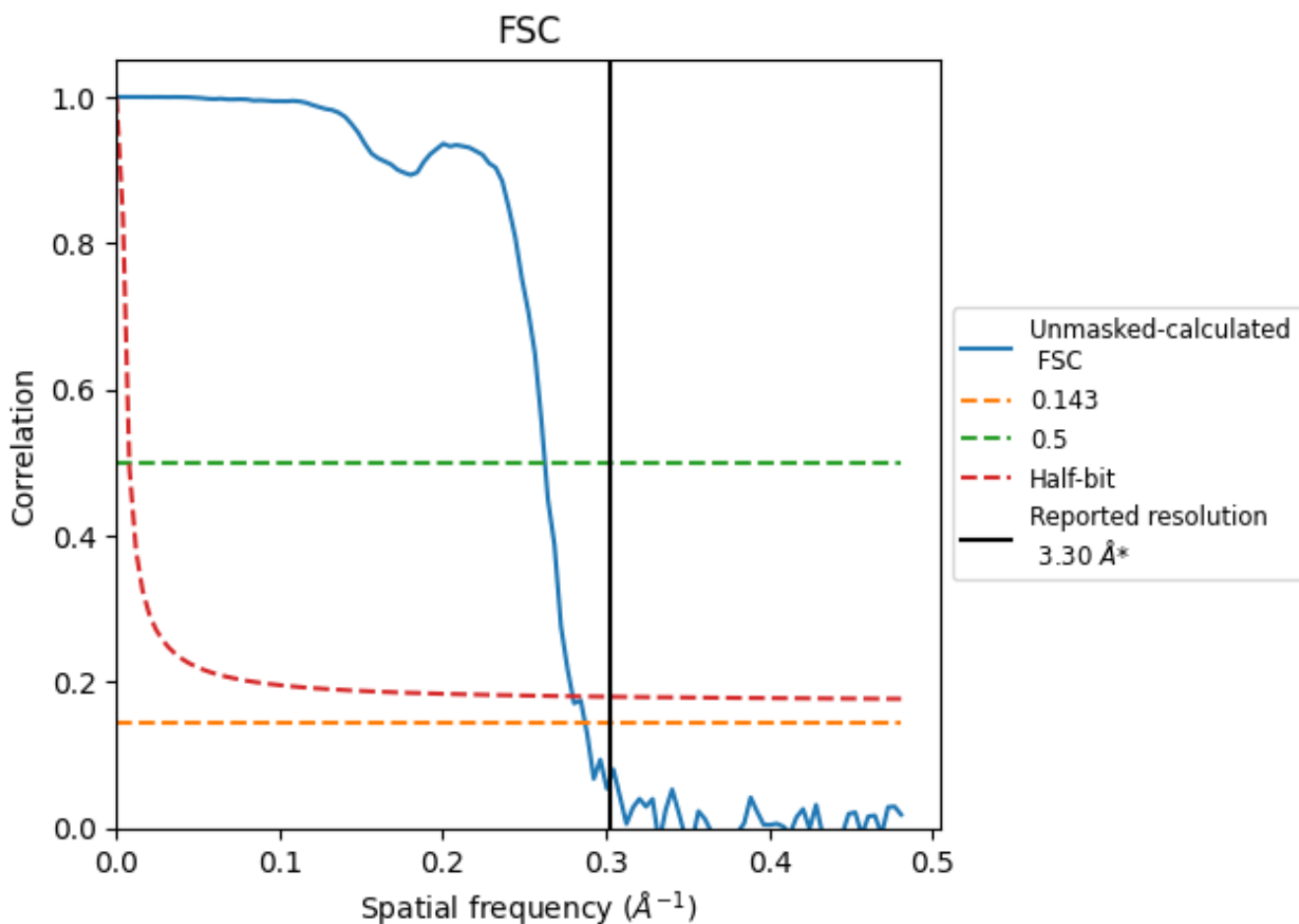


*Reported resolution corresponds to spatial frequency of 0.303 Å⁻¹

8 Fourier-Shell correlation [i](#)

Fourier-Shell Correlation (FSC) is the most commonly used method to estimate the resolution of single-particle and subtomogram-averaged maps. The shape of the curve depends on the imposed symmetry, mask and whether or not the two 3D reconstructions used were processed from a common reference. The reported resolution is shown as a black line. A curve is displayed for the half-bit criterion in addition to lines showing the 0.143 gold standard cut-off and 0.5 cut-off.

8.1 FSC [i](#)



*Reported resolution corresponds to spatial frequency of 0.303 \AA^{-1}

8.2 Resolution estimates [i](#)

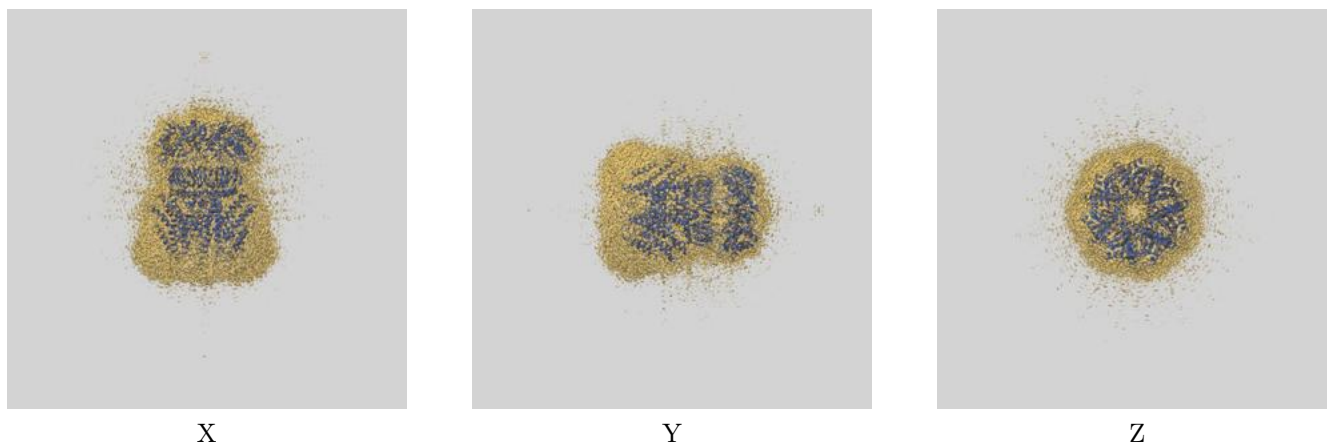
Resolution estimate (Å)	Estimation criterion (FSC cut-off)		
	0.143	0.5	Half-bit
Reported by author	3.30	-	-
Author-provided FSC curve	-	-	-
Unmasked-calculated*	3.48	3.81	3.58

*Resolution estimate based on FSC curve calculated by comparison of deposited half-maps.

9 Map-model fit [i](#)

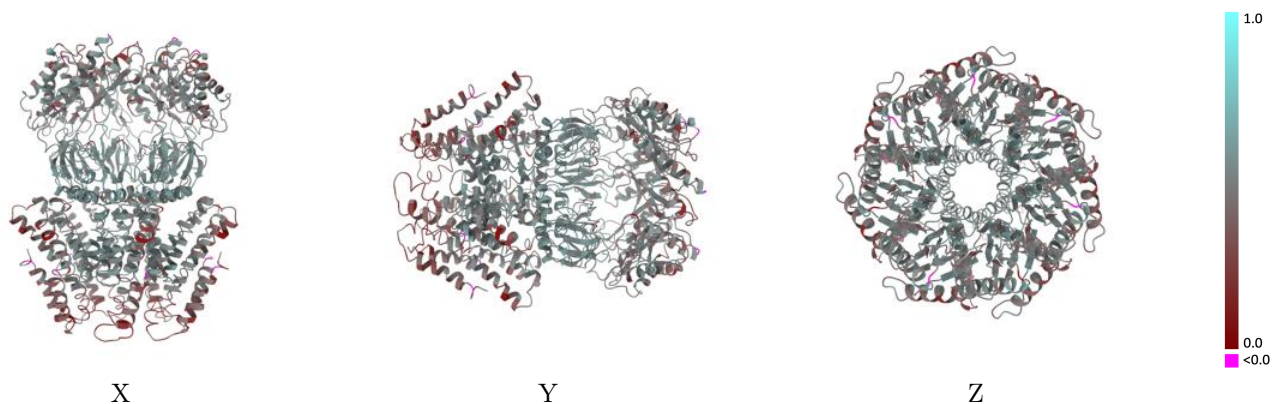
This section contains information regarding the fit between EMDB map EMD-30017 and PDB model 6LYP. Per-residue inclusion information can be found in section 3 on page 4.

9.1 Map-model overlay [i](#)



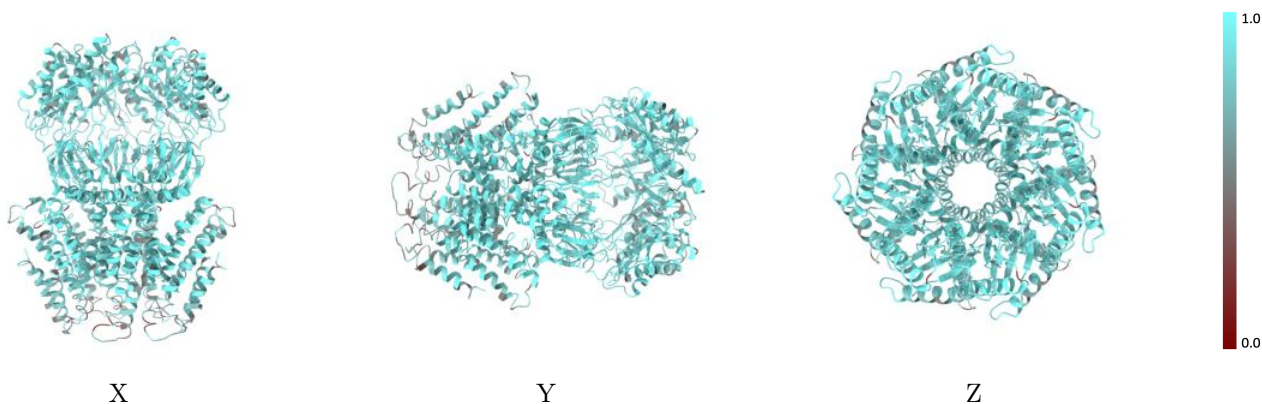
The images above show the 3D surface view of the map at the recommended contour level 0.019 at 50% transparency in yellow overlaid with a ribbon representation of the model coloured in blue. These images allow for the visual assessment of the quality of fit between the atomic model and the map.

9.2 Q-score mapped to coordinate model [i](#)



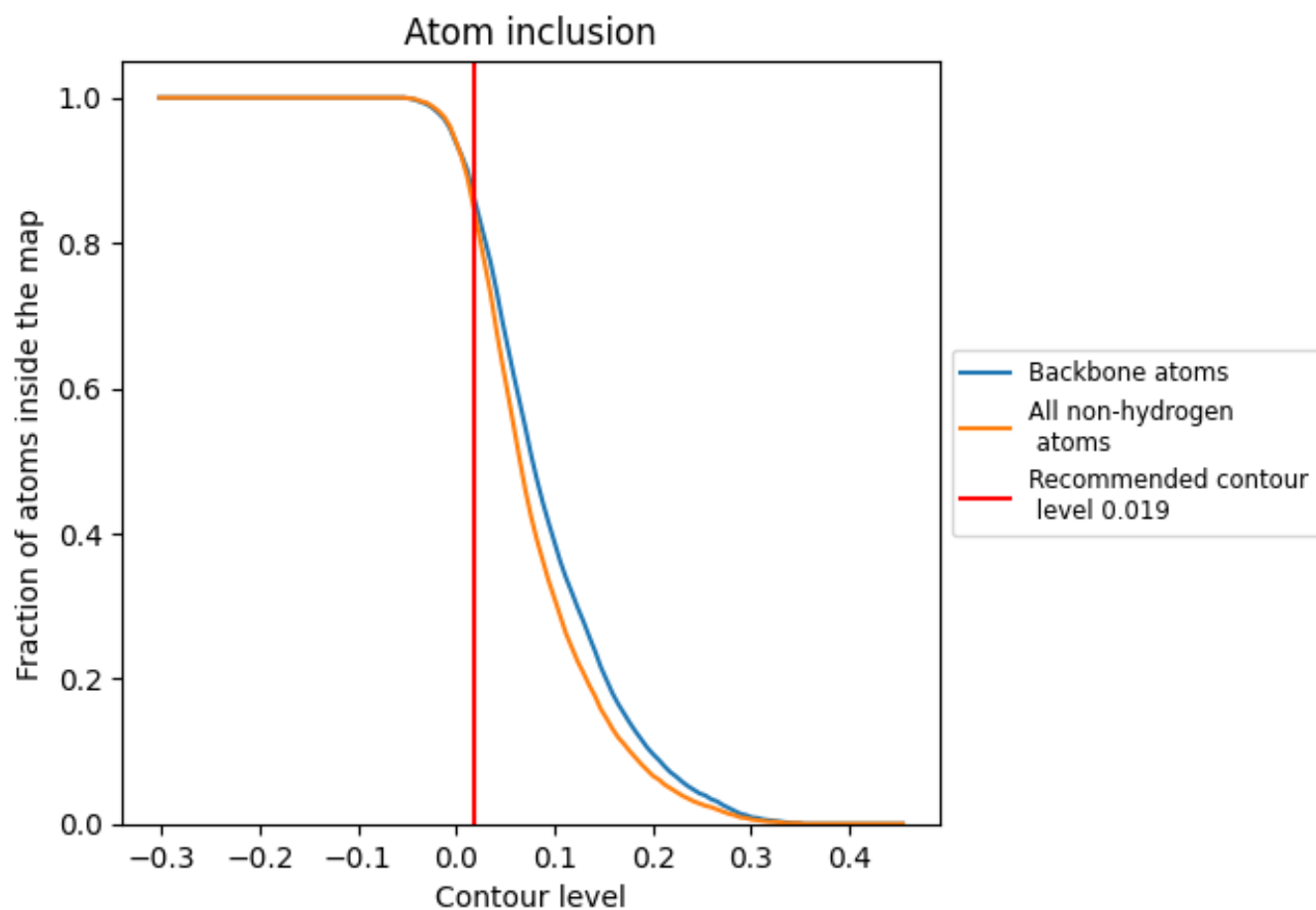
The images above show the model with each residue coloured according to its Q-score. This shows their resolvability in the map with higher Q-score values reflecting better resolvability. Please note: Q-score is calculating the resolvability of atoms, and thus high values are only expected at resolutions at which atoms can be resolved. Low Q-score values may therefore be expected for many entries.

9.3 Atom inclusion mapped to coordinate model [i](#)



The images above show the model with each residue coloured according to its atom inclusion. This shows to what extent they are inside the map at the recommended contour level (0.019).

















9.4 Atom inclusion [i](#)



At the recommended contour level, 86% of all backbone atoms, 84% of all non-hydrogen atoms, are inside the map.

9.5 Map-model fit summary

The table lists the average atom inclusion at the recommended contour level (0.019) and Q-score for the entire model and for each chain.

Chain	Atom inclusion	Q-score
All	 0.8410	 0.4550
A	 0.8420	 0.4560
B	 0.8380	 0.4570
C	 0.8390	 0.4540
D	 0.8390	 0.4530
E	 0.8420	 0.4560
F	 0.8450	 0.4540
G	 0.8410	 0.4570

