



Full wwPDB X-ray Structure Validation Report ⓘ

Aug 30, 2023 – 09:19 AM EDT

PDB ID : 3LX9
Title : Interconversion of Human Lysosomal Enzyme Specificities
Authors : Tomasic, I.B.; Metcalf, M.C.; Guce, A.I.; Clark, N.E.; Garman, S.C.
Deposited on : 2010-02-25
Resolution : 2.04 Å(reported)

This is a Full wwPDB X-ray Structure Validation Report for a publicly released PDB entry.

We welcome your comments at validation@mail.wwpdb.org

A user guide is available at

<https://www.wwpdb.org/validation/2017/XrayValidationReportHelp>

with specific help available everywhere you see the ⓘ symbol.

The types of validation reports are described at

<http://www.wwpdb.org/validation/2017/FAQs#types>.

The following versions of software and data (see [references ⓘ](#)) were used in the production of this report:

MolProbity : 4.02b-467
Mogul : 1.8.5 (274361), CSD as541be (2020)
Xtrriage (Phenix) : 1.13
EDS : 2.35
Percentile statistics : 20191225.v01 (using entries in the PDB archive December 25th 2019)
Refmac : 5.8.0158
CCP4 : 7.0.044 (Gargrove)
Ideal geometry (proteins) : Engh & Huber (2001)
Ideal geometry (DNA, RNA) : Parkinson et al. (1996)
Validation Pipeline (wwPDB-VP) : 2.35

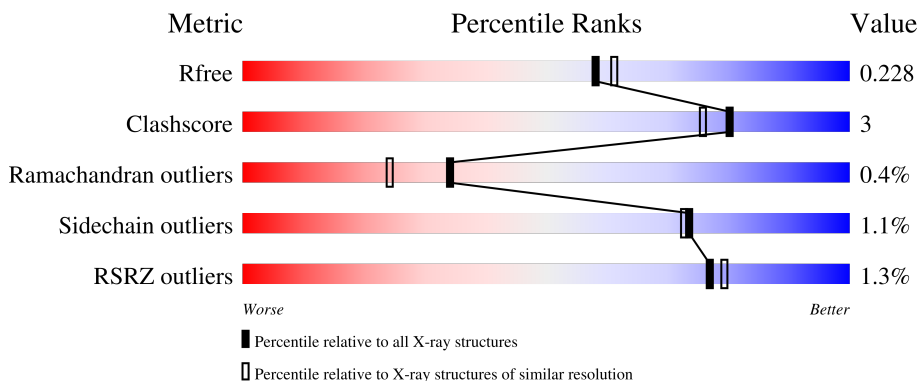
1 Overall quality at a glance

The following experimental techniques were used to determine the structure:

X-RAY DIFFRACTION

The reported resolution of this entry is 2.04 Å.

Percentile scores (ranging between 0-100) for global validation metrics of the entry are shown in the following graphic. The table shows the number of entries on which the scores are based.




Metric	Whole archive (#Entries)	Similar resolution (#Entries, resolution range(Å))
R_{free}	130704	1692 (2.04-2.04)
Clashscore	141614	1773 (2.04-2.04)
Ramachandran outliers	138981	1752 (2.04-2.04)
Sidechain outliers	138945	1752 (2.04-2.04)
RSRZ outliers	127900	1672 (2.04-2.04)

The table below summarises the geometric issues observed across the polymeric chains and their fit to the electron density. The red, orange, yellow and green segments of the lower bar indicate the fraction of residues that contain outliers for ≥ 3 , 2, 1 and 0 types of geometric quality criteria respectively. A grey segment represents the fraction of residues that are not modelled. The numeric value for each fraction is indicated below the corresponding segment, with a dot representing fractions $\leq 5\%$. The upper red bar (where present) indicates the fraction of residues that have poor fit to the electron density. The numeric value is given above the bar.

Mol	Chain	Length	Quality of chain
1	A	404	 90% 6%
1	B	404	 90% 6%
2	C	4	 100%
2	F	4	 100%
3	D	5	 60% 40%

Continued on next page...

Continued from previous page...

Mol	Chain	Length	Quality of chain
4	E	3	 67% 33%

2 Entry composition i

There are 7 unique types of molecules in this entry. The entry contains 7057 atoms, of which 0 are hydrogens and 0 are deuteriums.

In the tables below, the ZeroOcc column contains the number of atoms modelled with zero occupancy, the AltConf column contains the number of residues with at least one atom in alternate conformation and the Trace column contains the number of residues modelled with at most 2 atoms.

- Molecule 1 is a protein called Alpha-galactosidase A.

Mol	Chain	Residues	Atoms					ZeroOcc	AltConf	Trace
			Total	C	N	O	S			
1	A	391	3125	1988	536	575	26	0	0	0
1	B	390	3116	1983	534	573	26	0	0	0

There are 16 discrepancies between the modelled and reference sequences:

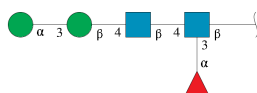
Chain	Residue	Modelled	Actual	Comment	Reference
A	203	SER	GLU	engineered mutation	UNP P06280
A	206	ALA	LEU	engineered mutation	UNP P06280
A	430	HIS	-	expression tag	UNP P06280
A	431	HIS	-	expression tag	UNP P06280
A	432	HIS	-	expression tag	UNP P06280
A	433	HIS	-	expression tag	UNP P06280
A	434	HIS	-	expression tag	UNP P06280
A	435	HIS	-	expression tag	UNP P06280
B	203	SER	GLU	engineered mutation	UNP P06280
B	206	ALA	LEU	engineered mutation	UNP P06280
B	430	HIS	-	expression tag	UNP P06280
B	431	HIS	-	expression tag	UNP P06280
B	432	HIS	-	expression tag	UNP P06280
B	433	HIS	-	expression tag	UNP P06280
B	434	HIS	-	expression tag	UNP P06280
B	435	HIS	-	expression tag	UNP P06280

- Molecule 2 is an oligosaccharide called alpha-D-mannopyranose-(1-3)-beta-D-mannopyranose-(1-4)-2-acetamido-2-deoxy-beta-D-glucopyranose-(1-4)-2-acetamido-2-deoxy-beta-D-glucopyranose.



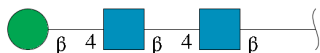
Mol	Chain	Residues	Atoms				ZeroOcc	AltConf	Trace
2	C	4	Total	C	N	O	0	0	0
			50	28	2	20			
2	F	4	Total	C	N	O	0	0	0
			50	28	2	20			

- Molecule 3 is an oligosaccharide called alpha-D-mannopyranose-(1-3)-beta-D-mannopyranose-(1-4)-2-acetamido-2-deoxy-beta-D-glucopyranose-(1-4)-[alpha-L-fucopyranose-(1-3)]2-acetamido-2-deoxy-beta-D-glucopyranose.



Mol	Chain	Residues	Atoms				ZeroOcc	AltConf	Trace
3	D	5	Total	C	N	O	0	0	0
			60	34	2	24			

- Molecule 4 is an oligosaccharide called beta-D-mannopyranose-(1-4)-2-acetamido-2-deoxy-beta-D-glucopyranose-(1-4)-2-acetamido-2-deoxy-beta-D-glucopyranose.



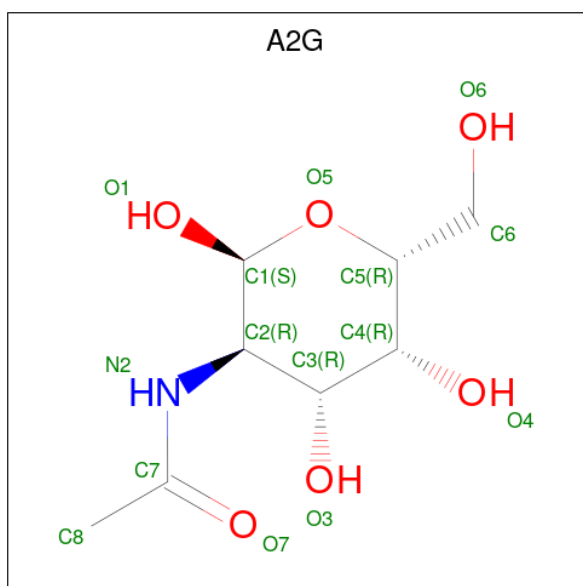
Mol	Chain	Residues	Atoms				ZeroOcc	AltConf	Trace
4	E	3	Total	C	N	O	0	0	0
			39	22	2	15			

- Molecule 5 is 2-acetamido-2-deoxy-beta-D-glucopyranose (three-letter code: NAG) (formula: C₈H₁₅NO₆).



Mol	Chain	Residues	Atoms				ZeroOcc	AltConf
			Total	C	N	O		
5	A	1	14	8	1	5	0	0
5	B	1	14	8	1	5	0	0

- Molecule 6 is 2-acetamido-2-deoxy-alpha-D-galactopyranose (three-letter code: A2G) (formula: C₈H₁₅NO₆).



Mol	Chain	Residues	Atoms				ZeroOcc	AltConf
			Total	C	N	O		
6	A	1	15	8	1	6	0	0

Continued on next page...

Continued from previous page...

Mol	Chain	Residues	Atoms				ZeroOcc	AltConf
			Total	C	N	O		
6	B	1	15	8	1	6	0	0

- Molecule 7 is water.

Mol	Chain	Residues	Atoms		ZeroOcc	AltConf
7	A	283	Total	O	0	0
			283	283		
7	B	276	Total	O	0	0
			276	276		

e

Chain D:  60% 40%



- Molecule 4: beta-D-mannopyranose-(1-4)-2-acetamido-2-deoxy-beta-D-glucopyranose-(1-4)-2-acetamido-2-deoxy-beta-D-glucopyranose

Chain E:  67% 33%



4 Data and refinement statistics

Property	Value	Source
Space group	C 2 2 21	Depositor
Cell constants a, b, c, α , β , γ	89.95Å 139.49Å 182.58Å 90.00° 90.00° 90.00°	Depositor
Resolution (Å)	43.69 – 2.04 43.67 – 2.04	Depositor EDS
% Data completeness (in resolution range)	98.9 (43.69-2.04) 98.9 (43.67-2.04)	Depositor EDS
R_{merge}	0.12	Depositor
R_{sym}	(Not available)	Depositor
$\langle I/\sigma(I) \rangle$ ¹	2.05 (at 2.05Å)	Xtrriage
Refinement program	REFMAC 5.5.0070	Depositor
R, R_{free}	0.176 , 0.218 0.184 , 0.228	Depositor DCC
R_{free} test set	3623 reflections (5.03%)	wwPDB-VP
Wilson B-factor (Å ²)	32.9	Xtrriage
Anisotropy	0.138	Xtrriage
Bulk solvent k_{sol} (e/Å ³), B_{sol} (Å ²)	0.36 , 40.4	EDS
L-test for twinning ²	$\langle L \rangle = 0.50$, $\langle L^2 \rangle = 0.34$	Xtrriage
Estimated twinning fraction	No twinning to report.	Xtrriage
F_o, F_c correlation	0.96	EDS
Total number of atoms	7057	wwPDB-VP
Average B, all atoms (Å ²)	37.0	wwPDB-VP

Xtrriage's analysis on translational NCS is as follows: *The largest off-origin peak in the Patterson function is 3.78% of the height of the origin peak. No significant pseudotranslation is detected.*

¹Intensities estimated from amplitudes.

²Theoretical values of $\langle |L| \rangle$, $\langle L^2 \rangle$ for acentric reflections are 0.5, 0.333 respectively for untwinned datasets, and 0.375, 0.2 for perfectly twinned datasets.

5 Model quality

5.1 Standard geometry

Bond lengths and bond angles in the following residue types are not validated in this section: NAG, BMA, A2G, FUC, MAN

The Z score for a bond length (or angle) is the number of standard deviations the observed value is removed from the expected value. A bond length (or angle) with $|Z| > 5$ is considered an outlier worth inspection. RMSZ is the root-mean-square of all Z scores of the bond lengths (or angles).

Mol	Chain	Bond lengths		Bond angles	
		RMSZ	# Z >5	RMSZ	# Z >5
1	A	0.31	0/3212	0.51	0/4362
1	B	0.30	0/3203	0.50	0/4350
All	All	0.30	0/6415	0.50	0/8712

There are no bond length outliers.

There are no bond angle outliers.

There are no chirality outliers.

There are no planarity outliers.

5.2 Too-close contacts

In the following table, the Non-H and H(model) columns list the number of non-hydrogen atoms and hydrogen atoms in the chain respectively. The H(added) column lists the number of hydrogen atoms added and optimized by MolProbity. The Clashes column lists the number of clashes within the asymmetric unit, whereas Symm-Clashes lists symmetry-related clashes.

Mol	Chain	Non-H	H(model)	H(added)	Clashes	Symm-Clashes
1	A	3125	0	2982	18	0
1	B	3116	0	2974	16	0
2	C	50	0	43	0	0
2	F	50	0	43	0	0
3	D	60	0	52	0	0
4	E	39	0	34	0	0
5	A	14	0	13	1	0
5	B	14	0	13	0	0
6	A	15	0	12	0	0
6	B	15	0	12	1	0
7	A	283	0	0	0	0

Continued on next page...

Continued from previous page...

Mol	Chain	Non-H	H(model)	H(added)	Clashes	Symm-Clashes
7	B	276	0	0	0	0
All	All	7057	0	6178	34	0

The all-atom clashscore is defined as the number of clashes found per 1000 atoms (including hydrogen atoms). The all-atom clashscore for this structure is 3.

All (34) close contacts within the same asymmetric unit are listed below, sorted by their clash magnitude.

Atom-1	Atom-2	Interatomic distance (Å)	Clash overlap (Å)
1:A:403:LEU:HD11	1:A:415:LEU:HD13	1.83	0.60
1:B:99:GLN:HE21	1:B:99:GLN:HA	1.70	0.57
1:A:216:TYR:HB3	1:A:256:VAL:HG21	1.86	0.57
1:A:386:GLN:HA	1:A:415:LEU:HD23	1.88	0.56
1:A:403:LEU:HD11	1:A:415:LEU:CD1	2.36	0.55
1:A:379:ASN:HD22	1:A:380:PRO:HA	1.73	0.54
1:A:73:ALA:HB2	1:A:89:LEU:CD2	2.39	0.53
1:B:202:CYS:O	1:B:226:TRP:HA	2.11	0.51
1:B:204:TRP:HB3	1:B:205:PRO:HD3	1.93	0.49
1:A:99:GLN:HE21	1:A:99:GLN:HA	1.78	0.48
1:B:73:ALA:HB2	1:B:89:LEU:HD22	1.95	0.48
1:B:403:LEU:HD21	1:B:415:LEU:HD13	1.95	0.48
1:A:232:ILE:HD11	1:A:239:ILE:HD13	1.95	0.47
1:B:75:LEU:HD11	1:B:301:ARG:HG2	1.97	0.47
1:A:202:CYS:O	1:A:226:TRP:HA	2.14	0.47
1:A:232:ILE:HD11	1:A:239:ILE:CD1	2.45	0.47
1:A:204:TRP:HB3	1:A:205:PRO:HD3	1.98	0.46
1:A:174:CYS:SG	5:A:639:NAG:H81	2.55	0.46
1:B:216:TYR:HB3	1:B:256:VAL:HG21	1.96	0.46
1:A:73:ALA:HB2	1:A:89:LEU:HD22	1.98	0.45
1:B:177:LEU:HD11	1:B:211:PHE:HB2	1.98	0.44
1:A:137:VAL:HG12	1:A:171:GLY:HA2	1.99	0.44
1:B:73:ALA:HB2	1:B:89:LEU:CD2	2.48	0.43
1:B:253:ILE:O	1:B:256:VAL:HG13	2.18	0.43
1:A:32:LEU:N	1:A:220:ARG:O	2.52	0.43
1:B:137:VAL:HG12	1:B:171:GLY:HA2	2.00	0.43
1:B:227:ARG:NH2	6:B:2000:A2G:H8B	2.35	0.42
1:A:177:LEU:HD12	1:A:212:GLN:NE2	2.35	0.41
1:B:91:ILE:HG22	1:B:92:ASP:O	2.21	0.41
1:B:373:GLY:HA3	1:B:377:ALA:HB2	2.02	0.41
1:B:373:GLY:O	1:B:376:VAL:HG22	2.21	0.41
1:B:403:LEU:HD21	1:B:415:LEU:CD1	2.50	0.41

Continued on next page...

Continued from previous page...

Atom-1	Atom-2	Interatomic distance (Å)	Clash overlap (Å)
1:A:204:TRP:HB3	1:A:205:PRO:CD	2.51	0.40
1:A:373:GLY:HA3	1:A:377:ALA:HB2	2.03	0.40

There are no symmetry-related clashes.

5.3 Torsion angles [i](#)

5.3.1 Protein backbone [i](#)

In the following table, the Percentiles column shows the percent Ramachandran outliers of the chain as a percentile score with respect to all X-ray entries followed by that with respect to entries of similar resolution.

The Analysed column shows the number of residues for which the backbone conformation was analysed, and the total number of residues.

Mol	Chain	Analysed	Favoured	Allowed	Outliers	Percentiles	
1	A	389/404 (96%)	377 (97%)	10 (3%)	2 (0%)	29	18
1	B	388/404 (96%)	377 (97%)	10 (3%)	1 (0%)	41	31
All	All	777/808 (96%)	754 (97%)	20 (3%)	3 (0%)	34	24

All (3) Ramachandran outliers are listed below:

Mol	Chain	Res	Type
1	A	266	ASP
1	B	266	ASP
1	A	204	TRP

5.3.2 Protein sidechains [i](#)

In the following table, the Percentiles column shows the percent sidechain outliers of the chain as a percentile score with respect to all X-ray entries followed by that with respect to entries of similar resolution.

The Analysed column shows the number of residues for which the sidechain conformation was analysed, and the total number of residues.

Mol	Chain	Analysed	Rotameric	Outliers	Percentiles	
1	A	331/344 (96%)	326 (98%)	5 (2%)	65	62

Continued on next page...

Continued from previous page...

Mol	Chain	Analysed	Rotameric	Outliers	Percentiles	
1	B	330/344 (96%)	328 (99%)	2 (1%)	86	87
All	All	661/688 (96%)	654 (99%)	7 (1%)	73	73

All (7) residues with a non-rotameric sidechain are listed below:

Mol	Chain	Res	Type
1	A	99	GLN
1	A	111	GLN
1	A	252	ARG
1	A	379	ASN
1	A	403	LEU
1	B	99	GLN
1	B	256	VAL

Sometimes sidechains can be flipped to improve hydrogen bonding and reduce clashes. All (12) such sidechains are listed below:

Mol	Chain	Res	Type
1	A	99	GLN
1	A	111	GLN
1	A	122	ASN
1	A	179	ASN
1	A	221	GLN
1	A	306	GLN
1	A	330	GLN
1	A	333	GLN
1	A	336	ASN
1	A	379	ASN
1	B	99	GLN
1	B	157	GLN

5.3.3 RNA [i](#)

There are no RNA molecules in this entry.

5.4 Non-standard residues in protein, DNA, RNA chains [i](#)

There are no non-standard protein/DNA/RNA residues in this entry.

5.5 Carbohydrates i

16 monosaccharides are modelled in this entry.

In the following table, the Counts columns list the number of bonds (or angles) for which Mogul statistics could be retrieved, the number of bonds (or angles) that are observed in the model and the number of bonds (or angles) that are defined in the Chemical Component Dictionary. The Link column lists molecule types, if any, to which the group is linked. The Z score for a bond length (or angle) is the number of standard deviations the observed value is removed from the expected value. A bond length (or angle) with $|Z| > 2$ is considered an outlier worth inspection. RMSZ is the root-mean-square of all Z scores of the bond lengths (or angles).

Mol	Type	Chain	Res	Link	Bond lengths			Bond angles		
					Counts	RMSZ	# Z > 2	Counts	RMSZ	# Z > 2
2	NAG	C	1	1,2	14,14,15	0.53	0	17,19,21	0.61	0
2	NAG	C	2	2	14,14,15	0.54	0	17,19,21	0.73	0
2	BMA	C	3	2	11,11,12	0.29	0	15,15,17	0.76	0
2	MAN	C	4	2	11,11,12	0.63	0	15,15,17	0.95	0
3	NAG	D	1	3,1	14,14,15	0.43	0	17,19,21	0.95	1 (5%)
3	NAG	D	2	3	14,14,15	0.51	0	17,19,21	0.71	0
3	BMA	D	3	3	11,11,12	0.30	0	15,15,17	0.70	0
3	MAN	D	4	3	11,11,12	0.67	0	15,15,17	1.41	2 (13%)
3	FUC	D	5	3	10,10,11	0.61	0	14,14,16	0.79	0
4	NAG	E	1	1,4	14,14,15	0.49	0	17,19,21	0.79	0
4	NAG	E	2	4	14,14,15	0.51	0	17,19,21	0.85	1 (5%)
4	BMA	E	3	4	11,11,12	0.26	0	15,15,17	0.70	0
2	NAG	F	1	1,2	14,14,15	0.61	0	17,19,21	0.68	0
2	NAG	F	2	2	14,14,15	0.53	0	17,19,21	0.76	0
2	BMA	F	3	2	11,11,12	0.34	0	15,15,17	0.83	0
2	MAN	F	4	2	11,11,12	0.62	0	15,15,17	0.72	0

In the following table, the Chirals column lists the number of chiral outliers, the number of chiral centers analysed, the number of these observed in the model and the number defined in the Chemical Component Dictionary. Similar counts are reported in the Torsion and Rings columns. '-' means no outliers of that kind were identified.

Mol	Type	Chain	Res	Link	Chirals	Torsions	Rings
2	NAG	C	1	1,2	-	0/6/23/26	0/1/1/1
2	NAG	C	2	2	-	0/6/23/26	0/1/1/1
2	BMA	C	3	2	-	0/2/19/22	0/1/1/1
2	MAN	C	4	2	-	2/2/19/22	0/1/1/1
3	NAG	D	1	3,1	-	0/6/23/26	0/1/1/1
3	NAG	D	2	3	-	2/6/23/26	0/1/1/1
3	BMA	D	3	3	-	2/2/19/22	0/1/1/1

Continued on next page...

Continued from previous page...

Mol	Type	Chain	Res	Link	Chirals	Torsions	Rings
3	MAN	D	4	3	-	1/2/19/22	0/1/1/1
3	FUC	D	5	3	-	-	0/1/1/1
4	NAG	E	1	1,4	-	0/6/23/26	0/1/1/1
4	NAG	E	2	4	-	2/6/23/26	0/1/1/1
4	BMA	E	3	4	-	0/2/19/22	0/1/1/1
2	NAG	F	1	1,2	-	0/6/23/26	0/1/1/1
2	NAG	F	2	2	-	0/6/23/26	0/1/1/1
2	BMA	F	3	2	-	0/2/19/22	0/1/1/1
2	MAN	F	4	2	-	1/2/19/22	0/1/1/1

There are no bond length outliers.

All (4) bond angle outliers are listed below:

Mol	Chain	Res	Type	Atoms	Z	Observed(°)	Ideal(°)
3	D	4	MAN	C3-C4-C5	3.45	116.39	110.24
3	D	4	MAN	C1-O5-C5	2.28	115.29	112.19
4	E	2	NAG	O5-C5-C6	2.14	110.57	107.20
3	D	1	NAG	C1-O5-C5	2.09	115.03	112.19

There are no chirality outliers.

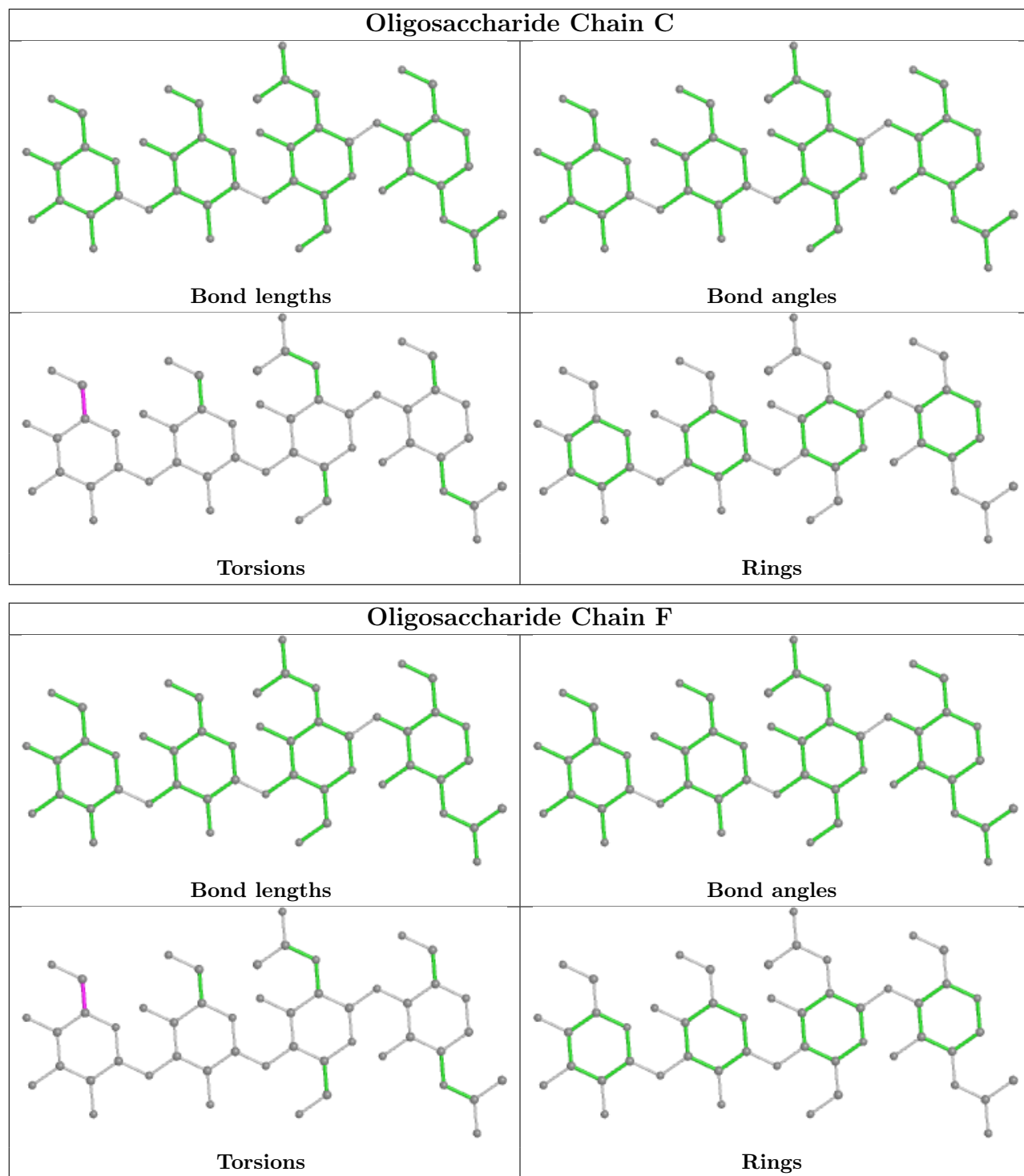
All (10) torsion outliers are listed below:

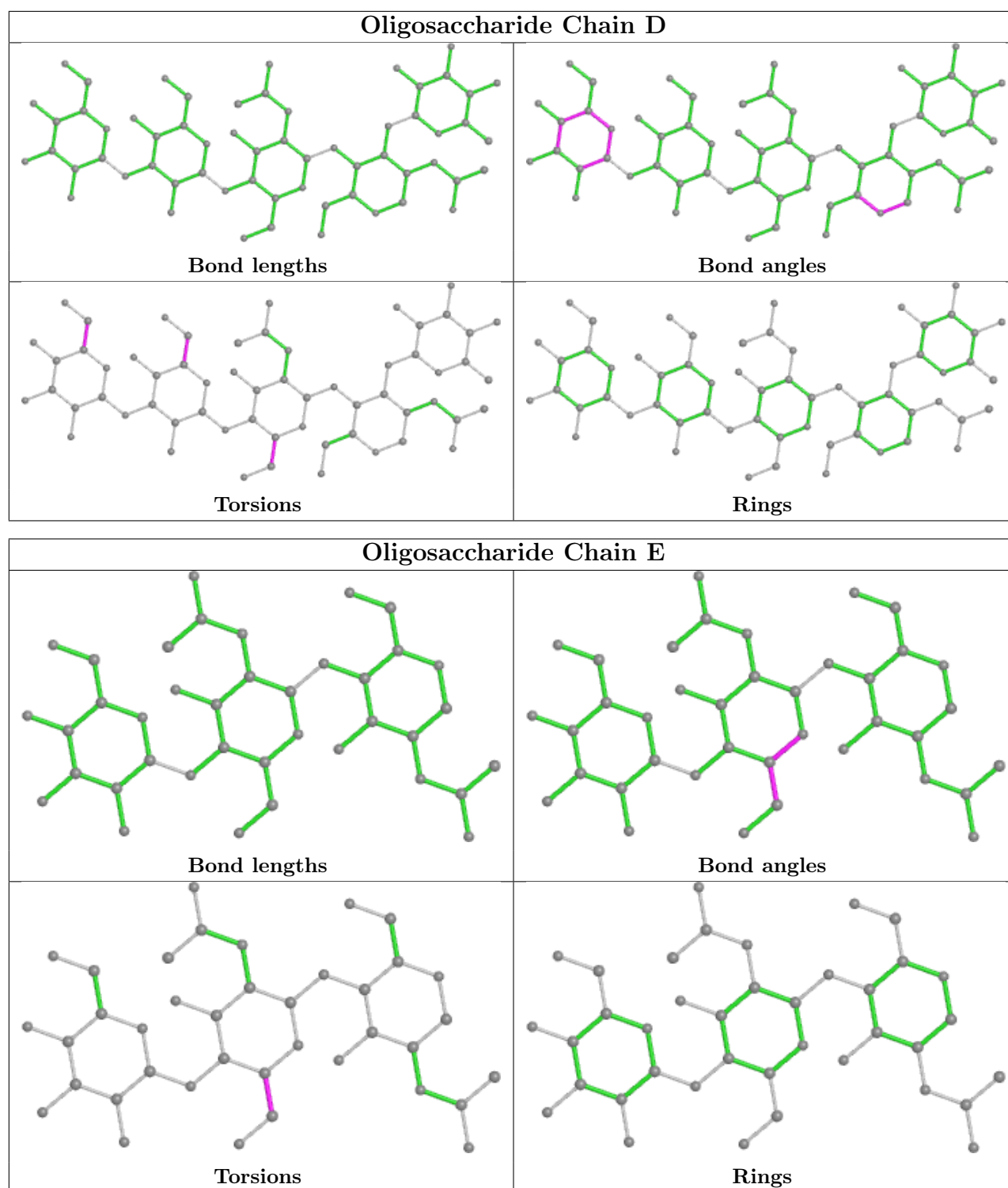
Mol	Chain	Res	Type	Atoms
4	E	2	NAG	O5-C5-C6-O6
2	C	4	MAN	O5-C5-C6-O6
3	D	3	BMA	O5-C5-C6-O6
3	D	3	BMA	C4-C5-C6-O6
4	E	2	NAG	C4-C5-C6-O6
2	C	4	MAN	C4-C5-C6-O6
3	D	4	MAN	O5-C5-C6-O6
3	D	2	NAG	C4-C5-C6-O6
2	F	4	MAN	C4-C5-C6-O6
3	D	2	NAG	O5-C5-C6-O6

There are no ring outliers.

No monomer is involved in short contacts.

The following is a two-dimensional graphical depiction of Mogul quality analysis of bond lengths, bond angles, torsion angles, and ring geometry for oligosaccharide.





5.6 Ligand geometry [i](#)

4 ligands are modelled in this entry.

In the following table, the Counts columns list the number of bonds (or angles) for which Mogul statistics could be retrieved, the number of bonds (or angles) that are observed in the model and the number of bonds (or angles) that are defined in the Chemical Component Dictionary. The

Link column lists molecule types, if any, to which the group is linked. The Z score for a bond length (or angle) is the number of standard deviations the observed value is removed from the expected value. A bond length (or angle) with $|Z| > 2$ is considered an outlier worth inspection. RMSZ is the root-mean-square of all Z scores of the bond lengths (or angles).

Mol	Type	Chain	Res	Link	Bond lengths			Bond angles		
					Counts	RMSZ	# Z > 2	Counts	RMSZ	# Z > 2
6	A2G	A	1000	-	15,15,15	0.49	0	21,21,21	1.99	6 (28%)
6	A2G	B	2000	-	15,15,15	0.40	0	21,21,21	1.92	5 (23%)
5	NAG	B	715	1	14,14,15	0.48	0	17,19,21	0.89	1 (5%)
5	NAG	A	639	1	14,14,15	0.46	0	17,19,21	1.09	1 (5%)

In the following table, the Chirals column lists the number of chiral outliers, the number of chiral centers analysed, the number of these observed in the model and the number defined in the Chemical Component Dictionary. Similar counts are reported in the Torsion and Rings columns. '-' means no outliers of that kind were identified.

Mol	Type	Chain	Res	Link	Chirals	Torsions	Rings
6	A2G	A	1000	-	-	0/6/26/26	0/1/1/1
6	A2G	B	2000	-	-	0/6/26/26	0/1/1/1
5	NAG	B	715	1	-	2/6/23/26	0/1/1/1
5	NAG	A	639	1	-	0/6/23/26	0/1/1/1

There are no bond length outliers.

All (13) bond angle outliers are listed below:

Mol	Chain	Res	Type	Atoms	Z	Observed(°)	Ideal(°)
6	A	1000	A2G	O5-C1-C2	5.56	115.10	109.52
6	B	2000	A2G	O1-C1-C2	4.67	118.92	109.22
6	A	1000	A2G	O1-C1-C2	4.39	118.35	109.22
6	B	2000	A2G	O5-C1-C2	4.11	113.65	109.52
6	B	2000	A2G	O1-C1-O5	3.69	121.47	110.38
5	A	639	NAG	C1-O5-C5	3.53	116.97	112.19
5	B	715	NAG	C1-O5-C5	3.04	116.31	112.19
6	A	1000	A2G	O1-C1-O5	2.97	119.29	110.38
6	B	2000	A2G	C3-C2-N2	2.66	115.64	110.62
6	B	2000	A2G	C1-C2-C3	-2.29	107.42	110.54
6	A	1000	A2G	C1-C2-C3	-2.28	107.43	110.54
6	A	1000	A2G	C4-C3-C2	-2.27	107.02	110.34
6	A	1000	A2G	C3-C2-N2	2.21	114.79	110.62

There are no chirality outliers.

All (2) torsion outliers are listed below:

Mol	Chain	Res	Type	Atoms
5	B	715	NAG	C8-C7-N2-C2
5	B	715	NAG	O7-C7-N2-C2

There are no ring outliers.

2 monomers are involved in 2 short contacts:

Mol	Chain	Res	Type	Clashes	Symm-Clashes
6	B	2000	A2G	1	0
5	A	639	NAG	1	0

5.7 Other polymers [i](#)

There are no such residues in this entry.

5.8 Polymer linkage issues [i](#)

There are no chain breaks in this entry.

6 Fit of model and data [i](#)

6.1 Protein, DNA and RNA chains [i](#)

In the following table, the column labelled ‘#RSRZ> 2’ contains the number (and percentage) of RSRZ outliers, followed by percent RSRZ outliers for the chain as percentile scores relative to all X-ray entries and entries of similar resolution. The OWAB column contains the minimum, median, 95th percentile and maximum values of the occupancy-weighted average B-factor per residue. The column labelled ‘Q< 0.9’ lists the number of (and percentage) of residues with an average occupancy less than 0.9.

Mol	Chain	Analysed	<RSRZ>	#RSRZ>2	OWAB(Å ²)	Q<0.9
1	A	391/404 (96%)	-0.40	5 (1%) 77 79	23, 33, 54, 99	0
1	B	390/404 (96%)	-0.46	5 (1%) 77 79	20, 33, 56, 86	0
All	All	781/808 (96%)	-0.43	10 (1%) 77 79	20, 33, 56, 99	0

All (10) RSRZ outliers are listed below:

Mol	Chain	Res	Type	RSRZ
1	A	422	GLN	4.0
1	A	421	MET	3.9
1	A	209	TRP	3.6
1	B	211	PHE	2.9
1	B	209	TRP	2.6
1	A	396	PHE	2.4
1	B	421	MET	2.2
1	A	402	ARG	2.1
1	B	213	LYS	2.0
1	B	212	GLN	2.0

6.2 Non-standard residues in protein, DNA, RNA chains [i](#)

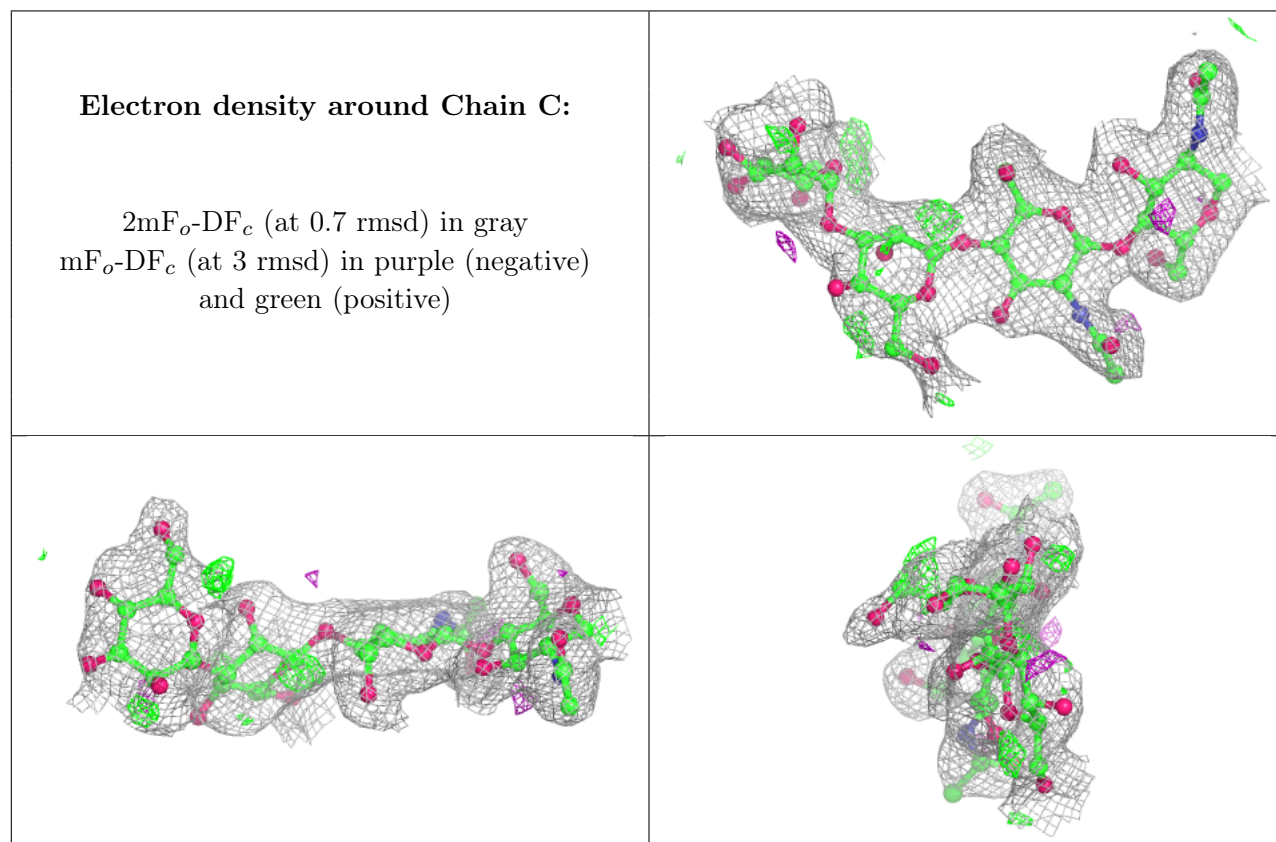
There are no non-standard protein/DNA/RNA residues in this entry.

6.3 Carbohydrates [i](#)

In the following table, the Atoms column lists the number of modelled atoms in the group and the number defined in the chemical component dictionary. The B-factors column lists the minimum, median, 95th percentile and maximum values of B factors of atoms in the group. The column labelled ‘Q< 0.9’ lists the number of atoms with occupancy less than 0.9.

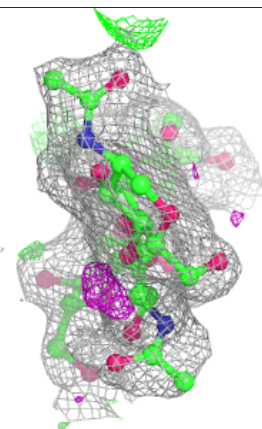
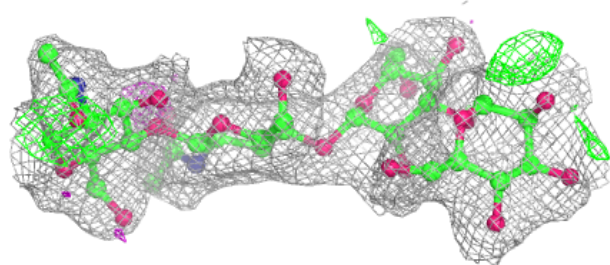
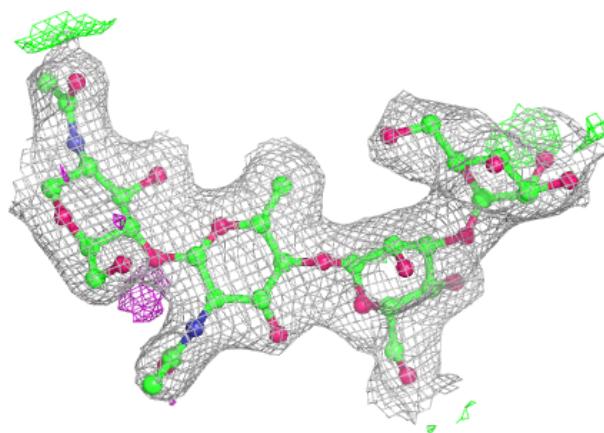
Mol	Type	Chain	Res	Atoms	RSCC	RSR	B-factors(\AA^2)	Q<0.9
4	BMA	E	3	11/12	0.74	0.38	91,104,107,111	0
2	MAN	C	4	11/12	0.81	0.13	69,74,79,79	0
2	BMA	F	3	11/12	0.83	0.22	48,65,78,78	0
4	NAG	E	1	14/15	0.85	0.17	37,63,75,78	0
2	MAN	F	4	11/12	0.86	0.21	57,67,75,76	0
3	MAN	D	4	11/12	0.86	0.37	86,105,113,117	0
2	BMA	C	3	11/12	0.87	0.11	59,76,85,86	0
2	NAG	C	2	14/15	0.89	0.12	39,57,62,73	0
3	FUC	D	5	10/11	0.92	0.17	39,52,56,58	0
3	NAG	D	2	14/15	0.92	0.17	38,46,59,71	0
4	NAG	E	2	14/15	0.92	0.33	58,87,99,110	0
3	NAG	D	1	14/15	0.92	0.11	35,44,52,57	0
3	BMA	D	3	11/12	0.93	0.22	73,88,92,92	0
2	NAG	F	2	14/15	0.94	0.11	43,56,65,68	0
2	NAG	C	1	14/15	0.95	0.09	34,41,47,51	0
2	NAG	F	1	14/15	0.96	0.08	34,39,49,60	0

The following is a graphical depiction of the model fit to experimental electron density for oligosaccharide. Each fit is shown from different orientation to approximate a three-dimensional view.

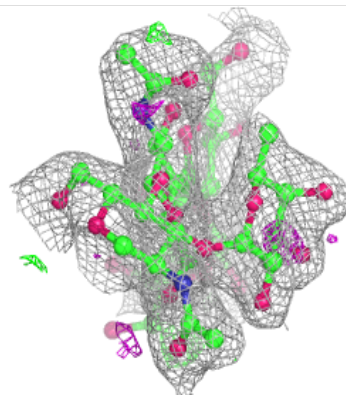
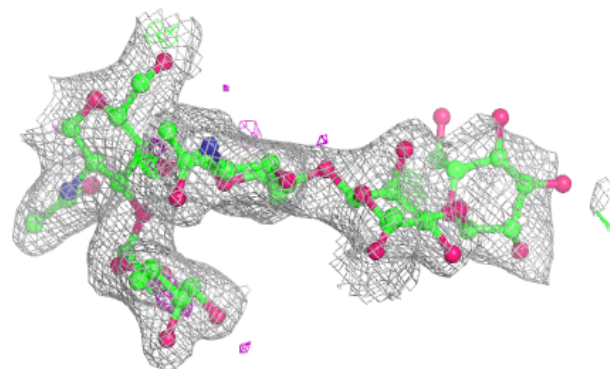
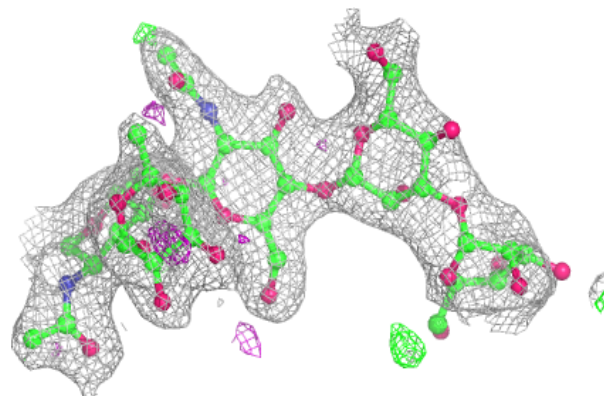


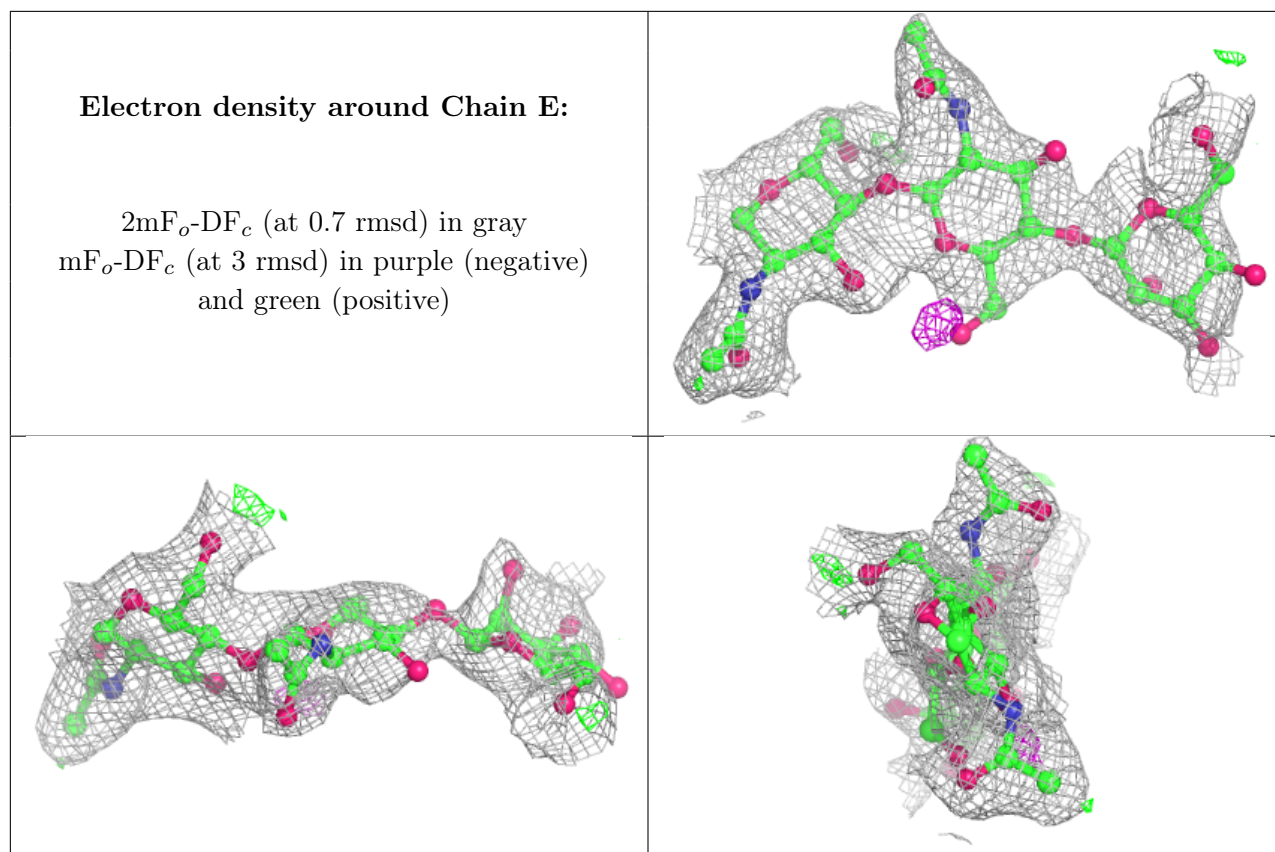
Electron density around Chain F:

$2mF_o-DF_c$ (at 0.7 rmsd) in gray
 mF_o-DF_c (at 3 rmsd) in purple (negative)
and green (positive)

**Electron density around Chain D:**

$2mF_o-DF_c$ (at 0.7 rmsd) in gray
 mF_o-DF_c (at 3 rmsd) in purple (negative)
and green (positive)





6.4 Ligands [i](#)

In the following table, the Atoms column lists the number of modelled atoms in the group and the number defined in the chemical component dictionary. The B-factors column lists the minimum, median, 95th percentile and maximum values of B factors of atoms in the group. The column labelled 'Q < 0.9' lists the number of atoms with occupancy less than 0.9.

Mol	Type	Chain	Res	Atoms	RSCC	RSR	B-factors(\AA^2)	Q<0.9
5	NAG	B	715	14/15	0.71	0.31	64,88,100,103	0
5	NAG	A	639	14/15	0.90	0.16	46,58,64,66	0
6	A2G	A	1000	15/15	0.95	0.07	20,27,39,39	0
6	A2G	B	2000	15/15	0.97	0.12	19,27,35,43	0

6.5 Other polymers [i](#)

There are no such residues in this entry.