



Full wwPDB NMR Structure Validation Report ⓘ

Aug 17, 2022 – 10:24 PM EDT

PDB ID : 2LWI
Title : Solution structure of H-RasT35S mutant protein in complex with Kobe2601
Authors : Araki, M.; Tamura, A.; Shima, F.; Kataoka, T.
Deposited on : 2012-08-01

This is a Full wwPDB NMR Structure Validation Report for a publicly released PDB entry.

We welcome your comments at validation@mail.wwpdb.org

A user guide is available at

<https://www.wwpdb.org/validation/2017/NMRValidationReportHelp>

with specific help available everywhere you see the ⓘ symbol.

The types of validation reports are described at <http://www.wwpdb.org/validation/2017/FAQs#types>.

The following versions of software and data (see [references ⓘ](#)) were used in the production of this report:

MolProbity : 4.02b-467
Mogul : 1.8.5 (274361), CSD as541be (2020)
buster-report : 1.1.7 (2018)
Percentile statistics : 20191225.v01 (using entries in the PDB archive December 25th 2019)
RCI : v_1n_11_5_13_A (Berjanski et al., 2005)
PANAV : Wang et al. (2010)
ShiftChecker : 2.29
Ideal geometry (proteins) : Engh & Huber (2001)
Ideal geometry (DNA, RNA) : Parkinson et al. (1996)
Validation Pipeline (wwPDB-VP) : 2.29

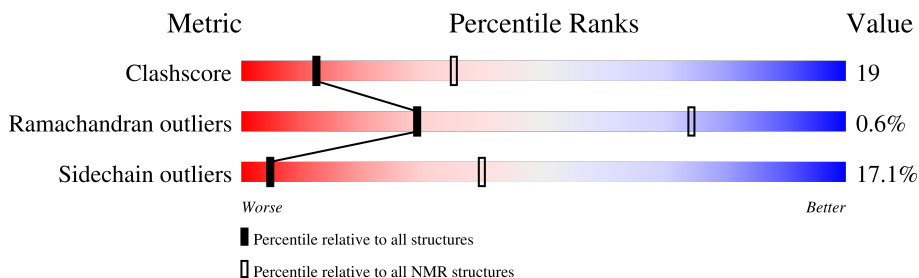
1 Overall quality at a glance

The following experimental techniques were used to determine the structure:

SOLUTION NMR

The overall completeness of chemical shifts assignment is 8%.

Percentile scores (ranging between 0-100) for global validation metrics of the entry are shown in the following graphic. The table shows the number of entries on which the scores are based.



Metric	Whole archive (#Entries)	NMR archive (#Entries)
Clashscore	158937	12864
Ramachandran outliers	154571	11451
Sidechain outliers	154315	11428

The table below summarises the geometric issues observed across the polymeric chains and their fit to the experimental data. The red, orange, yellow and green segments indicate the fraction of residues that contain outliers for ≥ 3 , 2, 1 and 0 types of geometric quality criteria. A cyan segment indicates the fraction of residues that are not part of the well-defined cores, and a grey segment represents the fraction of residues that are not modelled. The numeric value for each fraction is indicated below the corresponding segment, with a dot representing fractions $\leq 5\%$.

Mol	Chain	Length	Quality of chain
1	A	172	

2 Ensemble composition and analysis

This entry contains 15 models. Model 7 is the overall representative, medoid model (most similar to other models). The authors have identified model 1 as representative, based on the following criterion: *lowest energy*.

The following residues are included in the computation of the global validation metrics.

Well-defined (core) protein residues			
Well-defined core	Residue range (total)	Backbone RMSD (Å)	Medoid model
1	A:1-A:25, A:40-A:59, A:67-A:166 (145)	0.32	7

Ill-defined regions of proteins are excluded from the global statistics.

Ligands and non-protein polymers are included in the analysis.

The models can be grouped into 2 clusters and 2 single-model clusters were found.

Cluster number	Models
1	2, 4, 7, 8, 9, 12, 13, 15
2	1, 3, 5, 6, 14
Single-model clusters	10; 11

3 Entry composition [i](#)

There are 5 unique types of molecules in this entry. The entry contains 2706 atoms, of which 1324 are hydrogens and 0 are deuteriums.

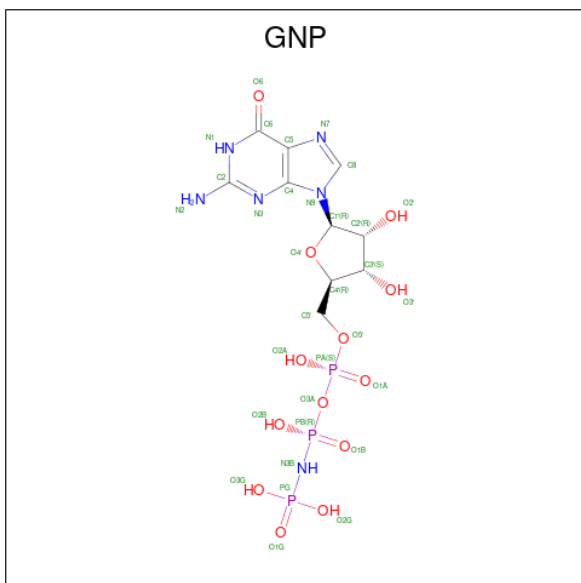
- Molecule 1 is a protein called GTPase HRas.

Mol	Chain	Residues	Atoms					Trace	
			Total	C	H	N	O		S
1	A	166	2617	823	1295	228	264	7	0

There are 7 discrepancies between the modelled and reference sequences:

Chain	Residue	Modelled	Actual	Comment	Reference
A	-5	GLY	-	expression tag	UNP P01112
A	-4	PRO	-	expression tag	UNP P01112
A	-3	LEU	-	expression tag	UNP P01112
A	-2	GLY	-	expression tag	UNP P01112
A	-1	SER	-	expression tag	UNP P01112
A	0	ASP	-	expression tag	UNP P01112
A	35	SER	THR	engineered mutation	UNP P01112

- Molecule 2 is PHOSPHOAMINOPHOSPHONIC ACID-GUANYLATE ESTER (three-letter code: GNP) (formula: $C_{10}H_{17}N_6O_{13}P_3$).

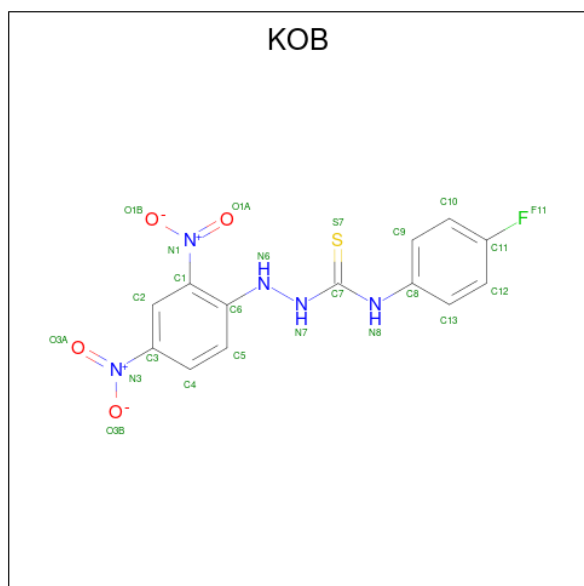


Mol	Chain	Residues	Atoms					
			Total	C	H	N	O	P
2	A	1	45	10	13	6	13	3

- Molecule 3 is MAGNESIUM ION (three-letter code: MG) (formula: Mg).

Mol	Chain	Residues	Atoms	
			Total	Mg
3	A	1	1	1

- Molecule 4 is 2-(2,4-dinitrophenyl)-N-(4-fluorophenyl)hydrazinecarbothioamide (three-letter code: KOB) (formula: C₁₃H₁₀FN₅O₄S).



Mol	Chain	Residues	Atoms						
			Total	C	F	H	N	O	S
4	A	1	34	13	1	10	5	4	1

- Molecule 5 is water.

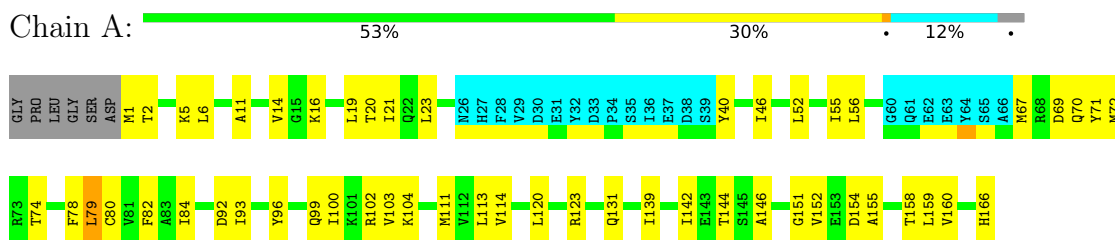
Mol	Chain	Residues	Atoms		
			Total	H	O
5	A	3	9	6	3

4 Residue-property plots

4.1 Average score per residue in the NMR ensemble

These plots are provided for all protein, RNA, DNA and oligosaccharide chains in the entry. The first graphic is the same as shown in the summary in section 1 of this report. The second graphic shows the sequence where residues are colour-coded according to the number of geometric quality criteria for which they contain at least one outlier: green = 0, yellow = 1, orange = 2 and red = 3 or more. Stretches of 2 or more consecutive residues without any outliers are shown as green connectors. Residues which are classified as ill-defined in the NMR ensemble, are shown in cyan with an underline colour-coded according to the previous scheme. Residues which were present in the experimental sample, but not modelled in the final structure are shown in grey.

- Molecule 1: GTPase HRas

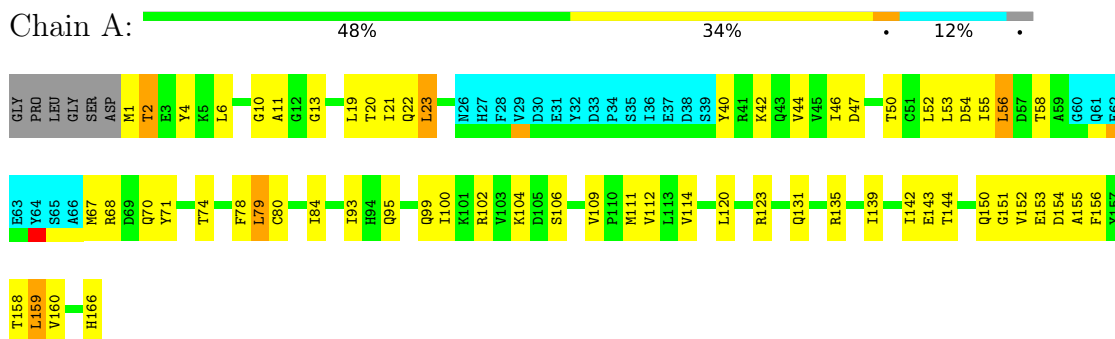


4.2 Scores per residue for each member of the ensemble

Colouring as in section 4.1 above.

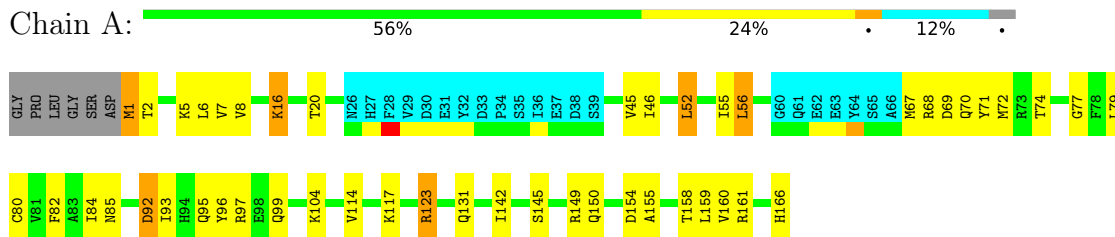
4.2.1 Score per residue for model 1

- Molecule 1: GTPase HRas



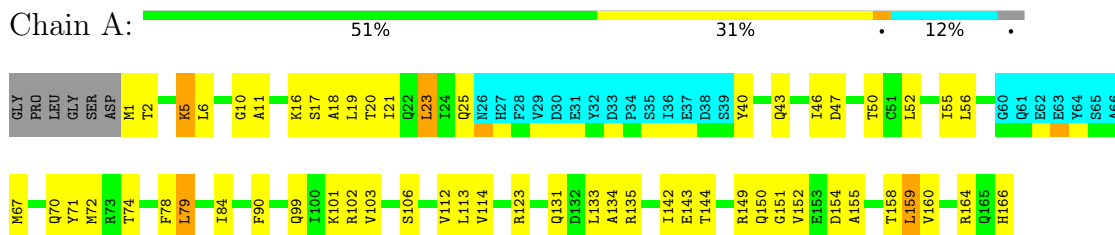
4.2.2 Score per residue for model 2

- Molecule 1: GTPase HRas



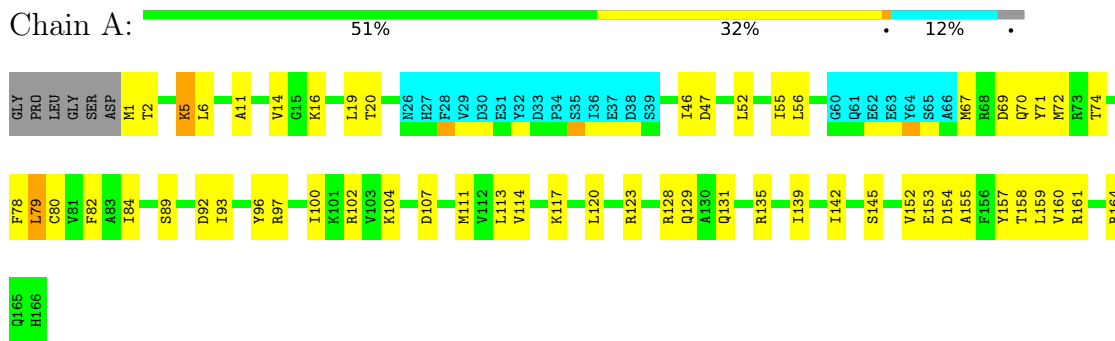
4.2.3 Score per residue for model 3

- Molecule 1: GTPase HRas



4.2.4 Score per residue for model 4

- Molecule 1: GTPase HRas



4.2.5 Score per residue for model 5

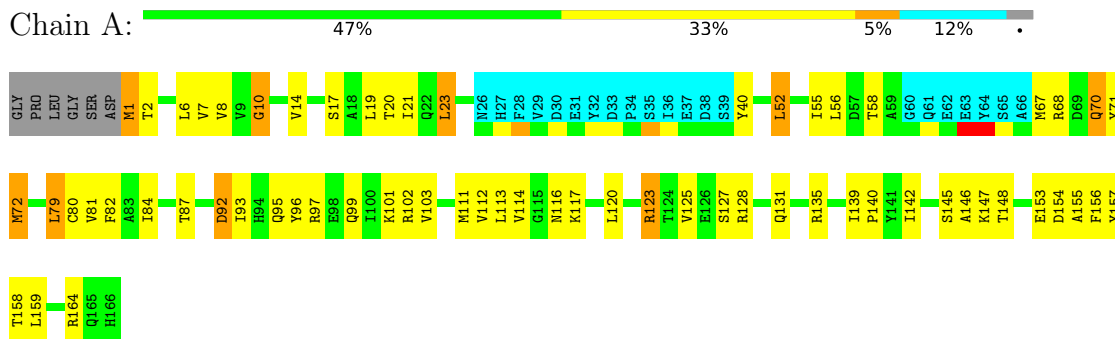
- Molecule 1: GTPase HRas



Q165
H166

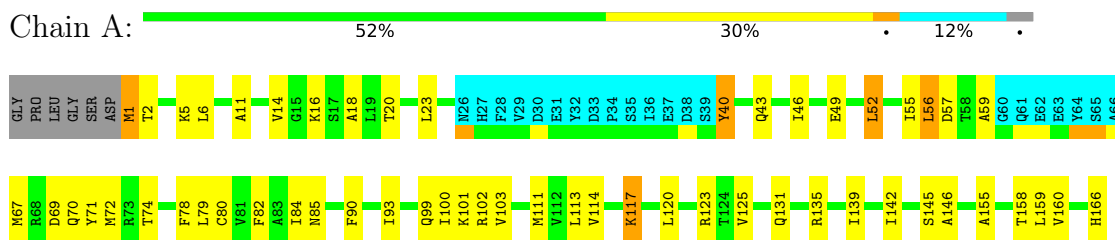
4.2.6 Score per residue for model 6

- Molecule 1: GTPase HRas



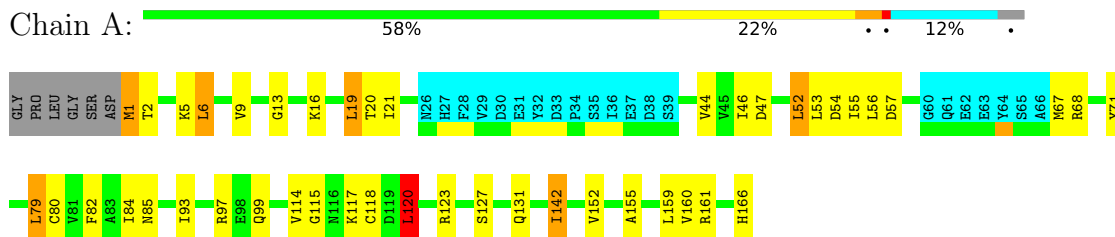
4.2.7 Score per residue for model 7 (medoid)

- Molecule 1: GTPase HRas



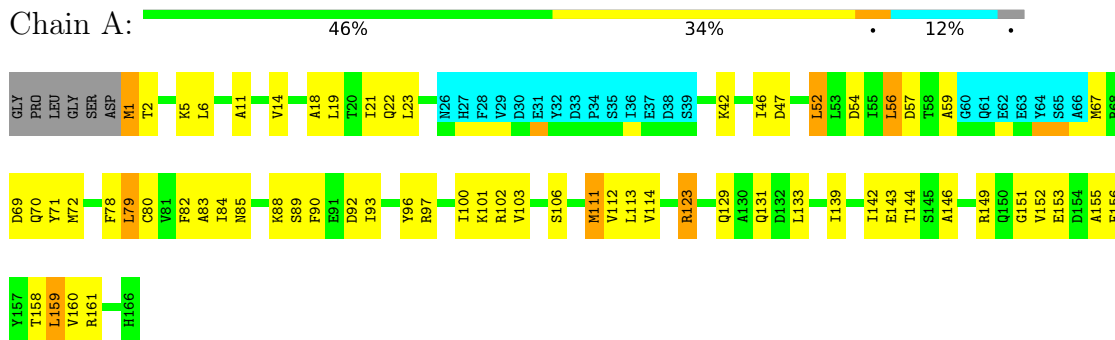
4.2.8 Score per residue for model 8

- Molecule 1: GTPase HRas



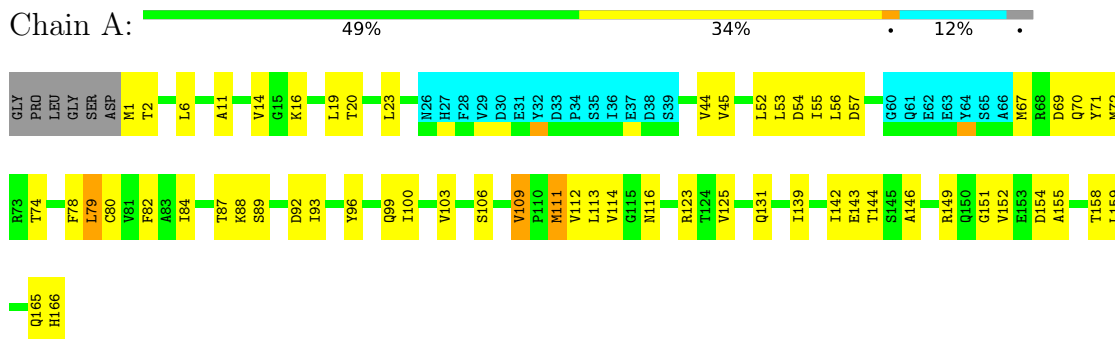
4.2.9 Score per residue for model 9

- Molecule 1: GTPase HRas



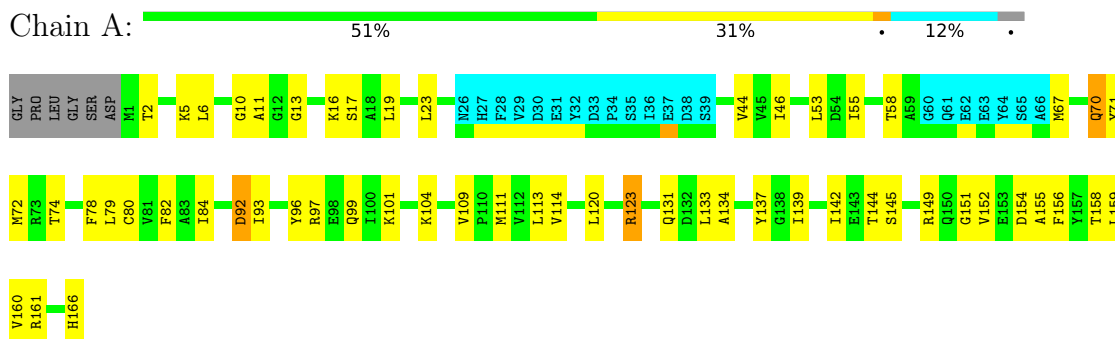
4.2.10 Score per residue for model 10

- Molecule 1: GTPase HRas



4.2.11 Score per residue for model 11

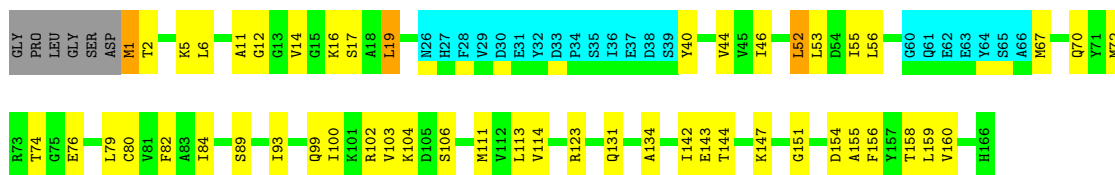
- Molecule 1: GTPase HRas



4.2.12 Score per residue for model 12

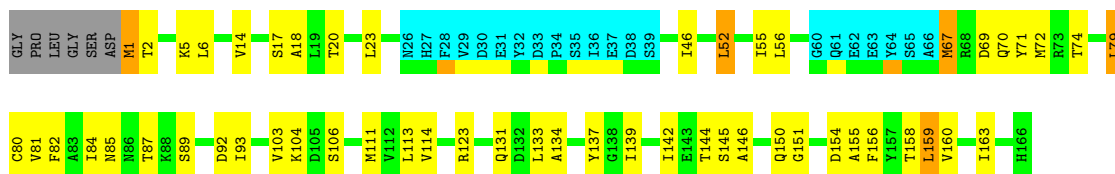
- Molecule 1: GTPase HRas





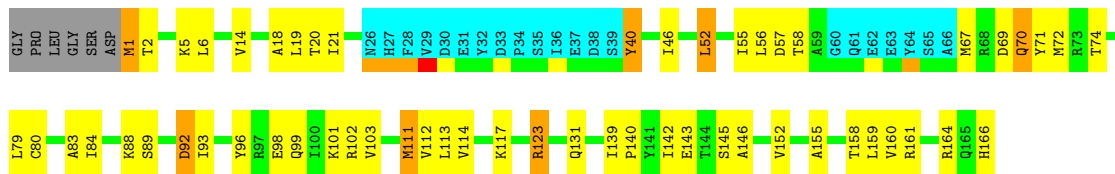
4.2.13 Score per residue for model 13

- Molecule 1: GTPase HRas



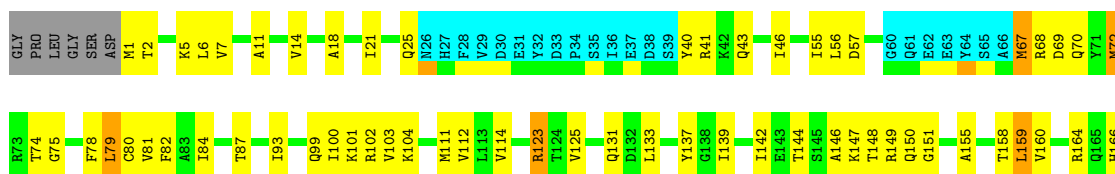
4.2.14 Score per residue for model 14

- Molecule 1: GTPase HRas



4.2.15 Score per residue for model 15

- Molecule 1: GTPase HRas



5 Refinement protocol and experimental data overview

The models were refined using the following method: *simulated annealing*.

Of the 100 calculated structures, 15 were deposited, based on the following criterion: *structures with the lowest energy*.

The following table shows the software used for structure solution, optimisation and refinement.

Software name	Classification	Version
CYANA	structure solution	2.1
CNS	refinement	1.2

The following table shows chemical shift validation statistics as aggregates over all chemical shift files. Detailed validation can be found in section 7 of this report.

Chemical shift file(s)	working_cs.cif
Number of chemical shift lists	1
Total number of shifts	315
Number of shifts mapped to atoms	313
Number of unparsed shifts	0
Number of shifts with mapping errors	0
Number of shifts with mapping warnings	2
Assignment completeness (well-defined parts)	8%

6 Model quality i

6.1 Standard geometry i

Bond lengths and bond angles in the following residue types are not validated in this section: MG, KOB, GNP

There are no covalent bond-length or bond-angle outliers.

There are no bond-length outliers.

There are no bond-angle outliers.

There are no chirality outliers.

There are no planarity outliers.

6.2 Too-close contacts i

In the following table, the Non-H and H(model) columns list the number of non-hydrogen atoms and hydrogen atoms in each chain respectively. The H(added) column lists the number of hydrogen atoms added and optimized by MolProbity. The Clashes column lists the number of clashes averaged over the ensemble.

Mol	Chain	Non-H	H(model)	H(added)	Clashes
1	A	1151	1160	1159	39±6
2	A	32	13	13	2±2
4	A	24	10	10	12±4
5	A	3	6	0	0±0
All	All	18165	17835	17730	681

The all-atom clashscore is defined as the number of clashes found per 1000 atoms (including hydrogen atoms). The all-atom clashscore for this structure is 19.

All unique clashes are listed below, sorted by their clash magnitude.

Atom-1	Atom-2	Clash(Å)	Distance(Å)	Models	
				Worst	Total
4:A:203:KOB:HD2	4:A:203:KOB:S7	1.34	1.60	13	8
4:A:203:KOB:S7	4:A:203:KOB:HD1	1.32	1.62	1	7
4:A:203:KOB:O1B	4:A:203:KOB:N7	1.25	1.67	10	1
4:A:203:KOB:N7	4:A:203:KOB:O1A	1.22	1.73	14	2
4:A:203:KOB:S7	4:A:203:KOB:C13	1.01	2.47	12	8
4:A:203:KOB:S7	4:A:203:KOB:C9	1.00	2.48	9	7
1:A:142:ILE:HD11	1:A:158:THR:HG21	0.95	1.38	5	14
1:A:56:LEU:HD21	1:A:71:TYR:CD1	0.92	2.00	10	4
1:A:6:LEU:HD13	1:A:159:LEU:HD23	0.91	1.43	12	2

Continued on next page...

Continued from previous page...

Atom-1	Atom-2	Clash(Å)	Distance(Å)	Models	
				Worst	Total
4:A:203:KOB:O1A	4:A:203:KOB:C7	0.89	2.20	14	2
1:A:79:LEU:HD12	1:A:159:LEU:HD23	0.88	1.44	1	4
4:A:203:KOB:O1B	4:A:203:KOB:C7	0.86	2.23	10	1
1:A:71:TYR:CE1	4:A:203:KOB:HD1	0.85	2.05	8	3
2:A:201:GNP:H3'	2:A:201:GNP:O2A	0.84	1.70	6	1
1:A:56:LEU:HD21	1:A:71:TYR:CE1	0.84	2.07	4	3
1:A:70:GLN:O	1:A:74:THR:HG23	0.81	1.75	12	11
1:A:71:TYR:CD1	4:A:203:KOB:S7	0.81	2.74	4	2
1:A:19:LEU:HD22	1:A:152:VAL:HG13	0.81	1.52	4	6
1:A:56:LEU:HD11	1:A:71:TYR:CE1	0.80	2.11	2	2
1:A:146:ALA:HB3	2:A:201:GNP:O6	0.80	1.76	14	1
1:A:67:MET:CE	4:A:203:KOB:H4	0.79	2.08	7	1
1:A:56:LEU:CD1	4:A:203:KOB:HE2	0.78	2.08	9	1
1:A:56:LEU:HD11	1:A:71:TYR:CD1	0.77	2.15	4	5
1:A:71:TYR:CD1	4:A:203:KOB:HD1	0.77	2.14	3	2
1:A:84:ILE:HD12	1:A:123:ARG:HB3	0.77	1.57	10	9
1:A:20:THR:HG23	1:A:55:ILE:HG21	0.77	1.57	6	10
1:A:67:MET:HG3	4:A:203:KOB:N7	0.77	1.95	13	1
1:A:46:ILE:CD1	1:A:160:VAL:HG21	0.74	2.11	9	13
1:A:70:GLN:NE2	4:A:203:KOB:H5	0.72	2.00	1	1
1:A:72:MET:HB2	1:A:103:VAL:HG11	0.71	1.62	6	10
1:A:11:ALA:O	1:A:14:VAL:HG22	0.71	1.83	10	5
1:A:79:LEU:HD21	1:A:114:VAL:HG21	0.71	1.63	13	3
1:A:84:ILE:HD12	1:A:123:ARG:HB2	0.70	1.63	3	8
2:A:201:GNP:O2A	2:A:201:GNP:C3'	0.70	2.38	6	1
1:A:114:VAL:HG22	1:A:155:ALA:HB1	0.70	1.63	13	8
1:A:67:MET:HA	4:A:203:KOB:HAC	0.70	1.46	13	1
1:A:84:ILE:HD12	1:A:123:ARG:CB	0.69	2.16	13	9
1:A:114:VAL:HG21	1:A:155:ALA:HB1	0.69	1.63	5	8
1:A:67:MET:HE3	4:A:203:KOB:N6	0.69	2.02	4	1
4:A:203:KOB:N8	4:A:203:KOB:C5	0.69	2.56	15	2
1:A:72:MET:CB	1:A:103:VAL:HG11	0.68	2.18	6	2
1:A:79:LEU:HD12	1:A:159:LEU:HD22	0.68	1.64	6	3
1:A:142:ILE:HD12	1:A:155:ALA:HA	0.68	1.64	8	1
1:A:18:ALA:HB1	1:A:146:ALA:CB	0.67	2.20	13	1
1:A:1:MET:HG3	1:A:52:LEU:HD23	0.67	1.67	13	8
1:A:70:GLN:HG2	4:A:203:KOB:H5	0.67	1.67	6	2
1:A:67:MET:HE3	4:A:203:KOB:C4	0.67	2.18	7	2
4:A:203:KOB:H5	4:A:203:KOB:C7	0.67	2.20	15	3
1:A:67:MET:HE3	4:A:203:KOB:H4	0.67	1.64	7	1
1:A:113:LEU:HD23	1:A:134:ALA:HB2	0.66	1.67	3	5

Continued on next page...

Continued from previous page...

Atom-1	Atom-2	Clash(Å)	Distance(Å)	Models	
				Worst	Total
1:A:80:CYS:HB3	1:A:93:ILE:HD12	0.66	1.66	14	14
1:A:19:LEU:CD2	1:A:152:VAL:HG13	0.66	2.21	1	4
4:A:203:KOB:C7	4:A:203:KOB:N1	0.66	2.59	7	2
1:A:23:LEU:HD12	1:A:153:GLU:HA	0.65	1.67	9	2
1:A:20:THR:HG23	1:A:55:ILE:CG2	0.65	2.21	6	7
1:A:71:TYR:CE1	4:A:203:KOB:S7	0.65	2.90	13	3
1:A:82:PHE:CD1	1:A:113:LEU:HD11	0.65	2.27	10	4
1:A:6:LEU:CD1	1:A:159:LEU:HD23	0.65	2.20	12	2
1:A:8:VAL:HG12	1:A:56:LEU:O	0.64	1.91	6	1
1:A:70:GLN:OE1	1:A:74:THR:HG21	0.64	1.92	14	1
1:A:71:TYR:CD1	4:A:203:KOB:C9	0.64	2.81	2	1
1:A:114:VAL:CG2	1:A:155:ALA:HB1	0.64	2.21	13	15
1:A:46:ILE:HD13	1:A:160:VAL:HG21	0.63	1.69	15	8
1:A:133:LEU:HD21	1:A:137:TYR:CZ	0.63	2.29	11	2
2:A:201:GNP:N3B	2:A:201:GNP:O1A	0.63	2.31	13	2
1:A:6:LEU:HD12	1:A:55:ILE:CD1	0.63	2.23	5	7
1:A:79:LEU:CD1	1:A:159:LEU:HD22	0.63	2.22	8	2
1:A:79:LEU:HD12	1:A:159:LEU:CD2	0.62	2.22	15	3
1:A:67:MET:HE2	4:A:203:KOB:N6	0.62	2.09	2	2
1:A:74:THR:HG21	4:A:203:KOB:S7	0.62	2.35	15	1
2:A:201:GNP:N3B	5:A:302:HOH:O	0.62	2.33	3	1
1:A:1:MET:SD	1:A:50:THR:HG22	0.61	2.35	1	2
1:A:71:TYR:CE1	4:A:203:KOB:C9	0.61	2.84	2	4
1:A:142:ILE:HD11	1:A:158:THR:CG2	0.61	2.22	5	1
1:A:6:LEU:HD22	1:A:159:LEU:HD13	0.61	1.73	13	2
1:A:80:CYS:HB3	1:A:93:ILE:HG23	0.60	1.73	11	1
1:A:6:LEU:HB2	1:A:55:ILE:HD13	0.60	1.72	10	3
1:A:74:THR:CB	4:A:203:KOB:HE1	0.60	2.26	4	1
1:A:11:ALA:HB3	1:A:14:VAL:CG1	0.60	2.27	5	2
1:A:9:VAL:O	1:A:81:VAL:HG12	0.60	1.97	5	1
1:A:78:PHE:CE2	1:A:100:ILE:HG23	0.59	2.32	10	2
1:A:11:ALA:HB3	1:A:14:VAL:HG13	0.59	1.75	5	3
1:A:14:VAL:HG12	1:A:89:SER:CB	0.59	2.27	12	2
1:A:70:GLN:HB3	4:A:203:KOB:S7	0.59	2.38	6	2
4:A:203:KOB:C5	4:A:203:KOB:C7	0.59	2.74	15	1
1:A:44:VAL:HG21	1:A:53:LEU:HD11	0.59	1.73	10	4
1:A:70:GLN:OE1	4:A:203:KOB:HD1	0.59	1.98	14	1
1:A:104:LYS:HG3	1:A:109:VAL:HG11	0.59	1.74	11	1
1:A:22:GLN:CB	1:A:152:VAL:HG11	0.58	2.28	1	2
1:A:46:ILE:HD12	1:A:160:VAL:HG21	0.58	1.74	1	3
1:A:5:LYS:HE3	4:A:203:KOB:HE2	0.58	1.76	5	1

Continued on next page...

Continued from previous page...

Atom-1	Atom-2	Clash(Å)	Distance(Å)	Models	
				Worst	Total
1:A:56:LEU:HD13	1:A:56:LEU:O	0.58	1.99	4	4
1:A:19:LEU:HD23	1:A:152:VAL:HG13	0.58	1.75	8	3
1:A:111:MET:HG2	1:A:139:ILE:HG21	0.58	1.73	10	3
2:A:201:GNP:H2'	2:A:201:GNP:O5'	0.58	1.98	12	1
1:A:21:ILE:HD11	1:A:40:TYR:OH	0.57	1.98	6	4
1:A:109:VAL:HG23	1:A:111:MET:SD	0.57	2.38	10	1
1:A:23:LEU:HD13	1:A:156:PHE:CB	0.57	2.30	1	2
1:A:67:MET:CE	4:A:203:KOB:N6	0.57	2.67	6	3
1:A:23:LEU:HD13	1:A:156:PHE:CD2	0.57	2.34	6	2
1:A:81:VAL:O	1:A:93:ILE:HD11	0.57	2.00	15	2
1:A:74:THR:HB	4:A:203:KOB:HE1	0.57	1.77	4	1
1:A:67:MET:HB3	4:A:203:KOB:O3A	0.57	1.99	12	1
1:A:70:GLN:CB	4:A:203:KOB:S7	0.56	2.93	6	1
1:A:67:MET:CE	4:A:203:KOB:O3A	0.56	2.53	7	1
1:A:56:LEU:HD21	1:A:71:TYR:CG	0.56	2.36	13	1
1:A:6:LEU:N	1:A:6:LEU:HD22	0.56	2.16	10	3
1:A:67:MET:CE	4:A:203:KOB:C4	0.56	2.83	14	1
1:A:111:MET:HG3	1:A:139:ILE:HG21	0.56	1.76	7	7
1:A:67:MET:O	4:A:203:KOB:S7	0.55	2.64	13	2
1:A:45:VAL:HG13	1:A:45:VAL:O	0.55	2.01	10	2
4:A:203:KOB:C7	4:A:203:KOB:C5	0.55	2.81	5	3
1:A:79:LEU:HD21	1:A:114:VAL:CG2	0.55	2.31	13	2
1:A:71:TYR:CE1	4:A:203:KOB:C13	0.55	2.90	13	2
1:A:18:ALA:HB1	1:A:146:ALA:HB1	0.55	1.77	7	5
1:A:133:LEU:HD11	1:A:137:TYR:CE1	0.55	2.37	5	1
1:A:23:LEU:HD13	1:A:156:PHE:HB2	0.55	1.79	1	1
1:A:90:PHE:CD2	1:A:125:VAL:HG11	0.54	2.37	7	1
2:A:201:GNP:O1B	2:A:201:GNP:H5'2	0.54	2.02	13	1
1:A:82:PHE:CE1	1:A:113:LEU:HD11	0.54	2.38	11	2
1:A:70:GLN:HG3	4:A:203:KOB:S7	0.54	2.42	4	1
1:A:133:LEU:HD21	1:A:137:TYR:CE2	0.54	2.37	13	1
1:A:79:LEU:HD12	1:A:159:LEU:HD12	0.54	1.80	4	1
1:A:78:PHE:CE1	1:A:100:ILE:HG23	0.54	2.37	4	4
4:A:203:KOB:N6	4:A:203:KOB:O1B	0.54	2.37	6	5
1:A:70:GLN:HG2	4:A:203:KOB:N8	0.53	2.18	2	1
1:A:6:LEU:HD12	1:A:55:ILE:HD13	0.53	1.79	15	2
1:A:133:LEU:HD21	1:A:137:TYR:CE1	0.53	2.38	11	1
1:A:67:MET:SD	4:A:203:KOB:N7	0.53	2.81	6	2
1:A:19:LEU:HD22	1:A:152:VAL:CG1	0.53	2.31	4	1
1:A:67:MET:CB	4:A:203:KOB:O3A	0.53	2.57	12	1
1:A:74:THR:CG2	4:A:203:KOB:S7	0.53	2.97	15	1

Continued on next page...

Continued from previous page...

Atom-1	Atom-2	Clash(Å)	Distance(Å)	Models	
				Worst	Total
1:A:80:CYS:O	1:A:113:LEU:HD12	0.53	2.04	14	4
1:A:23:LEU:HD22	1:A:156:PHE:CG	0.53	2.39	11	1
1:A:144:THR:HG22	1:A:151:GLY:O	0.52	2.03	11	9
1:A:19:LEU:HD12	1:A:156:PHE:CZ	0.52	2.39	12	1
1:A:56:LEU:HD13	1:A:56:LEU:C	0.52	2.24	4	2
1:A:56:LEU:HD12	1:A:57:ASP:N	0.52	2.20	10	1
1:A:159:LEU:HD22	1:A:163:ILE:HD11	0.52	1.81	13	1
1:A:56:LEU:C	1:A:56:LEU:HD13	0.52	2.25	14	2
1:A:71:TYR:CE1	4:A:203:KOB:H5	0.52	2.40	5	1
4:A:203:KOB:O1B	4:A:203:KOB:N6	0.52	2.36	5	5
1:A:67:MET:HE2	4:A:203:KOB:H4	0.52	1.81	7	2
2:A:201:GNP:O1G	5:A:301:HOH:O	0.52	2.22	10	2
4:A:203:KOB:C6	4:A:203:KOB:HAD	0.52	2.18	15	4
4:A:203:KOB:O1A	4:A:203:KOB:N6	0.52	2.38	13	2
1:A:7:VAL:HG11	1:A:71:TYR:O	0.52	2.05	2	1
1:A:100:ILE:HG21	1:A:111:MET:CE	0.52	2.35	12	1
1:A:14:VAL:HG12	1:A:89:SER:HB2	0.51	1.81	12	2
1:A:7:VAL:HG21	1:A:71:TYR:O	0.51	2.06	6	1
1:A:87:THR:HG23	1:A:125:VAL:HG22	0.51	1.81	10	3
1:A:72:MET:SD	1:A:103:VAL:HG21	0.51	2.45	9	1
1:A:6:LEU:HD22	1:A:159:LEU:CD2	0.51	2.35	11	4
1:A:67:MET:HE2	4:A:203:KOB:C6	0.51	2.36	2	1
1:A:71:TYR:CE1	4:A:203:KOB:C8	0.51	2.94	2	1
4:A:203:KOB:N8	4:A:203:KOB:C6	0.51	2.71	15	2
1:A:46:ILE:CD1	1:A:160:VAL:HG11	0.51	2.36	7	1
1:A:5:LYS:HE3	4:A:203:KOB:HE1	0.51	1.83	3	2
4:A:203:KOB:C7	4:A:203:KOB:C1	0.51	2.86	7	2
2:A:201:GNP:O5'	2:A:201:GNP:C2'	0.51	2.58	12	1
1:A:67:MET:HE3	4:A:203:KOB:N7	0.51	2.21	4	1
1:A:67:MET:HB3	4:A:203:KOB:HAB	0.51	1.65	10	1
1:A:70:GLN:HG2	4:A:203:KOB:N6	0.50	2.21	7	1
1:A:55:ILE:HD12	1:A:55:ILE:N	0.50	2.22	13	1
1:A:71:TYR:CZ	4:A:203:KOB:HD2	0.50	2.42	9	1
1:A:90:PHE:CE1	1:A:133:LEU:HD22	0.50	2.42	9	2
4:A:203:KOB:S7	4:A:203:KOB:C6	0.50	2.99	8	3
1:A:6:LEU:HD22	1:A:159:LEU:CD1	0.49	2.37	3	1
1:A:71:TYR:CZ	4:A:203:KOB:S7	0.49	3.05	6	2
1:A:67:MET:HG2	4:A:203:KOB:O3B	0.49	2.07	9	1
1:A:7:VAL:HG23	1:A:75:GLY:HA3	0.49	1.84	15	1
1:A:79:LEU:CD1	1:A:159:LEU:HD12	0.49	2.37	4	1
1:A:22:GLN:HB2	1:A:152:VAL:HG11	0.49	1.82	9	1

Continued on next page...

Continued from previous page...

Atom-1	Atom-2	Clash(Å)	Distance(Å)	Models	
				Worst	Total
1:A:70:GLN:OE1	1:A:74:THR:CG2	0.49	2.60	14	1
1:A:19:LEU:HD23	1:A:116:ASN:ND2	0.49	2.22	6	1
1:A:58:THR:HG22	1:A:71:TYR:CE2	0.49	2.42	14	1
1:A:6:LEU:HD22	1:A:159:LEU:HD12	0.49	1.83	3	2
2:A:201:GNP:O3A	2:A:201:GNP:O1G	0.49	2.30	1	2
4:A:203:KOB:N7	4:A:203:KOB:N1	0.49	2.48	10	1
1:A:100:ILE:HG21	1:A:111:MET:HE2	0.49	1.85	12	1
1:A:70:GLN:CB	4:A:203:KOB:O3B	0.49	2.60	5	1
4:A:203:KOB:S7	4:A:203:KOB:C5	0.48	3.01	8	1
1:A:133:LEU:C	1:A:133:LEU:HD13	0.48	2.29	13	2
1:A:112:VAL:HG11	1:A:142:ILE:CD1	0.48	2.38	10	1
1:A:19:LEU:HD22	1:A:152:VAL:HG12	0.48	1.84	14	1
1:A:6:LEU:HD12	1:A:159:LEU:HD23	0.48	1.85	10	2
1:A:83:ALA:HB1	1:A:117:LYS:CD	0.48	2.38	14	1
1:A:11:ALA:O	1:A:14:VAL:HG13	0.48	2.09	4	1
1:A:71:TYR:CG	4:A:203:KOB:S7	0.48	3.07	4	1
1:A:56:LEU:HD21	1:A:71:TYR:HE1	0.48	1.59	4	1
1:A:120:LEU:HD21	2:A:201:GNP:N2	0.48	2.24	11	2
1:A:19:LEU:HD21	1:A:81:VAL:HG11	0.48	1.86	6	1
1:A:70:GLN:CD	4:A:203:KOB:H5	0.47	2.28	1	1
1:A:67:MET:SD	4:A:203:KOB:N6	0.47	2.87	8	2
1:A:46:ILE:HG21	1:A:160:VAL:HG11	0.47	1.85	12	1
1:A:70:GLN:NE2	4:A:203:KOB:N8	0.47	2.62	14	1
2:A:201:GNP:O1G	5:A:302:HOH:O	0.47	2.24	14	1
1:A:56:LEU:HD22	1:A:58:THR:CG2	0.47	2.39	6	1
4:A:203:KOB:C6	4:A:203:KOB:N8	0.47	2.73	7	2
1:A:74:THR:HG21	4:A:203:KOB:C13	0.47	2.40	7	1
2:A:201:GNP:O1B	2:A:201:GNP:C5'	0.47	2.62	13	1
1:A:112:VAL:HG23	1:A:159:LEU:HD22	0.47	1.87	1	3
1:A:67:MET:CE	4:A:203:KOB:C6	0.47	2.93	2	2
4:A:203:KOB:C1	4:A:203:KOB:N8	0.47	2.78	7	1
1:A:120:LEU:H	1:A:120:LEU:HD13	0.47	1.69	8	1
1:A:58:THR:CG2	1:A:71:TYR:CD2	0.47	2.98	11	3
1:A:70:GLN:CG	4:A:203:KOB:HAD	0.46	2.23	2	1
1:A:145:SER:HB3	1:A:148:THR:HG22	0.46	1.86	6	1
1:A:70:GLN:OE1	4:A:203:KOB:C9	0.46	2.63	14	1
1:A:67:MET:HE2	4:A:203:KOB:C4	0.46	2.41	14	1
1:A:78:PHE:N	1:A:78:PHE:CD1	0.46	2.83	11	2
1:A:43:GLN:HG3	1:A:52:LEU:HD22	0.46	1.88	7	1
2:A:201:GNP:O1G	2:A:201:GNP:O2B	0.46	2.34	13	1
1:A:67:MET:CE	4:A:203:KOB:C3	0.46	2.93	15	2

Continued on next page...

Continued from previous page...

Atom-1	Atom-2	Clash(Å)	Distance(Å)	Models	
				Worst	Total
1:A:71:TYR:OH	4:A:203:KOB:O3B	0.46	2.24	14	1
1:A:71:TYR:CE1	4:A:203:KOB:HD2	0.46	2.46	9	2
1:A:100:ILE:HD13	1:A:111:MET:HE3	0.46	1.87	9	1
2:A:201:GNP:O1A	2:A:201:GNP:PG	0.46	2.74	14	1
1:A:67:MET:HE1	4:A:203:KOB:C1	0.45	2.41	2	1
1:A:70:GLN:HG2	4:A:203:KOB:HAD	0.45	1.70	2	1
1:A:84:ILE:HD11	1:A:117:LYS:O	0.45	2.11	7	4
1:A:2:THR:CG2	1:A:4:TYR:CE2	0.45	2.99	1	1
1:A:14:VAL:HG12	1:A:89:SER:HB3	0.45	1.87	9	2
1:A:73:ARG:HG2	1:A:103:VAL:HG13	0.45	1.87	5	1
1:A:56:LEU:HD11	1:A:71:TYR:HD1	0.45	1.69	6	1
2:A:201:GNP:O3G	2:A:201:GNP:O1B	0.45	2.34	8	2
1:A:20:THR:CG2	1:A:55:ILE:HG21	0.45	2.40	14	1
1:A:46:ILE:HD12	1:A:160:VAL:HG11	0.45	1.87	1	2
1:A:133:LEU:CD2	1:A:137:TYR:CE1	0.45	2.99	11	1
1:A:133:LEU:HD11	1:A:137:TYR:OH	0.45	2.11	15	1
1:A:44:VAL:CG2	1:A:53:LEU:HD11	0.45	2.42	10	1
1:A:67:MET:HE2	4:A:203:KOB:N3	0.45	2.27	15	1
1:A:100:ILE:CG2	1:A:109:VAL:HG21	0.45	2.42	1	1
1:A:78:PHE:CZ	1:A:104:LYS:HE2	0.45	2.47	11	1
1:A:79:LEU:HD12	1:A:159:LEU:CD1	0.44	2.41	4	1
1:A:56:LEU:HD22	1:A:58:THR:HG22	0.44	1.88	6	1
1:A:44:VAL:HG21	1:A:53:LEU:CD1	0.44	2.42	1	1
1:A:117:LYS:HE2	1:A:120:LEU:HD11	0.44	1.89	8	1
1:A:83:ALA:HB1	1:A:117:LYS:HD3	0.44	1.90	14	1
1:A:7:VAL:HG12	1:A:56:LEU:HD22	0.44	1.88	2	1
1:A:83:ALA:HB1	1:A:85:ASN:OD1	0.44	2.13	9	1
1:A:93:ILE:HG21	1:A:113:LEU:HD22	0.44	1.89	9	1
1:A:67:MET:CE	4:A:203:KOB:C2	0.44	2.95	1	1
1:A:133:LEU:CD1	1:A:137:TYR:CE1	0.44	3.00	5	1
1:A:159:LEU:HD13	1:A:159:LEU:O	0.44	2.13	15	1
1:A:67:MET:HE3	4:A:203:KOB:C6	0.44	2.41	4	1
1:A:67:MET:HE1	4:A:203:KOB:O3A	0.44	2.12	7	1
1:A:20:THR:HG23	1:A:55:ILE:CB	0.43	2.42	8	1
1:A:87:THR:HG23	1:A:125:VAL:CG2	0.43	2.43	10	1
1:A:70:GLN:HG2	4:A:203:KOB:S7	0.43	2.53	15	1
1:A:112:VAL:HG13	1:A:140:PRO:HG2	0.43	1.89	14	2
1:A:142:ILE:CD1	1:A:158:THR:HG21	0.43	2.38	7	1
1:A:133:LEU:HD13	1:A:134:ALA:N	0.43	2.28	13	1
1:A:8:VAL:HG12	1:A:16:LYS:HB2	0.43	1.88	2	1
1:A:21:ILE:CD1	1:A:40:TYR:CZ	0.43	3.00	6	1

Continued on next page...

Continued from previous page...

Atom-1	Atom-2	Clash(Å)	Distance(Å)	Models	
				Worst	Total
1:A:67:MET:HG3	4:A:203:KOB:N6	0.43	2.27	13	1
1:A:56:LEU:HD23	1:A:57:ASP:N	0.43	2.28	15	1
1:A:67:MET:O	1:A:71:TYR:CD2	0.43	2.72	1	2
4:A:203:KOB:C7	4:A:203:KOB:H5	0.43	2.44	3	2
1:A:71:TYR:CD1	4:A:203:KOB:HE1	0.43	2.49	6	1
1:A:18:ALA:CB	1:A:146:ALA:HB1	0.43	2.44	14	2
1:A:20:THR:HG21	1:A:57:ASP:HB2	0.43	1.88	7	1
1:A:58:THR:HG21	1:A:71:TYR:CD2	0.43	2.48	11	1
1:A:13:GLY:HA2	2:A:201:GNP:O1A	0.43	2.14	1	1
1:A:142:ILE:HG22	1:A:143:GLU:N	0.43	2.29	12	4
1:A:7:VAL:HG22	1:A:77:GLY:O	0.43	2.14	2	1
1:A:116:ASN:HD21	1:A:146:ALA:HB2	0.42	1.73	6	2
1:A:58:THR:HG22	1:A:71:TYR:CD2	0.42	2.50	5	1
1:A:79:LEU:CD1	1:A:159:LEU:HD23	0.42	2.35	9	1
1:A:100:ILE:HD13	1:A:111:MET:CE	0.42	2.44	9	1
1:A:23:LEU:O	1:A:23:LEU:HD13	0.42	2.14	3	1
1:A:70:GLN:HG3	1:A:71:TYR:N	0.42	2.28	14	1
1:A:71:TYR:HE1	4:A:203:KOB:C8	0.42	2.27	10	1
1:A:12:GLY:O	2:A:201:GNP:O2G	0.42	2.37	12	1
1:A:23:LEU:C	1:A:23:LEU:HD13	0.42	2.34	7	1
1:A:67:MET:O	1:A:70:GLN:HB3	0.42	2.14	10	1
1:A:113:LEU:HD12	1:A:114:VAL:N	0.42	2.29	14	1
2:A:201:GNP:O2A	2:A:201:GNP:C2'	0.42	2.68	6	1
1:A:67:MET:HG3	4:A:203:KOB:HAC	0.42	1.71	13	1
1:A:133:LEU:HD22	1:A:133:LEU:O	0.42	2.14	13	2
1:A:6:LEU:HD22	1:A:6:LEU:H	0.42	1.75	8	1
1:A:9:VAL:HG22	1:A:79:LEU:O	0.42	2.15	5	2
1:A:6:LEU:HD23	1:A:55:ILE:HD13	0.42	1.91	8	1
4:A:203:KOB:N8	4:A:203:KOB:C1	0.42	2.83	14	1
1:A:56:LEU:HD21	1:A:58:THR:CG2	0.41	2.45	1	1
1:A:55:ILE:N	1:A:55:ILE:CD1	0.41	2.82	13	1
1:A:67:MET:HB3	1:A:71:TYR:CE2	0.41	2.50	1	1
1:A:92:ASP:O	1:A:96:TYR:CD2	0.41	2.74	11	8
1:A:74:THR:HG21	4:A:203:KOB:C8	0.41	2.45	7	1
4:A:203:KOB:O1B	4:A:203:KOB:S7	0.41	2.78	10	1
1:A:67:MET:HE1	4:A:203:KOB:N1	0.41	2.29	2	1
1:A:120:LEU:HD21	2:A:201:GNP:HN21	0.41	1.75	4	1
1:A:96:TYR:O	1:A:100:ILE:HD12	0.41	2.15	5	1
1:A:100:ILE:HD12	1:A:111:MET:HE1	0.41	1.91	7	1
1:A:6:LEU:CB	1:A:55:ILE:HD13	0.41	2.44	10	1
1:A:70:GLN:CG	4:A:203:KOB:S7	0.41	3.07	4	1

Continued on next page...

Continued from previous page...

Atom-1	Atom-2	Clash(Å)	Distance(Å)	Models	
				Worst	Total
1:A:70:GLN:OE1	4:A:203:KOB:O3A	0.41	2.38	9	1
1:A:44:VAL:CG2	1:A:53:LEU:CD1	0.41	2.99	8	1
1:A:71:TYR:HA	1:A:74:THR:OG1	0.41	2.15	3	1
1:A:6:LEU:HD22	1:A:159:LEU:HD23	0.41	1.91	14	2
1:A:120:LEU:N	1:A:120:LEU:HD22	0.41	2.30	8	1
1:A:70:GLN:O	1:A:74:THR:N	0.41	2.51	2	1
1:A:10:GLY:O	1:A:96:TYR:CE2	0.41	2.73	5	1
1:A:104:LYS:CG	1:A:109:VAL:HG11	0.41	2.44	11	1
1:A:13:GLY:CA	2:A:201:GNP:O1A	0.41	2.69	1	1
1:A:153:GLU:O	1:A:157:TYR:CD2	0.41	2.74	6	2
1:A:78:PHE:CZ	1:A:104:LYS:CE	0.41	3.03	11	1
1:A:21:ILE:CD1	1:A:40:TYR:CE1	0.40	3.03	1	1
1:A:67:MET:N	1:A:67:MET:SD	0.40	2.94	13	1
1:A:10:GLY:O	1:A:14:VAL:CG2	0.40	2.70	6	1
1:A:112:VAL:HG12	1:A:113:LEU:N	0.40	2.31	3	1
1:A:114:VAL:HG12	1:A:115:GLY:N	0.40	2.32	8	1
1:A:67:MET:HE3	4:A:203:KOB:C2	0.40	2.46	15	1
4:A:203:KOB:C5	4:A:203:KOB:HAD	0.40	2.28	15	1

6.3 Torsion angles [i](#)

6.3.1 Protein backbone [i](#)

In the following table, the Percentiles column shows the percent Ramachandran outliers of the chain as a percentile score with respect to all PDB entries followed by that with respect to all NMR entries. The Analysed column shows the number of residues for which the backbone conformation was analysed and the total number of residues.

Mol	Chain	Analysed	Favoured	Allowed	Outliers	Percentiles
1	A	143/172 (83%)	132±2 (92±1%)	11±2 (7±1%)	1±1 (1±1%)	29 74
All	All	2145/2580 (83%)	1974 (92%)	158 (7%)	13 (1%)	29 74

All 5 unique Ramachandran outliers are listed below. They are sorted by the frequency of occurrence in the ensemble.

Mol	Chain	Res	Type	Models (Total)
1	A	10	GLY	4
1	A	11	ALA	3
1	A	120	LEU	3
1	A	13	GLY	2

Continued on next page...

Continued from previous page...

Mol	Chain	Res	Type	Models (Total)
1	A	25	GLN	1

6.3.2 Protein sidechains [i](#)

In the following table, the Percentiles column shows the percent sidechain outliers of the chain as a percentile score with respect to all PDB entries followed by that with respect to all NMR entries. The Analysed column shows the number of residues for which the sidechain conformation was analysed and the total number of residues.

Mol	Chain	Analysed	Rotameric	Outliers	Percentiles	
1	A	125/148 (84%)	104±2 (83±2%)	21±2 (17±2%)	5	40
All	All	1875/2220 (84%)	1554 (83%)	321 (17%)	5	40

All 65 unique residues with a non-rotameric sidechain are listed below. They are sorted by the frequency of occurrence in the ensemble.

Mol	Chain	Res	Type	Models (Total)
1	A	2	THR	15
1	A	79	LEU	15
1	A	131	GLN	15
1	A	52	LEU	13
1	A	99	GLN	12
1	A	1	MET	12
1	A	5	LYS	11
1	A	154	ASP	10
1	A	102	ARG	9
1	A	166	HIS	9
1	A	69	ASP	9
1	A	16	LYS	8
1	A	104	LYS	7
1	A	106	SER	7
1	A	123	ARG	7
1	A	149	ARG	7
1	A	161	ARG	7
1	A	101	LYS	7
1	A	135	ARG	6
1	A	82	PHE	6
1	A	92	ASP	6
1	A	97	ARG	6
1	A	145	SER	6
1	A	164	ARG	6

Continued on next page...

Continued from previous page...

Mol	Chain	Res	Type	Models (Total)
1	A	23	LEU	5
1	A	47	ASP	5
1	A	68	ARG	5
1	A	150	GLN	5
1	A	159	LEU	5
1	A	72	MET	5
1	A	17	SER	5
1	A	54	ASP	4
1	A	56	LEU	4
1	A	85	ASN	4
1	A	40	TYR	4
1	A	95	GLN	3
1	A	70	GLN	3
1	A	147	LYS	3
1	A	57	ASP	3
1	A	88	LYS	3
1	A	111	MET	3
1	A	67	MET	3
1	A	42	LYS	2
1	A	43	GLN	2
1	A	117	LYS	2
1	A	128	ARG	2
1	A	129	GLN	2
1	A	76	GLU	2
1	A	120	LEU	2
1	A	127	SER	2
1	A	19	LEU	2
1	A	143	GLU	2
1	A	89	SER	1
1	A	107	ASP	1
1	A	153	GLU	1
1	A	49	GLU	1
1	A	6	LEU	1
1	A	118	CYS	1
1	A	142	ILE	1
1	A	109	VAL	1
1	A	165	GLN	1
1	A	87	THR	1
1	A	98	GLU	1
1	A	41	ARG	1
1	A	148	THR	1

6.3.3 RNA [i](#)

There are no RNA molecules in this entry.

6.4 Non-standard residues in protein, DNA, RNA chains [i](#)

There are no non-standard protein/DNA/RNA residues in this entry.

6.5 Carbohydrates [i](#)

There are no monosaccharides in this entry.

6.6 Ligand geometry [i](#)

Of 3 ligands modelled in this entry, 1 is monoatomic - leaving 2 for Mogul analysis.

In the following table, the Counts columns list the number of bonds for which Mogul statistics could be retrieved, the number of bonds that are observed in the model and the number of bonds that are defined in the chemical component dictionary. The Link column lists molecule types, if any, to which the group is linked. The Z score for a bond length is the number of standard deviations the observed value is removed from the expected value. A bond length with $|Z| > 2$ is considered an outlier worth inspection. RMSZ is the average root-mean-square of all Z scores of the bond lengths.

Mol	Type	Chain	Res	Link	Bond lengths		
					Counts	RMSZ	#Z>2
2	GNP	A	201	3	29,34,34	2.34±0.00	6±0 (20±0%)
4	KOB	A	203	-	23,25,25	4.36±0.00	7±0 (30±0%)

In the following table, the Counts columns list the number of angles for which Mogul statistics could be retrieved, the number of angles that are observed in the model and the number of angles that are defined in the chemical component dictionary. The Link column lists molecule types, if any, to which the group is linked. The Z score for a bond angle is the number of standard deviations the observed value is removed from the expected value. A bond angle with $|Z| > 2$ is considered an outlier worth inspection. RMSZ is the average root-mean-square of all Z scores of the bond angles.

Mol	Type	Chain	Res	Link	Bond angles		
					Counts	RMSZ	#Z>2
2	GNP	A	201	3	33,54,54	2.26±0.02	10±1 (31±1%)
4	KOB	A	203	-	27,34,34	1.15±0.07	3±0 (9±1%)

In the following table, the Chirals column lists the number of chiral outliers, the number of chiral centers analysed, the number of these observed in the model and the number defined in the chemical component dictionary. Similar counts are reported in the Torsion and Rings columns. '-' means no outliers of that kind were identified.

Mol	Type	Chain	Res	Link	Chirals	Torsions	Rings
2	GNP	A	201	3	-	0±0,14,38,38	0±0,3,3,3
4	KOB	A	203	-	-	0±0,13,17,17	0±0,2,2,2

All unique bond outliers are listed below. They are sorted according to the Z-score of the worst occurrence in the ensemble.

Mol	Chain	Res	Type	Atoms	Z	Observed(Å)	Ideal(Å)	Models	
								Worst	Total
4	A	203	KOB	O3A-N3	11.69	1.42	1.22	11	15
4	A	203	KOB	O1A-N1	11.67	1.42	1.22	12	15
2	A	201	GNP	PG-O1G	9.69	1.61	1.46	13	15
4	A	203	KOB	N6-N7	7.85	1.23	1.39	10	15
4	A	203	KOB	C1-N1	6.74	1.33	1.45	12	15
4	A	203	KOB	C3-N3	4.91	1.33	1.45	2	15
2	A	201	GNP	C6-N1	4.26	1.40	1.33	15	15
4	A	203	KOB	C8-N8	4.04	1.33	1.41	14	15
4	A	203	KOB	C7-S7	3.14	1.75	1.68	15	15
2	A	201	GNP	PB-O2B	3.12	1.48	1.56	10	15
2	A	201	GNP	PG-O3G	3.11	1.48	1.56	7	15
2	A	201	GNP	C2-N1	2.90	1.40	1.35	12	15
2	A	201	GNP	O4'-C1'	2.42	1.44	1.41	6	15

All unique angle outliers are listed below. They are sorted according to the Z-score of the worst occurrence in the ensemble.

Mol	Chain	Res	Type	Atoms	Z	Observed(°)	Ideal(°)	Models	
								Worst	Total
2	A	201	GNP	C2-N3-C4	5.32	121.43	115.36	5	15
2	A	201	GNP	N3-C2-N1	5.21	120.28	127.22	5	15
2	A	201	GNP	O2B-PB-O1B	4.08	118.48	109.92	15	15
2	A	201	GNP	O1G-PG-N3B	4.03	105.84	111.77	10	15
2	A	201	GNP	PB-O3A-PA	3.65	119.75	132.62	9	15
2	A	201	GNP	C5-C6-N1	3.51	118.63	123.43	10	15
4	A	203	KOB	C7-N7-N6	3.35	117.19	121.04	14	3
4	A	203	KOB	C5-C6-N6	3.26	118.17	121.06	10	4
2	A	201	GNP	C3'-C2'-C1'	3.08	96.34	100.98	14	13
2	A	201	GNP	O2G-PG-O1G	3.02	105.85	113.45	2	15
2	A	201	GNP	O1B-PB-N3B	2.97	107.40	111.77	10	15
2	A	201	GNP	O4'-C1'-C2'	2.86	102.74	106.93	14	1

Continued on next page...

Continued from previous page...

Mol	Chain	Res	Type	Atoms	Z	Observed(°)	Ideal(°)	Models	
								Worst	Total
4	A	203	KOB	N7-C7-N8	2.56	119.90	115.36	1	9
4	A	203	KOB	C8-N8-C7	2.53	121.49	128.57	13	13
4	A	203	KOB	C10-C11-C12	2.23	119.86	122.83	8	11
2	A	201	GNP	C2-N1-C6	2.12	119.29	115.93	11	15
2	A	201	GNP	C2'-C3'-C4'	2.10	98.56	102.64	6	2
2	A	201	GNP	C4-C5-N7	2.04	107.28	109.40	14	4

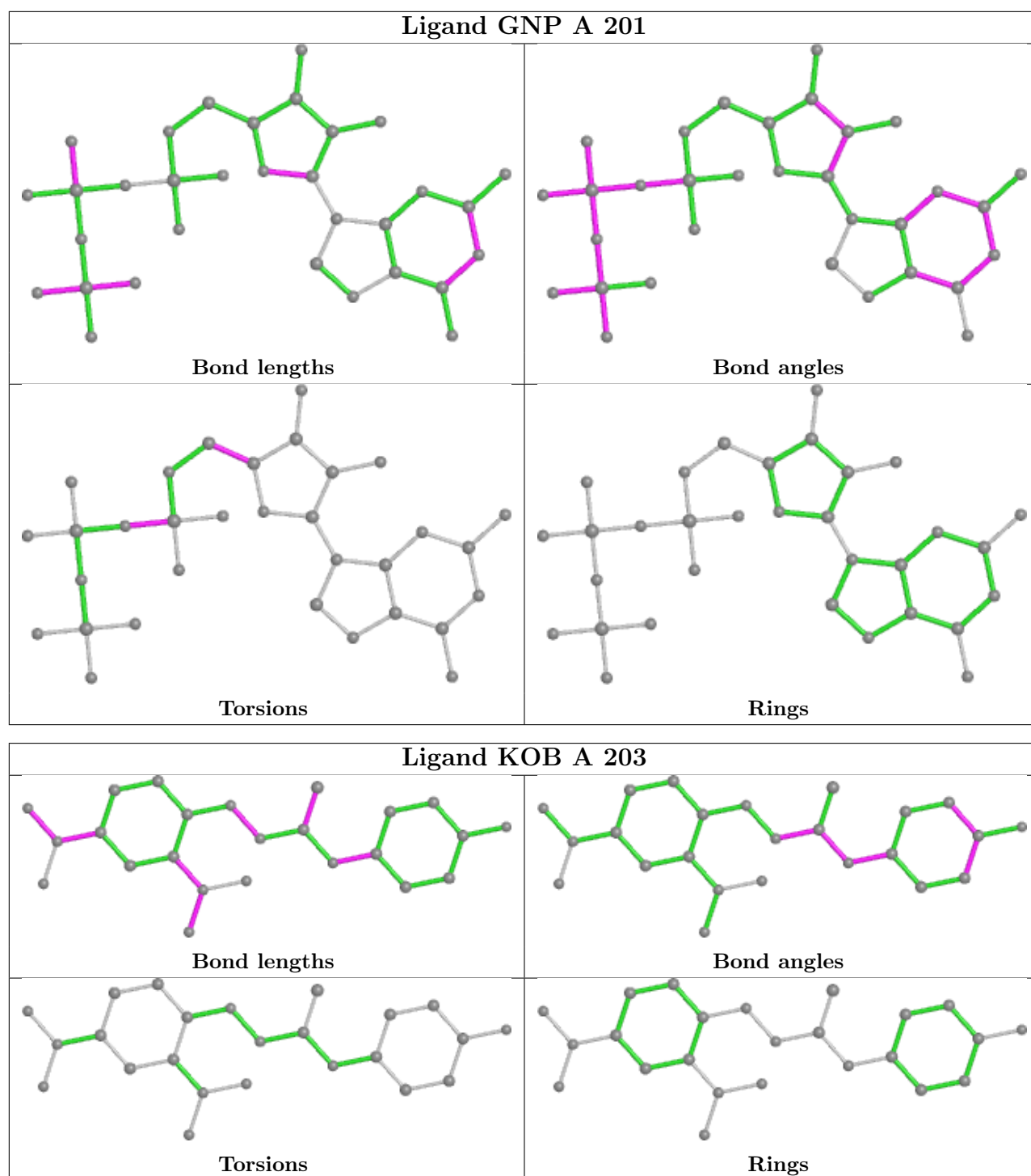
There are no chirality outliers.

All unique torsion outliers are listed below. They are sorted by the frequency of occurrence in the ensemble.

Mol	Chain	Res	Type	Atoms	Models (Total)
4	A	203	KOB	C5-C6-N6-N7	3
4	A	203	KOB	C1-C6-N6-N7	3

There are no ring outliers.

The following is a two-dimensional graphical depiction of Mogul quality analysis of bond lengths, bond angles, torsion angles, and ring geometry for all instances of the Ligand of Interest. In addition, ligands with molecular weight > 250 and outliers as shown on the validation Tables will also be included. For torsion angles, if less than 5% of the Mogul distribution of torsion angles is within 10 degrees of the torsion angle in question, then that torsion angle is considered an outlier. Any bond that is central to one or more torsion angles identified as an outlier by Mogul will be highlighted in the graph. For rings, the root-mean-square deviation (RMSD) between the ring in question and similar rings identified by Mogul is calculated over all ring torsion angles. If the average RMSD is greater than 60 degrees and the minimal RMSD between the ring in question and any Mogul-identified rings is also greater than 60 degrees, then that ring is considered an outlier. The outliers are highlighted in purple. The color gray indicates Mogul did not find sufficient equivalents in the CSD to analyse the geometry.



6.7 Other polymers [i](#)

There are no such molecules in this entry.

6.8 Polymer linkage issues

There are no chain breaks in this entry.

7 Chemical shift validation

The completeness of assignment taking into account all chemical shift lists is 8% for the well-defined parts and 8% for the entire structure.

7.1 Chemical shift list 1

File name: working_cs.cif

Chemical shift list name: *assigned_chem_shift_list_1*

7.1.1 Bookkeeping

The following table shows the results of parsing the chemical shift list and reports the number of nuclei with statistically unusual chemical shifts.

Total number of shifts	315
Number of shifts mapped to atoms	313
Number of unparsed shifts	0
Number of shifts with mapping errors	0
Number of shifts with mapping warnings	2
Number of shift outliers (ShiftChecker)	0

The following assigned chemical shifts were not mapped to the molecules present in the coordinate file.

- No matching atoms found in structure. All 2 occurrences are reported below.

Chain	Res	Type	Atom	Shift Data		
				Value	Uncertainty	Ambiguity
A	203	KOB	H1	7.102	0.008	1
A	203	KOB	H3	7.327	0.001	1

7.1.2 Chemical shift referencing

No chemical shift referencing corrections were calculated (not enough data).

7.1.3 Completeness of resonance assignments

The following table shows the completeness of the chemical shift assignments for the well-defined regions of the structure. The overall completeness is 8%, i.e. 146 atoms were assigned a chemical shift out of a possible 1808. 13 out of 25 assigned methyl groups (LEU and VAL) were assigned stereospecifically.

	Total	¹ H	¹³ C	¹⁵ N
Backbone	0/721 (0%)	0/288 (0%)	0/290 (0%)	0/143 (0%)
Sidechain	142/979 (15%)	76/568 (13%)	66/357 (18%)	0/54 (0%)
Aromatic	4/108 (4%)	4/56 (7%)	0/48 (0%)	0/4 (0%)
Overall	146/1808 (8%)	80/912 (9%)	66/695 (9%)	0/201 (0%)

The following table shows the completeness of the chemical shift assignments for the full structure. The overall completeness is 8%, i.e. 157 atoms were assigned a chemical shift out of a possible 2048. 14 out of 26 assigned methyl groups (LEU and VAL) were assigned stereospecifically.

	Total	¹ H	¹³ C	¹⁵ N
Backbone	0/824 (0%)	0/329 (0%)	0/332 (0%)	0/163 (0%)
Sidechain	153/1083 (14%)	82/629 (13%)	71/398 (18%)	0/56 (0%)
Aromatic	4/141 (3%)	4/73 (5%)	0/62 (0%)	0/6 (0%)
Overall	157/2048 (8%)	86/1031 (8%)	71/792 (9%)	0/225 (0%)

7.1.4 Statistically unusual chemical shifts [i](#)

There are no statistically unusual chemical shifts.

7.1.5 Random Coil Index (RCI) plots [i](#)

The image below reports *random coil index* values for the protein chains in the structure. The height of each bar gives a probability of a given residue to be disordered, as predicted from the available chemical shifts and the amino acid sequence. A value above 0.2 is an indication of significant predicted disorder. The colour of the bar shows whether the residue is in the well-defined core (black) or in the ill-defined residue ranges (cyan), as described in section 2 on ensemble composition.

Random coil index (RCI) for chain A:

