



Full wwPDB X-ray Structure Validation Report ⓘ

Nov 19, 2023 – 06:16 PM JST

PDB ID : 6LVZ
Title : Crystal structure of TLR7/Cpd-3 (SM-394830) complex
Authors : Zhang, Z.; Ohto, U.; Shimizu, T.
Deposited on : 2020-02-06
Resolution : 2.83 Å(reported)

This is a Full wwPDB X-ray Structure Validation Report for a publicly released PDB entry.

We welcome your comments at validation@mail.wwpdb.org

A user guide is available at

<https://www.wwpdb.org/validation/2017/XrayValidationReportHelp>

with specific help available everywhere you see the ⓘ symbol.

The types of validation reports are described at

<http://www.wwpdb.org/validation/2017/FAQs#types>.

The following versions of software and data (see [references ⓘ](#)) were used in the production of this report:

MolProbity : 4.02b-467
Mogul : 1.8.5 (274361), CSD as541be (2020)
Xtriage (Phenix) : 1.13
EDS : 2.36
buster-report : 1.1.7 (2018)
Percentile statistics : 20191225.v01 (using entries in the PDB archive December 25th 2019)
Refmac : 5.8.0158
CCP4 : 7.0.044 (Gargrove)
Ideal geometry (proteins) : Engh & Huber (2001)
Ideal geometry (DNA, RNA) : Parkinson et al. (1996)
Validation Pipeline (wwPDB-VP) : 2.36

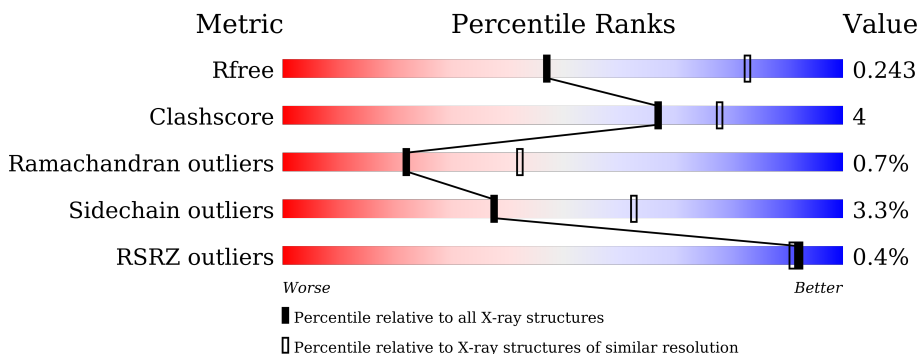
1 Overall quality at a glance

The following experimental techniques were used to determine the structure:

X-RAY DIFFRACTION

The reported resolution of this entry is 2.83 Å.

Percentile scores (ranging between 0-100) for global validation metrics of the entry are shown in the following graphic. The table shows the number of entries on which the scores are based.



Metric	Whole archive (#Entries)	Similar resolution (#Entries, resolution range(Å))
R_{free}	130704	1031 (2.86-2.82)
Clashscore	141614	1078 (2.86-2.82)
Ramachandran outliers	138981	1050 (2.86-2.82)
Sidechain outliers	138945	1051 (2.86-2.82)
RSRZ outliers	127900	1019 (2.86-2.82)

The table below summarises the geometric issues observed across the polymeric chains and their fit to the electron density. The red, orange, yellow and green segments of the lower bar indicate the fraction of residues that contain outliers for ≥ 3 , 2, 1 and 0 types of geometric quality criteria respectively. A grey segment represents the fraction of residues that are not modelled. The numeric value for each fraction is indicated below the corresponding segment, with a dot representing fractions $\leq 5\%$. The upper red bar (where present) indicates the fraction of residues that have poor fit to the electron density. The numeric value is given above the bar.

Mol	Chain	Length	Quality of chain
1	A	823	 79% 13% 6%
1	B	823	 81% 12% 6%
2	C	3	 100%
2	D	3	 100%
3	E	2	 100%

2 Entry composition i

There are 7 unique types of molecules in this entry. The entry contains 12864 atoms, of which 0 are hydrogens and 0 are deuteriums.

In the tables below, the ZeroOcc column contains the number of atoms modelled with zero occupancy, the AltConf column contains the number of residues with at least one atom in alternate conformation and the Trace column contains the number of residues modelled with at most 2 atoms.

- Molecule 1 is a protein called Toll-like receptor 7.

Mol	Chain	Residues	Atoms					ZeroOcc	AltConf	Trace
			Total	C	N	O	S			
1	B	772	6250	4006	1064	1150	30	0	0	0
1	A	772	6250	4006	1064	1150	30	0	0	0

There are 40 discrepancies between the modelled and reference sequences:

Chain	Residue	Modelled	Actual	Comment	Reference
B	23	ARG	-	expression tag	UNP B3Y653
B	24	SER	-	expression tag	UNP B3Y653
B	25	PRO	-	expression tag	UNP B3Y653
B	26	TRP	-	expression tag	UNP B3Y653
B	167	GLN	ASN	engineered mutation	UNP B3Y653
B	389	GLN	ASN	engineered mutation	UNP B3Y653
B	440	LEU	SER	engineered mutation	UNP B3Y653
B	441	VAL	GLU	engineered mutation	UNP B3Y653
B	442	PRO	VAL	engineered mutation	UNP B3Y653
B	443	ARG	GLY	engineered mutation	UNP B3Y653
B	444	GLY	PHE	engineered mutation	UNP B3Y653
B	445	SER	CYS	engineered mutation	UNP B3Y653
B	488	GLN	ASN	engineered mutation	UNP B3Y653
B	799	GLN	ASN	engineered mutation	UNP B3Y653
B	840	GLU	-	expression tag	UNP B3Y653
B	841	PHE	-	expression tag	UNP B3Y653
B	842	LEU	-	expression tag	UNP B3Y653
B	843	VAL	-	expression tag	UNP B3Y653
B	844	PRO	-	expression tag	UNP B3Y653
B	845	ARG	-	expression tag	UNP B3Y653
A	23	ARG	-	expression tag	UNP B3Y653
A	24	SER	-	expression tag	UNP B3Y653
A	25	PRO	-	expression tag	UNP B3Y653
A	26	TRP	-	expression tag	UNP B3Y653
A	167	GLN	ASN	engineered mutation	UNP B3Y653

Continued on next page...

Continued from previous page...

Chain	Residue	Modelled	Actual	Comment	Reference
A	389	GLN	ASN	engineered mutation	UNP B3Y653
A	440	LEU	SER	engineered mutation	UNP B3Y653
A	441	VAL	GLU	engineered mutation	UNP B3Y653
A	442	PRO	VAL	engineered mutation	UNP B3Y653
A	443	ARG	GLY	engineered mutation	UNP B3Y653
A	444	GLY	PHE	engineered mutation	UNP B3Y653
A	445	SER	CYS	engineered mutation	UNP B3Y653
A	488	GLN	ASN	engineered mutation	UNP B3Y653
A	799	GLN	ASN	engineered mutation	UNP B3Y653
A	840	GLU	-	expression tag	UNP B3Y653
A	841	PHE	-	expression tag	UNP B3Y653
A	842	LEU	-	expression tag	UNP B3Y653
A	843	VAL	-	expression tag	UNP B3Y653
A	844	PRO	-	expression tag	UNP B3Y653
A	845	ARG	-	expression tag	UNP B3Y653

- Molecule 2 is an oligosaccharide called beta-D-mannopyranose-(1-4)-2-acetamido-2-deoxy-beta-D-glucopyranose-(1-4)-2-acetamido-2-deoxy-beta-D-glucopyranose.



Mol	Chain	Residues	Atoms				ZeroOcc	AltConf	Trace
2	C	3	Total	C	N	O	0	0	0
			39	22	2	15			
2	D	3	Total	C	N	O	0	0	0
			39	22	2	15			

- Molecule 3 is an oligosaccharide called 2-acetamido-2-deoxy-beta-D-glucopyranose-(1-4)-2-acetamido-2-deoxy-beta-D-glucopyranose.



Mol	Chain	Residues	Atoms				ZeroOcc	AltConf	Trace
3	E	2	Total	C	N	O	0	0	0
			28	16	2	10			

- Molecule 4 is 2-acetamido-2-deoxy-beta-D-glucopyranose (three-letter code: NAG) (formula: C₈H₁₅NO₆).



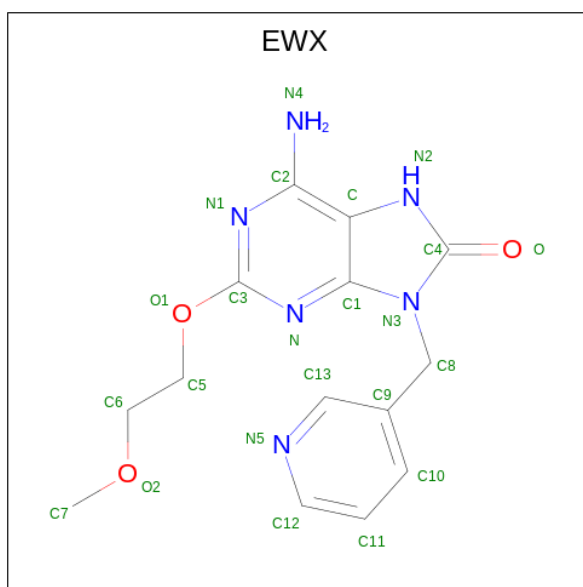
Mol	Chain	Residues	Atoms				ZeroOcc	AltConf
			Total	C	N	O		
4	B	1	Total	C	N	O	0	0
			14	8	1	5		
4	B	1	Total	C	N	O	0	0
			14	8	1	5		
4	B	1	Total	C	N	O	0	0
			14	8	1	5		
4	B	1	Total	C	N	O	0	0
			14	8	1	5		
4	B	1	Total	C	N	O	0	0
			14	8	1	5		
4	B	1	Total	C	N	O	0	0
			14	8	1	5		
4	B	1	Total	C	N	O	0	0
			14	8	1	5		
4	B	1	Total	C	N	O	0	0
			14	8	1	5		
4	A	1	Total	C	N	O	0	0
			14	8	1	5		
4	A	1	Total	C	N	O	0	0
			14	8	1	5		
4	A	1	Total	C	N	O	0	0
			14	8	1	5		

- Molecule 5 is SULFATE ION (three-letter code: SO4) (formula: O₄S).



Mol	Chain	Residues	Atoms			ZeroOcc	AltConf
5	B	1	Total	O	S	0	0
			5	4	1		
5	B	1	Total	O	S	0	0
			5	4	1		
5	B	1	Total	O	S	0	0
			5	4	1		
5	B	1	Total	O	S	0	0
			5	4	1		
5	A	1	Total	O	S	0	0
			5	4	1		
5	A	1	Total	O	S	0	0
			5	4	1		
5	A	1	Total	O	S	0	0
			5	4	1		

- Molecule 6 is 6-azanyl-2-(2-methoxyethoxy)-9-(pyridin-3-ylmethyl)-7H-purin-8-one (three-letter code: EWX) (formula: C₁₄H₁₆N₆O₃) (labeled as "Ligand of Interest" by depositor).



Mol	Chain	Residues	Atoms				ZeroOcc	AltConf
6	B	1	Total	C	N	O	0	0
			23	14	6	3		
6	B	1	Total	C	N	O	0	0
			23	14	6	3		

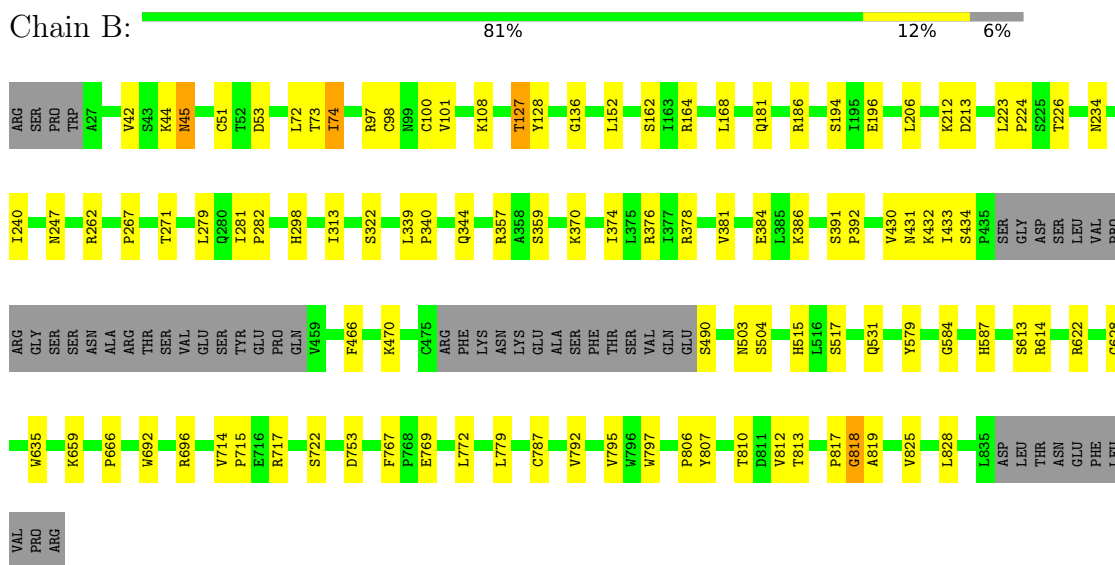
- Molecule 7 is water.

Mol	Chain	Residues	Atoms		ZeroOcc	AltConf
7	B	6	Total	O	0	0
			6	6		
7	A	7	Total	O	0	0
			7	7		

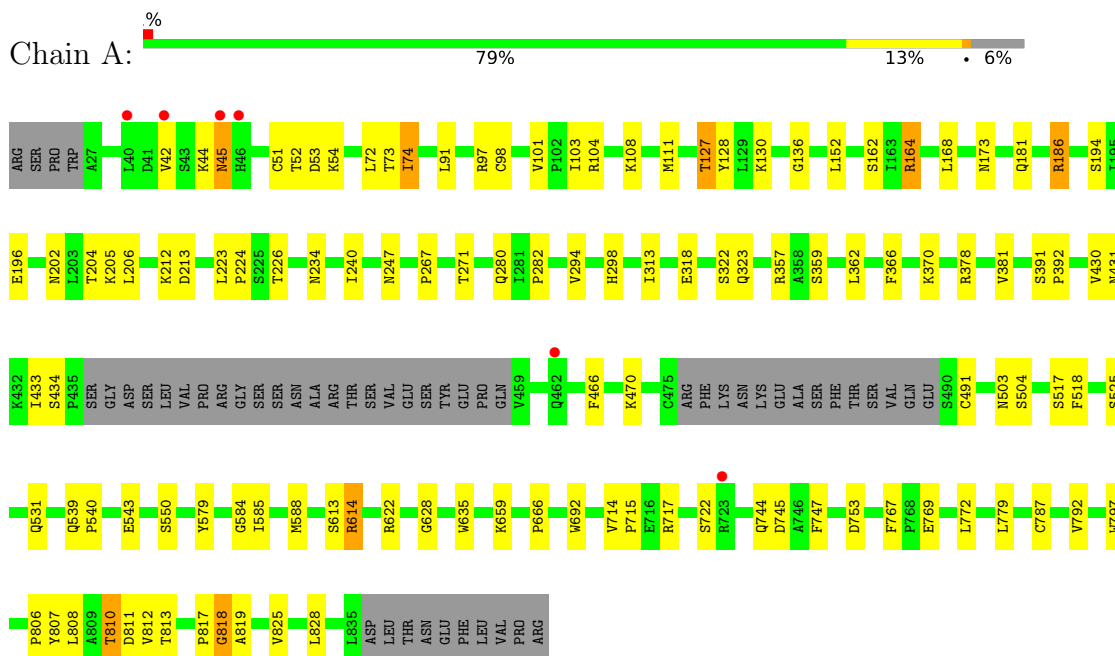
3 Residue-property plots

These plots are drawn for all protein, RNA, DNA and oligosaccharide chains in the entry. The first graphic for a chain summarises the proportions of the various outlier classes displayed in the second graphic. The second graphic shows the sequence view annotated by issues in geometry and electron density. Residues are color-coded according to the number of geometric quality criteria for which they contain at least one outlier: green = 0, yellow = 1, orange = 2 and red = 3 or more. A red dot above a residue indicates a poor fit to the electron density ($RSRZ > 2$). Stretches of 2 or more consecutive residues without any outlier are shown as a green connector. Residues present in the sample, but not in the model, are shown in grey.

- Molecule 1: Toll-like receptor 7



- Molecule 1: Toll-like receptor 7




- Molecule 2: beta-D-mannopyranose-(1-4)-2-acetamido-2-deoxy-beta-D-glucopyranose-(1-4)-2-acetamido-2-deoxy-beta-D-glucopyranose

Chain C:  100%

MAG1
MAG2
BMA3

- Molecule 2: beta-D-mannopyranose-(1-4)-2-acetamido-2-deoxy-beta-D-glucopyranose-(1-4)-2-acetamido-2-deoxy-beta-D-glucopyranose

Chain D:  100%

MAG1
MAG2
BMA3

- Molecule 3: 2-acetamido-2-deoxy-beta-D-glucopyranose-(1-4)-2-acetamido-2-deoxy-beta-D-glucopyranose

Chain E:  100%

MAG1
MAG2

4 Data and refinement statistics

Property	Value	Source
Space group	P 21 21 21	Depositor
Cell constants a, b, c, α , β , γ	98.55Å 139.08Å 149.20Å 90.00° 90.00° 90.00°	Depositor
Resolution (Å)	46.87 – 2.83 46.83 – 2.83	Depositor EDS
% Data completeness (in resolution range)	99.9 (46.87-2.83) 100.0 (46.83-2.83)	Depositor EDS
R_{merge}	(Not available)	Depositor
R_{sym}	(Not available)	Depositor
$\langle I/\sigma(I) \rangle$ ¹	2.40 (at 2.81Å)	Xtrriage
Refinement program	REFMAC 5.8.0230	Depositor
R, R_{free}	0.187 , 0.245 0.191 , 0.243	Depositor DCC
R_{free} test set	2485 reflections (5.01%)	wwPDB-VP
Wilson B-factor (Å ²)	61.4	Xtrriage
Anisotropy	0.046	Xtrriage
Bulk solvent k_{sol} (e/Å ³), B_{sol} (Å ²)	0.34 , 40.1	EDS
L-test for twinning ²	$\langle L \rangle = 0.50$, $\langle L^2 \rangle = 0.33$	Xtrriage
Estimated twinning fraction	No twinning to report.	Xtrriage
F_o, F_c correlation	0.95	EDS
Total number of atoms	12864	wwPDB-VP
Average B, all atoms (Å ²)	61.0	wwPDB-VP

Xtrriage's analysis on translational NCS is as follows: *The largest off-origin peak in the Patterson function is 5.65% of the height of the origin peak. No significant pseudotranslation is detected.*

¹Intensities estimated from amplitudes.

²Theoretical values of $\langle |L| \rangle$, $\langle L^2 \rangle$ for acentric reflections are 0.5, 0.333 respectively for untwinned datasets, and 0.375, 0.2 for perfectly twinned datasets.

5 Model quality [i](#)

5.1 Standard geometry [i](#)

Bond lengths and bond angles in the following residue types are not validated in this section: BMA, SO4, NAG, EWX

The Z score for a bond length (or angle) is the number of standard deviations the observed value is removed from the expected value. A bond length (or angle) with $|Z| > 5$ is considered an outlier worth inspection. RMSZ is the root-mean-square of all Z scores of the bond lengths (or angles).

Mol	Chain	Bond lengths		Bond angles	
		RMSZ	# Z >5	RMSZ	# Z >5
1	A	0.52	0/6381	0.70	0/8646
1	B	0.54	0/6381	0.73	0/8646
All	All	0.53	0/12762	0.72	0/17292

Chiral center outliers are detected by calculating the chiral volume of a chiral center and verifying if the center is modelled as a planar moiety or with the opposite hand. A planarity outlier is detected by checking planarity of atoms in a peptide group, atoms in a mainchain group or atoms of a sidechain that are expected to be planar.

Mol	Chain	#Chirality outliers	#Planarity outliers
1	A	0	8
1	B	0	9
All	All	0	17

There are no bond length outliers.

There are no bond angle outliers.

There are no chirality outliers.

All (17) planarity outliers are listed below:

Mol	Chain	Res	Type	Group
1	A	164	ARG	Sidechain
1	A	186	ARG	Sidechain
1	A	357	ARG	Sidechain
1	A	378	ARG	Sidechain
1	A	614	ARG	Sidechain
1	A	717	ARG	Sidechain
1	A	812	VAL	Peptide
1	A	97	ARG	Sidechain
1	B	186	ARG	Sidechain

Continued on next page...

Continued from previous page...

Mol	Chain	Res	Type	Group
1	B	262	ARG	Sidechain
1	B	357	ARG	Sidechain
1	B	378	ARG	Sidechain
1	B	614	ARG	Sidechain
1	B	696	ARG	Sidechain
1	B	717	ARG	Sidechain
1	B	812	VAL	Peptide
1	B	97	ARG	Sidechain

5.2 Too-close contacts [i](#)

In the following table, the Non-H and H(model) columns list the number of non-hydrogen atoms and hydrogen atoms in the chain respectively. The H(added) column lists the number of hydrogen atoms added and optimized by MolProbity. The Clashes column lists the number of clashes within the asymmetric unit, whereas Symm-Clashes lists symmetry-related clashes.

Mol	Chain	Non-H	H(model)	H(added)	Clashes	Symm-Clashes
1	A	6250	0	6299	57	0
1	B	6250	0	6295	46	0
2	C	39	0	34	0	0
2	D	39	0	34	0	0
3	E	28	0	25	0	0
4	A	42	0	39	3	0
4	B	112	0	104	2	0
5	A	20	0	0	0	0
5	B	25	0	0	1	0
6	B	46	0	0	1	0
7	A	7	0	0	0	0
7	B	6	0	0	0	0
All	All	12864	0	12830	100	0

The all-atom clashscore is defined as the number of clashes found per 1000 atoms (including hydrogen atoms). The all-atom clashscore for this structure is 4.

All (100) close contacts within the same asymmetric unit are listed below, sorted by their clash magnitude.

Atom-1	Atom-2	Interatomic distance (Å)	Clash overlap (Å)
1:B:376:ARG:NH1	5:B:1013:SO4:O3	2.10	0.81
1:B:433:ILE:H	1:B:503:ASN:HD22	1.28	0.79
1:A:433:ILE:H	1:A:503:ASN:HD22	1.30	0.79

Continued on next page...

Continued from previous page...

Atom-1	Atom-2	Interatomic distance (Å)	Clash overlap (Å)
1:A:173:ASN:HD22	1:A:205:LYS:HE3	1.55	0.71
1:B:772:LEU:HD13	1:B:797:TRP:CZ2	2.27	0.69
1:A:206:LEU:O	1:A:226:THR:HG23	1.92	0.69
1:B:206:LEU:O	1:B:226:THR:HG23	1.94	0.68
1:A:173:ASN:ND2	1:A:205:LYS:HE3	2.09	0.67
1:A:73:THR:HG22	1:A:74:ILE:HG13	1.78	0.63
1:B:433:ILE:H	1:B:503:ASN:ND2	1.97	0.63
1:B:73:THR:HG22	1:B:74:ILE:HG13	1.80	0.62
1:A:433:ILE:H	1:A:503:ASN:ND2	1.96	0.62
1:B:181:GLN:HE21	1:B:212:LYS:HE3	1.67	0.60
1:A:714:VAL:HB	1:A:715:PRO:HD2	1.83	0.60
1:A:806:PRO:HB2	1:A:807:TYR:CD2	2.38	0.59
1:A:181:GLN:HE21	1:A:212:LYS:HE3	1.66	0.59
1:B:714:VAL:HB	1:B:715:PRO:HD2	1.86	0.58
1:B:635:TRP:HB3	1:B:666:PRO:HG2	1.87	0.56
1:A:787:CYS:HB3	1:A:828:LEU:HD21	1.88	0.56
1:B:806:PRO:HB2	1:B:807:TYR:CD2	2.42	0.54
1:B:431:ASN:CB	1:B:503:ASN:HD21	2.20	0.54
1:B:433:ILE:N	1:B:503:ASN:HD22	2.02	0.54
1:A:433:ILE:N	1:A:503:ASN:HD22	2.02	0.54
1:B:224:PRO:HB2	1:B:226:THR:HG22	1.89	0.54
1:A:434:SER:HB3	1:A:504:SER:O	2.08	0.54
1:B:584:GLY:HA3	1:A:466:PHE:CE2	2.43	0.54
1:B:391:SER:N	1:B:392:PRO:CD	2.71	0.54
1:A:224:PRO:HB2	1:A:226:THR:HG22	1.91	0.53
1:A:223:LEU:O	1:A:247:ASN:ND2	2.41	0.53
1:B:434:SER:HB3	1:B:504:SER:O	2.09	0.53
1:A:635:TRP:HB3	1:A:666:PRO:HG2	1.91	0.53
1:B:787:CYS:HB3	1:B:828:LEU:HD21	1.92	0.52
1:B:490:SER:HA	4:B:1001:NAG:O7	2.09	0.52
1:B:767:PHE:HB3	1:B:772:LEU:HD11	1.91	0.52
1:B:223:LEU:O	1:B:247:ASN:ND2	2.44	0.51
1:B:753:ASP:HA	1:B:779:LEU:HB2	1.91	0.51
1:A:213:ASP:OD2	1:A:234:ASN:HB2	2.09	0.51
1:A:53:ASP:HA	1:A:74:ILE:O	2.11	0.51
1:A:431:ASN:CB	1:A:503:ASN:HD21	2.23	0.51
1:B:213:ASP:OD2	1:B:234:ASN:HB2	2.11	0.50
1:A:391:SER:N	1:A:392:PRO:CD	2.75	0.50
1:A:753:ASP:HA	1:A:779:LEU:HB2	1.93	0.49
1:A:267:PRO:CG	1:A:466:PHE:O	2.60	0.49
1:A:692:TRP:CE2	1:A:715:PRO:HD3	2.47	0.49

Continued on next page...

Continued from previous page...

Atom-1	Atom-2	Interatomic distance (Å)	Clash overlap (Å)
1:B:267:PRO:CG	1:B:466:PHE:O	2.61	0.49
1:B:692:TRP:CE2	1:B:715:PRO:HD3	2.48	0.48
1:A:362:LEU:HD22	1:A:366:PHE:CE1	2.49	0.48
1:A:767:PHE:HB3	1:A:772:LEU:HD11	1.94	0.48
1:B:51:CYS:HB2	1:B:72:LEU:HD23	1.96	0.48
1:A:810:THR:HG22	1:A:811:ASP:HB2	1.95	0.48
1:B:466:PHE:CE2	1:A:584:GLY:HA3	2.49	0.47
1:B:53:ASP:HA	1:B:74:ILE:O	2.14	0.47
1:A:772:LEU:HD13	1:A:797:TRP:CZ2	2.49	0.47
1:B:431:ASN:HB2	1:B:503:ASN:HD21	1.79	0.46
1:A:745:ASP:HA	1:A:747:PHE:CZ	2.50	0.46
1:B:432:LYS:HE2	1:A:579:TYR:OH	2.16	0.45
1:A:52:THR:O	1:A:54:LYS:HE3	2.16	0.44
1:A:104:ARG:O	1:A:186:ARG:NH1	2.51	0.44
1:A:298:HIS:CE1	1:A:323:GLN:HG3	2.53	0.44
1:B:127:THR:HG22	1:B:128:TYR:CD2	2.53	0.44
1:A:127:THR:HG22	1:A:128:TYR:CD2	2.52	0.44
1:B:298:HIS:HA	1:B:322:SER:O	2.18	0.43
6:B:1015:EWX:N4	1:A:585:ILE:HG23	2.33	0.43
1:B:240:ILE:O	1:B:282:PRO:CD	2.67	0.43
1:B:817:PRO:O	1:B:819:ALA:N	2.52	0.43
1:A:518:PHE:HA	1:A:543:GLU:OE1	2.18	0.43
1:B:628:GLY:HA2	1:B:659:LYS:O	2.18	0.43
1:A:240:ILE:O	1:A:282:PRO:CD	2.66	0.43
1:B:344:GLN:HG2	1:B:374:ILE:HB	2.00	0.43
1:A:431:ASN:HB2	1:A:503:ASN:HD21	1.84	0.43
1:A:491:CYS:HB3	4:A:901:NAG:H81	2.01	0.43
1:B:152:LEU:C	1:B:152:LEU:HD23	2.38	0.43
1:A:628:GLY:HA2	1:A:659:LYS:O	2.19	0.43
1:A:51:CYS:HB2	1:A:72:LEU:HD23	2.00	0.43
1:A:152:LEU:C	1:A:152:LEU:HD23	2.39	0.43
1:A:298:HIS:HA	1:A:322:SER:O	2.19	0.42
1:A:98:CYS:HA	1:A:136:GLY:O	2.19	0.42
1:A:525:SER:HA	1:A:550:SER:O	2.19	0.42
1:B:579:TYR:O	1:B:587:HIS:HE1	2.01	0.42
1:B:98:CYS:HA	1:B:136:GLY:O	2.19	0.42
1:B:384:GLU:OE2	1:B:386:LYS:HE2	2.19	0.42
1:A:808:LEU:HD23	1:A:808:LEU:HA	1.93	0.42
1:A:103:ILE:HD11	1:A:111:MET:SD	2.60	0.42
1:B:44:LYS:O	1:B:45:ASN:C	2.59	0.41
1:B:164:ARG:HG2	1:B:196:GLU:OE1	2.20	0.41

Continued on next page...

Continued from previous page...

Atom-1	Atom-2	Interatomic distance (Å)	Clash overlap (Å)
1:B:515:HIS:CD2	4:B:1002:NAG:H62	2.55	0.41
1:A:817:PRO:O	1:A:818:GLY:C	2.59	0.41
1:A:588:MET:CE	4:A:902:NAG:H5	2.50	0.41
1:A:817:PRO:O	1:A:819:ALA:N	2.53	0.41
1:A:202:ASN:O	1:A:204:THR:HG23	2.20	0.41
1:B:339:LEU:N	1:B:340:PRO:CD	2.84	0.41
1:B:817:PRO:O	1:B:818:GLY:C	2.59	0.41
1:A:539:GLN:N	1:A:540:PRO:CD	2.84	0.41
1:A:588:MET:HE1	4:A:902:NAG:H5	2.02	0.41
1:B:795:VAL:HG21	1:B:828:LEU:HD23	2.03	0.41
1:A:294:VAL:HG22	1:A:318:GLU:HB3	2.04	0.40
1:A:91:LEU:HD23	1:A:91:LEU:HA	1.96	0.40
1:B:279:LEU:HD23	1:B:281:ILE:HD11	2.04	0.40
1:A:44:LYS:O	1:A:45:ASN:C	2.59	0.40
1:A:164:ARG:HG2	1:A:196:GLU:OE1	2.21	0.40

There are no symmetry-related clashes.

5.3 Torsion angles [i](#)

5.3.1 Protein backbone [i](#)

In the following table, the Percentiles column shows the percent Ramachandran outliers of the chain as a percentile score with respect to all X-ray entries followed by that with respect to entries of similar resolution.

The Analysed column shows the number of residues for which the backbone conformation was analysed, and the total number of residues.

Mol	Chain	Analysed	Favoured	Allowed	Outliers	Percentiles
1	A	766/823 (93%)	712 (93%)	49 (6%)	5 (1%)	22 42
1	B	766/823 (93%)	714 (93%)	46 (6%)	6 (1%)	19 38
All	All	1532/1646 (93%)	1426 (93%)	95 (6%)	11 (1%)	22 42

All (11) Ramachandran outliers are listed below:

Mol	Chain	Res	Type
1	B	818	GLY
1	A	818	GLY
1	B	45	ASN

Continued on next page...

Continued from previous page...

Mol	Chain	Res	Type
1	A	45	ASN
1	B	74	ILE
1	B	100	CYS
1	B	381	VAL
1	A	381	VAL
1	A	74	ILE
1	B	430	VAL
1	A	430	VAL

5.3.2 Protein sidechains [i](#)

In the following table, the Percentiles column shows the percent sidechain outliers of the chain as a percentile score with respect to all X-ray entries followed by that with respect to entries of similar resolution.

The Analysed column shows the number of residues for which the sidechain conformation was analysed, and the total number of residues.

Mol	Chain	Analysed	Rotameric	Outliers	Percentiles
1	A	725/774 (94%)	699 (96%)	26 (4%)	35 60
1	B	725/774 (94%)	703 (97%)	22 (3%)	41 65
All	All	1450/1548 (94%)	1402 (97%)	48 (3%)	38 63

All (48) residues with a non-rotameric sidechain are listed below:

Mol	Chain	Res	Type
1	B	42	VAL
1	B	101	VAL
1	B	108	LYS
1	B	127	THR
1	B	162	SER
1	B	168	LEU
1	B	194	SER
1	B	271	THR
1	B	313	ILE
1	B	359	SER
1	B	370	LYS
1	B	470	LYS
1	B	517	SER
1	B	531	GLN
1	B	613	SER

Continued on next page...

Continued from previous page...

Mol	Chain	Res	Type
1	B	622	ARG
1	B	722	SER
1	B	769	GLU
1	B	792	VAL
1	B	810	THR
1	B	813	THR
1	B	825	VAL
1	A	42	VAL
1	A	101	VAL
1	A	108	LYS
1	A	127	THR
1	A	130	LYS
1	A	162	SER
1	A	168	LEU
1	A	194	SER
1	A	271	THR
1	A	280	GLN
1	A	313	ILE
1	A	359	SER
1	A	370	LYS
1	A	470	LYS
1	A	517	SER
1	A	531	GLN
1	A	613	SER
1	A	614	ARG
1	A	622	ARG
1	A	722	SER
1	A	744	GLN
1	A	769	GLU
1	A	792	VAL
1	A	810	THR
1	A	813	THR
1	A	825	VAL

Sometimes sidechains can be flipped to improve hydrogen bonding and reduce clashes. All (24) such sidechains are listed below:

Mol	Chain	Res	Type
1	B	66	ASN
1	B	76	HIS
1	B	90	HIS
1	B	159	ASN
1	B	173	ASN

Continued on next page...

Continued from previous page...

Mol	Chain	Res	Type
1	B	181	GLN
1	B	503	ASN
1	B	514	GLN
1	B	587	HIS
1	B	599	GLN
1	B	708	HIS
1	B	732	ASN
1	A	66	ASN
1	A	76	HIS
1	A	90	HIS
1	A	173	ASN
1	A	181	GLN
1	A	503	ASN
1	A	514	GLN
1	A	587	HIS
1	A	599	GLN
1	A	708	HIS
1	A	720	ASN
1	A	732	ASN

5.3.3 RNA [i](#)

There are no RNA molecules in this entry.

5.4 Non-standard residues in protein, DNA, RNA chains [i](#)

There are no non-standard protein/DNA/RNA residues in this entry.

5.5 Carbohydrates [i](#)

8 monosaccharides are modelled in this entry.

In the following table, the Counts columns list the number of bonds (or angles) for which Mogul statistics could be retrieved, the number of bonds (or angles) that are observed in the model and the number of bonds (or angles) that are defined in the Chemical Component Dictionary. The Link column lists molecule types, if any, to which the group is linked. The Z score for a bond length (or angle) is the number of standard deviations the observed value is removed from the expected value. A bond length (or angle) with $|Z| > 2$ is considered an outlier worth inspection. RMSZ is the root-mean-square of all Z scores of the bond lengths (or angles).

Mol	Type	Chain	Res	Link	Bond lengths			Bond angles		
					Counts	RMSZ	# Z > 2	Counts	RMSZ	# Z > 2
2	NAG	C	1	1,2	14,14,15	0.49	0	17,19,21	1.16	2 (11%)
2	NAG	C	2	2	14,14,15	0.52	0	17,19,21	1.36	3 (17%)
2	BMA	C	3	2	11,11,12	0.93	1 (9%)	15,15,17	1.37	2 (13%)
2	NAG	D	1	1,2	14,14,15	0.72	1 (7%)	17,19,21	1.40	1 (5%)
2	NAG	D	2	2	14,14,15	0.55	0	17,19,21	1.29	1 (5%)
2	BMA	D	3	2	11,11,12	0.70	0	15,15,17	1.37	3 (20%)
3	NAG	E	1	1,3	14,14,15	0.42	0	17,19,21	1.09	1 (5%)
3	NAG	E	2	3	14,14,15	1.10	1 (7%)	17,19,21	2.26	6 (35%)

In the following table, the Chirals column lists the number of chiral outliers, the number of chiral centers analysed, the number of these observed in the model and the number defined in the Chemical Component Dictionary. Similar counts are reported in the Torsion and Rings columns. '-' means no outliers of that kind were identified.

Mol	Type	Chain	Res	Link	Chirals	Torsions	Rings
2	NAG	C	1	1,2	-	2/6/23/26	0/1/1/1
2	NAG	C	2	2	-	0/6/23/26	0/1/1/1
2	BMA	C	3	2	-	0/2/19/22	0/1/1/1
2	NAG	D	1	1,2	-	2/6/23/26	0/1/1/1
2	NAG	D	2	2	-	2/6/23/26	0/1/1/1
2	BMA	D	3	2	-	2/2/19/22	0/1/1/1
3	NAG	E	1	1,3	-	0/6/23/26	0/1/1/1
3	NAG	E	2	3	-	2/6/23/26	0/1/1/1

All (3) bond length outliers are listed below:

Mol	Chain	Res	Type	Atoms	Z	Observed(Å)	Ideal(Å)
2	C	3	BMA	C1-C2	2.11	1.57	1.52
3	E	2	NAG	C1-C2	2.10	1.55	1.52
2	D	1	NAG	C1-C2	-2.02	1.49	1.52

All (19) bond angle outliers are listed below:

Mol	Chain	Res	Type	Atoms	Z	Observed(°)	Ideal(°)
3	E	2	NAG	O5-C5-C6	4.68	114.53	107.20
2	D	2	NAG	C1-O5-C5	3.89	117.46	112.19
2	D	1	NAG	O5-C5-C6	3.80	113.16	107.20
3	E	2	NAG	C3-C4-C5	-3.56	103.88	110.24
2	C	2	NAG	C4-C3-C2	3.43	116.04	111.02

Continued on next page...

Continued from previous page...

Mol	Chain	Res	Type	Atoms	Z	Observed(°)	Ideal(°)
2	C	3	BMA	O2-C2-C1	3.36	116.02	109.15
3	E	2	NAG	C1-C2-N2	3.04	115.68	110.49
2	C	2	NAG	O3-C3-C4	-2.99	103.45	110.35
3	E	2	NAG	O5-C5-C4	-2.79	104.03	110.83
2	D	3	BMA	C2-C3-C4	-2.67	106.28	110.89
3	E	1	NAG	C1-O5-C5	2.64	115.77	112.19
3	E	2	NAG	O7-C7-C8	-2.62	117.20	122.06
3	E	2	NAG	O4-C4-C5	2.54	115.60	109.30
2	C	1	NAG	O4-C4-C3	-2.52	104.52	110.35
2	D	3	BMA	O5-C5-C6	2.27	110.77	107.20
2	C	1	NAG	O5-C1-C2	-2.10	107.97	111.29
2	C	3	BMA	O5-C1-C2	2.07	113.97	110.77
2	C	2	NAG	O5-C1-C2	-2.06	108.03	111.29
2	D	3	BMA	O3-C3-C2	2.03	113.89	109.99

There are no chirality outliers.

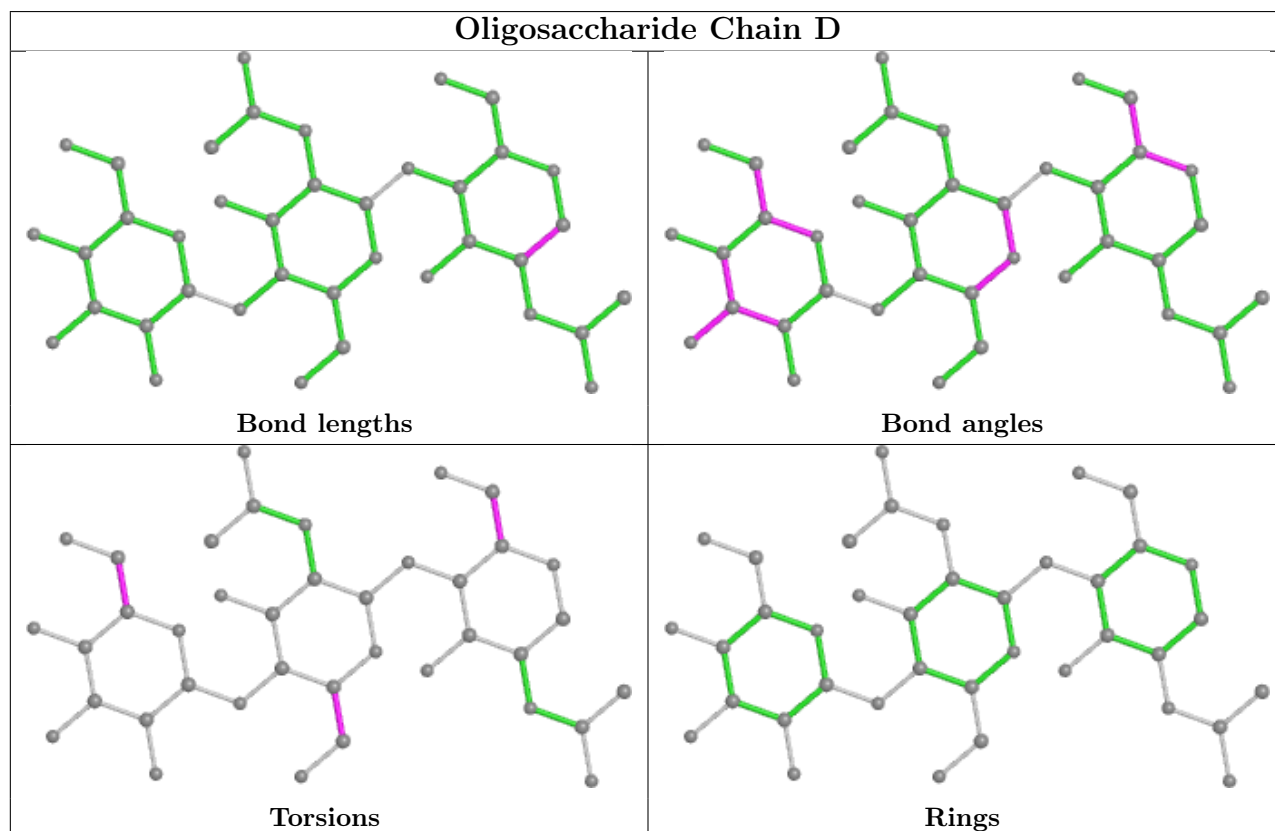
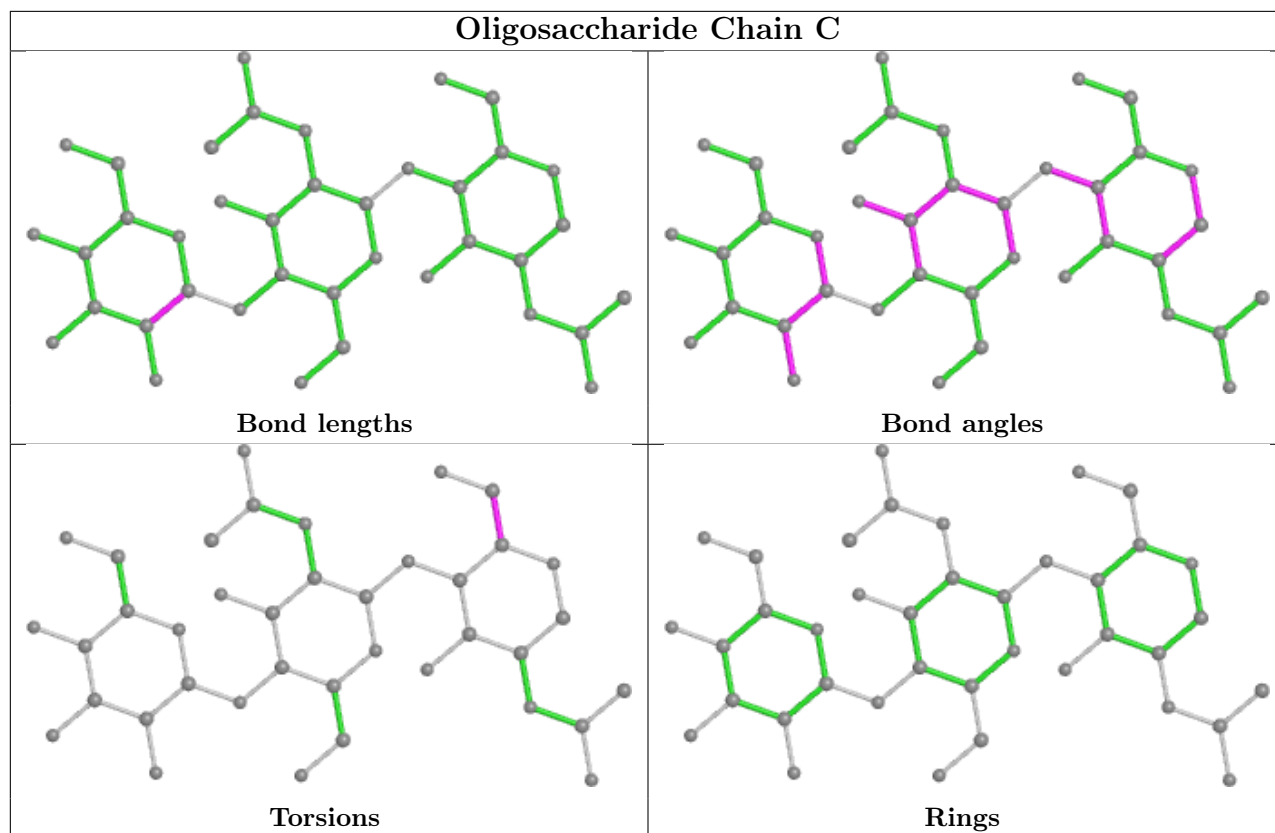
All (10) torsion outliers are listed below:

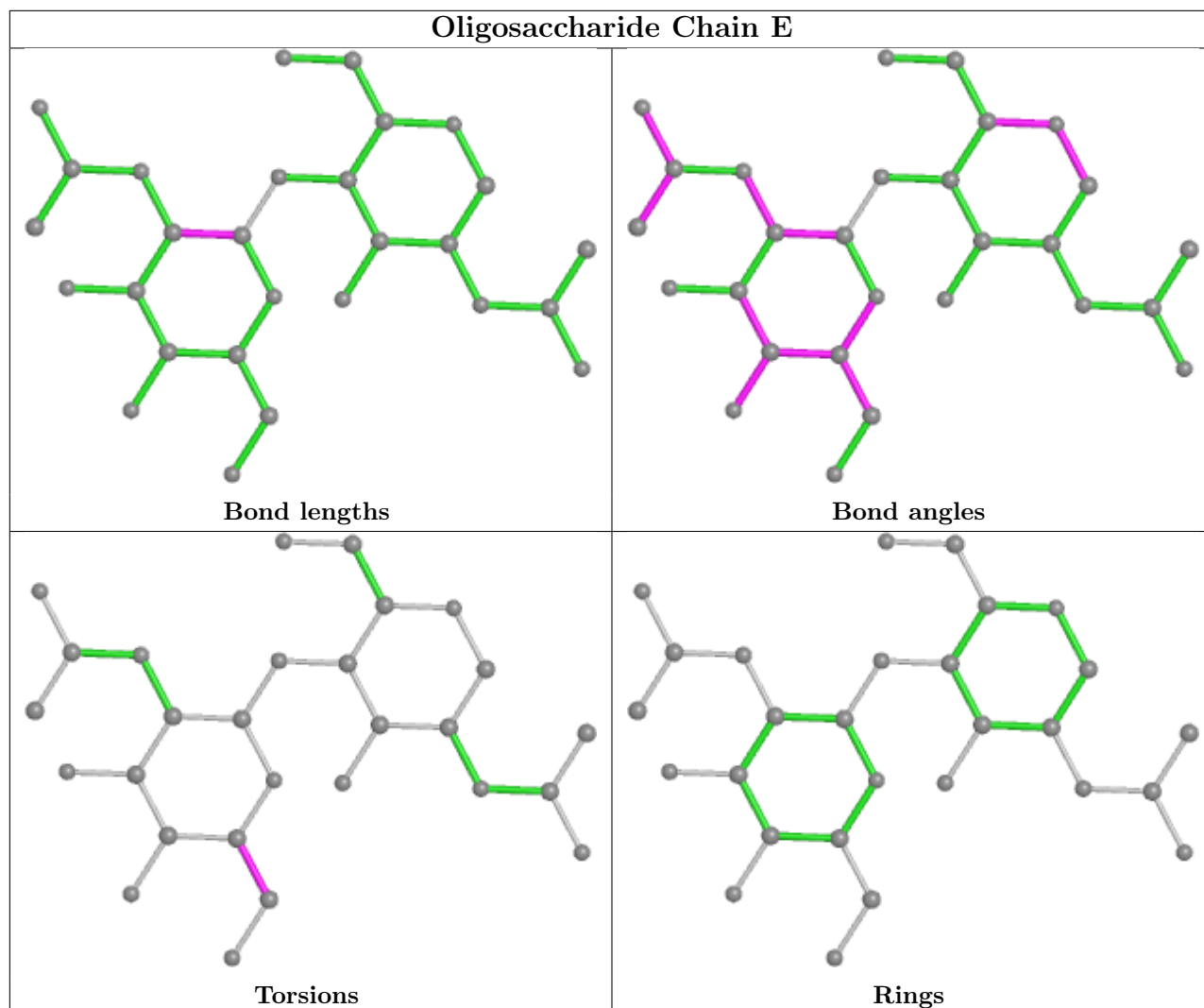
Mol	Chain	Res	Type	Atoms
2	C	1	NAG	O5-C5-C6-O6
2	D	3	BMA	C4-C5-C6-O6
2	D	1	NAG	O5-C5-C6-O6
2	D	3	BMA	O5-C5-C6-O6
2	C	1	NAG	C4-C5-C6-O6
2	D	1	NAG	C4-C5-C6-O6
3	E	2	NAG	O5-C5-C6-O6
3	E	2	NAG	C4-C5-C6-O6
2	D	2	NAG	C4-C5-C6-O6
2	D	2	NAG	O5-C5-C6-O6

There are no ring outliers.

No monomer is involved in short contacts.

The following is a two-dimensional graphical depiction of Mogul quality analysis of bond lengths, bond angles, torsion angles, and ring geometry for oligosaccharide.





5.6 Ligand geometry [i](#)

22 ligands are modelled in this entry.

In the following table, the Counts columns list the number of bonds (or angles) for which Mogul statistics could be retrieved, the number of bonds (or angles) that are observed in the model and the number of bonds (or angles) that are defined in the Chemical Component Dictionary. The Link column lists molecule types, if any, to which the group is linked. The Z score for a bond length (or angle) is the number of standard deviations the observed value is removed from the expected value. A bond length (or angle) with $|Z| > 2$ is considered an outlier worth inspection. RMSZ is the root-mean-square of all Z scores of the bond lengths (or angles).

Mol	Type	Chain	Res	Link	Bond lengths			Bond angles		
					Counts	RMSZ	$\# Z > 2$	Counts	RMSZ	$\# Z > 2$
5	SO4	B	1012	-	4,4,4	0.56	0	6,6,6	0.58	0
5	SO4	B	1013	-	4,4,4	0.49	0	6,6,6	0.65	0
4	NAG	A	901	1	14,14,15	0.62	0	17,19,21	1.03	2 (11%)

Mol	Type	Chain	Res	Link	Bond lengths			Bond angles		
					Counts	RMSZ	# Z > 2	Counts	RMSZ	# Z > 2
4	NAG	B	1008	1	14,14,15	0.89	1 (7%)	17,19,21	1.42	2 (11%)
4	NAG	B	1007	1	14,14,15	0.93	0	17,19,21	1.40	4 (23%)
4	NAG	B	1002	1	14,14,15	0.55	0	17,19,21	2.15	3 (17%)
4	NAG	A	902	1	14,14,15	0.71	0	17,19,21	1.39	2 (11%)
4	NAG	B	1005	1	14,14,15	0.86	0	17,19,21	1.68	7 (41%)
4	NAG	B	1001	1	14,14,15	0.77	0	17,19,21	1.29	2 (11%)
4	NAG	B	1003	1	14,14,15	0.70	0	17,19,21	1.07	0
4	NAG	B	1006	1	14,14,15	0.95	1 (7%)	17,19,21	1.41	2 (11%)
5	SO4	A	907	-	4,4,4	0.49	0	6,6,6	0.68	0
6	EWX	B	1015	-	24,25,25	2.46	9 (37%)	28,34,34	5.63	12 (42%)
5	SO4	B	1011	-	4,4,4	0.44	0	6,6,6	0.80	0
5	SO4	B	1010	-	4,4,4	0.63	0	6,6,6	0.65	0
5	SO4	A	905	-	4,4,4	0.58	0	6,6,6	0.97	0
4	NAG	A	903	1	14,14,15	0.85	0	17,19,21	2.03	4 (23%)
6	EWX	B	1014	-	24,25,25	2.28	2 (8%)	28,34,34	4.45	11 (39%)
5	SO4	B	1009	-	4,4,4	0.61	0	6,6,6	1.20	1 (16%)
5	SO4	A	906	-	4,4,4	0.53	0	6,6,6	0.76	0
5	SO4	A	904	-	4,4,4	0.26	0	6,6,6	0.71	0
4	NAG	B	1004	1	14,14,15	0.73	0	17,19,21	1.52	4 (23%)

In the following table, the Chirals column lists the number of chiral outliers, the number of chiral centers analysed, the number of these observed in the model and the number defined in the Chemical Component Dictionary. Similar counts are reported in the Torsion and Rings columns. '-' means no outliers of that kind were identified.

Mol	Type	Chain	Res	Link	Chirals	Torsions	Rings
6	EWX	B	1015	-	-	3/9/9/9	0/3/3/3
4	NAG	A	901	1	-	2/6/23/26	0/1/1/1
4	NAG	B	1001	1	-	2/6/23/26	0/1/1/1
4	NAG	B	1003	1	-	2/6/23/26	0/1/1/1
4	NAG	B	1008	1	-	1/6/23/26	0/1/1/1
4	NAG	B	1007	1	-	2/6/23/26	0/1/1/1
6	EWX	B	1014	-	-	1/9/9/9	0/3/3/3
4	NAG	B	1002	1	-	2/6/23/26	0/1/1/1
4	NAG	B	1006	1	-	2/6/23/26	0/1/1/1
4	NAG	A	903	1	-	1/6/23/26	0/1/1/1
4	NAG	A	902	1	-	1/6/23/26	0/1/1/1
4	NAG	B	1005	1	-	1/6/23/26	0/1/1/1

Continued on next page...

Continued from previous page...

Mol	Type	Chain	Res	Link	Chirals	Torsions	Rings
4	NAG	B	1004	1	-	0/6/23/26	0/1/1/1

All (13) bond length outliers are listed below:

Mol	Chain	Res	Type	Atoms	Z	Observed(Å)	Ideal(Å)
6	B	1014	EWX	O-C4	8.40	1.38	1.23
6	B	1015	EWX	O-C4	6.98	1.35	1.23
6	B	1014	EWX	O1-C3	5.51	1.40	1.34
6	B	1015	EWX	C4-N3	-5.39	1.34	1.38
6	B	1015	EWX	C3-N1	3.84	1.40	1.33
6	B	1015	EWX	C2-N1	3.51	1.40	1.35
4	B	1006	NAG	C1-C2	2.63	1.56	1.52
6	B	1015	EWX	C1-N3	-2.60	1.34	1.39
6	B	1015	EWX	C-N2	-2.20	1.33	1.38
4	B	1008	NAG	C1-C2	2.17	1.55	1.52
6	B	1015	EWX	C3-N	2.13	1.37	1.33
6	B	1015	EWX	O1-C3	2.13	1.36	1.34
6	B	1015	EWX	C-C2	2.01	1.48	1.40

All (56) bond angle outliers are listed below:

Mol	Chain	Res	Type	Atoms	Z	Observed(°)	Ideal(°)
6	B	1015	EWX	N2-C4-N3	22.51	117.53	106.72
6	B	1014	EWX	N2-C4-N3	15.57	114.20	106.72
6	B	1015	EWX	C-N2-C4	-12.47	104.01	109.81
6	B	1014	EWX	C-N2-C4	-10.79	104.80	109.81
6	B	1015	EWX	O-C4-N3	-9.18	118.57	125.89
6	B	1014	EWX	O-C4-N2	-6.80	121.43	127.50
6	B	1015	EWX	N4-C2-N1	6.10	125.65	117.03
4	B	1002	NAG	O5-C5-C6	5.97	116.56	107.20
4	A	903	NAG	C1-O5-C5	5.94	120.24	112.19
6	B	1014	EWX	C3-N1-C2	5.61	122.81	115.97
6	B	1014	EWX	N-C1-N3	5.20	134.53	125.77
6	B	1014	EWX	C5-O1-C3	4.54	123.81	117.83
6	B	1015	EWX	N-C1-N3	4.27	132.97	125.77
4	B	1008	NAG	C1-O5-C5	4.22	117.91	112.19
4	B	1002	NAG	C1-O5-C5	-4.21	106.49	112.19
6	B	1015	EWX	O-C4-N2	-4.04	123.89	127.50
6	B	1014	EWX	C9-C8-N3	-3.97	106.70	113.39
6	B	1015	EWX	C8-N3-C1	3.88	129.93	125.03
4	B	1006	NAG	C1-O5-C5	3.87	117.43	112.19
6	B	1014	EWX	N1-C3-N	-3.59	120.71	127.63

Continued on next page...

Continued from previous page...

Mol	Chain	Res	Type	Atoms	Z	Observed(°)	Ideal(°)
6	B	1015	EWX	C9-C8-N3	-3.44	107.60	113.39
6	B	1015	EWX	C-C2-N4	-3.39	115.42	123.68
4	B	1002	NAG	C4-C3-C2	3.37	115.95	111.02
6	B	1014	EWX	C8-N3-C4	3.22	128.74	122.78
4	B	1005	NAG	C1-O5-C5	2.86	116.06	112.19
4	B	1004	NAG	C8-C7-N2	-2.76	111.43	116.10
4	B	1005	NAG	O4-C4-C5	2.73	116.08	109.30
4	A	901	NAG	O5-C5-C6	2.68	111.41	107.20
4	A	902	NAG	O5-C5-C6	2.68	111.41	107.20
4	A	903	NAG	O5-C1-C2	2.64	115.45	111.29
4	A	903	NAG	C4-C3-C2	-2.63	107.17	111.02
4	B	1001	NAG	C3-C4-C5	-2.54	105.70	110.24
4	B	1005	NAG	O3-C3-C4	-2.53	104.51	110.35
4	A	903	NAG	O5-C5-C6	2.51	111.15	107.20
4	B	1006	NAG	C2-N2-C7	-2.47	119.38	122.90
6	B	1014	EWX	C10-C9-C13	2.40	120.63	117.10
6	B	1015	EWX	C8-N3-C4	2.38	127.20	122.78
4	B	1007	NAG	O4-C4-C3	2.38	115.85	110.35
4	B	1005	NAG	C6-C5-C4	-2.37	107.46	113.00
6	B	1015	EWX	O1-C3-N1	2.36	123.68	116.13
4	B	1007	NAG	O3-C3-C2	-2.33	104.65	109.47
4	B	1008	NAG	O5-C5-C4	-2.31	105.21	110.83
4	B	1007	NAG	C1-O5-C5	2.28	115.28	112.19
6	B	1014	EWX	N4-C2-N1	2.26	120.22	117.03
5	B	1009	SO4	O3-S-O2	2.25	121.03	109.31
4	B	1001	NAG	C1-C2-N2	-2.21	106.71	110.49
6	B	1015	EWX	C5-O1-C3	2.19	120.72	117.83
4	B	1005	NAG	C4-C3-C2	2.18	114.22	111.02
4	B	1005	NAG	O3-C3-C2	-2.13	105.06	109.47
4	B	1004	NAG	O5-C5-C6	2.12	110.53	107.20
4	B	1004	NAG	C3-C4-C5	-2.12	106.46	110.24
4	B	1004	NAG	C2-N2-C7	2.07	125.86	122.90
4	A	901	NAG	O4-C4-C5	2.05	114.38	109.30
4	A	902	NAG	O5-C1-C2	2.04	114.51	111.29
4	B	1005	NAG	C1-C2-N2	2.03	113.95	110.49
4	B	1007	NAG	C1-C2-N2	2.01	113.92	110.49

There are no chirality outliers.

All (20) torsion outliers are listed below:

Mol	Chain	Res	Type	Atoms
6	B	1015	EWX	N-C3-O1-C5

Continued on next page...

Continued from previous page...

Mol	Chain	Res	Type	Atoms
6	B	1015	EWX	N1-C3-O1-C5
4	B	1007	NAG	C4-C5-C6-O6
4	B	1001	NAG	O5-C5-C6-O6
4	B	1002	NAG	O5-C5-C6-O6
4	B	1007	NAG	O5-C5-C6-O6
4	B	1002	NAG	C4-C5-C6-O6
4	B	1001	NAG	C4-C5-C6-O6
6	B	1015	EWX	O1-C5-C6-O2
4	A	901	NAG	C4-C5-C6-O6
4	B	1003	NAG	C4-C5-C6-O6
6	B	1014	EWX	O1-C5-C6-O2
4	A	901	NAG	O5-C5-C6-O6
4	A	902	NAG	O5-C5-C6-O6
4	B	1005	NAG	C8-C7-N2-C2
4	B	1003	NAG	O5-C5-C6-O6
4	A	903	NAG	C4-C5-C6-O6
4	B	1006	NAG	C4-C5-C6-O6
4	B	1008	NAG	O5-C5-C6-O6
4	B	1006	NAG	O5-C5-C6-O6

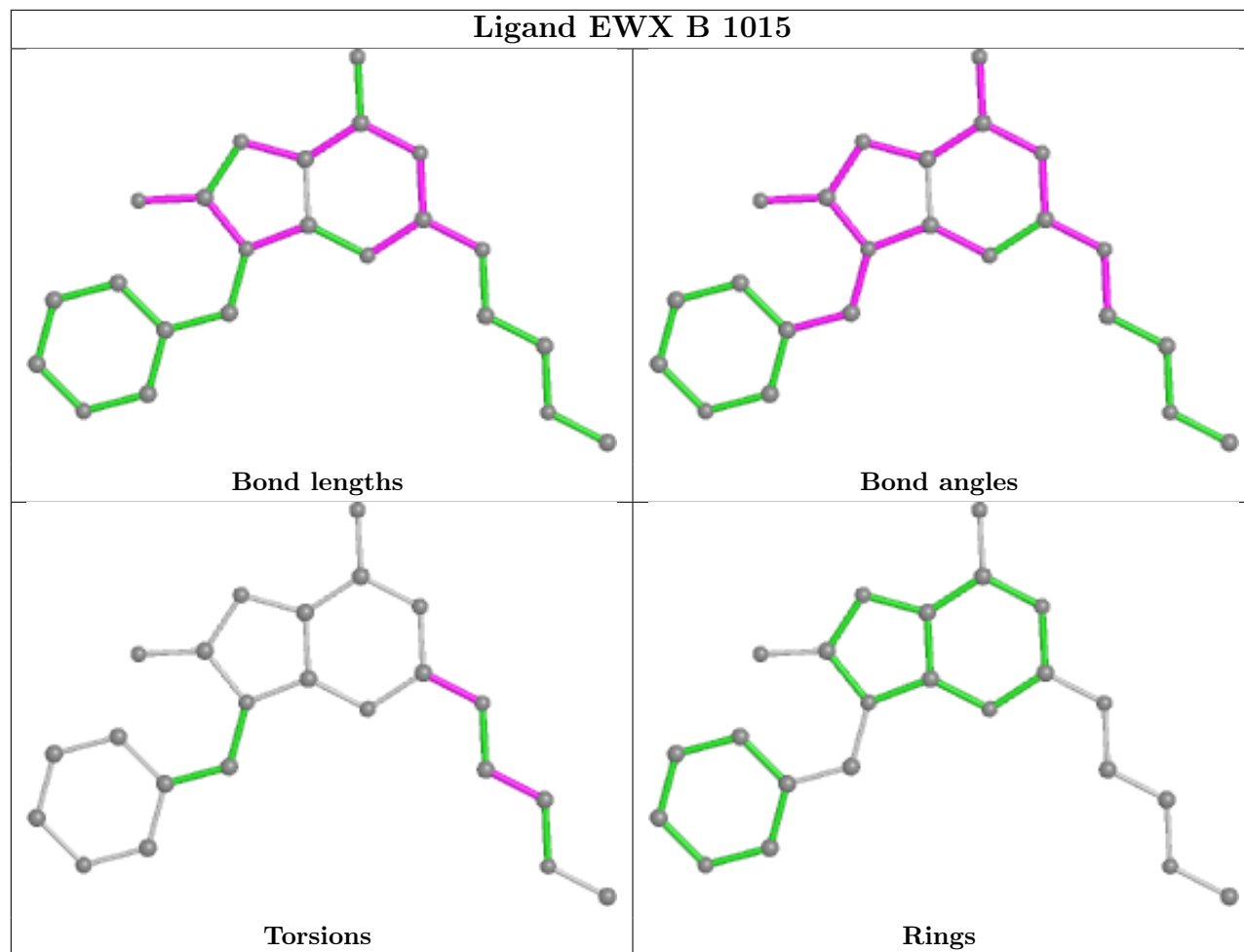
There are no ring outliers.

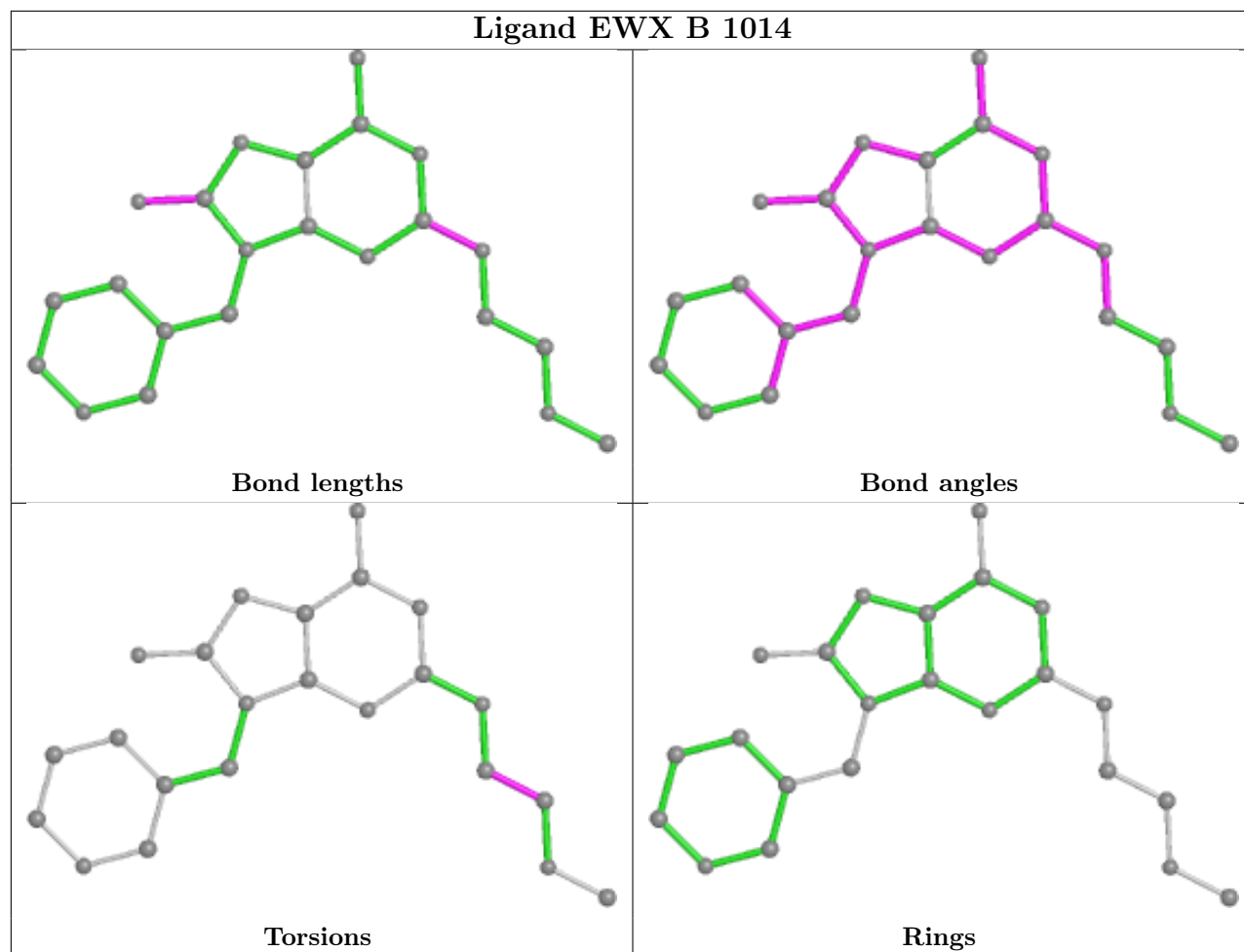
6 monomers are involved in 7 short contacts:

Mol	Chain	Res	Type	Clashes	Symm-Clashes
5	B	1013	SO4	1	0
4	A	901	NAG	1	0
4	B	1002	NAG	1	0
4	A	902	NAG	2	0
4	B	1001	NAG	1	0
6	B	1015	EWX	1	0

The following is a two-dimensional graphical depiction of Mogul quality analysis of bond lengths, bond angles, torsion angles, and ring geometry for all instances of the Ligand of Interest. In addition, ligands with molecular weight > 250 and outliers as shown on the validation Tables will also be included. For torsion angles, if less than 5% of the Mogul distribution of torsion angles is within 10 degrees of the torsion angle in question, then that torsion angle is considered an outlier. Any bond that is central to one or more torsion angles identified as an outlier by Mogul will be highlighted in the graph. For rings, the root-mean-square deviation (RMSD) between the ring in question and similar rings identified by Mogul is calculated over all ring torsion angles. If the average RMSD is greater than 60 degrees and the minimal RMSD between the ring in question and any Mogul-identified rings is also greater than 60 degrees, then that ring is considered an outlier. The outliers are highlighted in purple. The color gray indicates Mogul did not find sufficient

equivalents in the CSD to analyse the geometry.





5.7 Other polymers [i](#)

There are no such residues in this entry.

5.8 Polymer linkage issues [i](#)

There are no chain breaks in this entry.

6 Fit of model and data [i](#)

6.1 Protein, DNA and RNA chains [i](#)

In the following table, the column labelled '#RSRZ > 2' contains the number (and percentage) of RSRZ outliers, followed by percent RSRZ outliers for the chain as percentile scores relative to all X-ray entries and entries of similar resolution. The OWAB column contains the minimum, median, 95th percentile and maximum values of the occupancy-weighted average B-factor per residue. The column labelled 'Q < 0.9' lists the number of (and percentage) of residues with an average occupancy less than 0.9.

Mol	Chain	Analysed	<RSRZ>	#RSRZ>2	OWAB(Å ²)	Q<0.9
1	A	772/823 (93%)	0.00	6 (0%) 86 85	40, 62, 96, 162	0
1	B	772/823 (93%)	-0.17	0 100 100	32, 52, 88, 148	0
All	All	1544/1646 (93%)	-0.08	6 (0%) 92 91	32, 57, 91, 162	0

All (6) RSRZ outliers are listed below:

Mol	Chain	Res	Type	RSRZ
1	A	42	VAL	3.7
1	A	45	ASN	3.6
1	A	46	HIS	2.9
1	A	462	GLN	2.8
1	A	723	ARG	2.6
1	A	40	LEU	2.5

6.2 Non-standard residues in protein, DNA, RNA chains [i](#)

There are no non-standard protein/DNA/RNA residues in this entry.

6.3 Carbohydrates [i](#)

In the following table, the Atoms column lists the number of modelled atoms in the group and the number defined in the chemical component dictionary. The B-factors column lists the minimum, median, 95th percentile and maximum values of B factors of atoms in the group. The column labelled 'Q < 0.9' lists the number of atoms with occupancy less than 0.9.

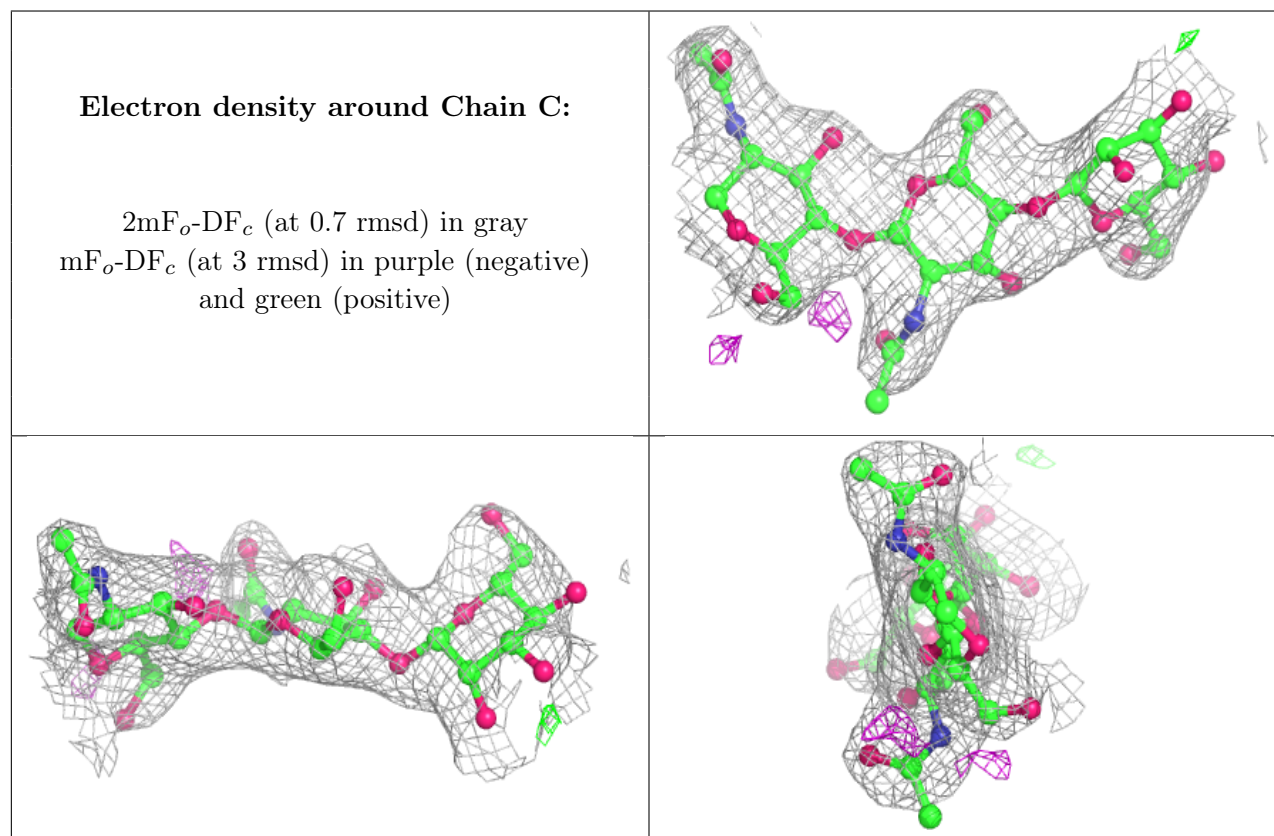
Mol	Type	Chain	Res	Atoms	RSCC	RSR	B-factors(Å ²)	Q<0.9
2	BMA	D	3	11/12	0.77	0.24	100,131,140,154	0
3	NAG	E	2	14/15	0.80	0.31	90,102,114,117	0
2	BMA	C	3	11/12	0.85	0.21	86,105,117,117	0

Continued on next page...

Continued from previous page...

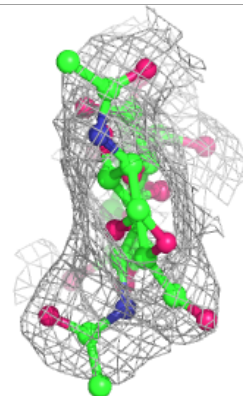
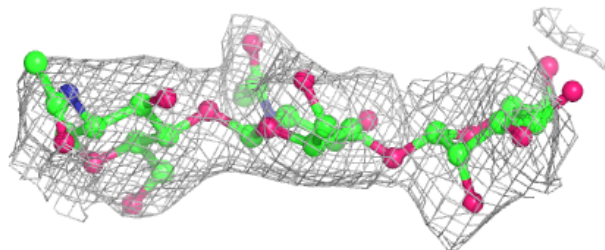
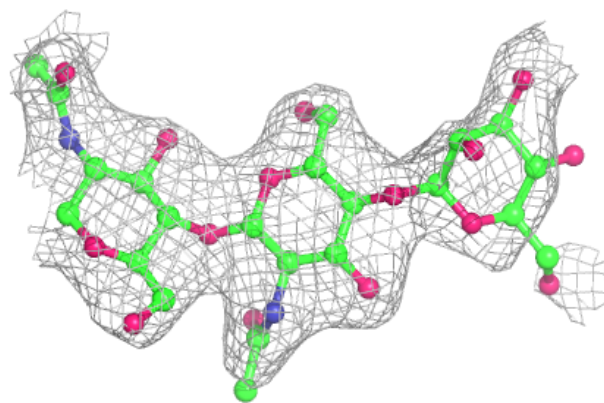
Mol	Type	Chain	Res	Atoms	RSCC	RSR	B-factors(\AA^2)	Q<0.9
2	NAG	C	2	14/15	0.91	0.18	64,83,91,97	0
2	NAG	D	2	14/15	0.95	0.13	64,81,88,117	0
3	NAG	E	1	14/15	0.96	0.16	66,75,82,86	0
2	NAG	C	1	14/15	0.97	0.16	49,54,61,63	0
2	NAG	D	1	14/15	0.97	0.15	51,57,66,68	0

The following is a graphical depiction of the model fit to experimental electron density for oligosaccharide. Each fit is shown from different orientation to approximate a three-dimensional view.

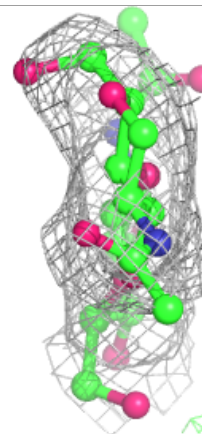
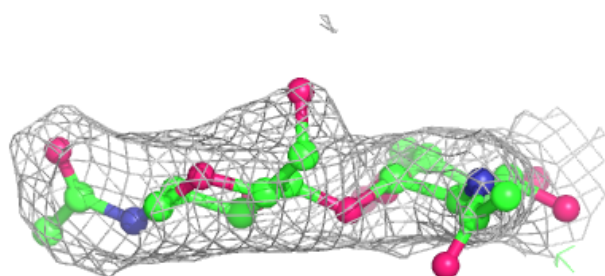
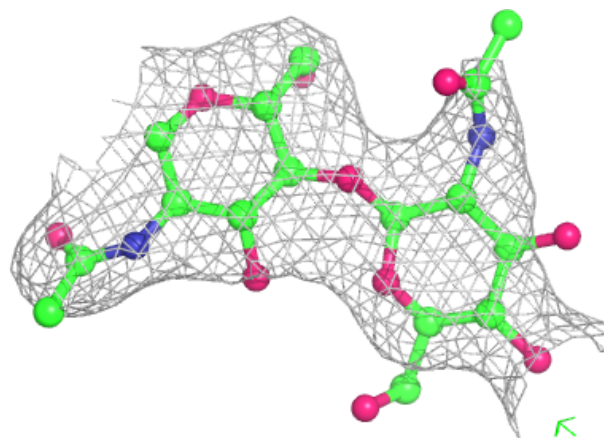


Electron density around Chain D:

$2mF_o-DF_c$ (at 0.7 rmsd) in gray
 mF_o-DF_c (at 3 rmsd) in purple (negative)
and green (positive)

**Electron density around Chain E:**

$2mF_o-DF_c$ (at 0.7 rmsd) in gray
 mF_o-DF_c (at 3 rmsd) in purple (negative)
and green (positive)



6.4 Ligands

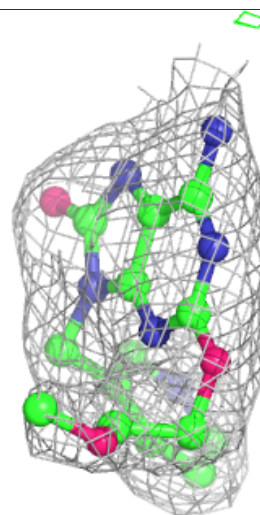
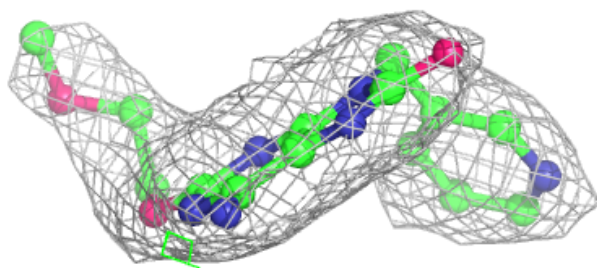
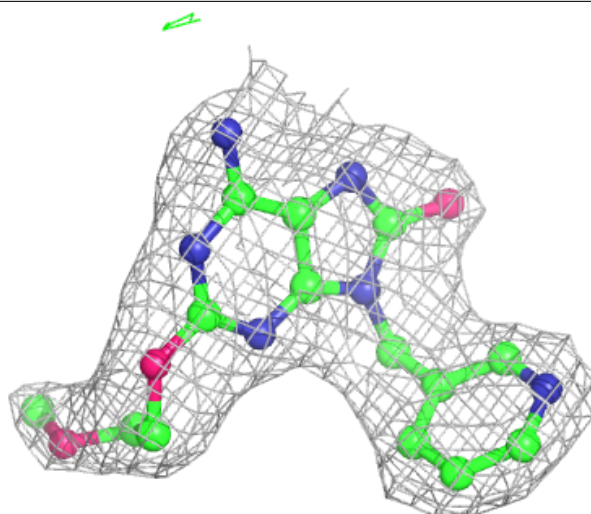
In the following table, the Atoms column lists the number of modelled atoms in the group and the number defined in the chemical component dictionary. The B-factors column lists the minimum, median, 95th percentile and maximum values of B factors of atoms in the group. The column labelled 'Q< 0.9' lists the number of atoms with occupancy less than 0.9.

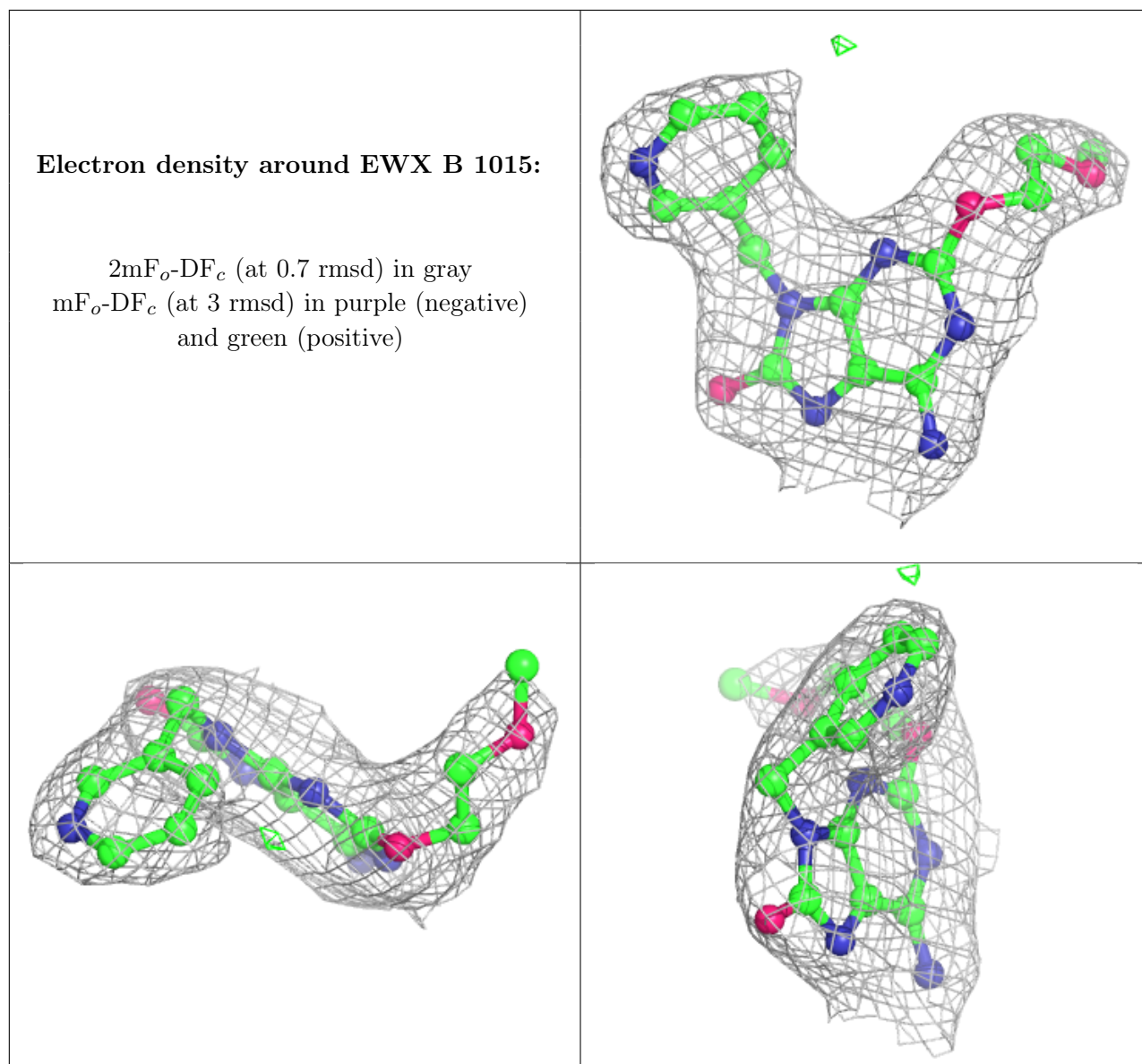
Mol	Type	Chain	Res	Atoms	RSCC	RSR	B-factors(\AA^2)	Q<0.9
5	SO4	A	906	5/5	0.73	0.31	90,100,121,121	0
5	SO4	A	907	5/5	0.86	0.31	103,107,113,113	0
5	SO4	B	1013	5/5	0.87	0.38	93,100,114,124	0
4	NAG	B	1007	14/15	0.87	0.28	70,91,95,95	0
5	SO4	B	1010	5/5	0.87	0.25	88,94,107,116	0
5	SO4	B	1012	5/5	0.88	0.17	83,89,102,111	0
5	SO4	B	1011	5/5	0.88	0.24	88,103,111,112	0
5	SO4	A	905	5/5	0.89	0.36	76,98,101,108	0
4	NAG	A	903	14/15	0.91	0.21	84,92,101,103	0
4	NAG	B	1005	14/15	0.91	0.18	60,72,78,84	0
5	SO4	B	1009	5/5	0.93	0.16	73,77,88,92	0
4	NAG	B	1001	14/15	0.93	0.16	43,49,51,52	0
4	NAG	A	901	14/15	0.94	0.14	49,57,66,69	0
4	NAG	B	1003	14/15	0.94	0.15	78,90,99,102	0
4	NAG	B	1006	14/15	0.94	0.17	63,73,79,80	0
4	NAG	B	1004	14/15	0.94	0.14	56,68,79,84	0
4	NAG	B	1008	14/15	0.94	0.16	73,78,88,93	0
4	NAG	B	1002	14/15	0.95	0.19	55,66,81,93	0
4	NAG	A	902	14/15	0.95	0.11	62,75,79,81	0
5	SO4	A	904	5/5	0.95	0.16	83,95,100,101	0
6	EWX	B	1014	23/23	0.97	0.16	41,45,52,58	0
6	EWX	B	1015	23/23	0.97	0.16	45,51,58,70	0

The following is a graphical depiction of the model fit to experimental electron density of all instances of the Ligand of Interest. In addition, ligands with molecular weight > 250 and outliers as shown on the geometry validation Tables will also be included. Each fit is shown from different orientation to approximate a three-dimensional view.

Electron density around EWX B 1014:

$2mF_o-DF_c$ (at 0.7 rmsd) in gray
 mF_o-DF_c (at 3 rmsd) in purple (negative)
and green (positive)





6.5 Other polymers [i](#)

There are no such residues in this entry.