



Full wwPDB X-ray Structure Validation Report ⓘ

Aug 10, 2020 – 02:29 AM BST

PDB ID : 6LQ7
Title : Crystal Structure of E447A Acyl-CoA Dehydrogenase FadE5 mutant from Mycobacteria smegmatis in complex with C17CoA
Authors : Liu, X.; Chen, X.B.
Deposited on : 2020-01-13
Resolution : 1.90 Å(reported)

This is a Full wwPDB X-ray Structure Validation Report for a publicly released PDB entry.

We welcome your comments at validation@mail.wwpdb.org

A user guide is available at

<https://www.wwpdb.org/validation/2017/XrayValidationReportHelp>

with specific help available everywhere you see the ⓘ symbol.

The following versions of software and data (see [references ⓘ](#)) were used in the production of this report:

MolProbity : 4.02b-467
Mogul : 1.8.5 (274361), CSD as541be (2020)
Xtriage (Phenix) : 1.13
EDS : 2.13.1
buster-report : 1.1.7 (2018)
Percentile statistics : 20191225.v01 (using entries in the PDB archive December 25th 2019)
Refmac : 5.8.0158
CCP4 : 7.0.044 (Gargrove)
Ideal geometry (proteins) : Engh & Huber (2001)
Ideal geometry (DNA, RNA) : Parkinson et al. (1996)
Validation Pipeline (wwPDB-VP) : 2.13.1

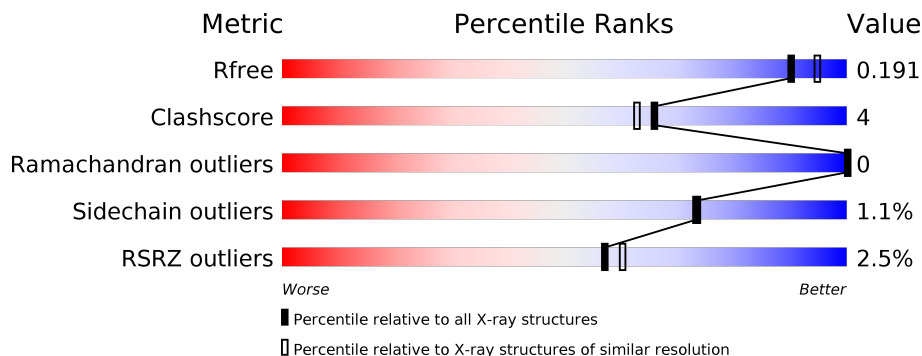
1 Overall quality at a glance

The following experimental techniques were used to determine the structure:

X-RAY DIFFRACTION

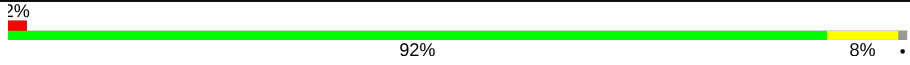
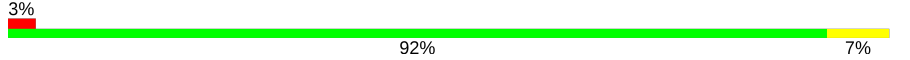
The reported resolution of this entry is 1.90 Å.

Percentile scores (ranging between 0-100) for global validation metrics of the entry are shown in the following graphic. The table shows the number of entries on which the scores are based.



Metric	Whole archive (#Entries)	Similar resolution (#Entries, resolution range(Å))
R_{free}	130704	6207 (1.90-1.90)
Clashscore	141614	6847 (1.90-1.90)
Ramachandran outliers	138981	6760 (1.90-1.90)
Sidechain outliers	138945	6760 (1.90-1.90)
RSRZ outliers	127900	6082 (1.90-1.90)

The table below summarises the geometric issues observed across the polymeric chains and their fit to the electron density. The red, orange, yellow and green segments on the lower bar indicate the fraction of residues that contain outliers for ≥ 3 , 2, 1 and 0 types of geometric quality criteria respectively. A grey segment represents the fraction of residues that are not modelled. The numeric value for each fraction is indicated below the corresponding segment, with a dot representing fractions $\leq 5\%$. The upper red bar (where present) indicates the fraction of residues that have poor fit to the electron density. The numeric value is given above the bar.

Mol	Chain	Length	Quality of chain
1	A	612	
1	B	612	

2 Entry composition i

There are 5 unique types of molecules in this entry. The entry contains 20200 atoms, of which 9358 are hydrogens and 0 are deuteriums.

In the tables below, the ZeroOcc column contains the number of atoms modelled with zero occupancy, the AltConf column contains the number of residues with at least one atom in alternate conformation and the Trace column contains the number of residues modelled with at most 2 atoms.

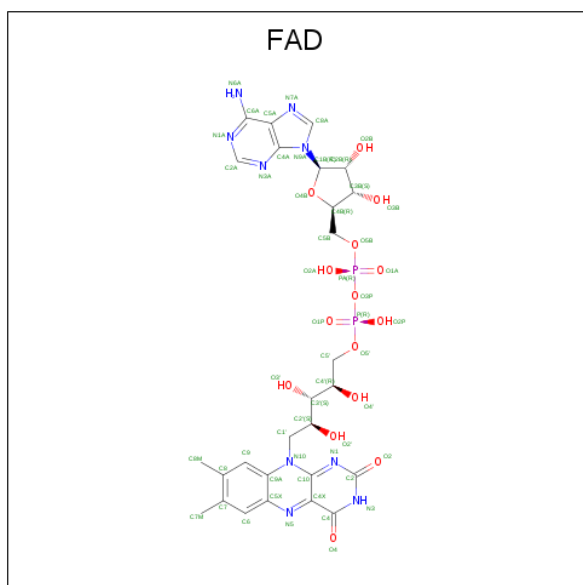
- Molecule 1 is a protein called Acyl-CoA dehydrogenase.

Mol	Chain	Residues	Atoms					ZeroOcc	AltConf	Trace	
			Total	C	H	N	O				S
1	A	607	9231	2949	4581	790	889	22	0	0	0
1	B	609	9259	2956	4595	793	893	22	0	0	0

There are 4 discrepancies between the modelled and reference sequences:

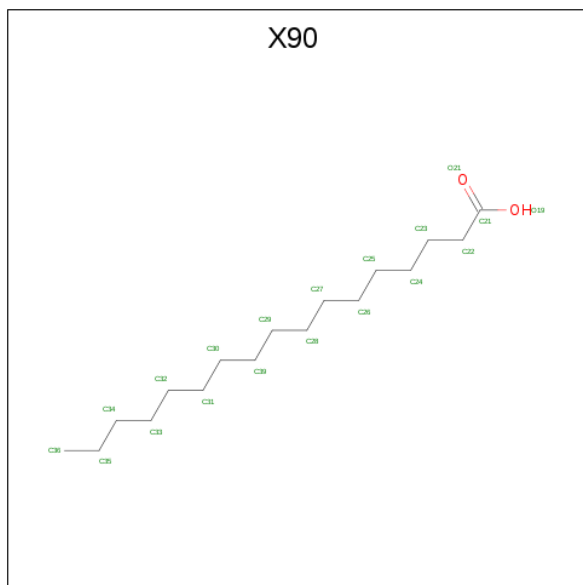
Chain	Residue	Modelled	Actual	Comment	Reference
A	0	SER	-	expression tag	UNP A0A0D6G5A8
A	447	ALA	GLU	engineered mutation	UNP A0A0D6G5A8
B	0	SER	-	expression tag	UNP A0A0D6G5A8
B	447	ALA	GLU	engineered mutation	UNP A0A0D6G5A8

- Molecule 2 is FLAVIN-ADENINE DINUCLEOTIDE (three-letter code: FAD) (formula: $C_{27}H_{33}N_9O_{15}P_2$) (labeled as "Ligand of Interest" by author).



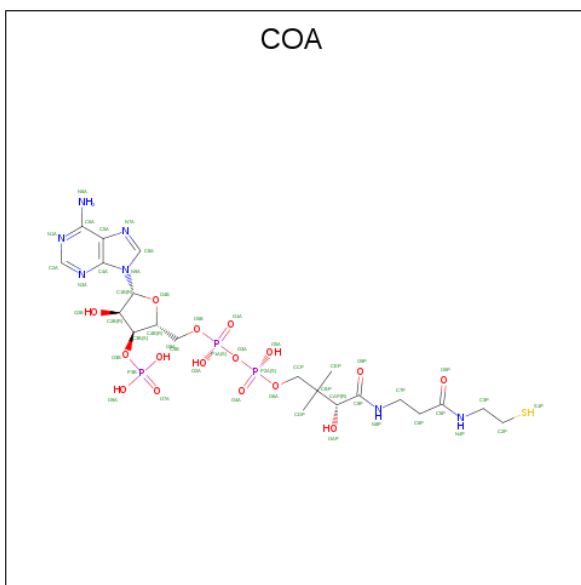
Mol	Chain	Residues	Atoms					ZeroOcc	AltConf	
			Total	C	H	N	O			P
2	A	1	84	27	31	9	15	2	0	0
2	B	1	84	27	31	9	15	2	0	0

- Molecule 3 is heptadecanoic acid (three-letter code: X90) (formula: $C_{17}H_{34}O_2$).



Mol	Chain	Residues	Atoms			ZeroOcc	AltConf	
			Total	C	H			O
3	A	1	50	17	32	1	0	0
3	B	1	50	17	32	1	0	0

- Molecule 4 is COENZYME A (three-letter code: COA) (formula: $C_{21}H_{36}N_7O_{16}P_3S$).



Mol	Chain	Residues	Atoms							ZeroOcc	AltConf
			Total	C	H	N	O	P	S		
4	A	1	76	21	28	7	16	3	1	0	0
4	B	1	76	21	28	7	16	3	1	0	0

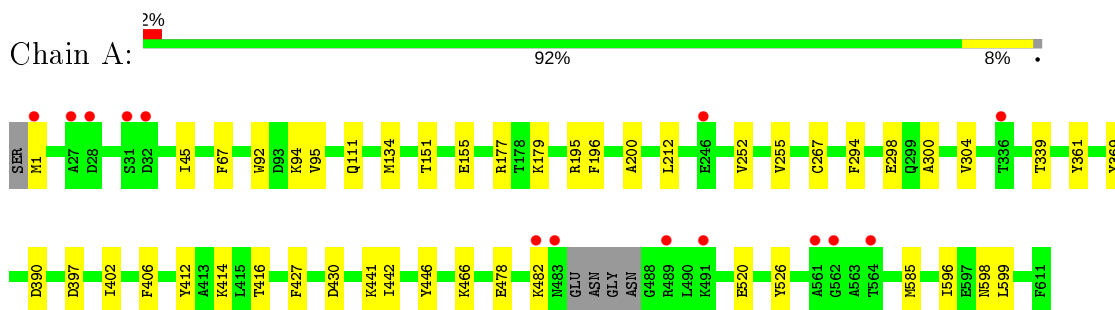
- Molecule 5 is water.

Mol	Chain	Residues	Atoms		ZeroOcc	AltConf
5	A	637	Total	O	0	0
			637	637		
5	B	653	Total	O	0	0
			653	653		

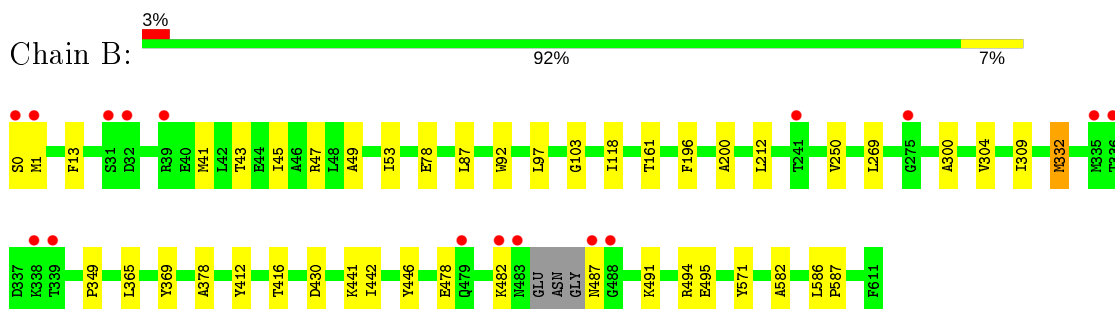
3 Residue-property plots [i](#)

These plots are drawn for all protein, RNA, DNA and oligosaccharide chains in the entry. The first graphic for a chain summarises the proportions of the various outlier classes displayed in the second graphic. The second graphic shows the sequence view annotated by issues in geometry and electron density. Residues are color-coded according to the number of geometric quality criteria for which they contain at least one outlier: green = 0, yellow = 1, orange = 2 and red = 3 or more. A red dot above a residue indicates a poor fit to the electron density ($RSRZ > 2$). Stretches of 2 or more consecutive residues without any outlier are shown as a green connector. Residues present in the sample, but not in the model, are shown in grey.

- Molecule 1: Acyl-CoA dehydrogenase



- Molecule 1: Acyl-CoA dehydrogenase



4 Data and refinement statistics

Property	Value	Source
Space group	P 21 21 2	Depositor
Cell constants a, b, c, α , β , γ	98.07Å 206.77Å 74.02Å 90.00° 90.00° 90.00°	Depositor
Resolution (Å)	19.66 – 1.90 19.66 – 1.90	Depositor EDS
% Data completeness (in resolution range)	94.7 (19.66-1.90) 94.7 (19.66-1.90)	Depositor EDS
R_{merge}	0.15	Depositor
R_{sym}	(Not available)	Depositor
$\langle I/\sigma(I) \rangle$ ¹	1.47 (at 1.90Å)	Xtrriage
Refinement program	PHENIX 1.14_3260	Depositor
R, R_{free}	0.150 , 0.191 0.151 , 0.191	Depositor DCC
R_{free} test set	5585 reflections (4.95%)	wwPDB-VP
Wilson B-factor (Å ²)	22.6	Xtrriage
Anisotropy	0.546	Xtrriage
Bulk solvent k_{sol} (e/Å ³), B_{sol} (Å ²)	0.43 , 55.5	EDS
L-test for twinning ²	$\langle L \rangle = 0.50$, $\langle L^2 \rangle = 0.33$	Xtrriage
Estimated twinning fraction	No twinning to report.	Xtrriage
F_o, F_c correlation	0.97	EDS
Total number of atoms	20200	wwPDB-VP
Average B, all atoms (Å ²)	25.0	wwPDB-VP

Xtrriage's analysis on translational NCS is as follows: *The largest off-origin peak in the Patterson function is 3.51% of the height of the origin peak. No significant pseudotranslation is detected.*

¹Intensities estimated from amplitudes.

²Theoretical values of $\langle |L| \rangle$, $\langle L^2 \rangle$ for acentric reflections are 0.5, 0.333 respectively for untwinned datasets, and 0.375, 0.2 for perfectly twinned datasets.

5 Model quality [i](#)

5.1 Standard geometry [i](#)

Bond lengths and bond angles in the following residue types are not validated in this section: X90, COA, FAD

The Z score for a bond length (or angle) is the number of standard deviations the observed value is removed from the expected value. A bond length (or angle) with $|Z| > 5$ is considered an outlier worth inspection. RMSZ is the root-mean-square of all Z scores of the bond lengths (or angles).

Mol	Chain	Bond lengths		Bond angles	
		RMSZ	# Z >5	RMSZ	# Z >5
1	A	0.50	0/4742	0.61	0/6415
1	B	0.52	1/4756 (0.0%)	0.63	1/6434 (0.0%)
All	All	0.51	1/9498 (0.0%)	0.62	1/12849 (0.0%)

All (1) bond length outliers are listed below:

Mol	Chain	Res	Type	Atoms	Z	Observed(Å)	Ideal(Å)
1	B	332	MET	SD-CE	-5.25	1.48	1.77

All (1) bond angle outliers are listed below:

Mol	Chain	Res	Type	Atoms	Z	Observed(°)	Ideal(°)
1	B	41	MET	CG-SD-CE	5.39	108.82	100.20

There are no chirality outliers.

There are no planarity outliers.

5.2 Too-close contacts [i](#)

In the following table, the Non-H and H(model) columns list the number of non-hydrogen atoms and hydrogen atoms in the chain respectively. The H(added) column lists the number of hydrogen atoms added and optimized by MolProbity. The Clashes column lists the number of clashes within the asymmetric unit, whereas Symm-Clashes lists symmetry related clashes.

Mol	Chain	Non-H	H(model)	H(added)	Clashes	Symm-Clashes
1	A	4650	4581	4583	38	0
1	B	4664	4595	4594	34	0
2	A	53	31	31	6	0
2	B	53	31	31	8	0

Continued on next page...

Continued from previous page...

Mol	Chain	Non-H	H(model)	H(added)	Clashes	Symm-Clashes
3	A	18	32	0	0	0
3	B	18	32	0	0	0
4	A	48	28	30	2	0
4	B	48	28	30	3	0
5	A	637	0	0	12	0
5	B	653	0	0	8	0
All	All	10842	9358	9299	76	0

The all-atom clashscore is defined as the number of clashes found per 1000 atoms (including hydrogen atoms). The all-atom clashscore for this structure is 4.

All (76) close contacts within the same asymmetric unit are listed below, sorted by their clash magnitude.

Atom-1	Atom-2	Interatomic distance (Å)	Clash overlap (Å)
4:B:703:COA:C1B	4:B:703:COA:O4B	1.63	1.16
4:A:703:COA:O4B	4:A:703:COA:C1B	1.64	1.16
1:B:442:ILE:HD11	2:B:701:FAD:HM83	1.41	1.02
1:A:442:ILE:HD11	2:A:701:FAD:HM83	1.43	0.99
1:B:442:ILE:CD1	2:B:701:FAD:HM83	1.94	0.97
1:A:134:MET:SD	1:A:212:LEU:HD12	2.06	0.96
1:A:442:ILE:CD1	2:A:701:FAD:HM83	1.97	0.95
1:B:378:ALA:N	5:B:802:HOH:O	2.14	0.81
1:A:1:MET:O	5:A:801:HOH:O	2.07	0.72
1:A:466:LYS:HE2	5:A:938:HOH:O	1.90	0.71
1:A:339:THR:OG1	5:A:802:HOH:O	2.10	0.69
1:B:78:GLU:OE1	5:B:801:HOH:O	2.10	0.67
1:A:520:GLU:OE2	5:A:803:HOH:O	2.12	0.66
1:A:1:MET:SD	5:A:1430:HOH:O	2.53	0.65
1:A:298:GLU:OE1	5:A:804:HOH:O	2.13	0.65
1:A:195:ARG:NH2	5:A:810:HOH:O	2.30	0.64
1:B:494:ARG:NH2	5:B:804:HOH:O	2.28	0.64
1:A:466:LYS:HD2	1:A:466:LYS:N	2.16	0.61
1:B:47:ARG:NH1	5:B:806:HOH:O	2.30	0.60
1:B:13:PHE:CD1	5:B:1254:HOH:O	2.51	0.60
1:B:442:ILE:HD13	2:B:701:FAD:HM83	1.82	0.59
1:A:196:PHE:O	2:A:701:FAD:C4X	2.53	0.57
1:A:598:ASN:ND2	5:A:815:HOH:O	2.37	0.57
1:B:0:SER:N	5:B:810:HOH:O	2.37	0.56
1:A:441:LYS:HE2	1:B:416:THR:HG23	1.87	0.55
1:A:134:MET:SD	1:A:212:LEU:CD1	2.90	0.55
1:B:571:TYR:CE1	5:B:1254:HOH:O	2.54	0.54

Continued on next page...

Continued from previous page...

Atom-1	Atom-2	Interatomic distance (Å)	Clash overlap (Å)
1:A:179:LYS:NZ	5:A:819:HOH:O	2.41	0.53
1:A:412:TYR:CE1	1:A:441:LYS:HD2	2.43	0.53
1:B:478:GLU:OE2	1:B:482:LYS:HE2	2.09	0.52
1:A:252:VAL:HG13	1:A:267:CYS:HB3	1.90	0.52
1:B:45:ILE:HD12	1:B:92:TRP:CE3	2.45	0.52
1:A:442:ILE:HD13	2:A:701:FAD:HM83	1.85	0.51
4:A:703:COA:O4B	4:A:703:COA:N9A	2.40	0.49
1:A:397:ASP:OD2	5:A:805:HOH:O	2.19	0.49
1:B:196:PHE:O	2:B:701:FAD:C4X	2.61	0.49
1:A:92:TRP:O	1:A:95:VAL:HG23	2.14	0.48
1:A:151:THR:O	1:A:155:GLU:HG3	2.13	0.48
1:A:390:ASP:OD2	5:A:806:HOH:O	2.20	0.47
1:B:412:TYR:CE1	1:B:441:LYS:HD2	2.49	0.47
1:A:442:ILE:HD11	2:A:701:FAD:C8M	2.31	0.47
1:A:478:GLU:HG3	1:A:482:LYS:HE3	1.96	0.47
1:A:67:PHE:HB2	1:A:255:VAL:HG23	1.97	0.46
1:B:309:ILE:HG12	1:B:365:LEU:HB3	1.98	0.46
1:B:87:LEU:HD11	1:B:118:ILE:HD13	1.98	0.45
2:B:701:FAD:C2	4:B:703:COA:S1P	3.05	0.45
2:B:701:FAD:H2'	2:B:701:FAD:C9	2.47	0.45
1:A:361:TYR:CE2	1:A:414:LYS:HE3	2.52	0.45
1:A:95:VAL:HG12	1:A:111:GLN:HG3	1.99	0.44
1:B:212:LEU:HD21	5:B:1423:HOH:O	2.16	0.44
4:B:703:COA:N9A	4:B:703:COA:O4B	2.40	0.43
1:A:200:ALA:HB3	1:A:267:CYS:HB2	2.01	0.43
1:B:161:THR:HG21	1:B:200:ALA:HA	1.99	0.43
1:B:442:ILE:HD11	2:B:701:FAD:C8M	2.28	0.43
1:A:466:LYS:HD2	1:A:466:LYS:H	1.83	0.43
1:B:300:ALA:O	1:B:304:VAL:HG23	2.19	0.43
2:B:701:FAD:H9	2:B:701:FAD:H2'	2.00	0.42
1:A:526:TYR:HA	1:B:332:MET:CE	2.49	0.42
1:A:45:ILE:HD12	1:A:92:TRP:CE3	2.55	0.42
1:B:45:ILE:HD11	1:B:118:ILE:HD11	2.01	0.42
1:A:427:PHE:CZ	1:B:442:ILE:HB	2.55	0.42
1:A:402:ILE:O	1:A:406:PHE:HB3	2.20	0.42
2:A:701:FAD:C9	2:A:701:FAD:H2'	2.49	0.42
1:B:487:ASN:O	1:B:487:ASN:OD1	2.38	0.42
1:B:491:LYS:NZ	1:B:495:GLU:OE2	2.52	0.41
1:A:596:ILE:HA	1:A:599:LEU:HG	2.01	0.41
1:A:416:THR:HG23	1:B:441:LYS:HE2	2.02	0.41
1:B:250:VAL:HG22	1:B:269:LEU:HD11	2.02	0.41

Continued on next page...

Continued from previous page...

Atom-1	Atom-2	Interatomic distance (Å)	Clash overlap (Å)
1:B:332:MET:HE2	1:B:349:PRO:HG2	2.02	0.41
1:B:49:ALA:HA	1:B:53:ILE:HB	2.02	0.41
1:B:582:ALA:O	1:B:587:PRO:HD3	2.21	0.41
1:B:97:LEU:O	1:B:103:GLY:HA3	2.20	0.41
1:B:586:LEU:N	1:B:587:PRO:CD	2.85	0.40
1:A:300:ALA:O	1:A:304:VAL:HG23	2.21	0.40
1:A:177:ARG:NH1	5:A:826:HOH:O	2.45	0.40
1:B:43:THR:O	1:B:47:ARG:HG2	2.21	0.40

There are no symmetry-related clashes.

5.3 Torsion angles [i](#)

5.3.1 Protein backbone [i](#)

In the following table, the Percentiles column shows the percent Ramachandran outliers of the chain as a percentile score with respect to all X-ray entries followed by that with respect to entries of similar resolution.

The Analysed column shows the number of residues for which the backbone conformation was analysed, and the total number of residues.

Mol	Chain	Analysed	Favoured	Allowed	Outliers	Percentiles	
1	A	603/612 (98%)	593 (98%)	10 (2%)	0	100	100
1	B	605/612 (99%)	594 (98%)	11 (2%)	0	100	100
All	All	1208/1224 (99%)	1187 (98%)	21 (2%)	0	100	100

There are no Ramachandran outliers to report.

5.3.2 Protein sidechains [i](#)

In the following table, the Percentiles column shows the percent sidechain outliers of the chain as a percentile score with respect to all X-ray entries followed by that with respect to entries of similar resolution.

The Analysed column shows the number of residues for which the sidechain conformation was analysed, and the total number of residues.

Mol	Chain	Analysed	Rotameric	Outliers	Percentiles	
1	A	475/479 (99%)	469 (99%)	6 (1%)	69	68

Continued on next page...

Continued from previous page...

Mol	Chain	Analysed	Rotameric	Outliers	Percentiles	
1	B	477/479 (100%)	473 (99%)	4 (1%)	81	82
All	All	952/958 (99%)	942 (99%)	10 (1%)	73	73

All (10) residues with a non-rotameric sidechain are listed below:

Mol	Chain	Res	Type
1	A	94	LYS
1	A	294	PHE
1	A	369	TYR
1	A	430	ASP
1	A	446	TYR
1	A	585	MET
1	B	1	MET
1	B	369	TYR
1	B	430	ASP
1	B	446	TYR

Some sidechains can be flipped to improve hydrogen bonding and reduce clashes. All (2) such sidechains are listed below:

Mol	Chain	Res	Type
1	B	505	GLN
1	B	519	GLN

5.3.3 RNA [i](#)

There are no RNA molecules in this entry.

5.4 Non-standard residues in protein, DNA, RNA chains [i](#)

There are no non-standard protein/DNA/RNA residues in this entry.

5.5 Carbohydrates [i](#)

There are no monosaccharides in this entry.

5.6 Ligand geometry [i](#)

6 ligands are modelled in this entry.

In the following table, the Counts columns list the number of bonds (or angles) for which Mogul statistics could be retrieved, the number of bonds (or angles) that are observed in the model and the number of bonds (or angles) that are defined in the Chemical Component Dictionary. The Link column lists molecule types, if any, to which the group is linked. The Z score for a bond length (or angle) is the number of standard deviations the observed value is removed from the expected value. A bond length (or angle) with $|Z| > 2$ is considered an outlier worth inspection. RMSZ is the root-mean-square of all Z scores of the bond lengths (or angles).

Mol	Type	Chain	Res	Link	Bond lengths			Bond angles		
					Counts	RMSZ	# Z > 2	Counts	RMSZ	# Z > 2
2	FAD	B	701	-	51,58,58	1.20	4 (7%)	60,89,89	2.17	8 (13%)
4	COA	B	703	3	41,50,50	4.23	12 (29%)	52,75,75	1.77	8 (15%)
2	FAD	A	701	-	51,58,58	1.18	4 (7%)	60,89,89	2.18	8 (13%)
4	COA	A	703	3	41,50,50	4.20	12 (29%)	52,75,75	1.75	8 (15%)
3	X90	A	702	4	17,17,18	1.30	1 (5%)	16,16,18	1.07	1 (6%)
3	X90	B	702	4	17,17,18	1.25	1 (5%)	16,16,18	1.08	1 (6%)

In the following table, the Chirals column lists the number of chiral outliers, the number of chiral centers analysed, the number of these observed in the model and the number defined in the Chemical Component Dictionary. Similar counts are reported in the Torsion and Rings columns. '-' means no outliers of that kind were identified.

Mol	Type	Chain	Res	Link	Chirals	Torsions	Rings
2	FAD	B	701	-	-	6/30/50/50	0/6/6/6
4	COA	B	703	3	-	1/44/64/64	0/3/3/3
2	FAD	A	701	-	-	4/30/50/50	0/6/6/6
4	COA	A	703	3	-	3/44/64/64	0/3/3/3
3	X90	A	702	4	-	9/15/15/16	-
3	X90	B	702	4	-	9/15/15/16	-

All (34) bond length outliers are listed below:

Mol	Chain	Res	Type	Atoms	Z	Observed(Å)	Ideal(Å)
4	A	703	COA	O4B-C1B	16.52	1.64	1.41
4	B	703	COA	C2B-C1B	-16.38	1.28	1.53
4	B	703	COA	O4B-C1B	16.30	1.63	1.41
4	A	703	COA	C2B-C1B	-15.52	1.30	1.53
4	A	703	COA	O4B-C4B	-6.79	1.29	1.45
4	B	703	COA	O4B-C4B	-6.16	1.31	1.45
4	A	703	COA	C5P-N4P	5.90	1.46	1.33
4	B	703	COA	C5P-N4P	5.86	1.46	1.33
4	A	703	COA	C9P-N8P	5.84	1.46	1.33

Continued on next page...

Continued from previous page...

Mol	Chain	Res	Type	Atoms	Z	Observed(Å)	Ideal(Å)
2	B	701	FAD	C4X-C10	5.50	1.44	1.38
4	B	703	COA	C9P-N8P	5.21	1.45	1.33
2	A	701	FAD	C4X-C10	4.74	1.43	1.38
4	B	703	COA	O2B-C2B	4.51	1.53	1.43
4	A	703	COA	O2B-C2B	4.41	1.53	1.43
3	A	702	X90	O19-C21	-4.31	1.19	1.42
3	B	702	X90	O19-C21	-4.17	1.20	1.42
4	B	703	COA	P3B-O3B	3.76	1.66	1.59
2	A	701	FAD	C4-N3	3.72	1.39	1.33
4	A	703	COA	P3B-O3B	3.69	1.66	1.59
2	B	701	FAD	C4-N3	3.49	1.39	1.33
4	A	703	COA	C6A-N6A	3.05	1.45	1.34
4	B	703	COA	C6A-N6A	3.00	1.45	1.34
2	B	701	FAD	C9A-N10	2.70	1.42	1.38
4	A	703	COA	C5A-C4A	-2.58	1.34	1.40
2	A	701	FAD	C4-C4X	2.56	1.45	1.41
4	B	703	COA	C2A-N3A	2.43	1.36	1.32
2	A	701	FAD	C9A-N10	2.42	1.41	1.38
4	B	703	COA	C5A-C4A	-2.35	1.34	1.40
2	B	701	FAD	C4-C4X	2.20	1.45	1.41
4	A	703	COA	C2A-N3A	2.17	1.35	1.32
4	A	703	COA	O5P-C5P	-2.13	1.18	1.23
4	B	703	COA	C4A-N3A	-2.11	1.32	1.35
4	B	703	COA	C6P-C5P	2.06	1.55	1.51
4	A	703	COA	O3B-C3B	-2.06	1.36	1.44

All (34) bond angle outliers are listed below:

Mol	Chain	Res	Type	Atoms	Z	Observed(°)	Ideal(°)
2	A	701	FAD	C4-N3-C2	12.42	125.63	115.14
2	B	701	FAD	C4-N3-C2	12.03	125.30	115.14
4	B	703	COA	C5A-C6A-N6A	7.27	131.41	120.35
2	B	701	FAD	C4X-C4-N3	-6.93	113.96	123.43
2	A	701	FAD	C4X-C4-N3	-6.76	114.19	123.43
4	A	703	COA	C5A-C6A-N6A	5.97	129.42	120.35
4	A	703	COA	N3A-C2A-N1A	-5.54	120.02	128.68
4	B	703	COA	N3A-C2A-N1A	-4.63	121.44	128.68
4	B	703	COA	N6A-C6A-N1A	-4.59	109.05	118.57
2	B	701	FAD	C10-C4X-N5	4.54	124.39	121.26
2	A	701	FAD	C10-C4X-N5	4.47	124.35	121.26
4	A	703	COA	N6A-C6A-N1A	-3.99	110.29	118.57
2	A	701	FAD	C4-C4X-C10	-3.70	117.50	119.95

Continued on next page...

Continued from previous page...

Mol	Chain	Res	Type	Atoms	Z	Observed(°)	Ideal(°)
4	A	703	COA	C3B-C2B-C1B	3.66	108.00	99.89
2	B	701	FAD	C4X-C10-N10	-3.62	116.58	120.30
2	A	701	FAD	C4X-C10-N10	-3.59	116.61	120.30
4	A	703	COA	C6P-C7P-N8P	-3.54	104.75	111.90
2	B	701	FAD	C1'-N10-C9A	3.46	121.02	118.29
2	B	701	FAD	C4-C4X-C10	-3.37	117.72	119.95
4	B	703	COA	C3B-C2B-C1B	3.36	107.32	99.89
2	A	701	FAD	C1'-N10-C9A	3.27	120.87	118.29
4	B	703	COA	C6P-C7P-N8P	-2.57	106.70	111.90
3	B	702	X90	O19-C21-C22	2.53	128.29	111.66
4	A	703	COA	C3P-N4P-C5P	-2.33	118.51	122.84
3	A	702	X90	O19-C21-C22	2.27	126.61	111.66
2	A	701	FAD	C5A-C6A-N6A	2.26	123.78	120.35
2	B	701	FAD	O4'-C4'-C5'	-2.21	104.94	109.92
4	B	703	COA	C5B-C4B-C3B	-2.14	107.31	114.40
2	B	701	FAD	C5A-C6A-N6A	2.14	123.60	120.35
4	B	703	COA	C1B-N9A-C4A	-2.09	122.96	126.64
4	A	703	COA	O2B-C2B-C1B	-2.05	103.28	110.85
4	A	703	COA	CEP-CBP-CCP	2.04	111.57	108.23
4	B	703	COA	C3P-N4P-C5P	-2.04	119.04	122.84
2	A	701	FAD	P-O3P-PA	-2.03	125.86	132.83

There are no chirality outliers.

All (32) torsion outliers are listed below:

Mol	Chain	Res	Type	Atoms
2	B	701	FAD	C2'-C1'-N10-C10
2	A	701	FAD	C2'-C1'-N10-C10
3	B	702	X90	C22-C23-C24-C25
3	A	702	X90	C31-C30-C39-C29
3	A	702	X90	O19-C21-C22-C23
3	B	702	X90	C31-C32-C33-C34
3	A	702	X90	C28-C29-C39-C30
3	B	702	X90	C25-C26-C27-C28
3	B	702	X90	C28-C29-C39-C30
3	B	702	X90	C27-C28-C29-C39
3	A	702	X90	C24-C25-C26-C27
3	A	702	X90	C26-C27-C28-C29
3	A	702	X90	C31-C32-C33-C34
3	B	702	X90	C26-C27-C28-C29
3	A	702	X90	C27-C28-C29-C39
3	A	702	X90	C33-C34-C35-C36

Continued on next page...

Continued from previous page...

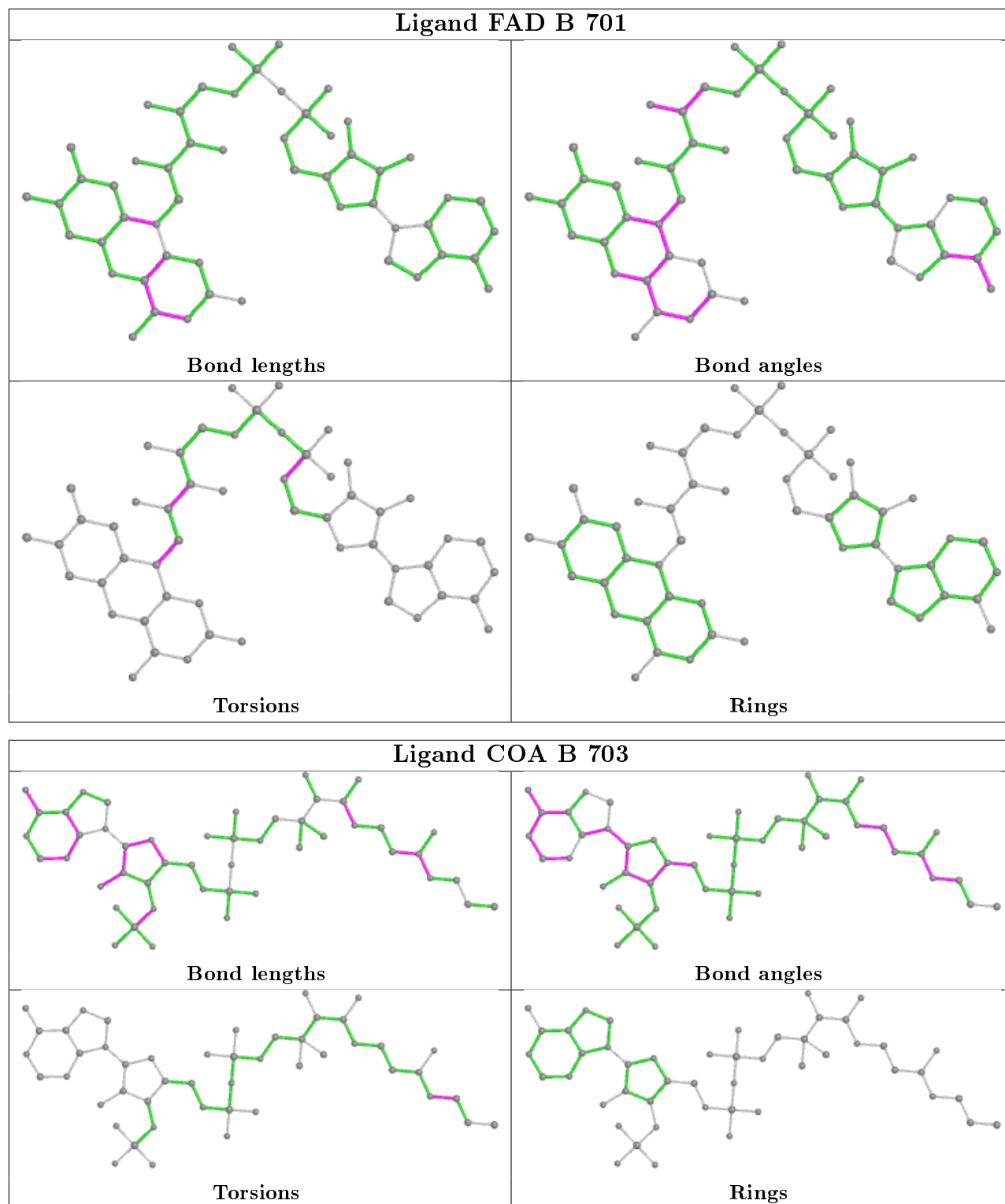
Mol	Chain	Res	Type	Atoms
3	B	702	X90	O19-C21-C22-C23
3	A	702	X90	C22-C23-C24-C25
2	B	701	FAD	C1'-C2'-C3'-O3'
2	A	701	FAD	C1'-C2'-C3'-O3'
4	A	703	COA	O9P-C9P-CAP-OAP
3	B	702	X90	C33-C34-C35-C36
4	B	703	COA	C2P-C3P-N4P-C5P
2	A	701	FAD	O2'-C2'-C3'-C4'
2	A	701	FAD	O2'-C2'-C3'-O3'
2	B	701	FAD	C5B-O5B-PA-O3P
4	A	703	COA	P2A-O3A-P1A-O1A
2	B	701	FAD	O2'-C2'-C3'-O3'
2	B	701	FAD	O2'-C2'-C3'-C4'
2	B	701	FAD	C5B-O5B-PA-O1A
4	A	703	COA	CDP-CBP-CCP-O6A
3	B	702	X90	C39-C30-C31-C32

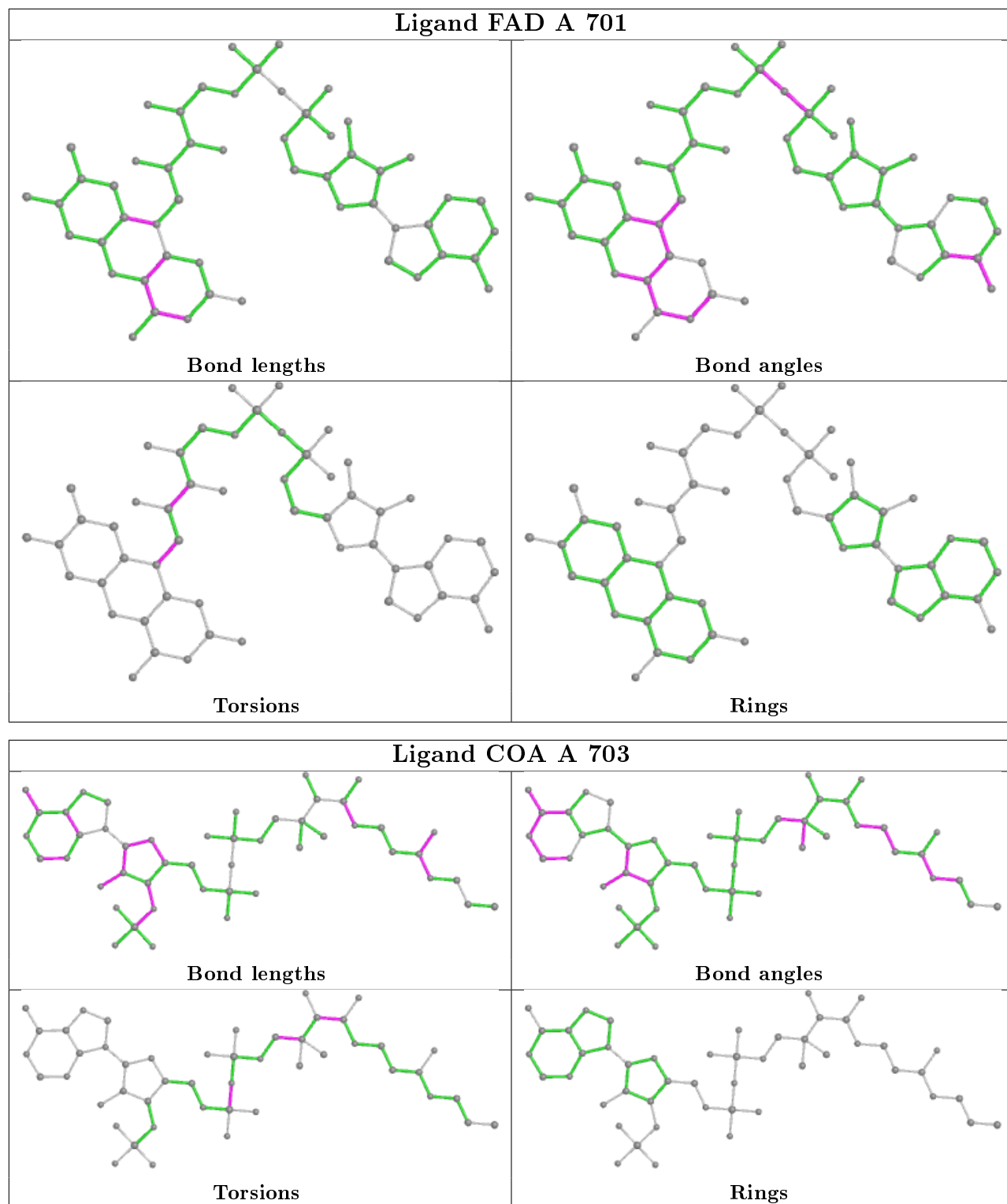
There are no ring outliers.

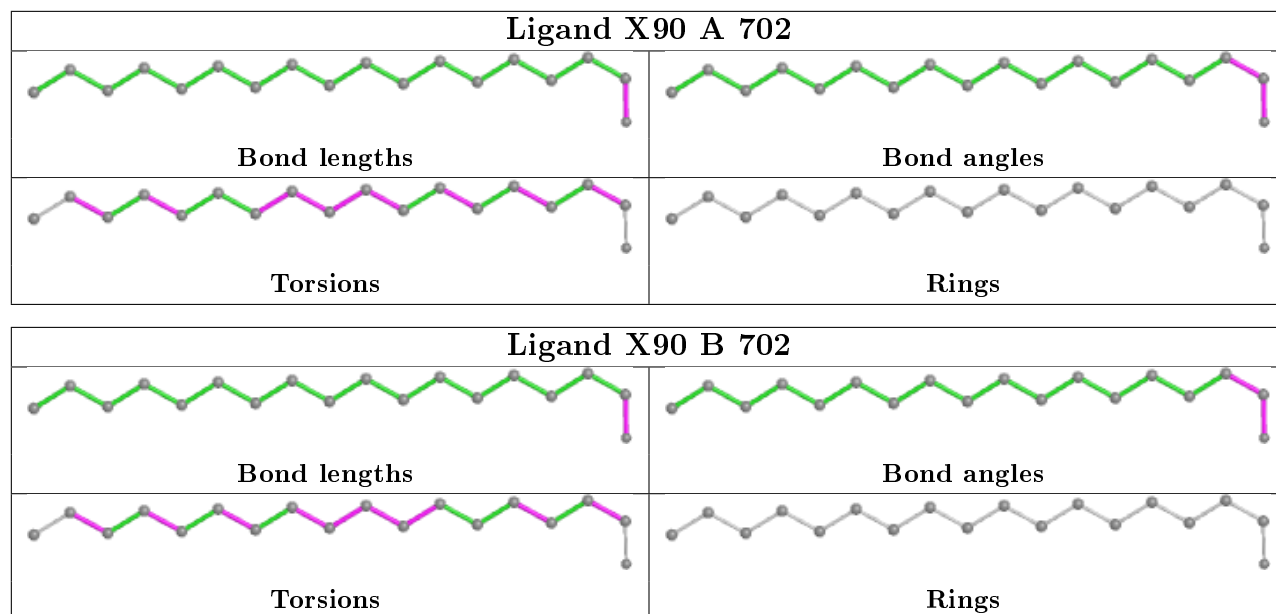
4 monomers are involved in 18 short contacts:

Mol	Chain	Res	Type	Clashes	Symm-Clashes
2	B	701	FAD	8	0
4	B	703	COA	3	0
2	A	701	FAD	6	0
4	A	703	COA	2	0

The following is a two-dimensional graphical depiction of Mogul quality analysis of bond lengths, bond angles, torsion angles, and ring geometry for all instances of the Ligand of Interest. In addition, ligands with molecular weight > 250 and outliers as shown on the validation Tables will also be included. For torsion angles, if less than 5% of the Mogul distribution of torsion angles is within 10 degrees of the torsion angle in question, then that torsion angle is considered an outlier. Any bond that is central to one or more torsion angles identified as an outlier by Mogul will be highlighted in the graph. For rings, the root-mean-square deviation (RMSD) between the ring in question and similar rings identified by Mogul is calculated over all ring torsion angles. If the average RMSD is greater than 60 degrees and the minimal RMSD between the ring in question and any Mogul-identified rings is also greater than 60 degrees, then that ring is considered an outlier. The outliers are highlighted in purple. The color gray indicates Mogul did not find sufficient equivalents in the CSD to analyse the geometry.







5.7 Other polymers [i](#)

There are no such residues in this entry.

5.8 Polymer linkage issues [i](#)

There are no chain breaks in this entry.

6 Fit of model and data

6.1 Protein, DNA and RNA chains

In the following table, the column labelled ‘#RSRZ> 2’ contains the number (and percentage) of RSRZ outliers, followed by percent RSRZ outliers for the chain as percentile scores relative to all X-ray entries and entries of similar resolution. The OWAB column contains the minimum, median, 95th percentile and maximum values of the occupancy-weighted average B-factor per residue. The column labelled ‘Q< 0.9’ lists the number of (and percentage) of residues with an average occupancy less than 0.9.

Mol	Chain	Analysed	<RSRZ>	#RSRZ>2	OWAB(Å ²)	Q<0.9
1	A	607/612 (99%)	-0.06	14 (2%) 60 63	13, 21, 36, 53	0
1	B	609/612 (99%)	-0.11	16 (2%) 56 58	13, 20, 35, 56	0
All	All	1216/1224 (99%)	-0.08	30 (2%) 57 60	13, 21, 36, 56	0

All (30) RSRZ outliers are listed below:

Mol	Chain	Res	Type	RSRZ
1	B	1	MET	7.4
1	A	1	MET	5.3
1	B	483	ASN	5.0
1	B	487	ASN	4.8
1	B	336	THR	4.6
1	A	32	ASP	4.6
1	B	31	SER	4.0
1	A	28	ASP	3.7
1	A	489	ARG	3.5
1	A	27	ALA	3.5
1	B	488	GLY	3.4
1	B	32	ASP	3.4
1	A	482	LYS	3.3
1	A	31	SER	3.2
1	B	482	LYS	2.8
1	B	338	LYS	2.7
1	B	275	GLY	2.5
1	B	0	SER	2.5
1	B	335	MET	2.5
1	A	483	ASN	2.4
1	B	339	THR	2.4
1	A	336	THR	2.3
1	A	564	THR	2.3
1	A	562	GLY	2.3

Continued on next page...

Continued from previous page...

Mol	Chain	Res	Type	RSRZ
1	A	491	LYS	2.2
1	A	246	GLU	2.2
1	B	241	THR	2.1
1	B	479	GLN	2.1
1	A	561	ALA	2.1
1	B	39	ARG	2.0

6.2 Non-standard residues in protein, DNA, RNA chains [i](#)

There are no non-standard protein/DNA/RNA residues in this entry.

6.3 Carbohydrates [i](#)

There are no monosaccharides in this entry.

6.4 Ligands [i](#)

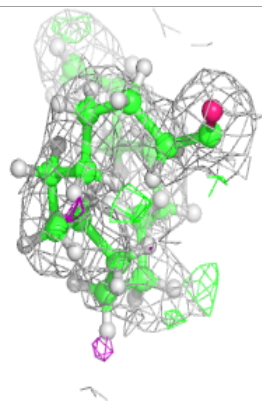
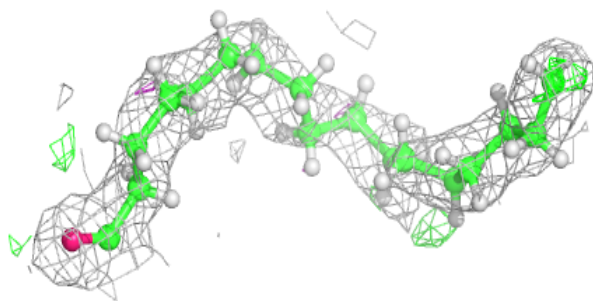
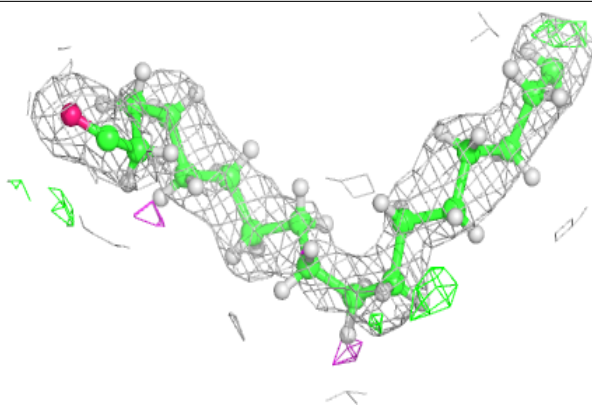
In the following table, the Atoms column lists the number of modelled atoms in the group and the number defined in the chemical component dictionary. The B-factors column lists the minimum, median, 95th percentile and maximum values of B factors of atoms in the group. The column labelled 'Q<0.9' lists the number of atoms with occupancy less than 0.9.

Mol	Type	Chain	Res	Atoms	RSCC	RSR	B-factors(Å ²)	Q<0.9
3	X90	B	702	18/19	0.89	0.14	21,37,46,50	0
3	X90	A	702	18/19	0.90	0.14	21,47,64,65	0
4	COA	A	703	48/48	0.95	0.10	20,26,33,36	0
2	FAD	B	701	53/53	0.95	0.10	14,19,30,34	0
2	FAD	A	701	53/53	0.95	0.11	14,21,30,32	0
4	COA	B	703	48/48	0.96	0.10	17,24,31,35	0

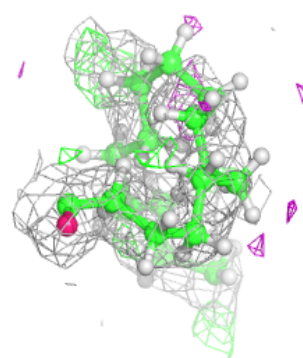
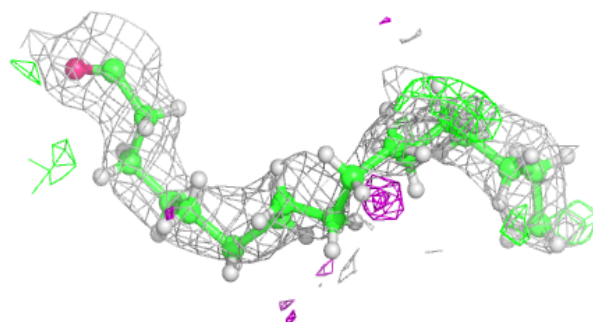
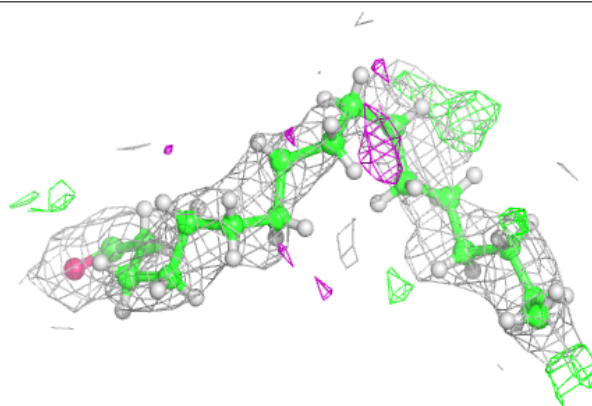
The following is a graphical depiction of the model fit to experimental electron density of all instances of the Ligand of Interest. In addition, ligands with molecular weight > 250 and outliers as shown on the geometry validation Tables will also be included. Each fit is shown from different orientation to approximate a three-dimensional view.

Electron density around X90 B 702:

$2mF_o-DF_c$ (at 0.7 rmsd) in gray
 mF_o-DF_c (at 3 rmsd) in purple (negative)
and green (positive)

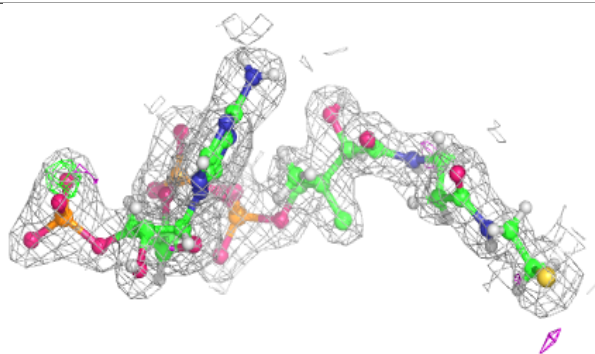
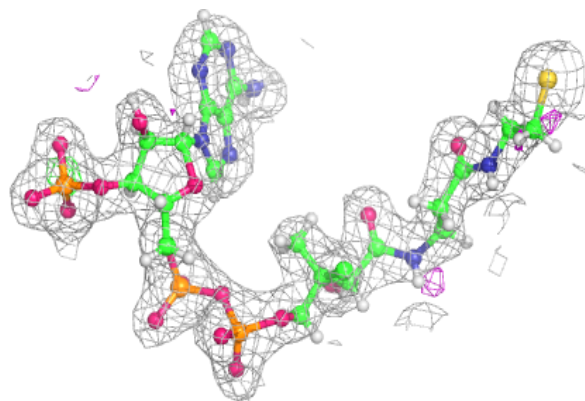
**Electron density around X90 A 702:**

$2mF_o-DF_c$ (at 0.7 rmsd) in gray
 mF_o-DF_c (at 3 rmsd) in purple (negative)
and green (positive)

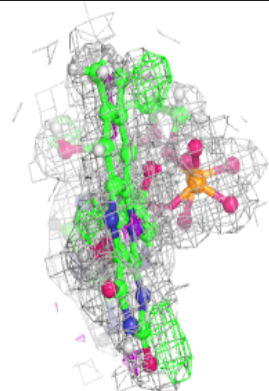
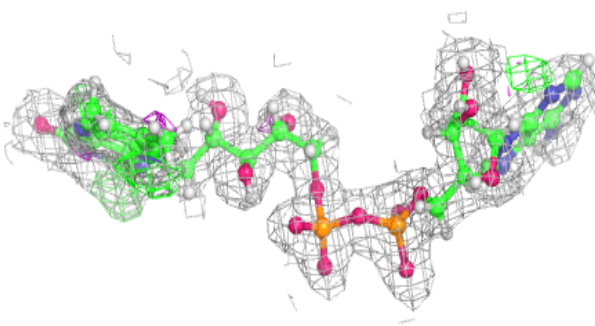
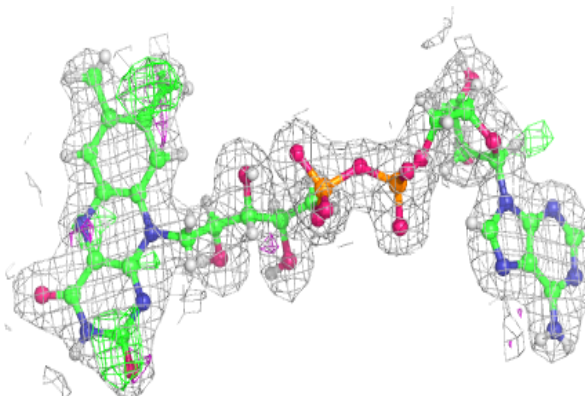


Electron density around COA A 703:

$2mF_o-DF_c$ (at 0.7 rmsd) in gray
 mF_o-DF_c (at 3 rmsd) in purple (negative)
and green (positive)

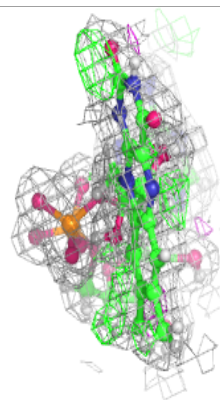
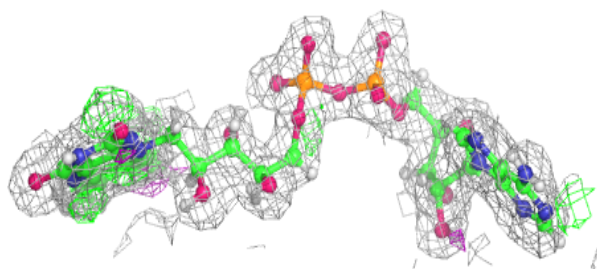
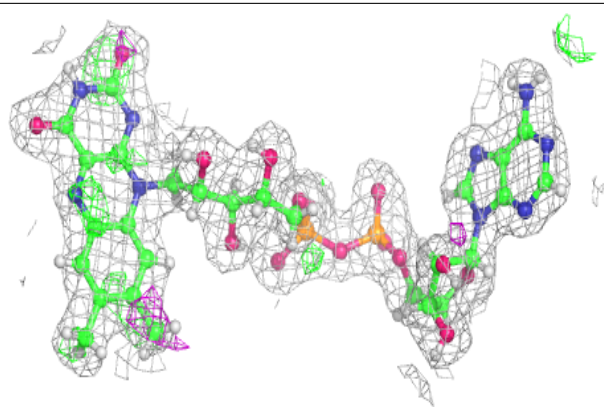
**Electron density around FAD B 701:**

$2mF_o-DF_c$ (at 0.7 rmsd) in gray
 mF_o-DF_c (at 3 rmsd) in purple (negative)
and green (positive)

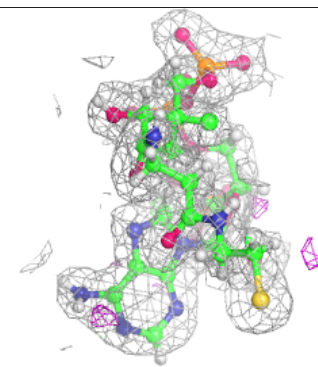
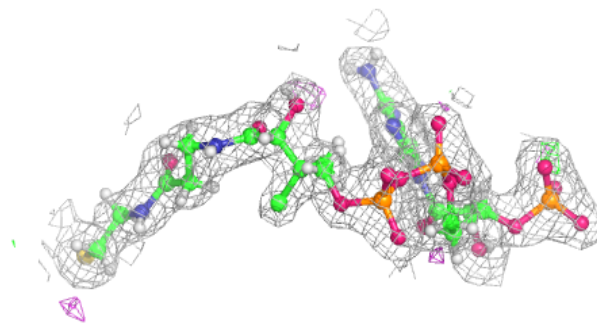
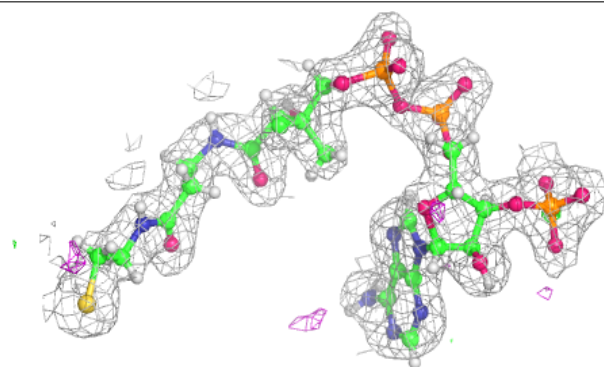


Electron density around FAD A 701:

$2mF_o-DF_c$ (at 0.7 rmsd) in gray
 mF_o-DF_c (at 3 rmsd) in purple (negative)
and green (positive)

**Electron density around COA B 703:**

$2mF_o-DF_c$ (at 0.7 rmsd) in gray
 mF_o-DF_c (at 3 rmsd) in purple (negative)
and green (positive)



6.5 Other polymers

There are no such residues in this entry.