



Full wwPDB X-ray Structure Validation Report ⓘ

Oct 10, 2023 – 02:55 AM EDT

PDB ID : 7LOU
Title : Crystal structure of Clostridium difficile Toxin B (TcdB) glucosyltransferase in complex with UDP and isofagomine
Authors : Harijan, R.K.; Paparella, A.S.; Aboulache, B.L.; Bonanno, J.B.; Almo, S.C.; Schramm, V.L.
Deposited on : 2021-02-10
Resolution : 1.82 Å(reported)

This is a Full wwPDB X-ray Structure Validation Report for a publicly released PDB entry.

We welcome your comments at validation@mail.wwpdb.org

A user guide is available at

<https://www.wwpdb.org/validation/2017/XrayValidationReportHelp>

with specific help available everywhere you see the ⓘ symbol.

The types of validation reports are described at

<http://www.wwpdb.org/validation/2017/FAQs#types>.

The following versions of software and data (see [references ⓘ](#)) were used in the production of this report:

MolProbity : 4.02b-467
Mogul : 1.8.5 (274361), CSD as541be (2020)
Xtriage (Phenix) : 1.13
EDS : 2.35.1
buster-report : 1.1.7 (2018)
Percentile statistics : 20191225.v01 (using entries in the PDB archive December 25th 2019)
Refmac : 5.8.0158
CCP4 : 7.0.044 (Gargrove)
Ideal geometry (proteins) : Engh & Huber (2001)
Ideal geometry (DNA, RNA) : Parkinson et al. (1996)
Validation Pipeline (wwPDB-VP) : 2.35.1

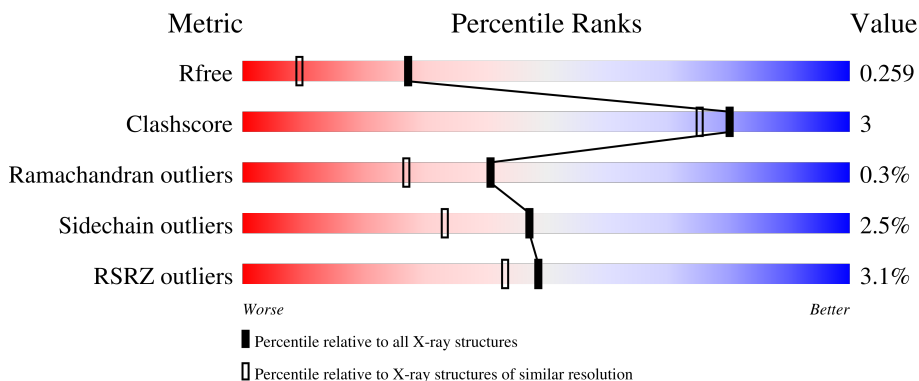
1 Overall quality at a glance

The following experimental techniques were used to determine the structure:

X-RAY DIFFRACTION

The reported resolution of this entry is 1.82 Å.

Percentile scores (ranging between 0-100) for global validation metrics of the entry are shown in the following graphic. The table shows the number of entries on which the scores are based.



Metric	Whole archive (#Entries)	Similar resolution (#Entries, resolution range(Å))
R_{free}	130704	7484 (1.84-1.80)
Clashscore	141614	8401 (1.84-1.80)
Ramachandran outliers	138981	8290 (1.84-1.80)
Sidechain outliers	138945	8290 (1.84-1.80)
RSRZ outliers	127900	7371 (1.84-1.80)

The table below summarises the geometric issues observed across the polymeric chains and their fit to the electron density. The red, orange, yellow and green segments of the lower bar indicate the fraction of residues that contain outliers for ≥ 3 , 2, 1 and 0 types of geometric quality criteria respectively. A grey segment represents the fraction of residues that are not modelled. The numeric value for each fraction is indicated below the corresponding segment, with a dot representing fractions $\leq 5\%$. The upper red bar (where present) indicates the fraction of residues that have poor fit to the electron density. The numeric value is given above the bar.

Mol	Chain	Length	Quality of chain
1	A	552	
1	B	552	

2 Entry composition [i](#)

There are 6 unique types of molecules in this entry. The entry contains 9489 atoms, of which 0 are hydrogens and 0 are deuteriums.

In the tables below, the ZeroOcc column contains the number of atoms modelled with zero occupancy, the AltConf column contains the number of residues with at least one atom in alternate conformation and the Trace column contains the number of residues modelled with at most 2 atoms.

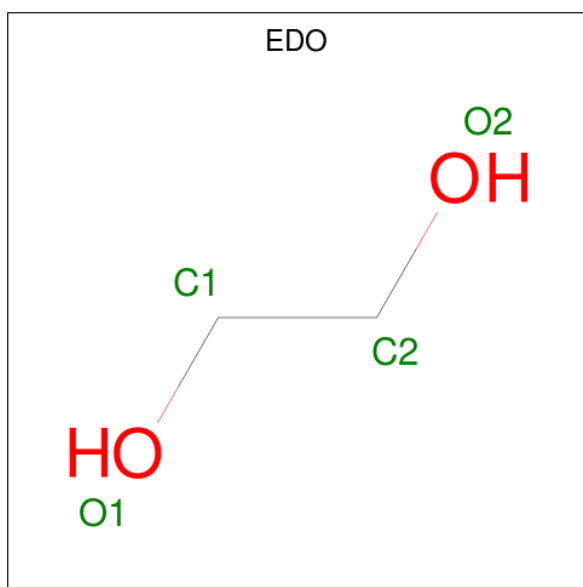
- Molecule 1 is a protein called Glucosyltransferase TcdB.

Mol	Chain	Residues	Atoms					ZeroOcc	AltConf	Trace
			Total	C	N	O	S			
1	A	545	Total	C	N	O	S	0	1	0
			4455	2827	724	888	16			
1	B	540	Total	C	N	O	S	0	0	0
			4399	2787	711	885	16			

There are 20 discrepancies between the modelled and reference sequences:

Chain	Residue	Modelled	Actual	Comment	Reference
A	0	MET	-	expression tag	UNP P18177
A	1	GLY	-	expression tag	UNP P18177
A	544	LEU	-	expression tag	UNP P18177
A	545	GLU	-	expression tag	UNP P18177
A	546	HIS	-	expression tag	UNP P18177
A	547	HIS	-	expression tag	UNP P18177
A	548	HIS	-	expression tag	UNP P18177
A	549	HIS	-	expression tag	UNP P18177
A	550	HIS	-	expression tag	UNP P18177
A	551	HIS	-	expression tag	UNP P18177
B	0	MET	-	expression tag	UNP P18177
B	1	GLY	-	expression tag	UNP P18177
B	544	LEU	-	expression tag	UNP P18177
B	545	GLU	-	expression tag	UNP P18177
B	546	HIS	-	expression tag	UNP P18177
B	547	HIS	-	expression tag	UNP P18177
B	548	HIS	-	expression tag	UNP P18177
B	549	HIS	-	expression tag	UNP P18177
B	550	HIS	-	expression tag	UNP P18177
B	551	HIS	-	expression tag	UNP P18177

- Molecule 2 is 1,2-ETHANEDIOL (three-letter code: EDO) (formula: C₂H₆O₂).



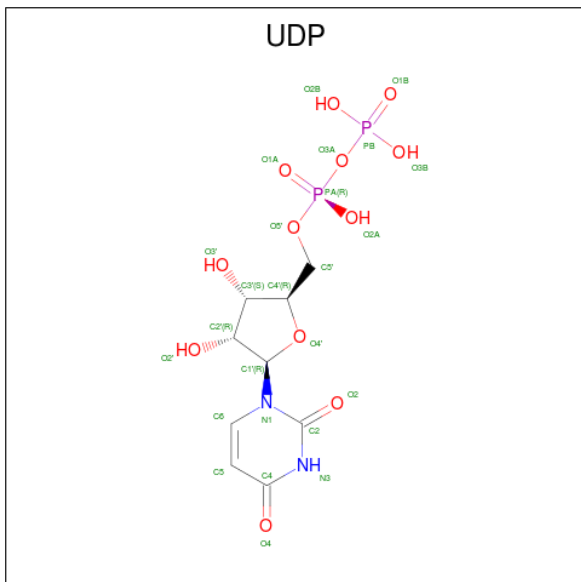
Mol	Chain	Residues	Atoms	ZeroOcc	AltConf
2	A	1	Total C O 4 2 2	0	0
2	A	1	Total C O 4 2 2	0	0
2	A	1	Total C O 4 2 2	0	0
2	A	1	Total C O 4 2 2	0	0
2	A	1	Total C O 4 2 2	0	0
2	A	1	Total C O 4 2 2	0	0
2	A	1	Total C O 4 2 2	0	0
2	A	1	Total C O 4 2 2	0	0
2	A	1	Total C O 4 2 2	0	0
2	A	1	Total C O 4 2 2	0	0
2	B	1	Total C O 4 2 2	0	0
2	B	1	Total C O 4 2 2	0	0
2	B	1	Total C O 4 2 2	0	0
2	B	1	Total C O 4 2 2	0	0
2	B	1	Total C O 4 2 2	0	0

Continued on next page...

Continued from previous page...

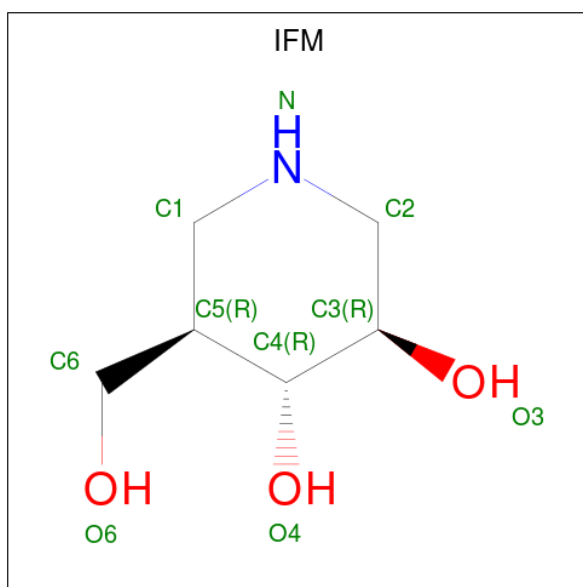
Mol	Chain	Residues	Atoms			ZeroOcc	AltConf
2	B	1	Total	C	O	0	0
			4	2	2		
2	B	1	Total	C	O	0	0
			4	2	2		
2	B	1	Total	C	O	0	0
			4	2	2		
2	B	1	Total	C	O	0	0
			4	2	2		

- Molecule 3 is URIDINE-5'-DIPHOSPHATE (three-letter code: UDP) (formula: C₉H₁₄N₂O₁₂P₂) (labeled as "Ligand of Interest" by depositor).



Mol	Chain	Residues	Atoms					ZeroOcc	AltConf
3	A	1	Total	C	N	O	P	0	0
			25	9	2	12	2		
3	B	1	Total	C	N	O	P	0	0
			25	9	2	12	2		

- Molecule 4 is 5-HYDROXYMETHYL-3,4-DIHYDROXYPIPERIDINE (three-letter code: IFM) (formula: C₆H₁₃NO₃) (labeled as "Ligand of Interest" by depositor).



Mol	Chain	Residues	Atoms			ZeroOcc	AltConf	
			Total	C	N			O
4	A	1	10	6	1	3	0	0
4	B	1	10	6	1	3	0	0

- Molecule 5 is MANGANESE (II) ION (three-letter code: MN) (formula: Mn) (labeled as "Ligand of Interest" by depositor).

Mol	Chain	Residues	Atoms		ZeroOcc	AltConf
			Total	Mn		
5	A	1	1	1	0	0
5	B	1	1	1	0	0

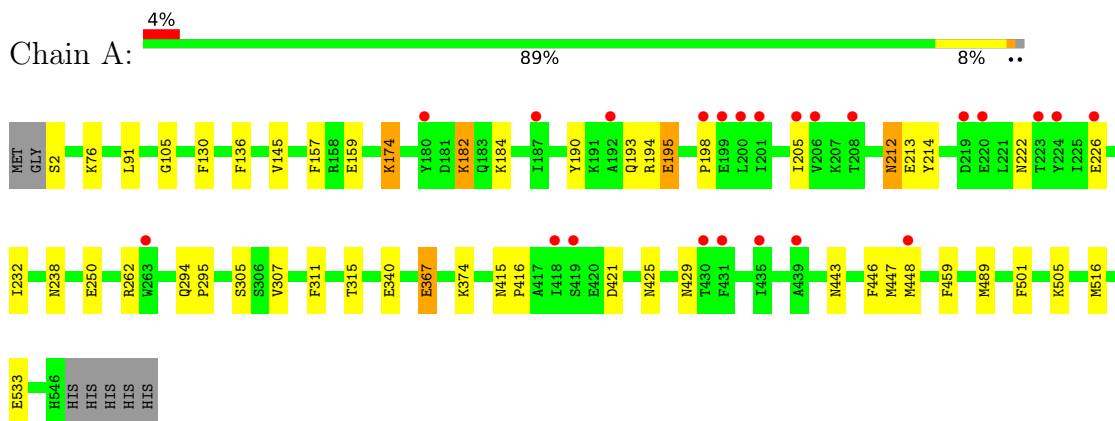
- Molecule 6 is water.

Mol	Chain	Residues	Atoms		ZeroOcc	AltConf
			Total	O		
6	A	222	222	222	0	0
6	B	265	265	265	0	0

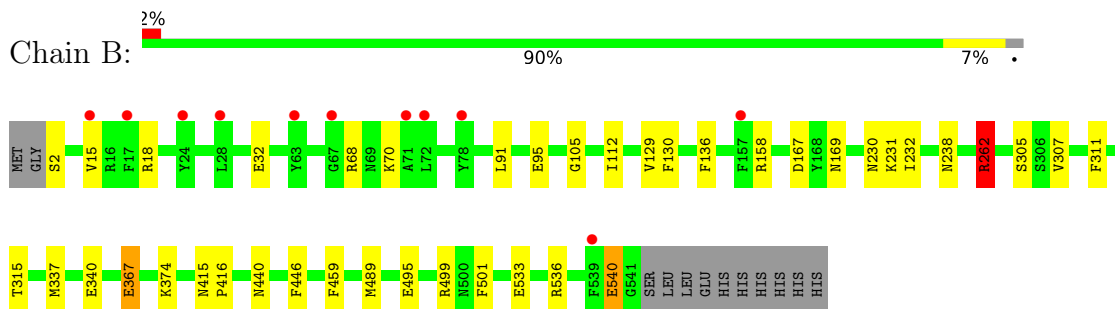
3 Residue-property plots [i](#)

These plots are drawn for all protein, RNA, DNA and oligosaccharide chains in the entry. The first graphic for a chain summarises the proportions of the various outlier classes displayed in the second graphic. The second graphic shows the sequence view annotated by issues in geometry and electron density. Residues are color-coded according to the number of geometric quality criteria for which they contain at least one outlier: green = 0, yellow = 1, orange = 2 and red = 3 or more. A red dot above a residue indicates a poor fit to the electron density ($RSRZ > 2$). Stretches of 2 or more consecutive residues without any outlier are shown as a green connector. Residues present in the sample, but not in the model, are shown in grey.

- Molecule 1: Glucosyltransferase TcdB



- Molecule 1: Glucosyltransferase TcdB



4 Data and refinement statistics

Property	Value	Source
Space group	P 21 21 21	Depositor
Cell constants a, b, c, α , β , γ	51.09Å 121.34Å 206.42Å 90.00° 90.00° 90.00°	Depositor
Resolution (Å)	104.61 – 1.82 104.61 – 1.82	Depositor EDS
% Data completeness (in resolution range)	99.8 (104.61-1.82) 99.7 (104.61-1.82)	Depositor EDS
R_{merge}	0.07	Depositor
R_{sym}	(Not available)	Depositor
$\langle I/\sigma(I) \rangle$ ¹	1.58 (at 1.82Å)	Xtrriage
Refinement program	REFMAC 5.8.0258	Depositor
R, R_{free}	0.215 , 0.252 0.226 , 0.259	Depositor DCC
R_{free} test set	5826 reflections (5.03%)	wwPDB-VP
Wilson B-factor (Å ²)	35.9	Xtrriage
Anisotropy	0.097	Xtrriage
Bulk solvent k_{sol} (e/Å ³), B_{sol} (Å ²)	0.35 , 41.2	EDS
L-test for twinning ²	$\langle L \rangle = 0.49$, $\langle L^2 \rangle = 0.32$	Xtrriage
Estimated twinning fraction	No twinning to report.	Xtrriage
F_o, F_c correlation	0.96	EDS
Total number of atoms	9489	wwPDB-VP
Average B, all atoms (Å ²)	47.0	wwPDB-VP

Xtrriage's analysis on translational NCS is as follows: *The largest off-origin peak in the Patterson function is 3.03% of the height of the origin peak. No significant pseudotranslation is detected.*

¹Intensities estimated from amplitudes.

²Theoretical values of $\langle |L| \rangle$, $\langle L^2 \rangle$ for acentric reflections are 0.5, 0.333 respectively for untwinned datasets, and 0.375, 0.2 for perfectly twinned datasets.

5 Model quality [i](#)

5.1 Standard geometry [i](#)

Bond lengths and bond angles in the following residue types are not validated in this section: UDP, IFM, EDO, MN

The Z score for a bond length (or angle) is the number of standard deviations the observed value is removed from the expected value. A bond length (or angle) with $|Z| > 5$ is considered an outlier worth inspection. RMSZ is the root-mean-square of all Z scores of the bond lengths (or angles).

Mol	Chain	Bond lengths		Bond angles	
		RMSZ	# Z >5	RMSZ	# Z >5
1	A	0.68	0/4540	0.75	0/6128
1	B	0.68	0/4479	0.75	1/6050 (0.0%)
All	All	0.68	0/9019	0.75	1/12178 (0.0%)

Chiral center outliers are detected by calculating the chiral volume of a chiral center and verifying if the center is modelled as a planar moiety or with the opposite hand. A planarity outlier is detected by checking planarity of atoms in a peptide group, atoms in a mainchain group or atoms of a sidechain that are expected to be planar.

Mol	Chain	#Chirality outliers	#Planarity outliers
1	A	0	1

There are no bond length outliers.

All (1) bond angle outliers are listed below:

Mol	Chain	Res	Type	Atoms	Z	Observed($^{\circ}$)	Ideal($^{\circ}$)
1	B	262	ARG	NE-CZ-NH2	-7.05	116.78	120.30

There are no chirality outliers.

All (1) planarity outliers are listed below:

Mol	Chain	Res	Type	Group
1	A	212	ASN	Peptide

5.2 Too-close contacts [i](#)

In the following table, the Non-H and H(model) columns list the number of non-hydrogen atoms and hydrogen atoms in the chain respectively. The H(added) column lists the number of hydrogen atoms added and optimized by MolProbity. The Clashes column lists the number of clashes within

the asymmetric unit, whereas Symm-Clashes lists symmetry-related clashes.

Mol	Chain	Non-H	H(model)	H(added)	Clashes	Symm-Clashes
1	A	4455	0	4332	25	0
1	B	4399	0	4248	23	0
2	A	36	0	54	1	0
2	B	40	0	60	3	0
3	A	25	0	11	0	0
3	B	25	0	11	0	0
4	A	10	0	13	0	0
4	B	10	0	13	0	0
5	A	1	0	0	0	0
5	B	1	0	0	0	0
6	A	222	0	0	4	0
6	B	265	0	0	3	0
All	All	9489	0	8742	48	0

The all-atom clashscore is defined as the number of clashes found per 1000 atoms (including hydrogen atoms). The all-atom clashscore for this structure is 3.

All (48) close contacts within the same asymmetric unit are listed below, sorted by their clash magnitude.

Atom-1	Atom-2	Interatomic distance (Å)	Clash overlap (Å)
1:A:447:MET:O	1:A:448:MET:HB3	1.82	0.79
6:A:903:HOH:O	1:B:337:MET:HG2	1.82	0.79
1:B:262:ARG:NH2	2:B:602:EDO:H22	2.01	0.75
1:B:311:PHE:O	1:B:315:THR:HG23	1.87	0.74
1:A:311:PHE:O	1:A:315:THR:HG23	1.89	0.73
1:B:95:GLU:OE2	6:B:701:HOH:O	2.10	0.68
1:A:182:LYS:HD3	1:A:214:TYR:OH	1.95	0.66
1:B:262:ARG:HH22	2:B:602:EDO:H22	1.59	0.64
1:A:262:ARG:NH2	6:A:701:HOH:O	2.32	0.61
1:A:516:MET:HG3	6:A:908:HOH:O	2.01	0.61
1:B:167:ASP:OD1	1:B:169:ASN:HB2	2.04	0.57
1:B:230:ASN:HB2	6:B:917:HOH:O	2.05	0.56
1:B:536:ARG:O	1:B:540:GLU:HG2	2.05	0.56
1:A:190:TYR:CD1	1:A:205:ILE:HD13	2.42	0.54
1:A:212:ASN:HB3	1:A:213:GLU:HG3	1.91	0.53
1:A:425:ASN:O	1:A:429:ASN:OD1	2.27	0.52
1:B:238:ASN:HA	2:B:608:EDO:H12	1.92	0.51
1:A:157:PHE:CZ	1:A:174:LYS:HG2	2.46	0.50
1:A:190:TYR:HA	1:A:205:ILE:HD11	1.93	0.49
1:A:130:PHE:HA	1:A:238:ASN:O	2.13	0.49

Continued on next page...

Continued from previous page...

Atom-1	Atom-2	Interatomic distance (Å)	Clash overlap (Å)
1:B:440:ASN:HB3	6:B:921:HOH:O	2.12	0.48
1:B:130:PHE:HA	1:B:238:ASN:O	2.13	0.48
1:A:311:PHE:CE1	1:A:315:THR:HG21	2.49	0.47
1:B:446:PHE:CD2	1:B:489:MET:HE1	2.49	0.47
1:A:91:LEU:HB3	1:A:367:GLU:HB2	1.97	0.47
1:A:76:LYS:HZ1	2:A:606:EDO:C2	2.29	0.46
1:B:91:LEU:HB3	1:B:367:GLU:HB2	1.98	0.46
1:B:446:PHE:CD2	1:B:489:MET:CE	2.99	0.45
1:A:194:ARG:O	1:A:195:GLU:CB	2.64	0.45
1:A:446:PHE:CD2	1:A:489:MET:CE	3.00	0.45
1:A:415:ASN:N	1:A:416:PRO:CD	2.80	0.45
1:B:374:LYS:HA	1:B:501:PHE:O	2.18	0.44
1:A:105:GLY:HA2	1:A:136:PHE:O	2.18	0.43
1:B:112:ILE:CD1	1:B:231:LYS:HE2	2.49	0.43
1:B:415:ASN:N	1:B:416:PRO:CD	2.82	0.43
1:A:159:GLU:HG2	6:A:821:HOH:O	2.19	0.43
1:A:232:ILE:HD12	1:A:232:ILE:HA	1.89	0.42
1:B:105:GLY:HA2	1:B:136:PHE:O	2.19	0.42
1:A:374:LYS:HA	1:A:501:PHE:O	2.20	0.42
1:A:145:VAL:HG13	1:A:182:LYS:HD2	2.02	0.41
1:B:70:LYS:HA	1:B:70:LYS:HD3	1.75	0.41
1:B:495:GLU:OE1	1:B:499:ARG:NH2	2.53	0.41
1:A:443:ASN:OD1	1:A:443:ASN:C	2.59	0.41
1:A:222:ASN:O	1:A:226:GLU:OE2	2.38	0.41
1:B:15:VAL:HG22	1:B:68:ARG:NH1	2.36	0.41
1:A:294:GLN:HA	1:A:295:PRO:HD3	1.97	0.40
1:B:232:ILE:HD12	1:B:232:ILE:HA	1.90	0.40
1:B:129:VAL:CG1	1:B:232:ILE:HD11	2.51	0.40

There are no symmetry-related clashes.

5.3 Torsion angles [i](#)

5.3.1 Protein backbone [i](#)

In the following table, the Percentiles column shows the percent Ramachandran outliers of the chain as a percentile score with respect to all X-ray entries followed by that with respect to entries of similar resolution.

The Analysed column shows the number of residues for which the backbone conformation was analysed, and the total number of residues.

Mol	Chain	Analysed	Favoured	Allowed	Outliers	Percentiles
1	A	544/552 (99%)	529 (97%)	12 (2%)	3 (1%)	25 12
1	B	538/552 (98%)	531 (99%)	7 (1%)	0	100 100
All	All	1082/1104 (98%)	1060 (98%)	19 (2%)	3 (0%)	41 27

All (3) Ramachandran outliers are listed below:

Mol	Chain	Res	Type
1	A	195	GLU
1	A	421	ASP
1	A	198	PRO

5.3.2 Protein sidechains [i](#)

In the following table, the Percentiles column shows the percent sidechain outliers of the chain as a percentile score with respect to all X-ray entries followed by that with respect to entries of similar resolution.

The Analysed column shows the number of residues for which the sidechain conformation was analysed, and the total number of residues.

Mol	Chain	Analysed	Rotameric	Outliers	Percentiles
1	A	497/505 (98%)	484 (97%)	13 (3%)	46 32
1	B	489/505 (97%)	477 (98%)	12 (2%)	47 33
All	All	986/1010 (98%)	961 (98%)	25 (2%)	47 33

All (25) residues with a non-rotameric sidechain are listed below:

Mol	Chain	Res	Type
1	A	2	SER
1	A	174	LYS
1	A	182	LYS
1	A	184	LYS
1	A	193	GLN
1	A	250	GLU
1	A	305	SER
1	A	307	VAL
1	A	340	GLU
1	A	367	GLU
1	A	459	PHE
1	A	505	LYS
1	A	533	GLU

Continued on next page...

Continued from previous page...

Mol	Chain	Res	Type
1	B	2	SER
1	B	18	ARG
1	B	32	GLU
1	B	158	ARG
1	B	262	ARG
1	B	305	SER
1	B	307	VAL
1	B	340	GLU
1	B	367	GLU
1	B	459	PHE
1	B	533	GLU
1	B	540	GLU

Sometimes sidechains can be flipped to improve hydrogen bonding and reduce clashes. All (8) such sidechains are listed below:

Mol	Chain	Res	Type
1	A	89	ASN
1	A	425	ASN
1	A	429	ASN
1	A	467	ASN
1	B	20	GLN
1	B	89	ASN
1	B	422	ASN
1	B	467	ASN

5.3.3 RNA [i](#)

There are no RNA molecules in this entry.

5.4 Non-standard residues in protein, DNA, RNA chains [i](#)

There are no non-standard protein/DNA/RNA residues in this entry.

5.5 Carbohydrates [i](#)

There are no monosaccharides in this entry.

5.6 Ligand geometry i

Of 25 ligands modelled in this entry, 2 are monoatomic - leaving 23 for Mogul analysis.

In the following table, the Counts columns list the number of bonds (or angles) for which Mogul statistics could be retrieved, the number of bonds (or angles) that are observed in the model and the number of bonds (or angles) that are defined in the Chemical Component Dictionary. The Link column lists molecule types, if any, to which the group is linked. The Z score for a bond length (or angle) is the number of standard deviations the observed value is removed from the expected value. A bond length (or angle) with $|Z| > 2$ is considered an outlier worth inspection. RMSZ is the root-mean-square of all Z scores of the bond lengths (or angles).

Mol	Type	Chain	Res	Link	Bond lengths			Bond angles		
					Counts	RMSZ	# Z > 2	Counts	RMSZ	# Z > 2
2	EDO	B	607	-	3,3,3	0.31	0	2,2,2	0.45	0
2	EDO	A	609	-	3,3,3	0.16	0	2,2,2	0.48	0
2	EDO	B	605	-	3,3,3	0.03	0	2,2,2	0.19	0
2	EDO	B	601	-	3,3,3	0.08	0	2,2,2	0.17	0
2	EDO	B	602	-	3,3,3	0.67	0	2,2,2	0.95	0
2	EDO	A	602	-	3,3,3	0.07	0	2,2,2	0.19	0
2	EDO	A	606	-	3,3,3	0.10	0	2,2,2	0.20	0
2	EDO	A	605	-	3,3,3	0.18	0	2,2,2	0.26	0
2	EDO	B	604	-	3,3,3	0.10	0	2,2,2	0.34	0
2	EDO	A	601	-	3,3,3	0.27	0	2,2,2	0.40	0
2	EDO	A	603	-	3,3,3	0.12	0	2,2,2	0.16	0
2	EDO	B	610	-	3,3,3	0.10	0	2,2,2	0.10	0
2	EDO	B	609	-	3,3,3	0.16	0	2,2,2	0.16	0
2	EDO	B	603	-	3,3,3	0.14	0	2,2,2	0.29	0
3	UDP	A	610	5	24,26,26	1.07	2 (8%)	37,40,40	1.77	9 (24%)
2	EDO	B	608	-	3,3,3	0.16	0	2,2,2	0.38	0
3	UDP	B	611	5	24,26,26	1.00	0	37,40,40	1.46	6 (16%)
2	EDO	B	606	-	3,3,3	0.16	0	2,2,2	0.11	0
4	IFM	A	611	-	9,10,10	0.24	0	9,13,13	0.65	0
4	IFM	B	612	-	9,10,10	0.44	0	9,13,13	0.62	0
2	EDO	A	608	-	3,3,3	0.07	0	2,2,2	0.11	0
2	EDO	A	604	-	3,3,3	0.11	0	2,2,2	0.37	0
2	EDO	A	607	-	3,3,3	0.19	0	2,2,2	0.23	0

In the following table, the Chirals column lists the number of chiral outliers, the number of chiral centers analysed, the number of these observed in the model and the number defined in the Chemical Component Dictionary. Similar counts are reported in the Torsion and Rings columns. '-' means no outliers of that kind were identified.

Mol	Type	Chain	Res	Link	Chirals	Torsions	Rings
2	EDO	B	607	-	-	1/1/1/1	-

Continued on next page...

Continued from previous page...

Mol	Type	Chain	Res	Link	Chirals	Torsions	Rings
2	EDO	A	609	-	-	0/1/1/1	-
2	EDO	B	605	-	-	1/1/1/1	-
2	EDO	B	601	-	-	1/1/1/1	-
2	EDO	B	602	-	-	0/1/1/1	-
2	EDO	A	602	-	-	0/1/1/1	-
2	EDO	A	606	-	-	1/1/1/1	-
2	EDO	A	605	-	-	1/1/1/1	-
2	EDO	B	604	-	-	1/1/1/1	-
2	EDO	A	601	-	-	0/1/1/1	-
2	EDO	A	603	-	-	1/1/1/1	-
2	EDO	B	610	-	-	0/1/1/1	-
2	EDO	B	609	-	-	1/1/1/1	-
2	EDO	B	603	-	-	0/1/1/1	-
3	UDP	A	610	5	-	1/16/32/32	0/2/2/2
2	EDO	B	608	-	-	1/1/1/1	-
3	UDP	B	611	5	-	0/16/32/32	0/2/2/2
2	EDO	B	606	-	-	0/1/1/1	-
4	IFM	A	611	-	-	0/2/16/16	0/1/1/1
4	IFM	B	612	-	-	0/2/16/16	0/1/1/1
2	EDO	A	608	-	-	0/1/1/1	-
2	EDO	A	604	-	-	1/1/1/1	-
2	EDO	A	607	-	-	1/1/1/1	-

All (2) bond length outliers are listed below:

Mol	Chain	Res	Type	Atoms	Z	Observed(Å)	Ideal(Å)
3	A	610	UDP	C4-N3	-2.39	1.34	1.38
3	A	610	UDP	C6-C5	2.09	1.39	1.35

All (15) bond angle outliers are listed below:

Mol	Chain	Res	Type	Atoms	Z	Observed(°)	Ideal(°)
3	A	610	UDP	N3-C2-N1	5.13	121.70	114.89
3	A	610	UDP	C4-N3-C2	-5.03	119.94	126.58
3	A	610	UDP	O2-C2-N1	-3.51	118.12	122.79
3	B	611	UDP	N3-C2-N1	3.51	119.55	114.89
3	A	610	UDP	C5-C4-N3	3.11	119.50	114.84
3	B	611	UDP	O3'-C3'-C4'	3.08	119.96	111.05
3	B	611	UDP	C5-C4-N3	3.04	119.38	114.84
3	B	611	UDP	C4-N3-C2	-2.98	122.65	126.58
3	A	610	UDP	O2B-PB-O1B	2.47	120.33	110.68
3	A	610	UDP	O4-C4-C5	-2.43	120.88	125.16

Continued on next page...

Continued from previous page...

Mol	Chain	Res	Type	Atoms	Z	Observed(°)	Ideal(°)
3	A	610	UDP	PA-O3A-PB	-2.42	124.53	132.83
3	B	611	UDP	C3'-C2'-C1'	2.22	105.65	101.43
3	A	610	UDP	O3'-C3'-C4'	2.17	117.33	111.05
3	A	610	UDP	C6-N1-C2	-2.14	118.26	120.99
3	B	611	UDP	O2B-PB-O1B	2.06	118.75	110.68

There are no chirality outliers.

All (12) torsion outliers are listed below:

Mol	Chain	Res	Type	Atoms
3	A	610	UDP	C5'-O5'-PA-O1A
2	B	604	EDO	O1-C1-C2-O2
2	A	606	EDO	O1-C1-C2-O2
2	A	607	EDO	O1-C1-C2-O2
2	B	608	EDO	O1-C1-C2-O2
2	B	609	EDO	O1-C1-C2-O2
2	A	605	EDO	O1-C1-C2-O2
2	A	603	EDO	O1-C1-C2-O2
2	A	604	EDO	O1-C1-C2-O2
2	B	607	EDO	O1-C1-C2-O2
2	B	601	EDO	O1-C1-C2-O2
2	B	605	EDO	O1-C1-C2-O2

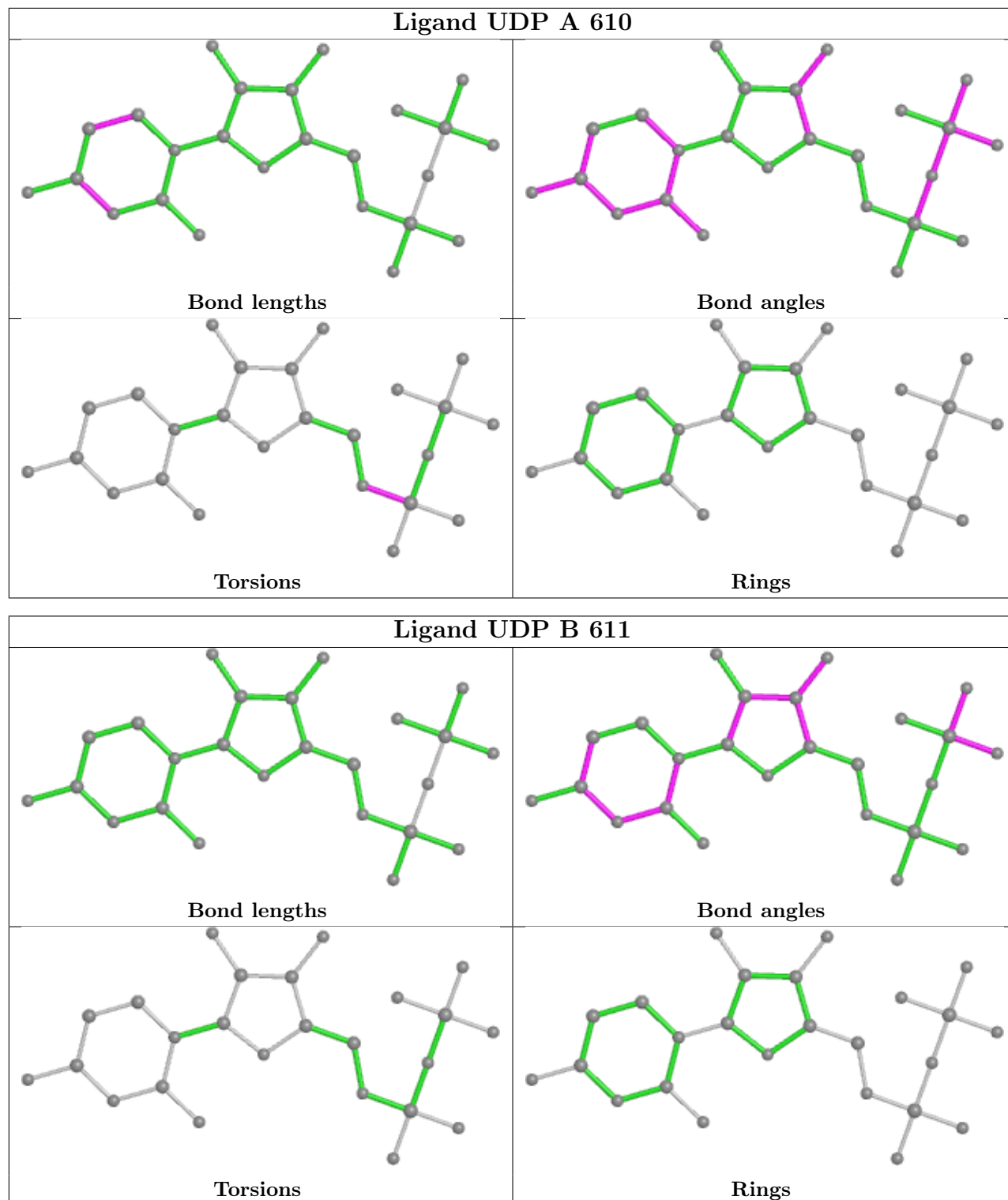
There are no ring outliers.

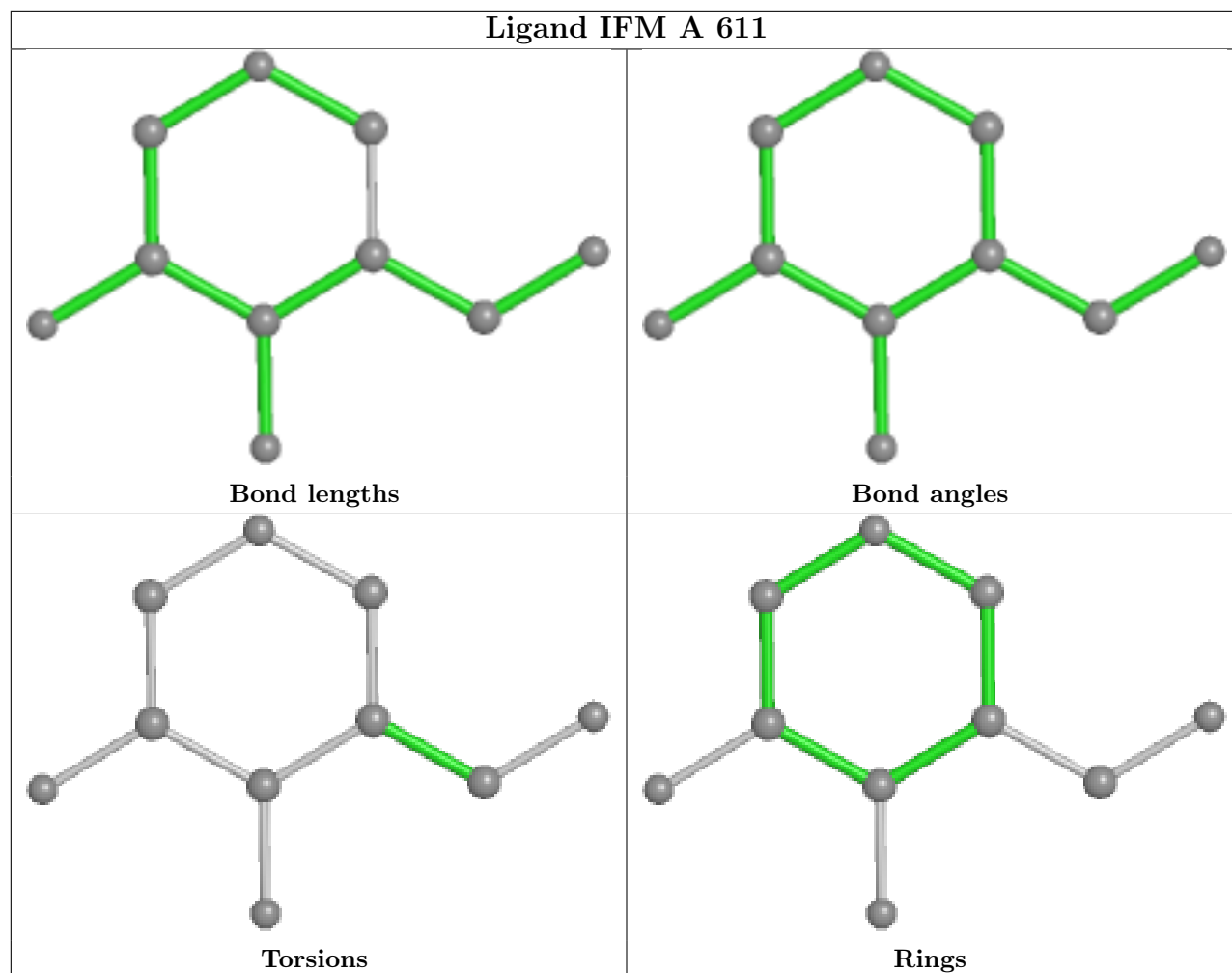
3 monomers are involved in 4 short contacts:

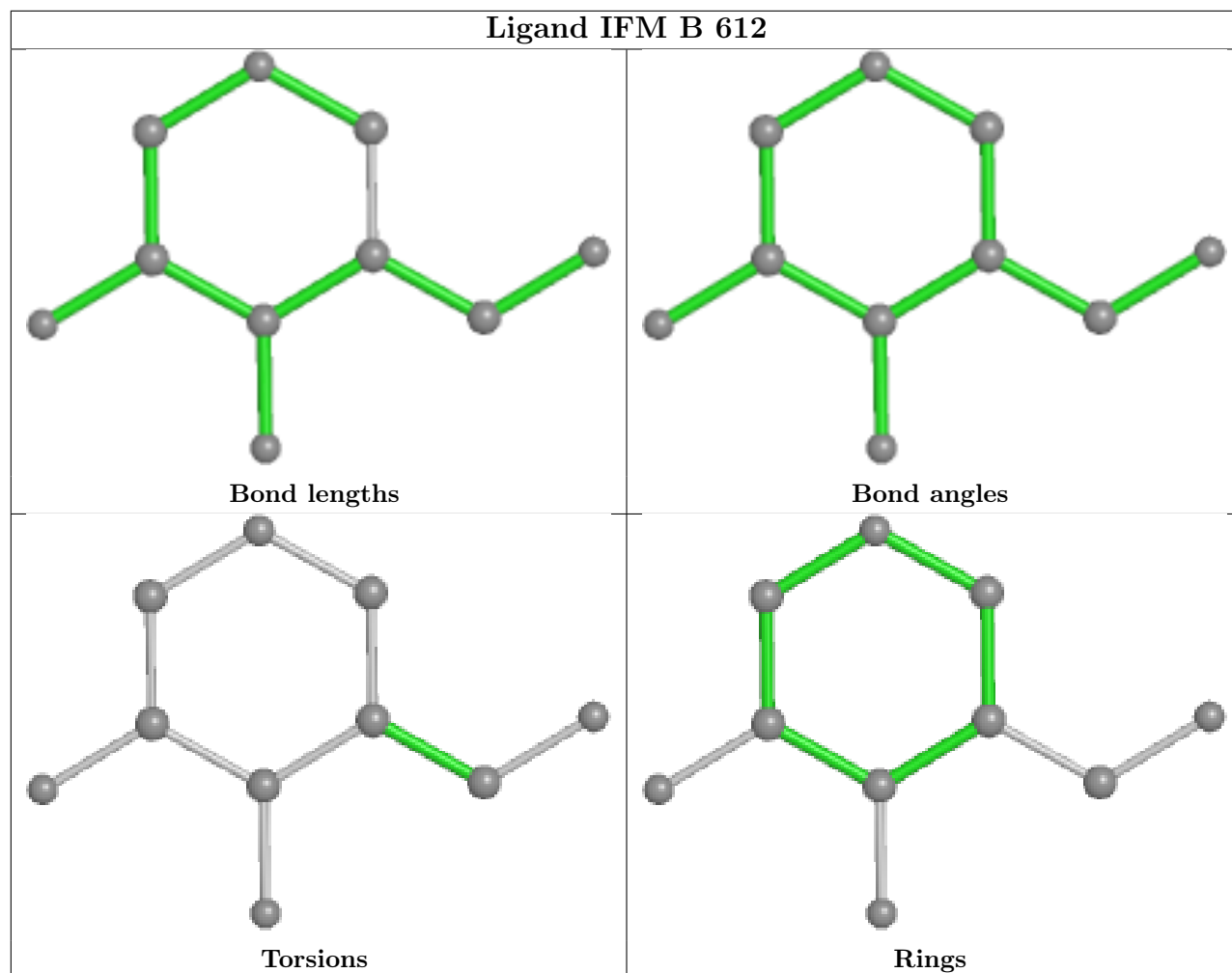
Mol	Chain	Res	Type	Clashes	Symm-Clashes
2	B	602	EDO	2	0
2	A	606	EDO	1	0
2	B	608	EDO	1	0

The following is a two-dimensional graphical depiction of Mogul quality analysis of bond lengths, bond angles, torsion angles, and ring geometry for all instances of the Ligand of Interest. In addition, ligands with molecular weight > 250 and outliers as shown on the validation Tables will also be included. For torsion angles, if less than 5% of the Mogul distribution of torsion angles is within 10 degrees of the torsion angle in question, then that torsion angle is considered an outlier. Any bond that is central to one or more torsion angles identified as an outlier by Mogul will be highlighted in the graph. For rings, the root-mean-square deviation (RMSD) between the ring in question and similar rings identified by Mogul is calculated over all ring torsion angles. If the average RMSD is greater than 60 degrees and the minimal RMSD between the ring in question and any Mogul-identified rings is also greater than 60 degrees, then that ring is considered an outlier. The outliers are highlighted in purple. The color gray indicates Mogul did not find sufficient

equivalents in the CSD to analyse the geometry.







5.7 Other polymers [i](#)

There are no such residues in this entry.

5.8 Polymer linkage issues [i](#)

There are no chain breaks in this entry.

6 Fit of model and data

6.1 Protein, DNA and RNA chains

In the following table, the column labelled ‘#RSRZ > 2’ contains the number (and percentage) of RSRZ outliers, followed by percent RSRZ outliers for the chain as percentile scores relative to all X-ray entries and entries of similar resolution. The OWAB column contains the minimum, median, 95th percentile and maximum values of the occupancy-weighted average B-factor per residue. The column labelled ‘Q < 0.9’ lists the number of (and percentage) of residues with an average occupancy less than 0.9.

Mol	Chain	Analysed	<RSRZ>	#RSRZ>2	OWAB(Å ²)	Q<0.9
1	A	545/552 (98%)	0.12	23 (4%) 36 30	28, 45, 78, 94	0
1	B	540/552 (97%)	-0.05	11 (2%) 65 61	29, 41, 69, 109	0
All	All	1085/1104 (98%)	0.04	34 (3%) 49 43	28, 43, 74, 109	0

All (34) RSRZ outliers are listed below:

Mol	Chain	Res	Type	RSRZ
1	B	539	PHE	5.5
1	A	200	LEU	5.2
1	A	187	ILE	5.1
1	B	17	PHE	4.8
1	A	226	GLU	3.7
1	A	192	ALA	3.6
1	B	67	GLY	3.6
1	A	180	TYR	3.3
1	A	205	ILE	3.0
1	A	206	VAL	2.9
1	B	24	TYR	2.9
1	A	419	SER	2.9
1	A	199	GLU	2.8
1	A	430	THR	2.7
1	A	223	THR	2.6
1	B	15	VAL	2.6
1	B	63	TYR	2.5
1	A	418	ILE	2.5
1	B	71	ALA	2.4
1	A	435	ILE	2.4
1	A	198	PRO	2.3
1	A	224	TYR	2.3
1	A	439	ALA	2.3
1	A	201	ILE	2.2

Continued on next page...

Continued from previous page...

Mol	Chain	Res	Type	RSRZ
1	B	78	TYR	2.2
1	A	220	GLU	2.2
1	A	448	MET	2.2
1	A	208	THR	2.1
1	B	28	LEU	2.1
1	A	219	ASP	2.1
1	A	431	PHE	2.1
1	B	157	PHE	2.1
1	A	263	TRP	2.0
1	B	72	LEU	2.0

6.2 Non-standard residues in protein, DNA, RNA chains [i](#)

There are no non-standard protein/DNA/RNA residues in this entry.

6.3 Carbohydrates [i](#)

There are no monosaccharides in this entry.

6.4 Ligands [i](#)

In the following table, the Atoms column lists the number of modelled atoms in the group and the number defined in the chemical component dictionary. The B-factors column lists the minimum, median, 95th percentile and maximum values of B factors of atoms in the group. The column labelled 'Q< 0.9' lists the number of atoms with occupancy less than 0.9.

Mol	Type	Chain	Res	Atoms	RSCC	RSR	B-factors(Å ²)	Q<0.9
2	EDO	B	602	4/4	0.67	0.18	44,48,52,54	0
2	EDO	B	607	4/4	0.68	0.15	57,62,64,68	0
2	EDO	A	607	4/4	0.73	0.11	54,62,65,70	0
2	EDO	B	608	4/4	0.74	0.16	62,68,69,70	0
2	EDO	A	609	4/4	0.78	0.24	66,66,68,69	0
2	EDO	A	608	4/4	0.82	0.18	64,69,70,71	0
2	EDO	B	610	4/4	0.83	0.17	60,61,66,68	0
2	EDO	A	606	4/4	0.84	0.10	61,62,62,65	0
2	EDO	B	609	4/4	0.85	0.15	59,59,60,63	0
2	EDO	A	604	4/4	0.85	0.21	60,64,67,69	0
2	EDO	A	605	4/4	0.87	0.17	55,57,58,60	0
2	EDO	B	604	4/4	0.88	0.15	65,66,67,68	0
2	EDO	B	601	4/4	0.90	0.10	59,59,60,60	0

Continued on next page...

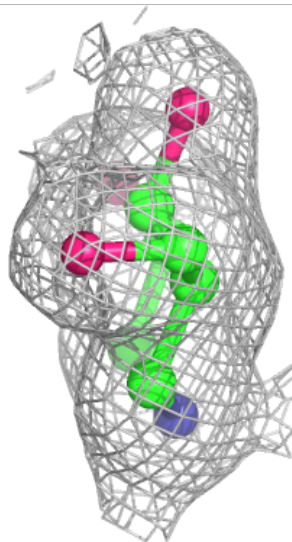
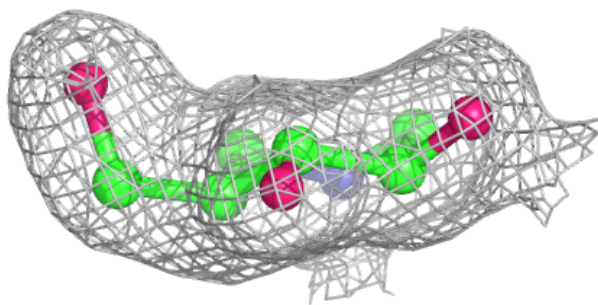
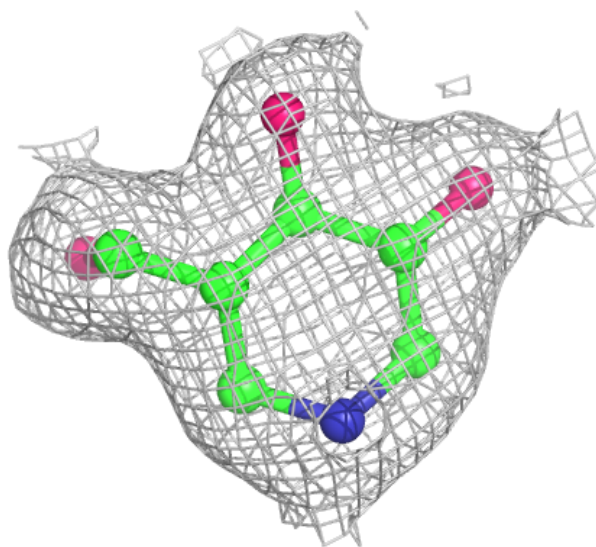
Continued from previous page...

Mol	Type	Chain	Res	Atoms	RSCC	RSR	B-factors(\AA^2)	Q<0.9
2	EDO	B	603	4/4	0.91	0.20	55,56,57,60	0
2	EDO	B	605	4/4	0.92	0.12	60,62,63,64	0
2	EDO	A	601	4/4	0.93	0.13	35,45,47,50	0
2	EDO	B	606	4/4	0.93	0.19	53,54,55,57	0
2	EDO	A	602	4/4	0.94	0.13	51,51,52,54	0
2	EDO	A	603	4/4	0.97	0.08	61,61,61,63	0
4	IFM	B	612	10/10	0.97	0.09	30,31,33,33	0
4	IFM	A	611	10/10	0.98	0.11	31,33,36,39	0
3	UDP	A	610	25/25	0.98	0.09	30,34,41,43	0
3	UDP	B	611	25/25	0.99	0.10	28,31,34,35	0
5	MN	A	612	1/1	1.00	0.13	31,31,31,31	0
5	MN	B	613	1/1	1.00	0.10	34,34,34,34	0

The following is a graphical depiction of the model fit to experimental electron density of all instances of the Ligand of Interest. In addition, ligands with molecular weight > 250 and outliers as shown on the geometry validation Tables will also be included. Each fit is shown from different orientation to approximate a three-dimensional view.

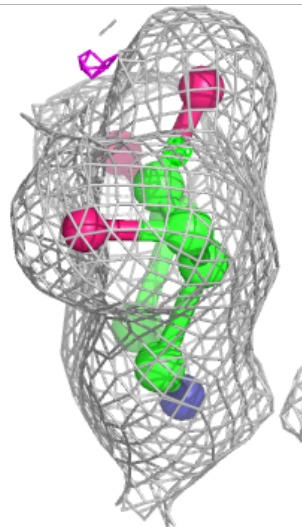
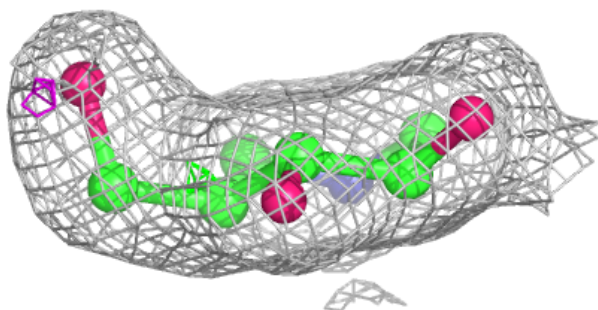
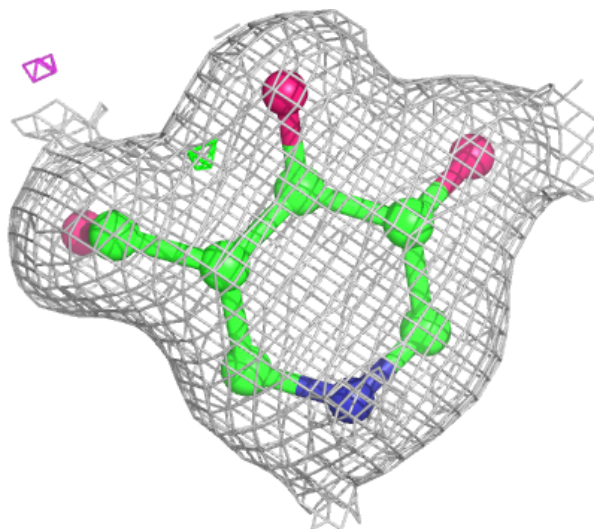
Electron density around IFM B 612:

$2mF_o-DF_c$ (at 0.7 rmsd) in gray
 mF_o-DF_c (at 3 rmsd) in purple (negative)
and green (positive)



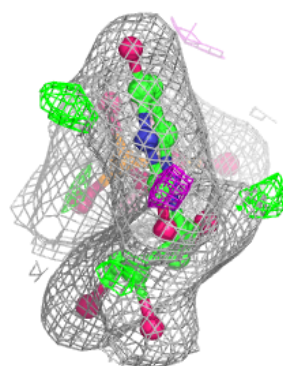
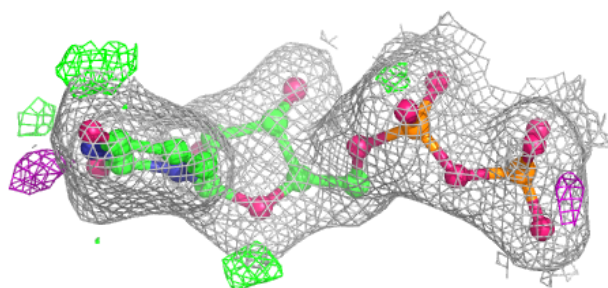
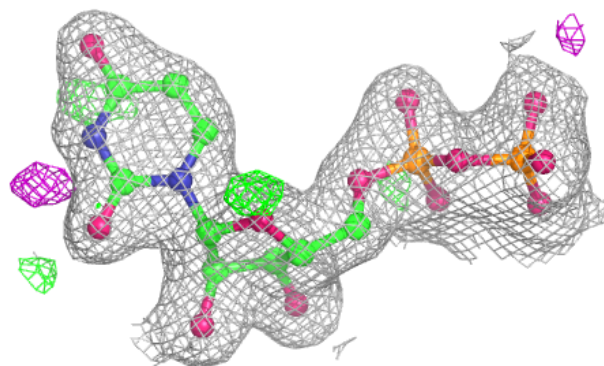
Electron density around IFM A 611:

$2mF_o-DF_c$ (at 0.7 rmsd) in gray
 mF_o-DF_c (at 3 rmsd) in purple (negative)
and green (positive)

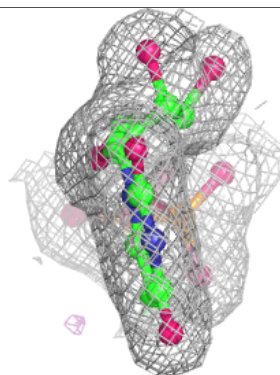
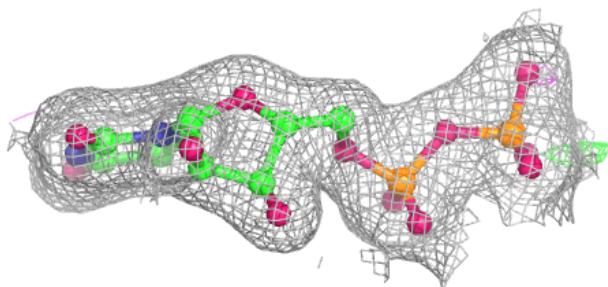
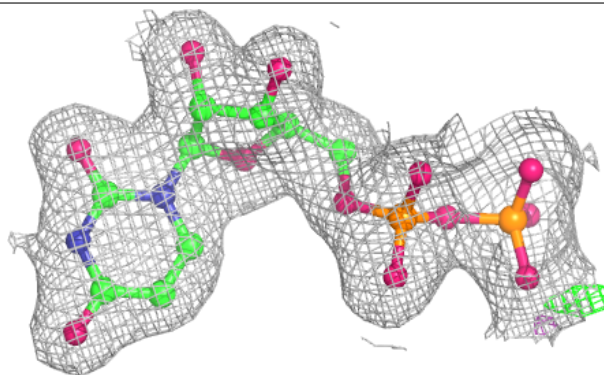


Electron density around UDP A 610:

$2mF_o-DF_c$ (at 0.7 rmsd) in gray
 mF_o-DF_c (at 3 rmsd) in purple (negative)
and green (positive)

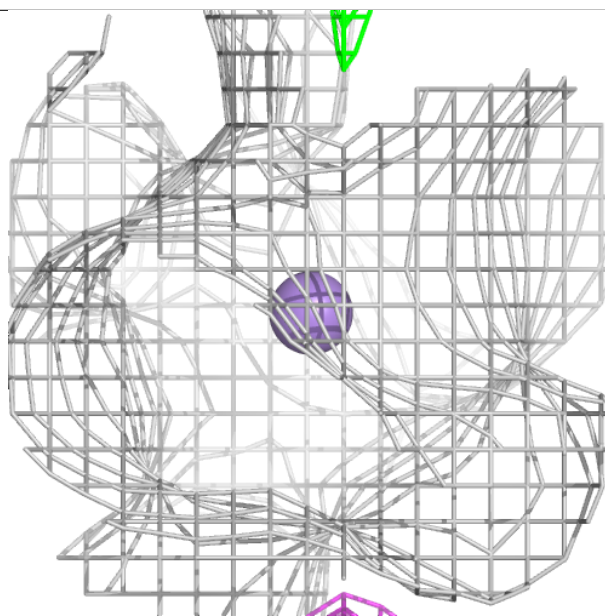
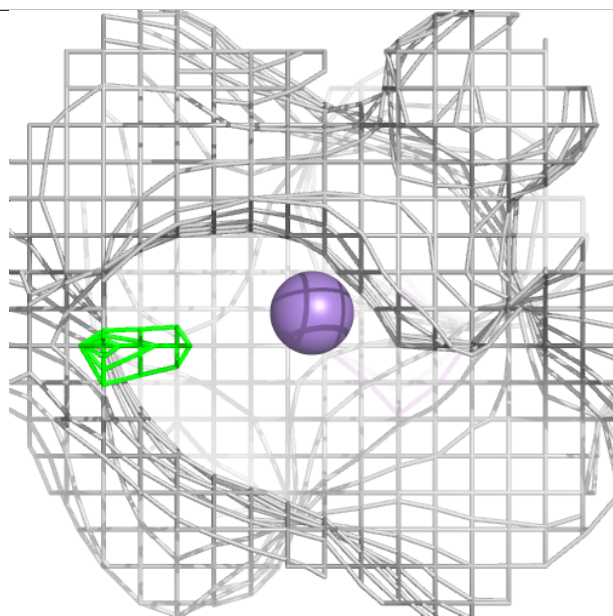
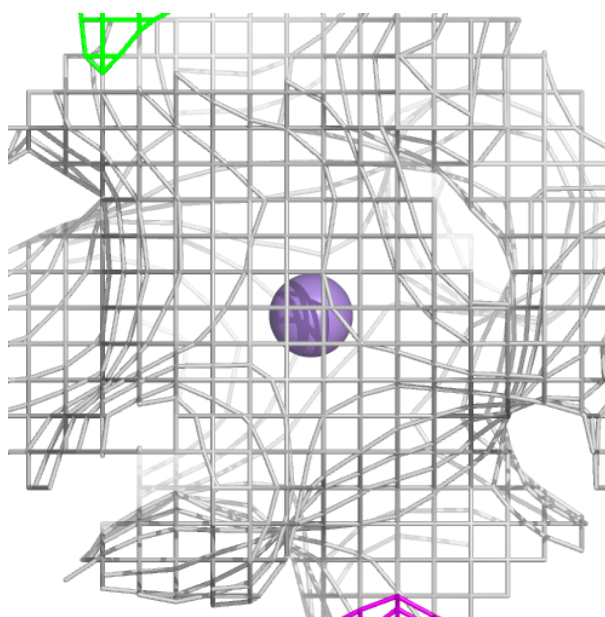
**Electron density around UDP B 611:**

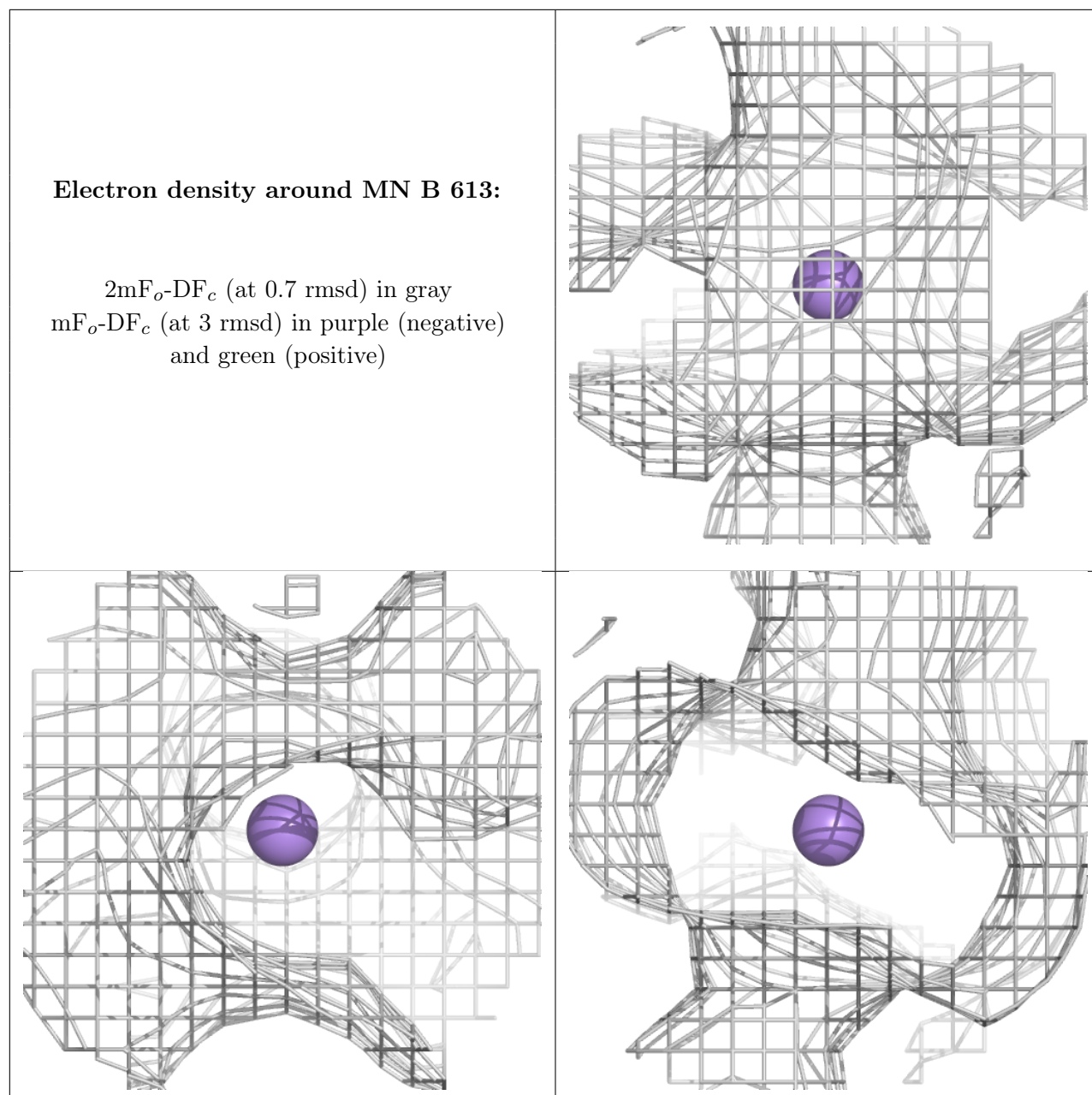
$2mF_o-DF_c$ (at 0.7 rmsd) in gray
 mF_o-DF_c (at 3 rmsd) in purple (negative)
and green (positive)



Electron density around MN A 612:

$2mF_o-DF_c$ (at 0.7 rmsd) in gray
 mF_o-DF_c (at 3 rmsd) in purple (negative)
and green (positive)





6.5 Other polymers [i](#)

There are no such residues in this entry.