



# wwPDB X-ray Structure Validation Summary Report ⓘ

Jan 2, 2024 – 07:57 pm GMT

PDB ID : 5LOV  
Title : DZ-2384 tubulin complex  
Authors : Prota, A.E.; Steinmetz, M.O.; Shore, G.C.; Brouhard, G.; Roulston, A.  
Deposited on : 2016-08-10  
Resolution : 2.40 Å(reported)

This is a wwPDB X-ray Structure Validation Summary Report for a publicly released PDB entry.

We welcome your comments at [validation@mail.wwpdb.org](mailto:validation@mail.wwpdb.org)

A user guide is available at

<https://www.wwpdb.org/validation/2017/XrayValidationReportHelp>

with specific help available everywhere you see the ⓘ symbol.

The types of validation reports are described at

<https://www.wwpdb.org/validation/2017/FAQs#types>.

---

The following versions of software and data (see [references ⓘ](#)) were used in the production of this report:

MolProbity : 4.02b-467  
Mogul : 1.8.4, CSD as541be (2020)  
Xtriage (Phenix) : 1.13  
EDS : 2.36  
buster-report : 1.1.7 (2018)  
Percentile statistics : 20191225.v01 (using entries in the PDB archive December 25th 2019)  
Refmac : 5.8.0158  
CCP4 : 7.0.044 (Gargrove)  
Ideal geometry (proteins) : Engh & Huber (2001)  
Ideal geometry (DNA, RNA) : Parkinson et al. (1996)  
Validation Pipeline (wwPDB-VP) : 2.36

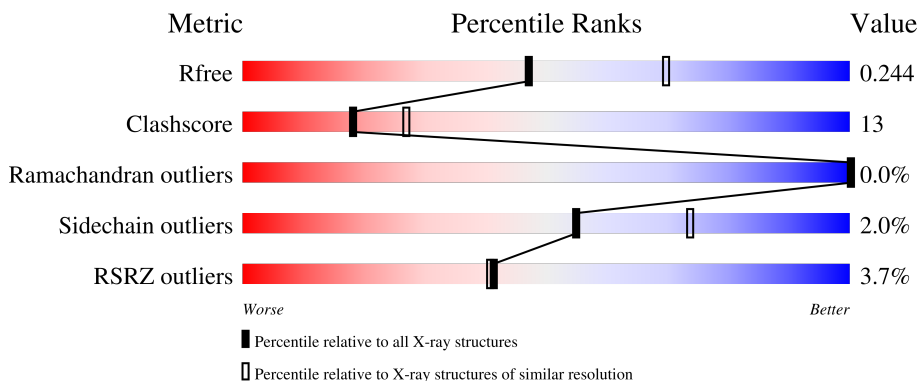
# 1 Overall quality at a glance

The following experimental techniques were used to determine the structure:

*X-RAY DIFFRACTION*

The reported resolution of this entry is 2.40 Å.

Percentile scores (ranging between 0-100) for global validation metrics of the entry are shown in the following graphic. The table shows the number of entries on which the scores are based.




Metric	Whole archive (#Entries)	Similar resolution (#Entries, resolution range(Å))
$R_{free}$	130704	3907 (2.40-2.40)
Clashscore	141614	4398 (2.40-2.40)
Ramachandran outliers	138981	4318 (2.40-2.40)
Sidechain outliers	138945	4319 (2.40-2.40)
RSRZ outliers	127900	3811 (2.40-2.40)

The table below summarises the geometric issues observed across the polymeric chains and their fit to the electron density. The red, orange, yellow and green segments of the lower bar indicate the fraction of residues that contain outliers for  $\geq 3$ , 2, 1 and 0 types of geometric quality criteria respectively. A grey segment represents the fraction of residues that are not modelled. The numeric value for each fraction is indicated below the corresponding segment, with a dot representing fractions  $\leq 5\%$ . The upper red bar (where present) indicates the fraction of residues that have poor fit to the electron density. The numeric value is given above the bar.

Mol	Chain	Length	Quality of chain
1	A	451	 2% 73% 23% •
1	C	451	 2% 80% 17% •
2	B	445	 2% 65% 28% 6% •
2	D	445	 2% 64% 30% 5% •
3	E	143	 67% 15% 18% •

*Continued on next page...*

*Continued from previous page...*

Mol	Chain	Length	Quality of chain
4	F	384	 <p>A horizontal bar chart representing the quality of chain. The bar is divided into four segments: a red segment on the left labeled '13%', a green segment labeled '51%', a yellow segment labeled '26%', and a grey segment on the right labeled '22%'. A small black dot is visible on the yellow segment.</p>

## 2 Entry composition [i](#)

There are 12 unique types of molecules in this entry. The entry contains 17322 atoms, of which 49 are hydrogens and 0 are deuteriums.

In the tables below, the ZeroOcc column contains the number of atoms modelled with zero occupancy, the AltConf column contains the number of residues with at least one atom in alternate conformation and the Trace column contains the number of residues modelled with at most 2 atoms.

- Molecule 1 is a protein called Tubulin alpha-1B chain.

Mol	Chain	Residues	Atoms					ZeroOcc	AltConf	Trace
			Total	C	N	O	S			
1	A	437	Total	C	N	O	S	0	6	0
			3442	2185	582	652	23			
1	C	437	Total	C	N	O	S	0	7	0
			3442	2182	581	655	24			

- Molecule 2 is a protein called Tubulin beta-2B chain.

Mol	Chain	Residues	Atoms					ZeroOcc	AltConf	Trace
			Total	C	N	O	S			
2	B	417	Total	C	N	O	S	0	2	0
			3287	2068	558	634	27			
2	D	422	Total	C	N	O	S	0	2	0
			3323	2089	563	644	27			

- Molecule 3 is a protein called Stathmin-4.

Mol	Chain	Residues	Atoms					ZeroOcc	AltConf	Trace
			Total	C	N	O	S			
3	E	117	Total	C	N	O	S	0	0	0
			970	599	177	190	4			

There are 2 discrepancies between the modelled and reference sequences:

Chain	Residue	Modelled	Actual	Comment	Reference
E	3	MET	-	initiating methionine	UNP P63043
E	4	ALA	-	expression tag	UNP P63043

- Molecule 4 is a protein called Tubulin-tyrosine ligase.

Mol	Chain	Residues	Atoms					ZeroOcc	AltConf	Trace
			Total	C	N	O	S			
4	F	298	Total	C	N	O	S	0	5	0
			2460	1596	409	443	12			

There are 6 discrepancies between the modelled and reference sequences:

Chain	Residue	Modelled	Actual	Comment	Reference
F	379	HIS	-	expression tag	UNP E1BQ43
F	380	HIS	-	expression tag	UNP E1BQ43
F	381	HIS	-	expression tag	UNP E1BQ43
F	382	HIS	-	expression tag	UNP E1BQ43
F	383	HIS	-	expression tag	UNP E1BQ43
F	384	HIS	-	expression tag	UNP E1BQ43

- Molecule 5 is GUANOSINE-5'-TRIPHOSPHATE (three-letter code: GTP) (formula:  $C_{10}H_{16}N_5O_{14}P_3$ ).



Mol	Chain	Residues	Atoms					ZeroOcc	AltConf
			Total	C	N	O	P		
5	A	1	Total	C	N	O	P	0	0
			32	10	5	14	3		
5	C	1	Total	C	N	O	P	0	0
			32	10	5	14	3		

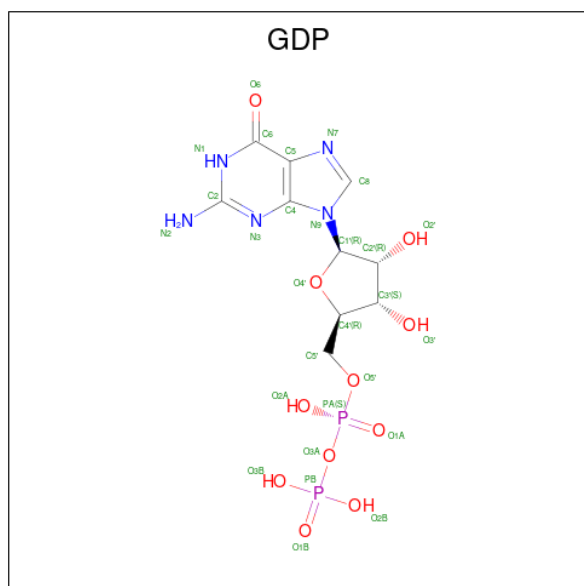
- Molecule 6 is MAGNESIUM ION (three-letter code: MG) (formula: Mg).

Mol	Chain	Residues	Atoms		ZeroOcc	AltConf
			Total	Mg		
6	A	1	Total	Mg	0	0
			1	1		
6	B	1	Total	Mg	0	0
			1	1		
6	C	1	Total	Mg	0	0
			1	1		

- Molecule 7 is CALCIUM ION (three-letter code: CA) (formula: Ca).

Mol	Chain	Residues	Atoms	ZeroOcc	AltConf
7	A	1	Total Ca 1 1	0	0

- Molecule 8 is GUANOSINE-5'-DIPHOSPHATE (three-letter code: GDP) (formula:  $C_{10}H_{15}N_5O_{11}P_2$ ).



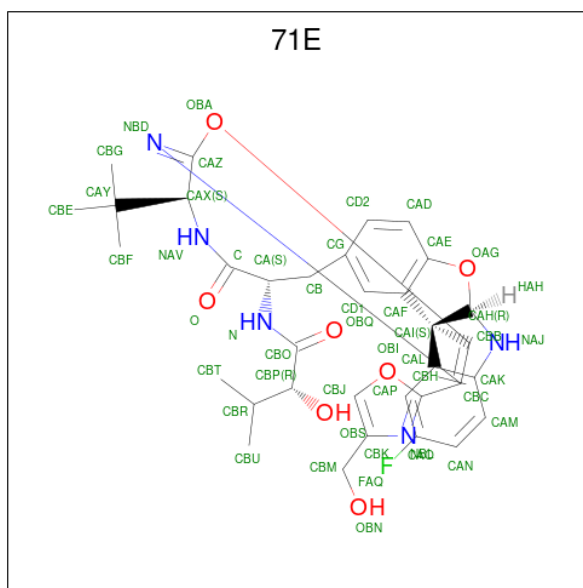
Mol	Chain	Residues	Atoms	ZeroOcc	AltConf
8	B	1	Total C N O P 28 10 5 11 2	0	0
8	D	1	Total C N O P 28 10 5 11 2	0	0

- Molecule 9 is 2-(N-MORPHOLINO)-ETHANESULFONIC ACID (three-letter code: MES) (formula:  $C_6H_{13}NO_4S$ ).



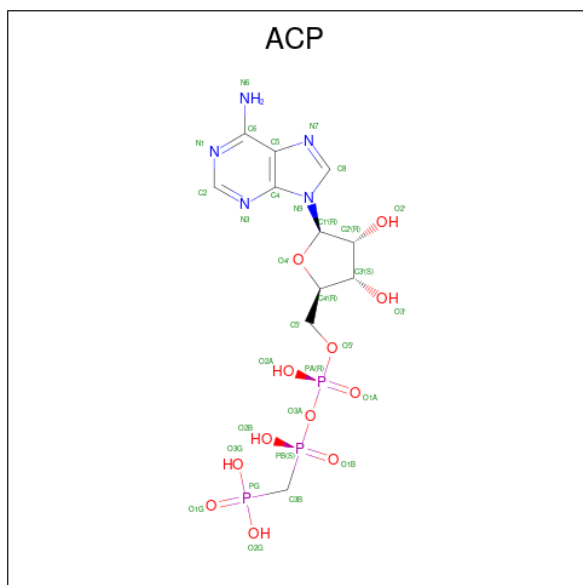
Mol	Chain	Residues	Atoms					ZeroOcc	AltConf	
			Total	C	H	N	O			S
9	B	1	25	6	13	1	4	1	0	0

- Molecule 10 is DZ 2384 (three-letter code: 71E) (formula:  $C_{34}H_{36}FN_5O_7$ ).



Mol	Chain	Residues	Atoms					ZeroOcc	AltConf	
			Total	C	F	H	N			O
10	C	1	83	34	1	36	5	7	0	0

- Molecule 11 is PHOSPHOMETHYLPHOSPHONIC ACID ADENYLATE ESTER (three-letter code: ACP) (formula:  $C_{11}H_{18}N_5O_{12}P_3$ ).



Mol	Chain	Residues	Atoms					ZeroOcc	AltConf
			Total	C	N	O	P		
11	F	1	31	11	5	12	3	0	0

- Molecule 12 is water.

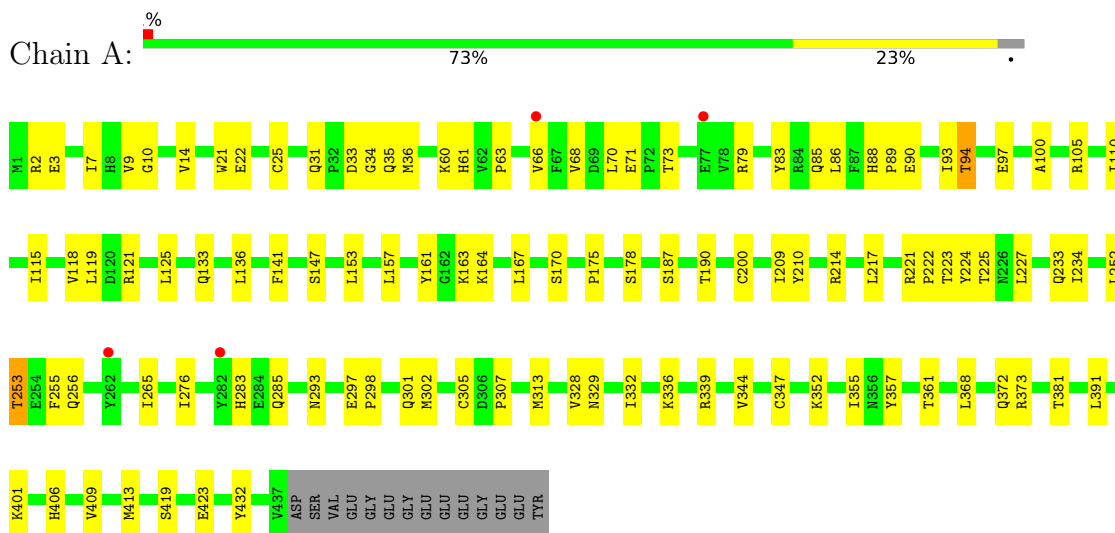
Mol	Chain	Residues	Atoms		ZeroOcc	AltConf
12	A	32	Total	O	0	0
			32	32		
12	B	30	Total	O	0	0
			30	30		
12	C	66	Total	O	0	0
			66	66		
12	D	7	Total	O	0	0
			7	7		



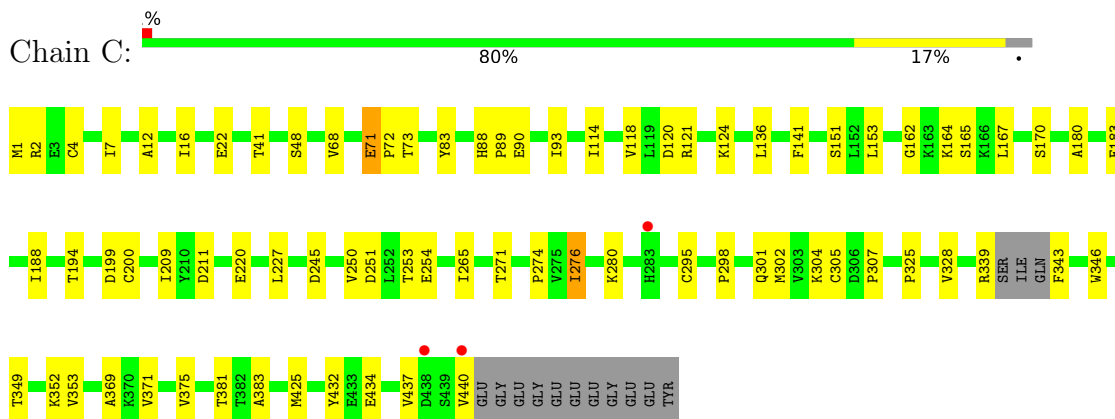
### 3 Residue-property plots [i](#)

These plots are drawn for all protein, RNA, DNA and oligosaccharide chains in the entry. The first graphic for a chain summarises the proportions of the various outlier classes displayed in the second graphic. The second graphic shows the sequence view annotated by issues in geometry and electron density. Residues are color-coded according to the number of geometric quality criteria for which they contain at least one outlier: green = 0, yellow = 1, orange = 2 and red = 3 or more. A red dot above a residue indicates a poor fit to the electron density ( $RSRZ > 2$ ). Stretches of 2 or more consecutive residues without any outlier are shown as a green connector. Residues present in the sample, but not in the model, are shown in grey.

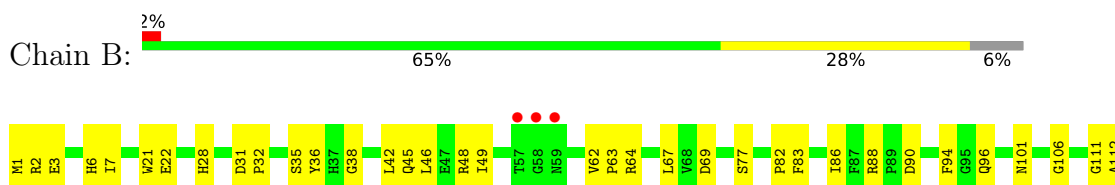
- Molecule 1: Tubulin alpha-1B chain

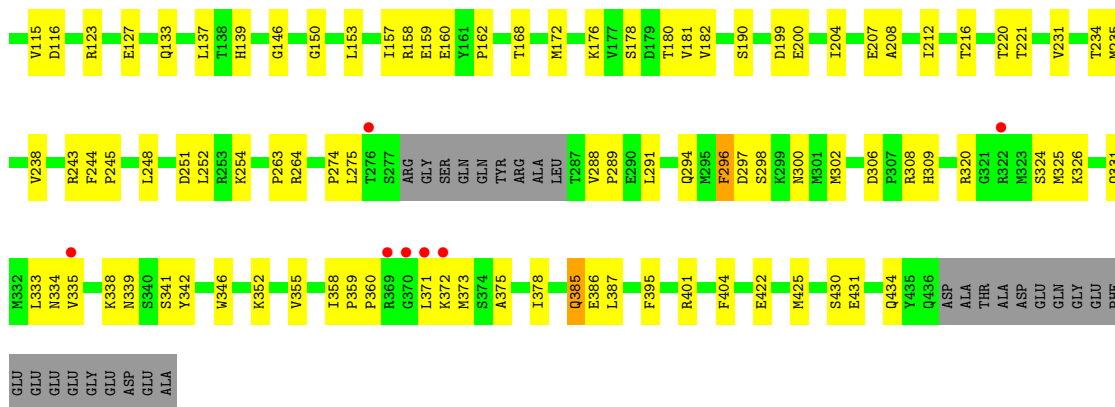


- Molecule 1: Tubulin alpha-1B chain

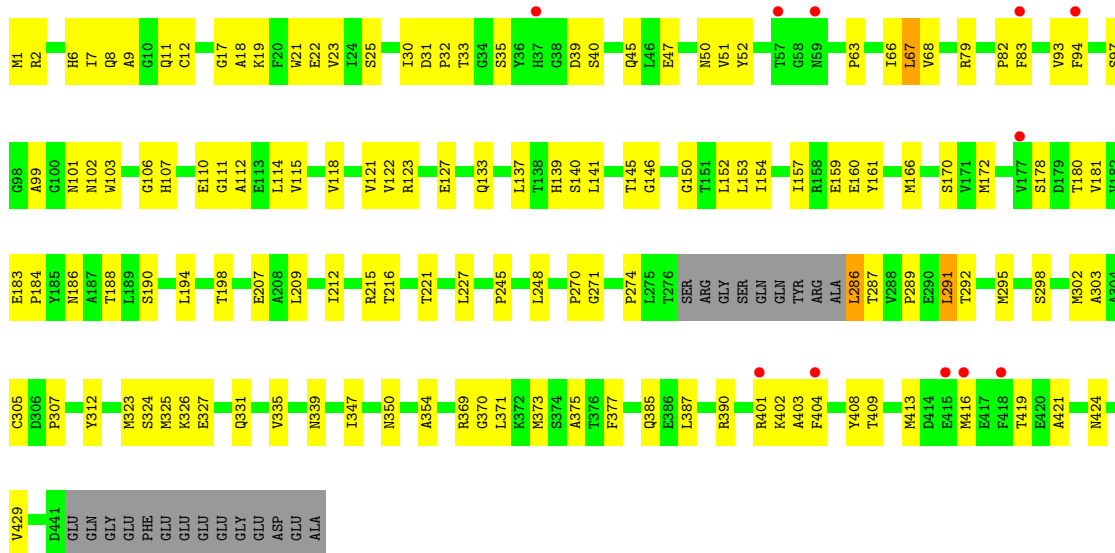


- Molecule 2: Tubulin beta-2B chain

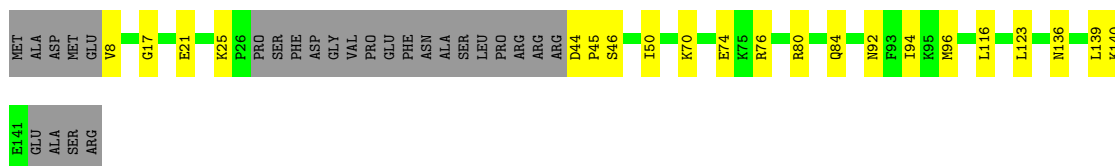




• Molecule 2: Tubulin beta-2B chain

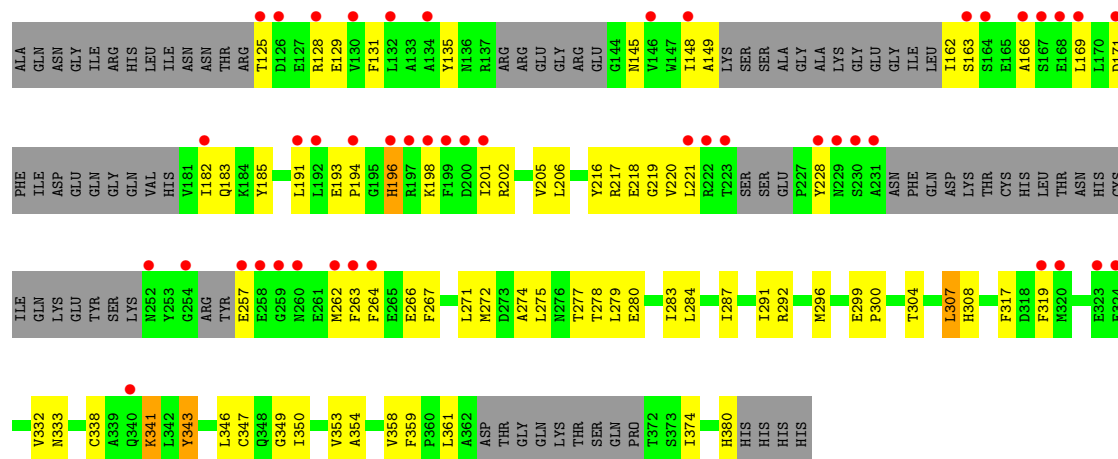


• Molecule 3: Stathmin-4



• Molecule 4: Tubulin-tyrosine ligase





## 4 Data and refinement statistics

Property	Value	Source
Space group	P 21 21 21	Depositor
Cell constants a, b, c, $\alpha$ , $\beta$ , $\gamma$	103.16Å 154.70Å 180.32Å 90.00° 90.00° 90.00°	Depositor
Resolution (Å)	77.35 – 2.40 77.35 – 2.40	Depositor EDS
% Data completeness (in resolution range)	99.8 (77.35-2.40) 99.8 (77.35-2.40)	Depositor EDS
$R_{merge}$	0.11	Depositor
$R_{sym}$	(Not available)	Depositor
$\langle I/\sigma(I) \rangle$ <sup>1</sup>	1.08 (at 2.40Å)	Xtrriage
Refinement program	PHENIX 1.9_1692	Depositor
R, $R_{free}$	0.188 , 0.241 0.195 , 0.244	Depositor DCC
$R_{free}$ test set	5650 reflections (5.00%)	wwPDB-VP
Wilson B-factor (Å <sup>2</sup> )	64.7	Xtrriage
Anisotropy	0.278	Xtrriage
Bulk solvent $k_{sol}$ (e/Å <sup>3</sup> ), $B_{sol}$ (Å <sup>2</sup> )	0.30 , 54.5	EDS
L-test for twinning <sup>2</sup>	$\langle  L  \rangle = 0.49$ , $\langle L^2 \rangle = 0.32$	Xtrriage
Estimated twinning fraction	No twinning to report.	Xtrriage
$F_o, F_c$ correlation	0.96	EDS
Total number of atoms	17322	wwPDB-VP
Average B, all atoms (Å <sup>2</sup> )	84.0	wwPDB-VP

Xtrriage's analysis on translational NCS is as follows: *The largest off-origin peak in the Patterson function is 2.35% of the height of the origin peak. No significant pseudotranslation is detected.*

<sup>1</sup>Intensities estimated from amplitudes.

<sup>2</sup>Theoretical values of  $\langle |L| \rangle$ ,  $\langle L^2 \rangle$  for acentric reflections are 0.5, 0.333 respectively for untwinned datasets, and 0.375, 0.2 for perfectly twinned datasets.

## 5 Model quality [i](#)

### 5.1 Standard geometry [i](#)

Bond lengths and bond angles in the following residue types are not validated in this section: MES, MG, GDP, ACP, CA, GTP, 71E

The Z score for a bond length (or angle) is the number of standard deviations the observed value is removed from the expected value. A bond length (or angle) with  $|Z| > 5$  is considered an outlier worth inspection. RMSZ is the root-mean-square of all Z scores of the bond lengths (or angles).

Mol	Chain	Bond lengths		Bond angles	
		RMSZ	# Z  >5	RMSZ	# Z  >5
1	A	0.27	0/3538	0.42	0/4804
1	C	0.29	0/3540	0.46	0/4807
2	B	0.28	0/3366	0.43	0/4559
2	D	0.25	0/3402	0.42	0/4609
3	E	0.26	0/976	0.36	0/1292
4	F	0.23	0/2527	0.39	0/3413
All	All	0.27	0/17349	0.42	0/23484

There are no bond length outliers.

There are no bond angle outliers.

There are no chirality outliers.

There are no planarity outliers.

### 5.2 Too-close contacts [i](#)

In the following table, the Non-H and H(model) columns list the number of non-hydrogen atoms and hydrogen atoms in the chain respectively. The H(added) column lists the number of hydrogen atoms added and optimized by MolProbity. The Clashes column lists the number of clashes within the asymmetric unit, whereas Symm-Clashes lists symmetry-related clashes.

Mol	Chain	Non-H	H(model)	H(added)	Clashes	Symm-Clashes
1	A	3442	0	3379	90	0
1	C	3442	0	3369	62	0
2	B	3287	0	3174	100	0
2	D	3323	0	3208	104	0
3	E	970	0	990	21	0
4	F	2460	0	2464	99	0
5	A	32	0	12	0	0

*Continued on next page...*

Continued from previous page...

Mol	Chain	Non-H	H(model)	H(added)	Clashes	Symm-Clashes
5	C	32	0	12	1	0
6	A	1	0	0	0	0
6	B	1	0	0	0	0
6	C	1	0	0	0	0
7	A	1	0	0	0	0
8	B	28	0	12	0	0
8	D	28	0	12	5	0
9	B	12	13	13	1	0
10	C	47	36	0	2	0
11	F	31	0	14	1	0
12	A	32	0	0	0	0
12	B	30	0	0	1	0
12	C	66	0	0	1	0
12	D	7	0	0	0	0
All	All	17273	49	16659	452	0

The all-atom clashscore is defined as the number of clashes found per 1000 atoms (including hydrogen atoms). The all-atom clashscore for this structure is 13.

The worst 5 of 452 close contacts within the same asymmetric unit are listed below, sorted by their clash magnitude.

Atom-1	Atom-2	Interatomic distance (Å)	Clash overlap (Å)
2:B:333:LEU:HD21	4:F:58:LEU:HD13	1.43	1.00
2:B:42:LEU:HD23	2:B:358:ILE:HD11	1.44	0.98
4:F:148:ILE:HA	4:F:162:ILE:HG22	1.47	0.97
1:C:71:GLU:HG2	1:C:72:PRO:HD2	1.48	0.96
1:A:70:LEU:HD13	1:A:110:ILE:HG21	1.50	0.93

There are no symmetry-related clashes.

## 5.3 Torsion angles [i](#)

### 5.3.1 Protein backbone [i](#)

In the following table, the Percentiles column shows the percent Ramachandran outliers of the chain as a percentile score with respect to all X-ray entries followed by that with respect to entries of similar resolution.

The Analysed column shows the number of residues for which the backbone conformation was analysed, and the total number of residues.

Mol	Chain	Analysed	Favoured	Allowed	Outliers	Percentiles	
1	A	441/451 (98%)	422 (96%)	19 (4%)	0	100	100
1	C	440/451 (98%)	424 (96%)	16 (4%)	0	100	100
2	B	415/445 (93%)	398 (96%)	17 (4%)	0	100	100
2	D	420/445 (94%)	399 (95%)	20 (5%)	1 (0%)	47	62
3	E	112/143 (78%)	110 (98%)	2 (2%)	0	100	100
4	F	285/384 (74%)	267 (94%)	18 (6%)	0	100	100
All	All	2113/2319 (91%)	2020 (96%)	92 (4%)	1 (0%)	100	100

All (1) Ramachandran outliers are listed below:

Mol	Chain	Res	Type
2	D	401	ARG

### 5.3.2 Protein sidechains [i](#)

In the following table, the Percentiles column shows the percent sidechain outliers of the chain as a percentile score with respect to all X-ray entries followed by that with respect to entries of similar resolution.

The Analysed column shows the number of residues for which the sidechain conformation was analysed, and the total number of residues.

Mol	Chain	Analysed	Rotameric	Outliers	Percentiles	
1	A	374/379 (99%)	370 (99%)	4 (1%)	73	87
1	C	375/379 (99%)	372 (99%)	3 (1%)	81	91
2	B	363/383 (95%)	353 (97%)	10 (3%)	43	63
2	D	367/383 (96%)	356 (97%)	11 (3%)	41	61
3	E	105/127 (83%)	104 (99%)	1 (1%)	76	88
4	F	272/342 (80%)	264 (97%)	8 (3%)	42	62
All	All	1856/1993 (93%)	1819 (98%)	37 (2%)	55	74

5 of 37 residues with a non-rotameric sidechain are listed below:

Mol	Chain	Res	Type
3	E	116	LEU
4	F	341	LYS
4	F	28	LYS
4	F	196	HIS

*Continued on next page...*

*Continued from previous page...*

Mol	Chain	Res	Type
2	B	425	MET

Sometimes sidechains can be flipped to improve hydrogen bonding and reduce clashes. 5 of 14 such sidechains are listed below:

Mol	Chain	Res	Type
2	D	192	HIS
2	D	197	ASN
4	F	333	ASN
4	F	26	GLN
4	F	196	HIS

### 5.3.3 RNA [i](#)

There are no RNA molecules in this entry.

## 5.4 Non-standard residues in protein, DNA, RNA chains [i](#)

There are no non-standard protein/DNA/RNA residues in this entry.

## 5.5 Carbohydrates [i](#)

There are no monosaccharides in this entry.

## 5.6 Ligand geometry [i](#)

Of 11 ligands modelled in this entry, 4 are monoatomic - leaving 7 for Mogul analysis.

In the following table, the Counts columns list the number of bonds (or angles) for which Mogul statistics could be retrieved, the number of bonds (or angles) that are observed in the model and the number of bonds (or angles) that are defined in the Chemical Component Dictionary. The Link column lists molecule types, if any, to which the group is linked. The Z score for a bond length (or angle) is the number of standard deviations the observed value is removed from the expected value. A bond length (or angle) with  $|Z| > 2$  is considered an outlier worth inspection. RMSZ is the root-mean-square of all Z scores of the bond lengths (or angles).

Mol	Type	Chain	Res	Link	Bond lengths			Bond angles		
					Counts	RMSZ	# Z  > 2	Counts	RMSZ	# Z  > 2
5	GTP	A	501	6	26,34,34	1.18	1 (3%)	32,54,54	1.46	6 (18%)
8	GDP	B	501	-	24,30,30	1.03	1 (4%)	30,47,47	1.11	4 (13%)



Mol	Type	Chain	Res	Link	Bond lengths			Bond angles		
					Counts	RMSZ	# Z  > 2	Counts	RMSZ	# Z  > 2
11	ACP	F	401	-	27,33,33	1.96	7 (25%)	32,52,52	1.41	4 (12%)
10	71E	C	503	-	43,53,53	2.83	17 (39%)	54,83,83	1.55	11 (20%)
5	GTP	C	501	6	26,34,34	1.20	2 (7%)	32,54,54	1.35	5 (15%)
9	MES	B	502	-	12,12,12	2.35	1 (8%)	14,16,16	1.37	3 (21%)
8	GDP	D	501	-	24,30,30	0.97	1 (4%)	30,47,47	1.13	3 (10%)

In the following table, the Chirals column lists the number of chiral outliers, the number of chiral centers analysed, the number of these observed in the model and the number defined in the Chemical Component Dictionary. Similar counts are reported in the Torsion and Rings columns. '-' means no outliers of that kind were identified.

Mol	Type	Chain	Res	Link	Chirals	Torsions	Rings
5	GTP	A	501	6	-	8/18/38/38	0/3/3/3
8	GDP	B	501	-	-	5/12/32/32	0/3/3/3
11	ACP	F	401	-	-	8/15/38/38	0/3/3/3
10	71E	C	503	-	-	4/30/72/72	0/6/7/7
5	GTP	C	501	6	-	7/18/38/38	0/3/3/3
9	MES	B	502	-	-	5/6/14/14	0/1/1/1
8	GDP	D	501	-	-	1/12/32/32	0/3/3/3

The worst 5 of 30 bond length outliers are listed below:

Mol	Chain	Res	Type	Atoms	Z	Observed(Å)	Ideal(Å)
9	B	502	MES	C8-S	-7.87	1.66	1.77
10	C	503	71E	CD1-CAF	6.64	1.49	1.39
10	C	503	71E	CAP-CAL	6.37	1.49	1.39
10	C	503	71E	C-NAV	5.45	1.46	1.34
11	F	401	ACP	PG-O1G	5.33	1.61	1.50

The worst 5 of 36 bond angle outliers are listed below:

Mol	Chain	Res	Type	Atoms	Z	Observed(°)	Ideal(°)
10	C	503	71E	CG-CB-CA	-4.26	101.63	113.39
11	F	401	ACP	PB-O3A-PA	-3.77	120.61	132.56
10	C	503	71E	CAD-CAE-CAF	-3.57	118.74	122.89
11	F	401	ACP	C3'-C2'-C1'	3.24	105.85	100.98
5	A	501	GTP	C5-C6-N1	3.20	119.61	113.95

There are no chirality outliers.

5 of 38 torsion outliers are listed below:

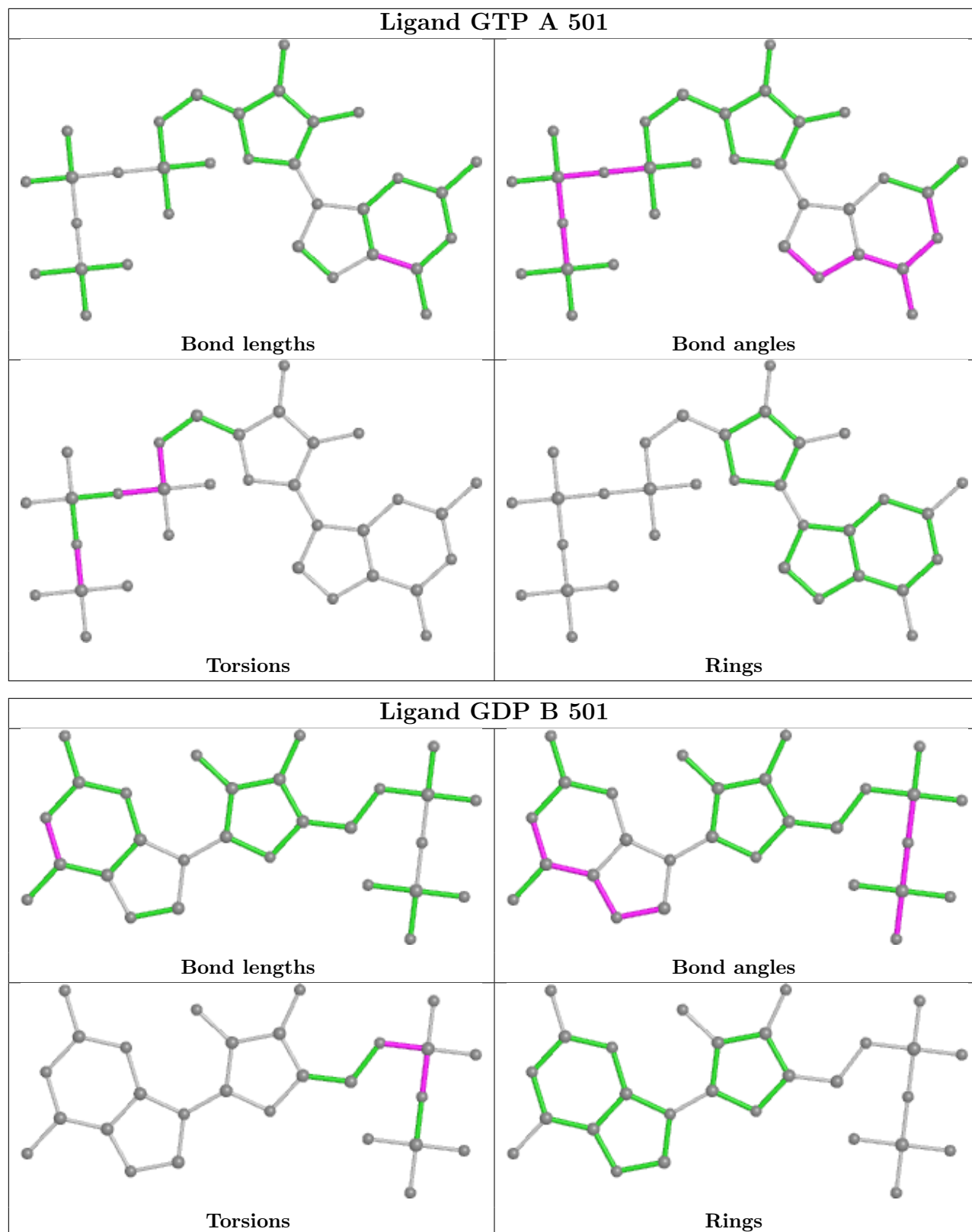
Mol	Chain	Res	Type	Atoms
5	A	501	GTP	PB-O3B-PG-O2G
5	A	501	GTP	C5'-O5'-PA-O1A
5	A	501	GTP	C5'-O5'-PA-O2A
5	C	501	GTP	C5'-O5'-PA-O1A
5	C	501	GTP	C5'-O5'-PA-O2A

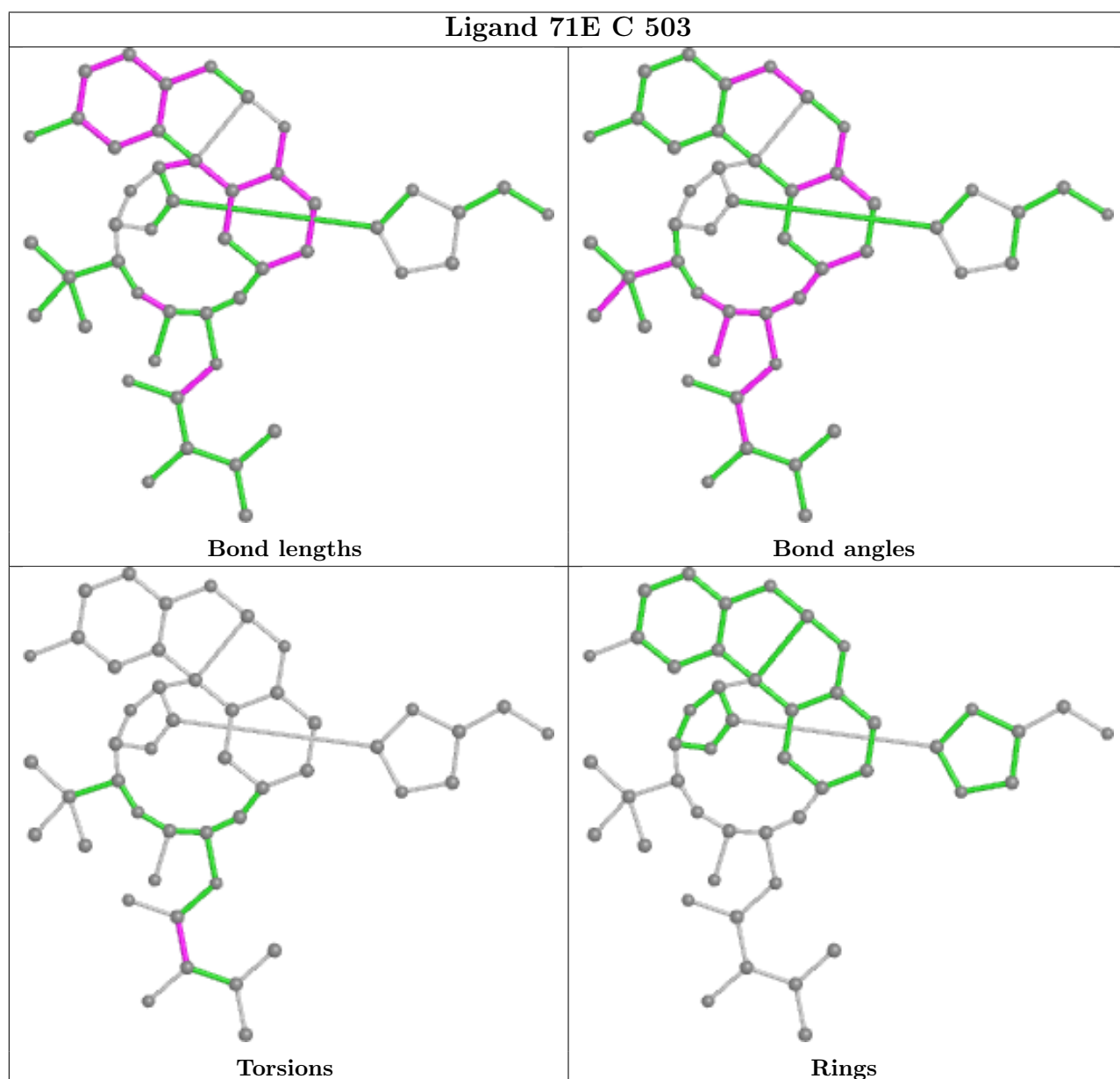
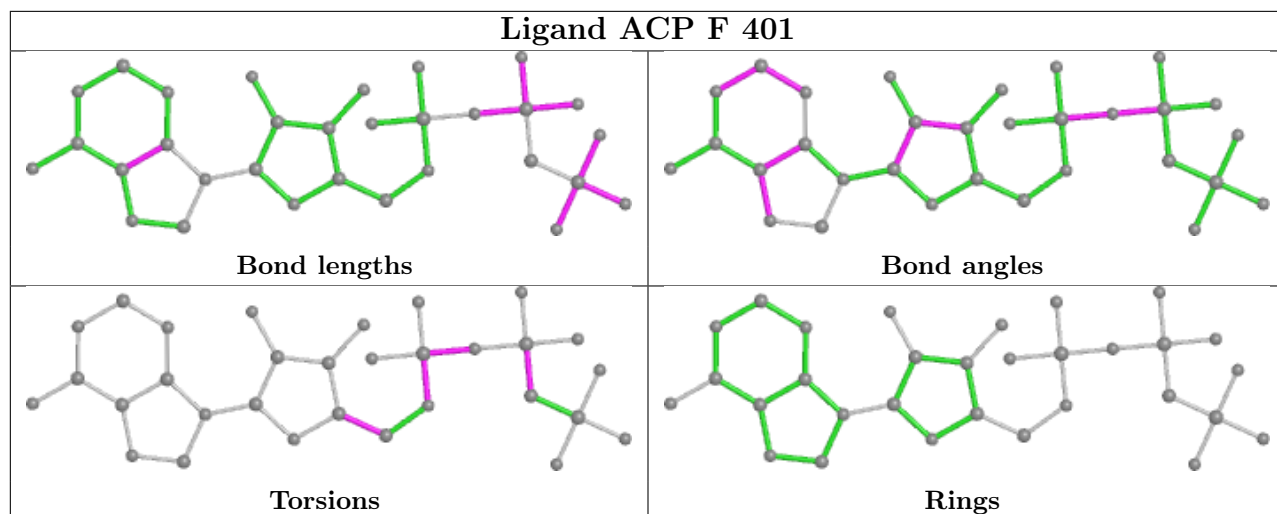
There are no ring outliers.

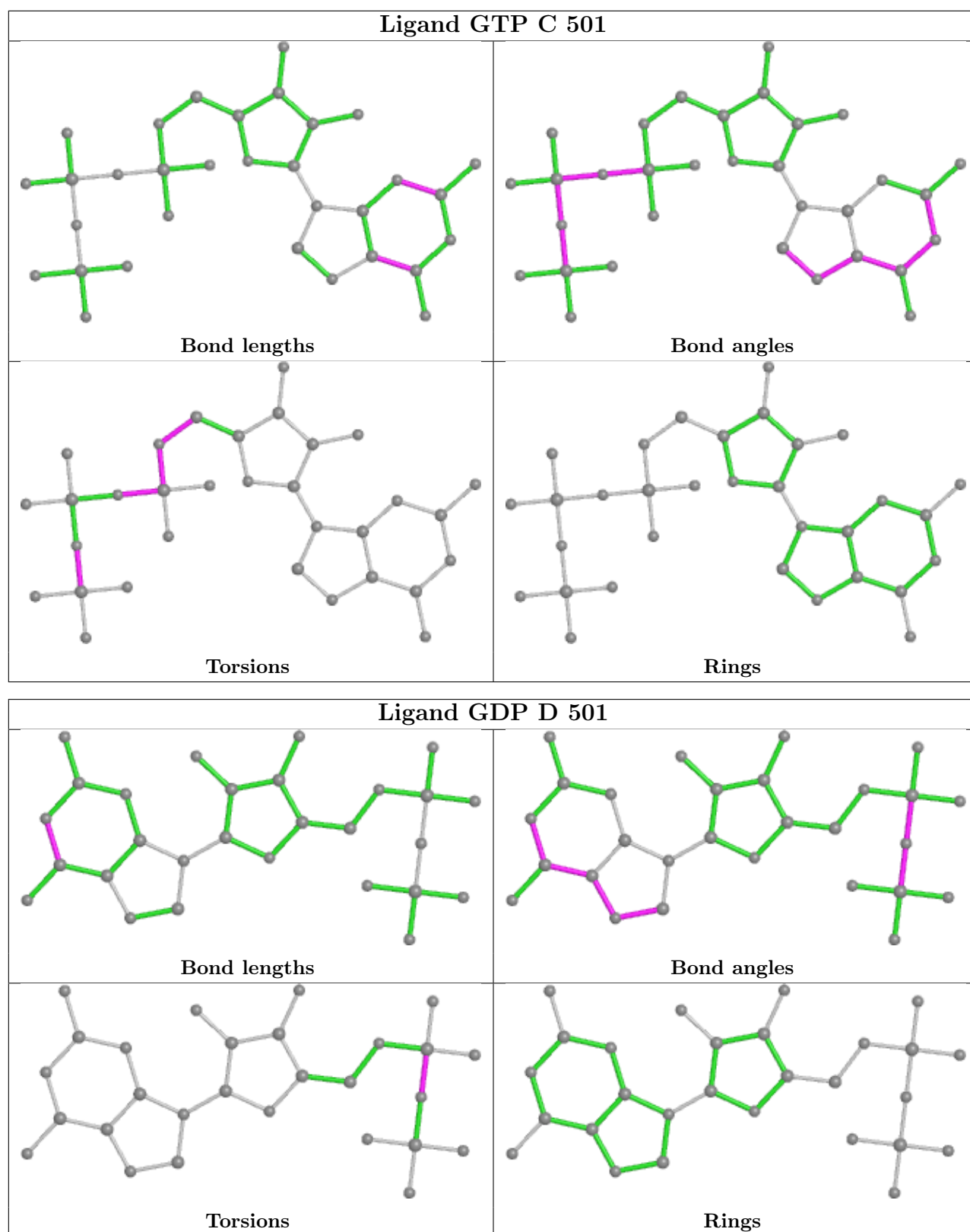
5 monomers are involved in 10 short contacts:

Mol	Chain	Res	Type	Clashes	Symm-Clashes
11	F	401	ACP	1	0
10	C	503	71E	2	0
5	C	501	GTP	1	0
9	B	502	MES	1	0
8	D	501	GDP	5	0

The following is a two-dimensional graphical depiction of Mogul quality analysis of bond lengths, bond angles, torsion angles, and ring geometry for all instances of the Ligand of Interest. In addition, ligands with molecular weight > 250 and outliers as shown on the validation Tables will also be included. For torsion angles, if less than 5% of the Mogul distribution of torsion angles is within 10 degrees of the torsion angle in question, then that torsion angle is considered an outlier. Any bond that is central to one or more torsion angles identified as an outlier by Mogul will be highlighted in the graph. For rings, the root-mean-square deviation (RMSD) between the ring in question and similar rings identified by Mogul is calculated over all ring torsion angles. If the average RMSD is greater than 60 degrees and the minimal RMSD between the ring in question and any Mogul-identified rings is also greater than 60 degrees, then that ring is considered an outlier. The outliers are highlighted in purple. The color gray indicates Mogul did not find sufficient equivalents in the CSD to analyse the geometry.







## 5.7 Other polymers [i](#)

There are no such residues in this entry.

## 5.8 Polymer linkage issues

The following chains have linkage breaks:

Mol	Chain	Number of breaks
3	E	1

All chain breaks are listed below:

Model	Chain	Residue-1	Atom-1	Residue-2	Atom-2	Distance (Å)
1	E	140:LYS	C	141:GLU	N	3.18

## 6 Fit of model and data [i](#)

### 6.1 Protein, DNA and RNA chains [i](#)

In the following table, the column labelled '#RSRZ > 2' contains the number (and percentage) of RSRZ outliers, followed by percent RSRZ outliers for the chain as percentile scores relative to all X-ray entries and entries of similar resolution. The OWAB column contains the minimum, median, 95<sup>th</sup> percentile and maximum values of the occupancy-weighted average B-factor per residue. The column labelled 'Q < 0.9' lists the number of (and percentage) of residues with an average occupancy less than 0.9.

Mol	Chain	Analysed	<RSRZ>	#RSRZ>2	OWAB(Å <sup>2</sup> )	Q<0.9
1	A	437/451 (96%)	-0.24	4 (0%) 84 82	49, 74, 118, 168	0
1	C	437/451 (96%)	-0.11	3 (0%) 87 86	43, 60, 93, 140	0
2	B	417/445 (93%)	0.12	10 (2%) 59 57	46, 75, 133, 175	2 (0%)
2	D	422/445 (94%)	-0.07	11 (2%) 56 54	54, 87, 128, 180	6 (1%)
3	E	117/143 (81%)	-0.03	0 100 100	62, 88, 129, 149	0
4	F	298/384 (77%)	0.59	51 (17%) 1 1	72, 104, 165, 195	0
All	All	2128/2319 (91%)	0.02	79 (3%) 41 41	43, 79, 133, 195	8 (0%)

The worst 5 of 79 RSRZ outliers are listed below:

Mol	Chain	Res	Type	RSRZ
2	D	401	ARG	7.1
1	A	282	TYR	5.6
4	F	101	TYR	5.6
4	F	231	ALA	5.4
4	F	169	LEU	5.3

### 6.2 Non-standard residues in protein, DNA, RNA chains [i](#)

There are no non-standard protein/DNA/RNA residues in this entry.

### 6.3 Carbohydrates [i](#)

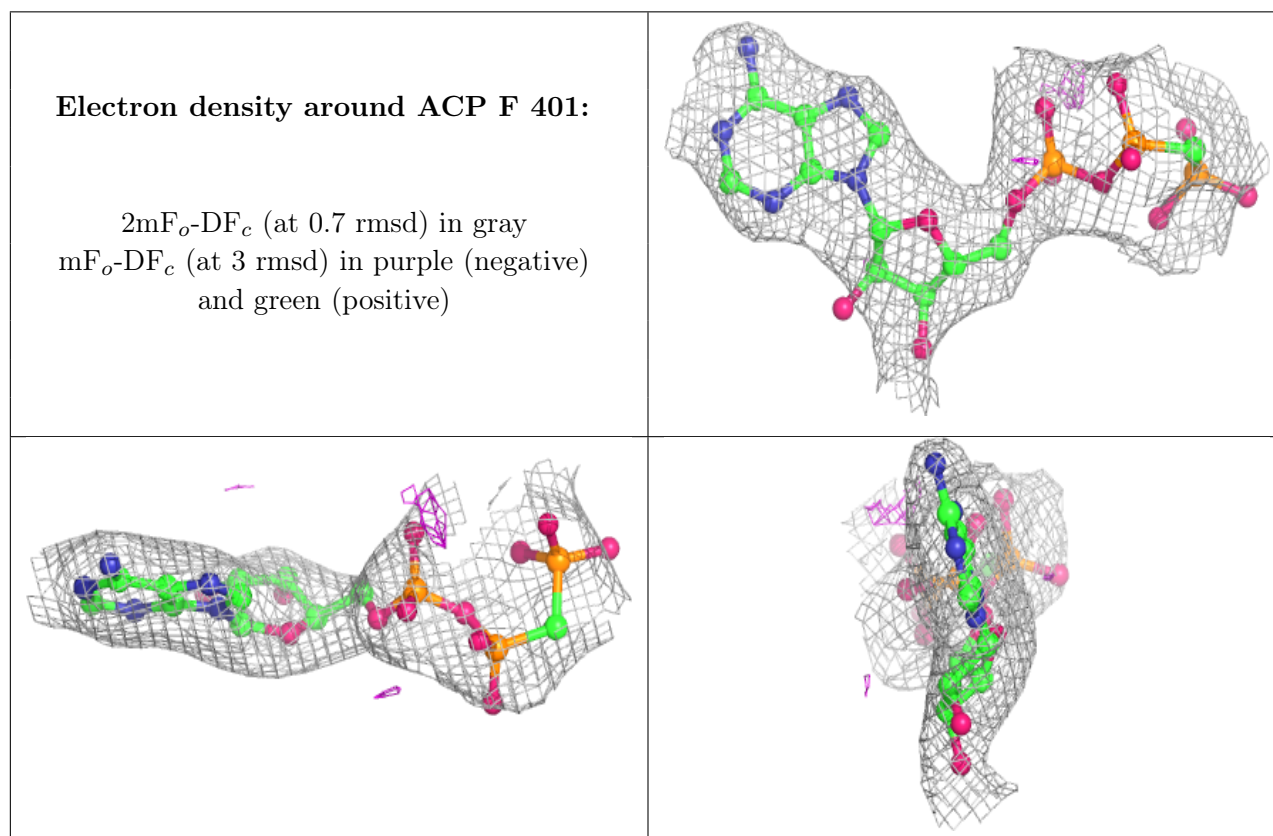
There are no monosaccharides in this entry.

## 6.4 Ligands [i](#)

In the following table, the Atoms column lists the number of modelled atoms in the group and the number defined in the chemical component dictionary. The B-factors column lists the minimum, median, 95<sup>th</sup> percentile and maximum values of B factors of atoms in the group. The column labelled 'Q<0.9' lists the number of atoms with occupancy less than 0.9.

Mol	Type	Chain	Res	Atoms	RSCC	RSR	B-factors(Å <sup>2</sup> )	Q<0.9
11	ACP	F	401	31/31	0.86	0.18	124,139,219,237	0
6	MG	B	503	1/1	0.90	0.33	84,84,84,84	0
9	MES	B	502	12/12	0.91	0.13	53,83,117,122	0
8	GDP	D	501	28/28	0.95	0.14	72,77,114,144	0
10	71E	C	503	47/47	0.97	0.16	36,58,79,91	0
6	MG	A	502	1/1	0.98	0.12	82,82,82,82	0
7	CA	A	503	1/1	0.98	0.08	102,102,102,102	0
5	GTP	C	501	32/32	0.99	0.17	38,48,59,66	0
6	MG	C	502	1/1	0.99	0.15	47,47,47,47	0
5	GTP	A	501	32/32	0.99	0.14	48,57,70,81	0
8	GDP	B	501	28/28	0.99	0.18	47,54,64,68	0

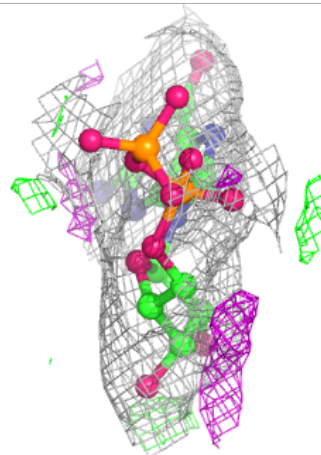
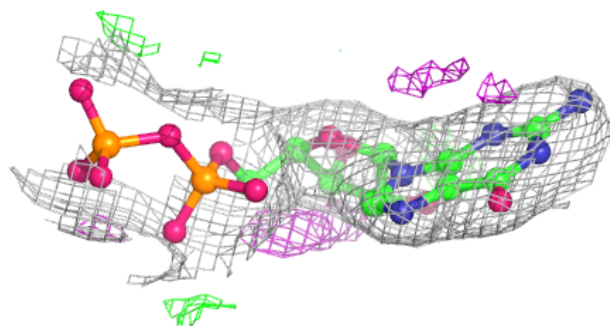
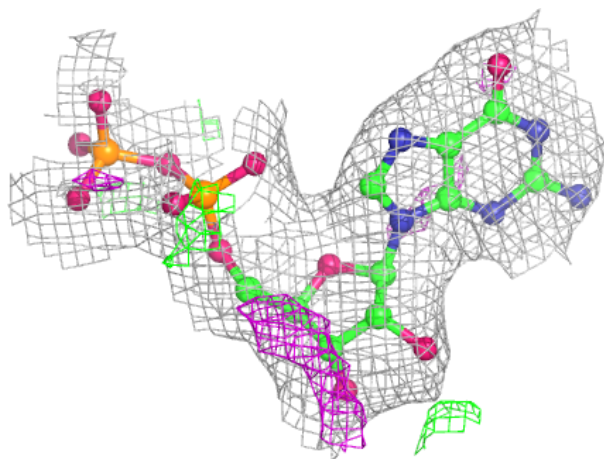
The following is a graphical depiction of the model fit to experimental electron density of all instances of the Ligand of Interest. In addition, ligands with molecular weight > 250 and outliers as shown on the geometry validation Tables will also be included. Each fit is shown from different orientation to approximate a three-dimensional view.





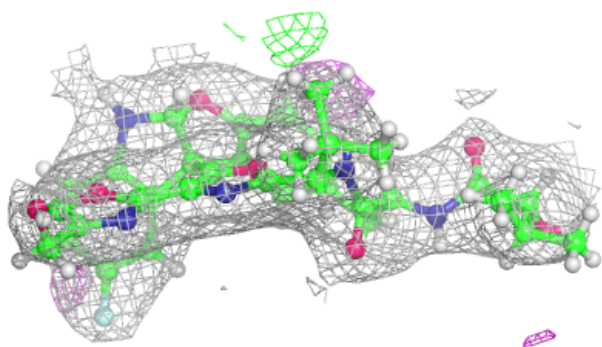
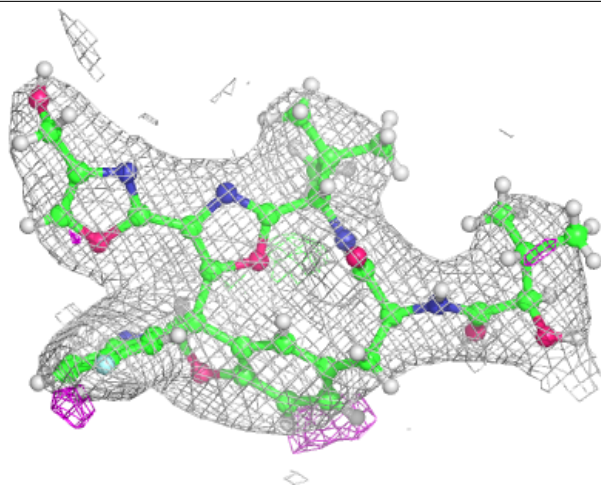
**Electron density around GDP D 501:**

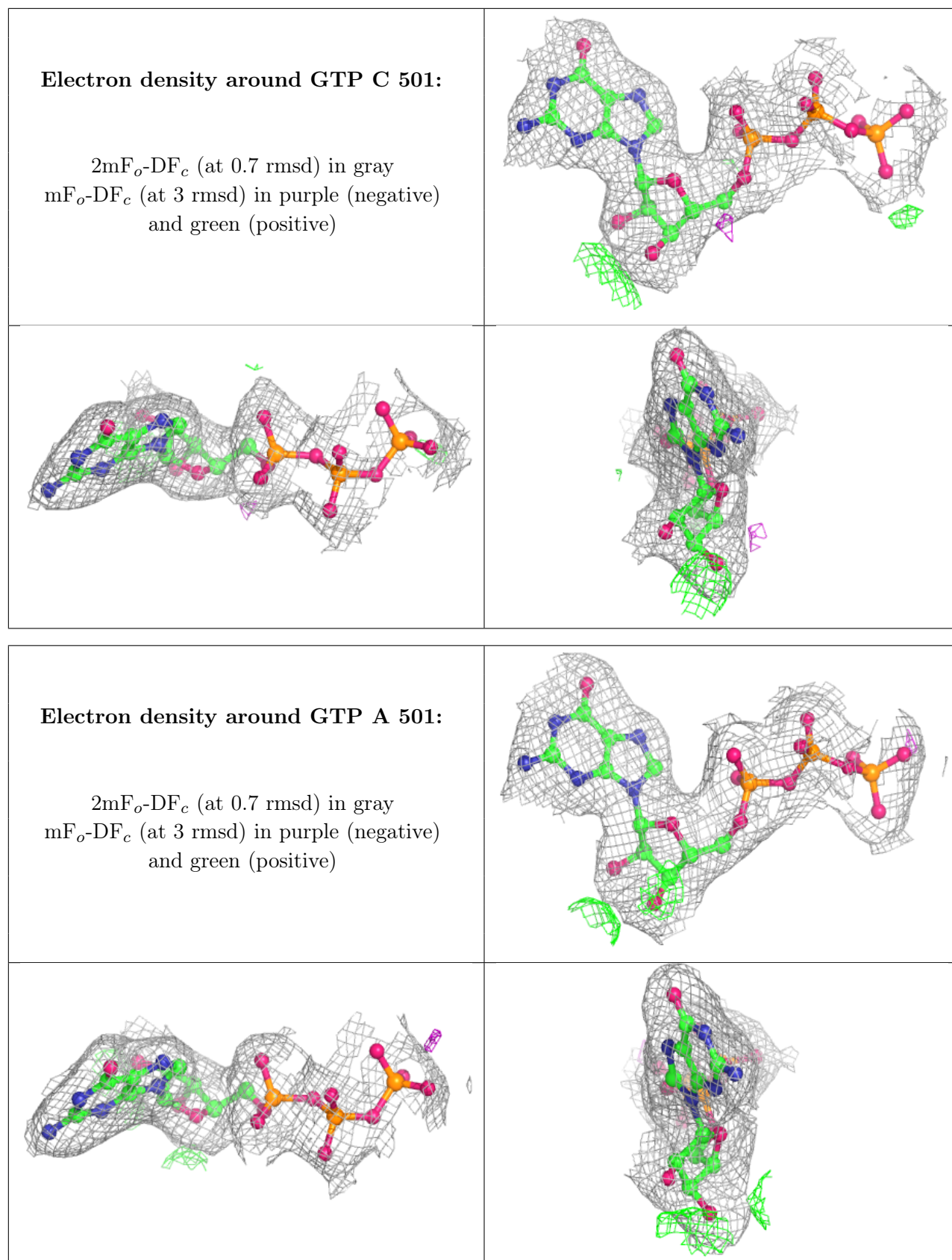
$2mF_o-DF_c$  (at 0.7 rmsd) in gray  
 $mF_o-DF_c$  (at 3 rmsd) in purple (negative)  
and green (positive)

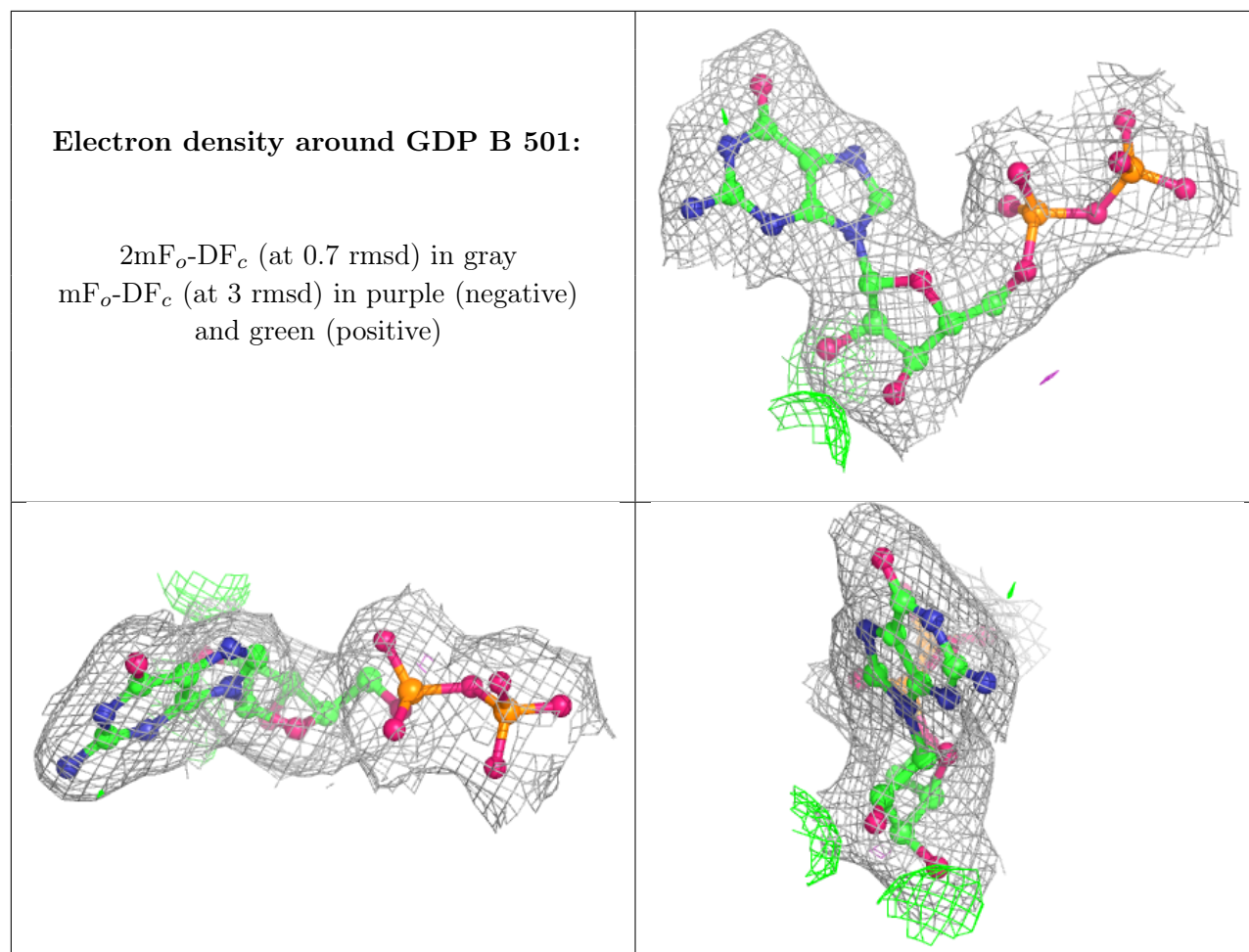


**Electron density around 71E C 503:**

$2mF_o-DF_c$  (at 0.7 rmsd) in gray  
 $mF_o-DF_c$  (at 3 rmsd) in purple (negative)  
and green (positive)







## 6.5 Other polymers [i](#)

There are no such residues in this entry.