



Full wwPDB X-ray Structure Validation Report ⓘ

Aug 28, 2023 – 03:02 AM EDT

PDB ID : 3L4M
Title : Crystal Structure of the MauG/pre-Methylamine Dehydrogenase Complex.
Authors : Jensen, L.M.R.; Wilmot, C.M.
Deposited on : 2009-12-21
Resolution : 2.02 Å(reported)

This is a Full wwPDB X-ray Structure Validation Report for a publicly released PDB entry.

We welcome your comments at validation@mail.wwpdb.org

A user guide is available at

<https://www.wwpdb.org/validation/2017/XrayValidationReportHelp>

with specific help available everywhere you see the ⓘ symbol.

The types of validation reports are described at

<http://www.wwpdb.org/validation/2017/FAQs#types>.

The following versions of software and data (see [references ⓘ](#)) were used in the production of this report:

MolProbity : 4.02b-467
Mogul : 1.8.5 (274361), CSD as541be (2020)
Xtriage (Phenix) : 1.13
EDS : 2.35
buster-report : 1.1.7 (2018)
Percentile statistics : 20191225.v01 (using entries in the PDB archive December 25th 2019)
Refmac : 5.8.0158
CCP4 : 7.0.044 (Gargrove)
Ideal geometry (proteins) : Engh & Huber (2001)
Ideal geometry (DNA, RNA) : Parkinson et al. (1996)
Validation Pipeline (wwPDB-VP) : 2.35

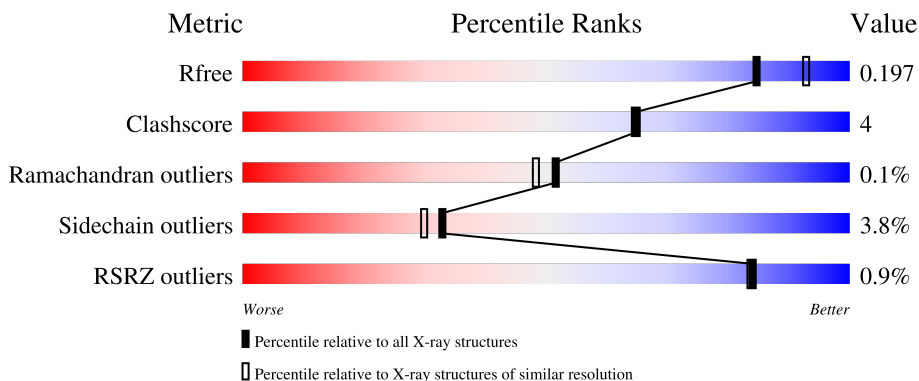
1 Overall quality at a glance i

The following experimental techniques were used to determine the structure:

X-RAY DIFFRACTION

The reported resolution of this entry is 2.02 Å.

Percentile scores (ranging between 0-100) for global validation metrics of the entry are shown in the following graphic. The table shows the number of entries on which the scores are based.



Metric	Whole archive (#Entries)	Similar resolution (#Entries, resolution range(Å))
R_{free}	130704	10434 (2.04-2.00)
Clashscore	141614	11643 (2.04-2.00)
Ramachandran outliers	138981	11493 (2.04-2.00)
Sidechain outliers	138945	11492 (2.04-2.00)
RSRZ outliers	127900	10220 (2.04-2.00)

The table below summarises the geometric issues observed across the polymeric chains and their fit to the electron density. The red, orange, yellow and green segments of the lower bar indicate the fraction of residues that contain outliers for ≥ 3 , 2, 1 and 0 types of geometric quality criteria respectively. A grey segment represents the fraction of residues that are not modelled. The numeric value for each fraction is indicated below the corresponding segment, with a dot representing fractions $\leq 5\%$. The upper red bar (where present) indicates the fraction of residues that have poor fit to the electron density. The numeric value is given above the bar.

Mol	Chain	Length	Quality of chain
1	A	373	<div style="display: flex; align-items: center;"> <div style="width: 20px; height: 10px; background-color: red; margin-right: 5px;"></div> <div style="width: 100%; height: 15px; background: linear-gradient(to right, red 2%, orange 2%, yellow 9%, green 84%, grey 84%);"></div> <div style="margin-left: 5px;">%</div> </div> <p style="text-align: center;">84% 9% • 5%</p>
1	B	373	<div style="display: flex; align-items: center;"> <div style="width: 20px; height: 10px; background-color: red; margin-right: 5px;"></div> <div style="width: 100%; height: 15px; background: linear-gradient(to right, red 2%, orange 2%, yellow 7%, green 87%, grey 87%);"></div> <div style="margin-left: 5px;">%</div> </div> <p style="text-align: center;">87% 7% •• 5%</p>
2	C	137	<div style="display: flex; align-items: center;"> <div style="width: 20px; height: 10px; background-color: red; margin-right: 5px;"></div> <div style="width: 100%; height: 15px; background: linear-gradient(to right, red 2%, orange 2%, yellow 12%, green 79%, grey 79%);"></div> <div style="margin-left: 5px;">%</div> </div> <p style="text-align: center;">79% 12% • 9%</p>
2	E	137	<div style="display: flex; align-items: center;"> <div style="width: 100%; height: 15px; background: linear-gradient(to right, green 74%, yellow 15%, grey 9%);"></div> </div> <p style="text-align: center;">74% 15% • 9%</p>
3	D	386	<div style="display: flex; align-items: center;"> <div style="width: 20px; height: 10px; background-color: red; margin-right: 5px;"></div> <div style="width: 100%; height: 15px; background: linear-gradient(to right, red 2%, orange 2%, yellow 10%, green 87%, grey 87%);"></div> <div style="margin-left: 5px;">2%</div> </div> <p style="text-align: center;">87% 10% ••</p>

Continued on next page...

Continued from previous page...

Mol	Chain	Length	Quality of chain
3	F	386	<p>A horizontal bar chart representing the quality of chain. The bar is primarily green, indicating a high quality score of 88%. A small yellow segment at the end indicates a lower quality score of 9%. The bar is labeled with a '%' symbol at the start and '88%' and '9%' at the corresponding positions. There are two small black dots at the far right end of the bar.</p>

The following table lists non-polymeric compounds, carbohydrate monomers and non-standard residues in protein, DNA, RNA chains that are outliers for geometric or electron-density-fit criteria:

Mol	Type	Chain	Res	Chirality	Geometry	Clashes	Electron density
2	0AF	C	57	X	-	-	-
2	0AF	E	57	X	-	-	-

2 Entry composition [i](#)

There are 9 unique types of molecules in this entry. The entry contains 14765 atoms, of which 0 are hydrogens and 0 are deuteriums.

In the tables below, the ZeroOcc column contains the number of atoms modelled with zero occupancy, the AltConf column contains the number of residues with at least one atom in alternate conformation and the Trace column contains the number of residues modelled with at most 2 atoms.

- Molecule 1 is a protein called Methylamine utilization protein mauG.

Mol	Chain	Residues	Atoms					ZeroOcc	AltConf	Trace
			Total	C	N	O	S			
1	A	354	2740	1711	491	527	11	0	1	0
1	B	355	2743	1712	491	529	11	0	0	0

There are 12 discrepancies between the modelled and reference sequences:

Chain	Residue	Modelled	Actual	Comment	Reference
A	368	HIS	-	expression tag	UNP Q51658
A	369	HIS	-	expression tag	UNP Q51658
A	370	HIS	-	expression tag	UNP Q51658
A	371	HIS	-	expression tag	UNP Q51658
A	372	HIS	-	expression tag	UNP Q51658
A	373	HIS	-	expression tag	UNP Q51658
B	368	HIS	-	expression tag	UNP Q51658
B	369	HIS	-	expression tag	UNP Q51658
B	370	HIS	-	expression tag	UNP Q51658
B	371	HIS	-	expression tag	UNP Q51658
B	372	HIS	-	expression tag	UNP Q51658
B	373	HIS	-	expression tag	UNP Q51658

- Molecule 2 is a protein called Methylamine dehydrogenase light chain.

Mol	Chain	Residues	Atoms					ZeroOcc	AltConf	Trace
			Total	C	N	O	S			
2	C	125	957	592	161	190	14	0	1	0
2	E	125	963	596	161	190	16	0	3	0

There are 12 discrepancies between the modelled and reference sequences:

Chain	Residue	Modelled	Actual	Comment	Reference
C	132	HIS	-	expression tag	UNP Q51658
C	133	HIS	-	expression tag	UNP Q51658
C	134	HIS	-	expression tag	UNP Q51658
C	135	HIS	-	expression tag	UNP Q51658
C	136	HIS	-	expression tag	UNP Q51658
C	137	HIS	-	expression tag	UNP Q51658
E	132	HIS	-	expression tag	UNP Q51658
E	133	HIS	-	expression tag	UNP Q51658
E	134	HIS	-	expression tag	UNP Q51658
E	135	HIS	-	expression tag	UNP Q51658
E	136	HIS	-	expression tag	UNP Q51658
E	137	HIS	-	expression tag	UNP Q51658

- Molecule 3 is a protein called Methylamine dehydrogenase heavy chain.

Mol	Chain	Residues	Atoms					ZeroOcc	AltConf	Trace
3	D	376	Total	C	N	O	S	0	1	0
			2925	1854	502	560	9			
3	F	376	Total	C	N	O	S	0	1	0
			2926	1855	502	560	9			

- Molecule 4 is CALCIUM ION (three-letter code: CA) (formula: Ca).

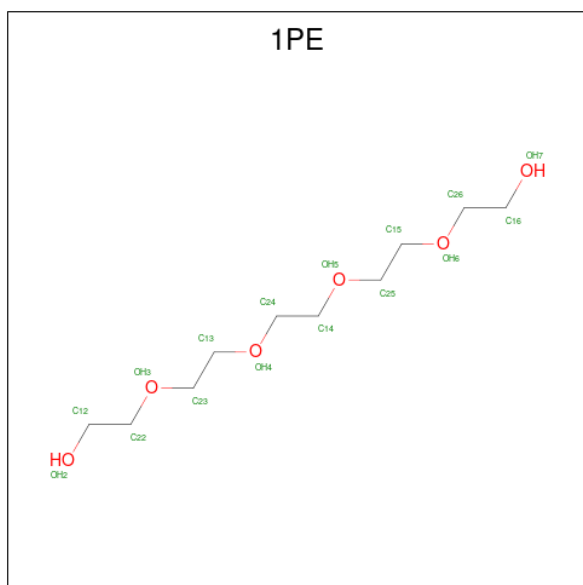
Mol	Chain	Residues	Atoms		ZeroOcc	AltConf
4	A	1	Total	Ca	0	0
			1	1		
4	B	1	Total	Ca	0	0
			1	1		

- Molecule 5 is HEME C (three-letter code: HEC) (formula: C₃₄H₃₄FeN₄O₄).



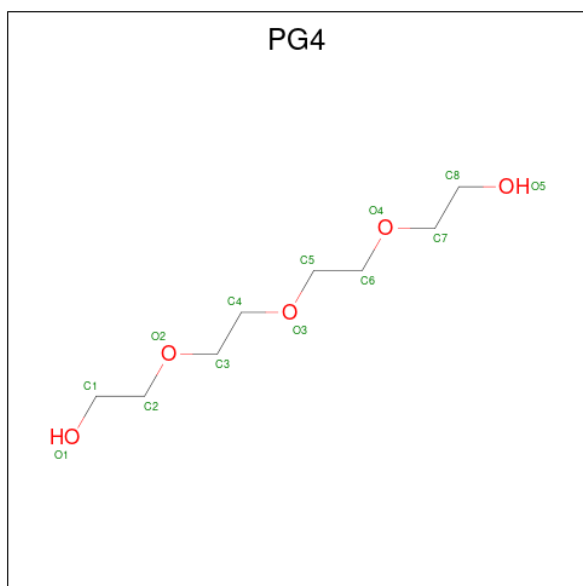
Mol	Chain	Residues	Atoms				ZeroOcc	AltConf	
5	A	1	Total	C	Fe	N	O	0	0
			43	34	1	4	4		
5	A	1	Total	C	Fe	N	O	0	0
			43	34	1	4	4		
5	B	1	Total	C	Fe	N	O	0	0
			43	34	1	4	4		
5	B	1	Total	C	Fe	N	O	0	0
			43	34	1	4	4		

- Molecule 6 is PENTAETHYLENE GLYCOL (three-letter code: 1PE) (formula: $C_{10}H_{22}O_6$).



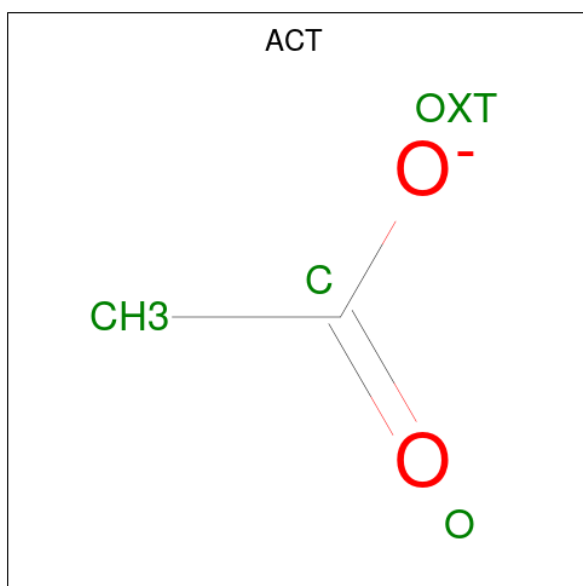
Mol	Chain	Residues	Atoms			ZeroOcc	AltConf
6	F	1	Total	C	O	0	0
			16	10	6		

- Molecule 7 is TETRAETHYLENE GLYCOL (three-letter code: PG4) (formula: $C_8H_{18}O_5$).



Mol	Chain	Residues	Atoms			ZeroOcc	AltConf
7	F	1	Total	C	O	0	0
			13	8	5		

- Molecule 8 is ACETATE ION (three-letter code: ACT) (formula: $C_2H_3O_2$).



Mol	Chain	Residues	Atoms			ZeroOcc	AltConf
8	F	1	Total	C	O	0	0
			4	2	2		

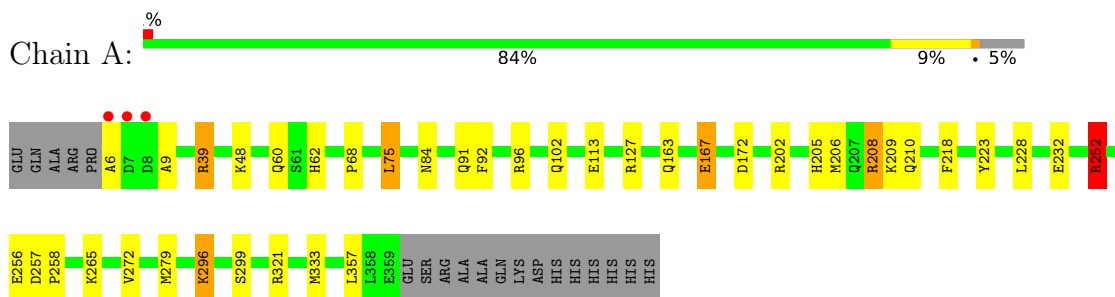
- Molecule 9 is water.

Mol	Chain	Residues	Atoms		ZeroOcc	AltConf
9	A	247	Total	O	0	0
			247	247		
9	B	268	Total	O	0	0
			268	268		
9	C	92	Total	O	0	0
			92	92		
9	D	263	Total	O	0	0
			263	263		
9	E	95	Total	O	0	0
			95	95		
9	F	339	Total	O	0	0
			339	339		

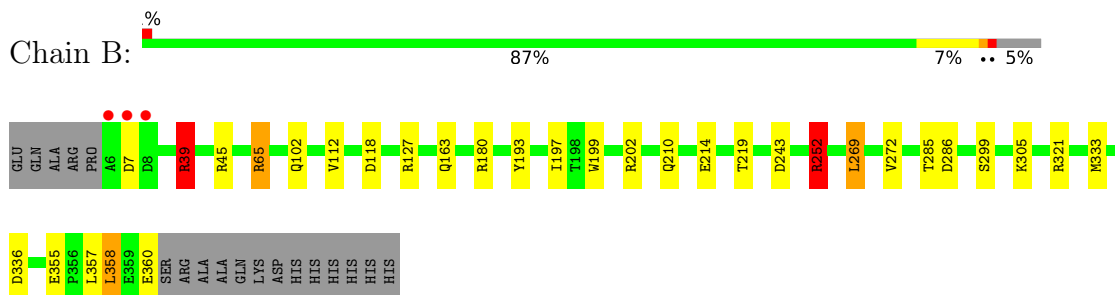
3 Residue-property plots [i](#)

These plots are drawn for all protein, RNA, DNA and oligosaccharide chains in the entry. The first graphic for a chain summarises the proportions of the various outlier classes displayed in the second graphic. The second graphic shows the sequence view annotated by issues in geometry and electron density. Residues are color-coded according to the number of geometric quality criteria for which they contain at least one outlier: green = 0, yellow = 1, orange = 2 and red = 3 or more. A red dot above a residue indicates a poor fit to the electron density ($RSRZ > 2$). Stretches of 2 or more consecutive residues without any outlier are shown as a green connector. Residues present in the sample, but not in the model, are shown in grey.

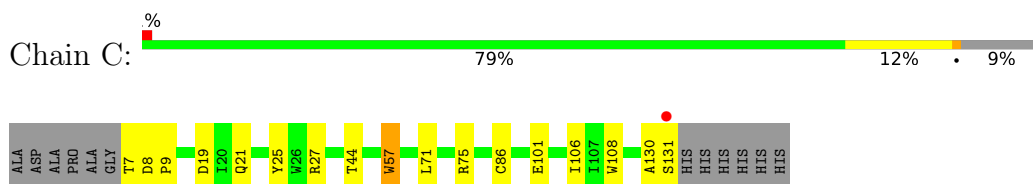
- Molecule 1: Methylamine utilization protein mauG



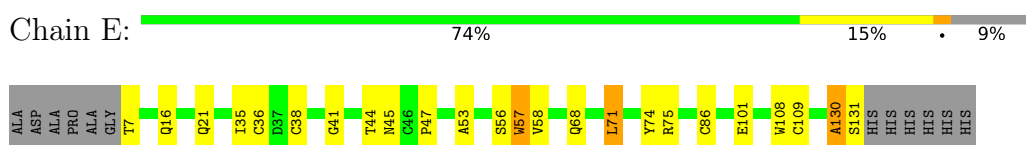
- Molecule 1: Methylamine utilization protein mauG



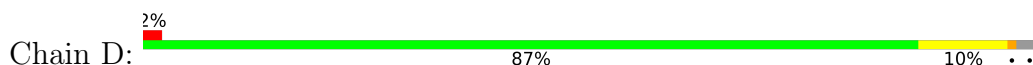
- Molecule 2: Methylamine dehydrogenase light chain

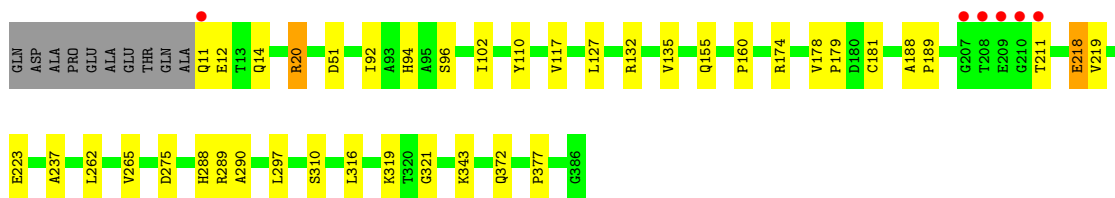


- Molecule 2: Methylamine dehydrogenase light chain

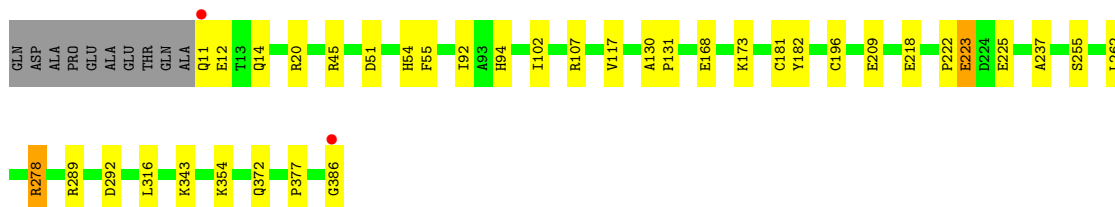
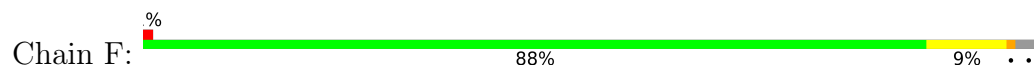


- Molecule 3: Methylamine dehydrogenase heavy chain





● Molecule 3: Methylamine dehydrogenase heavy chain



4 Data and refinement statistics

Property	Value	Source
Space group	P 1	Depositor
Cell constants a, b, c, α , β , γ	55.53Å 83.52Å 107.78Å 109.94° 91.54° 105.78°	Depositor
Resolution (Å)	44.49 – 2.02 44.48 – 2.02	Depositor EDS
% Data completeness (in resolution range)	92.7 (44.49-2.02) 92.6 (44.48-2.02)	Depositor EDS
R_{merge}	0.07	Depositor
R_{sym}	0.07	Depositor
$\langle I/\sigma(I) \rangle$ ¹	2.27 (at 2.01Å)	Xtrriage
Refinement program	REFMAC	Depositor
R, R_{free}	0.135 , 0.189 0.144 , 0.197	Depositor DCC
R_{free} test set	5298 reflections (5.03%)	wwPDB-VP
Wilson B-factor (Å ²)	18.5	Xtrriage
Anisotropy	0.048	Xtrriage
Bulk solvent k_{sol} (e/Å ³), B_{sol} (Å ²)	0.36 , 40.9	EDS
L-test for twinning ²	$\langle L \rangle = 0.49$, $\langle L^2 \rangle = 0.32$	Xtrriage
Estimated twinning fraction	No twinning to report.	Xtrriage
F_o, F_c correlation	0.96	EDS
Total number of atoms	14765	wwPDB-VP
Average B, all atoms (Å ²)	15.0	wwPDB-VP

Xtrriage's analysis on translational NCS is as follows: *The largest off-origin peak in the Patterson function is 4.75% of the height of the origin peak. No significant pseudotranslation is detected.*

¹Intensities estimated from amplitudes.

²Theoretical values of $\langle |L| \rangle$, $\langle L^2 \rangle$ for acentric reflections are 0.5, 0.333 respectively for untwinned datasets, and 0.375, 0.2 for perfectly twinned datasets.

5 Model quality [i](#)

5.1 Standard geometry [i](#)

Bond lengths and bond angles in the following residue types are not validated in this section: PG4, 0AF, ACT, HEC, 1PE, CA

The Z score for a bond length (or angle) is the number of standard deviations the observed value is removed from the expected value. A bond length (or angle) with $|Z| > 5$ is considered an outlier worth inspection. RMSZ is the root-mean-square of all Z scores of the bond lengths (or angles).

Mol	Chain	Bond lengths		Bond angles	
		RMSZ	# Z >5	RMSZ	# Z >5
1	A	1.05	0/2807	1.15	14/3809 (0.4%)
1	B	1.08	1/2807 (0.0%)	1.18	15/3809 (0.4%)
2	C	1.03	1/969 (0.1%)	0.91	2/1323 (0.2%)
2	E	1.11	0/981	0.95	0/1340
3	D	1.02	1/3006 (0.0%)	0.88	2/4096 (0.0%)
3	F	1.16	2/3006 (0.1%)	0.94	3/4096 (0.1%)
All	All	1.08	5/13576 (0.0%)	1.02	36/18473 (0.2%)

Chiral center outliers are detected by calculating the chiral volume of a chiral center and verifying if the center is modelled as a planar moiety or with the opposite hand. A planarity outlier is detected by checking planarity of atoms in a peptide group, atoms in a mainchain group or atoms of a sidechain that are expected to be planar.

Mol	Chain	#Chirality outliers	#Planarity outliers
1	A	0	1
1	B	0	1
2	C	1	0
2	E	1	1
All	All	2	3

All (5) bond length outliers are listed below:

Mol	Chain	Res	Type	Atoms	Z	Observed(Å)	Ideal(Å)
1	B	199	TRP	CB-CG	7.46	1.63	1.50
2	C	101	GLU	CG-CD	5.70	1.60	1.51
3	F	223	GLU	CG-CD	5.54	1.60	1.51
3	D	223	GLU	CG-CD	5.46	1.60	1.51
3	F	209	GLU	CG-CD	5.07	1.59	1.51

All (36) bond angle outliers are listed below:

Mol	Chain	Res	Type	Atoms	Z	Observed(°)	Ideal(°)
1	B	39	ARG	NE-CZ-NH2	-26.09	107.26	120.30
1	A	39	ARG	NE-CZ-NH2	-24.65	107.98	120.30
1	B	39	ARG	NE-CZ-NH1	22.86	131.73	120.30
1	A	39	ARG	NE-CZ-NH1	22.63	131.61	120.30
1	A	252	ARG	NE-CZ-NH2	-19.45	110.58	120.30
1	B	252	ARG	NE-CZ-NH2	-18.76	110.92	120.30
1	B	252	ARG	NE-CZ-NH1	17.34	128.97	120.30
1	A	252	ARG	NE-CZ-NH1	15.35	127.97	120.30
1	B	39	ARG	CD-NE-CZ	10.36	138.10	123.60
1	A	39	ARG	CD-NE-CZ	8.96	136.14	123.60
1	A	252	ARG	CD-NE-CZ	8.55	135.57	123.60
3	D	132	ARG	NE-CZ-NH2	-7.43	116.58	120.30
3	F	107	ARG	NE-CZ-NH2	-6.94	116.83	120.30
1	B	252	ARG	CD-NE-CZ	6.87	133.21	123.60
2	C	19	ASP	CB-CG-OD1	6.78	124.41	118.30
1	A	252	ARG	CG-CD-NE	-6.67	97.80	111.80
1	A	127	ARG	NE-CZ-NH2	-6.66	116.97	120.30
1	B	180	ARG	NE-CZ-NH2	-6.59	117.00	120.30
1	B	39	ARG	CG-CD-NE	-6.49	98.18	111.80
2	C	8	ASP	CB-CG-OD1	6.25	123.93	118.30
1	B	127	ARG	NE-CZ-NH2	-6.10	117.25	120.30
1	B	65	ARG	NE-CZ-NH1	-6.06	117.27	120.30
1	A	127	ARG	NE-CZ-NH1	6.01	123.31	120.30
1	B	269	LEU	CB-CG-CD1	5.95	121.11	111.00
1	A	75	LEU	CA-CB-CG	-5.83	101.89	115.30
1	A	208	ARG	NE-CZ-NH2	-5.83	117.39	120.30
1	B	118	ASP	CB-CG-OD1	5.72	123.45	118.30
1	A	321	ARG	CG-CD-NE	-5.56	100.12	111.80
1	B	45	ARG	NE-CZ-NH2	-5.53	117.54	120.30
1	B	336	ASP	CB-CG-OD2	5.38	123.15	118.30
3	F	292	ASP	CB-CG-OD1	5.37	123.14	118.30
1	B	243	ASP	CB-CG-OD1	5.26	123.03	118.30
3	F	278	ARG	NE-CZ-NH2	-5.24	117.68	120.30
1	A	39	ARG	CG-CD-NE	-5.09	101.11	111.80
1	A	172	ASP	CB-CG-OD1	5.03	122.83	118.30
3	D	132	ARG	NE-CZ-NH1	5.02	122.81	120.30

All (2) chirality outliers are listed below:

Mol	Chain	Res	Type	Atom
2	C	57	0AF	CA
2	E	57	0AF	CA

All (3) planarity outliers are listed below:

Mol	Chain	Res	Type	Group
1	A	252	ARG	Sidechain
1	B	39	ARG	Sidechain
2	E	130	ALA	Peptide

5.2 Too-close contacts [i](#)

In the following table, the Non-H and H(model) columns list the number of non-hydrogen atoms and hydrogen atoms in the chain respectively. The H(added) column lists the number of hydrogen atoms added and optimized by MolProbity. The Clashes column lists the number of clashes within the asymmetric unit, whereas Symm-Clashes lists symmetry-related clashes.

Mol	Chain	Non-H	H(model)	H(added)	Clashes	Symm-Clashes
1	A	2740	0	2616	28	0
1	B	2743	0	2614	13	0
2	C	957	0	863	13	0
2	E	963	0	873	22	0
3	D	2925	0	2809	24	0
3	F	2926	0	2813	18	0
4	A	1	0	0	0	0
4	B	1	0	0	0	0
5	A	86	0	60	4	0
5	B	86	0	60	3	0
6	F	16	0	22	0	0
7	F	13	0	18	1	0
8	F	4	0	3	0	0
9	A	247	0	0	2	0
9	B	268	0	0	3	0
9	C	92	0	0	1	0
9	D	263	0	0	1	0
9	E	95	0	0	2	0
9	F	339	0	0	4	0
All	All	14765	0	12751	107	0

The all-atom clashscore is defined as the number of clashes found per 1000 atoms (including hydrogen atoms). The all-atom clashscore for this structure is 4.

All (107) close contacts within the same asymmetric unit are listed below, sorted by their clash magnitude.

Atom-1	Atom-2	Interatomic distance (Å)	Clash overlap (Å)
2:E:35:ILE:HD12	2:E:86[B]:CYS:SG	1.97	1.05

Continued on next page...

Continued from previous page...

Atom-1	Atom-2	Interatomic distance (Å)	Clash overlap (Å)
1:B:285:THR:HG22	1:B:286:ASP:OD1	1.77	0.84
1:A:6:ALA:HA	1:A:9:ALA:HB3	1.59	0.82
2:C:57:0AF:CE3	2:C:108:TRP:CD1	2.63	0.82
3:F:255:SER:HA	7:F:388:PG4:H32	1.66	0.78
1:A:210:GLN:HE22	2:C:44:THR:HG21	1.50	0.76
1:A:206:MET:CE	1:A:218:PHE:CD2	2.69	0.76
3:D:14:GLN:HE21	2:E:21:GLN:HE22	1.34	0.76
3:D:237:ALA:HB2	3:D:289:ARG:HG3	1.68	0.76
1:A:206:MET:HA	1:A:206:MET:HE2	1.69	0.75
2:E:57:0AF:CE3	2:E:108:TRP:CD1	2.70	0.74
1:B:299:SER:HB2	1:B:333:MET:HG3	1.70	0.74
2:C:130:ALA:O	2:C:131:SER:HB2	1.88	0.72
2:C:57:0AF:HE3	2:C:108:TRP:CD1	2.26	0.70
3:D:218:GLU:HG2	3:D:219:VAL:O	1.96	0.66
1:A:206:MET:HE3	1:A:218:PHE:CD2	2.31	0.66
3:F:168:GLU:HG3	9:F:905:HOH:O	1.96	0.65
3:D:265:VAL:HG21	3:D:321:GLY:CA	2.26	0.65
1:A:206:MET:HE3	1:A:218:PHE:HD2	1.62	0.65
1:A:6:ALA:HA	1:A:9:ALA:CB	2.27	0.64
1:B:305:LYS:HE3	9:B:614:HOH:O	1.98	0.63
3:D:372:GLN:HE22	2:E:86[B]:CYS:H	1.47	0.62
3:D:372:GLN:HE22	2:E:86[A]:CYS:H	1.48	0.62
3:D:179:PRO:HD2	3:D:181[B]:CYS:SG	2.40	0.61
1:B:197:ILE:O	1:B:202:ARG:HD2	2.01	0.61
1:A:206:MET:HE1	1:A:218:PHE:CD2	2.36	0.60
3:D:265:VAL:CG2	3:D:321:GLY:HA3	2.31	0.59
2:E:38:CYS:SG	2:E:86[B]:CYS:HB2	2.43	0.59
1:A:48:LYS:H	1:A:62:HIS:HE1	1.51	0.58
1:A:96:ARG:HA	1:A:252:ARG:HG3	1.87	0.57
3:D:265:VAL:HG21	3:D:321:GLY:HA2	1.85	0.57
3:D:12:GLU:OE1	3:D:20:ARG:NH1	2.37	0.57
2:E:36[B]:CYS:SG	2:E:45:ASN:O	2.63	0.56
1:B:210:GLN:HE22	2:E:44:THR:HG21	1.69	0.56
2:C:21:GLN:HE22	3:F:14:GLN:HE21	1.52	0.54
3:D:178:VAL:HB	3:D:179:PRO:CD	2.37	0.54
3:F:237:ALA:HB2	3:F:289:ARG:HG3	1.88	0.54
3:D:265:VAL:HG21	3:D:321:GLY:HA3	1.86	0.54
2:C:57:0AF:CE3	2:C:108:TRP:HD1	2.15	0.54
1:A:163:GLN:HE22	5:A:500:HEC:HMA1	1.73	0.53
2:E:36[B]:CYS:SG	2:E:41:GLY:HA3	2.49	0.53
2:C:25:TYR:CE2	2:C:27:ARG:HG3	2.43	0.52

Continued on next page...

Continued from previous page...

Atom-1	Atom-2	Interatomic distance (Å)	Clash overlap (Å)
2:C:130:ALA:O	2:C:131:SER:CB	2.56	0.52
2:E:57:0AF:HE3	2:E:108:TRP:CD1	2.45	0.52
1:A:252:ARG:HD3	9:A:890:HOH:O	2.09	0.52
1:A:48:LYS:H	1:A:62:HIS:CE1	2.28	0.51
2:E:101:GLU:HA	9:E:857:HOH:O	2.10	0.51
3:F:196:CYS:HB3	9:F:635:HOH:O	2.11	0.51
3:F:222:PRO:HG2	3:F:225:GLU:HB2	1.93	0.50
2:E:130:ALA:O	2:E:131:SER:HB2	2.13	0.49
3:F:45:ARG:NH2	3:F:343:LYS:O	2.45	0.49
3:D:288:HIS:HE1	3:D:290:ALA:HB3	1.77	0.49
3:F:181[B]:CYS:HB3	3:F:196:CYS:SG	2.52	0.49
3:F:386:GLY:HA3	9:F:856:HOH:O	2.11	0.49
1:A:296:LYS:NZ	9:A:1257:HOH:O	2.37	0.49
3:F:12:GLU:OE2	3:F:20:ARG:NH1	2.46	0.48
3:F:51:ASP:HA	3:F:377:PRO:HA	1.96	0.48
3:D:96:SER:HB3	3:D:110:TYR:CZ	2.48	0.48
1:A:91:GLN:O	1:A:92:PHE:HB2	2.13	0.48
5:B:600:HEC:HBC3	5:B:600:HEC:HMC1	1.97	0.47
3:D:297:LEU:HD22	3:D:310:SER:HB2	1.97	0.47
2:E:71:LEU:HD13	2:E:130:ALA:HA	1.96	0.47
1:A:206:MET:HE1	1:A:218:PHE:CE2	2.50	0.47
1:A:299:SER:HB2	1:A:333:MET:HG3	1.96	0.47
3:D:188:ALA:HB1	3:D:189:PRO:CD	2.45	0.47
2:E:57:0AF:CE3	2:E:108:TRP:HD1	2.25	0.47
3:D:372:GLN:NE2	2:E:86[A]:CYS:H	2.11	0.46
3:D:372:GLN:NE2	2:E:86[B]:CYS:H	2.11	0.46
1:A:223:TYR:CE2	1:A:265:LYS:HB2	2.51	0.46
1:B:193:TYR:O	1:B:197:ILE:HG12	2.15	0.46
2:C:75:ARG:HA	9:C:849:HOH:O	2.16	0.46
1:A:228:LEU:HD13	1:A:279:MET:HB3	1.98	0.46
1:A:60:GLN:O	1:A:62:HIS:HD2	1.98	0.45
3:D:11:GLN:HG3	3:D:11:GLN:O	2.16	0.45
1:A:60:GLN:O	1:A:62:HIS:CD2	2.70	0.45
1:B:210:GLN:NE2	2:E:44:THR:HG21	2.30	0.45
1:A:272:VAL:HG21	5:A:600:HEC:HMA3	2.00	0.44
1:A:205:HIS:O	1:A:206:MET:HE2	2.17	0.44
3:D:20:ARG:HE	3:D:20:ARG:HB3	1.48	0.44
1:B:163:GLN:HE22	5:B:500:HEC:HMA1	1.82	0.44
2:E:21:GLN:O	2:E:86[B]:CYS:SG	2.76	0.44
2:C:7:THR:O	2:C:9:PRO:HD3	2.18	0.44
3:D:155:GLN:NE2	9:D:665:HOH:O	2.39	0.44

Continued on next page...

Continued from previous page...

Atom-1	Atom-2	Interatomic distance (Å)	Clash overlap (Å)
2:C:86:CYS:H	3:F:372:GLN:HE22	1.64	0.44
1:B:65:ARG:HH11	1:B:65:ARG:HD2	1.66	0.43
3:F:54:HIS:O	3:F:55:PHE:HB2	2.19	0.43
3:F:278:ARG:HD3	9:F:631:HOH:O	2.19	0.43
3:D:51:ASP:HA	3:D:377:PRO:HA	2.01	0.42
1:B:355:GLU:O	1:B:358:LEU:HB2	2.20	0.42
2:E:36[B]:CYS:SG	2:E:47:PRO:HD3	2.60	0.42
3:F:130:ALA:N	3:F:131:PRO:HD3	2.35	0.42
1:B:272:VAL:HG21	5:B:600:HEC:HMA3	2.00	0.42
2:C:106:ILE:HA	3:D:135:VAL:HG23	2.01	0.41
1:A:167:GLU:O	1:A:167:GLU:HG3	2.16	0.41
2:E:53:ALA:HB2	2:E:109:CYS:HA	2.03	0.41
1:A:113:GLU:HG2	5:A:500:HEC:HBC2	2.03	0.41
1:A:257:ASP:HA	1:A:258:PRO:HD2	1.86	0.41
2:E:56:SER:CB	2:E:74:TYR:O	2.69	0.41
1:B:252:ARG:HD3	9:B:885:HOH:O	2.21	0.40
2:E:75:ARG:HA	9:E:625:HOH:O	2.21	0.40
3:F:182:TYR:CD1	3:F:182:TYR:N	2.89	0.40
1:A:68:PRO:HG2	5:A:500:HEC:HBA1	2.02	0.40
2:C:86:CYS:H	3:F:372:GLN:NE2	2.19	0.40
1:B:214:GLU:HB2	9:B:632:HOH:O	2.22	0.40
3:D:288:HIS:CE1	3:D:290:ALA:HB3	2.57	0.40

There are no symmetry-related clashes.

5.3 Torsion angles [i](#)

5.3.1 Protein backbone [i](#)

In the following table, the Percentiles column shows the percent Ramachandran outliers of the chain as a percentile score with respect to all X-ray entries followed by that with respect to entries of similar resolution.

The Analysed column shows the number of residues for which the backbone conformation was analysed, and the total number of residues.

Mol	Chain	Analysed	Favoured	Allowed	Outliers	Percentiles	
1	A	353/373 (95%)	344 (98%)	9 (2%)	0	100	100
1	B	353/373 (95%)	346 (98%)	7 (2%)	0	100	100
2	C	123/137 (90%)	119 (97%)	4 (3%)	0	100	100

Continued on next page...

Continued from previous page...

Mol	Chain	Analysed	Favoured	Allowed	Outliers	Percentiles	
2	E	125/137 (91%)	121 (97%)	4 (3%)	0	100	100
3	D	375/386 (97%)	365 (97%)	9 (2%)	1 (0%)	41	36
3	F	375/386 (97%)	363 (97%)	11 (3%)	1 (0%)	41	36
All	All	1704/1792 (95%)	1658 (97%)	44 (3%)	2 (0%)	51	48

All (2) Ramachandran outliers are listed below:

Mol	Chain	Res	Type
3	D	102	ILE
3	F	102	ILE

5.3.2 Protein sidechains [i](#)

In the following table, the Percentiles column shows the percent sidechain outliers of the chain as a percentile score with respect to all X-ray entries followed by that with respect to entries of similar resolution.

The Analysed column shows the number of residues for which the sidechain conformation was analysed, and the total number of residues.

Mol	Chain	Analysed	Rotameric	Outliers	Percentiles	
1	A	277/292 (95%)	266 (96%)	11 (4%)	31	28
1	B	277/292 (95%)	266 (96%)	11 (4%)	31	28
2	C	105/112 (94%)	104 (99%)	1 (1%)	76	80
2	E	107/112 (96%)	102 (95%)	5 (5%)	26	22
3	D	305/311 (98%)	291 (95%)	14 (5%)	27	22
3	F	305/311 (98%)	295 (97%)	10 (3%)	38	36
All	All	1376/1430 (96%)	1324 (96%)	52 (4%)	33	30

All (52) residues with a non-rotameric sidechain are listed below:

Mol	Chain	Res	Type
1	A	39	ARG
1	A	75	LEU
1	A	84	ASN
1	A	167	GLU
1	A	202	ARG
1	A	208	ARG

Continued on next page...

Continued from previous page...

Mol	Chain	Res	Type
1	A	209	LYS
1	A	232	GLU
1	A	256	GLU
1	A	296	LYS
1	A	357	LEU
1	B	7	ASP
1	B	39	ARG
1	B	102	GLN
1	B	112	VAL
1	B	219	THR
1	B	252	ARG
1	B	269	LEU
1	B	321	ARG
1	B	357	LEU
1	B	358	LEU
1	B	360	GLU
2	C	71	LEU
3	D	20	ARG
3	D	92	ILE
3	D	94	HIS
3	D	117	VAL
3	D	127	LEU
3	D	160	PRO
3	D	174	ARG
3	D	211	THR
3	D	218	GLU
3	D	262	LEU
3	D	275	ASP
3	D	316	LEU
3	D	319	LYS
3	D	343	LYS
2	E	7	THR
2	E	16	GLN
2	E	58	VAL
2	E	68	GLN
2	E	71	LEU
3	F	11	GLN
3	F	92	ILE
3	F	94	HIS
3	F	117	VAL
3	F	173	LYS
3	F	218	GLU

Continued on next page...

Continued from previous page...

Mol	Chain	Res	Type
3	F	223	GLU
3	F	262	LEU
3	F	316	LEU
3	F	354	LYS

Sometimes sidechains can be flipped to improve hydrogen bonding and reduce clashes. All (18) such sidechains are listed below:

Mol	Chain	Res	Type
1	A	26	ASN
1	A	29	GLN
1	A	62	HIS
1	A	91	GLN
1	A	163	GLN
1	A	210	GLN
1	B	16	GLN
1	B	60	GLN
1	B	163	GLN
1	B	210	GLN
3	D	14	GLN
3	D	372	GLN
3	F	14	GLN
3	F	30	GLN
3	F	54	HIS
3	F	60	GLN
3	F	300	GLN
3	F	372	GLN

5.3.3 RNA [i](#)

There are no RNA molecules in this entry.

5.4 Non-standard residues in protein, DNA, RNA chains [i](#)

2 non-standard protein/DNA/RNA residues are modelled in this entry.

In the following table, the Counts columns list the number of bonds (or angles) for which Mogul statistics could be retrieved, the number of bonds (or angles) that are observed in the model and the number of bonds (or angles) that are defined in the Chemical Component Dictionary. The Link column lists molecule types, if any, to which the group is linked. The Z score for a bond length (or angle) is the number of standard deviations the observed value is removed from the

expected value. A bond length (or angle) with $|Z| > 2$ is considered an outlier worth inspection. RMSZ is the root-mean-square of all Z scores of the bond lengths (or angles).

Mol	Type	Chain	Res	Link	Bond lengths			Bond angles		
					Counts	RMSZ	# Z > 2	Counts	RMSZ	# Z > 2
2	0AF	E	57	2	13,16,17	1.72	4 (30%)	11,22,24	3.63	4 (36%)
2	0AF	C	57	2	13,16,17	1.43	2 (15%)	11,22,24	3.80	5 (45%)

In the following table, the Chirals column lists the number of chiral outliers, the number of chiral centers analysed, the number of these observed in the model and the number defined in the Chemical Component Dictionary. Similar counts are reported in the Torsion and Rings columns. '-' means no outliers of that kind were identified.

Mol	Type	Chain	Res	Link	Chirals	Torsions	Rings
2	0AF	E	57	2	1/1/1/2	1/4/6/8	0/2/2/2
2	0AF	C	57	2	1/1/1/2	1/4/6/8	0/2/2/2

All (6) bond length outliers are listed below:

Mol	Chain	Res	Type	Atoms	Z	Observed(Å)	Ideal(Å)
2	E	57	0AF	CB-CA	-3.33	1.46	1.53
2	E	57	0AF	CZ3-CE3	3.02	1.43	1.36
2	E	57	0AF	CH2-CZ2	2.66	1.42	1.37
2	E	57	0AF	CA-N	-2.49	1.40	1.48
2	C	57	0AF	CB-CA	-2.32	1.48	1.53
2	C	57	0AF	CZ3-CE3	2.27	1.41	1.36

All (9) bond angle outliers are listed below:

Mol	Chain	Res	Type	Atoms	Z	Observed(°)	Ideal(°)
2	C	57	0AF	CG-CB-CA	-10.22	98.72	114.53
2	E	57	0AF	CG-CB-CA	-9.63	99.65	114.53
2	E	57	0AF	CB-CA-C	5.77	122.28	111.47
2	C	57	0AF	CB-CA-C	4.34	119.60	111.47
2	C	57	0AF	CB-CG-CD2	3.60	131.86	126.25
2	C	57	0AF	CB-CG-CD1	-3.28	123.92	127.97
2	C	57	0AF	CZ3-CH2-CZ2	-2.28	117.39	120.28
2	E	57	0AF	CB-CG-CD2	2.08	129.49	126.25
2	E	57	0AF	CH2-CZ2-CE2	2.02	122.53	120.12

All (2) chirality outliers are listed below:

Mol	Chain	Res	Type	Atom
2	C	57	0AF	CA
2	E	57	0AF	CA

All (2) torsion outliers are listed below:

Mol	Chain	Res	Type	Atoms
2	C	57	0AF	N-CA-CB-CG
2	E	57	0AF	N-CA-CB-CG

There are no ring outliers.

2 monomers are involved in 6 short contacts:

Mol	Chain	Res	Type	Clashes	Symm-Clashes
2	E	57	0AF	3	0
2	C	57	0AF	3	0

5.5 Carbohydrates [i](#)

There are no monosaccharides in this entry.

5.6 Ligand geometry [i](#)

Of 9 ligands modelled in this entry, 2 are monoatomic - leaving 7 for Mogul analysis.

In the following table, the Counts columns list the number of bonds (or angles) for which Mogul statistics could be retrieved, the number of bonds (or angles) that are observed in the model and the number of bonds (or angles) that are defined in the Chemical Component Dictionary. The Link column lists molecule types, if any, to which the group is linked. The Z score for a bond length (or angle) is the number of standard deviations the observed value is removed from the expected value. A bond length (or angle) with $|Z| > 2$ is considered an outlier worth inspection. RMSZ is the root-mean-square of all Z scores of the bond lengths (or angles).

Mol	Type	Chain	Res	Link	Bond lengths			Bond angles		
					Counts	RMSZ	# Z > 2	Counts	RMSZ	# Z > 2
5	HEC	A	500	1	32,50,50	1.72	9 (28%)	24,82,82	2.42	14 (58%)
5	HEC	A	600	1	32,50,50	1.45	4 (12%)	24,82,82	2.80	13 (54%)
7	PG4	F	388	-	12,12,12	0.59	0	11,11,11	0.45	0
6	1PE	F	387	-	15,15,15	0.64	0	14,14,14	0.61	0
5	HEC	B	600	1	32,50,50	1.51	5 (15%)	24,82,82	3.05	10 (41%)
8	ACT	F	389	-	3,3,3	1.00	0	3,3,3	1.57	1 (33%)
5	HEC	B	500	1	32,50,50	1.40	7 (21%)	24,82,82	2.24	11 (45%)

In the following table, the Chirals column lists the number of chiral outliers, the number of chiral centers analysed, the number of these observed in the model and the number defined in the Chemical Component Dictionary. Similar counts are reported in the Torsion and Rings columns. '-' means no outliers of that kind were identified.

Mol	Type	Chain	Res	Link	Chirals	Torsions	Rings
5	HEC	A	500	1	-	0/10/54/54	-
5	HEC	A	600	1	-	2/10/54/54	-
7	PG4	F	388	-	-	8/10/10/10	-
6	1PE	F	387	-	-	5/13/13/13	-
5	HEC	B	600	1	-	2/10/54/54	-
5	HEC	B	500	1	-	3/10/54/54	-

All (25) bond length outliers are listed below:

Mol	Chain	Res	Type	Atoms	Z	Observed(Å)	Ideal(Å)
5	A	600	HEC	C4B-C3B	3.49	1.49	1.43
5	A	500	HEC	C1D-CHD	3.21	1.49	1.41
5	A	500	HEC	C3C-C4C	3.20	1.48	1.43
5	A	500	HEC	CBA-CGA	3.16	1.57	1.50
5	A	500	HEC	C4B-C3B	3.15	1.48	1.43
5	B	600	HEC	C3A-C4A	3.10	1.49	1.42
5	B	600	HEC	C2A-C1A	3.05	1.49	1.42
5	A	500	HEC	C2A-C1A	2.99	1.49	1.42
5	B	500	HEC	C1B-CHB	2.98	1.49	1.41
5	A	500	HEC	C1B-CHB	2.67	1.48	1.41
5	A	500	HEC	C1C-CHC	2.63	1.48	1.41
5	A	600	HEC	C1C-CHC	2.58	1.48	1.41
5	B	500	HEC	C1D-CHD	2.51	1.48	1.41
5	B	600	HEC	C3C-C2C	-2.43	1.38	1.40
5	B	500	HEC	C3C-C4C	2.40	1.47	1.43
5	B	600	HEC	C1B-CHB	2.39	1.47	1.41
5	A	500	HEC	C3A-C4A	2.37	1.47	1.42
5	B	500	HEC	C1C-CHC	2.36	1.47	1.41
5	B	500	HEC	C2A-C1A	2.31	1.47	1.42
5	B	600	HEC	C1B-NB	-2.29	1.31	1.36
5	A	600	HEC	O2A-CGA	-2.26	1.23	1.30
5	A	600	HEC	C1D-CHD	2.24	1.47	1.41
5	B	500	HEC	C3A-C4A	2.24	1.47	1.42
5	A	500	HEC	C3C-C2C	-2.19	1.38	1.40
5	B	500	HEC	C4B-C3B	2.04	1.46	1.43

All (49) bond angle outliers are listed below:

Mol	Chain	Res	Type	Atoms	Z	Observed(°)	Ideal(°)
5	B	600	HEC	CBD-CAD-C3D	-7.28	100.20	112.62
5	A	600	HEC	CBD-CAD-C3D	-6.83	100.97	112.62
5	B	600	HEC	C1D-C2D-C3D	-5.89	102.90	107.00
5	A	500	HEC	CBD-CAD-C3D	-5.46	103.30	112.62
5	B	500	HEC	CMB-C2B-C3B	5.44	132.21	125.82
5	B	600	HEC	CMA-C3A-C2A	4.72	133.85	124.94
5	A	600	HEC	CMC-C2C-C3C	4.69	131.33	125.82
5	B	600	HEC	CBA-CAA-C2A	-4.66	104.75	112.60
5	B	600	HEC	CMB-C2B-C3B	4.56	131.18	125.82
5	A	500	HEC	CMC-C2C-C3C	4.35	130.93	125.82
5	A	600	HEC	CMB-C2B-C3B	4.32	130.90	125.82
5	A	600	HEC	C1D-C2D-C3D	-4.26	104.03	107.00
5	B	500	HEC	CMC-C2C-C3C	4.18	130.74	125.82
5	A	600	HEC	CBA-CAA-C2A	-3.88	106.06	112.60
5	A	500	HEC	C2B-C3B-C4B	-3.76	102.29	106.35
5	B	600	HEC	C2B-C3B-C4B	-3.47	102.61	106.35
5	B	600	HEC	C4C-C3C-C2C	-3.29	102.81	106.35
5	B	500	HEC	CBD-CAD-C3D	-3.09	107.34	112.62
5	B	500	HEC	C1D-C2D-C3D	-3.08	104.85	107.00
5	A	500	HEC	C4C-C3C-C2C	-3.06	103.05	106.35
5	A	600	HEC	C2B-C3B-C4B	-3.01	103.10	106.35
5	B	500	HEC	CMB-C2B-C1B	-2.89	124.02	128.46
5	A	500	HEC	O2D-CGD-CBD	2.87	123.24	114.03
5	B	600	HEC	CMC-C2C-C3C	2.86	129.19	125.82
5	B	600	HEC	CMB-C2B-C1B	-2.81	124.14	128.46
5	A	600	HEC	CMD-C2D-C3D	2.79	130.20	124.94
5	A	600	HEC	CMC-C2C-C1C	-2.76	124.22	128.46
5	B	500	HEC	C4C-C3C-C2C	-2.42	103.73	106.35
5	B	600	HEC	C3C-C4C-NC	2.42	115.51	110.94
5	A	500	HEC	CBA-CAA-C2A	-2.41	108.54	112.60
5	A	500	HEC	O2A-CGA-O1A	-2.39	117.33	123.30
5	A	500	HEC	C3C-C4C-NC	2.36	115.40	110.94
5	A	500	HEC	O2A-CGA-CBA	2.36	121.60	114.03
5	A	500	HEC	CMA-C3A-C2A	2.35	129.37	124.94
5	A	600	HEC	C3B-C4B-NB	2.32	115.33	110.94
5	A	600	HEC	CMA-C3A-C2A	2.31	129.31	124.94
5	A	500	HEC	CMC-C2C-C1C	-2.25	125.01	128.46
5	A	600	HEC	C4C-C3C-C2C	-2.24	103.93	106.35
5	B	500	HEC	O2A-CGA-CBA	2.24	121.23	114.03
5	B	500	HEC	C3C-C4C-NC	2.18	115.07	110.94
5	A	500	HEC	C1D-C2D-C3D	-2.17	105.48	107.00
5	B	500	HEC	C2B-C3B-C4B	-2.17	104.01	106.35
5	B	500	HEC	O2D-CGD-CBD	2.15	120.92	114.03

Continued on next page...

Continued from previous page...

Mol	Chain	Res	Type	Atoms	Z	Observed(°)	Ideal(°)
5	A	500	HEC	C3B-C4B-NB	2.12	114.95	110.94
8	F	389	ACT	OXT-C-O	-2.08	114.38	122.05
5	B	500	HEC	CMC-C2C-C1C	-2.05	125.31	128.46
5	A	600	HEC	O2D-CGD-CBD	2.02	120.53	114.03
5	A	600	HEC	O2A-CGA-CBA	2.01	120.50	114.03
5	A	500	HEC	O1D-CGD-CBD	-2.01	116.62	123.08

There are no chirality outliers.

All (20) torsion outliers are listed below:

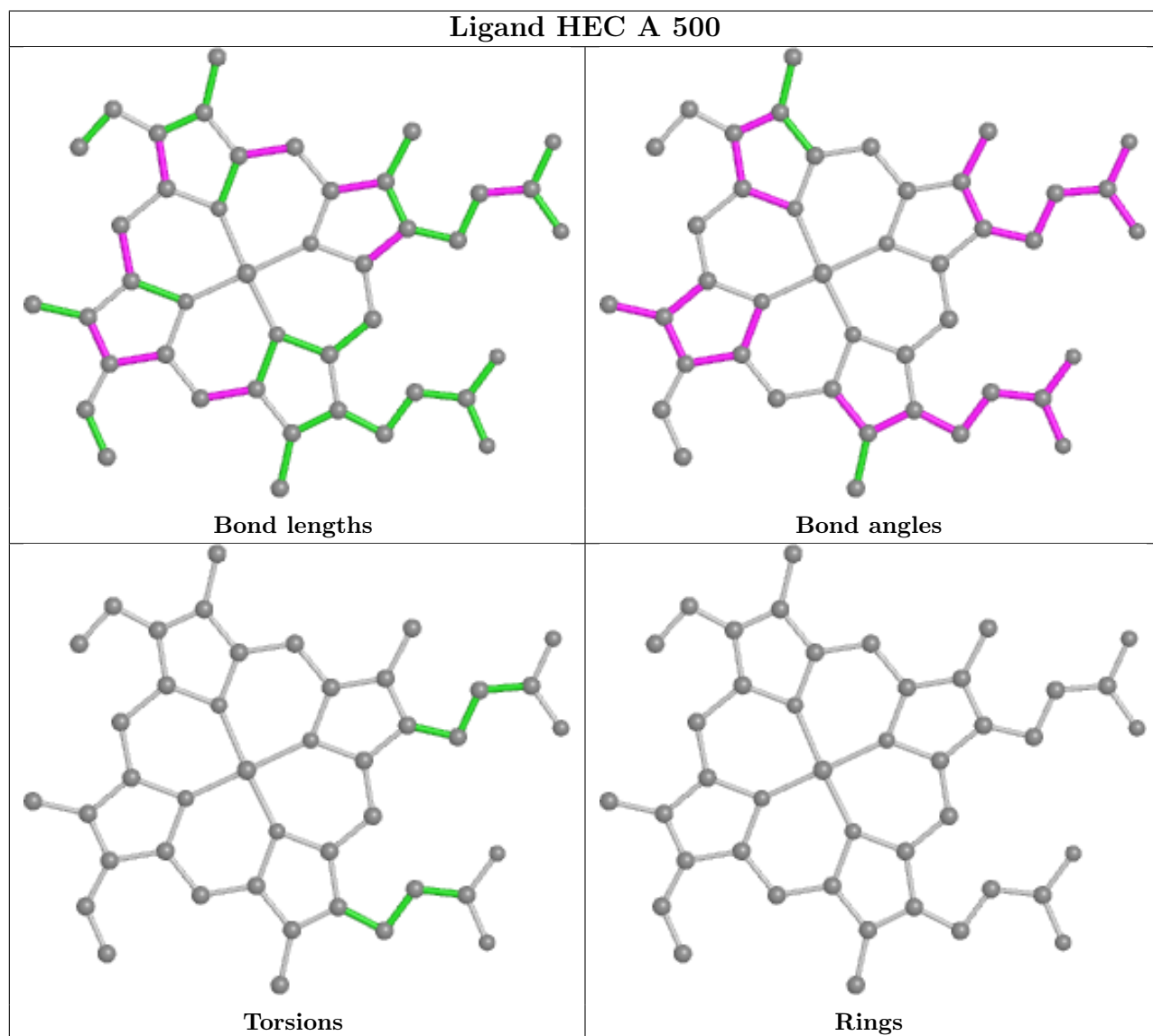
Mol	Chain	Res	Type	Atoms
7	F	388	PG4	O2-C3-C4-O3
7	F	388	PG4	O3-C5-C6-O4
7	F	388	PG4	O1-C1-C2-O2
6	F	387	1PE	OH4-C13-C23-OH3
6	F	387	1PE	OH7-C16-C26-OH6
7	F	388	PG4	O4-C7-C8-O5
6	F	387	1PE	OH2-C12-C22-OH3
7	F	388	PG4	C5-C6-O4-C7
7	F	388	PG4	C8-C7-O4-C6
6	F	387	1PE	C24-C14-OH5-C25
7	F	388	PG4	C3-C4-O3-C5
7	F	388	PG4	C1-C2-O2-C3
6	F	387	1PE	C12-C22-OH3-C23
5	B	500	HEC	CAA-CBA-CGA-O2A
5	A	600	HEC	CAD-CBD-CGD-O2D
5	B	500	HEC	CAD-CBD-CGD-O2D
5	B	600	HEC	CAD-CBD-CGD-O2D
5	A	600	HEC	CAD-CBD-CGD-O1D
5	B	500	HEC	CAA-CBA-CGA-O1A
5	B	600	HEC	CAD-CBD-CGD-O1D

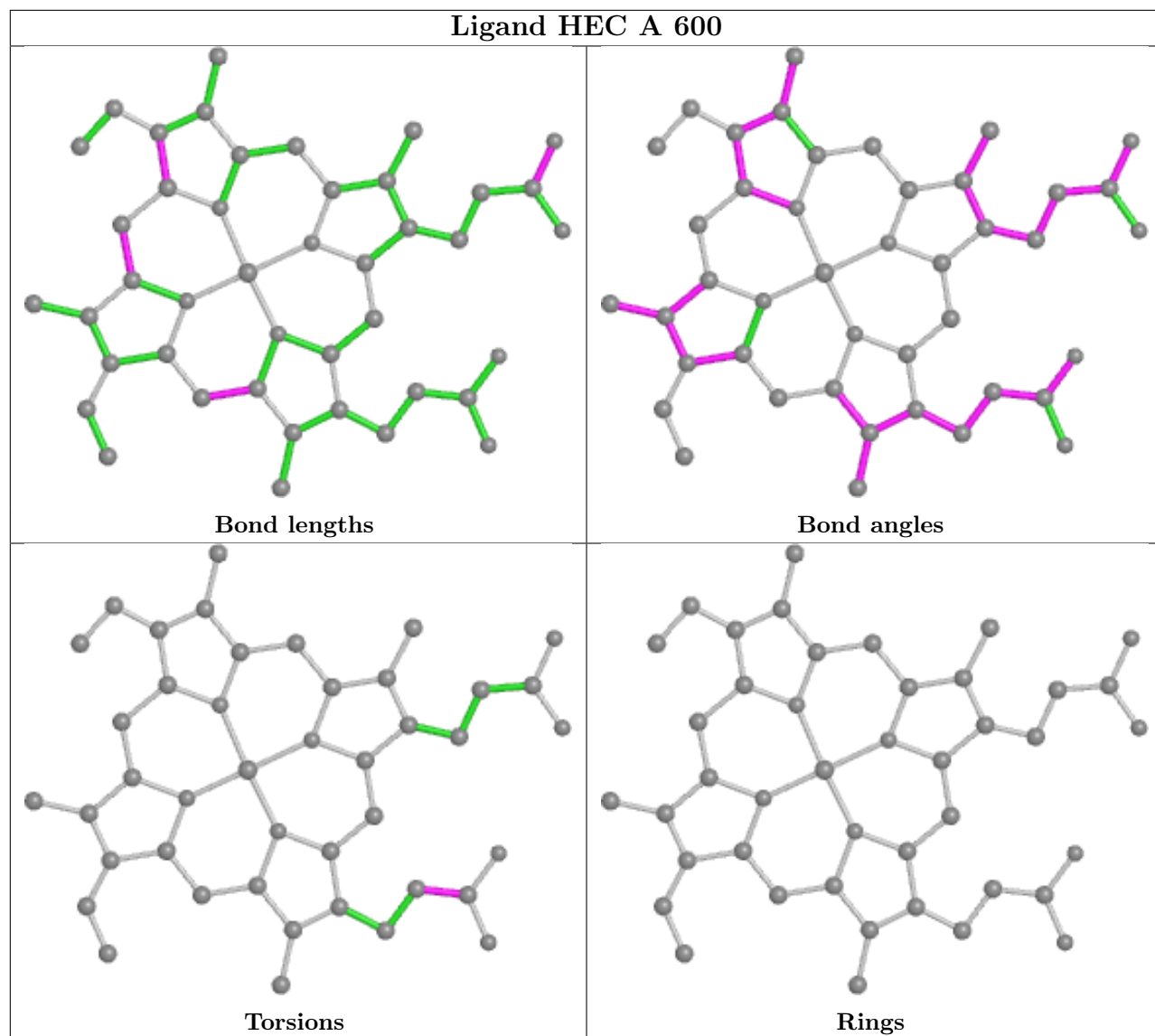
There are no ring outliers.

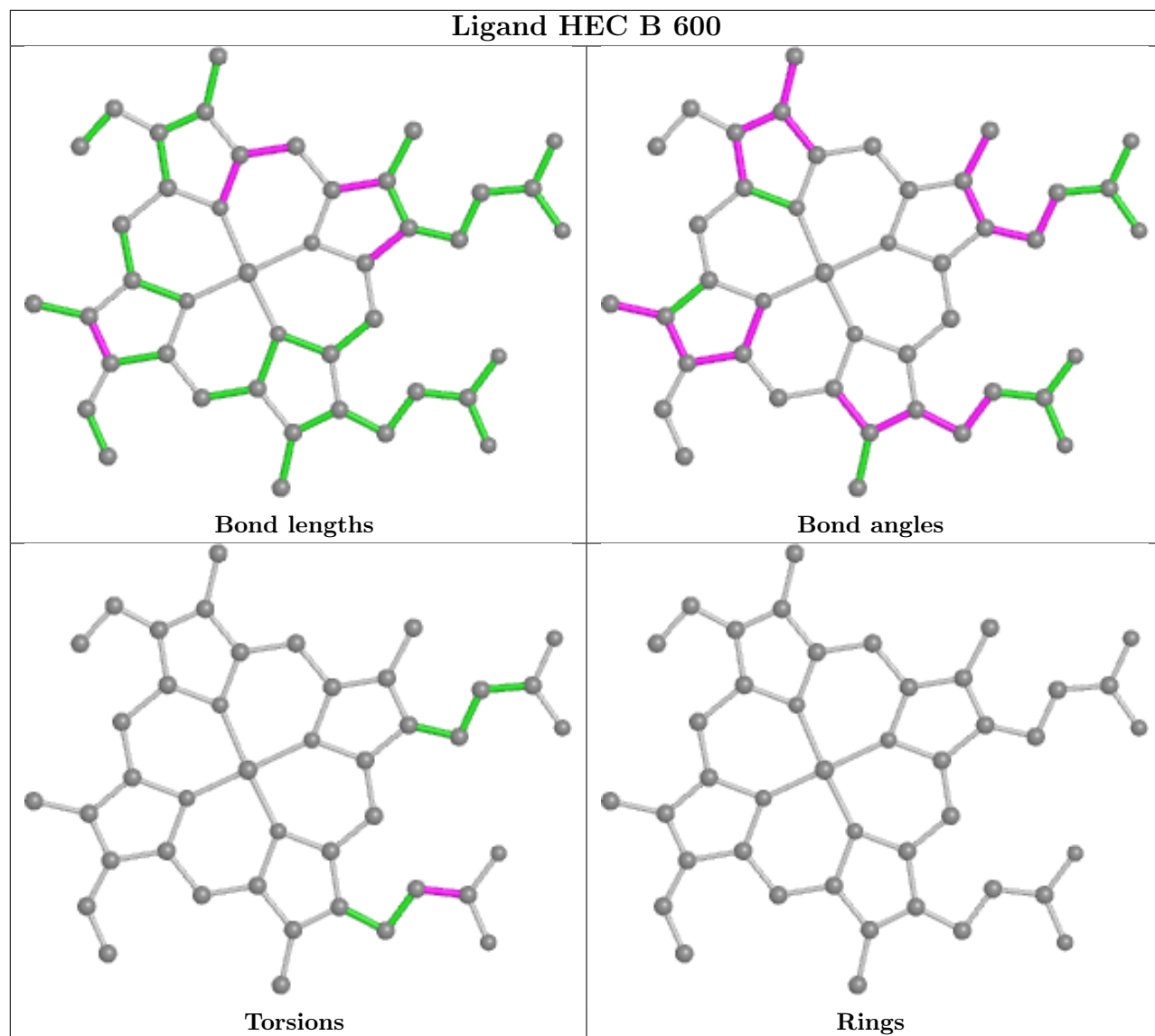
5 monomers are involved in 8 short contacts:

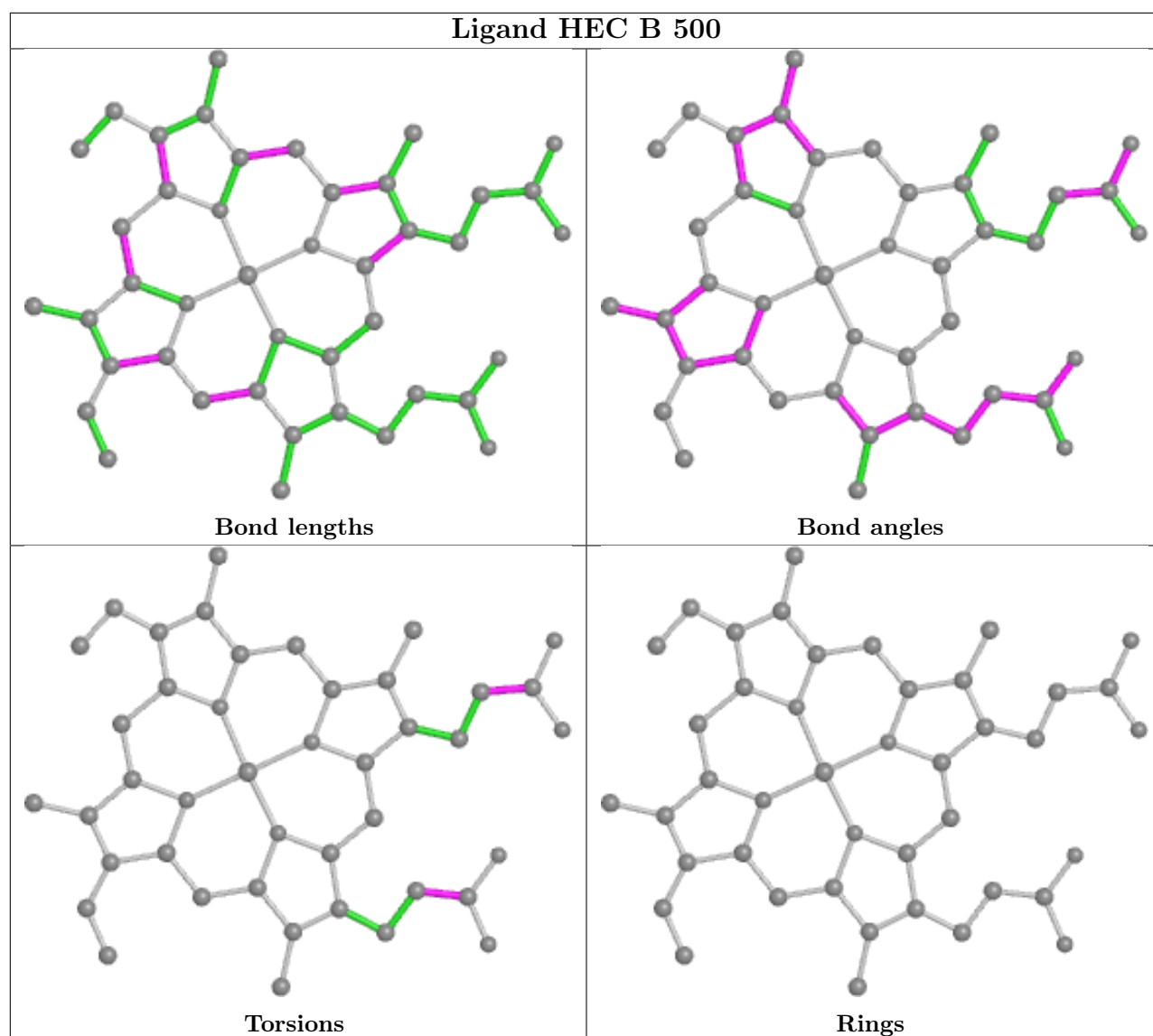
Mol	Chain	Res	Type	Clashes	Symm-Clashes
5	A	500	HEC	3	0
5	A	600	HEC	1	0
7	F	388	PG4	1	0
5	B	600	HEC	2	0
5	B	500	HEC	1	0

The following is a two-dimensional graphical depiction of Mogul quality analysis of bond lengths, bond angles, torsion angles, and ring geometry for all instances of the Ligand of Interest. In addition, ligands with molecular weight > 250 and outliers as shown on the validation Tables will also be included. For torsion angles, if less than 5% of the Mogul distribution of torsion angles is within 10 degrees of the torsion angle in question, then that torsion angle is considered an outlier. Any bond that is central to one or more torsion angles identified as an outlier by Mogul will be highlighted in the graph. For rings, the root-mean-square deviation (RMSD) between the ring in question and similar rings identified by Mogul is calculated over all ring torsion angles. If the average RMSD is greater than 60 degrees and the minimal RMSD between the ring in question and any Mogul-identified rings is also greater than 60 degrees, then that ring is considered an outlier. The outliers are highlighted in purple. The color gray indicates Mogul did not find sufficient equivalents in the CSD to analyse the geometry.









5.7 Other polymers [\(i\)](#)

There are no such residues in this entry.

5.8 Polymer linkage issues [\(i\)](#)

There are no chain breaks in this entry.

6 Fit of model and data

6.1 Protein, DNA and RNA chains

In the following table, the column labelled ‘#RSRZ> 2’ contains the number (and percentage) of RSRZ outliers, followed by percent RSRZ outliers for the chain as percentile scores relative to all X-ray entries and entries of similar resolution. The OWAB column contains the minimum, median, 95th percentile and maximum values of the occupancy-weighted average B-factor per residue. The column labelled ‘Q< 0.9’ lists the number of (and percentage) of residues with an average occupancy less than 0.9.

Mol	Chain	Analysed	<RSRZ>	#RSRZ>2	OWAB(Å ²)	Q<0.9
1	A	354/373 (94%)	-0.71	3 (0%) 86 85	8, 13, 26, 49	0
1	B	355/373 (95%)	-0.70	3 (0%) 86 85	8, 14, 27, 50	0
2	C	124/137 (90%)	-0.44	1 (0%) 86 85	10, 14, 24, 52	0
2	E	124/137 (90%)	-0.44	0 100 100	6, 11, 23, 53	0
3	D	376/386 (97%)	-0.56	6 (1%) 72 71	6, 13, 24, 53	0
3	F	376/386 (97%)	-0.65	2 (0%) 91 91	6, 11, 23, 48	0
All	All	1709/1792 (95%)	-0.62	15 (0%) 84 83	6, 13, 25, 53	0

All (15) RSRZ outliers are listed below:

Mol	Chain	Res	Type	RSRZ
1	B	7	ASP	5.3
1	A	7	ASP	4.9
3	D	208	THR	4.6
1	A	6	ALA	4.4
1	B	6	ALA	4.1
3	D	209	GLU	4.0
3	D	11	GLN	3.4
3	F	11	GLN	3.2
3	F	386	GLY	3.2
3	D	207	GLY	3.2
3	D	211	THR	2.9
1	A	8	ASP	2.6
2	C	131	SER	2.3
3	D	210	GLY	2.3
1	B	8	ASP	2.0

6.2 Non-standard residues in protein, DNA, RNA chains [i](#)

In the following table, the Atoms column lists the number of modelled atoms in the group and the number defined in the chemical component dictionary. The B-factors column lists the minimum, median, 95th percentile and maximum values of B factors of atoms in the group. The column labelled 'Q< 0.9' lists the number of atoms with occupancy less than 0.9.

Mol	Type	Chain	Res	Atoms	RSCC	RSR	B-factors(Å ²)	Q<0.9
2	0AF	E	57	15/16	0.96	0.14	10,14,22,22	0
2	0AF	C	57	15/16	0.97	0.11	17,19,26,26	0

6.3 Carbohydrates [i](#)

There are no monosaccharides in this entry.

6.4 Ligands [i](#)

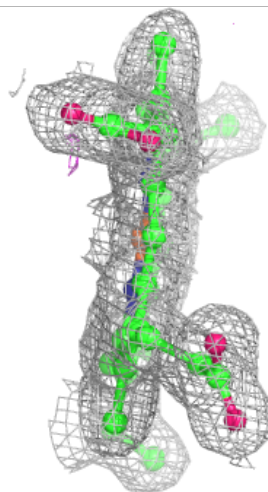
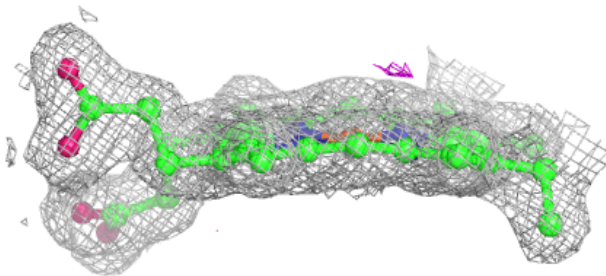
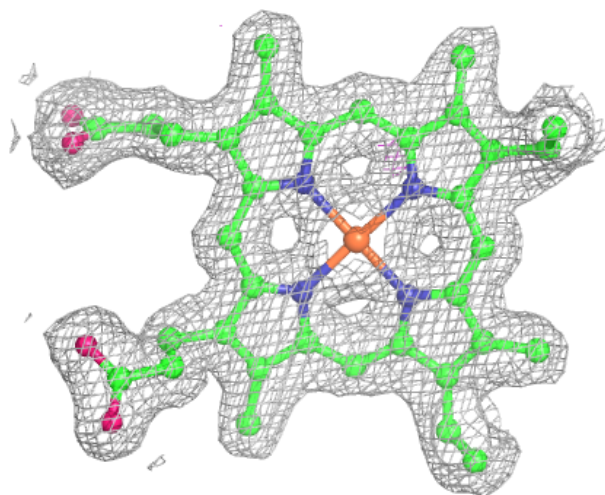
In the following table, the Atoms column lists the number of modelled atoms in the group and the number defined in the chemical component dictionary. The B-factors column lists the minimum, median, 95th percentile and maximum values of B factors of atoms in the group. The column labelled 'Q< 0.9' lists the number of atoms with occupancy less than 0.9.

Mol	Type	Chain	Res	Atoms	RSCC	RSR	B-factors(Å ²)	Q<0.9
6	1PE	F	387	16/16	0.89	0.10	29,38,47,47	0
7	PG4	F	388	13/13	0.93	0.10	41,45,55,55	0
8	ACT	F	389	4/4	0.96	0.10	34,36,38,38	0
5	HEC	B	600	43/43	0.99	0.06	3,9,10,11	0
5	HEC	A	500	43/43	0.99	0.05	4,9,12,16	0
5	HEC	A	600	43/43	0.99	0.06	4,9,12,14	0
5	HEC	B	500	43/43	0.99	0.05	7,11,14,20	0
4	CA	B	400	1/1	1.00	0.04	10,10,10,10	0
4	CA	A	400	1/1	1.00	0.03	9,9,9,9	0

The following is a graphical depiction of the model fit to experimental electron density of all instances of the Ligand of Interest. In addition, ligands with molecular weight > 250 and outliers as shown on the geometry validation Tables will also be included. Each fit is shown from different orientation to approximate a three-dimensional view.

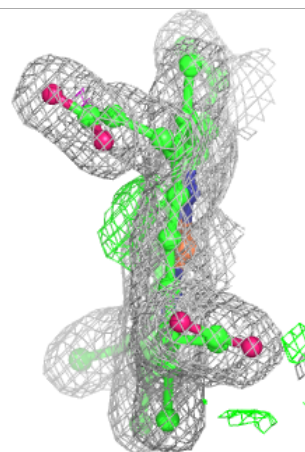
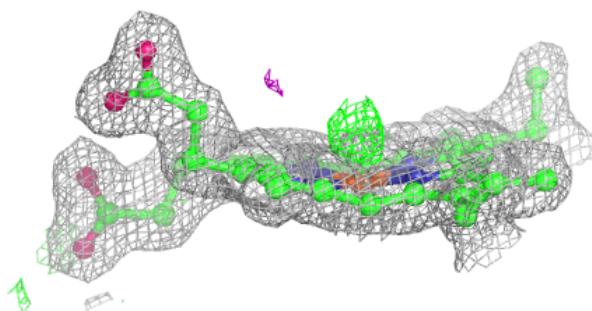
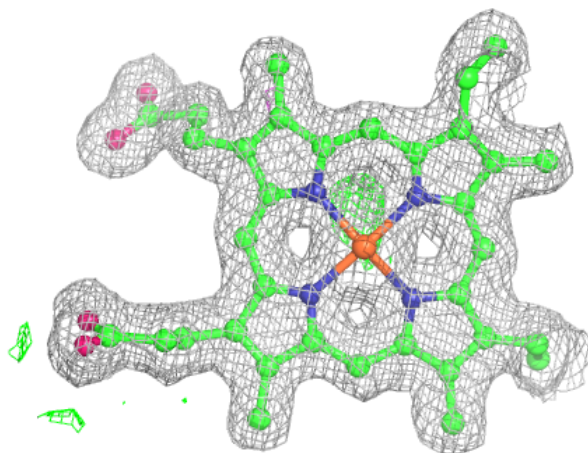
Electron density around HEC B 600:

$2mF_o-DF_c$ (at 0.7 rmsd) in gray
 mF_o-DF_c (at 3 rmsd) in purple (negative)
and green (positive)



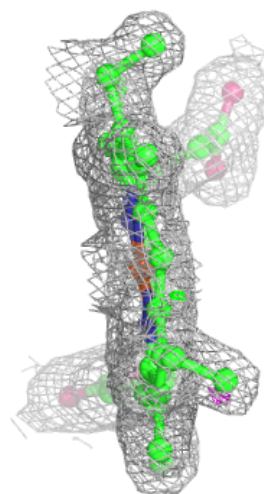
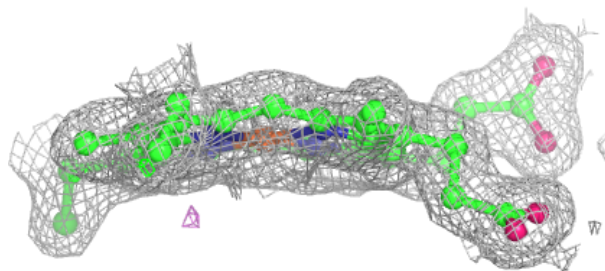
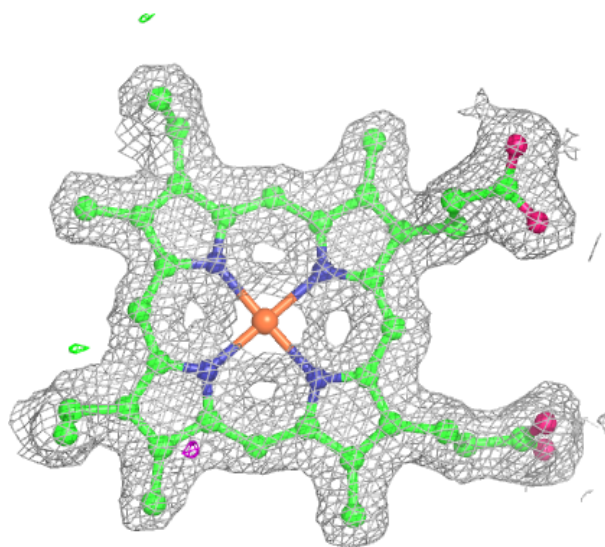
Electron density around HEC A 500:

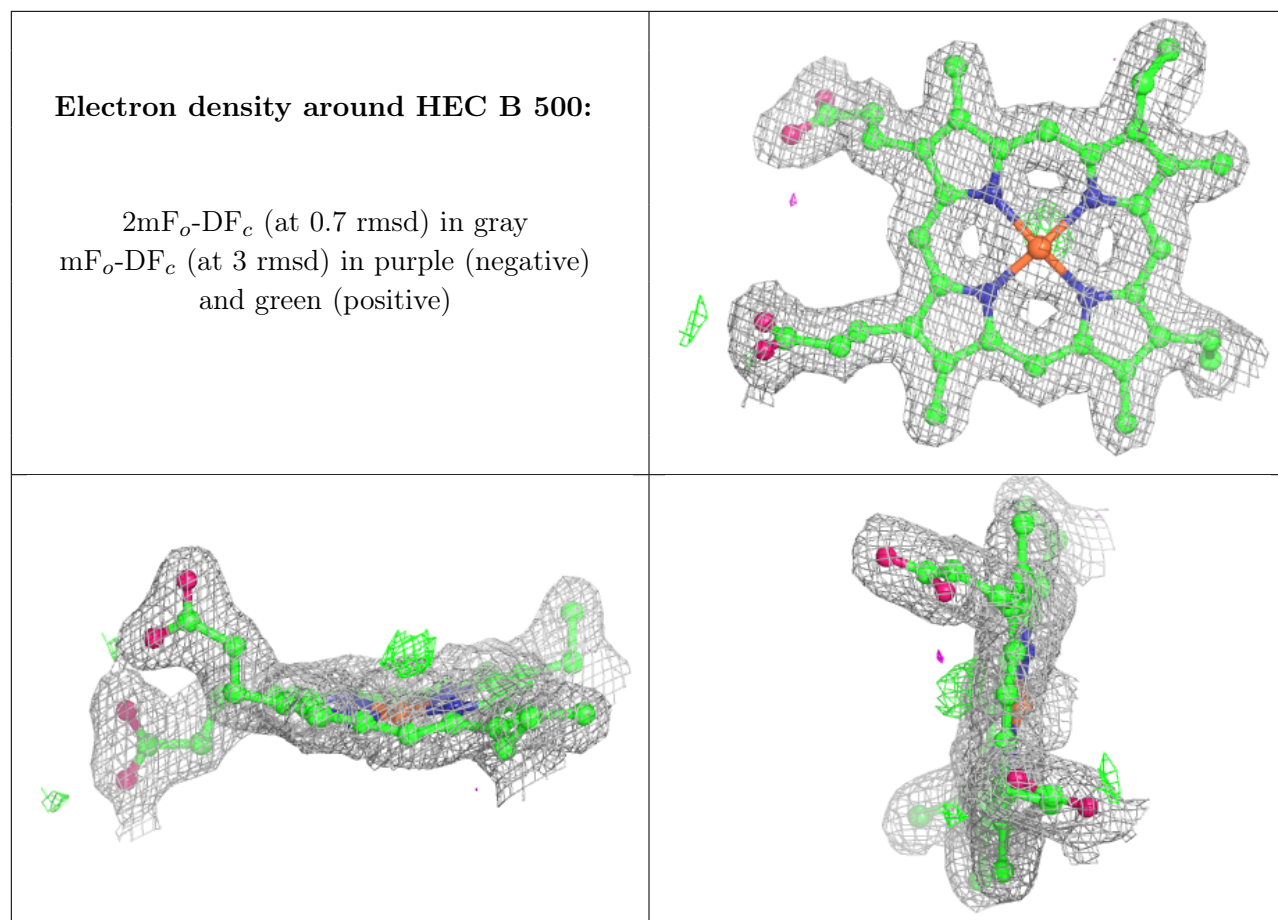
$2mF_o-DF_c$ (at 0.7 rmsd) in gray
 mF_o-DF_c (at 3 rmsd) in purple (negative)
and green (positive)



Electron density around HEC A 600:

$2mF_o-DF_c$ (at 0.7 rmsd) in gray
 mF_o-DF_c (at 3 rmsd) in purple (negative)
and green (positive)





6.5 Other polymers [i](#)

There are no such residues in this entry.