



# wwPDB X-ray Structure Validation Summary Report ⓘ

Aug 20, 2020 – 11:12 PM BST

PDB ID : 5L0B  
Title : Crystal Structure of Autotaxin and Compound 1  
Authors : Durbin, J.D.  
Deposited on : 2016-07-27  
Resolution : 2.41 Å(reported)

This is a wwPDB X-ray Structure Validation Summary Report for a publicly released PDB entry.

We welcome your comments at [validation@mail.wwpdb.org](mailto:validation@mail.wwpdb.org)

A user guide is available at

<https://www.wwpdb.org/validation/2017/XrayValidationReportHelp>

with specific help available everywhere you see the ⓘ symbol.

---

The following versions of software and data (see [references ⓘ](#)) were used in the production of this report:

MolProbity : 4.02b-467  
Mogul : 1.8.5 (274361), CSD as541be (2020)  
Xtriage (Phenix) : 1.13  
EDS : 2.13.1  
buster-report : 1.1.7 (2018)  
Percentile statistics : 20191225.v01 (using entries in the PDB archive December 25th 2019)  
Refmac : 5.8.0158  
CCP4 : 7.0.044 (Gargrove)  
Ideal geometry (proteins) : Engh & Huber (2001)  
Ideal geometry (DNA, RNA) : Parkinson et al. (1996)  
Validation Pipeline (wwPDB-VP) : 2.13.1

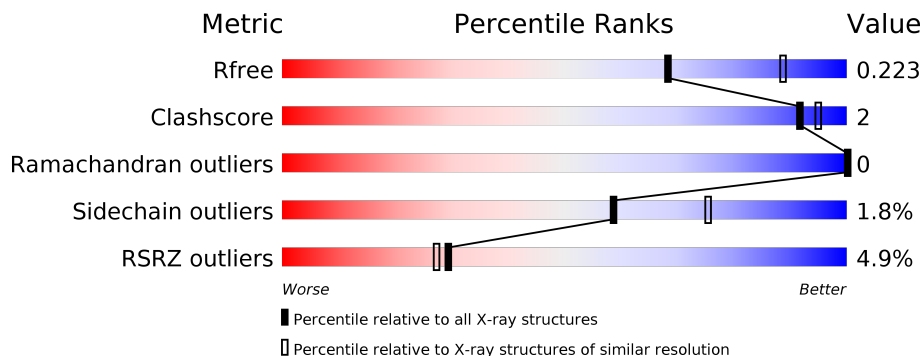
# 1 Overall quality at a glance

The following experimental techniques were used to determine the structure:

*X-RAY DIFFRACTION*

The reported resolution of this entry is 2.41 Å.

Percentile scores (ranging between 0-100) for global validation metrics of the entry are shown in the following graphic. The table shows the number of entries on which the scores are based.



Metric	Whole archive (#Entries)	Similar resolution (#Entries, resolution range(Å))
$R_{free}$	130704	4647 (2.44-2.40)
Clashscore	141614	5161 (2.44-2.40)
Ramachandran outliers	138981	5073 (2.44-2.40)
Sidechain outliers	138945	5074 (2.44-2.40)
RSRZ outliers	127900	4543 (2.44-2.40)

The table below summarises the geometric issues observed across the polymeric chains and their fit to the electron density. The red, orange, yellow and green segments on the lower bar indicate the fraction of residues that contain outliers for  $\geq 3$ , 2, 1 and 0 types of geometric quality criteria respectively. A grey segment represents the fraction of residues that are not modelled. The numeric value for each fraction is indicated below the corresponding segment, with a dot representing fractions  $\leq 5\%$ . The upper red bar (where present) indicates the fraction of residues that have poor fit to the electron density. The numeric value is given above the bar.

Mol	Chain	Length	Quality of chain
1	A	871	 4% 84% 6% 11%
1	B	871	 5% 85% 5% 10%
2	C	9	 33% 67%
3	D	6	 33% 67%

## 2 Entry composition

There are 8 unique types of molecules in this entry. The entry contains 13448 atoms, of which 0 are hydrogens and 0 are deuteriums.

In the tables below, the ZeroOcc column contains the number of atoms modelled with zero occupancy, the AltConf column contains the number of residues with at least one atom in alternate conformation and the Trace column contains the number of residues modelled with at most 2 atoms.

- Molecule 1 is a protein called Ectonucleotide pyrophosphatase/phosphodiesterase family member 2.

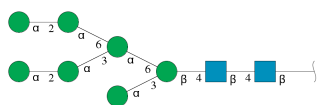
Mol	Chain	Residues	Atoms					ZeroOcc	AltConf	Trace
			Total	C	N	O	S			
1	A	779	6293	3987	1084	1173	49	0	0	0
1	B	781	6307	3995	1086	1177	49	0	0	0

There are 22 discrepancies between the modelled and reference sequences:

Chain	Residue	Modelled	Actual	Comment	Reference
A	591	THR	ARG	engineered mutation	UNP Q64610
A	592	GLU	LYS	engineered mutation	UNP Q64610
A	863	ALA	-	expression tag	UNP Q64610
A	864	ALA	-	expression tag	UNP Q64610
A	865	ALA	-	expression tag	UNP Q64610
A	866	HIS	-	expression tag	UNP Q64610
A	867	HIS	-	expression tag	UNP Q64610
A	868	HIS	-	expression tag	UNP Q64610
A	869	HIS	-	expression tag	UNP Q64610
A	870	HIS	-	expression tag	UNP Q64610
A	871	HIS	-	expression tag	UNP Q64610
B	591	THR	ARG	engineered mutation	UNP Q64610
B	592	GLU	LYS	engineered mutation	UNP Q64610
B	863	ALA	-	expression tag	UNP Q64610
B	864	ALA	-	expression tag	UNP Q64610
B	865	ALA	-	expression tag	UNP Q64610
B	866	HIS	-	expression tag	UNP Q64610
B	867	HIS	-	expression tag	UNP Q64610
B	868	HIS	-	expression tag	UNP Q64610
B	869	HIS	-	expression tag	UNP Q64610
B	870	HIS	-	expression tag	UNP Q64610
B	871	HIS	-	expression tag	UNP Q64610

- Molecule 2 is an oligosaccharide called alpha-D-mannopyranose-(1-2)-alpha-D-mannopyran

ose-(1-3)-[alpha-D-mannopyranose-(1-2)-alpha-D-mannopyranose-(1-6)]alpha-D-mannopyranose-(1-6)-[alpha-D-mannopyranose-(1-3)]beta-D-mannopyranose-(1-4)-2-acetamido-2-deoxy-beta-D-glucopyranose-(1-4)-2-acetamido-2-deoxy-beta-D-glucopyranose.



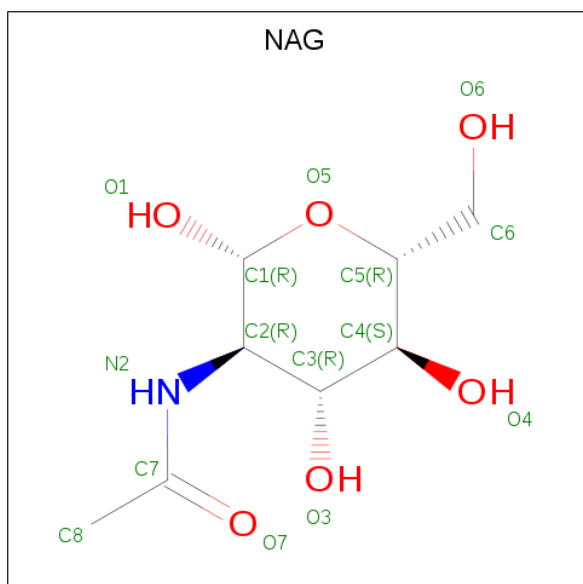
Mol	Chain	Residues	Atoms				ZeroOcc	AltConf	Trace
			Total	C	N	O			
2	C	9	105	58	2	45	0	0	0

- Molecule 3 is an oligosaccharide called alpha-D-mannopyranose-(1-2)-alpha-D-mannopyranose-(1-3)-alpha-D-mannopyranose-(1-6)-beta-D-mannopyranose-(1-4)-2-acetamido-2-deoxy-beta-D-glucopyranose-(1-4)-2-acetamido-2-deoxy-beta-D-glucopyranose.



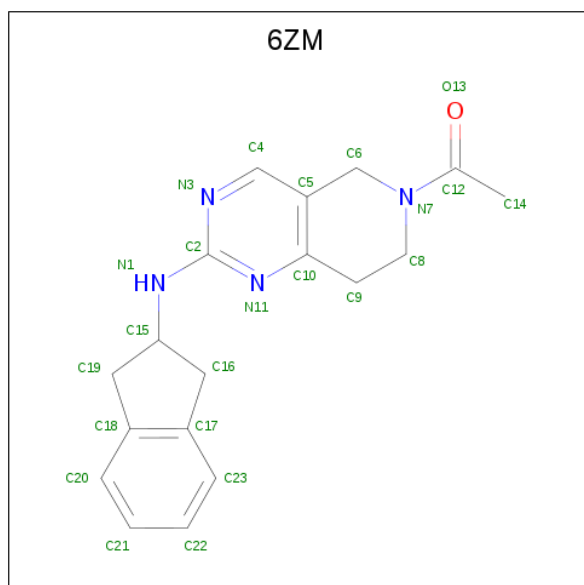
Mol	Chain	Residues	Atoms				ZeroOcc	AltConf	Trace
			Total	C	N	O			
3	D	6	72	40	2	30	0	0	0

- Molecule 4 is 2-acetamido-2-deoxy-beta-D-glucopyranose (three-letter code: NAG) (formula: C<sub>8</sub>H<sub>15</sub>NO<sub>6</sub>).



Mol	Chain	Residues	Atoms				ZeroOcc	AltConf
4	A	1	Total	C	N	O	0	0
			14	8	1	5		
4	B	1	Total	C	N	O	0	0
			14	8	1	5		

- Molecule 5 is 1-{2-[(2,3-dihydro-1H-inden-2-yl)amino]-7,8-dihydropyrido[4,3-d]pyrimidin-6(5H)-yl}ethan-1-one (three-letter code: 6ZM) (formula: C<sub>18</sub>H<sub>20</sub>N<sub>4</sub>O).



Mol	Chain	Residues	Atoms				ZeroOcc	AltConf
5	A	1	Total	C	N	O	0	0
			23	18	4	1		
5	B	1	Total	C	N	O	0	0
			23	18	4	1		

- Molecule 6 is ZINC ION (three-letter code: ZN) (formula: Zn).

Mol	Chain	Residues	Atoms		ZeroOcc	AltConf
6	B	3	Total	Zn	0	0
			3	3		
6	A	3	Total	Zn	0	0
			3	3		

- Molecule 7 is CHLORIDE ION (three-letter code: CL) (formula: Cl).

Mol	Chain	Residues	Atoms		ZeroOcc	AltConf
7	B	1	Total	Cl	0	0
			1	1		

*Continued on next page...*

*Continued from previous page...*


Mol	Chain	Residues	Atoms	ZeroOcc	AltConf
7	A	1	Total Cl 1 1	0	0

- Molecule 8 is water.

Mol	Chain	Residues	Atoms	ZeroOcc	AltConf
8	A	341	Total O 341 341	0	0
8	B	248	Total O 248 248	0	0



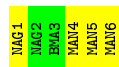
1-3)]beta-D-mannopyranose-(1-4)-2-acetamido-2-deoxy-beta-D-glucopyranose-(1-4)-2-acetamido-2-deoxy-beta-D-glucopyranose

Chain C:  33% 67%



• Molecule 3: alpha-D-mannopyranose-(1-2)-alpha-D-mannopyranose-(1-3)-alpha-D-mannopyranose-(1-6)-beta-D-mannopyranose-(1-4)-2-acetamido-2-deoxy-beta-D-glucopyranose-(1-4)-2-acetamido-2-deoxy-beta-D-glucopyranose

Chain D:  33% 67%





## 4 Data and refinement statistics

Property	Value	Source
Space group	C 1 2 1	Depositor
Cell constants a, b, c, $\alpha$ , $\beta$ , $\gamma$	182.83Å 96.73Å 136.28Å 90.00° 112.86° 90.00°	Depositor
Resolution (Å)	19.61 – 2.41 19.61 – 2.41	Depositor EDS
% Data completeness (in resolution range)	99.9 (19.61-2.41) 99.9 (19.61-2.41)	Depositor EDS
$R_{merge}$	(Not available)	Depositor
$R_{sym}$	0.11	Depositor
$\langle I/\sigma(I) \rangle$ <sup>1</sup>	2.14 (at 2.41Å)	Xtrriage
Refinement program	BUSTER 2.11.5	Depositor
R, $R_{free}$	0.176 , 0.209 0.186 , 0.223	Depositor DCC
$R_{free}$ test set	1067 reflections (1.26%)	wwPDB-VP
Wilson B-factor (Å <sup>2</sup> )	36.6	Xtrriage
Anisotropy	0.382	Xtrriage
Bulk solvent $k_{sol}$ (e/Å <sup>3</sup> ), $B_{sol}$ (Å <sup>2</sup> )	0.35 , 60.6	EDS
L-test for twinning <sup>2</sup>	$\langle  L  \rangle = 0.48$ , $\langle L^2 \rangle = 0.31$	Xtrriage
Estimated twinning fraction	No twinning to report.	Xtrriage
$F_o, F_c$ correlation	0.94	EDS
Total number of atoms	13448	wwPDB-VP
Average B, all atoms (Å <sup>2</sup> )	44.0	wwPDB-VP

Xtrriage's analysis on translational NCS is as follows: *The largest off-origin peak in the Patterson function is 3.22% of the height of the origin peak. No significant pseudotranslation is detected.*

<sup>1</sup>Intensities estimated from amplitudes.

<sup>2</sup>Theoretical values of  $\langle |L| \rangle$ ,  $\langle L^2 \rangle$  for acentric reflections are 0.5, 0.333 respectively for untwinned datasets, and 0.375, 0.2 for perfectly twinned datasets.

## 5 Model quality

### 5.1 Standard geometry

Bond lengths and bond angles in the following residue types are not validated in this section: ZN, BMA, NAG, 6ZM, CL, MAN

The Z score for a bond length (or angle) is the number of standard deviations the observed value is removed from the expected value. A bond length (or angle) with  $|Z| > 5$  is considered an outlier worth inspection. RMSZ is the root-mean-square of all Z scores of the bond lengths (or angles).

Mol	Chain	Bond lengths		Bond angles	
		RMSZ	# Z  >5	RMSZ	# Z  >5
1	A	0.51	0/6471	0.67	0/8779
1	B	0.49	0/6485	0.67	0/8798
All	All	0.50	0/12956	0.67	0/17577

There are no bond length outliers.

There are no bond angle outliers.

There are no chirality outliers.

There are no planarity outliers.

### 5.2 Too-close contacts

In the following table, the Non-H and H(model) columns list the number of non-hydrogen atoms and hydrogen atoms in the chain respectively. The H(added) column lists the number of hydrogen atoms added and optimized by MolProbity. The Clashes column lists the number of clashes within the asymmetric unit, whereas Symm-Clashes lists symmetry related clashes.

Mol	Chain	Non-H	H(model)	H(added)	Clashes	Symm-Clashes
1	A	6293	0	6028	23	0
1	B	6307	0	6042	16	0
2	C	105	0	88	0	0
3	D	72	0	61	0	0
4	A	14	0	13	0	0
4	B	14	0	13	0	0
5	A	23	0	0	0	0
5	B	23	0	0	0	0
6	A	3	0	0	0	0
6	B	3	0	0	0	0
7	A	1	0	0	0	0

*Continued on next page...*

Continued from previous page...

Mol	Chain	Non-H	H(model)	H(added)	Clashes	Symm-Clashes
7	B	1	0	0	0	0
8	A	341	0	0	1	0
8	B	248	0	0	1	0
All	All	13448	0	12245	39	0

The all-atom clashscore is defined as the number of clashes found per 1000 atoms (including hydrogen atoms). The all-atom clashscore for this structure is 2.

The worst 5 of 39 close contacts within the same asymmetric unit are listed below, sorted by their clash magnitude.

Atom-1	Atom-2	Interatomic distance (Å)	Clash overlap (Å)
1:A:163:PRO:HB3	1:A:350:CYS:O	1.92	0.70
1:A:171:ASP:O	1:A:310:PRO:HD2	2.02	0.59
1:B:171:ASP:O	1:B:310:PRO:HD2	2.04	0.57
1:A:222:PRO:HA	1:A:225:HIS:CE1	2.40	0.57
1:B:222:PRO:HA	1:B:225:HIS:CE1	2.41	0.56

There are no symmetry-related clashes.

## 5.3 Torsion angles [i](#)

### 5.3.1 Protein backbone [i](#)

In the following table, the Percentiles column shows the percent Ramachandran outliers of the chain as a percentile score with respect to all X-ray entries followed by that with respect to entries of similar resolution.

The Analysed column shows the number of residues for which the backbone conformation was analysed, and the total number of residues.

Mol	Chain	Analysed	Favoured	Allowed	Outliers	Percentiles	
1	A	773/871 (89%)	743 (96%)	30 (4%)	0	100	100
1	B	775/871 (89%)	742 (96%)	33 (4%)	0	100	100
All	All	1548/1742 (89%)	1485 (96%)	63 (4%)	0	100	100

There are no Ramachandran outliers to report.

### 5.3.2 Protein sidechains [i](#)

In the following table, the Percentiles column shows the percent sidechain outliers of the chain as a percentile score with respect to all X-ray entries followed by that with respect to entries of similar resolution.

The Analysed column shows the number of residues for which the sidechain conformation was analysed, and the total number of residues.

Mol	Chain	Analysed	Rotameric	Outliers	Percentiles	
1	A	707/786 (90%)	697 (99%)	10 (1%)	67	81
1	B	709/786 (90%)	694 (98%)	15 (2%)	53	71
All	All	1416/1572 (90%)	1391 (98%)	25 (2%)	59	75

5 of 25 residues with a non-rotameric sidechain are listed below:

Mol	Chain	Res	Type
1	B	124	LEU
1	B	162	ARG
1	B	659	SER
1	B	147	ASP
1	B	184	VAL

Some sidechains can be flipped to improve hydrogen bonding and reduce clashes. There are no such sidechains identified.

### 5.3.3 RNA [i](#)

There are no RNA molecules in this entry.

## 5.4 Non-standard residues in protein, DNA, RNA chains [i](#)

There are no non-standard protein/DNA/RNA residues in this entry.

## 5.5 Carbohydrates [i](#)

15 monosaccharides are modelled in this entry.

In the following table, the Counts columns list the number of bonds (or angles) for which Mogul statistics could be retrieved, the number of bonds (or angles) that are observed in the model and the number of bonds (or angles) that are defined in the Chemical Component Dictionary. The Link column lists molecule types, if any, to which the group is linked. The Z score for a bond length (or angle) is the number of standard deviations the observed value is removed from the

expected value. A bond length (or angle) with  $|Z| > 2$  is considered an outlier worth inspection. RMSZ is the root-mean-square of all Z scores of the bond lengths (or angles).

Mol	Type	Chain	Res	Link	Bond lengths			Bond angles		
					Counts	RMSZ	# $ Z  > 2$	Counts	RMSZ	# $ Z  > 2$
2	NAG	C	1	1,2	14,14,15	0.37	0	17,19,21	0.88	1 (5%)
2	NAG	C	2	2	14,14,15	0.35	0	17,19,21	0.74	0
2	BMA	C	3	2	11,11,12	0.67	0	15,15,17	1.06	1 (6%)
2	MAN	C	4	2	11,11,12	0.48	0	15,15,17	0.90	1 (6%)
2	MAN	C	5	2	11,11,12	0.48	0	15,15,17	0.69	1 (6%)
2	MAN	C	6	2	11,11,12	0.40	0	15,15,17	0.84	1 (6%)
2	MAN	C	7	2	11,11,12	0.34	0	15,15,17	0.85	1 (6%)
2	MAN	C	8	2	11,11,12	0.29	0	15,15,17	0.58	0
2	MAN	C	9	2	11,11,12	0.36	0	15,15,17	0.62	0
3	NAG	D	1	1,3	14,14,15	0.36	0	17,19,21	0.92	1 (5%)
3	NAG	D	2	3	14,14,15	0.32	0	17,19,21	0.68	0
3	BMA	D	3	3	11,11,12	0.74	0	15,15,17	0.97	0
3	MAN	D	4	3	11,11,12	0.46	0	15,15,17	0.94	1 (6%)
3	MAN	D	5	3	11,11,12	0.40	0	15,15,17	0.73	1 (6%)
3	MAN	D	6	3	11,11,12	0.38	0	15,15,17	0.89	1 (6%)

In the following table, the Chirals column lists the number of chiral outliers, the number of chiral centers analysed, the number of these observed in the model and the number defined in the Chemical Component Dictionary. Similar counts are reported in the Torsion and Rings columns. '-' means no outliers of that kind were identified.

Mol	Type	Chain	Res	Link	Chirals	Torsions	Rings
2	NAG	C	1	1,2	-	0/6/23/26	0/1/1/1
2	NAG	C	2	2	-	0/6/23/26	0/1/1/1
2	BMA	C	3	2	-	0/2/19/22	0/1/1/1
2	MAN	C	4	2	-	0/2/19/22	0/1/1/1
2	MAN	C	5	2	-	0/2/19/22	0/1/1/1
2	MAN	C	6	2	-	0/2/19/22	0/1/1/1
2	MAN	C	7	2	-	0/2/19/22	0/1/1/1
2	MAN	C	8	2	-	0/2/19/22	0/1/1/1
2	MAN	C	9	2	-	1/2/19/22	0/1/1/1
3	NAG	D	1	1,3	-	0/6/23/26	0/1/1/1
3	NAG	D	2	3	-	0/6/23/26	0/1/1/1
3	BMA	D	3	3	-	0/2/19/22	0/1/1/1
3	MAN	D	4	3	-	0/2/19/22	0/1/1/1
3	MAN	D	5	3	-	0/2/19/22	0/1/1/1
3	MAN	D	6	3	-	0/2/19/22	0/1/1/1

There are no bond length outliers.

The worst 5 of 10 bond angle outliers are listed below:

Mol	Chain	Res	Type	Atoms	Z	Observed(°)	Ideal(°)
2	C	7	MAN	C1-O5-C5	3.00	116.26	112.19
3	D	6	MAN	C1-O5-C5	2.91	116.14	112.19
2	C	6	MAN	C1-O5-C5	2.83	116.03	112.19
3	D	1	NAG	O5-C1-C2	-2.81	106.85	111.29
3	D	4	MAN	C1-O5-C5	2.78	115.96	112.19

There are no chirality outliers.

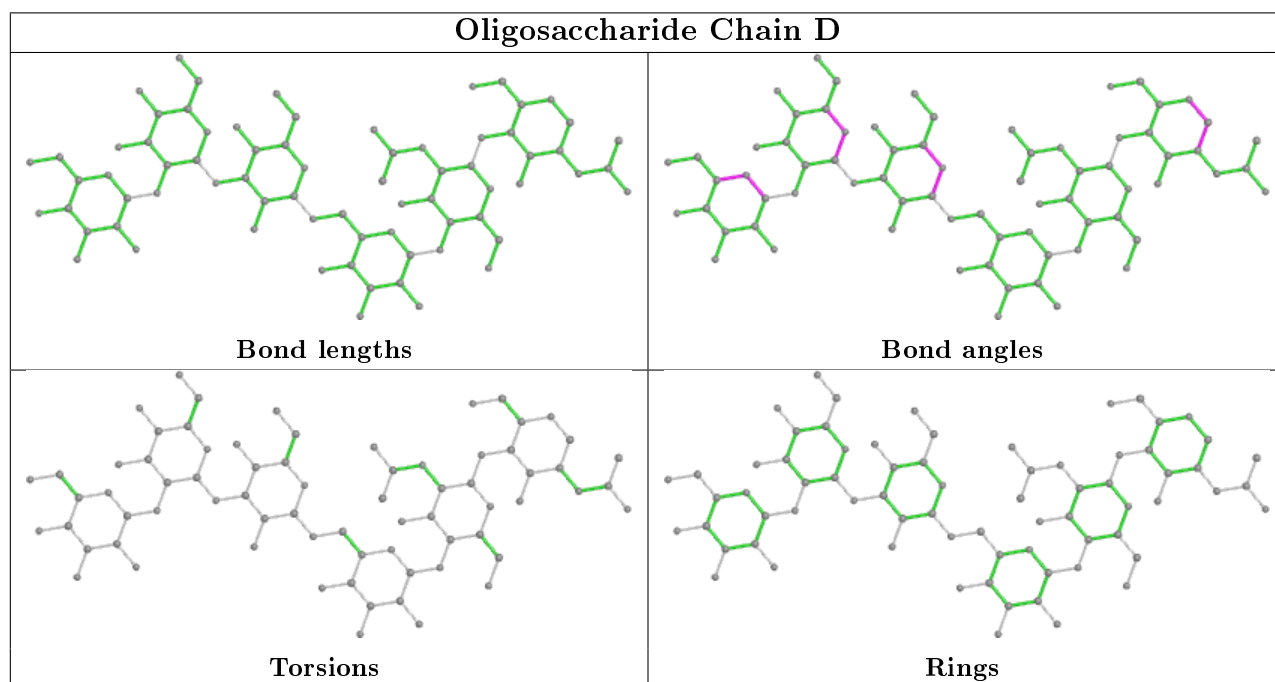
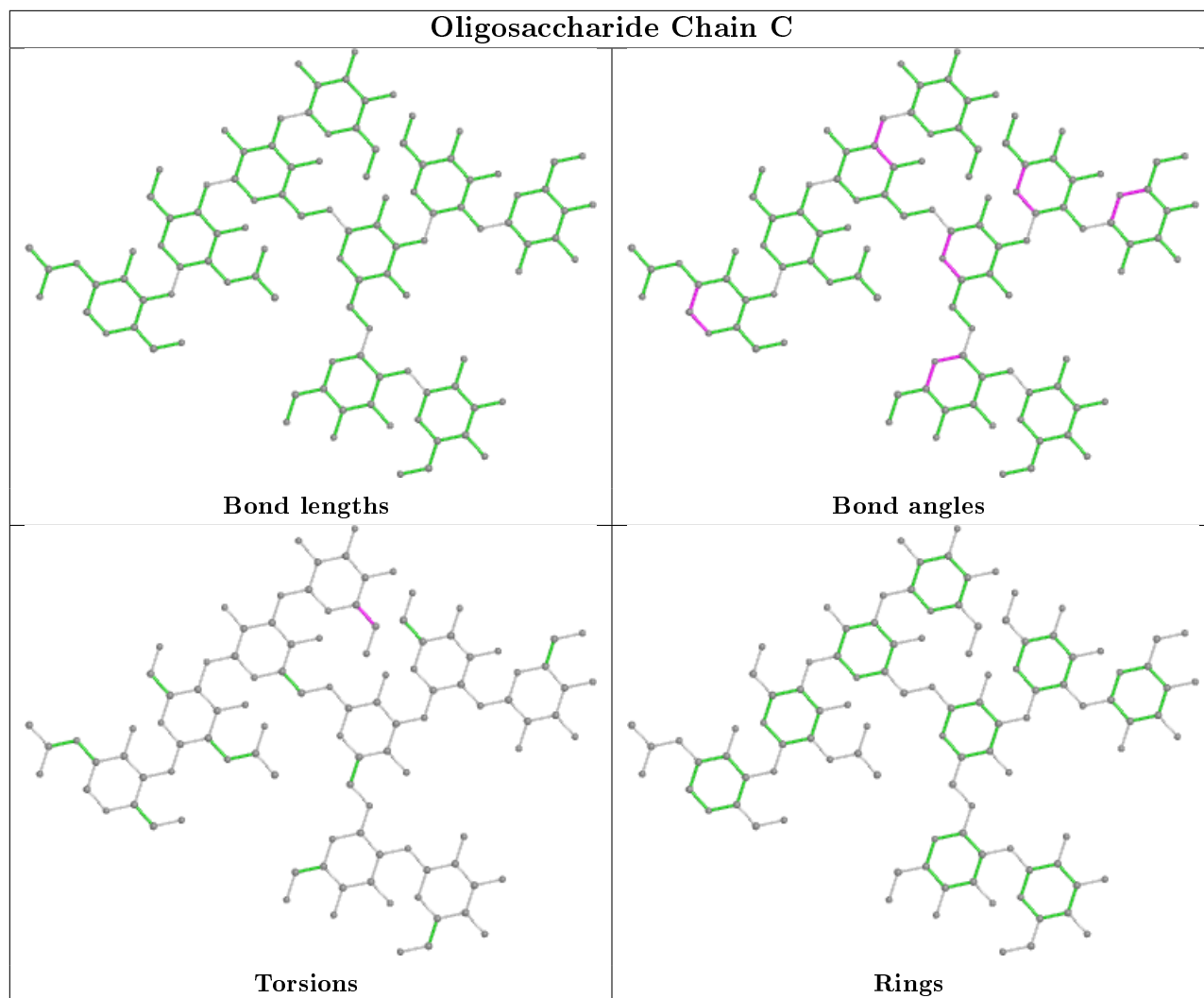
All (1) torsion outliers are listed below:

Mol	Chain	Res	Type	Atoms
2	C	9	MAN	C4-C5-C6-O6

There are no ring outliers.

No monomer is involved in short contacts.

The following is a two-dimensional graphical depiction of Mogul quality analysis of bond lengths, bond angles, torsion angles, and ring geometry for oligosaccharide.



## 5.6 Ligand geometry

Of 12 ligands modelled in this entry, 8 are monoatomic - leaving 4 for Mogul analysis.

In the following table, the Counts columns list the number of bonds (or angles) for which Mogul statistics could be retrieved, the number of bonds (or angles) that are observed in the model and the number of bonds (or angles) that are defined in the Chemical Component Dictionary. The Link column lists molecule types, if any, to which the group is linked. The Z score for a bond length (or angle) is the number of standard deviations the observed value is removed from the expected value. A bond length (or angle) with  $|Z| > 2$  is considered an outlier worth inspection. RMSZ is the root-mean-square of all Z scores of the bond lengths (or angles).

Mol	Type	Chain	Res	Link	Bond lengths			Bond angles		
					Counts	RMSZ	# Z  > 2	Counts	RMSZ	# Z  > 2
4	NAG	B	907	1	14,14,15	0.29	0	17,19,21	0.58	0
5	6ZM	A	911	-	26,26,26	1.31	1 (3%)	32,37,37	1.91	11 (34%)
5	6ZM	B	908	-	26,26,26	1.28	1 (3%)	32,37,37	2.06	12 (37%)
4	NAG	A	910	1	14,14,15	0.28	0	17,19,21	0.58	0

In the following table, the Chirals column lists the number of chiral outliers, the number of chiral centers analysed, the number of these observed in the model and the number defined in the Chemical Component Dictionary. Similar counts are reported in the Torsion and Rings columns. '-' means no outliers of that kind were identified.

Mol	Type	Chain	Res	Link	Chirals	Torsions	Rings
4	NAG	B	907	1	-	0/6/23/26	0/1/1/1
5	6ZM	A	911	-	-	0/8/25/25	0/4/4/4
5	6ZM	B	908	-	-	4/8/25/25	0/4/4/4
4	NAG	A	910	1	-	0/6/23/26	0/1/1/1

All (2) bond length outliers are listed below:

Mol	Chain	Res	Type	Atoms	Z	Observed(Å)	Ideal(Å)
5	A	911	6ZM	C2-N1	5.60	1.41	1.34
5	B	908	6ZM	C2-N1	5.05	1.41	1.34

The worst 5 of 23 bond angle outliers are listed below:

Mol	Chain	Res	Type	Atoms	Z	Observed(°)	Ideal(°)
5	B	908	6ZM	C14-C12-N7	-4.60	112.90	118.26
5	A	911	6ZM	O13-C12-N7	4.53	126.57	121.02
5	A	911	6ZM	C2-N1-C15	-4.29	117.07	124.31
5	B	908	6ZM	N1-C2-N11	4.05	123.26	117.18
5	B	908	6ZM	C2-N1-C15	-3.55	118.32	124.31



There are no chirality outliers.

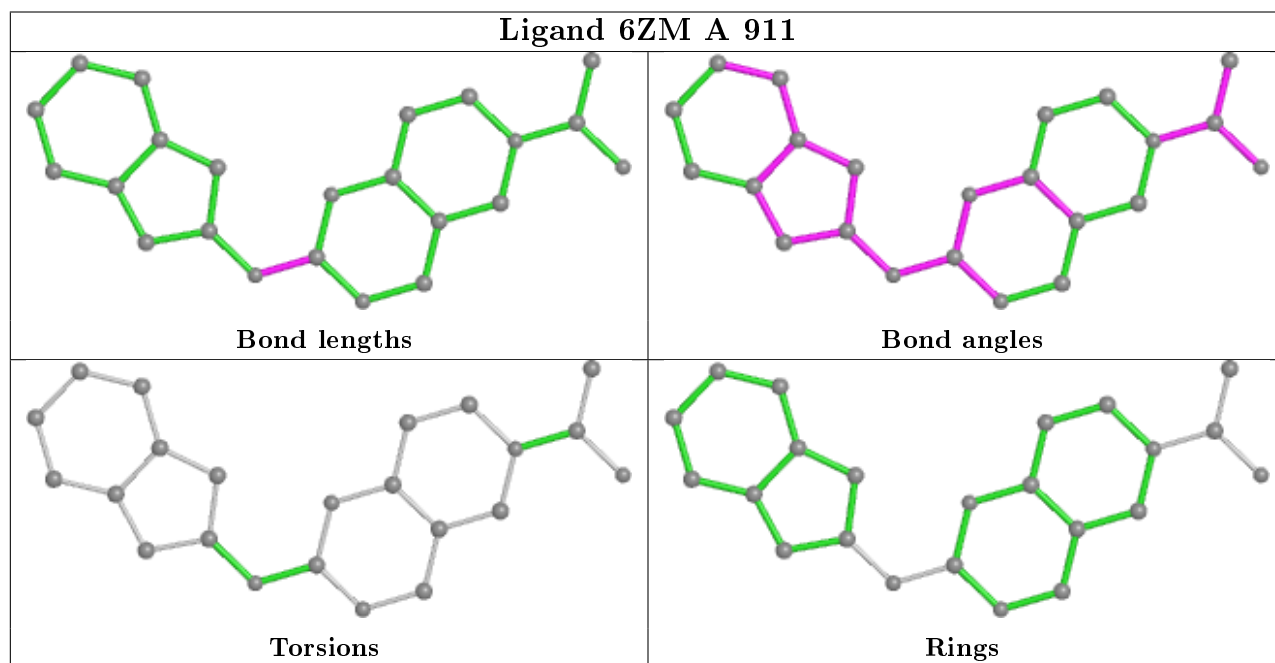
All (4) torsion outliers are listed below:

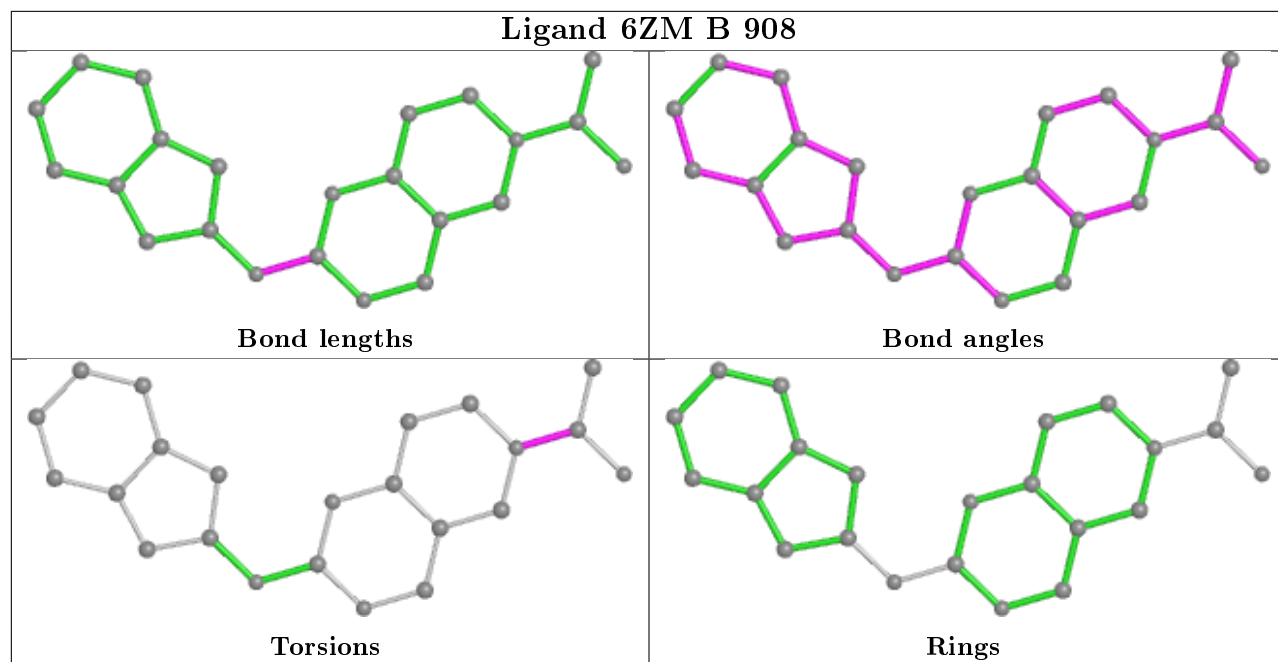
Mol	Chain	Res	Type	Atoms
5	B	908	6ZM	O13-C12-N7-C6
5	B	908	6ZM	C14-C12-N7-C6
5	B	908	6ZM	O13-C12-N7-C8
5	B	908	6ZM	C14-C12-N7-C8

There are no ring outliers.

No monomer is involved in short contacts.

The following is a two-dimensional graphical depiction of Mogul quality analysis of bond lengths, bond angles, torsion angles, and ring geometry for all instances of the Ligand of Interest. In addition, ligands with molecular weight > 250 and outliers as shown on the validation Tables will also be included. For torsion angles, if less than 5% of the Mogul distribution of torsion angles is within 10 degrees of the torsion angle in question, then that torsion angle is considered an outlier. Any bond that is central to one or more torsion angles identified as an outlier by Mogul will be highlighted in the graph. For rings, the root-mean-square deviation (RMSD) between the ring in question and similar rings identified by Mogul is calculated over all ring torsion angles. If the average RMSD is greater than 60 degrees and the minimal RMSD between the ring in question and any Mogul-identified rings is also greater than 60 degrees, then that ring is considered an outlier. The outliers are highlighted in purple. The color gray indicates Mogul did not find sufficient equivalents in the CSD to analyse the geometry.





## 5.7 Other polymers [i](#)

There are no such residues in this entry.

## 5.8 Polymer linkage issues [i](#)

There are no chain breaks in this entry.

## 6 Fit of model and data [i](#)

### 6.1 Protein, DNA and RNA chains [i](#)

In the following table, the column labelled '#RSRZ > 2' contains the number (and percentage) of RSRZ outliers, followed by percent RSRZ outliers for the chain as percentile scores relative to all X-ray entries and entries of similar resolution. The OWAB column contains the minimum, median, 95<sup>th</sup> percentile and maximum values of the occupancy-weighted average B-factor per residue. The column labelled 'Q < 0.9' lists the number of (and percentage) of residues with an average occupancy less than 0.9.

Mol	Chain	Analysed	<RSRZ>	#RSRZ>2	OWAB(Å <sup>2</sup> )	Q<0.9
1	A	779/871 (89%)	-0.12	34 (4%) 34 32	19, 37, 71, 102	0
1	B	781/871 (89%)	-0.01	42 (5%) 25 23	21, 42, 79, 106	0
All	All	1560/1742 (89%)	-0.06	76 (4%) 29 27	19, 40, 74, 106	0

The worst 5 of 76 RSRZ outliers are listed below:

Mol	Chain	Res	Type	RSRZ
1	B	71	PRO	7.0
1	A	71	PRO	5.8
1	B	469	PHE	5.8
1	B	320	PHE	5.5
1	B	458	LEU	5.4

### 6.2 Non-standard residues in protein, DNA, RNA chains [i](#)

There are no non-standard protein/DNA/RNA residues in this entry.

### 6.3 Carbohydrates [i](#)

In the following table, the Atoms column lists the number of modelled atoms in the group and the number defined in the chemical component dictionary. The B-factors column lists the minimum, median, 95<sup>th</sup> percentile and maximum values of B factors of atoms in the group. The column labelled 'Q < 0.9' lists the number of atoms with occupancy less than 0.9.

Mol	Type	Chain	Res	Atoms	RSCC	RSR	B-factors(Å <sup>2</sup> )	Q<0.9
3	BMA	D	3	11/12	0.79	0.36	73,77,79,79	0
2	MAN	C	9	11/12	0.82	0.36	86,89,90,91	0
3	MAN	D	4	11/12	0.83	0.33	67,75,77,80	0
2	BMA	C	3	11/12	0.84	0.38	65,75,79,82	0
2	MAN	C	8	11/12	0.84	0.24	91,94,98,100	0

*Continued on next page...*

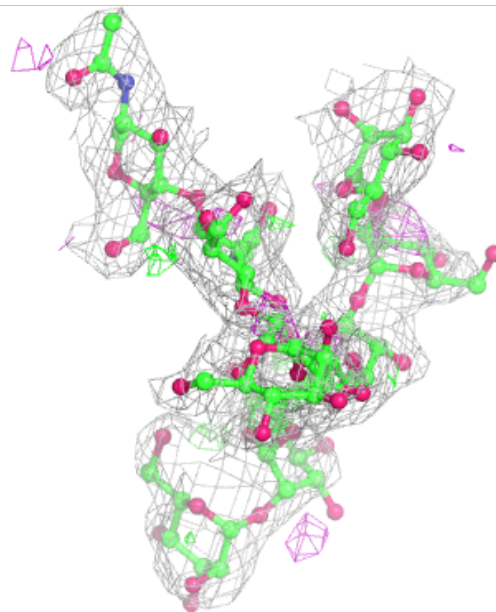
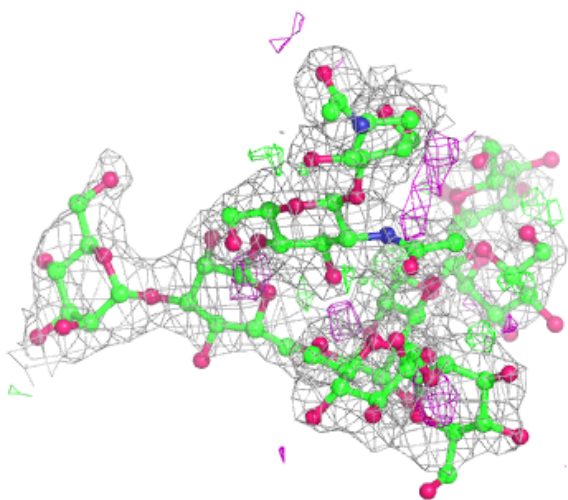
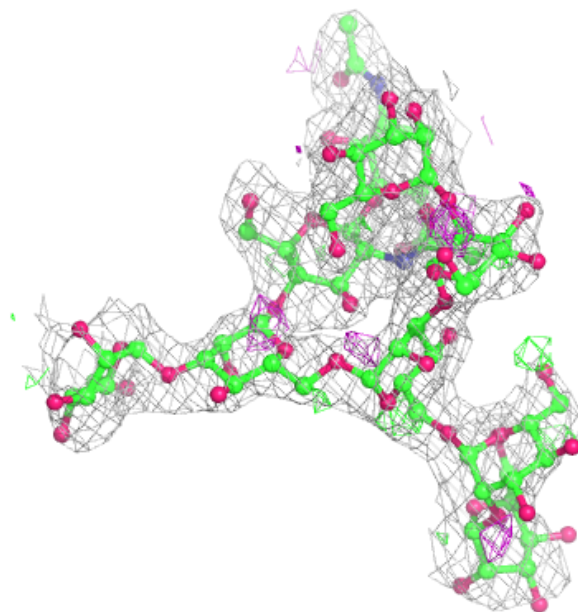
*Continued from previous page...*

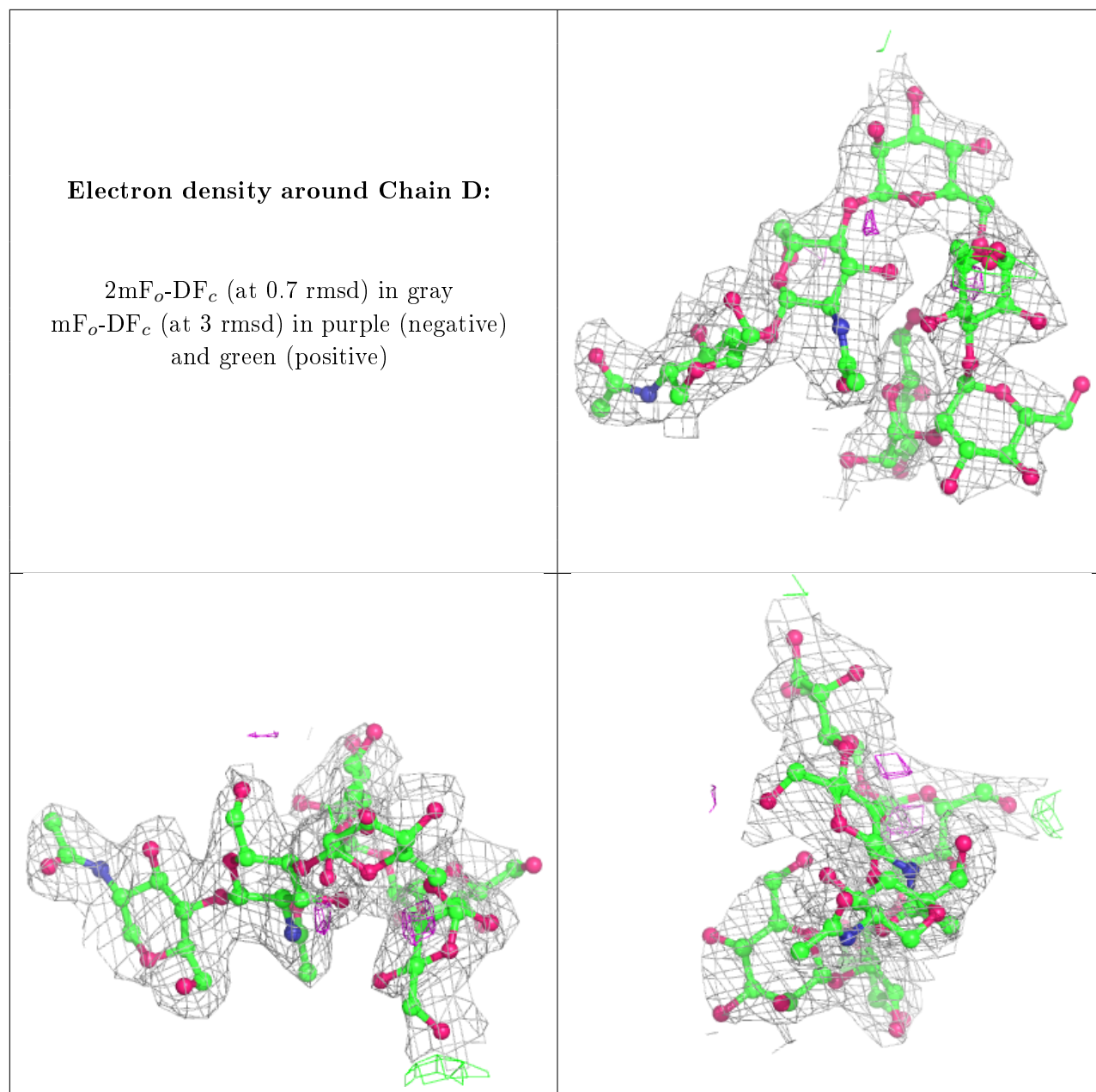
<b>Mol</b>	<b>Type</b>	<b>Chain</b>	<b>Res</b>	<b>Atoms</b>	<b>RSCC</b>	<b>RSR</b>	<b>B-factors(<math>\text{\AA}^2</math>)</b>	<b>Q&lt;0.9</b>
3	MAN	D	5	11/12	0.84	0.27	78,82,88,91	0
2	MAN	C	7	11/12	0.85	0.25	83,90,93,94	0
2	MAN	C	5	11/12	0.87	0.26	62,67,77,80	0
3	MAN	D	6	11/12	0.88	0.26	71,74,76,77	0
2	MAN	C	4	11/12	0.91	0.15	57,60,64,72	0
3	NAG	D	2	14/15	0.91	0.17	37,53,59,67	0
2	NAG	C	2	14/15	0.91	0.16	28,46,56,65	0
2	MAN	C	6	11/12	0.95	0.12	48,55,58,58	0
2	NAG	C	1	14/15	0.97	0.09	30,33,39,43	0
3	NAG	D	1	14/15	0.98	0.07	25,35,38,45	0

The following is a graphical depiction of the model fit to experimental electron density for oligosaccharide. Each fit is shown from different orientation to approximate a three-dimensional view.

**Electron density around Chain C:**

$2mF_o-DF_c$  (at 0.7 rmsd) in gray  
 $mF_o-DF_c$  (at 3 rmsd) in purple (negative)  
and green (positive)





## 6.4 Ligands [i](#)

In the following table, the Atoms column lists the number of modelled atoms in the group and the number defined in the chemical component dictionary. The B-factors column lists the minimum, median, 95<sup>th</sup> percentile and maximum values of B factors of atoms in the group. The column labelled 'Q<0.9' lists the number of atoms with occupancy less than 0.9.

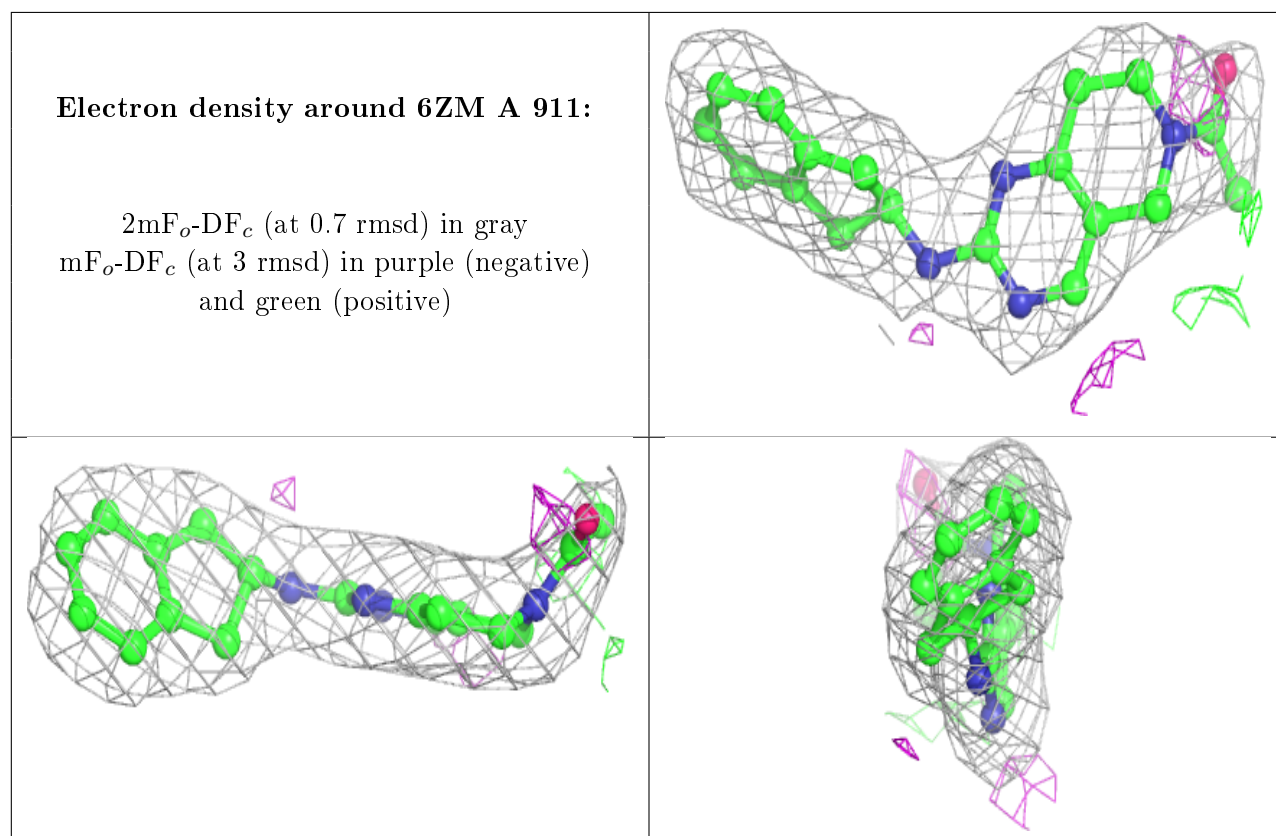
Mol	Type	Chain	Res	Atoms	RSCC	RSR	B-factors( $\text{\AA}^2$ )	Q<0.9
4	NAG	A	910	14/15	0.79	0.30	45,58,63,64	0
4	NAG	B	907	14/15	0.86	0.30	53,65,70,71	0
5	6ZM	A	911	23/23	0.96	0.10	20,33,44,50	0

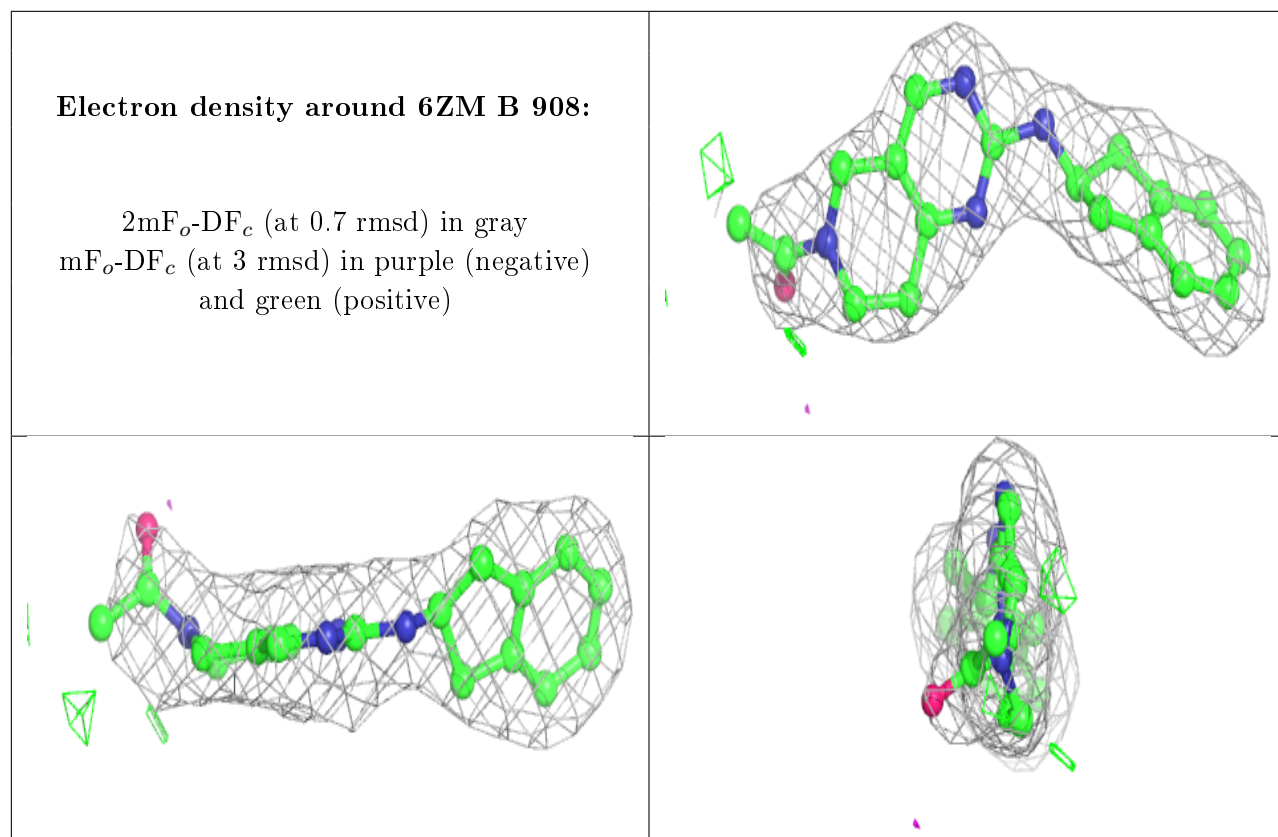
*Continued on next page...*

Continued from previous page...

Mol	Type	Chain	Res	Atoms	RSCC	RSR	B-factors( $\text{\AA}^2$ )	Q<0.9
7	CL	B	912	1/1	0.96	0.13	58,58,58,58	0
5	6ZM	B	908	23/23	0.96	0.11	29,44,65,66	0
6	ZN	B	909	1/1	0.99	0.03	59,59,59,59	0
6	ZN	B	910	1/1	0.99	0.04	55,55,55,55	0
6	ZN	A	914	1/1	0.99	0.04	53,53,53,53	0
7	CL	A	915	1/1	0.99	0.07	44,44,44,44	0
6	ZN	A	913	1/1	1.00	0.06	32,32,32,32	0
6	ZN	A	912	1/1	1.00	0.05	29,29,29,29	0
6	ZN	B	911	1/1	1.00	0.04	52,52,52,52	0

The following is a graphical depiction of the model fit to experimental electron density of all instances of the Ligand of Interest. In addition, ligands with molecular weight > 250 and outliers as shown on the geometry validation Tables will also be included. Each fit is shown from different orientation to approximate a three-dimensional view.





## 6.5 Other polymers [i](#)

There are no such residues in this entry.