



## Full wwPDB EM Validation Report ⓘ

Nov 19, 2022 – 08:08 PM EST

PDB ID : 3KTT  
EMDB ID : EMD-5148  
Title : Atomic model of bovine TRiC CCT2(beta) subunit derived from a 4.0 Angstrom cryo-EM map  
Authors : Cong, Y.; Baker, M.L.; Ludtke, S.J.; Frydman, J.; Chiu, W.  
Deposited on : 2009-11-25  
Resolution : 4.00 Å(reported)  
Based on initial model : ?

This is a Full wwPDB EM Validation Report for a publicly released PDB entry.

We welcome your comments at [validation@mail.wwpdb.org](mailto:validation@mail.wwpdb.org)

A user guide is available at

<https://www.wwpdb.org/validation/2017/EMValidationReportHelp>

with specific help available everywhere you see the ⓘ symbol.

The types of validation reports are described at

<http://www.wwpdb.org/validation/2017/FAQs#types>.

---

The following versions of software and data (see [references ⓘ](#)) were used in the production of this report:

EMDB validation analysis : 0.0.1.dev43  
MolProbity : 4.02b-467  
Percentile statistics : 20191225.v01 (using entries in the PDB archive December 25th 2019)  
MapQ : 1.9.9  
Ideal geometry (proteins) : Engh & Huber (2001)  
Ideal geometry (DNA, RNA) : Parkinson et al. (1996)  
Validation Pipeline (wwPDB-VP) : 2.31.3

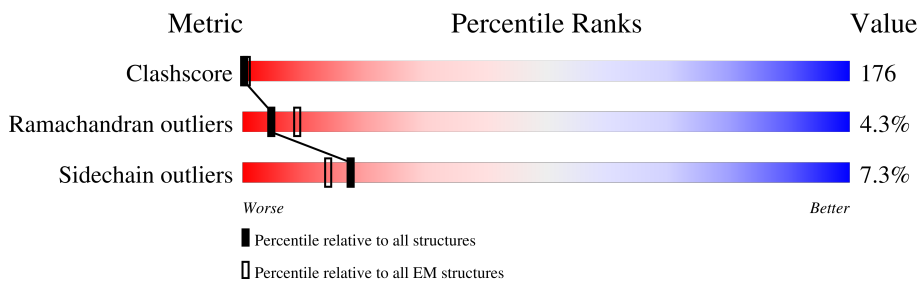
# 1 Overall quality at a glance

The following experimental techniques were used to determine the structure:

*ELECTRON MICROSCOPY*

The reported resolution of this entry is 4.00 Å.

Percentile scores (ranging between 0-100) for global validation metrics of the entry are shown in the following graphic. The table shows the number of entries on which the scores are based.



Metric	Whole archive (#Entries)	EM structures (#Entries)
Clashscore	158937	4297
Ramachandran outliers	154571	4023
Sidechain outliers	154315	3826

The table below summarises the geometric issues observed across the polymeric chains and their fit to the map. The red, orange, yellow and green segments of the bar indicate the fraction of residues that contain outliers for  $\geq 3$ , 2, 1 and 0 types of geometric quality criteria respectively. A grey segment represents the fraction of residues that are not modelled. The numeric value for each fraction is indicated below the corresponding segment, with a dot representing fractions  $\leq 5\%$ . The upper red bar (where present) indicates the fraction of residues that have poor fit to the EM map (all-atom inclusion  $< 40\%$ ). The numeric value is given above the bar.

Mol	Chain	Length	Quality of chain
1	B	513	

## 2 Entry composition [i](#)

There is only 1 type of molecule in this entry. The entry contains 3855 atoms, of which 0 are hydrogens and 0 are deuteriums.

In the tables below, the AltConf column contains the number of residues with at least one atom in alternate conformation and the Trace column contains the number of residues modelled with at most 2 atoms.

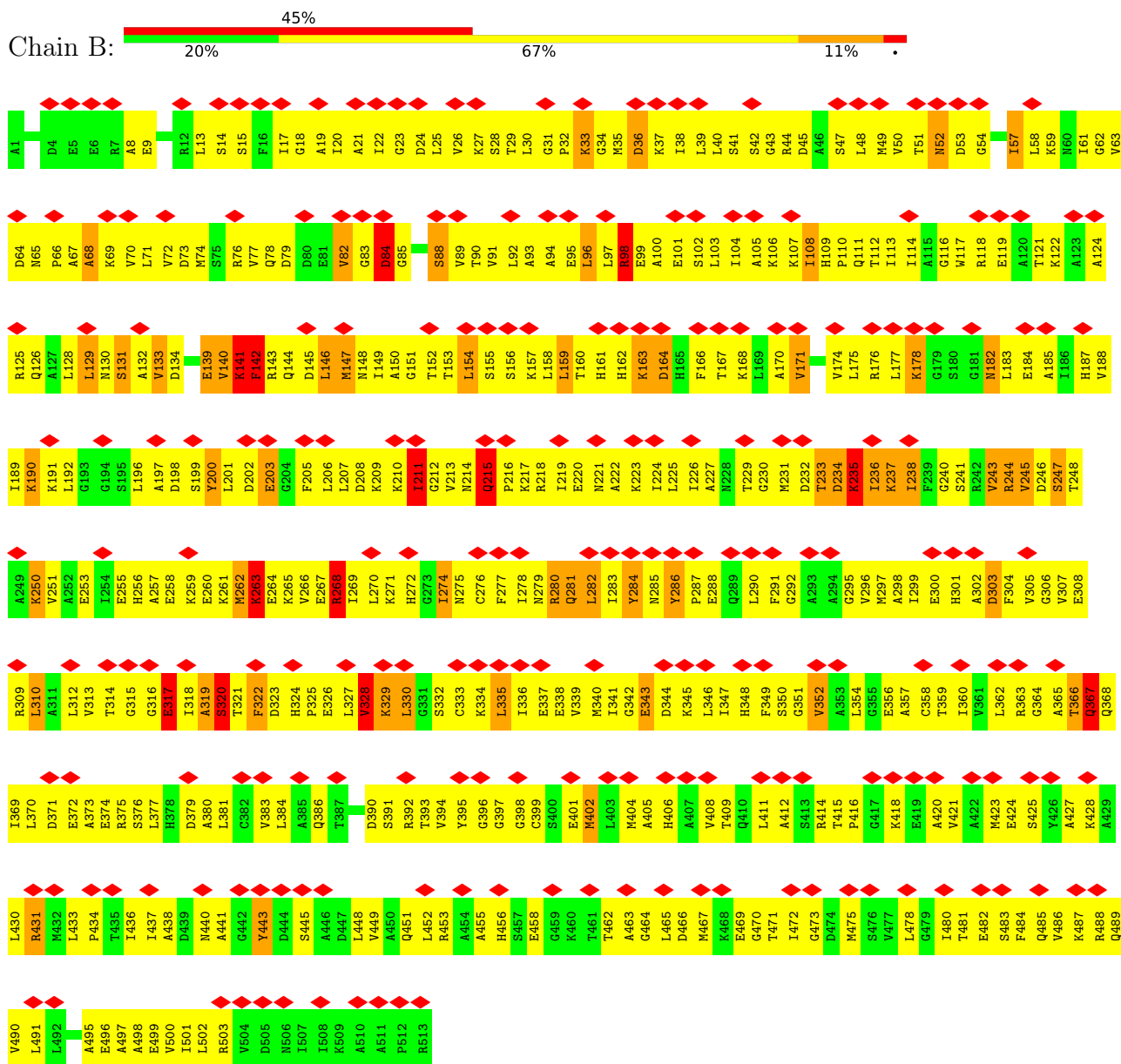
- Molecule 1 is a protein called T-complex protein 1 subunit beta.

Mol	Chain	Residues	Atoms					AltConf	Trace
			Total	C	N	O	S		
1	B	513	3855	2409	679	748	19	0	0

### 3 Residue-property plots

These plots are drawn for all protein, RNA, DNA and oligosaccharide chains in the entry. The first graphic for a chain summarises the proportions of the various outlier classes displayed in the second graphic. The second graphic shows the sequence view annotated by issues in geometry and atom inclusion in map density. Residues are color-coded according to the number of geometric quality criteria for which they contain at least one outlier: green = 0, yellow = 1, orange = 2 and red = 3 or more. A red diamond above a residue indicates a poor fit to the EM map for this residue (all-atom inclusion < 40%). Stretches of 2 or more consecutive residues without any outlier are shown as a green connector. Residues present in the sample, but not in the model, are shown in grey.

- Molecule 1: T-complex protein 1 subunit beta



## 4 Experimental information

Property	Value	Source
EM reconstruction method	SINGLE PARTICLE	Depositor
Imposed symmetry	POINT, C2	Depositor
Number of particles used	101000	Depositor
Resolution determination method	Not provided	
CTF correction method	FSC at 0.5 cut-off	Depositor
Microscope	JEOL 3200FSC	Depositor
Voltage (kV)	300	Depositor
Electron dose ( $e^-/\text{\AA}^2$ )	18	Depositor
Minimum defocus (nm)	1000	Depositor
Maximum defocus (nm)	3000	Depositor
Magnification	50000	Depositor
Image detector	KODAK SO-163 FILM	Depositor
Maximum map value	7.456	Depositor
Minimum map value	-3.019	Depositor
Average map value	0.055	Depositor
Map value standard deviation	0.377	Depositor
Recommended contour level	1.5	Depositor
Map size ( $\text{\AA}$ )	307.2, 307.2, 153.6	wwPDB
Map dimensions	256, 256, 128	wwPDB
Map angles ( $^\circ$ )	90.0, 90.0, 90.0	wwPDB
Pixel spacing ( $\text{\AA}$ )	1.2, 1.2, 1.2	Depositor

## 5 Model quality i

### 5.1 Standard geometry i

The Z score for a bond length (or angle) is the number of standard deviations the observed value is removed from the expected value. A bond length (or angle) with  $|Z| > 5$  is considered an outlier worth inspection. RMSZ is the root-mean-square of all Z scores of the bond lengths (or angles).

Mol	Chain	Bond lengths		Bond angles	
		RMSZ	# Z  >5	RMSZ	# Z  >5
1	B	0.96	2/3896 (0.1%)	1.34	40/5249 (0.8%)

Chiral center outliers are detected by calculating the chiral volume of a chiral center and verifying if the center is modelled as a planar moiety or with the opposite hand. A planarity outlier is detected by checking planarity of atoms in a peptide group, atoms in a mainchain group or atoms of a sidechain that are expected to be planar.

Mol	Chain	#Chirality outliers	#Planarity outliers
1	B	2	0

All (2) bond length outliers are listed below:

Mol	Chain	Res	Type	Atoms	Z	Observed(Å)	Ideal(Å)
1	B	260	GLU	CA-CB	-7.71	1.36	1.53
1	B	233	THR	C-N	7.42	1.51	1.34

All (40) bond angle outliers are listed below:

Mol	Chain	Res	Type	Atoms	Z	Observed(°)	Ideal(°)
1	B	268	ARG	CB-CA-C	11.45	133.31	110.40
1	B	235	LYS	N-CA-C	9.62	136.96	111.00
1	B	211	ILE	CB-CA-C	-9.30	93.01	111.60
1	B	263	LYS	N-CA-CB	8.74	126.33	110.60
1	B	132	ALA	C-N-CA	8.70	143.46	121.70
1	B	317	GLU	CB-CA-C	-8.36	93.68	110.40
1	B	233	THR	O-C-N	7.52	134.73	122.70
1	B	263	LYS	CD-CE-NZ	7.19	128.23	111.70
1	B	133	VAL	N-CA-CB	-7.13	95.81	111.50
1	B	263	LYS	CB-CA-C	6.55	123.51	110.40
1	B	320	SER	N-CA-CB	6.45	120.17	110.50
1	B	233	THR	CA-C-N	-6.36	103.21	117.20
1	B	237	LYS	C-N-CA	6.30	137.46	121.70
1	B	52	ASN	CA-CB-CG	-6.27	99.60	113.40

*Continued on next page...*

Continued from previous page...

Mol	Chain	Res	Type	Atoms	Z	Observed(°)	Ideal(°)
1	B	98	ARG	CD-NE-CZ	-6.23	114.88	123.60
1	B	328	VAL	CG1-CB-CG2	6.02	120.53	110.90
1	B	84	ASP	CB-CA-C	5.92	122.23	110.40
1	B	245	VAL	N-CA-C	5.72	126.46	111.00
1	B	171	VAL	CA-CB-CG1	-5.70	102.35	110.90
1	B	147	MET	CG-SD-CE	-5.67	91.13	100.20
1	B	237	LYS	CA-C-N	-5.66	104.76	117.20
1	B	142	PHE	CB-CA-C	-5.63	99.15	110.40
1	B	237	LYS	O-C-N	5.61	131.67	122.70
1	B	329	LYS	CB-CA-C	-5.54	99.33	110.40
1	B	163	LYS	N-CA-CB	5.40	120.31	110.60
1	B	319	ALA	N-CA-CB	5.38	117.64	110.10
1	B	443	TYR	CA-CB-CG	-5.38	103.17	113.40
1	B	367	GLN	N-CA-CB	5.38	120.27	110.60
1	B	215	GLN	N-CA-CB	5.32	120.18	110.60
1	B	322	PHE	CA-CB-CG	-5.29	101.20	113.90
1	B	284	TYR	C-N-CA	5.26	134.86	121.70
1	B	243	VAL	N-CA-C	5.24	125.16	111.00
1	B	237	LYS	CB-CG-CD	5.23	125.20	111.60
1	B	200	TYR	CA-CB-CG	-5.23	103.46	113.40
1	B	379	ASP	CB-CA-C	-5.22	99.96	110.40
1	B	260	GLU	CB-CA-C	5.15	120.70	110.40
1	B	154	LEU	CB-CA-C	-5.14	100.44	110.20
1	B	262	MET	CG-SD-CE	-5.11	92.03	100.20
1	B	286	TYR	CA-CB-CG	-5.10	103.71	113.40
1	B	62	GLY	N-CA-C	-5.01	100.58	113.10

All (2) chirality outliers are listed below:

Mol	Chain	Res	Type	Atom
1	B	263	LYS	CA
1	B	268	ARG	CA

There are no planarity outliers.

## 5.2 Too-close contacts

In the following table, the Non-H and H(model) columns list the number of non-hydrogen atoms and hydrogen atoms in the chain respectively. The H(added) column lists the number of hydrogen atoms added and optimized by MolProbity. The Clashes column lists the number of clashes within the asymmetric unit, whereas Symm-Clashes lists symmetry-related clashes.

Mol	Chain	Non-H	H(model)	H(added)	Clashes	Symm-Clashes
1	B	3855	0	3970	1378	0
All	All	3855	0	3970	1378	0

The all-atom clashscore is defined as the number of clashes found per 1000 atoms (including hydrogen atoms). The all-atom clashscore for this structure is 176.

All (1378) close contacts within the same asymmetric unit are listed below, sorted by their clash magnitude.

Atom-1	Atom-2	Interatomic distance (Å)	Clash overlap (Å)
1:B:244:ARG:HD3	1:B:245:VAL:N	1.26	1.47
1:B:237:LYS:C	1:B:238:ILE:HD12	1.50	1.29
1:B:237:LYS:O	1:B:238:ILE:HD12	1.32	1.28
1:B:244:ARG:NH1	1:B:245:VAL:O	1.65	1.26
1:B:241:SER:O	1:B:243:VAL:HG23	1.37	1.19
1:B:245:VAL:HG11	1:B:250:LYS:CB	1.71	1.18
1:B:215:GLN:HG3	1:B:292:GLY:HA2	1.24	1.18
1:B:448:LEU:HD21	1:B:465:LEU:HD12	1.17	1.16
1:B:250:LYS:HE2	1:B:250:LYS:HA	1.25	1.16
1:B:244:ARG:NH1	1:B:245:VAL:C	2.01	1.14
1:B:211:ILE:HG23	1:B:298:ALA:HB3	1.29	1.14
1:B:452:LEU:HD22	1:B:465:LEU:HD11	1.26	1.13
1:B:235:LYS:O	1:B:236:ILE:HG22	1.47	1.13
1:B:146:LEU:HD13	1:B:168:LYS:HA	1.22	1.11
1:B:354:LEU:HG	1:B:356:GLU:H	1.14	1.10
1:B:354:LEU:HD21	1:B:356:GLU:HB3	1.28	1.09
1:B:40:LEU:HB2	1:B:48:LEU:HG	1.20	1.09
1:B:245:VAL:CG1	1:B:250:LYS:HB3	1.83	1.08
1:B:140:VAL:HG22	1:B:175:LEU:HD22	1.24	1.08
1:B:219:ILE:HD11	1:B:336:ILE:HD12	1.33	1.08
1:B:159:LEU:HB2	1:B:163:LYS:HB2	1.35	1.08
1:B:285:ASN:HA	1:B:288:GLU:HG2	1.17	1.08
1:B:58:LEU:HB3	1:B:72:VAL:HG13	1.31	1.08
1:B:114:ILE:CD1	1:B:502:LEU:HD13	1.83	1.08
1:B:231:MET:HB2	1:B:284:TYR:H	1.12	1.07
1:B:92:LEU:HG	1:B:433:LEU:HD11	1.37	1.07
1:B:233:THR:HG21	1:B:261:LYS:HE2	1.12	1.07
1:B:133:VAL:HB	1:B:393:THR:H	1.15	1.07
1:B:52:ASN:H	1:B:375:ARG:HD2	1.12	1.05
1:B:206:LEU:HD11	1:B:346:LEU:HD23	1.09	1.05
1:B:269:ILE:HG12	1:B:274:ILE:HG21	1.36	1.05
1:B:141:LYS:HG2	1:B:144:GLN:HB2	1.32	1.05
1:B:244:ARG:CZ	1:B:245:VAL:O	2.04	1.05

*Continued on next page...*



*Continued from previous page...*

Atom-1	Atom-2	Interatomic distance (Å)	Clash overlap (Å)
1:B:38:ILE:HD13	1:B:48:LEU:HD23	1.05	1.04
1:B:221:ASN:HA	1:B:333:CYS:HB2	1.35	1.04
1:B:218:ARG:HG3	1:B:337:GLU:HB3	1.35	1.04
1:B:141:LYS:HD3	1:B:144:GLN:HG2	1.36	1.03
1:B:218:ARG:HD3	1:B:335:LEU:HD11	1.37	1.03
1:B:211:ILE:HD11	1:B:297:MET:HG3	1.40	1.03
1:B:262:MET:HE2	1:B:286:TYR:HB3	1.36	1.03
1:B:146:LEU:HB2	1:B:171:VAL:HG21	1.38	1.02
1:B:141:LYS:HE3	1:B:142:PHE:N	1.74	1.02
1:B:233:THR:HG22	1:B:234:ASP:N	1.71	1.01
1:B:244:ARG:CD	1:B:245:VAL:N	2.22	1.01
1:B:190:LYS:HA	1:B:362:LEU:HB2	1.39	1.01
1:B:317:GLU:CB	1:B:329:LYS:HA	1.92	0.99
1:B:367:GLN:HG2	1:B:369:ILE:H	1.26	0.99
1:B:317:GLU:HB3	1:B:329:LYS:HD3	1.45	0.99
1:B:317:GLU:CA	1:B:329:LYS:HA	1.92	0.99
1:B:266:VAL:HB	1:B:290:LEU:HD21	1.45	0.98
1:B:114:ILE:HA	1:B:117:TRP:CZ3	1.98	0.98
1:B:232:ASP:HA	1:B:284:TYR:HB2	1.42	0.96
1:B:92:LEU:HD21	1:B:433:LEU:HD21	1.45	0.96
1:B:395:TYR:CE1	1:B:462:THR:HG22	2.00	0.96
1:B:319:ALA:HA	1:B:320:SER:HB2	1.46	0.95
1:B:319:ALA:HB2	1:B:329:LYS:HE3	1.48	0.95
1:B:245:VAL:CG1	1:B:250:LYS:CB	2.41	0.95
1:B:58:LEU:HB3	1:B:72:VAL:CG1	1.96	0.95
1:B:297:MET:HE1	1:B:347:ILE:HD11	1.49	0.95
1:B:146:LEU:HD13	1:B:168:LYS:CA	1.97	0.94
1:B:188:VAL:HG21	1:B:377:LEU:HD22	1.46	0.94
1:B:372:GLU:HB2	1:B:375:ARG:HH21	1.31	0.94
1:B:163:LYS:HA	1:B:166:PHE:CD1	2.01	0.94
1:B:211:ILE:HG23	1:B:298:ALA:CB	1.98	0.94
1:B:269:ILE:HG12	1:B:274:ILE:CG2	1.97	0.94
1:B:319:ALA:HB2	1:B:329:LYS:CE	1.98	0.94
1:B:313:VAL:HA	1:B:354:LEU:HD22	1.48	0.93
1:B:100:ALA:HA	1:B:103:LEU:HD13	1.49	0.93
1:B:109:HIS:CE1	1:B:111:GLN:HB2	2.04	0.93
1:B:57:ILE:HG23	1:B:58:LEU:HD22	1.49	0.93
1:B:140:VAL:HG22	1:B:175:LEU:CD2	1.98	0.93
1:B:59:LYS:HE2	1:B:76:ARG:HB2	1.48	0.93
1:B:343:GLU:HG3	1:B:344:ASP:H	1.31	0.93
1:B:324:HIS:HA	1:B:328:VAL:HG21	1.50	0.93

*Continued on next page...*

*Continued from previous page...*

Atom-1	Atom-2	Interatomic distance (Å)	Clash overlap (Å)
1:B:285:ASN:CA	1:B:288:GLU:HG2	1.99	0.92
1:B:401:GLU:HG2	1:B:433:LEU:HD22	1.49	0.92
1:B:38:ILE:HD13	1:B:48:LEU:CD2	1.99	0.92
1:B:244:ARG:HD3	1:B:244:ARG:C	1.90	0.92
1:B:244:ARG:HD3	1:B:245:VAL:H	1.26	0.92
1:B:268:ARG:HB3	1:B:271:LYS:HD3	1.50	0.92
1:B:114:ILE:HD11	1:B:502:LEU:HD22	1.50	0.92
1:B:133:VAL:HB	1:B:393:THR:N	1.84	0.92
1:B:40:LEU:HB2	1:B:48:LEU:CG	1.99	0.92
1:B:215:GLN:HG3	1:B:292:GLY:CA	1.99	0.92
1:B:233:THR:CG2	1:B:234:ASP:N	2.32	0.91
1:B:146:LEU:HB2	1:B:171:VAL:CG2	2.01	0.91
1:B:233:THR:CG2	1:B:261:LYS:HE2	2.00	0.91
1:B:211:ILE:CD1	1:B:297:MET:HG3	2.00	0.91
1:B:218:ARG:CD	1:B:335:LEU:HD11	2.00	0.91
1:B:219:ILE:CG1	1:B:336:ILE:HB	2.00	0.91
1:B:268:ARG:HB3	1:B:271:LYS:CD	2.01	0.91
1:B:334:LYS:CB	1:B:351:GLY:HA3	2.01	0.90
1:B:174:VAL:HG11	1:B:384:LEU:HB3	1.52	0.90
1:B:438:ALA:HB2	1:B:448:LEU:HG	1.52	0.90
1:B:33:LYS:HD2	1:B:467:MET:SD	2.11	0.90
1:B:297:MET:CE	1:B:347:ILE:HD11	2.00	0.90
1:B:154:LEU:HD21	1:B:163:LYS:HG3	1.53	0.90
1:B:217:LYS:HE2	1:B:217:LYS:HA	1.52	0.90
1:B:160:THR:HG23	1:B:164:ASP:N	1.87	0.90
1:B:219:ILE:HD11	1:B:336:ILE:CD1	2.02	0.90
1:B:92:LEU:CG	1:B:433:LEU:HD11	2.01	0.90
1:B:245:VAL:HG11	1:B:250:LYS:HB3	0.94	0.90
1:B:176:ARG:CZ	1:B:358:CYS:HB2	2.02	0.90
1:B:231:MET:CG	1:B:283:ILE:HG13	2.02	0.90
1:B:110:PRO:HA	1:B:113:ILE:HD12	1.54	0.89
1:B:114:ILE:HD11	1:B:502:LEU:HD13	1.53	0.89
1:B:230:GLY:HA2	1:B:279:ASN:HD21	1.34	0.89
1:B:411:LEU:HB3	1:B:423:MET:SD	2.13	0.89
1:B:225:LEU:HD22	1:B:329:LYS:CD	2.03	0.89
1:B:232:ASP:CA	1:B:284:TYR:HB2	2.01	0.89
1:B:243:VAL:HG12	1:B:244:ARG:N	1.87	0.89
1:B:141:LYS:HE3	1:B:142:PHE:H	1.34	0.89
1:B:154:LEU:CD2	1:B:163:LYS:HG3	2.02	0.89
1:B:487:LYS:HE2	1:B:487:LYS:HA	1.55	0.89
1:B:190:LYS:CA	1:B:362:LEU:HB2	2.01	0.89

*Continued on next page...*

*Continued from previous page...*

Atom-1	Atom-2	Interatomic distance (Å)	Clash overlap (Å)
1:B:114:ILE:HD11	1:B:502:LEU:CD2	2.01	0.88
1:B:43:GLY:HA2	1:B:45:ASP:H	1.38	0.88
1:B:51:THR:HA	1:B:375:ARG:HD3	1.55	0.88
1:B:114:ILE:HD11	1:B:502:LEU:CD1	2.03	0.88
1:B:233:THR:HG21	1:B:261:LYS:CE	2.01	0.88
1:B:367:GLN:HG2	1:B:369:ILE:N	1.87	0.88
1:B:265:LYS:HD3	1:B:287:PRO:HG3	1.56	0.88
1:B:427:ALA:HA	1:B:430:LEU:HD23	1.56	0.88
1:B:106:LYS:HE3	1:B:418:LYS:HE2	1.56	0.88
1:B:117:TRP:HD1	1:B:495:ALA:HB1	1.38	0.88
1:B:240:GLY:HA2	1:B:241:SER:OG	1.74	0.88
1:B:206:LEU:HD23	1:B:348:HIS:CD2	2.09	0.88
1:B:502:LEU:HD23	1:B:502:LEU:O	1.74	0.88
1:B:190:LYS:CB	1:B:362:LEU:HB2	2.03	0.87
1:B:82:VAL:HG13	1:B:83:GLY:H	1.39	0.87
1:B:96:LEU:HD13	1:B:97:LEU:HD12	1.53	0.87
1:B:262:MET:CE	1:B:286:TYR:HB3	2.03	0.87
1:B:438:ALA:CB	1:B:448:LEU:HG	2.03	0.87
1:B:475:MET:SD	1:B:480:ILE:HB	2.14	0.87
1:B:317:GLU:HA	1:B:329:LYS:HA	1.53	0.87
1:B:52:ASN:N	1:B:375:ARG:HD2	1.88	0.87
1:B:61:ILE:HG12	1:B:63:VAL:HG22	1.53	0.87
1:B:394:VAL:CG2	1:B:482:GLU:HB2	2.04	0.87
1:B:163:LYS:HA	1:B:166:PHE:HD1	1.37	0.86
1:B:128:LEU:CD2	1:B:488:ARG:HG2	2.04	0.86
1:B:230:GLY:HA2	1:B:279:ASN:ND2	1.90	0.86
1:B:258:GLU:HA	1:B:261:LYS:HD3	1.54	0.86
1:B:216:PRO:HG2	1:B:295:GLY:HA2	1.57	0.86
1:B:282:LEU:HD22	1:B:282:LEU:H	1.41	0.86
1:B:211:ILE:H	1:B:211:ILE:HD12	1.41	0.86
1:B:448:LEU:HD11	1:B:465:LEU:HD11	1.56	0.86
1:B:141:LYS:HG2	1:B:144:GLN:CB	2.06	0.86
1:B:237:LYS:O	1:B:238:ILE:CD1	2.21	0.86
1:B:190:LYS:CE	1:B:370:LEU:HG	2.06	0.85
1:B:243:VAL:CG1	1:B:244:ARG:H	1.89	0.85
1:B:266:VAL:CB	1:B:290:LEU:HD21	2.05	0.85
1:B:399:CYS:HA	1:B:456:HIS:NE2	1.90	0.85
1:B:437:ILE:HA	1:B:440:ASN:HD21	1.39	0.85
1:B:122:LYS:HD2	1:B:125:ARG:HD3	1.57	0.85
1:B:274:ILE:HG23	1:B:296:VAL:HG21	1.58	0.85
1:B:96:LEU:HD13	1:B:97:LEU:N	1.92	0.85

*Continued on next page...*

*Continued from previous page...*

Atom-1	Atom-2	Interatomic distance (Å)	Clash overlap (Å)
1:B:243:VAL:CG1	1:B:244:ARG:N	2.39	0.85
1:B:274:ILE:HG23	1:B:296:VAL:CG2	2.07	0.85
1:B:23:GLY:HA2	1:B:26:VAL:HG22	1.59	0.85
1:B:94:ALA:HA	1:B:97:LEU:HD13	1.58	0.84
1:B:221:ASN:CA	1:B:333:CYS:HB2	2.07	0.84
1:B:78:GLN:NE2	1:B:489:GLN:HB2	1.92	0.84
1:B:231:MET:HB2	1:B:283:ILE:HG13	1.60	0.84
1:B:74:MET:O	1:B:77:VAL:HG12	1.77	0.84
1:B:176:ARG:HH12	1:B:201:LEU:HD21	1.39	0.84
1:B:402:MET:HB3	1:B:456:HIS:CD2	2.11	0.84
1:B:211:ILE:CG1	1:B:297:MET:HG3	2.06	0.84
1:B:79:ASP:OD1	1:B:83:GLY:HA2	1.77	0.84
1:B:280:ARG:HD2	1:B:304:PHE:HB2	1.58	0.84
1:B:159:LEU:CB	1:B:163:LYS:HB2	2.07	0.83
1:B:315:GLY:C	1:B:330:LEU:HB2	1.98	0.83
1:B:431:ARG:HH21	1:B:434:PRO:HG2	1.43	0.83
1:B:134:ASP:OD1	1:B:392:ARG:HA	1.78	0.83
1:B:235:LYS:NZ	1:B:235:LYS:HB3	1.94	0.83
1:B:146:LEU:HD21	1:B:150:ALA:HB3	1.60	0.83
1:B:334:LYS:HB3	1:B:350:SER:O	1.78	0.83
1:B:314:THR:HG23	1:B:316:GLY:N	1.94	0.83
1:B:13:LEU:O	1:B:13:LEU:HD23	1.78	0.83
1:B:51:THR:HA	1:B:375:ARG:CD	2.07	0.83
1:B:114:ILE:HD13	1:B:502:LEU:HD13	1.60	0.83
1:B:231:MET:HE3	1:B:287:PRO:HG2	1.60	0.83
1:B:101:GLU:O	1:B:104:ILE:HG12	1.79	0.83
1:B:114:ILE:HA	1:B:117:TRP:HZ3	1.41	0.83
1:B:158:LEU:HB3	1:B:372:GLU:OE2	1.79	0.83
1:B:406:HIS:O	1:B:409:THR:HG22	1.78	0.83
1:B:154:LEU:CD2	1:B:167:THR:HB	2.08	0.82
1:B:334:LYS:HG3	1:B:351:GLY:HA3	1.60	0.82
1:B:448:LEU:CD2	1:B:465:LEU:HD12	2.05	0.82
1:B:159:LEU:HD23	1:B:163:LYS:CB	2.10	0.82
1:B:314:THR:HG23	1:B:316:GLY:H	1.43	0.82
1:B:141:LYS:HD3	1:B:144:GLN:CG	2.09	0.82
1:B:190:LYS:HB3	1:B:362:LEU:HB2	1.60	0.82
1:B:209:LYS:HE2	1:B:301:HIS:O	1.79	0.82
1:B:258:GLU:HA	1:B:261:LYS:CD	2.08	0.82
1:B:96:LEU:CD1	1:B:97:LEU:HD12	2.09	0.82
1:B:259:LYS:N	1:B:259:LYS:HE2	1.94	0.82
1:B:341:ILE:O	1:B:343:GLU:HB3	1.79	0.82

*Continued on next page...*

*Continued from previous page...*

Atom-1	Atom-2	Interatomic distance (Å)	Clash overlap (Å)
1:B:497:ALA:O	1:B:500:VAL:HG22	1.78	0.82
1:B:124:ALA:O	1:B:128:LEU:HG	1.79	0.82
1:B:146:LEU:HG	1:B:171:VAL:HG11	1.61	0.82
1:B:163:LYS:HD2	1:B:166:PHE:HB2	1.61	0.82
1:B:268:ARG:O	1:B:271:LYS:HG2	1.80	0.82
1:B:188:VAL:CG2	1:B:377:LEU:HD22	2.10	0.82
1:B:145:ASP:OD1	1:B:171:VAL:HB	1.80	0.81
1:B:206:LEU:HD11	1:B:346:LEU:CD2	2.02	0.81
1:B:312:LEU:HD11	1:B:356:GLU:CG	2.09	0.81
1:B:160:THR:CA	1:B:163:LYS:HB3	2.10	0.81
1:B:207:LEU:HD13	1:B:208:ASP:N	1.96	0.81
1:B:342:GLY:HA3	1:B:343:GLU:CB	2.10	0.81
1:B:502:LEU:HD23	1:B:502:LEU:C	2.00	0.81
1:B:79:ASP:HA	1:B:83:GLY:CA	2.09	0.81
1:B:160:THR:HA	1:B:163:LYS:HB3	1.63	0.81
1:B:313:VAL:HA	1:B:354:LEU:CD2	2.10	0.81
1:B:141:LYS:CE	1:B:142:PHE:HB2	2.11	0.81
1:B:38:ILE:CD1	1:B:48:LEU:HD23	2.01	0.81
1:B:233:THR:CG2	1:B:234:ASP:H	1.93	0.81
1:B:225:LEU:HD22	1:B:329:LYS:CG	2.10	0.81
1:B:52:ASN:CG	1:B:157:LYS:HD3	2.01	0.80
1:B:210:LYS:CE	1:B:213:VAL:HA	2.11	0.80
1:B:231:MET:HB2	1:B:284:TYR:N	1.94	0.80
1:B:171:VAL:O	1:B:174:VAL:HG22	1.80	0.80
1:B:231:MET:HB3	1:B:265:LYS:HZ3	1.45	0.80
1:B:237:LYS:O	1:B:237:LYS:CD	2.29	0.80
1:B:323:ASP:O	1:B:328:VAL:HG11	1.82	0.80
1:B:23:GLY:HA2	1:B:26:VAL:CG2	2.12	0.80
1:B:52:ASN:CG	1:B:157:LYS:HA	2.02	0.80
1:B:285:ASN:HA	1:B:288:GLU:CG	2.08	0.80
1:B:38:ILE:HG22	1:B:50:VAL:HB	1.63	0.79
1:B:54:GLY:O	1:B:58:LEU:HD23	1.82	0.79
1:B:82:VAL:HA	1:B:386:GLN:HG3	1.63	0.79
1:B:225:LEU:HD22	1:B:329:LYS:HG3	1.64	0.79
1:B:52:ASN:OD1	1:B:157:LYS:HD3	1.81	0.79
1:B:95:GLU:HA	1:B:98:ARG:HD3	1.65	0.79
1:B:225:LEU:HA	1:B:329:LYS:HD2	1.62	0.79
1:B:32:PRO:C	1:B:33:LYS:HE3	2.01	0.79
1:B:269:ILE:HG12	1:B:274:ILE:CB	2.12	0.79
1:B:223:LYS:HG2	1:B:272:HIS:CD2	2.17	0.79
1:B:244:ARG:HH11	1:B:245:VAL:C	1.83	0.79

*Continued on next page...*

*Continued from previous page...*

Atom-1	Atom-2	Interatomic distance (Å)	Clash overlap (Å)
1:B:312:LEU:HD11	1:B:356:GLU:HG2	1.64	0.79
1:B:43:GLY:HA2	1:B:45:ASP:N	1.97	0.79
1:B:250:LYS:O	1:B:253:GLU:HG2	1.82	0.79
1:B:149:ILE:O	1:B:152:THR:HG22	1.83	0.79
1:B:33:LYS:HG2	1:B:441:ALA:HA	1.63	0.79
1:B:95:GLU:HA	1:B:98:ARG:CD	2.12	0.79
1:B:380:ALA:O	1:B:384:LEU:HD23	1.82	0.79
1:B:26:VAL:CG2	1:B:91:VAL:HG22	2.13	0.79
1:B:147:MET:HE1	1:B:168:LYS:HE3	1.65	0.79
1:B:223:LYS:HB3	1:B:272:HIS:CE1	2.18	0.79
1:B:324:HIS:O	1:B:329:LYS:HG2	1.81	0.79
1:B:354:LEU:CD2	1:B:356:GLU:HB3	2.11	0.79
1:B:157:LYS:HB2	1:B:159:LEU:HD21	1.66	0.78
1:B:219:ILE:CD1	1:B:336:ILE:HD12	2.13	0.78
1:B:411:LEU:HB3	1:B:423:MET:CE	2.12	0.78
1:B:448:LEU:HD11	1:B:465:LEU:CD1	2.13	0.78
1:B:146:LEU:HD21	1:B:150:ALA:CB	2.13	0.78
1:B:33:LYS:HB2	1:B:440:ASN:OD1	1.83	0.78
1:B:52:ASN:ND2	1:B:157:LYS:HA	1.98	0.78
1:B:237:LYS:O	1:B:237:LYS:HD3	1.82	0.78
1:B:96:LEU:O	1:B:96:LEU:HD22	1.84	0.78
1:B:119:GLU:OE2	1:B:415:THR:HG21	1.83	0.78
1:B:231:MET:CB	1:B:284:TYR:H	1.95	0.78
1:B:89:VAL:HB	1:B:490:VAL:HG23	1.64	0.78
1:B:466:ASP:HB3	1:B:469:GLU:HB3	1.66	0.78
1:B:100:ALA:CA	1:B:103:LEU:HD13	2.13	0.78
1:B:154:LEU:HD11	1:B:163:LYS:HZ2	1.46	0.78
1:B:334:LYS:CG	1:B:351:GLY:HA3	2.12	0.78
1:B:83:GLY:HA3	1:B:84:ASP:OD1	1.82	0.78
1:B:92:LEU:O	1:B:95:GLU:HG2	1.84	0.77
1:B:114:ILE:HD13	1:B:117:TRP:CZ3	2.19	0.77
1:B:177:LEU:HD13	1:B:177:LEU:O	1.84	0.77
1:B:231:MET:CB	1:B:283:ILE:HG13	2.13	0.77
1:B:408:VAL:HG23	1:B:427:ALA:HB1	1.65	0.77
1:B:106:LYS:CE	1:B:108:ILE:HD12	2.13	0.77
1:B:114:ILE:HG23	1:B:117:TRP:CE3	2.19	0.77
1:B:159:LEU:HD23	1:B:163:LYS:HB3	1.65	0.77
1:B:196:LEU:O	1:B:196:LEU:HD13	1.85	0.77
1:B:206:LEU:CD1	1:B:346:LEU:HD23	2.03	0.77
1:B:216:PRO:HG2	1:B:295:GLY:CA	2.13	0.77
1:B:319:ALA:HA	1:B:320:SER:CB	2.14	0.77

*Continued on next page...*

*Continued from previous page...*

Atom-1	Atom-2	Interatomic distance (Å)	Clash overlap (Å)
1:B:38:ILE:O	1:B:38:ILE:HD12	1.84	0.77
1:B:185:ALA:HB1	1:B:357:ALA:HB2	1.65	0.77
1:B:237:LYS:C	1:B:238:ILE:CD1	2.44	0.77
1:B:236:ILE:CG2	1:B:238:ILE:O	2.32	0.77
1:B:401:GLU:CG	1:B:433:LEU:HD22	2.15	0.77
1:B:133:VAL:HG23	1:B:134:ASP:H	1.50	0.77
1:B:150:ALA:O	1:B:154:LEU:HD13	1.84	0.77
1:B:318:ILE:HG22	1:B:320:SER:OG	1.85	0.77
1:B:124:ALA:HA	1:B:491:LEU:HD13	1.66	0.76
1:B:452:LEU:HD22	1:B:465:LEU:CD1	2.11	0.76
1:B:452:LEU:HD13	1:B:465:LEU:HD13	1.66	0.76
1:B:411:LEU:HD13	1:B:423:MET:CE	2.15	0.76
1:B:84:ASP:CG	1:B:85:GLY:HA2	2.05	0.76
1:B:238:ILE:HD12	1:B:238:ILE:N	1.99	0.76
1:B:13:LEU:HD23	1:B:13:LEU:C	2.06	0.76
1:B:282:LEU:HD13	1:B:300:GLU:OE2	1.85	0.76
1:B:500:VAL:HA	1:B:503:ARG:HG2	1.66	0.76
1:B:402:MET:HE2	1:B:402:MET:HA	1.67	0.76
1:B:248:THR:O	1:B:251:VAL:HG12	1.84	0.76
1:B:95:GLU:O	1:B:98:ARG:HD2	1.85	0.76
1:B:19:ALA:CB	1:B:97:LEU:HD22	2.16	0.76
1:B:57:ILE:HD13	1:B:57:ILE:O	1.86	0.75
1:B:117:TRP:CE2	1:B:499:GLU:HG3	2.21	0.75
1:B:312:LEU:CD1	1:B:354:LEU:HD21	2.16	0.75
1:B:317:GLU:HB3	1:B:329:LYS:HA	1.68	0.75
1:B:313:VAL:HG13	1:B:352:VAL:HG21	1.68	0.75
1:B:19:ALA:HB1	1:B:94:ALA:CB	2.17	0.75
1:B:50:VAL:HG13	1:B:375:ARG:NH2	2.00	0.75
1:B:114:ILE:CD1	1:B:502:LEU:CD1	2.61	0.75
1:B:369:ILE:HG23	1:B:372:GLU:OE1	1.86	0.75
1:B:166:PHE:CZ	1:B:198:ASP:HB3	2.21	0.75
1:B:168:LYS:O	1:B:171:VAL:HG22	1.86	0.75
1:B:235:LYS:O	1:B:236:ILE:CG2	2.30	0.75
1:B:49:MET:HA	1:B:368:GLN:NE2	2.02	0.75
1:B:92:LEU:HD21	1:B:433:LEU:CD2	2.15	0.75
1:B:209:LYS:HD2	1:B:299:ILE:HG23	1.68	0.75
1:B:319:ALA:HB2	1:B:329:LYS:NZ	2.01	0.75
1:B:175:LEU:O	1:B:178:LYS:HG2	1.87	0.75
1:B:240:GLY:HA2	1:B:241:SER:HG	1.52	0.75
1:B:397:GLY:HA3	1:B:475:MET:CE	2.17	0.75
1:B:22:ILE:HD12	1:B:90:THR:CG2	2.17	0.74

*Continued on next page...*

*Continued from previous page...*

Atom-1	Atom-2	Interatomic distance (Å)	Clash overlap (Å)
1:B:159:LEU:CD2	1:B:163:LYS:HG2	2.17	0.74
1:B:154:LEU:HD22	1:B:167:THR:CG2	2.17	0.74
1:B:92:LEU:HA	1:B:95:GLU:OE2	1.87	0.74
1:B:245:VAL:CG1	1:B:246:ASP:N	2.51	0.74
1:B:41:SER:HB3	1:B:45:ASP:CB	2.17	0.74
1:B:139:GLU:HG2	1:B:178:LYS:HE3	1.67	0.74
1:B:266:VAL:HB	1:B:290:LEU:CD2	2.17	0.74
1:B:29:THR:O	1:B:34:GLY:HA3	1.86	0.74
1:B:188:VAL:CB	1:B:377:LEU:HD22	2.18	0.74
1:B:300:GLU:OE2	1:B:301:HIS:HB2	1.88	0.74
1:B:500:VAL:HA	1:B:503:ARG:CD	2.18	0.74
1:B:32:PRO:O	1:B:33:LYS:HE3	1.87	0.74
1:B:40:LEU:HD23	1:B:48:LEU:HD12	1.70	0.74
1:B:232:ASP:HA	1:B:284:TYR:CB	2.18	0.74
1:B:140:VAL:CG2	1:B:175:LEU:HB3	2.17	0.73
1:B:140:VAL:CG2	1:B:175:LEU:HD22	2.13	0.73
1:B:209:LYS:HD2	1:B:299:ILE:CG2	2.18	0.73
1:B:219:ILE:CD1	1:B:336:ILE:HB	2.18	0.73
1:B:33:LYS:HB3	1:B:440:ASN:HB2	1.68	0.73
1:B:150:ALA:HB1	1:B:167:THR:OG1	1.89	0.73
1:B:219:ILE:O	1:B:335:LEU:HD12	1.89	0.73
1:B:322:PHE:HA	1:B:324:HIS:CD2	2.24	0.73
1:B:15:SER:HB3	1:B:501:ILE:HG21	1.70	0.73
1:B:134:ASP:HB3	1:B:393:THR:OG1	1.88	0.73
1:B:245:VAL:HG12	1:B:246:ASP:N	2.03	0.73
1:B:398:GLY:HA3	1:B:465:LEU:CD2	2.18	0.73
1:B:157:LYS:CB	1:B:159:LEU:HD21	2.19	0.73
1:B:219:ILE:HD11	1:B:336:ILE:HB	1.70	0.73
1:B:219:ILE:HG12	1:B:336:ILE:HB	1.69	0.73
1:B:162:HIS:NE2	1:B:196:LEU:HD22	2.03	0.73
1:B:401:GLU:HG2	1:B:433:LEU:CD2	2.19	0.73
1:B:100:ALA:HA	1:B:103:LEU:CD1	2.17	0.73
1:B:100:ALA:O	1:B:103:LEU:HB2	1.89	0.73
1:B:128:LEU:C	1:B:129:LEU:HD13	2.08	0.72
1:B:23:GLY:CA	1:B:26:VAL:HG22	2.19	0.72
1:B:154:LEU:HD21	1:B:167:THR:HB	1.71	0.72
1:B:19:ALA:O	1:B:22:ILE:HG12	1.89	0.72
1:B:40:LEU:CB	1:B:48:LEU:HG	2.09	0.72
1:B:325:PRO:O	1:B:328:VAL:HG13	1.89	0.72
1:B:146:LEU:HD12	1:B:171:VAL:HG13	1.70	0.72
1:B:320:SER:O	1:B:324:HIS:HB3	1.90	0.72

*Continued on next page...*



*Continued from previous page...*

Atom-1	Atom-2	Interatomic distance (Å)	Clash overlap (Å)
1:B:402:MET:HB3	1:B:456:HIS:CG	2.24	0.72
1:B:114:ILE:HA	1:B:117:TRP:CE3	2.23	0.72
1:B:140:VAL:CG1	1:B:175:LEU:HD13	2.19	0.72
1:B:262:MET:HE1	1:B:286:TYR:O	1.89	0.72
1:B:159:LEU:HG	1:B:163:LYS:HG2	1.72	0.71
1:B:218:ARG:HG3	1:B:337:GLU:CB	2.16	0.71
1:B:39:LEU:O	1:B:48:LEU:HA	1.90	0.71
1:B:102:SER:O	1:B:105:ALA:HB3	1.88	0.71
1:B:231:MET:HE3	1:B:287:PRO:CG	2.20	0.71
1:B:163:LYS:CD	1:B:166:PHE:HB2	2.21	0.71
1:B:211:ILE:HG13	1:B:298:ALA:O	1.90	0.71
1:B:299:ILE:CG2	1:B:302:ALA:HB2	2.20	0.71
1:B:146:LEU:CD1	1:B:171:VAL:HG13	2.21	0.71
1:B:231:MET:HB3	1:B:265:LYS:NZ	2.06	0.71
1:B:317:GLU:CB	1:B:329:LYS:HD3	2.18	0.71
1:B:317:GLU:HA	1:B:329:LYS:CA	2.19	0.71
1:B:59:LYS:CE	1:B:76:ARG:HB2	2.21	0.71
1:B:220:GLU:HG2	1:B:335:LEU:HD13	1.72	0.71
1:B:117:TRP:CD1	1:B:495:ALA:HB1	2.24	0.71
1:B:263:LYS:O	1:B:267:GLU:HG2	1.91	0.71
1:B:411:LEU:HD13	1:B:423:MET:HE1	1.71	0.71
1:B:208:ASP:O	1:B:209:LYS:HG3	1.89	0.71
1:B:396:GLY:HA3	1:B:480:ILE:HG22	1.72	0.71
1:B:484:PHE:HE2	1:B:488:ARG:HD3	1.55	0.71
1:B:235:LYS:HB3	1:B:235:LYS:HZ3	1.53	0.70
1:B:95:GLU:C	1:B:98:ARG:HD2	2.11	0.70
1:B:433:LEU:HB2	1:B:434:PRO:HD3	1.72	0.70
1:B:36:ASP:OD2	1:B:158:LEU:HB2	1.91	0.70
1:B:324:HIS:HB2	1:B:329:LYS:HZ1	1.55	0.70
1:B:452:LEU:HD13	1:B:472:ILE:HG22	1.74	0.70
1:B:52:ASN:N	1:B:375:ARG:HH11	1.89	0.70
1:B:163:LYS:CE	1:B:166:PHE:HB2	2.22	0.70
1:B:190:LYS:HA	1:B:362:LEU:CB	2.18	0.70
1:B:190:LYS:HD3	1:B:370:LEU:HD21	1.73	0.70
1:B:22:ILE:O	1:B:26:VAL:HG13	1.92	0.70
1:B:231:MET:HG3	1:B:283:ILE:HG13	1.70	0.70
1:B:26:VAL:HG21	1:B:91:VAL:HG22	1.72	0.70
1:B:106:LYS:O	1:B:108:ILE:HG13	1.91	0.70
1:B:117:TRP:HD1	1:B:495:ALA:CB	2.05	0.70
1:B:118:ARG:O	1:B:121:THR:HB	1.91	0.70
1:B:188:VAL:HG11	1:B:377:LEU:CD2	2.22	0.70

*Continued on next page...*

*Continued from previous page...*

Atom-1	Atom-2	Interatomic distance (Å)	Clash overlap (Å)
1:B:268:ARG:HB3	1:B:271:LYS:CE	2.21	0.70
1:B:117:TRP:CD2	1:B:499:GLU:HG3	2.26	0.70
1:B:190:LYS:HD3	1:B:370:LEU:CD2	2.22	0.70
1:B:369:ILE:O	1:B:372:GLU:HB3	1.92	0.70
1:B:41:SER:HB3	1:B:45:ASP:CG	2.13	0.69
1:B:190:LYS:CD	1:B:370:LEU:HG	2.22	0.69
1:B:225:LEU:HD21	1:B:324:HIS:ND1	2.06	0.69
1:B:448:LEU:HD21	1:B:465:LEU:CD1	2.11	0.69
1:B:27:LYS:HA	1:B:436:ILE:HD11	1.74	0.69
1:B:128:LEU:HD21	1:B:488:ARG:HG2	1.73	0.69
1:B:218:ARG:HD3	1:B:335:LEU:CD1	2.20	0.69
1:B:340:MET:HG2	1:B:345:LYS:HG2	1.72	0.69
1:B:411:LEU:O	1:B:415:THR:HG23	1.92	0.69
1:B:243:VAL:HG13	1:B:244:ARG:H	1.56	0.69
1:B:250:LYS:HA	1:B:250:LYS:CE	2.15	0.69
1:B:19:ALA:HB3	1:B:97:LEU:HD22	1.75	0.69
1:B:99:GLU:C	1:B:103:LEU:HD13	2.13	0.69
1:B:265:LYS:HD3	1:B:287:PRO:CG	2.22	0.69
1:B:313:VAL:CA	1:B:354:LEU:HD22	2.21	0.69
1:B:17:ILE:O	1:B:20:ILE:HG22	1.93	0.69
1:B:109:HIS:HB3	1:B:112:THR:OG1	1.92	0.69
1:B:211:ILE:CG2	1:B:298:ALA:H	2.06	0.69
1:B:141:LYS:CD	1:B:144:GLN:HG2	2.19	0.69
1:B:147:MET:CE	1:B:168:LYS:HE3	2.21	0.69
1:B:500:VAL:HA	1:B:503:ARG:CG	2.22	0.69
1:B:128:LEU:HD22	1:B:484:PHE:CE2	2.28	0.69
1:B:146:LEU:CD2	1:B:150:ALA:HB3	2.23	0.69
1:B:174:VAL:CG1	1:B:384:LEU:HB3	2.23	0.69
1:B:211:ILE:HB	1:B:215:GLN:OE1	1.93	0.69
1:B:342:GLY:HA3	1:B:343:GLU:HB3	1.73	0.69
1:B:190:LYS:HE2	1:B:370:LEU:HG	1.73	0.68
1:B:160:THR:HG23	1:B:164:ASP:CA	2.23	0.68
1:B:354:LEU:HG	1:B:356:GLU:N	1.98	0.68
1:B:39:LEU:HD12	1:B:57:ILE:HG13	1.75	0.68
1:B:110:PRO:O	1:B:113:ILE:HB	1.93	0.68
1:B:188:VAL:HG11	1:B:377:LEU:HD22	1.76	0.68
1:B:210:LYS:HE2	1:B:212:GLY:O	1.94	0.68
1:B:61:ILE:CG1	1:B:63:VAL:HG22	2.24	0.68
1:B:92:LEU:HD11	1:B:433:LEU:HG	1.76	0.68
1:B:354:LEU:CG	1:B:356:GLU:H	1.99	0.68
1:B:152:THR:HA	1:B:155:SER:OG	1.94	0.68

*Continued on next page...*

*Continued from previous page...*

Atom-1	Atom-2	Interatomic distance (Å)	Clash overlap (Å)
1:B:443:TYR:CE1	1:B:470:GLY:HA2	2.28	0.68
1:B:133:VAL:HG23	1:B:134:ASP:N	2.08	0.68
1:B:398:GLY:HA2	1:B:401:GLU:OE1	1.92	0.68
1:B:176:ARG:NH1	1:B:201:LEU:HD21	2.09	0.68
1:B:500:VAL:CA	1:B:503:ARG:HG2	2.23	0.68
1:B:19:ALA:HB1	1:B:94:ALA:HB1	1.75	0.68
1:B:78:GLN:HE22	1:B:489:GLN:HB2	1.57	0.68
1:B:312:LEU:CD1	1:B:356:GLU:HB3	2.22	0.68
1:B:433:LEU:HD12	1:B:433:LEU:H	1.59	0.68
1:B:215:GLN:HA	1:B:292:GLY:HA2	1.75	0.68
1:B:122:LYS:O	1:B:125:ARG:HG2	1.95	0.67
1:B:283:ILE:HG22	1:B:300:GLU:HG3	1.76	0.67
1:B:231:MET:SD	1:B:265:LYS:HE2	2.34	0.67
1:B:313:VAL:HG22	1:B:357:ALA:HB3	1.76	0.67
1:B:280:ARG:HG3	1:B:304:PHE:CA	2.24	0.67
1:B:231:MET:HE1	1:B:265:LYS:HD3	1.77	0.67
1:B:404:MET:CE	1:B:430:LEU:HD11	2.25	0.67
1:B:114:ILE:O	1:B:117:TRP:HE3	1.78	0.67
1:B:234:ASP:OD1	1:B:235:LYS:N	2.26	0.67
1:B:27:LYS:CA	1:B:436:ILE:HD11	2.24	0.67
1:B:159:LEU:HD22	1:B:159:LEU:N	2.10	0.67
1:B:160:THR:HA	1:B:163:LYS:CB	2.24	0.67
1:B:89:VAL:CG1	1:B:490:VAL:HB	2.24	0.67
1:B:232:ASP:N	1:B:284:TYR:HB2	2.09	0.67
1:B:368:GLN:HA	1:B:371:ASP:OD2	1.94	0.67
1:B:146:LEU:CD2	1:B:148:ASN:H	2.08	0.66
1:B:147:MET:SD	1:B:168:LYS:HD2	2.35	0.66
1:B:225:LEU:HD22	1:B:329:LYS:HD2	1.77	0.66
1:B:345:LYS:C	1:B:346:LEU:HD12	2.15	0.66
1:B:425:SER:O	1:B:428:LYS:HG2	1.95	0.66
1:B:484:PHE:HD2	1:B:488:ARG:HE	1.41	0.66
1:B:240:GLY:CA	1:B:241:SER:OG	2.42	0.66
1:B:245:VAL:CG1	1:B:250:LYS:HB2	2.23	0.66
1:B:93:ALA:O	1:B:96:LEU:HD12	1.96	0.66
1:B:312:LEU:O	1:B:354:LEU:HD22	1.95	0.66
1:B:412:ALA:HB1	1:B:420:ALA:O	1.94	0.66
1:B:183:LEU:HD21	1:B:381:LEU:HD11	1.77	0.66
1:B:236:ILE:HG23	1:B:237:LYS:N	2.10	0.66
1:B:241:SER:C	1:B:243:VAL:HG23	2.16	0.66
1:B:352:VAL:CG2	1:B:354:LEU:HB3	2.25	0.66
1:B:141:LYS:HE3	1:B:142:PHE:HB2	1.76	0.66

*Continued on next page...*

*Continued from previous page...*

Atom-1	Atom-2	Interatomic distance (Å)	Clash overlap (Å)
1:B:154:LEU:HD11	1:B:163:LYS:NZ	2.11	0.66
1:B:41:SER:C	1:B:45:ASP:HB2	2.14	0.66
1:B:225:LEU:CD2	1:B:329:LYS:HE2	2.25	0.66
1:B:261:LYS:O	1:B:264:GLU:HG2	1.95	0.66
1:B:437:ILE:HA	1:B:440:ASN:ND2	2.10	0.66
1:B:24:ASP:O	1:B:27:LYS:HG2	1.96	0.66
1:B:274:ILE:CG2	1:B:296:VAL:HG21	2.26	0.66
1:B:312:LEU:HD13	1:B:354:LEU:HD21	1.77	0.66
1:B:52:ASN:CB	1:B:157:LYS:HD3	2.25	0.66
1:B:79:ASP:HA	1:B:83:GLY:N	2.10	0.66
1:B:192:LEU:HG	1:B:366:THR:CG2	2.26	0.66
1:B:412:ALA:HA	1:B:423:MET:HB3	1.77	0.66
1:B:100:ALA:HA	1:B:103:LEU:HB2	1.78	0.66
1:B:27:LYS:HG3	1:B:28:SER:N	2.11	0.65
1:B:139:GLU:HG2	1:B:178:LYS:CE	2.27	0.65
1:B:225:LEU:HD11	1:B:324:HIS:ND1	2.11	0.65
1:B:269:ILE:HD11	1:B:291:PHE:CE2	2.31	0.65
1:B:140:VAL:HG21	1:B:175:LEU:HB3	1.78	0.65
1:B:159:LEU:CG	1:B:163:LYS:HG2	2.26	0.65
1:B:427:ALA:CA	1:B:430:LEU:HD23	2.27	0.65
1:B:117:TRP:CG	1:B:499:GLU:HG3	2.32	0.65
1:B:154:LEU:HD21	1:B:163:LYS:HZ3	1.61	0.65
1:B:219:ILE:HD12	1:B:222:ALA:CB	2.26	0.65
1:B:274:ILE:O	1:B:296:VAL:HG22	1.96	0.65
1:B:299:ILE:HG21	1:B:302:ALA:HB2	1.78	0.65
1:B:372:GLU:HG3	1:B:375:ARG:NE	2.11	0.65
1:B:143:ARG:HH22	1:B:168:LYS:HE3	1.62	0.65
1:B:145:ASP:O	1:B:171:VAL:HG11	1.96	0.65
1:B:236:ILE:HG12	1:B:237:LYS:H	1.60	0.65
1:B:438:ALA:O	1:B:441:ALA:HB3	1.95	0.65
1:B:366:THR:HA	1:B:370:LEU:HD22	1.79	0.65
1:B:52:ASN:HB3	1:B:157:LYS:CD	2.27	0.65
1:B:65:ASN:CG	1:B:66:PRO:HD3	2.16	0.65
1:B:33:LYS:CB	1:B:440:ASN:HB2	2.27	0.65
1:B:128:LEU:HD13	1:B:488:ARG:CD	2.27	0.65
1:B:421:VAL:O	1:B:424:GLU:HG2	1.96	0.65
1:B:452:LEU:HD11	1:B:456:HIS:HE1	1.62	0.65
1:B:94:ALA:CA	1:B:97:LEU:HD13	2.27	0.64
1:B:141:LYS:HG3	1:B:144:GLN:H	1.62	0.64
1:B:163:LYS:HD2	1:B:166:PHE:CD1	2.32	0.64
1:B:163:LYS:HD2	1:B:166:PHE:CG	2.32	0.64

*Continued on next page...*

*Continued from previous page...*

Atom-1	Atom-2	Interatomic distance (Å)	Clash overlap (Å)
1:B:280:ARG:HG3	1:B:304:PHE:HA	1.79	0.64
1:B:22:ILE:HD12	1:B:90:THR:HG21	1.79	0.64
1:B:92:LEU:CD2	1:B:433:LEU:HD21	2.22	0.64
1:B:100:ALA:N	1:B:103:LEU:HD13	2.12	0.64
1:B:211:ILE:CG1	1:B:298:ALA:H	2.10	0.64
1:B:211:ILE:HG12	1:B:297:MET:HA	1.77	0.64
1:B:37:LYS:O	1:B:50:VAL:HG23	1.97	0.64
1:B:159:LEU:HD23	1:B:163:LYS:CG	2.28	0.64
1:B:316:GLY:C	1:B:330:LEU:H	2.00	0.64
1:B:92:LEU:HD11	1:B:433:LEU:CG	2.28	0.64
1:B:154:LEU:HD21	1:B:163:LYS:NZ	2.12	0.64
1:B:317:GLU:HB2	1:B:329:LYS:NZ	2.12	0.64
1:B:59:LYS:HE2	1:B:76:ARG:CB	2.26	0.64
1:B:83:GLY:HA3	1:B:84:ASP:CB	2.28	0.64
1:B:83:GLY:HA3	1:B:84:ASP:CG	2.18	0.64
1:B:206:LEU:HD13	1:B:207:LEU:N	2.13	0.64
1:B:160:THR:OG1	1:B:163:LYS:HB3	1.97	0.64
1:B:210:LYS:NZ	1:B:213:VAL:HA	2.12	0.64
1:B:231:MET:C	1:B:284:TYR:HB2	2.18	0.64
1:B:244:ARG:HD3	1:B:245:VAL:CA	2.22	0.64
1:B:404:MET:O	1:B:408:VAL:HG22	1.97	0.64
1:B:30:LEU:HD13	1:B:436:ILE:HD11	1.80	0.64
1:B:64:ASP:CG	1:B:66:PRO:HD2	2.18	0.64
1:B:128:LEU:N	1:B:128:LEU:HD23	2.13	0.64
1:B:49:MET:HA	1:B:368:GLN:HE22	1.63	0.63
1:B:146:LEU:HG	1:B:171:VAL:CG1	2.26	0.63
1:B:159:LEU:HD23	1:B:163:LYS:HG2	1.79	0.63
1:B:231:MET:HE1	1:B:265:LYS:CD	2.29	0.63
1:B:280:ARG:HA	1:B:302:ALA:O	1.97	0.63
1:B:309:ARG:O	1:B:313:VAL:HG23	1.98	0.63
1:B:343:GLU:HG3	1:B:344:ASP:N	2.08	0.63
1:B:393:THR:O	1:B:394:VAL:HG13	1.99	0.63
1:B:314:THR:HG23	1:B:315:GLY:N	2.12	0.63
1:B:146:LEU:HB3	1:B:168:LYS:HG3	1.81	0.63
1:B:334:LYS:HD3	1:B:334:LYS:C	2.19	0.63
1:B:394:VAL:HG23	1:B:482:GLU:HB2	1.79	0.63
1:B:162:HIS:HB3	1:B:166:PHE:HE1	1.63	0.63
1:B:50:VAL:H	1:B:368:GLN:NE2	1.97	0.63
1:B:163:LYS:HD2	1:B:166:PHE:CB	2.27	0.63
1:B:244:ARG:CD	1:B:244:ARG:C	2.62	0.63
1:B:377:LEU:HG	1:B:377:LEU:O	1.97	0.63

*Continued on next page...*

*Continued from previous page...*

Atom-1	Atom-2	Interatomic distance (Å)	Clash overlap (Å)
1:B:114:ILE:HG23	1:B:499:GLU:HG2	1.81	0.63
1:B:258:GLU:HA	1:B:261:LYS:HZ3	1.64	0.63
1:B:106:LYS:HD3	1:B:108:ILE:HD12	1.81	0.63
1:B:154:LEU:CD1	1:B:167:THR:HB	2.28	0.63
1:B:189:ILE:HG22	1:B:190:LYS:N	2.14	0.62
1:B:269:ILE:CG1	1:B:274:ILE:HG21	2.23	0.62
1:B:275:ASN:O	1:B:296:VAL:HA	1.98	0.62
1:B:334:LYS:HB2	1:B:351:GLY:HA3	1.78	0.62
1:B:330:LEU:N	1:B:330:LEU:HD22	2.14	0.62
1:B:100:ALA:HA	1:B:103:LEU:CG	2.29	0.62
1:B:117:TRP:CD1	1:B:499:GLU:HG3	2.34	0.62
1:B:139:GLU:HA	1:B:140:VAL:C	2.20	0.62
1:B:160:THR:HG23	1:B:164:ASP:H	1.65	0.62
1:B:211:ILE:HD11	1:B:297:MET:CG	2.24	0.62
1:B:39:LEU:CD1	1:B:57:ILE:HG13	2.29	0.62
1:B:128:LEU:O	1:B:129:LEU:HD22	1.99	0.62
1:B:338:GLU:OE2	1:B:345:LYS:HE2	2.00	0.62
1:B:19:ALA:HB2	1:B:97:LEU:HD22	1.82	0.62
1:B:133:VAL:HG23	1:B:134:ASP:OD1	1.98	0.62
1:B:154:LEU:CD1	1:B:163:LYS:HZ2	2.13	0.62
1:B:326:GLU:O	1:B:329:LYS:HB2	1.99	0.62
1:B:287:PRO:O	1:B:291:PHE:HD1	1.82	0.62
1:B:26:VAL:HG23	1:B:91:VAL:HG22	1.80	0.62
1:B:219:ILE:HD12	1:B:222:ALA:HB1	1.81	0.62
1:B:235:LYS:NZ	1:B:235:LYS:CB	2.63	0.62
1:B:268:ARG:CB	1:B:271:LYS:HE2	2.30	0.62
1:B:190:LYS:HD3	1:B:370:LEU:CG	2.30	0.61
1:B:106:LYS:NZ	1:B:108:ILE:HD12	2.15	0.61
1:B:324:HIS:HB2	1:B:329:LYS:CE	2.30	0.61
1:B:171:VAL:O	1:B:175:LEU:HG	2.00	0.61
1:B:441:ALA:HB2	1:B:467:MET:HG2	1.82	0.61
1:B:106:LYS:HD2	1:B:108:ILE:HB	1.81	0.61
1:B:215:GLN:CG	1:B:292:GLY:HA2	2.16	0.61
1:B:317:GLU:CD	1:B:329:LYS:HD3	2.20	0.61
1:B:154:LEU:HB3	1:B:160:THR:OG1	2.00	0.61
1:B:154:LEU:HD23	1:B:160:THR:OG1	2.01	0.61
1:B:275:ASN:O	1:B:296:VAL:HG13	2.01	0.61
1:B:282:LEU:H	1:B:282:LEU:CD2	2.10	0.61
1:B:108:ILE:HG22	1:B:109:HIS:N	2.15	0.61
1:B:161:HIS:CG	1:B:162:HIS:H	2.18	0.61
1:B:313:VAL:CG1	1:B:352:VAL:HB	2.31	0.61

*Continued on next page...*

*Continued from previous page...*

Atom-1	Atom-2	Interatomic distance (Å)	Clash overlap (Å)
1:B:324:HIS:O	1:B:328:VAL:HG22	2.01	0.61
1:B:372:GLU:HB2	1:B:375:ARG:NH2	2.10	0.61
1:B:396:GLY:O	1:B:475:MET:HG2	2.00	0.61
1:B:82:VAL:HG13	1:B:83:GLY:N	2.13	0.61
1:B:436:ILE:HG23	1:B:437:ILE:N	2.15	0.61
1:B:140:VAL:HG22	1:B:175:LEU:CG	2.30	0.61
1:B:339:VAL:HG12	1:B:340:MET:N	2.16	0.61
1:B:502:LEU:CD2	1:B:502:LEU:C	2.68	0.61
1:B:95:GLU:HA	1:B:98:ARG:HD2	1.82	0.61
1:B:227:ALA:HB2	1:B:277:PHE:CZ	2.36	0.61
1:B:108:ILE:HG22	1:B:109:HIS:H	1.66	0.60
1:B:128:LEU:HD22	1:B:488:ARG:HG2	1.81	0.60
1:B:141:LYS:HG3	1:B:144:GLN:N	2.15	0.60
1:B:154:LEU:CD2	1:B:164:ASP:HA	2.31	0.60
1:B:368:GLN:O	1:B:371:ASP:HB2	2.01	0.60
1:B:404:MET:HE3	1:B:430:LEU:HD11	1.82	0.60
1:B:106:LYS:CD	1:B:108:ILE:HB	2.30	0.60
1:B:39:LEU:HD12	1:B:57:ILE:CG1	2.31	0.60
1:B:154:LEU:HD21	1:B:163:LYS:O	2.01	0.60
1:B:159:LEU:HD13	1:B:159:LEU:H	1.66	0.60
1:B:162:HIS:CB	1:B:166:PHE:HE1	2.14	0.60
1:B:283:ILE:HG22	1:B:300:GLU:CG	2.31	0.60
1:B:315:GLY:O	1:B:330:LEU:HD23	2.01	0.60
1:B:369:ILE:C	1:B:372:GLU:H	2.03	0.60
1:B:29:THR:HA	1:B:35:MET:H	1.67	0.60
1:B:206:LEU:HD23	1:B:348:HIS:NE2	2.15	0.60
1:B:52:ASN:HB3	1:B:157:LYS:HD3	1.83	0.60
1:B:192:LEU:HA	1:B:366:THR:CG2	2.31	0.60
1:B:298:ALA:C	1:B:299:ILE:HD12	2.22	0.60
1:B:143:ARG:HH22	1:B:147:MET:HE1	1.66	0.60
1:B:277:PHE:HE2	1:B:279:ASN:HD22	1.50	0.60
1:B:15:SER:OG	1:B:501:ILE:HG23	2.01	0.60
1:B:79:ASP:HA	1:B:83:GLY:HA2	1.81	0.60
1:B:89:VAL:HG12	1:B:490:VAL:HB	1.82	0.60
1:B:128:LEU:HD13	1:B:488:ARG:HD2	1.83	0.60
1:B:268:ARG:HB3	1:B:271:LYS:HE2	1.82	0.60
1:B:486:VAL:O	1:B:490:VAL:HG12	2.02	0.60
1:B:8:ALA:HB1	1:B:9:GLU:OE1	2.01	0.60
1:B:394:VAL:HG22	1:B:482:GLU:O	2.02	0.60
1:B:31:GLY:O	1:B:156:SER:HA	2.02	0.60
1:B:103:LEU:HG	1:B:113:ILE:HD13	1.83	0.60

*Continued on next page...*

*Continued from previous page...*

Atom-1	Atom-2	Interatomic distance (Å)	Clash overlap (Å)
1:B:160:THR:CG2	1:B:164:ASP:HB3	2.30	0.60
1:B:171:VAL:HG12	1:B:384:LEU:CD1	2.31	0.60
1:B:48:LEU:HD12	1:B:48:LEU:N	2.17	0.59
1:B:124:ALA:HA	1:B:491:LEU:CD1	2.32	0.59
1:B:263:LYS:O	1:B:266:VAL:HG12	2.02	0.59
1:B:133:VAL:HA	1:B:394:VAL:HA	1.83	0.59
1:B:282:LEU:HD22	1:B:282:LEU:N	2.13	0.59
1:B:329:LYS:C	1:B:330:LEU:HD22	2.23	0.59
1:B:404:MET:O	1:B:408:VAL:HG13	2.02	0.59
1:B:209:LYS:CD	1:B:299:ILE:HG23	2.30	0.59
1:B:297:MET:SD	1:B:347:ILE:HD11	2.42	0.59
1:B:365:ALA:O	1:B:366:THR:HG23	2.01	0.59
1:B:163:LYS:NZ	1:B:167:THR:HB	2.18	0.59
1:B:171:VAL:HG12	1:B:384:LEU:HD12	1.84	0.59
1:B:324:HIS:HB2	1:B:329:LYS:NZ	2.17	0.59
1:B:185:ALA:HB1	1:B:357:ALA:CB	2.32	0.59
1:B:210:LYS:HG2	1:B:212:GLY:O	2.03	0.59
1:B:219:ILE:HD13	1:B:276:CYS:HB2	1.85	0.59
1:B:214:ASN:O	1:B:215:GLN:HB2	2.03	0.59
1:B:265:LYS:CD	1:B:287:PRO:HG3	2.30	0.59
1:B:188:VAL:CG1	1:B:377:LEU:HD22	2.31	0.59
1:B:192:LEU:N	1:B:192:LEU:HD12	2.17	0.59
1:B:226:ILE:HA	1:B:278:ILE:HG23	1.85	0.59
1:B:433:LEU:HD12	1:B:433:LEU:N	2.17	0.59
1:B:33:LYS:HD3	1:B:467:MET:HB3	1.84	0.59
1:B:119:GLU:OE2	1:B:423:MET:HB2	2.03	0.59
1:B:297:MET:HE1	1:B:336:ILE:HG22	1.85	0.59
1:B:346:LEU:HD12	1:B:346:LEU:N	2.18	0.59
1:B:133:VAL:HG11	1:B:484:PHE:CD1	2.38	0.59
1:B:160:THR:HG23	1:B:164:ASP:CB	2.32	0.59
1:B:183:LEU:O	1:B:184:GLU:HG3	2.02	0.59
1:B:371:ASP:O	1:B:374:GLU:HB3	2.02	0.59
1:B:94:ALA:O	1:B:97:LEU:HD13	2.03	0.59
1:B:160:THR:HG22	1:B:160:THR:O	2.03	0.58
1:B:154:LEU:O	1:B:157:LYS:HB2	2.03	0.58
1:B:218:ARG:CG	1:B:335:LEU:HD11	2.33	0.58
1:B:359:THR:HG22	1:B:360:ILE:N	2.17	0.58
1:B:390:ASP:HB3	1:B:485:GLN:OE1	2.03	0.58
1:B:95:GLU:CA	1:B:98:ARG:HD2	2.33	0.58
1:B:412:ALA:O	1:B:420:ALA:HA	2.04	0.58
1:B:59:LYS:HE3	1:B:73:ASP:OD1	2.04	0.58

*Continued on next page...*



*Continued from previous page...*

Atom-1	Atom-2	Interatomic distance (Å)	Clash overlap (Å)
1:B:78:GLN:CD	1:B:489:GLN:HB2	2.23	0.58
1:B:238:ILE:CD1	1:B:238:ILE:N	2.66	0.58
1:B:250:LYS:HE2	1:B:250:LYS:CA	2.13	0.58
1:B:280:ARG:HG3	1:B:304:PHE:N	2.18	0.58
1:B:32:PRO:HA	1:B:155:SER:HB3	1.84	0.58
1:B:162:HIS:HB3	1:B:166:PHE:CE1	2.38	0.58
1:B:278:ILE:HG23	1:B:278:ILE:O	2.04	0.58
1:B:106:LYS:CD	1:B:108:ILE:HD12	2.33	0.58
1:B:216:PRO:CG	1:B:295:GLY:HA2	2.32	0.58
1:B:291:PHE:HD2	1:B:296:VAL:CG1	2.16	0.58
1:B:159:LEU:HD23	1:B:160:THR:OG1	2.03	0.58
1:B:106:LYS:O	1:B:106:LYS:HD3	2.04	0.58
1:B:281:GLN:H	1:B:301:HIS:HA	1.68	0.58
1:B:310:LEU:HD13	1:B:310:LEU:O	2.03	0.58
1:B:342:GLY:HA3	1:B:343:GLU:HB2	1.82	0.58
1:B:372:GLU:CB	1:B:375:ARG:HH21	2.12	0.58
1:B:397:GLY:HA3	1:B:475:MET:HE1	1.86	0.58
1:B:25:LEU:HD22	1:B:25:LEU:N	2.18	0.58
1:B:19:ALA:HB2	1:B:97:LEU:CD2	2.34	0.57
1:B:305:VAL:HG13	1:B:306:GLY:N	2.19	0.57
1:B:190:LYS:HD3	1:B:370:LEU:HG	1.84	0.57
1:B:224:ILE:HG12	1:B:349:PHE:CE1	2.39	0.57
1:B:265:LYS:NZ	1:B:287:PRO:HG2	2.19	0.57
1:B:308:GLU:OE1	1:B:308:GLU:HA	2.03	0.57
1:B:160:THR:HA	1:B:163:LYS:CA	2.33	0.57
1:B:218:ARG:HG2	1:B:219:ILE:N	2.19	0.57
1:B:255:GLU:O	1:B:259:LYS:HE3	2.05	0.57
1:B:231:MET:HB2	1:B:283:ILE:CG1	2.33	0.57
1:B:231:MET:CE	1:B:265:LYS:HD3	2.33	0.57
1:B:312:LEU:HD13	1:B:354:LEU:CD2	2.33	0.57
1:B:480:ILE:HD12	1:B:480:ILE:N	2.20	0.57
1:B:500:VAL:HA	1:B:503:ARG:HD2	1.86	0.57
1:B:8:ALA:CB	1:B:9:GLU:OE1	2.53	0.57
1:B:13:LEU:C	1:B:13:LEU:CD2	2.73	0.57
1:B:317:GLU:HB2	1:B:329:LYS:HZ3	1.68	0.57
1:B:40:LEU:HB2	1:B:48:LEU:CD1	2.33	0.57
1:B:146:LEU:HD23	1:B:148:ASN:H	1.67	0.57
1:B:188:VAL:HG22	1:B:189:ILE:N	2.19	0.57
1:B:236:ILE:HG22	1:B:238:ILE:O	2.05	0.57
1:B:408:VAL:CG2	1:B:427:ALA:HB1	2.35	0.57
1:B:54:GLY:O	1:B:57:ILE:HG22	2.05	0.57

*Continued on next page...*

*Continued from previous page...*

Atom-1	Atom-2	Interatomic distance (Å)	Clash overlap (Å)
1:B:82:VAL:HA	1:B:386:GLN:CG	2.34	0.57
1:B:192:LEU:HG	1:B:366:THR:HG22	1.86	0.57
1:B:233:THR:HG22	1:B:234:ASP:H	1.58	0.57
1:B:326:GLU:OE1	1:B:327:LEU:HD13	2.05	0.57
1:B:395:TYR:CZ	1:B:462:THR:HG22	2.40	0.57
1:B:452:LEU:HD13	1:B:472:ILE:CG2	2.35	0.57
1:B:51:THR:HG23	1:B:375:ARG:HD3	1.86	0.56
1:B:70:VAL:HG23	1:B:71:LEU:N	2.20	0.56
1:B:257:ALA:O	1:B:261:LYS:HD2	2.05	0.56
1:B:89:VAL:HB	1:B:490:VAL:CG2	2.34	0.56
1:B:104:ILE:HG13	1:B:105:ALA:N	2.20	0.56
1:B:117:TRP:HE1	1:B:498:ALA:HB3	1.70	0.56
1:B:128:LEU:O	1:B:129:LEU:HD13	2.03	0.56
1:B:486:VAL:HG23	1:B:487:LYS:N	2.20	0.56
1:B:92:LEU:CD2	1:B:433:LEU:HD11	2.34	0.56
1:B:478:LEU:HB3	1:B:480:ILE:CD1	2.35	0.56
1:B:210:LYS:HE2	1:B:213:VAL:HA	1.87	0.56
1:B:225:LEU:CD2	1:B:329:LYS:HG3	2.35	0.56
1:B:483:SER:O	1:B:486:VAL:HG22	2.04	0.56
1:B:82:VAL:HG22	1:B:83:GLY:N	2.21	0.56
1:B:315:GLY:O	1:B:330:LEU:HB2	2.06	0.56
1:B:395:TYR:HB3	1:B:399:CYS:SG	2.46	0.56
1:B:57:ILE:CG2	1:B:58:LEU:HD22	2.29	0.56
1:B:61:ILE:HG12	1:B:63:VAL:CG2	2.33	0.56
1:B:185:ALA:O	1:B:357:ALA:HB1	2.05	0.56
1:B:233:THR:HG23	1:B:234:ASP:H	1.70	0.56
1:B:381:LEU:HD13	1:B:381:LEU:C	2.25	0.56
1:B:140:VAL:HG22	1:B:175:LEU:CB	2.36	0.56
1:B:269:ILE:HG12	1:B:274:ILE:HB	1.88	0.56
1:B:160:THR:N	1:B:163:LYS:HB3	2.20	0.55
1:B:225:LEU:HD13	1:B:226:ILE:O	2.06	0.55
1:B:404:MET:HE2	1:B:430:LEU:CD1	2.36	0.55
1:B:469:GLU:OE1	1:B:469:GLU:HA	2.05	0.55
1:B:206:LEU:HD13	1:B:206:LEU:C	2.27	0.55
1:B:244:ARG:CD	1:B:245:VAL:H	2.07	0.55
1:B:325:PRO:C	1:B:326:GLU:HG3	2.26	0.55
1:B:154:LEU:HD22	1:B:167:THR:HG21	1.88	0.55
1:B:159:LEU:C	1:B:163:LYS:HB2	2.27	0.55
1:B:192:LEU:CG	1:B:366:THR:HG21	2.37	0.55
1:B:211:ILE:HG13	1:B:297:MET:HG3	1.88	0.55
1:B:40:LEU:HD13	1:B:40:LEU:C	2.27	0.55

*Continued on next page...*

*Continued from previous page...*

Atom-1	Atom-2	Interatomic distance (Å)	Clash overlap (Å)
1:B:143:ARG:HE	1:B:143:ARG:HA	1.71	0.55
1:B:100:ALA:HA	1:B:103:LEU:HD22	1.89	0.55
1:B:133:VAL:HG12	1:B:393:THR:O	2.06	0.55
1:B:36:ASP:CG	1:B:158:LEU:HB2	2.26	0.55
1:B:92:LEU:HD11	1:B:433:LEU:CD2	2.36	0.55
1:B:92:LEU:HD11	1:B:433:LEU:HD21	1.89	0.55
1:B:110:PRO:HG2	1:B:111:GLN:OE1	2.07	0.55
1:B:140:VAL:HG22	1:B:175:LEU:HB3	1.88	0.55
1:B:319:ALA:HB2	1:B:329:LYS:HZ2	1.70	0.55
1:B:411:LEU:O	1:B:414:ARG:HB3	2.07	0.55
1:B:246:ASP:OD1	1:B:250:LYS:HB2	2.07	0.55
1:B:296:VAL:HG12	1:B:297:MET:N	2.22	0.55
1:B:326:GLU:OE1	1:B:327:LEU:HB2	2.07	0.55
1:B:328:VAL:HG22	1:B:329:LYS:N	2.22	0.55
1:B:89:VAL:HG12	1:B:490:VAL:CB	2.36	0.55
1:B:100:ALA:CA	1:B:103:LEU:HB2	2.35	0.55
1:B:164:ASP:O	1:B:167:THR:HG22	2.06	0.55
1:B:225:LEU:HD21	1:B:329:LYS:HE2	1.89	0.55
1:B:431:ARG:HA	1:B:431:ARG:CZ	2.37	0.55
1:B:22:ILE:HD12	1:B:90:THR:HG22	1.88	0.55
1:B:103:LEU:HA	1:B:106:LYS:HB2	1.89	0.55
1:B:170:ALA:O	1:B:174:VAL:HG13	2.06	0.55
1:B:317:GLU:OE1	1:B:329:LYS:HD3	2.06	0.55
1:B:114:ILE:HD11	1:B:502:LEU:CG	2.36	0.55
1:B:145:ASP:CG	1:B:171:VAL:HB	2.27	0.55
1:B:44:ARG:N	1:B:44:ARG:HD2	2.22	0.54
1:B:147:MET:CE	1:B:168:LYS:HD2	2.37	0.54
1:B:313:VAL:HG13	1:B:352:VAL:CG2	2.35	0.54
1:B:117:TRP:CD2	1:B:499:GLU:CG	2.90	0.54
1:B:140:VAL:HG13	1:B:175:LEU:HD13	1.88	0.54
1:B:147:MET:HE3	1:B:168:LYS:HD2	1.90	0.54
1:B:211:ILE:HD12	1:B:211:ILE:N	2.19	0.54
1:B:402:MET:SD	1:B:453:ARG:HA	2.48	0.54
1:B:141:LYS:CG	1:B:144:GLN:H	2.21	0.54
1:B:244:ARG:HH12	1:B:246:ASP:HA	1.73	0.54
1:B:274:ILE:HG23	1:B:274:ILE:O	2.07	0.54
1:B:455:ALA:O	1:B:458:GLU:HB3	2.06	0.54
1:B:496:GLU:O	1:B:500:VAL:HG13	2.07	0.54
1:B:29:THR:O	1:B:156:SER:HB2	2.08	0.54
1:B:65:ASN:OD1	1:B:66:PRO:HD3	2.06	0.54
1:B:225:LEU:HD22	1:B:329:LYS:CE	2.37	0.54

*Continued on next page...*

*Continued from previous page...*

Atom-1	Atom-2	Interatomic distance (Å)	Clash overlap (Å)
1:B:279:ASN:OD1	1:B:281:GLN:HG2	2.08	0.54
1:B:448:LEU:HD13	1:B:448:LEU:C	2.27	0.54
1:B:106:LYS:HG3	1:B:113:ILE:HD11	1.90	0.54
1:B:275:ASN:C	1:B:296:VAL:HG13	2.28	0.54
1:B:312:LEU:HD11	1:B:356:GLU:CB	2.37	0.54
1:B:324:HIS:HB2	1:B:329:LYS:HE2	1.89	0.54
1:B:100:ALA:HA	1:B:103:LEU:CB	2.38	0.54
1:B:176:ARG:HH22	1:B:201:LEU:HD21	1.73	0.54
1:B:313:VAL:O	1:B:352:VAL:HG23	2.06	0.54
1:B:396:GLY:O	1:B:475:MET:HE3	2.07	0.54
1:B:57:ILE:HG23	1:B:58:LEU:N	2.23	0.54
1:B:117:TRP:HD1	1:B:495:ALA:CA	2.21	0.54
1:B:197:ALA:O	1:B:198:ASP:HB2	2.08	0.54
1:B:245:VAL:CG1	1:B:246:ASP:H	2.21	0.54
1:B:337:GLU:HG3	1:B:339:VAL:CG2	2.38	0.54
1:B:50:VAL:HG22	1:B:375:ARG:HH12	1.73	0.54
1:B:187:HIS:O	1:B:359:THR:HG23	2.07	0.54
1:B:192:LEU:CB	1:B:366:THR:HG21	2.38	0.54
1:B:225:LEU:HD13	1:B:226:ILE:N	2.23	0.54
1:B:482:GLU:OE1	1:B:487:LYS:HE3	2.07	0.54
1:B:59:LYS:HE2	1:B:76:ARG:HE	1.73	0.53
1:B:352:VAL:HG21	1:B:354:LEU:HB3	1.90	0.53
1:B:133:VAL:CG2	1:B:134:ASP:H	2.20	0.53
1:B:191:LYS:HD2	1:B:343:GLU:HG2	1.90	0.53
1:B:20:ILE:HG23	1:B:21:ALA:N	2.22	0.53
1:B:95:GLU:O	1:B:98:ARG:HB2	2.08	0.53
1:B:224:ILE:HG12	1:B:349:PHE:HE1	1.72	0.53
1:B:390:ASP:HB3	1:B:485:GLN:NE2	2.23	0.53
1:B:411:LEU:HD13	1:B:423:MET:HE2	1.89	0.53
1:B:484:PHE:HE2	1:B:488:ARG:CD	2.21	0.53
1:B:485:GLN:HB3	1:B:489:GLN:HE22	1.72	0.53
1:B:110:PRO:HA	1:B:113:ILE:CD1	2.34	0.53
1:B:312:LEU:HD11	1:B:356:GLU:HB3	1.90	0.53
1:B:390:ASP:CB	1:B:485:GLN:HE22	2.21	0.53
1:B:192:LEU:HG	1:B:366:THR:HG21	1.89	0.53
1:B:340:MET:HG2	1:B:345:LYS:CG	2.39	0.53
1:B:367:GLN:O	1:B:370:LEU:HB3	2.08	0.53
1:B:160:THR:HA	1:B:163:LYS:N	2.24	0.53
1:B:211:ILE:CG2	1:B:298:ALA:HB3	2.19	0.53
1:B:291:PHE:CD2	1:B:296:VAL:HG11	2.44	0.53
1:B:126:GLN:O	1:B:130:ASN:HB2	2.09	0.53

*Continued on next page...*

*Continued from previous page...*

Atom-1	Atom-2	Interatomic distance (Å)	Clash overlap (Å)
1:B:448:LEU:HD13	1:B:448:LEU:O	2.08	0.53
1:B:71:LEU:HD23	1:B:71:LEU:O	2.09	0.53
1:B:77:VAL:HG13	1:B:78:GLN:N	2.23	0.53
1:B:163:LYS:HE2	1:B:166:PHE:CB	2.39	0.53
1:B:211:ILE:HG23	1:B:298:ALA:CA	2.38	0.53
1:B:217:LYS:HE2	1:B:217:LYS:CA	2.24	0.53
1:B:366:THR:O	1:B:367:GLN:HB3	2.09	0.53
1:B:163:LYS:HE3	1:B:376:SER:OG	2.09	0.52
1:B:211:ILE:HG23	1:B:298:ALA:H	1.74	0.52
1:B:96:LEU:HD22	1:B:96:LEU:C	2.29	0.52
1:B:134:ASP:CG	1:B:392:ARG:HA	2.29	0.52
1:B:367:GLN:H	1:B:370:LEU:HB3	1.75	0.52
1:B:402:MET:HE2	1:B:402:MET:CA	2.37	0.52
1:B:219:ILE:HD11	1:B:336:ILE:CB	2.38	0.52
1:B:318:ILE:O	1:B:328:VAL:HG23	2.09	0.52
1:B:402:MET:HE3	1:B:453:ARG:HG2	1.90	0.52
1:B:32:PRO:CA	1:B:155:SER:HB3	2.40	0.52
1:B:33:LYS:HB3	1:B:440:ASN:CB	2.38	0.52
1:B:166:PHE:CE2	1:B:198:ASP:HB3	2.44	0.52
1:B:229:THR:HG23	1:B:229:THR:O	2.07	0.52
1:B:33:LYS:HB3	1:B:440:ASN:O	2.09	0.52
1:B:67:ALA:O	1:B:68:ALA:HB2	2.09	0.52
1:B:398:GLY:HA3	1:B:465:LEU:HD23	1.90	0.52
1:B:402:MET:CE	1:B:405:ALA:HB3	2.40	0.52
1:B:484:PHE:CE2	1:B:488:ARG:HD3	2.41	0.52
1:B:32:PRO:HG2	1:B:467:MET:CE	2.40	0.52
1:B:117:TRP:CG	1:B:499:GLU:CG	2.93	0.52
1:B:157:LYS:HB2	1:B:159:LEU:CD2	2.39	0.52
1:B:354:LEU:HD21	1:B:356:GLU:CB	2.20	0.52
1:B:200:TYR:CE2	1:B:363:ARG:CZ	2.93	0.52
1:B:246:ASP:O	1:B:247:SER:CB	2.57	0.52
1:B:284:TYR:O	1:B:287:PRO:HD2	2.10	0.52
1:B:30:LEU:HD22	1:B:436:ILE:HD13	1.91	0.51
1:B:159:LEU:HG	1:B:163:LYS:CG	2.38	0.51
1:B:210:LYS:CD	1:B:213:VAL:HA	2.39	0.51
1:B:258:GLU:HA	1:B:261:LYS:NZ	2.23	0.51
1:B:42:SER:O	1:B:45:ASP:HB2	2.10	0.51
1:B:310:LEU:O	1:B:314:THR:HG22	2.10	0.51
1:B:26:VAL:HG23	1:B:27:LYS:N	2.23	0.51
1:B:210:LYS:HD3	1:B:213:VAL:HA	1.92	0.51
1:B:89:VAL:HG12	1:B:490:VAL:CG2	2.41	0.51

*Continued on next page...*

*Continued from previous page...*

Atom-1	Atom-2	Interatomic distance (Å)	Clash overlap (Å)
1:B:89:VAL:HG11	1:B:490:VAL:HB	1.92	0.51
1:B:114:ILE:O	1:B:114:ILE:HG22	2.09	0.51
1:B:41:SER:O	1:B:45:ASP:HB2	2.10	0.51
1:B:107:LYS:O	1:B:107:LYS:HG3	2.10	0.51
1:B:245:VAL:HG12	1:B:247:SER:O	2.10	0.51
1:B:51:THR:C	1:B:375:ARG:HH11	2.14	0.51
1:B:303:ASP:O	1:B:307:VAL:HG23	2.11	0.51
1:B:27:LYS:HB2	1:B:436:ILE:CD1	2.40	0.51
1:B:51:THR:HG22	1:B:53:ASP:N	2.26	0.51
1:B:231:MET:HG3	1:B:283:ILE:CG1	2.40	0.51
1:B:372:GLU:HG3	1:B:375:ARG:CZ	2.40	0.51
1:B:386:GLN:NE2	1:B:485:GLN:HG2	2.26	0.51
1:B:51:THR:CA	1:B:375:ARG:HH11	2.24	0.51
1:B:224:ILE:N	1:B:224:ILE:HD12	2.26	0.51
1:B:319:ALA:CA	1:B:320:SER:CB	2.88	0.51
1:B:484:PHE:CE2	1:B:488:ARG:CD	2.94	0.51
1:B:29:THR:O	1:B:29:THR:HG22	2.11	0.51
1:B:266:VAL:CA	1:B:290:LEU:HD21	2.41	0.51
1:B:455:ALA:HB2	1:B:472:ILE:CD1	2.41	0.51
1:B:33:LYS:HB3	1:B:440:ASN:C	2.32	0.50
1:B:84:ASP:OD1	1:B:383:VAL:HG22	2.11	0.50
1:B:154:LEU:CG	1:B:163:LYS:HZ2	2.24	0.50
1:B:266:VAL:O	1:B:269:ILE:HG22	2.11	0.50
1:B:145:ASP:OD2	1:B:171:VAL:HG23	2.11	0.50
1:B:146:LEU:HD12	1:B:171:VAL:HG22	1.93	0.50
1:B:219:ILE:HB	1:B:275:ASN:HB3	1.93	0.50
1:B:397:GLY:HA3	1:B:475:MET:HE3	1.94	0.50
1:B:114:ILE:CD1	1:B:117:TRP:CZ3	2.93	0.50
1:B:190:LYS:HB3	1:B:362:LEU:CB	2.36	0.50
1:B:191:LYS:NZ	1:B:346:LEU:HD11	2.26	0.50
1:B:443:TYR:CZ	1:B:470:GLY:HA3	2.46	0.50
1:B:466:ASP:HB3	1:B:469:GLU:CB	2.39	0.50
1:B:227:ALA:CB	1:B:277:PHE:CZ	2.94	0.50
1:B:411:LEU:HB3	1:B:423:MET:HE1	1.93	0.50
1:B:445:SER:O	1:B:448:LEU:HB3	2.12	0.50
1:B:33:LYS:CB	1:B:440:ASN:CB	2.90	0.50
1:B:114:ILE:CA	1:B:117:TRP:CE3	2.94	0.50
1:B:297:MET:HE1	1:B:336:ILE:CG2	2.41	0.50
1:B:499:GLU:O	1:B:503:ARG:HG2	2.12	0.50
1:B:211:ILE:CG1	1:B:298:ALA:N	2.74	0.50
1:B:416:PRO:O	1:B:420:ALA:HB2	2.10	0.50

*Continued on next page...*

*Continued from previous page...*

Atom-1	Atom-2	Interatomic distance (Å)	Clash overlap (Å)
1:B:114:ILE:CG2	1:B:117:TRP:CE3	2.94	0.50
1:B:141:LYS:HE2	1:B:142:PHE:HB2	1.92	0.50
1:B:157:LYS:CB	1:B:159:LEU:CD2	2.88	0.50
1:B:166:PHE:CZ	1:B:198:ASP:CB	2.92	0.50
1:B:500:VAL:O	1:B:503:ARG:HG2	2.11	0.50
1:B:201:LEU:HD13	1:B:201:LEU:C	2.32	0.50
1:B:262:MET:SD	1:B:290:LEU:HD22	2.52	0.50
1:B:312:LEU:O	1:B:312:LEU:HD13	2.12	0.50
1:B:366:THR:HA	1:B:370:LEU:CD2	2.42	0.50
1:B:431:ARG:NH2	1:B:434:PRO:HG2	2.21	0.50
1:B:452:LEU:CD1	1:B:456:HIS:HE1	2.24	0.50
1:B:28:SER:O	1:B:34:GLY:HA2	2.12	0.50
1:B:176:ARG:HH12	1:B:201:LEU:CD2	2.19	0.50
1:B:258:GLU:HB3	1:B:259:LYS:HE2	1.94	0.50
1:B:278:ILE:HG13	1:B:302:ALA:CB	2.41	0.50
1:B:408:VAL:HG23	1:B:427:ALA:CB	2.40	0.50
1:B:22:ILE:CD1	1:B:90:THR:HG22	2.42	0.49
1:B:114:ILE:CD1	1:B:502:LEU:HD22	2.32	0.49
1:B:117:TRP:CD1	1:B:495:ALA:CA	2.94	0.49
1:B:133:VAL:CG1	1:B:484:PHE:CD1	2.95	0.49
1:B:433:LEU:H	1:B:433:LEU:CD1	2.24	0.49
1:B:443:TYR:CD1	1:B:470:GLY:HA2	2.47	0.49
1:B:455:ALA:HB2	1:B:472:ILE:HD11	1.94	0.49
1:B:500:VAL:C	1:B:503:ARG:HG2	2.32	0.49
1:B:106:LYS:HE3	1:B:418:LYS:CE	2.35	0.49
1:B:133:VAL:CG2	1:B:134:ASP:N	2.75	0.49
1:B:224:ILE:HD11	1:B:336:ILE:HD11	1.93	0.49
1:B:318:ILE:O	1:B:320:SER:HB2	2.13	0.49
1:B:415:THR:HB	1:B:416:PRO:HD2	1.94	0.49
1:B:431:ARG:O	1:B:434:PRO:HD2	2.11	0.49
1:B:27:LYS:O	1:B:436:ILE:HD11	2.12	0.49
1:B:57:ILE:HD13	1:B:57:ILE:C	2.33	0.49
1:B:192:LEU:HB3	1:B:366:THR:HG21	1.95	0.49
1:B:299:ILE:HD12	1:B:299:ILE:N	2.28	0.49
1:B:336:ILE:HD11	1:B:349:PHE:CE1	2.48	0.49
1:B:404:MET:HE2	1:B:430:LEU:HD11	1.93	0.49
1:B:149:ILE:HD12	1:B:481:THR:HG23	1.95	0.49
1:B:390:ASP:O	1:B:391:SER:HB3	2.12	0.49
1:B:82:VAL:HG21	1:B:486:VAL:CG1	2.42	0.49
1:B:140:VAL:HG11	1:B:175:LEU:HD13	1.95	0.49
1:B:182:ASN:ND2	1:B:183:LEU:H	2.11	0.49

*Continued on next page...*

*Continued from previous page...*

Atom-1	Atom-2	Interatomic distance (Å)	Clash overlap (Å)
1:B:117:TRP:NE1	1:B:499:GLU:HG3	2.26	0.49
1:B:205:PHE:HE2	1:B:207:LEU:HB2	1.76	0.49
1:B:51:THR:HG23	1:B:375:ARG:CD	2.43	0.49
1:B:280:ARG:O	1:B:281:GLN:HB3	2.13	0.49
1:B:306:GLY:O	1:B:310:LEU:HB2	2.13	0.49
1:B:84:ASP:HA	1:B:85:GLY:C	2.32	0.49
1:B:154:LEU:HD13	1:B:167:THR:OG1	2.13	0.49
1:B:317:GLU:HB3	1:B:329:LYS:CA	2.41	0.49
1:B:269:ILE:CD1	1:B:291:PHE:CE2	2.95	0.49
1:B:427:ALA:O	1:B:430:LEU:HB2	2.13	0.49
1:B:15:SER:CB	1:B:501:ILE:HG21	2.42	0.49
1:B:201:LEU:HD13	1:B:202:ASP:N	2.28	0.49
1:B:354:LEU:HD11	1:B:356:GLU:HB2	1.94	0.49
1:B:9:GLU:H	1:B:9:GLU:CD	2.13	0.48
1:B:94:ALA:HA	1:B:97:LEU:CD1	2.35	0.48
1:B:133:VAL:CB	1:B:393:THR:O	2.61	0.48
1:B:231:MET:SD	1:B:322:PHE:CE1	3.06	0.48
1:B:313:VAL:CG1	1:B:352:VAL:HG21	2.41	0.48
1:B:405:ALA:HA	1:B:408:VAL:HG22	1.94	0.48
1:B:465:LEU:N	1:B:465:LEU:HD22	2.28	0.48
1:B:159:LEU:HD22	1:B:159:LEU:H	1.76	0.48
1:B:163:LYS:HG3	1:B:163:LYS:O	2.14	0.48
1:B:198:ASP:O	1:B:199:SER:HB3	2.14	0.48
1:B:225:LEU:HD11	1:B:324:HIS:CE1	2.48	0.48
1:B:211:ILE:HG12	1:B:298:ALA:H	1.79	0.48
1:B:316:GLY:O	1:B:317:GLU:HB3	2.13	0.48
1:B:386:GLN:HE21	1:B:485:GLN:HG2	1.78	0.48
1:B:52:ASN:HB3	1:B:157:LYS:HD2	1.93	0.48
1:B:157:LYS:HB3	1:B:159:LEU:HD21	1.94	0.48
1:B:211:ILE:HG12	1:B:297:MET:CA	2.43	0.48
1:B:352:VAL:HG22	1:B:354:LEU:N	2.28	0.48
1:B:200:TYR:CD2	1:B:363:ARG:CZ	2.97	0.48
1:B:337:GLU:HG3	1:B:339:VAL:HG23	1.95	0.48
1:B:402:MET:HE2	1:B:405:ALA:HB3	1.95	0.48
1:B:57:ILE:HG23	1:B:58:LEU:CD2	2.34	0.48
1:B:83:GLY:CA	1:B:84:ASP:CB	2.91	0.48
1:B:133:VAL:CG1	1:B:484:PHE:HD1	2.27	0.48
1:B:188:VAL:O	1:B:189:ILE:HG12	2.14	0.48
1:B:291:PHE:CD2	1:B:296:VAL:CG1	2.95	0.48
1:B:393:THR:HB	1:B:481:THR:OG1	2.13	0.48
1:B:405:ALA:HA	1:B:408:VAL:CG2	2.43	0.48

*Continued on next page...*



*Continued from previous page...*

Atom-1	Atom-2	Interatomic distance (Å)	Clash overlap (Å)
1:B:185:ALA:CB	1:B:357:ALA:HB2	2.40	0.48
1:B:202:ASP:O	1:B:358:CYS:HB3	2.14	0.48
1:B:219:ILE:HD12	1:B:222:ALA:HB2	1.96	0.48
1:B:241:SER:O	1:B:243:VAL:CG2	2.32	0.48
1:B:405:ALA:CA	1:B:408:VAL:HG22	2.43	0.48
1:B:33:LYS:HG2	1:B:440:ASN:O	2.14	0.48
1:B:176:ARG:NH1	1:B:358:CYS:HB2	2.29	0.48
1:B:236:ILE:HG23	1:B:238:ILE:H	1.79	0.48
1:B:367:GLN:CD	1:B:369:ILE:HB	2.33	0.48
1:B:390:ASP:HB3	1:B:485:GLN:HE22	1.79	0.48
1:B:23:GLY:C	1:B:26:VAL:HG22	2.35	0.48
1:B:84:ASP:OD1	1:B:85:GLY:HA2	2.13	0.48
1:B:192:LEU:CB	1:B:366:THR:CG2	2.92	0.47
1:B:223:LYS:HD3	1:B:275:ASN:OD1	2.14	0.47
1:B:327:LEU:HD12	1:B:327:LEU:N	2.29	0.47
1:B:27:LYS:HA	1:B:436:ILE:CD1	2.43	0.47
1:B:32:PRO:HG2	1:B:467:MET:HE3	1.96	0.47
1:B:122:LYS:CE	1:B:126:GLN:HE21	2.26	0.47
1:B:500:VAL:HG23	1:B:501:ILE:N	2.29	0.47
1:B:68:ALA:O	1:B:72:VAL:HG23	2.14	0.47
1:B:278:ILE:CG1	1:B:302:ALA:HB3	2.45	0.47
1:B:15:SER:CB	1:B:501:ILE:CG2	2.93	0.47
1:B:190:LYS:NZ	1:B:370:LEU:HD23	2.29	0.47
1:B:263:LYS:HA	1:B:266:VAL:HG12	1.96	0.47
1:B:299:ILE:HG22	1:B:302:ALA:HB2	1.96	0.47
1:B:312:LEU:C	1:B:354:LEU:HD22	2.34	0.47
1:B:390:ASP:HB3	1:B:485:GLN:CD	2.34	0.47
1:B:15:SER:HB3	1:B:501:ILE:CG2	2.42	0.47
1:B:40:LEU:HD23	1:B:47:SER:C	2.35	0.47
1:B:40:LEU:HD13	1:B:41:SER:N	2.29	0.47
1:B:82:VAL:HG21	1:B:486:VAL:HG13	1.95	0.47
1:B:146:LEU:HD11	1:B:150:ALA:CB	2.44	0.47
1:B:157:LYS:HB3	1:B:159:LEU:HD11	1.96	0.47
1:B:211:ILE:HG23	1:B:298:ALA:N	2.29	0.47
1:B:225:LEU:HD22	1:B:329:LYS:HE2	1.96	0.47
1:B:245:VAL:CG1	1:B:247:SER:O	2.62	0.47
1:B:245:VAL:HG13	1:B:246:ASP:H	1.79	0.47
1:B:287:PRO:HB3	1:B:291:PHE:HE1	1.80	0.47
1:B:334:LYS:HB3	1:B:351:GLY:HA3	1.95	0.47
1:B:394:VAL:HG21	1:B:482:GLU:HB2	1.94	0.47
1:B:41:SER:HB3	1:B:45:ASP:HB3	1.96	0.47

*Continued on next page...*

*Continued from previous page...*

Atom-1	Atom-2	Interatomic distance (Å)	Clash overlap (Å)
1:B:161:HIS:CG	1:B:162:HIS:N	2.83	0.47
1:B:163:LYS:CA	1:B:166:PHE:HD1	2.18	0.47
1:B:269:ILE:CG1	1:B:274:ILE:HG12	2.45	0.47
1:B:324:HIS:ND1	1:B:325:PRO:HD3	2.30	0.47
1:B:433:LEU:HA	1:B:436:ILE:HG22	1.97	0.47
1:B:59:LYS:HE2	1:B:76:ARG:NE	2.30	0.47
1:B:99:GLU:O	1:B:103:LEU:HD13	2.15	0.47
1:B:122:LYS:HE3	1:B:126:GLN:HE21	1.80	0.47
1:B:313:VAL:CG1	1:B:352:VAL:CB	2.93	0.47
1:B:465:LEU:HD22	1:B:465:LEU:H	1.80	0.47
1:B:117:TRP:CD1	1:B:495:ALA:O	2.68	0.46
1:B:201:LEU:HD22	1:B:359:THR:O	2.15	0.46
1:B:258:GLU:CD	1:B:284:TYR:HE2	2.17	0.46
1:B:452:LEU:CD2	1:B:465:LEU:HD11	2.19	0.46
1:B:44:ARG:HD2	1:B:44:ARG:H	1.79	0.46
1:B:89:VAL:HG23	1:B:90:THR:N	2.29	0.46
1:B:140:VAL:HG13	1:B:175:LEU:CD1	2.45	0.46
1:B:219:ILE:HG12	1:B:336:ILE:O	2.16	0.46
1:B:281:GLN:N	1:B:301:HIS:HA	2.30	0.46
1:B:33:LYS:HG2	1:B:441:ALA:CA	2.41	0.46
1:B:106:LYS:HE3	1:B:108:ILE:HD12	1.94	0.46
1:B:128:LEU:CD1	1:B:488:ARG:HG2	2.45	0.46
1:B:291:PHE:CE2	1:B:296:VAL:HG11	2.51	0.46
1:B:154:LEU:CD1	1:B:167:THR:CB	2.93	0.46
1:B:231:MET:H	1:B:283:ILE:HA	1.81	0.46
1:B:415:THR:HG1	1:B:420:ALA:HA	1.81	0.46
1:B:483:SER:HB2	1:B:486:VAL:HG13	1.98	0.46
1:B:50:VAL:H	1:B:368:GLN:HE22	1.63	0.46
1:B:89:VAL:HG12	1:B:490:VAL:HG21	1.98	0.46
1:B:89:VAL:CB	1:B:490:VAL:CG2	2.93	0.46
1:B:159:LEU:C	1:B:163:LYS:CB	2.84	0.46
1:B:317:GLU:CA	1:B:329:LYS:CA	2.79	0.46
1:B:100:ALA:HA	1:B:103:LEU:CD2	2.45	0.46
1:B:133:VAL:CB	1:B:393:THR:H	2.06	0.46
1:B:412:ALA:CB	1:B:424:GLU:HB3	2.46	0.46
1:B:455:ALA:CB	1:B:472:ILE:CD1	2.94	0.46
1:B:207:LEU:HB3	1:B:347:ILE:CG2	2.45	0.46
1:B:313:VAL:O	1:B:354:LEU:HB2	2.15	0.46
1:B:405:ALA:O	1:B:408:VAL:HG22	2.16	0.46
1:B:154:LEU:HB3	1:B:160:THR:HG1	1.79	0.46
1:B:171:VAL:CG1	1:B:384:LEU:HD11	2.46	0.46

*Continued on next page...*

*Continued from previous page...*

Atom-1	Atom-2	Interatomic distance (Å)	Clash overlap (Å)
1:B:210:LYS:HE2	1:B:213:VAL:CA	2.46	0.46
1:B:258:GLU:OE1	1:B:261:LYS:HD3	2.15	0.46
1:B:342:GLY:CA	1:B:343:GLU:CB	2.89	0.46
1:B:427:ALA:O	1:B:430:LEU:HD23	2.16	0.46
1:B:99:GLU:OE2	1:B:428:LYS:HE2	2.16	0.45
1:B:128:LEU:HD22	1:B:484:PHE:CZ	2.51	0.45
1:B:219:ILE:O	1:B:219:ILE:HG13	2.14	0.45
1:B:27:LYS:HB2	1:B:436:ILE:HD12	1.97	0.45
1:B:32:PRO:HB2	1:B:467:MET:SD	2.56	0.45
1:B:88:SER:O	1:B:92:LEU:HD13	2.17	0.45
1:B:98:ARG:HD3	1:B:98:ARG:HH11	1.52	0.45
1:B:141:LYS:HE3	1:B:142:PHE:CB	2.44	0.45
1:B:146:LEU:HD12	1:B:171:VAL:CG1	2.42	0.45
1:B:146:LEU:CD2	1:B:147:MET:N	2.80	0.45
1:B:313:VAL:HG13	1:B:352:VAL:CB	2.46	0.45
1:B:317:GLU:N	1:B:330:LEU:HD23	2.31	0.45
1:B:30:LEU:HD13	1:B:436:ILE:CD1	2.45	0.45
1:B:141:LYS:CG	1:B:144:GLN:N	2.80	0.45
1:B:146:LEU:CD1	1:B:171:VAL:CG1	2.94	0.45
1:B:114:ILE:CG2	1:B:499:GLU:HG2	2.47	0.45
1:B:161:HIS:CD2	1:B:162:HIS:H	2.35	0.45
1:B:452:LEU:CD1	1:B:472:ILE:CG2	2.94	0.45
1:B:484:PHE:CE2	1:B:488:ARG:HG3	2.52	0.45
1:B:25:LEU:HD22	1:B:25:LEU:H	1.79	0.45
1:B:100:ALA:C	1:B:103:LEU:HB2	2.36	0.45
1:B:130:ASN:O	1:B:131:SER:HB3	2.17	0.45
1:B:163:LYS:HE2	1:B:166:PHE:HB2	1.94	0.45
1:B:189:ILE:O	1:B:362:LEU:HG	2.16	0.45
1:B:220:GLU:HG2	1:B:335:LEU:CD1	2.43	0.45
1:B:319:ALA:CB	1:B:329:LYS:HE3	2.33	0.45
1:B:322:PHE:CD1	1:B:324:HIS:NE2	2.81	0.45
1:B:370:LEU:O	1:B:373:ALA:HB3	2.17	0.45
1:B:433:LEU:O	1:B:436:ILE:HG22	2.17	0.45
1:B:38:ILE:HB	1:B:48:LEU:HB3	1.98	0.45
1:B:231:MET:O	1:B:284:TYR:HB2	2.16	0.45
1:B:258:GLU:HB3	1:B:259:LYS:CE	2.46	0.45
1:B:484:PHE:CE2	1:B:488:ARG:CG	2.99	0.45
1:B:14:SER:O	1:B:17:ILE:HG22	2.16	0.45
1:B:71:LEU:HD23	1:B:71:LEU:C	2.36	0.45
1:B:152:THR:O	1:B:155:SER:HB2	2.17	0.45
1:B:235:LYS:CB	1:B:235:LYS:HZ2	2.29	0.45

*Continued on next page...*

*Continued from previous page...*

Atom-1	Atom-2	Interatomic distance (Å)	Clash overlap (Å)
1:B:313:VAL:HG12	1:B:352:VAL:HB	1.99	0.45
1:B:391:SER:O	1:B:392:ARG:HG3	2.17	0.45
1:B:463:ALA:HA	1:B:473:GLY:O	2.17	0.45
1:B:160:THR:CG2	1:B:164:ASP:CB	2.93	0.45
1:B:381:LEU:HD13	1:B:381:LEU:O	2.16	0.45
1:B:404:MET:CE	1:B:430:LEU:CD1	2.95	0.45
1:B:33:LYS:CB	1:B:440:ASN:C	2.85	0.45
1:B:89:VAL:CG1	1:B:490:VAL:CG2	2.95	0.45
1:B:98:ARG:HD2	1:B:98:ARG:H	1.80	0.45
1:B:154:LEU:CD2	1:B:167:THR:CB	2.89	0.45
1:B:188:VAL:HG11	1:B:377:LEU:HD23	1.97	0.45
1:B:192:LEU:HA	1:B:366:THR:HG22	1.99	0.45
1:B:216:PRO:HG2	1:B:295:GLY:C	2.37	0.45
1:B:354:LEU:HD11	1:B:356:GLU:CB	2.47	0.45
1:B:364:GLY:HA3	1:B:370:LEU:HD13	1.98	0.45
1:B:478:LEU:CB	1:B:480:ILE:CD1	2.95	0.45
1:B:83:GLY:HA3	1:B:84:ASP:C	2.37	0.44
1:B:332:SER:OG	1:B:349:PHE:HZ	1.99	0.44
1:B:401:GLU:HG2	1:B:433:LEU:CB	2.47	0.44
1:B:441:ALA:HB1	1:B:443:TYR:HD1	1.82	0.44
1:B:51:THR:HG22	1:B:53:ASP:O	2.16	0.44
1:B:146:LEU:CG	1:B:171:VAL:CG1	2.93	0.44
1:B:408:VAL:CG2	1:B:427:ALA:CB	2.95	0.44
1:B:26:VAL:HG23	1:B:91:VAL:CG2	2.46	0.44
1:B:258:GLU:CA	1:B:261:LYS:HZ3	2.30	0.44
1:B:263:LYS:CA	1:B:266:VAL:HG12	2.47	0.44
1:B:274:ILE:HG23	1:B:296:VAL:HG22	1.93	0.44
1:B:317:GLU:OE2	1:B:329:LYS:HE3	2.18	0.44
1:B:408:VAL:O	1:B:411:LEU:HB2	2.17	0.44
1:B:89:VAL:CG1	1:B:490:VAL:CB	2.93	0.44
1:B:159:LEU:CG	1:B:163:LYS:CG	2.94	0.44
1:B:226:ILE:HG12	1:B:278:ILE:CG2	2.47	0.44
1:B:334:LYS:HD3	1:B:334:LYS:O	2.18	0.44
1:B:246:ASP:O	1:B:247:SER:OG	2.30	0.44
1:B:402:MET:CB	1:B:456:HIS:CG	2.98	0.44
1:B:143:ARG:NH2	1:B:147:MET:HE1	2.31	0.44
1:B:316:GLY:N	1:B:330:LEU:HB2	2.32	0.44
1:B:334:LYS:CB	1:B:351:GLY:CA	2.84	0.44
1:B:103:LEU:C	1:B:106:LYS:H	2.20	0.44
1:B:104:ILE:CG1	1:B:105:ALA:N	2.80	0.44
1:B:141:LYS:CG	1:B:144:GLN:CB	2.88	0.44

*Continued on next page...*

*Continued from previous page...*

Atom-1	Atom-2	Interatomic distance (Å)	Clash overlap (Å)
1:B:176:ARG:NH2	1:B:201:LEU:HD21	2.33	0.44
1:B:206:LEU:HD21	1:B:346:LEU:CB	2.47	0.44
1:B:231:MET:HE3	1:B:287:PRO:CB	2.48	0.44
1:B:106:LYS:HE3	1:B:108:ILE:CD1	2.47	0.44
1:B:146:LEU:HD11	1:B:150:ALA:HB2	1.99	0.44
1:B:324:HIS:CA	1:B:328:VAL:HG21	2.33	0.44
1:B:336:ILE:HG12	1:B:349:PHE:CD1	2.53	0.44
1:B:207:LEU:HB3	1:B:347:ILE:HG22	1.99	0.44
1:B:219:ILE:CD1	1:B:222:ALA:HB2	2.48	0.44
1:B:128:LEU:HD22	1:B:484:PHE:HE2	1.80	0.43
1:B:154:LEU:HD22	1:B:164:ASP:HA	2.00	0.43
1:B:231:MET:CE	1:B:265:LYS:CE	2.95	0.43
1:B:339:VAL:CG1	1:B:340:MET:N	2.81	0.43
1:B:19:ALA:HB1	1:B:94:ALA:CA	2.47	0.43
1:B:391:SER:C	1:B:392:ARG:HG3	2.38	0.43
1:B:146:LEU:HB2	1:B:171:VAL:HG22	1.95	0.43
1:B:191:LYS:HE3	1:B:341:ILE:HB	2.00	0.43
1:B:200:TYR:HD2	1:B:363:ARG:NE	2.17	0.43
1:B:206:LEU:HD21	1:B:346:LEU:HB3	1.99	0.43
1:B:211:ILE:CA	1:B:298:ALA:O	2.66	0.43
1:B:362:LEU:HD13	1:B:373:ALA:HB1	2.00	0.43
1:B:96:LEU:HD12	1:B:97:LEU:HD12	1.98	0.43
1:B:189:ILE:CG2	1:B:190:LYS:N	2.80	0.43
1:B:269:ILE:CG2	1:B:270:LEU:N	2.82	0.43
1:B:392:ARG:NH2	1:B:484:PHE:CE2	2.86	0.43
1:B:192:LEU:CA	1:B:366:THR:CG2	2.97	0.43
1:B:210:LYS:NZ	1:B:213:VAL:HG13	2.33	0.43
1:B:226:ILE:O	1:B:319:ALA:CB	2.66	0.43
1:B:313:VAL:CG1	1:B:352:VAL:CG2	2.96	0.43
1:B:352:VAL:CG2	1:B:354:LEU:H	2.30	0.43
1:B:405:ALA:C	1:B:408:VAL:HG22	2.39	0.43
1:B:101:GLU:OE1	1:B:104:ILE:HD13	2.18	0.43
1:B:106:LYS:HD3	1:B:106:LYS:C	2.38	0.43
1:B:191:LYS:HG3	1:B:192:LEU:N	2.34	0.43
1:B:367:GLN:CG	1:B:369:ILE:H	2.14	0.43
1:B:431:ARG:HD3	1:B:449:VAL:HG11	2.00	0.43
1:B:122:LYS:HA	1:B:125:ARG:HG2	1.99	0.43
1:B:139:GLU:CG	1:B:178:LYS:CE	2.96	0.43
1:B:154:LEU:CG	1:B:163:LYS:HG3	2.49	0.43
1:B:174:VAL:HG11	1:B:384:LEU:CB	2.36	0.43
1:B:177:LEU:HD13	1:B:177:LEU:C	2.37	0.43

*Continued on next page...*

*Continued from previous page...*

Atom-1	Atom-2	Interatomic distance (Å)	Clash overlap (Å)
1:B:317:GLU:HA	1:B:328:VAL:O	2.19	0.43
1:B:478:LEU:CB	1:B:480:ILE:HD13	2.49	0.43
1:B:61:ILE:O	1:B:61:ILE:HG23	2.19	0.43
1:B:171:VAL:HG12	1:B:384:LEU:HD11	2.01	0.43
1:B:188:VAL:CG1	1:B:377:LEU:CD2	2.94	0.43
1:B:188:VAL:O	1:B:188:VAL:HG13	2.18	0.43
1:B:190:LYS:HZ2	1:B:370:LEU:HD23	1.83	0.43
1:B:205:PHE:CE2	1:B:207:LEU:HB2	2.53	0.43
1:B:219:ILE:HD11	1:B:336:ILE:CG1	2.49	0.43
1:B:359:THR:CG2	1:B:360:ILE:N	2.82	0.43
1:B:369:ILE:O	1:B:372:GLU:CB	2.66	0.43
1:B:97:LEU:HD12	1:B:97:LEU:N	2.34	0.43
1:B:133:VAL:HA	1:B:393:THR:C	2.39	0.43
1:B:196:LEU:HD13	1:B:196:LEU:C	2.39	0.43
1:B:226:ILE:HB	1:B:317:GLU:OE2	2.18	0.43
1:B:296:VAL:CG1	1:B:297:MET:N	2.82	0.43
1:B:415:THR:CG2	1:B:423:MET:SD	3.07	0.43
1:B:48:LEU:N	1:B:48:LEU:CD1	2.81	0.42
1:B:57:ILE:CG2	1:B:58:LEU:N	2.82	0.42
1:B:114:ILE:C	1:B:116:GLY:N	2.70	0.42
1:B:159:LEU:CD2	1:B:160:THR:N	2.82	0.42
1:B:367:GLN:HG2	1:B:368:GLN:N	2.34	0.42
1:B:412:ALA:HB2	1:B:424:GLU:N	2.34	0.42
1:B:464:GLY:HA3	1:B:475:MET:HE3	2.01	0.42
1:B:475:MET:HG3	1:B:480:ILE:O	2.19	0.42
1:B:89:VAL:CG2	1:B:90:THR:N	2.82	0.42
1:B:149:ILE:HA	1:B:152:THR:HG22	1.99	0.42
1:B:203:GLU:CD	1:B:350:SER:HB2	2.39	0.42
1:B:280:ARG:CG	1:B:304:PHE:N	2.82	0.42
1:B:372:GLU:HG3	1:B:375:ARG:HE	1.84	0.42
1:B:22:ILE:HG13	1:B:23:GLY:N	2.33	0.42
1:B:101:GLU:OE2	1:B:104:ILE:HG12	2.19	0.42
1:B:305:VAL:CG1	1:B:306:GLY:N	2.82	0.42
1:B:485:GLN:HE21	1:B:488:ARG:HH21	1.68	0.42
1:B:486:VAL:CG2	1:B:487:LYS:N	2.81	0.42
1:B:122:LYS:HE3	1:B:125:ARG:NH1	2.35	0.42
1:B:191:LYS:N	1:B:362:LEU:O	2.52	0.42
1:B:232:ASP:HA	1:B:284:TYR:CD1	2.54	0.42
1:B:261:LYS:HD2	1:B:261:LYS:H	1.85	0.42
1:B:33:LYS:CD	1:B:467:MET:HB3	2.47	0.42
1:B:97:LEU:HD12	1:B:97:LEU:H	1.85	0.42

*Continued on next page...*

*Continued from previous page...*

Atom-1	Atom-2	Interatomic distance (Å)	Clash overlap (Å)
1:B:163:LYS:CE	1:B:166:PHE:CB	2.94	0.42
1:B:19:ALA:HB1	1:B:94:ALA:HA	2.02	0.42
1:B:22:ILE:CD1	1:B:90:THR:CG2	2.94	0.42
1:B:160:THR:CB	1:B:163:LYS:HB3	2.49	0.42
1:B:219:ILE:CD1	1:B:222:ALA:CB	2.95	0.42
1:B:325:PRO:O	1:B:326:GLU:HG3	2.19	0.42
1:B:452:LEU:CD1	1:B:456:HIS:CE1	3.02	0.42
1:B:25:LEU:N	1:B:25:LEU:CD2	2.83	0.42
1:B:149:ILE:CG2	1:B:150:ALA:N	2.83	0.42
1:B:223:LYS:CG	1:B:272:HIS:CD2	2.96	0.42
1:B:259:LYS:HE2	1:B:259:LYS:H	1.80	0.42
1:B:346:LEU:N	1:B:346:LEU:CD1	2.83	0.42
1:B:451:GLN:HE22	1:B:471:THR:HA	1.83	0.42
1:B:269:ILE:CD1	1:B:291:PHE:CZ	3.02	0.42
1:B:487:LYS:HA	1:B:487:LYS:CE	2.35	0.42
1:B:33:LYS:HD2	1:B:467:MET:CG	2.49	0.42
1:B:96:LEU:HD13	1:B:96:LEU:C	2.40	0.42
1:B:139:GLU:CA	1:B:140:VAL:C	2.88	0.42
1:B:146:LEU:HD23	1:B:148:ASN:N	2.33	0.42
1:B:147:MET:CE	1:B:168:LYS:CE	2.93	0.42
1:B:152:THR:HG23	1:B:153:THR:N	2.35	0.42
1:B:157:LYS:HB3	1:B:159:LEU:CD2	2.50	0.42
1:B:190:LYS:HA	1:B:362:LEU:CA	2.50	0.42
1:B:236:ILE:HG12	1:B:237:LYS:N	2.32	0.42
1:B:314:THR:CG2	1:B:315:GLY:N	2.82	0.42
1:B:317:GLU:HB3	1:B:329:LYS:CD	2.31	0.42
1:B:402:MET:HG3	1:B:456:HIS:ND1	2.34	0.42
1:B:481:THR:HG23	1:B:481:THR:O	2.19	0.42
1:B:500:VAL:CG2	1:B:501:ILE:N	2.82	0.42
1:B:61:ILE:CG1	1:B:63:VAL:CG2	2.94	0.42
1:B:122:LYS:HE3	1:B:125:ARG:HH11	1.84	0.42
1:B:153:THR:O	1:B:157:LYS:HG2	2.19	0.42
1:B:154:LEU:HG	1:B:163:LYS:CG	2.50	0.42
1:B:237:LYS:C	1:B:237:LYS:HD3	2.40	0.42
1:B:253:GLU:O	1:B:256:HIS:HB3	2.19	0.42
1:B:336:ILE:HD11	1:B:349:PHE:HE1	1.85	0.42
1:B:443:TYR:CE2	1:B:470:GLY:HA3	2.55	0.42
1:B:20:ILE:CG2	1:B:21:ALA:N	2.83	0.41
1:B:79:ASP:CA	1:B:83:GLY:O	2.68	0.41
1:B:94:ALA:C	1:B:97:LEU:HD13	2.40	0.41
1:B:143:ARG:HH12	1:B:147:MET:CE	2.33	0.41

*Continued on next page...*

*Continued from previous page...*

Atom-1	Atom-2	Interatomic distance (Å)	Clash overlap (Å)
1:B:163:LYS:HZ3	1:B:167:THR:N	2.18	0.41
1:B:226:ILE:HA	1:B:278:ILE:CG2	2.48	0.41
1:B:297:MET:SD	1:B:347:ILE:CD1	3.09	0.41
1:B:33:LYS:CG	1:B:441:ALA:HA	2.42	0.41
1:B:118:ARG:HA	1:B:121:THR:OG1	2.20	0.41
1:B:189:ILE:HG22	1:B:190:LYS:O	2.20	0.41
1:B:223:LYS:CG	1:B:272:HIS:NE2	2.82	0.41
1:B:231:MET:CB	1:B:265:LYS:HZ3	2.23	0.41
1:B:313:VAL:CG2	1:B:357:ALA:HB3	2.47	0.41
1:B:369:ILE:O	1:B:369:ILE:HG22	2.19	0.41
1:B:443:TYR:CZ	1:B:470:GLY:CA	3.03	0.41
1:B:466:ASP:CG	1:B:469:GLU:H	2.24	0.41
1:B:70:VAL:CG2	1:B:71:LEU:N	2.83	0.41
1:B:304:PHE:CE2	1:B:308:GLU:CG	3.03	0.41
1:B:25:LEU:H	1:B:25:LEU:CD2	2.33	0.41
1:B:59:LYS:CE	1:B:76:ARG:CB	2.94	0.41
1:B:106:LYS:HE3	1:B:108:ILE:HB	2.01	0.41
1:B:174:VAL:CG2	1:B:175:LEU:N	2.83	0.41
1:B:235:LYS:O	1:B:236:ILE:CB	2.68	0.41
1:B:327:LEU:HD12	1:B:327:LEU:H	1.86	0.41
1:B:182:ASN:CG	1:B:183:LEU:H	2.24	0.41
1:B:183:LEU:C	1:B:184:GLU:HG3	2.41	0.41
1:B:231:MET:HE3	1:B:265:LYS:HZ3	1.84	0.41
1:B:246:ASP:OD1	1:B:246:ASP:O	2.37	0.41
1:B:321:THR:O	1:B:323:ASP:N	2.54	0.41
1:B:106:LYS:CE	1:B:418:LYS:HE2	2.40	0.41
1:B:157:LYS:HB3	1:B:159:LEU:CD1	2.51	0.41
1:B:224:ILE:CG1	1:B:349:PHE:HE1	2.34	0.41
1:B:269:ILE:HG23	1:B:270:LEU:N	2.36	0.41
1:B:404:MET:HE2	1:B:430:LEU:HD12	2.02	0.41
1:B:26:VAL:CG2	1:B:27:LYS:N	2.83	0.41
1:B:93:ALA:O	1:B:97:LEU:HD12	2.21	0.41
1:B:117:TRP:CD1	1:B:495:ALA:CB	2.94	0.41
1:B:117:TRP:HB3	1:B:499:GLU:OE1	2.21	0.41
1:B:139:GLU:HG2	1:B:140:VAL:HA	2.02	0.41
1:B:151:GLY:HA2	1:B:167:THR:HG21	2.02	0.41
1:B:226:ILE:O	1:B:319:ALA:HB3	2.21	0.41
1:B:231:MET:CE	1:B:265:LYS:CD	2.94	0.41
1:B:265:LYS:HZ3	1:B:287:PRO:HG2	1.86	0.41
1:B:372:GLU:O	1:B:375:ARG:HB3	2.21	0.41
1:B:436:ILE:CG2	1:B:437:ILE:N	2.83	0.41

*Continued on next page...*



*Continued from previous page...*

Atom-1	Atom-2	Interatomic distance (Å)	Clash overlap (Å)
1:B:50:VAL:HG13	1:B:375:ARG:HH22	1.83	0.41
1:B:236:ILE:HG23	1:B:238:ILE:O	2.16	0.41
1:B:268:ARG:HA	1:B:271:LYS:HE2	2.03	0.41
1:B:271:LYS:HG3	1:B:272:HIS:N	2.35	0.41
1:B:395:TYR:O	1:B:399:CYS:HB2	2.20	0.41
1:B:443:TYR:CE1	1:B:470:GLY:CA	3.01	0.41
1:B:17:ILE:HG23	1:B:18:GLY:N	2.34	0.40
1:B:51:THR:CA	1:B:375:ARG:NH1	2.84	0.40
1:B:139:GLU:HG3	1:B:178:LYS:NZ	2.37	0.40
1:B:278:ILE:CG1	1:B:302:ALA:CB	2.99	0.40
1:B:69:LYS:O	1:B:72:VAL:HB	2.21	0.40
1:B:78:GLN:OE1	1:B:78:GLN:HA	2.20	0.40
1:B:119:GLU:HB3	1:B:423:MET:HG3	2.04	0.40
1:B:149:ILE:HG23	1:B:150:ALA:N	2.36	0.40
1:B:207:LEU:HD22	1:B:208:ASP:H	1.85	0.40
1:B:216:PRO:HD2	1:B:296:VAL:O	2.21	0.40
1:B:221:ASN:HA	1:B:333:CYS:CB	2.26	0.40
1:B:226:ILE:HG12	1:B:278:ILE:HG21	2.03	0.40
1:B:266:VAL:HG13	1:B:267:GLU:N	2.35	0.40
1:B:402:MET:SD	1:B:456:HIS:HB2	2.61	0.40
1:B:415:THR:HA	1:B:416:PRO:HD3	1.83	0.40
1:B:431:ARG:HD3	1:B:449:VAL:CG1	2.51	0.40
1:B:41:SER:CB	1:B:45:ASP:CB	2.96	0.40
1:B:154:LEU:CG	1:B:167:THR:HB	2.51	0.40
1:B:324:HIS:O	1:B:328:VAL:CG2	2.69	0.40
1:B:117:TRP:CG	1:B:499:GLU:CD	2.95	0.40
1:B:449:VAL:HG12	1:B:453:ARG:NE	2.37	0.40
1:B:128:LEU:HD22	1:B:488:ARG:CG	2.50	0.40
1:B:140:VAL:CG1	1:B:141:LYS:N	2.82	0.40
1:B:191:LYS:HZ1	1:B:346:LEU:HD11	1.86	0.40
1:B:401:GLU:HG2	1:B:433:LEU:HB2	2.03	0.40
1:B:415:THR:HB	1:B:416:PRO:CD	2.52	0.40
1:B:455:ALA:CB	1:B:472:ILE:HD12	2.52	0.40

There are no symmetry-related clashes.

## 5.3 Torsion angles [i](#)

### 5.3.1 Protein backbone [i](#)

In the following table, the Percentiles column shows the percent Ramachandran outliers of the chain as a percentile score with respect to all PDB entries followed by that with respect to all EM entries.

The Analysed column shows the number of residues for which the backbone conformation was analysed, and the total number of residues.

Mol	Chain	Analysed	Favoured	Allowed	Outliers	Percentiles
1	B	511/513 (100%)	457 (89%)	32 (6%)	22 (4%)	<b>2</b> <b>25</b>

All (22) Ramachandran outliers are listed below:

Mol	Chain	Res	Type
1	B	68	ALA
1	B	142	PHE
1	B	215	GLN
1	B	234	ASP
1	B	236	ILE
1	B	274	ILE
1	B	281	GLN
1	B	317	GLU
1	B	343	GLU
1	B	366	THR
1	B	367	GLN
1	B	82	VAL
1	B	141	LYS
1	B	182	ASN
1	B	108	ILE
1	B	320	SER
1	B	131	SER
1	B	139	GLU
1	B	247	SER
1	B	335	LEU
1	B	88	SER
1	B	238	ILE

### 5.3.2 Protein sidechains [i](#)

In the following table, the Percentiles column shows the percent sidechain outliers of the chain as a percentile score with respect to all PDB entries followed by that with respect to all EM entries.

The Analysed column shows the number of residues for which the sidechain conformation was analysed, and the total number of residues.

Mol	Chain	Analysed	Rotameric	Outliers	Percentiles	
1	B	409/409 (100%)	379 (93%)	30 (7%)	14	42

All (30) residues with a non-rotameric sidechain are listed below:

Mol	Chain	Res	Type
1	B	33	LYS
1	B	36	ASP
1	B	57	ILE
1	B	84	ASP
1	B	96	LEU
1	B	98	ARG
1	B	129	LEU
1	B	140	VAL
1	B	141	LYS
1	B	146	LEU
1	B	159	LEU
1	B	164	ASP
1	B	178	LYS
1	B	190	LYS
1	B	203	GLU
1	B	211	ILE
1	B	235	LYS
1	B	244	ARG
1	B	250	LYS
1	B	263	LYS
1	B	268	ARG
1	B	280	ARG
1	B	282	LEU
1	B	303	ASP
1	B	310	LEU
1	B	328	VAL
1	B	330	LEU
1	B	352	VAL
1	B	402	MET
1	B	431	ARG

Sometimes sidechains can be flipped to improve hydrogen bonding and reduce clashes. All (9) such sidechains are listed below:

Mol	Chain	Res	Type
1	B	126	GLN
1	B	182	ASN
1	B	272	HIS
1	B	368	GLN
1	B	386	GLN
1	B	410	GLN
1	B	451	GLN
1	B	485	GLN
1	B	489	GLN

### 5.3.3 RNA [i](#)

There are no RNA molecules in this entry.

### 5.4 Non-standard residues in protein, DNA, RNA chains [i](#)

There are no non-standard protein/DNA/RNA residues in this entry.

### 5.5 Carbohydrates [i](#)

There are no monosaccharides in this entry.

### 5.6 Ligand geometry [i](#)

There are no ligands in this entry.

### 5.7 Other polymers [i](#)

There are no such residues in this entry.

### 5.8 Polymer linkage issues [i](#)

There are no chain breaks in this entry.

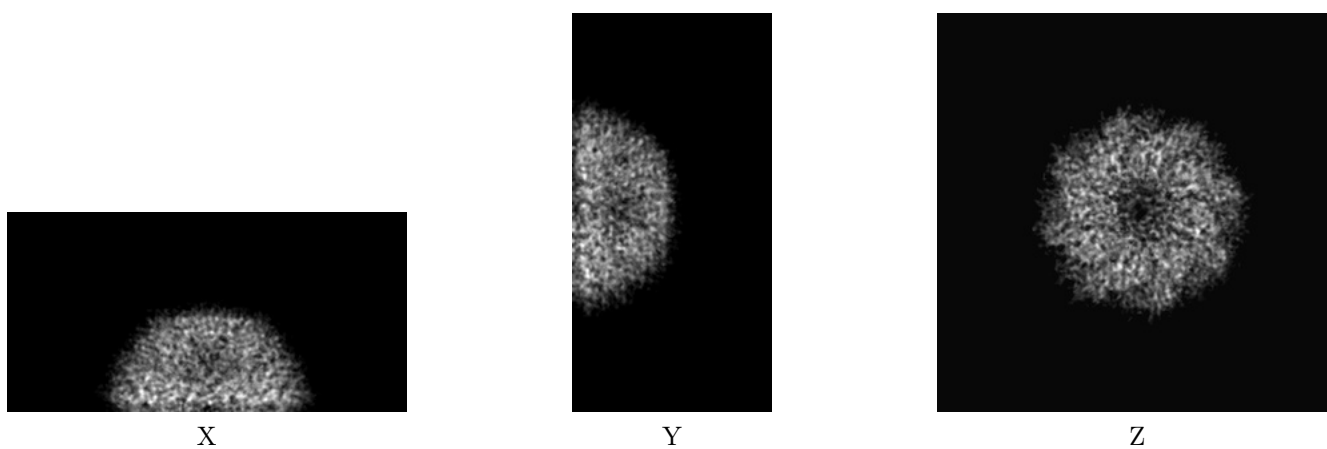
## 6 Map visualisation [i](#)

This section contains visualisations of the EMDB entry EMD-5148. These allow visual inspection of the internal detail of the map and identification of artifacts.

No raw map or half-maps were deposited for this entry and therefore no images, graphs, etc. pertaining to the raw map can be shown.

### 6.1 Orthogonal projections [i](#)

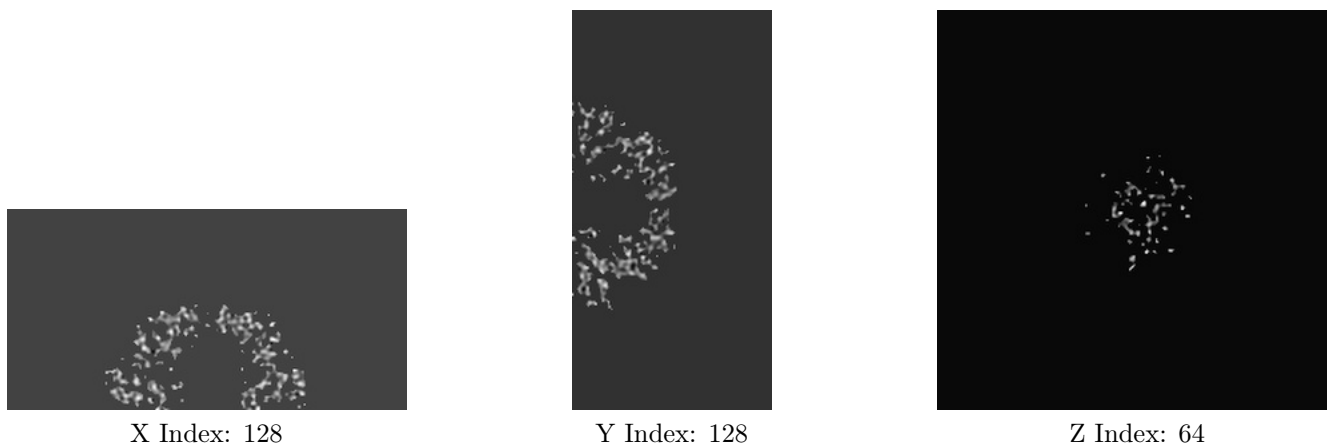
#### 6.1.1 Primary map



The images above show the map projected in three orthogonal directions.

### 6.2 Central slices [i](#)

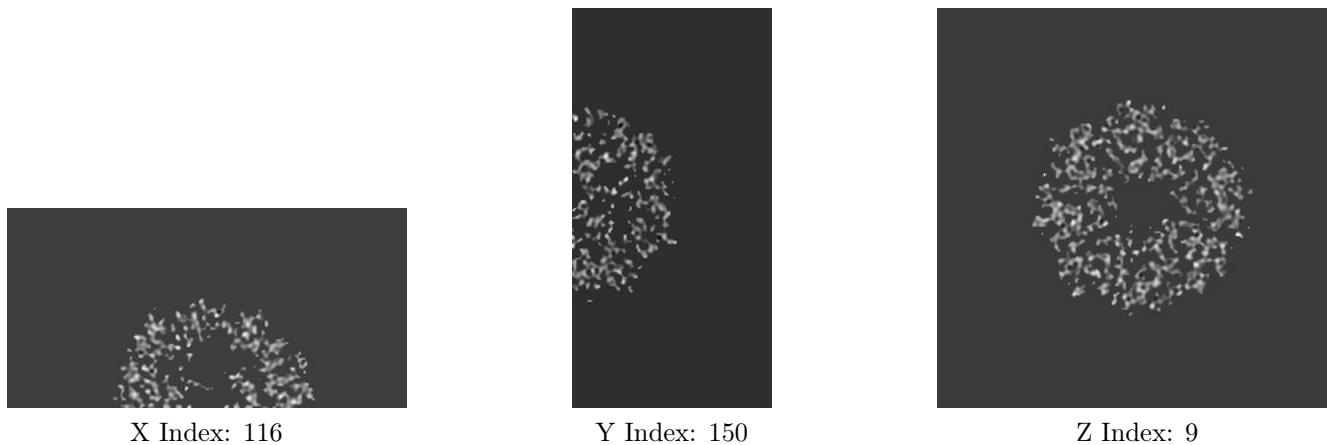
#### 6.2.1 Primary map



The images above show central slices of the map in three orthogonal directions.

## 6.3 Largest variance slices [i](#)

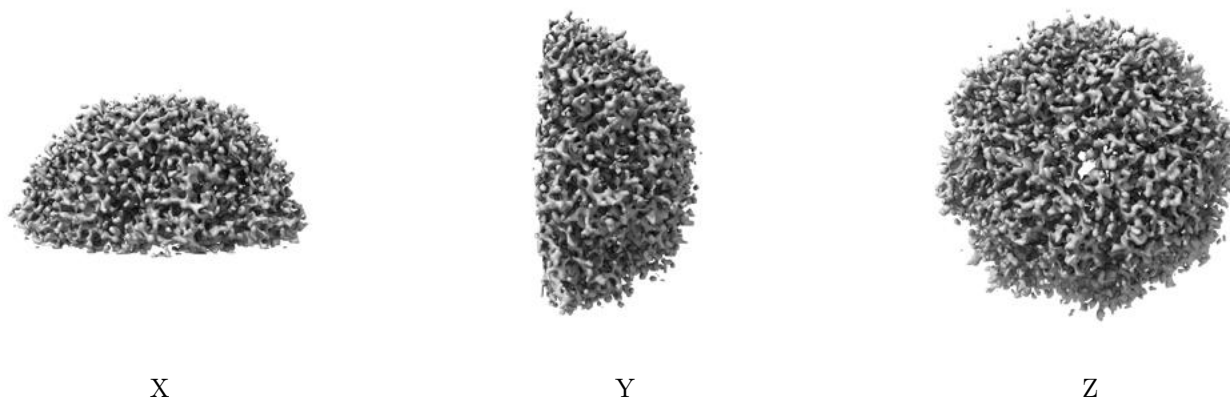
### 6.3.1 Primary map



The images above show the largest variance slices of the map in three orthogonal directions.

## 6.4 Orthogonal surface views [i](#)

### 6.4.1 Primary map



The images above show the 3D surface view of the map at the recommended contour level 1.5. These images, in conjunction with the slice images, may facilitate assessment of whether an appropriate contour level has been provided.

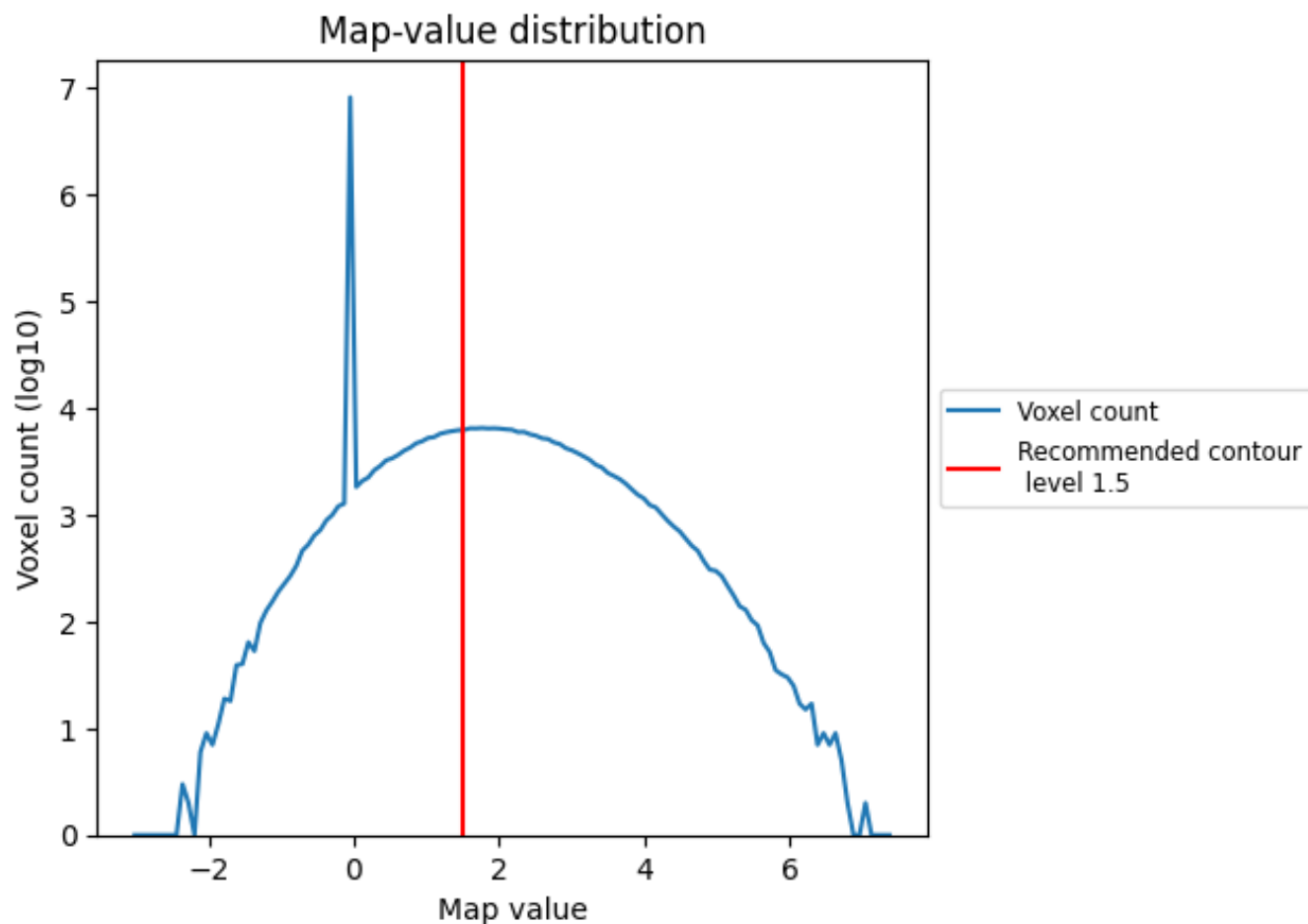
## 6.5 Mask visualisation

This section was not generated. No masks/segmentation were deposited.

## 7 Map analysis [i](#)

This section contains the results of statistical analysis of the map.

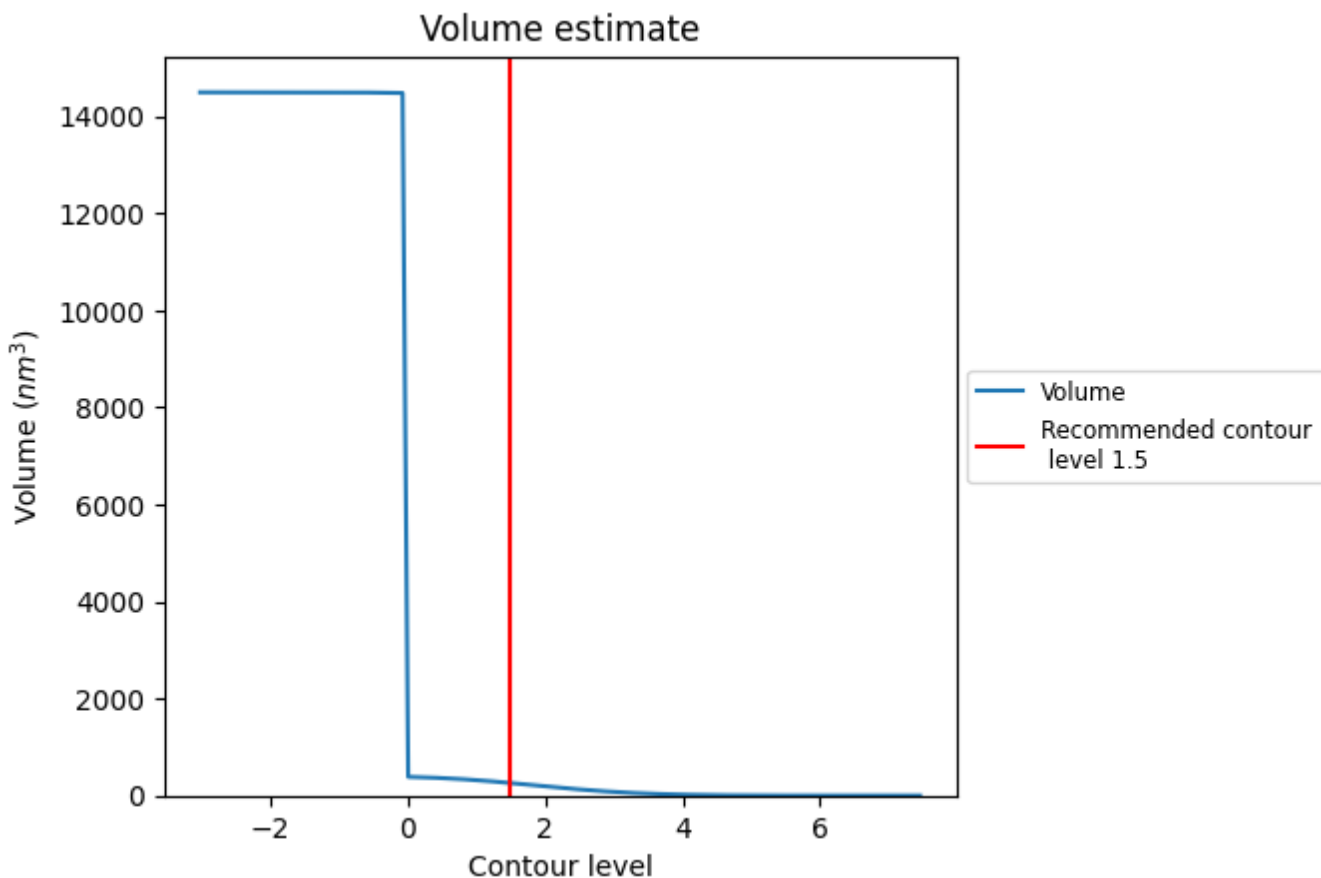
### 7.1 Map-value distribution [i](#)



The map-value distribution is plotted in 128 intervals along the x-axis. The y-axis is logarithmic. A spike in this graph at zero usually indicates that the volume has been masked.



## 7.2 Volume estimate [i](#)



The volume at the recommended contour level is 258 nm<sup>3</sup>; this corresponds to an approximate mass of 233 kDa.

The volume estimate graph shows how the enclosed volume varies with the contour level. The recommended contour level is shown as a vertical line and the intersection between the line and the curve gives the volume of the enclosed surface at the given level.

## 7.3 Rotationally averaged power spectrum [i](#)

This section was not generated. The rotationally averaged power spectrum is only generated for cubic maps.

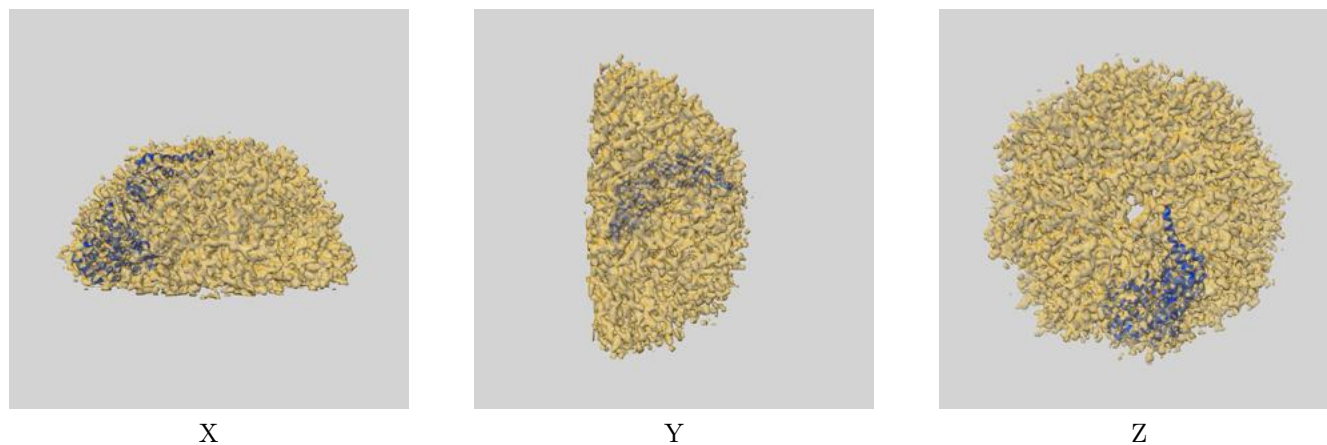
## 8 Fourier-Shell correlation

This section was not generated. No FSC curve or half-maps provided.

## 9 Map-model fit [i](#)

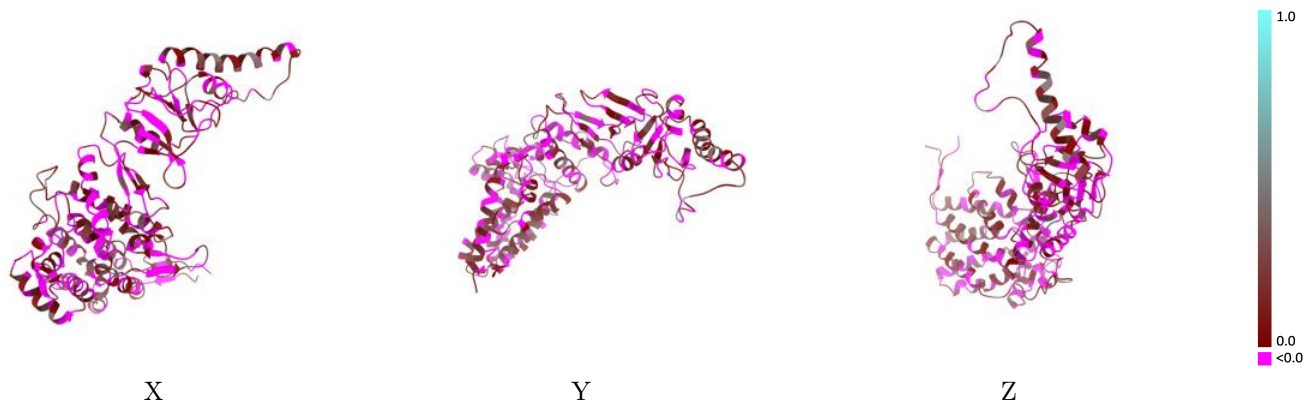
This section contains information regarding the fit between EMDB map EMD-5148 and PDB model 3KTT. Per-residue inclusion information can be found in section 3 on page 4.

### 9.1 Map-model overlay [i](#)



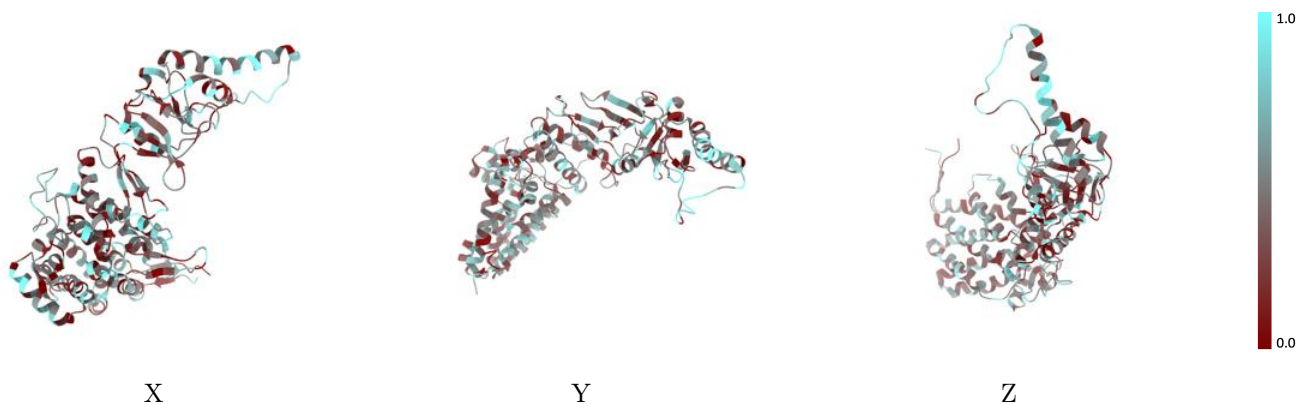
The images above show the 3D surface view of the map at the recommended contour level 1.5 at 50% transparency in yellow overlaid with a ribbon representation of the model coloured in blue. These images allow for the visual assessment of the quality of fit between the atomic model and the map.

## 9.2 Q-score mapped to coordinate model [\(i\)](#)



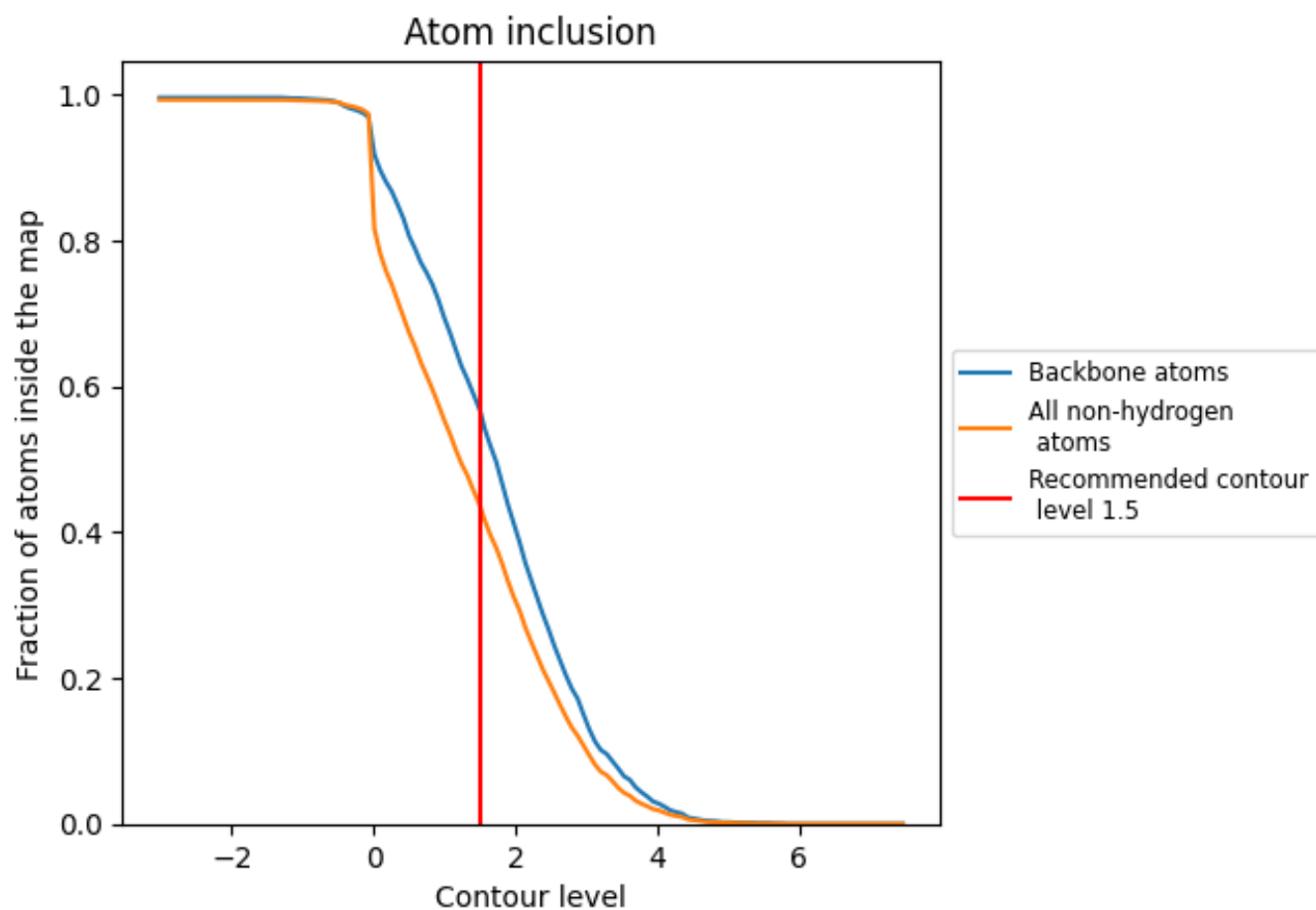
The images above show the model with each residue coloured according to its Q-score. This shows their resolvability in the map with higher Q-score values reflecting better resolvability. Please note: Q-score is calculating the resolvability of atoms, and thus high values are only expected at resolutions at which atoms can be resolved. Low Q-score values may therefore be expected for many entries.

## 9.3 Atom inclusion mapped to coordinate model [\(i\)](#)



The images above show the model with each residue coloured according to its atom inclusion. This shows to what extent they are inside the map at the recommended contour level (1.5).





## 9.4 Atom inclusion [i](#)



At the recommended contour level, 57% of all backbone atoms, 44% of all non-hydrogen atoms, are inside the map.

## 9.5 Map-model fit summary [i](#)

The table lists the average atom inclusion at the recommended contour level (1.5) and Q-score for the entire model and for each chain.

Chain	Atom inclusion	Q-score
All	 0.4358	 0.0450
B	 0.4358	 0.0450

