



Full wwPDB X-ray Structure Validation Report ⓘ

Feb 3, 2024 – 10:21 AM EST

PDB ID : 1KRU
Title : Galactoside Acetyltransferase in Complex with IPTG and Coenzyme A
Authors : Wang, X.-G.; Olsen, L.R.; Roderick, S.L.
Deposited on : 2002-01-10
Resolution : 2.80 Å(reported)

This is a Full wwPDB X-ray Structure Validation Report for a publicly released PDB entry.

We welcome your comments at validation@mail.wwpdb.org

A user guide is available at

<https://www.wwpdb.org/validation/2017/XrayValidationReportHelp>

with specific help available everywhere you see the ⓘ symbol.

The types of validation reports are described at

<http://www.wwpdb.org/validation/2017/FAQs#types>.

The following versions of software and data (see [references ⓘ](#)) were used in the production of this report:

MolProbity : 4.02b-467
Mogul : 1.8.5 (274361), CSD as541be (2020)
Xtrriage (Phenix) : **NOT EXECUTED**
EDS : **NOT EXECUTED**
buster-report : 1.1.7 (2018)
Percentile statistics : 20191225.v01 (using entries in the PDB archive December 25th 2019)
Ideal geometry (proteins) : Engh & Huber (2001)
Ideal geometry (DNA, RNA) : Parkinson et al. (1996)
Validation Pipeline (wwPDB-VP) : 2.36

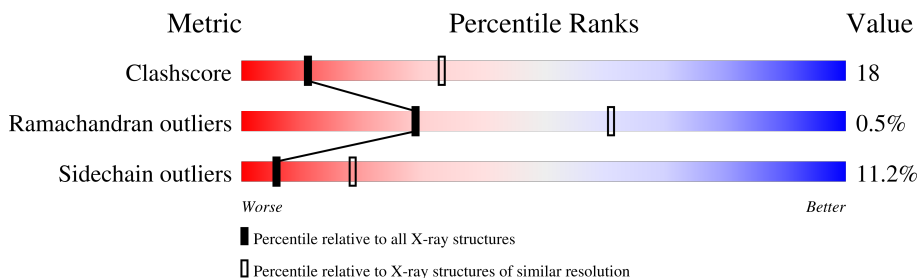
1 Overall quality at a glance

The following experimental techniques were used to determine the structure:

X-RAY DIFFRACTION

The reported resolution of this entry is 2.80 Å.

Percentile scores (ranging between 0-100) for global validation metrics of the entry are shown in the following graphic. The table shows the number of entries on which the scores are based.



Metric	Whole archive (#Entries)	Similar resolution (#Entries, resolution range(Å))
Clashscore	141614	3569 (2.80-2.80)
Ramachandran outliers	138981	3498 (2.80-2.80)
Sidechain outliers	138945	3500 (2.80-2.80)

The table below summarises the geometric issues observed across the polymeric chains and their fit to the electron density. The red, orange, yellow and green segments of the lower bar indicate the fraction of residues that contain outliers for ≥ 3 , 2, 1 and 0 types of geometric quality criteria respectively. A grey segment represents the fraction of residues that are not modelled. The numeric value for each fraction is indicated below the corresponding segment, with a dot representing fractions $\leq 5\%$

Note EDS was not executed.

Mol	Chain	Length	Quality of chain
1	A	203	
1	B	203	
1	C	203	

2 Entry composition [i](#)

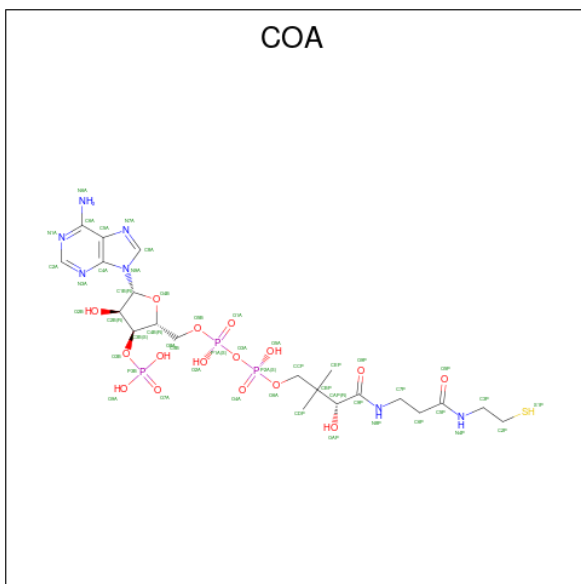
There are 4 unique types of molecules in this entry. The entry contains 5084 atoms, of which 0 are hydrogens and 0 are deuteriums.

In the tables below, the ZeroOcc column contains the number of atoms modelled with zero occupancy, the AltConf column contains the number of residues with at least one atom in alternate conformation and the Trace column contains the number of residues modelled with at most 2 atoms.

- Molecule 1 is a protein called GALACTOSIDE O-ACETYLTRANSFERASE.

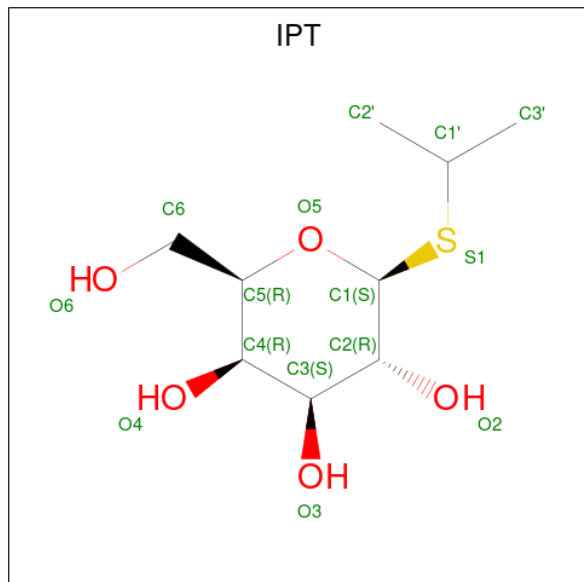
Mol	Chain	Residues	Atoms					ZeroOcc	AltConf	Trace
			Total	C	N	O	S			
1	A	201	Total	C	N	O	S	0	0	0
			1585	1007	274	296	8			
1	B	201	Total	C	N	O	S	0	0	0
			1585	1007	274	296	8			
1	C	201	Total	C	N	O	S	0	0	0
			1585	1007	274	296	8			

- Molecule 2 is COENZYME A (three-letter code: COA) (formula: C₂₁H₃₆N₇O₁₆P₃S).



Mol	Chain	Residues	Atoms					ZeroOcc	AltConf	
			Total	C	N	O	P			S
2	A	1	Total	C	N	O	P	S	0	0
			48	21	7	16	3	1		
2	B	1	Total	C	N	O	P	S	0	0
			48	21	7	16	3	1		
2	C	1	Total	C	N	O	P	S	0	0
			48	21	7	16	3	1		

- Molecule 3 is 1-methylethyl 1-thio-beta-D-galactopyranoside (three-letter code: IPT) (formula: C₉H₁₈O₅S).



Mol	Chain	Residues	Atoms	ZeroOcc	AltConf
3	A	1	Total C O S 15 9 5 1	0	0
3	A	1	Total C O S 15 9 5 1	0	0
3	A	1	Total C O S 15 9 5 1	0	0
3	B	1	Total C O S 15 9 5 1	0	0
3	B	1	Total C O S 15 9 5 1	0	0
3	C	1	Total C O S 15 9 5 1	0	0

- Molecule 4 is water.

Mol	Chain	Residues	Atoms	ZeroOcc	AltConf
4	A	32	Total O 32 32	0	0
4	B	29	Total O 29 29	0	0
4	C	34	Total O 34 34	0	0

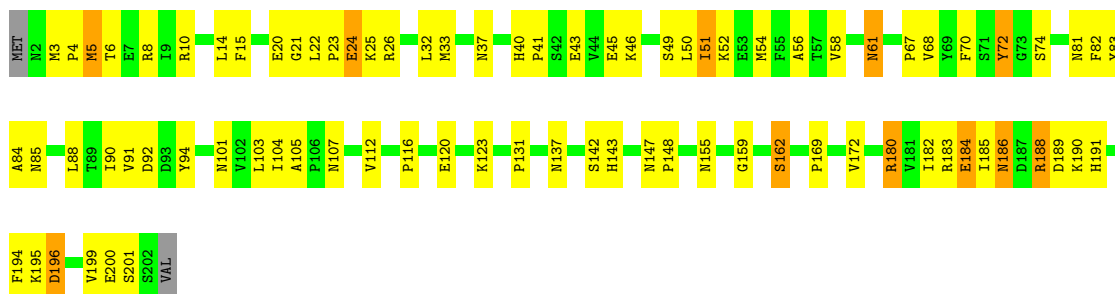
3 Residue-property plots

These plots are drawn for all protein, RNA, DNA and oligosaccharide chains in the entry. The first graphic for a chain summarises the proportions of the various outlier classes displayed in the second graphic. The second graphic shows the sequence view annotated by issues in geometry. Residues are color-coded according to the number of geometric quality criteria for which they contain at least one outlier: green = 0, yellow = 1, orange = 2 and red = 3 or more. Stretches of 2 or more consecutive residues without any outlier are shown as a green connector. Residues present in the sample, but not in the model, are shown in grey.

Note EDS was not executed.

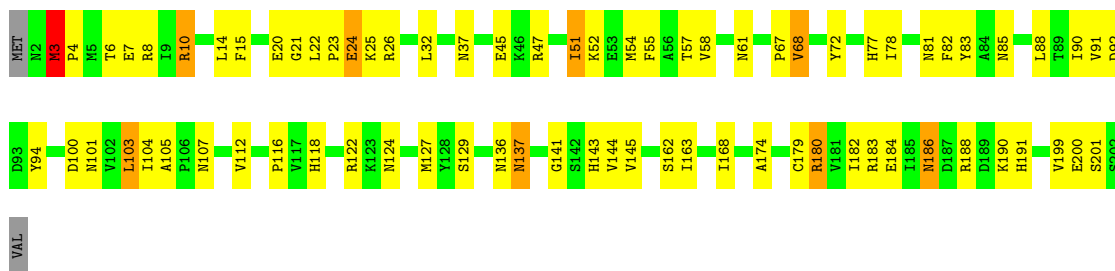
- Molecule 1: GALACTOSIDE O-ACETYLTRANSFERASE

Chain A: 



- Molecule 1: GALACTOSIDE O-ACETYLTRANSFERASE

Chain B: 



- Molecule 1: GALACTOSIDE O-ACETYLTRANSFERASE

Chain C: 



4 Data and refinement statistics

Xtrriage (Phenix) and EDS were not executed - this section is therefore incomplete.

Property	Value	Source
Space group	C 2 2 21	Depositor
Cell constants a, b, c, α , β , γ	66.10Å 183.80Å 121.80Å 90.00° 90.00° 90.00°	Depositor
Resolution (Å)	30.00 – 2.80	Depositor
% Data completeness (in resolution range)	92.2 (30.00-2.80)	Depositor
R_{merge}	0.09	Depositor
R_{sym}	(Not available)	Depositor
Refinement program	X-PLOR 3.851	Depositor
R, R_{free}	0.172 , 0.247	Depositor
Estimated twinning fraction	No twinning to report.	Xtrriage
Total number of atoms	5084	wwPDB-VP
Average B, all atoms (Å ²)	18.0	wwPDB-VP

5 Model quality [i](#)

5.1 Standard geometry [i](#)

Bond lengths and bond angles in the following residue types are not validated in this section: IPT, COA

The Z score for a bond length (or angle) is the number of standard deviations the observed value is removed from the expected value. A bond length (or angle) with $|Z| > 5$ is considered an outlier worth inspection. RMSZ is the root-mean-square of all Z scores of the bond lengths (or angles).

Mol	Chain	Bond lengths		Bond angles	
		RMSZ	# Z >5	RMSZ	# Z >5
1	A	0.42	0/1625	0.67	1/2210 (0.0%)
1	B	0.45	0/1625	0.70	1/2210 (0.0%)
1	C	0.42	0/1625	0.68	0/2210
All	All	0.43	0/4875	0.68	2/6630 (0.0%)

There are no bond length outliers.

All (2) bond angle outliers are listed below:

Mol	Chain	Res	Type	Atoms	Z	Observed(°)	Ideal(°)
1	B	3	MET	N-CA-C	-6.29	94.02	111.00
1	A	72	TYR	N-CA-C	-5.08	97.29	111.00

There are no chirality outliers.

There are no planarity outliers.

5.2 Too-close contacts [i](#)

In the following table, the Non-H and H(model) columns list the number of non-hydrogen atoms and hydrogen atoms in the chain respectively. The H(added) column lists the number of hydrogen atoms added and optimized by MolProbity. The Clashes column lists the number of clashes within the asymmetric unit, whereas Symm-Clashes lists symmetry-related clashes.

Mol	Chain	Non-H	H(model)	H(added)	Clashes	Symm-Clashes
1	A	1585	0	1548	59	0
1	B	1585	0	1548	58	0
1	C	1585	0	1548	53	0
2	A	48	0	32	4	0
2	B	48	0	32	3	0
2	C	48	0	32	2	0

Continued on next page...

Continued from previous page...

Mol	Chain	Non-H	H(model)	H(added)	Clashes	Symm-Clashes
3	A	45	0	51	8	0
3	B	30	0	34	4	0
3	C	15	0	17	1	0
4	A	32	0	0	4	0
4	B	29	0	0	3	0
4	C	34	0	0	2	0
All	All	5084	0	4842	178	0

The all-atom clashscore is defined as the number of clashes found per 1000 atoms (including hydrogen atoms). The all-atom clashscore for this structure is 18.

All (178) close contacts within the same asymmetric unit are listed below, sorted by their clash magnitude.

Atom-1	Atom-2	Interatomic distance (Å)	Clash overlap (Å)
4:A:2015:HOH:O	1:C:195:LYS:HD2	1.65	0.95
3:A:210:IPT:H4	4:A:2107:HOH:O	1.64	0.95
1:C:3:MET:HG2	1:C:4:PRO:HD2	1.53	0.88
1:C:51:ILE:HD11	1:C:58:VAL:HG11	1.60	0.83
1:C:37:ASN:HD21	1:C:68:VAL:H	1.26	0.80
1:A:199:VAL:O	1:A:201:SER:N	2.17	0.77
1:C:10:ARG:HD3	4:C:2033:HOH:O	1.84	0.77
1:A:26:ARG:NE	3:A:212:IPT:O4	2.17	0.76
1:A:191:HIS:O	1:A:199:VAL:HG12	1.87	0.74
1:C:3:MET:SD	1:C:7:GLU:HB3	2.28	0.74
1:C:180:ARG:HD2	4:C:2084:HOH:O	1.88	0.73
1:C:56:ALA:HB2	1:C:74:SER:O	1.88	0.73
1:C:182:ILE:HG13	1:C:183:ARG:N	2.04	0.72
1:B:51:ILE:HA	1:B:54:MET:HE2	1.75	0.68
3:A:210:IPT:C3	4:A:2107:HOH:O	2.42	0.68
1:B:45:GLU:H	1:B:45:GLU:CD	1.97	0.67
1:B:83:TYR:HE1	3:B:211:IPT:O6	1.77	0.67
1:A:43:GLU:OE2	1:A:46:LYS:HD3	1.95	0.67
1:C:186:ASN:ND2	1:C:188:ARG:H	1.92	0.67
1:A:50:LEU:O	1:A:54:MET:HG3	1.93	0.67
1:B:3:MET:CG	1:B:4:PRO:HD2	2.26	0.66
1:B:101:ASN:HB2	1:B:137:ASN:HD22	1.61	0.66
1:C:186:ASN:HD22	1:C:188:ARG:H	1.44	0.66
1:C:194:PHE:CZ	1:C:195:LYS:HD3	2.31	0.66
1:B:6:THR:HG23	1:B:20:GLU:OE1	1.96	0.65
1:A:37:ASN:HD21	1:A:68:VAL:H	1.42	0.65
1:A:194:PHE:CZ	1:A:195:LYS:HD3	2.33	0.64

Continued on next page...

Continued from previous page...

Atom-1	Atom-2	Interatomic distance (Å)	Clash overlap (Å)
1:B:83:TYR:HE1	3:B:211:IPT:HO6	1.43	0.63
3:A:210:IPT:C4	4:A:2107:HOH:O	2.33	0.63
1:B:3:MET:HG3	1:B:4:PRO:HD2	1.80	0.63
1:A:88:LEU:HD21	1:A:90:ILE:HD11	1.80	0.63
1:A:56:ALA:HB2	1:A:74:SER:O	1.99	0.62
1:C:10:ARG:HG3	1:C:94:TYR:OH	1.98	0.62
1:A:88:LEU:CD2	1:A:90:ILE:HD11	2.30	0.61
1:B:180:ARG:HD2	4:B:2027:HOH:O	2.01	0.61
1:C:60:GLU:OE1	1:C:80:ARG:HD3	2.00	0.61
1:B:37:ASN:HD21	1:B:68:VAL:H	1.50	0.60
1:B:191:HIS:O	1:B:199:VAL:HG12	2.01	0.60
1:A:21:GLY:O	1:A:24:GLU:HG2	2.02	0.60
1:A:51:ILE:O	1:A:51:ILE:HG13	1.98	0.59
1:B:81:ASN:HB2	1:B:101:ASN:HD22	1.66	0.59
1:A:91:VAL:O	1:A:112:VAL:HG22	2.03	0.59
1:C:3:MET:HG2	1:C:4:PRO:CD	2.31	0.58
1:A:14:LEU:HD21	1:A:116:PRO:HG3	1.85	0.58
1:B:81:ASN:HB2	1:B:101:ASN:ND2	2.19	0.58
1:B:199:VAL:O	1:B:199:VAL:HG13	2.03	0.57
1:C:51:ILE:HD11	1:C:58:VAL:CG1	2.34	0.57
3:B:211:IPT:O4	1:C:26:ARG:NE	2.37	0.57
1:C:112:VAL:O	1:C:148:PRO:HB3	2.05	0.57
1:A:137:ASN:HB2	1:A:155:ASN:HD22	1.69	0.56
1:C:104:ILE:HG23	1:C:108:VAL:HG21	1.86	0.56
1:B:186:ASN:C	1:B:186:ASN:HD22	2.09	0.56
1:B:88:LEU:HD13	1:B:104:ILE:HG21	1.88	0.56
1:B:22:LEU:N	1:B:23:PRO:CD	2.69	0.55
1:A:83:TYR:HE1	3:A:210:IPT:HO6	1.54	0.55
1:B:3:MET:HG2	1:B:4:PRO:N	2.22	0.55
1:C:6:THR:HA	1:C:9:ILE:HD12	1.88	0.55
1:C:26:ARG:HG2	1:C:72:TYR:CE2	2.42	0.55
1:A:3:MET:HG2	1:A:4:PRO:HD2	1.89	0.55
1:C:45:GLU:H	1:C:45:GLU:CD	2.08	0.54
1:C:186:ASN:HD22	1:C:186:ASN:C	2.10	0.54
1:B:4:PRO:HG2	1:B:7:GLU:OE1	2.08	0.54
1:A:107:ASN:O	1:A:143:HIS:HA	2.07	0.54
1:B:141:GLY:O	1:B:144:VAL:HG23	2.08	0.54
1:A:26:ARG:HH11	1:A:26:ARG:HG3	1.73	0.53
1:A:26:ARG:HG3	1:A:26:ARG:NH1	2.23	0.53
1:A:189:ASP:O	1:B:118:HIS:HB2	2.09	0.53
1:B:186:ASN:ND2	1:B:188:ARG:H	2.07	0.53

Continued on next page...

Continued from previous page...

Atom-1	Atom-2	Interatomic distance (Å)	Clash overlap (Å)
1:B:15:PHE:CZ	1:B:127:MET:HG3	2.44	0.52
1:B:51:ILE:O	1:B:51:ILE:HG13	2.04	0.52
1:A:105:ALA:HB1	2:A:204:COA:H31	1.90	0.52
1:B:199:VAL:O	1:B:201:SER:N	2.39	0.52
1:B:51:ILE:HA	1:B:54:MET:CE	2.39	0.52
1:C:191:HIS:O	1:C:199:VAL:HG12	2.10	0.51
1:A:83:TYR:HE1	3:A:210:IPT:O6	1.93	0.51
1:B:21:GLY:O	1:B:24:GLU:HG2	2.12	0.50
1:A:51:ILE:HA	1:A:54:MET:CE	2.41	0.50
3:A:209:IPT:C3'	1:C:103:LEU:HD21	2.41	0.50
1:C:174:ALA:HB1	1:C:179:CYS:SG	2.51	0.50
1:C:91:VAL:O	1:C:112:VAL:HG22	2.11	0.50
1:C:169:PRO:O	1:C:172:VAL:HG22	2.11	0.50
1:C:48:GLU:O	1:C:52:LYS:HD2	2.10	0.50
1:A:37:ASN:ND2	1:A:68:VAL:H	2.09	0.50
1:A:112:VAL:O	1:A:148:PRO:HB3	2.12	0.50
1:B:3:MET:HG2	1:B:4:PRO:CD	2.42	0.49
1:A:184:GLU:HG3	1:A:185:ILE:N	2.26	0.49
1:C:6:THR:HG23	1:C:20:GLU:OE1	2.12	0.49
1:C:147:ASN:HB3	1:C:148:PRO:CD	2.42	0.49
1:A:26:ARG:HG2	1:A:72:TYR:CE2	2.48	0.48
1:A:51:ILE:HA	1:A:54:MET:HE2	1.94	0.48
1:B:180:ARG:HE	1:B:180:ARG:HB3	1.52	0.48
1:B:78:ILE:HG21	1:B:82:PHE:CG	2.48	0.48
1:A:6:THR:HG23	1:A:20:GLU:OE1	2.13	0.48
1:B:72:TYR:O	1:B:92:ASP:OD2	2.32	0.48
1:A:22:LEU:N	1:A:23:PRO:CD	2.77	0.47
1:B:3:MET:HG2	1:B:4:PRO:HD2	1.95	0.47
1:B:6:THR:O	1:B:10:ARG:HD2	2.14	0.47
1:B:100:ASP:N	1:B:136:ASN:OD1	2.38	0.47
1:B:8:ARG:NH1	1:B:14:LEU:O	2.48	0.47
1:C:22:LEU:N	1:C:23:PRO:CD	2.78	0.47
1:B:116:PRO:HD2	1:B:122:ARG:HB3	1.98	0.46
1:A:8:ARG:NH1	1:A:14:LEU:O	2.48	0.46
1:B:57:THR:OG1	1:B:77:HIS:HD2	1.98	0.46
1:B:105:ALA:HB1	2:B:205:COA:H31	1.96	0.46
1:A:33:MET:HB2	1:A:70:PHE:CZ	2.51	0.46
1:A:186:ASN:C	1:A:186:ASN:HD22	2.19	0.46
1:B:107:ASN:O	1:B:143:HIS:HA	2.16	0.46
1:A:101:ASN:HB2	1:A:137:ASN:HD22	1.81	0.45
1:A:51:ILE:HD11	1:A:58:VAL:HG11	1.99	0.45

Continued on next page...

Continued from previous page...

Atom-1	Atom-2	Interatomic distance (Å)	Clash overlap (Å)
1:C:33:MET:HB2	1:C:70:PHE:CZ	2.51	0.45
1:C:107:ASN:O	1:C:143:HIS:HA	2.16	0.45
1:C:40:HIS:CG	1:C:41:PRO:HD2	2.51	0.45
1:A:180:ARG:HE	1:A:180:ARG:HB3	1.48	0.45
1:B:145:VAL:HB	1:B:163:ILE:HD12	1.98	0.45
1:C:51:ILE:HA	1:C:54:MET:HE2	1.98	0.45
1:A:40:HIS:CG	1:A:41:PRO:HD2	2.52	0.45
1:C:37:ASN:ND2	1:C:67:PRO:HA	2.31	0.45
1:A:37:ASN:ND2	1:A:67:PRO:HA	2.32	0.45
1:C:101:ASN:HB2	1:C:137:ASN:HD22	1.82	0.45
1:C:3:MET:O	1:C:4:PRO:C	2.53	0.45
1:C:145:VAL:HB	1:C:163:ILE:HD12	1.99	0.45
1:A:61:ASN:HB3	1:A:81:ASN:HD22	1.82	0.44
1:A:137:ASN:HB2	1:A:155:ASN:ND2	2.32	0.44
1:B:83:TYR:CE1	3:B:211:IPT:O6	2.58	0.44
1:B:188:ARG:NH2	4:B:2076:HOH:O	2.49	0.44
1:A:26:ARG:CZ	3:A:212:IPT:O4	2.66	0.44
1:C:22:LEU:HB2	1:C:23:PRO:HD3	1.98	0.44
1:A:199:VAL:O	1:A:199:VAL:HG22	2.16	0.44
1:C:8:ARG:NH1	1:C:14:LEU:O	2.51	0.44
2:C:206:COA:HN8	2:C:206:COA:H141	1.83	0.44
1:B:37:ASN:ND2	1:B:67:PRO:HA	2.33	0.43
2:A:204:COA:HN8	2:A:204:COA:H141	1.83	0.43
1:A:186:ASN:ND2	1:A:188:ARG:H	2.16	0.43
1:B:182:ILE:HG13	1:B:183:ARG:N	2.32	0.43
2:B:205:COA:H141	2:B:205:COA:HN8	1.83	0.43
1:A:182:ILE:HG13	1:A:183:ARG:N	2.33	0.43
1:C:147:ASN:HD22	1:C:147:ASN:HA	1.60	0.43
2:A:204:COA:OAP	2:A:204:COA:N7A	2.52	0.43
1:B:47:ARG:O	1:B:51:ILE:CG2	2.67	0.43
4:B:2035:HOH:O	1:C:166:LYS:HE3	2.18	0.43
1:B:26:ARG:HG3	1:B:72:TYR:CE2	2.54	0.43
1:B:145:VAL:HB	1:B:163:ILE:CD1	2.49	0.43
1:B:174:ALA:HB1	1:B:179:CYS:SG	2.59	0.43
1:C:113:THR:HA	1:C:128:TYR:O	2.18	0.43
1:A:195:LYS:HB3	1:A:196:ASP:H	1.50	0.42
1:A:45:GLU:H	1:A:45:GLU:CD	2.23	0.42
1:C:94:TYR:HD2	1:C:131:PRO:HD3	1.84	0.42
1:A:88:LEU:HD13	1:A:104:ILE:HG21	2.01	0.42
2:B:205:COA:OAP	2:B:205:COA:N7A	2.53	0.42
1:A:82:PHE:CZ	1:A:84:ALA:HB2	2.54	0.42

Continued on next page...

Continued from previous page...

Atom-1	Atom-2	Interatomic distance (Å)	Clash overlap (Å)
1:A:94:TYR:CD2	1:A:131:PRO:HG3	2.55	0.42
1:B:55:PHE:HB2	1:B:58:VAL:CG2	2.49	0.42
1:C:195:LYS:HB3	1:C:196:ASP:H	1.61	0.42
1:A:199:VAL:O	1:A:199:VAL:HG13	2.19	0.42
1:B:47:ARG:O	1:B:51:ILE:HG23	2.19	0.42
1:A:94:TYR:HD2	1:A:131:PRO:HD3	1.85	0.42
1:B:92:ASP:C	1:B:94:TYR:H	2.23	0.42
1:C:47:ARG:NH2	1:C:66:PRO:HG2	2.35	0.42
2:C:206:COA:OAP	2:C:206:COA:N7A	2.53	0.42
1:A:72:TYR:O	1:A:92:ASP:OD1	2.38	0.41
1:A:5:MET:SD	1:A:15:PHE:HB2	2.60	0.41
1:B:101:ASN:O	1:B:137:ASN:HA	2.19	0.41
1:B:112:VAL:O	1:B:129:SER:HA	2.19	0.41
1:C:147:ASN:HB3	1:C:148:PRO:HD2	2.03	0.41
1:A:105:ALA:CB	2:A:204:COA:H31	2.50	0.41
1:A:147:ASN:HB3	1:A:148:PRO:HD2	2.01	0.41
1:B:3:MET:CG	1:B:4:PRO:CD	2.96	0.41
1:C:51:ILE:HA	1:C:54:MET:CE	2.50	0.41
1:A:101:ASN:HB2	1:A:137:ASN:ND2	2.36	0.41
1:B:91:VAL:O	1:B:112:VAL:HG22	2.21	0.41
1:C:26:ARG:HG2	1:C:72:TYR:CD2	2.56	0.41
1:A:169:PRO:O	1:A:172:VAL:HG22	2.21	0.41
1:B:168:ILE:HD13	1:B:168:ILE:HA	1.89	0.40
1:B:103:LEU:HD21	3:C:208:IPT:C3'	2.51	0.40
1:C:199:VAL:O	1:C:201:SER:N	2.54	0.40
1:A:159:GLY:O	1:A:162:SER:OG	2.39	0.40
1:B:88:LEU:CD2	1:B:90:ILE:HD11	2.51	0.40
1:C:37:ASN:ND2	1:C:68:VAL:H	2.05	0.40

There are no symmetry-related clashes.

5.3 Torsion angles [\(i\)](#)

5.3.1 Protein backbone [\(i\)](#)

In the following table, the Percentiles column shows the percent Ramachandran outliers of the chain as a percentile score with respect to all X-ray entries followed by that with respect to entries of similar resolution.

The Analysed column shows the number of residues for which the backbone conformation was analysed, and the total number of residues.

Mol	Chain	Analysed	Favoured	Allowed	Outliers	Percentiles	
1	A	199/203 (98%)	178 (89%)	20 (10%)	1 (0%)	29	61
1	B	199/203 (98%)	183 (92%)	15 (8%)	1 (0%)	29	61
1	C	199/203 (98%)	185 (93%)	13 (6%)	1 (0%)	29	61
All	All	597/609 (98%)	546 (92%)	48 (8%)	3 (0%)	29	61

All (3) Ramachandran outliers are listed below:

Mol	Chain	Res	Type
1	A	200	GLU
1	B	200	GLU
1	C	74	SER

5.3.2 Protein sidechains [i](#)

In the following table, the Percentiles column shows the percent sidechain outliers of the chain as a percentile score with respect to all X-ray entries followed by that with respect to entries of similar resolution.

The Analysed column shows the number of residues for which the sidechain conformation was analysed, and the total number of residues.

Mol	Chain	Analysed	Rotameric	Outliers	Percentiles	
1	A	176/179 (98%)	155 (88%)	21 (12%)	5	16
1	B	176/179 (98%)	158 (90%)	18 (10%)	7	22
1	C	176/179 (98%)	156 (89%)	20 (11%)	5	18
All	All	528/537 (98%)	469 (89%)	59 (11%)	6	18

All (59) residues with a non-rotameric sidechain are listed below:

Mol	Chain	Res	Type
1	A	5	MET
1	A	10	ARG
1	A	24	GLU
1	A	25	LYS
1	A	32	LEU
1	A	49	SER
1	A	51	ILE
1	A	52	LYS
1	A	61	ASN
1	A	85	ASN

Continued on next page...

Continued from previous page...

Mol	Chain	Res	Type
1	A	103	LEU
1	A	120	GLU
1	A	123	LYS
1	A	142	SER
1	A	162	SER
1	A	180	ARG
1	A	184	GLU
1	A	186	ASN
1	A	188	ARG
1	A	190	LYS
1	A	196	ASP
1	B	3	MET
1	B	10	ARG
1	B	24	GLU
1	B	25	LYS
1	B	32	LEU
1	B	51	ILE
1	B	52	LYS
1	B	61	ASN
1	B	68	VAL
1	B	85	ASN
1	B	103	LEU
1	B	124	ASN
1	B	137	ASN
1	B	162	SER
1	B	180	ARG
1	B	184	GLU
1	B	186	ASN
1	B	190	LYS
1	C	10	ARG
1	C	16	THR
1	C	24	GLU
1	C	25	LYS
1	C	32	LEU
1	C	49	SER
1	C	51	ILE
1	C	52	LYS
1	C	61	ASN
1	C	85	ASN
1	C	103	LEU
1	C	120	GLU
1	C	124	ASN

Continued on next page...

Continued from previous page...

Mol	Chain	Res	Type
1	C	162	SER
1	C	180	ARG
1	C	184	GLU
1	C	186	ASN
1	C	188	ARG
1	C	190	LYS
1	C	196	ASP

Sometimes sidechains can be flipped to improve hydrogen bonding and reduce clashes. All (27) such sidechains are listed below:

Mol	Chain	Res	Type
1	A	37	ASN
1	A	38	HIS
1	A	81	ASN
1	A	85	ASN
1	A	101	ASN
1	A	119	HIS
1	A	137	ASN
1	A	155	ASN
1	A	186	ASN
1	B	37	ASN
1	B	38	HIS
1	B	77	HIS
1	B	81	ASN
1	B	101	ASN
1	B	137	ASN
1	B	155	ASN
1	B	171	ASN
1	B	186	ASN
1	C	37	ASN
1	C	38	HIS
1	C	77	HIS
1	C	81	ASN
1	C	101	ASN
1	C	137	ASN
1	C	155	ASN
1	C	171	ASN
1	C	186	ASN

5.3.3 RNA [i](#)

There are no RNA molecules in this entry.

5.4 Non-standard residues in protein, DNA, RNA chains [i](#)

There are no non-standard protein/DNA/RNA residues in this entry.

5.5 Carbohydrates [i](#)

There are no monosaccharides in this entry.

5.6 Ligand geometry [i](#)

9 ligands are modelled in this entry.

In the following table, the Counts columns list the number of bonds (or angles) for which Mogul statistics could be retrieved, the number of bonds (or angles) that are observed in the model and the number of bonds (or angles) that are defined in the Chemical Component Dictionary. The Link column lists molecule types, if any, to which the group is linked. The Z score for a bond length (or angle) is the number of standard deviations the observed value is removed from the expected value. A bond length (or angle) with $|Z| > 2$ is considered an outlier worth inspection. RMSZ is the root-mean-square of all Z scores of the bond lengths (or angles).

Mol	Type	Chain	Res	Link	Bond lengths			Bond angles		
					Counts	RMSZ	# Z > 2	Counts	RMSZ	# Z > 2
3	IPT	A	212	-	14,15,15	2.79	4 (28%)	18,21,21	2.16	2 (11%)
3	IPT	B	207	-	14,15,15	2.72	4 (28%)	18,21,21	2.16	1 (5%)
2	COA	C	206	-	41,50,50	1.00	2 (4%)	52,75,75	1.14	2 (3%)
2	COA	A	204	-	41,50,50	1.02	2 (4%)	52,75,75	1.14	1 (1%)
3	IPT	A	210	-	14,15,15	2.68	4 (28%)	18,21,21	2.14	2 (11%)
3	IPT	B	211	-	14,15,15	2.78	4 (28%)	18,21,21	2.16	2 (11%)
3	IPT	A	209	-	14,15,15	2.73	4 (28%)	18,21,21	2.18	1 (5%)
3	IPT	C	208	-	14,15,15	2.67	4 (28%)	18,21,21	2.17	1 (5%)
2	COA	B	205	-	41,50,50	1.01	2 (4%)	52,75,75	1.15	3 (5%)

In the following table, the Chirals column lists the number of chiral outliers, the number of chiral centers analysed, the number of these observed in the model and the number defined in the Chemical Component Dictionary. Similar counts are reported in the Torsion and Rings columns. '-' means no outliers of that kind were identified.

Mol	Type	Chain	Res	Link	Chirals	Torsions	Rings
3	IPT	A	212	-	-	0/6/26/26	0/1/1/1
3	IPT	B	207	-	-	2/6/26/26	0/1/1/1
2	COA	C	206	-	-	11/44/64/64	0/3/3/3
2	COA	A	204	-	-	11/44/64/64	0/3/3/3
3	IPT	A	210	-	-	0/6/26/26	0/1/1/1
3	IPT	B	211	-	-	0/6/26/26	0/1/1/1
3	IPT	A	209	-	-	2/6/26/26	0/1/1/1
3	IPT	C	208	-	-	2/6/26/26	0/1/1/1
2	COA	B	205	-	-	10/44/64/64	0/3/3/3

All (30) bond length outliers are listed below:

Mol	Chain	Res	Type	Atoms	Z	Observed(Å)	Ideal(Å)
3	A	209	IPT	C1'-S1	-8.92	1.44	1.83
3	B	207	IPT	C1'-S1	-8.82	1.44	1.83
3	B	211	IPT	C1'-S1	-8.78	1.44	1.83
3	A	212	IPT	C1'-S1	-8.75	1.45	1.83
3	C	208	IPT	C1'-S1	-8.75	1.45	1.83
3	A	210	IPT	C1'-S1	-8.52	1.46	1.83
3	A	212	IPT	C1-C2	3.47	1.59	1.53
3	B	211	IPT	C1-C2	3.46	1.59	1.53
3	A	210	IPT	C1-C2	2.85	1.58	1.53
3	B	211	IPT	C3'-C1'	2.79	1.63	1.51
3	A	212	IPT	C3'-C1'	2.78	1.63	1.51
3	A	210	IPT	C3'-C1'	2.75	1.63	1.51
3	A	212	IPT	C2'-C1'	2.58	1.62	1.51
3	A	209	IPT	C3'-C1'	2.57	1.62	1.51
3	B	207	IPT	C3'-C1'	2.56	1.62	1.51
3	B	211	IPT	C2'-C1'	2.55	1.62	1.51
3	C	208	IPT	C2'-C1'	2.55	1.62	1.51
3	C	208	IPT	C3'-C1'	2.54	1.62	1.51
3	A	210	IPT	C2'-C1'	2.52	1.62	1.51
3	A	209	IPT	C2'-C1'	2.51	1.62	1.51
3	A	209	IPT	C1-C2	2.46	1.57	1.53
3	B	207	IPT	C1-C2	2.45	1.57	1.53
3	B	207	IPT	C2'-C1'	2.44	1.62	1.51
2	A	204	COA	O6A-CCP	2.39	1.51	1.43
2	A	204	COA	C2A-N3A	2.34	1.35	1.32
2	B	205	COA	C2A-N3A	2.32	1.35	1.32
2	C	206	COA	C2A-N3A	2.29	1.35	1.32
2	B	205	COA	O6A-CCP	2.27	1.51	1.43
3	C	208	IPT	C1-C2	2.19	1.57	1.53

Continued on next page...

Continued from previous page...

Mol	Chain	Res	Type	Atoms	Z	Observed(Å)	Ideal(Å)
2	C	206	COA	O6A-CCP	2.19	1.50	1.43

All (15) bond angle outliers are listed below:

Mol	Chain	Res	Type	Atoms	Z	Observed(°)	Ideal(°)
3	A	209	IPT	C1-S1-C1'	8.79	127.16	100.26
3	C	208	IPT	C1-S1-C1'	8.77	127.11	100.26
3	B	207	IPT	C1-S1-C1'	8.71	126.94	100.26
3	B	211	IPT	C1-S1-C1'	8.54	126.42	100.26
3	A	212	IPT	C1-S1-C1'	8.49	126.26	100.26
3	A	210	IPT	C1-S1-C1'	8.46	126.15	100.26
2	C	206	COA	O6A-CCP-CBP	4.13	117.19	110.55
2	A	204	COA	O6A-CCP-CBP	4.03	117.02	110.55
2	B	205	COA	O6A-CCP-CBP	3.96	116.91	110.55
3	B	211	IPT	C4-C3-C2	-2.12	107.12	110.82
3	A	210	IPT	C4-C3-C2	-2.12	107.13	110.82
3	A	212	IPT	C4-C3-C2	-2.08	107.19	110.82
2	B	205	COA	O6A-P2A-O4A	2.08	117.19	109.07
2	C	206	COA	O6A-P2A-O4A	2.07	117.14	109.07
2	B	205	COA	C5A-C6A-N6A	2.06	123.48	120.35

There are no chirality outliers.

All (38) torsion outliers are listed below:

Mol	Chain	Res	Type	Atoms
2	A	204	COA	C5B-O5B-P1A-O1A
2	A	204	COA	CDP-CBP-CCP-O6A
2	A	204	COA	CEP-CBP-CCP-O6A
2	A	204	COA	CAP-CBP-CCP-O6A
2	A	204	COA	O9P-C9P-CAP-CBP
2	A	204	COA	N8P-C9P-CAP-CBP
2	A	204	COA	N8P-C9P-CAP-OAP
2	B	205	COA	C5B-O5B-P1A-O1A
2	B	205	COA	CDP-CBP-CCP-O6A
2	B	205	COA	CEP-CBP-CCP-O6A
2	B	205	COA	CAP-CBP-CCP-O6A
2	B	205	COA	O9P-C9P-CAP-CBP
2	B	205	COA	N8P-C9P-CAP-CBP
2	B	205	COA	N8P-C9P-CAP-OAP
2	C	206	COA	C5B-O5B-P1A-O1A
2	C	206	COA	CDP-CBP-CCP-O6A
2	C	206	COA	CEP-CBP-CCP-O6A

Continued on next page...

Continued from previous page...

Mol	Chain	Res	Type	Atoms
2	C	206	COA	CAP-CBP-CCP-O6A
2	C	206	COA	O9P-C9P-CAP-CBP
2	C	206	COA	N8P-C9P-CAP-CBP
2	C	206	COA	N8P-C9P-CAP-OAP
3	A	209	IPT	C2'-C1'-S1-C1
3	A	209	IPT	C3'-C1'-S1-C1
3	B	207	IPT	C2'-C1'-S1-C1
3	B	207	IPT	C3'-C1'-S1-C1
3	C	208	IPT	C2'-C1'-S1-C1
3	C	208	IPT	C3'-C1'-S1-C1
2	A	204	COA	C2B-C3B-O3B-P3B
2	A	204	COA	C4B-C3B-O3B-P3B
2	B	205	COA	C2B-C3B-O3B-P3B
2	B	205	COA	C4B-C3B-O3B-P3B
2	C	206	COA	C2B-C3B-O3B-P3B
2	C	206	COA	C4B-C3B-O3B-P3B
2	A	204	COA	C5B-O5B-P1A-O3A
2	B	205	COA	C5B-O5B-P1A-O3A
2	C	206	COA	C5B-O5B-P1A-O3A
2	A	204	COA	P1A-O3A-P2A-O5A
2	C	206	COA	P1A-O3A-P2A-O5A

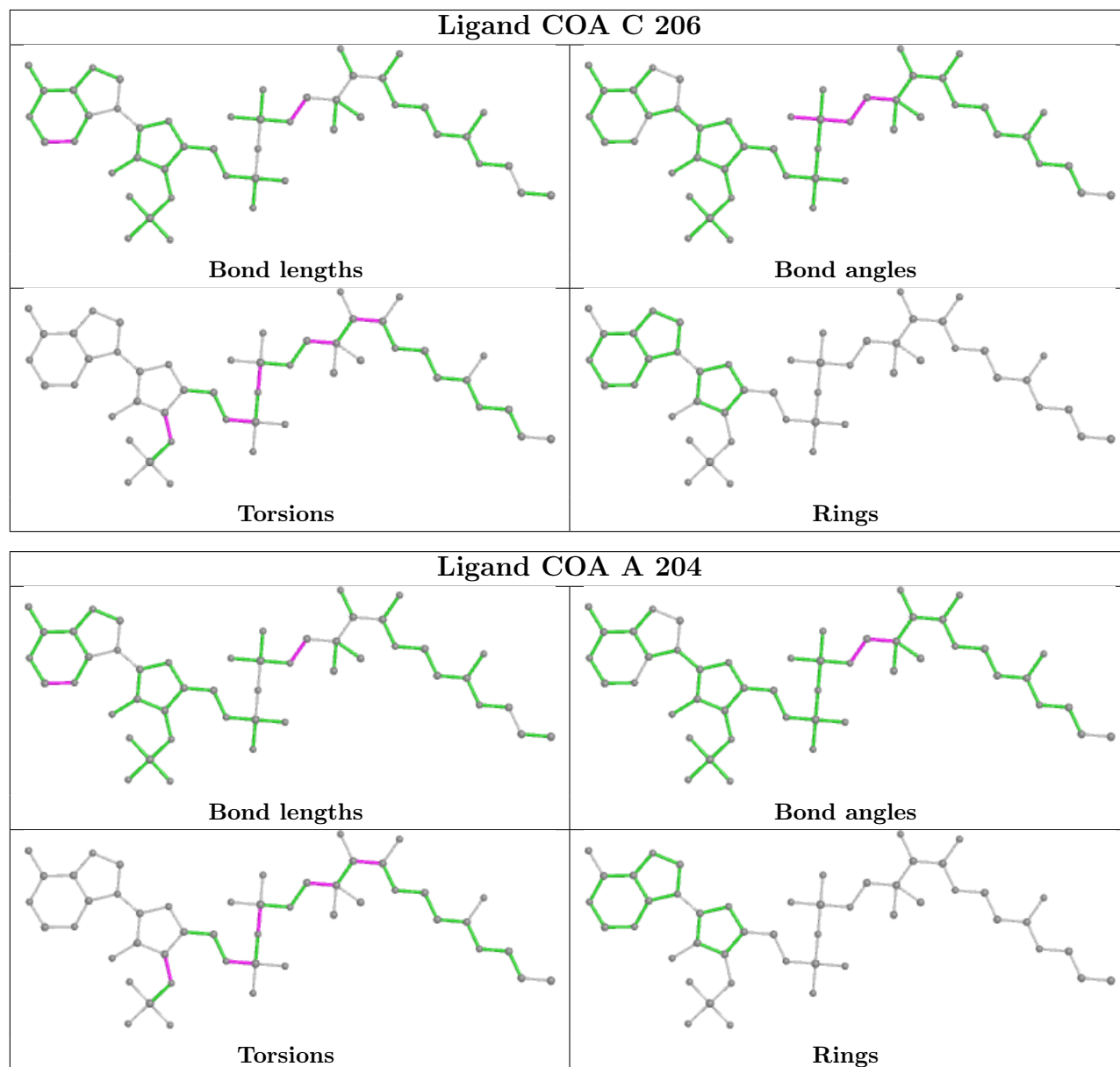
There are no ring outliers.

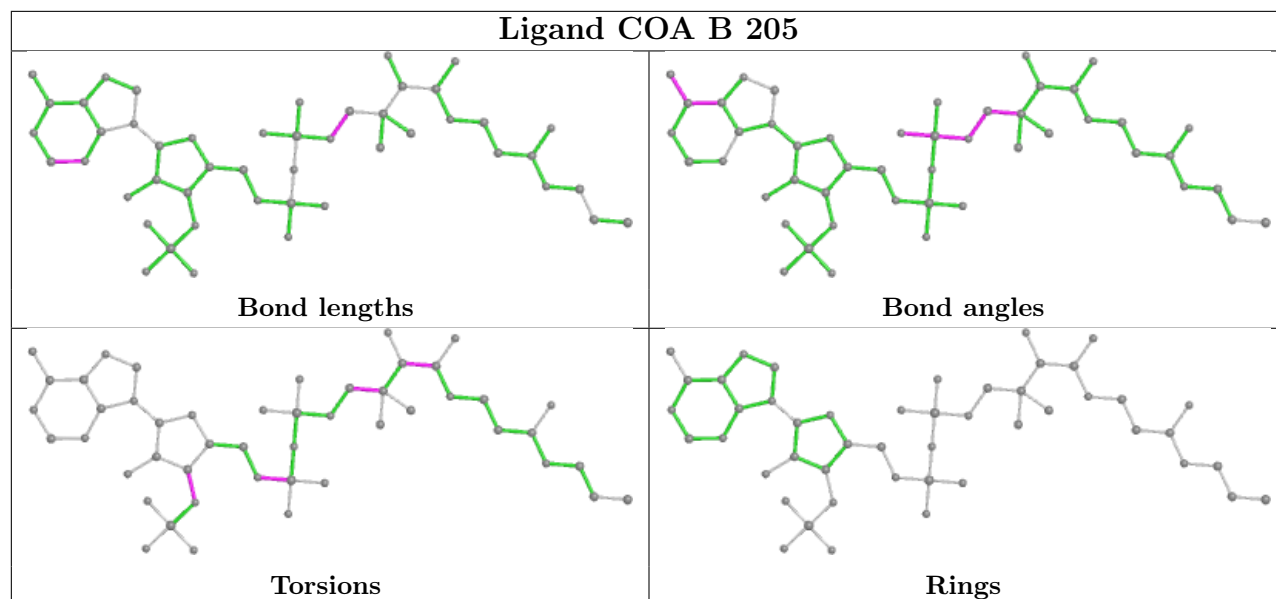
8 monomers are involved in 22 short contacts:

Mol	Chain	Res	Type	Clashes	Symm-Clashes
3	A	212	IPT	2	0
2	C	206	COA	2	0
2	A	204	COA	4	0
3	A	210	IPT	5	0
3	B	211	IPT	4	0
3	A	209	IPT	1	0
3	C	208	IPT	1	0
2	B	205	COA	3	0

The following is a two-dimensional graphical depiction of Mogul quality analysis of bond lengths, bond angles, torsion angles, and ring geometry for all instances of the Ligand of Interest. In addition, ligands with molecular weight > 250 and outliers as shown on the validation Tables will also be included. For torsion angles, if less than 5% of the Mogul distribution of torsion angles is within 10 degrees of the torsion angle in question, then that torsion angle is considered an outlier. Any bond that is central to one or more torsion angles identified as an outlier by Mogul will be highlighted in the graph. For rings, the root-mean-square deviation (RMSD) between the ring

in question and similar rings identified by Mogul is calculated over all ring torsion angles. If the average RMSD is greater than 60 degrees and the minimal RMSD between the ring in question and any Mogul-identified rings is also greater than 60 degrees, then that ring is considered an outlier. The outliers are highlighted in purple. The color gray indicates Mogul did not find sufficient equivalents in the CSD to analyse the geometry.





5.7 Other polymers [i](#)

There are no such residues in this entry.

5.8 Polymer linkage issues [i](#)

There are no chain breaks in this entry.

6 Fit of model and data [i](#)

6.1 Protein, DNA and RNA chains [i](#)

EDS was not executed - this section is therefore empty.

6.2 Non-standard residues in protein, DNA, RNA chains [i](#)

EDS was not executed - this section is therefore empty.

6.3 Carbohydrates [i](#)

EDS was not executed - this section is therefore empty.

6.4 Ligands [i](#)

EDS was not executed - this section is therefore empty.

6.5 Other polymers [i](#)

EDS was not executed - this section is therefore empty.