



wwPDB X-ray Structure Validation Summary Report ⓘ

Nov 16, 2023 – 02:48 AM JST

PDB ID : 6KPP
Title : BNC105 in complex with tubulin
Authors : Wang, T.; Wu, C.; Pu, D.
Deposited on : 2019-08-15
Resolution : 2.75 Å(reported)

This is a wwPDB X-ray Structure Validation Summary Report for a publicly released PDB entry.

We welcome your comments at validation@mail.wwpdb.org

A user guide is available at

<https://www.wwpdb.org/validation/2017/XrayValidationReportHelp>

with specific help available everywhere you see the ⓘ symbol.

The types of validation reports are described at

<http://www.wwpdb.org/validation/2017/FAQs#types>.

The following versions of software and data (see [references ⓘ](#)) were used in the production of this report:

MolProbity : 4.02b-467
Mogul : 1.8.5 (274361), CSD as541be (2020)
Xtriage (Phenix) : 1.13
EDS : 2.36
buster-report : 1.1.7 (2018)
Percentile statistics : 20191225.v01 (using entries in the PDB archive December 25th 2019)
Refmac : 5.8.0158
CCP4 : 7.0.044 (Gargrove)
Ideal geometry (proteins) : Engh & Huber (2001)
Ideal geometry (DNA, RNA) : Parkinson et al. (1996)
Validation Pipeline (wwPDB-VP) : 2.36

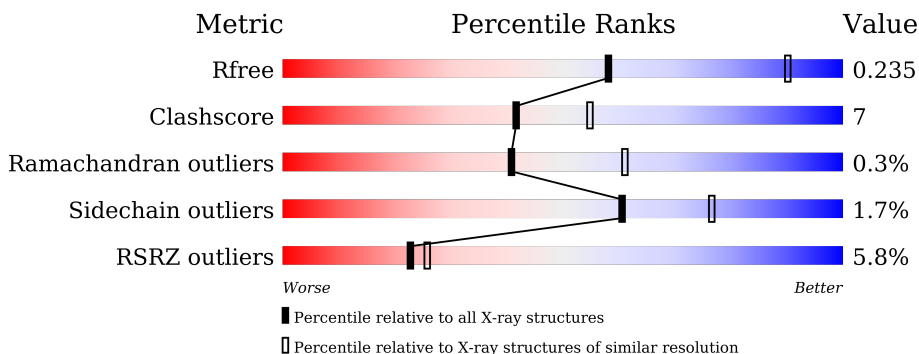
1 Overall quality at a glance

The following experimental techniques were used to determine the structure:

X-RAY DIFFRACTION

The reported resolution of this entry is 2.75 Å.

Percentile scores (ranging between 0-100) for global validation metrics of the entry are shown in the following graphic. The table shows the number of entries on which the scores are based.



Metric	Whole archive (#Entries)	Similar resolution (#Entries, resolution range(Å))
R_{free}	130704	1271 (2.76-2.72)
Clashscore	141614	1322 (2.76-2.72)
Ramachandran outliers	138981	1297 (2.76-2.72)
Sidechain outliers	138945	1298 (2.76-2.72)
RSRZ outliers	127900	1243 (2.76-2.72)

The table below summarises the geometric issues observed across the polymeric chains and their fit to the electron density. The red, orange, yellow and green segments of the lower bar indicate the fraction of residues that contain outliers for ≥ 3 , 2, 1 and 0 types of geometric quality criteria respectively. A grey segment represents the fraction of residues that are not modelled. The numeric value for each fraction is indicated below the corresponding segment, with a dot representing fractions $\leq 5\%$. The upper red bar (where present) indicates the fraction of residues that have poor fit to the electron density. The numeric value is given above the bar.

Mol	Chain	Length	Quality of chain
1	A	450	
1	C	450	
2	B	445	
2	D	445	
3	E	143	
4	F	384	

2 Entry composition [i](#)

There are 12 unique types of molecules in this entry. The entry contains 17583 atoms, of which 0 are hydrogens and 0 are deuteriums.

In the tables below, the ZeroOcc column contains the number of atoms modelled with zero occupancy, the AltConf column contains the number of residues with at least one atom in alternate conformation and the Trace column contains the number of residues modelled with at most 2 atoms.

- Molecule 1 is a protein called Tubulin alpha-1B chain.

Mol	Chain	Residues	Atoms					ZeroOcc	AltConf	Trace
			Total	C	N	O	S			
1	A	438	Total	C	N	O	S	0	2	0
			3430	2171	582	653	24			
1	C	441	Total	C	N	O	S	0	5	0
			3462	2190	586	663	23			

- Molecule 2 is a protein called Tubulin beta chain.

Mol	Chain	Residues	Atoms					ZeroOcc	AltConf	Trace
			Total	C	N	O	S			
2	B	429	Total	C	N	O	S	0	0	0
			3376	2119	578	652	27			
2	D	418	Total	C	N	O	S	0	2	0
			3297	2073	559	638	27			

- Molecule 3 is a protein called Stathmin-4.

Mol	Chain	Residues	Atoms					ZeroOcc	AltConf	Trace
			Total	C	N	O	S			
3	E	123	Total	C	N	O	S	0	2	0
			1026	633	186	202	5			

There are 2 discrepancies between the modelled and reference sequences:

Chain	Residue	Modelled	Actual	Comment	Reference
E	1	MET	-	expression tag	UNP P63042
E	2	ALA	-	expression tag	UNP P63042

- Molecule 4 is a protein called Tubulin tyrosine ligase.

Mol	Chain	Residues	Atoms					ZeroOcc	AltConf	Trace
			Total	C	N	O	S			
4	F	317	Total	C	N	O	S	0	0	0
			2615	1681	454	466	14			

There are 6 discrepancies between the modelled and reference sequences:

Chain	Residue	Modelled	Actual	Comment	Reference
F	379	HIS	-	expression tag	UNP E1BQ43
F	380	HIS	-	expression tag	UNP E1BQ43
F	381	HIS	-	expression tag	UNP E1BQ43
F	382	HIS	-	expression tag	UNP E1BQ43
F	383	HIS	-	expression tag	UNP E1BQ43
F	384	HIS	-	expression tag	UNP E1BQ43

- Molecule 5 is GUANOSINE-5'-TRIPHOSPHATE (three-letter code: GTP) (formula: $C_{10}H_{16}N_5O_{14}P_3$).



Mol	Chain	Residues	Atoms					ZeroOcc	AltConf
			Total	C	N	O	P		
5	A	1	Total	C	N	O	P	0	0
			32	10	5	14	3		
5	C	1	Total	C	N	O	P	0	0
			32	10	5	14	3		

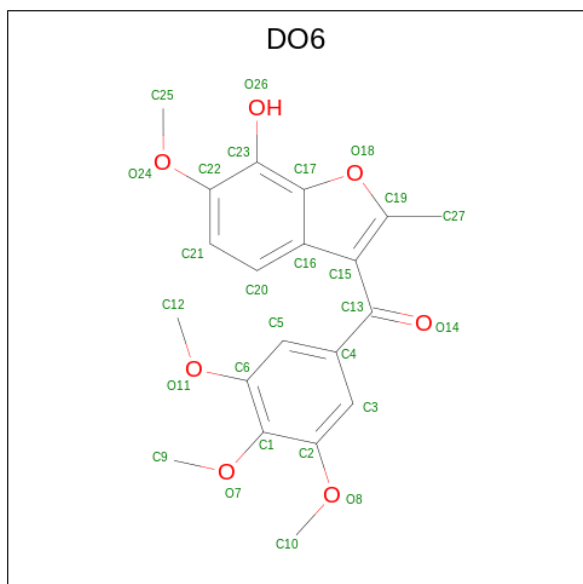
- Molecule 6 is MAGNESIUM ION (three-letter code: MG) (formula: Mg).

Mol	Chain	Residues	Atoms		ZeroOcc	AltConf
			Total	Mg		
6	A	1	Total	Mg	0	0
			1	1		
6	B	1	Total	Mg	0	0
			1	1		
6	C	1	Total	Mg	0	0
			1	1		
6	D	1	Total	Mg	0	0
			1	1		

- Molecule 7 is CALCIUM ION (three-letter code: CA) (formula: Ca).

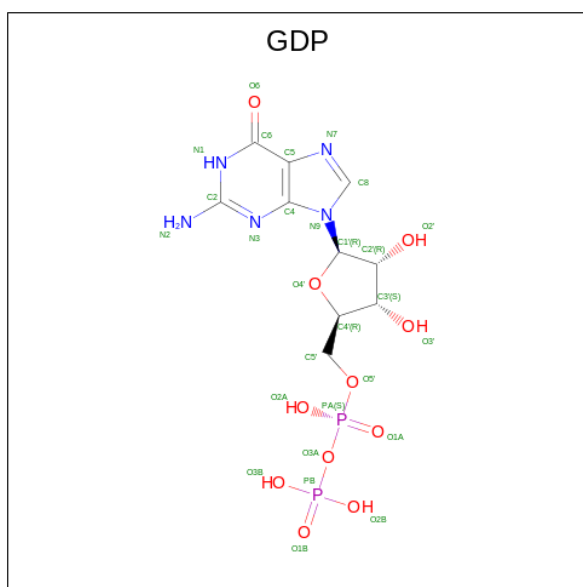
Mol	Chain	Residues	Atoms	ZeroOcc	AltConf
7	A	1	Total Ca 1 1	0	0
7	C	1	Total Ca 1 1	0	0

- Molecule 8 is (6-methoxy-2-methyl-7-oxidanyl-1-benzofuran-3-yl)-(3,4,5-trimethoxyphenyl)methanone (three-letter code: DO6) (formula: C₂₀H₂₀O₇) (labeled as "Ligand of Interest" by depositor).



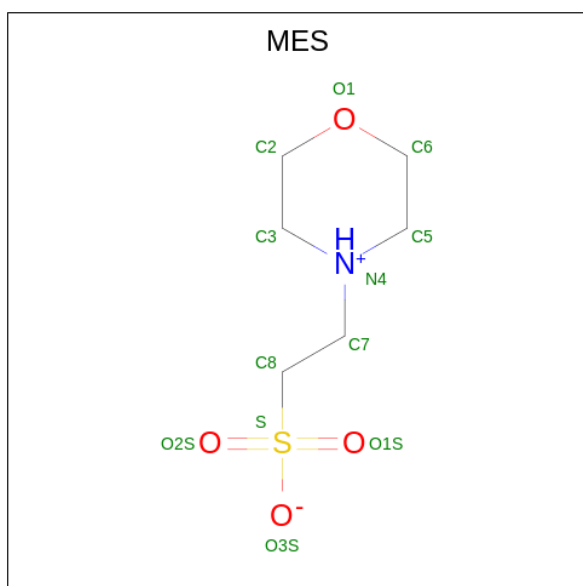
Mol	Chain	Residues	Atoms	ZeroOcc	AltConf
8	B	1	Total C O 27 20 7	0	0
8	D	1	Total C O 27 20 7	0	0

- Molecule 9 is GUANOSINE-5'-DIPHOSPHATE (three-letter code: GDP) (formula: C₁₀H₁₅N₅O₁₁P₂).



Mol	Chain	Residues	Atoms					ZeroOcc	AltConf
			Total	C	N	O	P		
9	B	1	Total	C	N	O	P	0	0
			28	10	5	11	2		
9	D	1	Total	C	N	O	P	0	0
			28	10	5	11	2		

- Molecule 10 is 2-(N-MORPHOLINO)-ETHANESULFONIC ACID (three-letter code: MES) (formula: C₆H₁₃NO₄S).



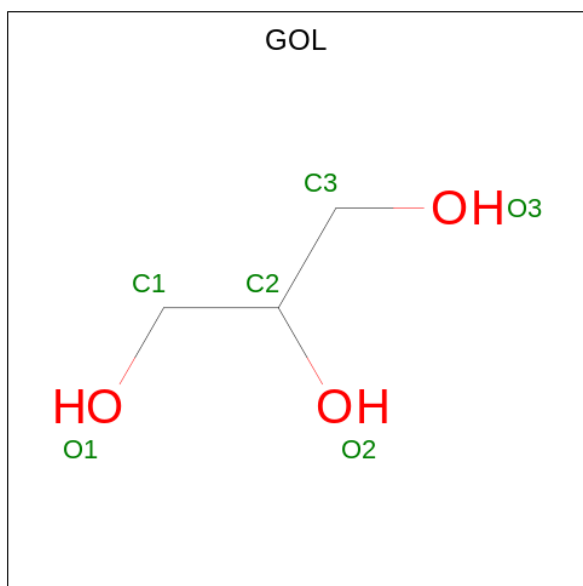
Mol	Chain	Residues	Atoms					ZeroOcc	AltConf
			Total	C	N	O	S		
10	B	1	Total	C	N	O	S	0	0
			12	6	1	4	1		

Continued on next page...

Continued from previous page...

Mol	Chain	Residues	Atoms					ZeroOcc	AltConf
			Total	C	N	O	S		
10	B	1	12	6	1	4	1	0	0

- Molecule 11 is GLYCEROL (three-letter code: GOL) (formula: C₃H₈O₃).



Mol	Chain	Residues	Atoms			ZeroOcc	AltConf
			Total	C	O		
11	B	1	6	3	3	0	0
11	C	1	6	3	3	0	0

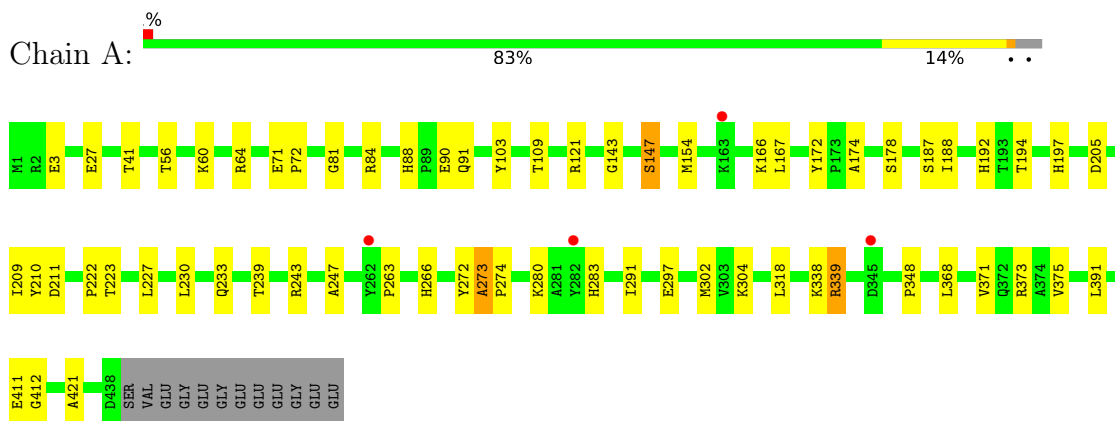
- Molecule 12 is water.

Mol	Chain	Residues	Atoms		ZeroOcc	AltConf
12	A	34	Total	O	0	0
			34	34		
12	B	27	Total	O	0	0
			27	27		
12	C	82	Total	O	0	0
			82	82		
12	D	5	Total	O	0	0
			5	5		
12	E	5	Total	O	0	0
			5	5		
12	F	8	Total	O	0	0
			8	8		

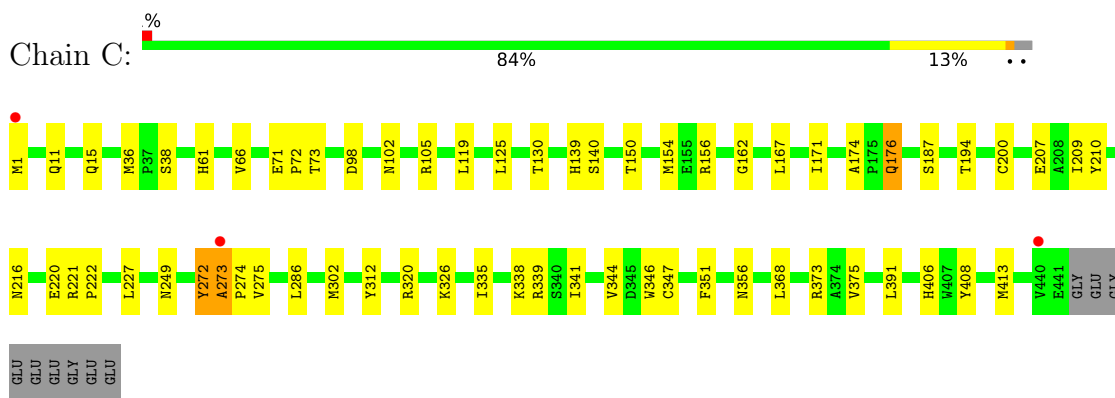
3 Residue-property plots [i](#)

These plots are drawn for all protein, RNA, DNA and oligosaccharide chains in the entry. The first graphic for a chain summarises the proportions of the various outlier classes displayed in the second graphic. The second graphic shows the sequence view annotated by issues in geometry and electron density. Residues are color-coded according to the number of geometric quality criteria for which they contain at least one outlier: green = 0, yellow = 1, orange = 2 and red = 3 or more. A red dot above a residue indicates a poor fit to the electron density ($RSRZ > 2$). Stretches of 2 or more consecutive residues without any outlier are shown as a green connector. Residues present in the sample, but not in the model, are shown in grey.

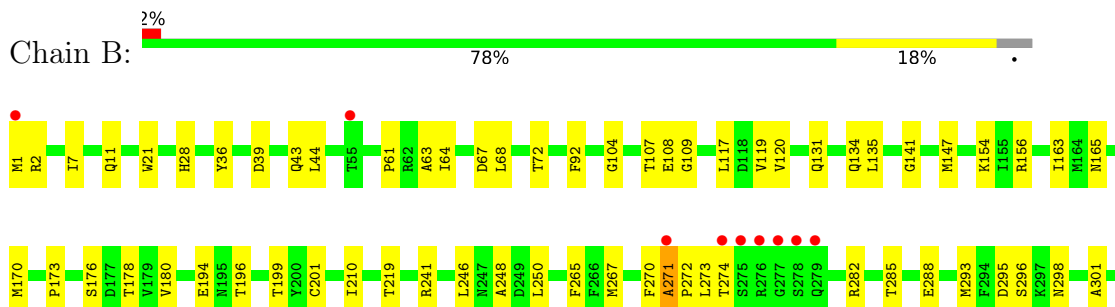
- Molecule 1: Tubulin alpha-1B chain



- Molecule 1: Tubulin alpha-1B chain

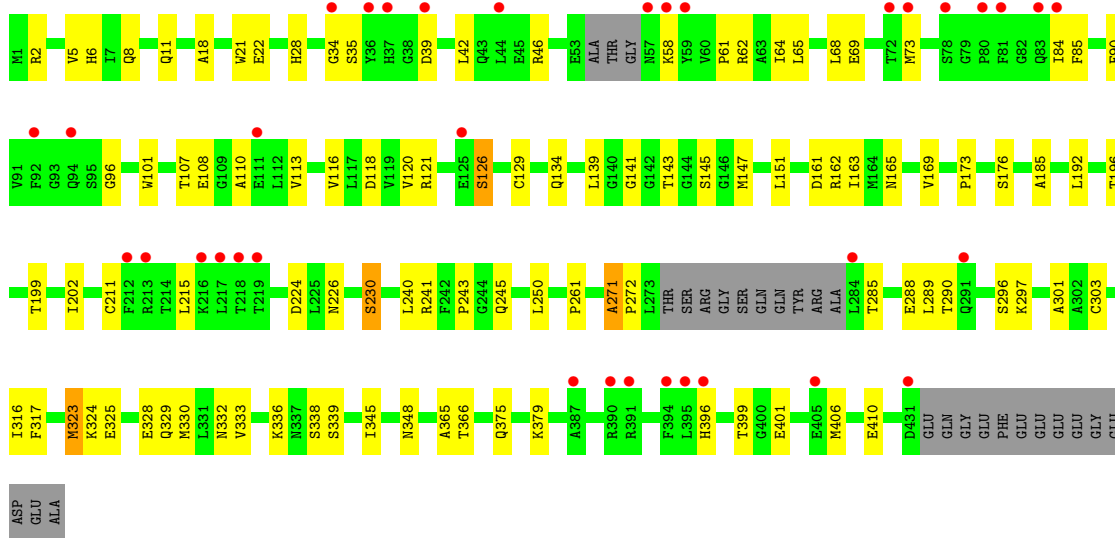


- Molecule 2: Tubulin beta chain

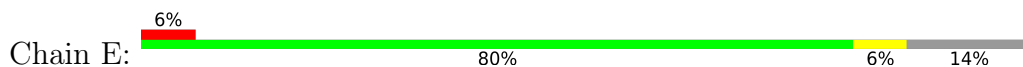




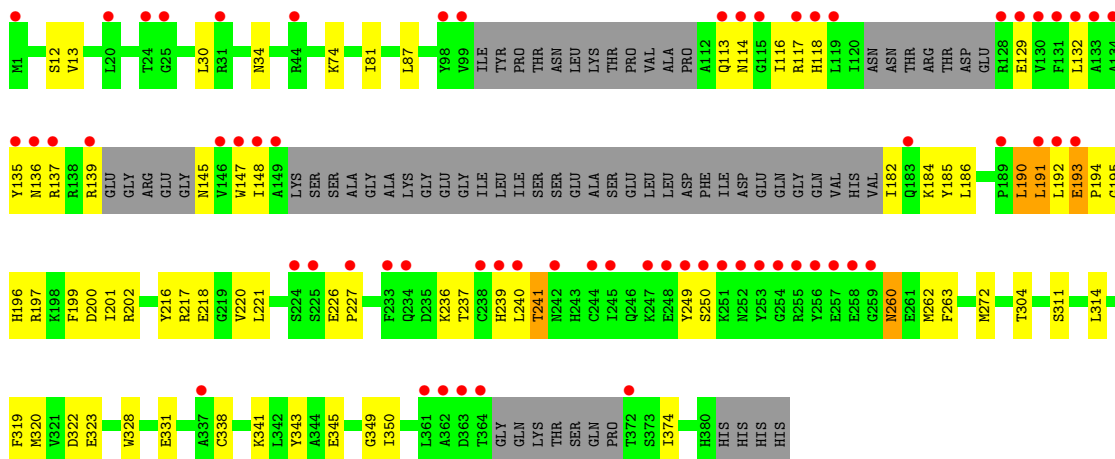
● Molecule 2: Tubulin beta chain



● Molecule 3: Stathmin-4



● Molecule 4: Tubulin tyrosine ligase



4 Data and refinement statistics

Property	Value	Source
Space group	P 21 21 21	Depositor
Cell constants a, b, c, α , β , γ	105.45Å 157.66Å 183.13Å 90.00° 90.00° 90.00°	Depositor
Resolution (Å)	48.27 – 2.75 48.27 – 2.75	Depositor EDS
% Data completeness (in resolution range)	98.7 (48.27-2.75) 98.7 (48.27-2.75)	Depositor EDS
R_{merge}	(Not available)	Depositor
R_{sym}	(Not available)	Depositor
$\langle I/\sigma(I) \rangle$ ¹	2.04 (at 2.73Å)	Xtrriage
Refinement program	PHENIX 1.11.1_2575	Depositor
R, R_{free}	0.194 , 0.235 0.194 , 0.235	Depositor DCC
R_{free} test set	4015 reflections (5.06%)	wwPDB-VP
Wilson B-factor (Å ²)	45.4	Xtrriage
Anisotropy	0.024	Xtrriage
Bulk solvent k_{sol} (e/Å ³), B_{sol} (Å ²)	0.30 , 47.1	EDS
L-test for twinning ²	$\langle L \rangle = 0.50$, $\langle L^2 \rangle = 0.33$	Xtrriage
Estimated twinning fraction	No twinning to report.	Xtrriage
F_o, F_c correlation	0.93	EDS
Total number of atoms	17583	wwPDB-VP
Average B, all atoms (Å ²)	59.0	wwPDB-VP

Xtrriage's analysis on translational NCS is as follows: *The largest off-origin peak in the Patterson function is 2.46% of the height of the origin peak. No significant pseudotranslation is detected.*

¹Intensities estimated from amplitudes.

²Theoretical values of $\langle |L| \rangle$, $\langle L^2 \rangle$ for acentric reflections are 0.5, 0.333 respectively for untwinned datasets, and 0.375, 0.2 for perfectly twinned datasets.

5 Model quality [i](#)

5.1 Standard geometry [i](#)

Bond lengths and bond angles in the following residue types are not validated in this section: GTP, GOL, CA, GDP, MG, MES, DO6

The Z score for a bond length (or angle) is the number of standard deviations the observed value is removed from the expected value. A bond length (or angle) with $|Z| > 5$ is considered an outlier worth inspection. RMSZ is the root-mean-square of all Z scores of the bond lengths (or angles).

Mol	Chain	Bond lengths		Bond angles	
		RMSZ	# Z >5	RMSZ	# Z >5
1	A	0.27	0/3514	0.49	1/4770 (0.0%)
1	C	0.28	0/3552	0.48	1/4822 (0.0%)
2	B	0.27	0/3451	0.48	1/4674 (0.0%)
2	D	0.27	0/3374	0.48	0/4568
3	E	0.25	0/1041	0.37	0/1382
4	F	0.27	0/2674	0.48	0/3609
All	All	0.27	0/17606	0.48	3/23825 (0.0%)

There are no bond length outliers.

All (3) bond angle outliers are listed below:

Mol	Chain	Res	Type	Atoms	Z	Observed(°)	Ideal(°)
2	B	270	PHE	C-N-CA	6.30	137.45	121.70
1	A	272	TYR	C-N-CA	6.23	137.27	121.70
1	C	272	TYR	C-N-CA	5.62	135.76	121.70

There are no chirality outliers.

There are no planarity outliers.

5.2 Too-close contacts [i](#)

In the following table, the Non-H and H(model) columns list the number of non-hydrogen atoms and hydrogen atoms in the chain respectively. The H(added) column lists the number of hydrogen atoms added and optimized by MolProbity. The Clashes column lists the number of clashes within the asymmetric unit, whereas Symm-Clashes lists symmetry-related clashes.

Mol	Chain	Non-H	H(model)	H(added)	Clashes	Symm-Clashes
1	A	3430	0	3345	39	0
1	C	3462	0	3373	44	0

Continued on next page...

Continued from previous page...

Mol	Chain	Non-H	H(model)	H(added)	Clashes	Symm-Clashes
2	B	3376	0	3257	49	0
2	D	3297	0	3175	64	0
3	E	1026	0	1042	6	0
4	F	2615	0	2598	50	0
5	A	32	0	12	0	0
5	C	32	0	12	2	0
6	A	1	0	0	0	0
6	B	1	0	0	0	0
6	C	1	0	0	0	0
6	D	1	0	0	0	0
7	A	1	0	0	0	0
7	C	1	0	0	0	0
8	B	27	0	0	1	0
8	D	27	0	0	0	0
9	B	28	0	12	1	0
9	D	28	0	12	3	0
10	B	24	0	24	2	0
11	B	6	0	8	0	0
11	C	6	0	8	1	0
12	A	34	0	0	0	0
12	B	27	0	0	0	0
12	C	82	0	0	0	0
12	D	5	0	0	0	0
12	E	5	0	0	0	0
12	F	8	0	0	0	0
All	All	17583	0	16878	241	0

The all-atom clashscore is defined as the number of clashes found per 1000 atoms (including hydrogen atoms). The all-atom clashscore for this structure is 7.

The worst 5 of 241 close contacts within the same asymmetric unit are listed below, sorted by their clash magnitude.

Atom-1	Atom-2	Interatomic distance (Å)	Clash overlap (Å)
2:D:271:ALA:HB2	2:D:365:ALA:H	1.29	0.97
1:A:273:ALA:HB2	1:A:375:VAL:H	1.36	0.90
2:B:271:ALA:HB2	2:B:365:ALA:H	1.44	0.83
1:A:88:HIS:HB3	1:A:91:GLN:HG3	1.67	0.75
2:B:295:ASP:HA	10:B:505:MES:H32	1.69	0.75

There are no symmetry-related clashes.

5.3 Torsion angles [i](#)

5.3.1 Protein backbone [i](#)

In the following table, the Percentiles column shows the percent Ramachandran outliers of the chain as a percentile score with respect to all X-ray entries followed by that with respect to entries of similar resolution.

The Analysed column shows the number of residues for which the backbone conformation was analysed, and the total number of residues.

Mol	Chain	Analysed	Favoured	Allowed	Outliers	Percentiles	
1	A	438/450 (97%)	424 (97%)	13 (3%)	1 (0%)	47	69
1	C	443/450 (98%)	428 (97%)	14 (3%)	1 (0%)	47	69
2	B	427/445 (96%)	415 (97%)	11 (3%)	1 (0%)	47	69
2	D	413/445 (93%)	400 (97%)	12 (3%)	1 (0%)	47	69
3	E	121/143 (85%)	120 (99%)	1 (1%)	0	100	100
4	F	305/384 (79%)	285 (93%)	17 (6%)	3 (1%)	15	28
All	All	2147/2317 (93%)	2072 (96%)	68 (3%)	7 (0%)	41	61

5 of 7 Ramachandran outliers are listed below:

Mol	Chain	Res	Type
1	A	273	ALA
2	B	271	ALA
1	C	273	ALA
2	D	271	ALA
4	F	190	LEU

5.3.2 Protein sidechains [i](#)

In the following table, the Percentiles column shows the percent sidechain outliers of the chain as a percentile score with respect to all X-ray entries followed by that with respect to entries of similar resolution.

The Analysed column shows the number of residues for which the sidechain conformation was analysed, and the total number of residues.

Mol	Chain	Analysed	Rotameric	Outliers	Percentiles	
1	A	371/378 (98%)	365 (98%)	6 (2%)	62	78
1	C	376/378 (100%)	372 (99%)	4 (1%)	73	84
2	B	371/383 (97%)	366 (99%)	5 (1%)	69	82

Continued on next page...

Continued from previous page...

Mol	Chain	Analysed	Rotameric	Outliers	Percentiles	
2	D	364/383 (95%)	357 (98%)	7 (2%)	57	74
3	E	112/127 (88%)	111 (99%)	1 (1%)	78	87
4	F	286/342 (84%)	277 (97%)	9 (3%)	40	60
All	All	1880/1991 (94%)	1848 (98%)	32 (2%)	60	76

5 of 32 residues with a non-rotameric sidechain are listed below:

Mol	Chain	Res	Type
4	F	186	LEU
4	F	191	LEU
1	C	176	GLN
1	C	38	SER
4	F	241	THR

Sometimes sidechains can be flipped to improve hydrogen bonding and reduce clashes. 5 of 6 such sidechains are listed below:

Mol	Chain	Res	Type
4	F	34	ASN
4	F	260	ASN
4	F	380	HIS
2	D	6	HIS
2	B	375	GLN

5.3.3 RNA [i](#)

There are no RNA molecules in this entry.

5.4 Non-standard residues in protein, DNA, RNA chains [i](#)

There are no non-standard protein/DNA/RNA residues in this entry.

5.5 Carbohydrates [i](#)

There are no monosaccharides in this entry.

5.6 Ligand geometry

Of 16 ligands modelled in this entry, 6 are monoatomic - leaving 10 for Mogul analysis.

In the following table, the Counts columns list the number of bonds (or angles) for which Mogul statistics could be retrieved, the number of bonds (or angles) that are observed in the model and the number of bonds (or angles) that are defined in the Chemical Component Dictionary. The Link column lists molecule types, if any, to which the group is linked. The Z score for a bond length (or angle) is the number of standard deviations the observed value is removed from the expected value. A bond length (or angle) with $|Z| > 2$ is considered an outlier worth inspection. RMSZ is the root-mean-square of all Z scores of the bond lengths (or angles).

Mol	Type	Chain	Res	Link	Bond lengths			Bond angles		
					Counts	RMSZ	# Z > 2	Counts	RMSZ	# Z > 2
8	DO6	B	501	-	24,29,29	0.58	1 (4%)	32,42,42	0.48	0
11	GOL	C	504	-	5,5,5	0.37	0	5,5,5	0.29	0
11	GOL	B	506	-	5,5,5	0.36	0	5,5,5	0.29	0
9	GDP	B	503	6	24,30,30	0.96	1 (4%)	30,47,47	1.03	3 (10%)
5	GTP	A	501	6	26,34,34	1.13	2 (7%)	32,54,54	1.42	6 (18%)
10	MES	B	505	-	12,12,12	2.35	1 (8%)	14,16,16	2.03	3 (21%)
5	GTP	C	501	6	26,34,34	1.12	1 (3%)	32,54,54	1.49	5 (15%)
8	DO6	D	501	-	24,29,29	0.62	1 (4%)	32,42,42	0.36	0
10	MES	B	504	-	12,12,12	2.26	1 (8%)	14,16,16	2.09	5 (35%)
9	GDP	D	503	6	24,30,30	0.93	1 (4%)	30,47,47	1.16	4 (13%)

In the following table, the Chirals column lists the number of chiral outliers, the number of chiral centers analysed, the number of these observed in the model and the number defined in the Chemical Component Dictionary. Similar counts are reported in the Torsion and Rings columns. '-' means no outliers of that kind were identified.

Mol	Type	Chain	Res	Link	Chirals	Torsions	Rings
8	DO6	B	501	-	-	0/13/16/16	0/3/3/3
11	GOL	C	504	-	-	4/4/4/4	-
11	GOL	B	506	-	-	2/4/4/4	-
9	GDP	B	503	6	-	3/12/32/32	0/3/3/3
5	GTP	A	501	6	-	4/18/38/38	0/3/3/3
10	MES	B	505	-	-	3/6/14/14	0/1/1/1
5	GTP	C	501	6	-	2/18/38/38	0/3/3/3
8	DO6	D	501	-	-	0/13/16/16	0/3/3/3
10	MES	B	504	-	-	4/6/14/14	0/1/1/1
9	GDP	D	503	6	-	6/12/32/32	0/3/3/3

The worst 5 of 9 bond length outliers are listed below:

Mol	Chain	Res	Type	Atoms	Z	Observed(Å)	Ideal(Å)
10	B	505	MES	C8-S	-7.88	1.66	1.77
10	B	504	MES	C8-S	-7.57	1.66	1.77
5	A	501	GTP	C5-C6	-3.94	1.39	1.47
5	C	501	GTP	C5-C6	-3.76	1.39	1.47
9	B	503	GDP	C6-N1	-2.41	1.34	1.37

The worst 5 of 26 bond angle outliers are listed below:

Mol	Chain	Res	Type	Atoms	Z	Observed(°)	Ideal(°)
10	B	505	MES	C5-N4-C3	5.57	121.37	108.83
10	B	504	MES	C5-N4-C3	4.28	118.46	108.83
5	C	501	GTP	PA-O3A-PB	-3.49	120.87	132.83
5	C	501	GTP	C8-N7-C5	3.22	109.13	102.99
5	A	501	GTP	C8-N7-C5	3.07	108.83	102.99

There are no chirality outliers.

5 of 28 torsion outliers are listed below:

Mol	Chain	Res	Type	Atoms
5	A	501	GTP	PB-O3B-PG-O2G
5	A	501	GTP	C5'-O5'-PA-O1A
5	A	501	GTP	C5'-O5'-PA-O2A
9	B	503	GDP	C5'-O5'-PA-O1A
9	B	503	GDP	C5'-O5'-PA-O2A

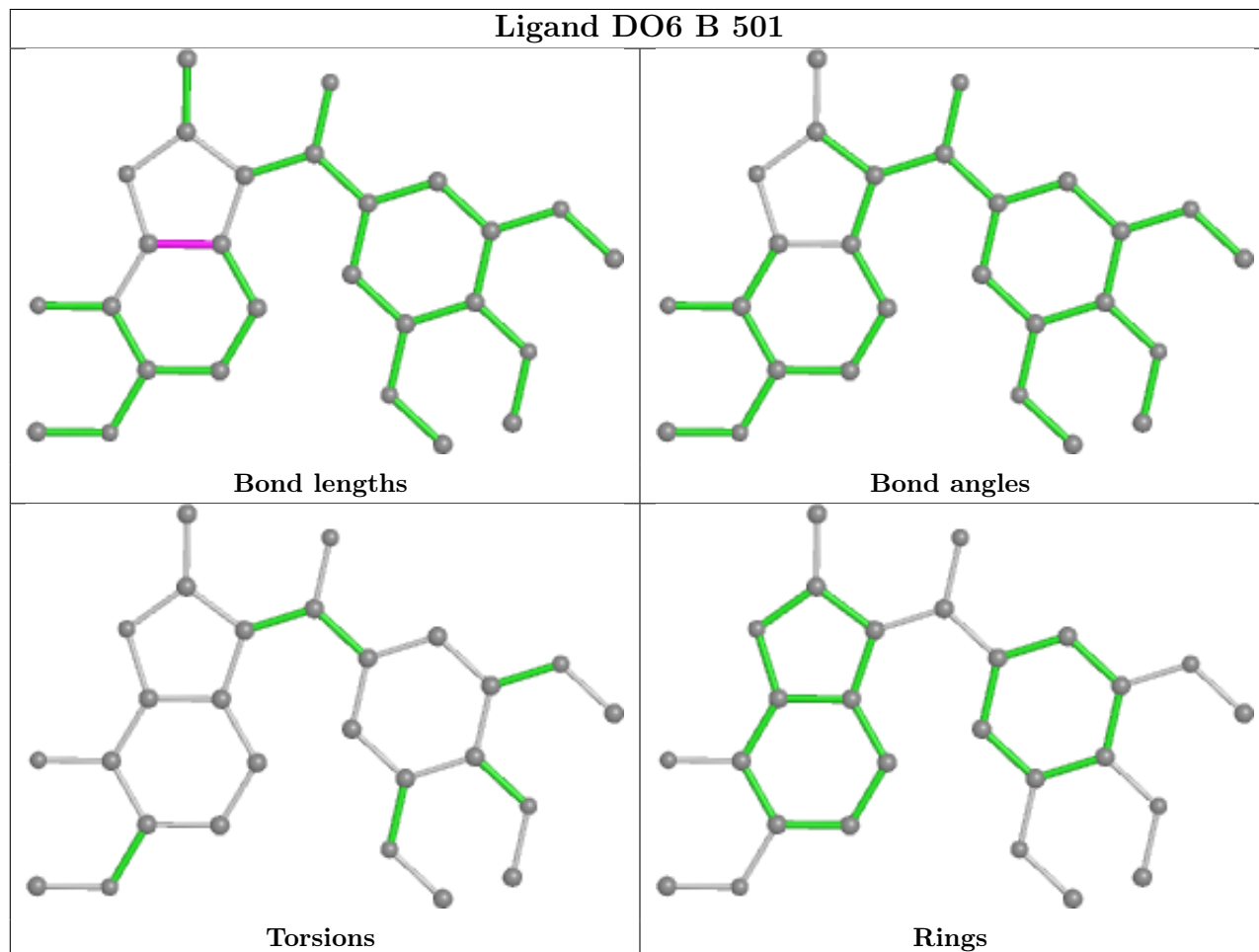
There are no ring outliers.

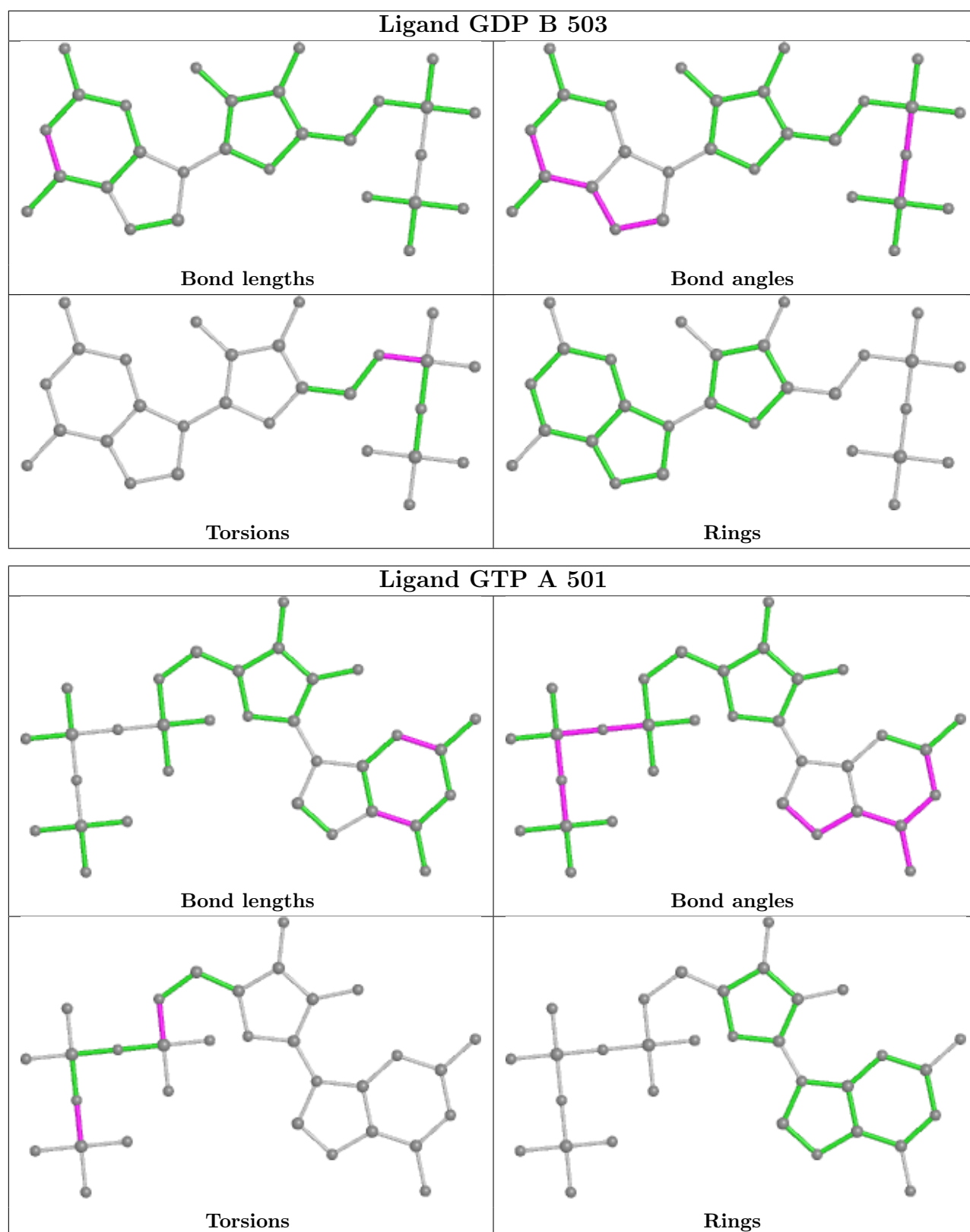
6 monomers are involved in 10 short contacts:

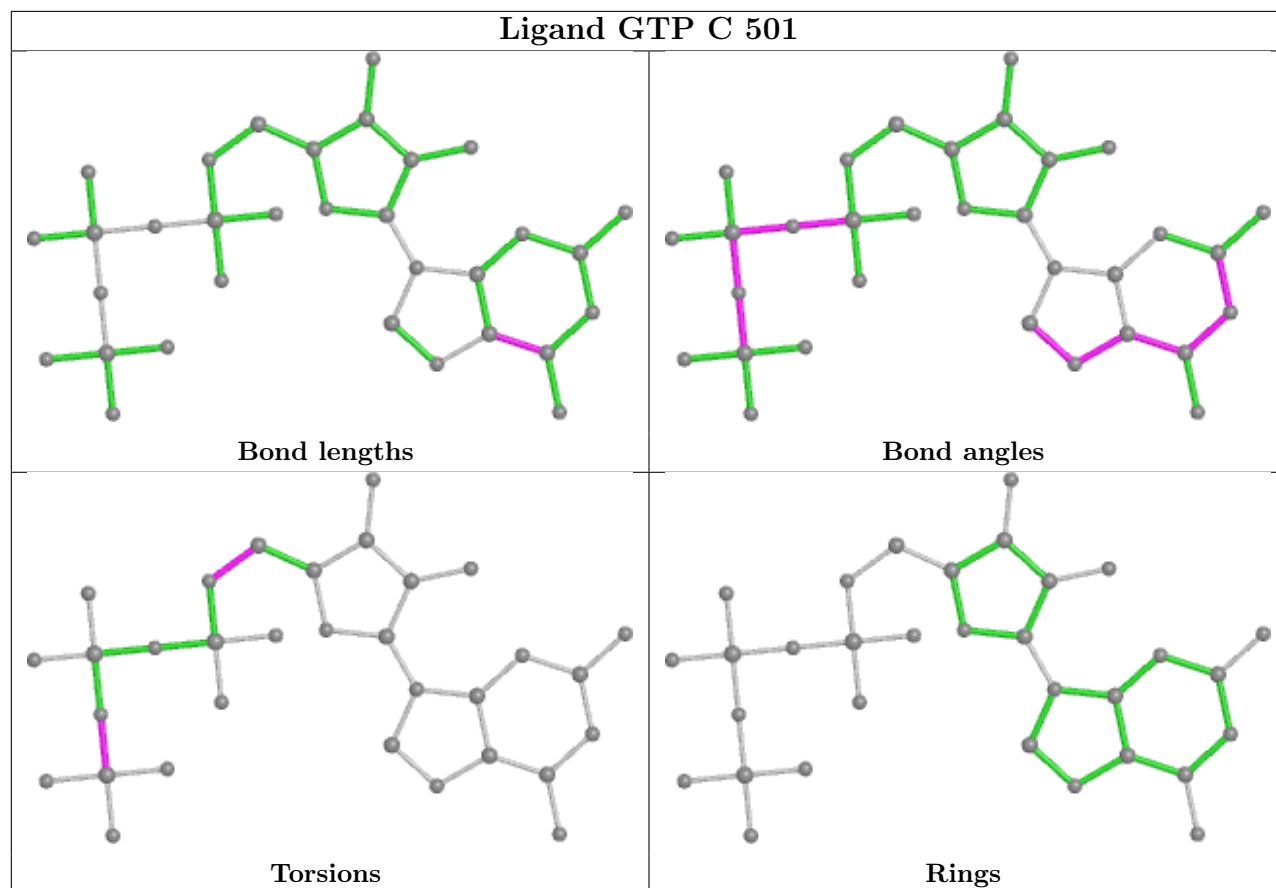
Mol	Chain	Res	Type	Clashes	Symm-Clashes
8	B	501	DO6	1	0
11	C	504	GOL	1	0
9	B	503	GDP	1	0
10	B	505	MES	2	0
5	C	501	GTP	2	0
9	D	503	GDP	3	0

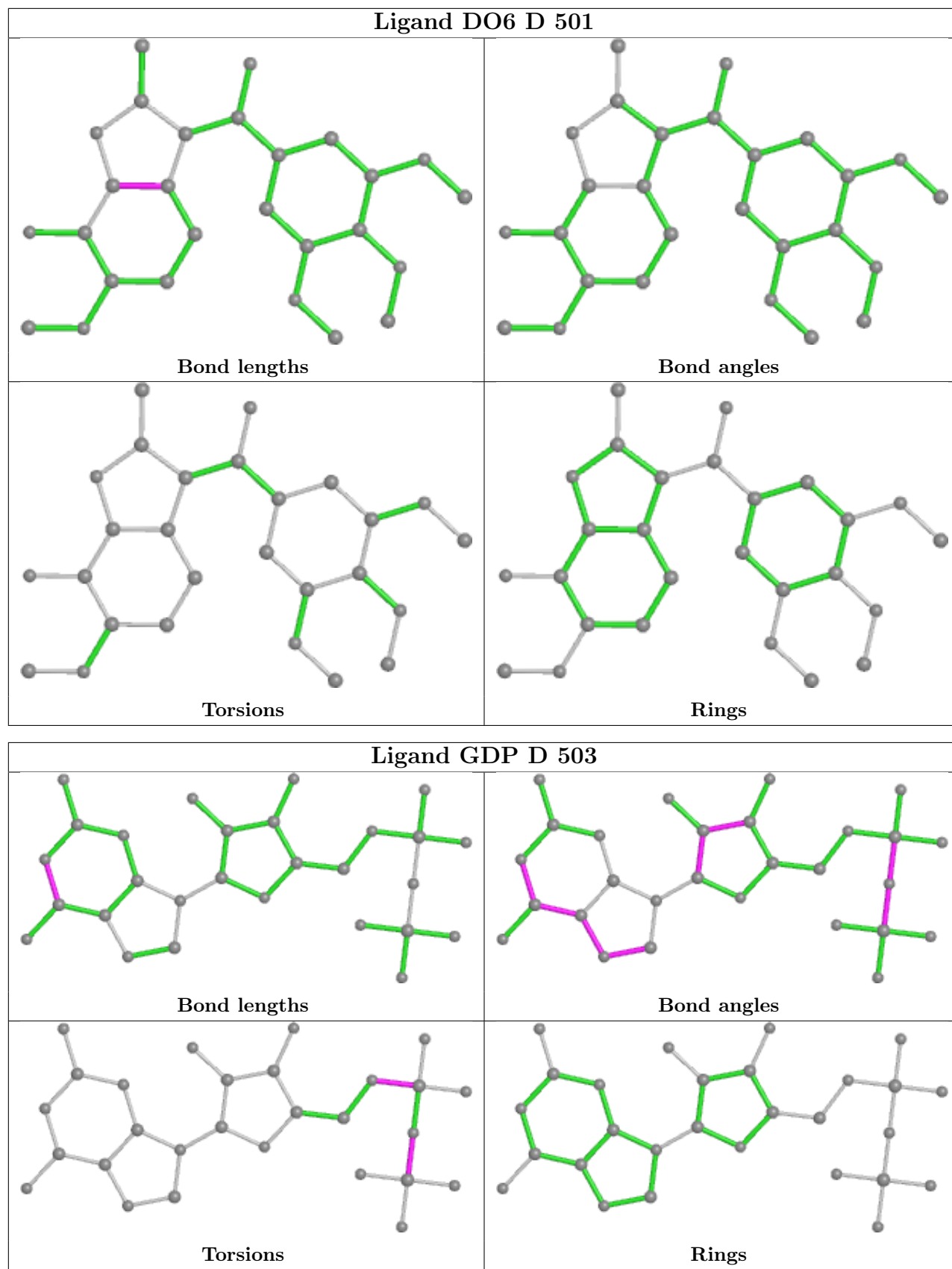
The following is a two-dimensional graphical depiction of Mogul quality analysis of bond lengths, bond angles, torsion angles, and ring geometry for all instances of the Ligand of Interest. In addition, ligands with molecular weight > 250 and outliers as shown on the validation Tables will also be included. For torsion angles, if less than 5% of the Mogul distribution of torsion angles is within 10 degrees of the torsion angle in question, then that torsion angle is considered an outlier.

Any bond that is central to one or more torsion angles identified as an outlier by Mogul will be highlighted in the graph. For rings, the root-mean-square deviation (RMSD) between the ring in question and similar rings identified by Mogul is calculated over all ring torsion angles. If the average RMSD is greater than 60 degrees and the minimal RMSD between the ring in question and any Mogul-identified rings is also greater than 60 degrees, then that ring is considered an outlier. The outliers are highlighted in purple. The color gray indicates Mogul did not find sufficient equivalents in the CSD to analyse the geometry.









5.7 Other polymers [i](#)

There are no such residues in this entry.

5.8 Polymer linkage issues [i](#)

There are no chain breaks in this entry.

6 Fit of model and data [i](#)

6.1 Protein, DNA and RNA chains [i](#)

In the following table, the column labelled ‘#RSRZ > 2’ contains the number (and percentage) of RSRZ outliers, followed by percent RSRZ outliers for the chain as percentile scores relative to all X-ray entries and entries of similar resolution. The OWAB column contains the minimum, median, 95th percentile and maximum values of the occupancy-weighted average B-factor per residue. The column labelled ‘Q < 0.9’ lists the number of (and percentage) of residues with an average occupancy less than 0.9.

Mol	Chain	Analysed	<RSRZ>	#RSRZ>2	OWAB(Å ²)	Q<0.9
1	A	438/450 (97%)	-0.16	4 (0%) 84 88	27, 47, 77, 110	0
1	C	441/450 (98%)	-0.29	3 (0%) 87 90	18, 34, 65, 146	0
2	B	429/445 (96%)	-0.06	10 (2%) 60 67	20, 44, 90, 137	3 (0%)
2	D	418/445 (93%)	0.43	35 (8%) 11 12	30, 78, 117, 175	2 (0%)
3	E	123/143 (86%)	0.39	9 (7%) 15 17	35, 67, 115, 141	0
4	F	317/384 (82%)	0.77	64 (20%) 1 1	38, 78, 137, 175	0
All	All	2166/2317 (93%)	0.11	125 (5%) 23 26	18, 54, 113, 175	5 (0%)

The worst 5 of 125 RSRZ outliers are listed below:

Mol	Chain	Res	Type	RSRZ
1	C	1	MET	7.8
4	F	132	LEU	5.8
2	D	92	PHE	5.6
2	D	37	HIS	5.4
2	B	277	GLY	5.3

6.2 Non-standard residues in protein, DNA, RNA chains [i](#)

There are no non-standard protein/DNA/RNA residues in this entry.

6.3 Carbohydrates [i](#)

There are no monosaccharides in this entry.

6.4 Ligands

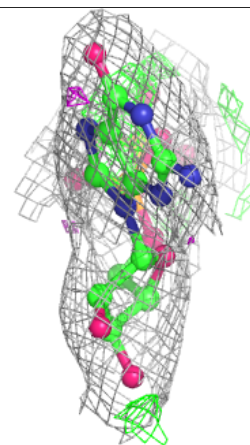
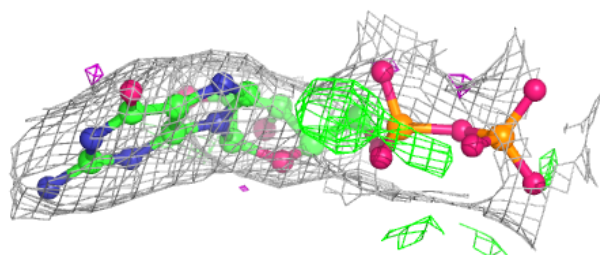
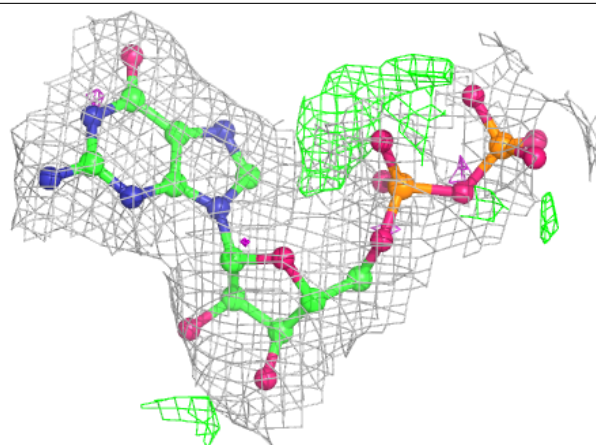
In the following table, the Atoms column lists the number of modelled atoms in the group and the number defined in the chemical component dictionary. The B-factors column lists the minimum, median, 95th percentile and maximum values of B factors of atoms in the group. The column labelled 'Q<0.9' lists the number of atoms with occupancy less than 0.9.

Mol	Type	Chain	Res	Atoms	RSCC	RSR	B-factors(Å ²)	Q<0.9
11	GOL	B	506	6/6	0.77	0.32	77,78,78,78	0
10	MES	B	505	12/12	0.89	0.28	83,90,115,115	0
11	GOL	C	504	6/6	0.90	0.26	70,72,75,77	0
9	GDP	D	503	28/28	0.92	0.14	51,62,77,79	0
6	MG	A	502	1/1	0.92	0.41	31,31,31,31	0
6	MG	C	502	1/1	0.94	0.43	32,32,32,32	0
6	MG	B	502	1/1	0.94	0.35	27,27,27,27	0
10	MES	B	504	12/12	0.94	0.17	45,59,82,83	0
7	CA	A	503	1/1	0.95	0.08	82,82,82,82	0
6	MG	D	502	1/1	0.95	0.11	68,68,68,68	0
8	DO6	B	501	27/27	0.96	0.20	31,40,56,58	0
5	GTP	A	501	32/32	0.97	0.19	24,30,37,41	0
8	DO6	D	501	27/27	0.97	0.17	32,47,62,65	0
9	GDP	B	503	28/28	0.97	0.17	12,30,35,38	0
7	CA	C	503	1/1	0.97	0.10	55,55,55,55	0
5	GTP	C	501	32/32	0.98	0.17	17,26,32,38	0

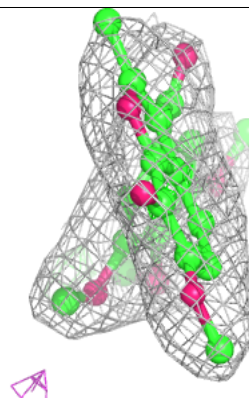
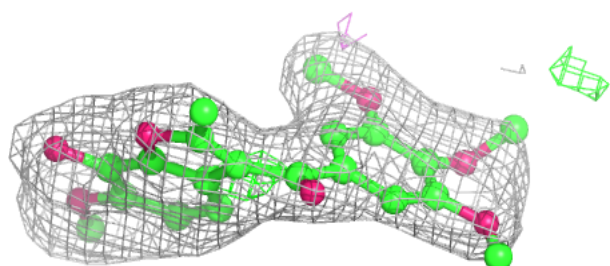
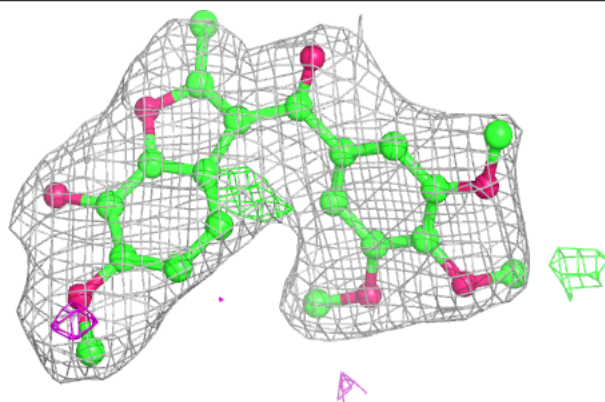
The following is a graphical depiction of the model fit to experimental electron density of all instances of the Ligand of Interest. In addition, ligands with molecular weight > 250 and outliers as shown on the geometry validation Tables will also be included. Each fit is shown from different orientation to approximate a three-dimensional view.

Electron density around GDP D 503:

$2mF_o-DF_c$ (at 0.7 rmsd) in gray
 mF_o-DF_c (at 3 rmsd) in purple (negative)
and green (positive)

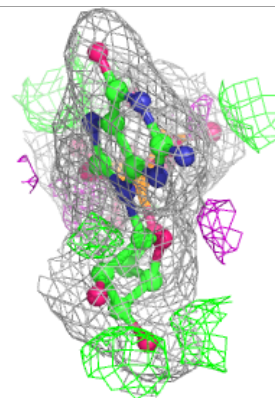
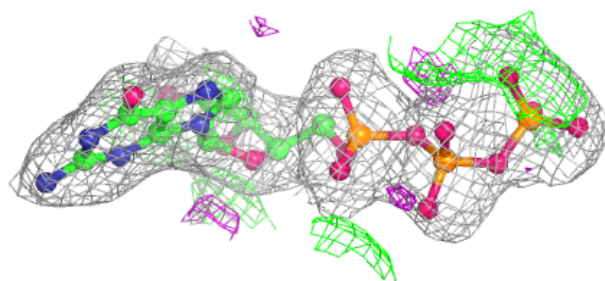
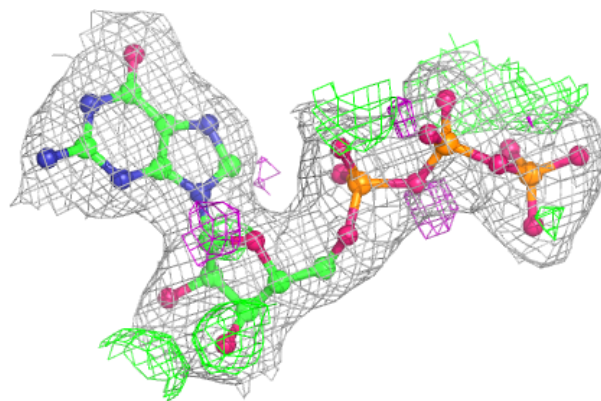
**Electron density around DO6 B 501:**

$2mF_o-DF_c$ (at 0.7 rmsd) in gray
 mF_o-DF_c (at 3 rmsd) in purple (negative)
and green (positive)

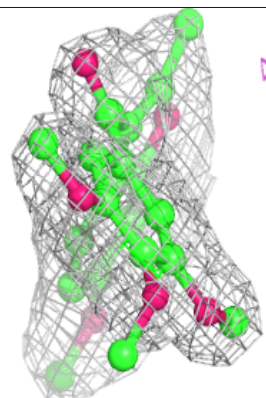
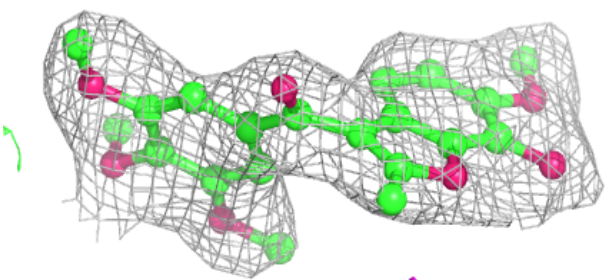
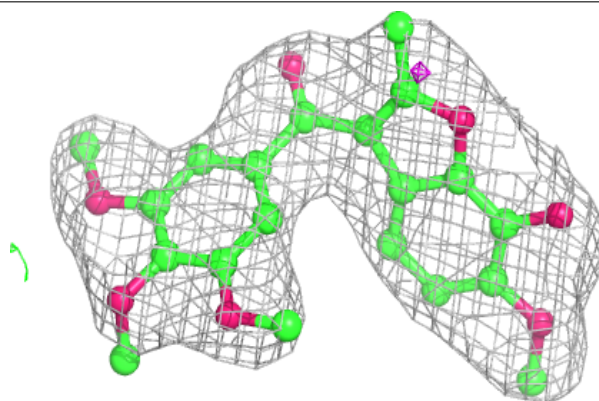


Electron density around GTP A 501:

$2mF_o-DF_c$ (at 0.7 rmsd) in gray
 mF_o-DF_c (at 3 rmsd) in purple (negative)
and green (positive)

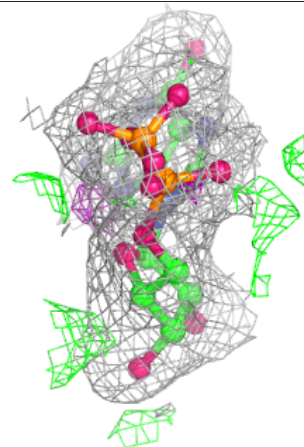
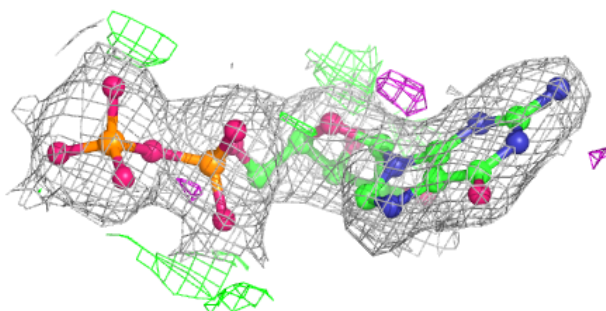
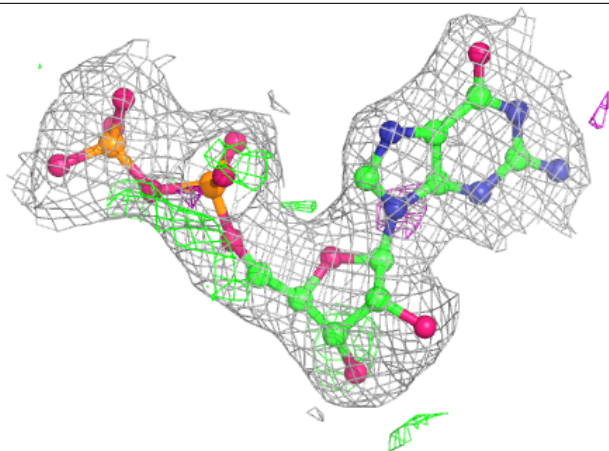
**Electron density around DO6 D 501:**

$2mF_o-DF_c$ (at 0.7 rmsd) in gray
 mF_o-DF_c (at 3 rmsd) in purple (negative)
and green (positive)

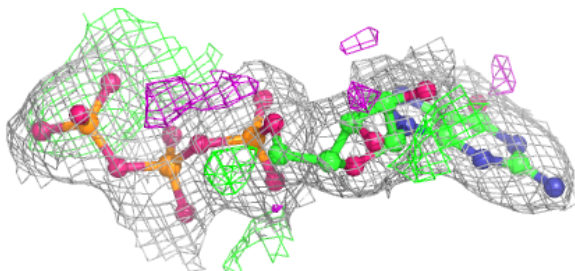
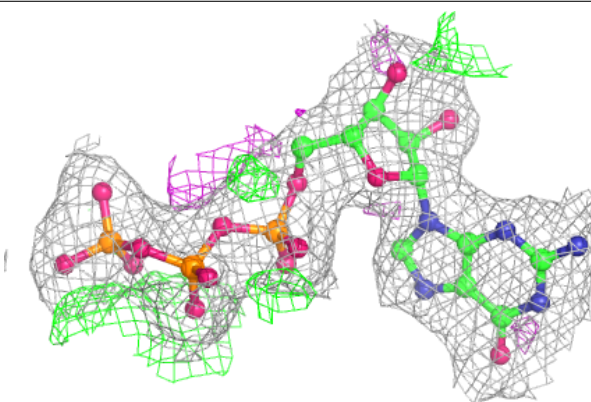


Electron density around GDP B 503:

$2mF_o-DF_c$ (at 0.7 rmsd) in gray
 mF_o-DF_c (at 3 rmsd) in purple (negative)
and green (positive)

**Electron density around GTP C 501:**

$2mF_o-DF_c$ (at 0.7 rmsd) in gray
 mF_o-DF_c (at 3 rmsd) in purple (negative)
and green (positive)



6.5 Other polymers [i](#)

There are no such residues in this entry.