



# Full wwPDB X-ray Structure Validation Report ⓘ

May 23, 2020 – 08:45 am BST

PDB ID : 3KLP  
Title : 17beta-HSD1 in complex with A-diol  
Authors : Mazumdar, M.; Lin, S.-X.  
Deposited on : 2009-11-08  
Resolution : 2.50 Å(reported)

This is a Full wwPDB X-ray Structure Validation Report for a publicly released PDB entry.

We welcome your comments at [validation@mail.wwpdb.org](mailto:validation@mail.wwpdb.org)

A user guide is available at

<https://www.wwpdb.org/validation/2017/XrayValidationReportHelp>

with specific help available everywhere you see the ⓘ symbol.

---

The following versions of software and data (see [references ⓘ](#)) were used in the production of this report:

MolProbity : 4.02b-467  
Mogul : 1.8.5 (274361), CSD as541be (2020)  
Xtriage (Phenix) : 1.13  
EDS : 2.11  
buster-report : 1.1.7 (2018)  
Percentile statistics : 20191225.v01 (using entries in the PDB archive December 25th 2019)  
Refmac : 5.8.0158  
CCP4 : 7.0.044 (Gargrove)  
Ideal geometry (proteins) : Engh & Huber (2001)  
Ideal geometry (DNA, RNA) : Parkinson et al. (1996)  
Validation Pipeline (wwPDB-VP) : 2.11

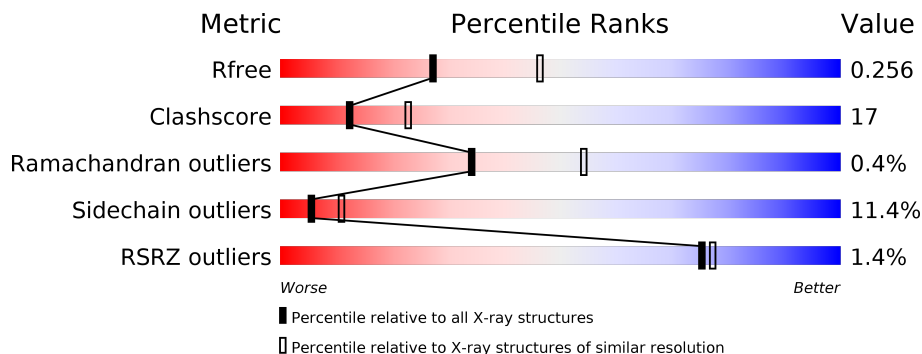
# 1 Overall quality at a glance

The following experimental techniques were used to determine the structure:

*X-RAY DIFFRACTION*

The reported resolution of this entry is 2.50 Å.

Percentile scores (ranging between 0-100) for global validation metrics of the entry are shown in the following graphic. The table shows the number of entries on which the scores are based.



Metric	Whole archive (#Entries)	Similar resolution (#Entries, resolution range(Å))
$R_{free}$	130704	4661 (2.50-2.50)
Clashscore	141614	5346 (2.50-2.50)
Ramachandran outliers	138981	5231 (2.50-2.50)
Sidechain outliers	138945	5233 (2.50-2.50)
RSRZ outliers	127900	4559 (2.50-2.50)

The table below summarises the geometric issues observed across the polymeric chains and their fit to the electron density. The red, orange, yellow and green segments on the lower bar indicate the fraction of residues that contain outliers for  $\geq 3$ , 2, 1 and 0 types of geometric quality criteria respectively. A grey segment represents the fraction of residues that are not modelled. The numeric value for each fraction is indicated below the corresponding segment, with a dot representing fractions  $\leq 5\%$ . The upper red bar (where present) indicates the fraction of residues that have poor fit to the electron density. The numeric value is given above the bar.

Mol	Chain	Length	Quality of chain
1	X	327	

## 2 Entry composition [i](#)

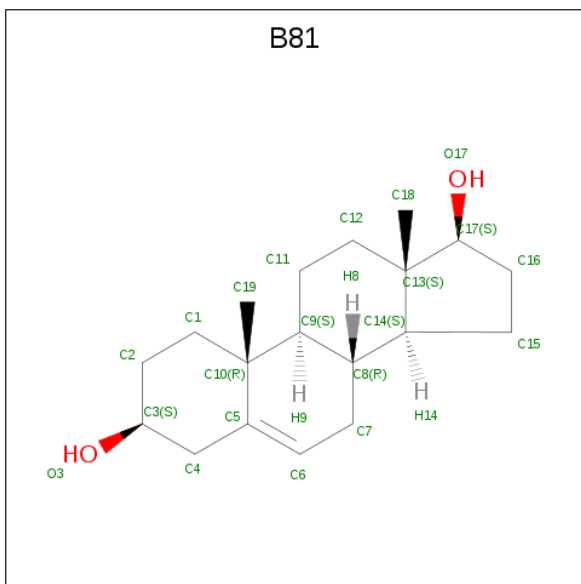
There are 3 unique types of molecules in this entry. The entry contains 2161 atoms, of which 0 are hydrogens and 0 are deuteriums.

In the tables below, the ZeroOcc column contains the number of atoms modelled with zero occupancy, the AltConf column contains the number of residues with at least one atom in alternate conformation and the Trace column contains the number of residues modelled with at most 2 atoms.

- Molecule 1 is a protein called Estradiol 17-beta-dehydrogenase 1.

Mol	Chain	Residues	Atoms					ZeroOcc	AltConf	Trace
			Total	C	N	O	S			
1	X	276	2113	1339	376	387	11	0	1	0

- Molecule 2 is (3alpha,8alpha,17beta)-androst-5-ene-3,17-diol (three-letter code: B81) (formula: C<sub>19</sub>H<sub>30</sub>O<sub>2</sub>).



Mol	Chain	Residues	Atoms			ZeroOcc	AltConf
			Total	C	O		
2	X	1	21	19	2	0	0

- Molecule 3 is water.

Mol	Chain	Residues	Atoms		ZeroOcc	AltConf
3	X	27	Total	O	0	0
			27	27		



## 4 Data and refinement statistics

Property	Value	Source
Space group	C 1 2 1	Depositor
Cell constants a, b, c, $\alpha$ , $\beta$ , $\gamma$	122.44Å 44.02Å 60.98Å 90.00° 99.70° 90.00°	Depositor
Resolution (Å)	18.65 – 2.50 18.65 – 2.50	Depositor EDS
% Data completeness (in resolution range)	100.0 (18.65-2.50) 82.0 (18.65-2.50)	Depositor EDS
$R_{merge}$	(Not available)	Depositor
$R_{sym}$	(Not available)	Depositor
$\langle I/\sigma(I) \rangle$ <sup>1</sup>	2.23 (at 2.49Å)	Xtrriage
Refinement program	REFMAC 5.2.0005	Depositor
R, $R_{free}$	0.169 , 0.254 0.170 , 0.256	Depositor DCC
$R_{free}$ test set	463 reflections (5.01%)	wwPDB-VP
Wilson B-factor (Å <sup>2</sup> )	34.7	Xtrriage
Anisotropy	0.135	Xtrriage
Bulk solvent $k_{sol}$ (e/Å <sup>3</sup> ), $B_{sol}$ (Å <sup>2</sup> )	0.40 , 60.3	EDS
L-test for twinning <sup>2</sup>	$\langle  L  \rangle = 0.48$ , $\langle L^2 \rangle = 0.31$	Xtrriage
Estimated twinning fraction	No twinning to report.	Xtrriage
$F_o, F_c$ correlation	0.95	EDS
Total number of atoms	2161	wwPDB-VP
Average B, all atoms (Å <sup>2</sup> )	34.0	wwPDB-VP

Xtrriage's analysis on translational NCS is as follows: *The largest off-origin peak in the Patterson function is 7.96% of the height of the origin peak. No significant pseudotranslation is detected.*

<sup>1</sup>Intensities estimated from amplitudes.

<sup>2</sup>Theoretical values of  $\langle |L| \rangle$ ,  $\langle L^2 \rangle$  for acentric reflections are 0.5, 0.333 respectively for untwinned datasets, and 0.375, 0.2 for perfectly twinned datasets.

## 5 Model quality [i](#)

### 5.1 Standard geometry [i](#)

Bond lengths and bond angles in the following residue types are not validated in this section: B81

The Z score for a bond length (or angle) is the number of standard deviations the observed value is removed from the expected value. A bond length (or angle) with  $|Z| > 5$  is considered an outlier worth inspection. RMSZ is the root-mean-square of all Z scores of the bond lengths (or angles).

Mol	Chain	Bond lengths		Bond angles	
		RMSZ	# Z  >5	RMSZ	# Z  >5
1	X	1.31	6/2152 (0.3%)	1.26	11/2919 (0.4%)

All (6) bond length outliers are listed below:

Mol	Chain	Res	Type	Atoms	Z	Observed(Å)	Ideal(Å)
1	X	54	CYS	CB-SG	-5.82	1.72	1.81
1	X	257	GLU	CG-CD	5.62	1.60	1.51
1	X	140	THR	CB-CG2	-5.60	1.33	1.52
1	X	252	ARG	CB-CG	-5.44	1.37	1.52
1	X	228	GLU	CG-CD	5.34	1.59	1.51
1	X	215	PHE	CE2-CZ	5.09	1.47	1.37

All (11) bond angle outliers are listed below:

Mol	Chain	Res	Type	Atoms	Z	Observed(°)	Ideal(°)
1	X	120	ARG	NE-CZ-NH1	10.43	125.52	120.30
1	X	37[A]	ARG	NE-CZ-NH2	-8.09	116.25	120.30
1	X	120	ARG	NE-CZ-NH2	-7.20	116.70	120.30
1	X	244	LEU	CA-CB-CG	6.59	130.45	115.30
1	X	252	ARG	NE-CZ-NH1	-6.45	117.08	120.30
1	X	68	ASP	CB-CG-OD1	6.44	124.09	118.30
1	X	93	LEU	CA-CB-CG	6.14	129.43	115.30
1	X	262	LEU	CA-CB-CG	5.77	128.57	115.30
1	X	68	ASP	CB-CG-OD2	-5.66	113.21	118.30
1	X	76	ARG	NE-CZ-NH1	5.32	122.96	120.30
1	X	214	ARG	NE-CZ-NH2	-5.27	117.66	120.30

There are no chirality outliers.

There are no planarity outliers.

## 5.2 Too-close contacts [i](#)

In the following table, the Non-H and H(model) columns list the number of non-hydrogen atoms and hydrogen atoms in the chain respectively. The H(added) column lists the number of hydrogen atoms added and optimized by MolProbity. The Clashes column lists the number of clashes within the asymmetric unit, whereas Symm-Clashes lists symmetry related clashes.

Mol	Chain	Non-H	H(model)	H(added)	Clashes	Symm-Clashes
1	X	2113	0	2146	73	0
2	X	21	0	30	4	0
3	X	27	0	0	1	0
All	All	2161	0	2176	73	0

The all-atom clashscore is defined as the number of clashes found per 1000 atoms (including hydrogen atoms). The all-atom clashscore for this structure is 17.

All (73) close contacts within the same asymmetric unit are listed below, sorted by their clash magnitude.

Atom-1	Atom-2	Interatomic distance (Å)	Clash overlap (Å)
1:X:131:ARG:HB2	1:X:131:ARG:NH1	1.56	1.18
1:X:132:ARG:HB2	1:X:132:ARG:HH11	1.20	1.03
1:X:131:ARG:HH11	1:X:131:ARG:HB2	1.13	1.03
1:X:279:MET:HE1	2:X:328:B81:H18	1.47	0.97
1:X:131:ARG:CB	1:X:131:ARG:NH1	2.32	0.92
1:X:132:ARG:HB2	1:X:132:ARG:NH1	1.86	0.90
1:X:131:ARG:HH11	1:X:131:ARG:CB	1.83	0.90
1:X:132:ARG:CB	1:X:132:ARG:HH11	1.84	0.89
1:X:174:LEU:HB3	1:X:175:PRO:HD3	1.61	0.82
1:X:90:ASN:HA	1:X:140:THR:CG2	2.15	0.77
1:X:229:ALA:CB	1:X:258:ARG:HE	2.02	0.72
1:X:132:ARG:CG	1:X:132:ARG:HH11	2.02	0.72
1:X:258:ARG:HG3	1:X:258:ARG:HH11	1.55	0.71
1:X:90:ASN:OD1	1:X:140:THR:HG21	1.92	0.69
1:X:279:MET:CE	2:X:328:B81:H18	2.22	0.69
1:X:264:ARG:HA	1:X:267:LEU:HD12	1.77	0.65
1:X:64:LEU:HD23	1:X:64:LEU:C	2.19	0.63
1:X:229:ALA:HB2	1:X:258:ARG:HE	1.62	0.62
1:X:258:ARG:CG	1:X:258:ARG:HH11	2.12	0.62
1:X:131:ARG:HH11	1:X:131:ARG:CG	2.12	0.62
1:X:86:VAL:HG11	1:X:244:LEU:HD22	1.82	0.61
1:X:174:LEU:HB3	1:X:175:PRO:CD	2.32	0.59
1:X:222:SER:HB2	2:X:328:B81:H11A	1.84	0.58
1:X:132:ARG:O	1:X:132:ARG:HG2	2.03	0.57

*Continued on next page...*

*Continued from previous page...*

Atom-1	Atom-2	Interatomic distance (Å)	Clash overlap (Å)
1:X:257:GLU:HG2	1:X:260:LEU:HD22	1.86	0.57
1:X:131:ARG:CB	1:X:131:ARG:CZ	2.81	0.56
1:X:203:VAL:O	1:X:207:THR:HG22	2.06	0.55
1:X:101:ALA:HA	1:X:206:ARG:HB3	1.89	0.55
1:X:269:ASP:HB3	3:X:344:HOH:O	2.06	0.55
1:X:122:LEU:O	1:X:126:LEU:HB2	2.08	0.54
1:X:202:GLU:HB3	1:X:206:ARG:NH2	2.23	0.54
1:X:229:ALA:HB1	1:X:258:ARG:HE	1.70	0.54
1:X:42:GLN:NE2	1:X:46:TRP:HE1	2.05	0.54
1:X:258:ARG:HG3	1:X:258:ARG:NH1	2.22	0.53
1:X:259:PHE:CE1	2:X:328:B81:H15	2.43	0.53
1:X:132:ARG:CB	1:X:132:ARG:NH1	2.60	0.52
1:X:8:THR:O	1:X:90:ASN:HB3	2.10	0.50
1:X:241:LEU:O	1:X:245:ARG:HG3	2.12	0.50
1:X:263:LEU:O	1:X:267:LEU:HG	2.12	0.50
1:X:158:SER:O	1:X:161:ALA:HB3	2.11	0.49
1:X:201:GLU:OE1	1:X:202:GLU:HG3	2.12	0.49
1:X:21:ARG:HG3	1:X:21:ARG:O	2.11	0.49
1:X:100:GLU:H	1:X:100:GLU:CD	2.15	0.49
1:X:132:ARG:HG3	1:X:132:ARG:HH11	1.77	0.49
1:X:84:VAL:HG21	1:X:125:PHE:CE2	2.49	0.48
1:X:84:VAL:HG21	1:X:125:PHE:HE2	1.78	0.48
1:X:210:HIS:O	1:X:214:ARG:HG2	2.14	0.48
1:X:42:GLN:HE21	1:X:46:TRP:HE1	1.62	0.47
1:X:159:LYS:HA	1:X:159:LYS:HD3	1.67	0.47
1:X:93:LEU:HD12	1:X:110:VAL:HA	1.96	0.47
1:X:67:ARG:HG2	1:X:112:ASP:OD2	2.13	0.47
1:X:260:LEU:N	1:X:261:PRO:HD2	2.30	0.47
1:X:83:ARG:HB3	1:X:132:ARG:HH21	1.80	0.46
1:X:265:MET:SD	1:X:278:ALA:HB2	2.55	0.46
1:X:218:TYR:HD1	1:X:283:VAL:HG11	1.81	0.46
1:X:272:GLY:O	1:X:276:VAL:HG23	2.15	0.46
1:X:199:SER:HA	1:X:200:PRO:HD2	1.49	0.46
1:X:37[A]:ARG:HB2	1:X:37[A]:ARG:HE	1.52	0.45
1:X:248:LYS:HE3	1:X:248:LYS:HB3	1.83	0.44
1:X:64:LEU:CD2	1:X:64:LEU:C	2.86	0.44
1:X:173:LEU:O	1:X:174:LEU:C	2.55	0.44
1:X:202:GLU:O	1:X:205:ASP:HB2	2.18	0.44
1:X:132:ARG:CG	1:X:132:ARG:NH1	2.71	0.44
1:X:109:SER:O	1:X:113:VAL:HG23	2.17	0.43
1:X:122:LEU:O	1:X:126:LEU:N	2.41	0.42

*Continued on next page...*



Continued from previous page...

Atom-1	Atom-2	Interatomic distance (Å)	Clash overlap (Å)
1:X:189:HIS:CE1	1:X:230:ALA:HB3	2.54	0.42
1:X:76:ARG:HG2	1:X:76:ARG:HH11	1.85	0.42
1:X:166:CYS:SG	1:X:180:LEU:HD21	2.59	0.42
1:X:7:ILE:HD13	1:X:18:LEU:HD23	2.02	0.41
1:X:90:ASN:HA	1:X:140:THR:HG23	1.96	0.41
1:X:146:LEU:CD1	1:X:254:PHE:HE2	2.33	0.41
1:X:64:LEU:HD23	1:X:65:ASP:N	2.36	0.41
1:X:5:VAL:HA	1:X:86:VAL:O	2.22	0.40

There are no symmetry-related clashes.

## 5.3 Torsion angles [i](#)

### 5.3.1 Protein backbone [i](#)

In the following table, the Percentiles column shows the percent Ramachandran outliers of the chain as a percentile score with respect to all X-ray entries followed by that with respect to entries of similar resolution.

The Analysed column shows the number of residues for which the backbone conformation was analysed, and the total number of residues.

Mol	Chain	Analysed	Favoured	Allowed	Outliers	Percentiles
1	X	272/327 (83%)	249 (92%)	22 (8%)	1 (0%)	34 54

All (1) Ramachandran outliers are listed below:

Mol	Chain	Res	Type
1	X	174	LEU

### 5.3.2 Protein sidechains [i](#)

In the following table, the Percentiles column shows the percent sidechain outliers of the chain as a percentile score with respect to all X-ray entries followed by that with respect to entries of similar resolution.

The Analysed column shows the number of residues for which the sidechain conformation was analysed, and the total number of residues.

Mol	Chain	Analysed	Rotameric	Outliers	Percentiles
1	X	228/257 (89%)	202 (89%)	26 (11%)	5 11

All (26) residues with a non-rotameric sidechain are listed below:

Mol	Chain	Res	Type
1	X	12	SER
1	X	27	SER
1	X	28	GLN
1	X	36	LEU
1	X	38	ASP
1	X	44	ARG
1	X	45	LEU
1	X	60	GLU
1	X	63	GLN
1	X	71	SER
1	X	77	GLU
1	X	131	ARG
1	X	132	ARG
1	X	140	THR
1	X	153	ASP
1	X	185	CYS
1	X	204	LEU
1	X	213	HIS
1	X	223	LYS
1	X	227	ARG
1	X	257	GLU
1	X	258	ARG
1	X	262	LEU
1	X	263	LEU
1	X	277	THR
1	X	281	ARG

Some sidechains can be flipped to improve hydrogen bonding and reduce clashes. All (5) such sidechains are listed below:

Mol	Chain	Res	Type
1	X	42	GLN
1	X	210	HIS
1	X	221	HIS
1	X	232	ASN
1	X	274	ASN

### 5.3.3 RNA [i](#)

There are no RNA molecules in this entry.

## 5.4 Non-standard residues in protein, DNA, RNA chains [i](#)

There are no non-standard protein/DNA/RNA residues in this entry.

## 5.5 Carbohydrates [i](#)

There are no carbohydrates in this entry.

## 5.6 Ligand geometry [i](#)

1 ligand is modelled in this entry.

In the following table, the Counts columns list the number of bonds (or angles) for which Mogul statistics could be retrieved, the number of bonds (or angles) that are observed in the model and the number of bonds (or angles) that are defined in the Chemical Component Dictionary. The Link column lists molecule types, if any, to which the group is linked. The Z score for a bond length (or angle) is the number of standard deviations the observed value is removed from the expected value. A bond length (or angle) with  $|Z| > 2$  is considered an outlier worth inspection. RMSZ is the root-mean-square of all Z scores of the bond lengths (or angles).

Mol	Type	Chain	Res	Link	Bond lengths			Bond angles		
					Counts	RMSZ	# Z  > 2	Counts	RMSZ	# Z  > 2
2	B81	X	328	-	24,24,24	1.99	10 (41%)	39,39,39	1.96	10 (25%)

In the following table, the Chirals column lists the number of chiral outliers, the number of chiral centers analysed, the number of these observed in the model and the number defined in the Chemical Component Dictionary. Similar counts are reported in the Torsion and Rings columns. '-' means no outliers of that kind were identified.

Mol	Type	Chain	Res	Link	Chirals	Torsions	Rings
2	B81	X	328	-	-	-	0/4/4/4

All (10) bond length outliers are listed below:

Mol	Chain	Res	Type	Atoms	Z	Observed(Å)	Ideal(Å)
2	X	328	B81	C7-C6	-4.36	1.40	1.50
2	X	328	B81	C6-C5	3.06	1.39	1.33
2	X	328	B81	C8-C9	3.02	1.59	1.53
2	X	328	B81	C8-C14	2.74	1.58	1.53

*Continued on next page...*

*Continued from previous page...*

Mol	Chain	Res	Type	Atoms	Z	Observed(Å)	Ideal(Å)
2	X	328	B81	C10-C9	2.47	1.60	1.56
2	X	328	B81	C10-C5	2.28	1.57	1.52
2	X	328	B81	C13-C17	2.23	1.57	1.54
2	X	328	B81	C16-C17	2.23	1.58	1.53
2	X	328	B81	C15-C14	2.19	1.58	1.54
2	X	328	B81	C2-C3	2.07	1.56	1.51

All (10) bond angle outliers are listed below:

Mol	Chain	Res	Type	Atoms	Z	Observed(°)	Ideal(°)
2	X	328	B81	C1-C2-C3	5.06	116.96	110.47
2	X	328	B81	C16-C17-C13	4.64	108.22	104.53
2	X	328	B81	C2-C3-C4	4.21	116.07	110.31
2	X	328	B81	C18-C13-C14	3.14	117.57	111.71
2	X	328	B81	C4-C5-C10	2.91	120.29	116.42
2	X	328	B81	C14-C8-C9	2.74	112.76	109.09
2	X	328	B81	C1-C10-C5	-2.52	104.15	108.75
2	X	328	B81	C14-C13-C17	-2.50	96.63	99.27
2	X	328	B81	C19-C10-C9	2.48	114.64	111.68
2	X	328	B81	C11-C9-C10	2.12	115.87	113.08

There are no chirality outliers.

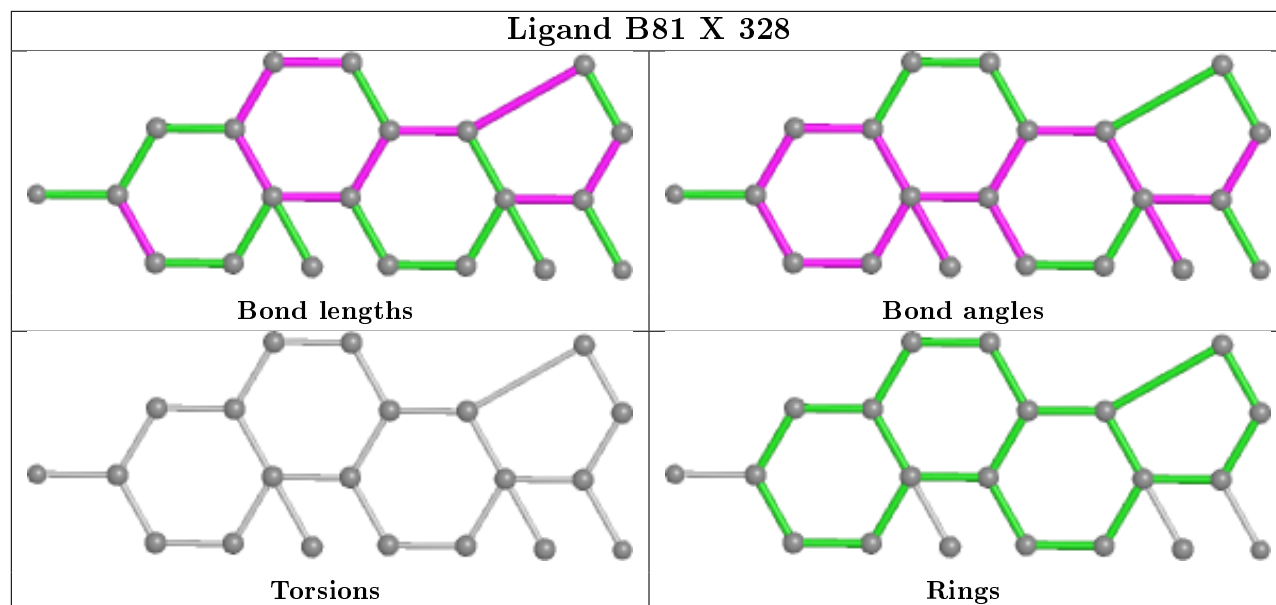
There are no torsion outliers.

There are no ring outliers.

1 monomer is involved in 4 short contacts:

Mol	Chain	Res	Type	Clashes	Symm-Clashes
2	X	328	B81	4	0

The following is a two-dimensional graphical depiction of Mogul quality analysis of bond lengths, bond angles, torsion angles, and ring geometry for all instances of the Ligand of Interest. In addition, ligands with molecular weight > 250 and outliers as shown on the validation Tables will also be included. For torsion angles, if less than 5% of the Mogul distribution of torsion angles is within 10 degrees of the torsion angle in question, then that torsion angle is considered an outlier. Any bond that is central to one or more torsion angles identified as an outlier by Mogul will be highlighted in the graph. For rings, the root-mean-square deviation (RMSD) between the ring in question and similar rings identified by Mogul is calculated over all ring torsion angles. If the average RMSD is greater than 60 degrees and the minimal RMSD between the ring in question and any Mogul-identified rings is also greater than 60 degrees, then that ring is considered an outlier. The outliers are highlighted in purple. The color gray indicates Mogul did not find sufficient equivalents in the CSD to analyse the geometry.



## 5.7 Other polymers [i](#)

There are no such residues in this entry.

## 5.8 Polymer linkage issues [i](#)

There are no chain breaks in this entry.

## 6 Fit of model and data [i](#)

### 6.1 Protein, DNA and RNA chains [i](#)

In the following table, the column labelled ‘#RSRZ> 2’ contains the number (and percentage) of RSRZ outliers, followed by percent RSRZ outliers for the chain as percentile scores relative to all X-ray entries and entries of similar resolution. The OWAB column contains the minimum, median, 95<sup>th</sup> percentile and maximum values of the occupancy-weighted average B-factor per residue. The column labelled ‘Q< 0.9’ lists the number of (and percentage) of residues with an average occupancy less than 0.9.

Mol	Chain	Analysed	<RSRZ>	#RSRZ>2	OWAB(Å <sup>2</sup> )	Q<0.9
1	X	276/327 (84%)	-0.42	4 (1%) 75 77	14, 32, 53, 71	10 (3%)

All (4) RSRZ outliers are listed below:

Mol	Chain	Res	Type	RSRZ
1	X	285	GLY	4.5
1	X	1	ALA	4.1
1	X	247	PRO	3.3
1	X	281	ARG	2.3

### 6.2 Non-standard residues in protein, DNA, RNA chains [i](#)

There are no non-standard protein/DNA/RNA residues in this entry.

### 6.3 Carbohydrates [i](#)

There are no carbohydrates in this entry.

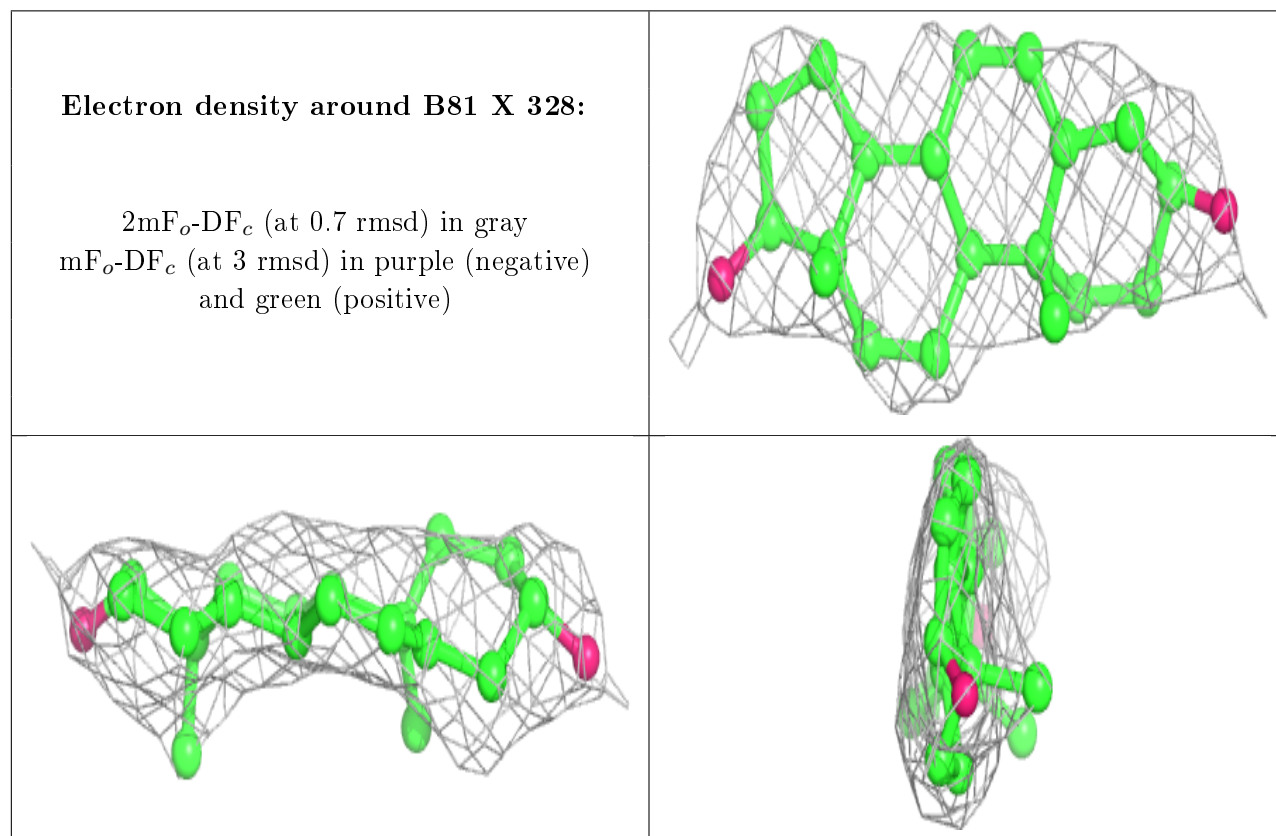
### 6.4 Ligands [i](#)

In the following table, the Atoms column lists the number of modelled atoms in the group and the number defined in the chemical component dictionary. The B-factors column lists the minimum, median, 95<sup>th</sup> percentile and maximum values of B factors of atoms in the group. The column labelled ‘Q< 0.9’ lists the number of atoms with occupancy less than 0.9.

Mol	Type	Chain	Res	Atoms	RSCC	RSR	B-factors(Å <sup>2</sup> )	Q<0.9
2	B81	X	328	21/21	0.88	0.19	56,60,62,63	0

The following is a graphical depiction of the model fit to experimental electron density of all instances of the Ligand of Interest. In addition, ligands with molecular weight > 250 and outliers

as shown on the geometry validation Tables will also be included. Each fit is shown from different orientation to approximate a three-dimensional view.



## 6.5 Other polymers [i](#)

There are no such residues in this entry.