



Full wwPDB X-ray Structure Validation Report ⓘ

May 16, 2020 – 04:54 am BST

PDB ID : 4K7J
Title : Peptidoglycan O-acetylerase in action, 5 min
Authors : Williams, A.H.; Gomperts Boneca, I.
Deposited on : 2013-04-17
Resolution : 1.97 Å(reported)

This is a Full wwPDB X-ray Structure Validation Report for a publicly released PDB entry.

We welcome your comments at validation@mail.wwpdb.org

A user guide is available at

<https://www.wwpdb.org/validation/2017/XrayValidationReportHelp>

with specific help available everywhere you see the ⓘ symbol.

The following versions of software and data (see [references ⓘ](#)) were used in the production of this report:

MolProbity : 4.02b-467
Mogul : 1.8.5 (274361), CSD as541be (2020)
Xtriage (Phenix) : 1.13
EDS : 2.11
Percentile statistics : 20191225.v01 (using entries in the PDB archive December 25th 2019)
Refmac : 5.8.0158
CCP4 : 7.0.044 (Gargrove)
Ideal geometry (proteins) : Engh & Huber (2001)
Ideal geometry (DNA, RNA) : Parkinson et al. (1996)
Validation Pipeline (wwPDB-VP) : 2.11

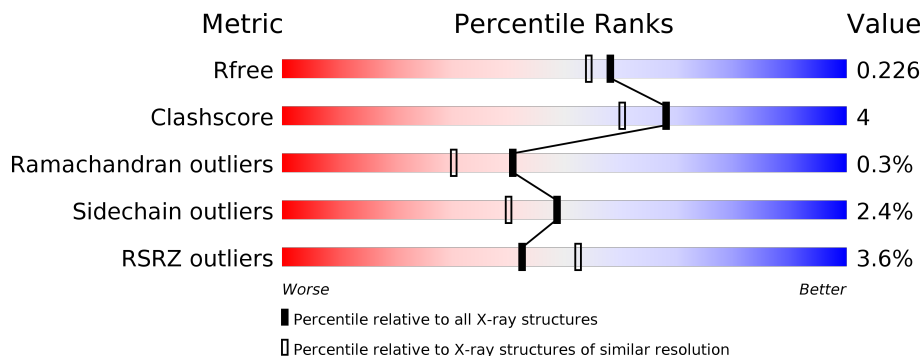
1 Overall quality at a glance

The following experimental techniques were used to determine the structure:

X-RAY DIFFRACTION

The reported resolution of this entry is 1.97 Å.

Percentile scores (ranging between 0-100) for global validation metrics of the entry are shown in the following graphic. The table shows the number of entries on which the scores are based.



Metric	Whole archive (#Entries)	Similar resolution (#Entries, resolution range(Å))
R_{free}	130704	2580 (1.96-1.96)
Clashscore	141614	2705 (1.96-1.96)
Ramachandran outliers	138981	2678 (1.96-1.96)
Sidechain outliers	138945	2678 (1.96-1.96)
RSRZ outliers	127900	2539 (1.96-1.96)

The table below summarises the geometric issues observed across the polymeric chains and their fit to the electron density. The red, orange, yellow and green segments on the lower bar indicate the fraction of residues that contain outliers for ≥ 3 , 2, 1 and 0 types of geometric quality criteria respectively. A grey segment represents the fraction of residues that are not modelled. The numeric value for each fraction is indicated below the corresponding segment, with a dot representing fractions $\leq 5\%$. The upper red bar (where present) indicates the fraction of residues that have poor fit to the electron density. The numeric value is given above the bar.

Mol	Chain	Length	Quality of chain
1	A	379	 3% 84% 8% 8%
1	B	379	 3% 82% 9% 8%

The following table lists non-polymeric compounds, carbohydrate monomers and non-standard residues in protein, DNA, RNA chains that are outliers for geometric or electron-density-fit criteria:

Mol	Type	Chain	Res	Chirality	Geometry	Clashes	Electron density
2	ACT	B	401	-	X	X	-

2 Entry composition [i](#)

There are 4 unique types of molecules in this entry. The entry contains 5889 atoms, of which 0 are hydrogens and 0 are deuteriums.

In the tables below, the ZeroOcc column contains the number of atoms modelled with zero occupancy, the AltConf column contains the number of residues with at least one atom in alternate conformation and the Trace column contains the number of residues modelled with at most 2 atoms.

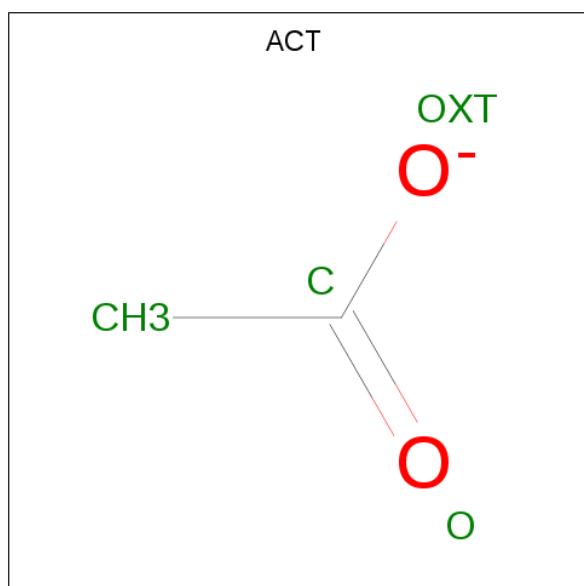
- Molecule 1 is a protein called GDSL-like Lipase/Acylhydrolase family protein.

Mol	Chain	Residues	Atoms					ZeroOcc	AltConf	Trace
			Total	C	N	O	S			
1	A	350	Total 2690	C 1676	N 492	O 509	S 13	0	5	0
1	B	350	Total 2672	C 1665	N 488	O 506	S 13	0	2	0

There are 4 discrepancies between the modelled and reference sequences:

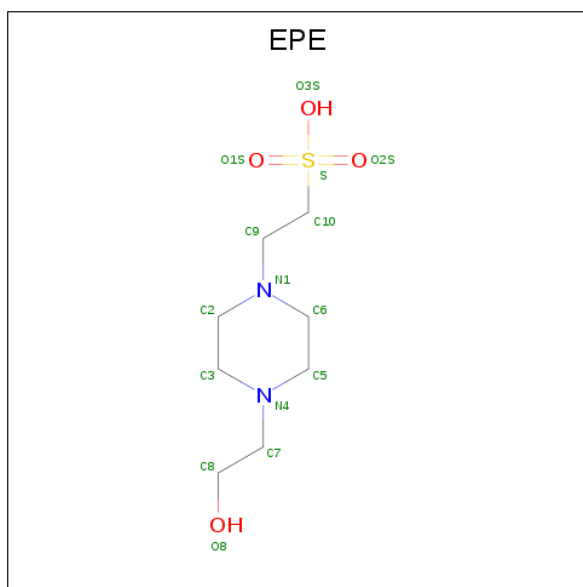
Chain	Residue	Modelled	Actual	Comment	Reference
A	19	GLY	-	EXPRESSION TAG	UNP L5SU74
A	20	SER	-	EXPRESSION TAG	UNP L5SU74
B	19	GLY	-	EXPRESSION TAG	UNP L5SU74
B	20	SER	-	EXPRESSION TAG	UNP L5SU74

- Molecule 2 is ACETATE ION (three-letter code: ACT) (formula: C₂H₃O₂).



Mol	Chain	Residues	Atoms	ZeroOcc	AltConf
2	A	1	Total C O 4 2 2	0	0
2	B	1	Total C O 3 2 1	0	0

- Molecule 3 is 4-(2-HYDROXYETHYL)-1-PIPERAZINE ETHANESULFONIC ACID (three-letter code: EPE) (formula: C₈H₁₈N₂O₄S).



Mol	Chain	Residues	Atoms	ZeroOcc	AltConf
3	A	1	Total C N O S 15 8 2 4 1	0	0
3	A	1	Total C N O S 15 8 2 4 1	0	0
3	B	1	Total C N O S 15 8 2 4 1	0	0
3	B	1	Total C N O S 15 8 2 4 1	0	0

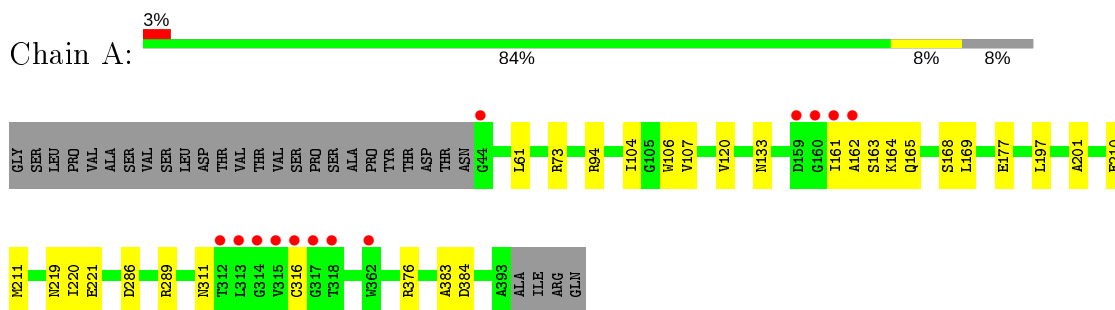
- Molecule 4 is water.

Mol	Chain	Residues	Atoms	ZeroOcc	AltConf
4	A	211	Total O 211 211	0	0
4	B	249	Total O 249 249	0	0

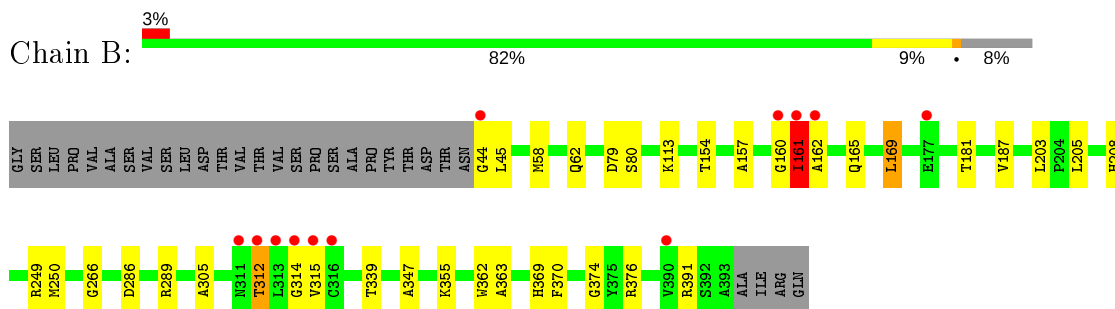
3 Residue-property plots [i](#)

These plots are drawn for all protein, RNA and DNA chains in the entry. The first graphic for a chain summarises the proportions of the various outlier classes displayed in the second graphic. The second graphic shows the sequence view annotated by issues in geometry and electron density. Residues are color-coded according to the number of geometric quality criteria for which they contain at least one outlier: green = 0, yellow = 1, orange = 2 and red = 3 or more. A red dot above a residue indicates a poor fit to the electron density ($RSRZ > 2$). Stretches of 2 or more consecutive residues without any outlier are shown as a green connector. Residues present in the sample, but not in the model, are shown in grey.

- Molecule 1: GDSL-like Lipase/Acylhydrolase family protein



- Molecule 1: GDSL-like Lipase/Acylhydrolase family protein



4 Data and refinement statistics

Property	Value	Source
Space group	P 21 21 21	Depositor
Cell constants a, b, c, α , β , γ	70.14Å 79.98Å 122.55Å 90.00° 90.00° 90.00°	Depositor
Resolution (Å)	48.64 – 1.97 48.64 – 1.97	Depositor EDS
% Data completeness (in resolution range)	99.3 (48.64-1.97) 99.3 (48.64-1.97)	Depositor EDS
R_{merge}	(Not available)	Depositor
R_{sym}	(Not available)	Depositor
$\langle I/\sigma(I) \rangle$ ¹	1.66 (at 1.97Å)	Xtrriage
Refinement program	PHENIX (phenix.refine: 1.8_1069)	Depositor
R, R_{free}	0.167 , 0.225 0.168 , 0.226	Depositor DCC
R_{free} test set	4959 reflections (10.07%)	wwPDB-VP
Wilson B-factor (Å ²)	27.8	Xtrriage
Anisotropy	0.041	Xtrriage
Bulk solvent k_{sol} (e/Å ³), B_{sol} (Å ²)	0.34 , 43.2	EDS
L-test for twinning ²	$\langle L \rangle = 0.48$, $\langle L^2 \rangle = 0.31$	Xtrriage
Estimated twinning fraction	No twinning to report.	Xtrriage
F_o, F_c correlation	0.96	EDS
Total number of atoms	5889	wwPDB-VP
Average B, all atoms (Å ²)	24.0	wwPDB-VP

Xtrriage's analysis on translational NCS is as follows: *The largest off-origin peak in the Patterson function is 6.10% of the height of the origin peak. No significant pseudotranslation is detected.*

¹ Intensities estimated from amplitudes.

² Theoretical values of $\langle |L| \rangle$, $\langle L^2 \rangle$ for acentric reflections are 0.5, 0.333 respectively for untwinned datasets, and 0.375, 0.2 for perfectly twinned datasets.

5 Model quality [i](#)

5.1 Standard geometry [i](#)

Bond lengths and bond angles in the following residue types are not validated in this section: EPE, ACT

The Z score for a bond length (or angle) is the number of standard deviations the observed value is removed from the expected value. A bond length (or angle) with $|Z| > 5$ is considered an outlier worth inspection. RMSZ is the root-mean-square of all Z scores of the bond lengths (or angles).

Mol	Chain	Bond lengths		Bond angles	
		RMSZ	# $ Z > 5$	RMSZ	# $ Z > 5$
1	A	0.36	0/2749	0.56	0/3725
1	B	0.37	0/2731	0.57	1/3702 (0.0%)
All	All	0.36	0/5480	0.56	1/7427 (0.0%)

There are no bond length outliers.

All (1) bond angle outliers are listed below:

Mol	Chain	Res	Type	Atoms	Z	Observed(°)	Ideal(°)
1	B	169	LEU	CA-CB-CG	5.43	127.79	115.30

There are no chirality outliers.

There are no planarity outliers.

5.2 Too-close contacts [i](#)

In the following table, the Non-H and H(model) columns list the number of non-hydrogen atoms and hydrogen atoms in the chain respectively. The H(added) column lists the number of hydrogen atoms added and optimized by MolProbity. The Clashes column lists the number of clashes within the asymmetric unit, whereas Symm-Clashes lists symmetry related clashes.

Mol	Chain	Non-H	H(model)	H(added)	Clashes	Symm-Clashes
1	A	2690	0	2644	19	0
1	B	2672	0	2625	22	0
2	A	4	0	3	0	0
2	B	3	0	3	3	0
3	A	30	0	34	0	0
3	B	30	0	34	1	0
4	A	211	0	0	5	0
4	B	249	0	0	1	0

Continued on next page...

Continued from previous page...

Mol	Chain	Non-H	H(model)	H(added)	Clashes	Symm-Clashes
All	All	5889	0	5343	41	0

The all-atom clashscore is defined as the number of clashes found per 1000 atoms (including hydrogen atoms). The all-atom clashscore for this structure is 4.

All (41) close contacts within the same asymmetric unit are listed below, sorted by their clash magnitude.

Atom-1	Atom-2	Interatomic distance (Å)	Clash overlap (Å)
1:A:94[A]:ARG:NH2	1:A:384:ASP:OD1	2.09	0.84
1:B:157:ALA:HB3	1:B:161:ILE:HG12	1.58	0.82
1:B:312:THR:O	1:B:355:LYS:NZ	2.23	0.69
1:A:104:ILE:HD11	1:A:220:ILE:HD12	1.75	0.68
1:B:161:ILE:HG21	1:B:203:LEU:HD13	1.79	0.65
1:B:161:ILE:HD13	1:B:203:LEU:HB3	1.80	0.64
1:A:164[A]:LYS:NZ	4:A:514:HOH:O	2.30	0.62
1:A:161:ILE:O	1:A:163:SER:N	2.32	0.62
1:B:286[B]:ASP:OD1	1:B:289:ARG:NH2	2.32	0.62
1:B:391[B]:ARG:NH2	4:B:701:HOH:O	2.32	0.60
1:A:286:ASP:OD1	1:A:289:ARG:NH2	2.37	0.56
1:B:369:HIS:NE2	2:B:401:ACT:H1	2.22	0.54
1:A:376:ARG:NH1	4:A:669:HOH:O	2.40	0.54
1:B:58:MET:O	1:B:62:GLN:HG2	2.09	0.53
1:A:106:TRP:CD2	1:A:219:ASN:HB2	2.46	0.51
1:A:165:GLN:N	1:A:201:ALA:O	2.42	0.50
1:A:104:ILE:HD12	1:A:107:VAL:HG11	1.94	0.50
1:A:289:ARG:NH1	4:A:710:HOH:O	2.44	0.49
1:A:210:GLU:OE2	4:A:662:HOH:O	2.20	0.49
1:B:362:TRP:O	1:B:374:GLY:HA3	2.12	0.48
1:A:106:TRP:CE3	1:A:219:ASN:HB2	2.47	0.48
1:A:73:ARG:NE	1:A:221:GLU:OE2	2.35	0.47
1:A:94[A]:ARG:HG2	1:A:383:ALA:HB1	1.96	0.47
1:B:44:GLY:HA2	1:B:347:ALA:HA	1.97	0.46
1:B:181:THR:OG1	1:B:208:HIS:HB2	2.16	0.46
1:B:266:GLY:HA3	1:B:305:ALA:HB2	1.98	0.46
1:B:249:ARG:HG3	1:B:250:MET:HE2	1.97	0.45
3:B:402:EPE:H51	3:B:402:EPE:H81	1.60	0.45
1:B:160:GLY:C	1:B:161:ILE:HG13	2.37	0.44
1:B:79:ASP:HB2	2:B:401:ACT:O	2.17	0.44
1:B:363:ALA:HA	1:B:370:PHE:HA	2.00	0.43
1:B:80:SER:H	2:B:401:ACT:C	2.32	0.42
1:B:161:ILE:HB	1:B:162:ALA:H	1.23	0.42

Continued on next page...

Continued from previous page...

Atom-1	Atom-2	Interatomic distance (Å)	Clash overlap (Å)
1:A:94[B]:ARG:HA	1:A:94[B]:ARG:HD3	1.94	0.42
1:B:154:THR:HA	1:B:205:LEU:O	2.21	0.41
1:A:94[A]:ARG:HG2	1:A:383:ALA:CB	2.51	0.41
1:A:133:ASN:O	1:B:187:VAL:HA	2.21	0.41
1:A:211:MET:HG3	4:A:702:HOH:O	2.20	0.41
1:B:314:GLY:O	1:B:315:VAL:HB	2.21	0.40
1:A:168:SER:HA	1:A:197:LEU:O	2.20	0.40
1:B:165:GLN:HG3	1:B:203:LEU:HD12	2.03	0.40

There are no symmetry-related clashes.

5.3 Torsion angles [i](#)

5.3.1 Protein backbone [i](#)

In the following table, the Percentiles column shows the percent Ramachandran outliers of the chain as a percentile score with respect to all X-ray entries followed by that with respect to entries of similar resolution.

The Analysed column shows the number of residues for which the backbone conformation was analysed, and the total number of residues.

Mol	Chain	Analysed	Favoured	Allowed	Outliers	Percentiles	
1	A	353/379 (93%)	343 (97%)	9 (2%)	1 (0%)	41	30
1	B	350/379 (92%)	342 (98%)	7 (2%)	1 (0%)	41	30
All	All	703/758 (93%)	685 (97%)	16 (2%)	2 (0%)	41	30

All (2) Ramachandran outliers are listed below:

Mol	Chain	Res	Type
1	A	162	ALA
1	B	161	ILE

5.3.2 Protein sidechains [i](#)

In the following table, the Percentiles column shows the percent sidechain outliers of the chain as a percentile score with respect to all X-ray entries followed by that with respect to entries of similar resolution.

The Analysed column shows the number of residues for which the sidechain conformation was

analysed, and the total number of residues.

Mol	Chain	Analysed	Rotameric	Outliers	Percentiles	
1	A	278/299 (93%)	272 (98%)	6 (2%)	52	44
1	B	276/299 (92%)	269 (98%)	7 (2%)	47	38
All	All	554/598 (93%)	541 (98%)	13 (2%)	49	42

All (13) residues with a non-rotameric sidechain are listed below:

Mol	Chain	Res	Type
1	A	61	LEU
1	A	120	VAL
1	A	169	LEU
1	A	177	GLU
1	A	311	ASN
1	A	316	CYS
1	B	45	LEU
1	B	113	LYS
1	B	161	ILE
1	B	169	LEU
1	B	312	THR
1	B	339	THR
1	B	376	ARG

Some sidechains can be flipped to improve hydrogen bonding and reduce clashes. There are no such sidechains identified.

5.3.3 RNA [i](#)

There are no RNA molecules in this entry.

5.4 Non-standard residues in protein, DNA, RNA chains [i](#)

There are no non-standard protein/DNA/RNA residues in this entry.

5.5 Carbohydrates [i](#)

There are no carbohydrates in this entry.

5.6 Ligand geometry

6 ligands are modelled in this entry.

In the following table, the Counts columns list the number of bonds (or angles) for which Mogul statistics could be retrieved, the number of bonds (or angles) that are observed in the model and the number of bonds (or angles) that are defined in the Chemical Component Dictionary. The Link column lists molecule types, if any, to which the group is linked. The Z score for a bond length (or angle) is the number of standard deviations the observed value is removed from the expected value. A bond length (or angle) with $|Z| > 2$ is considered an outlier worth inspection. RMSZ is the root-mean-square of all Z scores of the bond lengths (or angles).

Mol	Type	Chain	Res	Link	Bond lengths			Bond angles		
					Counts	RMSZ	# Z > 2	Counts	RMSZ	# Z > 2
3	EPE	A	403	-	15,15,15	0.84	1 (6%)	18,20,20	1.90	5 (27%)
2	ACT	B	401	1	1,2,3	3.46	1 (100%)	1,1,3	2.35	1 (100%)
3	EPE	B	402	-	15,15,15	0.81	1 (6%)	18,20,20	1.79	5 (27%)
3	EPE	B	403	-	15,15,15	0.79	1 (6%)	18,20,20	2.12	6 (33%)
2	ACT	A	401	-	1,3,3	1.10	0	0,3,3	0.00	-
3	EPE	A	402	-	15,15,15	0.81	1 (6%)	18,20,20	1.90	6 (33%)

In the following table, the Chirals column lists the number of chiral outliers, the number of chiral centers analysed, the number of these observed in the model and the number defined in the Chemical Component Dictionary. Similar counts are reported in the Torsion and Rings columns. '-' means no outliers of that kind were identified.

Mol	Type	Chain	Res	Link	Chirals	Torsions	Rings
3	EPE	B	402	-	-	7/9/19/19	0/1/1/1
3	EPE	B	403	-	-	4/9/19/19	0/1/1/1
3	EPE	A	403	-	-	4/9/19/19	0/1/1/1
3	EPE	A	402	-	-	3/9/19/19	0/1/1/1

All (5) bond length outliers are listed below:

Mol	Chain	Res	Type	Atoms	Z	Observed(Å)	Ideal(Å)
2	B	401	ACT	O-C	3.46	1.35	1.20
3	B	402	EPE	C10-S	2.76	1.81	1.77
3	A	403	EPE	C10-S	2.75	1.81	1.77
3	A	402	EPE	C10-S	2.68	1.81	1.77
3	B	403	EPE	C10-S	2.64	1.81	1.77

All (23) bond angle outliers are listed below:

Mol	Chain	Res	Type	Atoms	Z	Observed(°)	Ideal(°)
3	B	403	EPE	C5-N4-C3	5.48	121.17	108.83
3	B	402	EPE	C5-N4-C3	4.48	118.92	108.83
3	A	402	EPE	C5-N4-C3	4.32	118.56	108.83
3	A	403	EPE	C5-N4-C3	3.88	117.56	108.83
3	A	403	EPE	C7-N4-C5	3.45	120.06	111.23
3	A	403	EPE	O3S-S-C10	3.30	111.10	105.77
3	B	403	EPE	C7-N4-C3	3.27	119.61	111.23
3	A	402	EPE	C7-N4-C5	3.20	119.41	111.23
3	A	402	EPE	C7-N4-C3	3.10	119.16	111.23
3	B	403	EPE	C7-N4-C5	3.04	119.01	111.23
3	A	403	EPE	C7-N4-C3	2.99	118.89	111.23
3	A	402	EPE	O1S-S-C10	2.99	110.51	106.92
3	B	402	EPE	O3S-S-C10	2.99	110.60	105.77
3	B	403	EPE	O3S-S-C10	2.95	110.54	105.77
3	B	402	EPE	C7-N4-C5	2.87	118.56	111.23
3	B	403	EPE	C6-C5-N4	2.81	116.42	110.64
3	B	403	EPE	O2S-S-C10	2.78	110.26	106.92
3	B	402	EPE	C7-N4-C3	2.72	118.19	111.23
3	A	403	EPE	C6-N1-C2	2.56	114.58	108.83
3	B	402	EPE	O1S-S-C10	2.41	109.81	106.92
3	A	402	EPE	C6-N1-C2	2.39	114.20	108.83
2	B	401	ACT	O-C-CH3	-2.35	106.13	124.38
3	A	402	EPE	O3S-S-C10	2.02	109.04	105.77

There are no chirality outliers.

All (18) torsion outliers are listed below:

Mol	Chain	Res	Type	Atoms
3	A	403	EPE	C8-C7-N4-C5
3	A	403	EPE	C9-C10-S-O1S
3	B	402	EPE	C8-C7-N4-C5
3	B	402	EPE	N4-C7-C8-O8
3	B	402	EPE	C9-C10-S-O2S
3	B	402	EPE	C9-C10-S-O3S
3	B	403	EPE	C8-C7-N4-C3
3	B	403	EPE	C9-C10-S-O1S
3	B	403	EPE	C9-C10-S-O3S
3	A	402	EPE	N4-C7-C8-O8
3	A	403	EPE	C9-C10-S-O3S
3	B	402	EPE	C10-C9-N1-C2
3	B	402	EPE	C10-C9-N1-C6
3	A	402	EPE	C10-C9-N1-C2
3	A	402	EPE	C10-C9-N1-C6

Continued on next page...

Continued from previous page...

Mol	Chain	Res	Type	Atoms
3	A	403	EPE	C9-C10-S-O2S
3	B	402	EPE	C9-C10-S-O1S
3	B	403	EPE	C9-C10-S-O2S

There are no ring outliers.

2 monomers are involved in 4 short contacts:

Mol	Chain	Res	Type	Clashes	Symm-Clashes
2	B	401	ACT	3	0
3	B	402	EPE	1	0

5.7 Other polymers [i](#)

There are no such residues in this entry.

5.8 Polymer linkage issues [i](#)

There are no chain breaks in this entry.

6 Fit of model and data

6.1 Protein, DNA and RNA chains

In the following table, the column labelled ‘#RSRZ> 2’ contains the number (and percentage) of RSRZ outliers, followed by percent RSRZ outliers for the chain as percentile scores relative to all X-ray entries and entries of similar resolution. The OWAB column contains the minimum, median, 95th percentile and maximum values of the occupancy-weighted average B-factor per residue. The column labelled ‘Q< 0.9’ lists the number of (and percentage) of residues with an average occupancy less than 0.9.

Mol	Chain	Analysed	<RSRZ>	#RSRZ>2	OWAB(Å ²)	Q<0.9
1	A	350/379 (92%)	0.07	13 (3%) 41 51	12, 22, 41, 63	0
1	B	350/379 (92%)	0.07	12 (3%) 45 55	12, 22, 41, 68	0
All	All	700/758 (92%)	0.07	25 (3%) 42 52	12, 22, 41, 68	0

All (25) RSRZ outliers are listed below:

Mol	Chain	Res	Type	RSRZ
1	B	313	LEU	5.5
1	B	161	ILE	4.9
1	A	161	ILE	4.9
1	A	315	VAL	4.6
1	B	316	CYS	4.5
1	B	312	THR	4.3
1	B	44	GLY	4.0
1	A	317	GLY	3.9
1	A	316	CYS	3.7
1	B	315	VAL	3.4
1	A	159	ASP	3.3
1	B	177	GLU	2.8
1	B	160	GLY	2.7
1	A	312	THR	2.7
1	A	44	GLY	2.7
1	A	160	GLY	2.5
1	B	314	GLY	2.4
1	B	311	ASN	2.3
1	A	314	GLY	2.3
1	A	313	LEU	2.3
1	A	318	THR	2.2
1	A	162	ALA	2.2
1	B	162	ALA	2.1
1	B	390	VAL	2.0

Continued on next page...

Continued from previous page...

Mol	Chain	Res	Type	RSRZ
1	A	362	TRP	2.0

6.2 Non-standard residues in protein, DNA, RNA chains [i](#)

There are no non-standard protein/DNA/RNA residues in this entry.

6.3 Carbohydrates [i](#)

There are no carbohydrates in this entry.

6.4 Ligands [i](#)

In the following table, the Atoms column lists the number of modelled atoms in the group and the number defined in the chemical component dictionary. The B-factors column lists the minimum, median, 95th percentile and maximum values of B factors of atoms in the group. The column labelled 'Q<0.9' lists the number of atoms with occupancy less than 0.9.

Mol	Type	Chain	Res	Atoms	RSCC	RSR	B-factors(Å ²)	Q<0.9
2	ACT	B	401	3/4	0.74	0.22	22,22,29,33	0
3	EPE	A	402	15/15	0.85	0.25	34,41,56,62	15
2	ACT	A	401	4/4	0.92	0.16	19,21,25,28	0
3	EPE	B	403	15/15	0.93	0.18	24,34,41,42	0
3	EPE	B	402	15/15	0.94	0.17	38,57,60,61	0
3	EPE	A	403	15/15	0.95	0.16	23,28,36,41	0

6.5 Other polymers [i](#)

There are no such residues in this entry.