



wwPDB X-ray Structure Validation Summary Report ⓘ

Aug 6, 2023 – 01:32 PM EDT

PDB ID : 1K6L
Title : Photosynthetic Reaction Center from Rhodobacter sphaeroides
Authors : Pokkuluri, P.R.; Laible, P.D.; Deng, Y.-L.; Wong, T.N.; Hanson, D.K.; Schiffer, M.
Deposited on : 2001-10-16
Resolution : 3.10 Å(reported)

This is a wwPDB X-ray Structure Validation Summary Report for a publicly released PDB entry.

We welcome your comments at validation@mail.wwpdb.org

A user guide is available at

<https://www.wwpdb.org/validation/2017/XrayValidationReportHelp>

with specific help available everywhere you see the ⓘ symbol.

The types of validation reports are described at

<http://www.wwpdb.org/validation/2017/FAQs#types>.

The following versions of software and data (see [references ⓘ](#)) were used in the production of this report:

MolProbity : 4.02b-467
Mogul : 1.8.5 (274361), CSD as541be (2020)
Xtriage (Phenix) : 1.13
EDS : 2.35
buster-report : 1.1.7 (2018)
Percentile statistics : 20191225.v01 (using entries in the PDB archive December 25th 2019)
Refmac : 5.8.0158
CCP4 : 7.0.044 (Gargrove)
Ideal geometry (proteins) : Engh & Huber (2001)
Ideal geometry (DNA, RNA) : Parkinson et al. (1996)
Validation Pipeline (wwPDB-VP) : 2.35

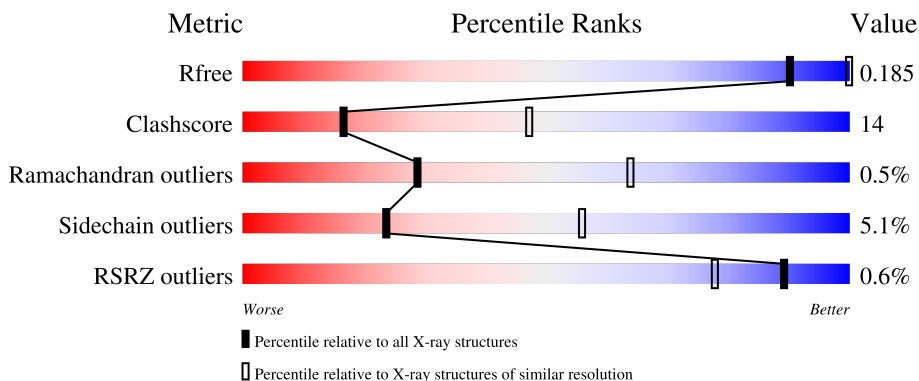
1 Overall quality at a glance

The following experimental techniques were used to determine the structure:

X-RAY DIFFRACTION

The reported resolution of this entry is 3.10 Å.

Percentile scores (ranging between 0-100) for global validation metrics of the entry are shown in the following graphic. The table shows the number of entries on which the scores are based.



Metric	Whole archive (#Entries)	Similar resolution (#Entries, resolution range(Å))
R_{free}	130704	1094 (3.10-3.10)
Clashscore	141614	1184 (3.10-3.10)
Ramachandran outliers	138981	1141 (3.10-3.10)
Sidechain outliers	138945	1141 (3.10-3.10)
RSRZ outliers	127900	1067 (3.10-3.10)

The table below summarises the geometric issues observed across the polymeric chains and their fit to the electron density. The red, orange, yellow and green segments of the lower bar indicate the fraction of residues that contain outliers for ≥ 3 , 2, 1 and 0 types of geometric quality criteria respectively. A grey segment represents the fraction of residues that are not modelled. The numeric value for each fraction is indicated below the corresponding segment, with a dot representing fractions $\leq 5\%$. The upper red bar (where present) indicates the fraction of residues that have poor fit to the electron density. The numeric value is given above the bar.

Mol	Chain	Length	Quality of chain
1	L	281	
2	M	314	
3	H	260	

The following table lists non-polymeric compounds, carbohydrate monomers and non-standard residues in protein, DNA, RNA chains that are outliers for geometric or electron-density-fit criteria:

Mol	Type	Chain	Res	Chirality	Geometry	Clashes	Electron density
10	CDL	M	800	-	-	-	X
4	BCL	L	304	X	-	-	-
4	BCL	M	501	X	-	-	-
5	BPH	M	401	X	-	-	-
6	U10	L	502	-	-	-	X
7	LDA	L	709	-	-	-	X

2 Entry composition

There are 11 unique types of molecules in this entry. The entry contains 7285 atoms, of which 0 are hydrogens and 0 are deuteriums.

In the tables below, the ZeroOcc column contains the number of atoms modelled with zero occupancy, the AltConf column contains the number of residues with at least one atom in alternate conformation and the Trace column contains the number of residues modelled with at most 2 atoms.

- Molecule 1 is a protein called PHOTOSYNTHETIC REACTION CENTER L SUBUNIT.

Mol	Chain	Residues	Atoms					ZeroOcc	AltConf	Trace
			Total	C	N	O	S			
1	L	281	2232	1507	355	362	8	0	0	0

- Molecule 2 is a protein called PHOTOSYNTHETIC REACTION CENTER M SUBUNIT.

Mol	Chain	Residues	Atoms					ZeroOcc	AltConf	Trace
			Total	C	N	O	S			
2	M	302	2408	1607	394	397	10	0	0	0

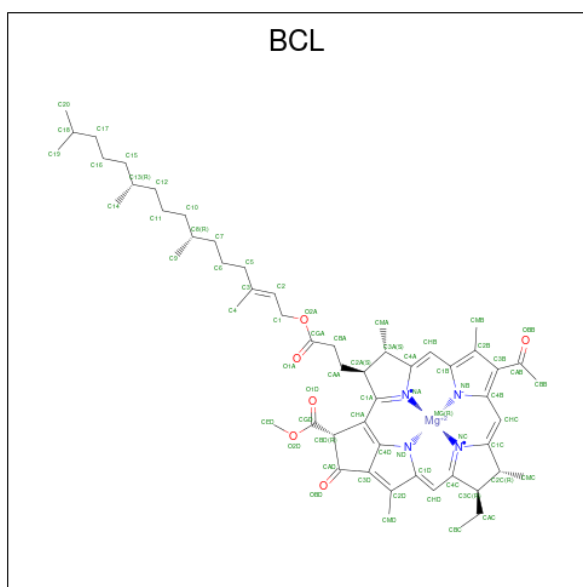
There are 7 discrepancies between the modelled and reference sequences:

Chain	Residue	Modelled	Actual	Comment	Reference
M	308	HIS	-	expression tag	UNP P02953
M	309	HIS	-	expression tag	UNP P02953
M	310	HIS	-	expression tag	UNP P02953
M	311	HIS	-	expression tag	UNP P02953
M	312	HIS	-	expression tag	UNP P02953
M	313	HIS	-	expression tag	UNP P02953
M	314	HIS	-	expression tag	UNP P02953

- Molecule 3 is a protein called PHOTOSYNTHETIC REACTION CENTER H SUBUNIT.

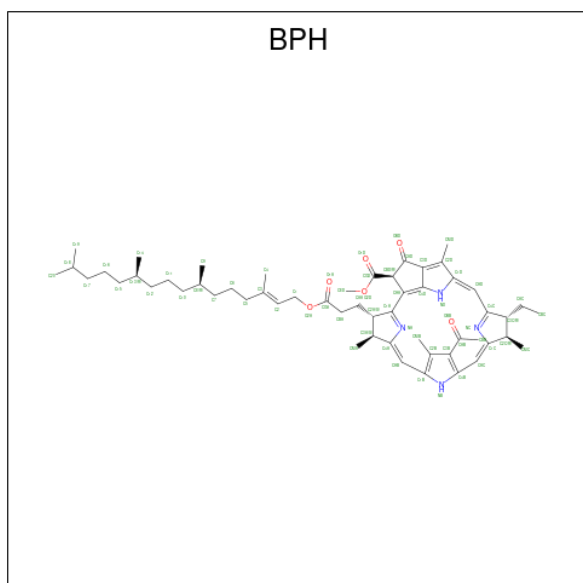
Mol	Chain	Residues	Atoms					ZeroOcc	AltConf	Trace
			Total	C	N	O	S			
3	H	240	1829	1169	314	337	9	0	0	0

- Molecule 4 is BACTERIOCHLOROPHYLL A (three-letter code: BCL) (formula: C₅₅H₇₄MgN₄O₆).



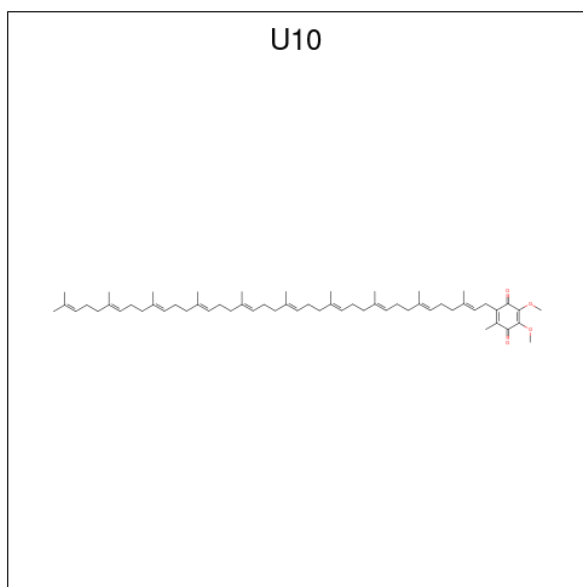
Mol	Chain	Residues	Atoms				ZeroOcc	AltConf	
			Total	C	Mg	N			O
4	L	1	Total	C	Mg	N	O	0	0
			66	55	1	4	6		
4	L	1	Total	C	Mg	N	O	0	0
			66	55	1	4	6		
4	M	1	Total	C	Mg	N	O	0	0
			66	55	1	4	6		
4	M	1	Total	C	Mg	N	O	0	0
			66	55	1	4	6		

- Molecule 5 is BACTERIOPHEOPHYTIN A (three-letter code: BPH) (formula: $C_{55}H_{76}N_4O_6$).



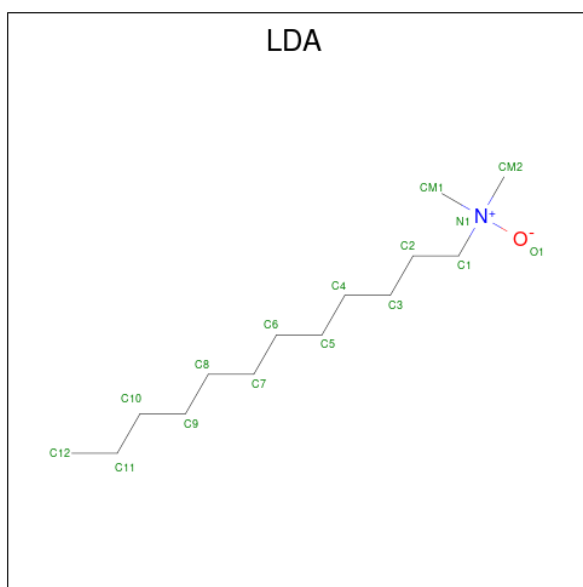
Mol	Chain	Residues	Atoms				ZeroOcc	AltConf
5	L	1	Total	C	N	O	0	0
			65	55	4	6		
5	M	1	Total	C	N	O	10	0
			65	55	4	6		

- Molecule 6 is UBIQUINONE-10 (three-letter code: U10) (formula: $C_{59}H_{90}O_4$).



Mol	Chain	Residues	Atoms			ZeroOcc	AltConf
6	L	1	Total	C	O	0	0
			48	44	4		
6	M	1	Total	C	O	0	0
			48	44	4		

- Molecule 7 is LAURYL DIMETHYLAMINE-N-OXIDE (three-letter code: LDA) (formula: $C_{14}H_{31}NO$).

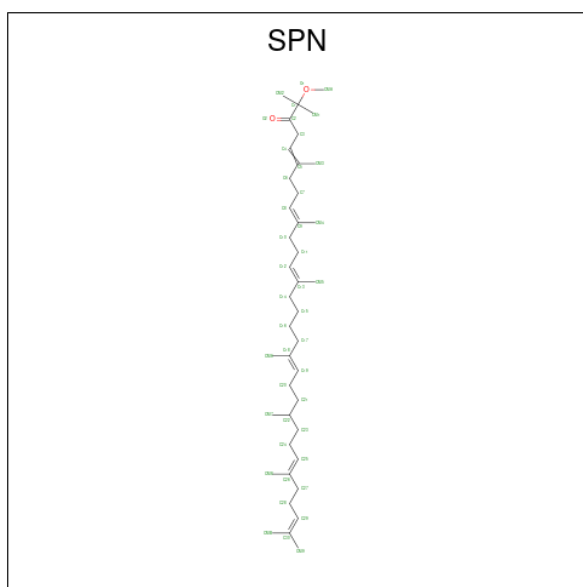


Mol	Chain	Residues	Atoms				ZeroOcc	AltConf
7	L	1	Total	C	N	O	0	0
			16	14	1	1		
7	M	1	Total	C	N	O	0	0
			16	14	1	1		
7	M	1	Total	C	N	O	0	0
			16	14	1	1		
7	H	1	Total	C	N	O	0	0
			16	14	1	1		

- Molecule 8 is FE (III) ION (three-letter code: FE) (formula: Fe).

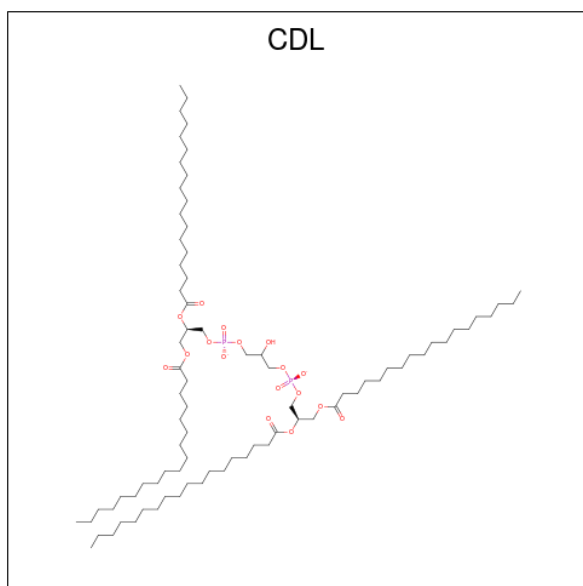
Mol	Chain	Residues	Atoms		ZeroOcc	AltConf
8	M	1	Total	Fe	0	0
			1	1		

- Molecule 9 is SPEROIDENONE (three-letter code: SPN) (formula: C₄₁H₇₀O₂).



Mol	Chain	Residues	Atoms			ZeroOcc	AltConf
			Total	C	O		
9	M	1	43	41	2	0	0

- Molecule 10 is CARDIOLIPIN (three-letter code: CDL) (formula: $C_{81}H_{156}O_{17}P_2$).



Mol	Chain	Residues	Atoms				ZeroOcc	AltConf
			Total	C	O	P		
10	M	1	81	62	17	2	0	0

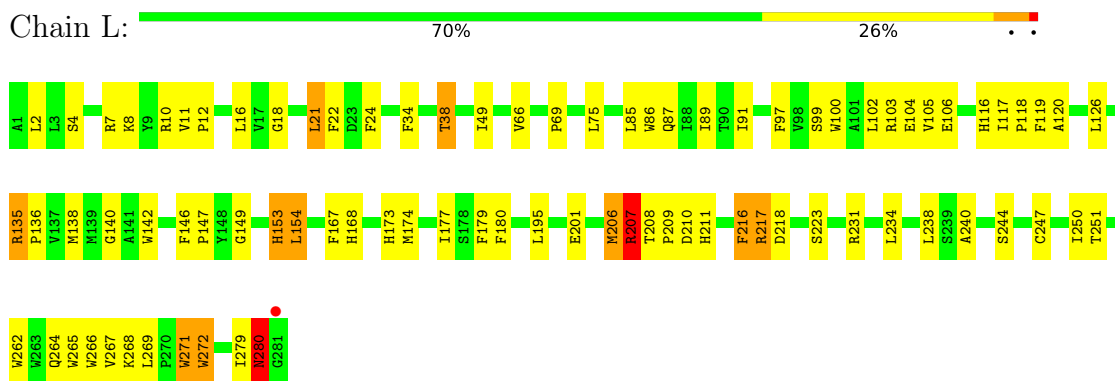
- Molecule 11 is water.

Mol	Chain	Residues	Atoms		ZeroOcc	AltConf
11	L	37	Total 37	O 37	0	0
11	M	40	Total 40	O 40	0	0
11	H	60	Total 60	O 60	0	0

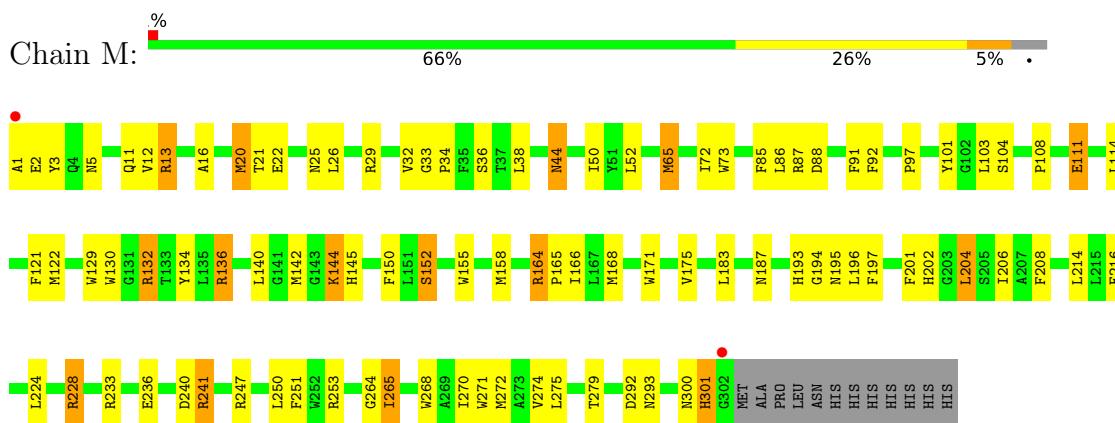
3 Residue-property plots [i](#)

These plots are drawn for all protein, RNA, DNA and oligosaccharide chains in the entry. The first graphic for a chain summarises the proportions of the various outlier classes displayed in the second graphic. The second graphic shows the sequence view annotated by issues in geometry and electron density. Residues are color-coded according to the number of geometric quality criteria for which they contain at least one outlier: green = 0, yellow = 1, orange = 2 and red = 3 or more. A red dot above a residue indicates a poor fit to the electron density ($RSRZ > 2$). Stretches of 2 or more consecutive residues without any outlier are shown as a green connector. Residues present in the sample, but not in the model, are shown in grey.

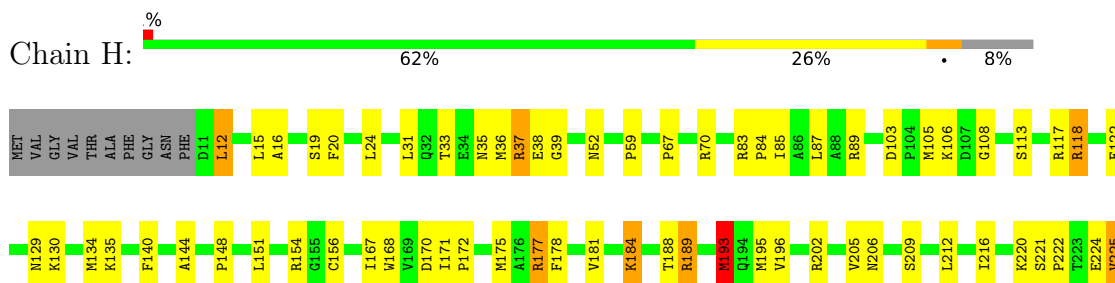
• Molecule 1: PHOTOSYNTHETIC REACTION CENTER L SUBUNIT



• Molecule 2: PHOTOSYNTHETIC REACTION CENTER M SUBUNIT



• Molecule 3: PHOTOSYNTHETIC REACTION CENTER H SUBUNIT



T226	
E229	
F230	
D231	
L241	
M242	
Y243	
A244	
A245	
P246	
K247	
R248	
K249	
S250	
VAL	
VAL	
ALA	
ALA	
ALA	
MET	
LEU	
ALA	
ALA	
GLU	
TYR	
ALA	

4 Data and refinement statistics

Property	Value	Source
Space group	P 31 2 1	Depositor
Cell constants a, b, c, α , β , γ	141.50Å 141.50Å 187.20Å 90.00° 90.00° 120.00°	Depositor
Resolution (Å)	10.00 – 3.10 19.95 – 3.10	Depositor EDS
% Data completeness (in resolution range)	81.4 (10.00-3.10) 92.2 (19.95-3.10)	Depositor EDS
R_{merge}	0.10	Depositor
R_{sym}	(Not available)	Depositor
$\langle I/\sigma(I) \rangle$ ¹	3.90 (at 3.09Å)	Xtrriage
Refinement program	CNS	Depositor
R, R_{free}	0.193 , 0.194 0.185 , 0.185	Depositor DCC
R_{free} test set	2565 reflections (7.00%)	wwPDB-VP
Wilson B-factor (Å ²)	58.6	Xtrriage
Anisotropy	0.128	Xtrriage
Bulk solvent k_{sol} (e/Å ³), B_{sol} (Å ²)	0.30 , 78.3	EDS
L-test for twinning ²	$\langle L \rangle = 0.49$, $\langle L^2 \rangle = 0.33$	Xtrriage
Estimated twinning fraction	0.020 for -h,-k,l	Xtrriage
F_o, F_c correlation	0.93	EDS
Total number of atoms	7285	wwPDB-VP
Average B, all atoms (Å ²)	34.0	wwPDB-VP

Xtrriage's analysis on translational NCS is as follows: *The largest off-origin peak in the Patterson function is 2.61% of the height of the origin peak. No significant pseudotranslation is detected.*

¹Intensities estimated from amplitudes.

²Theoretical values of $\langle |L| \rangle$, $\langle L^2 \rangle$ for acentric reflections are 0.5, 0.333 respectively for untwinned datasets, and 0.375, 0.2 for perfectly twinned datasets.

5 Model quality [i](#)

5.1 Standard geometry [i](#)

Bond lengths and bond angles in the following residue types are not validated in this section: U10, FE, BCL, LDA, SPN, CDL, BPH

The Z score for a bond length (or angle) is the number of standard deviations the observed value is removed from the expected value. A bond length (or angle) with $|Z| > 5$ is considered an outlier worth inspection. RMSZ is the root-mean-square of all Z scores of the bond lengths (or angles).

Mol	Chain	Bond lengths		Bond angles	
		RMSZ	# Z >5	RMSZ	# Z >5
1	L	0.95	0/2320	1.09	14/3175 (0.4%)
2	M	1.03	0/2500	1.10	16/3413 (0.5%)
3	H	0.92	1/1877 (0.1%)	1.20	19/2553 (0.7%)
All	All	0.97	1/6697 (0.0%)	1.13	49/9141 (0.5%)

Chiral center outliers are detected by calculating the chiral volume of a chiral center and verifying if the center is modelled as a planar moiety or with the opposite hand. A planarity outlier is detected by checking planarity of atoms in a peptide group, atoms in a mainchain group or atoms of a sidechain that are expected to be planar.

Mol	Chain	#Chirality outliers	#Planarity outliers
1	L	0	1

All (1) bond length outliers are listed below:

Mol	Chain	Res	Type	Atoms	Z	Observed(Å)	Ideal(Å)
3	H	250	SER	C-O	5.51	1.33	1.23

The worst 5 of 49 bond angle outliers are listed below:

Mol	Chain	Res	Type	Atoms	Z	Observed(°)	Ideal(°)
1	L	103	ARG	NE-CZ-NH1	11.03	125.82	120.30
1	L	217	ARG	NE-CZ-NH2	8.65	124.62	120.30
3	H	202	ARG	NE-CZ-NH2	7.42	124.01	120.30
3	H	154	ARG	NE-CZ-NH2	7.38	123.99	120.30
3	H	117	ARG	NE-CZ-NH2	7.33	123.96	120.30

There are no chirality outliers.

All (1) planarity outliers are listed below:

Mol	Chain	Res	Type	Group
1	L	280	ASN	Mainchain

5.2 Too-close contacts [i](#)

In the following table, the Non-H and H(model) columns list the number of non-hydrogen atoms and hydrogen atoms in the chain respectively. The H(added) column lists the number of hydrogen atoms added and optimized by MolProbity. The Clashes column lists the number of clashes within the asymmetric unit, whereas Symm-Clashes lists symmetry-related clashes.

Mol	Chain	Non-H	H(model)	H(added)	Clashes	Symm-Clashes
1	L	2232	0	2187	72	0
2	M	2408	0	2321	76	0
3	H	1829	0	1836	48	0
4	L	132	0	148	16	0
4	M	132	0	148	18	0
5	L	65	0	76	2	0
5	M	65	0	76	1	0
6	L	48	0	63	6	0
6	M	48	0	63	6	0
7	H	16	0	31	4	0
7	L	16	0	31	3	0
7	M	32	0	62	4	0
8	M	1	0	0	0	0
9	M	43	0	69	1	0
10	M	81	0	106	1	0
11	H	60	0	0	2	0
11	L	37	0	0	1	0
11	M	40	0	0	1	0
All	All	7285	0	7217	203	0

The all-atom clashscore is defined as the number of clashes found per 1000 atoms (including hydrogen atoms). The all-atom clashscore for this structure is 14.

The worst 5 of 203 close contacts within the same asymmetric unit are listed below, sorted by their clash magnitude.

Atom-1	Atom-2	Interatomic distance (Å)	Clash overlap (Å)
3:H:33:THR:O	3:H:59:PRO:HG3	1.69	0.91
1:L:34:PHE:O	1:L:38:THR:HG23	1.71	0.89
6:M:503:U10:H202	7:H:703:LDA:H112	1.54	0.88
2:M:204:LEU:HB3	2:M:279:THR:HG21	1.56	0.85
2:M:197:PHE:HZ	4:M:502:BCL:HBB2	1.47	0.80

There are no symmetry-related clashes.

5.3 Torsion angles [i](#)

5.3.1 Protein backbone [i](#)

In the following table, the Percentiles column shows the percent Ramachandran outliers of the chain as a percentile score with respect to all X-ray entries followed by that with respect to entries of similar resolution.

The Analysed column shows the number of residues for which the backbone conformation was analysed, and the total number of residues.

Mol	Chain	Analysed	Favoured	Allowed	Outliers	Percentiles	
1	L	279/281 (99%)	265 (95%)	14 (5%)	0	100	100
2	M	300/314 (96%)	285 (95%)	11 (4%)	4 (1%)	12	42
3	H	238/260 (92%)	229 (96%)	9 (4%)	0	100	100
All	All	817/855 (96%)	779 (95%)	34 (4%)	4 (0%)	29	64

All (4) Ramachandran outliers are listed below:

Mol	Chain	Res	Type
2	M	22	GLU
2	M	301	HIS
2	M	52	LEU
2	M	34	PRO

5.3.2 Protein sidechains [i](#)

In the following table, the Percentiles column shows the percent sidechain outliers of the chain as a percentile score with respect to all X-ray entries followed by that with respect to entries of similar resolution.

The Analysed column shows the number of residues for which the sidechain conformation was analysed, and the total number of residues.

Mol	Chain	Analysed	Rotameric	Outliers	Percentiles	
1	L	220/220 (100%)	208 (94%)	12 (6%)	21	53
2	M	236/247 (96%)	226 (96%)	10 (4%)	30	62
3	H	195/208 (94%)	184 (94%)	11 (6%)	21	52
All	All	651/675 (96%)	618 (95%)	33 (5%)	24	56

5 of 33 residues with a non-rotameric sidechain are listed below:

Mol	Chain	Res	Type
3	H	221	SER
3	H	222	PRO
3	H	249	LYS
2	M	44	ASN
1	L	272	TRP

Sometimes sidechains can be flipped to improve hydrogen bonding and reduce clashes. All (4) such sidechains are listed below:

Mol	Chain	Res	Type
1	L	280	ASN
2	M	4	GLN
2	M	188	ASN
3	H	206	ASN

5.3.3 RNA [i](#)

There are no RNA molecules in this entry.

5.4 Non-standard residues in protein, DNA, RNA chains [i](#)

There are no non-standard protein/DNA/RNA residues in this entry.

5.5 Carbohydrates [i](#)

There are no monosaccharides in this entry.

5.6 Ligand geometry [i](#)

Of 15 ligands modelled in this entry, 1 is monoatomic - leaving 14 for Mogul analysis.

In the following table, the Counts columns list the number of bonds (or angles) for which Mogul statistics could be retrieved, the number of bonds (or angles) that are observed in the model and the number of bonds (or angles) that are defined in the Chemical Component Dictionary. The Link column lists molecule types, if any, to which the group is linked. The Z score for a bond length (or angle) is the number of standard deviations the observed value is removed from the expected value. A bond length (or angle) with $|Z| > 2$ is considered an outlier worth inspection. RMSZ is the root-mean-square of all Z scores of the bond lengths (or angles).

Mol	Type	Chain	Res	Link	Bond lengths			Bond angles		
					Counts	RMSZ	# Z > 2	Counts	RMSZ	# Z > 2
9	SPN	M	600	-	40,42,42	3.76	17 (42%)	50,52,52	2.58	16 (32%)
4	BCL	M	502	2	58,74,74	1.31	8 (13%)	69,115,115	1.94	13 (18%)
5	BPH	L	402	-	51,70,70	1.75	11 (21%)	52,101,101	2.49	14 (26%)
7	LDA	L	709	-	12,15,15	2.42	1 (8%)	14,17,17	0.49	0
7	LDA	H	703	-	12,15,15	2.41	1 (8%)	14,17,17	0.65	0
7	LDA	M	704	-	12,15,15	2.06	1 (8%)	14,17,17	0.52	0
10	CDL	M	800	-	80,80,99	0.48	0	86,92,111	0.93	5 (5%)
4	BCL	M	501	2	58,74,74	1.57	10 (17%)	69,115,115	2.55	27 (39%)
5	BPH	M	401	-	51,70,70	1.77	9 (17%)	52,101,101	2.83	24 (46%)
6	U10	M	503	-	48,48,63	2.46	21 (43%)	58,61,79	1.30	7 (12%)
7	LDA	M	701	-	12,15,15	2.57	1 (8%)	14,17,17	0.40	0
4	BCL	L	304	1	58,74,74	1.39	8 (13%)	69,115,115	2.24	14 (20%)
4	BCL	L	302	1	58,74,74	1.61	10 (17%)	69,115,115	2.62	14 (20%)
6	U10	L	502	-	48,48,63	2.15	20 (41%)	58,61,79	1.01	3 (5%)

In the following table, the Chirals column lists the number of chiral outliers, the number of chiral centers analysed, the number of these observed in the model and the number defined in the Chemical Component Dictionary. Similar counts are reported in the Torsion and Rings columns. '2' means no outliers of that kind were identified.

Mol	Type	Chain	Res	Link	Chirals	Torsions	Rings
9	SPN	M	600	-	-	19/50/51/51	-
4	BCL	M	502	2	-	8/37/137/137	-
5	BPH	L	402	-	-	5/37/105/105	0/5/6/6
7	LDA	L	709	-	-	4/13/13/13	-
7	LDA	H	703	-	-	5/13/13/13	-
7	LDA	M	704	-	-	2/13/13/13	-
10	CDL	M	800	-	-	30/91/91/110	-
4	BCL	M	501	2	2/2/21/25	15/37/137/137	-
5	BPH	M	401	-	1/1/18/22	12/37/105/105	0/5/6/6
6	U10	M	503	-	-	10/45/69/87	0/1/1/1
7	LDA	M	701	-	-	8/13/13/13	-
4	BCL	L	304	1	1/1/21/25	10/37/137/137	-
4	BCL	L	302	1	-	6/37/137/137	-
6	U10	L	502	-	-	9/45/69/87	0/1/1/1

The worst 5 of 118 bond length outliers are listed below:

Mol	Chain	Res	Type	Atoms	Z	Observed(Å)	Ideal(Å)
9	M	600	SPN	C4-C5	8.91	1.54	1.33
9	M	600	SPN	C19-C18	8.79	1.54	1.33
7	M	701	LDA	O1-N1	-8.77	1.21	1.42
9	M	600	SPN	C8-C9	8.44	1.53	1.33
7	H	703	LDA	O1-N1	-8.34	1.22	1.42

The worst 5 of 137 bond angle outliers are listed below:

Mol	Chain	Res	Type	Atoms	Z	Observed(°)	Ideal(°)
5	M	401	BPH	O2D-CGD-CBD	11.89	126.06	111.00
5	L	402	BPH	O2D-CGD-CBD	11.28	125.29	111.00
4	L	302	BCL	C4B-C3B-CAB	-11.07	105.76	127.13
4	L	302	BCL	OBB-CAB-C3B	9.32	136.53	119.99
4	L	304	BCL	C4A-NA-C1A	8.45	110.50	106.71

All (4) chirality outliers are listed below:

Mol	Chain	Res	Type	Atom
4	L	304	BCL	C13
4	M	501	BCL	C8
4	M	501	BCL	C13
5	M	401	BPH	C8

5 of 143 torsion outliers are listed below:

Mol	Chain	Res	Type	Atoms
4	L	304	BCL	C2C-C3C-CAC-CBC
4	L	304	BCL	C4C-C3C-CAC-CBC
4	M	501	BCL	C1-C2-C3-C4
5	M	401	BPH	O2A-C1-C2-C3
5	M	401	BPH	C1-C2-C3-C4

There are no ring outliers.

13 monomers are involved in 56 short contacts:

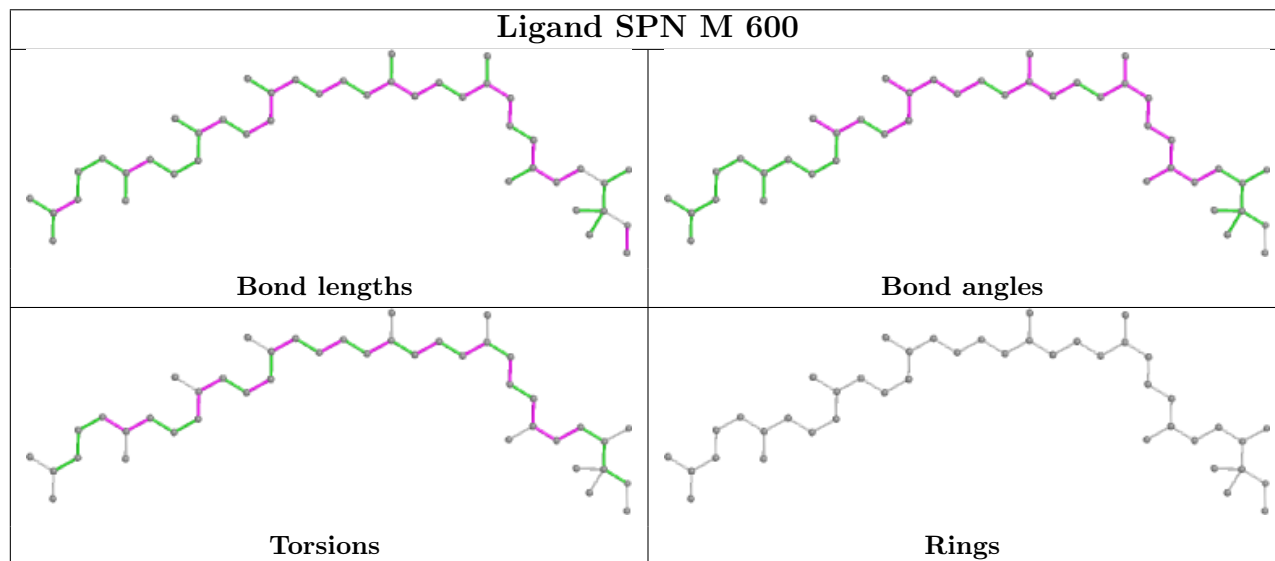
Mol	Chain	Res	Type	Clashes	Symm-Clashes
9	M	600	SPN	1	0
4	M	502	BCL	12	0
5	L	402	BPH	2	0
7	L	709	LDA	3	0
7	H	703	LDA	4	0

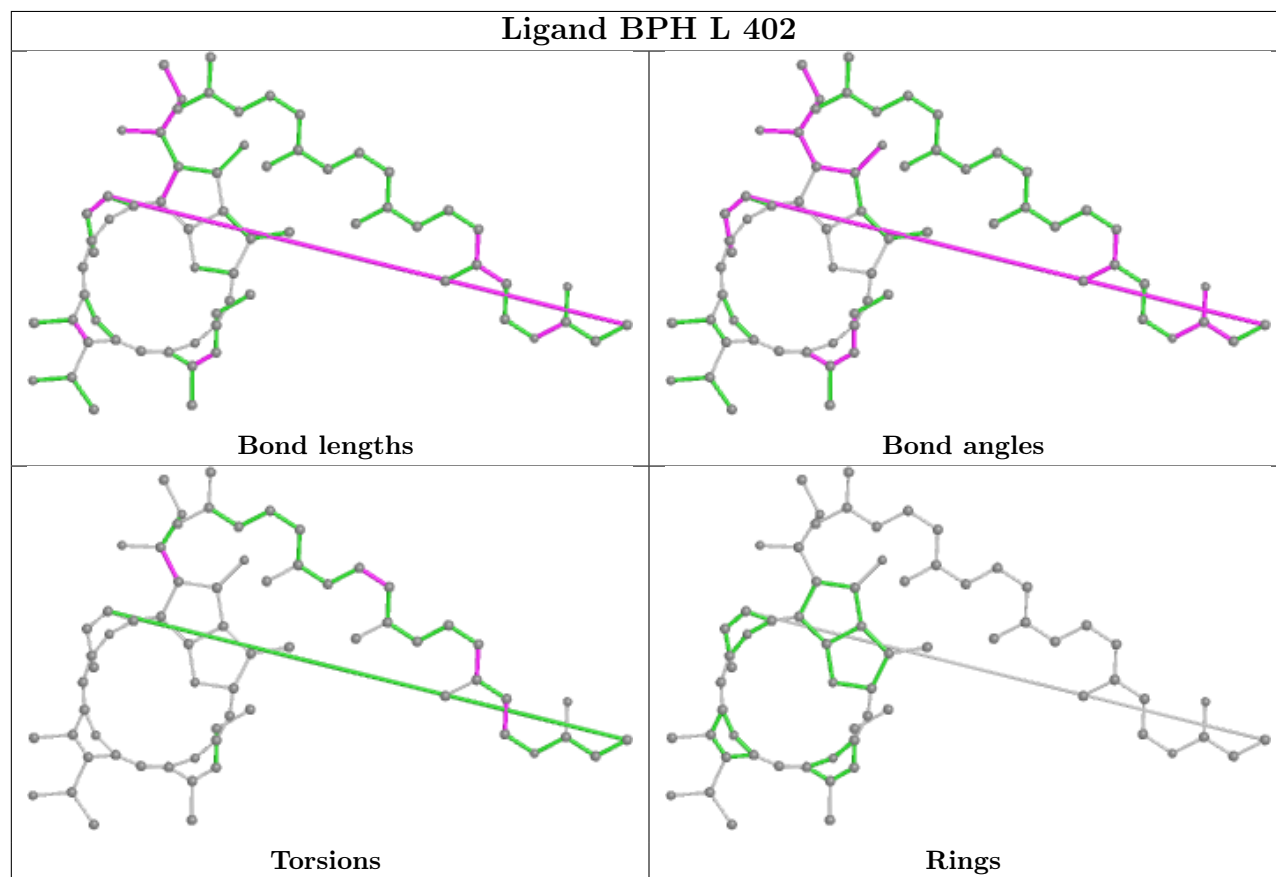
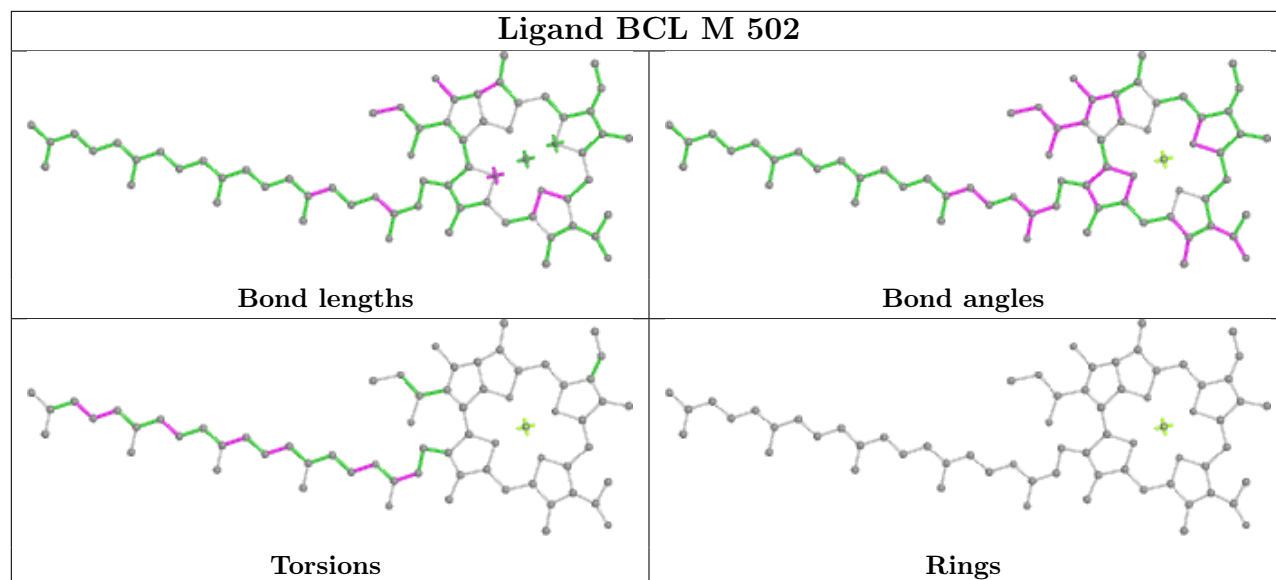
Continued on next page...

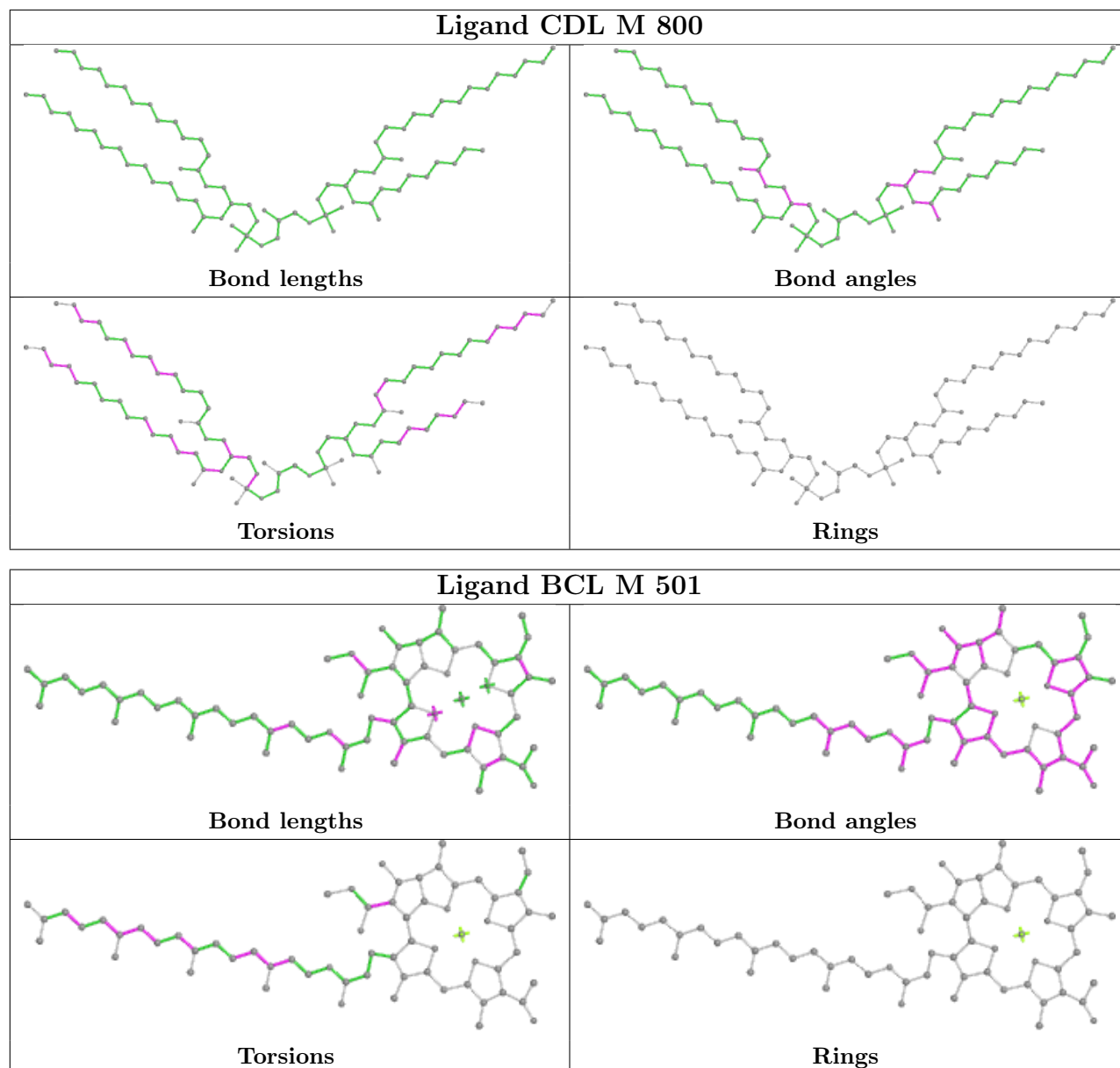
Continued from previous page...

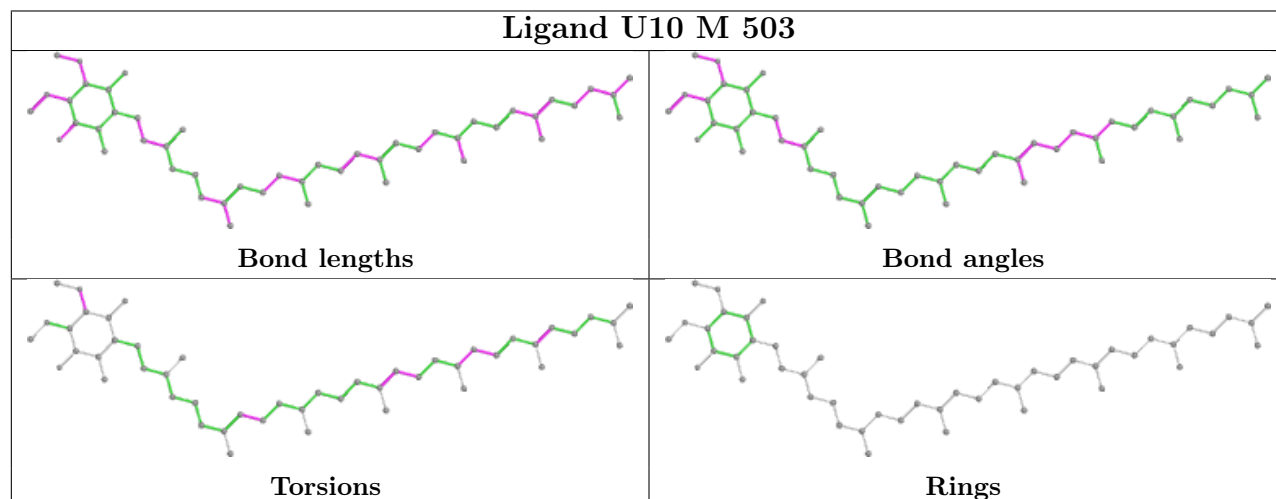
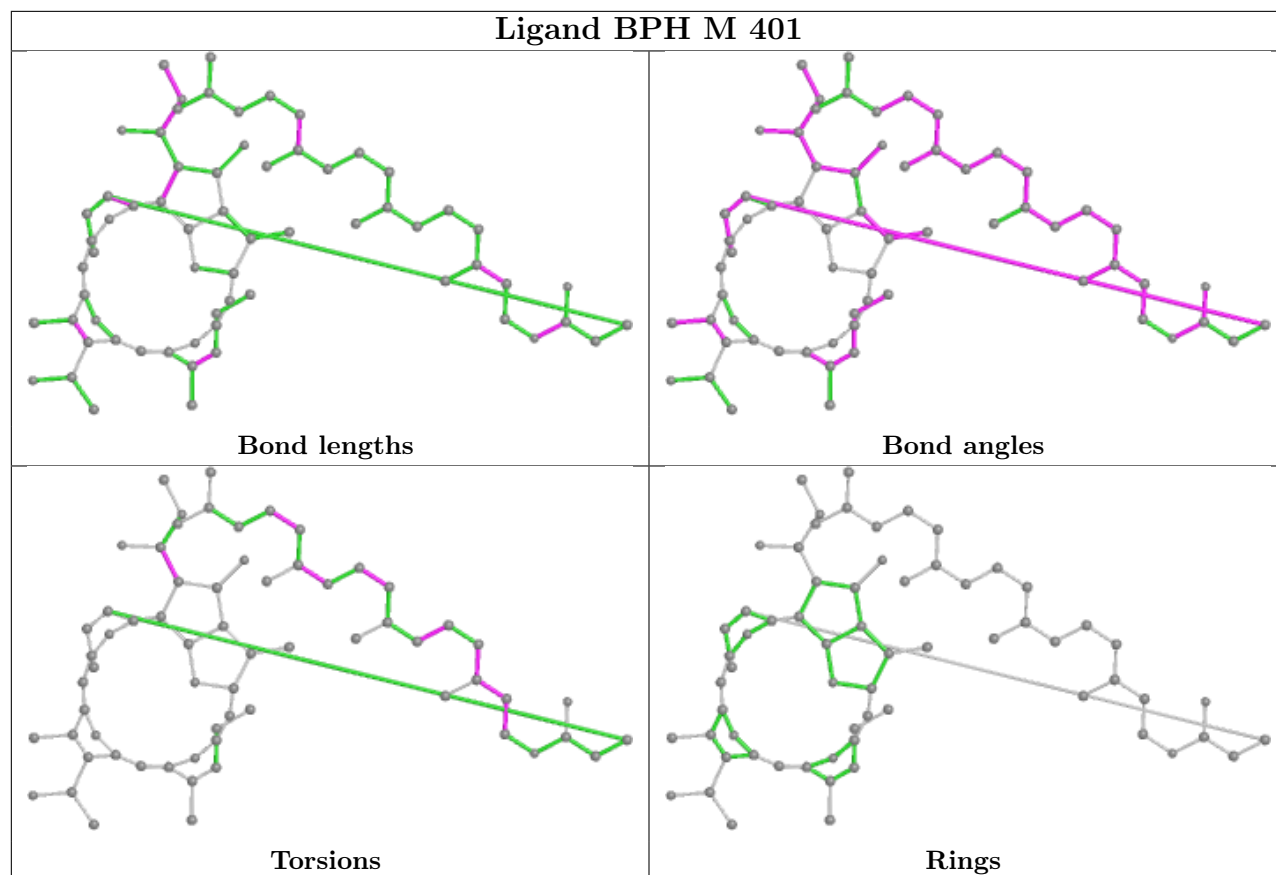
Mol	Chain	Res	Type	Clashes	Symm-Clashes
10	M	800	CDL	1	0
4	M	501	BCL	8	0
5	M	401	BPH	1	0
6	M	503	U10	6	0
7	M	701	LDA	4	0
4	L	304	BCL	7	0
4	L	302	BCL	11	0
6	L	502	U10	6	0

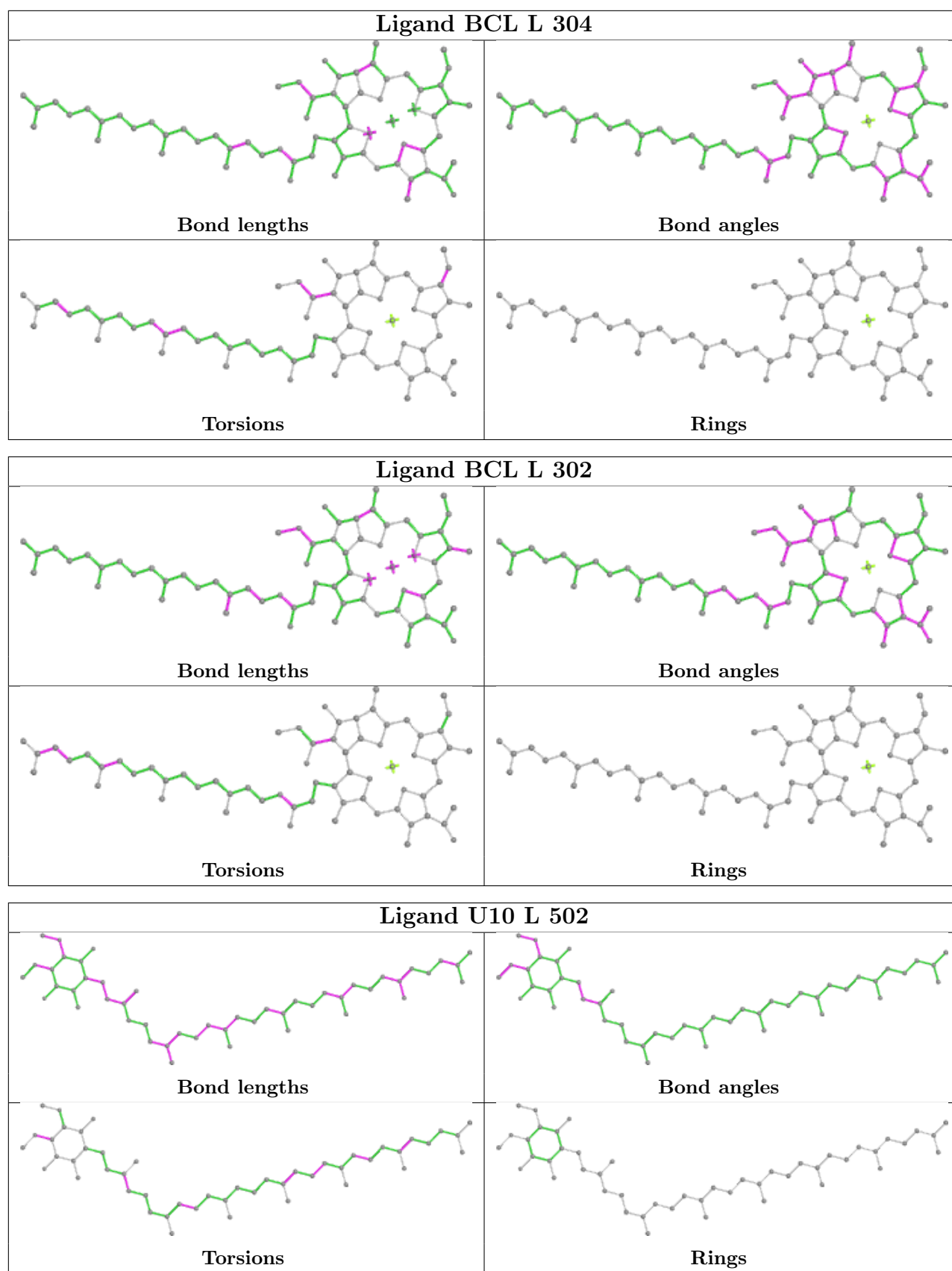
The following is a two-dimensional graphical depiction of Mogul quality analysis of bond lengths, bond angles, torsion angles, and ring geometry for all instances of the Ligand of Interest. In addition, ligands with molecular weight > 250 and outliers as shown on the validation Tables will also be included. For torsion angles, if less than 5% of the Mogul distribution of torsion angles is within 10 degrees of the torsion angle in question, then that torsion angle is considered an outlier. Any bond that is central to one or more torsion angles identified as an outlier by Mogul will be highlighted in the graph. For rings, the root-mean-square deviation (RMSD) between the ring in question and similar rings identified by Mogul is calculated over all ring torsion angles. If the average RMSD is greater than 60 degrees and the minimal RMSD between the ring in question and any Mogul-identified rings is also greater than 60 degrees, then that ring is considered an outlier. The outliers are highlighted in purple. The color gray indicates Mogul did not find sufficient equivalents in the CSD to analyse the geometry.











5.7 Other polymers [i](#)

There are no such residues in this entry.

5.8 Polymer linkage issues [i](#)

There are no chain breaks in this entry.

6 Fit of model and data [i](#)

6.1 Protein, DNA and RNA chains [i](#)

In the following table, the column labelled '#RSRZ > 2' contains the number (and percentage) of RSRZ outliers, followed by percent RSRZ outliers for the chain as percentile scores relative to all X-ray entries and entries of similar resolution. The OWAB column contains the minimum, median, 95th percentile and maximum values of the occupancy-weighted average B-factor per residue. The column labelled 'Q < 0.9' lists the number of (and percentage) of residues with an average occupancy less than 0.9.

Mol	Chain	Analysed	<RSRZ>	#RSRZ>2	OWAB(Å ²)	Q<0.9
1	L	281/281 (100%)	-0.82	1 (0%) 92 84	10, 26, 66, 94	0
2	M	302/314 (96%)	-0.83	2 (0%) 87 75	11, 32, 68, 97	0
3	H	240/260 (92%)	-0.69	2 (0%) 86 72	13, 29, 58, 95	0
All	All	823/855 (96%)	-0.79	5 (0%) 89 78	10, 29, 66, 97	0

All (5) RSRZ outliers are listed below:

Mol	Chain	Res	Type	RSRZ
3	H	250	SER	4.6
3	H	249	LYS	3.4
2	M	1	ALA	3.0
2	M	302	GLY	2.8
1	L	281	GLY	2.0

6.2 Non-standard residues in protein, DNA, RNA chains [i](#)

There are no non-standard protein/DNA/RNA residues in this entry.

6.3 Carbohydrates [i](#)

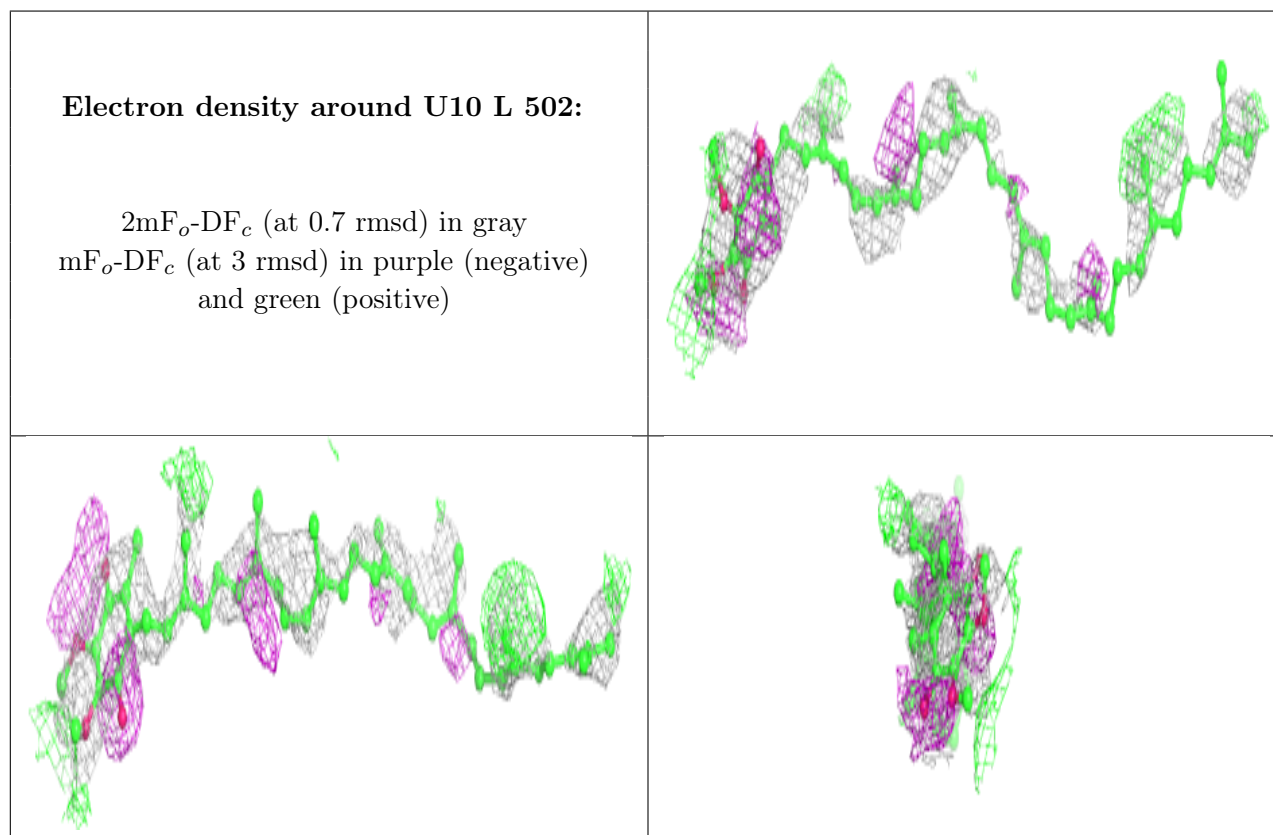
There are no monosaccharides in this entry.

6.4 Ligands [i](#)

In the following table, the Atoms column lists the number of modelled atoms in the group and the number defined in the chemical component dictionary. The B-factors column lists the minimum, median, 95th percentile and maximum values of B factors of atoms in the group. The column labelled 'Q < 0.9' lists the number of atoms with occupancy less than 0.9.

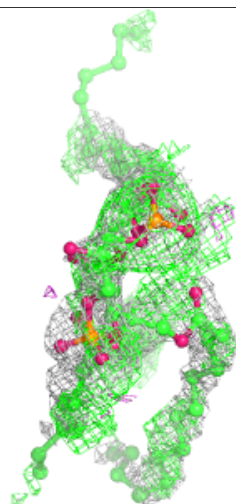
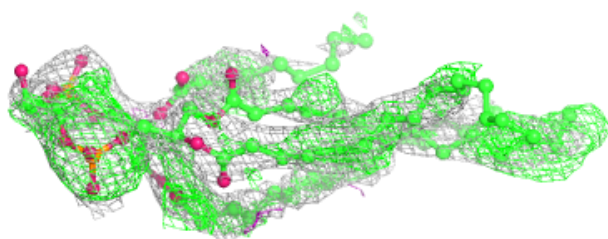
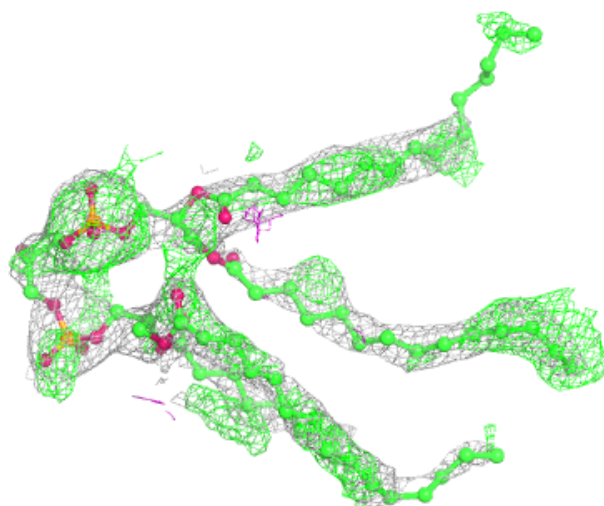
Mol	Type	Chain	Res	Atoms	RSCC	RSR	B-factors(\AA^2)	Q<0.9
7	LDA	L	709	16/16	0.74	0.43	67,85,95,97	0
6	U10	L	502	48/63	0.75	0.56	61,76,89,90	0
7	LDA	M	704	16/16	0.75	0.36	48,75,109,109	0
10	CDL	M	800	81/100	0.77	0.41	41,62,76,77	81
9	SPN	M	600	43/43	0.84	0.30	36,47,64,67	0
7	LDA	H	703	16/16	0.86	0.31	34,50,64,67	0
7	LDA	M	701	16/16	0.92	0.21	29,44,52,58	0
4	BCL	M	501	66/66	0.93	0.20	27,32,92,94	0
6	U10	M	503	48/63	0.93	0.18	15,29,60,62	0
5	BPH	L	402	65/65	0.96	0.16	23,27,38,40	0
5	BPH	M	401	65/65	0.97	0.14	29,33,63,67	10
4	BCL	M	502	66/66	0.97	0.14	10,19,52,68	0
4	BCL	L	304	66/66	0.97	0.11	2,14,40,49	0
4	BCL	L	302	66/66	0.98	0.13	5,17,40,54	0
8	FE	M	500	1/1	0.99	0.02	18,18,18,18	0

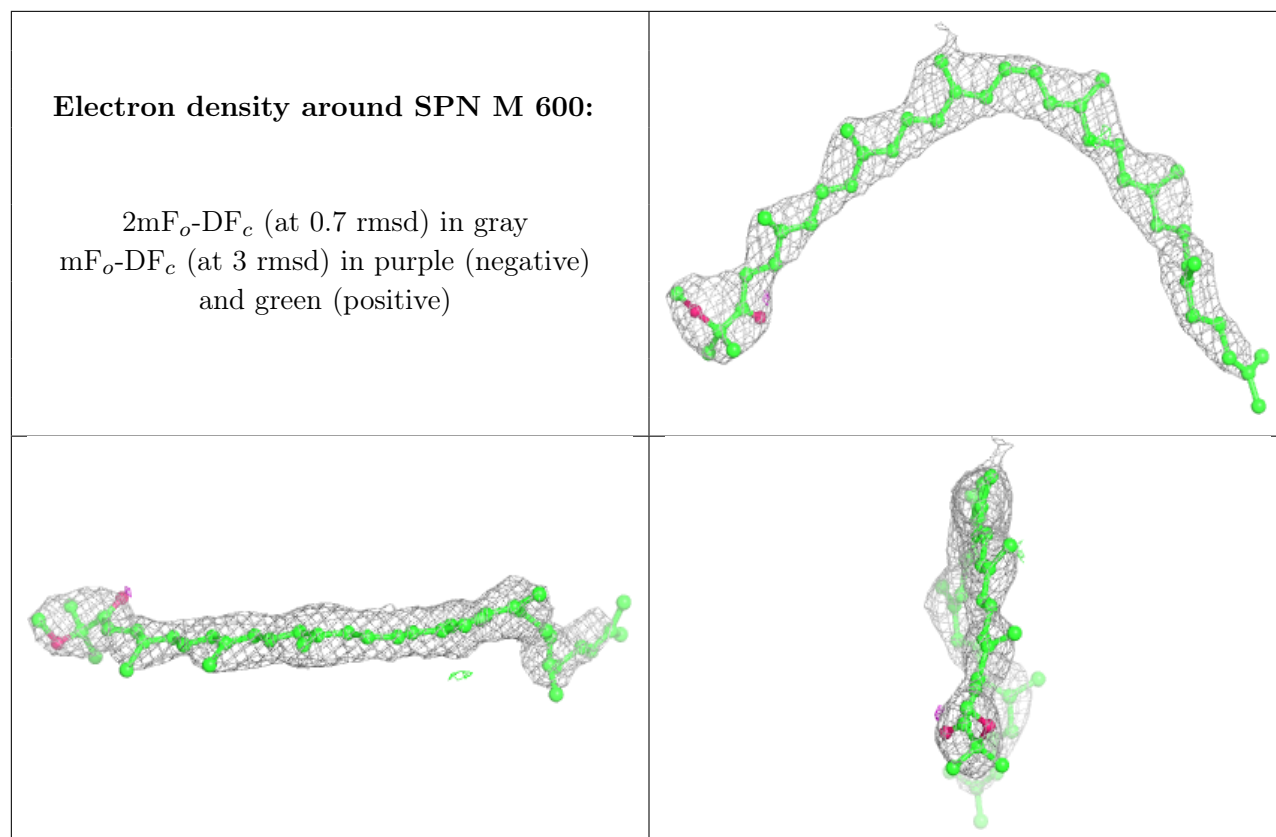
The following is a graphical depiction of the model fit to experimental electron density of all instances of the Ligand of Interest. In addition, ligands with molecular weight > 250 and outliers as shown on the geometry validation Tables will also be included. Each fit is shown from different orientation to approximate a three-dimensional view.



Electron density around CDL M 800:

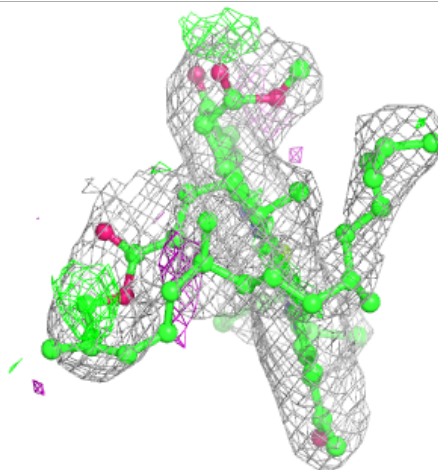
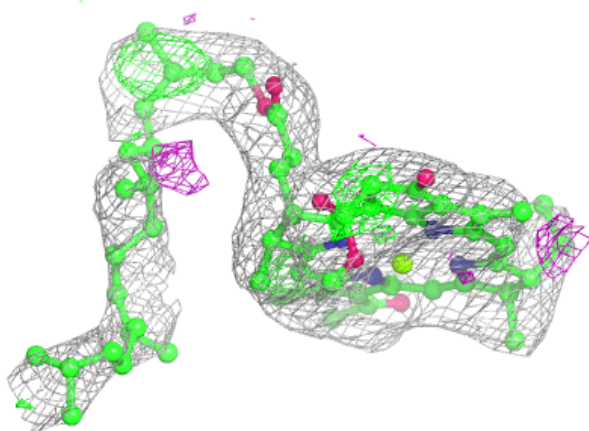
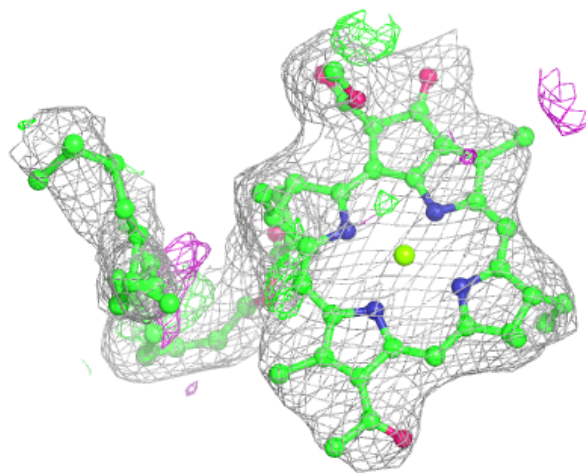
$2mF_o-DF_c$ (at 0.7 rmsd) in gray
 mF_o-DF_c (at 3 rmsd) in purple (negative)
and green (positive)





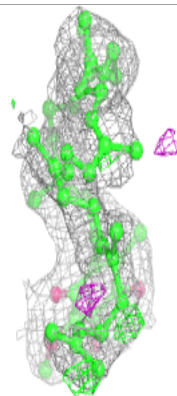
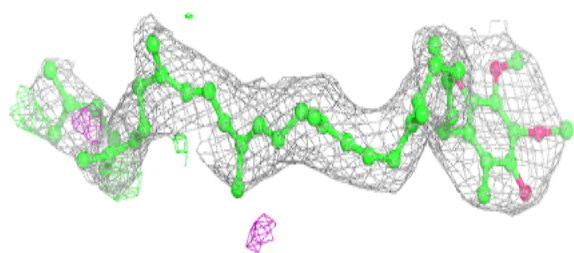
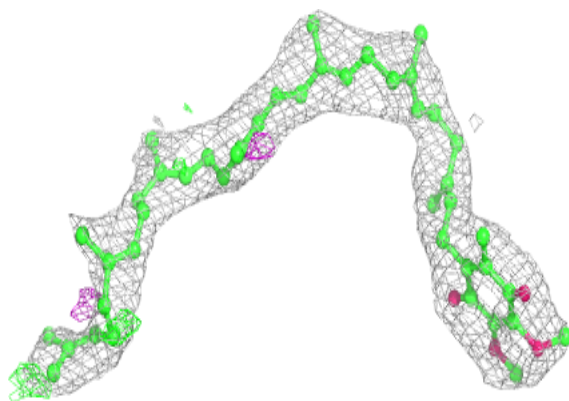
Electron density around BCL M 501:

$2mF_o-DF_c$ (at 0.7 rmsd) in gray
 mF_o-DF_c (at 3 rmsd) in purple (negative)
and green (positive)

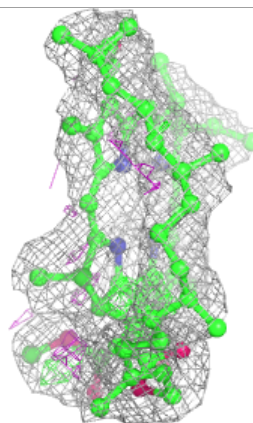
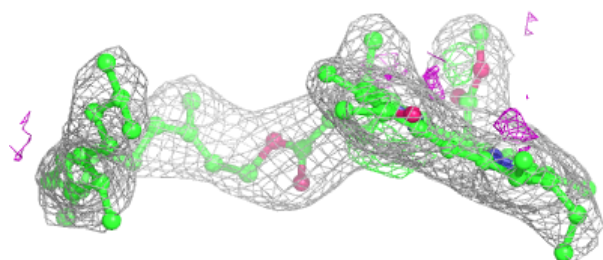
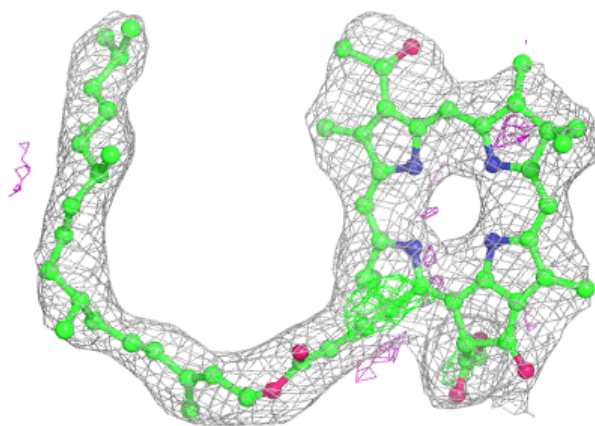


Electron density around U10 M 503:

$2mF_o-DF_c$ (at 0.7 rmsd) in gray
 mF_o-DF_c (at 3 rmsd) in purple (negative)
and green (positive)

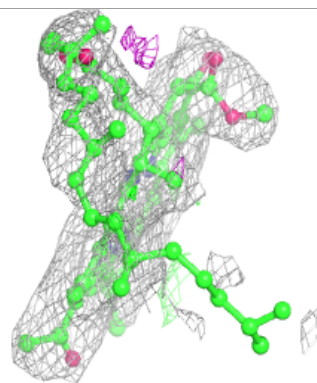
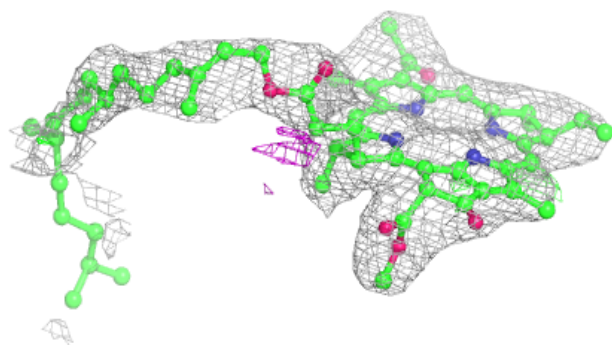
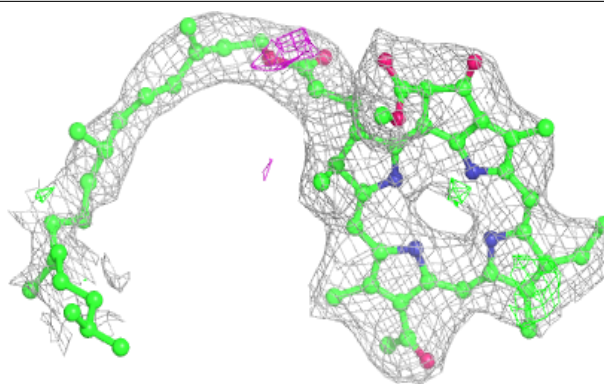
**Electron density around BPH L 402:**

$2mF_o-DF_c$ (at 0.7 rmsd) in gray
 mF_o-DF_c (at 3 rmsd) in purple (negative)
and green (positive)

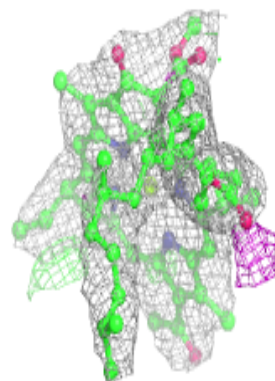
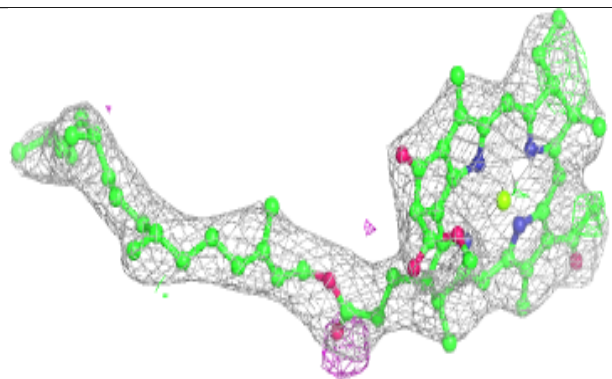
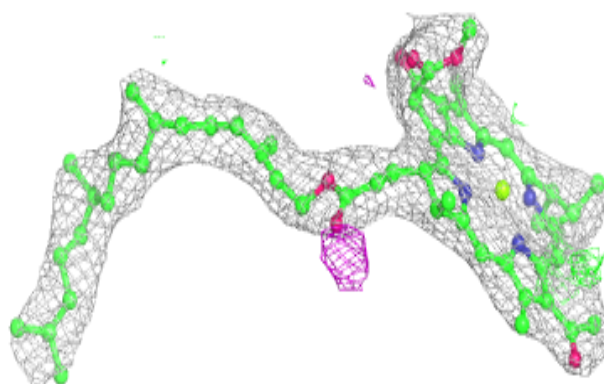


Electron density around BPH M 401:

$2mF_o-DF_c$ (at 0.7 rmsd) in gray
 mF_o-DF_c (at 3 rmsd) in purple (negative)
and green (positive)

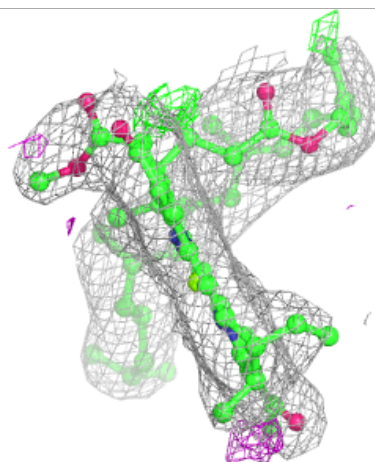
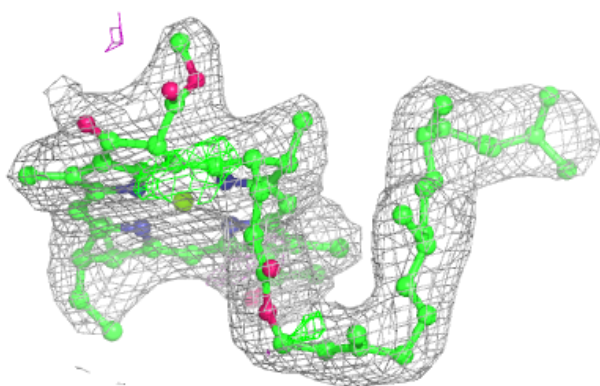
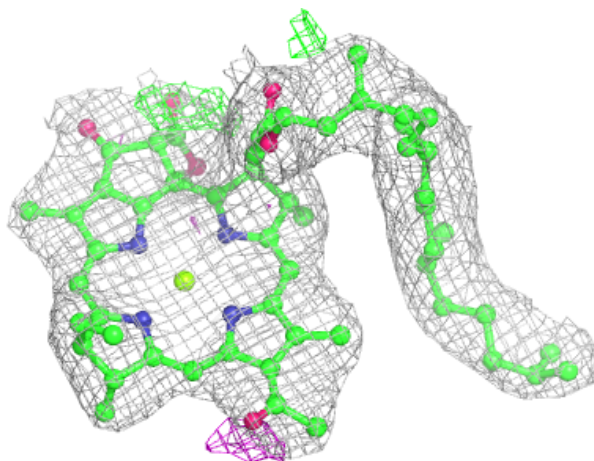
**Electron density around BCL M 502:**

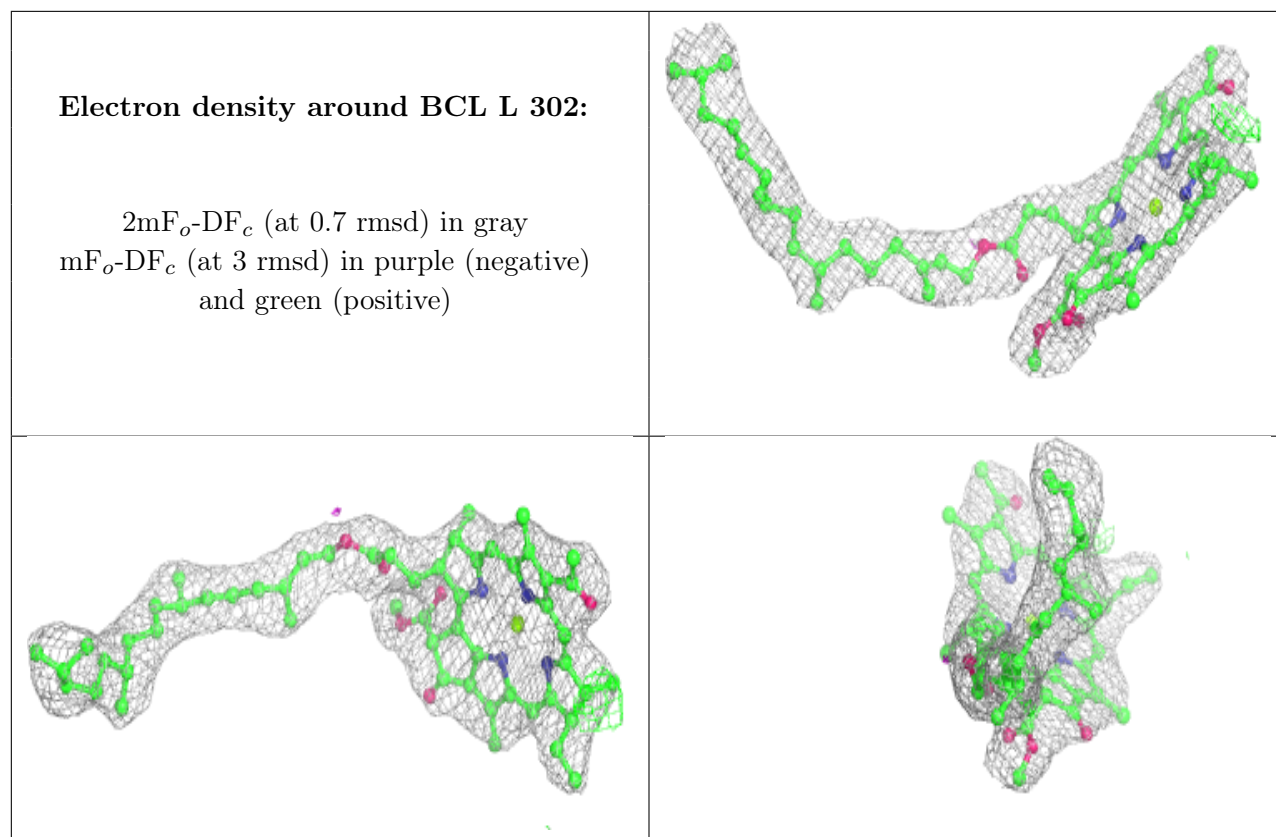
$2mF_o-DF_c$ (at 0.7 rmsd) in gray
 mF_o-DF_c (at 3 rmsd) in purple (negative)
and green (positive)



Electron density around BCL L 304:

$2mF_o-DF_c$ (at 0.7 rmsd) in gray
 mF_o-DF_c (at 3 rmsd) in purple (negative)
and green (positive)





6.5 Other polymers [i](#)

There are no such residues in this entry.