



Full wwPDB X-ray Structure Validation Report ⓘ

May 22, 2020 – 06:27 pm BST

PDB ID : 5K4V
Title : Three-dimensional structure of L-threonine 3-dehydrogenase from *Trypanosoma brucei* bound to NAD⁺ refined to 2.2 angstroms
Authors : Adjogatse, E.A.; Erskine, P.T.; Cooper, J.B.
Deposited on : 2016-05-22
Resolution : 2.20 Å(reported)

This is a Full wwPDB X-ray Structure Validation Report for a publicly released PDB entry.

We welcome your comments at validation@mail.wwpdb.org

A user guide is available at

<https://www.wwpdb.org/validation/2017/XrayValidationReportHelp>

with specific help available everywhere you see the ⓘ symbol.

The following versions of software and data (see [references ⓘ](#)) were used in the production of this report:

MolProbity : 4.02b-467
Mogul : 1.8.5 (274361), CSD as541be (2020)
Xtriage (Phenix) : 1.13
EDS : 2.11
buster-report : 1.1.7 (2018)
Percentile statistics : 20191225.v01 (using entries in the PDB archive December 25th 2019)
Refmac : 5.8.0158
CCP4 : 7.0.044 (Gargrove)
Ideal geometry (proteins) : Engh & Huber (2001)
Ideal geometry (DNA, RNA) : Parkinson et al. (1996)
Validation Pipeline (wwPDB-VP) : 2.11

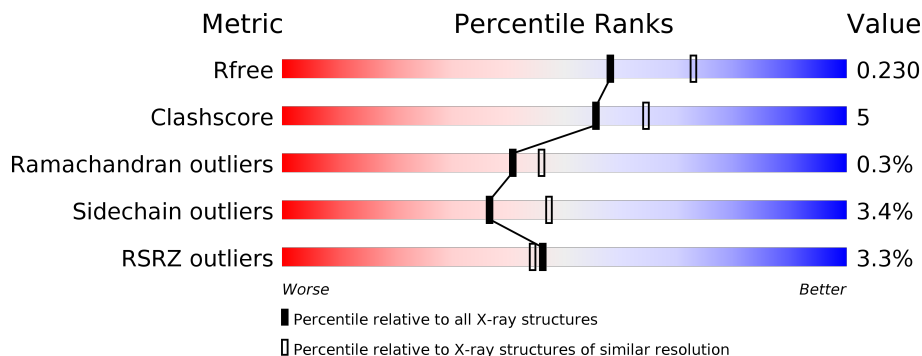
1 Overall quality at a glance

The following experimental techniques were used to determine the structure:

X-RAY DIFFRACTION

The reported resolution of this entry is 2.20 Å.

Percentile scores (ranging between 0-100) for global validation metrics of the entry are shown in the following graphic. The table shows the number of entries on which the scores are based.



Metric	Whole archive (#Entries)	Similar resolution (#Entries, resolution range(Å))
R_{free}	130704	4898 (2.20-2.20)
Clashscore	141614	5594 (2.20-2.20)
Ramachandran outliers	138981	5503 (2.20-2.20)
Sidechain outliers	138945	5504 (2.20-2.20)
RSRZ outliers	127900	4800 (2.20-2.20)

The table below summarises the geometric issues observed across the polymeric chains and their fit to the electron density. The red, orange, yellow and green segments on the lower bar indicate the fraction of residues that contain outliers for ≥ 3 , 2, 1 and 0 types of geometric quality criteria respectively. A grey segment represents the fraction of residues that are not modelled. The numeric value for each fraction is indicated below the corresponding segment, with a dot representing fractions $\leq 5\%$. The upper red bar (where present) indicates the fraction of residues that have poor fit to the electron density. The numeric value is given above the bar.

Mol	Chain	Length	Quality of chain
1	A	320	
1	C	320	

The following table lists non-polymeric compounds, carbohydrate monomers and non-standard residues in protein, DNA, RNA chains that are outliers for geometric or electron-density-fit criteria:

Mol	Type	Chain	Res	Chirality	Geometry	Clashes	Electron density
3	ACT	A	1402	-	-	X	-

2 Entry composition [i](#)

There are 6 unique types of molecules in this entry. The entry contains 5387 atoms, of which 0 are hydrogens and 0 are deuteriums.

In the tables below, the ZeroOcc column contains the number of atoms modelled with zero occupancy, the AltConf column contains the number of residues with at least one atom in alternate conformation and the Trace column contains the number of residues modelled with at most 2 atoms.

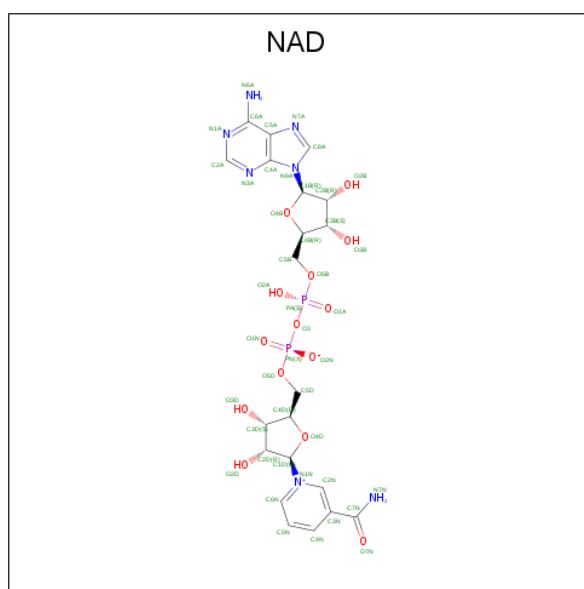
- Molecule 1 is a protein called L-threonine 3-dehydrogenase.

Mol	Chain	Residues	Atoms					ZeroOcc	AltConf	Trace
			Total	C	N	O	S			
1	A	320	2501	1595	416	471	19	0	0	0
1	C	320	2501	1595	416	471	19	0	0	0

There are 2 discrepancies between the modelled and reference sequences:

Chain	Residue	Modelled	Actual	Comment	Reference
A	1002	MET	-	initiating methionine	UNP Q7YW97
C	1002	MET	-	initiating methionine	UNP Q7YW97

- Molecule 2 is NICOTINAMIDE-ADENINE-DINUCLEOTIDE (three-letter code: NAD) (formula: $C_{21}H_{27}N_7O_{14}P_2$).



Mol	Chain	Residues	Atoms					ZeroOcc	AltConf
			Total	C	N	O	P		
2	A	1	44	21	7	14	2	0	0

Continued on next page...

Continued from previous page...

Mol	Chain	Residues	Atoms					ZeroOcc	AltConf
			Total	C	N	O	P		
2	C	1	44	21	7	14	2	0	0

- Molecule 3 is ACETATE ION (three-letter code: ACT) (formula: $C_2H_3O_2$).



Mol	Chain	Residues	Atoms			ZeroOcc	AltConf
			Total	C	O		
3	A	1	4	2	2	0	0
3	A	1	4	2	2	0	0
3	A	1	4	2	2	0	0
3	A	1	4	2	2	0	0
3	A	1	4	2	2	0	0
3	A	1	4	2	2	0	0
3	C	1	4	2	2	0	0
3	C	1	4	2	2	0	0

- Molecule 4 is GLYCEROL (three-letter code: GOL) (formula: $C_3H_8O_3$).



Mol	Chain	Residues	Atoms	ZeroOcc	AltConf
4	A	1	Total C O 6 3 3	0	0
4	A	1	Total C O 6 3 3	0	0
4	A	1	Total C O 6 3 3	0	0
4	C	1	Total C O 6 3 3	0	0
4	C	1	Total C O 6 3 3	0	0
4	C	1	Total C O 6 3 3	0	0
4	C	1	Total C O 6 3 3	0	0
4	C	1	Total C O 6 3 3	0	0

- Molecule 5 is SODIUM ION (three-letter code: NA) (formula: Na).

Mol	Chain	Residues	Atoms	ZeroOcc	AltConf
5	A	1	Total Na 1 1	0	0
5	C	1	Total Na 1 1	0	0

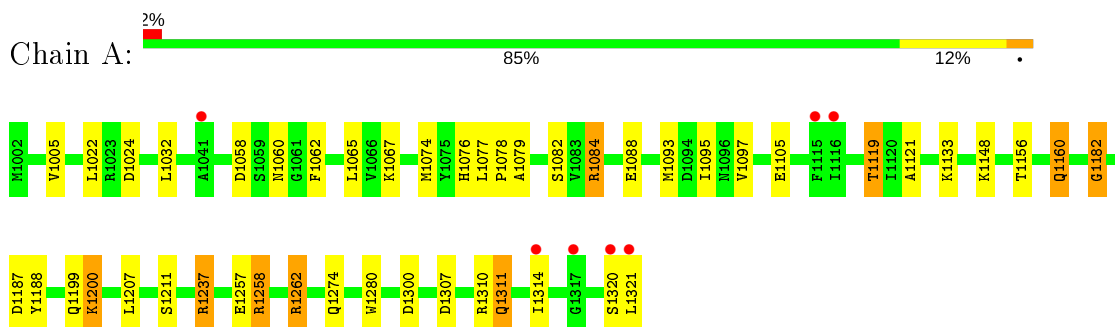
- Molecule 6 is water.

Mol	Chain	Residues	Atoms		ZeroOcc	AltConf
6	A	122	Total 122	O 122	0	0
6	C	93	Total 93	O 93	0	0

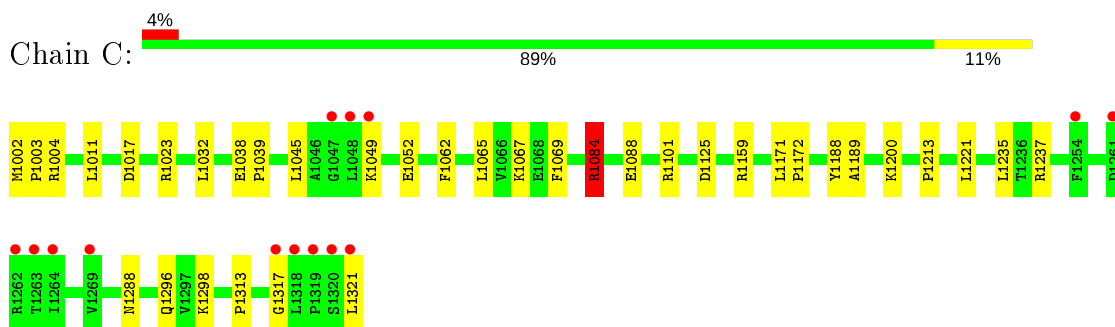
3 Residue-property plots [i](#)

These plots are drawn for all protein, RNA and DNA chains in the entry. The first graphic for a chain summarises the proportions of the various outlier classes displayed in the second graphic. The second graphic shows the sequence view annotated by issues in geometry and electron density. Residues are color-coded according to the number of geometric quality criteria for which they contain at least one outlier: green = 0, yellow = 1, orange = 2 and red = 3 or more. A red dot above a residue indicates a poor fit to the electron density ($RSRZ > 2$). Stretches of 2 or more consecutive residues without any outlier are shown as a green connector. Residues present in the sample, but not in the model, are shown in grey.

- Molecule 1: L-threonine 3-dehydrogenase



- Molecule 1: L-threonine 3-dehydrogenase



4 Data and refinement statistics

Property	Value	Source
Space group	P 21 21 2	Depositor
Cell constants a, b, c, α , β , γ	90.40Å 131.53Å 55.02Å 90.00° 90.00° 90.00°	Depositor
Resolution (Å)	28.23 – 2.20 28.23 – 2.20	Depositor EDS
% Data completeness (in resolution range)	95.3 (28.23-2.20) 95.3 (28.23-2.20)	Depositor EDS
R_{merge}	0.07	Depositor
R_{sym}	(Not available)	Depositor
$\langle I/\sigma(I) \rangle$ ¹	3.47 (at 2.20Å)	Xtrriage
Refinement program	REFMAC 5.7.0032	Depositor
R, R_{free}	0.163 , 0.225 0.170 , 0.230	Depositor DCC
R_{free} test set	1642 reflections (5.06%)	wwPDB-VP
Wilson B-factor (Å ²)	25.9	Xtrriage
Anisotropy	0.030	Xtrriage
Bulk solvent k_{sol} (e/Å ³), B_{sol} (Å ²)	0.40 , 57.5	EDS
L-test for twinning ²	$\langle L \rangle = 0.47$, $\langle L^2 \rangle = 0.30$	Xtrriage
Estimated twinning fraction	No twinning to report.	Xtrriage
F_o, F_c correlation	0.95	EDS
Total number of atoms	5387	wwPDB-VP
Average B, all atoms (Å ²)	29.0	wwPDB-VP

Xtrriage's analysis on translational NCS is as follows: *The largest off-origin peak in the Patterson function is 4.57% of the height of the origin peak. No significant pseudotranslation is detected.*

¹Intensities estimated from amplitudes.

²Theoretical values of $\langle |L| \rangle$, $\langle L^2 \rangle$ for acentric reflections are 0.5, 0.333 respectively for untwinned datasets, and 0.375, 0.2 for perfectly twinned datasets.

5 Model quality [i](#)

5.1 Standard geometry [i](#)

Bond lengths and bond angles in the following residue types are not validated in this section: GOL, ACT, NAD, NA

The Z score for a bond length (or angle) is the number of standard deviations the observed value is removed from the expected value. A bond length (or angle) with $|Z| > 5$ is considered an outlier worth inspection. RMSZ is the root-mean-square of all Z scores of the bond lengths (or angles).

Mol	Chain	Bond lengths		Bond angles	
		RMSZ	# Z >5	RMSZ	# Z >5
1	A	0.80	0/2557	0.89	5/3469 (0.1%)
1	C	0.78	0/2557	0.90	5/3469 (0.1%)
All	All	0.79	0/5114	0.90	10/6938 (0.1%)

There are no bond length outliers.

All (10) bond angle outliers are listed below:

Mol	Chain	Res	Type	Atoms	Z	Observed(°)	Ideal(°)
1	C	1084	ARG	NE-CZ-NH1	7.33	123.97	120.30
1	C	1084	ARG	NE-CZ-NH2	-7.33	116.63	120.30
1	C	1023	ARG	NE-CZ-NH1	7.11	123.85	120.30
1	A	1237	ARG	NE-CZ-NH1	6.39	123.50	120.30
1	A	1084	ARG	NE-CZ-NH1	6.16	123.38	120.30
1	C	1321	LEU	CA-CB-CG	6.06	129.25	115.30
1	C	1125	ASP	CB-CG-OD1	6.03	123.73	118.30
1	A	1300	ASP	CB-CG-OD1	5.75	123.48	118.30
1	A	1237	ARG	NE-CZ-NH2	-5.24	117.68	120.30
1	A	1084	ARG	NE-CZ-NH2	-5.10	117.75	120.30

There are no chirality outliers.

There are no planarity outliers.

5.2 Too-close contacts [i](#)

In the following table, the Non-H and H(model) columns list the number of non-hydrogen atoms and hydrogen atoms in the chain respectively. The H(added) column lists the number of hydrogen atoms added and optimized by MolProbity. The Clashes column lists the number of clashes within the asymmetric unit, whereas Symm-Clashes lists symmetry related clashes.

Mol	Chain	Non-H	H(model)	H(added)	Clashes	Symm-Clashes
1	A	2501	0	2512	28	0
1	C	2501	0	2512	22	0
2	A	44	0	26	2	0
2	C	44	0	26	1	0
3	A	24	0	18	3	0
3	C	8	0	6	1	0
4	A	18	0	24	2	0
4	C	30	0	40	4	0
5	A	1	0	0	0	0
5	C	1	0	0	0	0
6	A	122	0	0	6	0
6	C	93	0	0	2	0
All	All	5387	0	5164	53	0

The all-atom clashscore is defined as the number of clashes found per 1000 atoms (including hydrogen atoms). The all-atom clashscore for this structure is 5.

All (53) close contacts within the same asymmetric unit are listed below, sorted by their clash magnitude.

Atom-1	Atom-2	Interatomic distance (Å)	Clash overlap (Å)
1:A:1032:LEU:HD21	1:A:1065:LEU:HD11	1.49	0.95
6:A:1559:HOH:O	3:C:1403:ACT:H2	1.76	0.84
1:A:1258:ARG:NH1	6:A:1502:HOH:O	2.16	0.78
1:C:1039:PRO:O	6:C:1501:HOH:O	2.06	0.72
1:A:1058:ASP:OD1	6:A:1501:HOH:O	2.09	0.69
1:A:1084:ARG:HD2	1:A:1088:GLU:OE1	1.95	0.67
1:C:1288:ASN:HD21	4:C:1408:GOL:H31	1.60	0.65
1:A:1156:THR:O	1:A:1160:GLN:HG2	1.97	0.65
1:A:1199:GLN:HE21	1:A:1262:ARG:NH2	1.94	0.64
1:C:1159:ARG:NH2	4:C:1407:GOL:O3	2.30	0.63
1:C:1101:ARG:HG3	6:C:1509:HOH:O	1.99	0.62
1:C:1288:ASN:HD21	4:C:1408:GOL:C3	2.13	0.62
1:C:1084:ARG:HD2	1:C:1088:GLU:OE1	2.03	0.58
1:A:1237:ARG:NH1	6:A:1503:HOH:O	2.26	0.58
1:A:1207:LEU:H	1:A:1274:GLN:NE2	2.03	0.57
1:C:1002:MET:HB2	1:C:1003:PRO:HD2	1.84	0.57
1:A:1060:ASN:HD22	3:A:1402:ACT:H3	1.68	0.56
1:C:1200:LYS:HA	1:C:1200:LYS:HE2	1.89	0.55
1:C:1032:LEU:HD11	1:C:1052:GLU:HG3	1.89	0.54
1:C:1032:LEU:HD21	1:C:1065:LEU:HD11	1.89	0.54
1:C:1296:GLN:HE21	1:C:1298:LYS:HD3	1.72	0.54
1:A:1079:ALA:HB3	2:A:1401:NAD:H3D	1.90	0.53

Continued on next page...

Continued from previous page...

Atom-1	Atom-2	Interatomic distance (Å)	Clash overlap (Å)
1:A:1095:ILE:HD12	2:A:1401:NAD:H61A	1.75	0.52
4:A:1410:GOL:C3	6:A:1546:HOH:O	2.59	0.51
1:A:1062:PHE:HZ	1:A:1074:MET:HE1	1.76	0.51
1:A:1060:ASN:ND2	3:A:1402:ACT:H3	2.27	0.50
1:C:1017:ASP:HB3	1:C:1221:LEU:HD11	1.93	0.50
1:C:1288:ASN:ND2	4:C:1408:GOL:H31	2.27	0.49
1:A:1121:ALA:HB2	1:A:1280:TRP:CZ2	2.47	0.49
1:A:1062:PHE:HZ	1:A:1074:MET:CE	2.27	0.48
1:A:1077:LEU:N	1:A:1078:PRO:CD	2.76	0.47
1:A:1182:GLY:O	1:A:1187:ASP:OD2	2.33	0.47
1:C:1188:TYR:CG	1:C:1189:ALA:N	2.83	0.46
1:C:1032:LEU:HD11	1:C:1052:GLU:CG	2.46	0.46
1:A:1105:GLU:OE1	3:A:1406:ACT:C	2.64	0.45
1:C:1002:MET:HB2	1:C:1003:PRO:CD	2.47	0.45
1:A:1076:HIS:CE1	1:A:1078:PRO:HG2	2.53	0.43
1:A:1307:ASP:O	1:A:1311:GLN:HG3	2.18	0.43
1:A:1005:VAL:HG11	1:A:1022:LEU:HD13	2.01	0.43
1:C:1313:PRO:O	1:C:1317:GLY:N	2.51	0.43
1:C:1011:LEU:HD23	1:C:1045:LEU:HD12	2.01	0.43
1:A:1093:MET:O	1:A:1097:VAL:HB	2.19	0.42
1:C:1172:PRO:HB3	1:C:1213:PRO:HB2	2.01	0.42
1:C:1296:GLN:NE2	1:C:1298:LYS:HD3	2.35	0.42
1:A:1257:GLU:HG2	1:A:1262:ARG:O	2.20	0.41
1:A:1200:LYS:HE3	1:A:1200:LYS:HA	2.02	0.41
1:A:1077:LEU:N	1:A:1078:PRO:HD2	2.35	0.41
1:C:1004:ARG:NH1	1:C:1069:PHE:O	2.47	0.41
1:A:1188:TYR:C	1:A:1188:TYR:CD1	2.94	0.41
1:C:1171:LEU:HB2	2:C:1401:NAD:C5N	2.51	0.40
1:A:1119:THR:HG22	1:A:1148:LYS:HG3	2.02	0.40
1:A:1310:ARG:O	1:A:1314:ILE:HD12	2.21	0.40
4:A:1410:GOL:H32	6:A:1546:HOH:O	2.21	0.40

There are no symmetry-related clashes.

5.3 Torsion angles

5.3.1 Protein backbone

In the following table, the Percentiles column shows the percent Ramachandran outliers of the chain as a percentile score with respect to all X-ray entries followed by that with respect to entries of similar resolution.

The Analysed column shows the number of residues for which the backbone conformation was analysed, and the total number of residues.

Mol	Chain	Analysed	Favoured	Allowed	Outliers	Percentiles	
1	A	318/320 (99%)	308 (97%)	8 (2%)	2 (1%)	25	26
1	C	318/320 (99%)	308 (97%)	10 (3%)	0	100	100
All	All	636/640 (99%)	616 (97%)	18 (3%)	2 (0%)	41	46

All (2) Ramachandran outliers are listed below:

Mol	Chain	Res	Type
1	A	1182	GLY
1	A	1320	SER

5.3.2 Protein sidechains [i](#)

In the following table, the Percentiles column shows the percent sidechain outliers of the chain as a percentile score with respect to all X-ray entries followed by that with respect to entries of similar resolution.

The Analysed column shows the number of residues for which the sidechain conformation was analysed, and the total number of residues.

Mol	Chain	Analysed	Rotameric	Outliers	Percentiles	
1	A	277/277 (100%)	265 (96%)	12 (4%)	29	36
1	C	277/277 (100%)	270 (98%)	7 (2%)	47	60
All	All	554/554 (100%)	535 (97%)	19 (3%)	37	47

All (19) residues with a non-rotameric sidechain are listed below:

Mol	Chain	Res	Type
1	A	1024	ASP
1	A	1067	LYS
1	A	1082	SER
1	A	1119	THR
1	A	1133	LYS
1	A	1160	GLN
1	A	1200	LYS
1	A	1211	SER
1	A	1258	ARG
1	A	1262	ARG
1	A	1311	GLN

Continued on next page...

Continued from previous page...

Mol	Chain	Res	Type
1	A	1321	LEU
1	C	1038	GLU
1	C	1049	LYS
1	C	1062	PHE
1	C	1067	LYS
1	C	1084	ARG
1	C	1235	LEU
1	C	1237	ARG

Some sidechains can be flipped to improve hydrogen bonding and reduce clashes. All (10) such sidechains are listed below:

Mol	Chain	Res	Type
1	A	1060	ASN
1	A	1199	GLN
1	A	1274	GLN
1	A	1278	ASN
1	A	1311	GLN
1	C	1060	ASN
1	C	1191	HIS
1	C	1278	ASN
1	C	1288	ASN
1	C	1296	GLN

5.3.3 RNA [i](#)

There are no RNA molecules in this entry.

5.4 Non-standard residues in protein, DNA, RNA chains [i](#)

There are no non-standard protein/DNA/RNA residues in this entry.

5.5 Carbohydrates [i](#)

There are no carbohydrates in this entry.

5.6 Ligand geometry [i](#)

Of 20 ligands modelled in this entry, 2 are monoatomic - leaving 18 for Mogul analysis.

In the following table, the Counts columns list the number of bonds (or angles) for which Mogul statistics could be retrieved, the number of bonds (or angles) that are observed in the model and the number of bonds (or angles) that are defined in the Chemical Component Dictionary. The Link column lists molecule types, if any, to which the group is linked. The Z score for a bond length (or angle) is the number of standard deviations the observed value is removed from the expected value. A bond length (or angle) with $|Z| > 2$ is considered an outlier worth inspection. RMSZ is the root-mean-square of all Z scores of the bond lengths (or angles).

Mol	Type	Chain	Res	Link	Bond lengths			Bond angles		
					Counts	RMSZ	# Z > 2	Counts	RMSZ	# Z > 2
2	NAD	C	1401	-	42,48,48	1.72	5 (11%)	50,73,73	1.54	6 (12%)
4	GOL	A	1409	-	5,5,5	0.45	0	5,5,5	1.22	0
2	NAD	A	1401	-	42,48,48	1.96	5 (11%)	50,73,73	1.42	9 (18%)
4	GOL	A	1410	-	5,5,5	0.52	0	5,5,5	0.93	0
3	ACT	C	1402	-	1,3,3	2.29	1 (100%)	0,3,3	0.00	-
3	ACT	A	1403	-	1,3,3	0.44	0	0,3,3	0.00	-
3	ACT	C	1403	-	1,3,3	3.58	1 (100%)	0,3,3	0.00	-
3	ACT	A	1402	-	1,3,3	0.41	0	0,3,3	0.00	-
4	GOL	C	1407	-	5,5,5	0.59	0	5,5,5	0.50	0
3	ACT	A	1404	-	1,3,3	0.82	0	0,3,3	0.00	-
4	GOL	C	1404	-	5,5,5	0.21	0	5,5,5	0.94	0
3	ACT	A	1407	-	1,3,3	1.29	0	0,3,3	0.00	-
4	GOL	A	1408	-	5,5,5	0.30	0	5,5,5	1.10	0
3	ACT	A	1405	-	1,3,3	0.92	0	0,3,3	0.00	-
4	GOL	C	1408	-	5,5,5	0.31	0	5,5,5	0.64	0
4	GOL	C	1406	-	5,5,5	0.38	0	5,5,5	0.62	0
3	ACT	A	1406	-	1,3,3	1.66	0	0,3,3	0.00	-
4	GOL	C	1405	-	5,5,5	0.67	0	5,5,5	0.80	0

In the following table, the Chirals column lists the number of chiral outliers, the number of chiral centers analysed, the number of these observed in the model and the number defined in the Chemical Component Dictionary. Similar counts are reported in the Torsion and Rings columns. '-' means no outliers of that kind were identified.

Mol	Type	Chain	Res	Link	Chirals	Torsions	Rings
2	NAD	C	1401	-	-	2/26/62/62	0/5/5/5
4	GOL	A	1409	-	-	0/4/4/4	-
2	NAD	A	1401	-	-	4/26/62/62	0/5/5/5
4	GOL	A	1410	-	-	4/4/4/4	-
4	GOL	C	1407	-	-	4/4/4/4	-
4	GOL	C	1404	-	-	4/4/4/4	-
4	GOL	A	1408	-	-	0/4/4/4	-
4	GOL	C	1408	-	-	3/4/4/4	-

Continued on next page...

Continued from previous page...

Mol	Type	Chain	Res	Link	Chirals	Torsions	Rings
4	GOL	C	1406	-	-	4/4/4/4	-
4	GOL	C	1405	-	-	0/4/4/4	-

All (12) bond length outliers are listed below:

Mol	Chain	Res	Type	Atoms	Z	Observed(Å)	Ideal(Å)
2	A	1401	NAD	O7N-C7N	7.14	1.37	1.24
2	A	1401	NAD	C2N-N1N	5.96	1.42	1.35
2	A	1401	NAD	O4D-C1D	5.86	1.49	1.41
2	C	1401	NAD	O7N-C7N	5.11	1.33	1.24
2	C	1401	NAD	O4D-C1D	4.80	1.47	1.41
2	C	1401	NAD	C6N-N1N	3.89	1.44	1.35
2	C	1401	NAD	C2N-N1N	3.83	1.39	1.35
3	C	1403	ACT	CH3-C	3.58	1.53	1.48
2	A	1401	NAD	C6N-N1N	2.95	1.42	1.35
2	C	1401	NAD	O4D-C4D	-2.82	1.38	1.45
2	A	1401	NAD	O4B-C4B	2.35	1.50	1.45
3	C	1402	ACT	CH3-C	2.29	1.51	1.48

All (15) bond angle outliers are listed below:

Mol	Chain	Res	Type	Atoms	Z	Observed(°)	Ideal(°)
2	C	1401	NAD	N3A-C2A-N1A	-6.48	118.56	128.68
2	A	1401	NAD	N3A-C2A-N1A	-3.58	123.08	128.68
2	C	1401	NAD	PN-O3-PA	-3.54	120.69	132.83
2	A	1401	NAD	PN-O3-PA	-3.16	121.97	132.83
2	C	1401	NAD	C1B-N9A-C4A	-2.97	121.43	126.64
2	A	1401	NAD	C5B-C4B-C3B	-2.93	104.19	115.18
2	C	1401	NAD	C2N-C3N-C4N	2.93	121.58	118.26
2	C	1401	NAD	C2A-N1A-C6A	2.86	123.64	118.75
2	A	1401	NAD	C2N-C3N-C4N	2.78	121.41	118.26
2	A	1401	NAD	C1B-N9A-C4A	-2.75	121.81	126.64
2	A	1401	NAD	C6N-N1N-C2N	-2.43	119.75	121.97
2	C	1401	NAD	C4A-C5A-N7A	-2.28	107.02	109.40
2	A	1401	NAD	O7N-C7N-N7N	2.26	125.78	122.58
2	A	1401	NAD	O2A-PA-O1A	2.14	122.81	112.24
2	A	1401	NAD	O4B-C1B-C2B	-2.13	103.81	106.93

There are no chirality outliers.

All (25) torsion outliers are listed below:

Mol	Chain	Res	Type	Atoms
2	A	1401	NAD	C5D-O5D-PN-O1N
4	A	1410	GOL	O1-C1-C2-C3
4	C	1404	GOL	O1-C1-C2-O2
4	C	1404	GOL	O1-C1-C2-C3
4	C	1404	GOL	C1-C2-C3-O3
4	C	1408	GOL	O1-C1-C2-O2
4	C	1406	GOL	C1-C2-C3-O3
4	A	1410	GOL	C1-C2-C3-O3
4	C	1407	GOL	O1-C1-C2-C3
4	C	1407	GOL	C1-C2-C3-O3
4	C	1408	GOL	O1-C1-C2-C3
4	C	1408	GOL	C1-C2-C3-O3
4	C	1404	GOL	O2-C2-C3-O3
4	C	1406	GOL	O2-C2-C3-O3
4	C	1407	GOL	O1-C1-C2-O2
4	A	1410	GOL	O2-C2-C3-O3
2	C	1401	NAD	C5D-O5D-PN-O3
2	A	1401	NAD	C5D-O5D-PN-O3
4	A	1410	GOL	O1-C1-C2-O2
4	C	1406	GOL	O1-C1-C2-C3
2	A	1401	NAD	C5D-O5D-PN-O2N
4	C	1406	GOL	O1-C1-C2-O2
2	C	1401	NAD	O4B-C4B-C5B-O5B
2	A	1401	NAD	O4B-C4B-C5B-O5B
4	C	1407	GOL	O2-C2-C3-O3

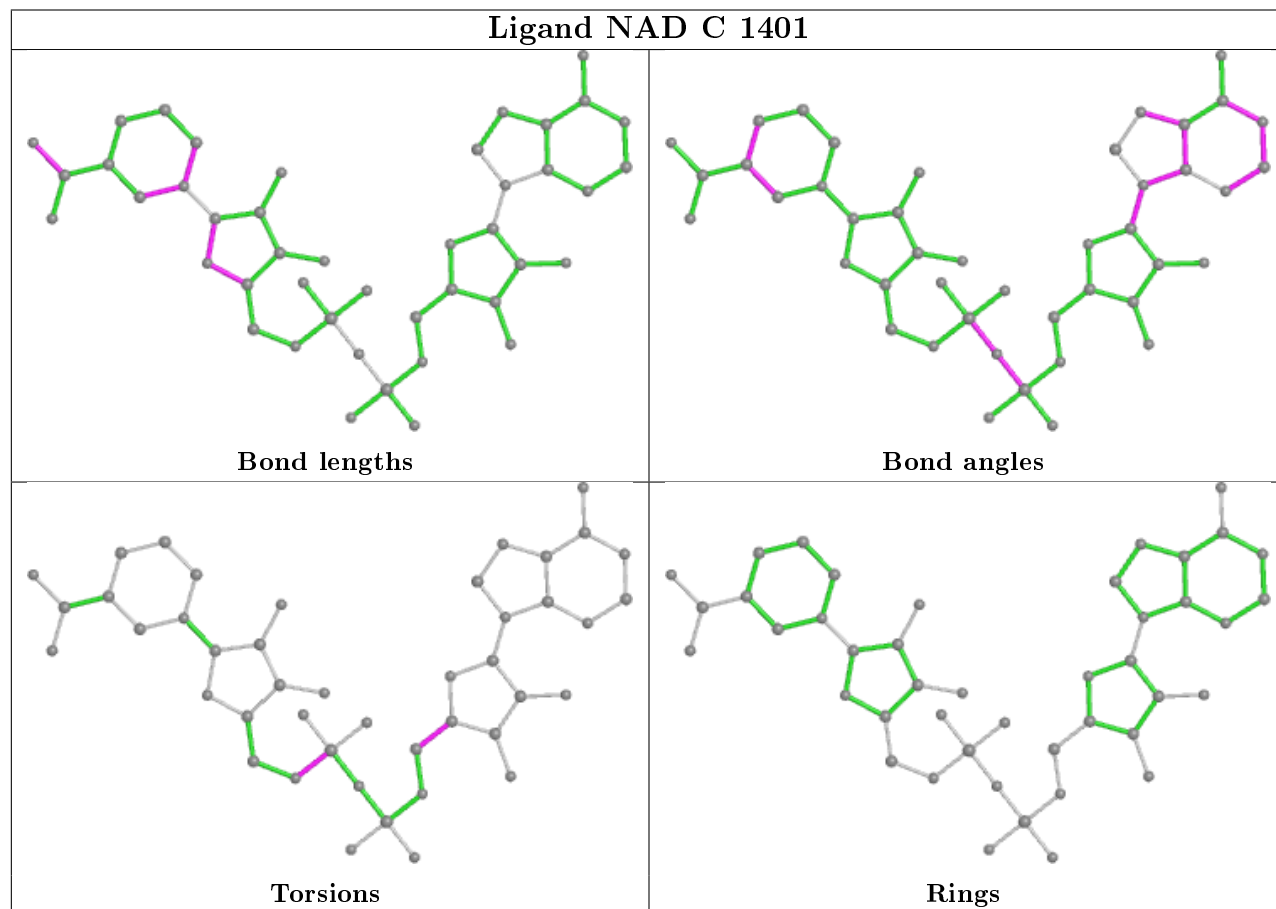
There are no ring outliers.

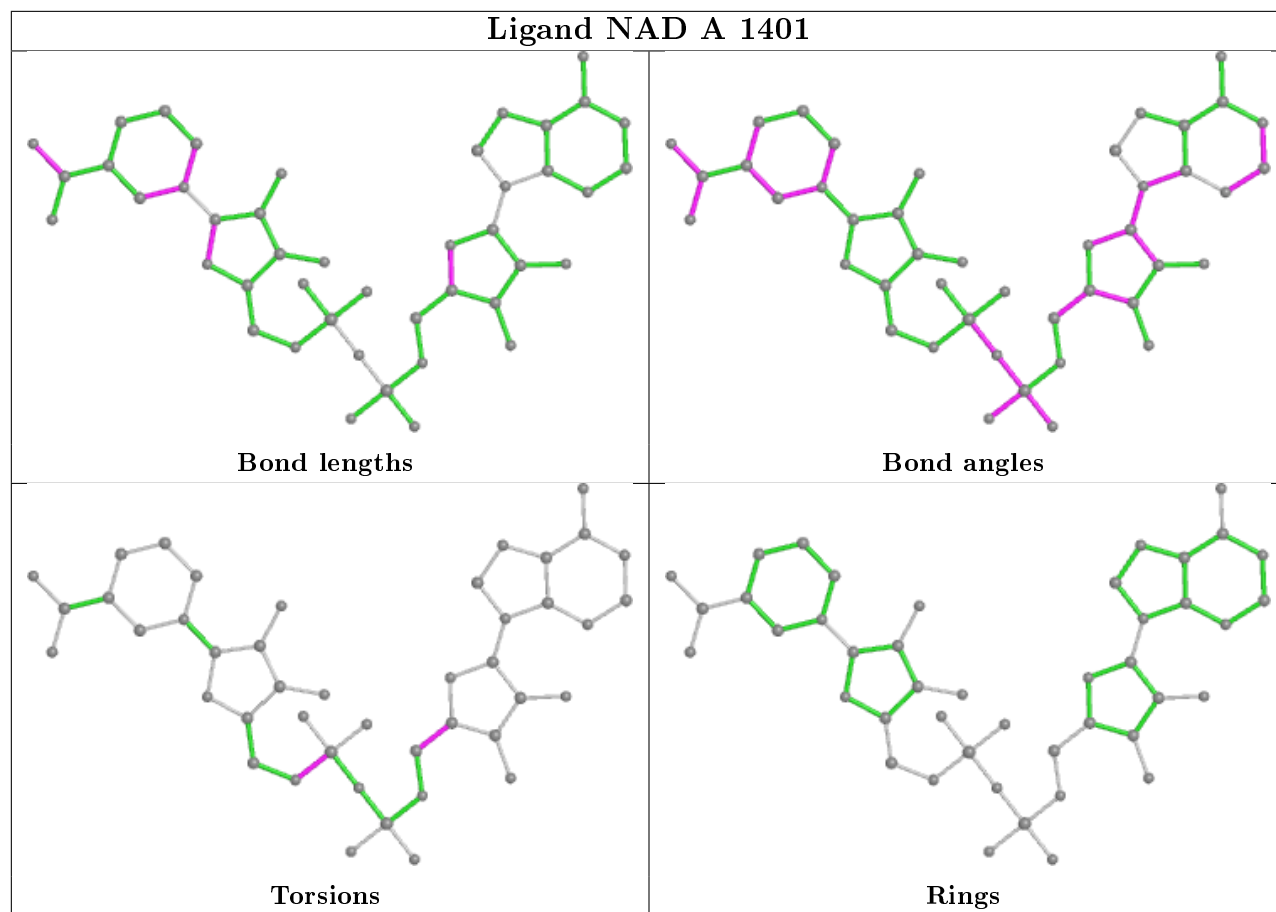
8 monomers are involved in 13 short contacts:

Mol	Chain	Res	Type	Clashes	Symm-Clashes
2	C	1401	NAD	1	0
2	A	1401	NAD	2	0
4	A	1410	GOL	2	0
3	C	1403	ACT	1	0
3	A	1402	ACT	2	0
4	C	1407	GOL	1	0
4	C	1408	GOL	3	0
3	A	1406	ACT	1	0

The following is a two-dimensional graphical depiction of Mogul quality analysis of bond lengths, bond angles, torsion angles, and ring geometry for all instances of the Ligand of Interest. In addition, ligands with molecular weight > 250 and outliers as shown on the validation Tables will also be included. For torsion angles, if less than 5% of the Mogul distribution of torsion angles is

within 10 degrees of the torsion angle in question, then that torsion angle is considered an outlier. Any bond that is central to one or more torsion angles identified as an outlier by Mogul will be highlighted in the graph. For rings, the root-mean-square deviation (RMSD) between the ring in question and similar rings identified by Mogul is calculated over all ring torsion angles. If the average RMSD is greater than 60 degrees and the minimal RMSD between the ring in question and any Mogul-identified rings is also greater than 60 degrees, then that ring is considered an outlier. The outliers are highlighted in purple. The color gray indicates Mogul did not find sufficient equivalents in the CSD to analyse the geometry.





5.7 Other polymers [i](#)

There are no such residues in this entry.

5.8 Polymer linkage issues [i](#)

There are no chain breaks in this entry.

6 Fit of model and data

6.1 Protein, DNA and RNA chains

In the following table, the column labelled ‘#RSRZ> 2’ contains the number (and percentage) of RSRZ outliers, followed by percent RSRZ outliers for the chain as percentile scores relative to all X-ray entries and entries of similar resolution. The OWAB column contains the minimum, median, 95th percentile and maximum values of the occupancy-weighted average B-factor per residue. The column labelled ‘Q< 0.9’ lists the number of (and percentage) of residues with an average occupancy less than 0.9.

Mol	Chain	Analysed	<RSRZ>	#RSRZ>2	OWAB(Å ²)	Q<0.9
1	A	320/320 (100%)	-0.20	7 (2%) 62 59	15, 25, 47, 77	0
1	C	320/320 (100%)	-0.03	14 (4%) 34 32	14, 27, 54, 82	0
All	All	640/640 (100%)	-0.11	21 (3%) 46 44	14, 26, 50, 82	0

All (21) RSRZ outliers are listed below:

Mol	Chain	Res	Type	RSRZ
1	A	1321	LEU	7.7
1	C	1321	LEU	6.1
1	C	1262	ARG	5.4
1	C	1049	LYS	3.8
1	C	1263	THR	3.6
1	A	1317	GLY	3.6
1	C	1261	ASP	3.6
1	C	1317	GLY	3.4
1	C	1269	VAL	3.3
1	C	1319	PRO	3.1
1	A	1320	SER	2.8
1	A	1314	ILE	2.8
1	A	1116	ILE	2.7
1	C	1318	LEU	2.5
1	C	1320	SER	2.5
1	C	1047	GLY	2.3
1	C	1254	PHE	2.2
1	C	1264	ILE	2.2
1	C	1048	LEU	2.2
1	A	1115	PHE	2.1
1	A	1041	ALA	2.0

6.2 Non-standard residues in protein, DNA, RNA chains [i](#)

There are no non-standard protein/DNA/RNA residues in this entry.

6.3 Carbohydrates [i](#)

There are no carbohydrates in this entry.

6.4 Ligands [i](#)

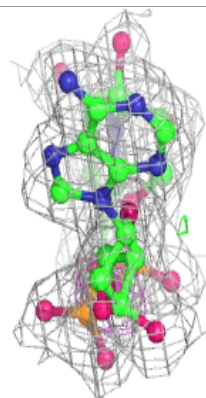
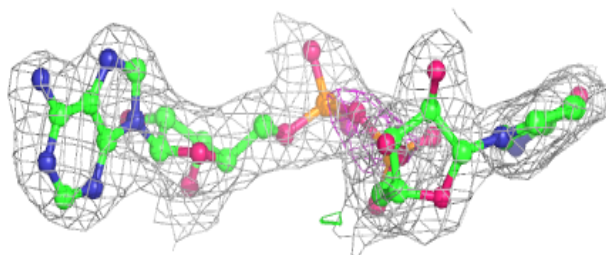
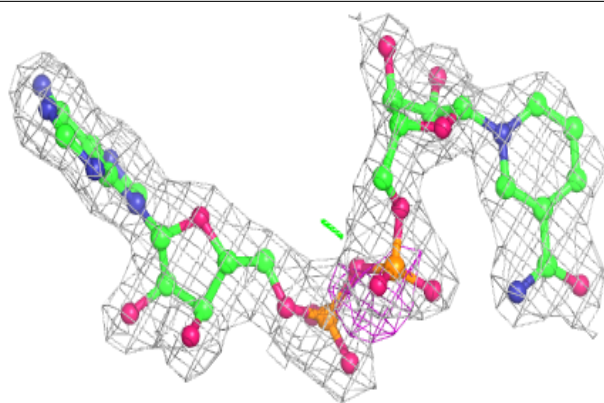
In the following table, the Atoms column lists the number of modelled atoms in the group and the number defined in the chemical component dictionary. The B-factors column lists the minimum, median, 95th percentile and maximum values of B factors of atoms in the group. The column labelled 'Q< 0.9' lists the number of atoms with occupancy less than 0.9.

Mol	Type	Chain	Res	Atoms	RSCC	RSR	B-factors(\AA^2)	Q<0.9
3	ACT	C	1403	4/4	0.71	0.23	47,52,52,57	0
4	GOL	C	1407	6/6	0.77	0.25	37,41,45,46	0
5	NA	A	1411	1/1	0.78	0.26	53,53,53,53	0
3	ACT	A	1406	4/4	0.81	0.27	52,57,57,60	0
4	GOL	C	1406	6/6	0.82	0.21	39,50,55,55	0
4	GOL	A	1409	6/6	0.87	0.15	37,40,42,47	0
4	GOL	C	1405	6/6	0.87	0.14	39,41,44,47	0
3	ACT	A	1402	4/4	0.88	0.24	53,54,57,58	0
4	GOL	C	1408	6/6	0.91	0.20	35,44,47,53	0
3	ACT	A	1405	4/4	0.91	0.14	54,55,58,59	0
3	ACT	A	1407	4/4	0.92	0.16	33,38,42,46	0
4	GOL	A	1410	6/6	0.93	0.13	30,35,39,41	0
3	ACT	C	1402	4/4	0.93	0.20	30,35,36,36	0
3	ACT	A	1404	4/4	0.93	0.17	50,55,56,57	0
5	NA	C	1409	1/1	0.94	0.30	52,52,52,52	0
2	NAD	A	1401	44/44	0.94	0.10	25,30,34,36	0
2	NAD	C	1401	44/44	0.95	0.11	21,26,29,31	0
4	GOL	A	1408	6/6	0.95	0.11	33,38,39,42	0
3	ACT	A	1403	4/4	0.96	0.07	53,54,54,57	0
4	GOL	C	1404	6/6	0.97	0.08	33,44,45,46	0

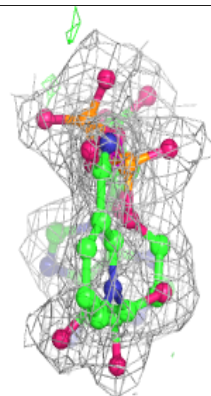
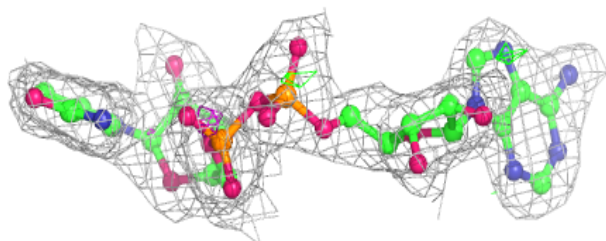
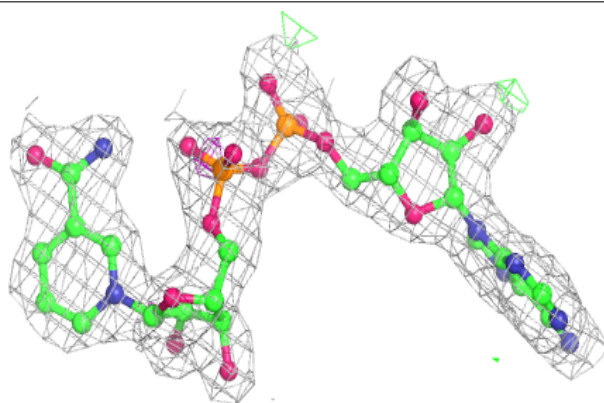
The following is a graphical depiction of the model fit to experimental electron density of all instances of the Ligand of Interest. In addition, ligands with molecular weight > 250 and outliers as shown on the geometry validation Tables will also be included. Each fit is shown from different orientation to approximate a three-dimensional view.

Electron density around NAD A 1401:

$2mF_o-DF_c$ (at 0.7 rmsd) in gray
 mF_o-DF_c (at 3 rmsd) in purple (negative)
and green (positive)

**Electron density around NAD C 1401:**

$2mF_o-DF_c$ (at 0.7 rmsd) in gray
 mF_o-DF_c (at 3 rmsd) in purple (negative)
and green (positive)



6.5 Other polymers

There are no such residues in this entry.