



Full wwPDB EM Validation Report ⓘ

May 15, 2024 – 12:14 PM JST

PDB ID : 8K3S
EMDB ID : EMD-36858
Title : Structure of PKD2-F604P complex
Authors : Chen, M.Y.; Su, Q.; Wang, Z.F.; Yu, Y.
Deposited on : 2023-07-16
Resolution : 3.00 Å(reported)

This is a Full wwPDB EM Validation Report for a publicly released PDB entry.

We welcome your comments at validation@mail.wwpdb.org

A user guide is available at

<https://www.wwpdb.org/validation/2017/EMValidationReportHelp>

with specific help available everywhere you see the ⓘ symbol.

The types of validation reports are described at

<http://www.wwpdb.org/validation/2017/FAQs#types>.

The following versions of software and data (see [references ⓘ](#)) were used in the production of this report:

EMDB validation analysis : 0.0.1.dev92
Mogul : 1.8.5 (274361), CSD as541be (2020)
MolProbity : 4.02b-467
buster-report : 1.1.7 (2018)
Percentile statistics : 20191225.v01 (using entries in the PDB archive December 25th 2019)
MapQ : 1.9.13
Ideal geometry (proteins) : Engh & Huber (2001)
Ideal geometry (DNA, RNA) : Parkinson et al. (1996)
Validation Pipeline (wwPDB-VP) : 2.36.2

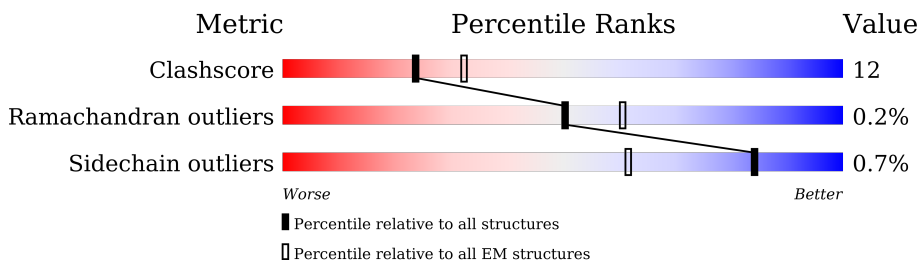
1 Overall quality at a glance

The following experimental techniques were used to determine the structure:

ELECTRON MICROSCOPY

The reported resolution of this entry is 3.00 Å.

Percentile scores (ranging between 0-100) for global validation metrics of the entry are shown in the following graphic. The table shows the number of entries on which the scores are based.



Metric	Whole archive (#Entries)	EM structures (#Entries)
Clashscore	158937	4297
Ramachandran outliers	154571	4023
Sidechain outliers	154315	3826

The table below summarises the geometric issues observed across the polymeric chains and their fit to the map. The red, orange, yellow and green segments of the bar indicate the fraction of residues that contain outliers for ≥ 3 , 2, 1 and 0 types of geometric quality criteria respectively. A grey segment represents the fraction of residues that are not modelled. The numeric value for each fraction is indicated below the corresponding segment, with a dot representing fractions $\leq 5\%$. The upper red bar (where present) indicates the fraction of residues that have poor fit to the EM map (all-atom inclusion $< 40\%$). The numeric value is given above the bar.

Mol	Chain	Length	Quality of chain
1	A	571	 63% 19% 18%
1	B	571	 65% 17% 18%
1	C	571	 64% 18% 18%
1	D	571	 63% 18% 18%

2 Entry composition [i](#)

There are 4 unique types of molecules in this entry. The entry contains 16009 atoms, of which 248 are hydrogens and 0 are deuteriums.

In the tables below, the AltConf column contains the number of residues with at least one atom in alternate conformation and the Trace column contains the number of residues modelled with at most 2 atoms.

- Molecule 1 is a protein called Polycystin-2.

Mol	Chain	Residues	Atoms					AltConf	Trace
1	A	466	Total	C	N	O	S	0	0
			3856	2550	607	679	20		
1	B	466	Total	C	N	O	S	0	0
			3856	2550	607	679	20		
1	C	466	Total	C	N	O	S	0	0
			3856	2550	607	679	20		
1	D	466	Total	C	N	O	S	0	0
			3856	2550	607	679	20		

There are 148 discrepancies between the modelled and reference sequences:

Chain	Residue	Modelled	Actual	Comment	Reference
A	149	MET	-	initiating methionine	UNP Q13563
A	150	SER	-	expression tag	UNP Q13563
A	151	ALA	-	expression tag	UNP Q13563
A	152	TRP	-	expression tag	UNP Q13563
A	153	SER	-	expression tag	UNP Q13563
A	154	HIS	-	expression tag	UNP Q13563
A	155	PRO	-	expression tag	UNP Q13563
A	156	GLN	-	expression tag	UNP Q13563
A	157	PHE	-	expression tag	UNP Q13563
A	158	GLU	-	expression tag	UNP Q13563
A	159	LYS	-	expression tag	UNP Q13563
A	160	GLY	-	expression tag	UNP Q13563
A	161	GLY	-	expression tag	UNP Q13563
A	162	GLY	-	expression tag	UNP Q13563
A	163	SER	-	expression tag	UNP Q13563
A	164	GLY	-	expression tag	UNP Q13563
A	165	GLY	-	expression tag	UNP Q13563
A	166	GLY	-	expression tag	UNP Q13563
A	167	SER	-	expression tag	UNP Q13563
A	168	GLY	-	expression tag	UNP Q13563
A	169	GLY	-	expression tag	UNP Q13563
A	170	SER	-	expression tag	UNP Q13563

Continued on next page...

Continued from previous page...

Chain	Residue	Modelled	Actual	Comment	Reference
A	171	ALA	-	expression tag	UNP Q13563
A	172	TRP	-	expression tag	UNP Q13563
A	173	SER	-	expression tag	UNP Q13563
A	174	HIS	-	expression tag	UNP Q13563
A	175	PRO	-	expression tag	UNP Q13563
A	176	GLN	-	expression tag	UNP Q13563
A	177	PHE	-	expression tag	UNP Q13563
A	178	GLU	-	expression tag	UNP Q13563
A	179	LYS	-	expression tag	UNP Q13563
A	180	GLY	-	expression tag	UNP Q13563
A	181	SER	-	expression tag	UNP Q13563
A	182	ALA	-	expression tag	UNP Q13563
A	183	ALA	-	expression tag	UNP Q13563
A	184	ALA	-	expression tag	UNP Q13563
A	604	PRO	PHE	engineered mutation	UNP Q13563
B	149	MET	-	initiating methionine	UNP Q13563
B	150	SER	-	expression tag	UNP Q13563
B	151	ALA	-	expression tag	UNP Q13563
B	152	TRP	-	expression tag	UNP Q13563
B	153	SER	-	expression tag	UNP Q13563
B	154	HIS	-	expression tag	UNP Q13563
B	155	PRO	-	expression tag	UNP Q13563
B	156	GLN	-	expression tag	UNP Q13563
B	157	PHE	-	expression tag	UNP Q13563
B	158	GLU	-	expression tag	UNP Q13563
B	159	LYS	-	expression tag	UNP Q13563
B	160	GLY	-	expression tag	UNP Q13563
B	161	GLY	-	expression tag	UNP Q13563
B	162	GLY	-	expression tag	UNP Q13563
B	163	SER	-	expression tag	UNP Q13563
B	164	GLY	-	expression tag	UNP Q13563
B	165	GLY	-	expression tag	UNP Q13563
B	166	GLY	-	expression tag	UNP Q13563
B	167	SER	-	expression tag	UNP Q13563
B	168	GLY	-	expression tag	UNP Q13563
B	169	GLY	-	expression tag	UNP Q13563
B	170	SER	-	expression tag	UNP Q13563
B	171	ALA	-	expression tag	UNP Q13563
B	172	TRP	-	expression tag	UNP Q13563
B	173	SER	-	expression tag	UNP Q13563
B	174	HIS	-	expression tag	UNP Q13563
B	175	PRO	-	expression tag	UNP Q13563

Continued on next page...

Continued from previous page...

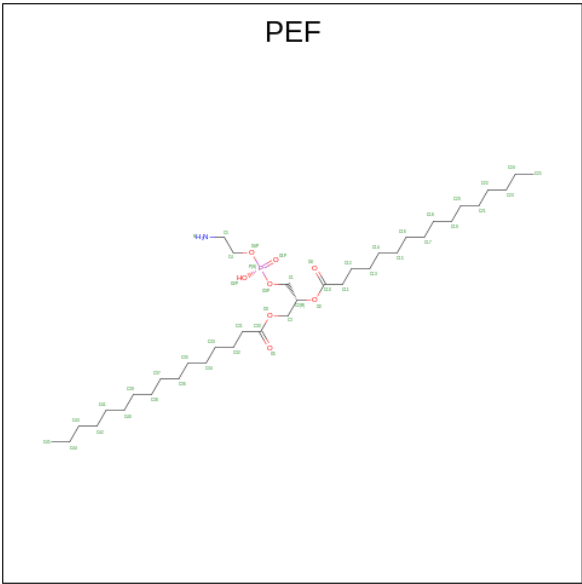
Chain	Residue	Modelled	Actual	Comment	Reference
B	176	GLN	-	expression tag	UNP Q13563
B	177	PHE	-	expression tag	UNP Q13563
B	178	GLU	-	expression tag	UNP Q13563
B	179	LYS	-	expression tag	UNP Q13563
B	180	GLY	-	expression tag	UNP Q13563
B	181	SER	-	expression tag	UNP Q13563
B	182	ALA	-	expression tag	UNP Q13563
B	183	ALA	-	expression tag	UNP Q13563
B	184	ALA	-	expression tag	UNP Q13563
B	604	PRO	PHE	engineered mutation	UNP Q13563
C	149	MET	-	initiating methionine	UNP Q13563
C	150	SER	-	expression tag	UNP Q13563
C	151	ALA	-	expression tag	UNP Q13563
C	152	TRP	-	expression tag	UNP Q13563
C	153	SER	-	expression tag	UNP Q13563
C	154	HIS	-	expression tag	UNP Q13563
C	155	PRO	-	expression tag	UNP Q13563
C	156	GLN	-	expression tag	UNP Q13563
C	157	PHE	-	expression tag	UNP Q13563
C	158	GLU	-	expression tag	UNP Q13563
C	159	LYS	-	expression tag	UNP Q13563
C	160	GLY	-	expression tag	UNP Q13563
C	161	GLY	-	expression tag	UNP Q13563
C	162	GLY	-	expression tag	UNP Q13563
C	163	SER	-	expression tag	UNP Q13563
C	164	GLY	-	expression tag	UNP Q13563
C	165	GLY	-	expression tag	UNP Q13563
C	166	GLY	-	expression tag	UNP Q13563
C	167	SER	-	expression tag	UNP Q13563
C	168	GLY	-	expression tag	UNP Q13563
C	169	GLY	-	expression tag	UNP Q13563
C	170	SER	-	expression tag	UNP Q13563
C	171	ALA	-	expression tag	UNP Q13563
C	172	TRP	-	expression tag	UNP Q13563
C	173	SER	-	expression tag	UNP Q13563
C	174	HIS	-	expression tag	UNP Q13563
C	175	PRO	-	expression tag	UNP Q13563
C	176	GLN	-	expression tag	UNP Q13563
C	177	PHE	-	expression tag	UNP Q13563
C	178	GLU	-	expression tag	UNP Q13563
C	179	LYS	-	expression tag	UNP Q13563
C	180	GLY	-	expression tag	UNP Q13563

Continued on next page...

Continued from previous page...

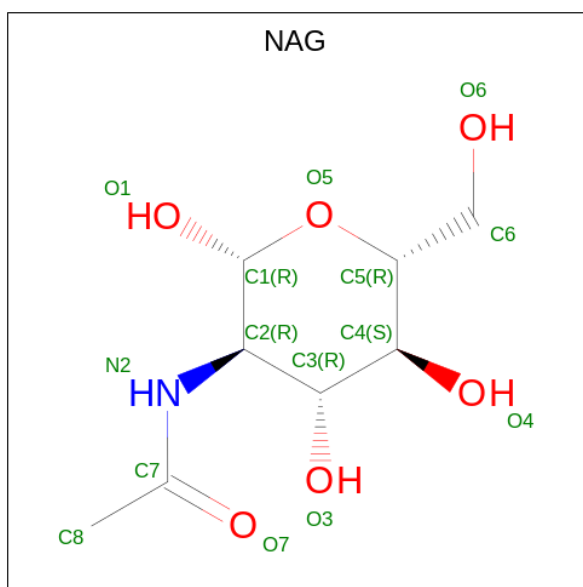
Chain	Residue	Modelled	Actual	Comment	Reference
C	181	SER	-	expression tag	UNP Q13563
C	182	ALA	-	expression tag	UNP Q13563
C	183	ALA	-	expression tag	UNP Q13563
C	184	ALA	-	expression tag	UNP Q13563
C	604	PRO	PHE	engineered mutation	UNP Q13563
D	149	MET	-	initiating methionine	UNP Q13563
D	150	SER	-	expression tag	UNP Q13563
D	151	ALA	-	expression tag	UNP Q13563
D	152	TRP	-	expression tag	UNP Q13563
D	153	SER	-	expression tag	UNP Q13563
D	154	HIS	-	expression tag	UNP Q13563
D	155	PRO	-	expression tag	UNP Q13563
D	156	GLN	-	expression tag	UNP Q13563
D	157	PHE	-	expression tag	UNP Q13563
D	158	GLU	-	expression tag	UNP Q13563
D	159	LYS	-	expression tag	UNP Q13563
D	160	GLY	-	expression tag	UNP Q13563
D	161	GLY	-	expression tag	UNP Q13563
D	162	GLY	-	expression tag	UNP Q13563
D	163	SER	-	expression tag	UNP Q13563
D	164	GLY	-	expression tag	UNP Q13563
D	165	GLY	-	expression tag	UNP Q13563
D	166	GLY	-	expression tag	UNP Q13563
D	167	SER	-	expression tag	UNP Q13563
D	168	GLY	-	expression tag	UNP Q13563
D	169	GLY	-	expression tag	UNP Q13563
D	170	SER	-	expression tag	UNP Q13563
D	171	ALA	-	expression tag	UNP Q13563
D	172	TRP	-	expression tag	UNP Q13563
D	173	SER	-	expression tag	UNP Q13563
D	174	HIS	-	expression tag	UNP Q13563
D	175	PRO	-	expression tag	UNP Q13563
D	176	GLN	-	expression tag	UNP Q13563
D	177	PHE	-	expression tag	UNP Q13563
D	178	GLU	-	expression tag	UNP Q13563
D	179	LYS	-	expression tag	UNP Q13563
D	180	GLY	-	expression tag	UNP Q13563
D	181	SER	-	expression tag	UNP Q13563
D	182	ALA	-	expression tag	UNP Q13563
D	183	ALA	-	expression tag	UNP Q13563
D	184	ALA	-	expression tag	UNP Q13563
D	604	PRO	PHE	engineered mutation	UNP Q13563

- Molecule 2 is DI-PALMITOYL-3-SN-PHOSPHATIDYLETHANOLAMINE (three-letter code: PEF) (formula: $C_{37}H_{74}NO_8P$) (labeled as "Ligand of Interest" by depositor).



Mol	Chain	Residues	Atoms						AltConf
2	A	1	Total	C	H	N	O	P	0
			104	32	62	1	8	1	
2	B	1	Total	C	H	N	O	P	0
			104	32	62	1	8	1	
2	C	1	Total	C	H	N	O	P	0
			104	32	62	1	8	1	
2	D	1	Total	C	H	N	O	P	0
			104	32	62	1	8	1	

- Molecule 3 is 2-acetamido-2-deoxy-beta-D-glucopyranose (three-letter code: NAG) (formula: $C_8H_{15}NO_6$).



Mol	Chain	Residues	Atoms				AltConf
3	A	1	Total	C	N	O	0
			14	8	1	5	
3	A	1	Total	C	N	O	0
			14	8	1	5	
3	A	1	Total	C	N	O	0
			14	8	1	5	
3	B	1	Total	C	N	O	0
			14	8	1	5	
3	B	1	Total	C	N	O	0
			14	8	1	5	
3	B	1	Total	C	N	O	0
			14	8	1	5	
3	C	1	Total	C	N	O	0
			14	8	1	5	
3	C	1	Total	C	N	O	0
			14	8	1	5	
3	C	1	Total	C	N	O	0
			14	8	1	5	
3	D	1	Total	C	N	O	0
			14	8	1	5	
3	D	1	Total	C	N	O	0
			14	8	1	5	
3	D	1	Total	C	N	O	0
			14	8	1	5	

- Molecule 4 is CALCIUM ION (three-letter code: CA) (formula: Ca).

Mol	Chain	Residues	Atoms		AltConf
4	A	1	Total	Ca	0
			1	1	

LYS
LEU
LYS
LEU
LYS
LYS

4 Experimental information

Property	Value	Source
EM reconstruction method	SINGLE PARTICLE	Depositor
Imposed symmetry	POINT, Not provided	
Number of particles used	413044	Depositor
Resolution determination method	FSC 0.143 CUT-OFF	Depositor
CTF correction method	NONE	Depositor
Microscope	FEI TITAN KRIOS	Depositor
Voltage (kV)	300	Depositor
Electron dose ($e^-/\text{\AA}^2$)	50	Depositor
Minimum defocus (nm)	1200	Depositor
Maximum defocus (nm)	2000	Depositor
Magnification	Not provided	
Image detector	GATAN K3 (6k x 4k)	Depositor
Maximum map value	0.176	Depositor
Minimum map value	-0.085	Depositor
Average map value	0.000	Depositor
Map value standard deviation	0.006	Depositor
Recommended contour level	0.02	Depositor
Map size (\AA)	260.88, 260.88, 260.88	wwPDB
Map dimensions	240, 240, 240	wwPDB
Map angles ($^\circ$)	90.0, 90.0, 90.0	wwPDB
Pixel spacing (\AA)	1.087, 1.087, 1.087	Depositor

5 Model quality

5.1 Standard geometry

Bond lengths and bond angles in the following residue types are not validated in this section: NAG, PEF, CA

The Z score for a bond length (or angle) is the number of standard deviations the observed value is removed from the expected value. A bond length (or angle) with $|Z| > 5$ is considered an outlier worth inspection. RMSZ is the root-mean-square of all Z scores of the bond lengths (or angles).

Mol	Chain	Bond lengths		Bond angles	
		RMSZ	$\# Z > 5$	RMSZ	$\# Z > 5$
1	A	0.26	0/3961	0.49	1/5376 (0.0%)
1	B	0.26	0/3961	0.49	1/5376 (0.0%)
1	C	0.26	0/3961	0.49	1/5376 (0.0%)
1	D	0.26	0/3961	0.49	1/5376 (0.0%)
All	All	0.26	0/15844	0.49	4/21504 (0.0%)

There are no bond length outliers.

All (4) bond angle outliers are listed below:

Mol	Chain	Res	Type	Atoms	Z	Observed(°)	Ideal(°)
1	B	604	PRO	CA-N-CD	-5.76	103.44	111.50
1	C	604	PRO	CA-N-CD	-5.62	103.64	111.50
1	A	604	PRO	CA-N-CD	-5.38	103.97	111.50
1	D	604	PRO	CA-N-CD	-5.32	104.05	111.50

There are no chirality outliers.

There are no planarity outliers.

5.2 Too-close contacts

In the following table, the Non-H and H(model) columns list the number of non-hydrogen atoms and hydrogen atoms in the chain respectively. The H(added) column lists the number of hydrogen atoms added and optimized by MolProbity. The Clashes column lists the number of clashes within the asymmetric unit, whereas Symm-Clashes lists symmetry-related clashes.

Mol	Chain	Non-H	H(model)	H(added)	Clashes	Symm-Clashes
1	A	3856	0	3809	125	0
1	B	3856	0	3809	111	0
1	C	3856	0	3809	101	0

Continued on next page...

Continued from previous page...

Mol	Chain	Non-H	H(model)	H(added)	Clashes	Symm-Clashes
1	D	3856	0	3809	119	0
2	A	42	62	60	11	0
2	B	42	62	60	10	0
2	C	42	62	60	11	0
2	D	42	62	60	15	0
3	A	42	0	39	2	0
3	B	42	0	39	2	0
3	C	42	0	39	2	0
3	D	42	0	39	2	0
4	A	1	0	0	0	0
All	All	15761	248	15632	381	0

The all-atom clashscore is defined as the number of clashes found per 1000 atoms (including hydrogen atoms). The all-atom clashscore for this structure is 12.

All (381) close contacts within the same asymmetric unit are listed below, sorted by their clash magnitude.

Atom-1	Atom-2	Interatomic distance (Å)	Clash overlap (Å)
1:C:578:ASN:ND2	1:C:586:LEU:CD2	1.75	1.47
1:D:440:ARG:NH1	2:D:801:PEF:HN2	1.14	1.45
1:D:440:ARG:CZ	2:D:801:PEF:HN2	1.34	1.38
1:A:681:ASN:OD1	1:B:683:THR:CG2	1.71	1.37
1:A:440:ARG:NH2	2:A:801:PEF:HN2	1.19	1.36
1:A:650:GLU:HG3	1:A:654:ARG:NH1	1.09	1.35
1:D:440:ARG:NH1	2:D:801:PEF:N	1.69	1.35
1:A:674:ASN:ND2	1:B:590:MET:CE	1.93	1.32
1:C:578:ASN:HD21	1:C:586:LEU:CD2	1.35	1.30
1:A:674:ASN:HD21	1:B:590:MET:CE	1.41	1.30
1:D:440:ARG:NH2	2:D:801:PEF:N	1.75	1.30
1:B:578:ASN:ND2	1:B:586:LEU:CD2	1.98	1.27
1:D:440:ARG:CZ	2:D:801:PEF:N	1.94	1.27
1:C:440:ARG:NH1	2:C:801:PEF:HN2	1.33	1.25
1:B:578:ASN:CG	1:B:586:LEU:HD22	1.54	1.25
1:C:681:ASN:OD1	1:D:683:THR:HG21	1.17	1.24
1:A:650:GLU:CG	1:A:654:ARG:NH1	2.05	1.19
1:B:681:ASN:OD1	1:C:683:THR:CG2	1.90	1.19
1:B:681:ASN:OD1	1:C:683:THR:HG21	1.04	1.19
1:C:678:ALA:HB2	1:D:589:THR:CG2	1.71	1.19
1:A:674:ASN:ND2	1:B:590:MET:HE1	1.52	1.17
1:C:681:ASN:OD1	1:D:683:THR:CG2	1.95	1.14
1:B:578:ASN:ND2	1:B:586:LEU:HD21	1.59	1.14

Continued on next page...

Continued from previous page...

Atom-1	Atom-2	Interatomic distance (Å)	Clash overlap (Å)
1:D:587:SER:O	1:D:591:SER:OG	1.67	1.12
1:C:578:ASN:HD21	1:C:586:LEU:HD21	1.01	1.11
1:A:678:ALA:HB2	1:B:589:THR:HG22	1.21	1.10
1:B:673:LEU:HD22	1:C:597:LEU:HD21	1.36	1.08
1:C:578:ASN:ND2	1:C:586:LEU:HD23	1.63	1.07
1:A:681:ASN:OD1	1:B:683:THR:HG21	0.90	1.07
1:A:676:PHE:CE1	1:D:673:LEU:HD11	1.91	1.06
1:A:676:PHE:CE1	1:D:673:LEU:CD1	2.42	1.03
1:C:678:ALA:HB2	1:D:589:THR:HG22	1.05	1.02
1:A:454:SER:OG	2:A:801:PEF:H42	1.61	0.99
1:A:650:GLU:CG	1:A:654:ARG:HH11	1.66	0.99
1:C:377:SER:OG	2:C:801:PEF:H181	1.62	0.99
1:A:678:ALA:CB	1:B:589:THR:HG22	1.92	0.98
1:A:588:THR:HG22	1:A:592:ARG:HD2	1.43	0.98
1:C:578:ASN:CG	1:C:586:LEU:CD2	2.31	0.96
1:C:673:LEU:HD22	1:D:597:LEU:HD21	1.45	0.96
1:B:440:ARG:NH2	2:B:801:PEF:HN2	1.63	0.95
1:C:578:ASN:ND2	1:C:586:LEU:HD22	1.80	0.95
1:B:673:LEU:CD2	1:C:597:LEU:HD21	1.96	0.94
1:B:578:ASN:ND2	1:B:586:LEU:HD22	1.68	0.93
1:D:587:SER:C	1:D:591:SER:HG	1.71	0.93
1:C:678:ALA:CB	1:D:589:THR:CG2	2.47	0.92
1:C:678:ALA:CB	1:D:589:THR:HG22	1.97	0.92
1:A:589:THR:HG23	1:D:674:ASN:OD1	1.69	0.92
1:B:583:MET:O	1:B:587:SER:HB3	1.68	0.92
1:D:440:ARG:NH2	2:D:801:PEF:HN2	1.53	0.90
1:A:650:GLU:HG3	1:A:654:ARG:HH12	1.15	0.89
1:A:674:ASN:ND2	1:B:590:MET:HE3	1.86	0.88
1:A:674:ASN:HD21	1:B:590:MET:HE2	1.38	0.88
1:B:440:ARG:HH22	2:B:801:PEF:HN2	1.11	0.87
1:C:294:LYS:HD2	1:C:295:MET:HG3	1.56	0.87
1:D:294:LYS:HD2	1:D:295:MET:HG3	1.56	0.87
1:A:294:LYS:HD2	1:A:295:MET:HG3	1.56	0.87
1:A:676:PHE:HE1	1:D:673:LEU:CD1	1.88	0.86
1:C:578:ASN:CG	1:C:586:LEU:HD22	1.94	0.86
1:C:578:ASN:OD1	1:C:586:LEU:HD22	1.75	0.86
1:B:294:LYS:HD2	1:B:295:MET:HG3	1.56	0.85
1:D:440:ARG:NH2	2:D:801:PEF:HN1	1.68	0.85
1:C:578:ASN:ND2	1:C:586:LEU:HD21	1.66	0.83
1:D:440:ARG:HH12	2:D:801:PEF:C5	1.91	0.82
1:A:589:THR:OG1	1:D:678:ALA:HB2	1.80	0.82

Continued on next page...

Continued from previous page...

Atom-1	Atom-2	Interatomic distance (Å)	Clash overlap (Å)
1:A:583:MET:O	1:A:586:LEU:HD23	1.81	0.80
1:A:440:ARG:NH2	2:A:801:PEF:N	2.03	0.79
1:A:672:LEU:O	1:A:675:MET:HG3	1.80	0.79
1:A:380:TRP:H	2:A:801:PEF:H112	1.48	0.79
1:A:377:SER:OG	2:A:801:PEF:H181	1.82	0.79
1:A:676:PHE:CD1	1:D:673:LEU:HD11	2.18	0.79
1:A:673:LEU:HD22	1:B:597:LEU:HD21	1.65	0.78
1:A:589:THR:OG1	1:D:678:ALA:CB	2.31	0.78
1:A:681:ASN:CG	1:B:683:THR:HG21	1.99	0.78
1:B:578:ASN:HD21	1:B:586:LEU:HD21	1.48	0.78
1:C:672:LEU:O	1:C:675:MET:HG3	1.84	0.78
1:B:676:PHE:CE2	1:B:680:ILE:HD11	2.18	0.77
1:D:583:MET:O	1:D:586:LEU:HD23	1.84	0.77
1:C:673:LEU:CD2	1:D:597:LEU:HD21	2.15	0.77
1:D:600:PHE:O	1:D:675:MET:CE	2.33	0.77
1:C:380:TRP:H	2:C:801:PEF:H112	1.50	0.76
1:C:440:ARG:NH1	2:C:801:PEF:N	2.18	0.76
1:C:578:ASN:HD21	1:C:586:LEU:HD22	1.42	0.76
1:A:681:ASN:CG	1:B:683:THR:CG2	2.54	0.76
1:A:678:ALA:CB	1:B:589:THR:CG2	2.64	0.75
1:D:600:PHE:O	1:D:675:MET:HE1	1.85	0.75
1:C:377:SER:OG	2:C:801:PEF:C18	2.36	0.73
1:B:380:TRP:H	2:B:801:PEF:H112	1.54	0.73
1:A:674:ASN:HD22	1:B:590:MET:CE	2.03	0.71
1:B:681:ASN:CG	1:C:683:THR:HG21	2.08	0.71
1:D:589:THR:HA	1:D:593:CYS:HB2	1.73	0.71
1:A:440:ARG:CZ	2:A:801:PEF:HN2	2.00	0.71
1:B:578:ASN:HD21	1:B:586:LEU:CD2	2.00	0.71
1:C:578:ASN:CG	1:C:586:LEU:HD23	2.02	0.70
1:B:440:ARG:CZ	2:B:801:PEF:HN2	2.05	0.69
1:B:578:ASN:CG	1:B:586:LEU:CD2	2.37	0.68
1:B:672:LEU:O	1:B:675:MET:HG3	1.93	0.67
1:A:311:TYR:O	1:D:417:ARG:NH1	2.28	0.66
1:B:417:ARG:NH1	1:C:311:TYR:O	2.29	0.66
1:D:232:ILE:O	1:D:236:ILE:HG13	1.95	0.66
1:A:528:ARG:NH1	1:A:555:GLN:OE1	2.29	0.65
1:B:676:PHE:CD2	1:B:680:ILE:HD11	2.31	0.65
1:D:528:ARG:NH1	1:D:555:GLN:OE1	2.29	0.65
1:B:528:ARG:NH1	1:B:555:GLN:OE1	2.29	0.65
1:D:587:SER:C	1:D:591:SER:OG	2.29	0.65
1:C:528:ARG:NH1	1:C:555:GLN:OE1	2.29	0.65

Continued on next page...

Continued from previous page...

Atom-1	Atom-2	Interatomic distance (Å)	Clash overlap (Å)
1:A:650:GLU:HG3	1:A:654:ARG:HH11	0.83	0.65
1:C:650:GLU:HG3	1:C:654:ARG:NH2	2.12	0.65
1:C:674:ASN:OD1	1:D:589:THR:HB	1.96	0.64
1:A:417:ARG:NH1	1:B:311:TYR:O	2.31	0.64
1:A:650:GLU:O	1:A:654:ARG:HD3	1.97	0.64
1:B:677:LEU:HD13	1:C:679:ILE:HD13	1.80	0.64
2:C:801:PEF:O5	2:C:801:PEF:H342	1.99	0.63
1:C:417:ARG:NH1	1:D:311:TYR:O	2.31	0.62
1:A:583:MET:O	1:A:586:LEU:CD2	2.48	0.62
1:A:539:LEU:O	1:A:542:GLN:NE2	2.33	0.62
1:A:588:THR:CG2	1:A:592:ARG:HH11	2.13	0.62
1:A:578:ASN:ND2	1:A:586:LEU:HD11	2.15	0.61
1:B:238:THR:HG21	1:B:566:VAL:HG11	1.82	0.61
1:D:588:THR:O	1:D:593:CYS:N	2.32	0.61
1:C:238:THR:HG21	1:C:566:VAL:HG11	1.83	0.61
1:D:539:LEU:O	1:D:542:GLN:NE2	2.34	0.61
1:B:591:SER:OG	1:B:592:ARG:N	2.34	0.60
1:B:502:TYR:CZ	1:B:508:ASN:HB3	2.36	0.60
1:D:586:LEU:CD2	1:D:586:LEU:H	2.15	0.60
1:A:583:MET:HA	1:A:586:LEU:HD21	1.84	0.60
1:A:227:TYR:OH	1:A:569:VAL:O	2.20	0.60
1:B:676:PHE:HE2	1:B:680:ILE:HD11	1.64	0.60
1:A:589:THR:CG2	1:D:674:ASN:OD1	2.48	0.60
1:C:440:ARG:HH12	2:C:801:PEF:HN2	0.67	0.60
1:B:678:ALA:HB2	1:C:589:THR:CG2	2.32	0.59
1:D:586:LEU:HD23	1:D:586:LEU:H	1.67	0.59
1:A:398:THR:OG1	1:A:401:GLU:OE1	2.19	0.59
1:B:681:ASN:CG	1:C:683:THR:CG2	2.68	0.59
1:D:238:THR:HG21	1:D:566:VAL:HG11	1.84	0.59
1:D:587:SER:O	1:D:591:SER:CB	2.50	0.59
1:A:238:THR:HG21	1:A:566:VAL:HG11	1.83	0.59
1:C:468:THR:HA	1:C:471:PHE:HD2	1.67	0.59
1:D:380:TRP:H	2:D:801:PEF:H121	1.68	0.59
1:A:651:GLU:OE1	1:A:654:ARG:NH2	2.36	0.58
1:A:586:LEU:CD2	1:A:586:LEU:H	2.16	0.58
1:A:578:ASN:ND2	1:A:586:LEU:CD1	2.67	0.58
1:C:398:THR:OG1	1:C:401:GLU:OE1	2.19	0.58
1:A:673:LEU:CD2	1:B:597:LEU:HD21	2.33	0.58
1:C:539:LEU:O	1:C:542:GLN:NE2	2.37	0.58
2:D:801:PEF:H132	2:D:801:PEF:H312	1.86	0.58
1:D:621:THR:HG23	1:D:622:GLN:HG2	1.86	0.57

Continued on next page...

Continued from previous page...

Atom-1	Atom-2	Interatomic distance (Å)	Clash overlap (Å)
1:B:578:ASN:OD1	1:B:586:LEU:HD22	2.01	0.57
1:D:398:THR:OG1	1:D:401:GLU:OE1	2.19	0.57
1:B:440:ARG:NH1	2:B:801:PEF:HN2	2.02	0.57
1:A:621:THR:HG23	1:A:622:GLN:HG2	1.87	0.57
1:B:578:ASN:OD1	1:B:586:LEU:HD13	2.05	0.56
1:B:621:THR:HG23	1:B:622:GLN:HG2	1.87	0.56
1:D:583:MET:O	1:D:586:LEU:CD2	2.51	0.56
1:A:676:PHE:CE2	1:A:680:ILE:HD11	2.41	0.56
1:D:578:ASN:ND2	1:D:586:LEU:HD11	2.21	0.56
1:B:539:LEU:O	1:B:542:GLN:NE2	2.38	0.56
1:A:468:THR:HA	1:A:471:PHE:HD2	1.71	0.56
1:B:603:MET:HB3	1:B:604:PRO:HD2	1.88	0.56
1:D:583:MET:HA	1:D:586:LEU:HD21	1.87	0.56
1:C:621:THR:HG23	1:C:622:GLN:HG2	1.88	0.56
1:A:681:ASN:OD1	1:B:683:THR:HG23	1.93	0.55
1:A:436:PHE:HB2	1:A:460:LEU:HB2	1.88	0.55
1:B:398:THR:OG1	1:B:401:GLU:OE1	2.19	0.55
1:D:468:THR:HA	1:D:471:PHE:HD2	1.72	0.55
1:C:603:MET:HB3	1:C:604:PRO:HD2	1.89	0.55
1:C:673:LEU:HD21	1:D:597:LEU:HD11	1.89	0.55
1:B:588:THR:HG22	1:B:592:ARG:NH1	2.21	0.54
1:D:578:ASN:ND2	1:D:586:LEU:CD1	2.70	0.54
1:A:588:THR:HG21	1:D:681:ASN:OD1	2.08	0.54
1:C:650:GLU:HG3	1:C:654:ARG:HH21	1.71	0.54
2:C:801:PEF:H51	2:C:801:PEF:O1P	2.06	0.54
1:A:681:ASN:CG	1:B:683:THR:HG23	2.27	0.54
1:D:587:SER:O	1:D:591:SER:N	2.40	0.54
1:A:677:LEU:HD13	1:B:679:ILE:HD13	1.90	0.53
1:D:440:ARG:CZ	2:D:801:PEF:HN1	2.05	0.53
2:D:801:PEF:H132	2:D:801:PEF:O4	2.08	0.53
1:A:674:ASN:HD22	1:B:590:MET:HE3	1.66	0.53
1:C:496:ARG:HG2	1:C:497:ILE:H	1.74	0.53
1:C:440:ARG:NH2	2:C:801:PEF:O4	2.42	0.53
1:C:678:ALA:CB	1:D:589:THR:HG21	2.38	0.53
1:D:309:ILE:HB	1:D:313:ASN:HB2	1.91	0.52
1:B:686:GLU:O	1:B:686:GLU:HG3	2.09	0.52
1:D:588:THR:HG22	1:D:592:ARG:HD2	1.92	0.52
1:D:600:PHE:HZ	1:D:679:ILE:HG12	1.74	0.52
1:A:586:LEU:HD23	1:A:586:LEU:H	1.75	0.52
1:B:440:ARG:NH2	2:B:801:PEF:N	2.39	0.52
1:B:454:SER:HB3	2:B:801:PEF:H42	1.91	0.52

Continued on next page...

Continued from previous page...

Atom-1	Atom-2	Interatomic distance (Å)	Clash overlap (Å)
1:B:496:ARG:HG2	1:B:497:ILE:H	1.75	0.52
1:D:502:TYR:CZ	1:D:508:ASN:HB3	2.45	0.52
1:D:568:PHE:HD1	1:D:571:ILE:HD11	1.75	0.52
1:B:309:ILE:HB	1:B:313:ASN:HB2	1.91	0.52
1:A:496:ARG:HG2	1:A:497:ILE:H	1.74	0.52
1:C:319:PRO:HG2	1:C:395:LEU:HD12	1.92	0.52
1:D:496:ARG:HG2	1:D:497:ILE:H	1.74	0.52
1:D:603:MET:HB3	1:D:604:PRO:HD2	1.91	0.52
1:D:436:PHE:HB2	1:D:460:LEU:HB2	1.92	0.51
1:C:502:TYR:CZ	1:C:508:ASN:HB3	2.45	0.51
1:A:603:MET:HB3	1:A:604:PRO:HD2	1.91	0.51
1:A:678:ALA:HB2	1:B:589:THR:CG2	2.12	0.51
1:B:319:PRO:HG2	1:B:395:LEU:HD12	1.92	0.51
1:C:590:MET:HA	1:C:594:ALA:HB3	1.92	0.51
1:A:440:ARG:HH22	2:A:801:PEF:HN2	0.56	0.51
1:D:456:GLN:O	1:D:456:GLN:HG3	2.11	0.51
1:D:600:PHE:CZ	1:D:679:ILE:HG12	2.46	0.51
1:B:436:PHE:HB2	1:B:460:LEU:HB2	1.93	0.51
1:C:448:THR:HB	1:D:249:TYR:HD1	1.75	0.51
1:A:227:TYR:HE2	1:A:573:LEU:HD12	1.75	0.51
1:C:436:PHE:HB2	1:C:460:LEU:HB2	1.94	0.50
1:C:583:MET:O	1:C:587:SER:HB3	2.11	0.50
1:C:607:ILE:HD13	1:C:671:ILE:HD12	1.93	0.50
1:D:600:PHE:CZ	1:D:679:ILE:CG1	2.94	0.50
1:A:589:THR:OG1	1:D:678:ALA:HB1	2.09	0.50
1:A:448:THR:HB	1:B:249:TYR:HD1	1.76	0.50
1:A:586:LEU:HA	1:A:589:THR:HB	1.93	0.49
1:A:249:TYR:HD1	1:D:448:THR:HB	1.77	0.49
1:A:650:GLU:CG	1:A:654:ARG:HH12	1.92	0.49
1:C:460:LEU:HD23	1:C:555:GLN:HG3	1.94	0.49
1:D:600:PHE:HZ	1:D:679:ILE:CG1	2.25	0.49
1:A:624:ASP:HB3	1:B:247:TYR:CZ	2.48	0.49
1:B:448:THR:HB	1:C:249:TYR:HD1	1.77	0.49
1:A:588:THR:HG23	1:A:592:ARG:HH11	1.76	0.49
1:D:460:LEU:HD23	1:D:555:GLN:HG3	1.95	0.49
1:B:412:ASN:OD1	3:B:803:NAG:O4	2.30	0.49
1:A:454:SER:HG	2:A:801:PEF:H42	1.70	0.49
1:A:607:ILE:HD13	1:A:671:ILE:HD12	1.93	0.49
1:B:460:LEU:HD23	1:B:555:GLN:HG3	1.94	0.49
1:B:568:PHE:HD1	1:B:571:ILE:HD11	1.78	0.49
1:C:568:PHE:HD1	1:C:571:ILE:HD11	1.78	0.49

Continued on next page...

Continued from previous page...

Atom-1	Atom-2	Interatomic distance (Å)	Clash overlap (Å)
1:D:379:HIS:HD2	2:D:801:PEF:H122	1.78	0.49
1:A:412:ASN:OD1	3:A:803:NAG:O4	2.30	0.48
1:B:677:LEU:CD1	1:C:679:ILE:HD13	2.43	0.48
1:B:320:ARG:HH22	3:B:804:NAG:H81	1.79	0.48
1:C:325:ARG:NH2	1:C:416:ASP:OD1	2.47	0.48
2:C:801:PEF:H52	2:C:801:PEF:O3P	2.13	0.48
1:A:460:LEU:HD23	1:A:555:GLN:HG3	1.96	0.48
1:A:600:PHE:CD1	1:B:585:GLN:HG2	2.48	0.48
1:B:440:ARG:HH22	2:B:801:PEF:C5	2.27	0.48
1:D:319:PRO:HG2	1:D:395:LEU:HD12	1.96	0.48
1:D:607:ILE:HD13	1:D:671:ILE:HD12	1.96	0.48
2:A:801:PEF:H52	2:A:801:PEF:O3P	2.14	0.48
1:B:607:ILE:HD13	1:B:671:ILE:HD12	1.96	0.48
1:B:440:ARG:HH12	2:B:801:PEF:HN2	1.63	0.47
1:A:568:PHE:HD1	1:A:571:ILE:HD11	1.79	0.47
1:B:415:LEU:HD22	1:B:419:THR:HG21	1.97	0.47
1:A:312:GLU:O	1:A:430:ASN:ND2	2.44	0.47
1:A:676:PHE:HE2	1:A:680:ILE:HD11	1.78	0.47
1:B:475:ALA:O	1:B:479:ILE:HG12	2.14	0.47
1:A:319:PRO:HG2	1:A:395:LEU:HD12	1.97	0.47
1:D:227:TYR:HD2	1:D:228:LEU:HD22	1.80	0.47
1:A:309:ILE:HB	1:A:313:ASN:HB2	1.97	0.47
1:B:505:SER:OG	1:B:508:ASN:ND2	2.45	0.46
1:B:678:ALA:HB2	1:C:589:THR:HG22	1.96	0.46
1:A:240:GLY:HA3	1:A:473:LEU:HD21	1.97	0.46
1:B:678:ALA:HB2	1:C:589:THR:HG23	1.97	0.46
1:A:583:MET:HA	1:A:586:LEU:CD2	2.45	0.46
1:D:429:TYR:OH	1:D:434:ASN:OD1	2.29	0.46
1:D:676:PHE:CE2	1:D:680:ILE:HD11	2.51	0.46
1:C:454:SER:HB3	2:C:801:PEF:H42	1.98	0.46
1:A:679:ILE:HG21	1:D:677:LEU:HD13	1.97	0.45
1:A:588:THR:HG22	1:A:592:ARG:HH11	1.80	0.45
1:C:395:LEU:HB3	1:C:402:THR:HG23	1.98	0.45
1:D:412:ASN:OD1	3:D:803:NAG:O4	2.31	0.45
1:A:681:ASN:ND2	1:B:683:THR:HG23	2.31	0.45
1:B:215:LYS:HB2	1:B:216:TYR:H	1.48	0.45
1:B:473:LEU:HA	1:B:476:CYS:SG	2.57	0.45
1:B:588:THR:HG22	1:B:592:ARG:HH12	1.82	0.45
1:C:309:ILE:HB	1:C:313:ASN:HB2	1.98	0.45
2:B:801:PEF:H52	2:B:801:PEF:O3P	2.17	0.45
1:D:507:TRP:CH2	1:D:574:PHE:HB2	2.52	0.45

Continued on next page...

Continued from previous page...

Atom-1	Atom-2	Interatomic distance (Å)	Clash overlap (Å)
1:A:273:LEU:HB2	1:A:453:PRO:HG3	1.99	0.45
1:A:588:THR:HG23	1:A:592:ARG:NH1	2.32	0.45
1:C:677:LEU:HD13	1:D:679:ILE:HG21	1.99	0.45
1:D:240:GLY:HA3	1:D:473:LEU:HD21	1.99	0.45
1:C:227:TYR:HE2	1:C:573:LEU:HD12	1.82	0.45
2:D:801:PEF:H312	2:D:801:PEF:O4	2.17	0.45
1:A:395:LEU:HB3	1:A:402:THR:HG23	1.98	0.44
1:D:568:PHE:HA	1:D:571:ILE:HG12	1.99	0.44
1:D:600:PHE:CE2	1:D:675:MET:HG3	2.52	0.44
1:C:507:TRP:CH2	1:C:574:PHE:HB2	2.52	0.44
1:C:475:ALA:HA	1:C:478:ILE:HG12	2.00	0.44
1:C:320:ARG:HH22	3:C:804:NAG:H81	1.83	0.44
1:D:681:ASN:ND2	1:D:681:ASN:O	2.49	0.44
1:A:309:ILE:O	1:A:313:ASN:ND2	2.46	0.44
1:A:432:ASN:HA	1:D:344:CYS:SG	2.58	0.44
1:B:600:PHE:CD1	1:C:585:GLN:HG2	2.53	0.44
1:D:475:ALA:HA	1:D:478:ILE:HG12	1.99	0.44
1:D:440:ARG:HH22	2:D:801:PEF:HN1	1.33	0.44
1:A:415:LEU:HD22	1:A:419:THR:HG21	1.99	0.44
1:B:344:CYS:SG	1:C:432:ASN:HA	2.57	0.44
1:D:600:PHE:CZ	1:D:679:ILE:HG13	2.53	0.44
1:B:240:GLY:HA3	1:B:473:LEU:HD21	2.00	0.44
1:D:395:LEU:HB3	1:D:402:THR:HG23	1.99	0.44
1:D:224:LEU:O	1:D:228:LEU:HD23	2.17	0.44
1:A:344:CYS:SG	1:B:432:ASN:HA	2.58	0.43
1:B:395:LEU:HB3	1:B:402:THR:HG23	1.98	0.43
1:B:341:ILE:HD13	1:C:431:ALA:HB2	2.00	0.43
1:C:344:CYS:SG	1:D:432:ASN:HA	2.58	0.43
1:C:412:ASN:OD1	3:C:803:NAG:O4	2.31	0.43
1:C:415:LEU:HD22	1:C:419:THR:HG21	2.00	0.43
1:A:273:LEU:HD22	1:A:278:ASP:HB3	2.00	0.43
1:A:431:ALA:HB2	1:D:341:ILE:HD13	2.00	0.43
1:B:468:THR:HA	1:B:471:PHE:HD2	1.82	0.43
1:D:273:LEU:HD22	1:D:278:ASP:HB3	2.01	0.43
1:D:320:ARG:HH22	3:D:804:NAG:H81	1.83	0.43
1:D:415:LEU:HD22	1:D:419:THR:HG21	1.99	0.43
1:A:341:ILE:HD13	1:B:431:ALA:HB2	2.01	0.43
1:B:429:TYR:OH	1:B:434:ASN:OD1	2.27	0.43
1:C:568:PHE:HA	1:C:571:ILE:HG12	2.01	0.43
1:D:227:TYR:HE2	1:D:573:LEU:HD12	1.82	0.43
1:D:583:MET:HA	1:D:586:LEU:CD2	2.47	0.43

Continued on next page...

Continued from previous page...

Atom-1	Atom-2	Interatomic distance (Å)	Clash overlap (Å)
1:A:507:TRP:CH2	1:A:574:PHE:HB2	2.54	0.43
1:A:475:ALA:HA	1:A:478:ILE:HG12	2.00	0.43
1:A:582:THR:O	1:A:586:LEU:HD22	2.19	0.43
1:C:673:LEU:HD22	1:D:597:LEU:CD2	2.32	0.43
1:D:551:LEU:O	1:D:555:GLN:HG2	2.19	0.43
1:A:485:PHE:HA	1:A:488:VAL:HG12	2.01	0.43
1:B:507:TRP:HH2	1:B:574:PHE:HB2	1.82	0.43
1:D:619:PHE:HZ	1:D:657:GLY:HA2	1.84	0.43
1:B:583:MET:O	1:B:587:SER:CB	2.55	0.42
1:C:602:ILE:HA	1:C:605:PHE:HB3	2.01	0.42
1:D:507:TRP:HH2	1:D:574:PHE:HB2	1.84	0.42
1:A:479:ILE:HA	1:A:482:PHE:HD2	1.83	0.42
1:A:643:ASP:HB2	1:D:644:ILE:HD12	2.01	0.42
1:B:568:PHE:HA	1:B:571:ILE:HG12	2.01	0.42
1:A:215:LYS:HB2	1:A:216:TYR:H	1.49	0.42
1:B:273:LEU:HD22	1:B:278:ASP:HB3	2.01	0.42
1:C:341:ILE:HD13	1:D:431:ALA:HB2	2.00	0.42
1:A:316:LEU:HD22	1:A:538:PHE:HE2	1.83	0.42
1:D:582:THR:O	1:D:586:LEU:HD22	2.19	0.42
1:B:485:PHE:HA	1:B:488:VAL:HG12	2.00	0.42
1:B:551:LEU:O	1:B:555:GLN:HG2	2.20	0.42
1:B:676:PHE:CD2	1:B:680:ILE:CD1	3.02	0.42
1:C:215:LYS:HB2	1:C:216:TYR:H	1.49	0.42
1:C:375:ASN:O	1:C:547:ASN:ND2	2.52	0.42
1:A:551:LEU:O	1:A:555:GLN:HG2	2.20	0.42
1:B:304:ASP:OD1	1:B:304:ASP:N	2.53	0.42
1:C:240:GLY:HA3	1:C:473:LEU:HD21	2.01	0.42
1:C:551:LEU:O	1:C:555:GLN:HG2	2.20	0.42
1:A:568:PHE:HA	1:A:571:ILE:HG12	2.01	0.41
1:B:507:TRP:CH2	1:B:574:PHE:HB2	2.55	0.41
1:C:273:LEU:HD22	1:C:278:ASP:HB3	2.02	0.41
1:C:485:PHE:HA	1:C:488:VAL:HG12	2.02	0.41
1:D:601:ALA:HB2	1:D:675:MET:HE1	2.01	0.41
1:C:304:ASP:N	1:C:304:ASP:OD1	2.53	0.41
1:C:670:PHE:CE1	1:D:597:LEU:HD22	2.55	0.41
1:C:661:PHE:O	1:C:665:VAL:HG23	2.20	0.41
1:D:653:ASN:ND2	1:D:656:LEU:HB2	2.35	0.41
1:A:304:ASP:OD1	1:A:304:ASP:N	2.53	0.41
1:A:600:PHE:HZ	1:A:679:ILE:CG1	2.34	0.41
1:B:602:ILE:HA	1:B:605:PHE:HB3	2.01	0.41
1:C:589:THR:O	1:C:594:ALA:N	2.53	0.41

Continued on next page...

Continued from previous page...

Atom-1	Atom-2	Interatomic distance (Å)	Clash overlap (Å)
1:C:619:PHE:HZ	1:C:657:GLY:HA2	1.86	0.41
1:D:681:ASN:ND2	1:D:681:ASN:C	2.73	0.41
1:A:619:PHE:HZ	1:A:657:GLY:HA2	1.85	0.41
1:B:624:ASP:HB3	1:C:247:TYR:OH	2.21	0.41
1:C:507:TRP:HH2	1:C:574:PHE:HB2	1.84	0.41
1:D:304:ASP:OD1	1:D:304:ASP:N	2.54	0.41
1:D:487:TYR:HA	1:D:490:GLU:HG2	2.03	0.41
1:A:512:VAL:HA	1:A:515:VAL:HG22	2.03	0.41
1:A:661:PHE:O	1:A:665:VAL:HG23	2.20	0.41
1:A:677:LEU:CD1	1:B:679:ILE:HD13	2.49	0.41
1:C:624:ASP:HB3	1:D:247:TYR:OH	2.21	0.41
1:A:653:ASN:ND2	1:A:656:LEU:HB2	2.36	0.41
1:B:653:ASN:ND2	1:B:656:LEU:HB2	2.35	0.41
1:D:215:LYS:HB2	1:D:216:TYR:H	1.49	0.41
1:D:661:PHE:O	1:D:665:VAL:HG23	2.20	0.41
1:A:649:ILE:HD12	1:A:649:ILE:H	1.86	0.41
1:D:485:PHE:HA	1:D:488:VAL:HG12	2.02	0.41
1:A:380:TRP:HB3	2:A:801:PEF:H111	2.03	0.40
1:A:416:ASP:OD1	1:A:416:ASP:N	2.54	0.40
1:C:645:ASN:O	1:C:648:GLU:HG2	2.21	0.40
1:D:649:ILE:H	1:D:649:ILE:HD12	1.86	0.40
1:A:237:LEU:HD11	1:A:477:GLU:HA	2.03	0.40
1:A:380:TRP:HB3	2:A:801:PEF:C11	2.51	0.40
1:A:247:TYR:OH	1:D:624:ASP:HB3	2.21	0.40
1:A:586:LEU:HD23	1:A:586:LEU:N	2.34	0.40
1:B:673:LEU:HD21	1:C:597:LEU:HD21	1.94	0.40
1:C:641:LEU:HD23	1:C:641:LEU:HA	1.92	0.40
1:C:644:ILE:HD12	1:D:643:ASP:HB2	2.03	0.40
1:A:320:ARG:HH22	3:A:804:NAG:H81	1.85	0.40
1:B:258:LEU:HD11	1:B:457:PHE:HE1	1.87	0.40

There are no symmetry-related clashes.

5.3 Torsion angles ⓘ

5.3.1 Protein backbone ⓘ

In the following table, the Percentiles column shows the percent Ramachandran outliers of the chain as a percentile score with respect to all PDB entries followed by that with respect to all EM entries.

The Analysed column shows the number of residues for which the backbone conformation was analysed, and the total number of residues.

Mol	Chain	Analysed	Favoured	Allowed	Outliers	Percentiles	
1	A	462/571 (81%)	434 (94%)	27 (6%)	1 (0%)	47	82
1	B	462/571 (81%)	428 (93%)	33 (7%)	1 (0%)	47	82
1	C	462/571 (81%)	432 (94%)	29 (6%)	1 (0%)	47	82
1	D	462/571 (81%)	434 (94%)	27 (6%)	1 (0%)	47	82
All	All	1848/2284 (81%)	1728 (94%)	116 (6%)	4 (0%)	50	82

All (4) Ramachandran outliers are listed below:

Mol	Chain	Res	Type
1	C	587	SER
1	A	629	PHE
1	B	629	PHE
1	D	629	PHE

5.3.2 Protein sidechains ⓘ

In the following table, the Percentiles column shows the percent sidechain outliers of the chain as a percentile score with respect to all PDB entries followed by that with respect to all EM entries.

The Analysed column shows the number of residues for which the sidechain conformation was analysed, and the total number of residues.

Mol	Chain	Analysed	Rotameric	Outliers	Percentiles	
1	A	422/504 (84%)	418 (99%)	4 (1%)	78	92
1	B	422/504 (84%)	420 (100%)	2 (0%)	88	96
1	C	422/504 (84%)	418 (99%)	4 (1%)	78	92
1	D	422/504 (84%)	420 (100%)	2 (0%)	88	96
All	All	1688/2016 (84%)	1676 (99%)	12 (1%)	84	94

All (12) residues with a non-rotameric sidechain are listed below:

Mol	Chain	Res	Type
1	A	586	LEU
1	A	587	SER
1	A	684	TYR
1	A	685	SER

Continued on next page...

Continued from previous page...

Mol	Chain	Res	Type
1	B	586	LEU
1	B	684	TYR
1	C	589	THR
1	C	653	ASN
1	C	676	PHE
1	C	684	TYR
1	D	586	LEU
1	D	684	TYR

Sometimes sidechains can be flipped to improve hydrogen bonding and reduce clashes. All (5) such sidechains are listed below:

Mol	Chain	Res	Type
1	A	674	ASN
1	C	305	ASN
1	C	550	HIS
1	C	578	ASN
1	D	379	HIS

5.3.3 RNA [i](#)

There are no RNA molecules in this entry.

5.4 Non-standard residues in protein, DNA, RNA chains [i](#)

There are no non-standard protein/DNA/RNA residues in this entry.

5.5 Carbohydrates [i](#)

There are no monosaccharides in this entry.

5.6 Ligand geometry [i](#)

Of 17 ligands modelled in this entry, 1 is monoatomic - leaving 16 for Mogul analysis.

In the following table, the Counts columns list the number of bonds (or angles) for which Mogul statistics could be retrieved, the number of bonds (or angles) that are observed in the model and the number of bonds (or angles) that are defined in the Chemical Component Dictionary. The Link column lists molecule types, if any, to which the group is linked. The Z score for a bond length (or angle) is the number of standard deviations the observed value is removed from the

expected value. A bond length (or angle) with $|Z| > 2$ is considered an outlier worth inspection. RMSZ is the root-mean-square of all Z scores of the bond lengths (or angles).

Mol	Type	Chain	Res	Link	Bond lengths			Bond angles		
					Counts	RMSZ	$\# Z > 2$	Counts	RMSZ	$\# Z > 2$
2	PEF	C	801	-	41,41,46	0.94	4 (9%)	44,46,51	0.91	2 (4%)
3	NAG	B	802	1	14,14,15	0.21	0	17,19,21	0.45	0
3	NAG	D	802	1	14,14,15	0.22	0	17,19,21	0.45	0
3	NAG	B	803	1	14,14,15	0.23	0	17,19,21	0.44	0
2	PEF	A	801	-	41,41,46	0.95	4 (9%)	44,46,51	0.92	2 (4%)
2	PEF	B	801	-	41,41,46	0.95	4 (9%)	44,46,51	0.91	2 (4%)
3	NAG	C	802	1	14,14,15	0.22	0	17,19,21	0.45	0
3	NAG	A	804	1	14,14,15	0.22	0	17,19,21	0.45	0
3	NAG	B	804	1	14,14,15	0.21	0	17,19,21	0.45	0
3	NAG	A	802	1	14,14,15	0.23	0	17,19,21	0.45	0
3	NAG	A	803	1	14,14,15	0.21	0	17,19,21	0.43	0
3	NAG	C	804	1	14,14,15	0.23	0	17,19,21	0.45	0
2	PEF	D	801	-	41,41,46	0.94	4 (9%)	44,46,51	0.96	2 (4%)
3	NAG	D	803	1	14,14,15	0.22	0	17,19,21	0.44	0
3	NAG	D	804	1	14,14,15	0.23	0	17,19,21	0.45	0
3	NAG	C	803	1	14,14,15	0.22	0	17,19,21	0.44	0

In the following table, the Chirals column lists the number of chiral outliers, the number of chiral centers analysed, the number of these observed in the model and the number defined in the Chemical Component Dictionary. Similar counts are reported in the Torsion and Rings columns. '-' means no outliers of that kind were identified.

Mol	Type	Chain	Res	Link	Chirals	Torsions	Rings
2	PEF	C	801	-	-	17/45/45/50	-
3	NAG	B	802	1	-	2/6/23/26	0/1/1/1
3	NAG	D	802	1	-	2/6/23/26	0/1/1/1
3	NAG	B	803	1	-	2/6/23/26	0/1/1/1
2	PEF	A	801	-	-	21/45/45/50	-
2	PEF	B	801	-	-	21/45/45/50	-
3	NAG	C	802	1	-	2/6/23/26	0/1/1/1
3	NAG	A	804	1	-	4/6/23/26	0/1/1/1
3	NAG	B	804	1	-	4/6/23/26	0/1/1/1
3	NAG	A	802	1	-	2/6/23/26	0/1/1/1
3	NAG	A	803	1	-	2/6/23/26	0/1/1/1
3	NAG	C	804	1	-	4/6/23/26	0/1/1/1
2	PEF	D	801	-	-	23/45/45/50	-

Continued on next page...

Continued from previous page...

Mol	Type	Chain	Res	Link	Chirals	Torsions	Rings
3	NAG	D	803	1	-	2/6/23/26	0/1/1/1
3	NAG	D	804	1	-	4/6/23/26	0/1/1/1
3	NAG	C	803	1	-	2/6/23/26	0/1/1/1

All (16) bond length outliers are listed below:

Mol	Chain	Res	Type	Atoms	Z	Observed(Å)	Ideal(Å)
2	A	801	PEF	O2-C2	-2.53	1.40	1.46
2	C	801	PEF	O2-C2	-2.52	1.40	1.46
2	B	801	PEF	O2-C2	-2.51	1.40	1.46
2	D	801	PEF	O2-C2	-2.42	1.40	1.46
2	B	801	PEF	O3-C30	2.38	1.40	1.33
2	A	801	PEF	O3-C30	2.37	1.40	1.33
2	D	801	PEF	O3-C30	2.36	1.40	1.33
2	C	801	PEF	O3-C30	2.31	1.40	1.33
2	D	801	PEF	O3-C3	-2.16	1.40	1.45
2	A	801	PEF	O2-C10	2.13	1.40	1.34
2	D	801	PEF	O2-C10	2.12	1.40	1.34
2	C	801	PEF	O2-C10	2.12	1.40	1.34
2	B	801	PEF	O2-C10	2.10	1.40	1.34
2	B	801	PEF	O3-C3	-2.08	1.40	1.45
2	A	801	PEF	O3-C3	-2.08	1.40	1.45
2	C	801	PEF	O3-C3	-2.07	1.40	1.45

All (8) bond angle outliers are listed below:

Mol	Chain	Res	Type	Atoms	Z	Observed(°)	Ideal(°)
2	D	801	PEF	O2-C10-C11	4.28	120.73	111.50
2	A	801	PEF	O2-C10-C11	4.11	120.36	111.50
2	B	801	PEF	O2-C10-C11	4.07	120.28	111.50
2	C	801	PEF	O2-C10-C11	4.02	120.17	111.50
2	D	801	PEF	O3-C30-C31	2.72	120.45	111.91
2	B	801	PEF	O3-C30-C31	2.65	120.23	111.91
2	C	801	PEF	O3-C30-C31	2.61	120.08	111.91
2	A	801	PEF	O3-C30-C31	2.61	120.08	111.91

There are no chirality outliers.

All (114) torsion outliers are listed below:

Mol	Chain	Res	Type	Atoms
2	A	801	PEF	C5-C4-O4P-P

Continued on next page...

Continued from previous page...

Mol	Chain	Res	Type	Atoms
2	A	801	PEF	C1-O3P-P-O1P
2	A	801	PEF	C1-O3P-P-O2P
2	B	801	PEF	O4P-C4-C5-N
2	B	801	PEF	C5-C4-O4P-P
2	B	801	PEF	C1-O3P-P-O2P
2	C	801	PEF	C5-C4-O4P-P
2	C	801	PEF	C11-C10-O2-C2
2	C	801	PEF	C1-O3P-P-O1P
2	C	801	PEF	C1-O3P-P-O2P
2	B	801	PEF	O4-C10-O2-C2
2	C	801	PEF	O4-C10-O2-C2
2	D	801	PEF	O4-C10-O2-C2
2	D	801	PEF	C31-C30-O3-C3
2	D	801	PEF	C11-C10-O2-C2
3	D	804	NAG	C4-C5-C6-O6
3	A	804	NAG	C4-C5-C6-O6
3	C	804	NAG	C4-C5-C6-O6
3	B	804	NAG	C4-C5-C6-O6
2	D	801	PEF	O5-C30-O3-C3
2	A	801	PEF	C11-C10-O2-C2
2	B	801	PEF	C11-C10-O2-C2
3	B	802	NAG	O5-C5-C6-O6
3	D	802	NAG	O5-C5-C6-O6
3	A	802	NAG	O5-C5-C6-O6
3	C	802	NAG	O5-C5-C6-O6
3	A	804	NAG	O5-C5-C6-O6
3	D	804	NAG	O5-C5-C6-O6
2	A	801	PEF	O4-C10-O2-C2
3	C	804	NAG	O5-C5-C6-O6
3	B	804	NAG	O5-C5-C6-O6
2	C	801	PEF	C31-C30-O3-C3
2	C	801	PEF	O5-C30-O3-C3
2	A	801	PEF	C31-C30-O3-C3
2	B	801	PEF	C31-C30-O3-C3
3	A	804	NAG	C8-C7-N2-C2
3	A	804	NAG	O7-C7-N2-C2
3	B	804	NAG	C8-C7-N2-C2
3	B	804	NAG	O7-C7-N2-C2
3	C	804	NAG	C8-C7-N2-C2
3	C	804	NAG	O7-C7-N2-C2
3	D	804	NAG	C8-C7-N2-C2
3	D	804	NAG	O7-C7-N2-C2

Continued on next page...

Continued from previous page...

Mol	Chain	Res	Type	Atoms
2	D	801	PEF	C15-C16-C17-C18
3	A	803	NAG	O5-C5-C6-O6
3	B	803	NAG	O5-C5-C6-O6
3	D	803	NAG	O5-C5-C6-O6
2	A	801	PEF	O5-C30-O3-C3
2	B	801	PEF	O5-C30-O3-C3
3	C	803	NAG	O5-C5-C6-O6
2	C	801	PEF	C1-O3P-P-O4P
2	D	801	PEF	C4-O4P-P-O3P
2	A	801	PEF	C13-C14-C15-C16
2	B	801	PEF	C13-C14-C15-C16
2	C	801	PEF	C11-C12-C13-C14
2	C	801	PEF	C37-C38-C39-C40
2	D	801	PEF	C36-C37-C38-C39
2	B	801	PEF	C11-C12-C13-C14
2	A	801	PEF	C11-C12-C13-C14
2	B	801	PEF	C40-C41-C42-C43
2	A	801	PEF	C36-C37-C38-C39
2	D	801	PEF	C12-C13-C14-C15
2	D	801	PEF	C39-C40-C41-C42
2	A	801	PEF	C33-C34-C35-C36
2	A	801	PEF	C34-C35-C36-C37
2	C	801	PEF	C16-C17-C18-C19
2	C	801	PEF	C36-C37-C38-C39
2	A	801	PEF	C15-C16-C17-C18
2	D	801	PEF	C40-C41-C42-C43
2	B	801	PEF	C15-C16-C17-C18
2	A	801	PEF	C31-C32-C33-C34
2	B	801	PEF	C37-C38-C39-C40
2	B	801	PEF	C31-C32-C33-C34
2	B	801	PEF	C36-C37-C38-C39
2	A	801	PEF	C1-O3P-P-O4P
2	B	801	PEF	C1-O3P-P-O4P
2	C	801	PEF	C40-C41-C42-C43
2	D	801	PEF	C32-C33-C34-C35
2	C	801	PEF	C31-C32-C33-C34
2	B	801	PEF	C30-C31-C32-C33
3	A	803	NAG	C4-C5-C6-O6
3	D	803	NAG	C4-C5-C6-O6
2	C	801	PEF	C42-C43-C44-C45
2	D	801	PEF	C42-C43-C44-C45
3	D	802	NAG	C4-C5-C6-O6

Continued on next page...

Continued from previous page...

Mol	Chain	Res	Type	Atoms
3	B	803	NAG	C4-C5-C6-O6
2	B	801	PEF	C14-C15-C16-C17
2	A	801	PEF	C42-C43-C44-C45
2	D	801	PEF	C13-C14-C15-C16
3	B	802	NAG	C4-C5-C6-O6
2	B	801	PEF	C42-C43-C44-C45
2	A	801	PEF	C30-C31-C32-C33
2	A	801	PEF	C14-C15-C16-C17
3	A	802	NAG	C4-C5-C6-O6
2	D	801	PEF	C1-C2-C3-O3
2	D	801	PEF	C11-C12-C13-C14
3	C	802	NAG	C4-C5-C6-O6
2	B	801	PEF	C41-C42-C43-C44
2	C	801	PEF	C41-C42-C43-C44
3	C	803	NAG	C4-C5-C6-O6
2	A	801	PEF	C40-C41-C42-C43
2	A	801	PEF	C16-C17-C18-C19
2	B	801	PEF	C1-O3P-P-O1P
2	D	801	PEF	C4-O4P-P-O1P
2	D	801	PEF	C17-C18-C19-C20
2	D	801	PEF	C16-C17-C18-C19
2	D	801	PEF	C14-C15-C16-C17
2	C	801	PEF	C17-C18-C19-C20
2	D	801	PEF	O2-C2-C3-O3
2	D	801	PEF	C31-C32-C33-C34
2	B	801	PEF	C16-C17-C18-C19
2	D	801	PEF	C3-C2-O2-C10
2	D	801	PEF	C1-O3P-P-O1P
2	A	801	PEF	O4P-C4-C5-N

There are no ring outliers.

12 monomers are involved in 55 short contacts:

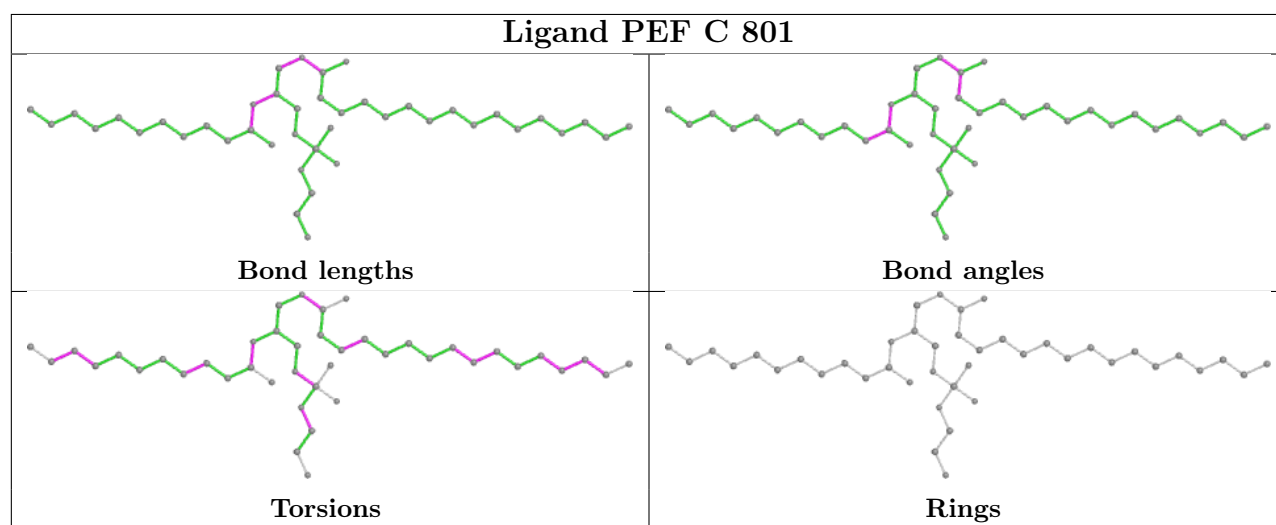
Mol	Chain	Res	Type	Clashes	Symm-Clashes
2	C	801	PEF	11	0
3	B	803	NAG	1	0
2	A	801	PEF	11	0
2	B	801	PEF	10	0
3	A	804	NAG	1	0
3	B	804	NAG	1	0
3	A	803	NAG	1	0
3	C	804	NAG	1	0

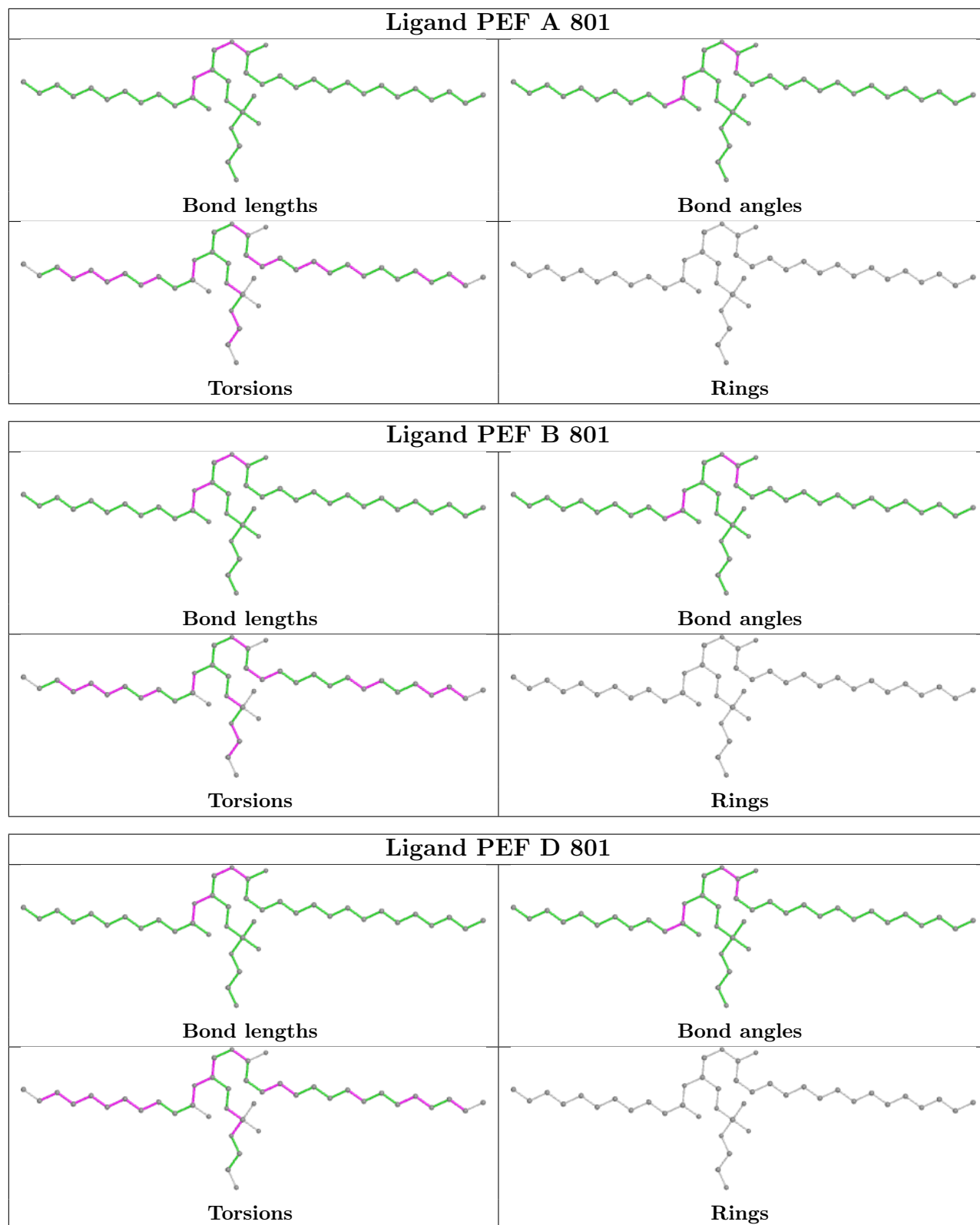
Continued on next page...

Continued from previous page...

Mol	Chain	Res	Type	Clashes	Symm-Clashes
2	D	801	PEF	15	0
3	D	803	NAG	1	0
3	D	804	NAG	1	0
3	C	803	NAG	1	0

The following is a two-dimensional graphical depiction of Mogul quality analysis of bond lengths, bond angles, torsion angles, and ring geometry for all instances of the Ligand of Interest. In addition, ligands with molecular weight > 250 and outliers as shown on the validation Tables will also be included. For torsion angles, if less than 5% of the Mogul distribution of torsion angles is within 10 degrees of the torsion angle in question, then that torsion angle is considered an outlier. Any bond that is central to one or more torsion angles identified as an outlier by Mogul will be highlighted in the graph. For rings, the root-mean-square deviation (RMSD) between the ring in question and similar rings identified by Mogul is calculated over all ring torsion angles. If the average RMSD is greater than 60 degrees and the minimal RMSD between the ring in question and any Mogul-identified rings is also greater than 60 degrees, then that ring is considered an outlier. The outliers are highlighted in purple. The color gray indicates Mogul did not find sufficient equivalents in the CSD to analyse the geometry.





5.7 Other polymers ⓘ

There are no such residues in this entry.

5.8 Polymer linkage issues ⓘ

There are no chain breaks in this entry.

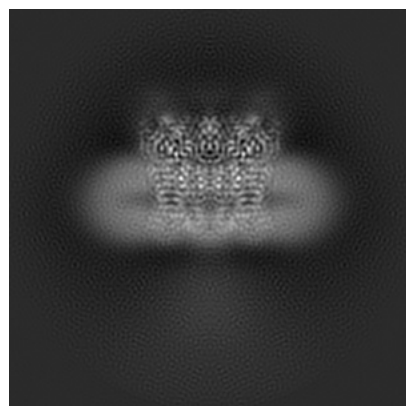
6 Map visualisation [i](#)

This section contains visualisations of the EMDB entry EMD-36858. These allow visual inspection of the internal detail of the map and identification of artifacts.

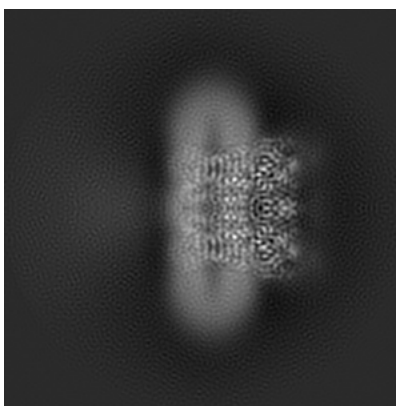
Images derived from a raw map, generated by summing the deposited half-maps, are presented below the corresponding image components of the primary map to allow further visual inspection and comparison with those of the primary map.

6.1 Orthogonal projections [i](#)

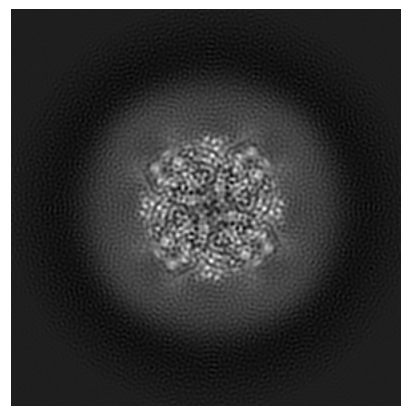
6.1.1 Primary map



X

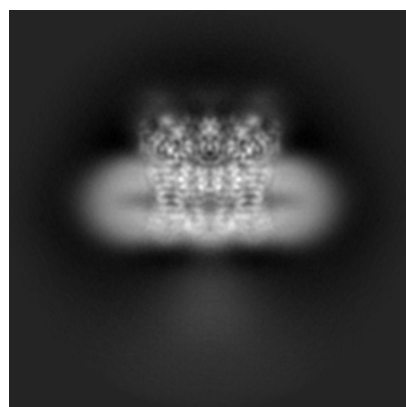


Y

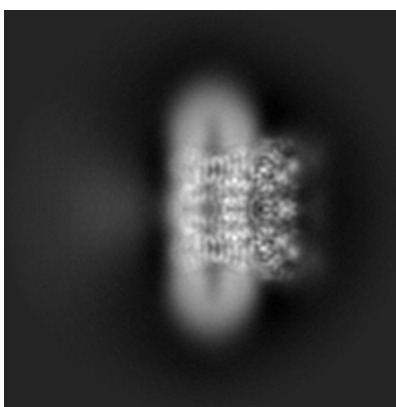


Z

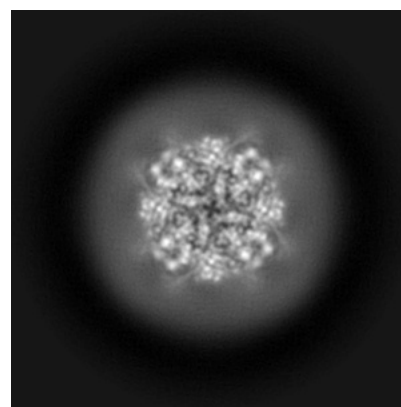
6.1.2 Raw map



X



Y

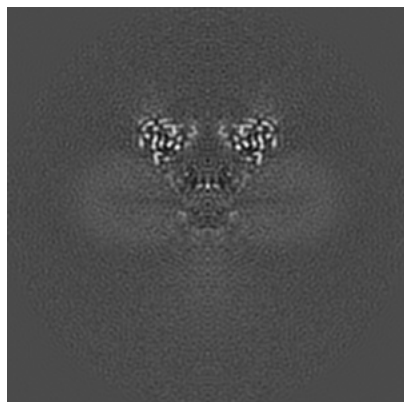


Z

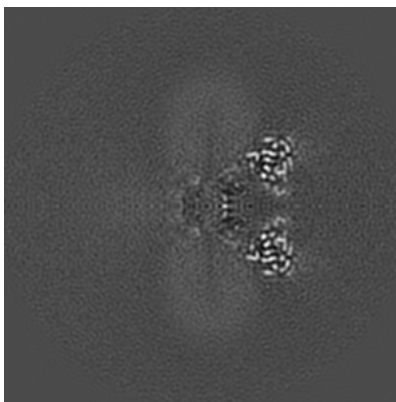
The images above show the map projected in three orthogonal directions.

6.2 Central slices [i](#)

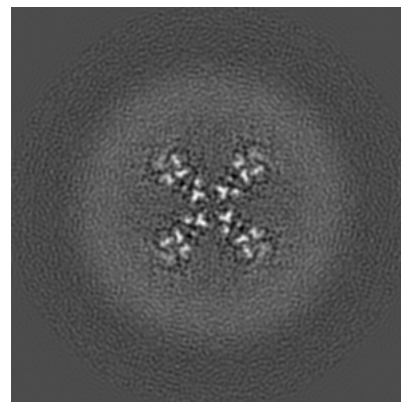
6.2.1 Primary map



X Index: 120

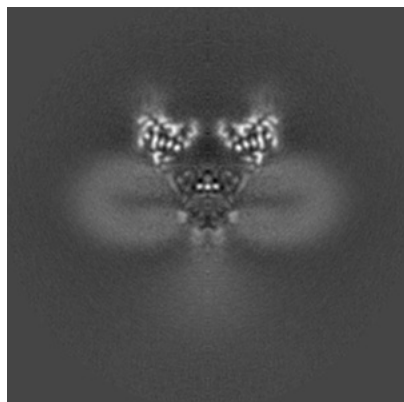


Y Index: 120

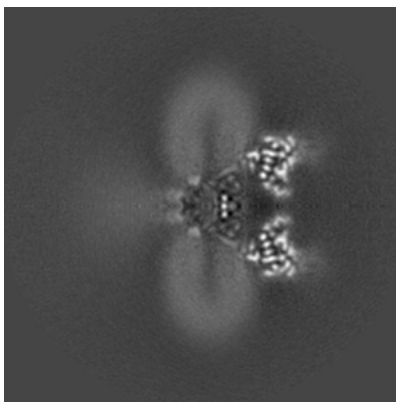


Z Index: 120

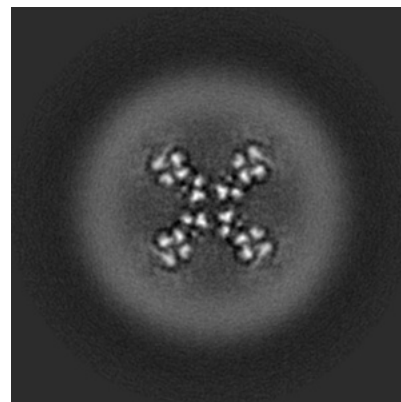
6.2.2 Raw map



X Index: 120



Y Index: 120

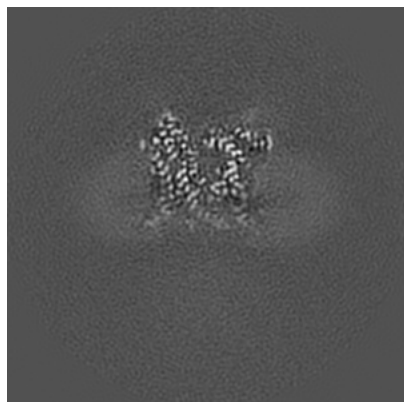


Z Index: 120

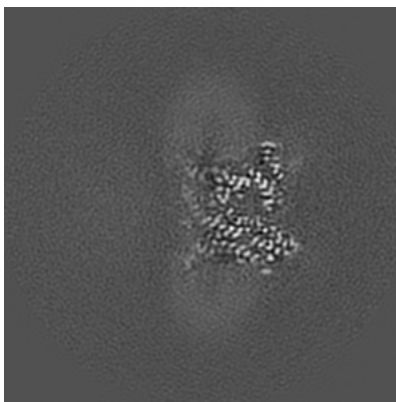
The images above show central slices of the map in three orthogonal directions.

6.3 Largest variance slices [i](#)

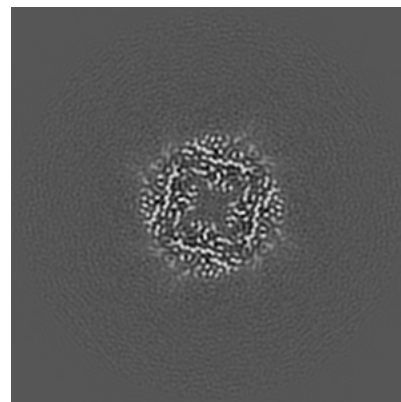
6.3.1 Primary map



X Index: 106

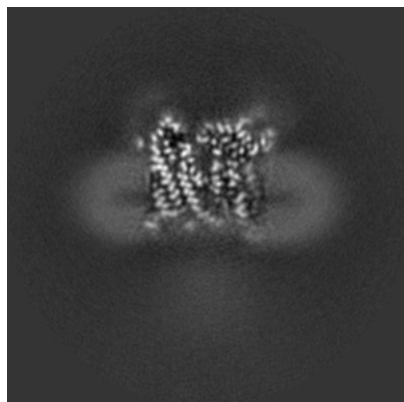


Y Index: 134

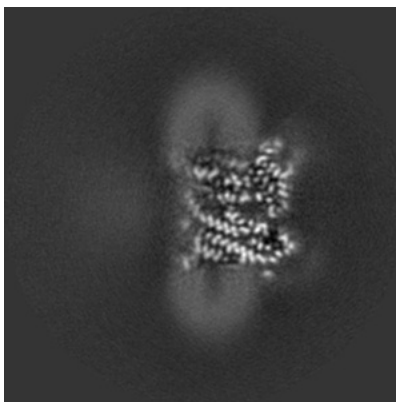


Z Index: 158

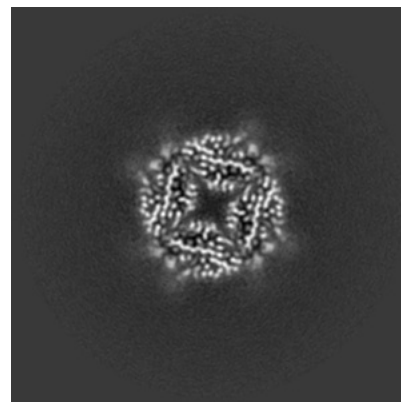
6.3.2 Raw map



X Index: 104



Y Index: 136

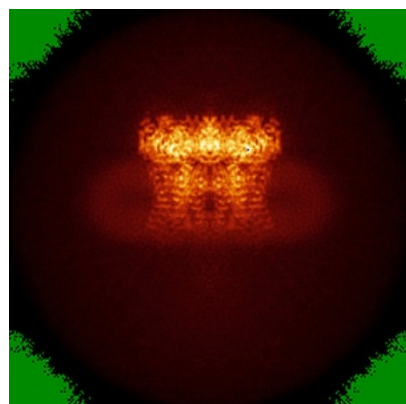


Z Index: 158

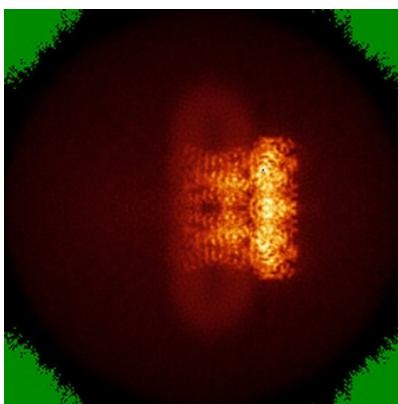
The images above show the largest variance slices of the map in three orthogonal directions.

6.4 Orthogonal standard-deviation projections (False-color) [i](#)

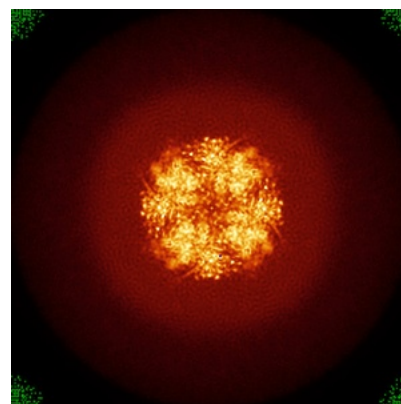
6.4.1 Primary map



X

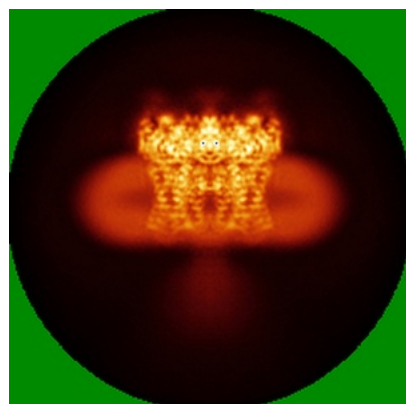


Y

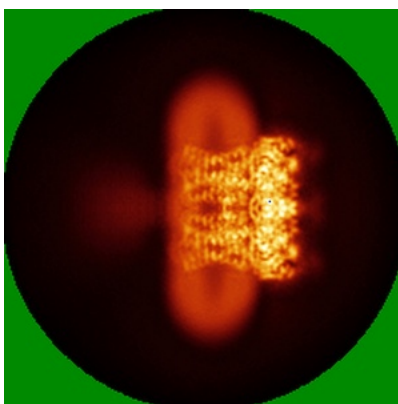


Z

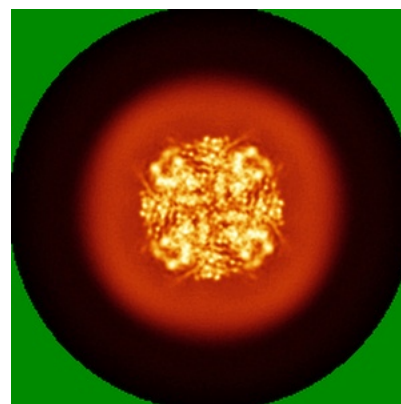
6.4.2 Raw map



X



Y

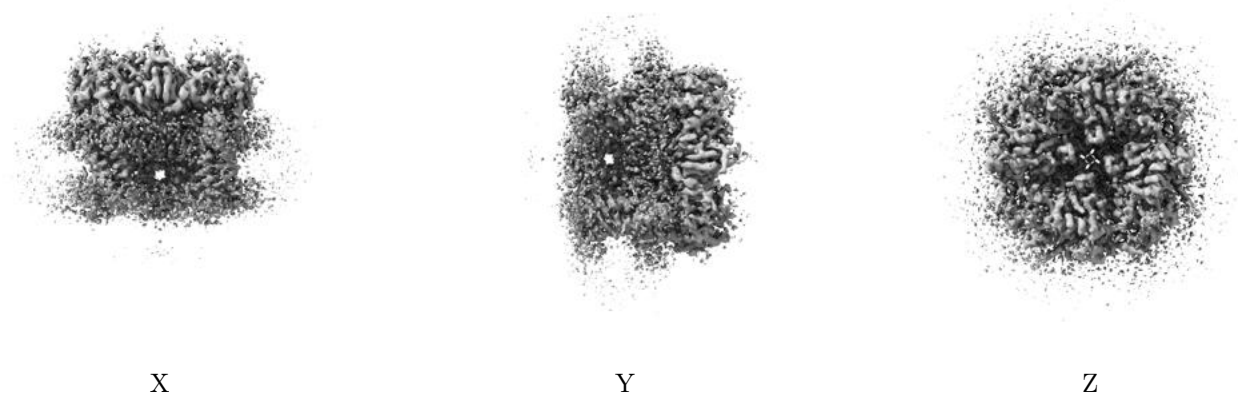


Z

The images above show the map standard deviation projections with false color in three orthogonal directions. Minimum values are shown in green, max in blue, and dark to light orange shades represent small to large values respectively.

6.5 Orthogonal surface views [i](#)

6.5.1 Primary map



The images above show the 3D surface view of the map at the recommended contour level 0.02. These images, in conjunction with the slice images, may facilitate assessment of whether an appropriate contour level has been provided.

6.5.2 Raw map



These images show the 3D surface of the raw map. The raw map's contour level was selected so that its surface encloses the same volume as the primary map does at its recommended contour level.

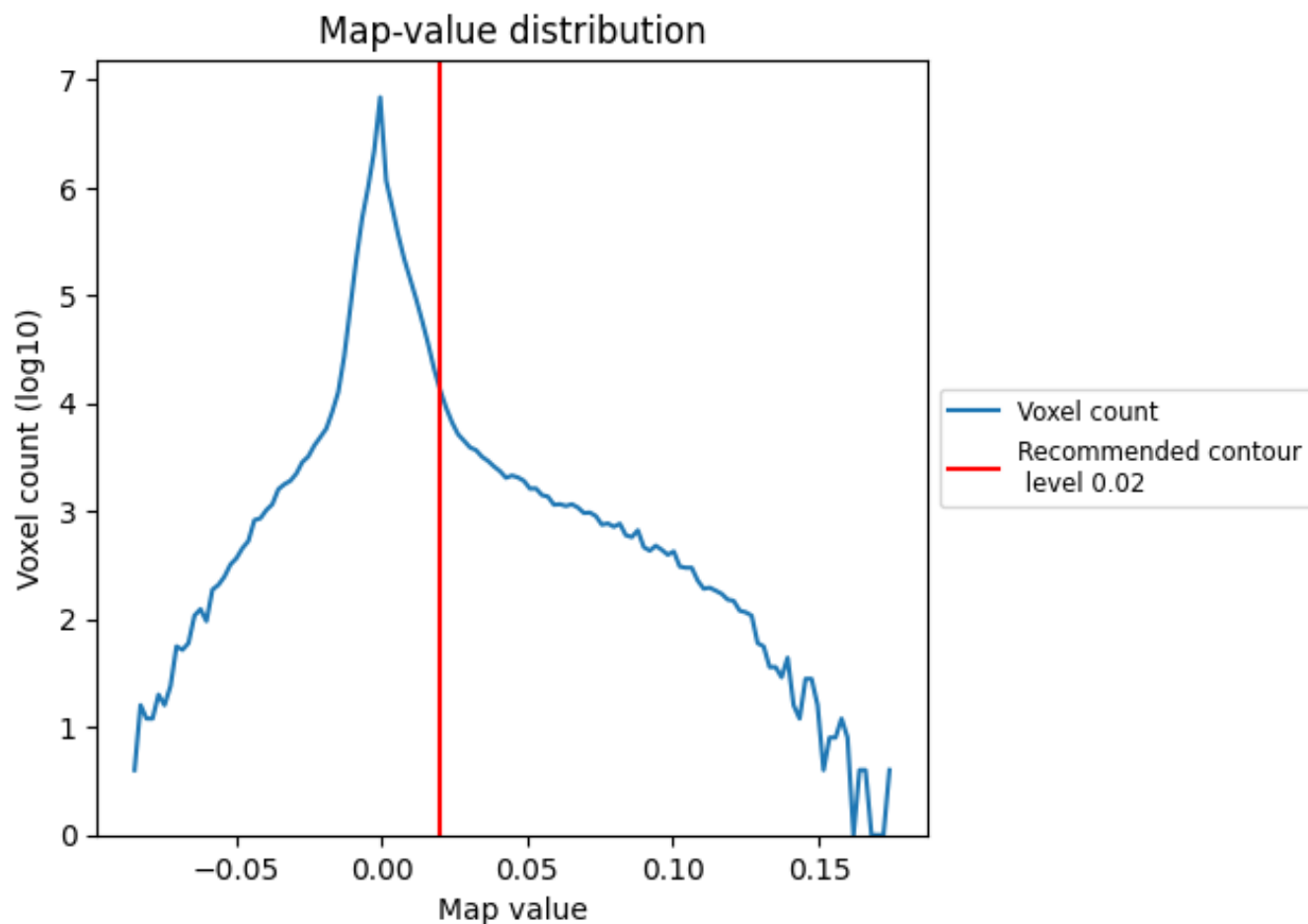
6.6 Mask visualisation [i](#)

This section was not generated. No masks/segmentation were deposited.

7 Map analysis [i](#)

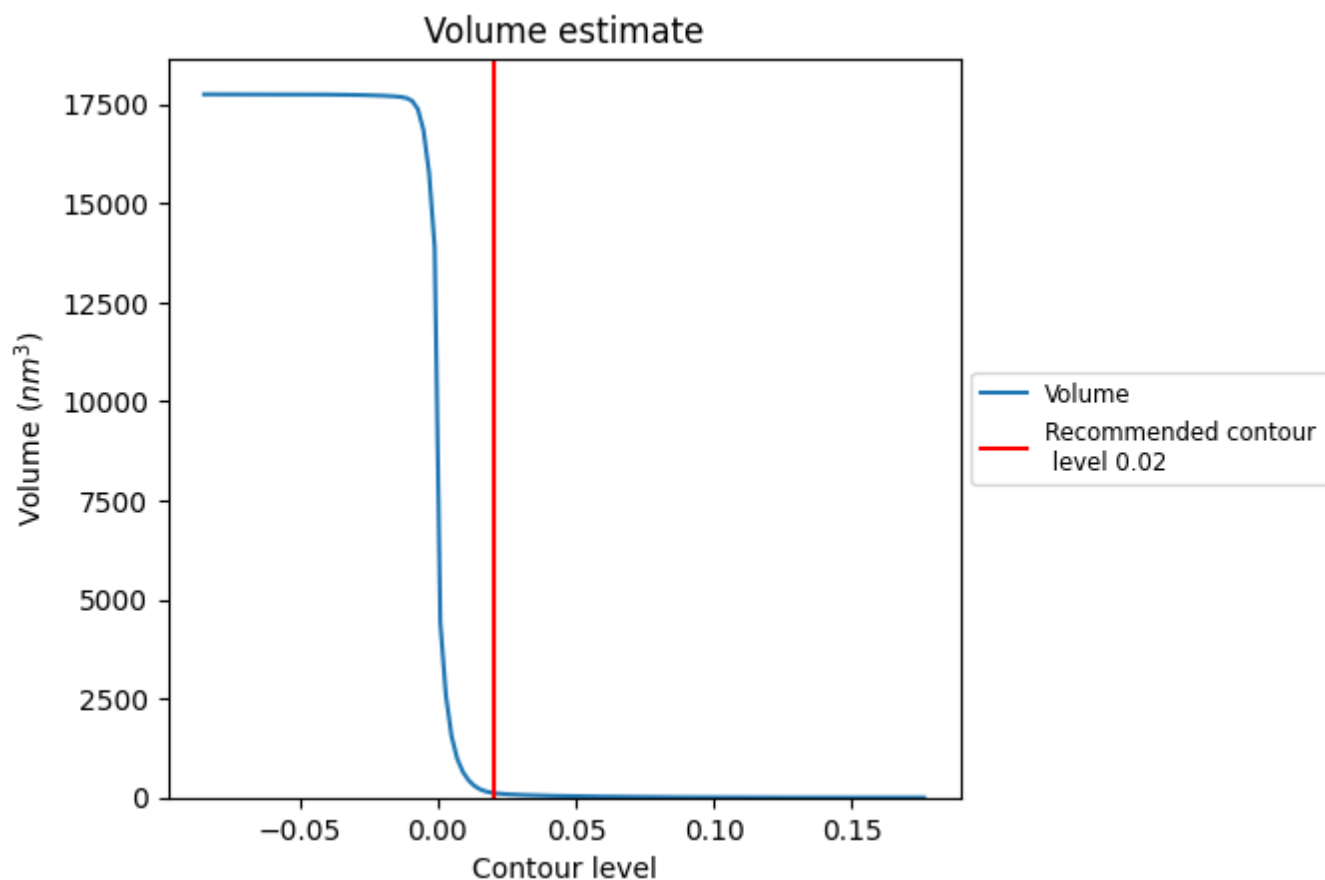
This section contains the results of statistical analysis of the map.

7.1 Map-value distribution [i](#)



The map-value distribution is plotted in 128 intervals along the x-axis. The y-axis is logarithmic. A spike in this graph at zero usually indicates that the volume has been masked.

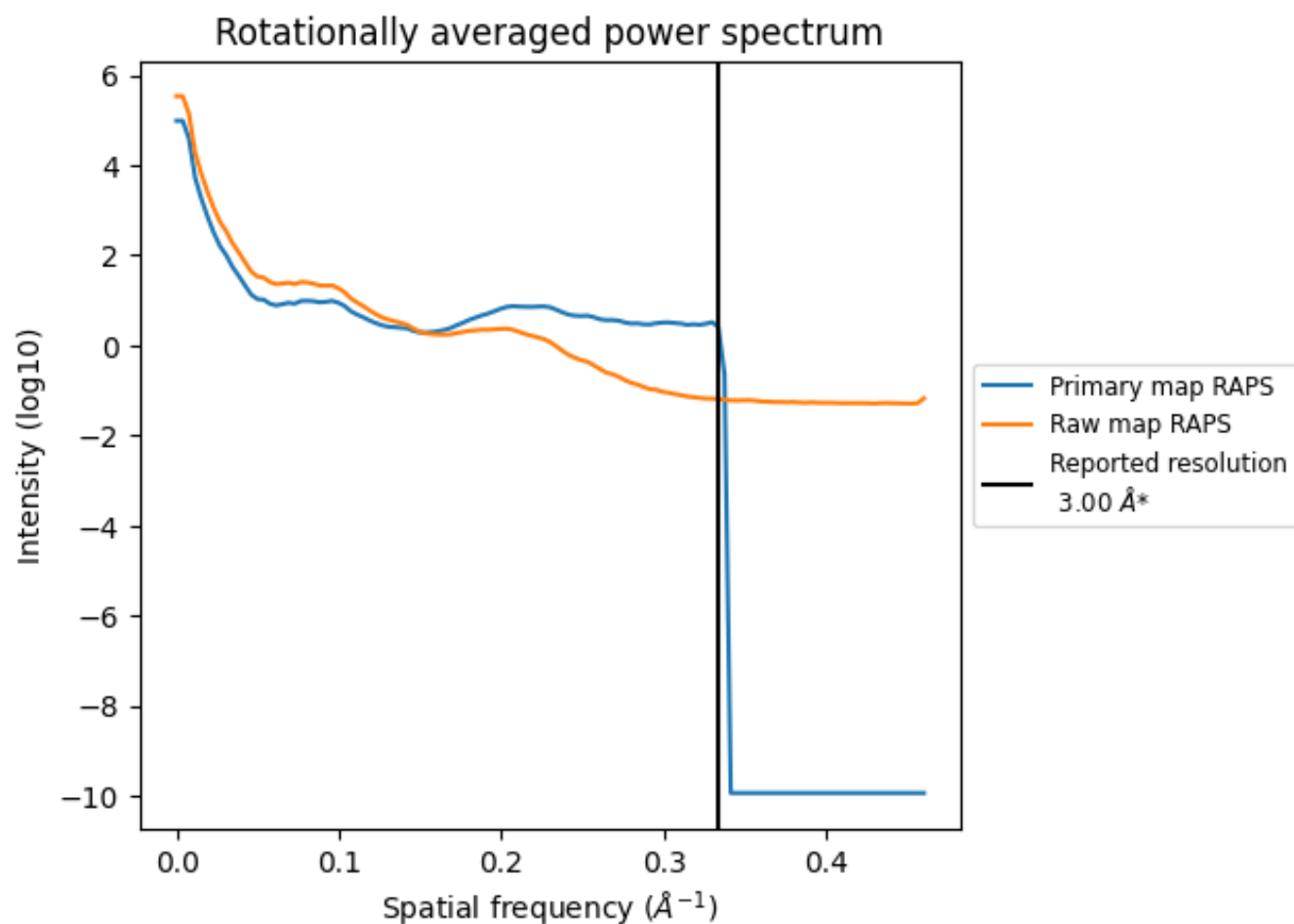
7.2 Volume estimate [i](#)



The volume at the recommended contour level is 118 nm³; this corresponds to an approximate mass of 107 kDa.

The volume estimate graph shows how the enclosed volume varies with the contour level. The recommended contour level is shown as a vertical line and the intersection between the line and the curve gives the volume of the enclosed surface at the given level.

7.3 Rotationally averaged power spectrum ⓘ

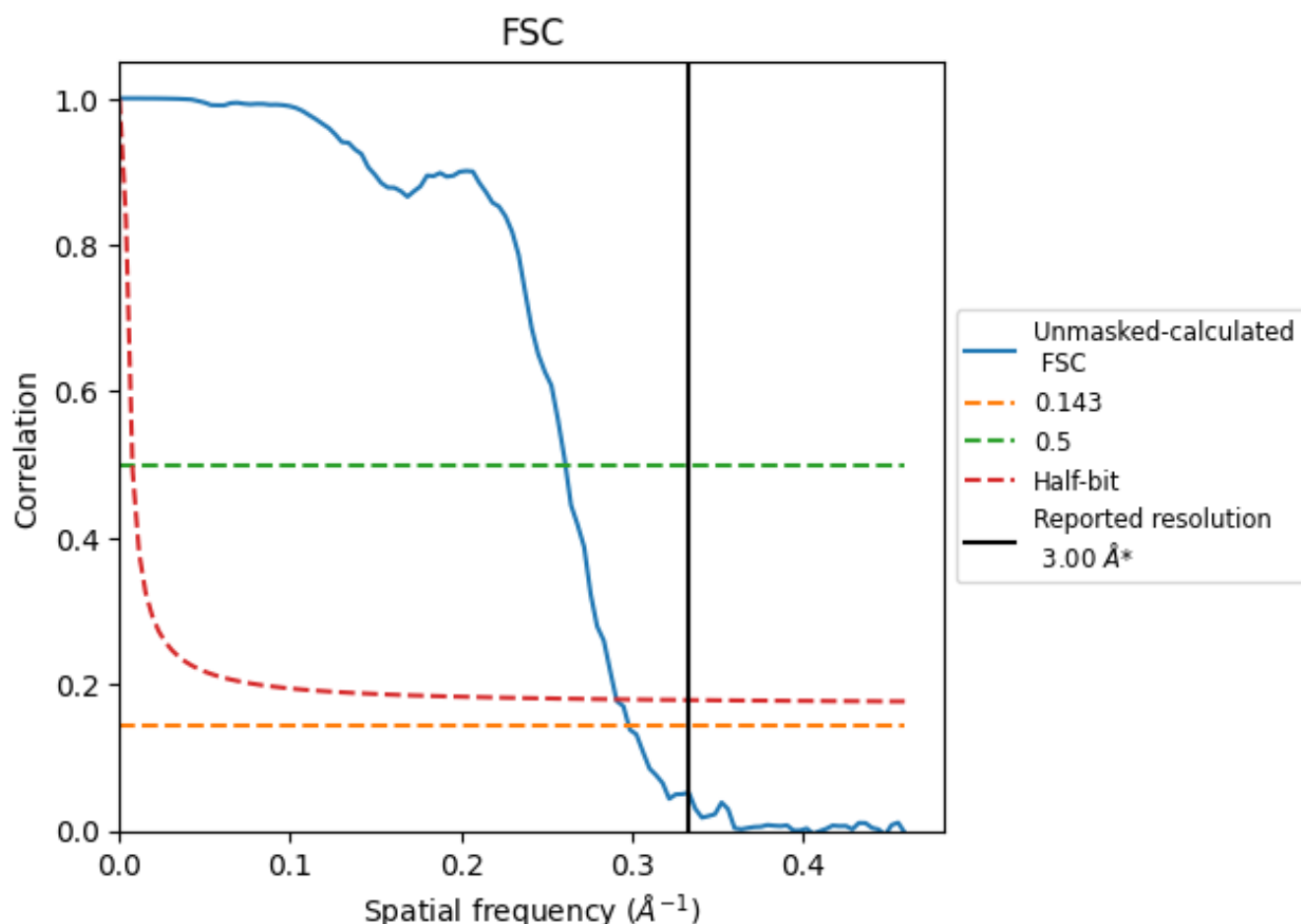


*Reported resolution corresponds to spatial frequency of 0.333 Å⁻¹

8 Fourier-Shell correlation [i](#)

Fourier-Shell Correlation (FSC) is the most commonly used method to estimate the resolution of single-particle and subtomogram-averaged maps. The shape of the curve depends on the imposed symmetry, mask and whether or not the two 3D reconstructions used were processed from a common reference. The reported resolution is shown as a black line. A curve is displayed for the half-bit criterion in addition to lines showing the 0.143 gold standard cut-off and 0.5 cut-off.

8.1 FSC [i](#)



*Reported resolution corresponds to spatial frequency of 0.333 \AA^{-1}

8.2 Resolution estimates [i](#)

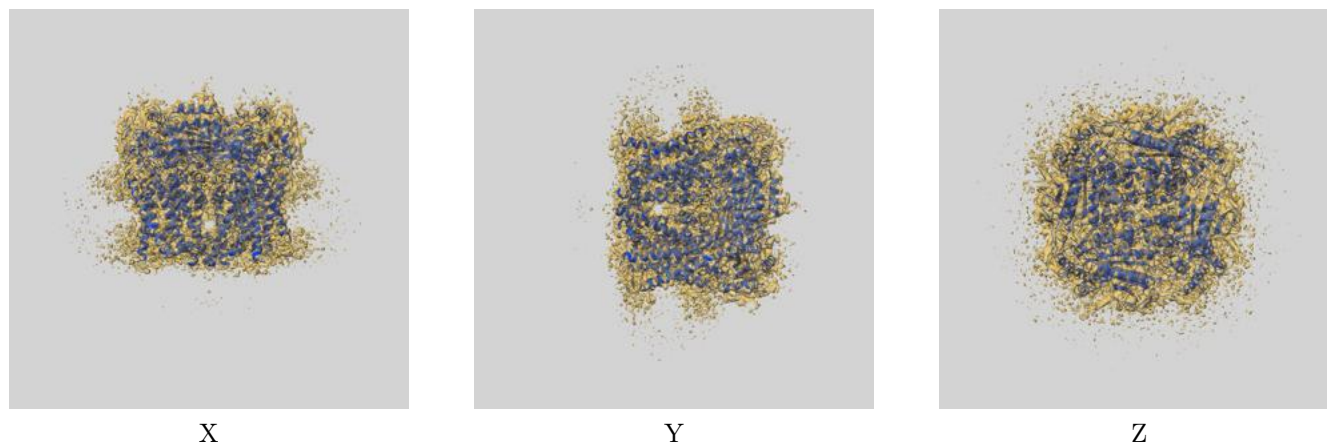
Resolution estimate (Å)	Estimation criterion (FSC cut-off)		
	0.143	0.5	Half-bit
Reported by author	3.00	-	-
Author-provided FSC curve	-	-	-
Unmasked-calculated*	3.35	3.83	3.44

*Resolution estimate based on FSC curve calculated by comparison of deposited half-maps. The value from deposited half-maps intersecting FSC 0.143 CUT-OFF 3.35 differs from the reported value 3.0 by more than 10 %

9 Map-model fit [i](#)

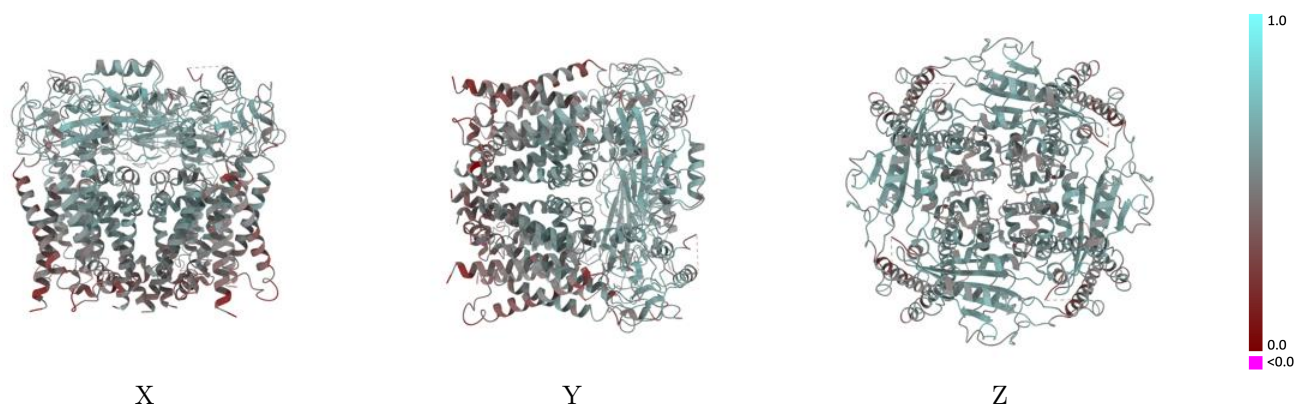
This section contains information regarding the fit between EMDB map EMD-36858 and PDB model 8K3S. Per-residue inclusion information can be found in section [3](#) on page [10](#).

9.1 Map-model overlay [i](#)



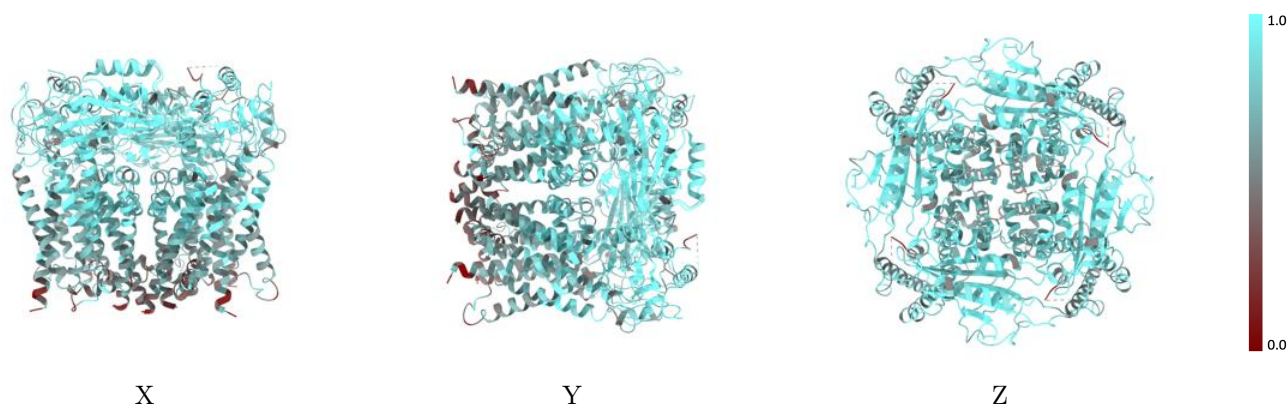
The images above show the 3D surface view of the map at the recommended contour level 0.02 at 50% transparency in yellow overlaid with a ribbon representation of the model coloured in blue. These images allow for the visual assessment of the quality of fit between the atomic model and the map.

9.2 Q-score mapped to coordinate model [i](#)



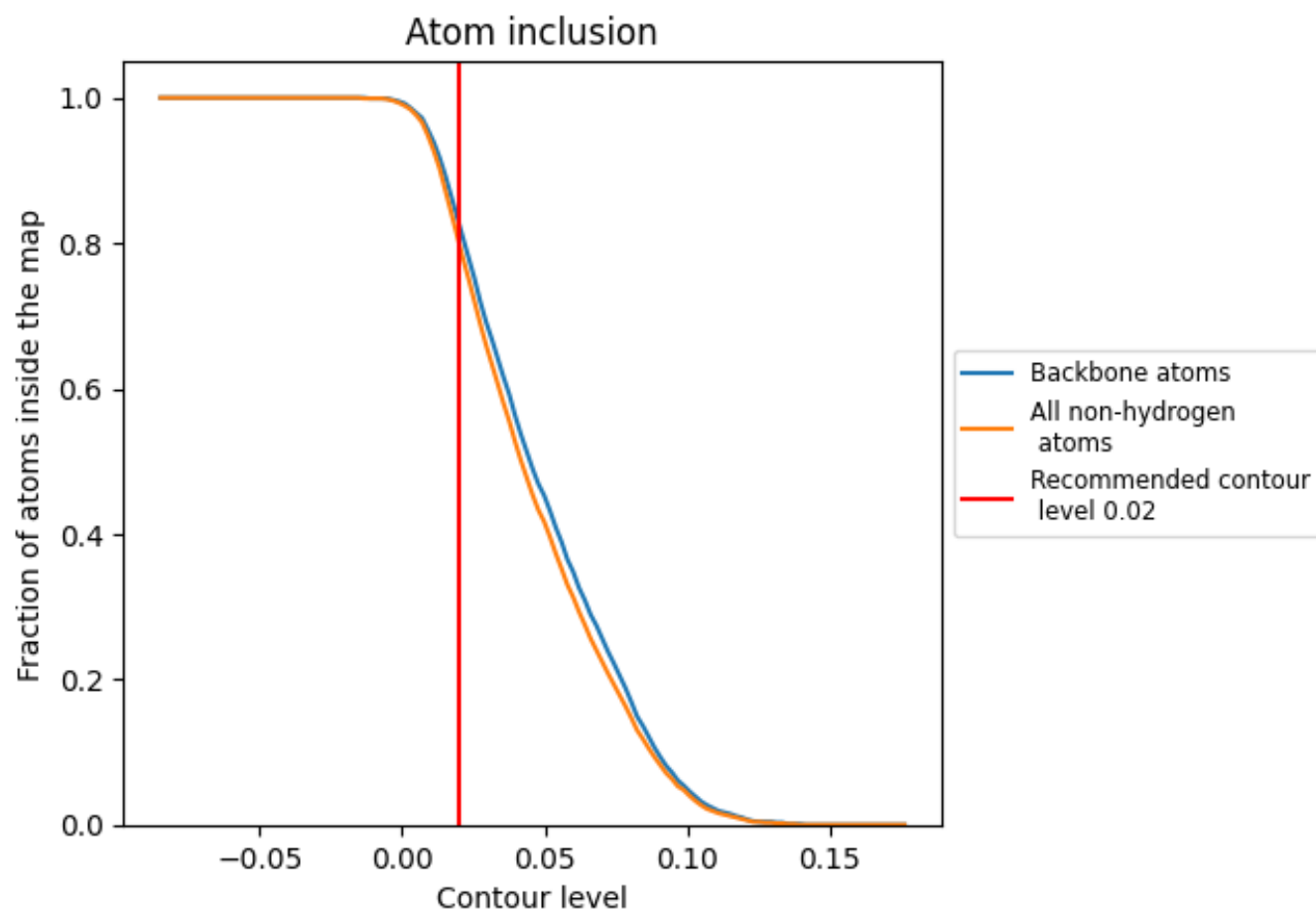
The images above show the model with each residue coloured according to its Q-score. This shows their resolvability in the map with higher Q-score values reflecting better resolvability. Please note: Q-score is calculating the resolvability of atoms, and thus high values are only expected at resolutions at which atoms can be resolved. Low Q-score values may therefore be expected for many entries.

9.3 Atom inclusion mapped to coordinate model [i](#)



The images above show the model with each residue coloured according to its atom inclusion. This shows to what extent they are inside the map at the recommended contour level (0.02).

9.4 Atom inclusion [i](#)



At the recommended contour level, 83% of all backbone atoms, 80% of all non-hydrogen atoms, are inside the map.

9.5 Map-model fit summary ⓘ

The table lists the average atom inclusion at the recommended contour level (0.02) and Q-score for the entire model and for each chain.

Chain	Atom inclusion	Q-score
All	<div><div></div></div> 0.7990	<div><div></div></div> 0.5170
A	<div><div></div></div> 0.8000	<div><div></div></div> 0.5170
B	<div><div></div></div> 0.7990	<div><div></div></div> 0.5180
C	<div><div></div></div> 0.8000	<div><div></div></div> 0.5160
D	<div><div></div></div> 0.7980	<div><div></div></div> 0.5160

