



Full wwPDB X-ray Structure Validation Report ⓘ

May 22, 2020 – 03:47 am BST

PDB ID : 4JXZ
Title : Structure of E. coli glutaminyl-tRNA synthetase bound to ATP and a tRNA(Gln) acceptor containing a UUG anticodon
Authors : Perona, J.J.; Rodriguez-Hernandez, A.
Deposited on : 2013-03-28
Resolution : 2.40 Å(reported)

This is a Full wwPDB X-ray Structure Validation Report for a publicly released PDB entry.

We welcome your comments at validation@mail.wwpdb.org

A user guide is available at

<https://www.wwpdb.org/validation/2017/XrayValidationReportHelp>

with specific help available everywhere you see the ⓘ symbol.

The following versions of software and data (see [references ⓘ](#)) were used in the production of this report:

MolProbity : 4.02b-467
Mogul : 1.8.5 (274361), CSD as541be (2020)
Xtriage (Phenix) : 1.13
EDS : 2.11
buster-report : 1.1.7 (2018)
Percentile statistics : 20191225.v01 (using entries in the PDB archive December 25th 2019)
Refmac : 5.8.0158
CCP4 : 7.0.044 (Gargrove)
Ideal geometry (proteins) : Engh & Huber (2001)
Ideal geometry (DNA, RNA) : Parkinson et al. (1996)
Validation Pipeline (wwPDB-VP) : 2.11

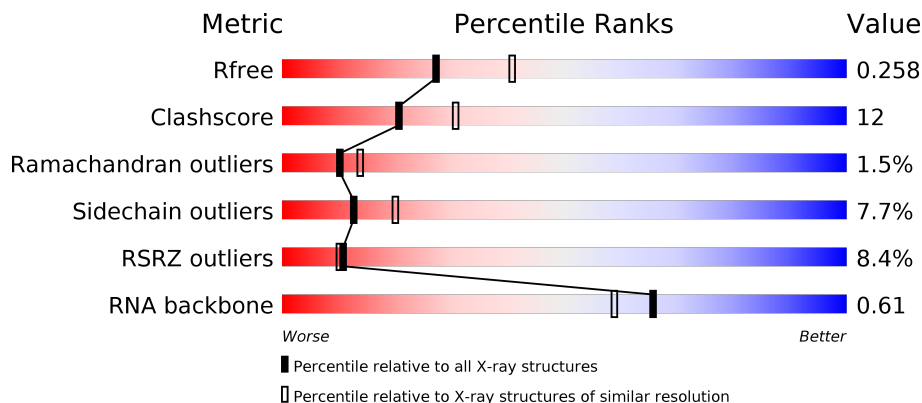
1 Overall quality at a glance

The following experimental techniques were used to determine the structure:

X-RAY DIFFRACTION

The reported resolution of this entry is 2.40 Å.

Percentile scores (ranging between 0-100) for global validation metrics of the entry are shown in the following graphic. The table shows the number of entries on which the scores are based.



Metric	Whole archive (#Entries)	Similar resolution (#Entries, resolution range(Å))
R_{free}	130704	3907 (2.40-2.40)
Clashscore	141614	4398 (2.40-2.40)
Ramachandran outliers	138981	4318 (2.40-2.40)
Sidechain outliers	138945	4319 (2.40-2.40)
RSRZ outliers	127900	3811 (2.40-2.40)
RNA backbone	3102	1174 (2.80-2.00)

The table below summarises the geometric issues observed across the polymeric chains and their fit to the electron density. The red, orange, yellow and green segments on the lower bar indicate the fraction of residues that contain outliers for ≥ 3 , 2, 1 and 0 types of geometric quality criteria respectively. A grey segment represents the fraction of residues that are not modelled. The numeric value for each fraction is indicated below the corresponding segment, with a dot representing fractions $\leq 5\%$. The upper red bar (where present) indicates the fraction of residues that have poor fit to the electron density. The numeric value is given above the bar.

Mol	Chain	Length	Quality of chain
1	A	553	
2	B	75	

The following table lists non-polymeric compounds, carbohydrate monomers and non-standard residues in protein, DNA, RNA chains that are outliers for geometric or electron-density-fit criteria:

Mol	Type	Chain	Res	Chirality	Geometry	Clashes	Electron density
4	SO4	A	603	-	-	-	X

2 Entry composition i

There are 5 unique types of molecules in this entry. The entry contains 6027 atoms, of which 0 are hydrogens and 0 are deuteriums.

In the tables below, the ZeroOcc column contains the number of atoms modelled with zero occupancy, the AltConf column contains the number of residues with at least one atom in alternate conformation and the Trace column contains the number of residues modelled with at most 2 atoms.

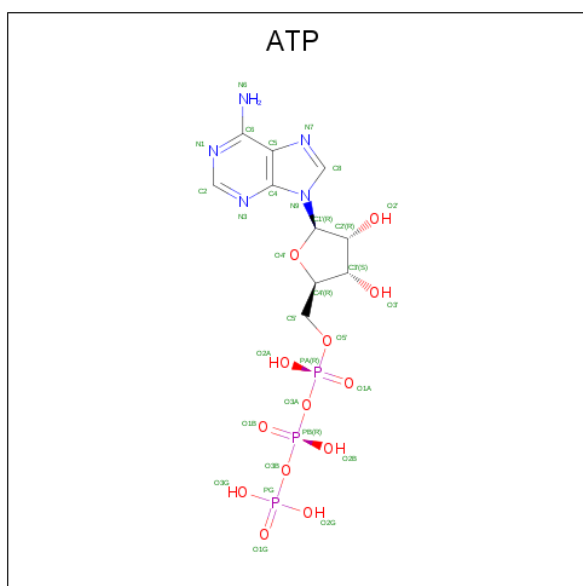
- Molecule 1 is a protein called Glutamine-tRNA ligase.

Mol	Chain	Residues	Atoms					ZeroOcc	AltConf	Trace
			Total	C	N	O	S			
1	A	538	4291	2712	757	801	21	0	0	0

- Molecule 2 is a RNA chain called RNA (71-MER).

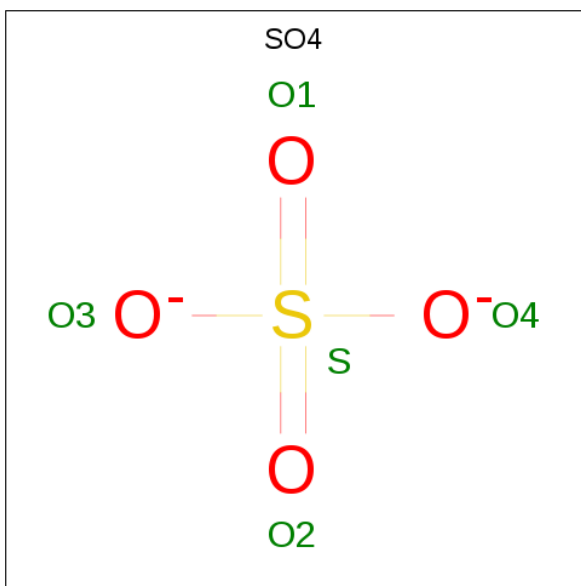
Mol	Chain	Residues	Atoms					ZeroOcc	AltConf	Trace
			Total	C	N	O	P			
2	B	71	1511	674	269	497	71	0	0	0

- Molecule 3 is ADENOSINE-5'-TRIPHOSPHATE (three-letter code: ATP) (formula: $C_{10}H_{16}N_5O_{13}P_3$).



Mol	Chain	Residues	Atoms					ZeroOcc	AltConf
			Total	C	N	O	P		
3	A	1	31	10	5	13	3	0	0

- Molecule 4 is SULFATE ION (three-letter code: SO4) (formula: O₄S).



Mol	Chain	Residues	Atoms	ZeroOcc	AltConf
4	A	1	Total O S 5 4 1	0	0
4	A	1	Total O S 5 4 1	0	0

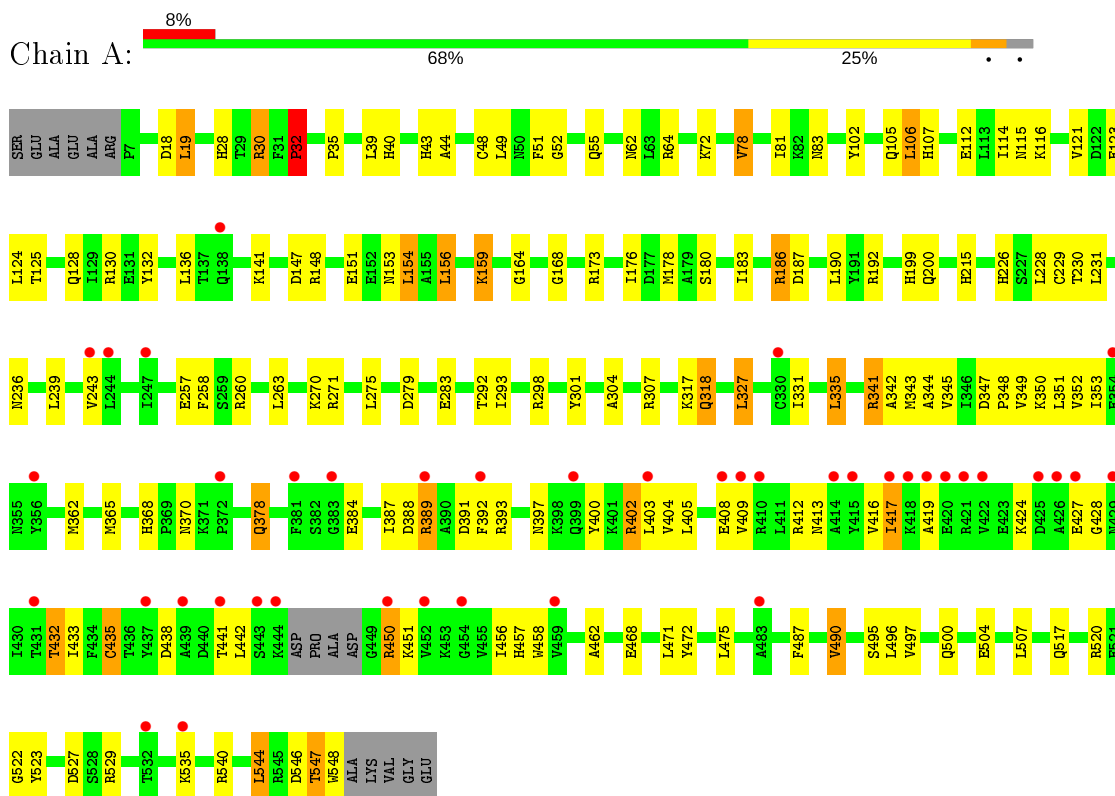
- Molecule 5 is water.

Mol	Chain	Residues	Atoms	ZeroOcc	AltConf
5	A	148	Total O 148 148	0	0
5	B	36	Total O 36 36	0	0

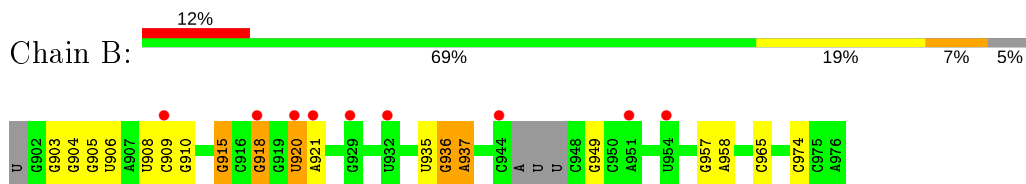
3 Residue-property plots

These plots are drawn for all protein, RNA and DNA chains in the entry. The first graphic for a chain summarises the proportions of the various outlier classes displayed in the second graphic. The second graphic shows the sequence view annotated by issues in geometry and electron density. Residues are color-coded according to the number of geometric quality criteria for which they contain at least one outlier: green = 0, yellow = 1, orange = 2 and red = 3 or more. A red dot above a residue indicates a poor fit to the electron density ($RSRZ > 2$). Stretches of 2 or more consecutive residues without any outlier are shown as a green connector. Residues present in the sample, but not in the model, are shown in grey.

- Molecule 1: Glutamine-tRNA ligase



- Molecule 2: RNA (71-MER)



4 Data and refinement statistics

Property	Value	Source
Space group	C 2 2 21	Depositor
Cell constants a, b, c, α , β , γ	93.27Å 236.71Å 114.01Å 90.00° 90.00° 90.00°	Depositor
Resolution (Å)	43.40 – 2.40 43.39 – 2.30	Depositor EDS
% Data completeness (in resolution range)	96.7 (43.40-2.40) 98.1 (43.39-2.30)	Depositor EDS
R_{merge}	0.05	Depositor
R_{sym}	(Not available)	Depositor
$\langle I/\sigma(I) \rangle$ ¹	2.64 (at 2.29Å)	Xtrriage
Refinement program	CNS	Depositor
R, R_{free}	0.230 , 0.266 0.225 , 0.258	Depositor DCC
R_{free} test set	10638 reflections (9.82%)	wwPDB-VP
Wilson B-factor (Å ²)	48.0	Xtrriage
Anisotropy	0.585	Xtrriage
Bulk solvent k_{sol} (e/Å ³), B_{sol} (Å ²)	0.38 , 50.9	EDS
L-test for twinning ²	$\langle L \rangle = 0.52$, $\langle L^2 \rangle = 0.35$	Xtrriage
Estimated twinning fraction	No twinning to report.	Xtrriage
F_o, F_c correlation	0.94	EDS
Total number of atoms	6027	wwPDB-VP
Average B, all atoms (Å ²)	56.0	wwPDB-VP

Xtrriage's analysis on translational NCS is as follows: *The largest off-origin peak in the Patterson function is 3.44% of the height of the origin peak. No significant pseudotranslation is detected.*

¹ Intensities estimated from amplitudes.

² Theoretical values of $\langle |L| \rangle$, $\langle L^2 \rangle$ for acentric reflections are 0.5, 0.333 respectively for untwinned datasets, and 0.375, 0.2 for perfectly twinned datasets.

5 Model quality [i](#)

5.1 Standard geometry [i](#)

Bond lengths and bond angles in the following residue types are not validated in this section: SO4, ATP

The Z score for a bond length (or angle) is the number of standard deviations the observed value is removed from the expected value. A bond length (or angle) with $|Z| > 5$ is considered an outlier worth inspection. RMSZ is the root-mean-square of all Z scores of the bond lengths (or angles).

Mol	Chain	Bond lengths		Bond angles	
		RMSZ	# Z >5	RMSZ	# Z >5
1	A	0.38	0/4393	0.61	0/5954
2	B	0.38	0/1686	0.69	0/2623
All	All	0.38	0/6079	0.63	0/8577

Chiral center outliers are detected by calculating the chiral volume of a chiral center and verifying if the center is modelled as a planar moiety or with the opposite hand. A planarity outlier is detected by checking planarity of atoms in a peptide group, atoms in a mainchain group or atoms of a sidechain that are expected to be planar.

Mol	Chain	#Chirality outliers	#Planarity outliers
2	B	0	1

There are no bond length outliers.

There are no bond angle outliers.

There are no chirality outliers.

All (1) planarity outliers are listed below:

Mol	Chain	Res	Type	Group
2	B	915	G	Sidechain

5.2 Too-close contacts [i](#)

In the following table, the Non-H and H(model) columns list the number of non-hydrogen atoms and hydrogen atoms in the chain respectively. The H(added) column lists the number of hydrogen atoms added and optimized by MolProbity. The Clashes column lists the number of clashes within the asymmetric unit, whereas Symm-Clashes lists symmetry related clashes.

Mol	Chain	Non-H	H(model)	H(added)	Clashes	Symm-Clashes
1	A	4291	0	4121	116	0
2	B	1511	0	769	17	0
3	A	31	0	12	2	0
4	A	10	0	0	0	0
5	A	148	0	0	11	0
5	B	36	0	0	4	0
All	All	6027	0	4902	130	0

The all-atom clashscore is defined as the number of clashes found per 1000 atoms (including hydrogen atoms). The all-atom clashscore for this structure is 12.

All (130) close contacts within the same asymmetric unit are listed below, sorted by their clash magnitude.

Atom-1	Atom-2	Interatomic distance (Å)	Clash overlap (Å)
1:A:39:LEU:HD13	1:A:81:ILE:HG12	1.42	1.00
1:A:343:MET:HE3	1:A:458:TRP:H	1.30	0.96
1:A:136:LEU:HD23	1:A:183:ILE:HD11	1.52	0.92
1:A:40:HIS:H	1:A:43:HIS:HD2	1.20	0.90
1:A:83:ASN:HB2	5:A:830:HOH:O	1.84	0.78
1:A:522:GLY:HA2	1:A:544:LEU:HD13	1.69	0.75
1:A:349:VAL:HB	1:A:389:ARG:HD2	1.68	0.75
1:A:471:LEU:HB2	1:A:497:VAL:HG13	1.72	0.71
1:A:40:HIS:H	1:A:43:HIS:CD2	2.06	0.71
1:A:368:HIS:HD2	1:A:370:ASN:H	1.39	0.70
1:A:30:ARG:NH2	1:A:228:LEU:O	2.26	0.68
1:A:341:ARG:N	1:A:341:ARG:HD2	2.10	0.66
1:A:331:ILE:HG13	1:A:335:LEU:HD22	1.78	0.66
1:A:403:LEU:HD11	1:A:419:ALA:HB2	1.80	0.63
1:A:102:TYR:O	1:A:106:LEU:HD22	1.99	0.62
1:A:409:VAL:HG13	5:A:845:HOH:O	1.98	0.62
1:A:136:LEU:HD23	1:A:183:ILE:CD1	2.27	0.62
1:A:40:HIS:HA	1:A:292:THR:HA	1.81	0.61
1:A:392:PHE:HD1	1:A:403:LEU:HG	1.65	0.61
1:A:416:VAL:HB	1:A:441:THR:HG21	1.81	0.61
1:A:40:HIS:N	1:A:43:HIS:HD2	1.97	0.61
1:A:123:GLU:OE1	1:A:148:ARG:NH2	2.35	0.60
1:A:159:LYS:HD3	1:A:164:GLY:HA3	1.84	0.60
1:A:342:ALA:HB1	1:A:507:LEU:HD21	1.84	0.60
1:A:409:VAL:HG22	5:A:845:HOH:O	2.02	0.59
1:A:433:ILE:HG22	1:A:435:CYS:SG	2.42	0.59
1:A:112:GLU:O	1:A:116:LYS:HG3	2.02	0.59
1:A:347:ASP:O	1:A:388:ASP:HA	2.04	0.58

Continued on next page...

Continued from previous page...

Atom-1	Atom-2	Interatomic distance (Å)	Clash overlap (Å)
1:A:230:THR:HG21	1:A:260:ARG:HG2	1.86	0.58
1:A:487:PHE:O	1:A:490:VAL:HG12	2.04	0.58
1:A:352:VAL:HG12	1:A:384:GLU:HG2	1.86	0.57
1:A:409:VAL:N	5:A:845:HOH:O	2.36	0.57
1:A:28:HIS:HE1	1:A:62:ASN:OD1	1.88	0.57
1:A:347:ASP:OD2	1:A:389:ARG:HB2	2.05	0.57
1:A:520:ARG:HG2	2:B:935:U:H1'	1.86	0.57
1:A:393:ARG:O	1:A:404:VAL:HA	2.05	0.56
1:A:517:GLN:HG3	1:A:523:TYR:CE1	2.40	0.56
1:A:18:ASP:OD2	1:A:226:HIS:HE1	1.88	0.55
2:B:920:U:H2'	2:B:920:U:O2	2.06	0.55
1:A:180:SER:O	1:A:186:ARG:NH1	2.35	0.55
1:A:472:TYR:HA	1:A:495:SER:O	2.08	0.54
2:B:909:C:H2'	5:B:1030:HOH:O	2.08	0.54
1:A:301:TYR:CE2	1:A:327:LEU:HD22	2.43	0.54
1:A:168:GLY:HA2	2:B:974:C:N3	2.23	0.53
1:A:527:ASP:CB	5:A:826:HOH:O	2.56	0.53
1:A:298:ARG:HH12	1:A:529:ARG:CZ	2.21	0.53
1:A:32:PRO:HA	1:A:64:ARG:O	2.09	0.53
1:A:178:MET:O	1:A:186:ARG:HD2	2.10	0.52
1:A:546:ASP:O	1:A:547:THR:HG23	2.09	0.51
2:B:936:G:H3'	2:B:937:A:C5'	2.40	0.51
1:A:114:ILE:HG21	1:A:154:LEU:HD13	1.92	0.51
1:A:468:GLU:HG3	1:A:500:GLN:HE22	1.77	0.50
1:A:393:ARG:HD3	1:A:400:TYR:CZ	2.46	0.50
1:A:471:LEU:HD22	1:A:540:ARG:NH1	2.27	0.50
1:A:402:ARG:C	1:A:409:VAL:HG11	2.32	0.50
1:A:318:GLN:HG3	2:B:906:U:O3'	2.12	0.50
1:A:39:LEU:HA	1:A:43:HIS:CD2	2.46	0.50
1:A:151:GLU:H	1:A:151:GLU:CD	2.15	0.49
1:A:121:VAL:HG21	1:A:156:LEU:HB3	1.95	0.49
1:A:317:LYS:H	1:A:318:GLN:NE2	2.11	0.49
1:A:136:LEU:CD2	1:A:183:ILE:HD11	2.35	0.49
1:A:115:ASN:HD21	1:A:154:LEU:HD21	1.77	0.49
2:B:936:G:H3'	2:B:937:A:H5'	1.94	0.48
1:A:130:ARG:HB2	1:A:130:ARG:NH1	2.28	0.48
1:A:275:LEU:HD11	1:A:279:ASP:OD2	2.12	0.48
1:A:283:GLU:HB3	1:A:529:ARG:NH1	2.28	0.48
1:A:344:ALA:O	1:A:457:HIS:HD2	1.97	0.48
1:A:403:LEU:HD13	5:A:845:HOH:O	2.14	0.48
1:A:298:ARG:NH1	1:A:529:ARG:CZ	2.77	0.47

Continued on next page...

Continued from previous page...

Atom-1	Atom-2	Interatomic distance (Å)	Clash overlap (Å)
1:A:48:CYS:O	1:A:52:GLY:HA3	2.14	0.47
2:B:905:G:H5''	5:B:1023:HOH:O	2.14	0.47
1:A:236:ASN:HD22	1:A:236:ASN:H	1.62	0.47
2:B:918:G:H3'	5:B:1033:HOH:O	2.14	0.47
1:A:450:ARG:HG2	1:A:451:LYS:H	1.79	0.47
1:A:391:ASP:O	1:A:402:ARG:HB3	2.15	0.47
1:A:301:TYR:HE2	1:A:327:LEU:HD22	1.79	0.47
1:A:408:GLU:HB2	1:A:417:ILE:O	2.14	0.47
1:A:121:VAL:H	1:A:153:ASN:ND2	2.14	0.46
2:B:949:G:H1	2:B:965:C:H42	1.63	0.46
1:A:125:THR:OG1	1:A:128:GLN:HG3	2.15	0.46
1:A:392:PHE:CD1	1:A:403:LEU:HG	2.48	0.46
1:A:344:ALA:O	1:A:457:HIS:CD2	2.69	0.46
1:A:472:TYR:CE1	1:A:496:LEU:HD13	2.51	0.46
2:B:908:U:C2	2:B:915:G:O6	2.69	0.46
1:A:335:LEU:HB3	1:A:523:TYR:CD1	2.51	0.46
1:A:362:MET:CG	1:A:378:GLN:HG3	2.47	0.45
1:A:304:ALA:HA	1:A:307:ARG:NH1	2.31	0.45
1:A:173:ARG:HD2	1:A:187:ASP:O	2.16	0.45
1:A:351:LEU:C	1:A:351:LEU:HD23	2.37	0.45
1:A:132:TYR:CD2	1:A:141:LYS:HG3	2.52	0.45
2:B:903:G:O2'	2:B:904:G:H5'	2.16	0.45
1:A:123:GLU:HG3	1:A:148:ARG:HH21	1.83	0.44
1:A:230:THR:HA	1:A:258:PHE:O	2.18	0.44
1:A:389:ARG:HH11	1:A:389:ARG:HG3	1.82	0.44
1:A:270:LYS:HE3	3:A:601:ATP:O1B	2.18	0.44
1:A:348:PRO:HA	1:A:387:ILE:O	2.18	0.43
1:A:30:ARG:NH1	1:A:215:HIS:NE2	2.66	0.43
1:A:365:MET:HG2	1:A:413:ASN:CB	2.48	0.43
1:A:365:MET:HG2	1:A:413:ASN:HB3	2.01	0.43
1:A:44:ALA:HB2	1:A:293:ILE:HD11	2.00	0.43
1:A:39:LEU:CD1	1:A:81:ILE:HG12	2.30	0.43
2:B:918:G:H2'	5:B:1033:HOH:O	2.19	0.43
1:A:438:ASP:CG	1:A:441:THR:HG23	2.39	0.43
1:A:350:LYS:O	1:A:432:THR:HA	2.19	0.43
2:B:918:G:H2'	2:B:957:G:H22	1.83	0.43
1:A:456:ILE:HG22	1:A:520:ARG:NH2	2.34	0.42
2:B:949:G:H1	2:B:965:C:N4	2.17	0.42
1:A:438:ASP:HB3	1:A:441:THR:HG23	2.01	0.42
1:A:497:VAL:HG12	5:A:773:HOH:O	2.18	0.42
1:A:270:LYS:HB2	3:A:601:ATP:O3G	2.19	0.42

Continued on next page...

Continued from previous page...

Atom-1	Atom-2	Interatomic distance (Å)	Clash overlap (Å)
1:A:260:ARG:HG3	5:A:798:HOH:O	2.19	0.42
1:A:424:LYS:HD3	1:A:428:GLY:O	2.20	0.42
1:A:343:MET:CE	1:A:458:TRP:H	2.16	0.42
1:A:199:HIS:ND1	1:A:200:GLN:HG2	2.35	0.42
1:A:239:LEU:O	1:A:243:VAL:HG23	2.19	0.42
1:A:114:ILE:CG2	1:A:154:LEU:HD13	2.49	0.42
1:A:345:VAL:HA	5:A:731:HOH:O	2.20	0.41
1:A:19:LEU:HD12	1:A:19:LEU:HA	1.89	0.41
1:A:413:ASN:HA	5:A:736:HOH:O	2.20	0.41
1:A:535:LYS:HB3	1:A:535:LYS:HE2	1.87	0.41
1:A:148:ARG:HD2	1:A:153:ASN:ND2	2.35	0.41
2:B:957:G:H2'	2:B:958:A:H5'	2.02	0.41
1:A:107:HIS:HE1	5:A:838:HOH:O	2.04	0.41
1:A:353:ILE:HA	1:A:435:CYS:O	2.20	0.41
2:B:918:G:H2'	2:B:957:G:N2	2.36	0.41
1:A:229:CYS:O	1:A:257:GLU:HA	2.20	0.40
1:A:416:VAL:HG23	1:A:441:THR:HB	2.04	0.40
1:A:504:GLU:HG2	1:A:507:LEU:HD23	2.02	0.40
1:A:35:PRO:CB	1:A:78:VAL:HG12	2.50	0.40
1:A:51:PHE:O	1:A:55:GLN:HG2	2.21	0.40

There are no symmetry-related clashes.

5.3 Torsion angles [i](#)

5.3.1 Protein backbone [i](#)

In the following table, the Percentiles column shows the percent Ramachandran outliers of the chain as a percentile score with respect to all X-ray entries followed by that with respect to entries of similar resolution.

The Analysed column shows the number of residues for which the backbone conformation was analysed, and the total number of residues.

Mol	Chain	Analysed	Favoured	Allowed	Outliers	Percentiles
1	A	534/553 (97%)	507 (95%)	19 (4%)	8 (2%)	10 14

All (8) Ramachandran outliers are listed below:

Mol	Chain	Res	Type
1	A	32	PRO

Continued on next page...

Continued from previous page...

Mol	Chain	Res	Type
1	A	397	ASN
1	A	442	LEU
1	A	450	ARG
1	A	462	ALA
1	A	405	LEU
1	A	176	ILE
1	A	417	ILE

5.3.2 Protein sidechains [i](#)

In the following table, the Percentiles column shows the percent sidechain outliers of the chain as a percentile score with respect to all X-ray entries followed by that with respect to entries of similar resolution.

The Analysed column shows the number of residues for which the sidechain conformation was analysed, and the total number of residues.

Mol	Chain	Analysed	Rotameric	Outliers	Percentiles
1	A	453/481 (94%)	418 (92%)	35 (8%)	13 20

All (35) residues with a non-rotameric sidechain are listed below:

Mol	Chain	Res	Type
1	A	19	LEU
1	A	30	ARG
1	A	32	PRO
1	A	49	LEU
1	A	72	LYS
1	A	78	VAL
1	A	105	GLN
1	A	106	LEU
1	A	124	LEU
1	A	147	ASP
1	A	154	LEU
1	A	156	LEU
1	A	159	LYS
1	A	186	ARG
1	A	190	LEU
1	A	192	ARG
1	A	231	LEU
1	A	263	LEU
1	A	271	ARG

Continued on next page...

Continued from previous page...

Mol	Chain	Res	Type
1	A	318	GLN
1	A	327	LEU
1	A	335	LEU
1	A	341	ARG
1	A	378	GLN
1	A	389	ARG
1	A	402	ARG
1	A	412	ARG
1	A	427	GLU
1	A	432	THR
1	A	435	CYS
1	A	475	LEU
1	A	490	VAL
1	A	544	LEU
1	A	547	THR
1	A	548	TRP

Some sidechains can be flipped to improve hydrogen bonding and reduce clashes. All (10) such sidechains are listed below:

Mol	Chain	Res	Type
1	A	28	HIS
1	A	43	HIS
1	A	115	ASN
1	A	142	ASN
1	A	153	ASN
1	A	226	HIS
1	A	236	ASN
1	A	318	GLN
1	A	368	HIS
1	A	429	ASN

5.3.3 RNA [i](#)

Mol	Chain	Analysed	Backbone Outliers	Pucker Outliers
2	B	69/75 (92%)	6 (8%)	1 (1%)

All (6) RNA backbone outliers are listed below:

Mol	Chain	Res	Type
2	B	910	G

Continued on next page...

Continued from previous page...

Mol	Chain	Res	Type
2	B	918	G
2	B	920	U
2	B	921	A
2	B	936	G
2	B	937	A

All (1) RNA pucker outliers are listed below:

Mol	Chain	Res	Type
2	B	920	U

5.4 Non-standard residues in protein, DNA, RNA chains [i](#)

There are no non-standard protein/DNA/RNA residues in this entry.

5.5 Carbohydrates [i](#)

There are no carbohydrates in this entry.

5.6 Ligand geometry [i](#)

3 ligands are modelled in this entry.

In the following table, the Counts columns list the number of bonds (or angles) for which Mogul statistics could be retrieved, the number of bonds (or angles) that are observed in the model and the number of bonds (or angles) that are defined in the Chemical Component Dictionary. The Link column lists molecule types, if any, to which the group is linked. The Z score for a bond length (or angle) is the number of standard deviations the observed value is removed from the expected value. A bond length (or angle) with $|Z| > 2$ is considered an outlier worth inspection. RMSZ is the root-mean-square of all Z scores of the bond lengths (or angles).

Mol	Type	Chain	Res	Link	Bond lengths			Bond angles		
					Counts	RMSZ	$\# Z > 2$	Counts	RMSZ	$\# Z > 2$
4	SO4	A	602	-	4,4,4	0.30	0	6,6,6	0.07	0
4	SO4	A	603	-	4,4,4	0.31	0	6,6,6	0.05	0
3	ATP	A	601	-	26,33,33	1.69	5 (19%)	31,52,52	1.78	4 (12%)

In the following table, the Chirals column lists the number of chiral outliers, the number of chiral centers analysed, the number of these observed in the model and the number defined in the Chemical Component Dictionary. Similar counts are reported in the Torsion and Rings columns. '-' means no outliers of that kind were identified.

Mol	Type	Chain	Res	Link	Chirals	Torsions	Rings
3	ATP	A	601	-	-	5/18/38/38	0/3/3/3

All (5) bond length outliers are listed below:

Mol	Chain	Res	Type	Atoms	Z	Observed(Å)	Ideal(Å)
3	A	601	ATP	C2-N3	5.21	1.40	1.32
3	A	601	ATP	C2-N1	3.27	1.40	1.33
3	A	601	ATP	C6-C5	-2.80	1.32	1.43
3	A	601	ATP	C5-C4	-2.60	1.34	1.40
3	A	601	ATP	O4'-C1'	2.18	1.44	1.41

All (4) bond angle outliers are listed below:

Mol	Chain	Res	Type	Atoms	Z	Observed(°)	Ideal(°)
3	A	601	ATP	N3-C2-N1	-6.78	118.08	128.68
3	A	601	ATP	PB-O3B-PG	-3.52	120.75	132.83
3	A	601	ATP	PA-O3A-PB	-3.27	121.60	132.83
3	A	601	ATP	C5-C6-N6	-2.18	117.04	120.35

There are no chirality outliers.

All (5) torsion outliers are listed below:

Mol	Chain	Res	Type	Atoms
3	A	601	ATP	C5'-O5'-PA-O3A
3	A	601	ATP	C5'-O5'-PA-O1A
3	A	601	ATP	PG-O3B-PB-O1B
3	A	601	ATP	PG-O3B-PB-O2B
3	A	601	ATP	PA-O3A-PB-O2B

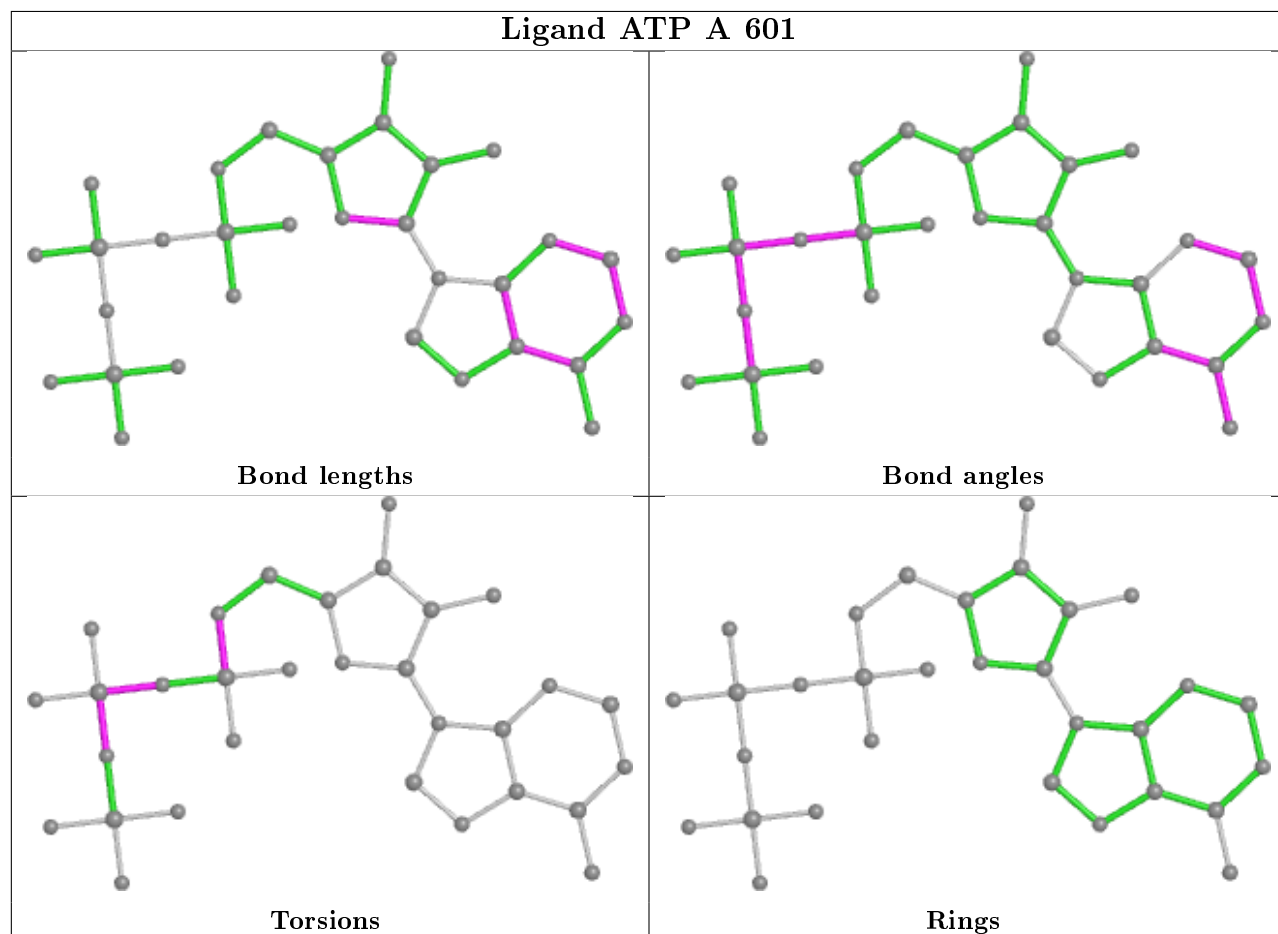
There are no ring outliers.

1 monomer is involved in 2 short contacts:

Mol	Chain	Res	Type	Clashes	Symm-Clashes
3	A	601	ATP	2	0

The following is a two-dimensional graphical depiction of Mogul quality analysis of bond lengths, bond angles, torsion angles, and ring geometry for all instances of the Ligand of Interest. In addition, ligands with molecular weight > 250 and outliers as shown on the validation Tables will also be included. For torsion angles, if less than 5% of the Mogul distribution of torsion angles is within 10 degrees of the torsion angle in question, then that torsion angle is considered an outlier. Any bond that is central to one or more torsion angles identified as an outlier by Mogul will be highlighted in the graph. For rings, the root-mean-square deviation (RMSD) between the ring

in question and similar rings identified by Mogul is calculated over all ring torsion angles. If the average RMSD is greater than 60 degrees and the minimal RMSD between the ring in question and any Mogul-identified rings is also greater than 60 degrees, then that ring is considered an outlier. The outliers are highlighted in purple. The color gray indicates Mogul did not find sufficient equivalents in the CSD to analyse the geometry.



5.7 Other polymers [i](#)

There are no such residues in this entry.

5.8 Polymer linkage issues [i](#)

There are no chain breaks in this entry.

6 Fit of model and data

6.1 Protein, DNA and RNA chains

In the following table, the column labelled ‘#RSRZ> 2’ contains the number (and percentage) of RSRZ outliers, followed by percent RSRZ outliers for the chain as percentile scores relative to all X-ray entries and entries of similar resolution. The OWAB column contains the minimum, median, 95th percentile and maximum values of the occupancy-weighted average B-factor per residue. The column labelled ‘Q< 0.9’ lists the number of (and percentage) of residues with an average occupancy less than 0.9.

Mol	Chain	Analysed	<RSRZ>	#RSRZ>2	OWAB(Å ²)	Q<0.9
1	A	538/553 (97%)	0.58	42 (7%) 13 11	28, 46, 83, 98	0
2	B	71/75 (94%)	0.65	9 (12%) 3 3	38, 68, 102, 114	0
All	All	609/628 (96%)	0.59	51 (8%) 11 10	28, 48, 86, 114	0

All (51) RSRZ outliers are listed below:

Mol	Chain	Res	Type	RSRZ
1	A	426	ALA	12.2
1	A	452	VAL	5.3
1	A	419	ALA	5.0
1	A	399	GLN	4.8
2	B	909	C	4.5
1	A	443	SER	4.4
1	A	427	GLU	4.4
2	B	920	U	4.3
1	A	441	THR	4.2
1	A	439	ALA	4.2
1	A	454	GLY	4.0
2	B	944	C	3.9
1	A	414	ALA	3.9
1	A	437	TYR	3.8
1	A	415	TYR	3.7
1	A	138	GLN	3.5
1	A	372	PRO	3.5
1	A	408	GLU	3.1
1	A	354	GLU	3.1
1	A	392	PHE	3.0
1	A	450	ARG	3.0
1	A	417	ILE	2.8
1	A	532	THR	2.8
2	B	921	A	2.8

Continued on next page...

Continued from previous page...

Mol	Chain	Res	Type	RSRZ
1	A	431	THR	2.8
1	A	425	ASP	2.6
2	B	929	G	2.6
1	A	483	ALA	2.5
1	A	420	GLU	2.5
1	A	403	LEU	2.5
2	B	951	A	2.5
1	A	409	VAL	2.4
1	A	383	GLY	2.3
1	A	381	PHE	2.3
1	A	459	VAL	2.3
2	B	954	U	2.3
1	A	418	LYS	2.3
1	A	429	ASN	2.2
1	A	243	VAL	2.2
1	A	247	ILE	2.2
1	A	410	ARG	2.2
1	A	421	ARG	2.1
2	B	918	G	2.1
2	B	932	U	2.1
1	A	356	TYR	2.1
1	A	535	LYS	2.1
1	A	422	VAL	2.0
1	A	330	CYS	2.0
1	A	389	ARG	2.0
1	A	244	LEU	2.0
1	A	444	LYS	2.0

6.2 Non-standard residues in protein, DNA, RNA chains [i](#)

There are no non-standard protein/DNA/RNA residues in this entry.

6.3 Carbohydrates [i](#)

There are no carbohydrates in this entry.

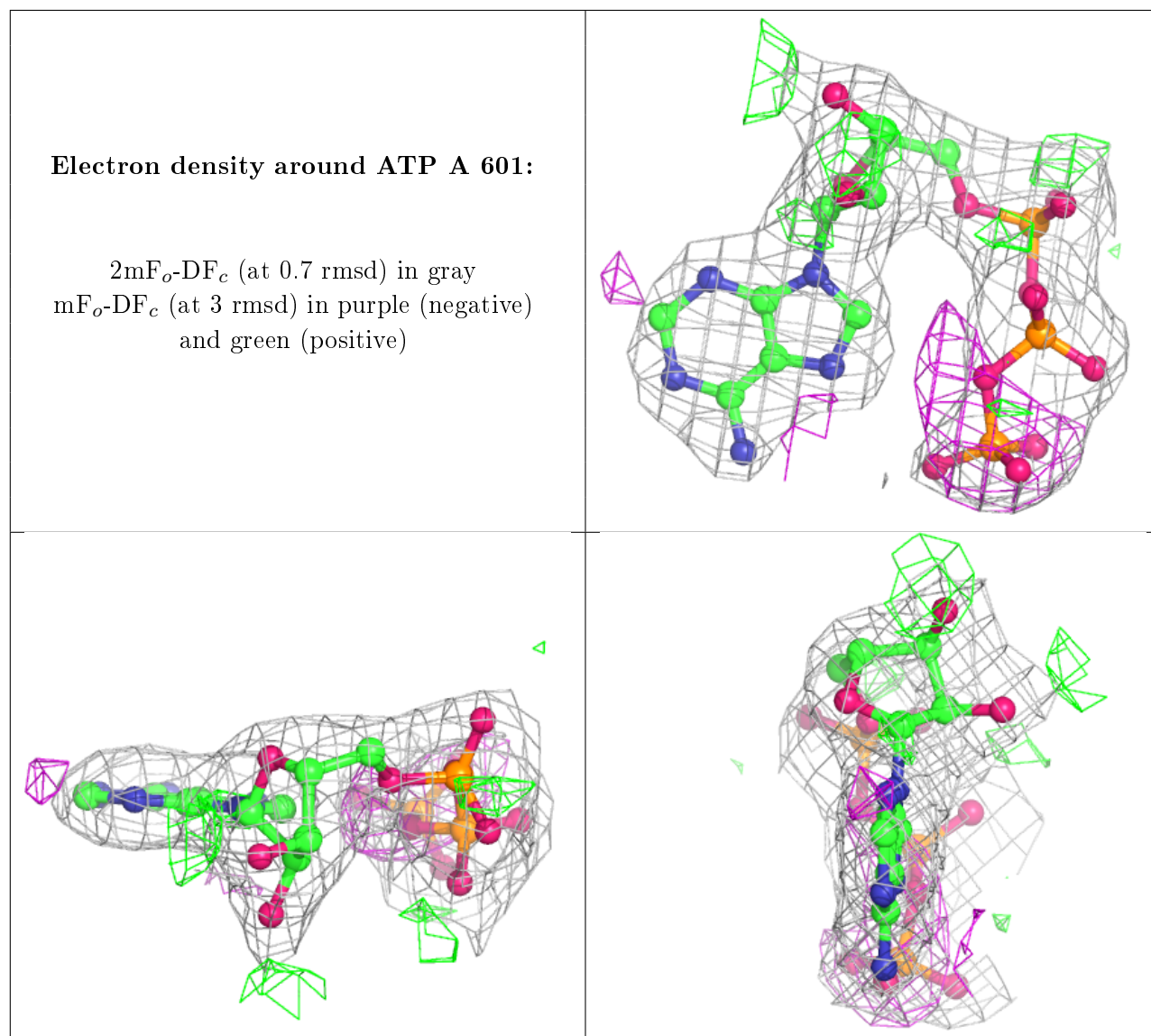
6.4 Ligands [i](#)

In the following table, the Atoms column lists the number of modelled atoms in the group and the number defined in the chemical component dictionary. The B-factors column lists the minimum,

median, 95th percentile and maximum values of B factors of atoms in the group. The column labelled 'Q< 0.9' lists the number of atoms with occupancy less than 0.9.

Mol	Type	Chain	Res	Atoms	RSCC	RSR	B-factors(Å ²)	Q<0.9
4	SO4	A	603	5/5	0.64	0.41	132,132,133,133	0
4	SO4	A	602	5/5	0.90	0.20	112,113,113,113	0
3	ATP	A	601	31/31	0.93	0.21	36,42,75,78	0

The following is a graphical depiction of the model fit to experimental electron density of all instances of the Ligand of Interest. In addition, ligands with molecular weight > 250 and outliers as shown on the geometry validation Tables will also be included. Each fit is shown from different orientation to approximate a three-dimensional view.



6.5 Other polymers

There are no such residues in this entry.