



# Full wwPDB X-ray Structure Validation Report ⓘ

Nov 21, 2023 – 05:50 PM JST

PDB ID : 6JP9  
Title : Crsytal structure of a XMP complexed ATPase subunit of M. jannaschii  
GMP synthetase  
Authors : Shivakumarasamy, S.; Balaram, H.  
Deposited on : 2019-03-26  
Resolution : 2.10 Å(reported)

This is a Full wwPDB X-ray Structure Validation Report for a publicly released PDB entry.

We welcome your comments at [validation@mail.wwpdb.org](mailto:validation@mail.wwpdb.org)

A user guide is available at

<https://www.wwpdb.org/validation/2017/XrayValidationReportHelp>

with specific help available everywhere you see the ⓘ symbol.

The types of validation reports are described at

<http://www.wwpdb.org/validation/2017/FAQs#types>.

---

The following versions of software and data (see [references ⓘ](#)) were used in the production of this report:

MolProbity : 4.02b-467  
Mogul : 1.8.5 (274361), CSD as541be (2020)  
Xtrriage (Phenix) : 1.13  
EDS : 2.36  
buster-report : 1.1.7 (2018)  
Percentile statistics : 20191225.v01 (using entries in the PDB archive December 25th 2019)  
Refmac : 5.8.0158  
CCP4 : 7.0.044 (Gargrove)  
Ideal geometry (proteins) : Engh & Huber (2001)  
Ideal geometry (DNA, RNA) : Parkinson et al. (1996)  
Validation Pipeline (wwPDB-VP) : 2.36

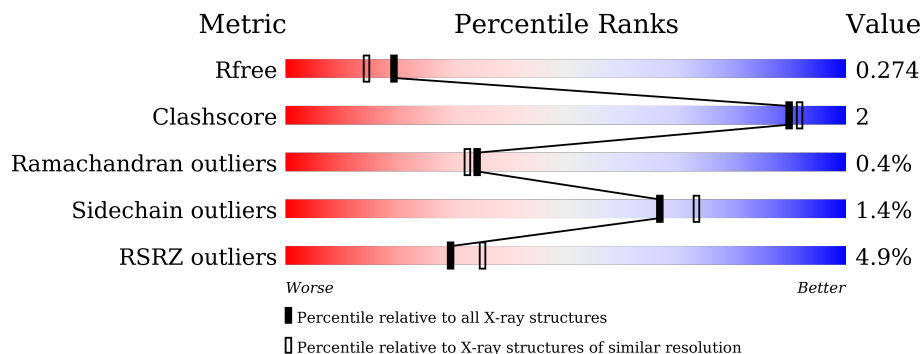
# 1 Overall quality at a glance

The following experimental techniques were used to determine the structure:

*X-RAY DIFFRACTION*

The reported resolution of this entry is 2.10 Å.

Percentile scores (ranging between 0-100) for global validation metrics of the entry are shown in the following graphic. The table shows the number of entries on which the scores are based.



Metric	Whole archive (#Entries)	Similar resolution (#Entries, resolution range(Å))
$R_{free}$	130704	5197 (2.10-2.10)
Clashscore	141614	5710 (2.10-2.10)
Ramachandran outliers	138981	5647 (2.10-2.10)
Sidechain outliers	138945	5648 (2.10-2.10)
RSRZ outliers	127900	5083 (2.10-2.10)

The table below summarises the geometric issues observed across the polymeric chains and their fit to the electron density. The red, orange, yellow and green segments of the lower bar indicate the fraction of residues that contain outliers for  $\geq 3$ , 2, 1 and 0 types of geometric quality criteria respectively. A grey segment represents the fraction of residues that are not modelled. The numeric value for each fraction is indicated below the corresponding segment, with a dot representing fractions  $\leq 5\%$ . The upper red bar (where present) indicates the fraction of residues that have poor fit to the electron density. The numeric value is given above the bar.

Mol	Chain	Length	Quality of chain
1	A	310	 91% 5% 5%
1	B	310	 89% 5% 5%
1	C	310	 83% 5% 12%
1	D	310	 91% 5%

## 2 Entry composition [i](#)

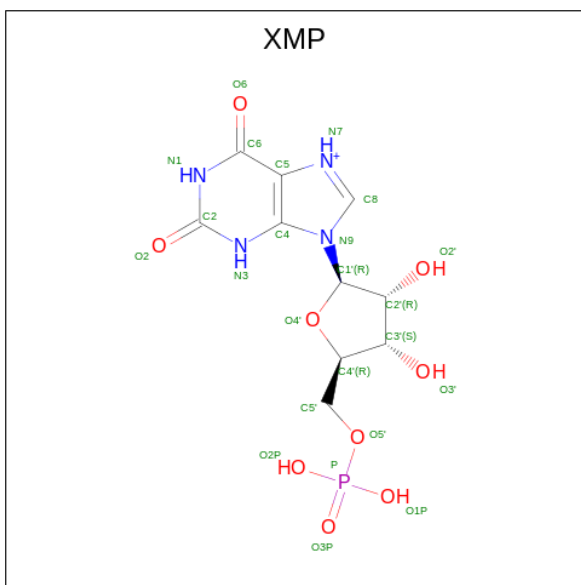
There are 5 unique types of molecules in this entry. The entry contains 9170 atoms, of which 0 are hydrogens and 0 are deuteriums.

In the tables below, the ZeroOcc column contains the number of atoms modelled with zero occupancy, the AltConf column contains the number of residues with at least one atom in alternate conformation and the Trace column contains the number of residues modelled with at most 2 atoms.

- Molecule 1 is a protein called GMP synthase [glutamine-hydrolyzing] subunit B.

Mol	Chain	Residues	Atoms					ZeroOcc	AltConf	Trace
			Total	C	N	O	S			
1	A	298	Total 2262	C 1458	N 376	O 422	S 6	0	0	0
1	B	296	Total 2292	C 1475	N 380	O 431	S 6	0	0	0
1	C	274	Total 1895	C 1197	N 334	O 359	S 5	0	0	0
1	D	298	Total 2298	C 1481	N 380	O 431	S 6	0	0	0

- Molecule 2 is XANTHOSINE-5'-MONOPHOSPHATE (three-letter code: XMP) (formula: C<sub>10</sub>H<sub>14</sub>N<sub>4</sub>O<sub>9</sub>P) (labeled as "Ligand of Interest" by depositor).



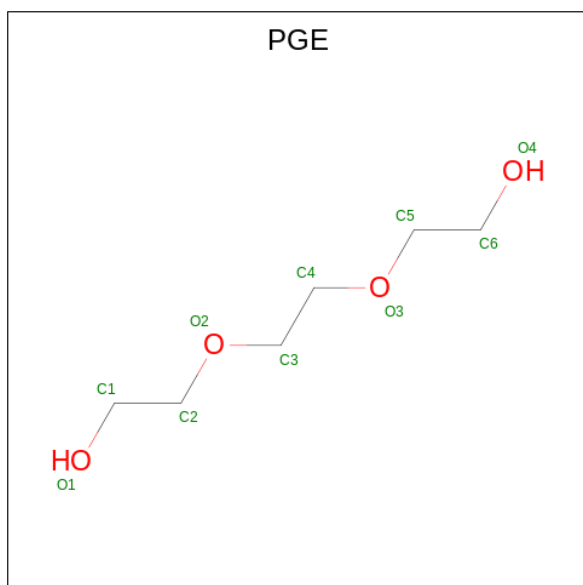
Mol	Chain	Residues	Atoms					ZeroOcc	AltConf
			Total	C	N	O	P		
2	A	1	Total 24	C 10	N 4	O 9	P 1	0	0
2	B	1	Total 24	C 10	N 4	O 9	P 1	0	0

*Continued on next page...*

Continued from previous page...

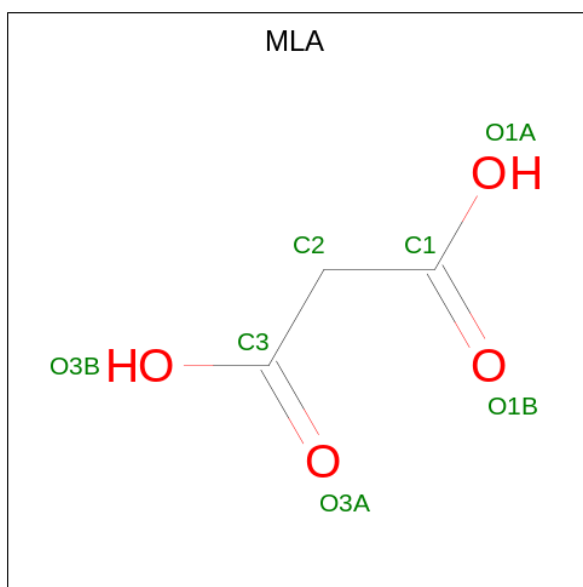
Mol	Chain	Residues	Atoms					ZeroOcc	AltConf
2	C	1	Total	C	N	O	P	0	0
			24	10	4	9	1		
2	D	1	Total	C	N	O	P	0	0
			24	10	4	9	1		

- Molecule 3 is TRIETHYLENE GLYCOL (three-letter code: PGE) (formula:  $C_6H_{14}O_4$ ).



Mol	Chain	Residues	Atoms			ZeroOcc	AltConf
3	D	1	Total	C	O	0	0
			10	6	4		

- Molecule 4 is MALONIC ACID (three-letter code: MLA) (formula:  $C_3H_4O_4$ ).



Mol	Chain	Residues	Atoms	ZeroOcc	AltConf
4	D	1	Total C O 7 3 4	0	0

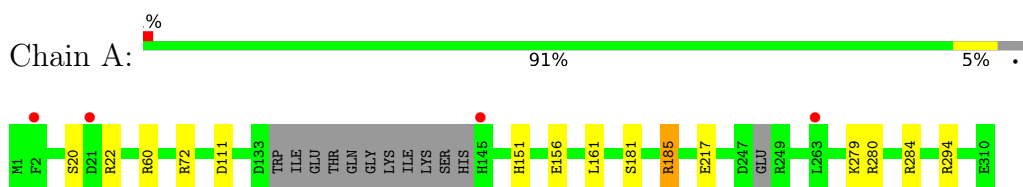
- Molecule 5 is water.

Mol	Chain	Residues	Atoms	ZeroOcc	AltConf
5	A	71	Total O 71 71	0	0
5	B	96	Total O 96 96	0	0
5	C	40	Total O 40 40	0	0
5	D	103	Total O 103 103	0	0

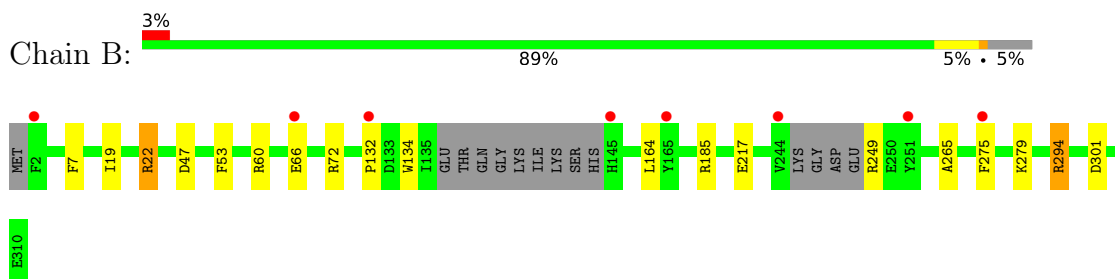
### 3 Residue-property plots [i](#)

These plots are drawn for all protein, RNA, DNA and oligosaccharide chains in the entry. The first graphic for a chain summarises the proportions of the various outlier classes displayed in the second graphic. The second graphic shows the sequence view annotated by issues in geometry and electron density. Residues are color-coded according to the number of geometric quality criteria for which they contain at least one outlier: green = 0, yellow = 1, orange = 2 and red = 3 or more. A red dot above a residue indicates a poor fit to the electron density ( $RSRZ > 2$ ). Stretches of 2 or more consecutive residues without any outlier are shown as a green connector. Residues present in the sample, but not in the model, are shown in grey.

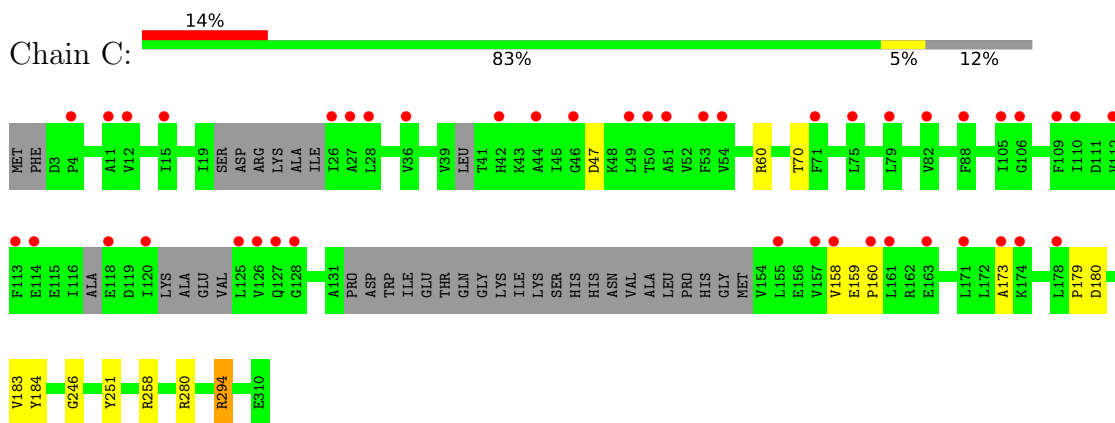
- Molecule 1: GMP synthase [glutamine-hydrolyzing] subunit B



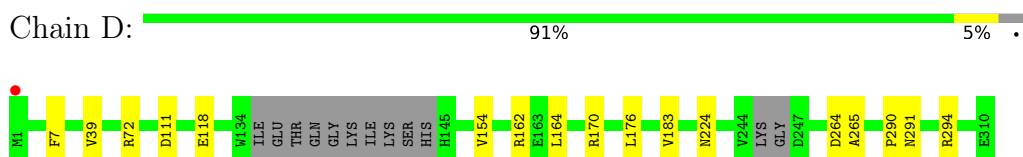
- Molecule 1: GMP synthase [glutamine-hydrolyzing] subunit B



- Molecule 1: GMP synthase [glutamine-hydrolyzing] subunit B



- Molecule 1: GMP synthase [glutamine-hydrolyzing] subunit B



## 4 Data and refinement statistics

Property	Value	Source
Space group	P 21 21 21	Depositor
Cell constants a, b, c, $\alpha$ , $\beta$ , $\gamma$	82.18Å 100.43Å 157.59Å 90.00° 90.00° 90.00°	Depositor
Resolution (Å)	52.53 – 2.10 50.21 – 2.10	Depositor EDS
% Data completeness (in resolution range)	99.8 (52.53-2.10) 99.8 (50.21-2.10)	Depositor EDS
$R_{merge}$	(Not available)	Depositor
$R_{sym}$	(Not available)	Depositor
$\langle I/\sigma(I) \rangle$ <sup>1</sup>	1.77 (at 2.10Å)	Xtrriage
Refinement program	REFMAC 5.8.0158	Depositor
R, $R_{free}$	0.221 , 0.273 0.228 , 0.274	Depositor DCC
$R_{free}$ test set	3815 reflections (4.98%)	wwPDB-VP
Wilson B-factor (Å <sup>2</sup> )	36.7	Xtrriage
Anisotropy	0.291	Xtrriage
Bulk solvent $k_{sol}$ (e/Å <sup>3</sup> ), $B_{sol}$ (Å <sup>2</sup> )	0.33 , 46.2	EDS
L-test for twinning <sup>2</sup>	$\langle  L  \rangle = 0.50$ , $\langle L^2 \rangle = 0.33$	Xtrriage
Estimated twinning fraction	No twinning to report.	Xtrriage
$F_o, F_c$ correlation	0.95	EDS
Total number of atoms	9170	wwPDB-VP
Average B, all atoms (Å <sup>2</sup> )	46.0	wwPDB-VP

Xtrriage's analysis on translational NCS is as follows: *The largest off-origin peak in the Patterson function is 3.68% of the height of the origin peak. No significant pseudotranslation is detected.*

<sup>1</sup>Intensities estimated from amplitudes.

<sup>2</sup>Theoretical values of  $\langle |L| \rangle$ ,  $\langle L^2 \rangle$  for acentric reflections are 0.5, 0.333 respectively for untwinned datasets, and 0.375, 0.2 for perfectly twinned datasets.

## 5 Model quality i

### 5.1 Standard geometry i

Bond lengths and bond angles in the following residue types are not validated in this section: PGE, MLA, XMP

The Z score for a bond length (or angle) is the number of standard deviations the observed value is removed from the expected value. A bond length (or angle) with  $|Z| > 5$  is considered an outlier worth inspection. RMSZ is the root-mean-square of all Z scores of the bond lengths (or angles).

Mol	Chain	Bond lengths		Bond angles	
		RMSZ	# $ Z  > 5$	RMSZ	# $ Z  > 5$
1	A	0.79	0/2296	0.93	7/3115 (0.2%)
1	B	0.84	2/2329 (0.1%)	0.90	3/3158 (0.1%)
1	C	0.75	0/1918	0.85	3/2608 (0.1%)
1	D	0.83	0/2333	0.90	4/3160 (0.1%)
All	All	0.81	2/8876 (0.0%)	0.90	17/12041 (0.1%)

All (2) bond length outliers are listed below:

Mol	Chain	Res	Type	Atoms	Z	Observed(Å)	Ideal(Å)
1	B	53	PHE	C-N	-7.27	1.17	1.34
1	B	217	GLU	CD-OE2	5.19	1.31	1.25

All (17) bond angle outliers are listed below:

Mol	Chain	Res	Type	Atoms	Z	Observed(°)	Ideal(°)
1	D	294	ARG	NE-CZ-NH1	10.30	125.45	120.30
1	D	294	ARG	NE-CZ-NH2	-7.54	116.53	120.30
1	A	284	ARG	NE-CZ-NH2	-6.82	116.89	120.30
1	C	258	ARG	NE-CZ-NH2	-6.69	116.95	120.30
1	A	284	ARG	NE-CZ-NH1	6.50	123.55	120.30
1	C	294	ARG	NE-CZ-NH2	-6.35	117.12	120.30
1	A	111	ASP	CB-CG-OD1	6.21	123.89	118.30
1	C	258	ARG	NE-CZ-NH1	6.07	123.33	120.30
1	A	294	ARG	NE-CZ-NH1	5.88	123.24	120.30
1	B	22	ARG	NE-CZ-NH1	5.73	123.17	120.30
1	A	294	ARG	NE-CZ-NH2	-5.69	117.46	120.30
1	B	72	ARG	NE-CZ-NH1	5.36	122.98	120.30
1	D	72	ARG	NE-CZ-NH1	5.35	122.97	120.30
1	A	60	ARG	NE-CZ-NH1	-5.29	117.65	120.30
1	A	280	ARG	NE-CZ-NH1	5.13	122.86	120.30

*Continued on next page...*



Continued from previous page...

Mol	Chain	Res	Type	Atoms	Z	Observed(°)	Ideal(°)
1	B	294	ARG	NE-CZ-NH1	-5.12	117.74	120.30
1	D	111	ASP	CB-CG-OD2	-5.09	113.72	118.30

There are no chirality outliers.

There are no planarity outliers.

## 5.2 Too-close contacts

In the following table, the Non-H and H(model) columns list the number of non-hydrogen atoms and hydrogen atoms in the chain respectively. The H(added) column lists the number of hydrogen atoms added and optimized by MolProbity. The Clashes column lists the number of clashes within the asymmetric unit, whereas Symm-Clashes lists symmetry-related clashes.

Mol	Chain	Non-H	H(model)	H(added)	Clashes	Symm-Clashes
1	A	2262	0	2255	9	0
1	B	2292	0	2296	12	0
1	C	1895	0	1664	6	0
1	D	2298	0	2320	6	0
2	A	24	0	12	0	0
2	B	24	0	12	1	0
2	C	24	0	12	0	0
2	D	24	0	12	0	0
3	D	10	0	14	0	0
4	D	7	0	2	0	0
5	A	71	0	0	4	0
5	B	96	0	0	2	0
5	C	40	0	0	1	0
5	D	103	0	0	1	0
All	All	9170	0	8599	32	0

The all-atom clashscore is defined as the number of clashes found per 1000 atoms (including hydrogen atoms). The all-atom clashscore for this structure is 2.

All (32) close contacts within the same asymmetric unit are listed below, sorted by their clash magnitude.

Atom-1	Atom-2	Interatomic distance (Å)	Clash overlap (Å)
1:B:66:GLU:OE1	1:B:185:ARG:NH2	1.96	0.98
1:B:66:GLU:CD	1:B:185:ARG:HH22	1.73	0.90
1:A:181:SER:O	1:A:185:ARG:HG3	1.81	0.81
1:A:279:LYS:HD2	5:A:561:HOH:O	1.94	0.67

Continued on next page...

Continued from previous page...

Atom-1	Atom-2	Interatomic distance (Å)	Clash overlap (Å)
1:B:132:PRO:O	5:B:501:HOH:O	2.15	0.63
1:D:170:ARG:NH1	1:D:183:VAL:O	2.34	0.61
1:B:66:GLU:CD	1:B:185:ARG:NH2	2.43	0.61
1:A:22:ARG:NH1	1:A:156:GLU:OE1	2.34	0.59
1:D:7:PHE:CZ	1:D:164:LEU:HD11	2.42	0.54
1:C:280:ARG:NH1	5:C:502:HOH:O	2.36	0.53
1:A:22:ARG:NH2	1:A:156:GLU:OE1	2.39	0.52
1:C:173:ALA:HB1	1:C:183:VAL:HG12	1.93	0.50
1:A:151:HIS:CE1	5:A:554:HOH:O	2.66	0.48
1:A:151:HIS:HE1	5:A:554:HOH:O	1.97	0.48
1:A:279:LYS:NZ	1:B:301:ASP:OD1	2.46	0.48
1:D:264:ASP:O	1:D:265:ALA:HB3	2.15	0.47
1:C:180:ASP:HA	1:C:183:VAL:HG22	1.96	0.47
1:B:7:PHE:CZ	1:B:164:LEU:HD11	2.51	0.46
1:B:265:ALA:CB	2:B:401:XMP:H4'	2.46	0.46
1:B:19:ILE:O	1:B:22:ARG:HD3	2.17	0.44
1:B:275:PHE:CZ	1:B:279:LYS:HE2	2.53	0.43
1:C:183:VAL:HG23	1:C:184:TYR:CD2	2.54	0.43
1:B:60:ARG:HG2	5:B:553:HOH:O	2.18	0.43
1:B:275:PHE:O	1:B:279:LYS:HG2	2.19	0.43
1:B:66:GLU:OE2	1:B:185:ARG:NH2	2.21	0.42
1:A:72:ARG:HD3	5:A:555:HOH:O	2.18	0.42
1:A:181:SER:O	1:A:185:ARG:CG	2.59	0.41
1:D:290:PRO:O	1:D:291:ASN:HB2	2.20	0.41
1:C:70:THR:HG21	1:C:179:PRO:HG3	2.03	0.40
1:D:39:VAL:HG11	1:D:176:LEU:HB3	2.02	0.40
1:C:158:VAL:O	1:C:160:PRO:HD3	2.20	0.40
1:D:224:ASN:OD1	5:D:501:HOH:O	2.22	0.40

There are no symmetry-related clashes.

## 5.3 Torsion angles [\(i\)](#)

### 5.3.1 Protein backbone [\(i\)](#)

In the following table, the Percentiles column shows the percent Ramachandran outliers of the chain as a percentile score with respect to all X-ray entries followed by that with respect to entries of similar resolution.

The Analysed column shows the number of residues for which the backbone conformation was analysed, and the total number of residues.

Mol	Chain	Analysed	Favoured	Allowed	Outliers	Percentiles	
1	A	292/310 (94%)	283 (97%)	8 (3%)	1 (0%)	41	41
1	B	290/310 (94%)	276 (95%)	14 (5%)	0	100	100
1	C	262/310 (84%)	238 (91%)	21 (8%)	3 (1%)	14	9
1	D	292/310 (94%)	282 (97%)	9 (3%)	1 (0%)	41	41
All	All	1136/1240 (92%)	1079 (95%)	52 (5%)	5 (0%)	34	32

All (5) Ramachandran outliers are listed below:

Mol	Chain	Res	Type
1	A	20	SER
1	D	162	ARG
1	C	47	ASP
1	C	159	GLU
1	C	246	GLY

### 5.3.2 Protein sidechains [i](#)

In the following table, the Percentiles column shows the percent sidechain outliers of the chain as a percentile score with respect to all X-ray entries followed by that with respect to entries of similar resolution.

The Analysed column shows the number of residues for which the sidechain conformation was analysed, and the total number of residues.

Mol	Chain	Analysed	Rotameric	Outliers	Percentiles	
1	A	228/268 (85%)	225 (99%)	3 (1%)	69	75
1	B	239/268 (89%)	235 (98%)	4 (2%)	60	67
1	C	155/268 (58%)	152 (98%)	3 (2%)	57	63
1	D	239/268 (89%)	237 (99%)	2 (1%)	81	86
All	All	861/1072 (80%)	849 (99%)	12 (1%)	67	73

All (12) residues with a non-rotameric sidechain are listed below:

Mol	Chain	Res	Type
1	A	161	LEU
1	A	185	ARG
1	A	217	GLU
1	B	47	ASP
1	B	134	TRP
1	B	249	ARG

*Continued on next page...*

*Continued from previous page...*

Mol	Chain	Res	Type
1	B	294	ARG
1	C	60	ARG
1	C	251	TYR
1	C	294	ARG
1	D	118	GLU
1	D	154	VAL

Sometimes sidechains can be flipped to improve hydrogen bonding and reduce clashes. All (2) such sidechains are listed below:

Mol	Chain	Res	Type
1	A	78	ASN
1	D	224	ASN

### 5.3.3 RNA [i](#)

There are no RNA molecules in this entry.

## 5.4 Non-standard residues in protein, DNA, RNA chains [i](#)

There are no non-standard protein/DNA/RNA residues in this entry.

## 5.5 Carbohydrates [i](#)

There are no monosaccharides in this entry.

## 5.6 Ligand geometry [i](#)

6 ligands are modelled in this entry.

In the following table, the Counts columns list the number of bonds (or angles) for which Mogul statistics could be retrieved, the number of bonds (or angles) that are observed in the model and the number of bonds (or angles) that are defined in the Chemical Component Dictionary. The Link column lists molecule types, if any, to which the group is linked. The Z score for a bond length (or angle) is the number of standard deviations the observed value is removed from the expected value. A bond length (or angle) with  $|Z| > 2$  is considered an outlier worth inspection. RMSZ is the root-mean-square of all Z scores of the bond lengths (or angles).

Mol	Type	Chain	Res	Link	Bond lengths			Bond angles		
					Counts	RMSZ	$\# Z  > 2$	Counts	RMSZ	$\# Z  > 2$
2	XMP	A	401	-	20,26,26	1.31	3 (15%)	27,40,40	3.34	7 (25%)

Mol	Type	Chain	Res	Link	Bond lengths			Bond angles		
					Counts	RMSZ	# Z  > 2	Counts	RMSZ	# Z  > 2
2	XMP	C	401	-	20,26,26	0.84	0	27,40,40	2.85	10 (37%)
2	XMP	D	401	-	20,26,26	1.23	2 (10%)	27,40,40	3.72	8 (29%)
3	PGE	D	402	-	9,9,9	0.67	0	8,8,8	0.68	0
4	MLA	D	403	-	6,6,6	1.59	1 (16%)	7,7,7	1.22	1 (14%)
2	XMP	B	401	-	20,26,26	1.05	1 (5%)	27,40,40	3.60	9 (33%)

In the following table, the Chirals column lists the number of chiral outliers, the number of chiral centers analysed, the number of these observed in the model and the number defined in the Chemical Component Dictionary. Similar counts are reported in the Torsion and Rings columns. '-' means no outliers of that kind were identified.

Mol	Type	Chain	Res	Link	Chirals	Torsions	Rings
2	XMP	A	401	-	-	3/6/26/26	0/3/3/3
2	XMP	C	401	-	-	1/6/26/26	0/3/3/3
2	XMP	D	401	-	-	0/6/26/26	0/3/3/3
3	PGE	D	402	-	-	5/7/7/7	-
4	MLA	D	403	-	-	1/4/4/4	-
2	XMP	B	401	-	-	0/6/26/26	0/3/3/3

All (7) bond length outliers are listed below:

Mol	Chain	Res	Type	Atoms	Z	Observed(Å)	Ideal(Å)
2	D	401	XMP	O6-C6	3.89	1.31	1.23
4	D	403	MLA	O1B-C1	3.01	1.32	1.22
2	A	401	XMP	O4'-C1'	3.00	1.45	1.41
2	B	401	XMP	C6-N1	-2.65	1.33	1.37
2	A	401	XMP	O6-C6	2.51	1.28	1.23
2	A	401	XMP	C2-N3	-2.17	1.32	1.36
2	D	401	XMP	C6-N1	-2.17	1.34	1.37

All (35) bond angle outliers are listed below:

Mol	Chain	Res	Type	Atoms	Z	Observed(°)	Ideal(°)
2	B	401	XMP	N3-C2-N1	14.60	124.38	115.90
2	D	401	XMP	N3-C2-N1	14.36	124.25	115.90
2	A	401	XMP	N3-C2-N1	13.77	123.90	115.90
2	C	401	XMP	N3-C2-N1	8.96	121.11	115.90
2	D	401	XMP	C6-N1-C2	-6.44	121.80	126.88
2	C	401	XMP	C6-N1-C2	-5.99	122.16	126.88
2	B	401	XMP	C4-N3-C2	-5.88	118.91	128.11
2	D	401	XMP	O2-C2-N3	-5.50	114.14	122.08

Continued on next page...

Continued from previous page...

Mol	Chain	Res	Type	Atoms	Z	Observed(°)	Ideal(°)
2	A	401	XMP	C6-N1-C2	-5.25	122.74	126.88
2	D	401	XMP	C4-N3-C2	-5.23	119.93	128.11
2	A	401	XMP	C4-N3-C2	-5.00	120.30	128.11
2	A	401	XMP	O2-C2-N3	-4.80	115.15	122.08
2	B	401	XMP	O6-C6-N1	4.80	126.31	120.65
2	D	401	XMP	C8-N7-C5	4.69	111.93	102.99
2	C	401	XMP	O2P-P-O5'	-4.60	94.50	106.73
2	B	401	XMP	C6-N1-C2	-4.44	123.37	126.88
2	D	401	XMP	O6-C6-N1	4.31	125.74	120.65
2	C	401	XMP	C4-N3-C2	-4.17	121.59	128.11
2	B	401	XMP	O2-C2-N3	-3.52	117.00	122.08
2	A	401	XMP	C8-N7-C5	3.42	109.51	102.99
2	C	401	XMP	O2-C2-N3	-3.26	117.38	122.08
2	C	401	XMP	O6-C6-C5	-3.13	118.26	124.37
2	B	401	XMP	C8-N7-C5	2.97	108.64	102.99
2	C	401	XMP	C5-C6-N1	2.94	119.14	113.95
2	B	401	XMP	O2P-P-O1P	2.86	118.56	107.64
2	A	401	XMP	P-O5'-C5'	2.79	125.98	118.30
2	B	401	XMP	O6-C6-C5	-2.77	118.95	124.37
2	B	401	XMP	O2'-C2'-C3'	2.60	120.22	111.82
2	C	401	XMP	O2'-C2'-C3'	2.52	119.97	111.82
2	C	401	XMP	C8-N7-C5	2.34	107.46	102.99
2	D	401	XMP	O5'-P-O3P	2.31	112.96	106.47
2	C	401	XMP	P-O5'-C5'	2.28	124.58	118.30
4	D	403	MLA	O1A-C1-O1B	2.10	128.54	123.30
2	D	401	XMP	O2'-C2'-C3'	2.04	118.43	111.82
2	A	401	XMP	C3'-C2'-C1'	2.01	104.01	100.98

There are no chirality outliers.

All (10) torsion outliers are listed below:

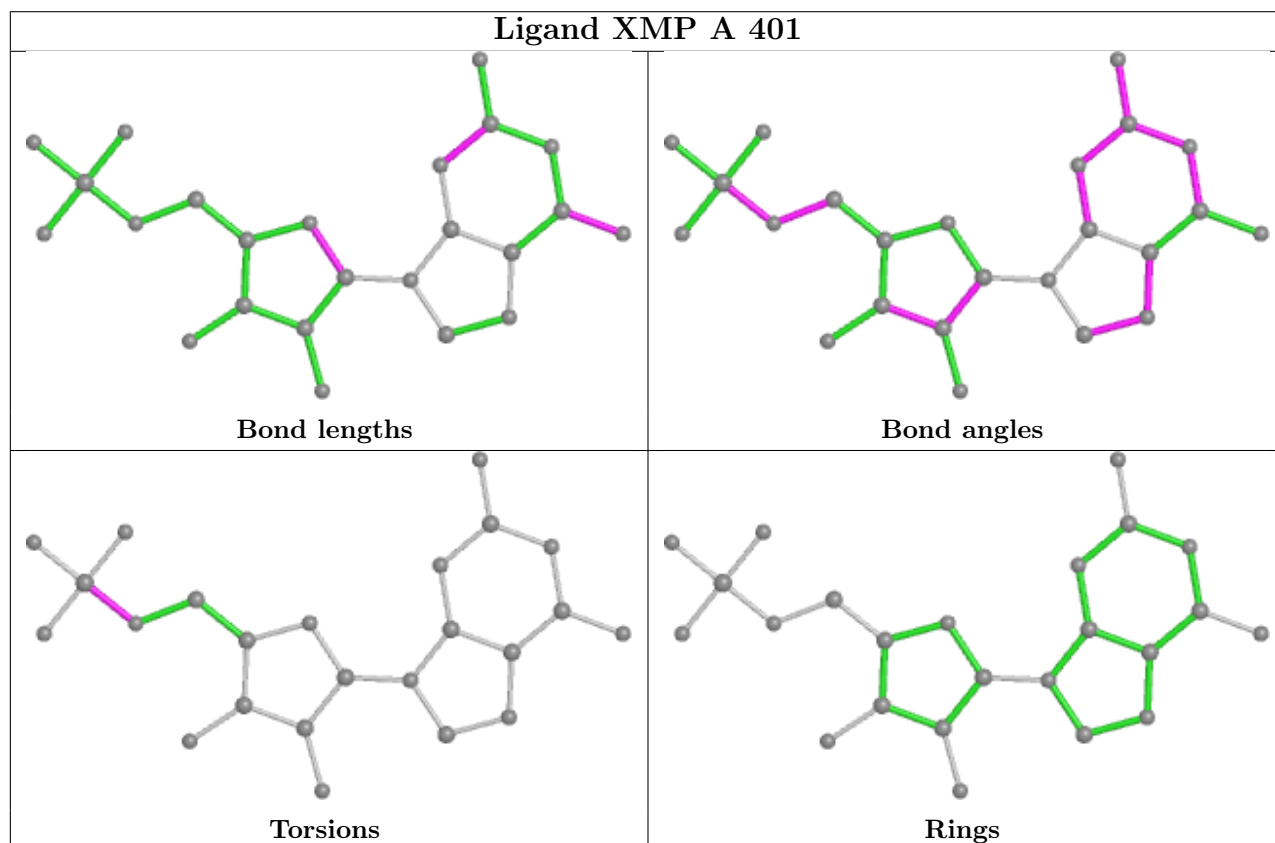
Mol	Chain	Res	Type	Atoms
2	A	401	XMP	C5'-O5'-P-O1P
2	A	401	XMP	C5'-O5'-P-O2P
3	D	402	PGE	O3-C5-C6-O4
3	D	402	PGE	C3-C4-O3-C5
2	A	401	XMP	C5'-O5'-P-O3P
3	D	402	PGE	C1-C2-O2-C3
3	D	402	PGE	C4-C3-O2-C2
2	C	401	XMP	C5'-O5'-P-O1P
3	D	402	PGE	C6-C5-O3-C4
4	D	403	MLA	C1-C2-C3-O3A

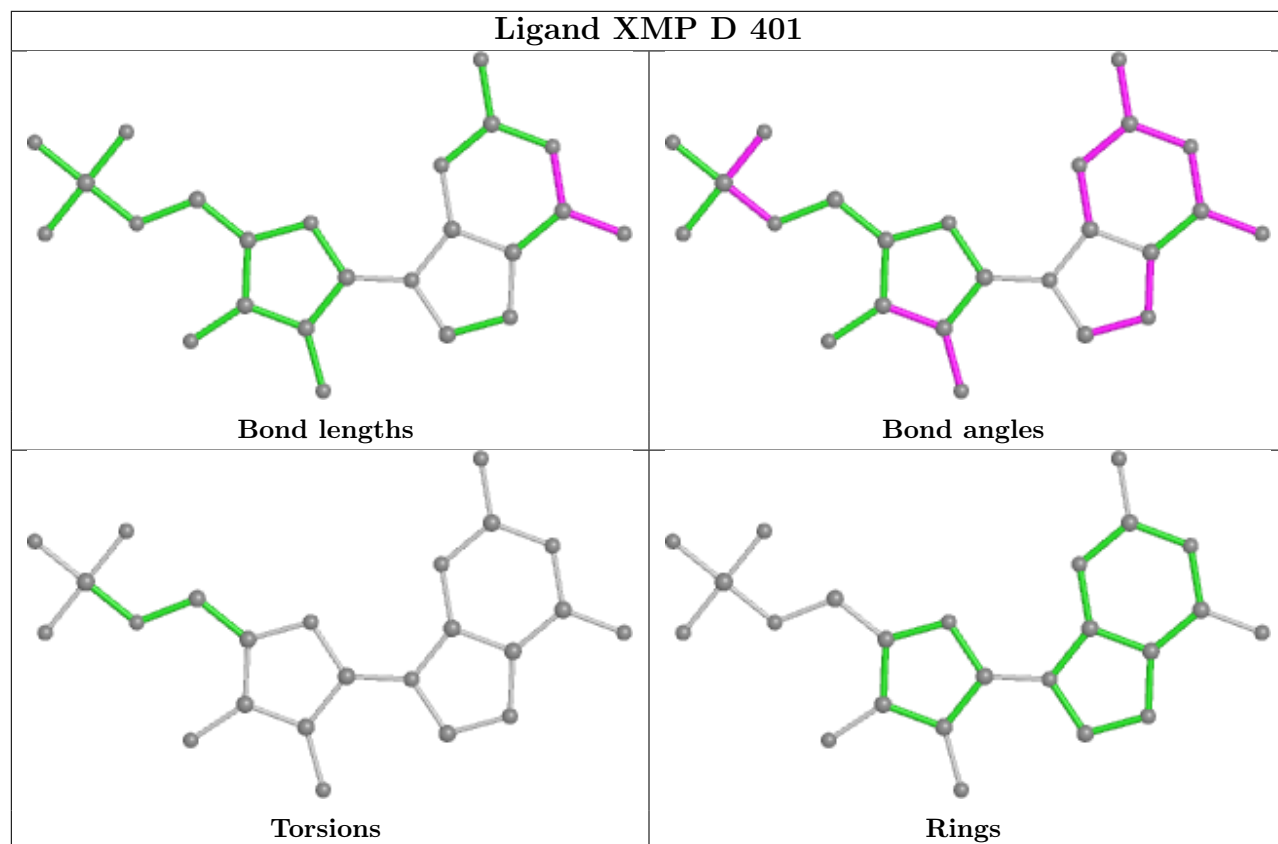
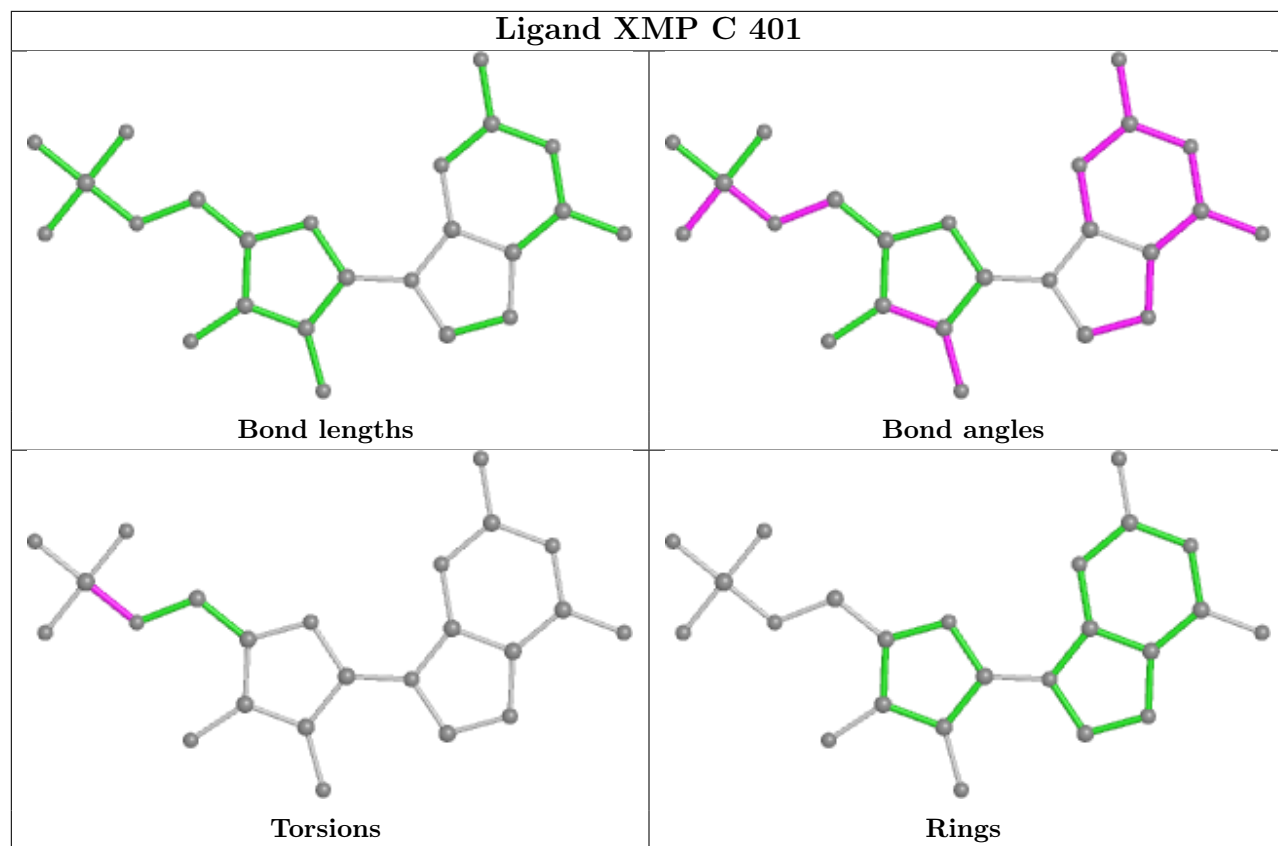
There are no ring outliers.

1 monomer is involved in 1 short contact:

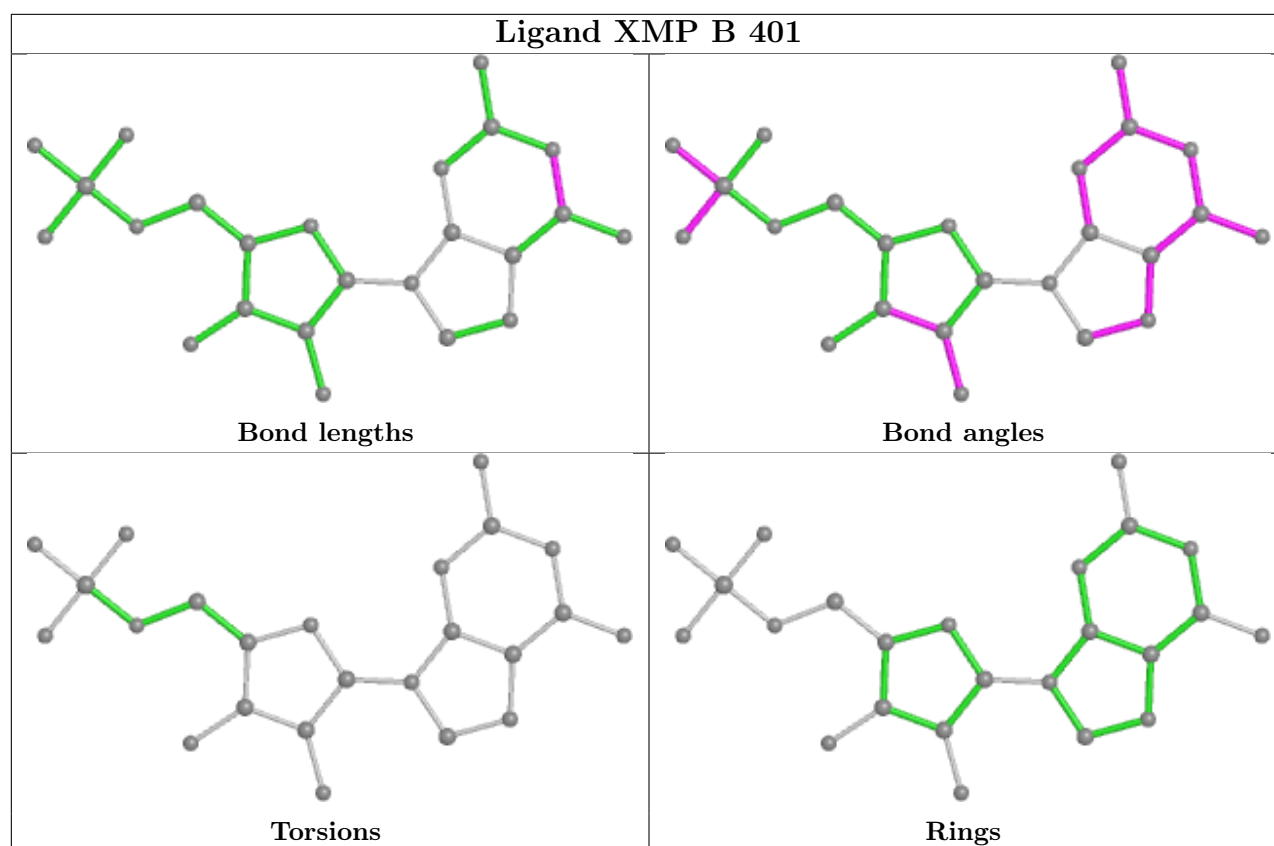
Mol	Chain	Res	Type	Clashes	Symm-Clashes
2	B	401	XMP	1	0

The following is a two-dimensional graphical depiction of Mogul quality analysis of bond lengths, bond angles, torsion angles, and ring geometry for all instances of the Ligand of Interest. In addition, ligands with molecular weight > 250 and outliers as shown on the validation Tables will also be included. For torsion angles, if less than 5% of the Mogul distribution of torsion angles is within 10 degrees of the torsion angle in question, then that torsion angle is considered an outlier. Any bond that is central to one or more torsion angles identified as an outlier by Mogul will be highlighted in the graph. For rings, the root-mean-square deviation (RMSD) between the ring in question and similar rings identified by Mogul is calculated over all ring torsion angles. If the average RMSD is greater than 60 degrees and the minimal RMSD between the ring in question and any Mogul-identified rings is also greater than 60 degrees, then that ring is considered an outlier. The outliers are highlighted in purple. The color gray indicates Mogul did not find sufficient equivalents in the CSD to analyse the geometry.









## 5.7 Other polymers [i](#)

There are no such residues in this entry.

## 5.8 Polymer linkage issues [i](#)

The following chains have linkage breaks:

Mol	Chain	Number of breaks
1	B	1

All chain breaks are listed below:

Model	Chain	Residue-1	Atom-1	Residue-2	Atom-2	Distance (Å)
1	B	53:PHE	C	54:VAL	N	1.17

## 6 Fit of model and data

### 6.1 Protein, DNA and RNA chains

In the following table, the column labelled ‘#RSRZ > 2’ contains the number (and percentage) of RSRZ outliers, followed by percent RSRZ outliers for the chain as percentile scores relative to all X-ray entries and entries of similar resolution. The OWAB column contains the minimum, median, 95<sup>th</sup> percentile and maximum values of the occupancy-weighted average B-factor per residue. The column labelled ‘Q < 0.9’ lists the number of (and percentage) of residues with an average occupancy less than 0.9.

Mol	Chain	Analysed	<RSRZ>	#RSRZ>2	OWAB(Å <sup>2</sup> )	Q<0.9
1	A	298/310 (96%)	0.11	4 (1%) 77 80	25, 43, 64, 87	0
1	B	296/310 (95%)	0.11	8 (2%) 54 60	26, 40, 65, 82	0
1	C	274/310 (88%)	0.80	44 (16%) 1 2	26, 65, 105, 139	0
1	D	298/310 (96%)	0.14	1 (0%) 94 94	25, 40, 64, 86	0
All	All	1166/1240 (94%)	0.28	57 (4%) 29 35	25, 43, 89, 139	0

All (57) RSRZ outliers are listed below:

Mol	Chain	Res	Type	RSRZ
1	C	50	THR	5.2
1	C	157	VAL	4.9
1	C	36	VAL	4.8
1	C	51	ALA	4.6
1	C	4	PRO	4.4
1	C	161	LEU	4.1
1	C	44	ALA	4.1
1	C	128	GLY	4.0
1	C	126	VAL	3.9
1	C	160	PRO	3.8
1	B	165	TYR	3.8
1	C	113	PHE	3.8
1	C	158	VAL	3.5
1	C	49	LEU	3.4
1	B	251	TYR	3.4
1	C	82	VAL	3.3
1	C	42	HIS	3.2
1	C	15	ILE	3.2
1	C	75	LEU	3.2
1	C	46	GLY	3.0
1	B	2	PHE	3.0

*Continued on next page...*

*Continued from previous page...*

Mol	Chain	Res	Type	RSRZ
1	C	27	ALA	2.9
1	C	171	LEU	2.9
1	C	163	GLU	2.8
1	C	28	LEU	2.8
1	C	174	LYS	2.8
1	C	53	PHE	2.8
1	C	26	ILE	2.8
1	C	118	GLU	2.8
1	B	244	VAL	2.7
1	C	88	PHE	2.7
1	A	145	HIS	2.7
1	C	12	VAL	2.7
1	C	105	ILE	2.7
1	C	11	ALA	2.6
1	C	114	GLU	2.6
1	A	2	PHE	2.6
1	C	71	PHE	2.6
1	C	178	LEU	2.6
1	C	109	PHE	2.6
1	C	54	VAL	2.5
1	C	110	ILE	2.5
1	C	106	GLY	2.4
1	D	1	MET	2.4
1	A	21	ASP	2.4
1	C	112	VAL	2.3
1	C	155	LEU	2.2
1	B	66	GLU	2.2
1	C	120	ILE	2.2
1	B	132	PRO	2.1
1	C	173	ALA	2.1
1	C	127	GLN	2.1
1	C	79	LEU	2.1
1	B	275	PHE	2.1
1	A	263	LEU	2.1
1	B	145	HIS	2.1
1	C	125	LEU	2.0

## 6.2 Non-standard residues in protein, DNA, RNA chains

There are no non-standard protein/DNA/RNA residues in this entry.

### 6.3 Carbohydrates [i](#)

There are no monosaccharides in this entry.

### 6.4 Ligands [i](#)

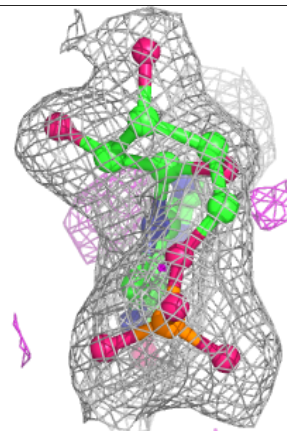
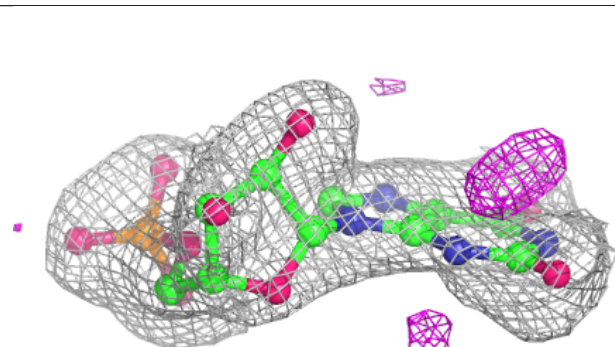
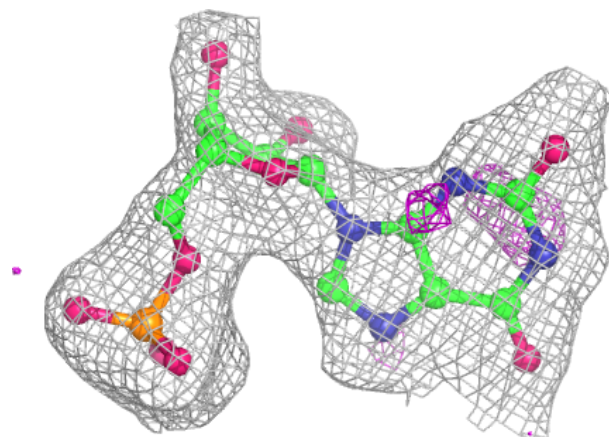
In the following table, the Atoms column lists the number of modelled atoms in the group and the number defined in the chemical component dictionary. The B-factors column lists the minimum, median, 95<sup>th</sup> percentile and maximum values of B factors of atoms in the group. The column labelled 'Q< 0.9' lists the number of atoms with occupancy less than 0.9.

Mol	Type	Chain	Res	Atoms	RSCC	RSR	B-factors(Å <sup>2</sup> )	Q<0.9
3	PGE	D	402	10/10	0.87	0.16	55,59,65,71	0
4	MLA	D	403	7/7	0.87	0.14	38,48,54,55	0
2	XMP	C	401	24/24	0.92	0.18	43,54,61,64	0
2	XMP	B	401	24/24	0.96	0.14	31,36,40,42	0
2	XMP	A	401	24/24	0.96	0.13	35,43,47,49	0
2	XMP	D	401	24/24	0.97	0.12	23,30,32,34	0

The following is a graphical depiction of the model fit to experimental electron density of all instances of the Ligand of Interest. In addition, ligands with molecular weight > 250 and outliers as shown on the geometry validation Tables will also be included. Each fit is shown from different orientation to approximate a three-dimensional view.

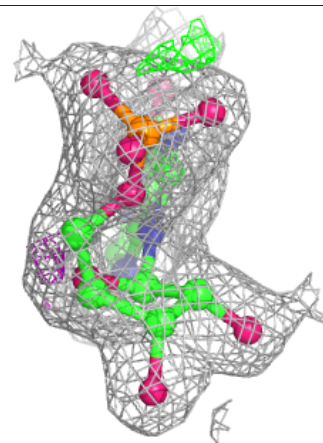
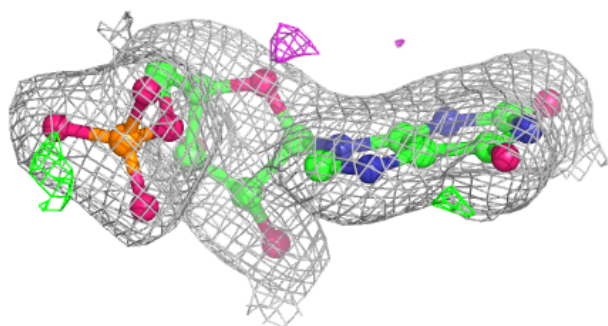
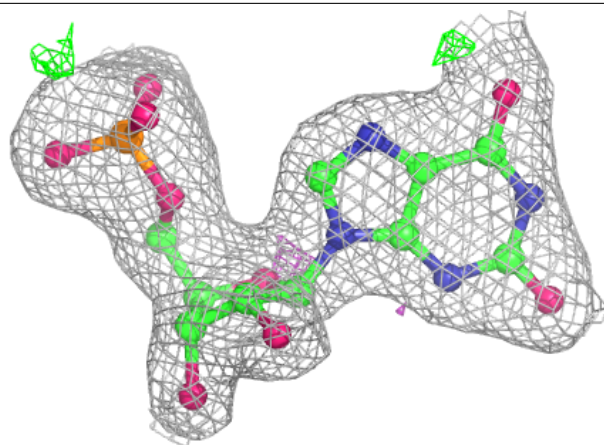
**Electron density around XMP C 401:**

$2mF_o-DF_c$  (at 0.7 rmsd) in gray  
 $mF_o-DF_c$  (at 3 rmsd) in purple (negative)  
and green (positive)



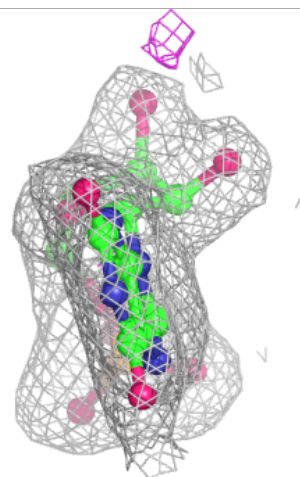
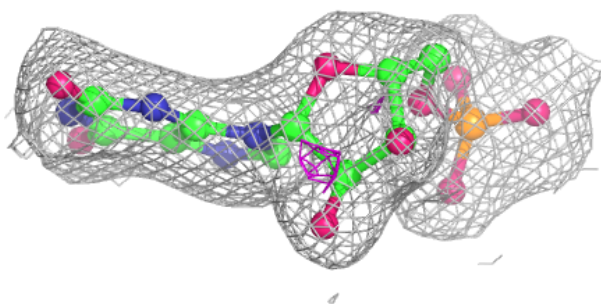
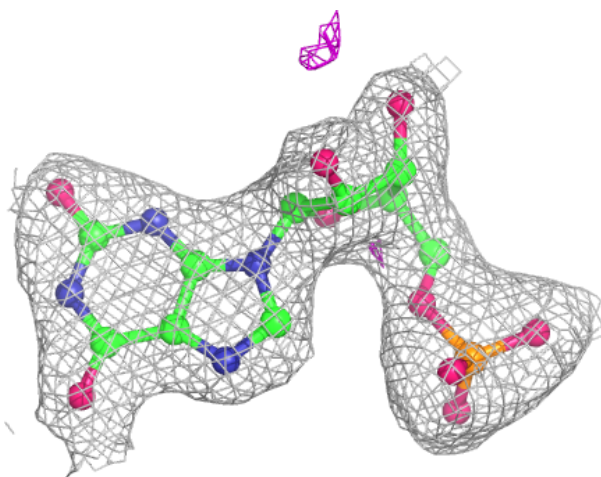
**Electron density around XMP B 401:**

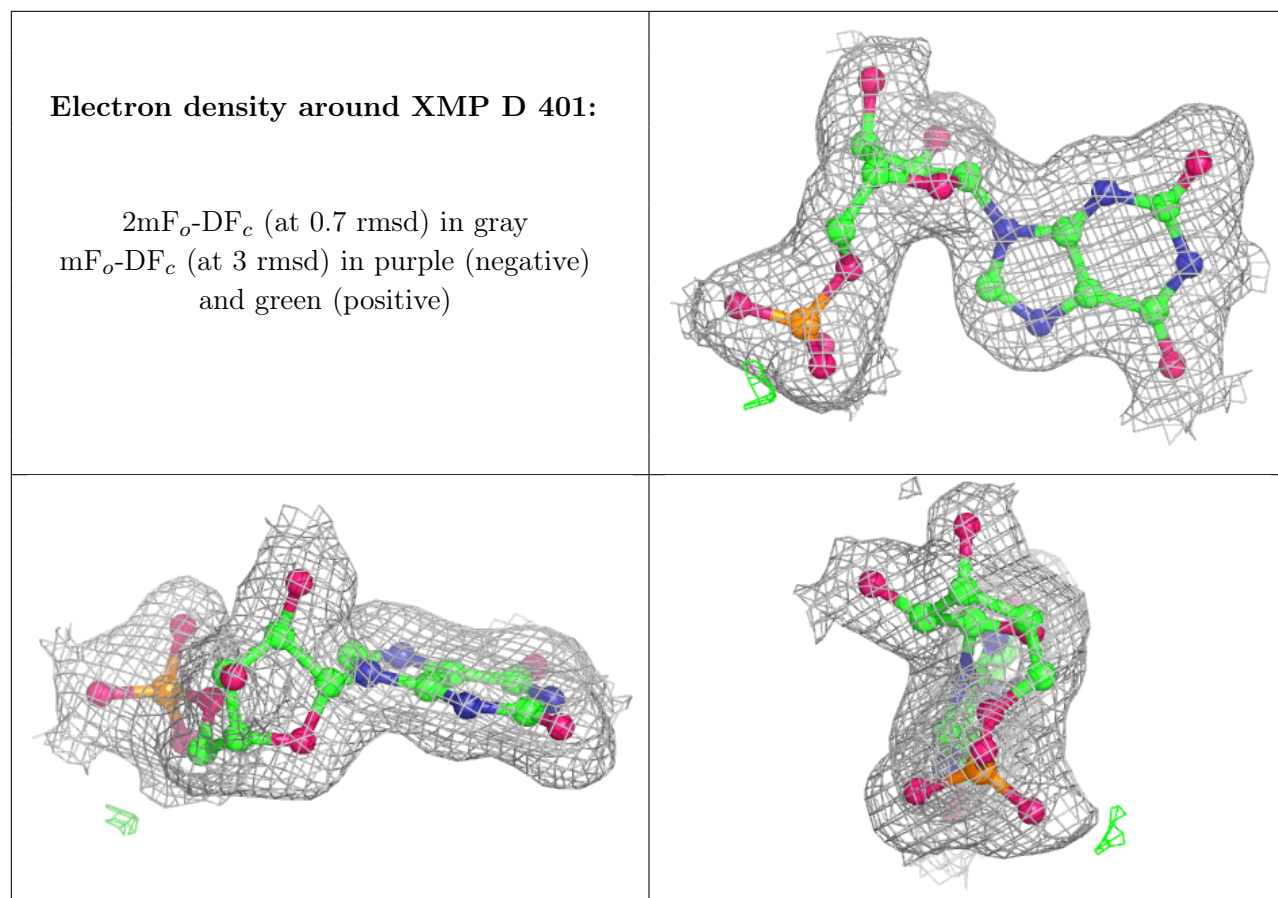
$2mF_o-DF_c$  (at 0.7 rmsd) in gray  
 $mF_o-DF_c$  (at 3 rmsd) in purple (negative)  
and green (positive)



**Electron density around XMP A 401:**

$2mF_o-DF_c$  (at 0.7 rmsd) in gray  
 $mF_o-DF_c$  (at 3 rmsd) in purple (negative)  
and green (positive)





## 6.5 Other polymers [i](#)

There are no such residues in this entry.