



# Full wwPDB X-ray Structure Validation Report ⓘ

Nov 15, 2023 – 03:50 PM JST

PDB ID : 6JID  
Title : Human MTHFD2 in complex with Compound 1  
Authors : Suzuki, M.; Matsui, Y.; Matsuhashi, N.; Kawai, J.  
Deposited on : 2019-02-20  
Resolution : 2.50 Å(reported)

This is a Full wwPDB X-ray Structure Validation Report for a publicly released PDB entry.

We welcome your comments at [validation@mail.wwpdb.org](mailto:validation@mail.wwpdb.org)

A user guide is available at

<https://www.wwpdb.org/validation/2017/XrayValidationReportHelp>

with specific help available everywhere you see the ⓘ symbol.

The types of validation reports are described at

<http://www.wwpdb.org/validation/2017/FAQs#types>.

---

The following versions of software and data (see [references ⓘ](#)) were used in the production of this report:

MolProbity : 4.02b-467  
Mogul : 1.8.5 (274361), CSD as541be (2020)  
Xtriage (Phenix) : 1.13  
EDS : 2.36  
buster-report : 1.1.7 (2018)  
Percentile statistics : 20191225.v01 (using entries in the PDB archive December 25th 2019)  
Refmac : 5.8.0158  
CCP4 : 7.0.044 (Gargrove)  
Ideal geometry (proteins) : Engh & Huber (2001)  
Ideal geometry (DNA, RNA) : Parkinson et al. (1996)  
Validation Pipeline (wwPDB-VP) : 2.36

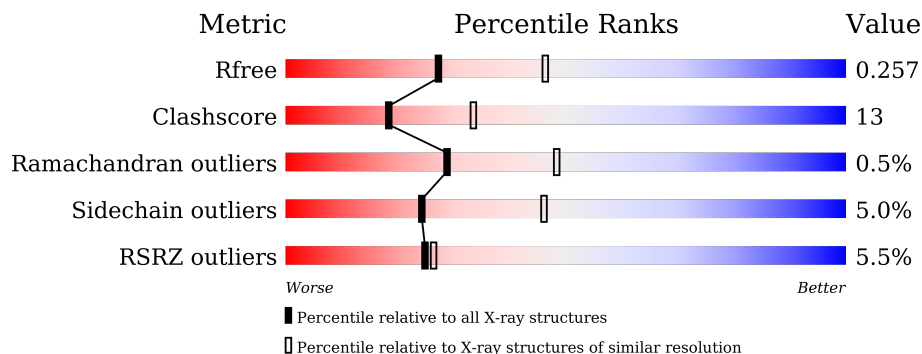
# 1 Overall quality at a glance

The following experimental techniques were used to determine the structure:

*X-RAY DIFFRACTION*

The reported resolution of this entry is 2.50 Å.

Percentile scores (ranging between 0-100) for global validation metrics of the entry are shown in the following graphic. The table shows the number of entries on which the scores are based.



Metric	Whole archive (#Entries)	Similar resolution (#Entries, resolution range(Å))
$R_{free}$	130704	4661 (2.50-2.50)
Clashscore	141614	5346 (2.50-2.50)
Ramachandran outliers	138981	5231 (2.50-2.50)
Sidechain outliers	138945	5233 (2.50-2.50)
RSRZ outliers	127900	4559 (2.50-2.50)

The table below summarises the geometric issues observed across the polymeric chains and their fit to the electron density. The red, orange, yellow and green segments of the lower bar indicate the fraction of residues that contain outliers for  $\geq 3$ , 2, 1 and 0 types of geometric quality criteria respectively. A grey segment represents the fraction of residues that are not modelled. The numeric value for each fraction is indicated below the corresponding segment, with a dot representing fractions  $\leq 5\%$ . The upper red bar (where present) indicates the fraction of residues that have poor fit to the electron density. The numeric value is given above the bar.

Mol	Chain	Length	Quality of chain
1	A	323	 5% 62% 28% • 9%
1	B	323	 5% 66% 22% • 11%

## 2 Entry composition i

There are 5 unique types of molecules in this entry. The entry contains 4406 atoms, of which 0 are hydrogens and 0 are deuteriums.

In the tables below, the ZeroOcc column contains the number of atoms modelled with zero occupancy, the AltConf column contains the number of residues with at least one atom in alternate conformation and the Trace column contains the number of residues modelled with at most 2 atoms.

- Molecule 1 is a protein called Bifunctional methylenetetrahydrofolate dehydrogenase/cyclohydrolase, mitochondrial.

Mol	Chain	Residues	Atoms					ZeroOcc	AltConf	Trace
			Total	C	N	O	S			
1	A	294	2187	1380	387	409	11	0	1	0
1	B	289	2093	1319	373	391	10	0	2	0

There are 40 discrepancies between the modelled and reference sequences:

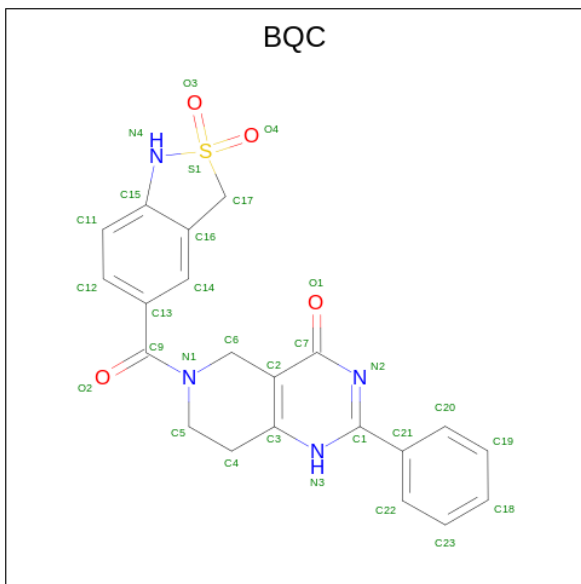
Chain	Residue	Modelled	Actual	Comment	Reference
A	16	MET	-	expression tag	UNP P13995
A	17	GLY	-	expression tag	UNP P13995
A	18	SER	-	expression tag	UNP P13995
A	19	SER	-	expression tag	UNP P13995
A	20	HIS	-	expression tag	UNP P13995
A	21	HIS	-	expression tag	UNP P13995
A	22	HIS	-	expression tag	UNP P13995
A	23	HIS	-	expression tag	UNP P13995
A	24	HIS	-	expression tag	UNP P13995
A	25	HIS	-	expression tag	UNP P13995
A	26	SER	-	expression tag	UNP P13995
A	27	SER	-	expression tag	UNP P13995
A	28	GLY	-	expression tag	UNP P13995
A	29	GLU	-	expression tag	UNP P13995
A	30	ASN	-	expression tag	UNP P13995
A	31	LEU	-	expression tag	UNP P13995
A	32	TYR	-	expression tag	UNP P13995
A	33	PHE	-	expression tag	UNP P13995
A	34	GLN	-	expression tag	UNP P13995
A	35	GLY	-	expression tag	UNP P13995
B	16	MET	-	expression tag	UNP P13995
B	17	GLY	-	expression tag	UNP P13995
B	18	SER	-	expression tag	UNP P13995
B	19	SER	-	expression tag	UNP P13995

*Continued on next page...*

Continued from previous page...

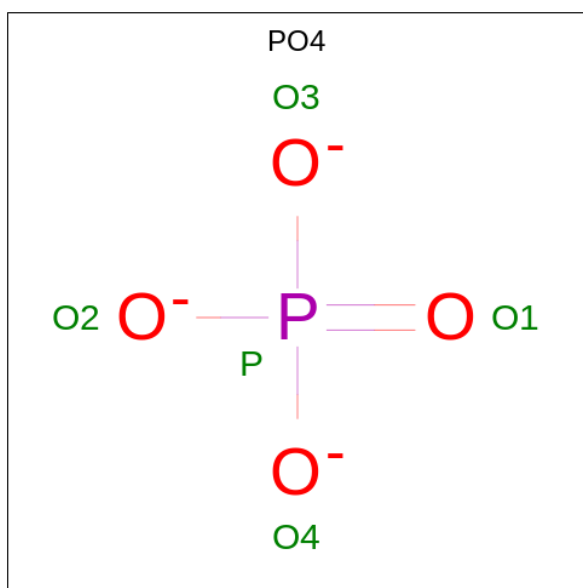
Chain	Residue	Modelled	Actual	Comment	Reference
B	20	HIS	-	expression tag	UNP P13995
B	21	HIS	-	expression tag	UNP P13995
B	22	HIS	-	expression tag	UNP P13995
B	23	HIS	-	expression tag	UNP P13995
B	24	HIS	-	expression tag	UNP P13995
B	25	HIS	-	expression tag	UNP P13995
B	26	SER	-	expression tag	UNP P13995
B	27	SER	-	expression tag	UNP P13995
B	28	GLY	-	expression tag	UNP P13995
B	29	GLU	-	expression tag	UNP P13995
B	30	ASN	-	expression tag	UNP P13995
B	31	LEU	-	expression tag	UNP P13995
B	32	TYR	-	expression tag	UNP P13995
B	33	PHE	-	expression tag	UNP P13995
B	34	GLN	-	expression tag	UNP P13995
B	35	GLY	-	expression tag	UNP P13995

- Molecule 2 is 5-(4-oxo-2-phenyl-1,5,7,8-tetrahydropyrido[4,3-d]pyrimidine-6(4H)-carbonyl)-1,3-dihydro-2H-2lambda 6 ,1-benzothiazole-2,2-dione (three-letter code: BQC) (formula: C<sub>21</sub>H<sub>18</sub>N<sub>4</sub>O<sub>4</sub>S) (labeled as "Ligand of Interest" by depositor).



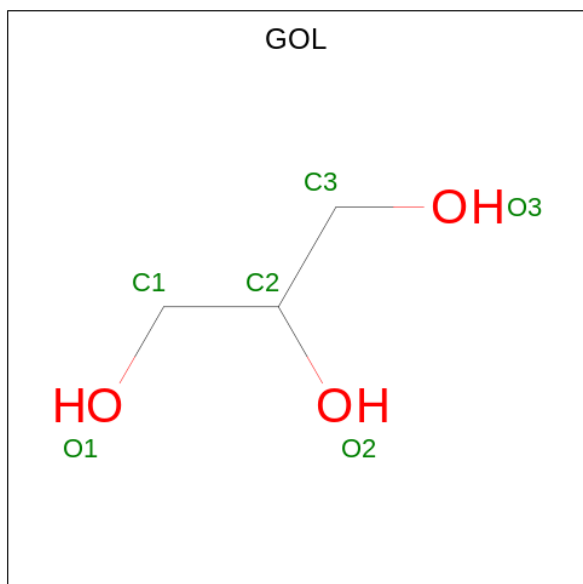
Mol	Chain	Residues	Atoms					ZeroOcc	AltConf
			Total	C	N	O	S		
2	A	1	30	21	4	4	1	0	0
2	B	1	30	21	4	4	1	0	0

- Molecule 3 is PHOSPHATE ION (three-letter code: PO4) (formula: O<sub>4</sub>P).



Mol	Chain	Residues	Atoms	ZeroOcc	AltConf
3	A	1	Total O P 5 4 1	0	0
3	B	1	Total O P 5 4 1	0	0

- Molecule 4 is GLYCEROL (three-letter code: GOL) (formula: C<sub>3</sub>H<sub>8</sub>O<sub>3</sub>).



Mol	Chain	Residues	Atoms	ZeroOcc	AltConf
4	A	1	Total C O 6 3 3	0	0

*Continued on next page...*

*Continued from previous page...*

Mol	Chain	Residues	Atoms			ZeroOcc	AltConf
4	B	1	Total	C	O	0	0
			6	3	3		
4	B	1	Total	C	O	0	0
			6	3	3		

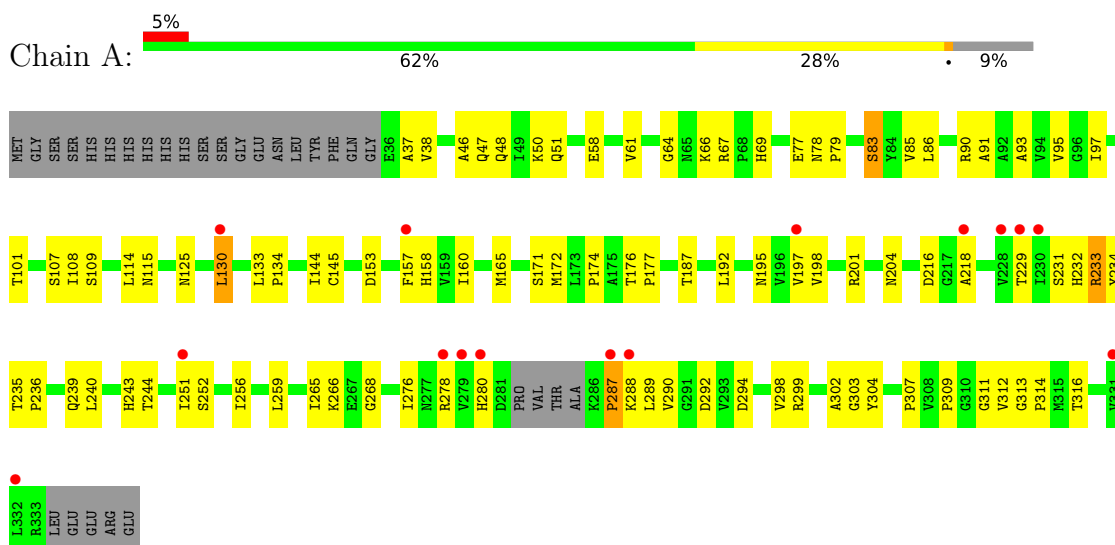
- Molecule 5 is water.

Mol	Chain	Residues	Atoms		ZeroOcc	AltConf
5	A	23	Total	O	0	0
			23	23		
5	B	15	Total	O	0	0
			15	15		

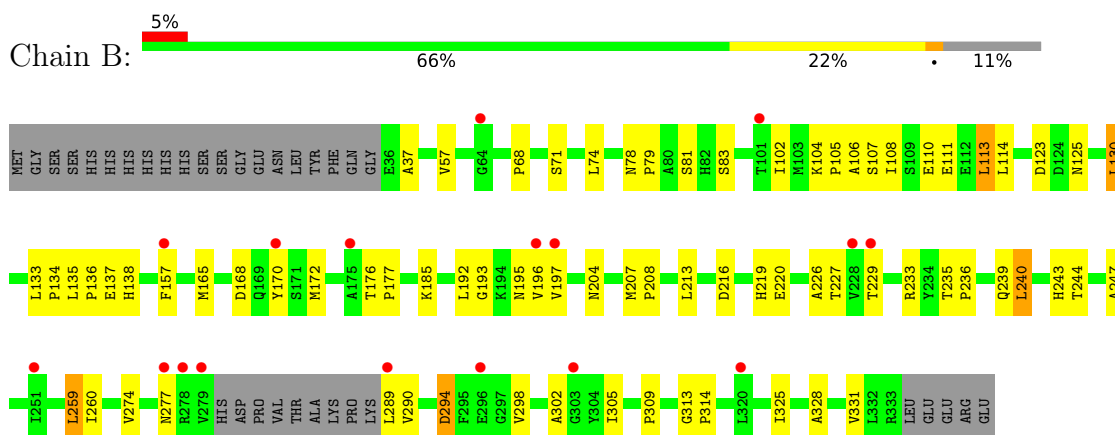
### 3 Residue-property plots [i](#)

These plots are drawn for all protein, RNA, DNA and oligosaccharide chains in the entry. The first graphic for a chain summarises the proportions of the various outlier classes displayed in the second graphic. The second graphic shows the sequence view annotated by issues in geometry and electron density. Residues are color-coded according to the number of geometric quality criteria for which they contain at least one outlier: green = 0, yellow = 1, orange = 2 and red = 3 or more. A red dot above a residue indicates a poor fit to the electron density ( $RSRZ > 2$ ). Stretches of 2 or more consecutive residues without any outlier are shown as a green connector. Residues present in the sample, but not in the model, are shown in grey.

- Molecule 1: Bifunctional methylenetetrahydrofolate dehydrogenase/cyclohydrolase, mitochondrial



- Molecule 1: Bifunctional methylenetetrahydrofolate dehydrogenase/cyclohydrolase, mitochondrial



## 4 Data and refinement statistics

Property	Value	Source
Space group	P 65	Depositor
Cell constants a, b, c, $\alpha$ , $\beta$ , $\gamma$	116.48Å 116.48Å 113.21Å 90.00° 90.00° 120.00°	Depositor
Resolution (Å)	25.00 – 2.50 24.68 – 2.50	Depositor EDS
% Data completeness (in resolution range)	99.8 (25.00-2.50) 99.9 (24.68-2.50)	Depositor EDS
$R_{merge}$	0.04	Depositor
$R_{sym}$	(Not available)	Depositor
$\langle I/\sigma(I) \rangle$ <sup>1</sup>	2.98 (at 2.50Å)	Xtrriage
Refinement program	REFMAC 5.8.0238	Depositor
R, $R_{free}$	0.200 , 0.260 0.198 , 0.257	Depositor DCC
$R_{free}$ test set	1567 reflections (5.20%)	wwPDB-VP
Wilson B-factor (Å <sup>2</sup> )	75.3	Xtrriage
Anisotropy	0.008	Xtrriage
Bulk solvent $k_{sol}$ (e/Å <sup>3</sup> ), $B_{sol}$ (Å <sup>2</sup> )	0.32 , 55.2	EDS
L-test for twinning <sup>2</sup>	$\langle  L  \rangle = 0.50$ , $\langle L^2 \rangle = 0.33$	Xtrriage
Estimated twinning fraction	0.046 for h,-h-k,-l	Xtrriage
$F_o, F_c$ correlation	0.97	EDS
Total number of atoms	4406	wwPDB-VP
Average B, all atoms (Å <sup>2</sup> )	78.0	wwPDB-VP

Xtrriage's analysis on translational NCS is as follows: *The largest off-origin peak in the Patterson function is 2.80% of the height of the origin peak. No significant pseudotranslation is detected.*

<sup>1</sup>Intensities estimated from amplitudes.

<sup>2</sup>Theoretical values of  $\langle |L| \rangle$ ,  $\langle L^2 \rangle$  for acentric reflections are 0.5, 0.333 respectively for untwinned datasets, and 0.375, 0.2 for perfectly twinned datasets.



## 5 Model quality [i](#)

### 5.1 Standard geometry [i](#)

Bond lengths and bond angles in the following residue types are not validated in this section: GOL, PO4, BQC

The Z score for a bond length (or angle) is the number of standard deviations the observed value is removed from the expected value. A bond length (or angle) with  $|Z| > 5$  is considered an outlier worth inspection. RMSZ is the root-mean-square of all Z scores of the bond lengths (or angles).

Mol	Chain	Bond lengths		Bond angles	
		RMSZ	# Z  >5	RMSZ	# Z  >5
1	A	0.40	0/2229	0.84	0/3034
1	B	0.41	0/2139	0.83	1/2921 (0.0%)
All	All	0.41	0/4368	0.83	1/5955 (0.0%)

There are no bond length outliers.

All (1) bond angle outliers are listed below:

Mol	Chain	Res	Type	Atoms	Z	Observed(°)	Ideal(°)
1	B	233	ARG	NE-CZ-NH1	-5.37	117.62	120.30

There are no chirality outliers.

There are no planarity outliers.

### 5.2 Too-close contacts [i](#)

In the following table, the Non-H and H(model) columns list the number of non-hydrogen atoms and hydrogen atoms in the chain respectively. The H(added) column lists the number of hydrogen atoms added and optimized by MolProbity. The Clashes column lists the number of clashes within the asymmetric unit, whereas Symm-Clashes lists symmetry-related clashes.

Mol	Chain	Non-H	H(model)	H(added)	Clashes	Symm-Clashes
1	A	2187	0	2196	66	0
1	B	2093	0	2035	53	0
2	A	30	0	0	0	0
2	B	30	0	0	2	0
3	A	5	0	0	0	0
3	B	5	0	0	0	0
4	A	6	0	8	1	0
4	B	12	0	16	0	0

*Continued on next page...*

*Continued from previous page...*

Mol	Chain	Non-H	H(model)	H(added)	Clashes	Symm-Clashes
5	A	23	0	0	2	0
5	B	15	0	0	1	0
All	All	4406	0	4255	115	0

The all-atom clashscore is defined as the number of clashes found per 1000 atoms (including hydrogen atoms). The all-atom clashscore for this structure is 13.

All (115) close contacts within the same asymmetric unit are listed below, sorted by their clash magnitude.

Atom-1	Atom-2	Interatomic distance (Å)	Clash overlap (Å)
1:A:130:LEU:HD12	1:A:130:LEU:C	2.00	0.81
1:A:157[A]:PHE:CE1	1:A:204:ASN:HB2	2.22	0.74
1:B:130:LEU:C	1:B:130:LEU:HD12	2.08	0.73
1:B:104:LYS:HB3	1:B:105:PRO:HD2	1.74	0.69
1:B:157[A]:PHE:CE1	1:B:204:ASN:HB2	2.29	0.67
1:B:309:PRO:HB3	2:B:402:BQC:O4	1.95	0.66
1:A:216:ASP:OD1	1:A:218:ALA:HB3	1.96	0.66
1:A:233:ARG:HH11	1:A:233:ARG:HB2	1.61	0.65
1:A:256:ILE:HG22	1:A:259:LEU:HB2	1.80	0.64
1:A:252:SER:OG	1:A:292:ASP:OD2	2.13	0.64
1:A:37:ALA:HB2	1:A:302:ALA:O	1.98	0.63
1:B:102:ILE:O	1:B:102:ILE:HG22	1.98	0.62
1:B:135:LEU:HB3	1:B:136:PRO:HD2	1.81	0.61
1:A:233:ARG:HH11	1:A:233:ARG:CB	2.13	0.61
1:B:37:ALA:HB2	1:B:302:ALA:O	2.01	0.60
1:B:136:PRO:O	1:B:138:HIS:N	2.35	0.60
1:B:106:ALA:O	1:B:108:ILE:N	2.35	0.60
1:A:278:ARG:HG2	1:A:278:ARG:O	2.02	0.58
1:B:104:LYS:HB3	1:B:105:PRO:CD	2.34	0.58
1:B:192:LEU:C	1:B:192:LEU:HD23	2.24	0.57
1:A:85:VAL:HG11	1:A:101:THR:HG21	1.87	0.57
1:A:233:ARG:CB	1:A:233:ARG:NH1	2.68	0.57
1:B:113:LEU:HD12	1:B:113:LEU:O	2.06	0.56
1:B:196:VAL:HG23	1:B:226:ALA:HB1	1.89	0.54
1:A:192:LEU:C	1:A:192:LEU:HD23	2.29	0.53
1:B:259:LEU:HD23	1:B:260:ILE:CG1	2.38	0.53
1:A:130:LEU:C	1:A:130:LEU:CD1	2.75	0.52
1:A:265:ILE:HG22	1:A:266:LYS:O	2.10	0.52
1:A:78:ASN:OD1	1:A:79:PRO:HD2	2.09	0.52
1:A:171:SER:O	4:A:403:GOL:H12	2.10	0.52
1:B:192:LEU:HD23	1:B:193:GLY:N	2.25	0.52

*Continued on next page...*

*Continued from previous page...*

Atom-1	Atom-2	Interatomic distance (Å)	Clash overlap (Å)
1:A:133:LEU:HB3	1:A:134:PRO:HA	1.91	0.51
1:A:158:HIS:CE1	1:A:160:ILE:HD12	2.45	0.51
1:B:74:LEU:HD11	1:B:81:SER:HB3	1.92	0.51
1:A:240:LEU:HD12	1:A:244:THR:HG23	1.91	0.51
1:B:133:LEU:HB3	1:B:134:PRO:HA	1.93	0.51
1:B:274:VAL:HG12	1:B:274:VAL:O	2.11	0.51
1:A:83:SER:O	1:A:86:LEU:HB3	2.11	0.50
1:A:165:MET:HA	5:A:508:HOH:O	2.12	0.50
1:B:57:VAL:HG22	1:B:325:ILE:HD13	1.93	0.50
1:B:294:ASP:O	1:B:298:VAL:HG23	2.11	0.50
1:B:157[B]:PHE:CE2	1:B:204:ASN:ND2	2.73	0.50
1:A:197:VAL:HG22	1:A:229:THR:HB	1.95	0.49
1:A:38:VAL:O	1:A:304:TYR:HA	2.13	0.49
1:A:69:HIS:HB3	1:A:125:ASN:O	2.13	0.49
1:A:198:VAL:HA	1:A:251:ILE:O	2.13	0.49
1:A:232:HIS:HB2	5:A:502:HOH:O	2.13	0.49
1:B:244:THR:O	1:B:247:ALA:HB3	2.12	0.48
1:A:288:LYS:HG3	1:A:289:LEU:N	2.28	0.48
1:A:294:ASP:O	1:A:298:VAL:HG23	2.13	0.48
1:A:313:GLY:O	1:A:316:THR:HB	2.14	0.48
1:B:197:VAL:HG22	1:B:229:THR:HB	1.95	0.48
1:B:168:ASP:OD2	1:B:219:HIS:ND1	2.42	0.48
1:A:66:LYS:NZ	1:A:67:ARG:O	2.47	0.47
1:A:235:THR:HG23	1:B:227:THR:OG1	2.14	0.47
1:B:309:PRO:HB3	2:B:402:BQC:S1	2.55	0.47
1:B:176:THR:HB	1:B:177:PRO:HD3	1.97	0.47
1:A:50:LYS:O	1:A:95:VAL:HG12	2.15	0.47
1:A:85:VAL:HG11	1:A:101:THR:CG2	2.45	0.47
1:B:216:ASP:HB3	1:B:219:HIS:CE1	2.50	0.47
1:A:38:VAL:HB	1:A:304:TYR:CD2	2.50	0.46
1:A:276:ILE:HG22	1:A:276:ILE:O	2.15	0.46
1:A:216:ASP:OD1	1:A:218:ALA:CB	2.64	0.46
1:A:233:ARG:NH1	1:A:233:ARG:HB3	2.31	0.46
1:A:153:ASP:O	1:A:172:MET:HG2	2.16	0.45
1:A:236:PRO:HD2	1:A:239:GLN:HB2	1.97	0.45
1:B:123:ASP:OD1	1:B:125:ASN:HB3	2.16	0.45
1:A:91:ALA:O	1:A:95:VAL:HG22	2.15	0.45
1:B:165:MET:HA	5:B:505:HOH:O	2.16	0.45
1:B:289:LEU:O	1:B:290:VAL:HG13	2.17	0.45
1:A:158:HIS:HE1	1:A:160:ILE:HD12	1.80	0.45
1:A:174:PRO:HG2	1:A:177:PRO:HG2	1.99	0.45

*Continued on next page...*

*Continued from previous page...*

Atom-1	Atom-2	Interatomic distance (Å)	Clash overlap (Å)
1:A:307:PRO:HB2	1:A:309:PRO:O	2.16	0.45
1:A:312:VAL:O	1:A:313:GLY:C	2.55	0.45
1:B:185:LYS:HA	1:B:185:LYS:HD3	1.67	0.45
1:B:157[A]:PHE:CE1	1:B:204:ASN:CB	2.99	0.45
1:A:48:GLN:O	1:A:51:GLN:HB3	2.17	0.44
1:A:195:ASN:ND2	1:B:243:HIS:HE1	2.15	0.44
1:B:277:ASN:O	1:B:289:LEU:HA	2.17	0.44
1:A:145:CYS:HG	1:A:157[B]:PHE:HD2	1.66	0.44
1:A:243:HIS:HE1	1:B:195:ASN:ND2	2.15	0.44
1:B:106:ALA:C	1:B:108:ILE:H	2.21	0.44
1:A:234:TYR:O	1:B:193:GLY:HA2	2.18	0.44
1:B:236:PRO:HD2	1:B:239:GLN:HG3	2.00	0.44
1:A:176:THR:N	1:A:177:PRO:CD	2.81	0.44
1:A:114:LEU:HD21	1:A:144:ILE:HD13	2.00	0.43
1:A:37:ALA:CB	1:A:302:ALA:O	2.64	0.43
1:A:77:GLU:O	1:A:78:ASN:C	2.56	0.43
1:B:136:PRO:C	1:B:138:HIS:N	2.73	0.42
1:B:68:PRO:HB3	1:B:328:ALA:HB2	2.00	0.42
1:B:236:PRO:HD2	1:B:239:GLN:CG	2.49	0.42
1:B:240:LEU:HD13	1:B:240:LEU:HA	1.77	0.42
1:A:46:ALA:O	1:A:50:LYS:HG3	2.19	0.42
1:A:95:VAL:CG2	1:A:97:ILE:HD12	2.49	0.42
1:B:113:LEU:HD12	1:B:113:LEU:C	2.40	0.42
1:A:108:ILE:HG12	1:A:109:SER:N	2.35	0.42
1:B:313:GLY:N	1:B:314:PRO:HD2	2.34	0.41
1:A:280:HIS:ND1	1:A:287:PRO:HB3	2.35	0.41
1:B:136:PRO:C	1:B:138:HIS:H	2.23	0.41
1:B:207:MET:HB3	1:B:208:PRO:HD3	2.03	0.41
1:B:240:LEU:HD12	1:B:244:THR:CG2	2.51	0.41
1:A:311:GLY:O	1:A:314:PRO:HD2	2.20	0.41
1:A:90:ARG:O	1:A:93:ALA:HB3	2.20	0.41
1:A:61:VAL:O	1:A:64:GLY:N	2.42	0.41
1:A:130:LEU:HD12	1:A:130:LEU:O	2.20	0.41
1:B:170:TYR:CE2	1:B:220:GLU:HG2	2.55	0.41
1:A:201:ARG:HG3	1:A:201:ARG:O	2.21	0.41
1:B:110:GLU:O	1:B:114:LEU:HG	2.21	0.41
1:B:235:THR:HA	1:B:236:PRO:HD3	1.89	0.41
1:B:78:ASN:HA	1:B:79:PRO:HD2	1.82	0.40
1:A:256:ILE:HG22	1:A:256:ILE:O	2.20	0.40
1:A:176:THR:HB	1:A:177:PRO:HD3	2.02	0.40
1:A:268:GLY:O	1:A:303:GLY:HA3	2.22	0.40

*Continued on next page...*

Continued from previous page...

Atom-1	Atom-2	Interatomic distance (Å)	Clash overlap (Å)
1:A:187:THR:HG22	1:A:187:THR:O	2.21	0.40

There are no symmetry-related clashes.

## 5.3 Torsion angles [i](#)

### 5.3.1 Protein backbone [i](#)

In the following table, the Percentiles column shows the percent Ramachandran outliers of the chain as a percentile score with respect to all X-ray entries followed by that with respect to entries of similar resolution.

The Analysed column shows the number of residues for which the backbone conformation was analysed, and the total number of residues.

Mol	Chain	Analysed	Favoured	Allowed	Outliers	Percentiles	
1	A	291/323 (90%)	274 (94%)	16 (6%)	1 (0%)	41	61
1	B	287/323 (89%)	267 (93%)	18 (6%)	2 (1%)	22	39
All	All	578/646 (90%)	541 (94%)	34 (6%)	3 (0%)	29	48

All (3) Ramachandran outliers are listed below:

Mol	Chain	Res	Type
1	B	107	SER
1	B	137	GLU
1	A	287	PRO

### 5.3.2 Protein sidechains [i](#)

In the following table, the Percentiles column shows the percent sidechain outliers of the chain as a percentile score with respect to all X-ray entries followed by that with respect to entries of similar resolution.

The Analysed column shows the number of residues for which the sidechain conformation was analysed, and the total number of residues.

Mol	Chain	Analysed	Rotameric	Outliers	Percentiles	
1	A	231/271 (85%)	221 (96%)	10 (4%)	29	53
1	B	209/271 (77%)	197 (94%)	12 (6%)	20	39

Continued on next page...

*Continued from previous page...*

Mol	Chain	Analysed	Rotameric	Outliers	Percentiles
All	All	440/542 (81%)	418 (95%)	22 (5%)	24 46

All (22) residues with a non-rotameric sidechain are listed below:

Mol	Chain	Res	Type
1	A	47	GLN
1	A	58	GLU
1	A	83	SER
1	A	107	SER
1	A	115	ASN
1	A	130	LEU
1	A	231	SER
1	A	233	ARG
1	A	290	VAL
1	A	299	ARG
1	B	71	SER
1	B	83	SER
1	B	111	GLU
1	B	113	LEU
1	B	130	LEU
1	B	172	MET
1	B	213	LEU
1	B	240	LEU
1	B	259	LEU
1	B	294	ASP
1	B	305	ILE
1	B	331	VAL

Sometimes sidechains can be flipped to improve hydrogen bonding and reduce clashes. All (7) such sidechains are listed below:

Mol	Chain	Res	Type
1	A	51	GLN
1	A	55	GLN
1	A	82	HIS
1	A	243	HIS
1	B	69	HIS
1	B	243	HIS
1	B	258	ASN

### 5.3.3 RNA [i](#)

There are no RNA molecules in this entry.

## 5.4 Non-standard residues in protein, DNA, RNA chains [i](#)

There are no non-standard protein/DNA/RNA residues in this entry.

## 5.5 Carbohydrates [i](#)

There are no monosaccharides in this entry.

## 5.6 Ligand geometry [i](#)

7 ligands are modelled in this entry.

In the following table, the Counts columns list the number of bonds (or angles) for which Mogul statistics could be retrieved, the number of bonds (or angles) that are observed in the model and the number of bonds (or angles) that are defined in the Chemical Component Dictionary. The Link column lists molecule types, if any, to which the group is linked. The Z score for a bond length (or angle) is the number of standard deviations the observed value is removed from the expected value. A bond length (or angle) with  $|Z| > 2$  is considered an outlier worth inspection. RMSZ is the root-mean-square of all Z scores of the bond lengths (or angles).

Mol	Type	Chain	Res	Link	Bond lengths			Bond angles		
					Counts	RMSZ	# Z  > 2	Counts	RMSZ	# Z  > 2
3	PO4	A	402	-	4,4,4	0.22	0	6,6,6	0.58	0
2	BQC	A	401	-	32,34,34	1.71	10 (31%)	37,51,51	2.25	11 (29%)
4	GOL	A	403	-	5,5,5	0.12	0	5,5,5	0.35	0
2	BQC	B	402	-	32,34,34	1.40	4 (12%)	37,51,51	2.03	9 (24%)
4	GOL	B	404	-	5,5,5	0.19	0	5,5,5	0.48	0
3	PO4	B	403	-	4,4,4	0.99	0	6,6,6	0.72	0
4	GOL	B	401	-	5,5,5	0.12	0	5,5,5	0.31	0

In the following table, the Chirals column lists the number of chiral outliers, the number of chiral centers analysed, the number of these observed in the model and the number defined in the Chemical Component Dictionary. Similar counts are reported in the Torsion and Rings columns. '-' means no outliers of that kind were identified.

Mol	Type	Chain	Res	Link	Chirals	Torsions	Rings
2	BQC	A	401	-	-	2/12/31/31	0/5/5/5
4	GOL	A	403	-	-	3/4/4/4	-

*Continued on next page...*

Continued from previous page...

Mol	Type	Chain	Res	Link	Chirals	Torsions	Rings
2	BQC	B	402	-	-	0/12/31/31	0/5/5/5
4	GOL	B	404	-	-	2/4/4/4	-
4	GOL	B	401	-	-	4/4/4/4	-

All (14) bond length outliers are listed below:

Mol	Chain	Res	Type	Atoms	Z	Observed(Å)	Ideal(Å)
2	B	402	BQC	O3-S1	4.22	1.49	1.43
2	A	401	BQC	O3-S1	4.07	1.49	1.43
2	A	401	BQC	C20-C21	3.17	1.44	1.39
2	A	401	BQC	O4-S1	2.52	1.47	1.43
2	B	402	BQC	C14-C13	2.42	1.43	1.39
2	B	402	BQC	O4-S1	2.32	1.46	1.43
2	A	401	BQC	C14-C16	2.28	1.43	1.39
2	A	401	BQC	S1-N4	2.24	1.69	1.65
2	A	401	BQC	C18-C23	2.20	1.43	1.38
2	A	401	BQC	C14-C13	2.16	1.42	1.39
2	A	401	BQC	C12-C13	2.14	1.43	1.39
2	A	401	BQC	C7-C2	2.14	1.47	1.45
2	A	401	BQC	O2-C9	2.12	1.26	1.22
2	B	402	BQC	C4-C3	2.07	1.53	1.49

All (20) bond angle outliers are listed below:

Mol	Chain	Res	Type	Atoms	Z	Observed(°)	Ideal(°)
2	B	402	BQC	O4-S1-O3	6.77	123.17	117.28
2	A	401	BQC	C16-C15-N4	6.50	113.21	109.01
2	B	402	BQC	C16-C15-N4	6.29	113.08	109.01
2	A	401	BQC	O4-S1-O3	5.35	121.94	117.28
2	A	401	BQC	C20-C21-C1	-4.11	113.57	120.86
2	A	401	BQC	C23-C22-C21	-3.75	115.91	120.34
2	A	401	BQC	C17-S1-N4	-3.42	93.10	95.70
2	A	401	BQC	C18-C19-C20	-2.90	115.78	120.19
2	A	401	BQC	N3-C1-N2	2.87	125.53	122.84
2	B	402	BQC	C4-C5-N1	-2.85	105.72	110.54
2	A	401	BQC	C22-C21-C20	2.75	122.50	118.59
2	B	402	BQC	C19-C20-C21	-2.68	117.17	120.34
2	B	402	BQC	C22-C21-C20	2.66	122.38	118.59
2	B	402	BQC	C5-C4-C3	2.64	113.15	108.48
2	A	401	BQC	C2-C6-N1	2.61	112.00	109.62
2	B	402	BQC	C17-S1-N4	-2.46	93.83	95.70
2	A	401	BQC	O1-C7-N2	2.44	124.38	120.23

Continued on next page...



*Continued from previous page...*

Mol	Chain	Res	Type	Atoms	Z	Observed(°)	Ideal(°)
2	B	402	BQC	N3-C1-N2	2.17	124.87	122.84
2	A	401	BQC	C5-N1-C9	2.15	129.58	122.78
2	B	402	BQC	C13-C14-C16	-2.11	118.27	121.47

There are no chirality outliers.

All (11) torsion outliers are listed below:

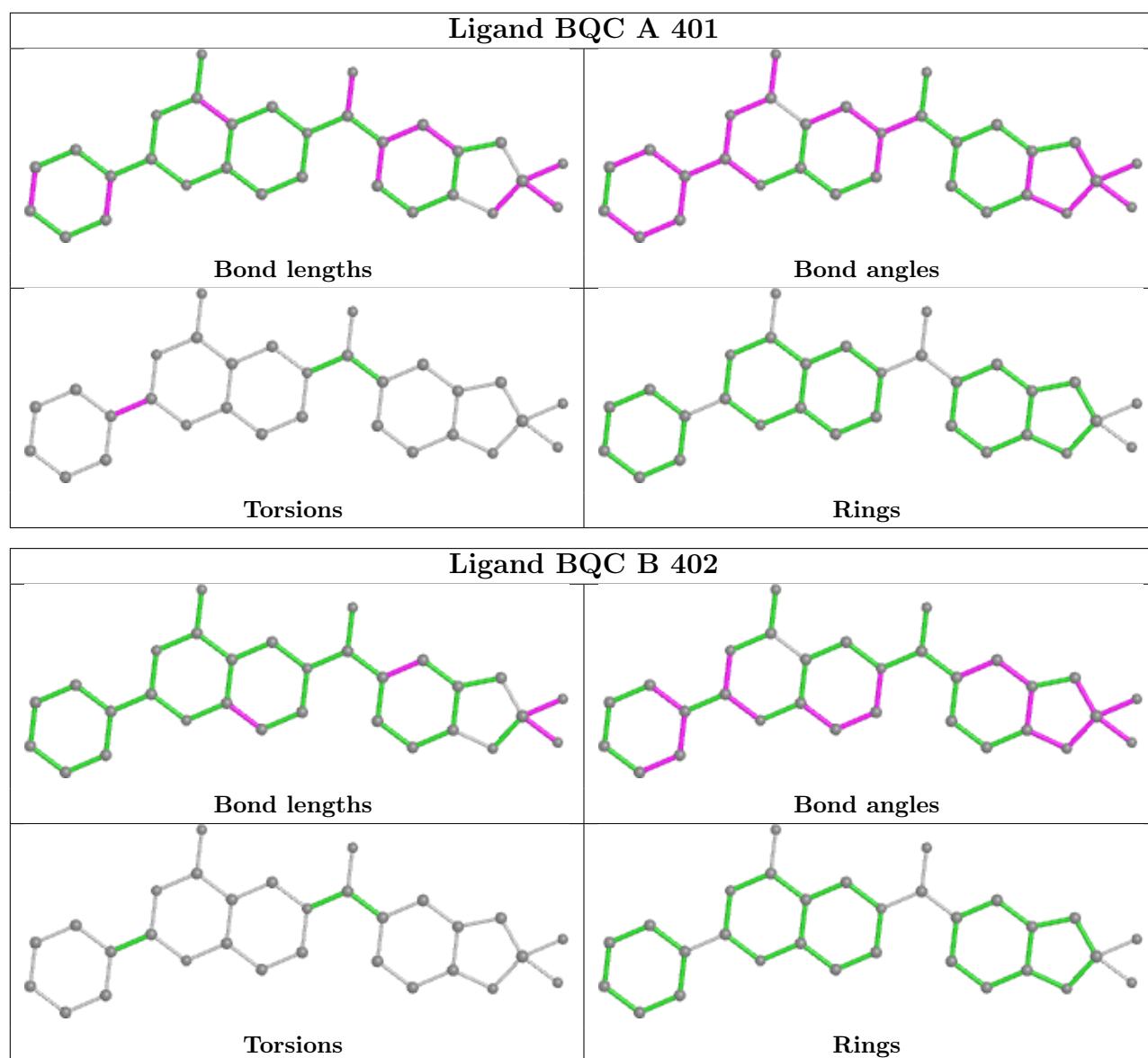
Mol	Chain	Res	Type	Atoms
4	B	404	GOL	O2-C2-C3-O3
4	A	403	GOL	O1-C1-C2-C3
4	B	401	GOL	C1-C2-C3-O3
4	B	404	GOL	C1-C2-C3-O3
4	A	403	GOL	O1-C1-C2-O2
4	B	401	GOL	O1-C1-C2-O2
4	B	401	GOL	O1-C1-C2-C3
4	B	401	GOL	O2-C2-C3-O3
2	A	401	BQC	N2-C1-C21-C20
2	A	401	BQC	N3-C1-C21-C20
4	A	403	GOL	C1-C2-C3-O3

There are no ring outliers.

2 monomers are involved in 3 short contacts:

Mol	Chain	Res	Type	Clashes	Symm-Clashes
4	A	403	GOL	1	0
2	B	402	BQC	2	0

The following is a two-dimensional graphical depiction of Mogul quality analysis of bond lengths, bond angles, torsion angles, and ring geometry for all instances of the Ligand of Interest. In addition, ligands with molecular weight > 250 and outliers as shown on the validation Tables will also be included. For torsion angles, if less than 5% of the Mogul distribution of torsion angles is within 10 degrees of the torsion angle in question, then that torsion angle is considered an outlier. Any bond that is central to one or more torsion angles identified as an outlier by Mogul will be highlighted in the graph. For rings, the root-mean-square deviation (RMSD) between the ring in question and similar rings identified by Mogul is calculated over all ring torsion angles. If the average RMSD is greater than 60 degrees and the minimal RMSD between the ring in question and any Mogul-identified rings is also greater than 60 degrees, then that ring is considered an outlier. The outliers are highlighted in purple. The color gray indicates Mogul did not find sufficient equivalents in the CSD to analyse the geometry.



## 5.7 Other polymers [i](#)

There are no such residues in this entry.

## 5.8 Polymer linkage issues [i](#)

There are no chain breaks in this entry.

## 6 Fit of model and data [i](#)

### 6.1 Protein, DNA and RNA chains [i](#)

In the following table, the column labelled ‘#RSRZ > 2’ contains the number (and percentage) of RSRZ outliers, followed by percent RSRZ outliers for the chain as percentile scores relative to all X-ray entries and entries of similar resolution. The OWAB column contains the minimum, median, 95<sup>th</sup> percentile and maximum values of the occupancy-weighted average B-factor per residue. The column labelled ‘Q < 0.9’ lists the number of (and percentage) of residues with an average occupancy less than 0.9.

Mol	Chain	Analysed	<RSRZ>	#RSRZ>2	OWAB(Å <sup>2</sup> )	Q<0.9
1	A	294/323 (91%)	0.05	15 (5%) 28 29	50, 74, 110, 154	0
1	B	289/323 (89%)	0.19	17 (5%) 22 23	51, 78, 114, 136	0
All	All	583/646 (90%)	0.12	32 (5%) 25 26	50, 76, 112, 154	0

All (32) RSRZ outliers are listed below:

Mol	Chain	Res	Type	RSRZ
1	A	279	VAL	5.5
1	B	279	VAL	5.3
1	A	280	HIS	4.0
1	A	288	LYS	3.8
1	A	229	THR	3.8
1	A	287	PRO	3.3
1	B	229	THR	3.2
1	A	332	LEU	3.2
1	A	230	ILE	3.1
1	B	303	GLY	3.1
1	A	197	VAL	3.1
1	B	196	VAL	3.1
1	B	228	VAL	3.0
1	A	251	ILE	2.9
1	A	331	VAL	2.9
1	B	197	VAL	2.9
1	B	278	ARG	2.8
1	B	277	ASN	2.7
1	B	101	THR	2.7
1	A	278	ARG	2.7
1	B	296	GLU	2.7
1	A	130	LEU	2.5
1	A	218	ALA	2.4
1	A	228	VAL	2.4

*Continued on next page...*

*Continued from previous page...*

Mol	Chain	Res	Type	RSRZ
1	B	64	GLY	2.4
1	B	251	ILE	2.4
1	B	170	TYR	2.2
1	B	157[A]	PHE	2.2
1	A	157[A]	PHE	2.2
1	B	289	LEU	2.1
1	B	320	LEU	2.1
1	B	175	ALA	2.1

## 6.2 Non-standard residues in protein, DNA, RNA chains [i](#)

There are no non-standard protein/DNA/RNA residues in this entry.

## 6.3 Carbohydrates [i](#)

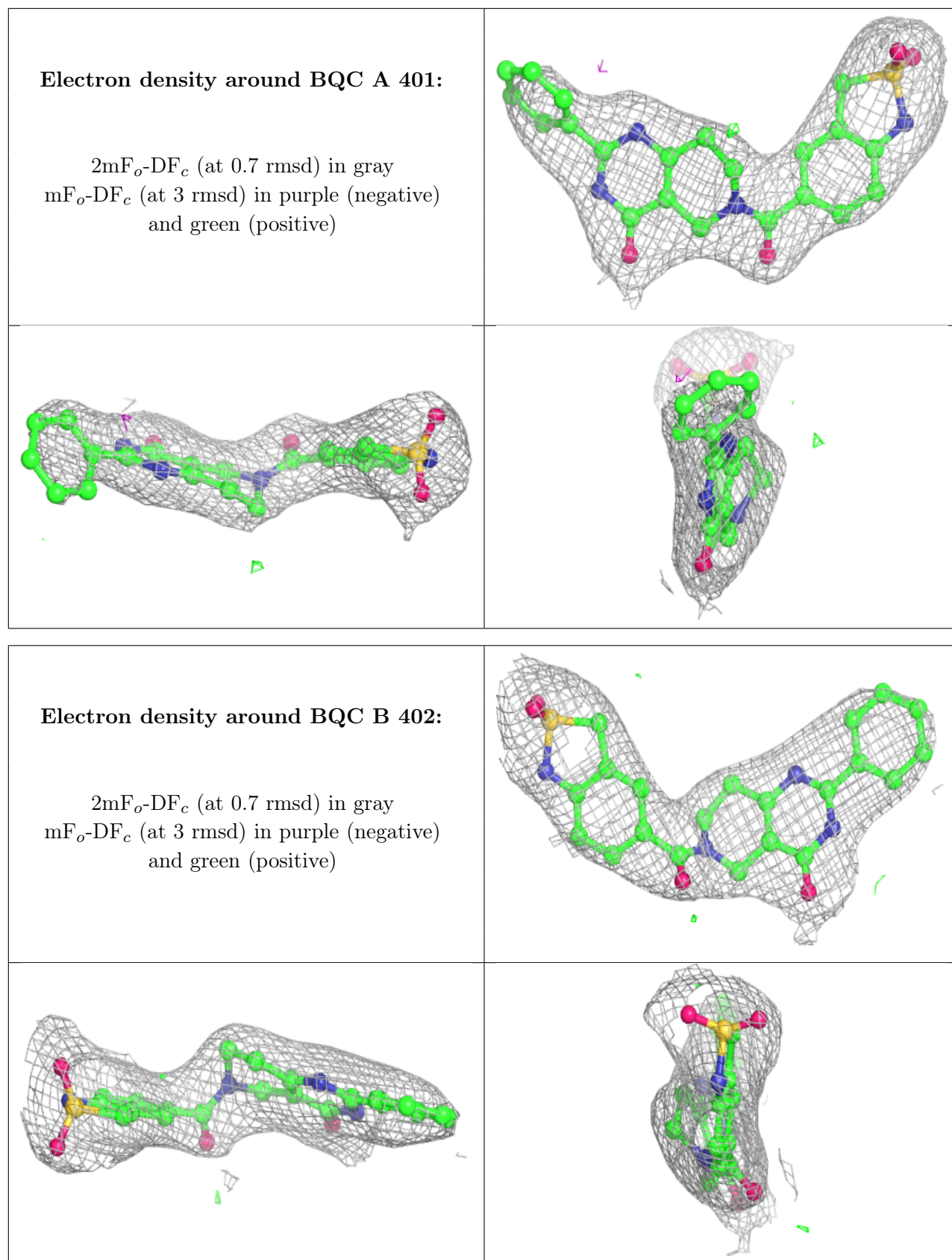
There are no monosaccharides in this entry.

## 6.4 Ligands [i](#)

In the following table, the Atoms column lists the number of modelled atoms in the group and the number defined in the chemical component dictionary. The B-factors column lists the minimum, median, 95<sup>th</sup> percentile and maximum values of B factors of atoms in the group. The column labelled 'Q< 0.9' lists the number of atoms with occupancy less than 0.9.

Mol	Type	Chain	Res	Atoms	RSCC	RSR	B-factors(Å <sup>2</sup> )	Q<0.9
4	GOL	B	404	6/6	0.84	0.33	84,93,103,110	0
4	GOL	B	401	6/6	0.87	0.17	77,96,108,114	0
4	GOL	A	403	6/6	0.91	0.20	70,89,106,116	0
3	PO4	B	403	5/5	0.96	0.11	75,76,80,87	0
2	BQC	A	401	30/30	0.96	0.12	52,72,113,121	0
2	BQC	B	402	30/30	0.97	0.11	62,81,96,104	0
3	PO4	A	402	5/5	0.97	0.09	60,77,80,83	0

The following is a graphical depiction of the model fit to experimental electron density of all instances of the Ligand of Interest. In addition, ligands with molecular weight > 250 and outliers as shown on the geometry validation Tables will also be included. Each fit is shown from different orientation to approximate a three-dimensional view.



## 6.5 Other polymers [i](#)

There are no such residues in this entry.