



Full wwPDB X-ray Structure Validation Report ⓘ

Dec 3, 2020 – 12:05 PM EST

PDB ID : 7JH6
Title : De novo designed two-domain di-Zn(II) and porphyrin-binding protein
Authors : Schmidt, N.; Liu, L.; DeGrado, W.F.
Deposited on : 2020-07-20
Resolution : 3.50 Å(reported)

This is a Full wwPDB X-ray Structure Validation Report for a publicly released PDB entry.

We welcome your comments at validation@mail.wwpdb.org

A user guide is available at

<https://www.wwpdb.org/validation/2017/XrayValidationReportHelp>

with specific help available everywhere you see the ⓘ symbol.

The following versions of software and data (see [references ⓘ](#)) were used in the production of this report:

MolProbity : 4.02b-467
Mogul : 1.8.5 (274361), CSD as541be (2020)
Xtriage (Phenix) : 1.13
EDS : 2.14.6
buster-report : 1.1.7 (2018)
Percentile statistics : 20191225.v01 (using entries in the PDB archive December 25th 2019)
Refmac : 5.8.0158
CCP4 : 7.0.044 (Gargrove)
Ideal geometry (proteins) : Engh & Huber (2001)
Ideal geometry (DNA, RNA) : Parkinson et al. (1996)
Validation Pipeline (wwPDB-VP) : 2.14.6

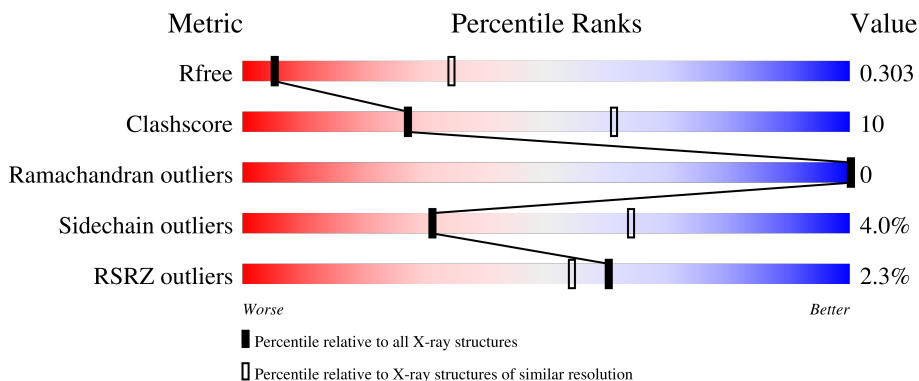
1 Overall quality at a glance i

The following experimental techniques were used to determine the structure:

X-RAY DIFFRACTION

The reported resolution of this entry is 3.50 Å.

Percentile scores (ranging between 0-100) for global validation metrics of the entry are shown in the following graphic. The table shows the number of entries on which the scores are based.



Metric	Whole archive (#Entries)	Similar resolution (#Entries, resolution range(Å))
R_{free}	130704	1659 (3.60-3.40)
Clashscore	141614	1036 (3.58-3.42)
Ramachandran outliers	138981	1005 (3.58-3.42)
Sidechain outliers	138945	1006 (3.58-3.42)
RSRZ outliers	127900	1559 (3.60-3.40)

The table below summarises the geometric issues observed across the polymeric chains and their fit to the electron density. The red, orange, yellow and green segments on the lower bar indicate the fraction of residues that contain outliers for ≥ 3 , 2, 1 and 0 types of geometric quality criteria respectively. A grey segment represents the fraction of residues that are not modelled. The numeric value for each fraction is indicated below the corresponding segment, with a dot representing fractions $\leq 5\%$. The upper red bar (where present) indicates the fraction of residues that have poor fit to the electron density. The numeric value is given above the bar.

Mol	Chain	Length	Quality of chain
1	A	174	 3% 80% 19% .
1	B	174	 2% 80% 19% .
1	C	174	 2% 83% 16% .
1	D	174	 2% 83% 16% .

The following table lists non-polymeric compounds, carbohydrate monomers and non-standard

residues in protein, DNA, RNA chains that are outliers for geometric or electron-density-fit criteria:

Mol	Type	Chain	Res	Chirality	Geometry	Clashes	Electron density
3	7BU	A	203	-	-	X	-
3	7BU	B	203	-	-	X	-
3	7BU	C	203	-	-	X	-
3	7BU	D	203	-	-	X	-
4	2PE	A	204	-	-	-	X

2 Entry composition

There are 5 unique types of molecules in this entry. The entry contains 6073 atoms, of which 0 are hydrogens and 0 are deuteriums.

In the tables below, the ZeroOcc column contains the number of atoms modelled with zero occupancy, the AltConf column contains the number of residues with at least one atom in alternate conformation and the Trace column contains the number of residues modelled with at most 2 atoms.

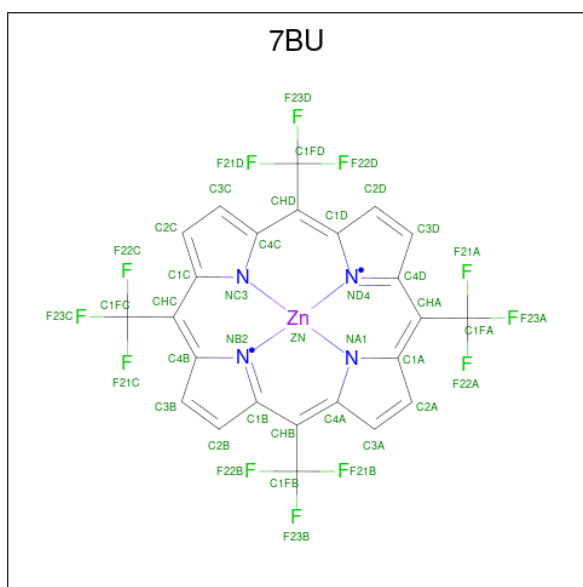
- Molecule 1 is a protein called Two-domain di-Zn(II) and porphyrin-binding protein.

Mol	Chain	Residues	Atoms				ZeroOcc	AltConf	Trace
1	A	174	Total	C	N	O	0	0	0
			1468	932	248	288			
1	B	174	Total	C	N	O	0	0	0
			1468	932	248	288			
1	C	174	Total	C	N	O	0	0	0
			1468	932	248	288			
1	D	174	Total	C	N	O	0	0	0
			1468	932	248	288			

- Molecule 2 is ZINC ION (three-letter code: ZN) (formula: Zn) (labeled as "Ligand of Interest" by author).

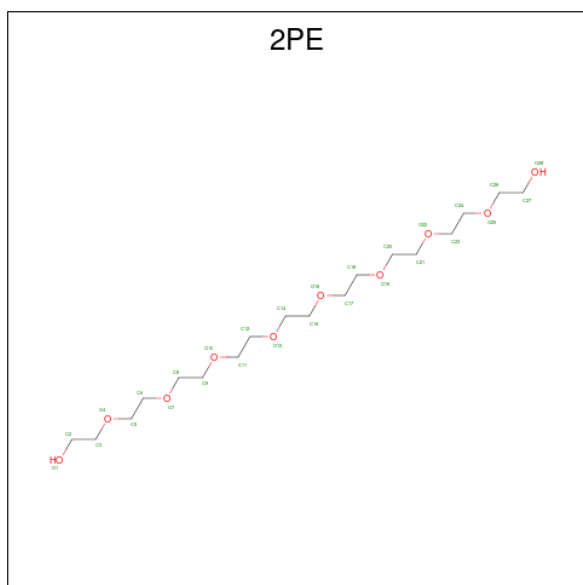
Mol	Chain	Residues	Atoms		ZeroOcc	AltConf
2	B	2	Total	Zn	0	0
			2	2		
2	A	2	Total	Zn	0	0
			2	2		
2	D	2	Total	Zn	0	0
			2	2		
2	C	2	Total	Zn	0	0
			2	2		

- Molecule 3 is [5,10,15,20-tetrakis(trifluoromethyl)porphyrinato(2-)-kappa 4 N 21 ,N 22 , N 23 ,N 24]zinc (three-letter code: 7BU) (formula: C₂₄H₈F₁₂N₄Zn) (labeled as "Ligand of Interest" by author).



Mol	Chain	Residues	Atoms					ZeroOcc	AltConf
			Total	C	F	N	Zn		
3	A	1	Total	C	F	N	Zn	0	0
			41	24	12	4	1		
3	B	1	Total	C	F	N	Zn	0	0
			41	24	12	4	1		
3	C	1	Total	C	F	N	Zn	0	0
			41	24	12	4	1		
3	D	1	Total	C	F	N	Zn	0	0
			41	24	12	4	1		

- Molecule 4 is NONAETHYLENE GLYCOL (three-letter code: 2PE) (formula: $C_{18}H_{38}O_{10}$).



Mol	Chain	Residues	Atoms			ZeroOcc	AltConf
4	A	1	Total	C	O	0	0
			28	18	10		

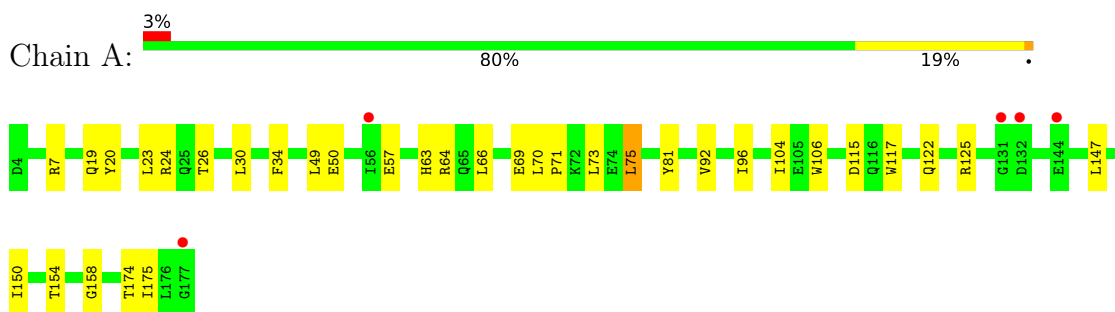
- Molecule 5 is water.

Mol	Chain	Residues	Atoms		ZeroOcc	AltConf
5	A	1	Total	O	0	0
			1	1		

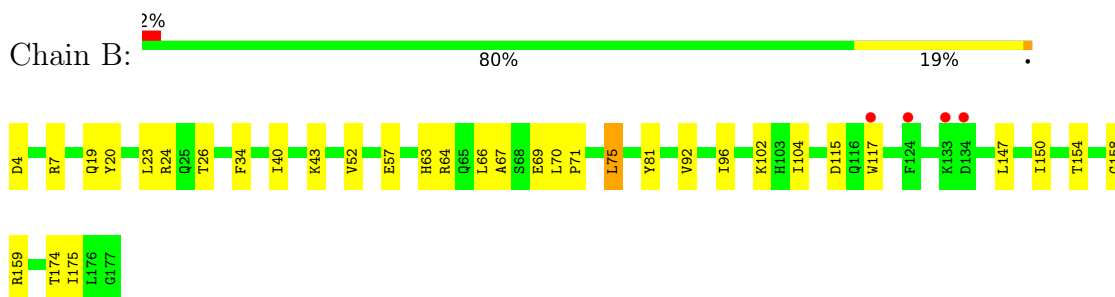
3 Residue-property plots [i](#)

These plots are drawn for all protein, RNA, DNA and oligosaccharide chains in the entry. The first graphic for a chain summarises the proportions of the various outlier classes displayed in the second graphic. The second graphic shows the sequence view annotated by issues in geometry and electron density. Residues are color-coded according to the number of geometric quality criteria for which they contain at least one outlier: green = 0, yellow = 1, orange = 2 and red = 3 or more. A red dot above a residue indicates a poor fit to the electron density ($RSRZ > 2$). Stretches of 2 or more consecutive residues without any outlier are shown as a green connector. Residues present in the sample, but not in the model, are shown in grey.

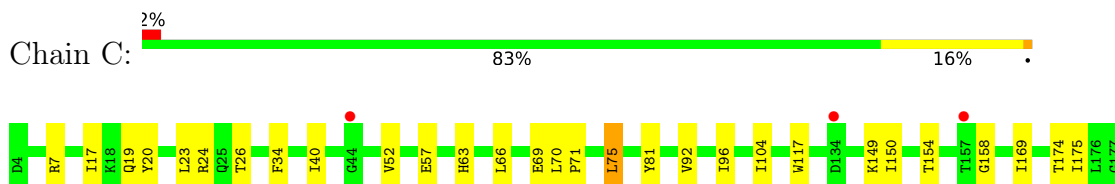
- Molecule 1: Two-domain di-Zn(II) and porphyrin-binding protein



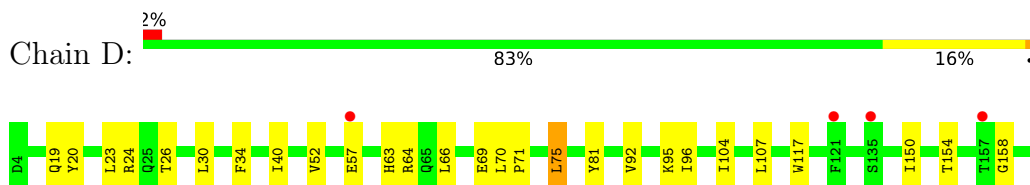
- Molecule 1: Two-domain di-Zn(II) and porphyrin-binding protein



- Molecule 1: Two-domain di-Zn(II) and porphyrin-binding protein



- Molecule 1: Two-domain di-Zn(II) and porphyrin-binding protein



4 Data and refinement statistics i

Property	Value	Source
Space group	C 1 2 1	Depositor
Cell constants a, b, c, α , β , γ	172.48Å 27.82Å 188.49Å 90.00° 117.16° 90.00°	Depositor
Resolution (Å)	86.24 – 3.50 86.24 – 3.50	Depositor EDS
% Data completeness (in resolution range)	99.8 (86.24-3.50) 99.8 (86.24-3.50)	Depositor EDS
R_{merge}	0.16	Depositor
R_{sym}	(Not available)	Depositor
$\langle I/\sigma(I) \rangle$ ¹	1.55 (at 3.49Å)	Xtrriage
Refinement program	REFMAC 5.8.0222	Depositor
R, R_{free}	0.261 , 0.283 0.276 , 0.303	Depositor DCC
R_{free} test set	503 reflections (4.70%)	wwPDB-VP
Wilson B-factor (Å ²)	125.8	Xtrriage
Anisotropy	0.187	Xtrriage
Bulk solvent k_{sol} (e/Å ³), B_{sol} (Å ²)	0.30 , 81.6	EDS
L-test for twinning ²	$\langle L \rangle = 0.45$, $\langle L^2 \rangle = 0.27$	Xtrriage
Estimated twinning fraction	0.043 for h,-k,-h-l	Xtrriage
F_o, F_c correlation	0.93	EDS
Total number of atoms	6073	wwPDB-VP
Average B, all atoms (Å ²)	160.0	wwPDB-VP

Xtrriage's analysis on translational NCS is as follows: *The largest off-origin peak in the Patterson function is 13.06% of the height of the origin peak. No significant pseudotranslation is detected.*

¹Intensities estimated from amplitudes.

²Theoretical values of $\langle |L| \rangle$, $\langle L^2 \rangle$ for acentric reflections are 0.5, 0.333 respectively for untwinned datasets, and 0.375, 0.2 for perfectly twinned datasets.

5 Model quality [i](#)

5.1 Standard geometry [i](#)

Bond lengths and bond angles in the following residue types are not validated in this section: ZN, 7BU, 2PE

The Z score for a bond length (or angle) is the number of standard deviations the observed value is removed from the expected value. A bond length (or angle) with $|Z| > 5$ is considered an outlier worth inspection. RMSZ is the root-mean-square of all Z scores of the bond lengths (or angles).

Mol	Chain	Bond lengths		Bond angles	
		RMSZ	# Z >5	RMSZ	# Z >5
1	A	0.32	0/1486	0.50	0/1990
1	B	0.32	0/1486	0.49	0/1990
1	C	0.31	0/1486	0.47	0/1990
1	D	0.32	0/1486	0.47	0/1990
All	All	0.32	0/5944	0.48	0/7960

There are no bond length outliers.

There are no bond angle outliers.

There are no chirality outliers.

There are no planarity outliers.

5.2 Too-close contacts [i](#)

In the following table, the Non-H and H(model) columns list the number of non-hydrogen atoms and hydrogen atoms in the chain respectively. The H(added) column lists the number of hydrogen atoms added and optimized by MolProbity. The Clashes column lists the number of clashes within the asymmetric unit, whereas Symm-Clashes lists symmetry related clashes.

Mol	Chain	Non-H	H(model)	H(added)	Clashes	Symm-Clashes
1	A	1468	0	1483	22	0
1	B	1468	0	1483	28	0
1	C	1468	0	1483	22	0
1	D	1468	0	1483	22	0
2	A	2	0	0	0	0
2	B	2	0	0	0	0
2	C	2	0	0	0	0
2	D	2	0	0	0	0
3	A	41	0	0	12	0

Continued on next page...

Continued from previous page...

Mol	Chain	Non-H	H(model)	H(added)	Clashes	Symm-Clashes
3	B	41	0	0	14	0
3	C	41	0	0	12	0
3	D	41	0	0	13	0
4	A	28	0	38	0	0
5	A	1	0	0	0	0
All	All	6073	0	5970	121	0

The all-atom clashscore is defined as the number of clashes found per 1000 atoms (including hydrogen atoms). The all-atom clashscore for this structure is 10.

All (121) close contacts within the same asymmetric unit are listed below, sorted by their clash magnitude.

Atom-1	Atom-2	Interatomic distance (Å)	Clash overlap (Å)
3:B:203:7BU:F21B	3:B:203:7BU:C2B	2.42	0.95
3:C:203:7BU:F21D	3:C:203:7BU:C3C	2.44	0.93
3:D:203:7BU:C2B	3:D:203:7BU:F21B	2.41	0.93
3:D:203:7BU:F21D	3:D:203:7BU:C3C	2.46	0.92
3:A:203:7BU:C3C	3:A:203:7BU:F21D	2.46	0.90
3:C:203:7BU:C3A	3:C:203:7BU:F23B	2.52	0.87
3:A:203:7BU:F21B	3:A:203:7BU:C2B	2.53	0.85
3:C:203:7BU:F21B	3:C:203:7BU:C2B	2.54	0.82
1:C:24:ARG:HA	3:C:203:7BU:F22C	2.08	0.82
3:B:203:7BU:F21D	3:B:203:7BU:C3C	2.56	0.79
3:D:203:7BU:C3B	3:D:203:7BU:F21C	2.60	0.78
3:A:203:7BU:F23A	3:A:203:7BU:C3D	2.61	0.76
3:A:203:7BU:F21C	3:A:203:7BU:C3B	2.60	0.75
3:D:203:7BU:C3D	3:D:203:7BU:F23A	2.66	0.74
3:A:203:7BU:C3A	3:A:203:7BU:F23B	2.63	0.71
1:D:92:VAL:HG11	1:D:175:ILE:HD11	1.73	0.70
1:D:30:LEU:HD23	3:D:203:7BU:F23D	2.21	0.70
3:B:203:7BU:C3B	3:B:203:7BU:F21C	2.69	0.69
1:A:92:VAL:HG11	1:A:175:ILE:HD11	1.75	0.67
1:C:24:ARG:CA	3:C:203:7BU:F22C	2.72	0.67
1:B:92:VAL:HG11	1:B:175:ILE:HD11	1.75	0.67
3:D:203:7BU:F22D	3:D:203:7BU:C2D	2.71	0.67
3:B:203:7BU:C3A	3:B:203:7BU:F23B	2.71	0.66
3:B:203:7BU:F23A	3:B:203:7BU:C3D	2.72	0.65
3:C:203:7BU:F21C	3:C:203:7BU:C3B	2.74	0.65
1:A:26:THR:HB	1:A:63:HIS:HD1	1.62	0.65
1:B:26:THR:HB	1:B:63:HIS:HD1	1.62	0.64
1:C:92:VAL:HG11	1:C:175:ILE:HD11	1.78	0.64

Continued on next page...

Continued from previous page...

Atom-1	Atom-2	Interatomic distance (Å)	Clash overlap (Å)
1:C:26:THR:HB	1:C:63:HIS:HD1	1.62	0.64
1:D:24:ARG:HA	3:D:203:7BU:F22C	2.28	0.64
1:B:147:LEU:HD22	3:B:203:7BU:F22D	2.28	0.63
1:A:122:GLN:HE22	1:A:125:ARG:HH11	1.46	0.63
1:B:40:ILE:HD12	1:B:52:VAL:HG21	1.81	0.63
1:D:26:THR:HB	1:D:63:HIS:HD1	1.63	0.62
1:C:40:ILE:HD12	1:C:52:VAL:HG21	1.82	0.62
3:A:203:7BU:C2D	3:A:203:7BU:F22D	2.79	0.59
3:B:203:7BU:F22D	3:B:203:7BU:C2D	2.78	0.59
1:A:23:LEU:HB3	3:A:203:7BU:F21C	2.32	0.59
1:D:40:ILE:HD12	1:D:52:VAL:HG21	1.86	0.58
1:B:64:ARG:HG3	3:B:203:7BU:F22A	2.35	0.56
1:A:147:LEU:HD22	3:A:203:7BU:F22D	2.36	0.56
3:C:203:7BU:F23A	3:C:203:7BU:C3D	2.84	0.55
1:D:117:TRP:HB2	1:D:150:ILE:HD11	1.89	0.55
3:C:203:7BU:C2D	3:C:203:7BU:F22D	2.81	0.55
3:D:203:7BU:F22B	3:D:203:7BU:C3A	2.81	0.55
1:C:117:TRP:HB2	1:C:150:ILE:HD11	1.90	0.54
1:D:107:LEU:CD2	3:D:203:7BU:F21B	2.86	0.53
1:A:30:LEU:HD23	3:A:203:7BU:F23D	2.38	0.53
1:D:23:LEU:HB3	3:D:203:7BU:F21C	2.38	0.53
1:A:64:ARG:NH2	1:A:115:ASP:OD1	2.41	0.53
1:A:24:ARG:HA	3:A:203:7BU:F22C	2.39	0.53
1:B:23:LEU:O	3:B:203:7BU:F22C	2.57	0.53
1:D:95:LYS:HE2	1:D:95:LYS:HA	1.89	0.53
1:A:49:LEU:HD12	1:A:50:GLU:N	2.25	0.52
1:D:81:TYR:CZ	1:D:96:ILE:HG21	2.45	0.52
1:C:117:TRP:CB	1:C:150:ILE:HD11	2.39	0.52
1:D:117:TRP:CB	1:D:150:ILE:HD11	2.40	0.52
3:B:203:7BU:F22A	3:B:203:7BU:C2A	2.84	0.51
1:C:81:TYR:CZ	1:C:96:ILE:HG21	2.45	0.51
1:A:81:TYR:CZ	1:A:96:ILE:HG21	2.45	0.51
1:B:81:TYR:CZ	1:B:96:ILE:HG21	2.46	0.51
1:C:23:LEU:C	3:C:203:7BU:F22C	2.80	0.51
1:B:24:ARG:CD	1:B:159:ARG:HH12	2.24	0.50
1:D:20:TYR:CE1	1:D:70:LEU:HD13	2.46	0.50
1:B:70:LEU:HB2	1:B:71:PRO:HD3	1.93	0.50
1:C:23:LEU:HB3	3:C:203:7BU:F21C	2.41	0.50
1:A:70:LEU:HB2	1:A:71:PRO:HD3	1.94	0.50
1:B:24:ARG:HA	3:B:203:7BU:F22C	2.42	0.50
1:C:24:ARG:N	3:C:203:7BU:F22C	2.75	0.49

Continued on next page...

Continued from previous page...

Atom-1	Atom-2	Interatomic distance (Å)	Clash overlap (Å)
1:B:24:ARG:HD3	1:B:159:ARG:HH12	1.77	0.49
1:A:20:TYR:CE1	1:A:70:LEU:HD13	2.48	0.49
1:B:20:TYR:CE1	1:B:70:LEU:HD13	2.48	0.49
1:C:20:TYR:CE1	1:C:70:LEU:HD13	2.47	0.49
1:B:23:LEU:HB3	3:B:203:7BU:F21C	2.43	0.48
1:B:117:TRP:HB2	1:B:150:ILE:HD11	1.96	0.48
1:A:117:TRP:HB2	1:A:150:ILE:HD11	1.95	0.48
1:C:70:LEU:HB2	1:C:71:PRO:HD3	1.95	0.47
1:D:70:LEU:HB2	1:D:71:PRO:HD3	1.97	0.47
1:B:67:ALA:HB1	3:B:203:7BU:F22B	2.44	0.47
1:C:71:PRO:O	1:C:75:LEU:HD23	2.14	0.47
1:A:117:TRP:CB	1:A:150:ILE:HD11	2.44	0.47
1:B:40:ILE:CD1	1:B:52:VAL:HG21	2.45	0.47
1:B:71:PRO:O	1:B:75:LEU:HD23	2.15	0.47
1:A:71:PRO:O	1:A:75:LEU:HD23	2.15	0.46
1:D:71:PRO:O	1:D:75:LEU:HD23	2.14	0.46
3:D:203:7BU:C3A	3:D:203:7BU:F23B	2.90	0.45
1:D:75:LEU:HD22	1:D:104:ILE:HD13	1.99	0.45
1:A:75:LEU:HD22	1:A:104:ILE:HD13	1.98	0.45
1:A:19:GLN:HB3	1:A:70:LEU:HD21	1.99	0.45
1:B:117:TRP:CB	1:B:150:ILE:HD11	2.47	0.45
3:A:203:7BU:C2A	3:A:203:7BU:F22A	2.92	0.45
1:B:75:LEU:HD22	1:B:104:ILE:HD13	1.99	0.45
1:B:23:LEU:C	3:B:203:7BU:F22C	2.85	0.44
1:C:75:LEU:HD22	1:C:104:ILE:HD13	1.98	0.44
1:B:75:LEU:HD22	1:B:104:ILE:CD1	2.47	0.44
1:A:66:LEU:HA	1:A:69:GLU:HG3	1.99	0.44
1:B:64:ARG:NH2	1:B:115:ASP:OD1	2.42	0.44
1:D:19:GLN:HB3	1:D:70:LEU:HD21	1.98	0.44
1:C:23:LEU:O	3:C:203:7BU:F22C	2.66	0.44
3:D:203:7BU:C2A	3:D:203:7BU:F22A	2.96	0.43
1:A:75:LEU:HD22	1:A:104:ILE:CD1	2.47	0.43
1:B:19:GLN:HB3	1:B:70:LEU:HD21	1.99	0.43
1:B:66:LEU:HA	1:B:69:GLU:HG3	2.00	0.42
1:C:154:THR:O	1:C:158:GLY:N	2.52	0.42
1:B:154:THR:O	1:B:158:GLY:N	2.52	0.42
1:C:19:GLN:HB3	1:C:70:LEU:HD21	2.01	0.42
1:D:75:LEU:HD22	1:D:104:ILE:CD1	2.49	0.42
1:A:154:THR:O	1:A:158:GLY:N	2.52	0.42
1:C:40:ILE:CD1	1:C:52:VAL:HG21	2.46	0.42
1:A:147:LEU:HD21	3:A:203:7BU:F23D	2.50	0.42

Continued on next page...

Continued from previous page...

Atom-1	Atom-2	Interatomic distance (Å)	Clash overlap (Å)
1:D:154:THR:O	1:D:158:GLY:N	2.52	0.42
1:A:49:LEU:C	1:A:49:LEU:HD12	2.40	0.42
1:D:66:LEU:HA	1:D:69:GLU:HG3	2.02	0.41
1:B:24:ARG:HD3	1:B:159:ARG:NH1	2.35	0.41
1:C:75:LEU:HD22	1:C:104:ILE:CD1	2.49	0.41
1:C:66:LEU:HA	1:C:69:GLU:HG3	2.03	0.41
1:D:19:GLN:CB	1:D:70:LEU:HD21	2.51	0.41
1:B:23:LEU:HD23	1:B:23:LEU:HA	1.91	0.40
1:C:17:ILE:HD12	1:C:169:ILE:CD1	2.52	0.40
1:B:175:ILE:O	1:D:92:VAL:HB	2.22	0.40
1:D:64:ARG:HG3	3:D:203:7BU:F22A	2.52	0.40

There are no symmetry-related clashes.

5.3 Torsion angles [i](#)

5.3.1 Protein backbone [i](#)

In the following table, the Percentiles column shows the percent Ramachandran outliers of the chain as a percentile score with respect to all X-ray entries followed by that with respect to entries of similar resolution.

The Analysed column shows the number of residues for which the backbone conformation was analysed, and the total number of residues.

Mol	Chain	Analysed	Favoured	Allowed	Outliers	Percentiles	
1	A	172/174 (99%)	165 (96%)	7 (4%)	0	100	100
1	B	172/174 (99%)	166 (96%)	6 (4%)	0	100	100
1	C	172/174 (99%)	166 (96%)	6 (4%)	0	100	100
1	D	172/174 (99%)	166 (96%)	6 (4%)	0	100	100
All	All	688/696 (99%)	663 (96%)	25 (4%)	0	100	100

There are no Ramachandran outliers to report.

5.3.2 Protein sidechains [i](#)

In the following table, the Percentiles column shows the percent sidechain outliers of the chain as a percentile score with respect to all X-ray entries followed by that with respect to entries of similar resolution.

The Analysed column shows the number of residues for which the sidechain conformation was analysed, and the total number of residues.

Mol	Chain	Analysed	Rotameric	Outliers	Percentiles	
1	A	157/158 (99%)	150 (96%)	7 (4%)	27	61
1	B	157/158 (99%)	149 (95%)	8 (5%)	24	57
1	C	157/158 (99%)	151 (96%)	6 (4%)	33	65
1	D	157/158 (99%)	153 (98%)	4 (2%)	47	75
All	All	628/632 (99%)	603 (96%)	25 (4%)	31	64

All (25) residues with a non-rotameric sidechain are listed below:

Mol	Chain	Res	Type
1	A	7	ARG
1	A	34	PHE
1	A	57	GLU
1	A	73	LEU
1	A	75	LEU
1	A	106	TRP
1	A	174	THR
1	B	4	ASP
1	B	7	ARG
1	B	34	PHE
1	B	43	LYS
1	B	57	GLU
1	B	75	LEU
1	B	102	LYS
1	B	174	THR
1	C	7	ARG
1	C	34	PHE
1	C	57	GLU
1	C	75	LEU
1	C	149	LYS
1	C	174	THR
1	D	34	PHE
1	D	57	GLU
1	D	75	LEU
1	D	174	THR

Some sidechains can be flipped to improve hydrogen bonding and reduce clashes. All (8) such sidechains are listed below:

Mol	Chain	Res	Type
1	A	19	GLN
1	A	51	GLN
1	A	113	GLN
1	A	122	GLN
1	B	19	GLN
1	B	113	GLN
1	C	19	GLN
1	D	19	GLN

5.3.3 RNA [i](#)

There are no RNA molecules in this entry.

5.4 Non-standard residues in protein, DNA, RNA chains [i](#)

There are no non-standard protein/DNA/RNA residues in this entry.

5.5 Carbohydrates [i](#)

There are no monosaccharides in this entry.

5.6 Ligand geometry [i](#)

Of 13 ligands modelled in this entry, 8 are monoatomic - leaving 5 for Mogul analysis.

In the following table, the Counts columns list the number of bonds (or angles) for which Mogul statistics could be retrieved, the number of bonds (or angles) that are observed in the model and the number of bonds (or angles) that are defined in the Chemical Component Dictionary. The Link column lists molecule types, if any, to which the group is linked. The Z score for a bond length (or angle) is the number of standard deviations the observed value is removed from the expected value. A bond length (or angle) with $|Z| > 2$ is considered an outlier worth inspection. RMSZ is the root-mean-square of all Z scores of the bond lengths (or angles).

Mol	Type	Chain	Res	Link	Bond lengths			Bond angles		
					Counts	RMSZ	$\# Z > 2$	Counts	RMSZ	$\# Z > 2$
4	2PE	A	204	-	27,27,27	0.54	0	26,26,26	0.27	0
3	7BU	C	203	1	40,48,48	2.31	12 (30%)	43,86,86	1.98	8 (18%)
3	7BU	B	203	1	40,48,48	2.33	12 (30%)	43,86,86	1.52	11 (25%)
3	7BU	A	203	1	40,48,48	2.32	12 (30%)	43,86,86	1.39	7 (16%)
3	7BU	D	203	1	40,48,48	2.30	12 (30%)	43,86,86	1.68	7 (16%)

In the following table, the Chirals column lists the number of chiral outliers, the number of chiral centers analysed, the number of these observed in the model and the number defined in the Chemical Component Dictionary. Similar counts are reported in the Torsion and Rings columns. '-' means no outliers of that kind were identified.

Mol	Type	Chain	Res	Link	Chirals	Torsions	Rings
4	2PE	A	204	-	-	13/25/25/25	-
3	7BU	C	203	1	-	11/24/80/80	-
3	7BU	B	203	1	-	9/24/80/80	-
3	7BU	A	203	1	-	9/24/80/80	-
3	7BU	D	203	1	-	12/24/80/80	-

All (48) bond length outliers are listed below:

Mol	Chain	Res	Type	Atoms	Z	Observed(Å)	Ideal(Å)
3	B	203	7BU	C4B-CHC	6.26	1.50	1.38
3	C	203	7BU	C4B-CHC	6.19	1.50	1.38
3	B	203	7BU	C1D-CHD	6.14	1.49	1.38
3	A	203	7BU	C4B-CHC	6.07	1.49	1.38
3	D	203	7BU	C1D-CHD	5.73	1.49	1.38
3	D	203	7BU	C4B-CHC	5.71	1.49	1.38
3	C	203	7BU	C1D-CHD	5.65	1.49	1.38
3	D	203	7BU	C1A-CHA	5.61	1.48	1.38
3	A	203	7BU	C1D-CHD	5.30	1.48	1.38
3	C	203	7BU	C1A-CHA	5.16	1.48	1.38
3	A	203	7BU	C4A-CHB	5.13	1.48	1.38
3	D	203	7BU	C4A-CHB	5.11	1.47	1.38
3	C	203	7BU	C4A-CHB	4.98	1.47	1.38
3	B	203	7BU	C1A-CHA	4.88	1.47	1.38
3	B	203	7BU	C4A-CHB	4.87	1.47	1.38
3	A	203	7BU	C1A-CHA	4.60	1.47	1.38
3	A	203	7BU	C1A-NA1	-4.34	1.31	1.37
3	B	203	7BU	C1A-NA1	-4.09	1.32	1.37
3	B	203	7BU	C4A-NA1	-3.79	1.32	1.37
3	C	203	7BU	C4A-NA1	-3.62	1.32	1.37
3	C	203	7BU	C1A-NA1	-3.59	1.32	1.37
3	D	203	7BU	C1A-NA1	-3.45	1.32	1.37
3	A	203	7BU	C1D-ND4	-3.34	1.32	1.37
3	D	203	7BU	C4A-NA1	-3.25	1.33	1.37
3	C	203	7BU	C1D-ND4	-3.09	1.33	1.37
3	C	203	7BU	C1C-CHC	3.09	1.51	1.44
3	A	203	7BU	C4A-NA1	-3.01	1.33	1.37
3	D	203	7BU	C1D-ND4	-2.88	1.33	1.37
3	A	203	7BU	C1C-CHC	2.73	1.50	1.44

Continued on next page...

Continued from previous page...

Mol	Chain	Res	Type	Atoms	Z	Observed(Å)	Ideal(Å)
3	A	203	7BU	C4D-ND4	-2.68	1.32	1.35
3	D	203	7BU	C1C-CHC	2.56	1.49	1.44
3	C	203	7BU	C4D-CHA	2.53	1.49	1.44
3	D	203	7BU	C4D-CHA	2.46	1.49	1.44
3	A	203	7BU	C3D-C4D	-2.46	1.35	1.40
3	B	203	7BU	C4D-CHA	2.41	1.49	1.44
3	B	203	7BU	C4C-CHD	2.38	1.49	1.44
3	B	203	7BU	C1B-NB2	-2.23	1.33	1.35
3	C	203	7BU	C3D-C4D	-2.20	1.36	1.40
3	B	203	7BU	C1C-CHC	2.18	1.49	1.44
3	C	203	7BU	C1B-NB2	-2.15	1.33	1.35
3	D	203	7BU	C4C-NC3	-2.11	1.33	1.35
3	D	203	7BU	C1B-NB2	-2.11	1.33	1.35
3	B	203	7BU	C2C-C1C	-2.09	1.36	1.40
3	A	203	7BU	C3C-C4C	-2.07	1.36	1.40
3	B	203	7BU	C1C-NC3	-2.06	1.33	1.35
3	A	203	7BU	C1B-CHB	2.05	1.48	1.44
3	D	203	7BU	C3C-C4C	-2.05	1.36	1.40
3	C	203	7BU	C4C-CHD	2.05	1.48	1.44

All (33) bond angle outliers are listed below:

Mol	Chain	Res	Type	Atoms	Z	Observed(°)	Ideal(°)
3	C	203	7BU	C1FC-CHC-C1C	6.38	123.04	119.79
3	C	203	7BU	C1FA-CHA-C4D	6.00	122.84	119.79
3	D	203	7BU	C1FC-CHC-C1C	5.37	122.52	119.79
3	B	203	7BU	C1FA-CHA-C4D	4.60	122.13	119.79
3	D	203	7BU	C1FD-CHD-C4C	-4.36	117.58	119.79
3	C	203	7BU	C1FD-CHD-C4C	-3.80	117.86	119.79
3	C	203	7BU	C4B-CHC-C1C	-3.70	117.50	125.76
3	C	203	7BU	F22B-C1FB-CHB	-3.40	105.28	112.81
3	C	203	7BU	C1FB-CHB-C1B	-3.01	118.26	119.79
3	A	203	7BU	F22D-C1FD-CHD	-2.96	106.28	112.81
3	A	203	7BU	F23A-C1FA-CHA	-2.85	106.52	112.81
3	D	203	7BU	F23B-C1FB-CHB	-2.80	106.63	112.81
3	B	203	7BU	C1FC-CHC-C1C	-2.73	118.40	119.79
3	C	203	7BU	C1A-CHA-C4D	-2.67	119.81	125.76
3	B	203	7BU	F21B-C1FB-CHB	-2.65	106.96	112.81
3	A	203	7BU	F21A-C1FA-CHA	-2.58	107.11	112.81
3	A	203	7BU	C4B-CHC-C1C	-2.54	120.08	125.76
3	D	203	7BU	F22B-C1FB-CHB	-2.47	107.35	112.81
3	B	203	7BU	F22B-C1FB-CHB	-2.33	107.66	112.81

Continued on next page...

Continued from previous page...

Mol	Chain	Res	Type	Atoms	Z	Observed(°)	Ideal(°)
3	B	203	7BU	F22C-C1FC-CHC	-2.31	107.70	112.81
3	D	203	7BU	C4B-CHC-C1C	-2.26	120.72	125.76
3	B	203	7BU	C4B-CHC-C1C	-2.20	120.84	125.76
3	A	203	7BU	F21C-C1FC-CHC	-2.16	108.03	112.81
3	C	203	7BU	F22D-C1FD-CHD	-2.14	108.08	112.81
3	D	203	7BU	F22D-C1FD-CHD	-2.13	108.10	112.81
3	A	203	7BU	F22A-C1FA-CHA	-2.12	108.12	112.81
3	A	203	7BU	F21B-C1FB-CHB	-2.08	108.22	112.81
3	B	203	7BU	F22D-C1FD-CHD	-2.07	108.25	112.81
3	B	203	7BU	F21A-C1FA-CHA	-2.05	108.28	112.81
3	B	203	7BU	F22A-C1FA-CHA	-2.04	108.29	112.81
3	B	203	7BU	C1A-CHA-C4D	-2.02	121.25	125.76
3	D	203	7BU	C1A-CHA-C4D	-2.02	121.26	125.76
3	B	203	7BU	C1D-CHD-C4C	-2.01	121.28	125.76

There are no chirality outliers.

All (54) torsion outliers are listed below:

Mol	Chain	Res	Type	Atoms
3	B	203	7BU	F21A-C1FA-CHA-C4D
3	B	203	7BU	F22A-C1FA-CHA-C4D
3	B	203	7BU	F23A-C1FA-CHA-C4D
3	B	203	7BU	F21B-C1FB-CHB-C1B
3	B	203	7BU	F22B-C1FB-CHB-C1B
3	B	203	7BU	F23B-C1FB-CHB-C1B
3	B	203	7BU	F21D-C1FD-CHD-C4C
3	B	203	7BU	F22D-C1FD-CHD-C4C
3	B	203	7BU	F23D-C1FD-CHD-C4C
3	C	203	7BU	F21A-C1FA-CHA-C4D
3	C	203	7BU	F22A-C1FA-CHA-C4D
3	C	203	7BU	F23A-C1FA-CHA-C4D
3	C	203	7BU	F21D-C1FD-CHD-C4C
3	C	203	7BU	F22D-C1FD-CHD-C4C
3	C	203	7BU	F23D-C1FD-CHD-C4C
3	A	203	7BU	F21A-C1FA-CHA-C4D
3	A	203	7BU	F22A-C1FA-CHA-C4D
3	A	203	7BU	F23A-C1FA-CHA-C4D
3	A	203	7BU	F21B-C1FB-CHB-C1B
3	A	203	7BU	F22B-C1FB-CHB-C1B
3	A	203	7BU	F23B-C1FB-CHB-C1B
3	A	203	7BU	F21D-C1FD-CHD-C4C
3	A	203	7BU	F22D-C1FD-CHD-C4C

Continued on next page...

Continued from previous page...

Mol	Chain	Res	Type	Atoms
3	A	203	7BU	F23D-C1FD-CHD-C4C
3	D	203	7BU	F21A-C1FA-CHA-C4D
3	D	203	7BU	F22A-C1FA-CHA-C4D
3	D	203	7BU	F23A-C1FA-CHA-C4D
3	D	203	7BU	F21B-C1FB-CHB-C1B
3	D	203	7BU	F22B-C1FB-CHB-C1B
3	D	203	7BU	F23B-C1FB-CHB-C1B
3	D	203	7BU	F21D-C1FD-CHD-C4C
3	D	203	7BU	F22D-C1FD-CHD-C4C
3	D	203	7BU	F23D-C1FD-CHD-C4C
4	A	204	2PE	O19-C20-C21-O22
4	A	204	2PE	O16-C17-C18-O19
4	A	204	2PE	O22-C23-C24-O25
3	C	203	7BU	F21B-C1FB-CHB-C1B
3	C	203	7BU	F22B-C1FB-CHB-C1B
3	D	203	7BU	F21C-C1FC-CHC-C1C
3	D	203	7BU	F22C-C1FC-CHC-C1C
3	D	203	7BU	F23C-C1FC-CHC-C1C
4	A	204	2PE	O25-C26-C27-O28
3	C	203	7BU	F23B-C1FB-CHB-C1B
3	C	203	7BU	F21C-C1FC-CHC-C1C
4	A	204	2PE	O7-C8-C9-O10
4	A	204	2PE	C21-C20-O19-C18
4	A	204	2PE	C14-C15-O16-C17
4	A	204	2PE	C18-C17-O16-C15
4	A	204	2PE	O10-C11-C12-O13
4	A	204	2PE	C20-C21-O22-C23
4	A	204	2PE	C9-C8-O7-C6
4	A	204	2PE	C11-C12-O13-C14
4	A	204	2PE	C2-C3-O4-C5
3	C	203	7BU	F23C-C1FC-CHC-C1C

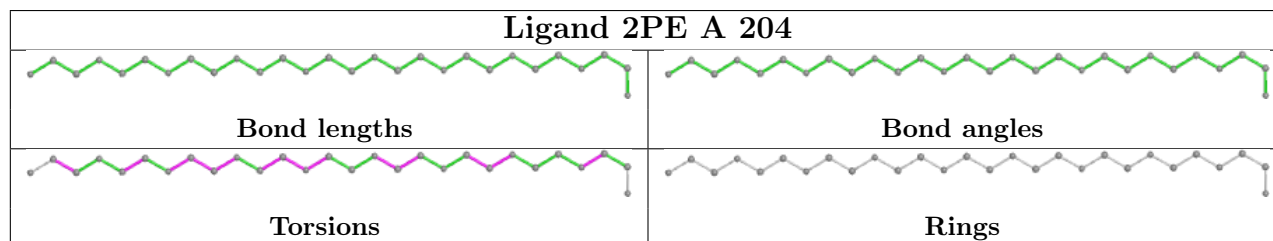
There are no ring outliers.

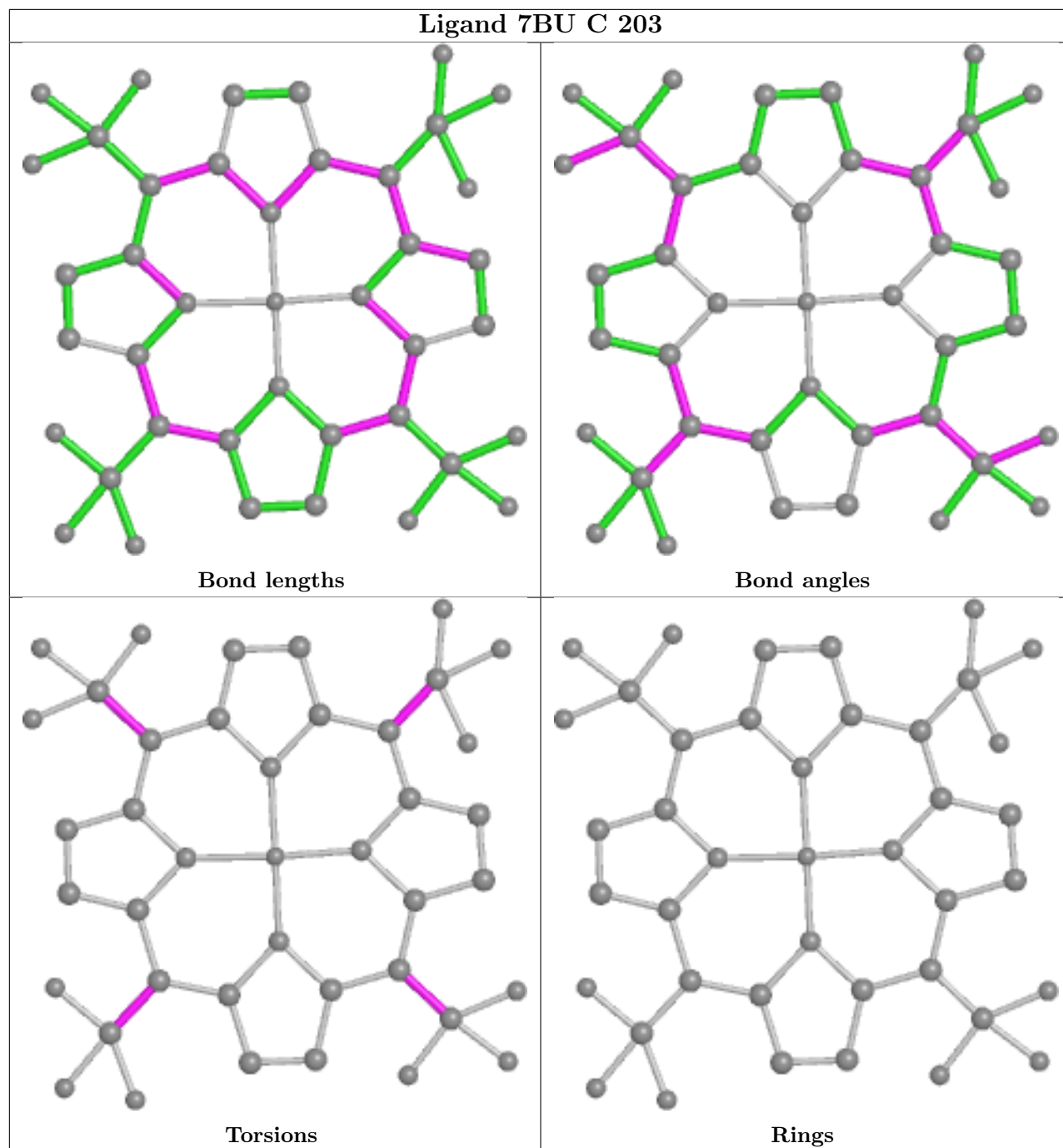
4 monomers are involved in 51 short contacts:

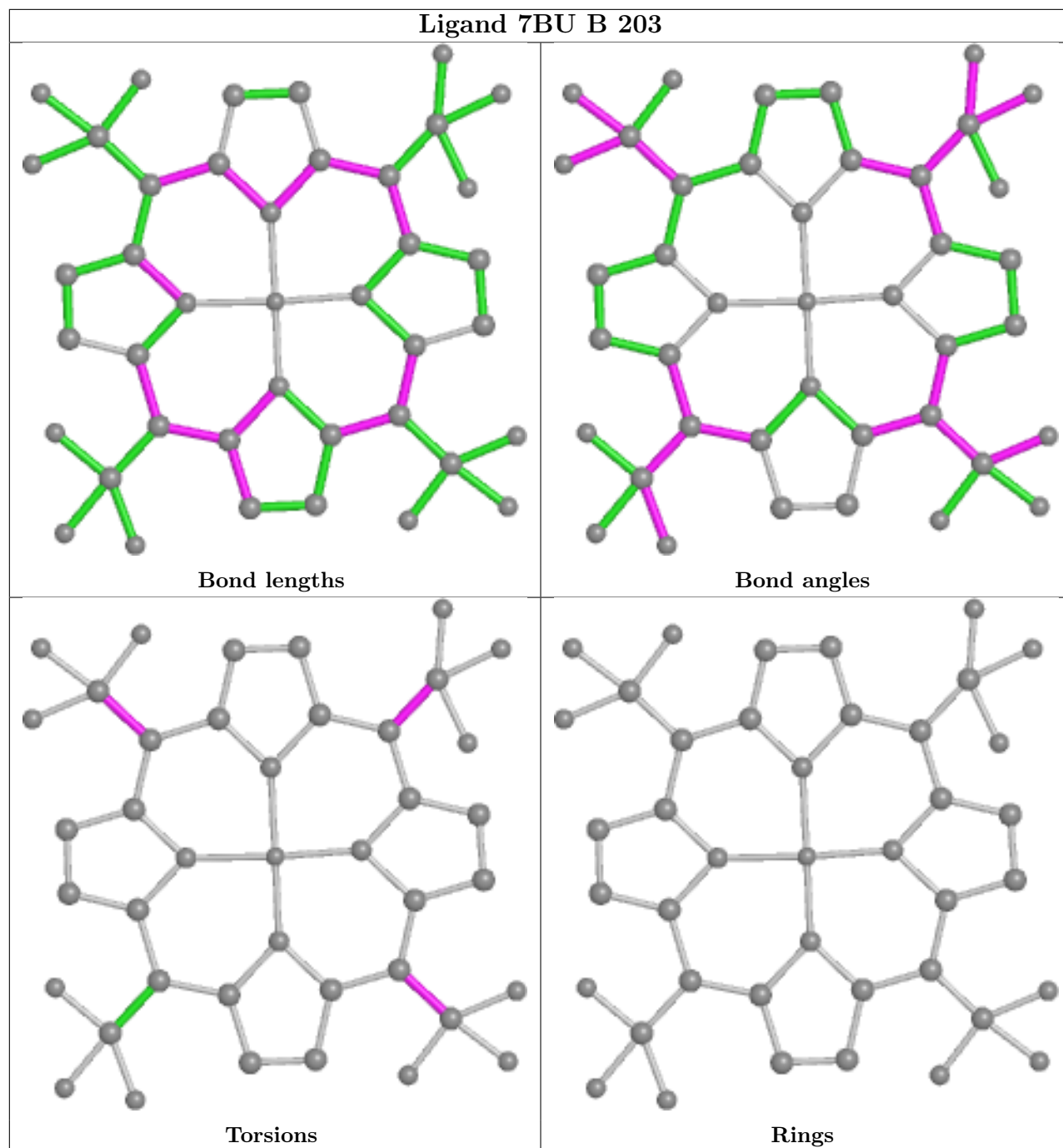
Mol	Chain	Res	Type	Clashes	Symm-Clashes
3	C	203	7BU	12	0
3	B	203	7BU	14	0
3	A	203	7BU	12	0
3	D	203	7BU	13	0

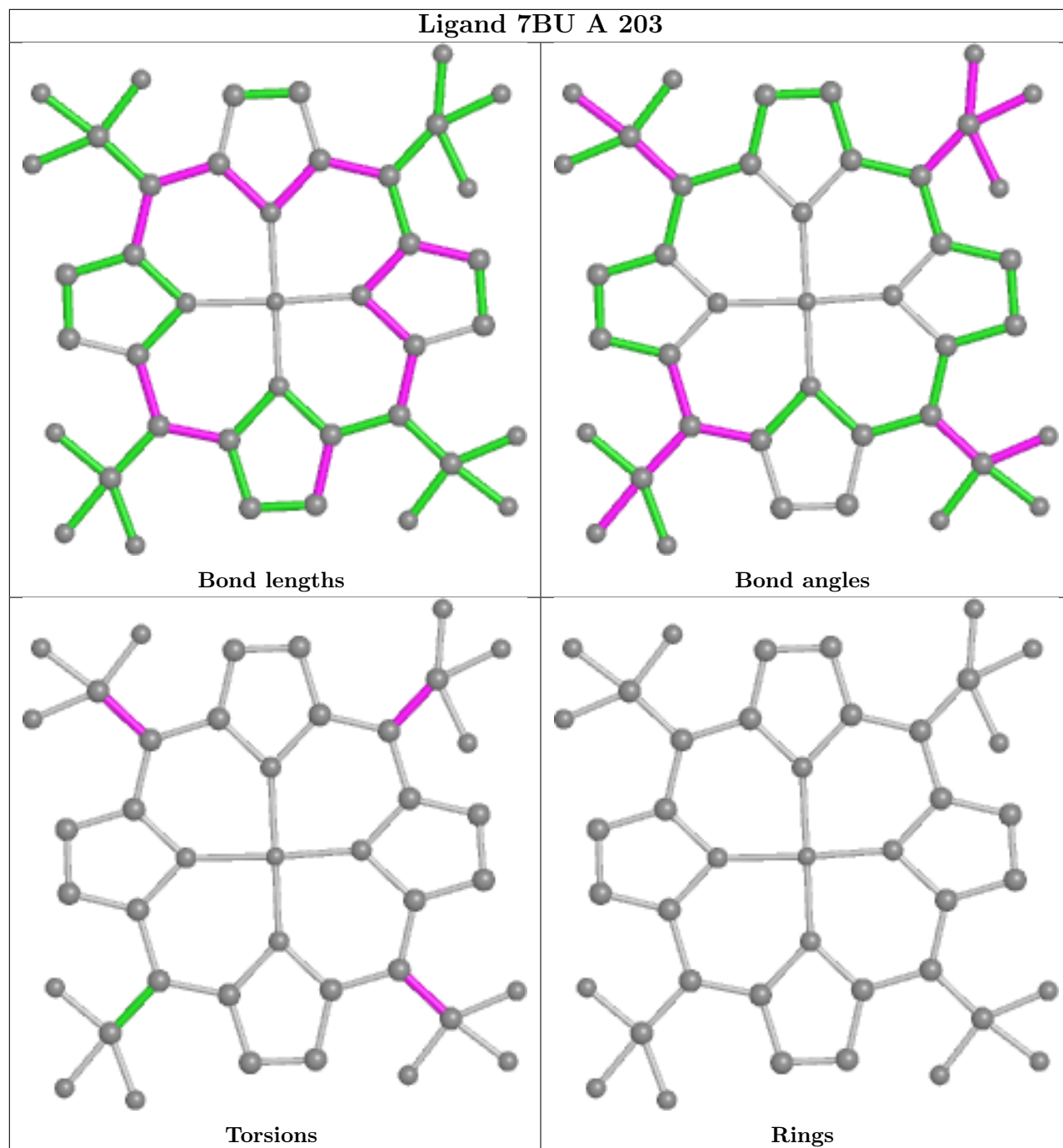
The following is a two-dimensional graphical depiction of Mogul quality analysis of bond lengths,

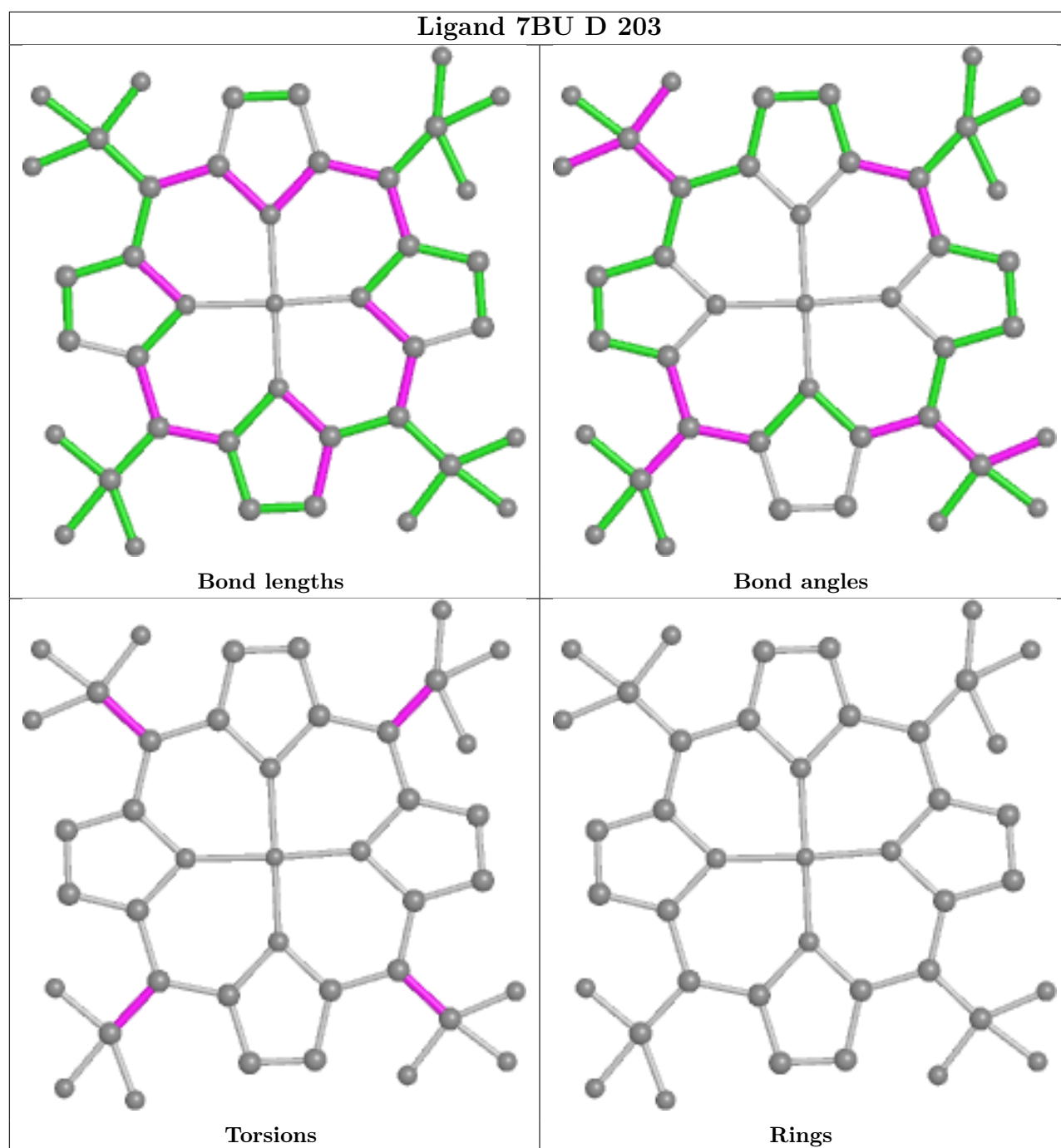
bond angles, torsion angles, and ring geometry for all instances of the Ligand of Interest. In addition, ligands with molecular weight > 250 and outliers as shown on the validation Tables will also be included. For torsion angles, if less than 5% of the Mogul distribution of torsion angles is within 10 degrees of the torsion angle in question, then that torsion angle is considered an outlier. Any bond that is central to one or more torsion angles identified as an outlier by Mogul will be highlighted in the graph. For rings, the root-mean-square deviation (RMSD) between the ring in question and similar rings identified by Mogul is calculated over all ring torsion angles. If the average RMSD is greater than 60 degrees and the minimal RMSD between the ring in question and any Mogul-identified rings is also greater than 60 degrees, then that ring is considered an outlier. The outliers are highlighted in purple. The color gray indicates Mogul did not find sufficient equivalents in the CSD to analyse the geometry.











5.7 Other polymers [i](#)

There are no such residues in this entry.

5.8 Polymer linkage issues [i](#)

There are no chain breaks in this entry.

6 Fit of model and data [i](#)

6.1 Protein, DNA and RNA chains [i](#)

In the following table, the column labelled ‘#RSRZ> 2’ contains the number (and percentage) of RSRZ outliers, followed by percent RSRZ outliers for the chain as percentile scores relative to all X-ray entries and entries of similar resolution. The OWAB column contains the minimum, median, 95th percentile and maximum values of the occupancy-weighted average B-factor per residue. The column labelled ‘Q< 0.9’ lists the number of (and percentage) of residues with an average occupancy less than 0.9.

Mol	Chain	Analysed	<RSRZ>	#RSRZ>2	OWAB(Å ²)	Q<0.9
1	A	174/174 (100%)	-0.08	5 (2%) 51 45	116, 156, 198, 228	0
1	B	174/174 (100%)	0.01	4 (2%) 60 54	120, 157, 207, 233	0
1	C	174/174 (100%)	0.01	3 (1%) 70 64	130, 160, 216, 240	0
1	D	174/174 (100%)	-0.09	4 (2%) 60 54	109, 152, 209, 221	0
All	All	696/696 (100%)	-0.04	16 (2%) 60 54	109, 157, 210, 240	0

All (16) RSRZ outliers are listed below:

Mol	Chain	Res	Type	RSRZ
1	B	133	LYS	3.7
1	B	124	PHE	3.1
1	A	177	GLY	3.0
1	A	144	GLU	2.8
1	B	117	TRP	2.6
1	A	56	ILE	2.3
1	C	44	GLY	2.3
1	D	135	SER	2.2
1	D	57	GLU	2.2
1	A	132	ASP	2.2
1	D	121	PHE	2.1
1	B	134	ASP	2.1
1	A	131	GLY	2.1
1	C	134	ASP	2.1
1	C	157	THR	2.1
1	D	157	THR	2.1

6.2 Non-standard residues in protein, DNA, RNA chains [i](#)

There are no non-standard protein/DNA/RNA residues in this entry.

6.3 Carbohydrates

There are no monosaccharides in this entry.

6.4 Ligands

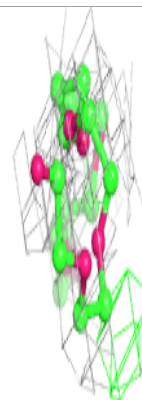
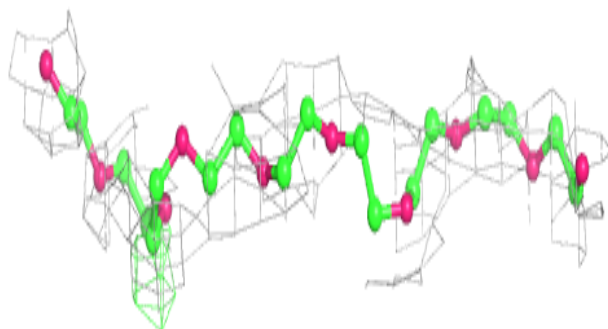
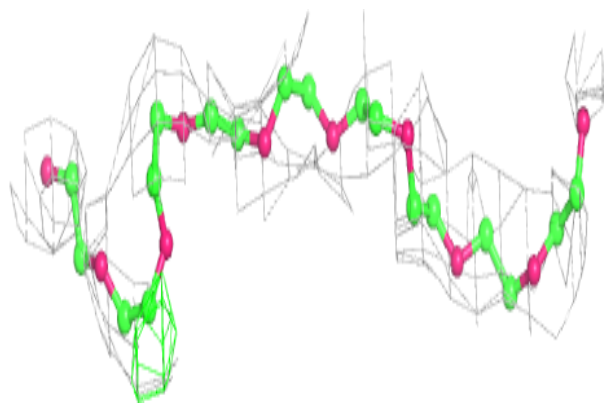
In the following table, the Atoms column lists the number of modelled atoms in the group and the number defined in the chemical component dictionary. The B-factors column lists the minimum, median, 95th percentile and maximum values of B factors of atoms in the group. The column labelled 'Q< 0.9' lists the number of atoms with occupancy less than 0.9.

Mol	Type	Chain	Res	Atoms	RSCC	RSR	B-factors(Å ²)	Q<0.9
4	2PE	A	204	28/28	0.57	0.54	169,176,179,180	0
3	7BU	C	203	41/41	0.93	0.24	137,142,153,157	0
3	7BU	B	203	41/41	0.94	0.22	130,139,149,152	0
3	7BU	A	203	41/41	0.94	0.25	132,138,149,151	0
3	7BU	D	203	41/41	0.94	0.34	126,132,142,143	0
2	ZN	D	202	1/1	0.98	0.07	106,106,106,106	0
2	ZN	B	201	1/1	0.98	0.10	112,112,112,112	0
2	ZN	C	202	1/1	0.99	0.08	120,120,120,120	0
2	ZN	A	202	1/1	0.99	0.14	112,112,112,112	0
2	ZN	C	201	1/1	0.99	0.10	113,113,113,113	0
2	ZN	A	201	1/1	0.99	0.08	110,110,110,110	0
2	ZN	D	201	1/1	0.99	0.10	111,111,111,111	0
2	ZN	B	202	1/1	0.99	0.12	115,115,115,115	0

The following is a graphical depiction of the model fit to experimental electron density of all instances of the Ligand of Interest. In addition, ligands with molecular weight > 250 and outliers as shown on the geometry validation Tables will also be included. Each fit is shown from different orientation to approximate a three-dimensional view.

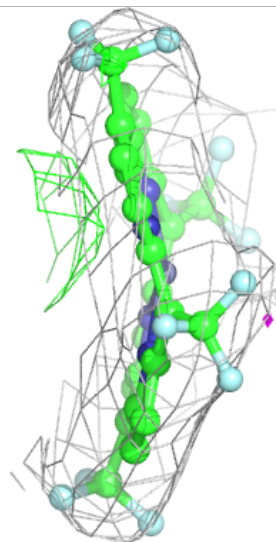
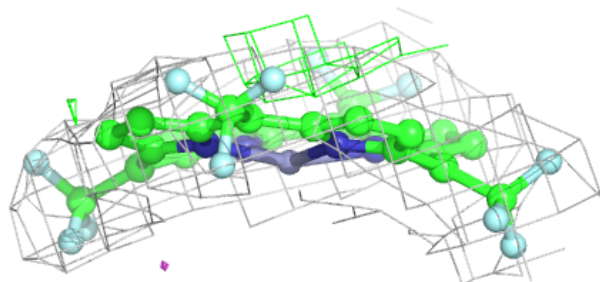
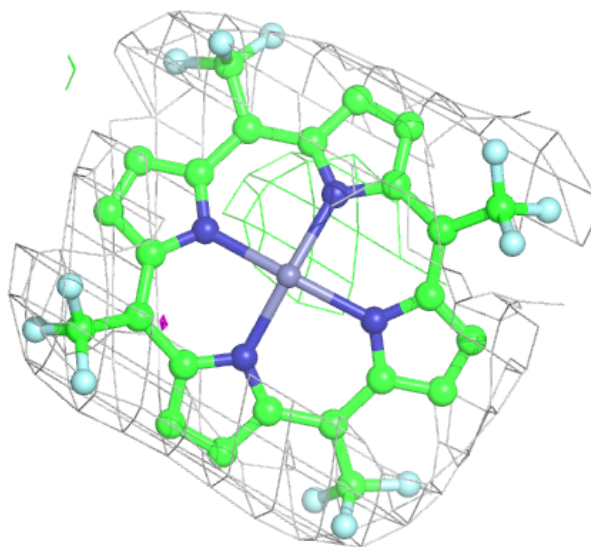
Electron density around 2PE A 204:

$2mF_o-DF_c$ (at 0.7 rmsd) in gray
 mF_o-DF_c (at 3 rmsd) in purple (negative)
and green (positive)



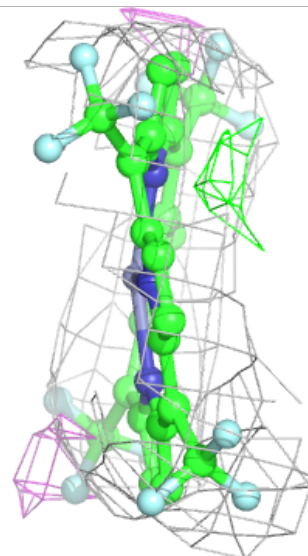
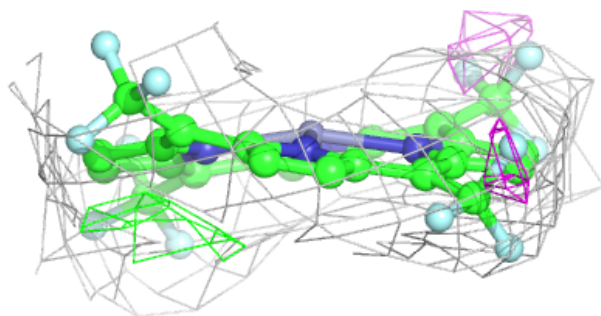
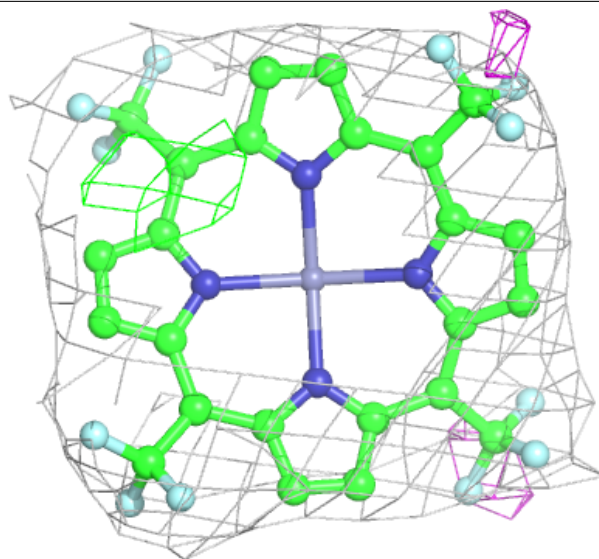
Electron density around 7BU C 203:

$2mF_o-DF_c$ (at 0.7 rmsd) in gray
 mF_o-DF_c (at 3 rmsd) in purple (negative)
and green (positive)



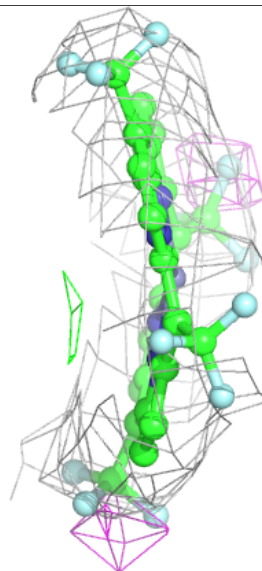
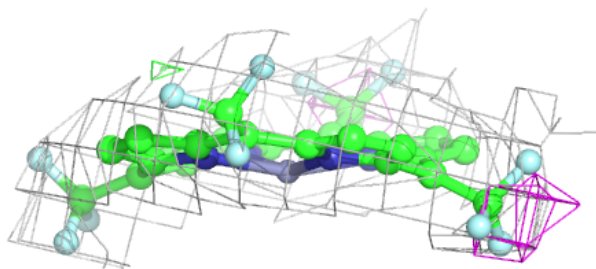
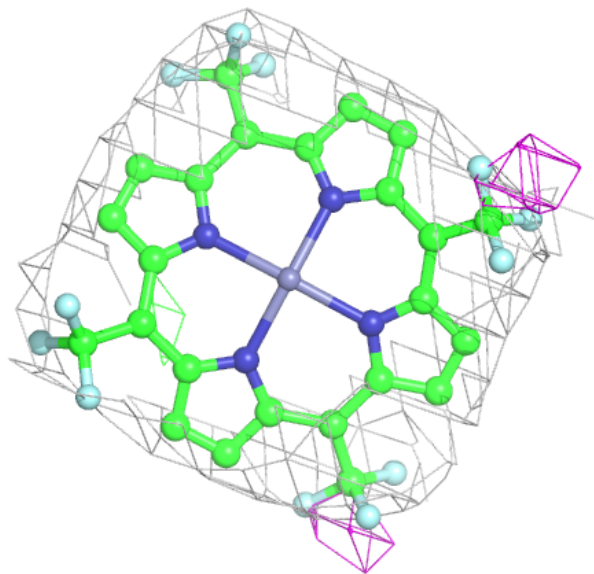
Electron density around 7BU B 203:

$2mF_o-DF_c$ (at 0.7 rmsd) in gray
 mF_o-DF_c (at 3 rmsd) in purple (negative)
and green (positive)



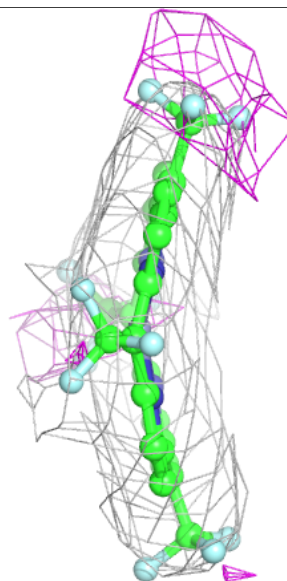
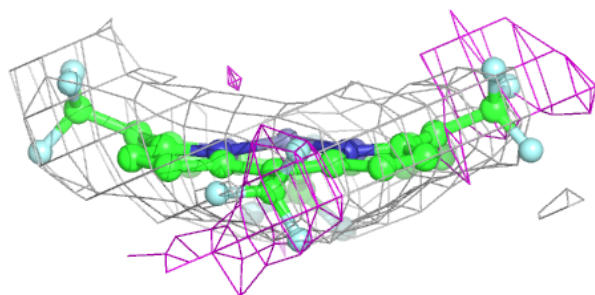
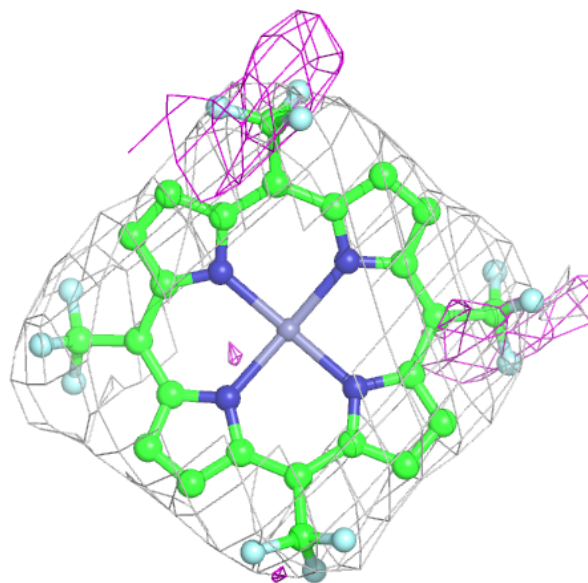
Electron density around 7BU A 203:

$2mF_o-DF_c$ (at 0.7 rmsd) in gray
 mF_o-DF_c (at 3 rmsd) in purple (negative)
and green (positive)



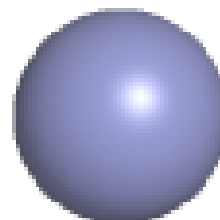
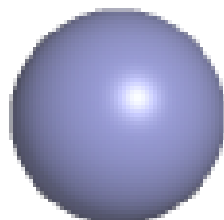
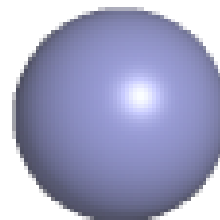
Electron density around 7BU D 203:

$2mF_o-DF_c$ (at 0.7 rmsd) in gray
 mF_o-DF_c (at 3 rmsd) in purple (negative)
and green (positive)



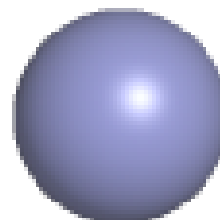
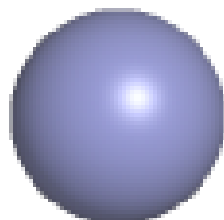
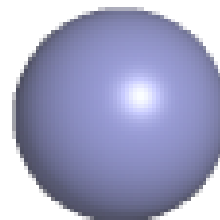
Electron density around ZN D 202:

$2mF_o-DF_c$ (at 0.7 rmsd) in gray
 mF_o-DF_c (at 3 rmsd) in purple (negative)
and green (positive)



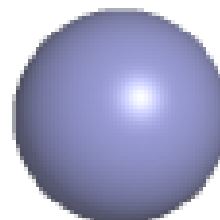
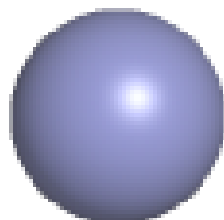
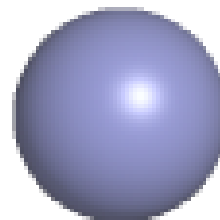
Electron density around ZN B 201:

$2mF_o-DF_c$ (at 0.7 rmsd) in gray
 mF_o-DF_c (at 3 rmsd) in purple (negative)
and green (positive)



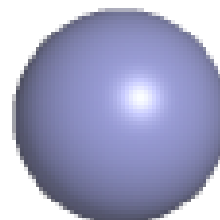
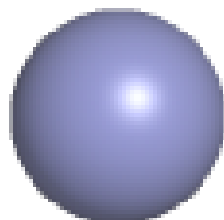
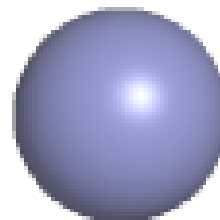
Electron density around ZN C 202:

$2mF_o-DF_c$ (at 0.7 rmsd) in gray
 mF_o-DF_c (at 3 rmsd) in purple (negative)
and green (positive)



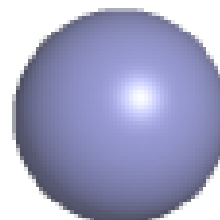
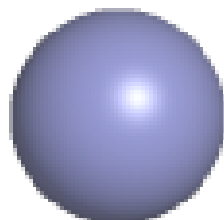
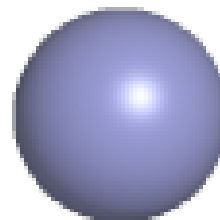
Electron density around ZN A 202:

$2mF_o-DF_c$ (at 0.7 rmsd) in gray
 mF_o-DF_c (at 3 rmsd) in purple (negative)
and green (positive)



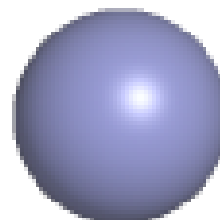
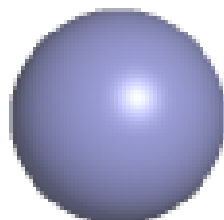
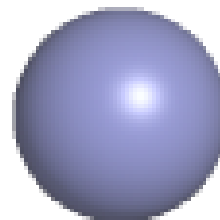
Electron density around ZN C 201:

$2mF_o-DF_c$ (at 0.7 rmsd) in gray
 mF_o-DF_c (at 3 rmsd) in purple (negative)
and green (positive)



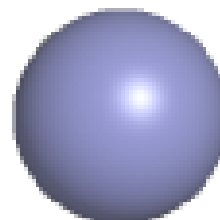
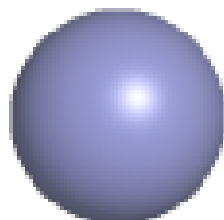
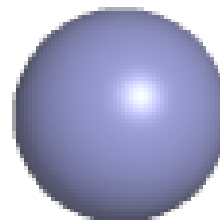
Electron density around ZN A 201:

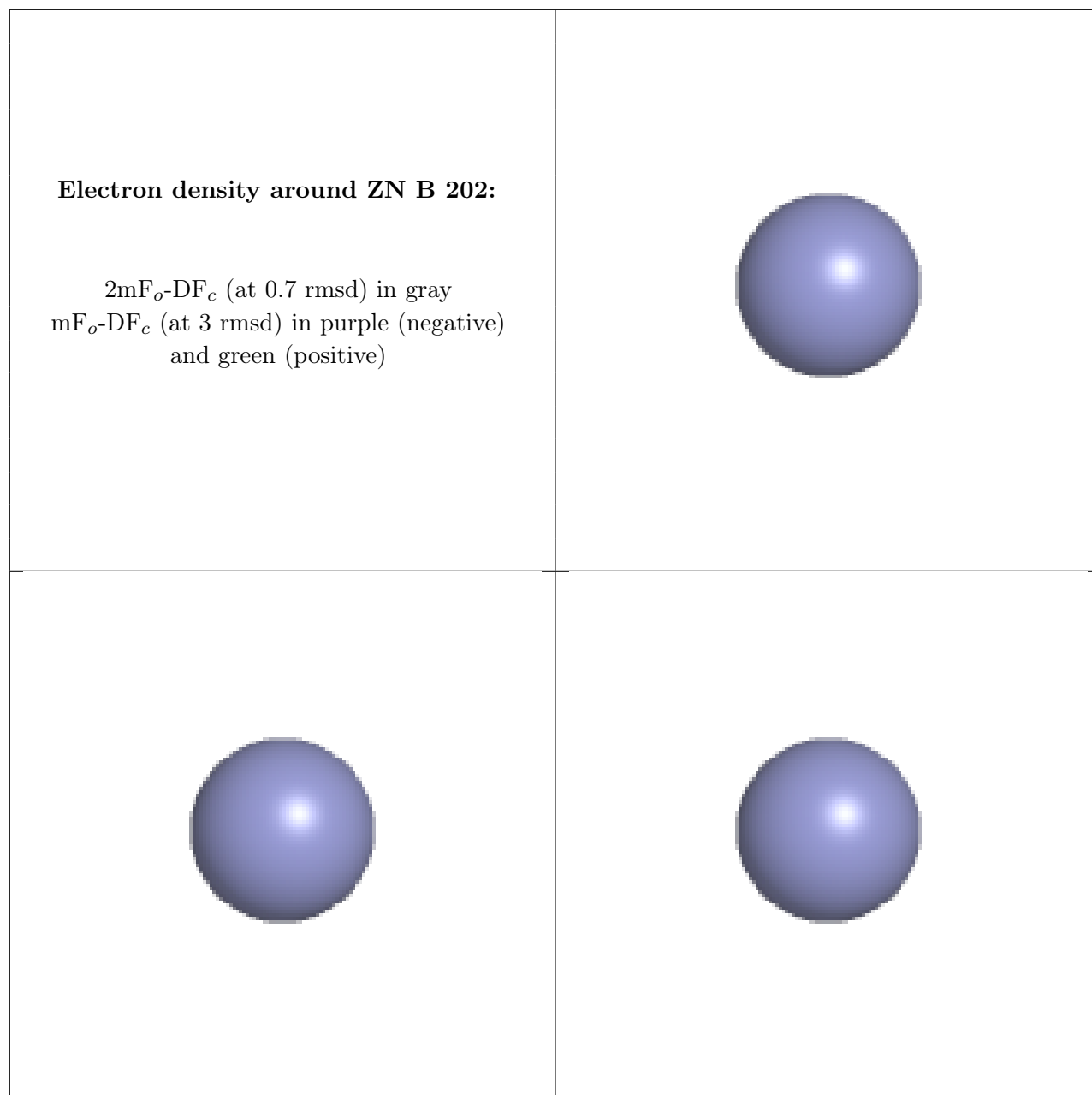
$2mF_o-DF_c$ (at 0.7 rmsd) in gray
 mF_o-DF_c (at 3 rmsd) in purple (negative)
and green (positive)



Electron density around ZN D 201:

$2mF_o-DF_c$ (at 0.7 rmsd) in gray
 mF_o-DF_c (at 3 rmsd) in purple (negative)
and green (positive)





6.5 Other polymers [i](#)

There are no such residues in this entry.