



Full wwPDB X-ray Structure Validation Report ⓘ

Aug 7, 2020 – 01:55 AM BST

PDB ID : 6JE2
Title : Ligand complex structure of GH10 family xylanase XynAF1, soaking for 80 minutes
Authors : Li, G.; Miao, Y.; Zhang, R.
Deposited on : 2019-02-02
Resolution : 1.22 Å(reported)

This is a Full wwPDB X-ray Structure Validation Report for a publicly released PDB entry.

We welcome your comments at validation@mail.wwpdb.org

A user guide is available at

<https://www.wwpdb.org/validation/2017/XrayValidationReportHelp>

with specific help available everywhere you see the ⓘ symbol.

The following versions of software and data (see [references ⓘ](#)) were used in the production of this report:

MolProbity : 4.02b-467
Mogul : 1.8.5 (274361), CSD as541be (2020)
Xtriage (Phenix) : 1.13
EDS : 2.13.1
Percentile statistics : 20191225.v01 (using entries in the PDB archive December 25th 2019)
Refmac : 5.8.0158
CCP4 : 7.0.044 (Gargrove)
Ideal geometry (proteins) : Engh & Huber (2001)
Ideal geometry (DNA, RNA) : Parkinson et al. (1996)
Validation Pipeline (wwPDB-VP) : 2.13.1

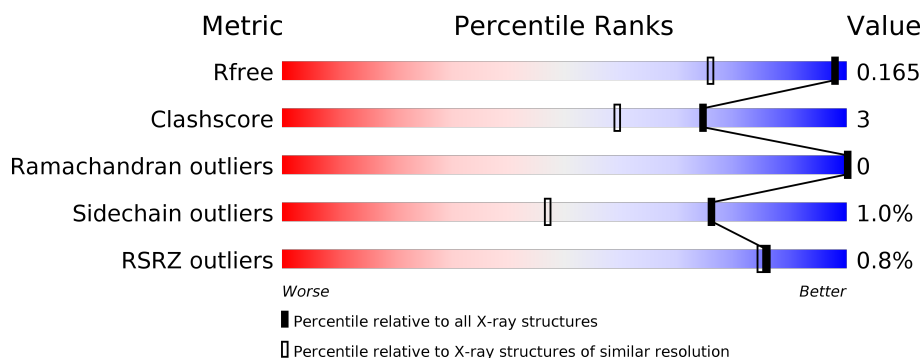
1 Overall quality at a glance

The following experimental techniques were used to determine the structure:

X-RAY DIFFRACTION

The reported resolution of this entry is 1.22 Å.

Percentile scores (ranging between 0-100) for global validation metrics of the entry are shown in the following graphic. The table shows the number of entries on which the scores are based.



Metric	Whole archive (#Entries)	Similar resolution (#Entries, resolution range(Å))
R_{free}	130704	1232 (1.24-1.20)
Clashscore	141614	1294 (1.24-1.20)
Ramachandran outliers	138981	1251 (1.24-1.20)
Sidechain outliers	138945	1250 (1.24-1.20)
RSRZ outliers	127900	1209 (1.24-1.20)

The table below summarises the geometric issues observed across the polymeric chains and their fit to the electron density. The red, orange, yellow and green segments on the lower bar indicate the fraction of residues that contain outliers for ≥ 3 , 2, 1 and 0 types of geometric quality criteria respectively. A grey segment represents the fraction of residues that are not modelled. The numeric value for each fraction is indicated below the corresponding segment, with a dot representing fractions $\leq 5\%$. The upper red bar (where present) indicates the fraction of residues that have poor fit to the electron density. The numeric value is given above the bar.

Mol	Chain	Length	Quality of chain
1	A	319	 91% 9%
1	B	319	 91% 9%
2	C	2	 50% 50%
2	D	2	 50% 50%
2	E	2	 50% 50%
2	F	2	 50% 50%

The following table lists non-polymeric compounds, carbohydrate monomers and non-standard residues in protein, DNA, RNA chains that are outliers for geometric or electron-density-fit criteria:

Mol	Type	Chain	Res	Chirality	Geometry	Clashes	Electron density
2	XYP	D	1	X	-	-	-
2	XYP	F	1	X	-	-	-
4	GOL	B	507	-	-	X	-
6	PEG	A	510	-	-	X	-

2 Entry composition

There are 7 unique types of molecules in this entry. The entry contains 5813 atoms, of which 0 are hydrogens and 0 are deuteriums.

In the tables below, the ZeroOcc column contains the number of atoms modelled with zero occupancy, the AltConf column contains the number of residues with at least one atom in alternate conformation and the Trace column contains the number of residues modelled with at most 2 atoms.

- Molecule 1 is a protein called Beta-xylanase.

Mol	Chain	Residues	Atoms					ZeroOcc	AltConf	Trace
			Total	C	N	O	S			
1	A	319	2505	1598	410	486	11	0	13	0
1	B	319	2521	1608	412	490	11	0	16	0

- Molecule 2 is an oligosaccharide called beta-D-xylopyranose-(1-4)-beta-D-xylopyranose.



Mol	Chain	Residues	Atoms			ZeroOcc	AltConf	Trace
			Total	C	O			
2	C	2	18	10	8	0	0	0
2	D	2	19	10	9	0	0	0
2	E	2	18	10	8	0	0	0
2	F	2	19	10	9	0	0	0

- Molecule 3 is 2-acetamido-2-deoxy-beta-D-glucopyranose (three-letter code: NAG) (formula: C₈H₁₅NO₆).



Mol	Chain	Residues	Atoms			ZeroOcc	AltConf	
			Total	C	N			O
3	A	1	Total	C	N	O	0	0
			14	8	1	5		
3	B	1	Total	C	N	O	0	0
			14	8	1	5		

- Molecule 4 is GLYCEROL (three-letter code: GOL) (formula: $C_3H_8O_3$).



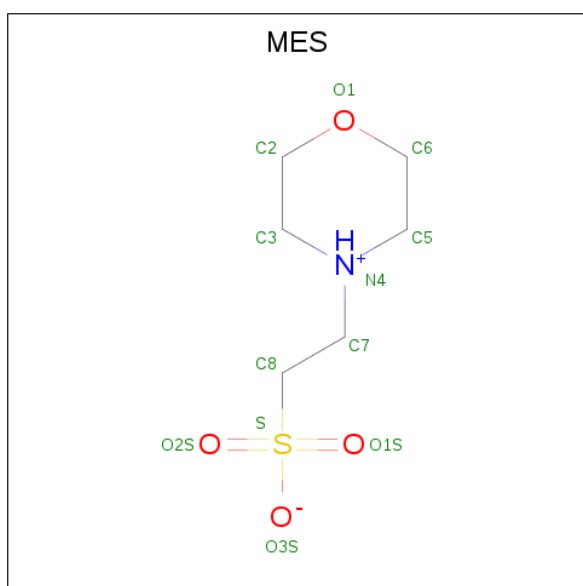
Mol	Chain	Residues	Atoms			ZeroOcc	AltConf
			Total	C	O		
4	A	1	Total	C	O	0	0
			6	3	3		
4	A	1	Total	C	O	0	0
			6	3	3		

Continued on next page...

Continued from previous page...

Mol	Chain	Residues	Atoms			ZeroOcc	AltConf
4	A	1	Total	C	O	0	0
			6	3	3		
4	B	1	Total	C	O	0	0
			6	3	3		
4	B	1	Total	C	O	0	0
			6	3	3		
4	B	1	Total	C	O	0	0
			6	3	3		

- Molecule 5 is 2-(N-MORPHOLINO)-ETHANESULFONIC ACID (three-letter code: MES) (formula: C₆H₁₃NO₄S).



Mol	Chain	Residues	Atoms					ZeroOcc	AltConf
5	A	1	Total	C	N	O	S	0	0
			12	6	1	4	1		

- Molecule 6 is DI(HYDROXYETHYL)ETHER (three-letter code: PEG) (formula: C₄H₁₀O₃).



Mol	Chain	Residues	Atoms		ZeroOcc	AltConf
6	A	1	Total	C O	0	0
			7	4 3		

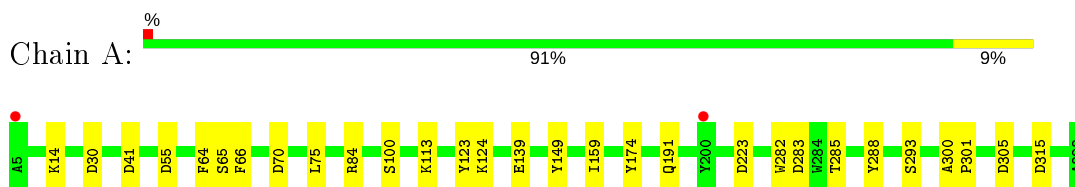
- Molecule 7 is water.

Mol	Chain	Residues	Atoms		ZeroOcc	AltConf
7	A	333	Total	O	0	0
			333	333		
7	B	297	Total	O	0	0
			297	297		

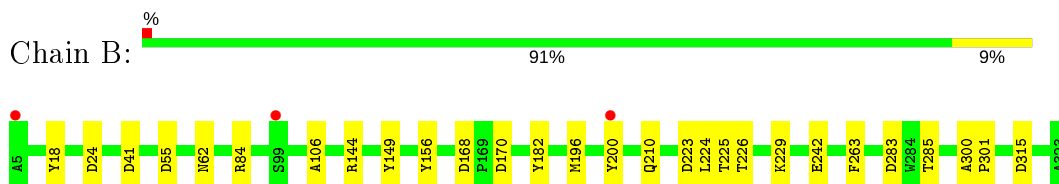
3 Residue-property plots [i](#)

These plots are drawn for all protein, RNA, DNA and oligosaccharide chains in the entry. The first graphic for a chain summarises the proportions of the various outlier classes displayed in the second graphic. The second graphic shows the sequence view annotated by issues in geometry and electron density. Residues are color-coded according to the number of geometric quality criteria for which they contain at least one outlier: green = 0, yellow = 1, orange = 2 and red = 3 or more. A red dot above a residue indicates a poor fit to the electron density ($RSRZ > 2$). Stretches of 2 or more consecutive residues without any outlier are shown as a green connector. Residues present in the sample, but not in the model, are shown in grey.

- Molecule 1: Beta-xylanase



- Molecule 1: Beta-xylanase



- Molecule 2: beta-D-xylopyranose-(1-4)-beta-D-xylopyranose



- Molecule 2: beta-D-xylopyranose-(1-4)-beta-D-xylopyranose



- Molecule 2: beta-D-xylopyranose-(1-4)-beta-D-xylopyranose



- Molecule 2: beta-D-xylopyranose-(1-4)-beta-D-xylopyranose



XIP1
XIP2

4 Data and refinement statistics

Property	Value	Source
Space group	P 1	Depositor
Cell constants a, b, c, α , β , γ	44.31Å 57.19Å 64.70Å 74.04° 80.74° 68.78°	Depositor
Resolution (Å)	62.07 – 1.22 35.47 – 1.22	Depositor EDS
% Data completeness (in resolution range)	91.7 (62.07-1.22) 91.8 (35.47-1.22)	Depositor EDS
R_{merge}	0.09	Depositor
R_{sym}	(Not available)	Depositor
$\langle I/\sigma(I) \rangle$ ¹	2.67 (at 1.22Å)	Xtrriage
Refinement program	REFMAC 5.8.0135	Depositor
R, R_{free}	0.137 , 0.155 0.149 , 0.165	Depositor DCC
R_{free} test set	7747 reflections (4.98%)	wwPDB-VP
Wilson B-factor (Å ²)	8.4	Xtrriage
Anisotropy	0.028	Xtrriage
Bulk solvent k_{sol} (e/Å ³), B_{sol} (Å ²)	0.40 , 50.7	EDS
L-test for twinning ²	$\langle L \rangle = 0.50$, $\langle L^2 \rangle = 0.33$	Xtrriage
Estimated twinning fraction	No twinning to report.	Xtrriage
F_o, F_c correlation	0.97	EDS
Total number of atoms	5813	wwPDB-VP
Average B, all atoms (Å ²)	10.0	wwPDB-VP

Xtrriage's analysis on translational NCS is as follows: *The largest off-origin peak in the Patterson function is 7.46% of the height of the origin peak. No significant pseudotranslation is detected.*

¹Intensities estimated from amplitudes.

²Theoretical values of $\langle |L| \rangle$, $\langle L^2 \rangle$ for acentric reflections are 0.5, 0.333 respectively for untwinned datasets, and 0.375, 0.2 for perfectly twinned datasets.

5 Model quality

5.1 Standard geometry

Bond lengths and bond angles in the following residue types are not validated in this section: XYP, GOL, PEG, NAG, MES

The Z score for a bond length (or angle) is the number of standard deviations the observed value is removed from the expected value. A bond length (or angle) with $|Z| > 5$ is considered an outlier worth inspection. RMSZ is the root-mean-square of all Z scores of the bond lengths (or angles).

Mol	Chain	Bond lengths		Bond angles	
		RMSZ	# Z >5	RMSZ	# Z >5
1	A	1.27	7/2589 (0.3%)	1.17	13/3532 (0.4%)
1	B	1.34	4/2611 (0.2%)	1.21	15/3564 (0.4%)
All	All	1.30	11/5200 (0.2%)	1.19	28/7096 (0.4%)

Chiral center outliers are detected by calculating the chiral volume of a chiral center and verifying if the center is modelled as a planar moiety or with the opposite hand. A planarity outlier is detected by checking planarity of atoms in a peptide group, atoms in a mainchain group or atoms of a sidechain that are expected to be planar.

Mol	Chain	#Chirality outliers	#Planarity outliers
1	B	0	1

All (11) bond length outliers are listed below:

Mol	Chain	Res	Type	Atoms	Z	Observed(Å)	Ideal(Å)
1	B	149	TYR	CE1-CZ	-9.09	1.26	1.38
1	A	149	TYR	CE1-CZ	-8.82	1.27	1.38
1	B	242	GLU	CD-OE2	6.57	1.32	1.25
1	B	223	ASP	CB-CG	6.52	1.65	1.51
1	A	139	GLU	CG-CD	6.23	1.61	1.51
1	A	149	TYR	CZ-OH	6.22	1.48	1.37
1	A	149	TYR	CE2-CZ	-5.92	1.30	1.38
1	A	293	SER	CB-OG	-5.81	1.34	1.42
1	B	106	ALA	N-CA	-5.58	1.35	1.46
1	A	14	LYS	CA-CB	-5.04	1.42	1.53
1	A	223	ASP	CG-OD2	-5.01	1.13	1.25

All (28) bond angle outliers are listed below:

Mol	Chain	Res	Type	Atoms	Z	Observed(°)	Ideal(°)
1	A	84	ARG	NE-CZ-NH1	12.89	126.74	120.30
1	B	41	ASP	CB-CG-OD2	-8.01	111.09	118.30
1	A	55	ASP	CB-CG-OD1	7.96	125.47	118.30
1	A	84	ARG	NE-CZ-NH2	-7.76	116.42	120.30
1	A	41	ASP	CB-CG-OD2	-7.76	111.32	118.30
1	B	315	ASP	CB-CG-OD2	-7.22	111.81	118.30
1	A	30	ASP	CB-CG-OD2	-7.11	111.90	118.30
1	B	84	ARG	NE-CZ-NH1	7.07	123.83	120.30
1	B	55	ASP	CB-CG-OD1	6.67	124.30	118.30
1	B	144	ARG	NE-CZ-NH2	6.66	123.63	120.30
1	A	315	ASP	CB-CG-OD2	-6.34	112.59	118.30
1	A	288	TYR	CZ-CE2-CD2	-6.34	114.10	119.80
1	A	305	ASP	CB-CG-OD2	-6.33	112.60	118.30
1	B	24	ASP	CB-CG-OD2	-6.11	112.81	118.30
1	A	174	TYR	CB-CG-CD1	5.79	124.47	121.00
1	B	263	PHE	CB-CG-CD2	5.75	124.83	120.80
1	A	288	TYR	CB-CG-CD2	-5.62	117.63	121.00
1	B	55	ASP	CB-CG-OD2	-5.53	113.32	118.30
1	B	200[A]	TYR	CB-CG-CD1	5.51	124.31	121.00
1	B	200[B]	TYR	CB-CG-CD1	5.51	124.31	121.00
1	B	168	ASP	CB-CG-OD1	5.40	123.16	118.30
1	B	196[A]	MET	CG-SD-CE	-5.24	91.82	100.20
1	B	196[B]	MET	CG-SD-CE	-5.24	91.82	100.20
1	A	55	ASP	CB-CG-OD2	-5.22	113.60	118.30
1	B	170	ASP	CB-CG-OD1	-5.16	113.66	118.30
1	B	156	TYR	CZ-CE2-CD2	5.13	124.42	119.80
1	A	70	ASP	CB-CG-OD1	5.03	122.83	118.30
1	A	123	TYR	CB-CG-CD2	5.02	124.01	121.00

There are no chirality outliers.

All (1) planarity outliers are listed below:

Mol	Chain	Res	Type	Group
1	B	18	TYR	Peptide

5.2 Too-close contacts

In the following table, the Non-H and H(model) columns list the number of non-hydrogen atoms and hydrogen atoms in the chain respectively. The H(added) column lists the number of hydrogen atoms added and optimized by MolProbity. The Clashes column lists the number of clashes within the asymmetric unit, whereas Symm-Clashes lists symmetry related clashes.

Mol	Chain	Non-H	H(model)	H(added)	Clashes	Symm-Clashes
1	A	2505	0	2425	11	0
1	B	2521	0	2444	10	0
2	C	18	0	0	1	0
2	D	19	0	0	3	0
2	E	18	0	0	3	0
2	F	19	0	0	5	0
3	A	14	0	12	0	0
3	B	14	0	13	0	0
4	A	18	0	24	2	0
4	B	18	0	24	4	0
5	A	12	0	12	1	0
6	A	7	0	10	4	0
7	A	333	0	0	5	2
7	B	297	0	0	11	1
All	All	5813	0	4964	33	2

The all-atom clashscore is defined as the number of clashes found per 1000 atoms (including hydrogen atoms). The all-atom clashscore for this structure is 3.

All (33) close contacts within the same asymmetric unit are listed below, sorted by their clash magnitude.

Atom-1	Atom-2	Interatomic distance (Å)	Clash overlap (Å)
7:B:601:HOH:O	2:F:2:XYP:C3	1.96	1.14
7:A:601:HOH:O	2:D:2:XYP:C3	2.09	0.99
2:E:1:XYP:O5	2:F:2:XYP:O4	1.81	0.96
4:B:507:GOL:C1	7:B:603:HOH:O	2.20	0.88
1:B:225[B]:THR:CA	1:B:226:THR:N	2.43	0.82
1:B:62[B]:ASN:OD1	7:B:602:HOH:O	2.00	0.80
1:A:113:LYS:HZ1	6:A:510:PEG:H12	1.45	0.79
7:B:601:HOH:O	2:F:2:XYP:O3	1.95	0.79
2:C:1:XYP:O5	2:D:2:XYP:O4	2.01	0.78
4:B:507:GOL:C2	7:B:603:HOH:O	2.33	0.77
1:A:65[C]:SER:CA	1:A:66:PHE:N	2.49	0.74
7:A:601:HOH:O	2:D:2:XYP:O3	2.01	0.74
1:A:64:PHE:C	1:A:65[C]:SER:CA	2.56	0.73
1:B:210:GLN:OE1	7:B:604:HOH:O	2.08	0.71
1:B:224:LEU:C	1:B:225[B]:THR:CA	2.58	0.70
2:E:1:XYP:C1	2:F:2:XYP:O4	2.42	0.68
5:A:509:MES:H21	7:A:895:HOH:O	1.94	0.67
1:B:225[B]:THR:HG21	7:B:737:HOH:O	1.97	0.65
4:B:507:GOL:H2	7:B:603:HOH:O	1.95	0.65
1:B:62[B]:ASN:CG	7:B:602:HOH:O	2.35	0.62

Continued on next page...

Continued from previous page...

Atom-1	Atom-2	Interatomic distance (Å)	Clash overlap (Å)
1:A:113:LYS:NZ	6:A:510:PEG:H31	2.15	0.62
1:A:124:LYS:NZ	7:A:603:HOH:O	2.33	0.60
1:B:62[B]:ASN:ND2	7:B:602:HOH:O	2.32	0.60
1:A:191:GLN:HE22	4:A:507:GOL:H31	1.68	0.59
1:B:229:LYS:NZ	7:B:605:HOH:O	2.34	0.58
1:B:182:TYR:HB2	4:B:507:GOL:H32	1.86	0.58
2:E:1:XYP:O5	2:F:2:XYP:C4	2.57	0.52
1:A:100:SER:O	7:A:602:HOH:O	2.19	0.49
1:A:113:LYS:HZ2	6:A:510:PEG:H31	1.77	0.49
1:B:300:ALA:N	1:B:301:PRO:HD3	2.31	0.46
1:A:159:ILE:HG23	6:A:510:PEG:H32	1.97	0.45
1:A:282:TRP:CD1	4:A:506:GOL:H12	2.53	0.44
1:A:300:ALA:N	1:A:301:PRO:HD3	2.36	0.40

All (2) symmetry-related close contacts are listed below. The label for Atom-2 includes the symmetry operator and encoded unit-cell translations to be applied.

Atom-1	Atom-2	Interatomic distance (Å)	Clash overlap (Å)
7:A:880:HOH:O	7:A:895:HOH:O[1_655]	1.71	0.49
7:A:820:HOH:O	7:B:688:HOH:O[1_654]	2.10	0.10

5.3 Torsion angles [i](#)

5.3.1 Protein backbone [i](#)

In the following table, the Percentiles column shows the percent Ramachandran outliers of the chain as a percentile score with respect to all X-ray entries followed by that with respect to entries of similar resolution.

The Analysed column shows the number of residues for which the backbone conformation was analysed, and the total number of residues.

Mol	Chain	Analysed	Favoured	Allowed	Outliers	Percentiles	
1	A	331/319 (104%)	327 (99%)	4 (1%)	0	100	100
1	B	334/319 (105%)	329 (98%)	5 (2%)	0	100	100
All	All	665/638 (104%)	656 (99%)	9 (1%)	0	100	100

There are no Ramachandran outliers to report.

5.3.2 Protein sidechains [i](#)

In the following table, the Percentiles column shows the percent sidechain outliers of the chain as a percentile score with respect to all X-ray entries followed by that with respect to entries of similar resolution.

The Analysed column shows the number of residues for which the sidechain conformation was analysed, and the total number of residues.

Mol	Chain	Analysed	Rotameric	Outliers	Percentiles	
1	A	265/251 (106%)	261 (98%)	4 (2%)	65	30
1	B	268/251 (107%)	266 (99%)	2 (1%)	84	60
All	All	533/502 (106%)	527 (99%)	6 (1%)	76	41

All (6) residues with a non-rotameric sidechain are listed below:

Mol	Chain	Res	Type
1	A	75[A]	LEU
1	A	75[B]	LEU
1	A	283	ASP
1	A	285	THR
1	B	283	ASP
1	B	285	THR

Some sidechains can be flipped to improve hydrogen bonding and reduce clashes. All (3) such sidechains are listed below:

Mol	Chain	Res	Type
1	A	114	ASN
1	A	248	GLN
1	B	96	ASN

5.3.3 RNA [i](#)

There are no RNA molecules in this entry.

5.4 Non-standard residues in protein, DNA, RNA chains [i](#)

There are no non-standard protein/DNA/RNA residues in this entry.

5.5 Carbohydrates i

8 monosaccharides are modelled in this entry.

In the following table, the Counts columns list the number of bonds (or angles) for which Mogul statistics could be retrieved, the number of bonds (or angles) that are observed in the model and the number of bonds (or angles) that are defined in the Chemical Component Dictionary. The Link column lists molecule types, if any, to which the group is linked. The Z score for a bond length (or angle) is the number of standard deviations the observed value is removed from the expected value. A bond length (or angle) with $|Z| > 2$ is considered an outlier worth inspection. RMSZ is the root-mean-square of all Z scores of the bond lengths (or angles).

Mol	Type	Chain	Res	Link	Bond lengths			Bond angles		
					Counts	RMSZ	# Z > 2	Counts	RMSZ	# Z > 2
2	XYP	C	1	2	9,9,10	1.51	2 (22%)	10,12,14	2.23	5 (50%)
2	XYP	C	2	2	9,9,10	0.99	1 (11%)	10,12,14	1.38	0
2	XYP	D	1	2	10,10,10	0.89	0	14,14,14	4.33	9 (64%)
2	XYP	D	2	2	9,9,10	2.02	3 (33%)	10,12,14	3.15	7 (70%)
2	XYP	E	1	2	9,9,10	2.28	1 (11%)	10,12,14	4.29	5 (50%)
2	XYP	E	2	2	9,9,10	1.39	0	10,12,14	2.21	5 (50%)
2	XYP	F	1	2	10,10,10	1.04	0	14,14,14	3.74	9 (64%)
2	XYP	F	2	2	9,9,10	1.19	1 (11%)	10,12,14	1.75	3 (30%)

In the following table, the Chirals column lists the number of chiral outliers, the number of chiral centers analysed, the number of these observed in the model and the number defined in the Chemical Component Dictionary. Similar counts are reported in the Torsion and Rings columns. '2' means no outliers of that kind were identified.

Mol	Type	Chain	Res	Link	Chirals	Torsions	Rings
2	XYP	C	1	2	-	-	0/1/1/1
2	XYP	C	2	2	-	-	0/1/1/1
2	XYP	D	1	2	1/1/4/4	-	0/1/1/1
2	XYP	D	2	2	-	-	0/1/1/1
2	XYP	E	1	2	-	-	0/1/1/1
2	XYP	E	2	2	-	-	0/1/1/1
2	XYP	F	1	2	1/1/4/4	-	0/1/1/1
2	XYP	F	2	2	-	-	0/1/1/1

All (8) bond length outliers are listed below:

Mol	Chain	Res	Type	Atoms	Z	Observed(Å)	Ideal(Å)
2	E	1	XYP	O5-C1	6.12	1.54	1.42
2	D	2	XYP	O5-C5	4.33	1.51	1.42

Continued on next page...

Continued from previous page...

Mol	Chain	Res	Type	Atoms	Z	Observed(Å)	Ideal(Å)
2	F	2	XYP	O5-C1	-2.91	1.37	1.42
2	C	1	XYP	O5-C1	2.87	1.48	1.42
2	D	2	XYP	C5-C4	2.77	1.58	1.52
2	C	2	XYP	C4-C3	-2.20	1.49	1.52
2	D	2	XYP	C2-C3	-2.12	1.49	1.52
2	C	1	XYP	C5-C4	-2.06	1.47	1.52

All (43) bond angle outliers are listed below:

Mol	Chain	Res	Type	Atoms	Z	Observed(°)	Ideal(°)
2	E	1	XYP	C5-C4-C3	10.34	122.37	109.67
2	D	1	XYP	C5-O5-C1	-8.12	99.05	112.71
2	D	1	XYP	O5-C1-C2	7.41	120.44	109.43
2	F	1	XYP	C5-C4-C3	7.11	118.40	109.67
2	F	1	XYP	O5-C1-C2	7.05	119.91	109.43
2	D	1	XYP	C5-C4-C3	6.77	117.99	109.67
2	D	2	XYP	C5-C4-C3	6.43	117.57	109.67
2	D	1	XYP	C4-C3-C2	-5.98	100.55	110.89
2	E	1	XYP	O4-C4-C5	5.69	120.79	109.15
2	E	1	XYP	O2-C2-C1	5.15	119.69	109.15
2	F	1	XYP	O1-C1-O5	5.08	122.96	109.72
2	F	1	XYP	C1-C2-C3	-4.99	99.97	110.31
2	D	2	XYP	C1-C2-C3	-4.21	104.49	109.67
2	C	1	XYP	O4-C4-C5	4.17	117.68	109.15
2	E	2	XYP	C4-C3-C2	-3.82	106.38	110.92
2	E	2	XYP	C5-O5-C1	-3.66	105.90	111.52
2	D	2	XYP	C4-C3-C2	-3.62	106.62	110.92
2	D	1	XYP	O2-C2-C3	-3.60	102.02	110.35
2	F	1	XYP	O5-C5-C4	-3.51	105.35	110.77
2	E	1	XYP	O3-C3-C4	-3.36	103.56	109.99
2	D	1	XYP	O1-C1-C2	3.28	118.25	109.03
2	D	1	XYP	C1-C2-C3	-3.27	103.54	110.31
2	D	2	XYP	O4-C4-C5	3.17	115.63	109.15
2	C	1	XYP	C5-C4-C3	3.15	113.54	109.67
2	D	1	XYP	O1-C1-O5	3.10	117.78	109.72
2	F	2	XYP	C4-C3-C2	-2.84	107.55	110.92
2	F	2	XYP	O2-C2-C1	-2.84	103.35	109.15
2	D	1	XYP	O2-C2-C1	-2.79	102.69	109.16
2	E	2	XYP	O3-C3-C4	2.70	115.16	109.99
2	C	1	XYP	O3-C3-C4	-2.69	104.84	109.99
2	F	1	XYP	O1-C1-C2	2.68	116.57	109.03
2	E	2	XYP	O2-C2-C1	-2.68	103.68	109.15

Continued on next page...

Continued from previous page...

Mol	Chain	Res	Type	Atoms	Z	Observed(°)	Ideal(°)
2	D	2	XYP	O3-C3-C4	2.57	114.91	109.99
2	F	1	XYP	O4-C4-C3	-2.54	105.05	110.14
2	F	1	XYP	C5-O5-C1	-2.53	108.46	112.71
2	F	1	XYP	C4-C3-C2	-2.43	106.70	110.89
2	C	1	XYP	O2-C2-C1	2.27	113.80	109.15
2	E	2	XYP	O4-C4-C3	-2.24	105.65	110.14
2	E	1	XYP	O3-C3-C2	-2.21	105.75	109.99
2	D	2	XYP	O2-C2-C1	-2.21	104.63	109.15
2	F	2	XYP	C5-O5-C1	2.10	114.76	111.52
2	C	1	XYP	C1-C2-C3	2.05	112.18	109.67
2	D	2	XYP	O4-C4-C3	-2.03	106.08	110.14

All (2) chirality outliers are listed below:

Mol	Chain	Res	Type	Atom
2	D	1	XYP	C1
2	F	1	XYP	C1

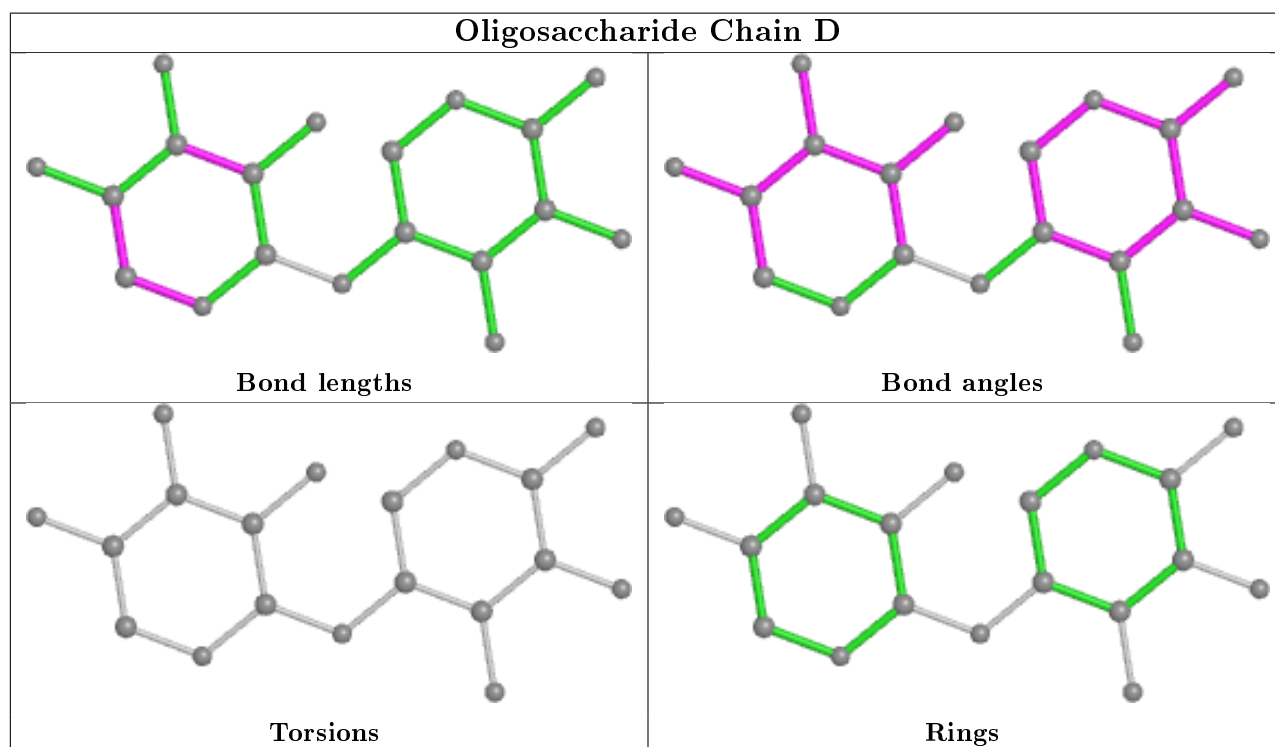
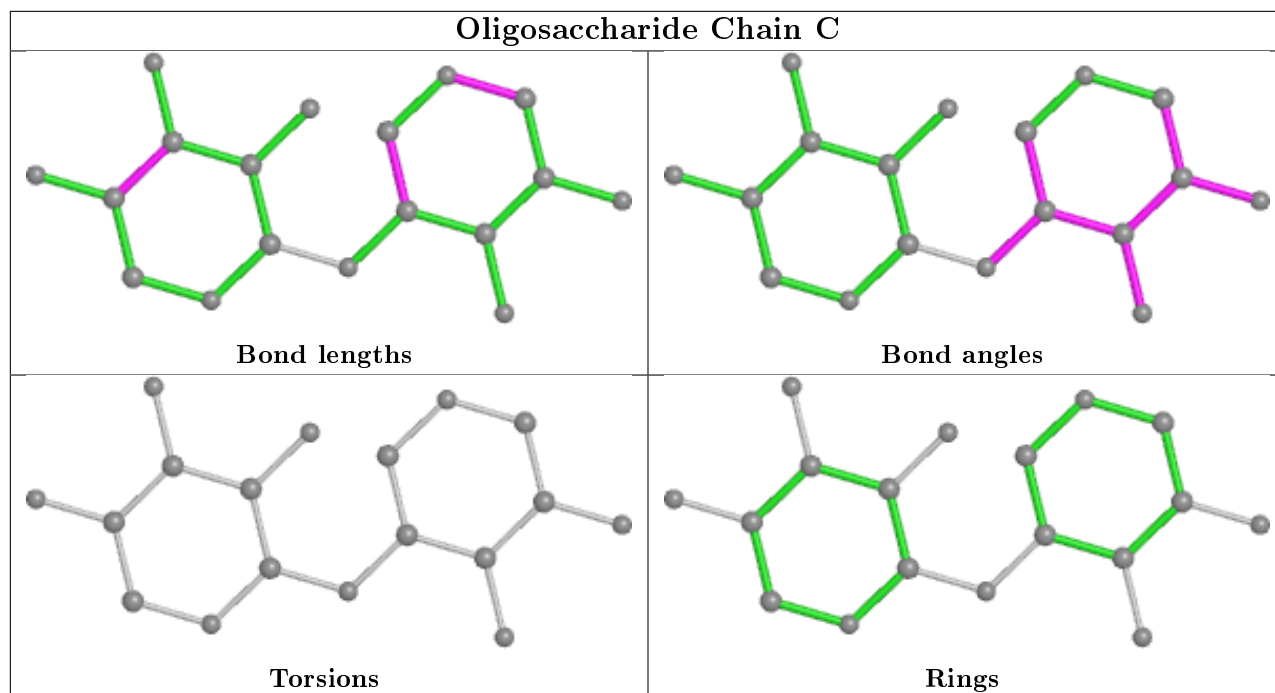
There are no torsion outliers.

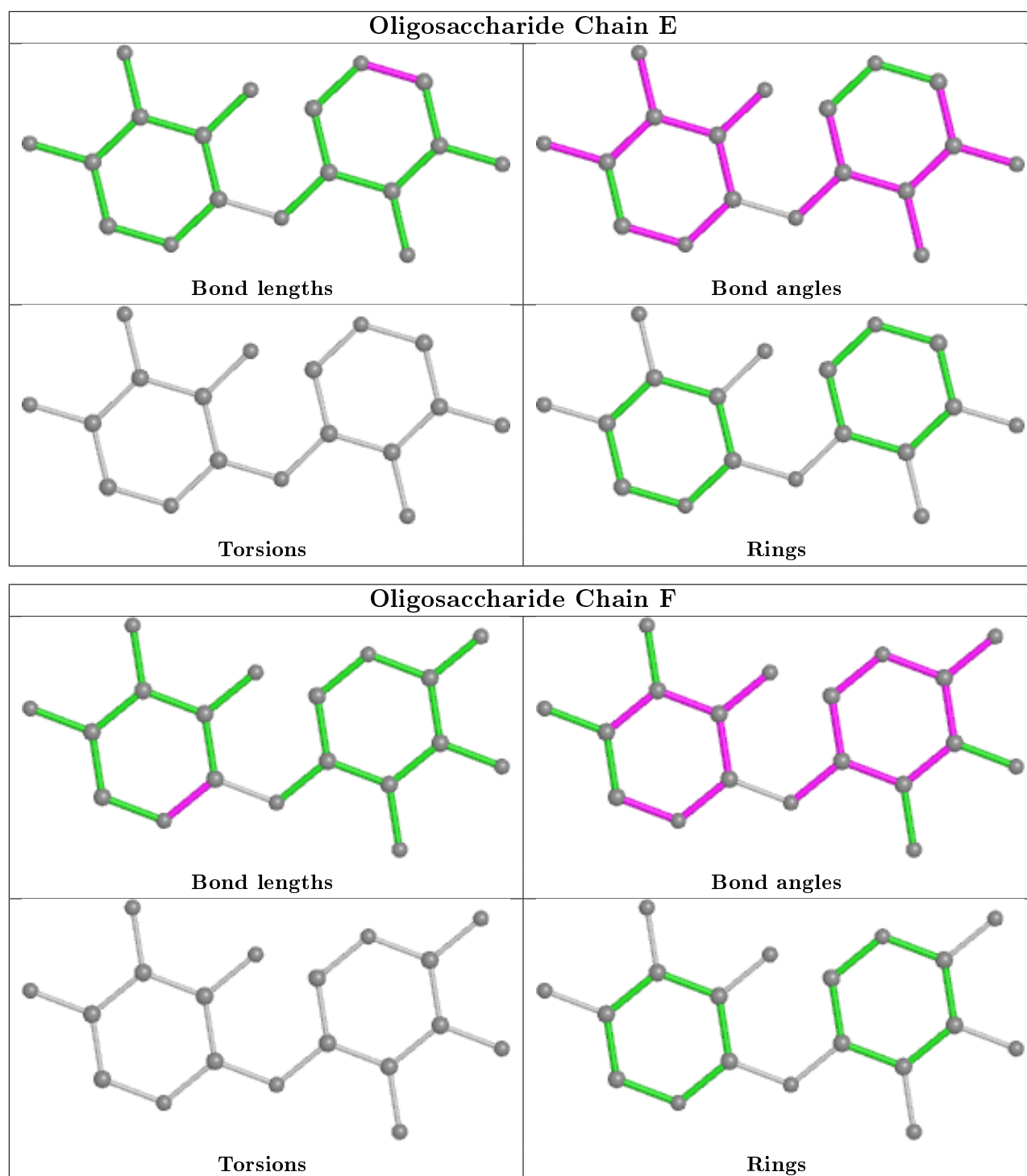
There are no ring outliers.

4 monomers are involved in 8 short contacts:

Mol	Chain	Res	Type	Clashes	Symm-Clashes
2	E	1	XYP	3	0
2	C	1	XYP	1	0
2	F	2	XYP	5	0
2	D	2	XYP	3	0

The following is a two-dimensional graphical depiction of Mogul quality analysis of bond lengths, bond angles, torsion angles, and ring geometry for oligosaccharide.





5.6 Ligand geometry [i](#)

10 ligands are modelled in this entry.

In the following table, the Counts columns list the number of bonds (or angles) for which Mogul statistics could be retrieved, the number of bonds (or angles) that are observed in the model and the number of bonds (or angles) that are defined in the Chemical Component Dictionary. The Link column lists molecule types, if any, to which the group is linked. The Z score for a bond

length (or angle) is the number of standard deviations the observed value is removed from the expected value. A bond length (or angle) with $|Z| > 2$ is considered an outlier worth inspection. RMSZ is the root-mean-square of all Z scores of the bond lengths (or angles).

Mol	Type	Chain	Res	Link	Bond lengths			Bond angles		
					Counts	RMSZ	# Z > 2	Counts	RMSZ	# Z > 2
5	MES	A	509	-	12,12,12	1.20	1 (8%)	14,16,16	3.50	7 (50%)
6	PEG	A	510	-	6,6,6	0.60	0	5,5,5	1.97	1 (20%)
4	GOL	A	506	-	5,5,5	0.67	0	5,5,5	1.93	2 (40%)
3	NAG	A	505	1	14,14,15	3.04	6 (42%)	17,19,21	3.95	11 (64%)
4	GOL	A	508	-	5,5,5	1.05	0	5,5,5	3.31	3 (60%)
4	GOL	B	508	-	5,5,5	0.28	0	5,5,5	0.97	0
4	GOL	B	507	-	5,5,5	1.26	1 (20%)	5,5,5	1.86	1 (20%)
4	GOL	A	507	-	5,5,5	0.48	0	5,5,5	0.77	0
3	NAG	B	505	1	14,14,15	2.49	5 (35%)	17,19,21	3.00	10 (58%)
4	GOL	B	506	-	5,5,5	0.44	0	5,5,5	2.03	3 (60%)

In the following table, the Chirals column lists the number of chiral outliers, the number of chiral centers analysed, the number of these observed in the model and the number defined in the Chemical Component Dictionary. Similar counts are reported in the Torsion and Rings columns. '-' means no outliers of that kind were identified.

Mol	Type	Chain	Res	Link	Chirals	Torsions	Rings
5	MES	A	509	-	-	1/6/14/14	0/1/1/1
6	PEG	A	510	-	-	2/4/4/4	-
4	GOL	A	506	-	-	0/4/4/4	-
3	NAG	A	505	1	-	0/6/23/26	0/1/1/1
4	GOL	A	508	-	-	0/4/4/4	-
4	GOL	B	508	-	-	4/4/4/4	-
4	GOL	B	507	-	-	0/4/4/4	-
4	GOL	A	507	-	-	2/4/4/4	-
3	NAG	B	505	1	-	0/6/23/26	0/1/1/1
4	GOL	B	506	-	-	1/4/4/4	-

All (13) bond length outliers are listed below:

Mol	Chain	Res	Type	Atoms	Z	Observed(Å)	Ideal(Å)
3	A	505	NAG	O5-C1	-8.62	1.30	1.43
3	B	505	NAG	O5-C1	-7.30	1.32	1.43
3	A	505	NAG	C1-C2	4.64	1.59	1.52
3	A	505	NAG	C2-N2	-2.97	1.41	1.46
3	B	505	NAG	O3-C3	2.92	1.49	1.43

Continued on next page...

Continued from previous page...

Mol	Chain	Res	Type	Atoms	Z	Observed(Å)	Ideal(Å)
4	B	507	GOL	O2-C2	2.71	1.51	1.43
3	B	505	NAG	C1-C2	2.54	1.56	1.52
3	A	505	NAG	O5-C5	2.49	1.48	1.43
5	A	509	MES	C8-S	-2.42	1.74	1.77
3	B	505	NAG	O4-C4	2.34	1.48	1.43
3	A	505	NAG	C7-N2	-2.29	1.26	1.34
3	A	505	NAG	C8-C7	-2.11	1.46	1.50
3	B	505	NAG	O5-C5	2.05	1.47	1.43

All (38) bond angle outliers are listed below:

Mol	Chain	Res	Type	Atoms	Z	Observed(°)	Ideal(°)
3	A	505	NAG	C8-C7-N2	8.17	129.94	116.10
3	A	505	NAG	C2-N2-C7	8.17	134.53	122.90
5	A	509	MES	O3S-S-C8	7.57	118.02	105.77
5	A	509	MES	O1S-S-C8	-5.96	99.73	106.92
3	B	505	NAG	C2-N2-C7	5.77	131.12	122.90
3	B	505	NAG	O7-C7-N2	-5.63	111.60	121.95
3	A	505	NAG	C1-O5-C5	5.52	119.67	112.19
3	A	505	NAG	O7-C7-N2	-5.34	112.14	121.95
4	A	508	GOL	O2-C2-C1	5.16	131.86	109.12
5	A	509	MES	C5-N4-C3	4.80	119.63	108.83
4	A	508	GOL	C3-C2-C1	-4.58	93.90	111.70
3	A	505	NAG	C1-C2-N2	4.20	117.67	110.49
5	A	509	MES	O3S-S-O1S	-4.04	101.39	111.27
5	A	509	MES	C7-N4-C3	4.01	121.50	111.23
3	B	505	NAG	C4-C3-C2	3.99	116.87	111.02
3	B	505	NAG	C1-C2-N2	3.93	117.20	110.49
6	A	510	PEG	O2-C3-C4	3.75	126.56	110.07
4	B	507	GOL	O2-C2-C3	3.67	125.30	109.12
3	A	505	NAG	C3-C4-C5	3.56	116.60	110.24
3	B	505	NAG	C8-C7-N2	3.53	122.08	116.10
3	A	505	NAG	O5-C5-C6	-3.45	101.80	107.20
5	A	509	MES	O1-C6-C5	-3.16	104.83	111.80
4	A	506	GOL	O2-C2-C1	-3.09	95.53	109.12
3	B	505	NAG	O5-C1-C2	3.02	116.05	111.29
4	B	506	GOL	O2-C2-C3	2.89	121.86	109.12
3	B	505	NAG	O6-C6-C5	-2.77	101.78	111.29
4	A	508	GOL	O1-C1-C2	2.60	122.68	110.20
3	A	505	NAG	O6-C6-C5	-2.55	102.55	111.29
3	B	505	NAG	O3-C3-C4	2.49	116.10	110.35
3	A	505	NAG	O7-C7-C8	-2.43	117.54	122.06

Continued on next page...

Continued from previous page...

Mol	Chain	Res	Type	Atoms	Z	Observed(°)	Ideal(°)
4	B	506	GOL	C3-C2-C1	-2.38	102.44	111.70
5	A	509	MES	O2S-S-C8	2.37	109.77	106.92
3	A	505	NAG	O5-C5-C4	-2.35	105.11	110.83
3	B	505	NAG	O7-C7-C8	2.28	126.30	122.06
4	B	506	GOL	O2-C2-C1	-2.27	99.15	109.12
3	B	505	NAG	O3-C3-C2	-2.18	104.96	109.47
3	A	505	NAG	O4-C4-C3	2.13	115.28	110.35
4	A	506	GOL	O1-C1-C2	2.05	120.03	110.20

There are no chirality outliers.

All (10) torsion outliers are listed below:

Mol	Chain	Res	Type	Atoms
5	A	509	MES	C8-C7-N4-C3
4	B	508	GOL	O1-C1-C2-C3
4	B	508	GOL	C1-C2-C3-O3
4	A	507	GOL	O2-C2-C3-O3
4	B	508	GOL	O2-C2-C3-O3
6	A	510	PEG	O2-C3-C4-O4
4	A	507	GOL	C1-C2-C3-O3
4	B	508	GOL	O1-C1-C2-O2
6	A	510	PEG	O1-C1-C2-O2
4	B	506	GOL	O1-C1-C2-C3

There are no ring outliers.

5 monomers are involved in 11 short contacts:

Mol	Chain	Res	Type	Clashes	Symm-Clashes
5	A	509	MES	1	0
6	A	510	PEG	4	0
4	A	506	GOL	1	0
4	B	507	GOL	4	0
4	A	507	GOL	1	0

5.7 Other polymers [i](#)

There are no such residues in this entry.

5.8 Polymer linkage issues

There are no chain breaks in this entry.

6 Fit of model and data [i](#)

6.1 Protein, DNA and RNA chains [i](#)

In the following table, the column labelled '#RSRZ> 2' contains the number (and percentage) of RSRZ outliers, followed by percent RSRZ outliers for the chain as percentile scores relative to all X-ray entries and entries of similar resolution. The OWAB column contains the minimum, median, 95th percentile and maximum values of the occupancy-weighted average B-factor per residue. The column labelled 'Q< 0.9' lists the number of (and percentage) of residues with an average occupancy less than 0.9.

Mol	Chain	Analysed	<RSRZ>	#RSRZ>2	OWAB(Å ²)	Q<0.9
1	A	319/319 (100%)	0.01	2 (0%) 89 88	4, 7, 13, 31	0
1	B	319/319 (100%)	0.02	3 (0%) 84 82	5, 9, 15, 28	0
All	All	638/638 (100%)	0.02	5 (0%) 86 85	4, 8, 15, 31	0

All (5) RSRZ outliers are listed below:

Mol	Chain	Res	Type	RSRZ
1	B	5	ALA	4.1
1	A	5	ALA	3.4
1	B	200[A]	TYR	2.3
1	A	200[A]	TYR	2.2
1	B	99[A]	SER	2.0

6.2 Non-standard residues in protein, DNA, RNA chains [i](#)

There are no non-standard protein/DNA/RNA residues in this entry.

6.3 Carbohydrates [i](#)

In the following table, the Atoms column lists the number of modelled atoms in the group and the number defined in the chemical component dictionary. The B-factors column lists the minimum, median, 95th percentile and maximum values of B factors of atoms in the group. The column labelled 'Q< 0.9' lists the number of atoms with occupancy less than 0.9.

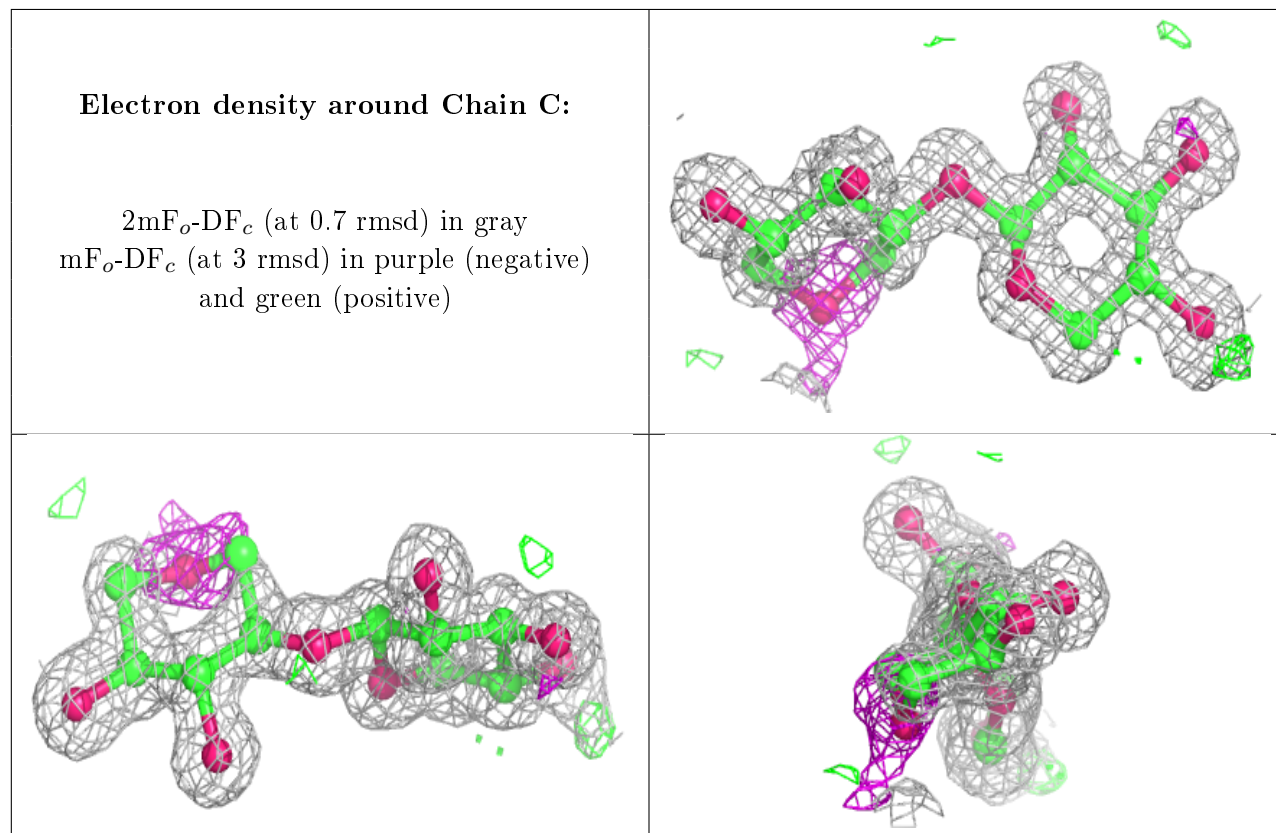
Mol	Type	Chain	Res	Atoms	RSCC	RSR	B-factors(Å ²)	Q<0.9
2	XYP	F	2	9/10	0.75	0.24	20,25,31,33	0
2	XYP	F	1	10/10	0.79	0.28	32,33,38,38	0
2	XYP	D	1	10/10	0.85	0.17	23,24,30,33	0
2	XYP	D	2	9/10	0.86	0.21	19,22,24,29	0

Continued on next page...

Continued from previous page...

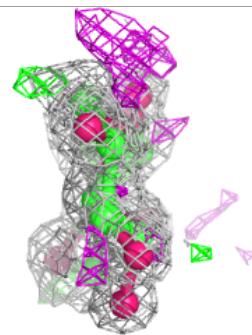
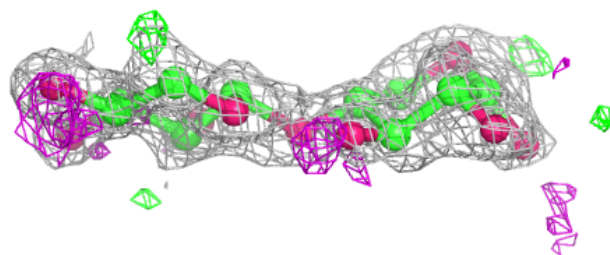
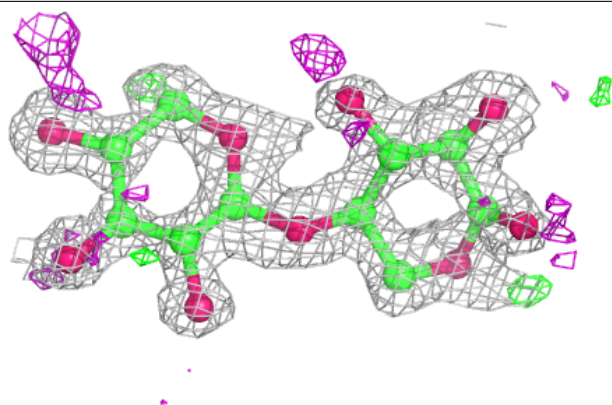
Mol	Type	Chain	Res	Atoms	RSCC	RSR	B-factors(\AA^2)	Q<0.9
2	XYP	E	1	9/10	0.94	0.12	6,9,20,25	0
2	XYP	C	2	9/10	0.96	0.10	10,11,11,14	0
2	XYP	C	1	9/10	0.96	0.14	7,9,22,31	0
2	XYP	E	2	9/10	0.96	0.08	10,11,11,13	0

The following is a graphical depiction of the model fit to experimental electron density for oligosaccharide. Each fit is shown from different orientation to approximate a three-dimensional view.

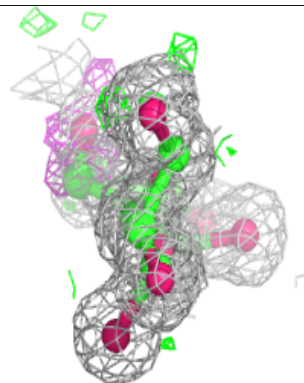
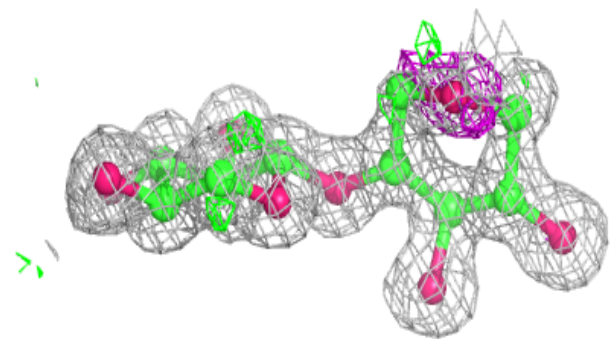
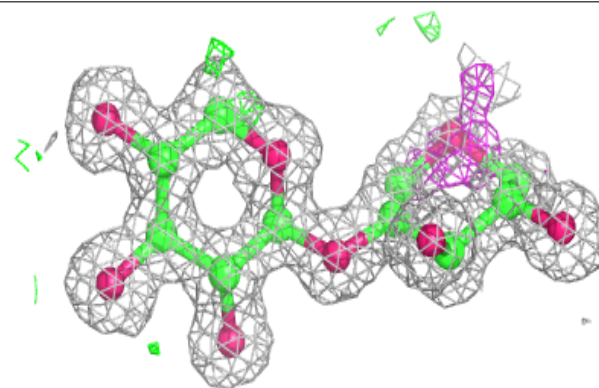


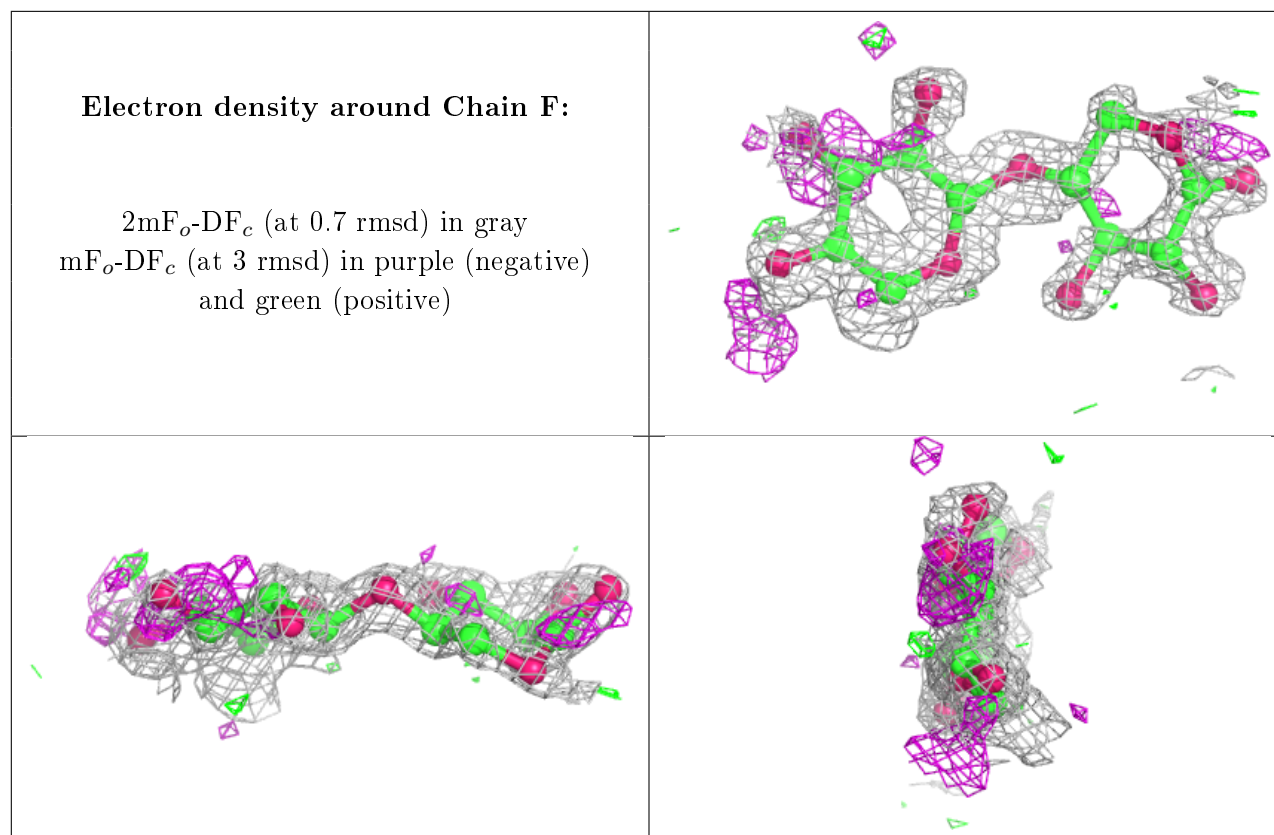
Electron density around Chain D:

$2mF_o-DF_c$ (at 0.7 rmsd) in gray
 mF_o-DF_c (at 3 rmsd) in purple (negative)
and green (positive)

**Electron density around Chain E:**

$2mF_o-DF_c$ (at 0.7 rmsd) in gray
 mF_o-DF_c (at 3 rmsd) in purple (negative)
and green (positive)





6.4 Ligands [i](#)

In the following table, the Atoms column lists the number of modelled atoms in the group and the number defined in the chemical component dictionary. The B-factors column lists the minimum, median, 95th percentile and maximum values of B factors of atoms in the group. The column labelled 'Q< 0.9' lists the number of atoms with occupancy less than 0.9.

Mol	Type	Chain	Res	Atoms	RSCC	RSR	B-factors(Å ²)	Q<0.9
6	PEG	A	510	7/7	0.78	0.16	21,25,30,33	0
4	GOL	A	508	6/6	0.81	0.16	19,25,33,40	0
4	GOL	B	507	6/6	0.83	0.24	19,26,32,41	0
3	NAG	B	505	14/15	0.89	0.12	14,18,27,28	0
4	GOL	B	508	6/6	0.90	0.20	16,30,40,46	0
4	GOL	B	506	6/6	0.90	0.13	13,19,20,20	0
3	NAG	A	505	14/15	0.91	0.11	10,15,26,29	0
5	MES	A	509	12/12	0.91	0.17	14,18,20,20	0
4	GOL	A	506	6/6	0.95	0.10	11,19,20,20	0
4	GOL	A	507	6/6	0.95	0.12	9,23,27,39	0

6.5 Other polymers [i](#)

There are no such residues in this entry.