



Full wwPDB X-ray Structure Validation Report ⓘ

Sep 16, 2020 – 01:39 PM BST

PDB ID : 5JCJ
Title : Trypanosoma brucei PTR1 in complex with inhibitor NMT-H037 (compound 7)
Authors : Landi, G.; Pozzi, C.; Di Pisa, F.; Dello Iacono, L.; Mangani, S.
Deposited on : 2016-04-15
Resolution : 1.76 Å(reported)

This is a Full wwPDB X-ray Structure Validation Report for a publicly released PDB entry.

We welcome your comments at validation@mail.wwpdb.org

A user guide is available at

<https://www.wwpdb.org/validation/2017/XrayValidationReportHelp>

with specific help available everywhere you see the ⓘ symbol.

The following versions of software and data (see [references ⓘ](#)) were used in the production of this report:

MolProbity : 4.02b-467
Mogul : 1.8.5 (274361), CSD as541be (2020)
Xtriage (Phenix) : 1.13
EDS : 2.14.3.dev2
buster-report : 1.1.7 (2018)
Percentile statistics : 20191225.v01 (using entries in the PDB archive December 25th 2019)
Refmac : 5.8.0158
CCP4 : 7.0.044 (Gargrove)
Ideal geometry (proteins) : Engh & Huber (2001)
Ideal geometry (DNA, RNA) : Parkinson et al. (1996)
Validation Pipeline (wwPDB-VP) : 2.14.3.dev2

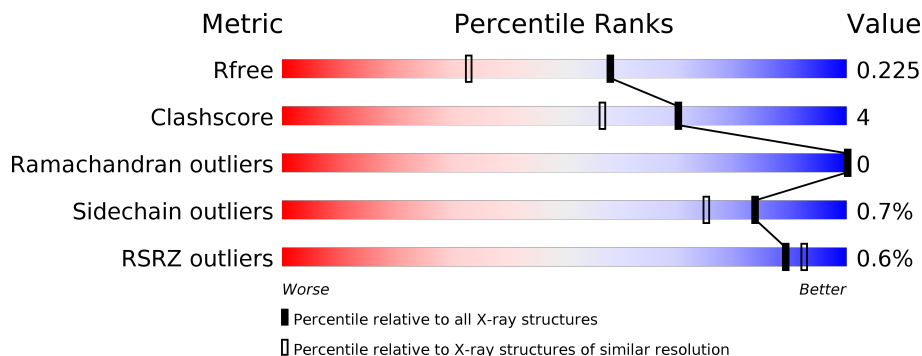
1 Overall quality at a glance

The following experimental techniques were used to determine the structure:

X-RAY DIFFRACTION

The reported resolution of this entry is 1.76 Å.

Percentile scores (ranging between 0-100) for global validation metrics of the entry are shown in the following graphic. The table shows the number of entries on which the scores are based.



Metric	Whole archive (#Entries)	Similar resolution (#Entries, resolution range(Å))
R_{free}	130704	2340 (1.76-1.76)
Clashscore	141614	2466 (1.76-1.76)
Ramachandran outliers	138981	2437 (1.76-1.76)
Sidechain outliers	138945	2437 (1.76-1.76)
RSRZ outliers	127900	2298 (1.76-1.76)

The table below summarises the geometric issues observed across the polymeric chains and their fit to the electron density. The red, orange, yellow and green segments on the lower bar indicate the fraction of residues that contain outliers for ≥ 3 , 2, 1 and 0 types of geometric quality criteria respectively. A grey segment represents the fraction of residues that are not modelled. The numeric value for each fraction is indicated below the corresponding segment, with a dot representing fractions $\leq 5\%$. The upper red bar (where present) indicates the fraction of residues that have poor fit to the electron density. The numeric value is given above the bar.

Mol	Chain	Length	Quality of chain
1	A	288	
1	B	288	
1	C	288	
2	D	288	

The following table lists non-polymeric compounds, carbohydrate monomers and non-standard residues in protein, DNA, RNA chains that are outliers for geometric or electron-density-fit crite-

ria:

Mol	Type	Chain	Res	Chirality	Geometry	Clashes	Electron density
4	ACT	A	302	-	-	X	-

2 Entry composition [i](#)

There are 6 unique types of molecules in this entry. The entry contains 8264 atoms, of which 0 are hydrogens and 0 are deuteriums.

In the tables below, the ZeroOcc column contains the number of atoms modelled with zero occupancy, the AltConf column contains the number of residues with at least one atom in alternate conformation and the Trace column contains the number of residues modelled with at most 2 atoms.

- Molecule 1 is a protein called Pteridine reductase.

Mol	Chain	Residues	Atoms					ZeroOcc	AltConf	Trace
			Total	C	N	O	S			
1	A	249	Total 1852	C 1172	N 324	O 345	S 11	0	7	0
1	B	248	Total 1865	C 1180	N 324	O 348	S 13	0	9	0
1	C	239	Total 1782	C 1127	N 311	O 333	S 11	0	6	0

There are 60 discrepancies between the modelled and reference sequences:

Chain	Residue	Modelled	Actual	Comment	Reference
A	-19	MET	-	initiating methionine	UNP O76290
A	-18	GLY	-	expression tag	UNP O76290
A	-17	SER	-	expression tag	UNP O76290
A	-16	SER	-	expression tag	UNP O76290
A	-15	HIS	-	expression tag	UNP O76290
A	-14	HIS	-	expression tag	UNP O76290
A	-13	HIS	-	expression tag	UNP O76290
A	-12	HIS	-	expression tag	UNP O76290
A	-11	HIS	-	expression tag	UNP O76290
A	-10	HIS	-	expression tag	UNP O76290
A	-9	SER	-	expression tag	UNP O76290
A	-8	SER	-	expression tag	UNP O76290
A	-7	GLY	-	expression tag	UNP O76290
A	-6	LEU	-	expression tag	UNP O76290
A	-5	VAL	-	expression tag	UNP O76290
A	-4	PRO	-	expression tag	UNP O76290
A	-3	ARG	-	expression tag	UNP O76290
A	-2	GLY	-	expression tag	UNP O76290
A	-1	SER	-	expression tag	UNP O76290
A	0	HIS	-	expression tag	UNP O76290
B	-19	MET	-	initiating methionine	UNP O76290
B	-18	GLY	-	expression tag	UNP O76290
B	-17	SER	-	expression tag	UNP O76290

Continued on next page...

Continued from previous page...

Chain	Residue	Modelled	Actual	Comment	Reference
B	-16	SER	-	expression tag	UNP O76290
B	-15	HIS	-	expression tag	UNP O76290
B	-14	HIS	-	expression tag	UNP O76290
B	-13	HIS	-	expression tag	UNP O76290
B	-12	HIS	-	expression tag	UNP O76290
B	-11	HIS	-	expression tag	UNP O76290
B	-10	HIS	-	expression tag	UNP O76290
B	-9	SER	-	expression tag	UNP O76290
B	-8	SER	-	expression tag	UNP O76290
B	-7	GLY	-	expression tag	UNP O76290
B	-6	LEU	-	expression tag	UNP O76290
B	-5	VAL	-	expression tag	UNP O76290
B	-4	PRO	-	expression tag	UNP O76290
B	-3	ARG	-	expression tag	UNP O76290
B	-2	GLY	-	expression tag	UNP O76290
B	-1	SER	-	expression tag	UNP O76290
B	0	HIS	-	expression tag	UNP O76290
C	-19	MET	-	initiating methionine	UNP O76290
C	-18	GLY	-	expression tag	UNP O76290
C	-17	SER	-	expression tag	UNP O76290
C	-16	SER	-	expression tag	UNP O76290
C	-15	HIS	-	expression tag	UNP O76290
C	-14	HIS	-	expression tag	UNP O76290
C	-13	HIS	-	expression tag	UNP O76290
C	-12	HIS	-	expression tag	UNP O76290
C	-11	HIS	-	expression tag	UNP O76290
C	-10	HIS	-	expression tag	UNP O76290
C	-9	SER	-	expression tag	UNP O76290
C	-8	SER	-	expression tag	UNP O76290
C	-7	GLY	-	expression tag	UNP O76290
C	-6	LEU	-	expression tag	UNP O76290
C	-5	VAL	-	expression tag	UNP O76290
C	-4	PRO	-	expression tag	UNP O76290
C	-3	ARG	-	expression tag	UNP O76290
C	-2	GLY	-	expression tag	UNP O76290
C	-1	SER	-	expression tag	UNP O76290
C	0	HIS	-	expression tag	UNP O76290

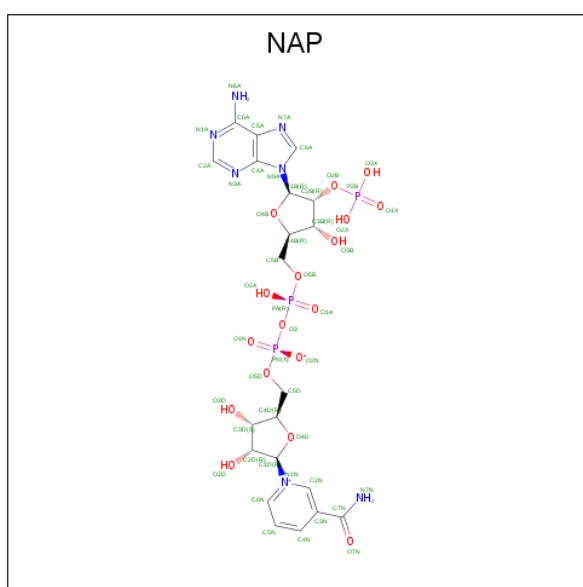
- Molecule 2 is a protein called Pteridine reductase.

Mol	Chain	Residues	Atoms					ZeroOcc	AltConf	Trace
			Total	C	N	O	S			
2	D	248	1845	1170	320	343	12	0	9	0

There are 20 discrepancies between the modelled and reference sequences:

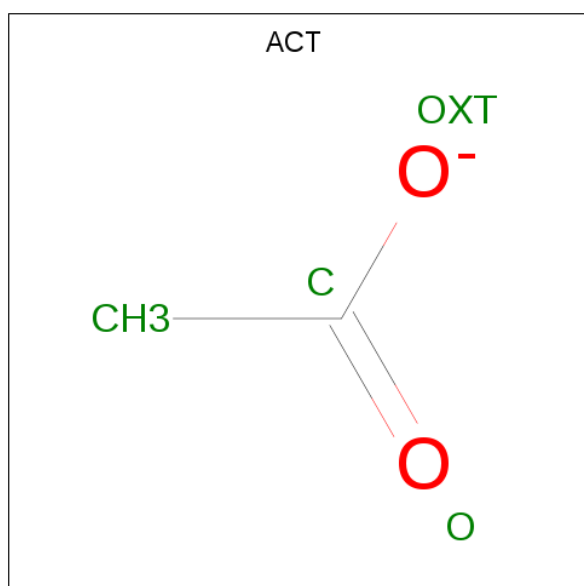
Chain	Residue	Modelled	Actual	Comment	Reference
D	-19	MET	-	initiating methionine	UNP O76290
D	-18	GLY	-	expression tag	UNP O76290
D	-17	SER	-	expression tag	UNP O76290
D	-16	SER	-	expression tag	UNP O76290
D	-15	HIS	-	expression tag	UNP O76290
D	-14	HIS	-	expression tag	UNP O76290
D	-13	HIS	-	expression tag	UNP O76290
D	-12	HIS	-	expression tag	UNP O76290
D	-11	HIS	-	expression tag	UNP O76290
D	-10	HIS	-	expression tag	UNP O76290
D	-9	SER	-	expression tag	UNP O76290
D	-8	SER	-	expression tag	UNP O76290
D	-7	GLY	-	expression tag	UNP O76290
D	-6	LEU	-	expression tag	UNP O76290
D	-5	VAL	-	expression tag	UNP O76290
D	-4	PRO	-	expression tag	UNP O76290
D	-3	ARG	-	expression tag	UNP O76290
D	-2	GLY	-	expression tag	UNP O76290
D	-1	SER	-	expression tag	UNP O76290
D	0	HIS	-	expression tag	UNP O76290

- Molecule 3 is NADP NICOTINAMIDE-ADENINE-DINUCLEOTIDE PHOSPHATE (three-letter code: NAP) (formula: $C_{21}H_{28}N_7O_{17}P_3$).



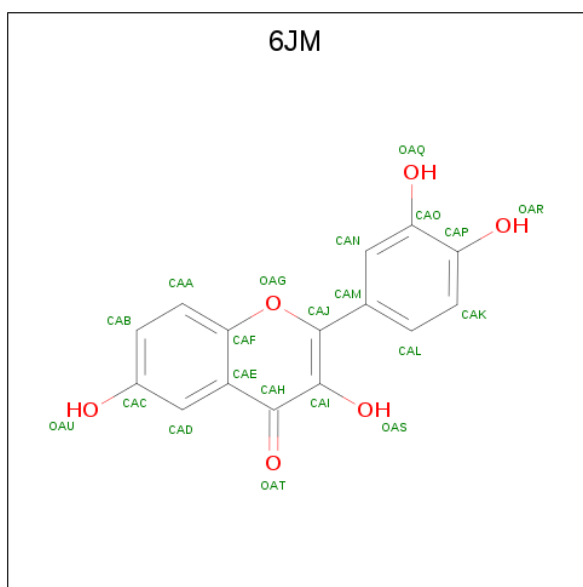
Mol	Chain	Residues	Atoms					ZeroOcc	AltConf
			Total	C	N	O	P		
3	A	1	48	21	7	17	3	0	0
3	B	1	48	21	7	17	3	0	0
3	C	1	48	21	7	17	3	0	0
3	D	1	48	21	7	17	3	0	0

- Molecule 4 is ACETATE ION (three-letter code: ACT) (formula: C₂H₃O₂).



Mol	Chain	Residues	Atoms		ZeroOcc	AltConf
			Total	O		
4	A	1	4	2	0	0
4	C	1	4	2	0	0

- Molecule 5 is 2-(3,4-dihydroxyphenyl)-3,6-dihydroxy-4H-1-benzopyran-4-one (three-letter code: 6JM) (formula: C₁₅H₁₀O₆).



Mol	Chain	Residues	Atoms		ZeroOcc	AltConf
5	A	1	Total	C O	0	0
			21	15 6		
5	B	1	Total	C O	0	0
			21	15 6		
5	D	1	Total	C O	0	0
			21	15 6		

- Molecule 6 is water.

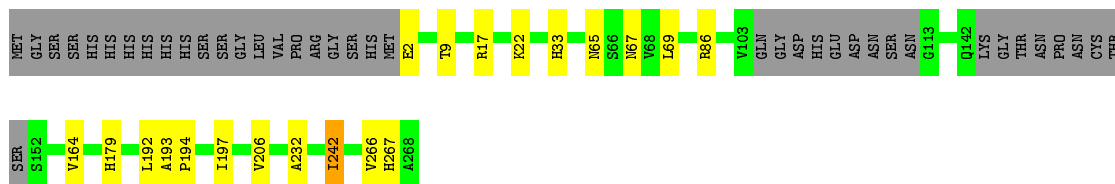
Mol	Chain	Residues	Atoms		ZeroOcc	AltConf
6	A	182	Total	O	0	0
			182	182		
6	B	191	Total	O	0	0
			191	191		
6	C	140	Total	O	0	0
			140	140		
6	D	144	Total	O	0	0
			144	144		

3 Residue-property plots [i](#)


These plots are drawn for all protein, RNA, DNA and oligosaccharide chains in the entry. The first graphic for a chain summarises the proportions of the various outlier classes displayed in the second graphic. The second graphic shows the sequence view annotated by issues in geometry and electron density. Residues are color-coded according to the number of geometric quality criteria for which they contain at least one outlier: green = 0, yellow = 1, orange = 2 and red = 3 or more. A red dot above a residue indicates a poor fit to the electron density ($RSRZ > 2$). Stretches of 2 or more consecutive residues without any outlier are shown as a green connector. Residues present in the sample, but not in the model, are shown in grey.

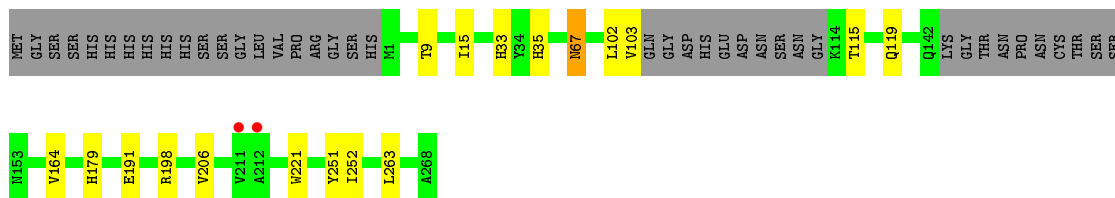
- Molecule 1: Pteridine reductase

Chain A: 




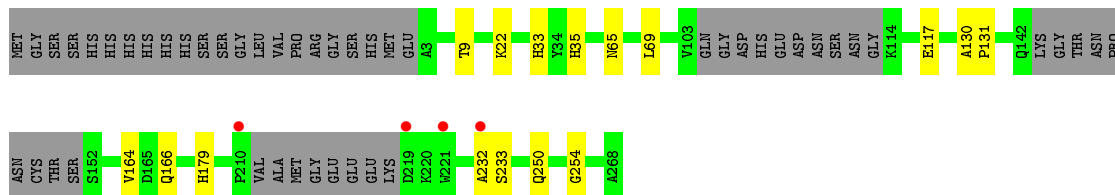
- Molecule 1: Pteridine reductase

Chain B: 




- Molecule 1: Pteridine reductase

Chain C: 



- Molecule 2: Pteridine reductase

Chain D: 



GLY	THR	ASN	PRO	ASN	CYS	THR	SER	S192	V164	M169	M175	H179	Y195	G205	V206	E215	W221	Q236	Y251	L265	A268
-----	-----	-----	-----	-----	-----	-----	-----	------	------	------	------	------	------	------	------	------	------	------	------	------	------

4 Data and refinement statistics i

Property	Value	Source
Space group	P 1 21 1	Depositor
Cell constants a, b, c, α , β , γ	74.33Å 89.37Å 82.75Å 90.00° 115.41° 90.00°	Depositor
Resolution (Å)	65.96 – 1.76 57.34 – 1.76	Depositor EDS
% Data completeness (in resolution range)	87.7 (65.96-1.76) 87.7 (57.34-1.76)	Depositor EDS
R_{merge}	0.06	Depositor
R_{sym}	(Not available)	Depositor
$\langle I/\sigma(I) \rangle$ ¹	2.06 (at 1.76Å)	Xtrriage
Refinement program	REFMAC 5.8.0135	Depositor
R, R_{free}	0.176 , 0.225 0.177 , 0.225	Depositor DCC
R_{free} test set	4279 reflections (5.04%)	wwPDB-VP
Wilson B-factor (Å ²)	18.4	Xtrriage
Anisotropy	0.087	Xtrriage
Bulk solvent k_{sol} (e/Å ³), B_{sol} (Å ²)	0.35 , 46.4	EDS
L-test for twinning ²	$\langle L \rangle = 0.49$, $\langle L^2 \rangle = 0.33$	Xtrriage
Estimated twinning fraction	0.014 for h,-k,-h-l	Xtrriage
F_o, F_c correlation	0.96	EDS
Total number of atoms	8264	wwPDB-VP
Average B, all atoms (Å ²)	22.0	wwPDB-VP

Xtrriage's analysis on translational NCS is as follows: *The analyses of the Patterson function reveals a significant off-origin peak that is 26.74 % of the origin peak, indicating pseudo-translational symmetry. The chance of finding a peak of this or larger height randomly in a structure without pseudo-translational symmetry is equal to 2.4920e-03. The detected translational NCS is most likely also responsible for the elevated intensity ratio.*

¹Intensities estimated from amplitudes.

²Theoretical values of $\langle |L| \rangle$, $\langle L^2 \rangle$ for acentric reflections are 0.5, 0.333 respectively for untwinned datasets, and 0.375, 0.2 for perfectly twinned datasets.

5 Model quality [i](#)

5.1 Standard geometry [i](#)

Bond lengths and bond angles in the following residue types are not validated in this section: NAP, CSX, 6JM, ACT

The Z score for a bond length (or angle) is the number of standard deviations the observed value is removed from the expected value. A bond length (or angle) with $|Z| > 5$ is considered an outlier worth inspection. RMSZ is the root-mean-square of all Z scores of the bond lengths (or angles).

Mol	Chain	Bond lengths		Bond angles	
		RMSZ	# Z >5	RMSZ	# Z >5
1	A	0.84	0/1900	0.86	0/2583
1	B	0.92	0/1917	0.90	0/2604
1	C	0.89	0/1826	0.87	0/2482
2	D	0.84	0/1891	0.84	0/2569
All	All	0.87	0/7534	0.87	0/10238

There are no bond length outliers.

There are no bond angle outliers.

There are no chirality outliers.

There are no planarity outliers.

5.2 Too-close contacts [i](#)

In the following table, the Non-H and H(model) columns list the number of non-hydrogen atoms and hydrogen atoms in the chain respectively. The H(added) column lists the number of hydrogen atoms added and optimized by MolProbity. The Clashes column lists the number of clashes within the asymmetric unit, whereas Symm-Clashes lists symmetry related clashes.

Mol	Chain	Non-H	H(model)	H(added)	Clashes	Symm-Clashes
1	A	1852	0	1874	13	0
1	B	1865	0	1893	15	0
1	C	1782	0	1793	13	1
2	D	1845	0	1878	24	1
3	A	48	0	25	0	0
3	B	48	0	25	2	0
3	C	48	0	25	1	0
3	D	48	0	25	2	0
4	A	4	0	3	4	0

Continued on next page...

Continued from previous page...

Mol	Chain	Non-H	H(model)	H(added)	Clashes	Symm-Clashes
4	C	4	0	3	0	0
5	A	21	0	0	1	0
5	B	21	0	0	3	0
5	D	21	0	0	3	0
6	A	182	0	0	3	0
6	B	191	0	0	0	0
6	C	140	0	0	1	0
6	D	144	0	0	1	0
All	All	8264	0	7544	54	1

The all-atom clashscore is defined as the number of clashes found per 1000 atoms (including hydrogen atoms). The all-atom clashscore for this structure is 4.

All (54) close contacts within the same asymmetric unit are listed below, sorted by their clash magnitude.

Atom-1	Atom-2	Interatomic distance (Å)	Clash overlap (Å)
1:A:17:ARG:HD3	4:A:302:ACT:H3	1.65	0.77
2:D:164:VAL:HG22	2:D:179:HIS:CD2	2.21	0.75
1:B:206[A]:VAL:HG12	5:B:302:6JM:CAP	2.24	0.68
2:D:78:ASN:OD1	2:D:141:ARG:NH1	2.31	0.63
2:D:206:VAL:HG12	5:D:302:6JM:CAP	2.30	0.62
1:B:67[B]:ASN:ND2	2:D:117:GLU:HG3	2.16	0.60
4:A:302:ACT:CH3	6:A:456:HOH:O	2.48	0.60
1:B:164:VAL:HG22	1:B:179:HIS:CD2	2.38	0.58
1:A:164:VAL:HG22	1:A:179:HIS:CD2	2.39	0.58
1:C:65:ASN:HA	1:C:69:LEU:HD22	1.85	0.57
2:D:175[A]:ASN:OD1	6:D:401:HOH:O	2.18	0.57
1:C:164:VAL:HG22	1:C:179:HIS:CD2	2.40	0.56
1:B:206[B]:VAL:HG23	1:B:263:LEU:HD22	1.87	0.56
1:A:65:ASN:HA	1:A:69:LEU:HD22	1.89	0.54
1:B:103:VAL:HG21	2:D:195:TYR:OH	2.08	0.54
1:C:250[A]:GLN:HG2	6:C:459:HOH:O	2.08	0.53
4:A:302:ACT:H3	6:A:456:HOH:O	2.09	0.53
2:D:9:THR:HA	2:D:33:HIS:HB3	1.92	0.51
1:C:250[A]:GLN:HG3	2:D:236:GLN:HE21	1.77	0.49
1:C:254:GLY:HA3	2:D:265:LEU:HD11	1.92	0.49
1:C:9:THR:HA	1:C:33:HIS:HB3	1.93	0.49
1:A:206[B]:VAL:HG12	5:A:303:6JM:CAP	2.42	0.49
1:B:191:GLU:HA	2:D:169:MET:SD	2.53	0.48
2:D:65:ASN:HA	2:D:69:LEU:HD22	1.95	0.48
2:D:221:TRP:CZ3	5:D:302:6JM:OAR	2.66	0.47

Continued on next page...

Continued from previous page...

Atom-1	Atom-2	Interatomic distance (Å)	Clash overlap (Å)
1:B:221:TRP:CE3	5:B:302:6JM:OAR	2.67	0.47
1:A:9:THR:HA	1:A:33:HIS:HB3	1.96	0.47
2:D:115:THR:OG1	2:D:117:GLU:HG2	2.14	0.47
1:A:193:ALA:HB3	1:A:194:PRO:HD3	1.98	0.46
1:B:15:ILE:HB	3:B:301:NAP:H51N	1.98	0.46
1:C:250[A]:GLN:HG3	2:D:236:GLN:NE2	2.31	0.46
1:B:102:LEU:O	2:D:136[B]:MET:HG3	2.16	0.46
4:A:302:ACT:H1	6:A:456:HOH:O	2.14	0.46
2:D:35:HIS:HB2	3:D:301:NAP:C2A	2.46	0.45
1:C:35:HIS:HB2	3:C:301:NAP:C2A	2.47	0.45
2:D:221:TRP:CE3	5:D:302:6JM:OAR	2.70	0.45
1:C:232:ALA:HB2	2:D:251:TYR:CE2	2.53	0.43
1:A:266:VAL:HB	2:D:268:ALA:HB2	2.00	0.43
1:B:9:THR:HA	1:B:33:HIS:HB3	2.00	0.42
1:A:267:HIS:CE1	2:D:221:TRP:HH2	2.37	0.42
1:C:250[A]:GLN:NE2	2:D:236:GLN:HE21	2.17	0.42
1:B:198:ARG:HD2	1:B:252:ILE:O	2.20	0.42
1:A:67:ASN:HA	1:C:117:GLU:HG3	2.02	0.42
1:A:2:GLU:CG	1:A:86:ARG:HH11	2.33	0.41
1:A:232:ALA:HB2	1:B:251:TYR:CE2	2.55	0.41
2:D:205:GLY:O	3:D:301:NAP:H4N	2.21	0.41
1:B:115:THR:O	1:B:119:GLN:HG3	2.20	0.41
1:B:35:HIS:HB2	3:B:301:NAP:C2A	2.50	0.41
1:A:22:LYS:HG2	1:A:242:ILE:HG12	2.02	0.41
2:D:26:THR:O	2:D:26:THR:HG22	2.21	0.41
1:B:206[A]:VAL:HG12	5:B:302:6JM:CAK	2.51	0.41
1:A:192:LEU:HB3	1:A:197:ILE:HB	2.03	0.40
1:C:130:ALA:HB3	1:C:131:PRO:HD3	2.04	0.40
1:C:250[A]:GLN:CG	2:D:236:GLN:HE21	2.35	0.40

All (1) symmetry-related close contacts are listed below. The label for Atom-2 includes the symmetry operator and encoded unit-cell translations to be applied.

Atom-1	Atom-2	Interatomic distance (Å)	Clash overlap (Å)
1:C:233:SER:OG	2:D:215:GLU:OE2 2_556	2.18	0.02

5.3 Torsion angles [i](#)

5.3.1 Protein backbone [i](#)

In the following table, the Percentiles column shows the percent Ramachandran outliers of the chain as a percentile score with respect to all X-ray entries followed by that with respect to entries of similar resolution.

The Analysed column shows the number of residues for which the backbone conformation was analysed, and the total number of residues.

Mol	Chain	Analysed	Favoured	Allowed	Outliers	Percentiles	
1	A	250/288 (87%)	241 (96%)	9 (4%)	0	100	100
1	B	251/288 (87%)	242 (96%)	9 (4%)	0	100	100
1	C	237/288 (82%)	228 (96%)	9 (4%)	0	100	100
2	D	250/288 (87%)	241 (96%)	9 (4%)	0	100	100
All	All	988/1152 (86%)	952 (96%)	36 (4%)	0	100	100

There are no Ramachandran outliers to report.

5.3.2 Protein sidechains [i](#)

In the following table, the Percentiles column shows the percent sidechain outliers of the chain as a percentile score with respect to all X-ray entries followed by that with respect to entries of similar resolution.

The Analysed column shows the number of residues for which the sidechain conformation was analysed, and the total number of residues.

Mol	Chain	Analysed	Rotameric	Outliers	Percentiles	
1	A	194/231 (84%)	193 (100%)	1 (0%)	88	83
1	B	197/231 (85%)	195 (99%)	2 (1%)	76	63
1	C	187/231 (81%)	185 (99%)	2 (1%)	73	60
2	D	194/230 (84%)	193 (100%)	1 (0%)	88	83
All	All	772/923 (84%)	766 (99%)	6 (1%)	84	72

All (6) residues with a non-rotameric sidechain are listed below:

Mol	Chain	Res	Type
1	A	242	ILE
1	B	67[A]	ASN

Continued on next page...

Continued from previous page...

Mol	Chain	Res	Type
1	B	67[B]	ASN
1	C	22	LYS
1	C	166	GLN
2	D	22	LYS

Some sidechains can be flipped to improve hydrogen bonding and reduce clashes. All (7) such sidechains are listed below:

Mol	Chain	Res	Type
1	A	179	HIS
1	B	65	ASN
1	B	119	GLN
1	B	179	HIS
2	D	67	ASN
2	D	179	HIS
2	D	236	GLN

5.3.3 RNA [i](#)

There are no RNA molecules in this entry.

5.4 Non-standard residues in protein, DNA, RNA chains [i](#)

1 non-standard protein/DNA/RNA residue is modelled in this entry.

In the following table, the Counts columns list the number of bonds (or angles) for which Mogul statistics could be retrieved, the number of bonds (or angles) that are observed in the model and the number of bonds (or angles) that are defined in the Chemical Component Dictionary. The Link column lists molecule types, if any, to which the group is linked. The Z score for a bond length (or angle) is the number of standard deviations the observed value is removed from the expected value. A bond length (or angle) with $|Z| > 2$ is considered an outlier worth inspection. RMSZ is the root-mean-square of all Z scores of the bond lengths (or angles).

Mol	Type	Chain	Res	Link	Bond lengths			Bond angles		
					Counts	RMSZ	$\# Z > 2$	Counts	RMSZ	$\# Z > 2$
2	CSX	D	168	2	3,6,7	1.04	0	1,6,8	1.76	0

In the following table, the Chirals column lists the number of chiral outliers, the number of chiral centers analysed, the number of these observed in the model and the number defined in the Chemical Component Dictionary. Similar counts are reported in the Torsion and Rings columns. '-' means no outliers of that kind were identified.

Mol	Type	Chain	Res	Link	Chirals	Torsions	Rings
2	CSX	D	168	2	-	0/1/5/7	-

There are no bond length outliers.

There are no bond angle outliers.

There are no chirality outliers.

There are no torsion outliers.

There are no ring outliers.

No monomer is involved in short contacts.

5.5 Carbohydrates [i](#)

There are no monosaccharides in this entry.

5.6 Ligand geometry [i](#)

9 ligands are modelled in this entry.

In the following table, the Counts columns list the number of bonds (or angles) for which Mogul statistics could be retrieved, the number of bonds (or angles) that are observed in the model and the number of bonds (or angles) that are defined in the Chemical Component Dictionary. The Link column lists molecule types, if any, to which the group is linked. The Z score for a bond length (or angle) is the number of standard deviations the observed value is removed from the expected value. A bond length (or angle) with $|Z| > 2$ is considered an outlier worth inspection. RMSZ is the root-mean-square of all Z scores of the bond lengths (or angles).

Mol	Type	Chain	Res	Link	Bond lengths			Bond angles		
					Counts	RMSZ	# Z > 2	Counts	RMSZ	# Z > 2
3	NAP	D	301	-	45,52,52	1.22	5 (11%)	56,80,80	1.34	4 (7%)
3	NAP	A	301	-	45,52,52	1.25	4 (8%)	56,80,80	1.43	11 (19%)
3	NAP	C	301	-	45,52,52	1.10	2 (4%)	56,80,80	1.54	10 (17%)
5	6JM	D	302	-	19,23,23	1.41	1 (5%)	22,34,34	1.44	3 (13%)
5	6JM	B	302	-	19,23,23	1.16	1 (5%)	22,34,34	1.24	1 (4%)
3	NAP	B	301	-	45,52,52	1.28	6 (13%)	56,80,80	1.62	8 (14%)
4	ACT	C	302	-	1,3,3	1.78	0	0,3,3	0.00	-
4	ACT	A	302	-	1,3,3	1.12	0	0,3,3	0.00	-
5	6JM	A	303	-	19,23,23	1.22	2 (10%)	22,34,34	1.64	6 (27%)

In the following table, the Chirals column lists the number of chiral outliers, the number of chiral centers analysed, the number of these observed in the model and the number defined in the

Chemical Component Dictionary. Similar counts are reported in the Torsion and Rings columns. '-' means no outliers of that kind were identified.

Mol	Type	Chain	Res	Link	Chirals	Torsions	Rings
3	NAP	D	301	-	-	0/31/67/67	0/5/5/5
3	NAP	A	301	-	-	0/31/67/67	0/5/5/5
3	NAP	C	301	-	-	1/31/67/67	0/5/5/5
5	6JM	D	302	-	-	2/4/4/4	0/3/3/3
5	6JM	B	302	-	-	2/4/4/4	0/3/3/3
3	NAP	B	301	-	-	0/31/67/67	0/5/5/5
5	6JM	A	303	-	-	2/4/4/4	0/3/3/3

All (21) bond length outliers are listed below:

Mol	Chain	Res	Type	Atoms	Z	Observed(Å)	Ideal(Å)
5	D	302	6JM	CAM-CAJ	-5.02	1.38	1.46
3	B	301	NAP	C2A-N3A	4.51	1.39	1.32
3	D	301	NAP	P2B-O2B	3.71	1.66	1.59
3	A	301	NAP	P2B-O2B	3.39	1.65	1.59
3	C	301	NAP	C5A-C4A	3.26	1.49	1.40
3	C	301	NAP	C2A-N3A	3.23	1.37	1.32
3	A	301	NAP	O4D-C1D	3.16	1.45	1.41
5	B	302	6JM	CAM-CAJ	-3.05	1.41	1.46
3	A	301	NAP	C5A-C4A	2.96	1.48	1.40
3	D	301	NAP	C2A-N3A	2.93	1.36	1.32
3	D	301	NAP	O4D-C1D	2.80	1.45	1.41
3	B	301	NAP	O4D-C1D	2.73	1.44	1.41
5	A	303	6JM	CAM-CAJ	-2.72	1.41	1.46
3	D	301	NAP	C2A-N1A	2.51	1.38	1.33
3	B	301	NAP	C5A-C4A	2.35	1.47	1.40
3	B	301	NAP	C7N-N7N	2.23	1.37	1.33
3	B	301	NAP	O4B-C4B	-2.15	1.40	1.45
3	B	301	NAP	C6A-C5A	2.10	1.51	1.43
5	A	303	6JM	CAD-CAC	2.09	1.41	1.37
3	D	301	NAP	C2D-C1D	-2.09	1.50	1.53
3	A	301	NAP	C8A-N7A	2.02	1.38	1.34

All (43) bond angle outliers are listed below:

Mol	Chain	Res	Type	Atoms	Z	Observed(°)	Ideal(°)
3	D	301	NAP	C1B-N9A-C4A	-5.20	117.50	126.64
3	B	301	NAP	C1B-N9A-C4A	-4.59	118.58	126.64
3	A	301	NAP	C1B-N9A-C4A	-4.39	118.93	126.64
3	B	301	NAP	O7N-C7N-C3N	-4.39	114.38	119.63

Continued on next page...

Continued from previous page...

Mol	Chain	Res	Type	Atoms	Z	Observed(°)	Ideal(°)
3	C	301	NAP	C3N-C7N-N7N	4.14	122.72	117.75
3	D	301	NAP	N3A-C2A-N1A	-4.04	122.37	128.68
3	B	301	NAP	C3N-C7N-N7N	3.99	122.54	117.75
3	B	301	NAP	N3A-C2A-N1A	-3.96	122.49	128.68
5	A	303	6JM	CAD-CAE-CAF	3.53	120.37	116.39
5	A	303	6JM	CAC-CAD-CAE	-3.48	117.50	120.89
3	C	301	NAP	O2B-P2B-O1X	-3.48	95.95	109.39
3	A	301	NAP	N3A-C2A-N1A	-3.41	123.34	128.68
3	C	301	NAP	C4A-C5A-N7A	-3.38	105.88	109.40
3	C	301	NAP	C1B-N9A-C4A	-3.37	120.72	126.64
3	B	301	NAP	O2A-PA-O1A	3.33	128.70	112.24
5	A	303	6JM	CAH-CAI-CAJ	3.21	124.94	119.45
3	C	301	NAP	O7N-C7N-N7N	-3.19	118.04	122.58
5	D	302	6JM	CAN-CAM-CAJ	-3.14	115.91	120.29
3	A	301	NAP	C2A-N1A-C6A	2.92	123.75	118.75
3	B	301	NAP	C2A-N1A-C6A	2.88	123.68	118.75
3	D	301	NAP	O2N-PN-O1N	2.64	125.27	112.24
3	C	301	NAP	N3A-C2A-N1A	-2.62	124.58	128.68
3	C	301	NAP	PN-O3-PA	-2.55	124.06	132.83
3	A	301	NAP	C3N-C7N-N7N	2.52	120.78	117.75
5	B	302	6JM	CAD-CAE-CAF	2.42	119.12	116.39
3	A	301	NAP	PN-O3-PA	-2.40	124.58	132.83
3	A	301	NAP	C5N-C4N-C3N	-2.38	117.53	120.34
3	C	301	NAP	C2A-N1A-C6A	2.37	122.81	118.75
5	D	302	6JM	CAL-CAM-CAJ	2.33	123.53	120.29
3	A	301	NAP	O4D-C1D-C2D	-2.30	103.57	106.93
3	A	301	NAP	O2N-PN-O1N	2.22	123.20	112.24
5	A	303	6JM	CAL-CAK-CAP	-2.21	118.24	120.50
3	B	301	NAP	O4B-C4B-C3B	-2.18	100.80	105.11
5	A	303	6JM	CAL-CAM-CAJ	2.16	123.31	120.29
3	A	301	NAP	C3D-C2D-C1D	2.10	104.14	100.98
3	B	301	NAP	C4A-C5A-N7A	-2.09	107.22	109.40
3	A	301	NAP	O2X-P2B-O1X	2.08	118.82	110.68
3	D	301	NAP	PN-O3-PA	-2.08	125.70	132.83
5	A	303	6JM	CAA-CAB-CAC	2.07	122.53	120.15
5	D	302	6JM	CAH-CAI-CAJ	2.03	122.92	119.45
3	A	301	NAP	N6A-C6A-N1A	2.02	122.77	118.57
3	C	301	NAP	O2D-C2D-C3D	2.00	118.31	111.82
3	C	301	NAP	O3X-P2B-O1X	2.00	118.52	110.68

There are no chirality outliers.

All (7) torsion outliers are listed below:

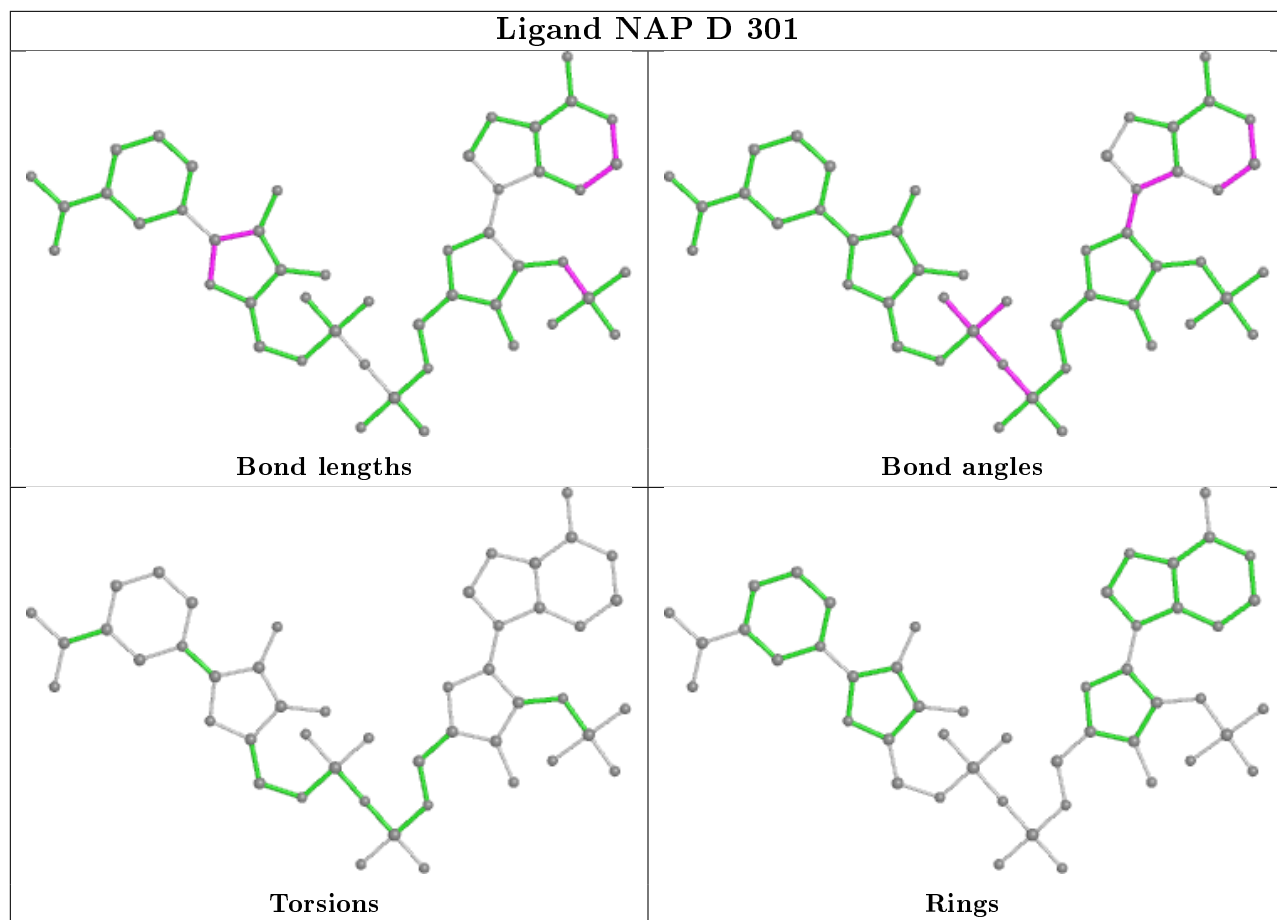
Mol	Chain	Res	Type	Atoms
5	D	302	6JM	CAI-CAJ-CAM-CAN
5	B	302	6JM	CAI-CAJ-CAM-CAN
5	B	302	6JM	CAI-CAJ-CAM-CAL
5	A	303	6JM	CAI-CAJ-CAM-CAN
5	A	303	6JM	CAI-CAJ-CAM-CAL
5	D	302	6JM	CAI-CAJ-CAM-CAL
3	C	301	NAP	C5B-O5B-PA-O1A

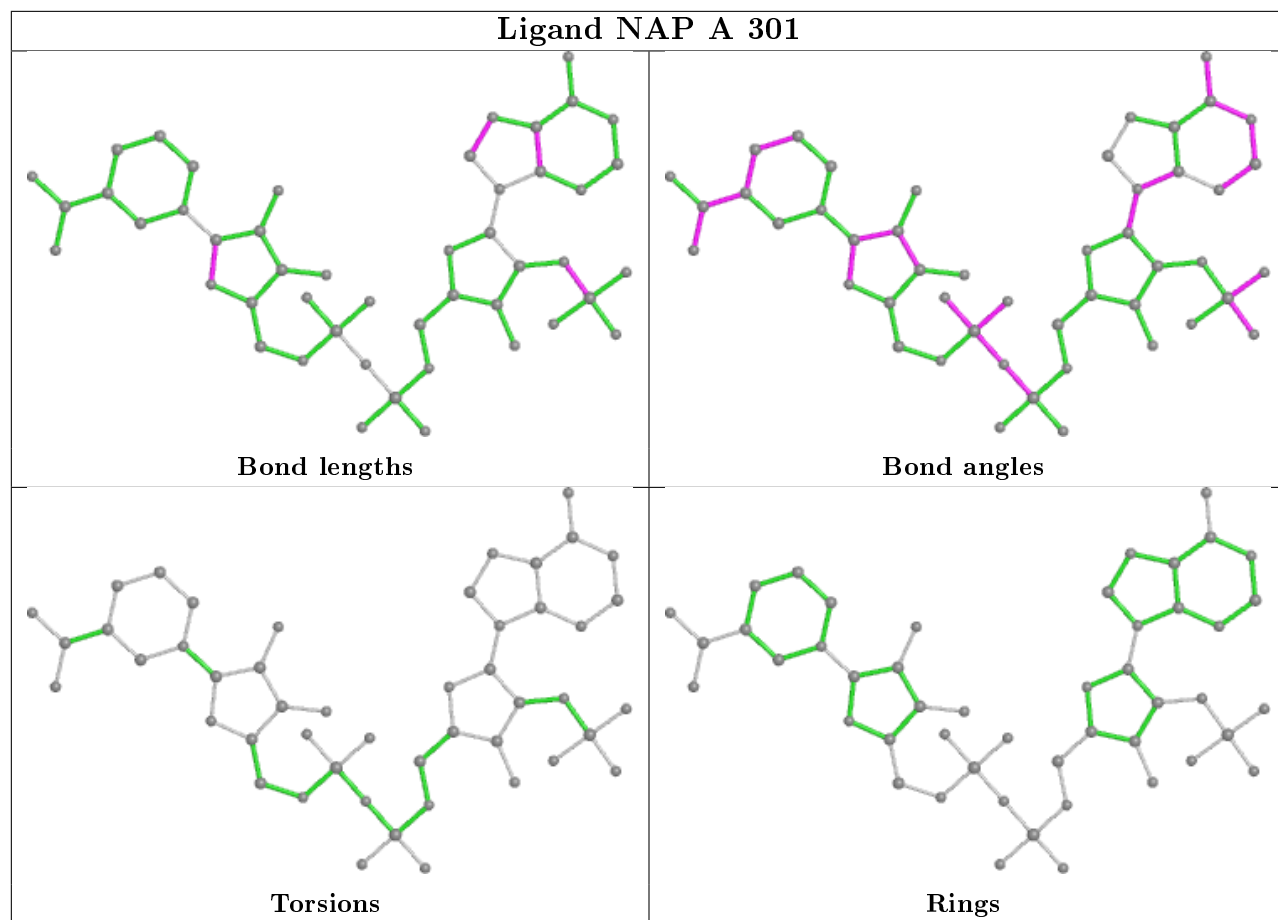
There are no ring outliers.

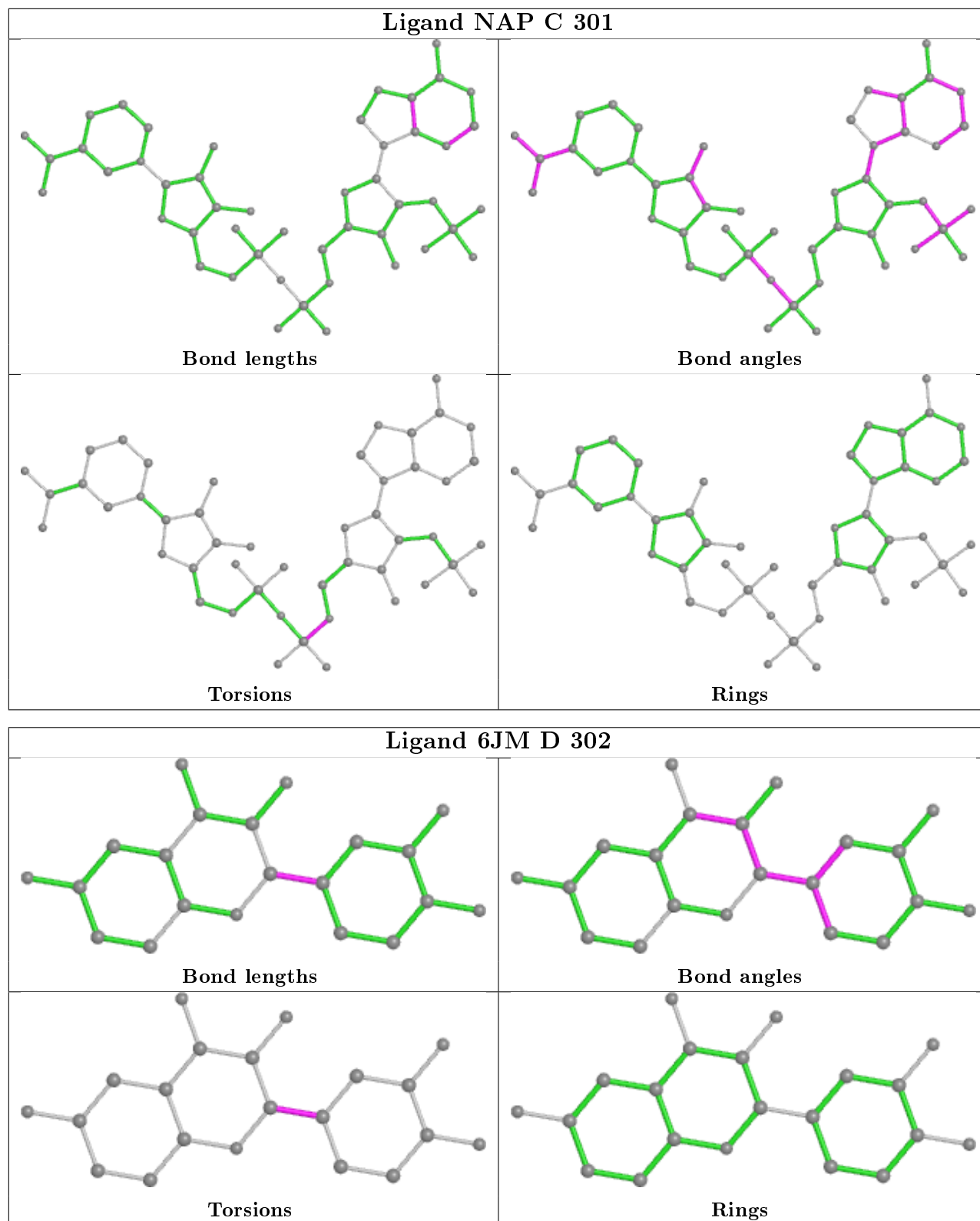
7 monomers are involved in 16 short contacts:

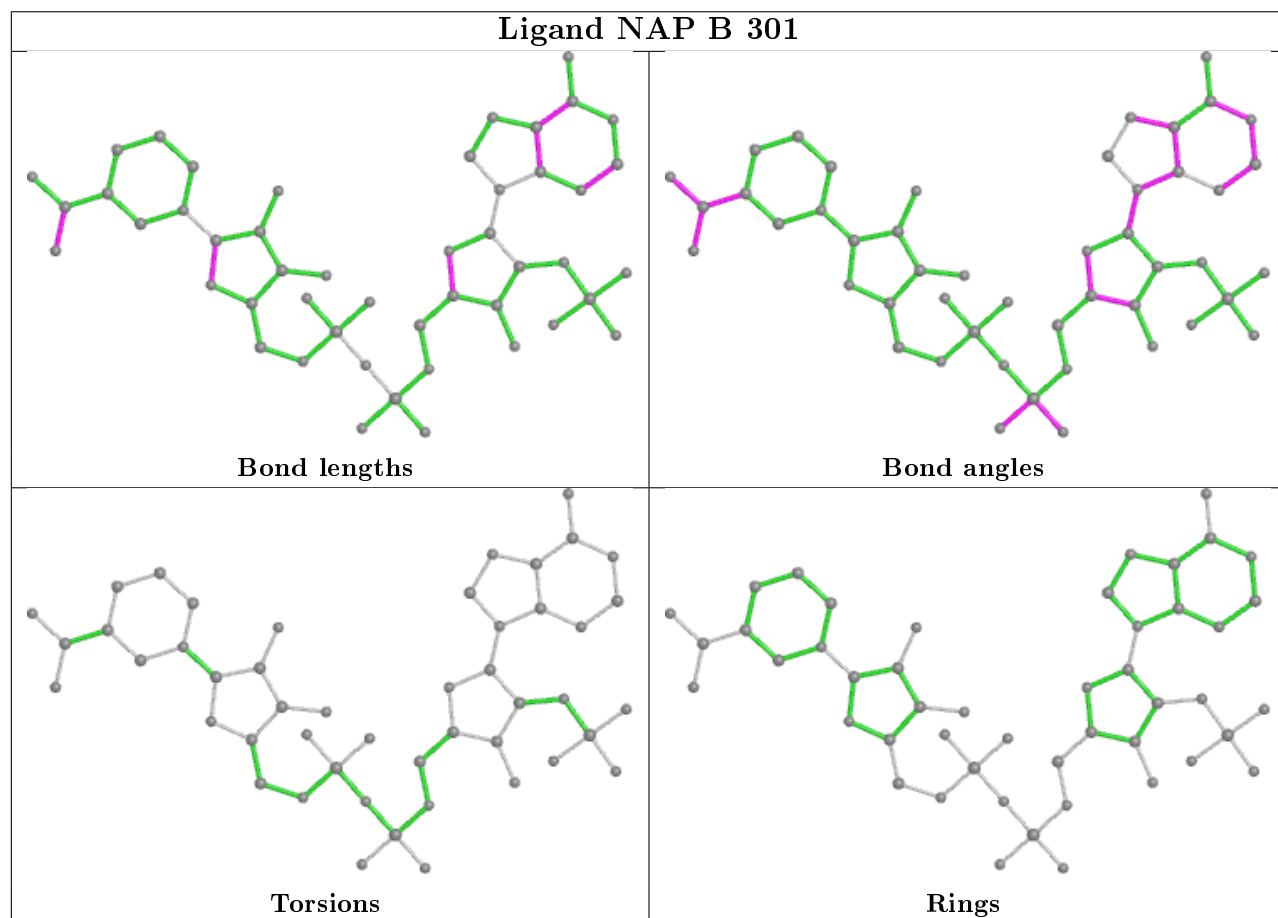
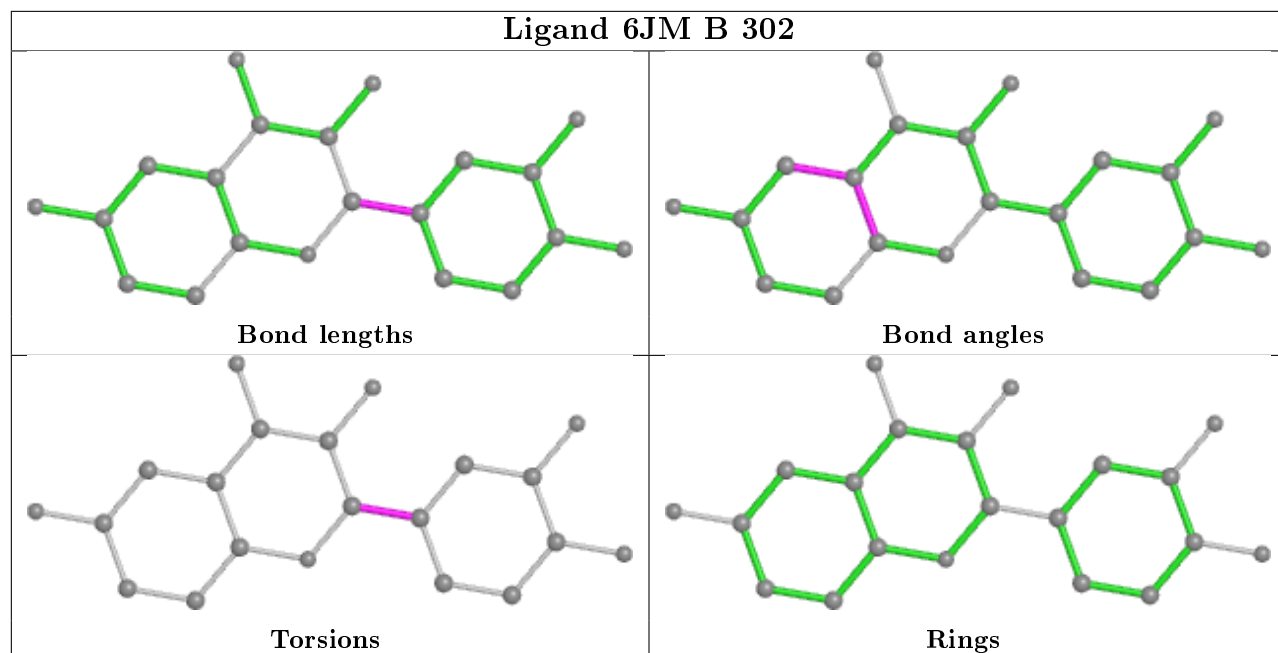
Mol	Chain	Res	Type	Clashes	Symm-Clashes
3	D	301	NAP	2	0
3	C	301	NAP	1	0
5	D	302	6JM	3	0
5	B	302	6JM	3	0
3	B	301	NAP	2	0
4	A	302	ACT	4	0
5	A	303	6JM	1	0

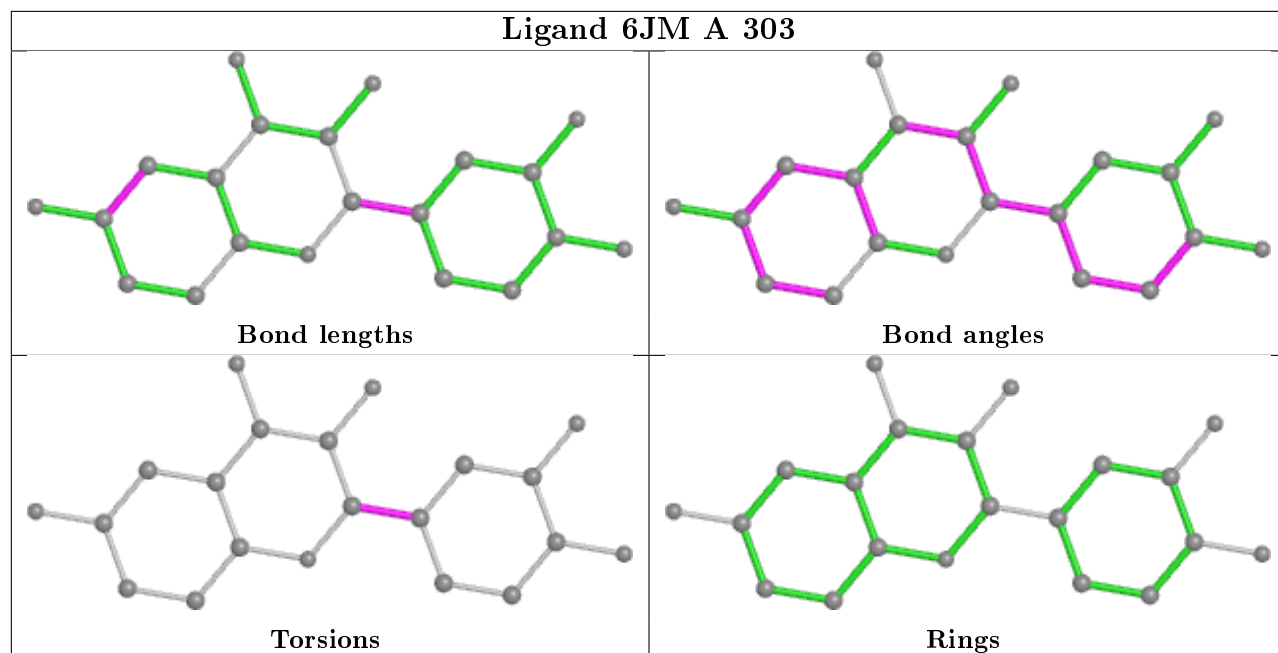
The following is a two-dimensional graphical depiction of Mogul quality analysis of bond lengths, bond angles, torsion angles, and ring geometry for all instances of the Ligand of Interest. In addition, ligands with molecular weight > 250 and outliers as shown on the validation Tables will also be included. For torsion angles, if less than 5% of the Mogul distribution of torsion angles is within 10 degrees of the torsion angle in question, then that torsion angle is considered an outlier. Any bond that is central to one or more torsion angles identified as an outlier by Mogul will be highlighted in the graph. For rings, the root-mean-square deviation (RMSD) between the ring in question and similar rings identified by Mogul is calculated over all ring torsion angles. If the average RMSD is greater than 60 degrees and the minimal RMSD between the ring in question and any Mogul-identified rings is also greater than 60 degrees, then that ring is considered an outlier. The outliers are highlighted in purple. The color gray indicates Mogul did not find sufficient equivalents in the CSD to analyse the geometry.











5.7 Other polymers [i](#)

There are no such residues in this entry.

5.8 Polymer linkage issues [i](#)

There are no chain breaks in this entry.

6 Fit of model and data [i](#)

6.1 Protein, DNA and RNA chains [i](#)

In the following table, the column labelled ‘#RSRZ> 2’ contains the number (and percentage) of RSRZ outliers, followed by percent RSRZ outliers for the chain as percentile scores relative to all X-ray entries and entries of similar resolution. The OWAB column contains the minimum, median, 95th percentile and maximum values of the occupancy-weighted average B-factor per residue. The column labelled ‘Q< 0.9’ lists the number of (and percentage) of residues with an average occupancy less than 0.9.

Mol	Chain	Analysed	<RSRZ>	#RSRZ>2	OWAB(Å ²)	Q<0.9
1	A	249/288 (86%)	-0.46	0 100 100	11, 20, 34, 51	11 (4%)
1	B	248/288 (86%)	-0.47	2 (0%) 86 90	11, 18, 31, 60	5 (2%)
1	C	239/288 (82%)	-0.36	4 (1%) 70 77	12, 22, 37, 55	16 (6%)
2	D	247/288 (85%)	-0.47	0 100 100	12, 21, 35, 54	8 (3%)
All	All	983/1152 (85%)	-0.44	6 (0%) 89 92	11, 20, 35, 60	40 (4%)

All (6) RSRZ outliers are listed below:

Mol	Chain	Res	Type	RSRZ
1	C	221	TRP	4.2
1	C	219	ASP	3.3
1	B	212	ALA	3.1
1	C	210	PRO	2.7
1	C	232	ALA	2.7
1	B	211	VAL	2.2

6.2 Non-standard residues in protein, DNA, RNA chains [i](#)

In the following table, the Atoms column lists the number of modelled atoms in the group and the number defined in the chemical component dictionary. The B-factors column lists the minimum, median, 95th percentile and maximum values of B factors of atoms in the group. The column labelled ‘Q< 0.9’ lists the number of atoms with occupancy less than 0.9.

Mol	Type	Chain	Res	Atoms	RSCC	RSR	B-factors(Å ²)	Q<0.9
2	CSX	D	168	7/8	0.84	0.15	23,25,30,45	0

6.3 Carbohydrates [i](#)

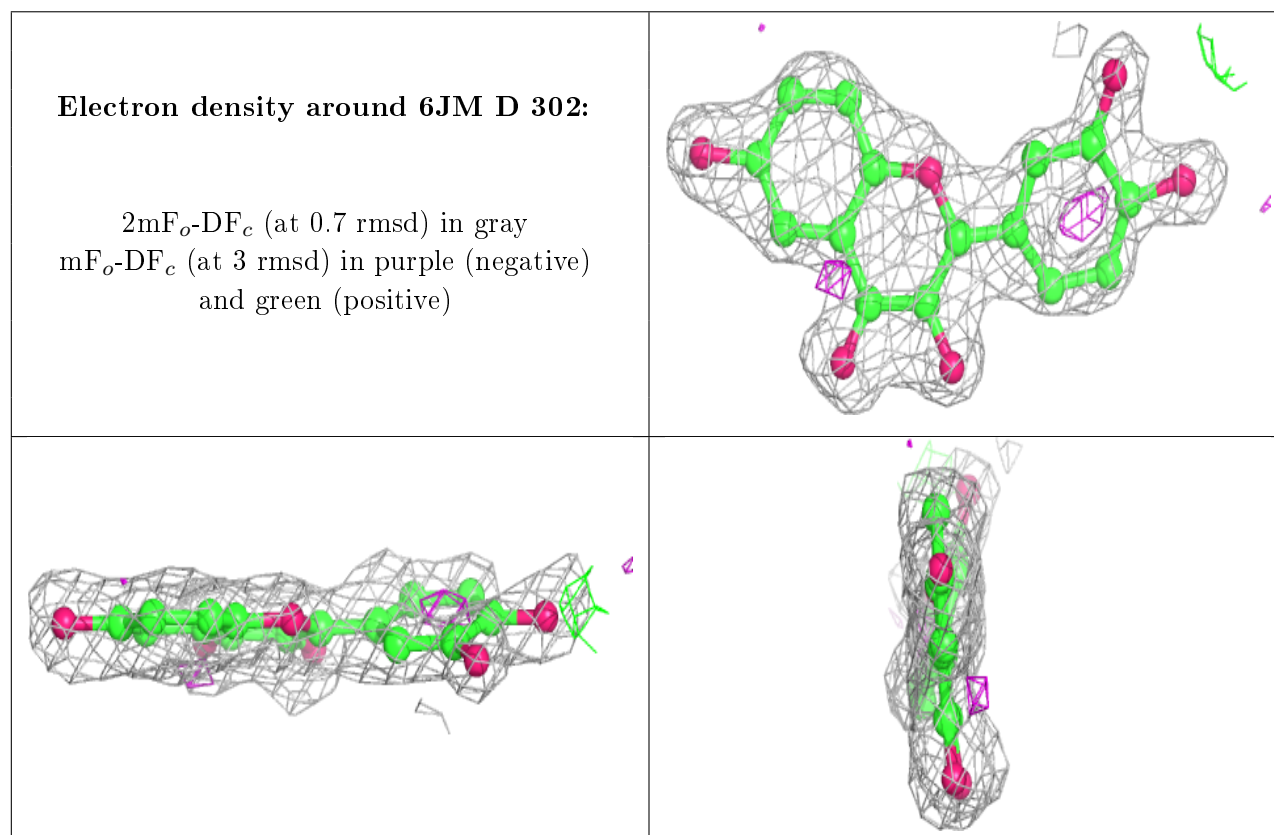
There are no monosaccharides in this entry.

6.4 Ligands [i](#)

In the following table, the Atoms column lists the number of modelled atoms in the group and the number defined in the chemical component dictionary. The B-factors column lists the minimum, median, 95th percentile and maximum values of B factors of atoms in the group. The column labelled 'Q<0.9' lists the number of atoms with occupancy less than 0.9.

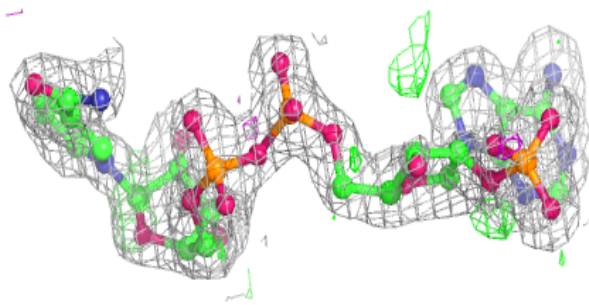
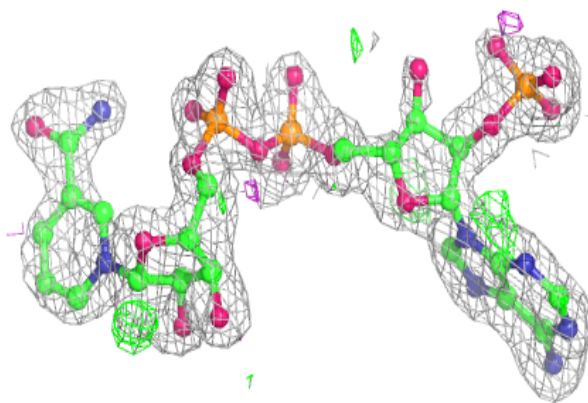
Mol	Type	Chain	Res	Atoms	RSCC	RSR	B-factors(Å ²)	Q<0.9
5	6JM	D	302	21/21	0.89	0.17	27,32,38,39	21
3	NAP	C	301	48/48	0.91	0.13	18,28,35,36	48
5	6JM	B	302	21/21	0.92	0.12	22,26,35,36	21
5	6JM	A	303	21/21	0.93	0.10	20,24,33,37	21
4	ACT	A	302	4/4	0.94	0.08	20,27,28,33	0
4	ACT	C	302	4/4	0.95	0.13	27,32,32,35	0
3	NAP	D	301	48/48	0.97	0.07	15,20,24,26	0
3	NAP	B	301	48/48	0.98	0.07	13,17,19,21	0
3	NAP	A	301	48/48	0.98	0.07	16,17,20,22	0

The following is a graphical depiction of the model fit to experimental electron density of all instances of the Ligand of Interest. In addition, ligands with molecular weight > 250 and outliers as shown on the geometry validation Tables will also be included. Each fit is shown from different orientation to approximate a three-dimensional view.

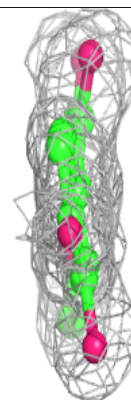
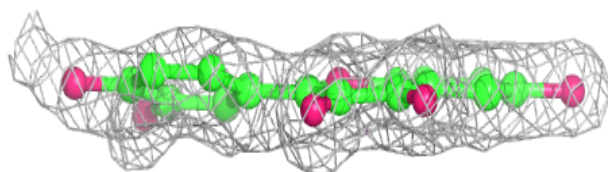
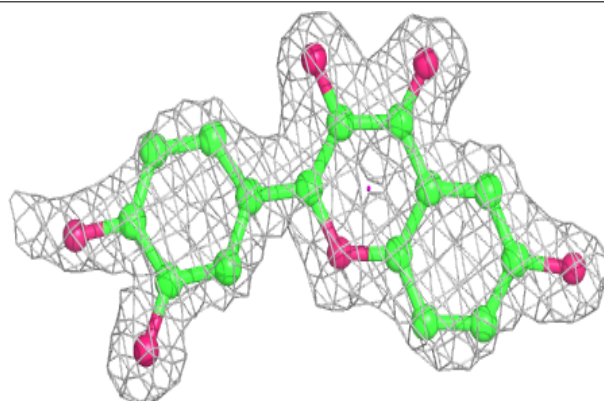


Electron density around NAP C 301:

$2mF_o-DF_c$ (at 0.7 rmsd) in gray
 mF_o-DF_c (at 3 rmsd) in purple (negative)
and green (positive)

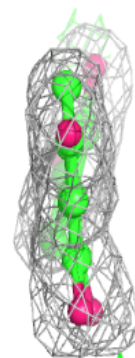
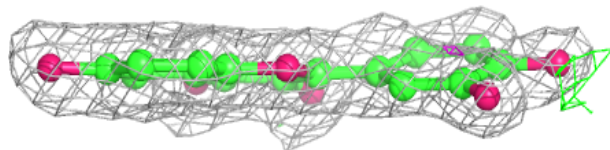
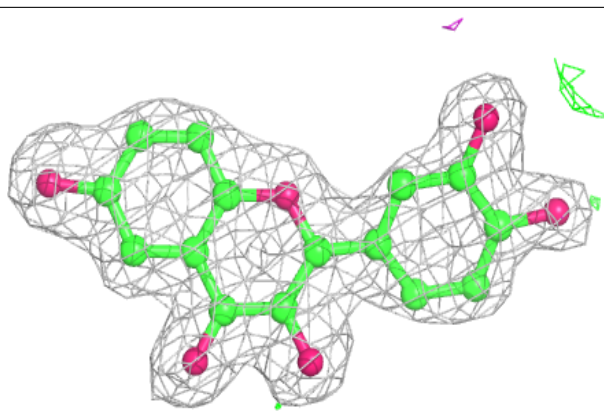
**Electron density around 6JM B 302:**

$2mF_o-DF_c$ (at 0.7 rmsd) in gray
 mF_o-DF_c (at 3 rmsd) in purple (negative)
and green (positive)

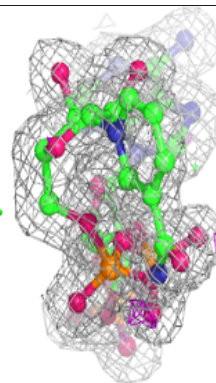
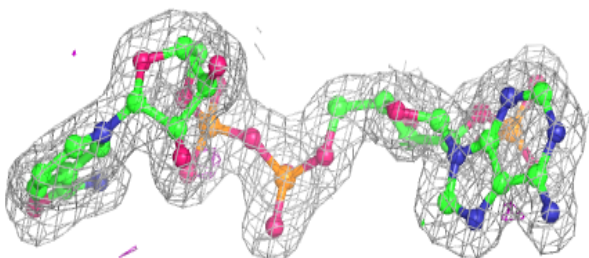
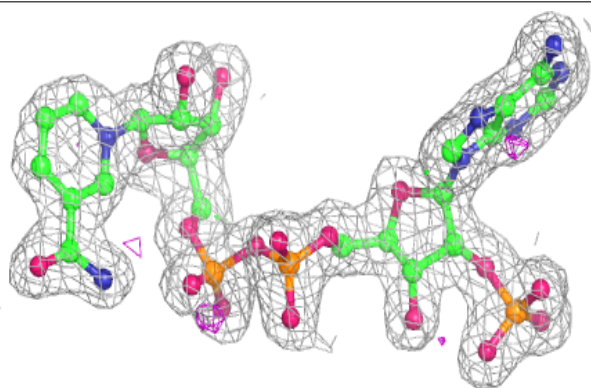


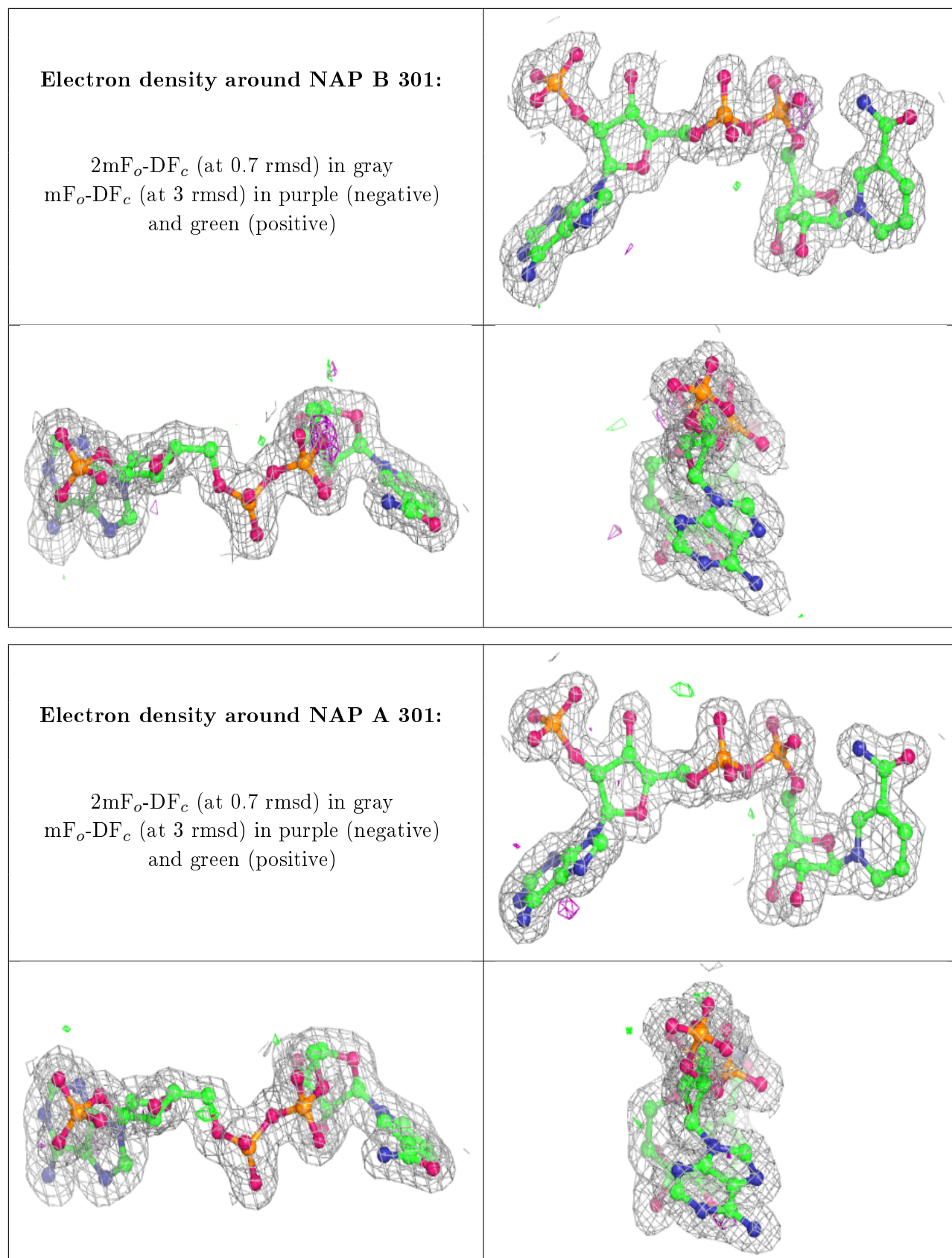
Electron density around 6JM A 303:

$2mF_o-DF_c$ (at 0.7 rmsd) in gray
 mF_o-DF_c (at 3 rmsd) in purple (negative)
and green (positive)

**Electron density around NAP D 301:**

$2mF_o-DF_c$ (at 0.7 rmsd) in gray
 mF_o-DF_c (at 3 rmsd) in purple (negative)
and green (positive)





6.5 Other polymers

There are no such residues in this entry.