



## Full wwPDB EM Validation Report ⓘ

Nov 20, 2022 – 08:37 AM EST

PDB ID : 3JAB  
EMDB ID : EMD-6258  
Title : Domain organization and conformational plasticity of the G protein effector, PDE6  
Authors : Zhang, Z.; He, F.; Constantine, R.; Baker, M.L.; Baehr, W.; Schmid, M.F.; Wensel, T.G.; Agosto, M.A.  
Deposited on : 2015-05-26  
Resolution : 11.00 Å (reported)  
Based on initial models : 3JWR, 12E8, 3IBJ, 3DBA

This is a Full wwPDB EM Validation Report for a publicly released PDB entry.

We welcome your comments at [validation@mail.wwpdb.org](mailto:validation@mail.wwpdb.org)

A user guide is available at

<https://www.wwpdb.org/validation/2017/EMValidationReportHelp>

with specific help available everywhere you see the ⓘ symbol.

The types of validation reports are described at

<http://www.wwpdb.org/validation/2017/FAQs#types>.

---

The following versions of software and data (see [references ⓘ](#)) were used in the production of this report:

EMDB validation analysis : 0.0.1.dev43  
Mogul : 1.8.5 (274361), CSD as541be (2020)  
MolProbity : 4.02b-467  
Percentile statistics : 20191225.v01 (using entries in the PDB archive December 25th 2019)  
MapQ : 1.9.9  
Ideal geometry (proteins) : Engh & Huber (2001)  
Ideal geometry (DNA, RNA) : Parkinson et al. (1996)  
Validation Pipeline (wwPDB-VP) : 2.31.3

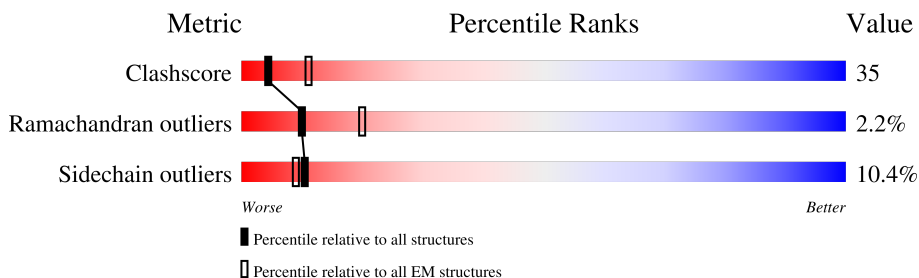
# 1 Overall quality at a glance i

The following experimental techniques were used to determine the structure:

*ELECTRON MICROSCOPY*

The reported resolution of this entry is 11.00 Å.

Percentile scores (ranging between 0-100) for global validation metrics of the entry are shown in the following graphic. The table shows the number of entries on which the scores are based.



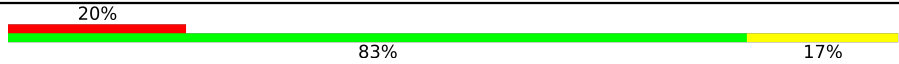

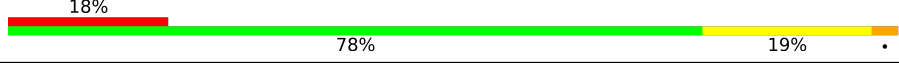

Metric	Whole archive (#Entries)	EM structures (#Entries)
Clashscore	158937	4297
Ramachandran outliers	154571	4023
Sidechain outliers	154315	3826

The table below summarises the geometric issues observed across the polymeric chains and their fit to the map. The red, orange, yellow and green segments of the bar indicate the fraction of residues that contain outliers for  $\geq 3$ , 2, 1 and 0 types of geometric quality criteria respectively. A grey segment represents the fraction of residues that are not modelled. The numeric value for each fraction is indicated below the corresponding segment, with a dot representing fractions  $\leq 5\%$ . The upper red bar (where present) indicates the fraction of residues that have poor fit to the EM map (all-atom inclusion  $< 40\%$ ). The numeric value is given above the bar.

Mol	Chain	Length	Quality of chain
1	A	180	17% (Poor fit) 67% (0 outliers) 26% (1 outlier) 5% (2 outliers)
1	M	180	16% (Poor fit) 67% (0 outliers) 26% (1 outlier) 5% (2 outliers)
2	B	185	5% (Poor fit) 21% (0 outliers) 43% (1 outlier) 19% (2 outliers) 13% (3 outliers)
2	N	185	6% (Poor fit) 19% (0 outliers) 44% (1 outlier) 19% (2 outliers) 13% (3 outliers)
3	C	330	22% (Poor fit) 57% (0 outliers) 38% (1 outlier) 5% (2 outliers)
3	O	330	22% (Poor fit) 57% (0 outliers) 38% (1 outlier) 5% (2 outliers)
4	D	18	39% (Poor fit) 67% (0 outliers) 28% (1 outlier) 6% (2 outliers)
4	P	18	39% (Poor fit) 67% (0 outliers) 28% (1 outlier) 6% (2 outliers)

Continued on next page...

*Continued from previous page...*

Mol	Chain	Length	Quality of chain
5	L	214	
5	R	214	
6	H	221	
6	Q	221	

## 2 Entry composition [i](#)

There are 7 unique types of molecules in this entry. The entry contains 17620 atoms, of which 0 are hydrogens and 0 are deuteriums.

In the tables below, the AltConf column contains the number of residues with at least one atom in alternate conformation and the Trace column contains the number of residues modelled with at most 2 atoms.

- Molecule 1 is a protein called GafA domain of cone phosphodiesterase 6C.

Mol	Chain	Residues	Atoms					AltConf	Trace
			Total	C	N	O	S		
1	A	171	Total	C	N	O	S	0	0
			1368	874	230	256	8		
1	M	171	Total	C	N	O	S	0	0
			1368	874	230	256	8		

- Molecule 2 is a protein called GafB domain of phosphodiesterase 2A.

Mol	Chain	Residues	Atoms					AltConf	Trace
			Total	C	N	O	S		
2	B	161	Total	C	N	O	S	0	0
			1267	805	215	240	7		
2	N	161	Total	C	N	O	S	0	0
			1267	805	215	240	7		

- Molecule 3 is a protein called phosphodiesterase 5/6 chimera catalytic domain.

Mol	Chain	Residues	Atoms					AltConf	Trace
			Total	C	N	O	S		
3	C	328	Total	C	N	O	S	0	0
			2671	1700	465	487	19		
3	O	328	Total	C	N	O	S	0	0
			2671	1700	465	487	19		

- Molecule 4 is a protein called phosphodiesterase 6 gamma subunit inhibitory peptide.

Mol	Chain	Residues	Atoms				AltConf	Trace
			Total	C	N	O		
4	D	17	Total	C	N	O	0	0
			141	92	23	26		
4	P	17	Total	C	N	O	0	0
			141	92	23	26		

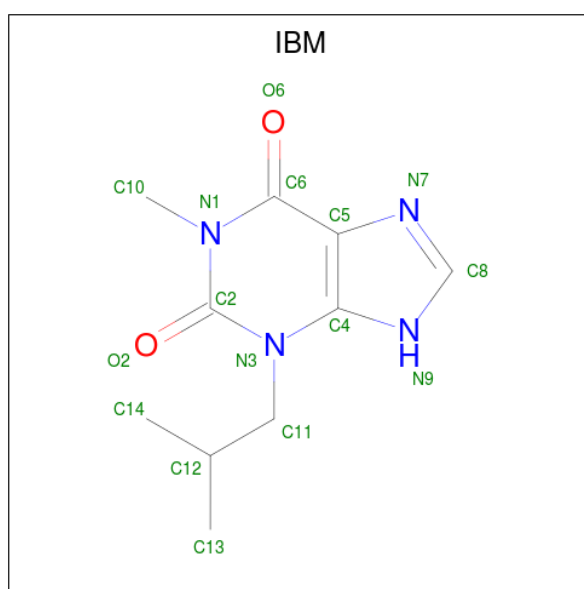
- Molecule 5 is a protein called IgG1-kappa 2E8 light chain.

Mol	Chain	Residues	Atoms					AltConf	Trace
			Total	C	N	O	S		
5	L	214	Total 1649	C 1020	N 277	O 342	S 10	0	0
5	R	214	Total 1649	C 1020	N 277	O 342	S 10	0	0

- Molecule 6 is a protein called IgG1-kappa 2E8 heavy chain.

Mol	Chain	Residues	Atoms					AltConf	Trace
			Total	C	N	O	S		
6	H	221	Total 1682	C 1064	N 276	O 336	S 6	0	0
6	Q	221	Total 1682	C 1064	N 276	O 336	S 6	0	0

- Molecule 7 is 3-ISOBUTYL-1-METHYLNANTHINE (three-letter code: IBM) (formula:  $C_{10}H_{14}N_4O_2$ ).

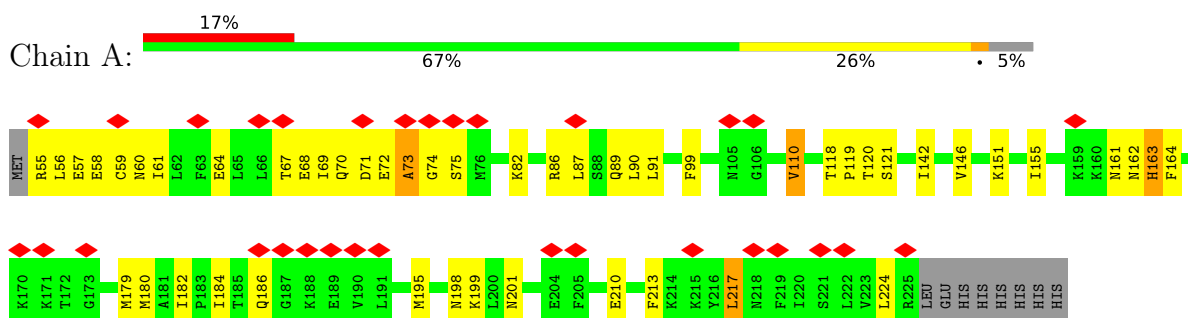


Mol	Chain	Residues	Atoms				AltConf
			Total	C	N	O	
7	C	1	Total 32	C 20	N 8	O 4	0
7	C	1	Total 32	C 20	N 8	O 4	0
7	O	1	Total 32	C 20	N 8	O 4	0
7	O	1	Total 32	C 20	N 8	O 4	0

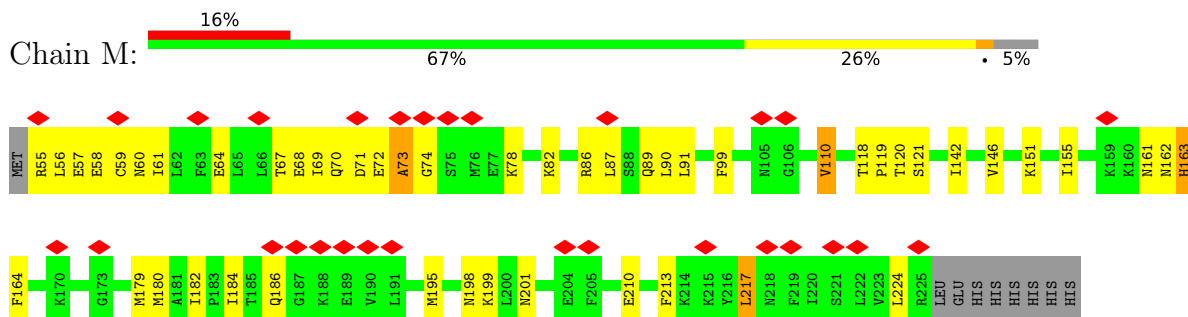
### 3 Residue-property plots

These plots are drawn for all protein, RNA, DNA and oligosaccharide chains in the entry. The first graphic for a chain summarises the proportions of the various outlier classes displayed in the second graphic. The second graphic shows the sequence view annotated by issues in geometry and atom inclusion in map density. Residues are color-coded according to the number of geometric quality criteria for which they contain at least one outlier: green = 0, yellow = 1, orange = 2 and red = 3 or more. A red diamond above a residue indicates a poor fit to the EM map for this residue (all-atom inclusion < 40%). Stretches of 2 or more consecutive residues without any outlier are shown as a green connector. Residues present in the sample, but not in the model, are shown in grey.

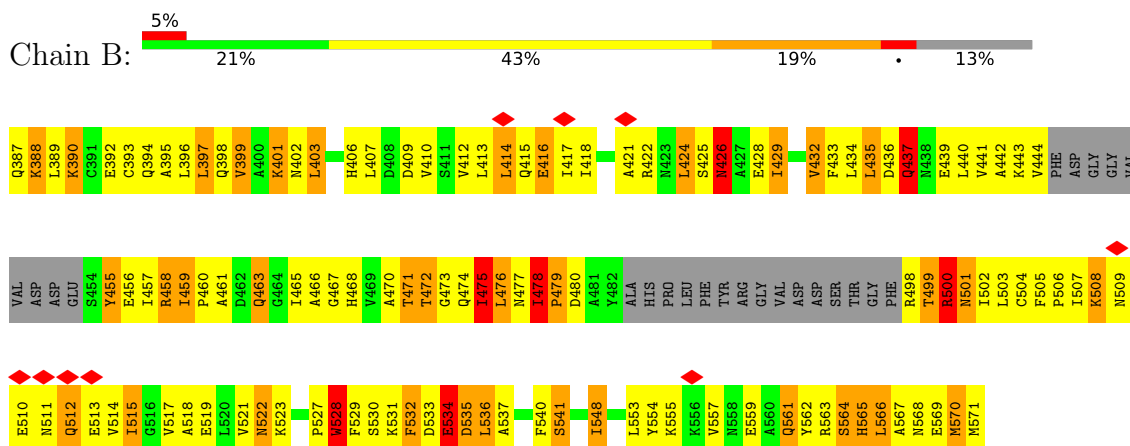
- Molecule 1: GafA domain of cone phosphodiesterase 6C



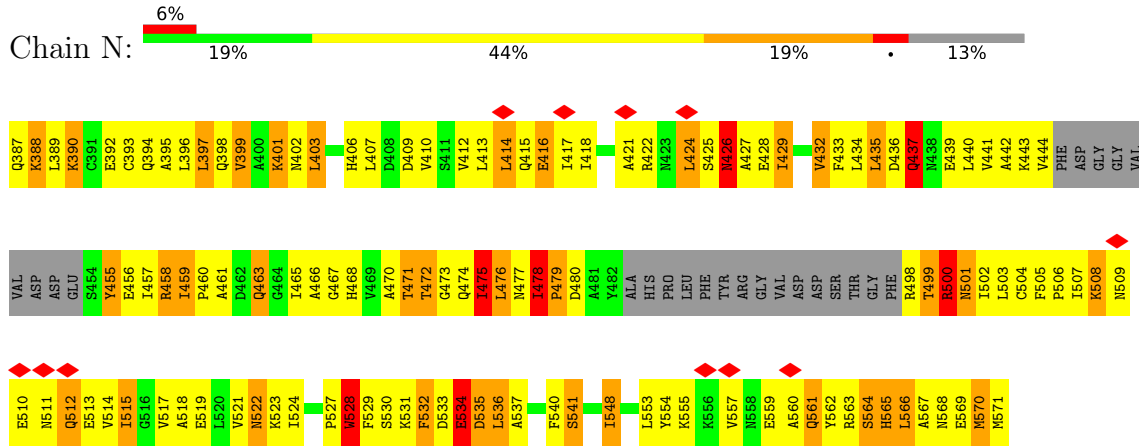
- Molecule 1: GafA domain of cone phosphodiesterase 6C



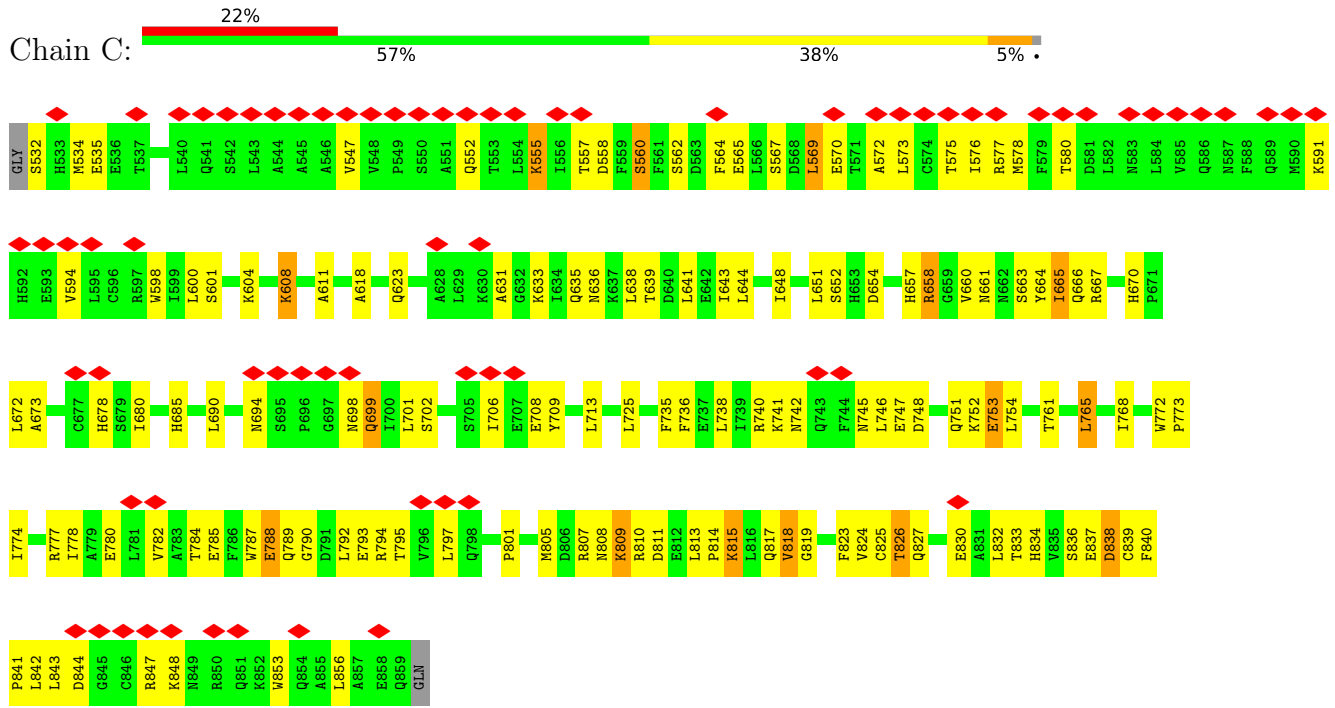
- Molecule 2: GafB domain of phosphodiesterase 2A



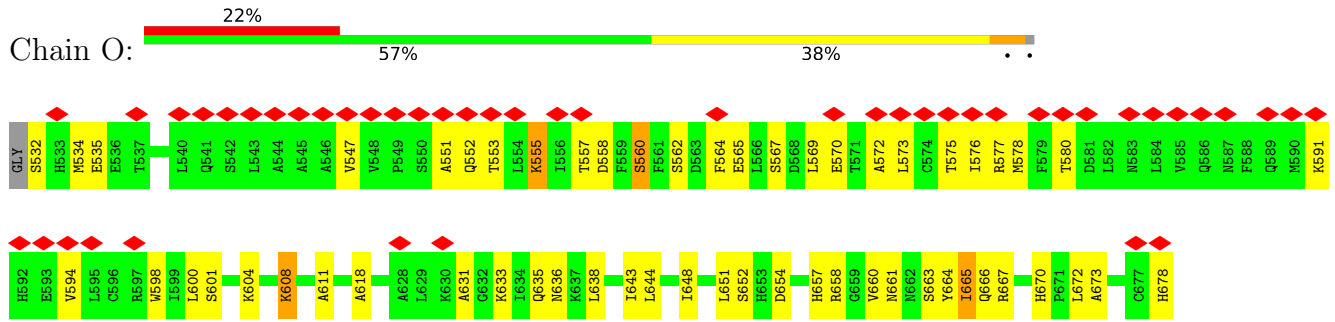
• Molecule 2: GafB domain of phosphodiesterase 2A

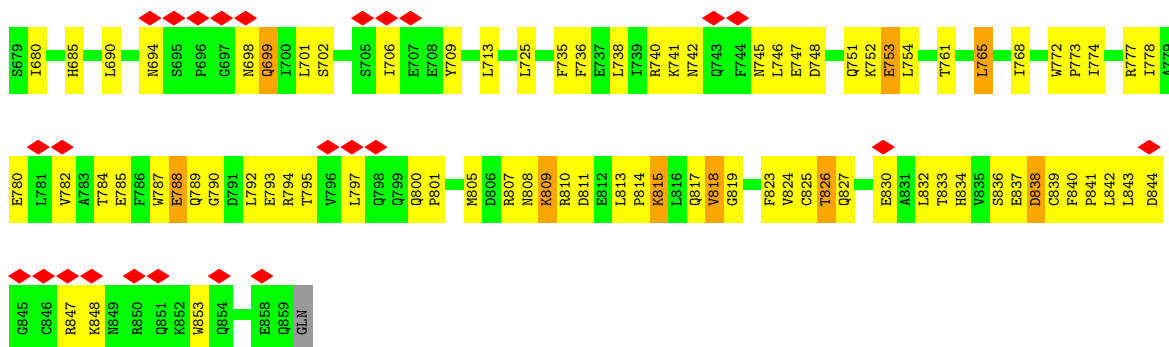


• Molecule 3: phosphodiesterase 5/6 chimera catalytic domain

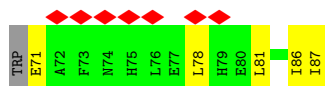
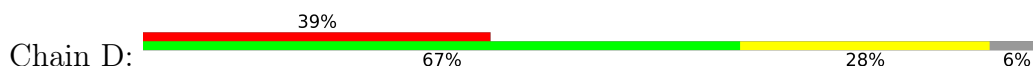


• Molecule 3: phosphodiesterase 5/6 chimera catalytic domain

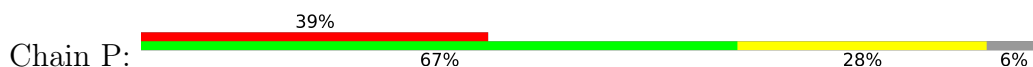




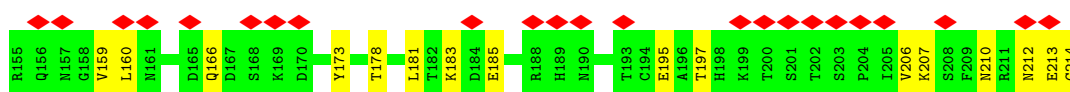
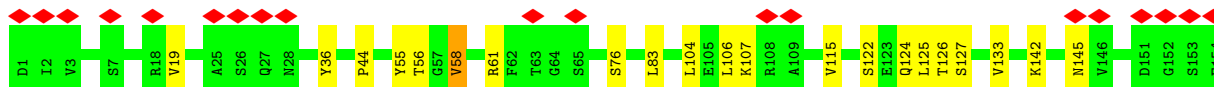
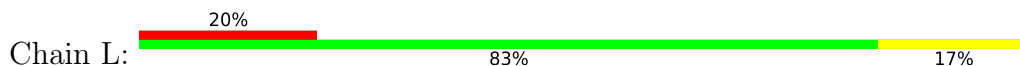
- Molecule 4: phosphodiesterase 6 gamma subunit inhibitory peptide



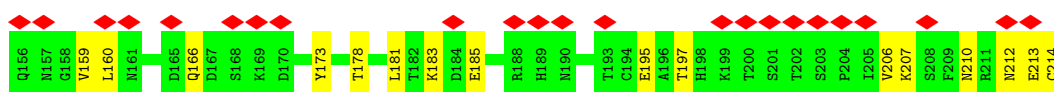
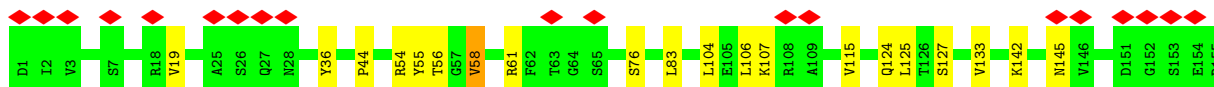
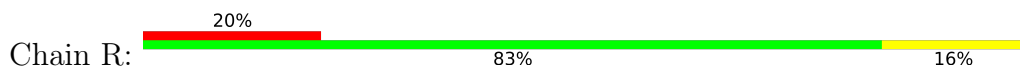
- Molecule 4: phosphodiesterase 6 gamma subunit inhibitory peptide



- Molecule 5: IgG1-kappa 2E8 light chain

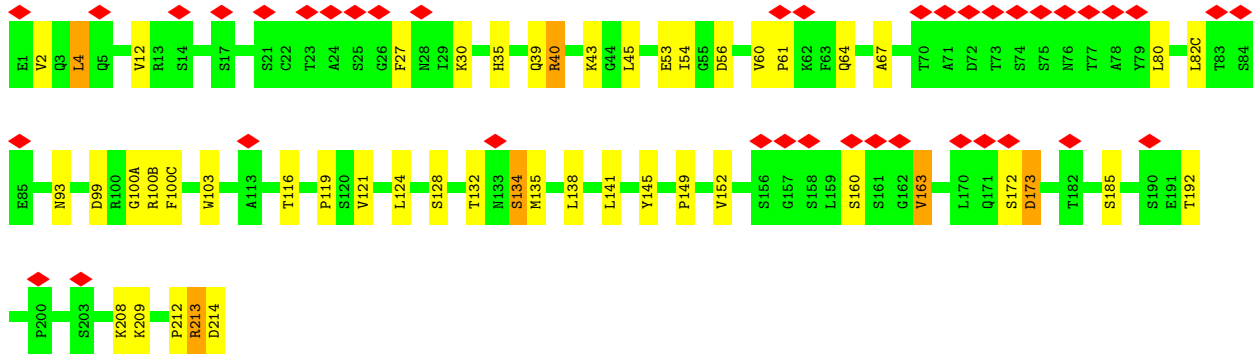
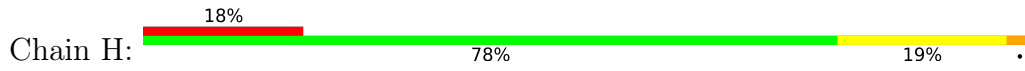


- Molecule 5: IgG1-kappa 2E8 light chain

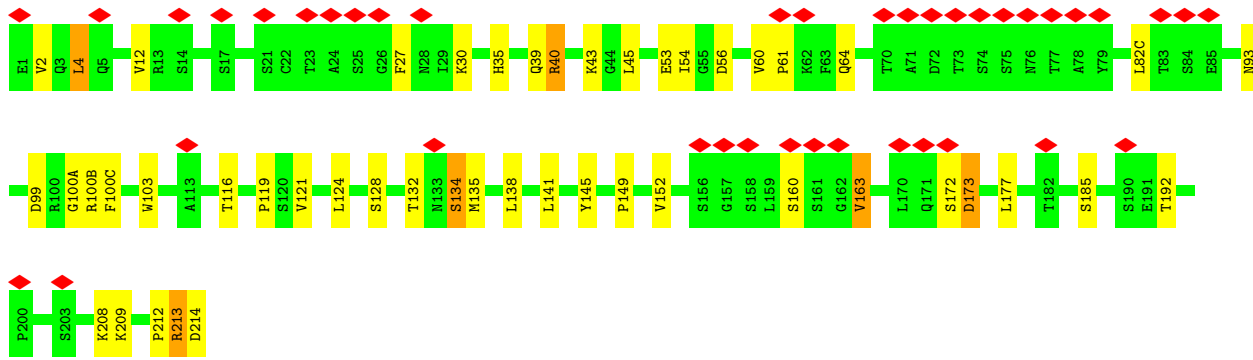
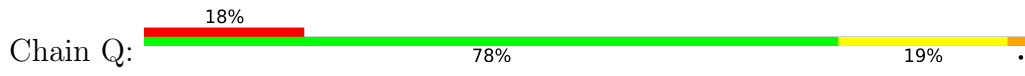


- Molecule 6: IgG1-kappa 2E8 heavy chain





• Molecule 6: IgG1-kappa 2E8 heavy chain



## 4 Experimental information

Property	Value	Source
EM reconstruction method	SINGLE PARTICLE	Depositor
Imposed symmetry	POINT, C2	Depositor
Number of particles used	12373	Depositor
Resolution determination method	FSC 0.143 CUT-OFF	Depositor
CTF correction method	EMAN ctfit	Depositor
Microscope	JEOL 2010F	Depositor
Voltage (kV)	200	Depositor
Electron dose ( $e^-/\text{\AA}^2$ )	15	Depositor
Minimum defocus (nm)	Not provided	
Maximum defocus (nm)	Not provided	
Magnification	60000	Depositor
Image detector	GATAN ULTRASCAN 4000 (4k x 4k)	Depositor
Maximum map value	1.835	Depositor
Minimum map value	-0.758	Depositor
Average map value	0.011	Depositor
Map value standard deviation	0.104	Depositor
Recommended contour level	1.0	Depositor
Map size ( $\text{\AA}$ )	434.4, 434.4, 434.4	wwPDB
Map dimensions	240, 240, 240	wwPDB
Map angles ( $^\circ$ )	90.0, 90.0, 90.0	wwPDB
Pixel spacing ( $\text{\AA}$ )	1.81, 1.81, 1.81	Depositor

## 5 Model quality [i](#)

### 5.1 Standard geometry [i](#)

Bond lengths and bond angles in the following residue types are not validated in this section: IBM

The Z score for a bond length (or angle) is the number of standard deviations the observed value is removed from the expected value. A bond length (or angle) with  $|Z| > 5$  is considered an outlier worth inspection. RMSZ is the root-mean-square of all Z scores of the bond lengths (or angles).

Mol	Chain	Bond lengths		Bond angles	
		RMSZ	# Z  >5	RMSZ	# Z  >5
1	A	0.47	0/1391	0.60	0/1877
1	M	0.47	0/1391	0.60	0/1877
2	B	0.65	0/1285	0.87	2/1738 (0.1%)
2	N	0.65	0/1285	0.87	2/1738 (0.1%)
3	C	0.39	0/2726	0.53	0/3685
3	O	0.39	0/2726	0.53	0/3685
4	D	0.35	0/144	0.60	0/194
4	P	0.35	0/144	0.60	0/194
5	L	0.53	0/1682	0.73	0/2278
5	R	0.53	0/1682	0.73	0/2278
6	H	0.50	0/1728	0.78	0/2366
6	Q	0.50	0/1728	0.78	0/2366
All	All	0.49	0/17912	0.69	4/24276 (0.0%)

There are no bond length outliers.

All (4) bond angle outliers are listed below:

Mol	Chain	Res	Type	Atoms	Z	Observed(°)	Ideal(°)
2	N	478	ILE	C-N-CD	-6.88	105.47	120.60
2	B	478	ILE	C-N-CD	-6.88	105.47	120.60
2	B	403	LEU	CA-CB-CG	5.56	128.08	115.30
2	N	403	LEU	CA-CB-CG	5.54	128.05	115.30

There are no chirality outliers.

There are no planarity outliers.

## 5.2 Too-close contacts [i](#)

In the following table, the Non-H and H(model) columns list the number of non-hydrogen atoms and hydrogen atoms in the chain respectively. The H(added) column lists the number of hydrogen atoms added and optimized by MolProbity. The Clashes column lists the number of clashes within the asymmetric unit, whereas Symm-Clashes lists symmetry-related clashes.

Mol	Chain	Non-H	H(model)	H(added)	Clashes	Symm-Clashes
1	A	1368	0	1390	273	0
1	M	1368	0	1393	275	0
2	B	1267	0	1270	276	0
2	N	1267	0	1272	305	0
3	C	2671	0	2668	252	0
3	O	2671	0	2668	246	0
4	D	141	0	131	7	0
4	P	141	0	131	7	0
5	L	1649	0	1578	15	0
5	R	1649	0	1578	15	0
6	H	1682	0	1625	57	0
6	Q	1682	0	1625	55	0
7	C	32	0	28	4	0
7	O	32	0	28	4	0
All	All	17620	0	17385	1227	0

The all-atom clashscore is defined as the number of clashes found per 1000 atoms (including hydrogen atoms). The all-atom clashscore for this structure is 35.

All (1227) close contacts within the same asymmetric unit are listed below, sorted by their clash magnitude.

Atom-1	Atom-2	Interatomic distance (Å)	Clash overlap (Å)
3:C:633:LYS:HB2	3:O:840:PHE:CE2	1.21	1.69
3:C:840:PHE:CE2	3:O:633:LYS:HB2	1.21	1.63
2:B:554:TYR:HE1	2:N:554:TYR:CE1	1.04	1.62
2:B:554:TYR:CE1	2:N:554:TYR:HE1	1.05	1.61
3:C:633:LYS:CB	3:O:840:PHE:HE2	1.10	1.60
3:C:840:PHE:HE2	3:O:633:LYS:CB	1.10	1.59
1:A:57:GLU:CB	1:M:118:THR:CG2	1.81	1.57
2:B:563:ARG:HB3	3:C:555:LYS:CE	1.18	1.57
3:O:794:ARG:HD2	6:Q:54:ILE:CG2	1.11	1.54
1:A:118:THR:CG2	1:M:57:GLU:CB	1.81	1.53
2:B:563:ARG:CB	3:C:555:LYS:NZ	1.72	1.52
3:C:794:ARG:HD2	6:H:54:ILE:CG2	1.11	1.52
2:N:563:ARG:HB3	3:O:555:LYS:CE	1.36	1.51

*Continued on next page...*

*Continued from previous page...*

Atom-1	Atom-2	Interatomic distance (Å)	Clash overlap (Å)
3:C:794:ARG:CD	6:H:54:ILE:HG21	1.40	1.51
1:A:120:THR:CA	1:M:61:ILE:N	1.72	1.51
2:B:563:ARG:CA	3:C:555:LYS:NZ	1.68	1.51
1:A:120:THR:HA	1:M:60:ASN:C	1.31	1.50
2:N:563:ARG:C	3:O:555:LYS:HD2	1.20	1.49
1:A:72:GLU:HB2	2:B:389:LEU:CD2	1.36	1.49
3:O:794:ARG:CD	6:Q:54:ILE:CG2	1.89	1.49
1:A:61:ILE:N	1:M:120:THR:CA	1.72	1.48
1:M:64:GLU:HA	2:B:387:GLN:NE2	1.21	1.48
1:A:60:ASN:C	1:M:120:THR:HA	1.31	1.48
3:C:794:ARG:CD	6:H:54:ILE:CG2	1.89	1.47
1:A:118:THR:HG23	1:M:57:GLU:CB	1.37	1.46
1:A:118:THR:CG2	1:M:57:GLU:HB3	1.01	1.46
1:A:57:GLU:CB	1:M:118:THR:HG23	1.37	1.45
1:A:57:GLU:HB3	1:M:118:THR:CG2	1.01	1.45
2:N:563:ARG:HA	3:O:555:LYS:NZ	1.13	1.45
2:N:563:ARG:CA	3:O:555:LYS:NZ	1.80	1.44
3:O:794:ARG:CD	6:Q:54:ILE:HG21	1.40	1.43
1:A:61:ILE:N	1:M:120:THR:HA	1.19	1.42
1:A:89:GLN:CB	1:M:89:GLN:CB	1.96	1.42
1:A:89:GLN:NE2	1:M:86:ARG:HD2	1.33	1.42
1:A:70:GLN:O	2:B:389:LEU:CD1	1.65	1.41
3:C:795:THR:CG2	6:H:53:GLU:OE2	1.68	1.41
1:A:120:THR:HA	1:M:61:ILE:N	1.19	1.40
1:A:86:ARG:HD2	1:M:89:GLN:NE2	1.33	1.39
1:A:61:ILE:CG1	1:M:119:PRO:C	1.92	1.38
3:O:795:THR:CG2	6:Q:53:GLU:OE2	1.68	1.38
1:M:78:LYS:NZ	2:N:388:LYS:NZ	1.69	1.37
1:A:120:THR:HB	1:M:60:ASN:N	1.03	1.36
1:M:78:LYS:HZ1	2:N:388:LYS:NZ	0.91	1.35
1:A:60:ASN:N	1:M:120:THR:HB	1.03	1.35
1:A:119:PRO:C	1:M:61:ILE:CG1	1.92	1.34
1:M:78:LYS:NZ	2:N:388:LYS:HZ3	1.18	1.34
2:N:563:ARG:O	3:O:555:LYS:CD	1.74	1.34
1:M:72:GLU:HB2	2:N:389:LEU:CD2	1.58	1.33
1:A:120:THR:CB	1:M:61:ILE:N	1.91	1.33
2:B:568:ASN:HD21	2:N:567:ALA:CB	1.41	1.33
1:A:64:GLU:HA	2:N:387:GLN:NE2	1.44	1.31
1:M:64:GLU:CA	2:B:387:GLN:HE22	1.42	1.31
1:M:70:GLN:O	2:N:389:LEU:CD1	1.77	1.31
2:B:568:ASN:ND2	2:N:567:ALA:HB3	1.44	1.31

*Continued on next page...*

*Continued from previous page...*

Atom-1	Atom-2	Interatomic distance (Å)	Clash overlap (Å)
1:A:89:GLN:CB	1:M:89:GLN:HB3	1.58	1.30
1:A:61:ILE:N	1:M:120:THR:CB	1.91	1.30
1:A:67:THR:CB	2:N:390:LYS:HE2	1.60	1.30
2:N:563:ARG:CB	3:O:555:LYS:CE	2.08	1.30
2:B:554:TYR:CE1	2:N:554:TYR:CE1	1.90	1.29
1:A:61:ILE:HG13	1:M:119:PRO:C	1.35	1.29
1:A:119:PRO:C	1:M:61:ILE:HG13	1.35	1.28
2:B:571:MET:O	3:O:631:ALA:HB2	1.14	1.28
1:A:60:ASN:N	1:M:120:THR:CB	1.96	1.28
1:A:120:THR:CB	1:M:60:ASN:N	1.96	1.28
1:A:60:ASN:HB2	1:M:120:THR:CA	1.29	1.27
3:O:794:ARG:NE	6:Q:54:ILE:HG21	1.47	1.27
3:C:794:ARG:NE	6:H:54:ILE:HG21	1.47	1.27
1:A:70:GLN:O	2:B:389:LEU:HD13	1.09	1.27
1:A:89:GLN:HB2	1:M:89:GLN:CB	1.59	1.26
1:A:120:THR:HG21	1:M:58:GLU:C	1.55	1.26
2:N:571:MET:O	3:C:631:ALA:HB2	1.22	1.26
1:A:61:ILE:N	1:M:120:THR:CG2	1.99	1.26
1:A:120:THR:CG2	1:M:61:ILE:N	1.99	1.26
2:N:563:ARG:CA	3:O:555:LYS:HZ3	1.35	1.26
2:B:567:ALA:CB	2:N:568:ASN:HD21	1.49	1.25
1:A:58:GLU:C	1:M:120:THR:HG21	1.55	1.25
1:A:89:GLN:HB3	1:M:89:GLN:CB	1.58	1.25
2:N:563:ARG:O	3:O:555:LYS:HD2	1.09	1.24
1:A:67:THR:HB	2:N:390:LYS:CE	1.67	1.23
1:A:120:THR:HB	1:M:60:ASN:CA	1.68	1.23
2:B:567:ALA:HB3	2:N:568:ASN:ND2	1.51	1.23
1:A:57:GLU:C	1:M:120:THR:OG1	1.70	1.23
1:A:120:THR:CA	1:M:60:ASN:C	2.00	1.23
1:A:58:GLU:CA	1:M:120:THR:HG21	1.66	1.22
1:A:120:THR:HG22	1:M:61:ILE:N	1.52	1.22
1:A:60:ASN:CA	1:M:120:THR:HB	1.68	1.21
1:A:89:GLN:CB	1:M:89:GLN:HB2	1.59	1.21
2:B:563:ARG:C	3:C:555:LYS:HD2	1.59	1.21
1:A:60:ASN:CA	1:M:120:THR:CA	2.19	1.21
1:A:120:THR:CA	1:M:60:ASN:CA	2.19	1.20
2:B:563:ARG:CB	3:C:555:LYS:CE	2.10	1.19
2:B:567:ALA:CB	3:C:558:ASP:OD2	1.89	1.19
1:A:120:THR:HG21	1:M:58:GLU:CA	1.66	1.18
1:A:120:THR:OG1	1:M:57:GLU:CA	1.92	1.18
1:A:120:THR:CA	1:M:60:ASN:HB2	1.29	1.18

*Continued on next page...*

*Continued from previous page...*

Atom-1	Atom-2	Interatomic distance (Å)	Clash overlap (Å)
3:C:837:GLU:N	3:O:833:THR:CG2	2.07	1.18
2:N:563:ARG:CB	3:O:555:LYS:HE2	1.70	1.17
3:C:840:PHE:CB	3:O:838:ASP:H	1.58	1.17
1:A:70:GLN:O	2:B:389:LEU:CG	1.89	1.17
1:A:89:GLN:HE22	1:M:86:ARG:CD	1.58	1.17
1:M:78:LYS:NZ	2:N:388:LYS:CE	2.07	1.16
3:C:795:THR:HG21	6:H:53:GLU:OE2	1.39	1.16
1:A:60:ASN:ND2	1:M:121:SER:HA	1.61	1.16
1:A:61:ILE:N	1:M:120:THR:HG22	1.52	1.16
2:B:568:ASN:ND2	2:N:567:ALA:CB	2.03	1.16
1:A:57:GLU:CA	1:M:120:THR:OG1	1.92	1.16
1:A:121:SER:HA	1:M:60:ASN:ND2	1.61	1.16
3:C:833:THR:CG2	3:O:837:GLU:N	2.07	1.15
1:A:86:ARG:CD	1:M:89:GLN:HE22	1.58	1.15
3:C:795:THR:CG2	6:H:53:GLU:CD	2.13	1.15
1:M:70:GLN:O	2:N:389:LEU:HD13	0.98	1.15
3:C:795:THR:HG22	6:H:53:GLU:CG	1.76	1.15
3:C:838:ASP:H	3:O:840:PHE:CB	1.58	1.15
3:O:795:THR:CG2	6:Q:53:GLU:CD	2.13	1.15
3:O:795:THR:HG22	6:Q:53:GLU:CG	1.76	1.15
1:A:57:GLU:HB2	1:M:118:THR:HG23	1.29	1.14
1:A:120:THR:CB	1:M:60:ASN:CA	2.26	1.13
2:N:563:ARG:CB	3:O:555:LYS:HZ3	1.60	1.13
2:N:569:GLU:CG	3:C:552:GLN:HB2	1.78	1.13
3:C:633:LYS:CB	3:O:840:PHE:CE2	1.97	1.13
3:O:795:THR:HG22	6:Q:53:GLU:HG3	1.18	1.13
1:A:60:ASN:CA	1:M:120:THR:CB	2.26	1.13
1:A:70:GLN:HG3	2:B:388:LYS:O	1.41	1.13
3:C:795:THR:HG22	6:H:53:GLU:HG3	1.18	1.13
3:O:795:THR:CG2	6:Q:53:GLU:CG	2.26	1.13
3:O:795:THR:HG23	6:Q:53:GLU:OE2	1.36	1.13
1:A:120:THR:N	1:M:61:ILE:HG13	1.62	1.13
2:N:499:THR:HG22	2:N:500:ARG:H	1.11	1.12
2:N:567:ALA:HA	3:O:558:ASP:OD2	1.44	1.12
3:C:840:PHE:CE2	3:O:633:LYS:CB	1.97	1.12
3:C:795:THR:CG2	6:H:53:GLU:CG	2.26	1.12
1:A:72:GLU:CB	2:B:389:LEU:CD2	2.28	1.11
2:B:563:ARG:HA	3:C:555:LYS:NZ	1.38	1.11
1:A:61:ILE:HG13	1:M:120:THR:N	1.62	1.11
2:B:568:ASN:HD21	2:N:567:ALA:HB1	1.14	1.11
2:B:567:ALA:HB1	3:C:558:ASP:OD2	1.45	1.11

*Continued on next page...*

*Continued from previous page...*

Atom-1	Atom-2	Interatomic distance (Å)	Clash overlap (Å)
2:N:571:MET:O	3:C:631:ALA:CB	1.97	1.11
1:A:61:ILE:HA	1:M:119:PRO:O	1.50	1.10
2:B:460:PRO:HG2	2:B:463:GLN:HB3	1.30	1.09
2:B:569:GLU:CG	3:O:552:GLN:HB2	1.81	1.09
1:A:69:ILE:CG2	2:B:389:LEU:HD12	1.81	1.09
1:M:73:ALA:HB1	1:M:74:GLY:HA3	1.27	1.09
2:N:563:ARG:C	3:O:555:LYS:CD	2.15	1.09
2:B:568:ASN:CB	2:N:568:ASN:HB2	1.82	1.08
2:B:568:ASN:HB2	2:N:568:ASN:CB	1.83	1.08
3:C:795:THR:HG23	6:H:53:GLU:OE2	1.36	1.08
1:A:60:ASN:C	1:M:120:THR:CA	2.00	1.08
1:A:73:ALA:HB1	1:A:74:GLY:HA3	1.27	1.08
1:A:119:PRO:O	1:M:61:ILE:HA	1.50	1.08
3:C:795:THR:HG21	6:H:53:GLU:CD	1.71	1.08
3:O:795:THR:HG21	6:Q:53:GLU:OE2	1.39	1.08
2:B:567:ALA:CB	2:N:568:ASN:ND2	2.09	1.08
1:A:120:THR:OG1	1:M:57:GLU:HA	1.52	1.08
2:B:499:THR:HG22	2:B:500:ARG:H	1.11	1.07
1:A:120:THR:OG1	1:M:57:GLU:C	1.70	1.07
2:B:569:GLU:HG2	3:O:552:GLN:HB2	1.30	1.07
3:C:833:THR:HG21	3:O:837:GLU:H	1.19	1.07
2:B:563:ARG:O	3:C:555:LYS:HD2	1.54	1.06
2:B:567:ALA:HB1	2:N:568:ASN:HD21	1.17	1.06
3:C:840:PHE:CD2	3:O:633:LYS:HB2	1.91	1.06
1:A:118:THR:HG23	1:M:57:GLU:HB2	1.29	1.06
3:O:795:THR:HG21	6:Q:53:GLU:CD	1.71	1.05
3:C:633:LYS:HB2	3:O:840:PHE:CD2	1.91	1.05
1:A:57:GLU:HA	1:M:120:THR:OG1	1.52	1.04
2:N:563:ARG:O	3:O:555:LYS:CG	2.04	1.04
2:N:567:ALA:CA	3:O:558:ASP:OD2	2.05	1.04
3:C:837:GLU:H	3:O:833:THR:HG21	1.19	1.04
3:C:840:PHE:HE2	3:O:633:LYS:HB3	1.20	1.04
1:M:72:GLU:OE1	2:N:389:LEU:HD23	1.56	1.04
2:N:460:PRO:HG2	2:N:463:GLN:HB3	1.30	1.04
1:A:69:ILE:HG22	2:B:389:LEU:HD12	1.39	1.03
2:B:571:MET:O	3:O:631:ALA:CB	2.04	1.03
1:A:72:GLU:CB	2:B:389:LEU:HD21	1.89	1.02
2:N:567:ALA:CB	3:O:558:ASP:OD2	2.08	1.02
3:C:633:LYS:HB3	3:O:840:PHE:HE2	1.20	1.02
1:M:72:GLU:HB2	2:N:389:LEU:HD21	1.03	1.02
1:A:70:GLN:O	2:B:389:LEU:CD2	2.07	1.02

*Continued on next page...*



Continued from previous page...

Atom-1	Atom-2	Interatomic distance (Å)	Clash overlap (Å)
2:B:570:MET:HG2	3:C:560:SER:OG	1.55	1.02
2:N:563:ARG:HB3	3:O:555:LYS:CD	1.88	1.01
3:C:794:ARG:HD2	6:H:54:ILE:HG22	1.03	1.01
1:A:60:ASN:HB2	1:M:120:THR:CB	1.90	1.00
3:O:794:ARG:HD2	6:Q:54:ILE:HG22	1.03	1.00
1:A:120:THR:HG22	1:M:61:ILE:CA	1.91	1.00
1:M:78:LYS:HZ3	2:N:388:LYS:CE	1.70	1.00
3:C:840:PHE:HB3	3:O:838:ASP:H	1.11	1.00
4:D:86:ILE:O	4:D:87:ILE:HG12	1.62	1.00
3:C:838:ASP:N	3:O:840:PHE:HB3	1.76	0.99
1:A:120:THR:CB	1:M:60:ASN:HB2	1.90	0.99
1:A:61:ILE:CA	1:M:120:THR:HG22	1.91	0.99
2:B:563:ARG:O	3:C:555:LYS:CD	2.11	0.98
3:C:840:PHE:HB3	3:O:838:ASP:N	1.76	0.98
1:A:60:ASN:H	1:M:120:THR:CB	1.67	0.98
1:A:57:GLU:CB	1:M:118:THR:HG21	1.64	0.97
1:A:86:ARG:CD	1:M:89:GLN:NE2	2.20	0.97
1:A:89:GLN:HB3	1:M:89:GLN:HB2	0.98	0.97
2:B:563:ARG:CA	3:C:555:LYS:HZ2	1.68	0.97
3:C:633:LYS:HD3	3:O:844:ASP:OD1	1.64	0.97
4:P:86:ILE:O	4:P:87:ILE:HG12	1.62	0.97
1:M:72:GLU:CB	2:N:389:LEU:CD2	2.42	0.97
3:C:794:ARG:HD2	6:H:54:ILE:CB	1.95	0.97
3:O:794:ARG:HD2	6:Q:54:ILE:CB	1.95	0.97
2:B:563:ARG:HB3	3:C:555:LYS:NZ	1.47	0.96
3:C:844:ASP:OD1	3:O:633:LYS:HD3	1.64	0.96
1:A:60:ASN:CB	1:M:120:THR:CA	1.86	0.95
1:M:72:GLU:CB	2:N:389:LEU:HD21	1.96	0.95
1:A:89:GLN:HB2	1:M:89:GLN:HB3	0.98	0.94
2:B:563:ARG:HB3	3:C:555:LYS:HE2	0.97	0.94
1:A:64:GLU:HA	2:N:387:GLN:HE22	1.15	0.94
1:A:61:ILE:HG12	1:M:119:PRO:C	1.78	0.94
1:A:60:ASN:CB	1:M:120:THR:CB	2.45	0.94
1:A:61:ILE:HB	1:M:120:THR:HG22	1.49	0.94
1:A:120:THR:CB	1:M:60:ASN:H	1.67	0.94
1:A:120:THR:CG2	1:M:61:ILE:HB	1.97	0.94
3:C:794:ARG:CD	6:H:54:ILE:HG22	1.71	0.94
1:A:120:THR:HG22	1:M:61:ILE:HB	1.49	0.94
1:M:73:ALA:CB	1:M:74:GLY:HA3	1.96	0.94
3:O:794:ARG:CD	6:Q:54:ILE:HG22	1.71	0.94
1:A:67:THR:CG2	2:N:387:GLN:HE21	1.81	0.94

Continued on next page...

*Continued from previous page...*

Atom-1	Atom-2	Interatomic distance (Å)	Clash overlap (Å)
2:N:569:GLU:HG3	3:C:552:GLN:HB2	1.48	0.94
1:A:72:GLU:HB2	2:B:389:LEU:HD21	0.95	0.93
1:A:61:ILE:CB	1:M:120:THR:HG22	1.98	0.93
1:A:61:ILE:HB	1:M:120:THR:CG2	1.97	0.93
2:B:563:ARG:CB	3:C:555:LYS:HE2	1.87	0.93
2:B:568:ASN:HB2	2:N:568:ASN:HB2	0.93	0.93
3:C:740:ARG:O	3:O:742:ASN:HB2	1.69	0.93
3:C:837:GLU:H	3:O:833:THR:CG2	1.74	0.93
1:A:73:ALA:CB	1:A:74:GLY:HA3	1.96	0.93
3:C:742:ASN:HB2	3:O:740:ARG:O	1.69	0.93
3:O:795:THR:CG2	6:Q:53:GLU:HG3	1.94	0.92
1:A:70:GLN:O	2:B:389:LEU:HD22	1.68	0.92
1:M:67:THR:HB	2:B:390:LYS:HE2	1.52	0.92
1:A:89:GLN:NE2	1:M:86:ARG:CD	2.20	0.91
2:N:563:ARG:CB	3:O:555:LYS:NZ	2.13	0.91
1:A:120:THR:HG22	1:M:61:ILE:CB	1.98	0.91
2:B:570:MET:CG	3:C:560:SER:OG	2.13	0.91
3:C:795:THR:CG2	6:H:53:GLU:HG3	1.94	0.91
1:A:119:PRO:C	1:M:61:ILE:HG12	1.78	0.90
1:A:142:ILE:HD13	1:A:155:ILE:HD13	1.54	0.90
1:M:70:GLN:C	2:N:389:LEU:HD13	1.89	0.90
1:A:120:THR:CB	1:M:60:ASN:CB	2.45	0.90
3:O:808:ASN:ND2	6:Q:56:ASP:OD2	2.04	0.90
3:C:808:ASN:ND2	6:H:56:ASP:OD2	2.04	0.90
3:C:838:ASP:N	3:O:840:PHE:CB	2.34	0.90
2:N:563:ARG:HB3	3:O:555:LYS:HE2	0.91	0.90
3:O:794:ARG:CG	6:Q:54:ILE:HG22	2.01	0.89
1:M:64:GLU:CA	2:B:387:GLN:NE2	2.16	0.89
1:M:78:LYS:CE	2:N:388:LYS:HE2	2.02	0.89
1:A:118:THR:HG21	1:M:57:GLU:CB	1.64	0.89
3:C:840:PHE:CB	3:O:838:ASP:N	2.34	0.89
1:M:142:ILE:HD13	1:M:155:ILE:HD13	1.54	0.88
3:C:838:ASP:H	3:O:840:PHE:HB3	1.11	0.88
3:C:794:ARG:CG	6:H:54:ILE:HG22	2.01	0.88
2:N:460:PRO:HG2	2:N:463:GLN:CB	2.04	0.88
1:A:58:GLU:HA	1:M:120:THR:HG21	1.55	0.88
1:A:67:THR:HB	2:N:390:LYS:HE2	0.88	0.88
1:A:57:GLU:HB3	1:M:118:THR:HG21	0.88	0.87
1:M:78:LYS:HE2	2:N:388:LYS:HE2	1.53	0.87
2:N:567:ALA:HB2	3:O:555:LYS:HG3	1.54	0.87
1:A:64:GLU:CA	2:N:387:GLN:HE22	1.87	0.87

*Continued on next page...*

*Continued from previous page...*

Atom-1	Atom-2	Interatomic distance (Å)	Clash overlap (Å)
2:N:563:ARG:CA	3:O:555:LYS:CE	2.49	0.86
1:A:120:THR:CG2	1:M:58:GLU:C	2.42	0.86
1:A:60:ASN:H	1:M:120:THR:HB	1.03	0.86
2:B:460:PRO:HG2	2:B:463:GLN:CB	2.04	0.86
1:A:118:THR:HG21	1:M:57:GLU:HB3	0.88	0.86
1:A:120:THR:HG21	1:M:58:GLU:HA	1.55	0.86
1:A:118:THR:HG23	1:M:57:GLU:HB3	0.94	0.85
1:A:120:THR:CG2	1:M:61:ILE:CB	2.55	0.85
1:A:73:ALA:CB	1:A:74:GLY:CA	2.54	0.85
1:A:121:SER:CA	1:M:60:ASN:ND2	2.40	0.85
1:M:67:THR:CB	2:B:390:LYS:HE2	2.08	0.84
1:M:73:ALA:CB	1:M:74:GLY:CA	2.54	0.84
1:M:78:LYS:NZ	2:N:388:LYS:HE2	1.92	0.84
1:A:69:ILE:HG23	2:B:389:LEU:HD12	1.57	0.84
2:N:563:ARG:CA	3:O:555:LYS:HD2	2.07	0.84
1:A:58:GLU:C	1:M:120:THR:CG2	2.42	0.84
6:Q:39:GLN:HB2	6:Q:45:LEU:HD23	1.58	0.84
1:A:60:ASN:ND2	1:M:121:SER:CA	2.40	0.84
1:A:119:PRO:O	1:M:61:ILE:CA	2.26	0.84
1:A:61:ILE:CB	1:M:120:THR:CG2	2.55	0.84
2:N:499:THR:CG2	2:N:500:ARG:H	1.90	0.84
6:H:39:GLN:HB2	6:H:45:LEU:HD23	1.58	0.84
1:A:89:GLN:O	1:M:90:LEU:CA	2.26	0.83
2:B:563:ARG:C	3:C:555:LYS:CD	2.43	0.83
2:N:567:ALA:HB2	3:O:555:LYS:CG	2.08	0.83
2:N:499:THR:HG22	2:N:500:ARG:N	1.93	0.83
1:A:89:GLN:HA	1:M:90:LEU:HD23	1.60	0.83
1:A:90:LEU:HD23	1:M:89:GLN:HA	1.60	0.83
2:B:499:THR:HG22	2:B:500:ARG:N	1.93	0.83
1:A:61:ILE:CA	1:M:119:PRO:O	2.26	0.83
3:C:636:ASN:ND2	3:O:844:ASP:OD2	2.12	0.83
1:A:120:THR:HB	1:M:60:ASN:H	1.03	0.82
2:B:499:THR:CG2	2:B:500:ARG:H	1.90	0.82
3:C:838:ASP:H	3:O:840:PHE:HB2	1.43	0.82
1:A:89:GLN:O	1:M:90:LEU:HA	1.80	0.82
3:C:844:ASP:OD2	3:O:636:ASN:ND2	2.12	0.82
1:A:90:LEU:HA	1:M:89:GLN:O	1.80	0.82
2:N:507:ILE:HG22	2:N:515:ILE:HG22	1.61	0.82
1:M:67:THR:HB	2:B:390:LYS:CE	2.10	0.82
1:A:57:GLU:CA	1:M:118:THR:CG2	2.58	0.82
1:A:64:GLU:HG2	2:N:387:GLN:HB2	1.62	0.82

*Continued on next page...*

*Continued from previous page...*

Atom-1	Atom-2	Interatomic distance (Å)	Clash overlap (Å)
3:C:840:PHE:HB2	3:O:838:ASP:H	1.43	0.82
1:A:61:ILE:CG1	1:M:119:PRO:O	2.27	0.81
1:A:72:GLU:HB2	2:B:389:LEU:HD22	1.56	0.81
3:C:532:SER:HA	3:C:535:GLU:OE1	1.80	0.81
1:A:119:PRO:O	1:M:61:ILE:CG1	2.27	0.81
1:A:142:ILE:HG21	1:A:179:MET:HE1	1.63	0.81
1:A:118:THR:HG21	1:M:57:GLU:CA	2.10	0.81
2:B:432:VAL:HG12	2:B:518:ALA:HB2	1.62	0.81
1:A:86:ARG:HD2	1:M:89:GLN:HE22	0.99	0.81
2:N:432:VAL:HG12	2:N:518:ALA:HB2	1.62	0.81
1:A:57:GLU:CA	1:M:118:THR:HG21	2.10	0.81
2:B:507:ILE:HG22	2:B:515:ILE:HG22	1.61	0.81
2:N:563:ARG:CG	3:O:555:LYS:HZ3	1.93	0.81
2:N:569:GLU:HG2	3:C:552:GLN:HB2	1.62	0.81
3:C:833:THR:CG2	3:O:837:GLU:H	1.74	0.81
1:A:69:ILE:HG22	2:B:389:LEU:CD1	2.11	0.81
1:A:121:SER:HA	1:M:60:ASN:CG	2.01	0.81
1:M:69:ILE:CG2	2:N:389:LEU:HD12	2.11	0.81
2:B:563:ARG:HA	3:C:555:LYS:HZ2	1.25	0.80
1:A:90:LEU:CA	1:M:89:GLN:O	2.26	0.80
2:N:563:ARG:HA	3:O:555:LYS:HZ2	0.98	0.80
1:M:72:GLU:HB2	2:N:389:LEU:HD22	1.61	0.80
3:C:794:ARG:HD2	6:H:54:ILE:HG21	1.07	0.80
1:A:118:THR:CG2	1:M:57:GLU:CA	2.58	0.80
3:O:809:LYS:HA	3:O:809:LYS:HE3	1.63	0.80
1:A:75:SER:HB3	2:B:389:LEU:HD11	1.63	0.80
1:A:86:ARG:NH2	1:M:86:ARG:NH2	2.29	0.80
3:C:838:ASP:HA	3:O:838:ASP:HA	1.62	0.80
3:O:532:SER:HA	3:O:535:GLU:OE1	1.80	0.80
1:M:142:ILE:HG21	1:M:179:MET:HE1	1.61	0.80
2:B:563:ARG:HB3	3:C:555:LYS:CD	2.09	0.79
1:A:89:GLN:HE22	1:M:86:ARG:HD2	0.99	0.79
3:C:809:LYS:HE3	3:C:809:LYS:HA	1.63	0.79
1:A:142:ILE:HG21	1:A:179:MET:CE	2.13	0.79
2:B:396:LEU:HA	2:B:399:VAL:HG13	1.65	0.79
2:B:569:GLU:HG2	3:O:552:GLN:CB	2.11	0.79
2:N:396:LEU:HA	2:N:399:VAL:HG13	1.65	0.79
1:A:64:GLU:CA	2:N:387:GLN:NE2	2.37	0.78
2:B:554:TYR:CE1	2:N:554:TYR:CD1	2.71	0.78
3:C:735:PHE:HB2	3:C:754:LEU:HD21	1.64	0.78
2:B:399:VAL:HG21	2:B:540:PHE:HE1	1.48	0.78

*Continued on next page...*

*Continued from previous page...*

Atom-1	Atom-2	Interatomic distance (Å)	Clash overlap (Å)
3:O:735:PHE:HB2	3:O:754:LEU:HD21	1.64	0.78
3:O:761:THR:O	3:O:765:LEU:HD22	1.84	0.78
1:A:58:GLU:CA	1:M:120:THR:CG2	2.58	0.78
1:A:120:THR:CB	1:M:60:ASN:C	2.43	0.77
1:A:120:THR:HG21	1:M:58:GLU:O	1.84	0.77
3:C:795:THR:HB	6:H:30:LYS:NZ	1.99	0.77
3:O:794:ARG:CG	6:Q:54:ILE:CG2	2.60	0.77
3:O:795:THR:HB	6:Q:30:LYS:NZ	1.99	0.77
1:A:60:ASN:CG	1:M:121:SER:HA	2.01	0.77
1:M:142:ILE:HG21	1:M:179:MET:CE	2.13	0.77
1:A:73:ALA:HB1	1:A:74:GLY:CA	2.10	0.77
2:N:479:PRO:HG3	2:N:528:TRP:CZ3	2.19	0.77
2:B:563:ARG:O	3:C:555:LYS:CG	2.32	0.77
1:A:70:GLN:C	2:B:389:LEU:HD22	2.04	0.77
1:A:119:PRO:HG2	1:M:90:LEU:HD21	1.66	0.77
2:N:399:VAL:HG21	2:N:540:PHE:HE1	1.48	0.77
1:M:69:ILE:HG23	2:N:389:LEU:HD12	1.67	0.77
2:B:567:ALA:HB2	3:C:555:LYS:CG	2.14	0.77
3:O:794:ARG:CZ	6:Q:54:ILE:HD13	2.14	0.77
3:C:794:ARG:CZ	6:H:54:ILE:HD13	2.14	0.77
3:C:761:THR:O	3:C:765:LEU:HD22	1.84	0.77
2:B:479:PRO:HG3	2:B:528:TRP:CZ3	2.19	0.76
1:A:57:GLU:HB3	1:M:118:THR:HG23	0.94	0.76
1:A:120:THR:CG2	1:M:58:GLU:CA	2.58	0.76
1:A:58:GLU:O	1:M:120:THR:HG21	1.84	0.76
2:B:563:ARG:C	3:C:555:LYS:NZ	2.38	0.76
2:N:508:LYS:HA	2:N:513:GLU:O	1.86	0.76
3:C:794:ARG:CG	6:H:54:ILE:CG2	2.60	0.76
2:B:508:LYS:HA	2:B:513:GLU:O	1.86	0.76
1:M:73:ALA:HB1	1:M:74:GLY:CA	2.10	0.76
2:B:561:GLN:HE21	2:B:561:GLN:HA	1.51	0.76
3:O:611:ALA:HB3	3:O:785:GLU:HB2	1.68	0.76
1:A:70:GLN:HB2	2:B:389:LEU:CD2	2.06	0.75
1:A:59:CYS:C	1:M:120:THR:HB	2.04	0.75
2:B:500:ARG:HG2	2:B:522:ASN:OD1	1.87	0.75
1:M:142:ILE:CG2	1:M:179:MET:HE1	2.17	0.75
3:C:611:ALA:HB3	3:C:785:GLU:HB2	1.68	0.75
1:A:184:ILE:HD13	1:A:224:LEU:HD12	1.68	0.75
2:N:500:ARG:HG2	2:N:522:ASN:OD1	1.87	0.75
2:B:563:ARG:CG	3:C:555:LYS:NZ	2.49	0.74
1:A:90:LEU:HD21	1:M:119:PRO:HG2	1.66	0.74

*Continued on next page...*

*Continued from previous page...*

Atom-1	Atom-2	Interatomic distance (Å)	Clash overlap (Å)
1:A:119:PRO:O	1:M:61:ILE:HG12	1.86	0.74
3:O:736:PHE:CE1	3:O:827:GLN:HG3	2.22	0.74
1:M:184:ILE:HD13	1:M:224:LEU:HD12	1.68	0.74
1:A:60:ASN:C	1:M:120:THR:CB	2.43	0.74
1:A:61:ILE:HG12	1:M:119:PRO:O	1.86	0.74
3:C:608:LYS:CD	3:C:608:LYS:H	2.01	0.74
1:A:120:THR:HB	1:M:59:CYS:C	2.04	0.74
1:A:120:THR:HG1	1:M:57:GLU:C	1.90	0.74
2:B:570:MET:HG2	3:C:560:SER:HG	1.53	0.74
3:C:736:PHE:CE1	3:C:827:GLN:HG3	2.22	0.74
5:R:55:TYR:O	5:R:58:VAL:HG13	1.88	0.73
1:A:70:GLN:C	2:B:389:LEU:HD13	2.06	0.73
2:B:568:ASN:CG	2:N:567:ALA:HB3	2.08	0.73
2:N:561:GLN:HA	2:N:561:GLN:HE21	1.51	0.73
5:L:55:TYR:O	5:L:58:VAL:HG13	1.88	0.73
1:M:70:GLN:OE1	2:N:393:CYS:SG	2.46	0.73
2:N:563:ARG:CA	3:O:555:LYS:CD	2.67	0.73
2:N:570:MET:HE1	3:O:560:SER:C	1.79	0.73
3:C:780:GLU:O	3:C:784:THR:HG23	1.89	0.73
3:O:608:LYS:CD	3:O:608:LYS:H	2.01	0.73
2:N:569:GLU:HG2	3:C:552:GLN:CB	2.18	0.73
1:M:70:GLN:O	2:N:389:LEU:CG	2.36	0.73
1:M:213:PHE:O	1:M:217:LEU:HD12	1.89	0.73
2:B:443:LYS:HD2	2:B:456:GLU:CB	2.19	0.73
2:N:440:LEU:HG	2:N:461:ALA:HA	1.71	0.73
2:B:567:ALA:CA	3:C:558:ASP:OD2	2.38	0.72
2:B:554:TYR:CD1	2:N:554:TYR:CE1	2.72	0.72
6:Q:2:VAL:HG13	6:Q:27:PHE:CD1	2.24	0.72
6:H:2:VAL:HG13	6:H:27:PHE:CD1	2.24	0.72
2:B:569:GLU:HG3	3:O:552:GLN:HB2	1.72	0.72
2:N:562:TYR:CZ	2:N:566:LEU:HD21	2.25	0.72
2:N:443:LYS:HD2	2:N:456:GLU:CB	2.19	0.72
2:N:569:GLU:CG	3:C:552:GLN:CB	2.63	0.72
3:C:844:ASP:CB	3:O:633:LYS:HD3	2.20	0.72
2:N:563:ARG:CB	3:O:555:LYS:CD	2.59	0.72
1:A:67:THR:CG2	2:N:387:GLN:NE2	2.52	0.71
3:O:738:LEU:HD13	3:O:751:GLN:HE21	1.55	0.71
2:N:567:ALA:CB	3:O:555:LYS:HG3	2.21	0.71
2:B:468:HIS:O	2:B:472:THR:HG23	1.90	0.71
3:O:780:GLU:O	3:O:784:THR:HG23	1.89	0.71
1:A:121:SER:N	1:M:60:ASN:HB3	1.48	0.71

*Continued on next page...*

*Continued from previous page...*

Atom-1	Atom-2	Interatomic distance (Å)	Clash overlap (Å)
2:B:562:TYR:CZ	2:B:566:LEU:HD21	2.25	0.71
3:C:633:LYS:HD3	3:O:844:ASP:CB	2.20	0.71
3:C:813:LEU:HB3	3:C:814:PRO:HD3	1.72	0.71
2:N:468:HIS:O	2:N:472:THR:HG23	1.90	0.71
2:B:440:LEU:HG	2:B:461:ALA:HA	1.71	0.71
1:A:61:ILE:CA	1:M:120:THR:HA	2.20	0.71
1:A:67:THR:CB	2:N:390:LYS:CE	2.46	0.71
3:C:837:GLU:N	3:O:833:THR:HG21	1.85	0.71
2:N:563:ARG:CG	3:O:555:LYS:HE2	2.21	0.71
2:B:567:ALA:HB3	2:N:568:ASN:CG	2.11	0.70
1:A:213:PHE:O	1:A:217:LEU:HD12	1.89	0.70
2:B:561:GLN:O	2:N:561:GLN:OE1	2.07	0.70
3:C:738:LEU:HD13	3:C:751:GLN:HE21	1.55	0.70
3:O:813:LEU:HB3	3:O:814:PRO:HD3	1.72	0.70
1:M:78:LYS:CE	2:N:388:LYS:HZ3	2.04	0.70
1:A:142:ILE:CG2	1:A:179:MET:HE1	2.21	0.69
2:B:433:PHE:CD2	2:B:442:ALA:HB2	2.27	0.69
1:A:119:PRO:HD2	1:M:57:GLU:HB2	1.75	0.69
2:B:563:ARG:C	3:C:555:LYS:HZ2	1.96	0.69
3:O:748:ASP:HB3	3:O:751:GLN:HB2	1.74	0.69
2:N:433:PHE:CD2	2:N:442:ALA:HB2	2.27	0.69
3:O:567:SER:OG	3:O:570:GLU:HG3	1.93	0.69
3:C:567:SER:OG	3:C:570:GLU:HG3	1.93	0.69
1:A:57:GLU:HB2	1:M:119:PRO:HD2	1.75	0.68
2:B:461:ALA:O	2:B:467:GLY:HA2	1.94	0.68
2:B:443:LYS:HD2	2:B:456:GLU:CG	2.23	0.68
3:C:838:ASP:HA	3:O:838:ASP:CA	2.23	0.68
3:C:838:ASP:CA	3:O:838:ASP:HA	2.23	0.68
2:N:443:LYS:HD2	2:N:456:GLU:CG	2.24	0.68
2:N:461:ALA:O	2:N:467:GLY:HA2	1.94	0.68
1:A:72:GLU:HB2	2:B:389:LEU:HD23	1.64	0.68
2:B:523:LYS:NZ	2:B:533:ASP:OD2	2.26	0.68
2:N:523:LYS:NZ	2:N:533:ASP:OD2	2.26	0.68
1:M:70:GLN:HG3	2:N:388:LYS:O	1.90	0.68
3:C:840:PHE:CE2	3:O:633:LYS:HB3	2.05	0.68
1:A:73:ALA:HB3	1:A:74:GLY:C	2.15	0.68
2:N:399:VAL:HG21	2:N:540:PHE:CE1	2.29	0.68
1:M:73:ALA:HB3	1:M:74:GLY:C	2.15	0.67
2:B:399:VAL:HG21	2:B:540:PHE:CE1	2.29	0.67
3:C:748:ASP:HB3	3:C:751:GLN:HB2	1.74	0.67
2:B:507:ILE:CG2	2:B:515:ILE:HG22	2.24	0.67

*Continued on next page...*

*Continued from previous page...*

Atom-1	Atom-2	Interatomic distance (Å)	Clash overlap (Å)
1:A:120:THR:HA	1:M:61:ILE:CA	2.20	0.67
1:M:64:GLU:HG2	2:B:387:GLN:CD	2.15	0.67
2:N:507:ILE:CG2	2:N:515:ILE:HG22	2.24	0.67
3:C:787:TRP:CD1	3:C:807:ARG:HA	2.30	0.67
2:B:479:PRO:HG3	2:B:528:TRP:HZ3	1.58	0.67
2:N:479:PRO:HG3	2:N:528:TRP:HZ3	1.58	0.67
2:B:439:GLU:HB2	2:B:459:ILE:O	1.95	0.66
2:B:530:SER:O	2:B:533:ASP:N	2.28	0.66
2:B:418:ILE:HD11	2:B:432:VAL:CG2	2.26	0.66
2:N:470:ALA:HB2	2:N:517:VAL:HG21	1.78	0.66
2:N:439:GLU:HB2	2:N:459:ILE:O	1.96	0.66
2:N:530:SER:O	2:N:533:ASP:N	2.28	0.66
1:A:58:GLU:O	1:M:120:THR:CG2	2.43	0.66
3:O:787:TRP:CD1	3:O:807:ARG:HA	2.30	0.66
2:B:567:ALA:HB1	3:C:558:ASP:CG	2.16	0.66
2:N:535:ASP:OD1	2:N:535:ASP:N	2.27	0.66
2:B:567:ALA:HB2	3:C:558:ASP:OD2	1.91	0.66
2:B:498:ARG:O	2:B:522:ASN:ND2	2.29	0.65
2:N:418:ILE:HD11	2:N:432:VAL:CG2	2.26	0.65
6:H:212:PRO:O	6:H:213:ARG:HB2	1.95	0.65
6:Q:212:PRO:O	6:Q:213:ARG:HB2	1.95	0.65
1:A:67:THR:HG21	2:N:387:GLN:HE21	1.58	0.65
2:N:443:LYS:HD2	2:N:456:GLU:HG2	1.78	0.65
3:O:644:LEU:O	3:O:648:ILE:HG13	1.96	0.65
2:B:528:TRP:N	2:B:528:TRP:CD1	2.64	0.65
2:B:568:ASN:CB	2:N:568:ASN:CB	2.57	0.65
2:N:567:ALA:HB1	3:O:558:ASP:OD2	1.94	0.65
1:A:72:GLU:OE1	2:B:389:LEU:HD23	1.95	0.65
1:M:99:PHE:CE1	1:M:195:MET:HE3	2.31	0.65
2:B:443:LYS:HD2	2:B:456:GLU:HG2	1.78	0.65
2:N:563:ARG:HA	3:O:555:LYS:HZ3	0.93	0.65
3:C:633:LYS:HD3	3:O:844:ASP:CG	2.17	0.65
1:A:60:ASN:C	1:M:120:THR:HB	2.15	0.65
3:C:644:LEU:O	3:C:648:ILE:HG13	1.96	0.65
2:N:498:ARG:O	2:N:522:ASN:ND2	2.29	0.65
2:B:527:PRO:HG2	2:B:528:TRP:CD1	2.32	0.64
1:M:78:LYS:HZ3	2:N:388:LYS:HE3	1.57	0.64
1:M:78:LYS:CE	2:N:388:LYS:CE	2.71	0.64
2:B:470:ALA:HB2	2:B:517:VAL:HG21	1.78	0.64
2:N:434:LEU:HD21	2:N:548:ILE:HG21	1.80	0.64
2:N:527:PRO:HG2	2:N:528:TRP:CD1	2.32	0.64

*Continued on next page...*



*Continued from previous page...*

Atom-1	Atom-2	Interatomic distance (Å)	Clash overlap (Å)
2:N:528:TRP:CD1	2:N:528:TRP:N	2.64	0.64
3:C:833:THR:HG21	3:O:837:GLU:N	1.85	0.64
2:N:563:ARG:CA	3:O:555:LYS:HZ2	1.74	0.64
1:A:60:ASN:HB3	1:M:121:SER:N	1.48	0.64
3:C:844:ASP:CG	3:O:633:LYS:HD3	2.17	0.64
2:B:500:ARG:HG2	2:B:522:ASN:CG	2.18	0.64
2:B:567:ALA:CB	2:N:568:ASN:CG	2.64	0.64
3:O:794:ARG:CZ	6:Q:54:ILE:CD1	2.76	0.64
3:C:794:ARG:CZ	6:H:54:ILE:CD1	2.76	0.64
1:A:120:THR:HG1	1:M:57:GLU:CA	2.11	0.63
2:N:500:ARG:HG2	2:N:522:ASN:CG	2.18	0.63
1:A:120:THR:HB	1:M:60:ASN:C	2.15	0.63
1:M:64:GLU:HG2	2:B:387:GLN:HB2	1.78	0.63
2:N:531:LYS:HA	2:N:534:GLU:OE1	1.98	0.63
2:B:434:LEU:HD21	2:B:548:ILE:HG21	1.80	0.63
1:M:180:MET:HE2	1:M:210:GLU:HG2	1.80	0.63
3:C:843:LEU:O	3:C:847:ARG:HG2	1.98	0.63
3:O:843:LEU:O	3:O:847:ARG:HG2	1.98	0.63
1:A:120:THR:CG2	1:M:58:GLU:O	2.43	0.63
2:N:417:ILE:HD13	2:N:548:ILE:HD11	1.81	0.62
2:B:433:PHE:CG	2:B:442:ALA:HB2	2.33	0.62
2:N:510:GLU:HA	2:N:510:GLU:OE1	2.00	0.62
2:B:527:PRO:HB2	2:B:528:TRP:CD1	2.35	0.62
3:C:608:LYS:H	3:C:608:LYS:HE3	1.65	0.62
2:N:458:ARG:HH11	2:N:458:ARG:CG	2.12	0.62
2:N:460:PRO:CG	2:N:463:GLN:HB3	2.20	0.62
1:A:118:THR:HG22	1:A:120:THR:H	1.64	0.62
2:B:458:ARG:HH11	2:B:458:ARG:CG	2.12	0.62
3:C:837:GLU:N	3:O:840:PHE:HB2	2.14	0.62
3:O:608:LYS:H	3:O:608:LYS:CE	2.13	0.62
2:B:531:LYS:HA	2:B:534:GLU:OE1	1.98	0.62
2:N:527:PRO:HB2	2:N:528:TRP:CD1	2.35	0.62
1:A:99:PHE:CE1	1:A:195:MET:HE3	2.35	0.62
1:M:72:GLU:OE1	2:N:389:LEU:CD2	2.40	0.62
3:O:665:ILE:HD11	3:O:680:ILE:HG21	1.82	0.62
2:N:410:VAL:O	2:N:414:LEU:HB2	2.00	0.62
2:N:433:PHE:CG	2:N:442:ALA:HB2	2.33	0.62
3:O:814:PRO:HD2	3:O:815:LYS:HE3	1.82	0.62
1:A:67:THR:HG21	2:N:387:GLN:NE2	2.15	0.62
1:A:180:MET:HE2	1:A:210:GLU:HG2	1.80	0.62
3:O:608:LYS:H	3:O:608:LYS:HE3	1.65	0.62

*Continued on next page...*

*Continued from previous page...*

Atom-1	Atom-2	Interatomic distance (Å)	Clash overlap (Å)
1:A:61:ILE:CB	1:M:120:THR:HG23	2.30	0.61
1:A:67:THR:HG23	2:N:387:GLN:HE21	1.64	0.61
1:M:72:GLU:CG	2:N:389:LEU:CD2	2.77	0.61
2:B:458:ARG:HH11	2:B:458:ARG:HG2	1.65	0.61
3:O:608:LYS:H	3:O:608:LYS:HD3	1.64	0.61
2:B:410:VAL:O	2:B:414:LEU:HB2	2.00	0.61
3:C:608:LYS:H	3:C:608:LYS:HD3	1.64	0.61
3:C:665:ILE:HD11	3:C:680:ILE:HG21	1.82	0.61
2:B:527:PRO:HG2	2:B:528:TRP:HD1	1.65	0.61
3:C:840:PHE:HB2	3:O:837:GLU:N	2.14	0.61
2:B:440:LEU:HD13	2:B:466:ALA:HB1	1.83	0.61
2:N:440:LEU:HD13	2:N:466:ALA:HB1	1.83	0.61
1:A:120:THR:HG23	1:M:61:ILE:CB	2.30	0.61
2:B:435:LEU:HD11	2:B:437:GLN:O	2.01	0.61
3:C:788:GLU:O	3:C:792:LEU:HD13	2.01	0.61
2:N:561:GLN:HE21	2:N:561:GLN:CA	2.10	0.61
1:A:67:THR:CA	2:N:390:LYS:CE	2.75	0.61
3:C:814:PRO:HD2	3:C:815:LYS:HE3	1.82	0.61
1:M:118:THR:HG22	1:M:120:THR:H	1.64	0.61
2:B:475:ILE:HD13	2:B:506:PRO:CD	2.31	0.61
2:B:535:ASP:OD1	2:B:535:ASP:N	2.27	0.61
2:N:458:ARG:HH11	2:N:458:ARG:HG2	1.65	0.61
5:L:125:LEU:HD22	5:L:183:LYS:HG3	1.81	0.61
1:A:118:THR:HG21	1:M:57:GLU:HA	1.83	0.61
2:B:561:GLN:OE1	2:N:561:GLN:O	2.09	0.61
5:R:125:LEU:HD22	5:R:183:LYS:HG3	1.81	0.61
2:B:441:VAL:HG21	2:B:458:ARG:CZ	2.31	0.60
2:N:475:ILE:HD13	2:N:506:PRO:HD3	1.83	0.60
3:C:633:LYS:HB3	3:O:840:PHE:CE2	2.05	0.60
3:O:788:GLU:O	3:O:792:LEU:HD13	2.01	0.60
1:A:61:ILE:CG1	1:M:120:THR:HG23	2.32	0.60
2:B:417:ILE:HD13	2:B:548:ILE:HD11	1.81	0.60
3:C:740:ARG:NH1	3:C:741:LYS:HE2	2.16	0.60
3:C:608:LYS:H	3:C:608:LYS:CE	2.13	0.60
2:B:475:ILE:HD13	2:B:506:PRO:HD3	1.83	0.60
2:N:530:SER:C	2:N:532:PHE:H	2.04	0.60
2:B:399:VAL:HG11	2:B:424:LEU:HD11	1.84	0.60
2:B:530:SER:C	2:B:532:PHE:H	2.04	0.60
2:B:510:GLU:HA	2:B:510:GLU:OE1	2.00	0.60
2:N:475:ILE:HD13	2:N:506:PRO:CD	2.31	0.60
3:O:740:ARG:NH1	3:O:741:LYS:HE2	2.16	0.60

*Continued on next page...*

*Continued from previous page...*

Atom-1	Atom-2	Interatomic distance (Å)	Clash overlap (Å)
1:A:57:GLU:HA	1:M:118:THR:CG2	2.31	0.60
1:M:69:ILE:HG22	2:N:389:LEU:HD12	1.83	0.60
1:M:184:ILE:CD1	1:M:224:LEU:HD12	2.31	0.60
2:B:443:LYS:HD2	2:B:456:GLU:HB3	1.83	0.60
2:N:435:LEU:HD11	2:N:437:GLN:O	2.01	0.60
2:N:441:VAL:HG21	2:N:458:ARG:CZ	2.31	0.60
1:A:118:THR:CG2	1:M:57:GLU:HA	2.31	0.60
1:A:118:THR:HB	1:A:121:SER:HB2	1.82	0.60
1:A:120:THR:HG23	1:M:61:ILE:CG1	2.32	0.60
1:M:118:THR:HB	1:M:121:SER:HB2	1.82	0.60
2:N:459:ILE:HG13	2:N:463:GLN:OE1	2.02	0.60
6:Q:128:SER:H	6:Q:213:ARG:HH21	1.50	0.59
1:M:70:GLN:O	2:N:389:LEU:CD2	2.50	0.59
2:B:459:ILE:HG13	2:B:463:GLN:OE1	2.02	0.59
1:A:184:ILE:CD1	1:A:224:LEU:HD12	2.31	0.59
2:N:443:LYS:HD2	2:N:456:GLU:HB3	1.83	0.59
3:O:702:SER:HA	7:O:902:IBM:O6	2.03	0.59
2:N:527:PRO:HG2	2:N:528:TRP:HD1	1.65	0.59
3:C:702:SER:HA	7:C:902:IBM:O6	2.03	0.59
3:C:840:PHE:CE2	3:O:633:LYS:CG	2.85	0.59
1:A:57:GLU:HA	1:M:118:THR:HG21	1.83	0.59
2:N:399:VAL:HG11	2:N:424:LEU:HD11	1.84	0.59
2:B:432:VAL:CG1	2:B:518:ALA:HB2	2.33	0.59
2:B:509:ASN:OD1	2:B:513:GLU:HG3	2.03	0.59
3:O:664:TYR:HB2	3:O:789:GLN:NE2	2.18	0.58
3:C:564:PHE:HD1	3:C:777:ARG:CZ	2.17	0.58
3:C:664:TYR:HB2	3:C:789:GLN:NE2	2.18	0.58
6:H:128:SER:H	6:H:213:ARG:HH21	1.50	0.58
1:M:72:GLU:CB	2:N:389:LEU:HD22	2.27	0.58
1:M:64:GLU:HA	2:B:387:GLN:CD	2.15	0.58
2:B:471:THR:HG22	2:B:472:THR:N	2.19	0.58
2:B:476:LEU:HD23	2:B:478:ILE:HD12	1.85	0.58
1:A:67:THR:HG23	2:N:387:GLN:NE2	2.17	0.58
2:B:567:ALA:HB2	3:C:555:LYS:HG2	1.85	0.58
2:B:567:ALA:HB2	3:C:555:LYS:HG3	1.84	0.58
2:N:476:LEU:HD23	2:N:478:ILE:HD12	1.85	0.58
3:C:837:GLU:CB	3:O:836:SER:O	2.52	0.58
2:N:563:ARG:HG2	3:O:555:LYS:NZ	2.18	0.58
1:A:118:THR:OG1	1:M:57:GLU:OE2	2.20	0.57
2:N:398:GLN:HE22	2:N:401:LYS:HD3	1.69	0.57
2:B:443:LYS:HA	2:B:456:GLU:HA	1.85	0.57

*Continued on next page...*

*Continued from previous page...*

Atom-1	Atom-2	Interatomic distance (Å)	Clash overlap (Å)
2:B:475:ILE:HG23	2:B:505:PHE:HB3	1.85	0.57
2:B:564:SER:N	3:C:555:LYS:HD2	2.17	0.57
2:N:563:ARG:CG	3:O:555:LYS:NZ	2.59	0.57
3:C:701:LEU:O	7:C:902:IBM:H101	2.05	0.57
3:C:795:THR:HB	6:H:30:LYS:HZ2	1.68	0.57
2:B:460:PRO:CG	2:B:463:GLN:HB3	2.20	0.57
2:N:443:LYS:HA	2:N:456:GLU:HA	1.85	0.57
3:C:807:ARG:HG3	3:C:807:ARG:HH11	1.69	0.57
2:N:471:THR:HG22	2:N:472:THR:N	2.19	0.57
2:N:509:ASN:OD1	2:N:513:GLU:HG3	2.04	0.57
1:A:120:THR:CG2	1:M:58:GLU:HA	2.29	0.57
2:N:475:ILE:HG23	2:N:505:PHE:HB3	1.85	0.57
3:O:564:PHE:HD1	3:O:777:ARG:CZ	2.17	0.57
3:O:807:ARG:HG3	3:O:807:ARG:HH11	1.69	0.57
2:N:500:ARG:NE	2:N:522:ASN:HB3	2.20	0.57
3:O:808:ASN:HD21	6:Q:56:ASP:CB	2.18	0.57
1:A:61:ILE:HB	1:M:120:THR:HG23	1.82	0.57
2:N:502:ILE:HG21	2:N:519:GLU:OE1	2.05	0.57
6:H:60:VAL:HG22	6:H:61:PRO:HD2	1.87	0.57
2:B:567:ALA:HA	3:C:558:ASP:OD2	2.03	0.57
2:B:403:LEU:HD22	2:B:417:ILE:HG13	1.87	0.56
2:B:528:TRP:N	2:B:528:TRP:HD1	2.03	0.56
3:C:836:SER:O	3:O:837:GLU:CB	2.52	0.56
6:H:54:ILE:HG13	6:H:56:ASP:H	1.70	0.56
2:B:471:THR:HG22	2:B:472:THR:HG22	1.88	0.56
2:B:459:ILE:HD12	2:B:460:PRO:CD	2.35	0.56
6:Q:60:VAL:HG22	6:Q:61:PRO:HD2	1.87	0.56
1:A:58:GLU:HA	1:M:120:THR:CG2	2.29	0.56
1:A:121:SER:CA	1:M:60:ASN:CG	2.67	0.56
2:B:398:GLN:HE22	2:B:401:LYS:HD3	1.69	0.56
2:N:528:TRP:N	2:N:528:TRP:HD1	2.03	0.56
3:O:701:LEU:O	7:O:902:IBM:H101	2.05	0.56
6:Q:54:ILE:HG13	6:Q:56:ASP:H	1.70	0.56
3:C:808:ASN:HD21	6:H:56:ASP:CB	2.18	0.56
3:C:838:ASP:C	3:O:838:ASP:HA	2.26	0.56
2:N:432:VAL:CG1	2:N:518:ALA:HB2	2.33	0.56
1:A:72:GLU:CB	2:B:389:LEU:HD22	2.21	0.56
2:N:459:ILE:HD12	2:N:460:PRO:CD	2.35	0.56
3:O:608:LYS:CD	3:O:608:LYS:N	2.69	0.56
3:C:690:LEU:O	3:C:690:LEU:HD23	2.05	0.56
2:N:471:THR:HG22	2:N:472:THR:CG2	2.36	0.56

*Continued on next page...*

*Continued from previous page...*

Atom-1	Atom-2	Interatomic distance (Å)	Clash overlap (Å)
2:N:563:ARG:CG	3:O:555:LYS:CE	2.81	0.56
3:C:608:LYS:HD3	3:C:608:LYS:N	2.21	0.56
6:Q:12:VAL:HG21	6:Q:82(C):LEU:HD13	1.88	0.56
2:B:506:PRO:O	2:B:507:ILE:HD12	2.06	0.56
2:N:403:LEU:HD22	2:N:417:ILE:HG13	1.87	0.56
6:H:134:SER:O	6:H:185:SER:HB2	2.06	0.56
1:A:57:GLU:OE2	1:M:118:THR:OG1	2.20	0.55
2:B:500:ARG:NE	2:B:522:ASN:HB3	2.20	0.55
2:B:502:ILE:HG21	2:B:519:GLU:OE1	2.05	0.55
2:B:439:GLU:HA	2:B:461:ALA:HB2	1.88	0.55
3:O:690:LEU:O	3:O:690:LEU:HD23	2.05	0.55
5:L:36:TYR:HE1	6:H:100(C):PHE:O	1.90	0.55
2:B:530:SER:O	2:B:533:ASP:HB2	2.07	0.55
2:N:506:PRO:O	2:N:507:ILE:HD12	2.06	0.55
3:O:709:TYR:CZ	3:O:713:LEU:HD11	2.42	0.55
3:O:795:THR:HB	6:Q:30:LYS:HZ2	1.70	0.55
3:O:809:LYS:HA	3:O:809:LYS:CE	2.36	0.55
5:R:36:TYR:HE1	6:Q:100(C):PHE:O	1.90	0.55
2:N:505:PHE:HB2	2:N:506:PRO:HD2	1.88	0.55
3:C:794:ARG:HG3	6:H:54:ILE:HG22	1.85	0.55
6:H:12:VAL:HG21	6:H:82(C):LEU:HD13	1.88	0.55
1:M:70:GLN:O	2:N:389:LEU:HD22	2.06	0.55
2:B:471:THR:HG22	2:B:472:THR:CG2	2.36	0.55
2:B:500:ARG:NH2	2:B:523:LYS:O	2.40	0.55
2:N:439:GLU:HA	2:N:461:ALA:HB2	1.88	0.55
2:N:530:SER:O	2:N:533:ASP:HB2	2.07	0.55
3:O:608:LYS:HD3	3:O:608:LYS:N	2.21	0.55
6:Q:134:SER:O	6:Q:185:SER:HB2	2.06	0.55
2:B:418:ILE:CD1	2:B:444:VAL:HG21	2.37	0.55
2:B:563:ARG:O	3:C:555:LYS:HG2	2.04	0.55
2:B:568:ASN:ND2	2:N:567:ALA:HB1	1.91	0.55
2:N:471:THR:HG22	2:N:472:THR:HG22	1.88	0.55
3:O:794:ARG:HG3	6:Q:54:ILE:HG22	1.85	0.55
1:A:90:LEU:N	1:M:89:GLN:HB3	2.22	0.55
2:B:505:PHE:HB2	2:B:506:PRO:HD2	1.88	0.55
3:C:709:TYR:CZ	3:C:713:LEU:HD11	2.42	0.55
1:A:89:GLN:HB3	1:M:90:LEU:N	2.22	0.54
1:M:70:GLN:C	2:N:389:LEU:HD22	2.28	0.54
3:O:736:PHE:CZ	3:O:827:GLN:HG3	2.42	0.54
3:C:608:LYS:CD	3:C:608:LYS:N	2.69	0.54
3:O:572:ALA:O	3:O:576:ILE:HG13	2.08	0.54

*Continued on next page...*

*Continued from previous page...*

Atom-1	Atom-2	Interatomic distance (Å)	Clash overlap (Å)
2:B:505:PHE:HB2	2:B:506:PRO:CD	2.37	0.54
2:N:500:ARG:NH2	2:N:523:LYS:O	2.39	0.54
3:O:830:GLU:HA	3:O:843:LEU:HD22	1.90	0.54
1:A:72:GLU:CG	2:B:389:LEU:CD2	2.84	0.54
2:B:439:GLU:CA	2:B:461:ALA:HB2	2.38	0.54
2:N:457:ILE:HG22	2:N:457:ILE:O	2.07	0.54
3:C:633:LYS:CG	3:O:840:PHE:CE2	2.85	0.54
3:C:736:PHE:CZ	3:C:827:GLN:HG3	2.42	0.54
3:C:838:ASP:HA	3:O:838:ASP:C	2.26	0.54
3:C:841:PRO:HA	3:O:633:LYS:HD2	1.89	0.54
3:O:795:THR:CB	6:Q:30:LYS:NZ	2.70	0.54
3:C:834:HIS:HA	3:O:834:HIS:HA	1.89	0.54
2:N:418:ILE:CD1	2:N:444:VAL:HG21	2.37	0.54
2:N:443:LYS:CD	2:N:456:GLU:HB3	2.38	0.54
3:C:815:LYS:H	3:C:815:LYS:CE	2.20	0.54
3:C:840:PHE:N	3:O:837:GLU:CB	2.71	0.54
1:A:64:GLU:HA	2:N:387:GLN:CD	2.21	0.54
1:A:75:SER:CB	2:B:389:LEU:HD11	2.35	0.54
1:A:120:THR:HG23	1:M:61:ILE:HB	1.82	0.54
3:C:838:ASP:N	3:O:840:PHE:H	2.06	0.54
3:O:772:TRP:HB3	3:O:773:PRO:HD3	1.90	0.54
6:H:119:PRO:HB3	6:H:145:TYR:HB3	1.90	0.54
2:B:499:THR:O	2:B:500:ARG:HD3	2.08	0.54
2:N:505:PHE:HB2	2:N:506:PRO:CD	2.37	0.54
6:H:39:GLN:HB2	6:H:45:LEU:CD2	2.36	0.54
2:B:561:GLN:HE21	2:B:561:GLN:CA	2.10	0.54
2:N:455:TYR:CD2	2:N:455:TYR:N	2.76	0.54
3:C:572:ALA:O	3:C:576:ILE:HG13	2.08	0.54
3:C:633:LYS:HD2	3:O:841:PRO:HA	1.89	0.54
3:O:793:GLU:O	3:O:797:LEU:HB2	2.08	0.53
1:A:161:ASN:OD1	1:A:162:ASN:O	2.27	0.53
2:B:567:ALA:HB1	2:N:568:ASN:ND2	1.94	0.53
6:Q:119:PRO:HB3	6:Q:145:TYR:HB3	1.90	0.53
2:N:439:GLU:CA	2:N:461:ALA:HB2	2.38	0.53
3:C:836:SER:O	3:O:837:GLU:HB3	2.09	0.53
3:O:815:LYS:H	3:O:815:LYS:CE	2.20	0.53
2:B:444:VAL:O	2:B:444:VAL:HG13	2.08	0.53
2:N:530:SER:C	2:N:532:PHE:N	2.62	0.53
3:C:793:GLU:O	3:C:797:LEU:HB2	2.08	0.53
6:H:40:ARG:HD3	6:H:43:LYS:HD2	1.90	0.53
2:B:521:VAL:HG12	2:B:522:ASN:OD1	2.08	0.53

*Continued on next page...*

*Continued from previous page...*

Atom-1	Atom-2	Interatomic distance (Å)	Clash overlap (Å)
3:C:837:GLU:CB	3:O:840:PHE:N	2.71	0.53
1:M:161:ASN:OD1	1:M:162:ASN:O	2.27	0.53
2:B:398:GLN:OE1	2:B:398:GLN:HA	2.06	0.53
2:N:499:THR:O	2:N:500:ARG:HD3	2.08	0.53
3:C:830:GLU:HA	3:C:843:LEU:HD22	1.90	0.53
1:M:69:ILE:HG22	2:N:389:LEU:CD1	2.39	0.53
2:B:443:LYS:CD	2:B:456:GLU:HB3	2.38	0.53
2:N:521:VAL:HG12	2:N:522:ASN:OD1	2.08	0.53
3:C:670:HIS:ND1	3:C:672:LEU:HB2	2.24	0.53
6:Q:39:GLN:HB2	6:Q:45:LEU:CD2	2.36	0.53
2:B:567:ALA:CB	3:C:555:LYS:HG3	2.39	0.53
6:Q:40:ARG:HD3	6:Q:43:LYS:HD2	1.90	0.53
3:C:772:TRP:HB3	3:C:773:PRO:HD3	1.90	0.52
3:O:670:HIS:ND1	3:O:672:LEU:HB2	2.24	0.52
1:A:60:ASN:HB3	1:M:121:SER:CA	2.33	0.52
2:B:479:PRO:HB3	2:B:528:TRP:CE3	2.45	0.52
2:B:530:SER:C	2:B:532:PHE:N	2.62	0.52
2:N:458:ARG:O	2:N:459:ILE:HB	2.09	0.52
2:N:563:ARG:O	3:O:555:LYS:HG3	2.05	0.52
1:A:60:ASN:CG	1:M:121:SER:CA	2.67	0.52
1:A:180:MET:HE2	1:A:210:GLU:CG	2.39	0.52
3:C:840:PHE:H	3:O:838:ASP:N	2.06	0.52
1:M:73:ALA:HB3	1:M:74:GLY:CA	2.38	0.52
2:B:457:ILE:O	2:B:457:ILE:HG22	2.07	0.52
2:N:444:VAL:HG13	2:N:444:VAL:O	2.08	0.52
2:N:479:PRO:HB3	2:N:528:TRP:CE3	2.45	0.52
2:N:570:MET:CE	3:O:560:SER:C	2.49	0.52
2:B:421:ALA:HB2	2:B:540:PHE:CE2	2.45	0.52
2:N:435:LEU:HD13	2:N:436:ASP:N	2.24	0.52
1:A:89:GLN:HB3	1:M:89:GLN:CA	2.36	0.52
2:B:435:LEU:HD13	2:B:436:ASP:N	2.24	0.52
3:C:663:SER:O	3:C:667:ARG:HD3	2.10	0.52
3:C:808:ASN:HD21	6:H:56:ASP:HB3	1.75	0.52
3:O:745:ASN:OD1	3:O:747:GLU:HG2	2.09	0.52
5:L:83:LEU:HD11	5:L:106:LEU:HD13	1.92	0.52
1:M:72:GLU:CG	2:N:389:LEU:HD22	2.40	0.52
1:M:99:PHE:CE1	1:M:195:MET:CE	2.93	0.52
3:C:745:ASN:OD1	3:C:747:GLU:HG2	2.09	0.52
3:C:837:GLU:HB3	3:O:836:SER:O	2.09	0.52
3:O:794:ARG:HG3	6:Q:54:ILE:CG2	2.40	0.52
1:A:87:LEU:HD22	1:A:91:LEU:HD11	1.92	0.52

*Continued on next page...*

*Continued from previous page...*

Atom-1	Atom-2	Interatomic distance (Å)	Clash overlap (Å)
3:O:777:ARG:O	3:O:780:GLU:HB2	2.09	0.52
4:D:81:LEU:HB3	4:D:87:ILE:HD13	1.92	0.51
1:A:99:PHE:CE1	1:A:195:MET:CE	2.93	0.51
3:C:795:THR:CB	6:H:30:LYS:NZ	2.70	0.51
2:N:398:GLN:HA	2:N:398:GLN:OE1	2.06	0.51
3:O:663:SER:O	3:O:667:ARG:HD3	2.10	0.51
1:A:60:ASN:H	1:M:120:THR:HG1	1.57	0.51
2:B:458:ARG:CG	2:B:458:ARG:NH1	2.73	0.51
2:N:563:ARG:O	3:O:555:LYS:HG2	2.05	0.51
5:R:124:GLN:O	5:R:127:SER:HB2	2.11	0.51
2:N:421:ALA:HB2	2:N:540:PHE:CE2	2.45	0.51
2:N:467:GLY:O	2:N:471:THR:HB	2.10	0.51
2:N:571:MET:O	3:C:631:ALA:HB1	2.05	0.51
5:R:83:LEU:HD11	5:R:106:LEU:HD13	1.92	0.51
2:B:477:ASN:OD1	2:B:478:ILE:N	2.44	0.51
2:N:477:ASN:OD1	2:N:478:ILE:N	2.44	0.51
7:O:901:IBM:H12	7:O:901:IBM:O2	2.11	0.51
1:A:61:ILE:CA	1:M:120:THR:CG2	2.69	0.51
1:M:180:MET:HE2	1:M:210:GLU:CG	2.40	0.51
2:B:455:TYR:CD2	2:B:455:TYR:N	2.76	0.51
2:B:458:ARG:O	2:B:459:ILE:HB	2.09	0.51
2:B:563:ARG:CA	3:C:555:LYS:CE	2.72	0.51
3:C:794:ARG:HG3	6:H:54:ILE:CG2	2.40	0.51
5:L:124:GLN:O	5:L:127:SER:HB2	2.11	0.51
5:L:195:GLU:HG2	5:L:206:VAL:HG22	1.93	0.51
3:C:777:ARG:O	3:C:780:GLU:HB2	2.09	0.51
3:O:808:ASN:HD21	6:Q:56:ASP:HB3	1.75	0.51
1:A:57:GLU:HB2	1:M:118:THR:CG2	2.03	0.51
2:N:441:VAL:HG11	2:N:443:LYS:HE3	1.93	0.51
3:O:794:ARG:NH1	6:Q:54:ILE:HD12	2.26	0.51
1:A:61:ILE:HG13	1:M:120:THR:HG23	1.93	0.51
2:B:465:ILE:HG22	2:B:466:ALA:N	2.25	0.51
3:C:562:SER:HB2	3:C:774:ILE:CD1	2.41	0.51
3:C:840:PHE:CE2	3:O:633:LYS:CD	2.94	0.51
3:O:562:SER:HB2	3:O:774:ILE:CD1	2.41	0.50
4:P:81:LEU:HB3	4:P:87:ILE:HD13	1.92	0.50
2:N:418:ILE:CG1	2:N:432:VAL:HG22	2.41	0.50
2:N:465:ILE:HG22	2:N:466:ALA:N	2.26	0.50
3:O:765:LEU:HD22	3:O:765:LEU:H	1.76	0.50
1:A:82:LYS:NZ	1:M:64:GLU:OE2	2.38	0.50
1:A:142:ILE:CB	1:A:179:MET:HE1	2.41	0.50

*Continued on next page...*



*Continued from previous page...*

Atom-1	Atom-2	Interatomic distance (Å)	Clash overlap (Å)
2:B:467:GLY:O	2:B:471:THR:HB	2.10	0.50
3:C:740:ARG:HG2	3:O:742:ASN:HB3	1.94	0.50
3:C:823:PHE:HD2	3:C:824:VAL:HG23	1.76	0.50
2:B:473:GLY:HA2	2:B:514:VAL:HG21	1.93	0.50
2:B:536:LEU:HD22	2:B:536:LEU:O	2.12	0.50
3:C:765:LEU:HD22	3:C:765:LEU:H	1.76	0.50
3:C:742:ASN:HB3	3:O:740:ARG:HG2	1.94	0.50
3:C:809:LYS:HD2	3:C:809:LYS:N	2.27	0.50
3:O:761:THR:O	3:O:765:LEU:CD2	2.58	0.50
3:O:809:LYS:HD2	3:O:809:LYS:N	2.27	0.50
1:A:120:THR:HG23	1:M:61:ILE:HG13	1.93	0.50
2:B:418:ILE:CG1	2:B:432:VAL:HG22	2.41	0.50
2:N:473:GLY:HA2	2:N:514:VAL:HG21	1.93	0.50
7:C:901:IBM:H12	7:C:901:IBM:O2	2.11	0.50
6:H:99:ASP:OD2	6:H:100(B):ARG:HD3	2.12	0.50
3:C:794:ARG:NH1	6:H:54:ILE:HD12	2.26	0.50
1:M:87:LEU:HD22	1:M:91:LEU:HD11	1.92	0.50
2:N:428:GLU:O	2:N:429:ILE:HG23	2.12	0.50
3:C:840:PHE:HB2	3:O:838:ASP:N	2.17	0.50
1:A:120:THR:OG1	1:M:60:ASN:HB2	2.12	0.50
2:N:507:ILE:O	2:N:508:LYS:O	2.30	0.50
3:O:823:PHE:HD2	3:O:824:VAL:HG23	1.76	0.50
5:R:195:GLU:HG2	5:R:206:VAL:HG22	1.93	0.50
2:N:536:LEU:HD22	2:N:536:LEU:O	2.12	0.49
2:B:428:GLU:O	2:B:429:ILE:HG23	2.12	0.49
2:B:441:VAL:HG11	2:B:443:LYS:HE3	1.93	0.49
3:C:840:PHE:CA	3:O:837:GLU:HB2	2.43	0.49
2:B:433:PHE:CD2	2:B:442:ALA:CB	2.96	0.49
2:N:560:ALA:HB1	3:O:553:THR:HG23	1.95	0.49
2:N:567:ALA:HB1	3:O:558:ASP:CG	2.33	0.49
3:C:740:ARG:HG2	3:O:742:ASN:CB	2.43	0.49
2:B:441:VAL:HG22	2:B:458:ARG:HG3	1.94	0.49
3:C:562:SER:HB2	3:C:774:ILE:HD13	1.95	0.49
3:C:837:GLU:HB2	3:O:840:PHE:CA	2.43	0.49
1:A:89:GLN:HG2	1:M:90:LEU:HG	1.95	0.49
2:N:439:GLU:HA	2:N:461:ALA:N	2.27	0.49
1:A:64:GLU:OE2	1:M:82:LYS:NZ	2.38	0.49
2:B:417:ILE:CD1	2:B:548:ILE:HD11	2.42	0.49
2:N:416:GLU:HA	2:N:416:GLU:OE1	2.12	0.49
2:N:417:ILE:HD13	2:N:548:ILE:CD1	2.43	0.49
1:A:121:SER:CA	1:M:60:ASN:HD22	2.21	0.49

*Continued on next page...*

*Continued from previous page...*

Atom-1	Atom-2	Interatomic distance (Å)	Clash overlap (Å)
1:A:199:LYS:HE2	1:A:201:ASN:OD1	2.12	0.49
1:M:142:ILE:CB	1:M:179:MET:HE1	2.42	0.49
2:N:441:VAL:HG22	2:N:458:ARG:HG3	1.94	0.49
6:Q:99:ASP:OD2	6:Q:100(B):ARG:HD3	2.12	0.49
1:M:118:THR:HG23	1:M:119:PRO:HD2	1.95	0.49
2:B:417:ILE:HD13	2:B:548:ILE:CD1	2.43	0.49
3:C:633:LYS:CD	3:O:840:PHE:CE2	2.94	0.49
7:C:902:IBM:HN9	7:C:902:IBM:H133	1.78	0.49
1:A:60:ASN:HB2	1:M:120:THR:OG1	2.12	0.49
1:M:199:LYS:HE2	1:M:201:ASN:OD1	2.12	0.49
2:B:568:ASN:CA	2:N:568:ASN:CB	2.91	0.49
2:N:433:PHE:CD2	2:N:442:ALA:CB	2.96	0.49
3:O:562:SER:HB2	3:O:774:ILE:HD13	1.95	0.49
2:B:507:ILE:O	2:B:508:LYS:O	2.30	0.48
7:O:902:IBM:H133	7:O:902:IBM:HN9	1.78	0.48
2:B:439:GLU:HA	2:B:461:ALA:N	2.27	0.48
2:B:479:PRO:CB	2:B:528:TRP:CE3	2.97	0.48
2:N:402:ASN:O	2:N:406:HIS:HD2	1.95	0.48
1:A:90:LEU:HG	1:M:89:GLN:HG2	1.95	0.48
2:B:402:ASN:O	2:B:406:HIS:HD2	1.95	0.48
2:B:505:PHE:HE1	2:B:541:SER:HG	1.60	0.48
2:B:527:PRO:CB	2:B:528:TRP:CD1	2.97	0.48
2:N:417:ILE:CD1	2:N:548:ILE:HD11	2.42	0.48
3:C:742:ASN:CB	3:O:740:ARG:HG2	2.43	0.48
5:R:44:PRO:HD2	6:Q:103:TRP:HB3	1.95	0.48
1:A:89:GLN:HB3	1:M:89:GLN:C	2.34	0.48
2:B:565:HIS:HB2	2:N:564:SER:HB3	1.95	0.48
2:B:416:GLU:HA	2:B:416:GLU:OE1	2.12	0.48
2:B:559:GLU:O	2:B:562:TYR:HB3	2.14	0.48
2:N:433:PHE:CE2	2:N:442:ALA:HB3	2.49	0.48
2:N:508:LYS:H	2:N:514:VAL:HA	1.79	0.48
1:M:72:GLU:OE2	2:N:392:GLU:CB	2.37	0.48
2:N:501:ASN:C	2:N:502:ILE:HG13	2.34	0.48
2:N:527:PRO:CB	2:N:528:TRP:CD1	2.97	0.48
3:C:601:SER:O	3:C:604:LYS:HG2	2.14	0.48
1:A:70:GLN:C	2:B:389:LEU:CD1	2.68	0.48
2:N:441:VAL:HG21	2:N:458:ARG:NH2	2.29	0.48
3:C:753:GLU:O	3:C:753:GLU:HG2	2.13	0.48
1:A:118:THR:HG23	1:A:119:PRO:HD2	1.95	0.47
2:B:478:ILE:HG23	2:B:480:ASP:O	2.14	0.47
2:B:563:ARG:HG2	3:C:555:LYS:NZ	2.27	0.47

*Continued on next page...*

*Continued from previous page...*

Atom-1	Atom-2	Interatomic distance (Å)	Clash overlap (Å)
2:B:433:PHE:CE2	2:B:442:ALA:HB3	2.49	0.47
2:B:568:ASN:CB	2:N:568:ASN:CA	2.91	0.47
3:C:765:LEU:O	3:C:768:ILE:HG22	2.14	0.47
3:O:765:LEU:O	3:O:768:ILE:HG22	2.14	0.47
2:B:460:PRO:HG2	2:B:463:GLN:CG	2.44	0.47
3:O:753:GLU:O	3:O:753:GLU:HG2	2.13	0.47
6:Q:60:VAL:HG22	6:Q:61:PRO:CD	2.44	0.47
2:B:567:ALA:O	2:B:570:MET:HB2	2.14	0.47
2:B:503:LEU:HD12	2:B:504:CYS:N	2.30	0.47
2:N:478:ILE:HG23	2:N:480:ASP:O	2.14	0.47
2:N:479:PRO:CB	2:N:528:TRP:CE3	2.97	0.47
3:O:793:GLU:OE2	3:O:801:PRO:HA	2.15	0.47
5:L:44:PRO:HD2	6:H:103:TRP:HB3	1.95	0.47
1:A:89:GLN:CA	1:M:89:GLN:HB3	2.36	0.47
2:B:441:VAL:HG21	2:B:458:ARG:NH2	2.29	0.47
2:N:567:ALA:O	2:N:570:MET:HB2	2.14	0.47
1:A:73:ALA:HB3	1:A:74:GLY:CA	2.38	0.47
1:A:89:GLN:C	1:M:89:GLN:HB3	2.34	0.47
2:N:567:ALA:HB2	3:O:558:ASP:OD2	2.05	0.47
3:C:690:LEU:HD23	3:C:690:LEU:C	2.35	0.47
3:C:840:PHE:N	3:O:837:GLU:HB2	2.29	0.47
3:O:601:SER:O	3:O:604:LYS:HG2	2.14	0.47
3:O:690:LEU:HD23	3:O:690:LEU:C	2.35	0.47
1:A:120:THR:CG2	1:M:61:ILE:CA	2.69	0.47
1:M:67:THR:CB	2:B:390:LYS:CE	2.81	0.47
3:C:795:THR:HB	6:H:30:LYS:HZ3	1.78	0.47
6:Q:35:HIS:HB2	6:Q:93:ASN:OD1	2.15	0.47
2:B:532:PHE:CD1	2:B:532:PHE:C	2.89	0.47
3:C:837:GLU:HB2	3:O:840:PHE:N	2.29	0.47
4:D:86:ILE:HG22	4:D:87:ILE:H	1.80	0.47
1:A:60:ASN:HD22	1:M:121:SER:CA	2.21	0.46
3:C:813:LEU:HD22	3:C:853:TRP:CZ3	2.51	0.46
3:O:778:ILE:O	3:O:782:VAL:HG23	2.15	0.46
1:A:142:ILE:O	1:A:146:VAL:HG23	2.15	0.46
3:C:778:ILE:O	3:C:782:VAL:HG23	2.15	0.46
2:B:508:LYS:H	2:B:514:VAL:HA	1.79	0.46
2:N:559:GLU:O	2:N:562:TYR:HB3	2.14	0.46
3:C:665:ILE:HD12	3:C:673:ALA:HB2	1.97	0.46
3:C:840:PHE:N	3:C:841:PRO:CD	2.78	0.46
3:O:790:GLY:HA3	3:O:805:MET:O	2.16	0.46
2:B:460:PRO:CG	2:B:463:GLN:NE2	2.78	0.46

*Continued on next page...*

*Continued from previous page...*

Atom-1	Atom-2	Interatomic distance (Å)	Clash overlap (Å)
2:N:460:PRO:CG	2:N:463:GLN:NE2	2.78	0.46
2:N:532:PHE:C	2:N:532:PHE:CD1	2.89	0.46
3:C:641:LEU:HD23	3:C:641:LEU:HA	1.73	0.46
3:O:795:THR:HB	6:Q:30:LYS:HZ3	1.75	0.46
1:M:142:ILE:O	1:M:146:VAL:HG23	2.15	0.46
2:B:459:ILE:HD12	2:B:460:PRO:HD3	1.97	0.46
2:N:508:LYS:N	2:N:514:VAL:HA	2.31	0.46
3:C:793:GLU:OE2	3:C:801:PRO:HA	2.15	0.46
3:O:840:PHE:N	3:O:841:PRO:CD	2.78	0.46
2:B:501:ASN:C	2:B:502:ILE:HG13	2.35	0.46
2:N:459:ILE:HD12	2:N:460:PRO:HD3	1.97	0.46
2:N:460:PRO:HG2	2:N:463:GLN:CG	2.44	0.46
6:H:60:VAL:HG22	6:H:61:PRO:CD	2.44	0.46
1:A:68:GLU:OE1	1:M:64:GLU:OE2	2.34	0.46
2:N:503:LEU:HD12	2:N:504:CYS:N	2.30	0.46
2:N:569:GLU:CD	3:C:552:GLN:HB2	2.35	0.46
3:C:618:ALA:HB1	3:C:651:LEU:O	2.16	0.46
1:M:72:GLU:CD	2:N:389:LEU:HD23	2.32	0.46
2:N:428:GLU:HB2	2:N:522:ASN:HB2	1.97	0.46
3:O:570:GLU:HA	3:O:573:LEU:HD12	1.98	0.46
6:H:35:HIS:HB2	6:H:93:ASN:OD1	2.15	0.46
1:M:180:MET:HE2	1:M:210:GLU:HA	1.98	0.46
2:B:471:THR:CG2	2:B:472:THR:N	2.79	0.46
3:C:665:ILE:HG13	3:C:666:GLN:N	2.31	0.46
3:O:665:ILE:HD12	3:O:673:ALA:HB2	1.97	0.46
2:N:465:ILE:CD1	2:N:502:ILE:HD13	2.46	0.46
3:C:570:GLU:HA	3:C:573:LEU:HD12	1.98	0.46
1:M:162:ASN:O	1:M:163:HIS:HB2	2.16	0.45
2:B:508:LYS:HA	2:B:513:GLU:C	2.37	0.45
2:B:508:LYS:N	2:B:514:VAL:HA	2.31	0.45
2:N:536:LEU:HA	2:N:536:LEU:HD23	1.71	0.45
3:C:813:LEU:HB3	3:C:814:PRO:CD	2.45	0.45
1:A:64:GLU:OE2	1:M:68:GLU:OE1	2.34	0.45
2:N:458:ARG:CG	2:N:458:ARG:NH1	2.73	0.45
2:N:471:THR:CG2	2:N:472:THR:N	2.79	0.45
3:C:809:LYS:HA	3:C:809:LYS:CE	2.36	0.45
6:H:192:THR:HG23	6:H:209:LYS:HE3	1.99	0.45
2:B:528:TRP:HB2	2:B:529:PHE:H	1.49	0.45
2:N:433:PHE:CE2	2:N:442:ALA:CB	2.99	0.45
3:C:790:GLY:HA3	3:C:805:MET:O	2.16	0.45
6:Q:192:THR:HG23	6:Q:209:LYS:HE3	1.99	0.45

*Continued on next page...*

*Continued from previous page...*

Atom-1	Atom-2	Interatomic distance (Å)	Clash overlap (Å)
2:B:433:PHE:CE2	2:B:442:ALA:CB	2.99	0.45
3:O:618:ALA:HB1	3:O:651:LEU:O	2.16	0.45
4:P:86:ILE:HG22	4:P:87:ILE:N	2.31	0.45
2:B:392:GLU:OE2	2:B:532:PHE:CE1	2.70	0.45
3:C:654:ASP:HA	3:C:685:HIS:CD2	2.51	0.45
3:O:813:LEU:HD22	3:O:853:TRP:CZ3	2.51	0.45
1:M:162:ASN:O	1:M:163:HIS:CB	2.65	0.45
1:M:142:ILE:HG21	1:M:155:ILE:CD1	2.47	0.45
2:N:393:CYS:O	2:N:397:LEU:N	2.35	0.45
3:C:633:LYS:CD	3:O:844:ASP:CB	2.92	0.45
4:D:78:LEU:HD23	4:D:78:LEU:HA	1.76	0.45
4:D:86:ILE:HG22	4:D:87:ILE:N	2.31	0.45
4:P:86:ILE:HG22	4:P:87:ILE:H	1.80	0.45
1:M:213:PHE:CE1	1:M:217:LEU:HD11	2.52	0.45
1:A:180:MET:HE2	1:A:210:GLU:HA	1.99	0.45
1:A:213:PHE:CE1	1:A:217:LEU:HD11	2.52	0.45
3:C:844:ASP:CB	3:O:633:LYS:CD	2.92	0.45
1:A:121:SER:CA	1:M:60:ASN:HB3	2.33	0.45
2:B:428:GLU:HB2	2:B:522:ASN:HB2	1.98	0.45
2:N:392:GLU:OE2	2:N:532:PHE:CE1	2.70	0.45
2:N:395:ALA:O	2:N:399:VAL:HG12	2.17	0.45
6:Q:160:SER:O	6:Q:163:VAL:HG13	2.17	0.45
1:A:162:ASN:O	1:A:163:HIS:CB	2.65	0.44
1:M:99:PHE:HD2	1:M:110:VAL:HG13	1.82	0.44
2:N:425:SER:O	2:N:426:ASN:HB2	2.17	0.44
3:O:654:ASP:HA	3:O:685:HIS:CD2	2.51	0.44
3:O:665:ILE:HG13	3:O:666:GLN:N	2.31	0.44
2:N:459:ILE:CG1	2:N:460:PRO:HD2	2.48	0.44
2:N:508:LYS:HA	2:N:513:GLU:C	2.37	0.44
3:C:807:ARG:HG3	3:C:807:ARG:NH1	2.32	0.44
2:B:465:ILE:CD1	2:B:502:ILE:HD13	2.46	0.44
3:C:856:LEU:HD23	3:C:856:LEU:HA	1.79	0.44
3:O:795:THR:HG23	6:Q:53:GLU:CD	2.10	0.44
5:L:214:CYS:OXT	5:L:214:CYS:SG	2.76	0.44
2:B:459:ILE:CG1	2:B:460:PRO:HD2	2.48	0.44
2:B:501:ASN:OD1	2:B:522:ASN:HA	2.18	0.44
2:N:528:TRP:HB2	2:N:529:PHE:H	1.49	0.44
3:C:832:LEU:O	3:C:832:LEU:HG	2.18	0.44
3:O:665:ILE:CD1	3:O:673:ALA:HB2	2.48	0.44
1:A:70:GLN:OE1	2:B:393:CYS:SG	2.74	0.44
2:B:418:ILE:CG1	2:B:432:VAL:CG2	2.96	0.44

*Continued on next page...*

*Continued from previous page...*

Atom-1	Atom-2	Interatomic distance (Å)	Clash overlap (Å)
2:B:459:ILE:HG13	2:B:460:PRO:HD2	2.00	0.44
3:C:761:THR:O	3:C:765:LEU:CD2	2.58	0.44
3:C:842:LEU:HD23	3:C:842:LEU:HA	1.78	0.44
5:R:214:CYS:SG	5:R:214:CYS:OXT	2.76	0.44
2:N:472:THR:O	2:N:474:GLN:HG3	2.17	0.44
3:C:577:ARG:NH1	3:C:580:THR:HG21	2.32	0.44
3:C:746:LEU:HD13	3:C:746:LEU:HA	1.76	0.44
3:O:577:ARG:NH1	3:O:580:THR:HG21	2.32	0.44
3:O:736:PHE:CE1	3:O:827:GLN:CG	2.98	0.44
1:A:90:LEU:CD2	1:M:89:GLN:HA	2.41	0.44
1:A:121:SER:CA	1:M:60:ASN:CB	2.78	0.44
2:B:478:ILE:HA	2:B:479:PRO:HD2	1.61	0.44
1:A:142:ILE:HG21	1:A:155:ILE:CD1	2.47	0.44
1:A:162:ASN:O	1:A:163:HIS:HB2	2.16	0.44
2:B:439:GLU:HA	2:B:461:ALA:H	1.83	0.44
2:B:472:THR:O	2:B:474:GLN:HG3	2.17	0.44
2:B:536:LEU:HD23	2:B:536:LEU:HA	1.71	0.44
3:C:672:LEU:HD12	3:C:672:LEU:HA	1.83	0.44
3:C:837:GLU:HB3	3:O:840:PHE:N	2.33	0.44
3:O:740:ARG:HH12	3:O:741:LYS:HE2	1.82	0.44
6:H:160:SER:O	6:H:163:VAL:HG13	2.17	0.44
2:B:527:PRO:CG	2:B:528:TRP:CD1	3.01	0.43
2:B:568:ASN:CB	2:N:564:SER:O	2.66	0.43
2:N:459:ILE:HG13	2:N:460:PRO:HD2	2.00	0.43
2:N:505:PHE:HE1	2:N:541:SER:HG	1.63	0.43
2:N:537:ALA:O	2:N:541:SER:HB2	2.18	0.43
5:R:61:ARG:HB2	5:R:76:SER:O	2.18	0.43
1:M:78:LYS:CE	2:N:388:LYS:NZ	2.70	0.43
2:B:395:ALA:O	2:B:399:VAL:HG12	2.17	0.43
2:N:418:ILE:CG1	2:N:432:VAL:CG2	2.96	0.43
2:N:443:LYS:O	2:N:455:TYR:O	2.36	0.43
2:N:508:LYS:CA	2:N:514:VAL:HA	2.48	0.43
3:O:807:ARG:HG3	3:O:807:ARG:NH1	2.32	0.43
1:A:64:GLU:N	2:N:387:GLN:HE22	2.16	0.43
1:A:89:GLN:HA	1:M:90:LEU:CD2	2.41	0.43
1:A:99:PHE:HD2	1:A:110:VAL:HG13	1.82	0.43
1:A:119:PRO:C	1:M:61:ILE:CA	2.85	0.43
2:N:476:LEU:HD23	2:N:478:ILE:CD1	2.48	0.43
3:C:818:VAL:HG12	3:C:819:GLY:N	2.33	0.43
3:C:825:CYS:O	3:C:826:THR:C	2.57	0.43
2:N:409:ASP:HB3	2:N:412:VAL:HB	2.00	0.43

*Continued on next page...*

*Continued from previous page...*

Atom-1	Atom-2	Interatomic distance (Å)	Clash overlap (Å)
2:N:501:ASN:OD1	2:N:522:ASN:HA	2.18	0.43
3:C:840:PHE:N	3:O:837:GLU:HB3	2.33	0.43
1:A:120:THR:HG1	1:M:60:ASN:H	1.66	0.43
2:B:389:LEU:HD23	2:B:389:LEU:HA	1.60	0.43
2:B:508:LYS:CA	2:B:514:VAL:HA	2.48	0.43
2:B:443:LYS:O	2:B:455:TYR:O	2.36	0.43
2:B:501:ASN:HB2	2:B:529:PHE:CE1	2.54	0.43
2:N:398:GLN:NE2	2:N:401:LYS:HD3	2.34	0.43
2:N:501:ASN:HB2	2:N:529:PHE:CE1	2.54	0.43
3:O:832:LEU:O	3:O:832:LEU:HG	2.18	0.43
2:B:417:ILE:CD1	2:B:548:ILE:CD1	2.97	0.43
2:B:425:SER:O	2:B:426:ASN:HB2	2.17	0.43
3:C:578:MET:HE2	3:C:623:GLN:HA	1.99	0.43
5:L:61:ARG:HB2	5:L:76:SER:O	2.18	0.43
6:H:213:ARG:HB3	6:H:214:ASP:H	1.64	0.43
2:B:537:ALA:O	2:B:541:SER:HB2	2.18	0.43
2:N:421:ALA:HB2	2:N:540:PHE:HE2	1.83	0.43
5:R:181:LEU:HD22	5:R:185:GLU:HG2	2.01	0.43
2:N:399:VAL:CG2	2:N:540:PHE:HE1	2.24	0.43
3:O:818:VAL:HG12	3:O:819:GLY:N	2.33	0.43
5:L:181:LEU:HD22	5:L:185:GLU:HG2	2.01	0.43
6:H:138:LEU:HD12	6:H:138:LEU:N	2.34	0.43
3:C:661:ASN:O	3:C:665:ILE:HG23	2.19	0.43
3:O:661:ASN:O	3:O:665:ILE:HG23	2.19	0.43
3:O:813:LEU:HB3	3:O:814:PRO:CD	2.45	0.43
2:B:409:ASP:HB3	2:B:412:VAL:HB	1.99	0.42
2:B:564:SER:HB3	2:N:565:HIS:HB2	2.00	0.42
2:B:568:ASN:CG	2:N:567:ALA:CB	2.62	0.42
2:N:504:CYS:SG	2:N:519:GLU:HB3	2.59	0.42
2:B:443:LYS:HA	2:B:457:ILE:H	1.84	0.42
2:N:417:ILE:CD1	2:N:548:ILE:CD1	2.97	0.42
2:N:439:GLU:N	2:N:461:ALA:HB2	2.35	0.42
3:C:665:ILE:CD1	3:C:673:ALA:HB2	2.48	0.42
3:C:699:GLN:HB3	3:C:702:SER:HB3	2.01	0.42
3:C:740:ARG:HH12	3:C:741:LYS:HE2	1.82	0.42
3:O:839:CYS:C	3:O:841:PRO:HD2	2.39	0.42
3:O:842:LEU:HD23	3:O:842:LEU:HA	1.78	0.42
2:B:476:LEU:CD2	2:B:478:ILE:CD1	2.98	0.42
2:N:476:LEU:CD2	2:N:478:ILE:CD1	2.98	0.42
2:N:422:ARG:HD3	2:N:429:ILE:HA	2.02	0.42
5:L:36:TYR:CZ	6:H:100(C):PHE:HB2	2.54	0.42

*Continued on next page...*

Continued from previous page...

Atom-1	Atom-2	Interatomic distance (Å)	Clash overlap (Å)
5:R:36:TYR:CZ	6:Q:100(C):PHE:HB2	2.54	0.42
5:R:210:ASN:HB2	5:R:213:GLU:HG2	2.02	0.42
2:B:398:GLN:NE2	2:B:401:LYS:HD3	2.34	0.42
2:B:439:GLU:N	2:B:461:ALA:HB2	2.35	0.42
2:N:397:LEU:HD12	2:N:397:LEU:HA	1.92	0.42
3:C:839:CYS:C	3:C:841:PRO:HD2	2.39	0.42
4:D:71:GLU:N	4:D:71:GLU:OE1	2.53	0.42
5:L:210:ASN:HB2	5:L:213:GLU:HG2	2.02	0.42
2:B:504:CYS:SG	2:B:519:GLU:HB3	2.59	0.42
2:N:439:GLU:HA	2:N:461:ALA:H	1.83	0.42
2:N:567:ALA:HB2	3:O:555:LYS:CB	2.50	0.42
3:C:768:ILE:HG13	3:C:768:ILE:O	2.19	0.42
3:O:768:ILE:O	3:O:768:ILE:HG13	2.19	0.42
3:O:815:LYS:HE3	3:O:815:LYS:H	1.85	0.42
2:B:563:ARG:CB	3:C:555:LYS:CD	2.84	0.42
3:C:654:ASP:O	3:C:657:HIS:HB2	2.20	0.42
3:C:814:PRO:HD2	3:C:815:LYS:CE	2.48	0.42
3:O:635:GLN:HG3	3:O:643:ILE:HD13	2.02	0.42
3:O:817:GLN:OE1	3:O:817:GLN:HA	2.20	0.42
4:P:71:GLU:N	4:P:71:GLU:OE1	2.53	0.42
5:L:115:VAL:O	5:L:207:LYS:HE3	2.20	0.42
3:O:654:ASP:O	3:O:657:HIS:HB2	2.20	0.42
3:O:699:GLN:HB3	3:O:702:SER:HB3	2.01	0.42
6:Q:4:LEU:HD12	6:Q:4:LEU:HA	1.89	0.42
2:B:421:ALA:HB2	2:B:540:PHE:HE2	1.83	0.42
2:B:563:ARG:C	3:C:555:LYS:CE	2.87	0.42
3:C:591:LYS:HB2	3:C:594:VAL:HG23	2.02	0.42
3:O:591:LYS:HB2	3:O:594:VAL:HG23	2.02	0.42
6:H:121:VAL:HG12	6:H:208:LYS:HG3	2.02	0.42
1:A:72:GLU:OE1	2:B:388:LYS:HE3	2.19	0.41
1:M:67:THR:CG2	2:B:387:GLN:HE21	2.32	0.41
1:M:142:ILE:HB	1:M:179:MET:HE1	2.02	0.41
2:B:422:ARG:HD3	2:B:429:ILE:HA	2.01	0.41
3:O:825:CYS:O	3:O:826:THR:C	2.57	0.41
4:P:78:LEU:HD23	4:P:78:LEU:HA	1.76	0.41
1:A:86:ARG:CZ	1:M:86:ARG:NH2	2.83	0.41
2:B:508:LYS:H	2:B:515:ILE:H	1.68	0.41
2:N:473:GLY:O	2:N:508:LYS:NZ	2.47	0.41
2:N:563:ARG:HG2	3:O:555:LYS:HZ3	1.72	0.41
3:C:765:LEU:H	3:C:765:LEU:CD2	2.33	0.41
3:C:817:GLN:OE1	3:C:817:GLN:HA	2.20	0.41

Continued on next page...



*Continued from previous page...*

Atom-1	Atom-2	Interatomic distance (Å)	Clash overlap (Å)
3:O:598:TRP:HA	3:O:698:ASN:OD1	2.20	0.41
5:R:54:ARG:CG	5:R:58:VAL:HG22	2.50	0.41
2:B:567:ALA:CB	2:N:568:ASN:OD1	2.67	0.41
2:N:443:LYS:HA	2:N:457:ILE:H	1.84	0.41
3:C:635:GLN:HG3	3:C:643:ILE:HD13	2.02	0.41
3:O:800:GLN:HA	3:O:801:PRO:HD3	1.82	0.41
5:R:115:VAL:O	5:R:207:LYS:HE3	2.20	0.41
6:Q:138:LEU:N	6:Q:138:LEU:HD12	2.34	0.41
1:A:142:ILE:HG13	1:A:164:PHE:HA	2.03	0.41
1:A:182:ILE:HG21	1:A:217:LEU:HD13	2.02	0.41
1:M:182:ILE:HG21	1:M:217:LEU:HD13	2.02	0.41
2:N:499:THR:CG2	2:N:500:ARG:N	2.63	0.41
2:N:527:PRO:CG	2:N:528:TRP:CD1	3.01	0.41
1:A:86:ARG:CZ	1:M:86:ARG:CZ	2.99	0.41
1:M:72:GLU:HG3	2:N:389:LEU:HD22	2.02	0.41
1:M:142:ILE:HG13	1:M:164:PHE:HA	2.03	0.41
2:N:389:LEU:HD23	2:N:389:LEU:HA	1.60	0.41
2:N:508:LYS:H	2:N:515:ILE:H	1.68	0.41
2:N:511:ASN:N	2:N:511:ASN:ND2	2.69	0.41
3:C:658:ARG:H	3:C:658:ARG:HG2	1.54	0.41
3:C:772:TRP:N	3:C:773:PRO:CD	2.83	0.41
3:O:745:ASN:O	3:O:751:GLN:OE1	2.39	0.41
5:L:166:GLN:HB2	5:L:173:TYR:CE2	2.56	0.41
6:H:67:ALA:HB1	6:H:80:LEU:HD11	2.02	0.41
1:A:70:GLN:CB	2:B:389:LEU:CD2	2.81	0.41
1:M:118:THR:HG23	1:M:119:PRO:CD	2.51	0.41
2:B:476:LEU:HD23	2:B:478:ILE:CD1	2.48	0.41
2:B:569:GLU:OE2	3:O:551:ALA:HB3	2.21	0.41
3:C:575:THR:O	3:C:578:MET:HB2	2.21	0.41
3:C:795:THR:HG23	6:H:53:GLU:CD	2.10	0.41
6:Q:213:ARG:HB3	6:Q:214:ASP:H	1.64	0.41
1:A:118:THR:HG23	1:A:119:PRO:CD	2.51	0.41
2:B:511:ASN:N	2:B:511:ASN:ND2	2.69	0.41
3:C:815:LYS:HE3	3:C:815:LYS:H	1.85	0.41
6:H:4:LEU:HD12	6:H:4:LEU:HA	1.89	0.41
2:B:441:VAL:CG1	2:B:443:LYS:HD3	2.51	0.41
3:C:569:LEU:HD22	3:C:569:LEU:HA	1.81	0.41
3:O:575:THR:O	3:O:578:MET:HB2	2.21	0.41
3:O:765:LEU:H	3:O:765:LEU:CD2	2.33	0.41
6:Q:121:VAL:HG12	6:Q:208:LYS:HG3	2.02	0.41
1:A:142:ILE:HB	1:A:179:MET:HE1	2.02	0.41

*Continued on next page...*

Continued from previous page...

Atom-1	Atom-2	Interatomic distance (Å)	Clash overlap (Å)
1:A:61:ILE:CA	1:M:119:PRO:C	2.85	0.40
2:N:422:ARG:HG3	2:N:427:ALA:HB3	2.03	0.40
3:C:736:PHE:CE1	3:C:827:GLN:CG	2.98	0.40
1:A:213:PHE:CZ	1:A:217:LEU:HD11	2.56	0.40
2:B:459:ILE:HD12	2:B:460:PRO:HD2	2.03	0.40
2:N:478:ILE:HA	2:N:479:PRO:HD2	1.61	0.40
3:C:765:LEU:HD22	3:C:765:LEU:N	2.36	0.40
5:L:122:SER:O	5:L:126:THR:HG23	2.21	0.40
6:H:128:SER:H	6:H:213:ARG:NH2	2.18	0.40
2:B:418:ILE:CD1	2:B:432:VAL:CG2	2.98	0.40
2:N:428:GLU:HA	2:N:524:ILE:HD11	2.04	0.40
2:N:441:VAL:CG1	2:N:443:LYS:HD3	2.51	0.40
3:C:598:TRP:HA	3:C:698:ASN:OD1	2.20	0.40
3:C:678:HIS:HD2	4:D:71:GLU:OE2	2.03	0.40
3:C:708:GLU:O	3:C:709:TYR:C	2.60	0.40
3:C:826:THR:O	3:C:827:GLN:C	2.60	0.40
2:N:459:ILE:HD12	2:N:460:PRO:HD2	2.03	0.40
3:C:639:THR:O	3:C:643:ILE:HG13	2.21	0.40
3:O:678:HIS:HD2	4:P:71:GLU:OE2	2.03	0.40
3:O:746:LEU:HD13	3:O:746:LEU:HA	1.76	0.40
3:O:772:TRP:N	3:O:773:PRO:CD	2.83	0.40
5:R:166:GLN:HB2	5:R:173:TYR:CE2	2.56	0.40
6:Q:177:LEU:HD12	6:Q:177:LEU:C	2.42	0.40
2:B:393:CYS:O	2:B:397:LEU:N	2.34	0.40
3:O:673:ALA:HA	3:O:680:ILE:HD13	2.04	0.40

There are no symmetry-related clashes.

## 5.3 Torsion angles [i](#)

### 5.3.1 Protein backbone [i](#)

In the following table, the Percentiles column shows the percent Ramachandran outliers of the chain as a percentile score with respect to all PDB entries followed by that with respect to all EM entries.

The Analysed column shows the number of residues for which the backbone conformation was analysed, and the total number of residues.

Mol	Chain	Analysed	Favoured	Allowed	Outliers	Percentiles
1	A	169/180 (94%)	157 (93%)	7 (4%)	5 (3%)	<b>4</b> 28

Continued on next page...

Continued from previous page...

Mol	Chain	Analysed	Favoured	Allowed	Outliers	Percentiles	
1	M	169/180 (94%)	157 (93%)	7 (4%)	5 (3%)	4	28
2	B	155/185 (84%)	126 (81%)	18 (12%)	11 (7%)	1	14
2	N	155/185 (84%)	126 (81%)	18 (12%)	11 (7%)	1	14
3	C	326/330 (99%)	295 (90%)	30 (9%)	1 (0%)	41	77
3	O	326/330 (99%)	295 (90%)	30 (9%)	1 (0%)	41	77
4	D	15/18 (83%)	15 (100%)	0	0	100	100
4	P	15/18 (83%)	15 (100%)	0	0	100	100
5	L	212/214 (99%)	208 (98%)	4 (2%)	0	100	100
5	R	212/214 (99%)	208 (98%)	4 (2%)	0	100	100
6	H	219/221 (99%)	209 (95%)	3 (1%)	7 (3%)	4	26
6	Q	219/221 (99%)	209 (95%)	3 (1%)	7 (3%)	4	26
All	All	2192/2296 (96%)	2020 (92%)	124 (6%)	48 (2%)	10	35

All (48) Ramachandran outliers are listed below:

Mol	Chain	Res	Type
2	B	475	ILE
2	B	499	THR
2	B	500	ARG
2	B	508	LYS
2	B	512	GLN
2	N	475	ILE
2	N	499	THR
2	N	500	ARG
2	N	508	LYS
2	N	512	GLN
6	H	132	THR
6	H	213	ARG
6	Q	132	THR
6	Q	213	ARG
1	A	71	ASP
1	A	73	ALA
1	A	163	HIS
1	M	71	ASP
1	M	73	ALA
1	M	163	HIS
2	B	522	ASN
2	B	534	GLU

Continued on next page...

*Continued from previous page...*

Mol	Chain	Res	Type
2	N	522	ASN
2	N	534	GLU
1	A	56	LEU
1	M	56	LEU
2	B	437	GLN
2	N	437	GLN
6	H	100(A)	GLY
6	H	134	SER
6	H	135	MET
6	Q	100(A)	GLY
6	Q	134	SER
6	Q	135	MET
3	C	699	GLN
3	O	699	GLN
6	H	172	SER
6	H	173	ASP
6	Q	172	SER
6	Q	173	ASP
1	A	198	ASN
1	M	198	ASN
2	B	479	PRO
2	N	479	PRO
2	B	426	ASN
2	B	528	TRP
2	N	426	ASN
2	N	528	TRP

### 5.3.2 Protein sidechains [i](#)

In the following table, the Percentiles column shows the percent sidechain outliers of the chain as a percentile score with respect to all PDB entries followed by that with respect to all EM entries.

The Analysed column shows the number of residues for which the sidechain conformation was analysed, and the total number of residues.

Mol	Chain	Analysed	Rotameric	Outliers	Percentiles
1	A	155/164 (94%)	150 (97%)	5 (3%)	39 61
1	M	155/164 (94%)	150 (97%)	5 (3%)	39 61
2	B	140/159 (88%)	95 (68%)	45 (32%)	0 2
2	N	140/159 (88%)	95 (68%)	45 (32%)	0 2

*Continued on next page...*

*Continued from previous page...*

Mol	Chain	Analysed	Rotameric	Outliers	Percentiles	
3	C	294/295 (100%)	265 (90%)	29 (10%)	8	26
3	O	294/295 (100%)	265 (90%)	29 (10%)	8	26
4	D	14/15 (93%)	14 (100%)	0	100	100
4	P	14/15 (93%)	14 (100%)	0	100	100
5	L	189/189 (100%)	176 (93%)	13 (7%)	15	40
5	R	189/189 (100%)	176 (93%)	13 (7%)	15	40
6	H	189/189 (100%)	179 (95%)	10 (5%)	22	47
6	Q	189/189 (100%)	179 (95%)	10 (5%)	22	47
All	All	1962/2022 (97%)	1758 (90%)	204 (10%)	10	24

All (204) residues with a non-rotameric sidechain are listed below:

Mol	Chain	Res	Type
1	A	55	ARG
1	A	110	VAL
1	A	151	LYS
1	A	186	GLN
1	A	217	LEU
1	M	55	ARG
1	M	110	VAL
1	M	151	LYS
1	M	186	GLN
1	M	217	LEU
2	B	388	LYS
2	B	390	LYS
2	B	394	GLN
2	B	397	LEU
2	B	399	VAL
2	B	401	LYS
2	B	407	LEU
2	B	413	LEU
2	B	414	LEU
2	B	415	GLN
2	B	416	GLU
2	B	424	LEU
2	B	426	ASN
2	B	429	ILE
2	B	432	VAL
2	B	435	LEU

*Continued on next page...*

*Continued from previous page...*

<b>Mol</b>	<b>Chain</b>	<b>Res</b>	<b>Type</b>
2	B	437	GLN
2	B	455	TYR
2	B	458	ARG
2	B	459	ILE
2	B	463	GLN
2	B	471	THR
2	B	472	THR
2	B	475	ILE
2	B	476	LEU
2	B	478	ILE
2	B	500	ARG
2	B	501	ASN
2	B	512	GLN
2	B	515	ILE
2	B	528	TRP
2	B	532	PHE
2	B	534	GLU
2	B	535	ASP
2	B	536	LEU
2	B	541	SER
2	B	548	ILE
2	B	553	LEU
2	B	555	LYS
2	B	557	VAL
2	B	561	GLN
2	B	564	SER
2	B	565	HIS
2	B	566	LEU
2	B	570	MET
2	N	388	LYS
2	N	390	LYS
2	N	394	GLN
2	N	397	LEU
2	N	399	VAL
2	N	401	LYS
2	N	407	LEU
2	N	413	LEU
2	N	414	LEU
2	N	415	GLN
2	N	416	GLU
2	N	424	LEU
2	N	426	ASN

*Continued on next page...*

*Continued from previous page...*

<b>Mol</b>	<b>Chain</b>	<b>Res</b>	<b>Type</b>
2	N	429	ILE
2	N	432	VAL
2	N	435	LEU
2	N	437	GLN
2	N	455	TYR
2	N	458	ARG
2	N	459	ILE
2	N	463	GLN
2	N	471	THR
2	N	472	THR
2	N	475	ILE
2	N	476	LEU
2	N	478	ILE
2	N	500	ARG
2	N	501	ASN
2	N	512	GLN
2	N	515	ILE
2	N	528	TRP
2	N	532	PHE
2	N	534	GLU
2	N	535	ASP
2	N	536	LEU
2	N	541	SER
2	N	548	ILE
2	N	553	LEU
2	N	555	LYS
2	N	557	VAL
2	N	561	GLN
2	N	564	SER
2	N	565	HIS
2	N	566	LEU
2	N	570	MET
3	C	534	MET
3	C	547	VAL
3	C	555	LYS
3	C	557	THR
3	C	560	SER
3	C	565	GLU
3	C	569	LEU
3	C	600	LEU
3	C	608	LYS
3	C	638	LEU

*Continued on next page...*

*Continued from previous page...*

<b>Mol</b>	<b>Chain</b>	<b>Res</b>	<b>Type</b>
3	C	652	SER
3	C	658	ARG
3	C	660	VAL
3	C	665	ILE
3	C	694	ASN
3	C	706	ILE
3	C	725	LEU
3	C	752	LYS
3	C	753	GLU
3	C	765	LEU
3	C	788	GLU
3	C	809	LYS
3	C	810	ARG
3	C	811	ASP
3	C	815	LYS
3	C	818	VAL
3	C	826	THR
3	C	838	ASP
3	C	848	LYS
3	O	534	MET
3	O	547	VAL
3	O	555	LYS
3	O	557	THR
3	O	560	SER
3	O	565	GLU
3	O	569	LEU
3	O	600	LEU
3	O	608	LYS
3	O	638	LEU
3	O	652	SER
3	O	658	ARG
3	O	660	VAL
3	O	665	ILE
3	O	694	ASN
3	O	706	ILE
3	O	725	LEU
3	O	752	LYS
3	O	753	GLU
3	O	765	LEU
3	O	788	GLU
3	O	809	LYS
3	O	810	ARG

*Continued on next page...*



*Continued from previous page...*

<b>Mol</b>	<b>Chain</b>	<b>Res</b>	<b>Type</b>
3	O	811	ASP
3	O	815	LYS
3	O	818	VAL
3	O	826	THR
3	O	838	ASP
3	O	848	LYS
5	L	19	VAL
5	L	56	THR
5	L	58	VAL
5	L	104	LEU
5	L	107	LYS
5	L	133	VAL
5	L	142	LYS
5	L	145	ASN
5	L	159	VAL
5	L	160	LEU
5	L	178	THR
5	L	197	THR
5	L	212	ASN
6	H	4	LEU
6	H	40	ARG
6	H	64	GLN
6	H	116	THR
6	H	124	LEU
6	H	141	LEU
6	H	149	PRO
6	H	152	VAL
6	H	163	VAL
6	H	173	ASP
5	R	19	VAL
5	R	56	THR
5	R	58	VAL
5	R	104	LEU
5	R	107	LYS
5	R	133	VAL
5	R	142	LYS
5	R	145	ASN
5	R	159	VAL
5	R	160	LEU
5	R	178	THR
5	R	197	THR
5	R	212	ASN

*Continued on next page...*

*Continued from previous page...*

Mol	Chain	Res	Type
6	Q	4	LEU
6	Q	40	ARG
6	Q	64	GLN
6	Q	116	THR
6	Q	124	LEU
6	Q	141	LEU
6	Q	149	PRO
6	Q	152	VAL
6	Q	163	VAL
6	Q	173	ASP

Sometimes sidechains can be flipped to improve hydrogen bonding and reduce clashes. All (30) such sidechains are listed below:

Mol	Chain	Res	Type
1	A	60	ASN
1	M	60	ASN
2	B	387	GLN
2	B	398	GLN
2	B	406	HIS
2	B	437	GLN
2	B	463	GLN
2	B	511	ASN
2	N	387	GLN
2	N	398	GLN
2	N	406	HIS
2	N	437	GLN
2	N	463	GLN
2	N	511	ASN
3	C	694	ASN
3	C	808	ASN
3	C	834	HIS
3	O	694	ASN
3	O	808	ASN
3	O	834	HIS
5	L	137	ASN
5	L	156	GLN
5	L	212	ASN
6	H	64	GLN
6	H	81	GLN
5	R	137	ASN
5	R	156	GLN
5	R	212	ASN

*Continued on next page...*

*Continued from previous page...*

Mol	Chain	Res	Type
6	Q	64	GLN
6	Q	81	GLN

### 5.3.3 RNA [i](#)

There are no RNA molecules in this entry.

### 5.4 Non-standard residues in protein, DNA, RNA chains [i](#)

There are no non-standard protein/DNA/RNA residues in this entry.

### 5.5 Carbohydrates [i](#)

There are no monosaccharides in this entry.

### 5.6 Ligand geometry [i](#)

4 ligands are modelled in this entry.

In the following table, the Counts columns list the number of bonds (or angles) for which Mogul statistics could be retrieved, the number of bonds (or angles) that are observed in the model and the number of bonds (or angles) that are defined in the Chemical Component Dictionary. The Link column lists molecule types, if any, to which the group is linked. The Z score for a bond length (or angle) is the number of standard deviations the observed value is removed from the expected value. A bond length (or angle) with  $|Z| > 2$  is considered an outlier worth inspection. RMSZ is the root-mean-square of all Z scores of the bond lengths (or angles).

Mol	Type	Chain	Res	Link	Bond lengths			Bond angles		
					Counts	RMSZ	# Z  > 2	Counts	RMSZ	# Z  > 2
7	IBM	C	902	-	8,17,17	1.80	2 (25%)	10,25,25	2.14	2 (20%)
7	IBM	O	902	-	8,17,17	1.80	2 (25%)	10,25,25	2.14	2 (20%)
7	IBM	O	901	-	8,17,17	1.84	2 (25%)	10,25,25	1.74	2 (20%)
7	IBM	C	901	-	8,17,17	1.84	2 (25%)	10,25,25	1.74	2 (20%)

In the following table, the Chirals column lists the number of chiral outliers, the number of chiral centers analysed, the number of these observed in the model and the number defined in the Chemical Component Dictionary. Similar counts are reported in the Torsion and Rings columns. '-' means no outliers of that kind were identified.

Mol	Type	Chain	Res	Link	Chirals	Torsions	Rings
7	IBM	C	902	-	-	2/4/4/4	0/2/2/2
7	IBM	O	902	-	-	2/4/4/4	0/2/2/2
7	IBM	O	901	-	-	2/4/4/4	0/2/2/2
7	IBM	C	901	-	-	2/4/4/4	0/2/2/2

All (8) bond length outliers are listed below:

Mol	Chain	Res	Type	Atoms	Z	Observed(Å)	Ideal(Å)
7	C	902	IBM	C5-C6	4.34	1.48	1.41
7	O	902	IBM	C5-C6	4.34	1.48	1.41
7	C	901	IBM	C5-C6	4.02	1.47	1.41
7	O	901	IBM	C5-C6	4.02	1.47	1.41
7	C	902	IBM	C6-N1	-2.10	1.35	1.38
7	O	902	IBM	C6-N1	-2.10	1.35	1.38
7	C	901	IBM	C6-N1	-2.06	1.35	1.38
7	O	901	IBM	C6-N1	-2.06	1.35	1.38

All (8) bond angle outliers are listed below:

Mol	Chain	Res	Type	Atoms	Z	Observed(°)	Ideal(°)
7	C	902	IBM	C4-C5-C6	-5.41	116.48	119.96
7	O	902	IBM	C4-C5-C6	-5.41	116.48	119.96
7	C	901	IBM	C4-C5-C6	-4.62	116.99	119.96
7	O	901	IBM	C4-C5-C6	-4.62	116.99	119.96
7	C	902	IBM	C11-N3-C4	3.47	121.51	118.41
7	O	902	IBM	C11-N3-C4	3.47	121.51	118.41
7	C	901	IBM	C4-C5-N7	-2.46	106.83	109.40
7	O	901	IBM	C4-C5-N7	-2.46	106.83	109.40

There are no chirality outliers.

All (8) torsion outliers are listed below:

Mol	Chain	Res	Type	Atoms
7	C	901	IBM	C12-C11-N3-C4
7	C	901	IBM	C12-C11-N3-C2
7	C	902	IBM	N3-C11-C12-C13
7	C	902	IBM	N3-C11-C12-C14
7	O	901	IBM	C12-C11-N3-C4
7	O	901	IBM	C12-C11-N3-C2
7	O	902	IBM	N3-C11-C12-C13
7	O	902	IBM	N3-C11-C12-C14

There are no ring outliers.

4 monomers are involved in 8 short contacts:

Mol	Chain	Res	Type	Clashes	Symm-Clashes
7	C	902	IBM	3	0
7	O	902	IBM	3	0
7	O	901	IBM	1	0
7	C	901	IBM	1	0

## 5.7 Other polymers [i](#)

There are no such residues in this entry.

## 5.8 Polymer linkage issues [i](#)

There are no chain breaks in this entry.

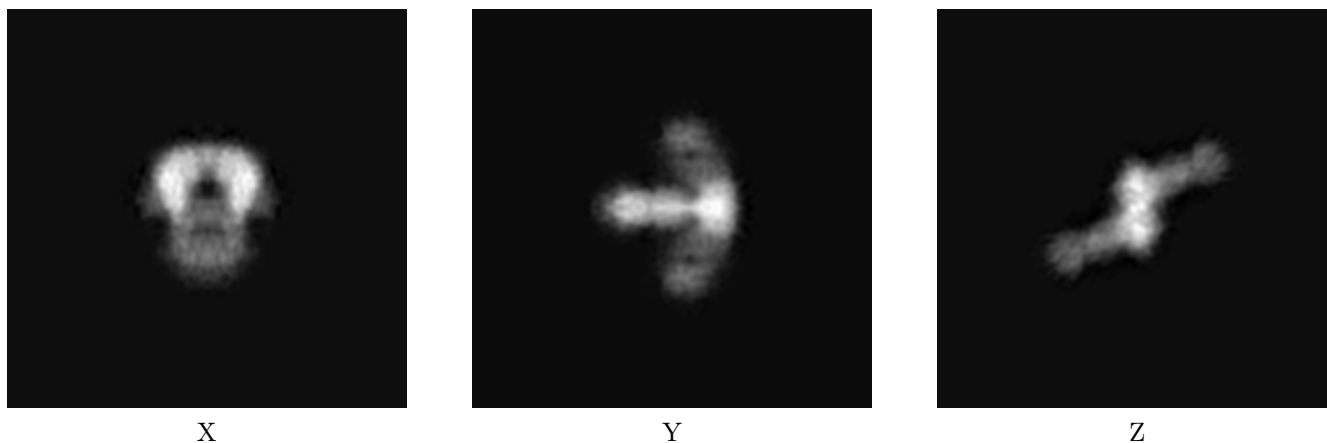
## 6 Map visualisation [i](#)

This section contains visualisations of the EMDB entry EMD-6258. These allow visual inspection of the internal detail of the map and identification of artifacts.

No raw map or half-maps were deposited for this entry and therefore no images, graphs, etc. pertaining to the raw map can be shown.

### 6.1 Orthogonal projections [i](#)

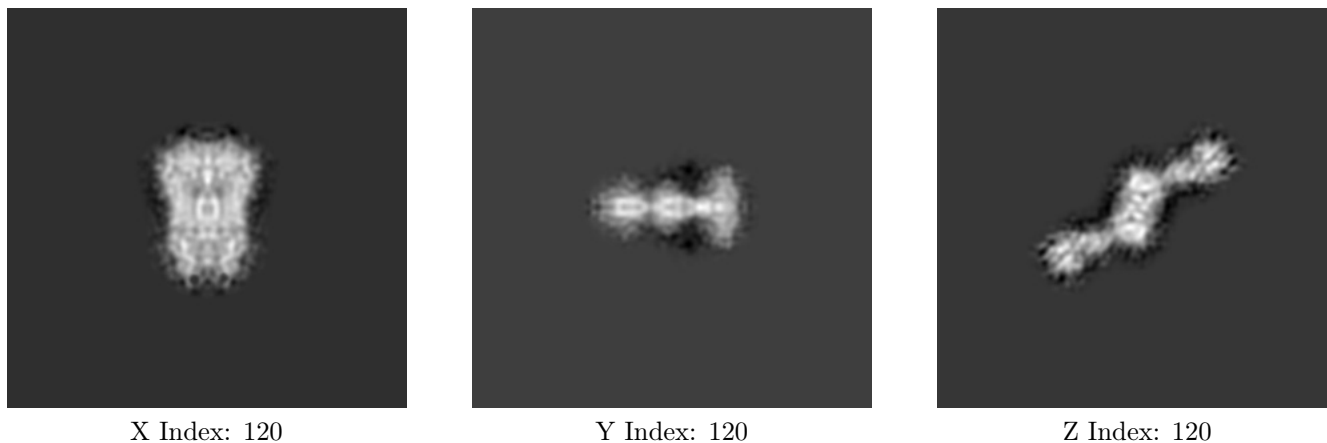
#### 6.1.1 Primary map



The images above show the map projected in three orthogonal directions.

### 6.2 Central slices [i](#)

#### 6.2.1 Primary map



The images above show central slices of the map in three orthogonal directions.

## 6.3 Largest variance slices [i](#)

### 6.3.1 Primary map



X Index: 120



Y Index: 102

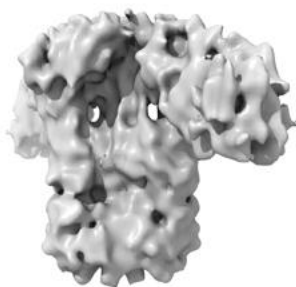


Z Index: 139

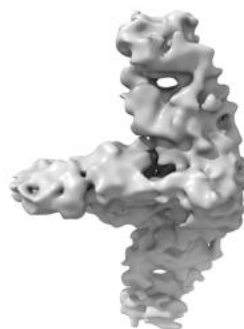
The images above show the largest variance slices of the map in three orthogonal directions.

## 6.4 Orthogonal surface views [i](#)

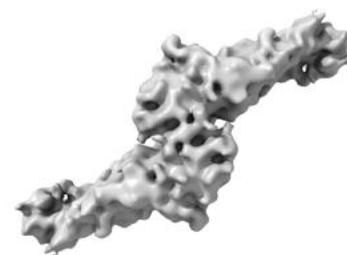
### 6.4.1 Primary map



X



Y



Z

The images above show the 3D surface view of the map at the recommended contour level 1.0. These images, in conjunction with the slice images, may facilitate assessment of whether an appropriate contour level has been provided.

## 6.5 Mask visualisation

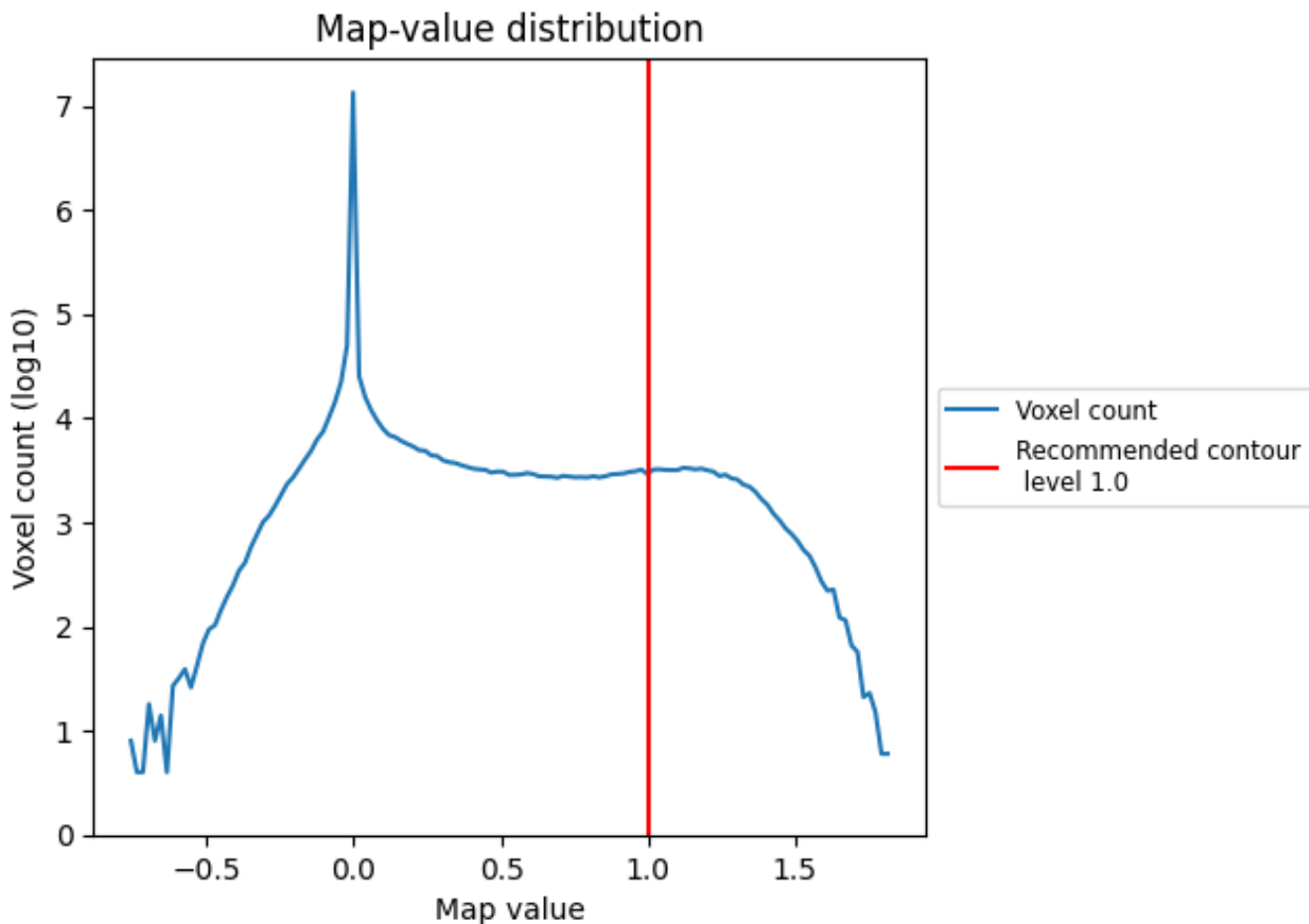
This section was not generated. No masks/segmentation were deposited.



## 7 Map analysis [i](#)

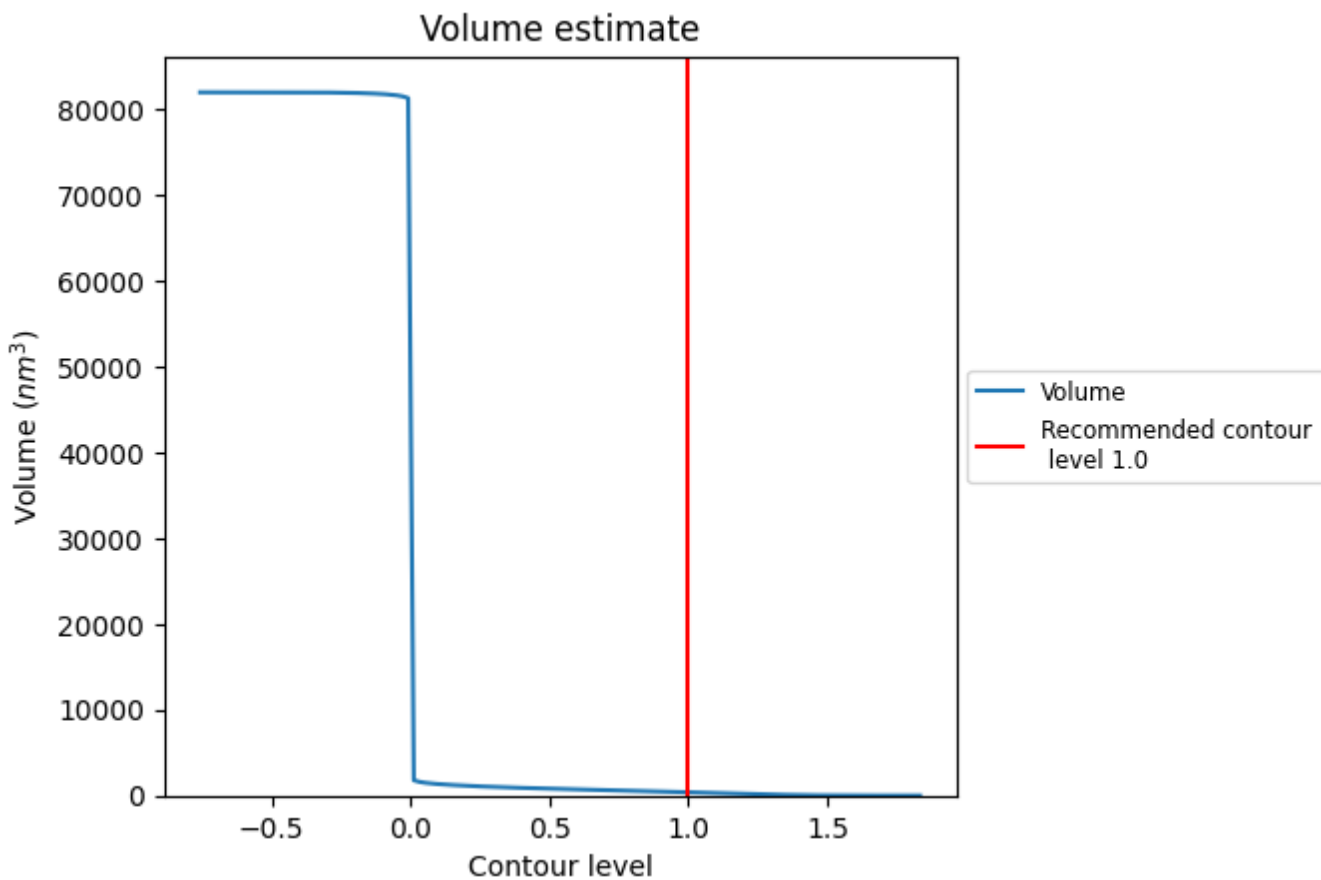
This section contains the results of statistical analysis of the map.

### 7.1 Map-value distribution [i](#)



The map-value distribution is plotted in 128 intervals along the x-axis. The y-axis is logarithmic. A spike in this graph at zero usually indicates that the volume has been masked.

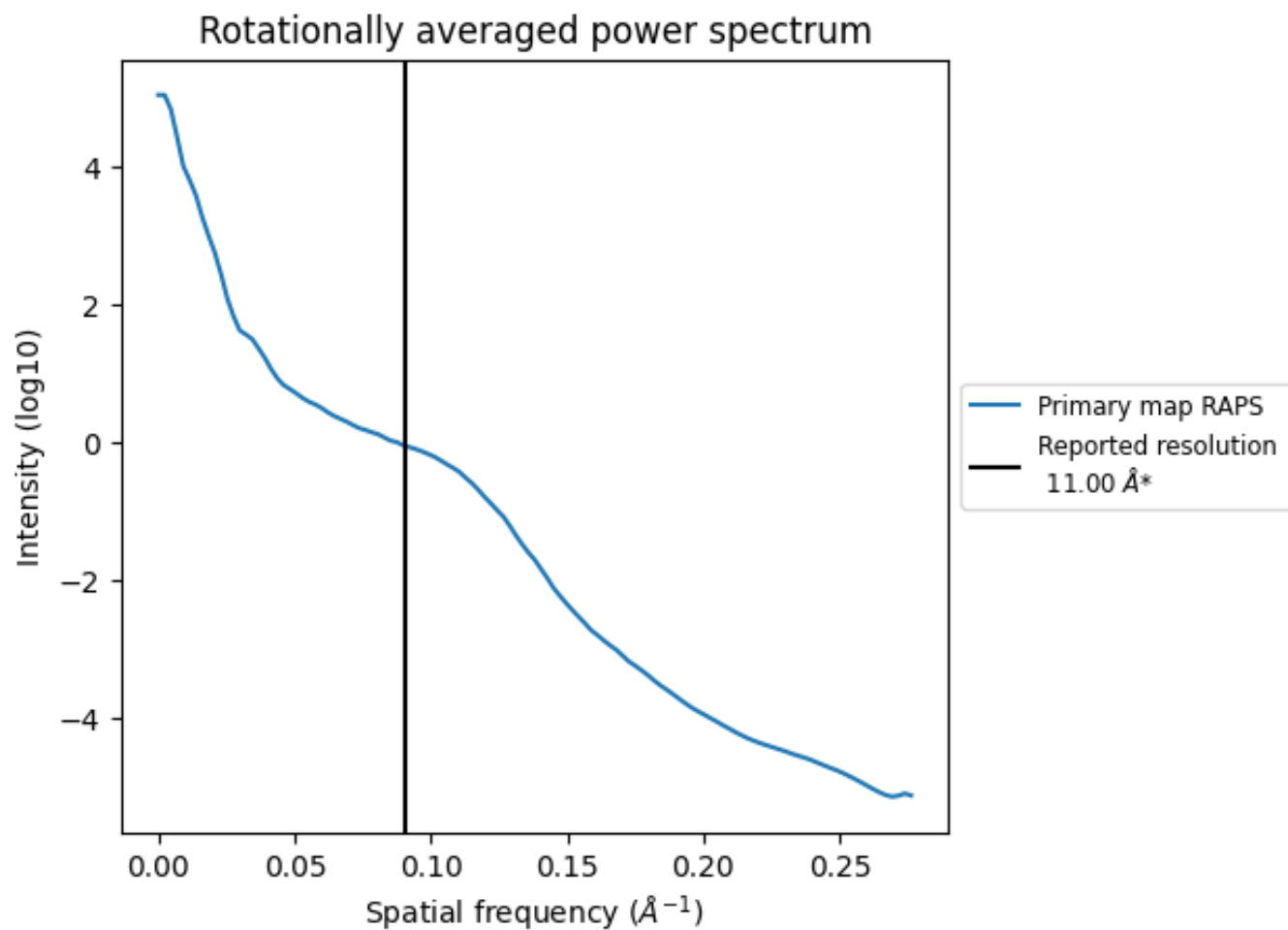
## 7.2 Volume estimate [i](#)



The volume at the recommended contour level is 390 nm<sup>3</sup>; this corresponds to an approximate mass of 352 kDa.

The volume estimate graph shows how the enclosed volume varies with the contour level. The recommended contour level is shown as a vertical line and the intersection between the line and the curve gives the volume of the enclosed surface at the given level.

### 7.3 Rotationally averaged power spectrum [i](#)



\*Reported resolution corresponds to spatial frequency of 0.091 Å<sup>-1</sup>

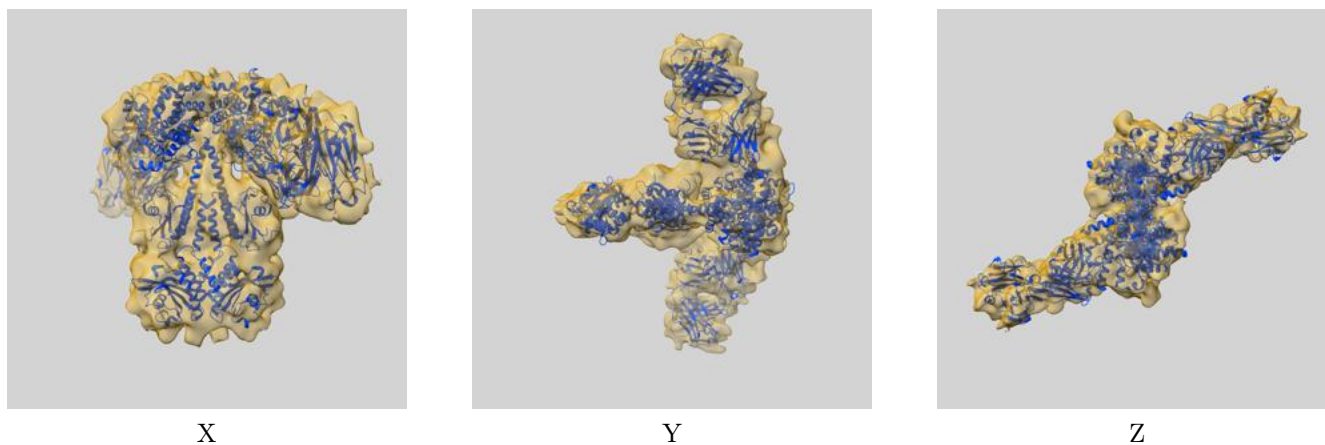
## 8 Fourier-Shell correlation

This section was not generated. No FSC curve or half-maps provided.

## 9 Map-model fit [i](#)

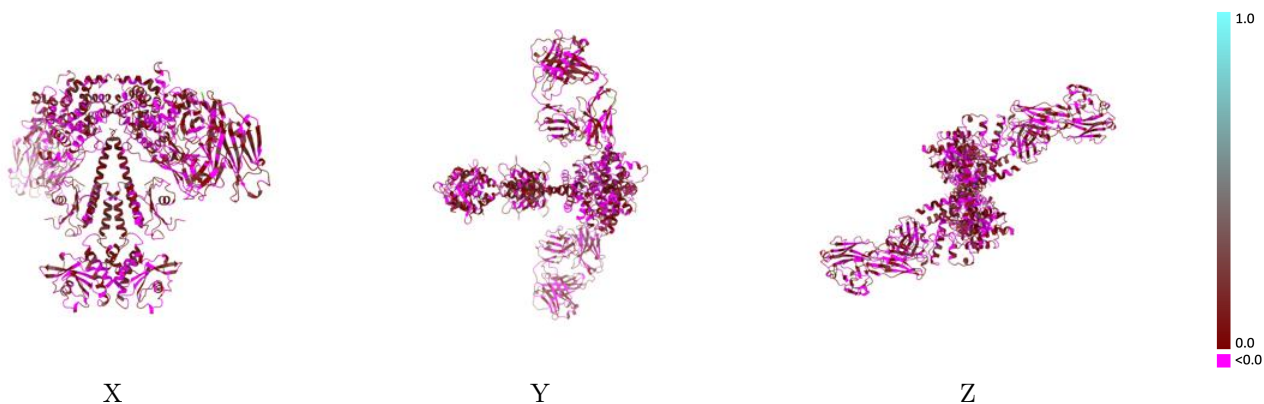
This section contains information regarding the fit between EMDB map EMD-6258 and PDB model 3JAB. Per-residue inclusion information can be found in section 3 on page 6.

### 9.1 Map-model overlay [i](#)



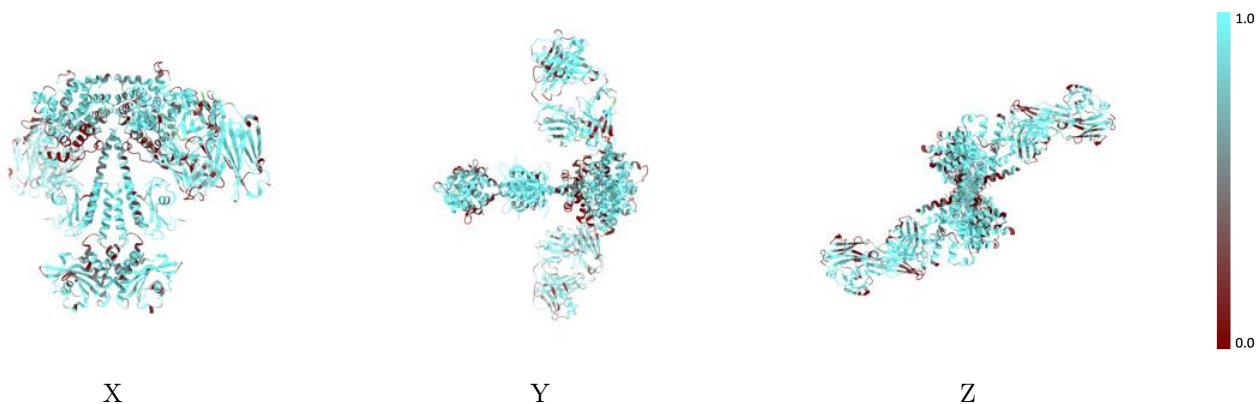
The images above show the 3D surface view of the map at the recommended contour level 1.0 at 50% transparency in yellow overlaid with a ribbon representation of the model coloured in blue. These images allow for the visual assessment of the quality of fit between the atomic model and the map.

## 9.2 Q-score mapped to coordinate model [\(i\)](#)



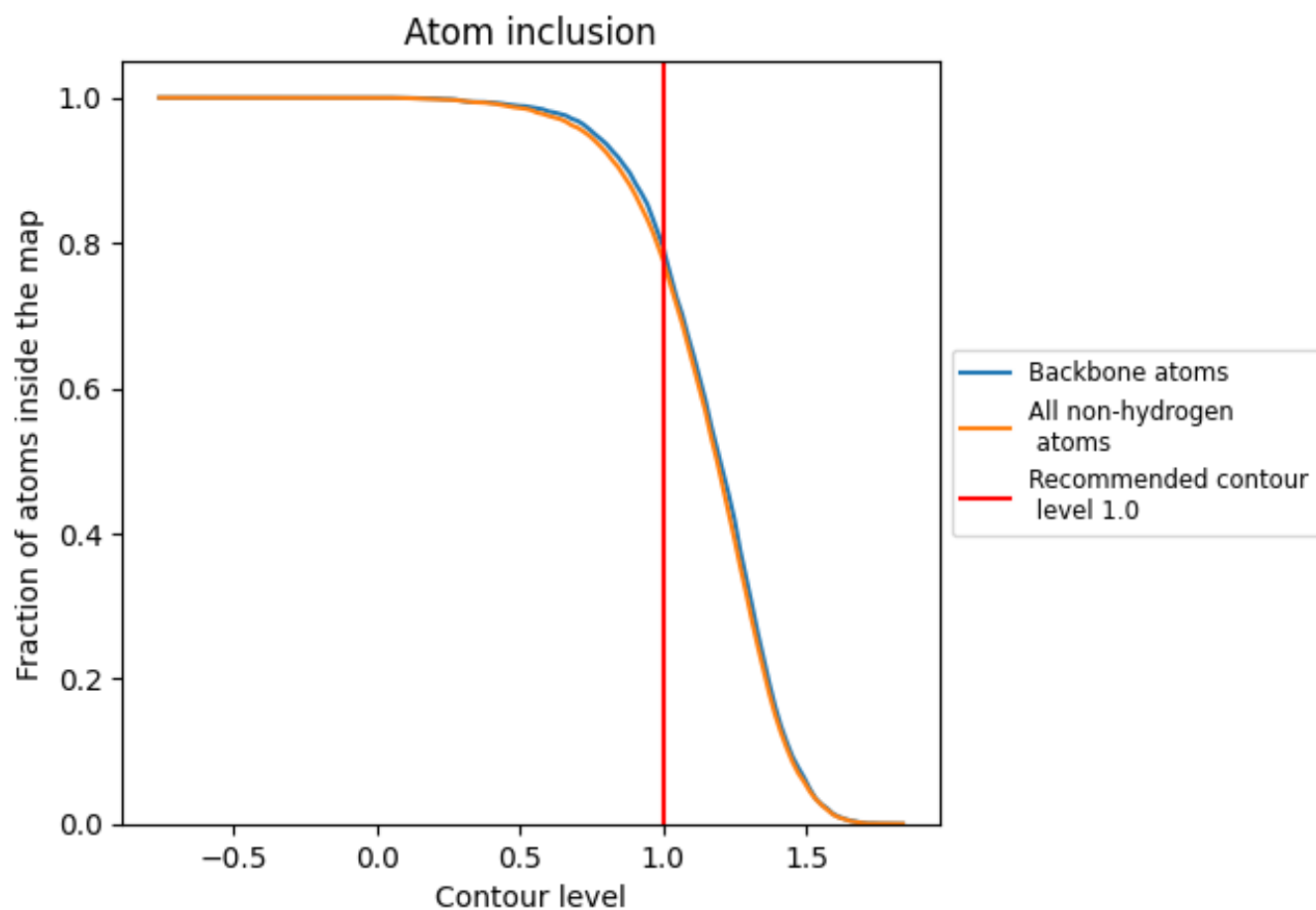
The images above show the model with each residue coloured according to its Q-score. This shows their resolvability in the map with higher Q-score values reflecting better resolvability. Please note: Q-score is calculating the resolvability of atoms, and thus high values are only expected at resolutions at which atoms can be resolved. Low Q-score values may therefore be expected for many entries.

## 9.3 Atom inclusion mapped to coordinate model [\(i\)](#)



The images above show the model with each residue coloured according to its atom inclusion. This shows to what extent they are inside the map at the recommended contour level (1.0).





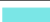





















## 9.4 Atom inclusion [i](#)



At the recommended contour level, 79% of all backbone atoms, 77% of all non-hydrogen atoms, are inside the map.

## 9.5 Map-model fit summary

The table lists the average atom inclusion at the recommended contour level (1.0) and Q-score for the entire model and for each chain.

Chain	Atom inclusion	Q-score
All	 0.7749	 0.0430
A	 0.7756	 0.0250
B	 0.9025	 0.0870
C	 0.7375	 0.0240
D	 0.5643	 0.0160
H	 0.7976	 0.0550
L	 0.7332	 0.0450
M	 0.7748	 0.0260
N	 0.8993	 0.0820
O	 0.7382	 0.0250
P	 0.5500	 0.0160
Q	 0.7970	 0.0600
R	 0.7351	 0.0450

