



Full wwPDB X-ray Structure Validation Report ⓘ

May 16, 2020 – 02:13 pm BST

PDB ID : 4J3M
Title : Tankyrase 2 in complex with 3-chloro-4-(4-methyl-2-oxo-1,2-dihydroquinolin-7-yl)benzoic acid
Authors : Jansson, A.E.; Larsson, E.A.; Nordlund, P.L.
Deposited on : 2013-02-06
Resolution : 1.90 Å(reported)

This is a Full wwPDB X-ray Structure Validation Report for a publicly released PDB entry.

We welcome your comments at validation@mail.wwpdb.org

A user guide is available at

<https://www.wwpdb.org/validation/2017/XrayValidationReportHelp>

with specific help available everywhere you see the ⓘ symbol.

The following versions of software and data (see [references ⓘ](#)) were used in the production of this report:

MolProbity : 4.02b-467
Mogul : 1.8.5 (274361), CSD as541be (2020)
Xtriage (Phenix) : 1.13
EDS : 2.11
buster-report : 1.1.7 (2018)
Percentile statistics : 20191225.v01 (using entries in the PDB archive December 25th 2019)
Refmac : 5.8.0158
CCP4 : 7.0.044 (Gargrove)
Ideal geometry (proteins) : Engh & Huber (2001)
Ideal geometry (DNA, RNA) : Parkinson et al. (1996)
Validation Pipeline (wwPDB-VP) : 2.11

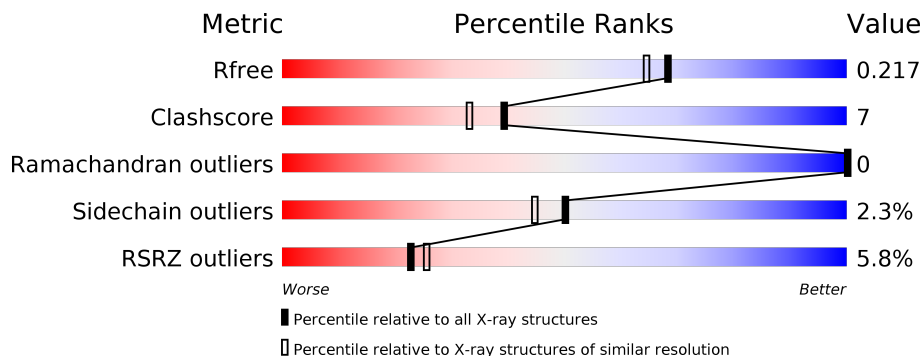
1 Overall quality at a glance

The following experimental techniques were used to determine the structure:

X-RAY DIFFRACTION

The reported resolution of this entry is 1.90 Å.

Percentile scores (ranging between 0-100) for global validation metrics of the entry are shown in the following graphic. The table shows the number of entries on which the scores are based.



Metric	Whole archive (#Entries)	Similar resolution (#Entries, resolution range(Å))
R_{free}	130704	6207 (1.90-1.90)
Clashscore	141614	6847 (1.90-1.90)
Ramachandran outliers	138981	6760 (1.90-1.90)
Sidechain outliers	138945	6760 (1.90-1.90)
RSRZ outliers	127900	6082 (1.90-1.90)

The table below summarises the geometric issues observed across the polymeric chains and their fit to the electron density. The red, orange, yellow and green segments on the lower bar indicate the fraction of residues that contain outliers for ≥ 3 , 2, 1 and 0 types of geometric quality criteria respectively. A grey segment represents the fraction of residues that are not modelled. The numeric value for each fraction is indicated below the corresponding segment, with a dot representing fractions $\leq 5\%$. The upper red bar (where present) indicates the fraction of residues that have poor fit to the electron density. The numeric value is given above the bar.

Mol	Chain	Length	Quality of chain
1	A	210	 8% 89% 10% ..
1	B	210	 3% 85% 12% ..

2 Entry composition [i](#)

There are 6 unique types of molecules in this entry. The entry contains 3826 atoms, of which 0 are hydrogens and 0 are deuteriums.

In the tables below, the ZeroOcc column contains the number of atoms modelled with zero occupancy, the AltConf column contains the number of residues with at least one atom in alternate conformation and the Trace column contains the number of residues modelled with at most 2 atoms.

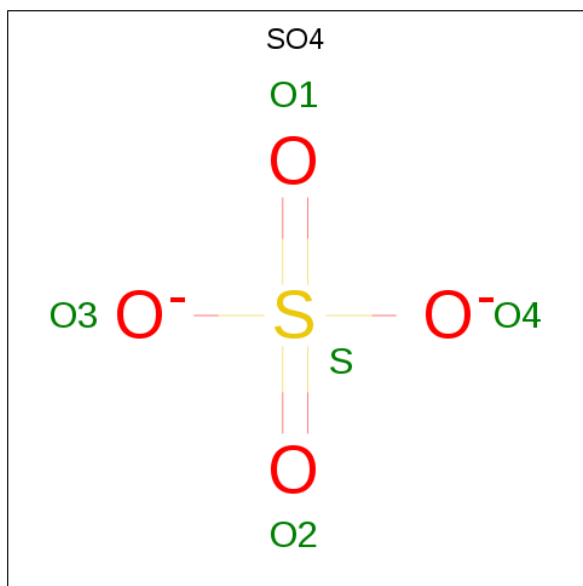
- Molecule 1 is a protein called Tankyrase-2.

Mol	Chain	Residues	Atoms					ZeroOcc	AltConf	Trace
			Total	C	N	O	S			
1	A	208	1667	1051	303	302	11	0	2	0
1	B	208	1671	1053	303	304	11	0	2	0

- Molecule 2 is ZINC ION (three-letter code: ZN) (formula: Zn).

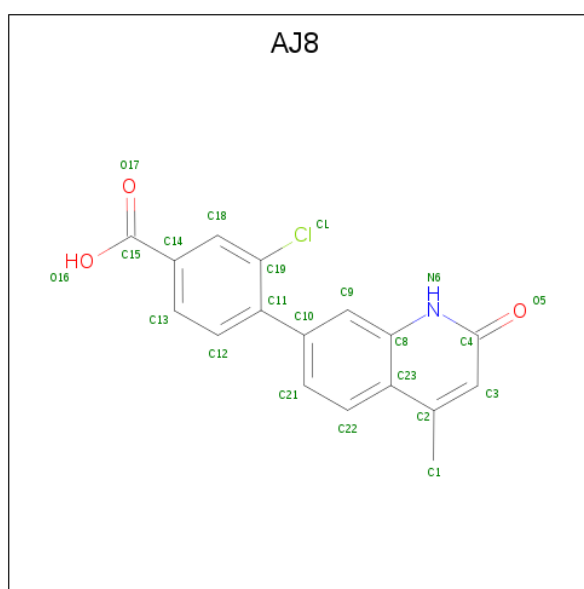
Mol	Chain	Residues	Atoms		ZeroOcc	AltConf
2	B	1	Total	Zn	0	0
			1	1		
2	A	1	Total	Zn	0	0
			1	1		

- Molecule 3 is SULFATE ION (three-letter code: SO4) (formula: O₄S).



Mol	Chain	Residues	Atoms	ZeroOcc	AltConf
3	A	1	Total O S 5 4 1	0	0
3	A	1	Total O S 5 4 1	0	0
3	B	1	Total O S 5 4 1	0	0
3	B	1	Total O S 5 4 1	0	0

- Molecule 4 is 3-chloro-4-(4-methyl-2-oxo-1,2-dihydroquinolin-7-yl)benzoic acid (three-letter code: AJ8) (formula: C₁₇H₁₂ClNO₃).



Mol	Chain	Residues	Atoms	ZeroOcc	AltConf
4	A	1	Total C Cl N O 22 17 1 1 3	0	0
4	B	1	Total C Cl N O 22 17 1 1 3	0	0

- Molecule 5 is GLYCEROL (three-letter code: GOL) (formula: C₃H₈O₃).



Mol	Chain	Residues	Atoms		ZeroOcc	AltConf
5	B	1	Total	C O	0	0
			6	3 3		

- Molecule 6 is water.

Mol	Chain	Residues	Atoms		ZeroOcc	AltConf
6	A	215	Total	O	0	0
			215	215		
6	B	201	Total	O	0	0
			201	201		

4 Data and refinement statistics

Property	Value	Source
Space group	C 2 2 21	Depositor
Cell constants a, b, c, α , β , γ	89.53Å 99.28Å 114.65Å 90.00° 90.00° 90.00°	Depositor
Resolution (Å)	29.98 – 1.90 29.96 – 1.90	Depositor EDS
% Data completeness (in resolution range)	94.4 (29.98-1.90) 94.5 (29.96-1.90)	Depositor EDS
R_{merge}	(Not available)	Depositor
R_{sym}	(Not available)	Depositor
$\langle I/\sigma(I) \rangle$ ¹	4.19 (at 1.91Å)	Xtrriage
Refinement program	REFMAC 5.7.0032	Depositor
R, R_{free}	0.171 , 0.218 0.170 , 0.217	Depositor DCC
R_{free} test set	1926 reflections (5.03%)	wwPDB-VP
Wilson B-factor (Å ²)	18.5	Xtrriage
Anisotropy	0.097	Xtrriage
Bulk solvent k_{sol} (e/Å ³), B_{sol} (Å ²)	0.37 , 51.8	EDS
L-test for twinning ²	$\langle L \rangle = 0.50$, $\langle L^2 \rangle = 0.33$	Xtrriage
Estimated twinning fraction	No twinning to report.	Xtrriage
F_o, F_c correlation	0.95	EDS
Total number of atoms	3826	wwPDB-VP
Average B, all atoms (Å ²)	23.0	wwPDB-VP

Xtrriage's analysis on translational NCS is as follows: *The largest off-origin peak in the Patterson function is 4.58% of the height of the origin peak. No significant pseudotranslation is detected.*

¹Intensities estimated from amplitudes.

²Theoretical values of $\langle |L| \rangle$, $\langle L^2 \rangle$ for acentric reflections are 0.5, 0.333 respectively for untwinned datasets, and 0.375, 0.2 for perfectly twinned datasets.

5 Model quality [i](#)

5.1 Standard geometry [i](#)

Bond lengths and bond angles in the following residue types are not validated in this section: AJ8, GOL, ZN, SO4

The Z score for a bond length (or angle) is the number of standard deviations the observed value is removed from the expected value. A bond length (or angle) with $|Z| > 5$ is considered an outlier worth inspection. RMSZ is the root-mean-square of all Z scores of the bond lengths (or angles).

Mol	Chain	Bond lengths		Bond angles	
		RMSZ	# $ Z > 5$	RMSZ	# $ Z > 5$
1	A	1.11	1/1716 (0.1%)	1.06	3/2311 (0.1%)
1	B	1.14	0/1720	1.05	4/2316 (0.2%)
All	All	1.12	1/3436 (0.0%)	1.06	7/4627 (0.2%)

All (1) bond length outliers are listed below:

Mol	Chain	Res	Type	Atoms	Z	Observed(Å)	Ideal(Å)
1	A	1155	TYR	CE1-CZ	5.75	1.46	1.38

All (7) bond angle outliers are listed below:

Mol	Chain	Res	Type	Atoms	Z	Observed(°)	Ideal(°)
1	A	1045	ASP	CB-CG-OD1	8.31	125.78	118.30
1	B	962	ASP	CB-CG-OD2	-6.48	112.46	118.30
1	B	962	ASP	CB-CG-OD1	6.14	123.83	118.30
1	B	967	SER	N-CA-CB	5.58	118.87	110.50
1	A	1045	ASP	CB-CG-OD2	-5.29	113.54	118.30
1	A	980	ARG	NE-CZ-NH2	-5.28	117.66	120.30
1	B	1143	ARG	NE-CZ-NH1	-5.19	117.71	120.30

There are no chirality outliers.

There are no planarity outliers.

5.2 Too-close contacts [i](#)

In the following table, the Non-H and H(model) columns list the number of non-hydrogen atoms and hydrogen atoms in the chain respectively. The H(added) column lists the number of hydrogen atoms added and optimized by MolProbity. The Clashes column lists the number of clashes within the asymmetric unit, whereas Symm-Clashes lists symmetry related clashes.

Mol	Chain	Non-H	H(model)	H(added)	Clashes	Symm-Clashes
1	A	1667	0	1594	21	3
1	B	1671	0	1598	27	0
2	A	1	0	0	0	0
2	B	1	0	0	0	0
3	A	10	0	0	0	0
3	B	10	0	0	1	0
4	A	22	0	11	1	0
4	B	22	0	11	0	0
5	B	6	0	8	0	0
6	A	215	0	0	14	2
6	B	201	0	0	18	1
All	All	3826	0	3222	49	5

The all-atom clashscore is defined as the number of clashes found per 1000 atoms (including hydrogen atoms). The all-atom clashscore for this structure is 7.

All (49) close contacts within the same asymmetric unit are listed below, sorted by their clash magnitude.

Atom-1	Atom-2	Interatomic distance (Å)	Clash overlap (Å)
1:B:957:ASP:CG	6:B:1402:HOH:O	1.83	1.16
1:B:1001[A]:CYS:SG	6:B:1455:HOH:O	2.11	1.07
1:B:1138:GLU:OE1	6:B:1414:HOH:O	1.75	1.03
1:B:957:ASP:CB	6:B:1402:HOH:O	2.12	0.97
3:B:1202:SO4:O3	6:B:1430:HOH:O	1.82	0.96
1:A:957:ASP:CB	6:A:1498:HOH:O	2.15	0.94
1:B:1105:LYS:HE2	6:B:1480:HOH:O	1.69	0.92
1:A:1128:ARG:HD3	6:A:1309:HOH:O	1.66	0.92
1:A:1116:ALA:HB2	6:A:1349:HOH:O	1.70	0.92
1:A:957:ASP:CG	6:A:1498:HOH:O	2.08	0.91
1:A:999:LYS:HG3	6:A:1336:HOH:O	1.72	0.90
1:A:999:LYS:CE	6:A:1336:HOH:O	2.23	0.86
1:A:1041:HIS:HD2	6:A:1331:HOH:O	1.62	0.83
1:A:999:LYS:HE3	6:A:1336:HOH:O	1.81	0.77
1:A:957:ASP:HB2	6:A:1498:HOH:O	1.79	0.76
1:A:1007:GLU:OE1	6:A:1504:HOH:O	2.09	0.70
1:A:964:GLU:OE2	1:A:999:LYS:NZ	2.20	0.68
1:B:1117:HIS:HE1	6:B:1499:HOH:O	1.76	0.67
1:A:1051:ILE:O	6:A:1419:HOH:O	2.13	0.66
1:B:1051:ILE:HD11	6:B:1456:HOH:O	2.02	0.59
1:B:1041:HIS:HD2	6:B:1327:HOH:O	1.87	0.58
1:B:1118:SER:OG	1:B:1142:TYR:CD2	2.55	0.58
1:B:1118:SER:HG	1:B:1142:TYR:HD2	1.48	0.57

Continued on next page...

Continued from previous page...

Atom-1	Atom-2	Interatomic distance (Å)	Clash overlap (Å)
1:B:1118:SER:OG	1:B:1142:TYR:HD2	1.87	0.57
1:B:1004:LYS:HE2	6:B:1496:HOH:O	2.05	0.56
1:B:971:GLU:HG2	1:B:1098:PHE:CZ	2.42	0.54
1:A:1128:ARG:HG3	6:A:1484:HOH:O	2.07	0.54
1:B:1118:SER:HA	1:B:1142:TYR:CE2	2.44	0.52
1:A:999:LYS:HE2	6:A:1336:HOH:O	1.97	0.51
1:A:1082:PRO:HD2	6:A:1314:HOH:O	2.10	0.50
1:B:957:ASP:OD2	6:B:1402:HOH:O	2.13	0.49
1:B:980:ARG:HD2	6:B:1493:HOH:O	2.11	0.49
1:B:1118:SER:HB2	1:B:1122:HIS:O	2.14	0.48
1:A:971:GLU:HG2	1:A:1098:PHE:CZ	2.48	0.48
1:B:957:ASP:HB2	6:B:1402:HOH:O	1.94	0.47
1:B:999:LYS:HG3	6:B:1380:HOH:O	2.14	0.46
1:B:984:HIS:HD2	6:B:1482:HOH:O	1.98	0.45
1:B:980:ARG:HD3	6:B:1476:HOH:O	2.16	0.44
1:A:1095:GLN:HA	1:A:1153:ILE:O	2.18	0.44
1:B:999:LYS:NZ	6:B:1492:HOH:O	2.50	0.44
1:B:1004:LYS:HE3	1:B:1008:ARG:NH2	2.33	0.44
1:A:1110:PHE:CD1	1:B:1083:VAL:HG21	2.53	0.43
1:B:1000:VAL:HB	1:B:1149:PRO:O	2.18	0.42
1:B:1128:ARG:HA	1:B:1129:PRO:HD3	1.79	0.42
1:A:1118:SER:HG	1:A:1142:TYR:HD2	1.66	0.42
1:A:1148:TYR:HD2	1:A:1150:GLU:HG2	1.84	0.42
1:A:1134:LEU:HA	1:A:1134:LEU:HD23	1.73	0.41
1:B:1021:HIS:HD2	6:B:1469:HOH:O	2.04	0.41
4:A:1204:AJ8:H4	4:A:1204:AJ8:H3	1.85	0.40

All (5) symmetry-related close contacts are listed below. The label for Atom-2 includes the symmetry operator and encoded unit-cell translations to be applied.

Atom-1	Atom-2	Interatomic distance (Å)	Clash overlap (Å)
6:A:1476:HOH:O	6:A:1476:HOH:O[3_554]	1.83	0.37
1:A:1128:ARG:NH1	1:A:1128:ARG:NH1[3_554]	1.91	0.29
1:A:1128:ARG:CZ	1:A:1128:ARG:NH2[3_554]	2.05	0.15
1:A:1128:ARG:NH2	1:A:1128:ARG:NH2[3_554]	2.13	0.07
6:A:1442:HOH:O	6:B:1444:HOH:O[8_555]	2.15	0.05

5.3 Torsion angles [i](#)

5.3.1 Protein backbone [i](#)

In the following table, the Percentiles column shows the percent Ramachandran outliers of the chain as a percentile score with respect to all X-ray entries followed by that with respect to entries of similar resolution.

The Analysed column shows the number of residues for which the backbone conformation was analysed, and the total number of residues.

Mol	Chain	Analysed	Favoured	Allowed	Outliers	Percentiles	
1	A	206/210 (98%)	203 (98%)	3 (2%)	0	100	100
1	B	206/210 (98%)	203 (98%)	3 (2%)	0	100	100
All	All	412/420 (98%)	406 (98%)	6 (2%)	0	100	100

There are no Ramachandran outliers to report.

5.3.2 Protein sidechains [i](#)

In the following table, the Percentiles column shows the percent sidechain outliers of the chain as a percentile score with respect to all X-ray entries followed by that with respect to entries of similar resolution.

The Analysed column shows the number of residues for which the sidechain conformation was analysed, and the total number of residues.

Mol	Chain	Analysed	Rotameric	Outliers	Percentiles	
1	A	176/178 (99%)	174 (99%)	2 (1%)	73	73
1	B	177/178 (99%)	171 (97%)	6 (3%)	37	28
All	All	353/356 (99%)	345 (98%)	8 (2%)	50	45

All (8) residues with a non-rotameric sidechain are listed below:

Mol	Chain	Res	Type
1	A	957	ASP
1	A	1118	SER
1	B	957	ASP
1	B	963	LYS
1	B	967	SER
1	B	1045	ASP
1	B	1046	GLU
1	B	1118	SER

Some sidechains can be flipped to improve hydrogen bonding and reduce clashes. All (5) such sidechains are listed below:

Mol	Chain	Res	Type
1	A	984	HIS
1	A	1041	HIS
1	A	1109	GLN
1	B	1021	HIS
1	B	1041	HIS

5.3.3 RNA [i](#)

There are no RNA molecules in this entry.

5.4 Non-standard residues in protein, DNA, RNA chains [i](#)

There are no non-standard protein/DNA/RNA residues in this entry.

5.5 Carbohydrates [i](#)

There are no carbohydrates in this entry.

5.6 Ligand geometry [i](#)

Of 9 ligands modelled in this entry, 2 are monoatomic - leaving 7 for Mogul analysis.

In the following table, the Counts columns list the number of bonds (or angles) for which Mogul statistics could be retrieved, the number of bonds (or angles) that are observed in the model and the number of bonds (or angles) that are defined in the Chemical Component Dictionary. The Link column lists molecule types, if any, to which the group is linked. The Z score for a bond length (or angle) is the number of standard deviations the observed value is removed from the expected value. A bond length (or angle) with $|Z| > 2$ is considered an outlier worth inspection. RMSZ is the root-mean-square of all Z scores of the bond lengths (or angles).

Mol	Type	Chain	Res	Link	Bond lengths			Bond angles		
					Counts	RMSZ	$\# Z > 2$	Counts	RMSZ	$\# Z > 2$
3	SO4	A	1203	-	4,4,4	0.68	0	6,6,6	0.48	0
3	SO4	B	1202	-	4,4,4	0.39	0	6,6,6	1.09	0
4	AJ8	B	1204	-	21,24,24	1.36	4 (19%)	29,35,35	2.25	12 (41%)
5	GOL	B	1205	-	5,5,5	0.90	0	5,5,5	0.93	0
4	AJ8	A	1204	-	21,24,24	1.26	2 (9%)	29,35,35	2.50	11 (37%)
3	SO4	B	1203	-	4,4,4	0.41	0	6,6,6	0.50	0
3	SO4	A	1202	-	4,4,4	0.41	0	6,6,6	1.41	1 (16%)

In the following table, the Chirals column lists the number of chiral outliers, the number of chiral centers analysed, the number of these observed in the model and the number defined in the Chemical Component Dictionary. Similar counts are reported in the Torsion and Rings columns. '-' means no outliers of that kind were identified.

Mol	Type	Chain	Res	Link	Chirals	Torsions	Rings
4	AJ8	B	1204	-	-	0/4/8/8	0/3/3/3
4	AJ8	A	1204	-	-	0/4/8/8	0/3/3/3
5	GOL	B	1205	-	-	1/4/4/4	-

All (6) bond length outliers are listed below:

Mol	Chain	Res	Type	Atoms	Z	Observed(Å)	Ideal(Å)
4	B	1204	AJ8	C1-C2	3.51	1.57	1.51
4	A	1204	AJ8	C8-N6	3.41	1.41	1.35
4	B	1204	AJ8	C21-C10	2.96	1.45	1.39
4	A	1204	AJ8	C2-C23	2.51	1.47	1.42
4	B	1204	AJ8	C2-C23	2.04	1.47	1.42
4	B	1204	AJ8	C11-C19	2.02	1.43	1.39

All (24) bond angle outliers are listed below:

Mol	Chain	Res	Type	Atoms	Z	Observed(°)	Ideal(°)
4	A	1204	AJ8	C3-C2-C23	6.54	124.22	117.78
4	A	1204	AJ8	C23-C8-N6	-4.77	118.89	123.35
4	A	1204	AJ8	C14-C18-C19	-4.15	116.22	120.35
4	B	1204	AJ8	C13-C14-C18	4.04	123.87	118.16
4	B	1204	AJ8	C12-C11-C19	3.96	122.02	117.63
4	B	1204	AJ8	C10-C9-C8	-3.80	118.12	121.44
4	B	1204	AJ8	C23-C8-N6	-3.69	119.89	123.35
4	A	1204	AJ8	C21-C10-C11	-3.61	115.07	120.91
4	A	1204	AJ8	C18-C19-CL	-3.60	112.67	118.49
4	B	1204	AJ8	C14-C18-C19	-3.58	116.79	120.35
4	A	1204	AJ8	C13-C14-C18	3.58	123.22	118.16
4	B	1204	AJ8	C21-C10-C11	-3.41	115.39	120.91
4	A	1204	AJ8	C4-N6-C8	3.39	122.63	117.86
4	B	1204	AJ8	C4-N6-C8	3.21	122.39	117.86
4	B	1204	AJ8	C18-C14-C15	-3.15	116.21	120.36
4	B	1204	AJ8	C3-C4-N6	-3.07	120.50	124.08
3	A	1202	SO4	O4-S-O3	-2.91	96.65	109.06
4	A	1204	AJ8	C1-C2-C23	-2.79	116.76	121.08
4	A	1204	AJ8	C18-C14-C15	-2.65	116.87	120.36
4	A	1204	AJ8	C11-C19-CL	2.56	124.42	120.75
4	B	1204	AJ8	C21-C10-C9	2.21	121.55	118.09

Continued on next page...

Continued from previous page...

Mol	Chain	Res	Type	Atoms	Z	Observed(°)	Ideal(°)
4	B	1204	AJ8	C11-C19-CL	2.08	123.74	120.75
4	A	1204	AJ8	C9-C8-N6	2.06	121.32	119.05
4	B	1204	AJ8	C18-C19-C11	-2.06	120.44	121.91

There are no chirality outliers.

All (1) torsion outliers are listed below:

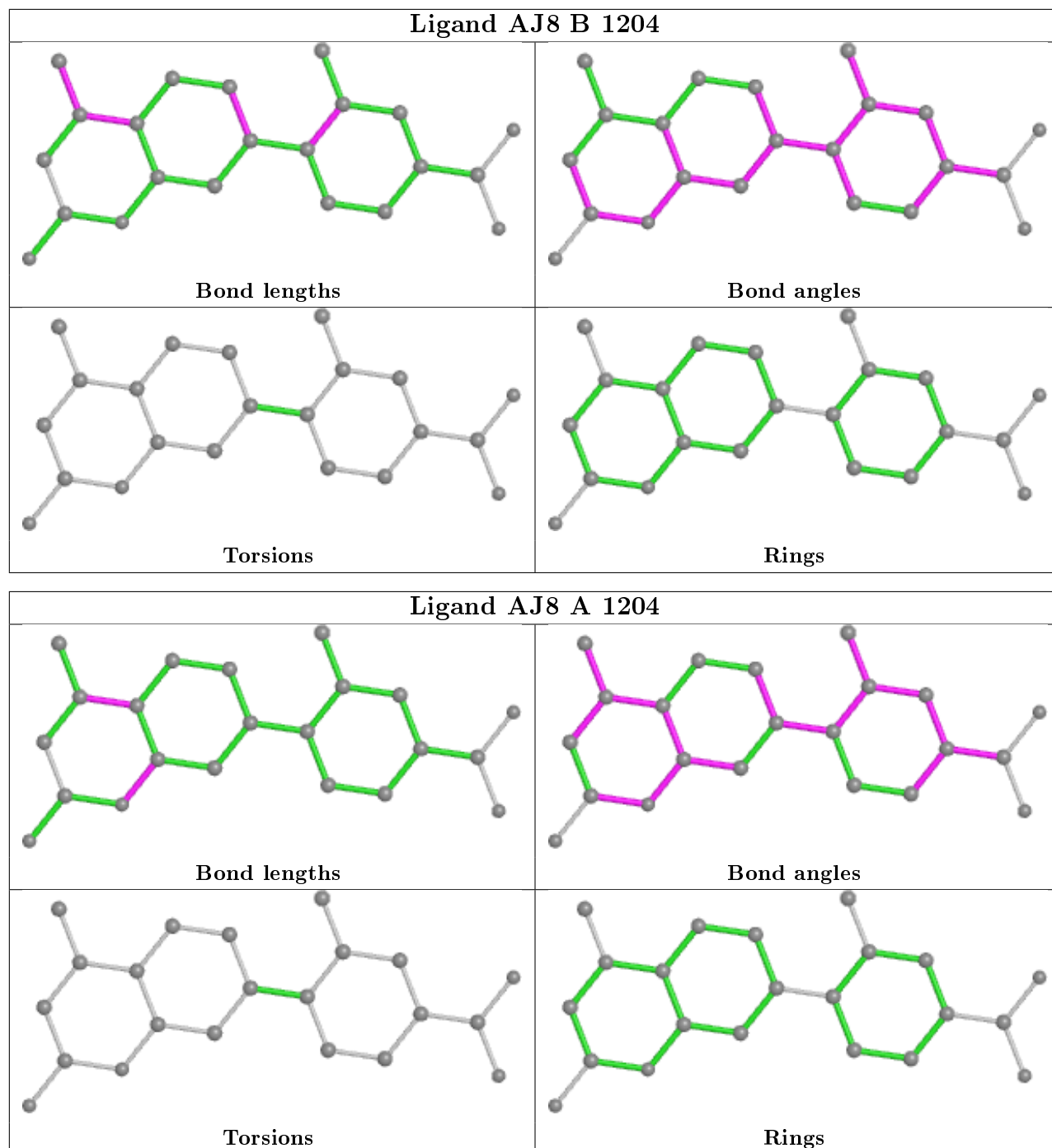
Mol	Chain	Res	Type	Atoms
5	B	1205	GOL	O1-C1-C2-C3

There are no ring outliers.

2 monomers are involved in 2 short contacts:

Mol	Chain	Res	Type	Clashes	Symm-Clashes
3	B	1202	SO4	1	0
4	A	1204	AJ8	1	0

The following is a two-dimensional graphical depiction of Mogul quality analysis of bond lengths, bond angles, torsion angles, and ring geometry for all instances of the Ligand of Interest. In addition, ligands with molecular weight > 250 and outliers as shown on the validation Tables will also be included. For torsion angles, if less than 5% of the Mogul distribution of torsion angles is within 10 degrees of the torsion angle in question, then that torsion angle is considered an outlier. Any bond that is central to one or more torsion angles identified as an outlier by Mogul will be highlighted in the graph. For rings, the root-mean-square deviation (RMSD) between the ring in question and similar rings identified by Mogul is calculated over all ring torsion angles. If the average RMSD is greater than 60 degrees and the minimal RMSD between the ring in question and any Mogul-identified rings is also greater than 60 degrees, then that ring is considered an outlier. The outliers are highlighted in purple. The color gray indicates Mogul did not find sufficient equivalents in the CSD to analyse the geometry.



5.7 Other polymers [i](#)

There are no such residues in this entry.

5.8 Polymer linkage issues [i](#)

There are no chain breaks in this entry.

6 Fit of model and data

6.1 Protein, DNA and RNA chains

In the following table, the column labelled ‘#RSRZ> 2’ contains the number (and percentage) of RSRZ outliers, followed by percent RSRZ outliers for the chain as percentile scores relative to all X-ray entries and entries of similar resolution. The OWAB column contains the minimum, median, 95th percentile and maximum values of the occupancy-weighted average B-factor per residue. The column labelled ‘Q< 0.9’ lists the number of (and percentage) of residues with an average occupancy less than 0.9.

Mol	Chain	Analysed	<RSRZ>	#RSRZ>2	OWAB(Å ²)	Q<0.9
1	A	208/210 (99%)	0.08	17 (8%) 11 13	8, 18, 56, 110	0
1	B	208/210 (99%)	0.01	7 (3%) 45 48	8, 19, 46, 99	0
All	All	416/420 (99%)	0.04	24 (5%) 23 25	8, 19, 52, 110	0

All (24) RSRZ outliers are listed below:

Mol	Chain	Res	Type	RSRZ
1	B	1117	HIS	6.8
1	A	1116	ALA	6.8
1	A	1112	ALA	6.1
1	A	1117	HIS	5.9
1	B	1118	SER	5.7
1	A	1131	VAL	5.6
1	A	1120	PRO	5.4
1	B	1120	PRO	4.8
1	A	1113	MET	4.5
1	B	1116	ALA	4.2
1	B	1119	PRO	4.2
1	A	1118	SER	4.1
1	A	1130	SER	4.1
1	A	1119	PRO	4.1
1	A	1048	HIS	3.7
1	B	1121	GLY	3.1
1	A	1133	GLY	3.0
1	A	1132	ASN	3.0
1	A	1128	ARG	2.9
1	A	1134	LEU	2.8
1	A	1121	GLY	2.7
1	B	1021	HIS	2.4
1	A	1161	GLU	2.3
1	A	1051	ILE	2.0

6.2 Non-standard residues in protein, DNA, RNA chains [i](#)

There are no non-standard protein/DNA/RNA residues in this entry.

6.3 Carbohydrates [i](#)

There are no carbohydrates in this entry.

6.4 Ligands [i](#)

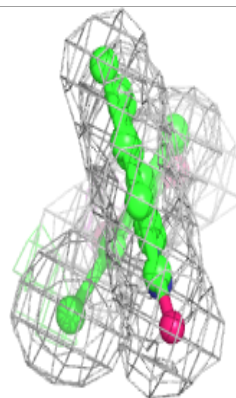
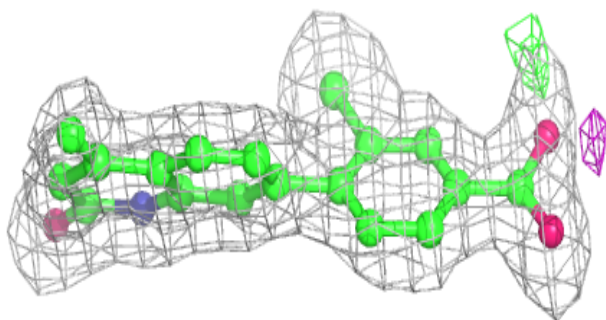
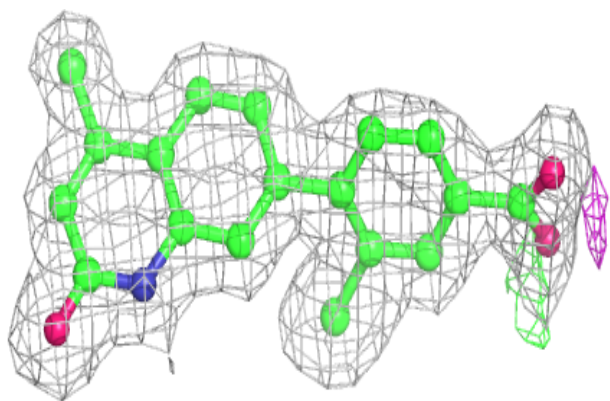
In the following table, the Atoms column lists the number of modelled atoms in the group and the number defined in the chemical component dictionary. The B-factors column lists the minimum, median, 95th percentile and maximum values of B factors of atoms in the group. The column labelled 'Q< 0.9' lists the number of atoms with occupancy less than 0.9.

Mol	Type	Chain	Res	Atoms	RSCC	RSR	B-factors(\AA^2)	Q<0.9
3	SO4	A	1203	5/5	0.90	0.23	43,47,58,59	0
5	GOL	B	1205	6/6	0.93	0.14	28,34,38,42	0
4	AJ8	B	1204	22/22	0.97	0.08	9,16,30,32	0
3	SO4	B	1203	5/5	0.97	0.14	43,44,50,56	0
3	SO4	B	1202	5/5	0.97	0.08	21,25,28,31	0
4	AJ8	A	1204	22/22	0.97	0.08	11,14,24,31	0
2	ZN	B	1201	1/1	0.99	0.04	26,26,26,26	0
2	ZN	A	1201	1/1	0.99	0.03	19,19,19,19	0
3	SO4	A	1202	5/5	0.99	0.08	17,25,28,31	0

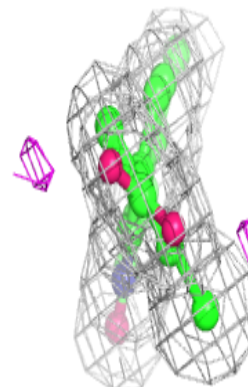
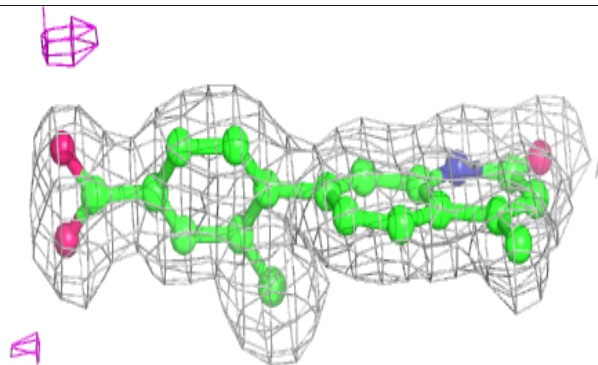
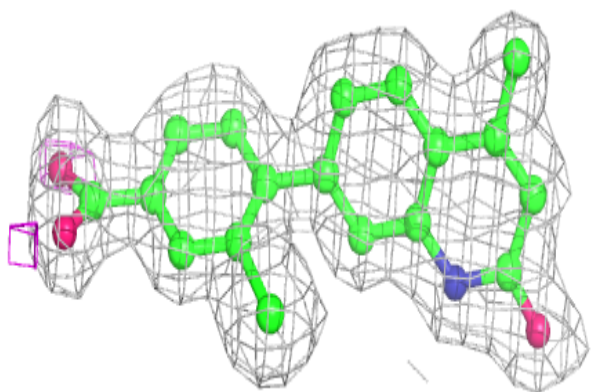
The following is a graphical depiction of the model fit to experimental electron density of all instances of the Ligand of Interest. In addition, ligands with molecular weight > 250 and outliers as shown on the geometry validation Tables will also be included. Each fit is shown from different orientation to approximate a three-dimensional view.

Electron density around AJ8 B 1204:

$2mF_o-DF_c$ (at 0.7 rmsd) in gray
 mF_o-DF_c (at 3 rmsd) in purple (negative)
and green (positive)

**Electron density around AJ8 A 1204:**

$2mF_o-DF_c$ (at 0.7 rmsd) in gray
 mF_o-DF_c (at 3 rmsd) in purple (negative)
and green (positive)



6.5 Other polymers

There are no such residues in this entry.