



Full wwPDB X-ray Structure Validation Report ⓘ

Apr 1, 2024 – 02:17 PM JST

PDB ID : 8J2X
Title : Saccharothrix syringae photocobilins protein, light state
Authors : Zhang, S.; Poddar, H.; Levy, C.; Leys, D.
Deposited on : 2023-04-15
Resolution : 1.98 Å(reported)

This is a Full wwPDB X-ray Structure Validation Report for a publicly released PDB entry.

We welcome your comments at validation@mail.wwpdb.org

A user guide is available at

<https://www.wwpdb.org/validation/2017/XrayValidationReportHelp>

with specific help available everywhere you see the ⓘ symbol.

The types of validation reports are described at

<http://www.wwpdb.org/validation/2017/FAQs#types>.

The following versions of software and data (see [references ⓘ](#)) were used in the production of this report:

MolProbity : 4.02b-467
Mogul : 1.8.5 (274361), CSD as541be (2020)
Xtriage (Phenix) : 1.13
EDS : 2.36
buster-report : 1.1.7 (2018)
Percentile statistics : 20191225.v01 (using entries in the PDB archive December 25th 2019)
Refmac : 5.8.0158
CCP4 : 7.0.044 (Gargrove)
Ideal geometry (proteins) : Engh & Huber (2001)
Ideal geometry (DNA, RNA) : Parkinson et al. (1996)
Validation Pipeline (wwPDB-VP) : 2.36

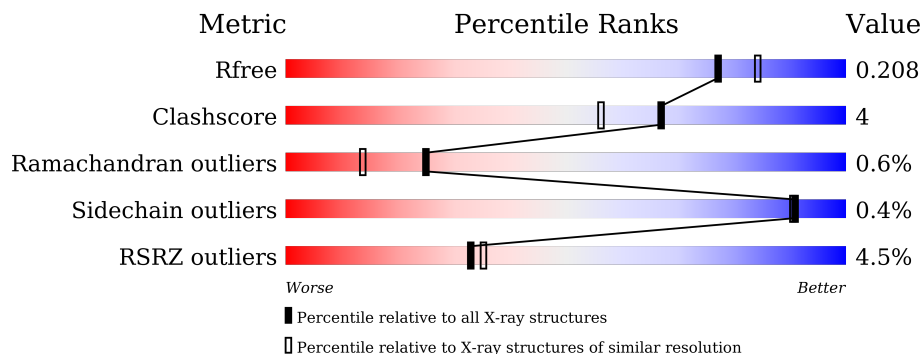
1 Overall quality at a glance

The following experimental techniques were used to determine the structure:

X-RAY DIFFRACTION

The reported resolution of this entry is 1.98 Å.

Percentile scores (ranging between 0-100) for global validation metrics of the entry are shown in the following graphic. The table shows the number of entries on which the scores are based.



Metric	Whole archive (#Entries)	Similar resolution (#Entries, resolution range(Å))
R_{free}	130704	11647 (2.00-1.96)
Clashscore	141614	1014 (1.98-1.98)
Ramachandran outliers	138981	1006 (1.98-1.98)
Sidechain outliers	138945	1006 (1.98-1.98)
RSRZ outliers	127900	11410 (2.00-1.96)

The table below summarises the geometric issues observed across the polymeric chains and their fit to the electron density. The red, orange, yellow and green segments of the lower bar indicate the fraction of residues that contain outliers for ≥ 3 , 2, 1 and 0 types of geometric quality criteria respectively. A grey segment represents the fraction of residues that are not modelled. The numeric value for each fraction is indicated below the corresponding segment, with a dot representing fractions $\leq 5\%$. The upper red bar (where present) indicates the fraction of residues that have poor fit to the electron density. The numeric value is given above the bar.

Mol	Chain	Length	Quality of chain
1	A	341	

2 Entry composition i

There are 5 unique types of molecules in this entry. The entry contains 2789 atoms, of which 0 are hydrogens and 0 are deuteriums.

In the tables below, the ZeroOcc column contains the number of atoms modelled with zero occupancy, the AltConf column contains the number of residues with at least one atom in alternate conformation and the Trace column contains the number of residues modelled with at most 2 atoms.

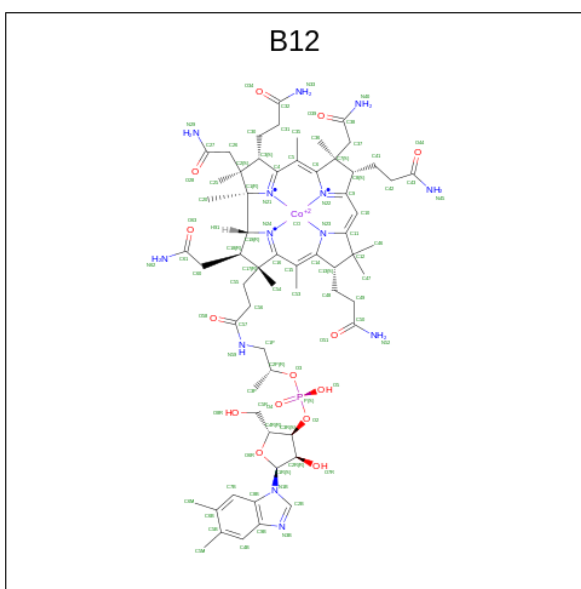
- Molecule 1 is a protein called Cobalamin-binding protein.

Mol	Chain	Residues	Atoms					ZeroOcc	AltConf	Trace
			Total	C	N	O	S			
1	A	337	2568	1616	482	465	5	0	3	0

There are 4 discrepancies between the modelled and reference sequences:

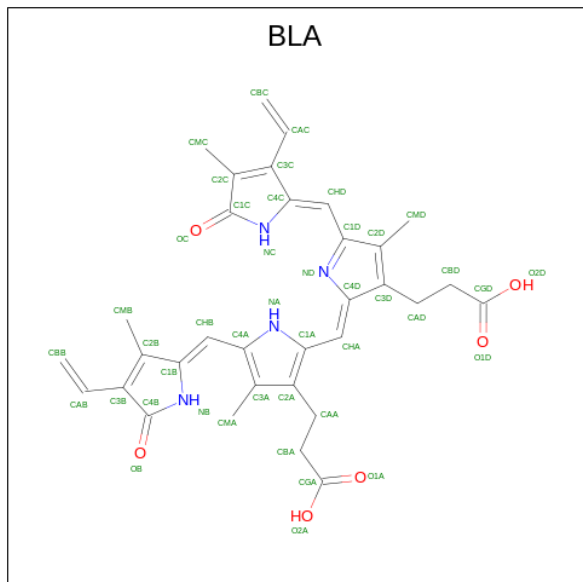
Chain	Residue	Modelled	Actual	Comment	Reference
A	343	LEU	-	expression tag	UNP A0A5Q0H231
A	344	GLU	-	expression tag	UNP A0A5Q0H231
A	345	HIS	-	expression tag	UNP A0A5Q0H231
A	346	HIS	-	expression tag	UNP A0A5Q0H231

- Molecule 2 is COBALAMIN (three-letter code: B12) (formula: $C_{62}H_{89}CoN_{13}O_{14}P$) (labeled as "Ligand of Interest" by depositor).



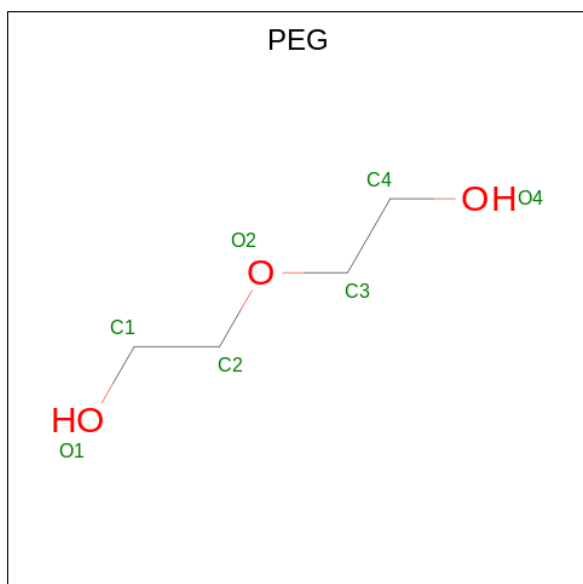
Mol	Chain	Residues	Atoms						ZeroOcc	AltConf
			Total	C	Co	N	O	P		
2	A	1	91	62	1	13	14	1	0	0

- Molecule 3 is BILIVERDINE IX ALPHA (three-letter code: BLA) (formula: $C_{33}H_{34}N_4O_6$) (labeled as "Ligand of Interest" by depositor).



Mol	Chain	Residues	Atoms			ZeroOcc	AltConf	
			Total	C	N			O
3	A	1	43	33	4	6	0	0

- Molecule 4 is DI(HYDROXYETHYL)ETHER (three-letter code: PEG) (formula: $C_4H_{10}O_3$).



Mol	Chain	Residues	Atoms		ZeroOcc	AltConf	
			Total	C			O
4	A	1	7	4	3	0	0

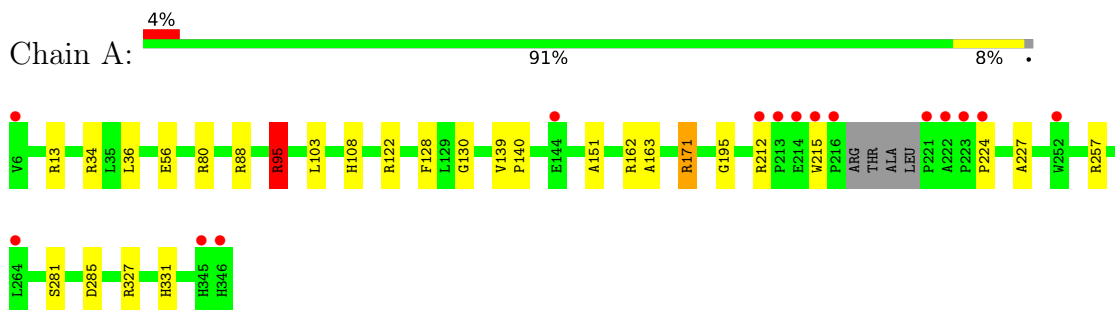
- Molecule 5 is water.

Mol	Chain	Residues	Atoms		ZeroOcc	AltConf
5	A	80	Total	O	0	0
			80	80		

3 Residue-property plots [i](#)

These plots are drawn for all protein, RNA, DNA and oligosaccharide chains in the entry. The first graphic for a chain summarises the proportions of the various outlier classes displayed in the second graphic. The second graphic shows the sequence view annotated by issues in geometry and electron density. Residues are color-coded according to the number of geometric quality criteria for which they contain at least one outlier: green = 0, yellow = 1, orange = 2 and red = 3 or more. A red dot above a residue indicates a poor fit to the electron density ($RSRZ > 2$). Stretches of 2 or more consecutive residues without any outlier are shown as a green connector. Residues present in the sample, but not in the model, are shown in grey.

- Molecule 1: Cobalamin-binding protein



4 Data and refinement statistics i

Property	Value	Source
Space group	P 32 2 1	Depositor
Cell constants a, b, c, α , β , γ	109.67Å 109.67Å 98.07Å 90.00° 90.00° 120.00°	Depositor
Resolution (Å)	94.97 – 1.98 94.97 – 1.98	Depositor EDS
% Data completeness (in resolution range)	100.0 (94.97-1.98) 100.0 (94.97-1.98)	Depositor EDS
R_{merge}	0.07	Depositor
R_{sym}	(Not available)	Depositor
$\langle I/\sigma(I) \rangle$ ¹	1.47 (at 1.98Å)	Xtrriage
Refinement program	REFMAC 5.0	Depositor
R, R_{free}	0.183 , 0.200 0.194 , 0.208	Depositor DCC
R_{free} test set	2271 reflections (4.75%)	wwPDB-VP
Wilson B-factor (Å ²)	49.6	Xtrriage
Anisotropy	0.313	Xtrriage
Bulk solvent k_{sol} (e/Å ³), B_{sol} (Å ²)	0.36 , 52.3	EDS
L-test for twinning ²	$\langle L \rangle = 0.50$, $\langle L^2 \rangle = 0.33$	Xtrriage
Estimated twinning fraction	0.025 for -h,-k,l	Xtrriage
F_o, F_c correlation	0.97	EDS
Total number of atoms	2789	wwPDB-VP
Average B, all atoms (Å ²)	60.0	wwPDB-VP

Xtrriage's analysis on translational NCS is as follows: *The largest off-origin peak in the Patterson function is 3.80% of the height of the origin peak. No significant pseudotranslation is detected.*

¹Intensities estimated from amplitudes.

²Theoretical values of $\langle |L| \rangle$, $\langle L^2 \rangle$ for acentric reflections are 0.5, 0.333 respectively for untwinned datasets, and 0.375, 0.2 for perfectly twinned datasets.

5 Model quality [i](#)

5.1 Standard geometry [i](#)

Bond lengths and bond angles in the following residue types are not validated in this section: PEG, B12, BLA

The Z score for a bond length (or angle) is the number of standard deviations the observed value is removed from the expected value. A bond length (or angle) with $|Z| > 5$ is considered an outlier worth inspection. RMSZ is the root-mean-square of all Z scores of the bond lengths (or angles).

Mol	Chain	Bond lengths		Bond angles	
		RMSZ	# Z >5	RMSZ	# Z >5
1	A	0.36	0/2634	0.62	0/3607

Chiral center outliers are detected by calculating the chiral volume of a chiral center and verifying if the center is modelled as a planar moiety or with the opposite hand. A planarity outlier is detected by checking planarity of atoms in a peptide group, atoms in a mainchain group or atoms of a sidechain that are expected to be planar.

Mol	Chain	#Chirality outliers	#Planarity outliers
1	A	0	6

There are no bond length outliers.

There are no bond angle outliers.

There are no chirality outliers.

All (6) planarity outliers are listed below:

Mol	Chain	Res	Type	Group
1	A	122	ARG	Sidechain
1	A	171	ARG	Sidechain
1	A	212	ARG	Sidechain
1	A	257	ARG	Sidechain
1	A	80	ARG	Sidechain
1	A	95	ARG	Sidechain

5.2 Too-close contacts [i](#)

In the following table, the Non-H and H(model) columns list the number of non-hydrogen atoms and hydrogen atoms in the chain respectively. The H(added) column lists the number of hydrogen atoms added and optimized by MolProbity. The Clashes column lists the number of clashes within the asymmetric unit, whereas Symm-Clashes lists symmetry-related clashes.

Mol	Chain	Non-H	H(model)	H(added)	Clashes	Symm-Clashes
1	A	2568	0	2528	14	1
2	A	91	0	87	8	0
3	A	43	0	32	1	0
4	A	7	0	10	0	0
5	A	80	0	0	2	0
All	All	2789	0	2657	21	1

The all-atom clashscore is defined as the number of clashes found per 1000 atoms (including hydrogen atoms). The all-atom clashscore for this structure is 4.

All (21) close contacts within the same asymmetric unit are listed below, sorted by their clash magnitude.

Atom-1	Atom-2	Interatomic distance (Å)	Clash overlap (Å)
2:A:401:B12:H351	2:A:401:B12:H362	1.48	0.94
1:A:285:ASP:OD1	1:A:327[A]:ARG:NH1	2.07	0.87
1:A:327[B]:ARG:NH1	5:A:501:HOH:O	2.14	0.80
1:A:151:ALA:HB1	2:A:401:B12:HM52	1.72	0.71
1:A:171:ARG:NH2	1:A:195:GLY:O	2.30	0.65
1:A:103:LEU:HD11	1:A:163:ALA:HB2	1.85	0.58
1:A:331:HIS:HE1	5:A:524:HOH:O	1.87	0.57
3:A:402:BLA:HMD2	3:A:402:BLA:HC	1.70	0.56
2:A:401:B12:H362	2:A:401:B12:C35	2.30	0.56
2:A:401:B12:H302	2:A:401:B12:H353	1.88	0.55
2:A:401:B12:H531	2:A:401:B12:H552	1.88	0.54
2:A:401:B12:H351	2:A:401:B12:C36	2.27	0.50
1:A:108:HIS:CE1	2:A:401:B12:N22	2.81	0.49
1:A:128:PHE:CE2	1:A:130:GLY:HA2	2.48	0.48
1:A:13[B]:ARG:NH2	1:A:56:GLU:OE1	2.43	0.48
1:A:162:ARG:HH11	1:A:162:ARG:HG3	1.80	0.46
2:A:401:B12:H531	2:A:401:B12:C55	2.46	0.45
1:A:36:LEU:HD12	1:A:88:ARG:HD3	2.01	0.42
1:A:139:VAL:HB	1:A:140:PRO:HD3	2.02	0.41
1:A:281:SER:OG	1:A:331:HIS:HD2	2.02	0.41
1:A:95:ARG:HH11	1:A:95:ARG:CG	2.35	0.40

All (1) symmetry-related close contacts are listed below. The label for Atom-2 includes the symmetry operator and encoded unit-cell translations to be applied.

Atom-1	Atom-2	Interatomic distance (Å)	Clash overlap (Å)
1:A:34:ARG:NH1	1:A:227:ALA:O[4_566]	2.14	0.06

5.3 Torsion angles [i](#)

5.3.1 Protein backbone [i](#)

In the following table, the Percentiles column shows the percent Ramachandran outliers of the chain as a percentile score with respect to all X-ray entries followed by that with respect to entries of similar resolution.

The Analysed column shows the number of residues for which the backbone conformation was analysed, and the total number of residues.

Mol	Chain	Analysed	Favoured	Allowed	Outliers	Percentiles
1	A	336/341 (98%)	330 (98%)	4 (1%)	2 (1%)	25 14

All (2) Ramachandran outliers are listed below:

Mol	Chain	Res	Type
1	A	224	PRO
1	A	215	TRP

5.3.2 Protein sidechains [i](#)

In the following table, the Percentiles column shows the percent sidechain outliers of the chain as a percentile score with respect to all X-ray entries followed by that with respect to entries of similar resolution.

The Analysed column shows the number of residues for which the sidechain conformation was analysed, and the total number of residues.

Mol	Chain	Analysed	Rotameric	Outliers	Percentiles
1	A	249/249 (100%)	248 (100%)	1 (0%)	91 90

All (1) residues with a non-rotameric sidechain are listed below:

Mol	Chain	Res	Type
1	A	95	ARG

Sometimes sidechains can be flipped to improve hydrogen bonding and reduce clashes. All (1) such sidechains are listed below:

Mol	Chain	Res	Type
1	A	331	HIS

5.3.3 RNA [i](#)

There are no RNA molecules in this entry.

5.4 Non-standard residues in protein, DNA, RNA chains [i](#)

There are no non-standard protein/DNA/RNA residues in this entry.

5.5 Carbohydrates [i](#)

There are no monosaccharides in this entry.

5.6 Ligand geometry [i](#)

3 ligands are modelled in this entry.

In the following table, the Counts columns list the number of bonds (or angles) for which Mogul statistics could be retrieved, the number of bonds (or angles) that are observed in the model and the number of bonds (or angles) that are defined in the Chemical Component Dictionary. The Link column lists molecule types, if any, to which the group is linked. The Z score for a bond length (or angle) is the number of standard deviations the observed value is removed from the expected value. A bond length (or angle) with $|Z| > 2$ is considered an outlier worth inspection. RMSZ is the root-mean-square of all Z scores of the bond lengths (or angles).

Mol	Type	Chain	Res	Link	Bond lengths			Bond angles		
					Counts	RMSZ	$\# Z > 2$	Counts	RMSZ	$\# Z > 2$
2	B12	A	401	1	90,101,101	1.22	8 (8%)	137,166,166	1.65	16 (11%)
4	PEG	A	403	-	6,6,6	0.11	0	5,5,5	0.14	0
3	BLA	A	402	-	42,46,46	1.38	5 (11%)	53,67,67	0.97	3 (5%)

In the following table, the Chirals column lists the number of chiral outliers, the number of chiral centers analysed, the number of these observed in the model and the number defined in the Chemical Component Dictionary. Similar counts are reported in the Torsion and Rings columns. '-' means no outliers of that kind were identified.

Mol	Type	Chain	Res	Link	Chirals	Torsions	Rings
2	B12	A	401	1	-	10/52/223/223	0/3/11/11
4	PEG	A	403	-	-	2/4/4/4	-
3	BLA	A	402	-	-	11/26/74/74	0/4/4/4

All (13) bond length outliers are listed below:

Mol	Chain	Res	Type	Atoms	Z	Observed(Å)	Ideal(Å)
3	A	402	BLA	CHA-C4D	5.55	1.39	1.35
2	A	401	B12	C14-N23	-4.40	1.29	1.35
2	A	401	B12	C9-N22	4.03	1.41	1.30
2	A	401	B12	C8B-C9B	3.51	1.47	1.40
2	A	401	B12	C6B-C5B	3.39	1.49	1.40
2	A	401	B12	C19-N24	-3.29	1.42	1.48
3	A	402	BLA	C3B-C2B	3.00	1.43	1.37
2	A	401	B12	O6R-C1R	2.87	1.45	1.41
2	A	401	B12	C16-C15	-2.77	1.36	1.44
3	A	402	BLA	CAC-C3C	-2.72	1.40	1.47
3	A	402	BLA	C3C-C2C	2.49	1.42	1.37
3	A	402	BLA	CAB-C3B	-2.38	1.40	1.47
2	A	401	B12	C10-C9	2.13	1.45	1.39

All (19) bond angle outliers are listed below:

Mol	Chain	Res	Type	Atoms	Z	Observed(°)	Ideal(°)
2	A	401	B12	C1-C19-N24	8.96	116.32	106.24
2	A	401	B12	C20-C1-C19	-7.40	102.22	109.36
2	A	401	B12	C18-C19-N24	5.84	111.20	102.31
2	A	401	B12	C1-C19-C18	4.86	129.86	121.88
2	A	401	B12	C2-C1-C19	3.82	124.63	118.60
2	A	401	B12	C13-C14-N23	3.23	113.49	109.10
2	A	401	B12	C13-C14-C15	-3.10	119.59	124.32
2	A	401	B12	C2-C1-N21	2.87	105.77	101.77
2	A	401	B12	C12-C11-C10	-2.65	119.92	123.37
2	A	401	B12	C60-C18-C19	2.55	121.27	114.62
2	A	401	B12	O58-C57-N59	-2.53	118.23	123.01
2	A	401	B12	C56-C57-N59	2.49	120.62	116.42
2	A	401	B12	C18-C60-C61	-2.40	107.98	113.97
2	A	401	B12	C17-C16-N24	-2.38	107.47	111.15
3	A	402	BLA	CHA-C4D-ND	-2.29	125.66	128.83
3	A	402	BLA	CMB-C2B-C1B	2.19	126.90	124.17
2	A	401	B12	O5-P-O3	2.17	115.36	106.78
2	A	401	B12	C9-C10-C11	-2.07	122.97	125.97
3	A	402	BLA	CMD-C2D-C1D	2.06	128.24	125.06

There are no chirality outliers.

All (23) torsion outliers are listed below:

Mol	Chain	Res	Type	Atoms
2	A	401	B12	N59-C1P-C2P-C3P

Continued on next page...

Continued from previous page...

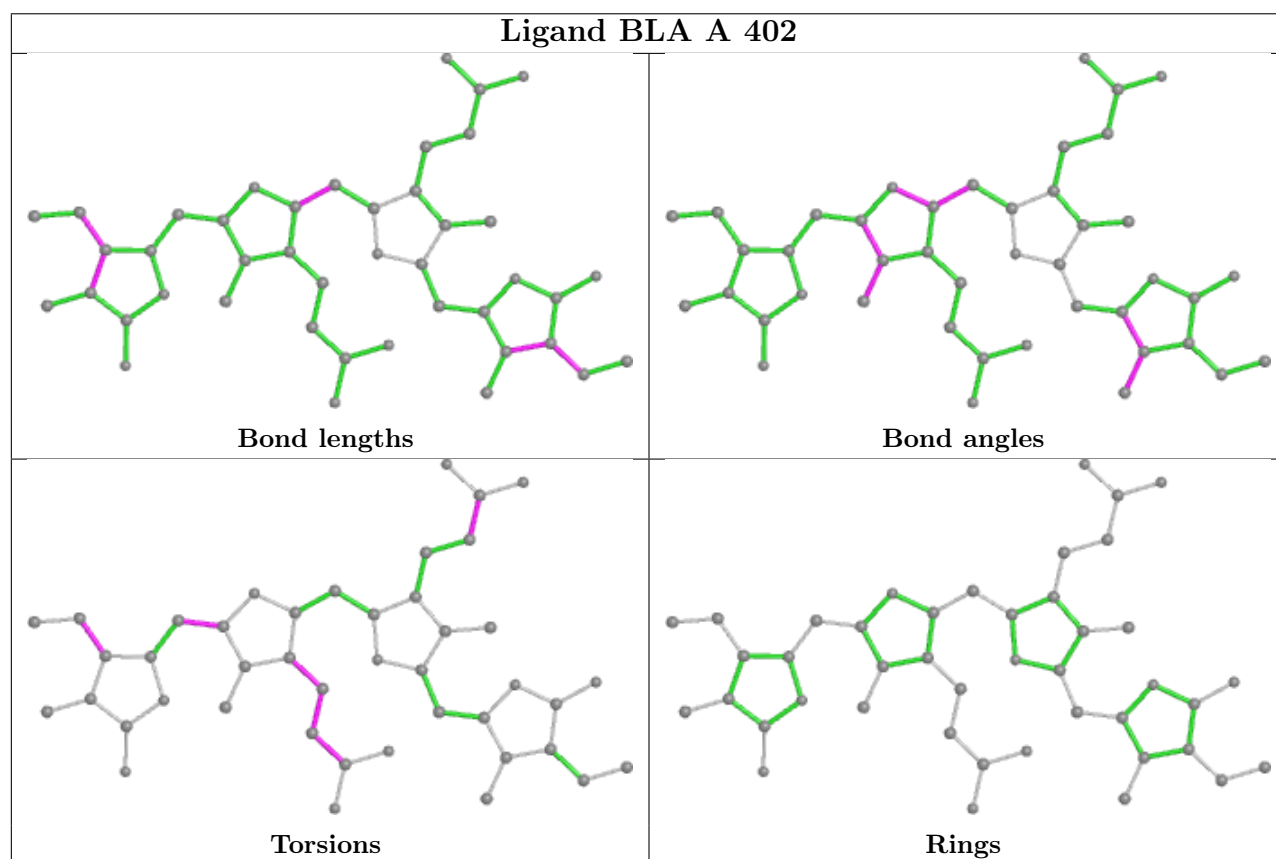
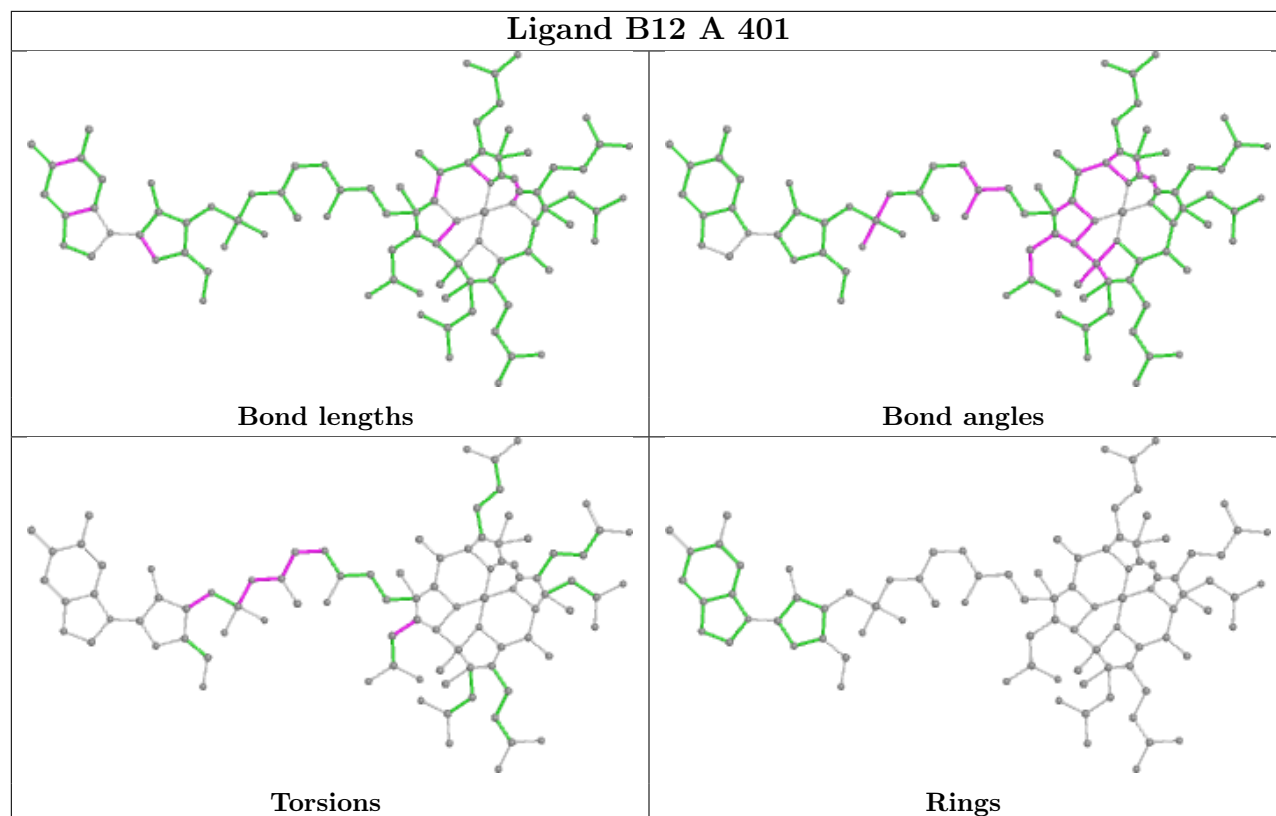
Mol	Chain	Res	Type	Atoms
2	A	401	B12	C2P-O3-P-O5
3	A	402	BLA	C2C-C3C-CAC-CBC
3	A	402	BLA	C4C-C3C-CAC-CBC
3	A	402	BLA	ND-C1D-CHD-C4C
3	A	402	BLA	C2D-C1D-CHD-C4C
4	A	403	PEG	O2-C3-C4-O4
4	A	403	PEG	O1-C1-C2-O2
3	A	402	BLA	C3D-CAD-CBD-CGD
2	A	401	B12	C2P-O3-P-O2
3	A	402	BLA	C4D-C3D-CAD-CBD
2	A	401	B12	C2P-O3-P-O4
3	A	402	BLA	C2D-C3D-CAD-CBD
2	A	401	B12	C2R-C3R-O2-P
2	A	401	B12	C1P-C2P-O3-P
2	A	401	B12	C3P-C2P-O3-P
2	A	401	B12	C17-C18-C60-C61
3	A	402	BLA	CAD-CBD-CGD-O2D
3	A	402	BLA	CAD-CBD-CGD-O1D
3	A	402	BLA	CAA-CBA-CGA-O2A
3	A	402	BLA	CAA-CBA-CGA-O1A
2	A	401	B12	C4R-C3R-O2-P
2	A	401	B12	C2P-C1P-N59-C57

There are no ring outliers.

2 monomers are involved in 9 short contacts:

Mol	Chain	Res	Type	Clashes	Symm-Clashes
2	A	401	B12	8	0
3	A	402	BLA	1	0

The following is a two-dimensional graphical depiction of Mogul quality analysis of bond lengths, bond angles, torsion angles, and ring geometry for all instances of the Ligand of Interest. In addition, ligands with molecular weight > 250 and outliers as shown on the validation Tables will also be included. For torsion angles, if less than 5% of the Mogul distribution of torsion angles is within 10 degrees of the torsion angle in question, then that torsion angle is considered an outlier. Any bond that is central to one or more torsion angles identified as an outlier by Mogul will be highlighted in the graph. For rings, the root-mean-square deviation (RMSD) between the ring in question and similar rings identified by Mogul is calculated over all ring torsion angles. If the average RMSD is greater than 60 degrees and the minimal RMSD between the ring in question and any Mogul-identified rings is also greater than 60 degrees, then that ring is considered an outlier. The outliers are highlighted in purple. The color gray indicates Mogul did not find sufficient equivalents in the CSD to analyse the geometry.



5.7 Other polymers [i](#)

There are no such residues in this entry.

5.8 Polymer linkage issues [i](#)

There are no chain breaks in this entry.

6 Fit of model and data [i](#)

6.1 Protein, DNA and RNA chains [i](#)

In the following table, the column labelled ‘#RSRZ> 2’ contains the number (and percentage) of RSRZ outliers, followed by percent RSRZ outliers for the chain as percentile scores relative to all X-ray entries and entries of similar resolution. The OWAB column contains the minimum, median, 95th percentile and maximum values of the occupancy-weighted average B-factor per residue. The column labelled ‘Q< 0.9’ lists the number of (and percentage) of residues with an average occupancy less than 0.9.

Mol	Chain	Analysed	<RSRZ>	#RSRZ>2	OWAB(Å ²)	Q<0.9
1	A	337/341 (98%)	0.64	15 (4%) 33 35	40, 54, 95, 153	0

All (15) RSRZ outliers are listed below:

Mol	Chain	Res	Type	RSRZ
1	A	216	PRO	9.2
1	A	221	PRO	7.9
1	A	215	TRP	7.3
1	A	223	PRO	6.5
1	A	224	PRO	5.2
1	A	346	HIS	4.0
1	A	213	PRO	3.8
1	A	222	ALA	3.4
1	A	212	ARG	3.3
1	A	6	VAL	2.6
1	A	264	LEU	2.6
1	A	144	GLU	2.5
1	A	214	GLU	2.5
1	A	345	HIS	2.4
1	A	252	TRP	2.2

6.2 Non-standard residues in protein, DNA, RNA chains [i](#)

There are no non-standard protein/DNA/RNA residues in this entry.

6.3 Carbohydrates [i](#)

There are no monosaccharides in this entry.

6.4 Ligands

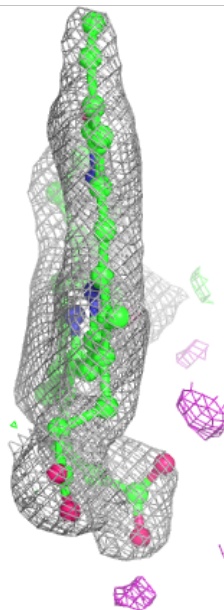
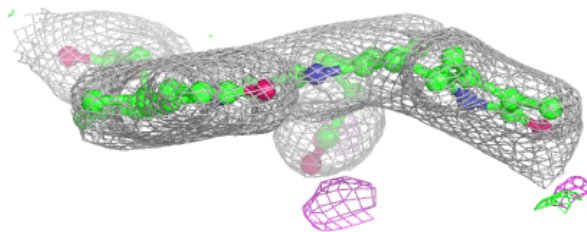
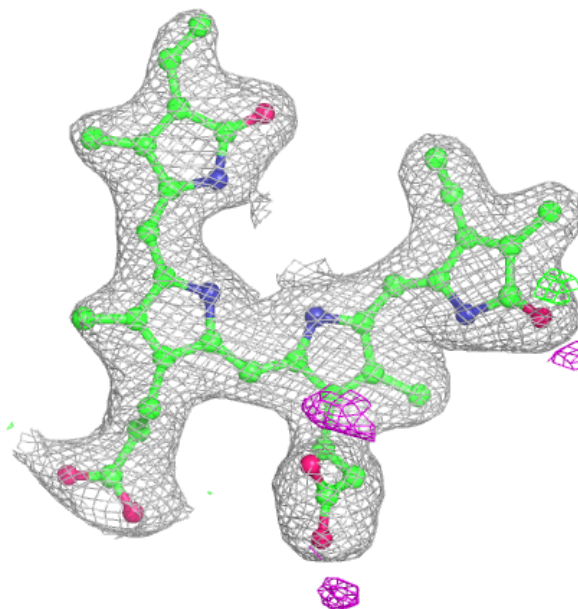
In the following table, the Atoms column lists the number of modelled atoms in the group and the number defined in the chemical component dictionary. The B-factors column lists the minimum, median, 95th percentile and maximum values of B factors of atoms in the group. The column labelled 'Q< 0.9' lists the number of atoms with occupancy less than 0.9.

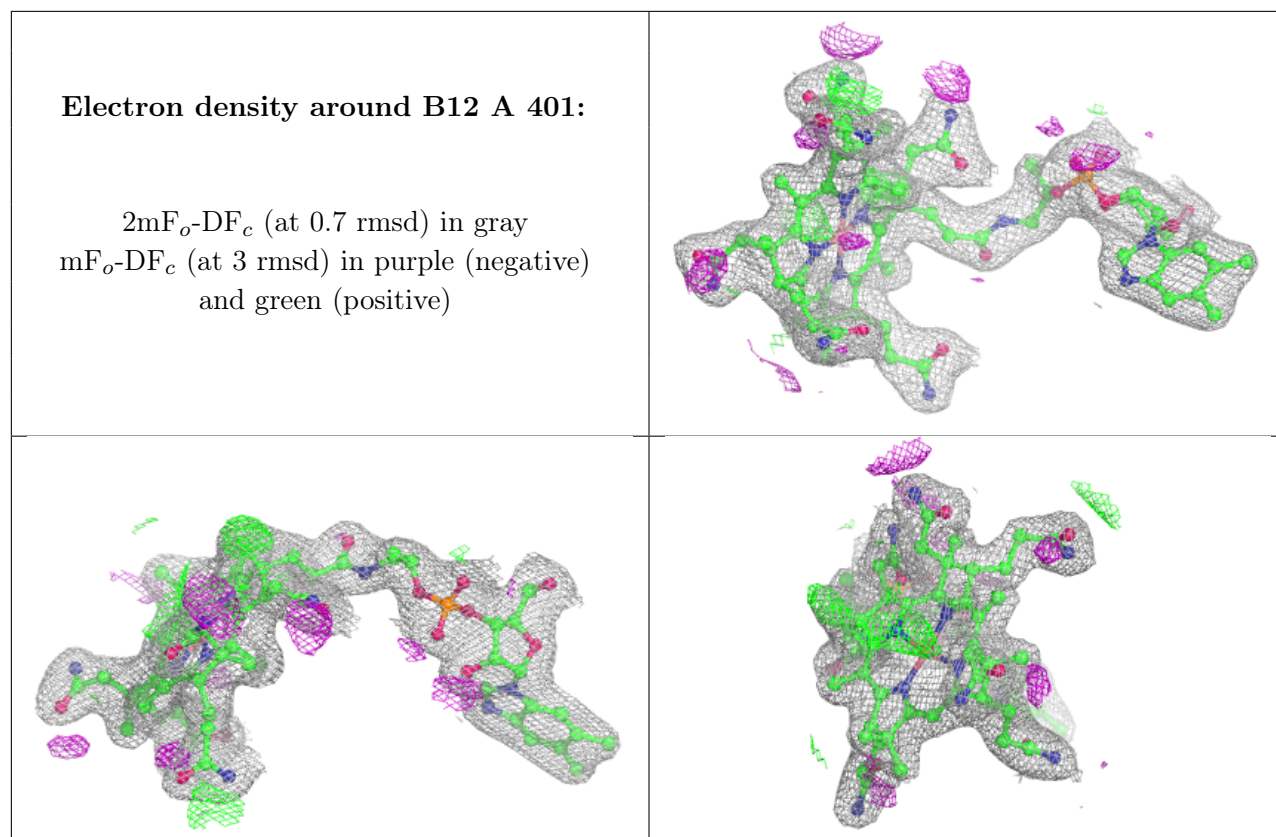
Mol	Type	Chain	Res	Atoms	RSCC	RSR	B-factors(Å ²)	Q<0.9
4	PEG	A	403	7/7	0.93	0.15	61,65,70,71	0
3	BLA	A	402	43/43	0.96	0.13	46,54,66,86	0
2	B12	A	401	91/91	0.97	0.13	37,44,55,59	0

The following is a graphical depiction of the model fit to experimental electron density of all instances of the Ligand of Interest. In addition, ligands with molecular weight > 250 and outliers as shown on the geometry validation Tables will also be included. Each fit is shown from different orientation to approximate a three-dimensional view.

Electron density around BLA A 402:

$2mF_o-DF_c$ (at 0.7 rmsd) in gray
 mF_o-DF_c (at 3 rmsd) in purple (negative)
and green (positive)





6.5 Other polymers [i](#)

There are no such residues in this entry.