



Full wwPDB EM Validation Report ⓘ

Feb 12, 2024 – 01:56 PM EST

PDB ID : 3IYD
EMDB ID : EMD-5127
Title : Three-dimensional EM structure of an intact activator-dependent transcription initiation complex
Authors : Hudson, B.P.; Quispe, J.; Lara, S.; Kim, Y.; Berman, H.; Arnold, E.; Ebright, R.H.; Lawson, C.L.
Deposited on : 2009-08-01
Resolution : 19.80 Å (reported)
Based on initial models : 1LB2, 1BDF, 2AUK, 1SIG, 3DXJ

This is a Full wwPDB EM Validation Report for a publicly released PDB entry.

We welcome your comments at validation@mail.wwpdb.org

A user guide is available at

<https://www.wwpdb.org/validation/2017/EMValidationReportHelp>

with specific help available everywhere you see the ⓘ symbol.

The types of validation reports are described at

<http://www.wwpdb.org/validation/2017/FAQs#types>.

The following versions of software and data (see [references ⓘ](#)) were used in the production of this report:

EMDB validation analysis : 0.0.1.dev70
Mogul : 1.8.5 (274361), CSD as541be (2020)
MolProbity : 4.02b-467
buster-report : 1.1.7 (2018)
Percentile statistics : 20191225.v01 (using entries in the PDB archive December 25th 2019)
MapQ : 1.9.9
Ideal geometry (proteins) : Engh & Huber (2001)
Ideal geometry (DNA, RNA) : Parkinson et al. (1996)
Validation Pipeline (wwPDB-VP) : 2.36

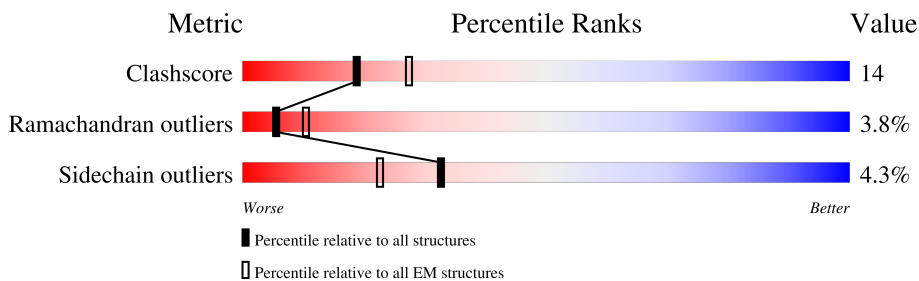
1 Overall quality at a glance i

The following experimental techniques were used to determine the structure:

ELECTRON MICROSCOPY

The reported resolution of this entry is 19.80 Å.

Percentile scores (ranging between 0-100) for global validation metrics of the entry are shown in the following graphic. The table shows the number of entries on which the scores are based.





Metric	Whole archive (#Entries)	EM structures (#Entries)
Clashscore	158937	4297
Ramachandran outliers	154571	4023
Sidechain outliers	154315	3826

The table below summarises the geometric issues observed across the polymeric chains and their fit to the map. The red, orange, yellow and green segments of the bar indicate the fraction of residues that contain outliers for ≥ 3 , 2, 1 and 0 types of geometric quality criteria respectively. A grey segment represents the fraction of residues that are not modelled. The numeric value for each fraction is indicated below the corresponding segment, with a dot representing fractions $\leq 5\%$. The upper red bar (where present) indicates the fraction of residues that have poor fit to the EM map (all-atom inclusion $< 40\%$). The numeric value is given above the bar.

Mol	Chain	Length	Quality of chain
1	A	329	
1	B	329	
2	C	1342	
3	D	1413	
4	E	90	
5	F	613	
6	G	209	
6	H	209	

Continued on next page...

Continued from previous page...

Mol	Chain	Length	Quality of chain
7	I	98	
8	J	98	

2 Entry composition

There are 9 unique types of molecules in this entry. The entry contains 35254 atoms, of which 0 are hydrogens and 0 are deuteriums.

In the tables below, the AltConf column contains the number of residues with at least one atom in alternate conformation and the Trace column contains the number of residues modelled with at most 2 atoms.

- Molecule 1 is a protein called DNA-directed RNA polymerase subunit alpha.

Mol	Chain	Residues	Atoms					AltConf	Trace
			Total	C	N	O	S		
1	A	322	Total	C	N	O	S	0	0
			2496	1563	438	487	8		
1	B	235	Total	C	N	O	S	0	0
			1814	1129	320	358	7		

- Molecule 2 is a protein called DNA-directed RNA polymerase subunit beta.

Mol	Chain	Residues	Atoms					AltConf	Trace
			Total	C	N	O	S		
2	C	1089	Total	C	N	O	S	0	0
			8524	5351	1481	1655	37		

- Molecule 3 is a protein called DNA-directed RNA polymerase subunit beta.

Mol	Chain	Residues	Atoms					AltConf	Trace
			Total	C	N	O	S		
3	D	1368	Total	C	N	O	S	0	0
			10606	6657	1893	2006	50		

There are 6 discrepancies between the modelled and reference sequences:

Chain	Residue	Modelled	Actual	Comment	Reference
D	1408	HIS	-	expression tag	UNP P0A8T7
D	1409	HIS	-	expression tag	UNP P0A8T7
D	1410	HIS	-	expression tag	UNP P0A8T7
D	1411	HIS	-	expression tag	UNP P0A8T7
D	1412	HIS	-	expression tag	UNP P0A8T7
D	1413	HIS	-	expression tag	UNP P0A8T7

- Molecule 4 is a protein called DNA-directed RNA polymerase subunit omega.

Mol	Chain	Residues	Atoms					AltConf	Trace
			Total	C	N	O	S		
4	E	90	Total	C	N	O	S	0	0
			709	430	136	142	1		

- Molecule 5 is a protein called RNA polymerase sigma factor rpoD.

Mol	Chain	Residues	Atoms					AltConf	Trace
			Total	C	N	O	S		
5	F	479	3877	2423	693	740	21	0	0

There are 2 discrepancies between the modelled and reference sequences:

Chain	Residue	Modelled	Actual	Comment	Reference
F	149	ASN	ASP	conflict	UNP P00579
F	571	HIS	TYR	conflict	UNP P00579

- Molecule 6 is a protein called Catabolite gene activator.

Mol	Chain	Residues	Atoms					AltConf	Trace
			Total	C	N	O	S		
6	G	201	1591	1007	280	295	9	0	0
6	H	201	1591	1007	280	295	9	0	0

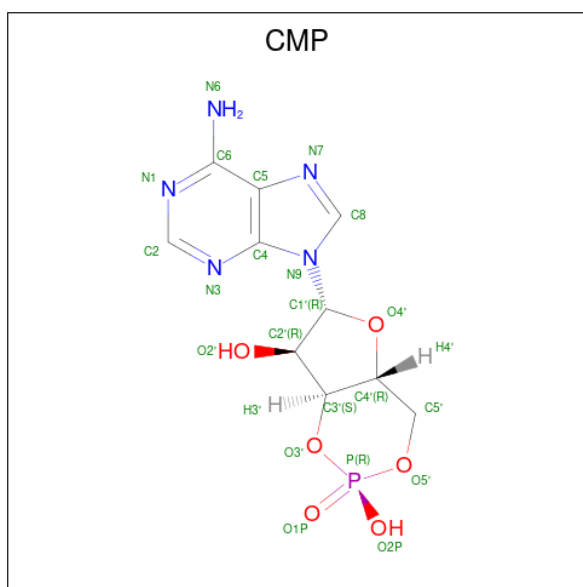
- Molecule 7 is a DNA chain called DNA (98-MER).

Mol	Chain	Residues	Atoms					AltConf	Trace
			Total	C	N	O	P		
7	I	98	2006	960	366	583	97	0	0

- Molecule 8 is a DNA chain called DNA (98-MER).

Mol	Chain	Residues	Atoms					AltConf	Trace
			Total	C	N	O	P		
8	J	98	1996	958	353	588	97	0	0

- Molecule 9 is ADENOSINE-3',5'-CYCLIC-MONOPHOSPHATE (three-letter code: CMP) (formula: C₁₀H₁₂N₅O₆P).

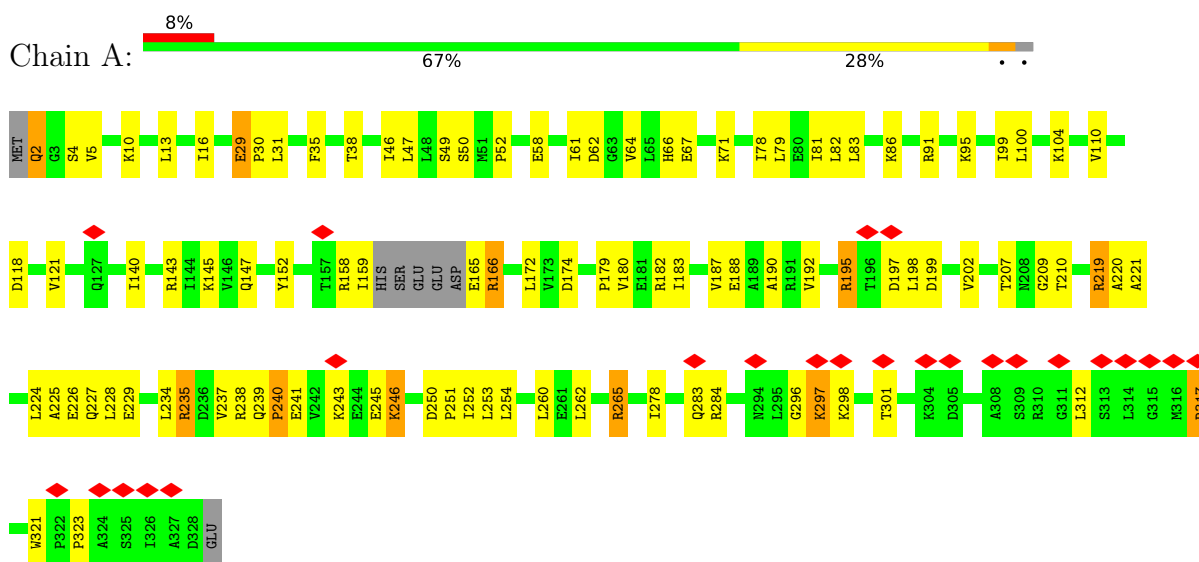


Mol	Chain	Residues	Atoms					AltConf
			Total	C	N	O	P	
9	G	1	Total	C	N	O	P	0
			22	10	5	6	1	
9	H	1	Total	C	N	O	P	0
			22	10	5	6	1	

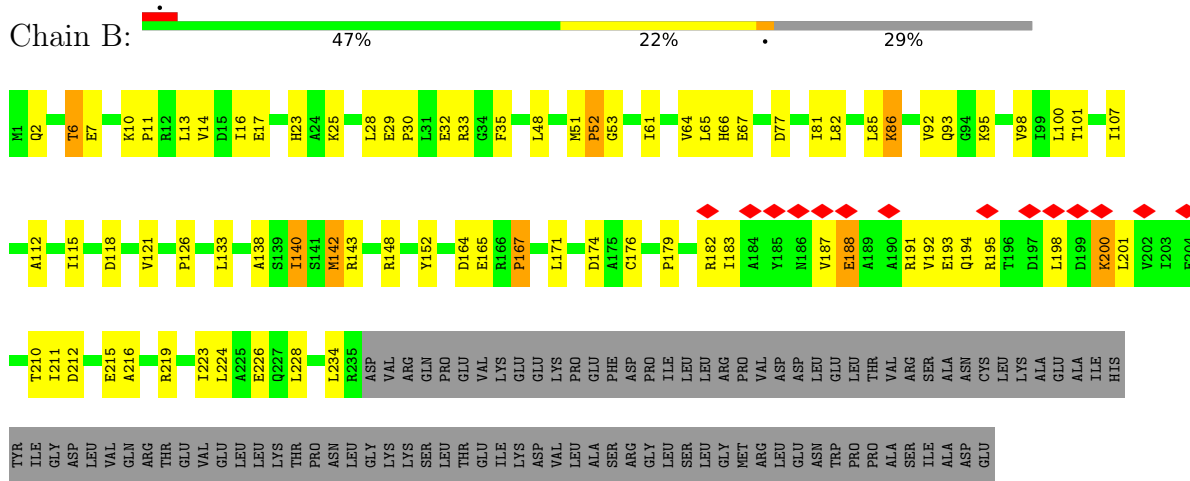
3 Residue-property plots

These plots are drawn for all protein, RNA, DNA and oligosaccharide chains in the entry. The first graphic for a chain summarises the proportions of the various outlier classes displayed in the second graphic. The second graphic shows the sequence view annotated by issues in geometry and atom inclusion in map density. Residues are color-coded according to the number of geometric quality criteria for which they contain at least one outlier: green = 0, yellow = 1, orange = 2 and red = 3 or more. A red diamond above a residue indicates a poor fit to the EM map for this residue (all-atom inclusion < 40%). Stretches of 2 or more consecutive residues without any outlier are shown as a green connector. Residues present in the sample, but not in the model, are shown in grey.

- Molecule 1: DNA-directed RNA polymerase subunit alpha

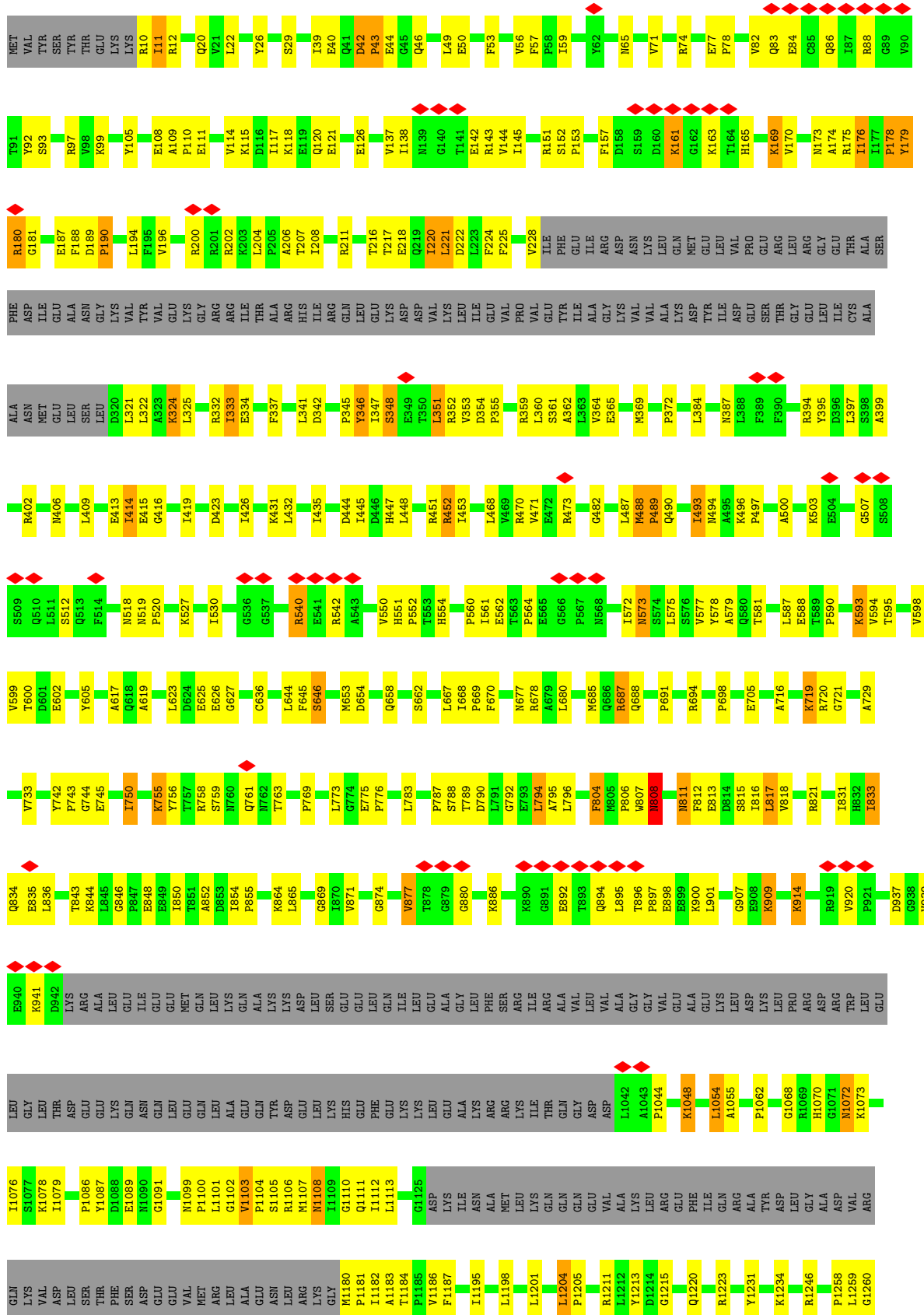


- Molecule 1: DNA-directed RNA polymerase subunit alpha



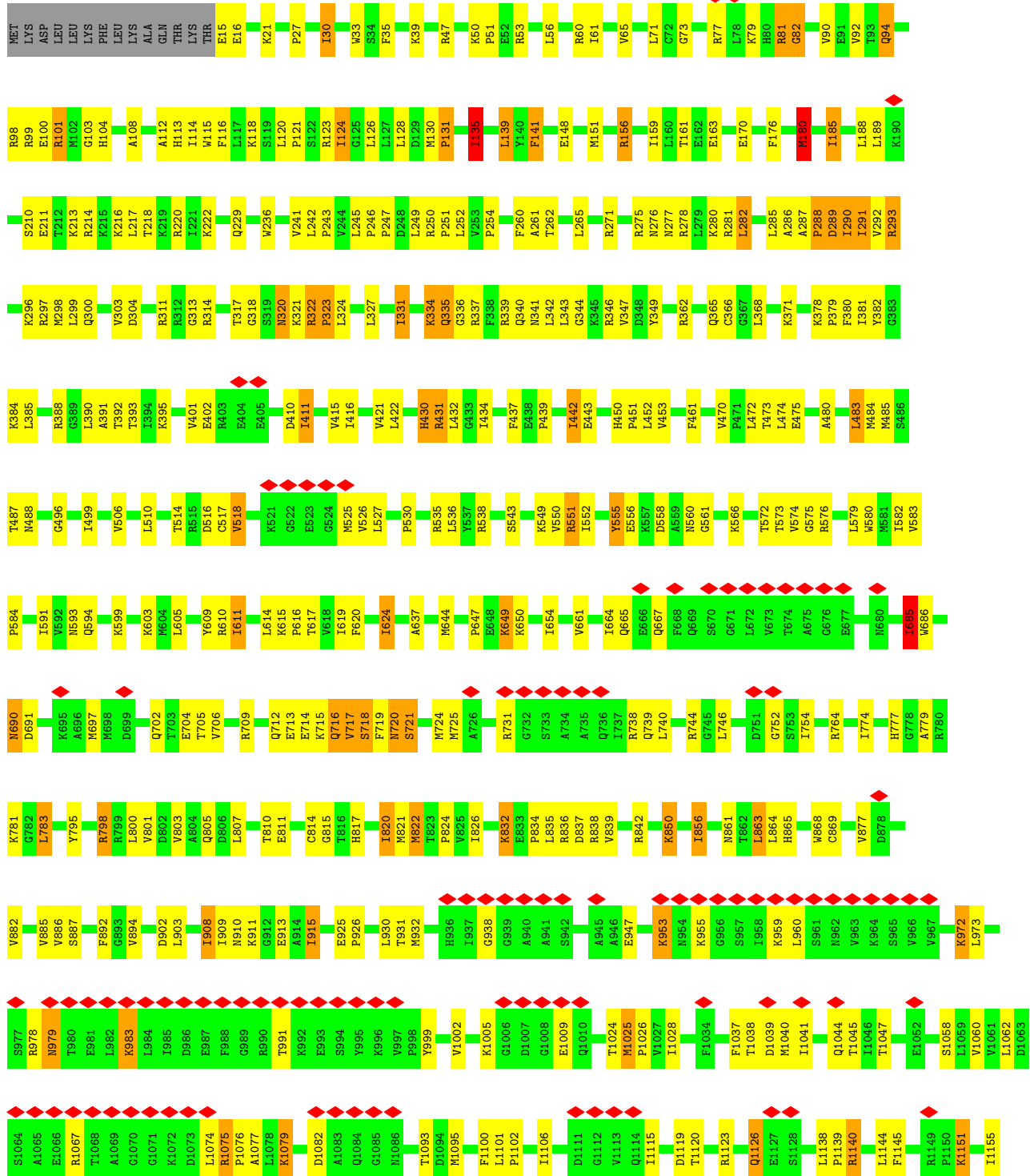
- Molecule 2: DNA-directed RNA polymerase subunit beta

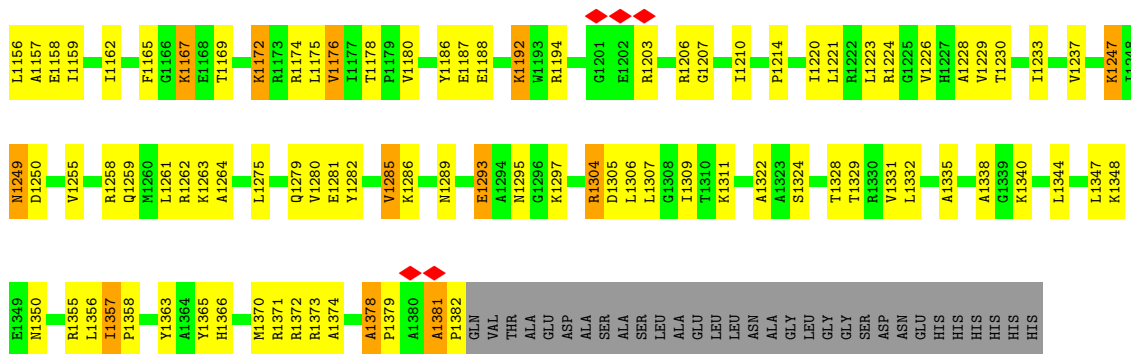






• Molecule 3: DNA-directed RNA polymerase subunit beta

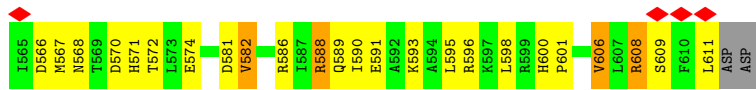
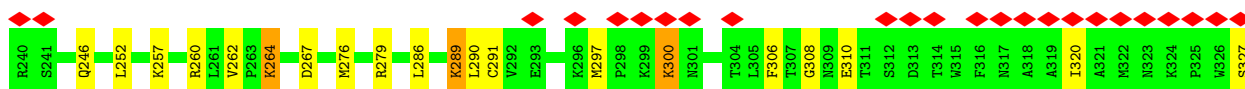
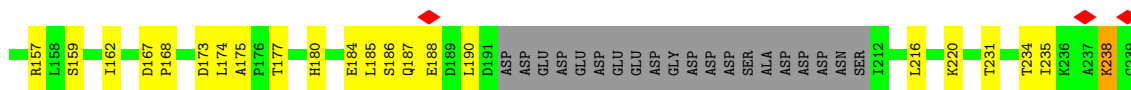
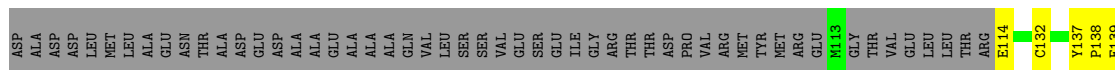




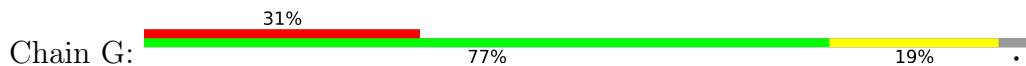
• Molecule 4: DNA-directed RNA polymerase subunit omega

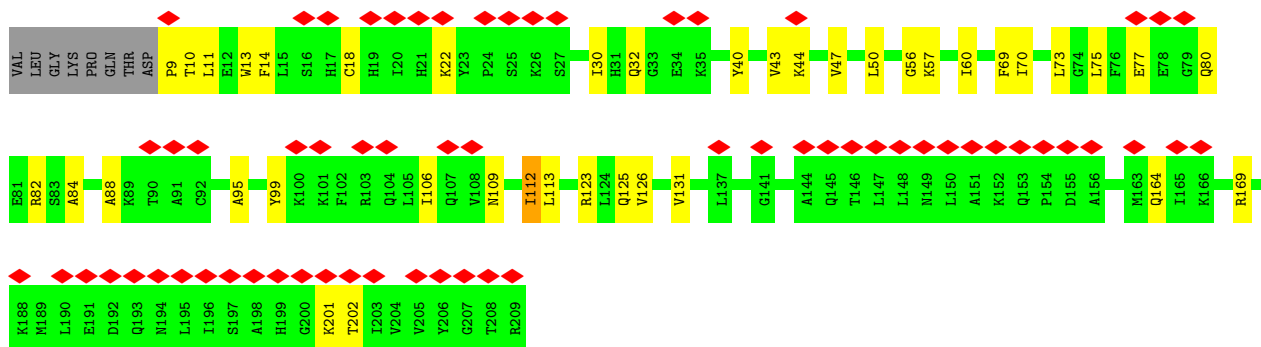


• Molecule 5: RNA polymerase sigma factor rpoD

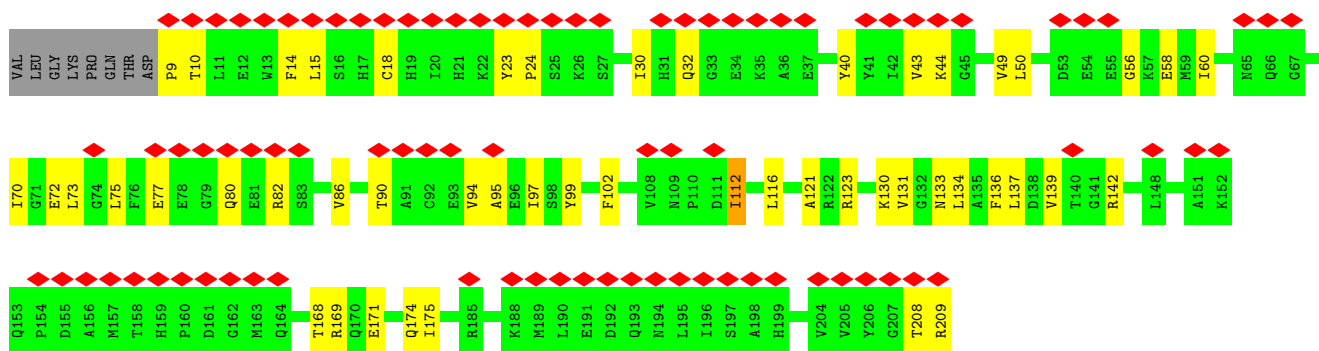
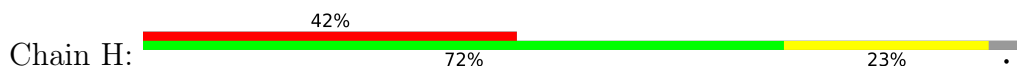


• Molecule 6: Catabolite gene activator

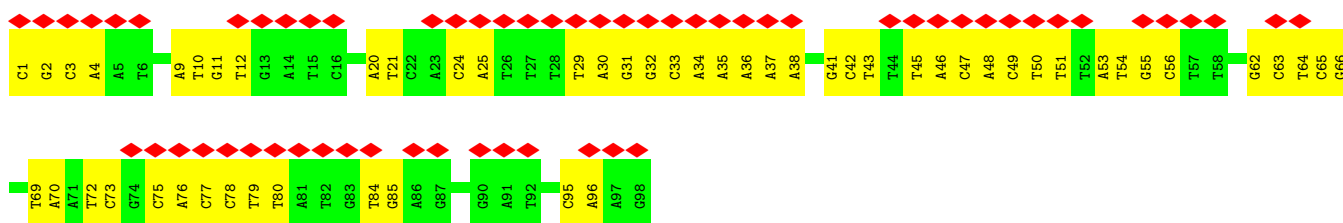




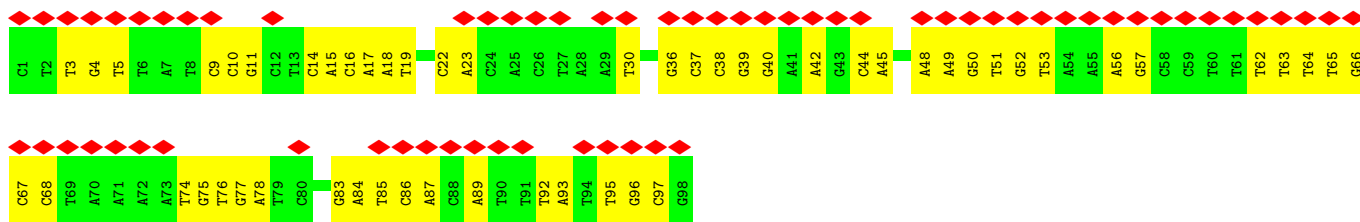
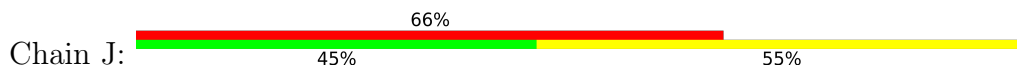
• Molecule 6: Catabolite gene activator



• Molecule 7: DNA (98-MER)



• Molecule 8: DNA (98-MER)



4 Experimental information

Property	Value	Source
EM reconstruction method	SINGLE PARTICLE	Depositor
Imposed symmetry	POINT, C1	Depositor
Number of particles used	14097	Depositor
Resolution determination method	FSC 0.5 CUT-OFF	Depositor
CTF correction method	ACE	Depositor
Microscope	FEI TECNAI F20	Depositor
Voltage (kV)	120	Depositor
Electron dose ($e^-/\text{\AA}^2$)	16	Depositor
Minimum defocus (nm)	500	Depositor
Maximum defocus (nm)	1500	Depositor
Magnification	50000	Depositor
Image detector	TVIPS TEMCAM-F415 (4k x 4k)	Depositor
Maximum map value	14.395	Depositor
Minimum map value	-3.341	Depositor
Average map value	0.000	Depositor
Map value standard deviation	0.903	Depositor
Recommended contour level	2.8	Depositor
Map size (\AA)	371.19998, 371.19998, 371.19998	wwPDB
Map dimensions	80, 80, 80	wwPDB
Map angles ($^\circ$)	90.0, 90.0, 90.0	wwPDB
Pixel spacing (\AA)	4.64, 4.64, 4.64	Depositor

5 Model quality

5.1 Standard geometry

Bond lengths and bond angles in the following residue types are not validated in this section: CMP

The Z score for a bond length (or angle) is the number of standard deviations the observed value is removed from the expected value. A bond length (or angle) with $|Z| > 5$ is considered an outlier worth inspection. RMSZ is the root-mean-square of all Z scores of the bond lengths (or angles).

Mol	Chain	Bond lengths		Bond angles	
		RMSZ	# Z >5	RMSZ	# Z >5
1	A	0.19	0/2528	0.36	0/3427
1	B	0.19	0/1836	0.35	0/2488
2	C	0.20	0/8672	0.35	0/11722
3	D	0.19	0/10769	0.35	0/14544
4	E	0.19	0/711	0.34	0/956
5	F	0.20	0/3931	0.34	0/5288
6	G	0.20	0/1616	0.33	0/2174
6	H	0.20	0/1616	0.33	0/2174
7	I	0.45	0/2251	0.93	0/3472
8	J	0.44	0/2236	0.93	0/3447
All	All	0.24	0/36166	0.47	0/49692

There are no bond length outliers.

There are no bond angle outliers.

There are no chirality outliers.

There are no planarity outliers.

5.2 Too-close contacts

In the following table, the Non-H and H(model) columns list the number of non-hydrogen atoms and hydrogen atoms in the chain respectively. The H(added) column lists the number of hydrogen atoms added and optimized by MolProbity. The Clashes column lists the number of clashes within the asymmetric unit, whereas Symm-Clashes lists symmetry-related clashes.

Mol	Chain	Non-H	H(model)	H(added)	Clashes	Symm-Clashes
1	A	2496	0	2554	74	0
1	B	1814	0	1839	60	0
2	C	8524	0	8491	275	0

Continued on next page...

Continued from previous page...

Mol	Chain	Non-H	H(model)	H(added)	Clashes	Symm-Clashes
3	D	10606	0	10822	387	0
4	E	709	0	719	37	0
5	F	3877	0	3929	89	0
6	G	1591	0	1632	28	0
6	H	1591	0	1632	34	0
7	I	2006	0	1108	45	0
8	J	1996	0	1111	45	0
9	G	22	0	11	3	0
9	H	22	0	11	2	0
All	All	35254	0	33859	996	0

The all-atom clashscore is defined as the number of clashes found per 1000 atoms (including hydrogen atoms). The all-atom clashscore for this structure is 14.

All (996) close contacts within the same asymmetric unit are listed below, sorted by their clash magnitude.

Atom-1	Atom-2	Interatomic distance (Å)	Clash overlap (Å)
9:G:679:CMP:H2	9:G:679:CMP:C2	0.97	1.49
9:H:680:CMP:C2	9:H:680:CMP:H2	0.97	1.49
4:E:59:ILE:HG12	4:E:60:ASN:H	1.45	0.81
3:D:1378:ALA:H	3:D:1379:PRO:HD3	1.45	0.81
1:A:235:ARG:H	1:A:235:ARG:HD2	1.45	0.80
3:D:550:VAL:HA	3:D:551:ARG:HH21	1.46	0.80
4:E:46:THR:HG21	4:E:58:LEU:HD23	1.64	0.79
2:C:1329:GLU:HB3	3:D:331:ILE:HD12	1.64	0.79
3:D:56:LEU:HD21	3:D:250:ARG:HH22	1.47	0.78
2:C:414:ILE:HG23	2:C:416:GLY:H	1.47	0.78
3:D:863:LEU:HD13	3:D:863:LEU:H	1.50	0.77
2:C:1269:ARG:HA	3:D:346:ARG:HA	1.67	0.76
3:D:210:SER:HA	3:D:214:ARG:HB3	1.68	0.76
1:B:192:VAL:HG13	1:B:194:GLN:H	1.49	0.75
1:A:283:GLN:HG3	1:A:284:ARG:HD2	1.67	0.75
3:D:611:ILE:HD13	3:D:611:ILE:H	1.49	0.74
1:A:297:LYS:H	1:A:297:LYS:HD3	1.51	0.74
1:B:92:VAL:HB	1:B:148:ARG:HH22	1.53	0.74
5:F:184:GLU:HG2	5:F:373:ARG:HG3	1.70	0.74
2:C:1068:GLY:H	2:C:1072:ASN:HD21	1.33	0.74
2:C:220:ILE:H	2:C:220:ILE:HD13	1.55	0.72
2:C:1330:ILE:HD12	2:C:1333:LEU:HD12	1.71	0.72
2:C:806:PRO:HD3	2:C:1100:PRO:HG2	1.72	0.72
3:D:1378:ALA:H	3:D:1379:PRO:CD	2.02	0.71

Continued on next page...

Continued from previous page...

Atom-1	Atom-2	Interatomic distance (Å)	Clash overlap (Å)
5:F:354:THR:HB	5:F:357:GLN:HG2	1.72	0.71
2:C:880:GLY:H	2:C:920:VAL:HB	1.56	0.71
1:A:104:LYS:HD3	1:A:110:VAL:HG22	1.73	0.70
3:D:254:PRO:HA	3:D:260:PHE:HA	1.73	0.70
2:C:789:THR:HA	2:C:795:ALA:HB3	1.74	0.70
3:D:719:PHE:HB3	3:D:725:MET:HG3	1.73	0.70
6:H:123:ARG:HD3	9:H:680:CMP:H2	1.73	0.70
2:C:755:LYS:HD2	2:C:756:TYR:H	1.57	0.69
3:D:1279:GLN:HG3	3:D:1281:GLU:H	1.55	0.69
1:A:317:ARG:HD3	1:A:317:ARG:H	1.56	0.69
3:D:415:VAL:HG13	3:D:416:ILE:HG13	1.73	0.69
5:F:167:ASP:HB3	5:F:168:PRO:HD3	1.75	0.69
1:B:11:PRO:HB2	1:B:28:LEU:HD11	1.75	0.68
2:C:598:VAL:HG12	2:C:627:GLY:HA2	1.75	0.68
1:A:62:ASP:HB2	1:A:143:ARG:HH12	1.59	0.68
1:A:195:ARG:HD2	1:A:198:LEU:HG	1.75	0.68
3:D:886:VAL:HG11	3:D:1230:THR:HG21	1.74	0.68
3:D:1366:HIS:HE1	4:E:18:ASP:HA	1.59	0.68
2:C:194:LEU:HD13	2:C:206:ALA:HB3	1.77	0.67
2:C:352:ARG:HG3	2:C:359:ARG:HD3	1.74	0.67
3:D:774:ILE:HA	3:D:777:HIS:HD2	1.59	0.67
2:C:351:LEU:HD12	2:C:353:VAL:HG22	1.76	0.67
3:D:337:ARG:HB3	8:J:16:DC:H2 ⁷	1.77	0.67
3:D:320:ASN:HD22	3:D:322:ARG:HH12	1.42	0.67
2:C:1102:GLY:HA2	3:D:718:SER:HB2	1.77	0.67
7:I:42:DC:H2 ⁷	7:I:43:DT:O5 ⁷	1.95	0.67
1:A:100:LEU:HD11	1:A:121:VAL:HG21	1.75	0.66
1:B:66:HIS:CD2	1:B:67:GLU:H	2.13	0.66
3:D:216:LYS:HE2	3:D:220:ARG:HH21	1.60	0.66
3:D:430:HIS:HD2	3:D:432:LEU:H	1.43	0.66
3:D:834:PRO:HB3	3:D:838:ARG:HH22	1.59	0.66
3:D:1115:ILE:HG23	3:D:1119:ASP:HB2	1.78	0.66
5:F:530:LEU:HD13	5:F:532:LEU:HB3	1.77	0.66
3:D:1221:LEU:HD13	3:D:1306:LEU:HD23	1.77	0.66
2:C:1062:PRO:HA	2:C:1076:ILE:HG23	1.78	0.66
5:F:354:THR:H	5:F:357:GLN:HE21	1.43	0.66
3:D:334:LYS:HE3	3:D:334:LYS:HA	1.78	0.65
1:A:29:GLU:HB3	1:A:30:PRO:HD3	1.77	0.65
2:C:170:VAL:HG22	2:C:435:ILE:HG12	1.78	0.65
3:D:1151:LYS:HD3	3:D:1151:LYS:H	1.61	0.65
2:C:813:GLU:HB3	3:D:461:PHE:HD1	1.60	0.65

Continued on next page...

Continued from previous page...

Atom-1	Atom-2	Interatomic distance (Å)	Clash overlap (Å)
1:B:140:ILE:HD13	1:B:140:ILE:H	1.62	0.65
5:F:262:VAL:HG12	5:F:264:LYS:H	1.61	0.65
5:F:541:ARG:HA	5:F:606:VAL:HA	1.77	0.65
5:F:397:ARG:HH22	8:J:30:DT:H2'	1.61	0.64
6:G:125:GLN:HE21	6:H:73:LEU:HD13	1.62	0.64
3:D:378:LYS:HB3	3:D:379:PRO:HD3	1.79	0.64
1:B:65:LEU:HD23	1:B:65:LEU:H	1.61	0.64
3:D:100:GLU:O	3:D:101:ARG:HG2	1.97	0.64
3:D:925:GLU:HG3	3:D:926:PRO:HD3	1.78	0.64
4:E:85:ALA:O	4:E:86:ILE:HG12	1.97	0.64
3:D:480:ALA:HA	3:D:484:MET:HB2	1.78	0.64
1:B:53:GLY:HA2	1:B:210:THR:HG21	1.79	0.64
3:D:1378:ALA:N	3:D:1379:PRO:CD	2.60	0.64
2:C:817:LEU:HD13	2:C:817:LEU:H	1.63	0.64
3:D:864:LEU:HD11	3:D:869:CYS:HB2	1.78	0.64
5:F:455:HIS:HB3	7:I:63:DC:H41	1.62	0.64
1:B:200:LYS:H	1:B:200:LYS:HD3	1.63	0.64
3:D:518:VAL:HG12	3:D:536:LEU:HD13	1.79	0.64
6:H:50:LEU:HB3	6:H:60:ILE:HG12	1.80	0.64
3:D:82:GLY:HA2	3:D:92:VAL:HB	1.80	0.64
3:D:475:GLU:HG2	4:E:24:ALA:HB1	1.78	0.64
3:D:911:LYS:HE3	3:D:1365:TYR:HB3	1.80	0.64
3:D:573:THR:HG23	3:D:575:GLY:H	1.63	0.64
3:D:908:ILE:HD13	3:D:909:ILE:N	2.13	0.64
2:C:909:LYS:HE2	2:C:909:LYS:HA	1.81	0.63
1:B:6:THR:HG23	1:B:7:GLU:H	1.63	0.63
1:B:187:VAL:HG13	1:B:188:GLU:H	1.63	0.63
3:D:71:LEU:HD23	3:D:71:LEU:H	1.62	0.63
3:D:339:ARG:HH21	8:J:17:DA:H4'	1.64	0.63
3:D:1289:ASN:HA	3:D:1293:GLU:HB3	1.79	0.63
2:C:74:ARG:HB3	2:C:97:ARG:HB2	1.79	0.63
2:C:1108:ASN:HD22	2:C:1108:ASN:H	1.45	0.63
6:H:168:THR:HG21	7:I:9:DA:H5''	1.80	0.63
2:C:360:LEU:HA	2:C:365:GLU:HG3	1.80	0.63
3:D:573:THR:HG22	3:D:576:ARG:HG2	1.81	0.62
3:D:1366:HIS:CE1	4:E:18:ASP:HA	2.34	0.62
3:D:664:ILE:HD12	3:D:667:GLN:HE21	1.65	0.62
5:F:505:ILE:HD13	5:F:506:SER:N	2.14	0.62
2:C:151:ARG:HA	2:C:451:ARG:HG2	1.80	0.62
2:C:342:ASP:HA	2:C:351:LEU:HD23	1.80	0.62
3:D:113:HIS:CD2	3:D:115:TRP:H	2.17	0.62

Continued on next page...

Continued from previous page...

Atom-1	Atom-2	Interatomic distance (Å)	Clash overlap (Å)
2:C:720:ARG:HE	2:C:721:GLY:H	1.47	0.62
3:D:347:VAL:HG12	3:D:349:TYR:H	1.65	0.62
3:D:510:LEU:HD11	3:D:624:ILE:HG12	1.80	0.62
2:C:180:ARG:O	2:C:180:ARG:HD3	1.99	0.62
2:C:742:TYR:HB3	2:C:745:GLU:HB2	1.82	0.62
1:A:296:GLY:HA3	8:J:64:DT:H5'	1.82	0.61
2:C:850:ILE:HD13	2:C:1048:LYS:HE2	1.81	0.61
3:D:1024:THR:HG21	3:D:1123:ARG:HD3	1.81	0.61
6:H:32:GLN:HA	6:H:82:ARG:HB2	1.82	0.61
3:D:430:HIS:CD2	3:D:432:LEU:HB2	2.36	0.61
5:F:600:HIS:HB3	5:F:601:PRO:HD3	1.81	0.61
2:C:617:ALA:HB3	2:C:653:MET:HG2	1.82	0.61
3:D:1060:VAL:HG22	3:D:1106:ILE:HG22	1.82	0.61
5:F:586:ARG:HB3	5:F:590:ILE:HG13	1.81	0.61
2:C:773:LEU:HD23	2:C:773:LEU:H	1.65	0.61
3:D:550:VAL:HG22	3:D:552:ILE:H	1.63	0.61
3:D:1247:LYS:HE3	3:D:1247:LYS:HA	1.82	0.61
3:D:1075:ARG:H	3:D:1075:ARG:HD2	1.65	0.61
1:A:221:ALA:HB1	1:B:228:LEU:HD22	1.82	0.61
2:C:719:LYS:H	2:C:719:LYS:HD2	1.65	0.61
2:C:831:ILE:HG22	2:C:833:ILE:HG13	1.82	0.61
3:D:1140:ARG:HH12	3:D:1214:PRO:HG3	1.65	0.61
5:F:373:ARG:HG2	5:F:377:LYS:HE3	1.83	0.61
8:J:75:DG:H2'	8:J:76:DT:H5'	1.82	0.61
3:D:290:ILE:HD13	3:D:290:ILE:H	1.66	0.60
5:F:138:PRO:HD2	5:F:353:LEU:HD11	1.82	0.60
5:F:174:LEU:HD13	5:F:175:ALA:N	2.15	0.60
6:G:164:GLN:HG3	6:G:202:THR:HG23	1.83	0.60
7:I:50:DT:H1'	7:I:51:DT:H5'	1.82	0.60
2:C:1327:LEU:HD22	2:C:1337:ILE:HD12	1.84	0.60
2:C:848:GLU:HG3	2:C:886:LYS:HZ1	1.67	0.60
3:D:411:ILE:HD13	3:D:411:ILE:O	2.02	0.60
8:J:86:DC:H2'	8:J:87:DA:H8	1.66	0.60
1:A:251:PRO:HG2	3:D:391:ALA:HA	1.84	0.60
3:D:551:ARG:HE	3:D:551:ARG:N	1.99	0.60
3:D:15:GLU:HG2	3:D:16:GLU:HG3	1.82	0.60
3:D:81:ARG:H	3:D:81:ARG:HD3	1.65	0.60
3:D:124:ILE:HD13	3:D:124:ILE:H	1.67	0.60
5:F:449:THR:HG23	5:F:450:ILE:HG13	1.82	0.60
1:A:95:LYS:HA	1:A:95:LYS:HE2	1.82	0.59
2:C:895:LEU:HD22	2:C:900:LYS:HD3	1.84	0.59

Continued on next page...

Continued from previous page...

Atom-1	Atom-2	Interatomic distance (Å)	Clash overlap (Å)
3:D:865:HIS:HB3	3:D:868:TRP:HD1	1.67	0.59
2:C:579:ALA:HB1	2:C:587:LEU:HD11	1.84	0.59
2:C:26:TYR:HB2	2:C:29:SER:HB2	1.84	0.59
3:D:98:ARG:HD2	3:D:247:PRO:HG2	1.84	0.59
3:D:1067:ARG:HH22	3:D:1076:PRO:HG3	1.67	0.59
1:B:29:GLU:HB3	1:B:30:PRO:HD3	1.83	0.59
3:D:1039:ASP:HB2	3:D:1074:LEU:HD23	1.84	0.59
3:D:1307:LEU:HD23	3:D:1307:LEU:H	1.67	0.59
2:C:180:ARG:HG3	7:I:79:DT:N3	2.16	0.59
2:C:518:ASN:HD21	2:C:761:GLN:HB2	1.68	0.59
2:C:1102:GLY:HA3	3:D:716:GLN:HB3	1.84	0.59
1:A:190:ALA:H	1:A:199:ASP:HA	1.67	0.59
3:D:1005:LYS:HB3	3:D:1009:GLU:HG3	1.84	0.59
3:D:1192:LYS:N	3:D:1192:LYS:HE2	2.18	0.59
2:C:807:TRP:C	2:C:808:ASN:HD22	2.06	0.59
1:B:212:ASP:HB2	1:B:215:GLU:HG2	1.84	0.59
8:J:62:DT:H1'	8:J:63:DT:H5'	1.85	0.59
2:C:600:THR:HG22	2:C:602:GLU:H	1.68	0.58
1:B:82:LEU:HD11	1:B:171:LEU:HB3	1.84	0.58
2:C:228:VAL:HG22	2:C:321:LEU:H	1.66	0.58
2:C:833:ILE:HA	2:C:1055:ALA:HA	1.85	0.58
2:C:1308:ILE:HD13	2:C:1308:ILE:H	1.67	0.58
3:D:1167:LYS:H	3:D:1167:LYS:HD2	1.68	0.58
8:J:84:DA:H2''	8:J:85:DT:H5'	1.84	0.58
2:C:143:ARG:HD2	2:C:512:SER:HB2	1.85	0.58
4:E:4:VAL:HG12	4:E:5:THR:HG22	1.86	0.58
5:F:290:LEU:HB3	5:F:333:VAL:HG21	1.85	0.58
3:D:1370:MET:HE1	4:E:71:GLU:HB3	1.85	0.58
3:D:1372:ARG:HD2	4:E:29:GLN:HE22	1.66	0.58
8:J:89:DA:H5'	8:J:89:DA:H8	1.68	0.58
2:C:644:LEU:HD22	2:C:645:PHE:H	1.69	0.58
2:C:619:ALA:HB2	2:C:654:ASP:HB2	1.85	0.58
5:F:503:GLU:N	5:F:504:PRO:HA	2.19	0.58
2:C:65:ASN:HB3	2:C:105:TYR:HA	1.86	0.58
3:D:388:ARG:HH22	4:E:51:LEU:HD21	1.67	0.58
3:D:555:TYR:HD1	3:D:574:VAL:HG21	1.69	0.58
3:D:1322:ALA:HB3	3:D:1331:VAL:HG11	1.86	0.58
3:D:1335:ALA:HA	3:D:1340:LYS:HD3	1.86	0.58
5:F:320:ILE:HA	5:F:327:SER:HB2	1.86	0.58
3:D:287:ALA:HB1	3:D:291:ILE:HD11	1.86	0.58
3:D:1373:ARG:HH11	4:E:70:GLN:HG2	1.68	0.58

Continued on next page...

Continued from previous page...

Atom-1	Atom-2	Interatomic distance (Å)	Clash overlap (Å)
1:A:228:LEU:O	1:A:228:LEU:HD23	2.04	0.57
2:C:593:LYS:H	2:C:593:LYS:HD2	1.69	0.57
3:D:915:ILE:HD13	3:D:915:ILE:H	1.69	0.57
2:C:221:LEU:HD13	2:C:221:LEU:H	1.68	0.57
6:H:30:ILE:HB	6:H:86:VAL:HB	1.86	0.57
1:B:51:MET:HB3	1:B:179:PRO:HD2	1.85	0.57
5:F:503:GLU:H	5:F:504:PRO:HA	1.69	0.57
6:G:43:VAL:HG12	6:G:44:LYS:HG3	1.87	0.57
2:C:333:ILE:HD13	2:C:334:GLU:N	2.20	0.57
2:C:1307:ASN:HD22	2:C:1314:GLN:HA	1.69	0.57
2:C:843:THR:HG23	2:C:846:GLY:H	1.69	0.57
1:B:211:ILE:HD13	1:B:216:ALA:HB2	1.85	0.57
2:C:114:VAL:HG22	2:C:115:LYS:HD3	1.85	0.57
2:C:1204:LEU:HB3	2:C:1205:PRO:HD3	1.85	0.57
3:D:783:LEU:HD13	3:D:783:LEU:H	1.69	0.57
4:E:59:ILE:HG12	4:E:60:ASN:N	2.15	0.57
5:F:354:THR:HG22	5:F:356:GLU:H	1.69	0.57
6:H:75:LEU:HD13	6:H:99:TYR:HD2	1.69	0.57
8:J:50:DG:H2'	8:J:51:DT:C6	2.40	0.57
6:H:169:ARG:HH21	7:I:10:DT:H5''	1.68	0.57
8:J:10:DC:H2'	8:J:11:DG:C8	2.40	0.57
7:I:69:DT:H2'	7:I:70:DA:C8	2.39	0.57
1:A:192:VAL:HG21	1:A:198:LEU:HD12	1.87	0.57
2:C:137:VAL:HA	2:C:142:GLU:HA	1.87	0.57
2:C:518:ASN:HA	2:C:763:THR:HG21	1.87	0.57
3:D:108:ALA:H	3:D:276:ASN:HD21	1.53	0.57
3:D:113:HIS:HD2	3:D:115:TRP:H	1.51	0.57
3:D:583:VAL:N	3:D:584:PRO:HD2	2.20	0.57
3:D:835:LEU:HG	3:D:837:ASP:H	1.69	0.57
3:D:1249:ASN:HD22	3:D:1250:ASP:N	2.03	0.57
6:G:47:VAL:HG23	6:G:88:ALA:HA	1.86	0.57
2:C:10:ARG:HE	2:C:1180:MET:HA	1.69	0.57
2:C:224:PHE:HD2	2:C:322:LEU:HD21	1.68	0.57
3:D:1262:ARG:HG3	3:D:1263:LYS:HG3	1.87	0.57
3:D:77:ARG:HE	3:D:79:LYS:HE2	1.70	0.56
3:D:327:LEU:O	3:D:331:ILE:HG12	2.05	0.56
2:C:808:ASN:HD22	2:C:808:ASN:N	2.02	0.56
3:D:885:VAL:HG13	3:D:894:VAL:HG21	1.85	0.56
1:A:234:LEU:HD13	1:A:235:ARG:N	2.20	0.56
1:A:250:ASP:HB3	1:A:253:LEU:HD13	1.86	0.56
2:C:200:ARG:HE	2:C:200:ARG:HA	1.71	0.56

Continued on next page...

Continued from previous page...

Atom-1	Atom-2	Interatomic distance (Å)	Clash overlap (Å)
2:C:834:GLN:HB2	2:C:1054:LEU:HB3	1.87	0.56
3:D:803:VAL:HG21	3:D:1309:ILE:HG22	1.86	0.56
3:D:1371:ARG:HG2	4:E:22:VAL:HG13	1.86	0.56
8:J:18:DA:H2''	8:J:19:DT:H5'	1.88	0.56
1:B:112:ALA:HB3	1:B:126:PRO:HA	1.88	0.56
2:C:161:LYS:H	2:C:161:LYS:HD3	1.69	0.56
3:D:1350:ASN:HD22	3:D:1358:PRO:HD3	1.70	0.56
3:D:114:ILE:HD12	3:D:304:ASP:HB2	1.87	0.56
2:C:176:ILE:HD13	2:C:176:ILE:H	1.71	0.56
1:A:66:HIS:CD2	1:A:67:GLU:HG3	2.40	0.56
1:A:180:VAL:HG22	1:A:182:ARG:H	1.71	0.56
1:A:251:PRO:HA	1:A:254:LEU:HD13	1.88	0.56
2:C:46:GLN:HB3	2:C:50:GLU:HG2	1.86	0.56
3:D:798:ARG:HE	3:D:798:ARG:HA	1.71	0.56
3:D:1175:LEU:HB3	3:D:1178:THR:HB	1.86	0.56
3:D:288:PRO:HD2	3:D:291:ILE:HD11	1.87	0.56
3:D:1221:LEU:HD21	3:D:1305:ASP:HA	1.86	0.56
5:F:291:CYS:HB2	5:F:297:MET:HE3	1.88	0.56
2:C:1101:LEU:HA	3:D:719:PHE:HA	1.86	0.56
3:D:518:VAL:HA	3:D:536:LEU:HB3	1.88	0.56
3:D:810:THR:HG23	3:D:811:GLU:HG2	1.86	0.56
3:D:1344:LEU:HD12	3:D:1355:ARG:HH11	1.71	0.55
5:F:186:SER:O	5:F:190:LEU:HD13	2.05	0.55
1:B:17:GLU:HB3	1:B:25:LYS:HB2	1.87	0.55
3:D:141:PHE:HA	3:D:297:ARG:HD3	1.88	0.55
3:D:388:ARG:HD2	3:D:411:ILE:HG13	1.89	0.55
3:D:1355:ARG:HG2	3:D:1356:LEU:H	1.72	0.55
6:G:30:ILE:HG21	9:G:679:CMP:H5'2	1.88	0.55
2:C:550:VAL:HG11	2:C:560:PRO:HB3	1.87	0.55
2:C:755:LYS:CD	2:C:756:TYR:H	2.18	0.55
3:D:839:VAL:HA	3:D:842:ARG:HD2	1.89	0.55
3:D:1249:ASN:HD22	3:D:1250:ASP:H	1.52	0.55
3:D:1381:ALA:H	3:D:1382:PRO:CD	2.20	0.55
1:A:253:LEU:HA	1:A:278:ILE:HD11	1.89	0.55
2:C:668:ILE:HD12	2:C:668:ILE:O	2.07	0.55
2:C:1293:VAL:HG13	2:C:1301:ARG:HA	1.88	0.55
8:J:83:DG:H2'	8:J:84:DA:C8	2.41	0.55
1:A:159:ILE:HD13	1:A:172:LEU:HD12	1.88	0.55
5:F:137:TYR:CE2	5:F:139:GLU:HB2	2.41	0.55
2:C:110:PRO:HB3	2:C:118:LYS:HD2	1.88	0.55
3:D:450:HIS:CD2	3:D:452:LEU:HB2	2.42	0.55

Continued on next page...

Continued from previous page...

Atom-1	Atom-2	Interatomic distance (Å)	Clash overlap (Å)
2:C:40:GLU:HG3	2:C:44:GLU:HB2	1.89	0.55
5:F:551:LEU:HD13	5:F:552:THR:N	2.22	0.55
1:A:64:VAL:HG21	1:A:78:ILE:HD13	1.89	0.55
2:C:687:ARG:HD3	2:C:688:GLN:HG3	1.89	0.55
2:C:1314:GLN:HE21	3:D:473:THR:HA	1.70	0.55
3:D:1025:MET:HB2	3:D:1126:GLN:HE21	1.72	0.55
3:D:1158:GLU:HG3	3:D:1159:ILE:HG12	1.89	0.55
2:C:1068:GLY:H	2:C:1072:ASN:ND2	2.03	0.54
8:J:14:DC:H2'	8:J:15:DA:C8	2.42	0.54
2:C:1112:ILE:HG12	3:D:712:GLN:HE21	1.72	0.54
3:D:1206:ARG:HB3	3:D:1223:LEU:HG	1.89	0.54
1:A:251:PRO:HB2	3:D:392:THR:HG22	1.88	0.54
3:D:27:PRO:HD2	3:D:236:TRP:CZ3	2.42	0.54
3:D:1207:GLY:HA3	3:D:1224:ARG:HD3	1.89	0.54
5:F:187:GLN:HE22	5:F:267:ASP:HB3	1.72	0.54
1:A:78:ILE:HD12	1:A:81:ILE:HD11	1.90	0.54
2:C:152:SER:HB3	2:C:452:ARG:HG3	1.89	0.54
6:G:50:LEU:HB3	6:G:60:ILE:HA	1.90	0.54
2:C:12:ARG:HH21	2:C:1183:ALA:HB2	1.72	0.54
2:C:202:ARG:HH11	2:C:202:ARG:HA	1.72	0.54
3:D:271:ARG:O	3:D:275:ARG:HG2	2.07	0.54
3:D:1126:GLN:H	3:D:1126:GLN:NE2	2.05	0.54
3:D:1295:ASN:HD21	3:D:1297:LYS:HE2	1.72	0.54
6:H:133:ASN:HA	6:H:137:LEU:HD13	1.90	0.54
7:I:84:DT:H2'	7:I:85:DG:C8	2.43	0.54
1:A:260:LEU:HB2	1:A:262:LEU:HD21	1.90	0.54
2:C:194:LEU:HD22	2:C:196:VAL:HG23	1.90	0.54
2:C:758:ARG:NH1	2:C:835:GLU:HB2	2.23	0.54
3:D:452:LEU:HD11	3:D:506:VAL:HG21	1.90	0.54
5:F:405:ILE:HD13	5:F:405:ILE:H	1.73	0.54
1:B:100:LEU:HD21	1:B:121:VAL:HG11	1.90	0.53
3:D:290:ILE:HG12	3:D:291:ILE:HG23	1.89	0.53
3:D:953:LYS:HB2	3:D:953:LYS:NZ	2.23	0.53
5:F:548:LEU:HD22	5:F:560:ARG:HD3	1.90	0.53
3:D:1282:TYR:HB3	3:D:1286:LYS:HD3	1.89	0.53
5:F:508:GLU:CD	5:F:508:GLU:H	2.11	0.53
7:I:95:DC:H2'	7:I:96:DA:C8	2.43	0.53
8:J:3:DT:H2'	8:J:4:DG:C8	2.44	0.53
2:C:644:LEU:HD13	2:C:645:PHE:N	2.23	0.53
2:C:1269:ARG:HE	3:D:344:GLY:HA3	1.73	0.53
3:D:572:THR:HB	3:D:576:ARG:HB2	1.91	0.53

Continued on next page...

Continued from previous page...

Atom-1	Atom-2	Interatomic distance (Å)	Clash overlap (Å)
3:D:1355:ARG:HG2	3:D:1356:LEU:N	2.23	0.53
2:C:691:PRO:HA	2:C:788:SER:HB2	1.90	0.53
1:B:61:ILE:HA	1:B:142:MET:HB3	1.90	0.53
2:C:519:ASN:ND2	2:C:520:PRO:HD2	2.23	0.53
5:F:177:THR:HG23	5:F:260:ARG:HD2	1.91	0.53
1:A:145:LYS:HG3	1:A:147:GLN:HE22	1.74	0.53
2:C:599:VAL:HG11	2:C:623:LEU:HD21	1.90	0.53
3:D:421:VAL:HG12	3:D:470:VAL:HG12	1.91	0.53
6:G:32:GLN:HA	6:G:82:ARG:HB2	1.91	0.53
6:H:18:CYS:HB3	6:H:95:ALA:HB1	1.91	0.53
1:B:195:ARG:HH21	1:B:198:LEU:HD23	1.73	0.53
3:D:1047:THR:HG22	3:D:1062:LEU:HD21	1.90	0.53
3:D:615:LYS:HB3	3:D:616:PRO:HD3	1.90	0.53
5:F:588:ARG:HH11	5:F:589:GLN:HA	1.73	0.53
1:A:35:PHE:HA	1:A:38:THR:HG22	1.91	0.53
3:D:1038:THR:O	3:D:1040:MET:HG3	2.08	0.53
4:E:39:VAL:N	4:E:40:PRO:CD	2.71	0.53
1:B:101:THR:HG22	1:B:143:ARG:HD2	1.90	0.53
2:C:413:GLU:O	2:C:414:ILE:HG22	2.07	0.53
4:E:59:ILE:HG23	4:E:60:ASN:N	2.24	0.53
6:H:112:ILE:HD13	6:H:112:ILE:O	2.09	0.53
2:C:453:ILE:HD11	2:C:581:THR:HG21	1.91	0.52
2:C:496:LYS:N	2:C:497:PRO:HD2	2.24	0.52
7:I:10:DT:H2'	7:I:11:DG:C8	2.44	0.52
2:C:590:PRO:HG3	2:C:605:TYR:CE2	2.45	0.52
3:D:649:LYS:N	3:D:649:LYS:HE2	2.23	0.52
5:F:132:CYS:HA	5:F:257:LYS:HE2	1.91	0.52
6:G:57:LYS:HD2	6:H:136:PHE:HE2	1.74	0.52
2:C:88:ARG:HH12	2:C:941:LYS:HA	1.74	0.52
7:I:54:DT:H2''	7:I:55:DG:H5'	1.91	0.52
8:J:42:DA:OP2	8:J:42:DA:H3'	2.10	0.52
2:C:817:LEU:H	2:C:817:LEU:CD1	2.23	0.52
5:F:582:VAL:HG11	5:F:586:ARG:HD3	1.91	0.52
2:C:716:ALA:HB3	2:C:783:LEU:HB2	1.90	0.52
7:I:53:DA:H1'	7:I:54:DT:H5'	1.92	0.52
8:J:49:DA:H2''	8:J:50:DG:C8	2.45	0.52
1:A:13:LEU:HD11	1:A:16:ILE:HG23	1.91	0.52
2:C:488:MET:HB3	2:C:489:PRO:HD3	1.92	0.52
2:C:865:LEU:HD13	2:C:871:VAL:HB	1.91	0.52
2:C:1107:MET:SD	3:D:739:GLN:HG3	2.50	0.52
2:C:1276:TRP:CD1	3:D:801:VAL:HG11	2.44	0.52

Continued on next page...

Continued from previous page...

Atom-1	Atom-2	Interatomic distance (Å)	Clash overlap (Å)
3:D:335:GLN:H	3:D:335:GLN:NE2	2.08	0.52
6:G:40:TYR:HB2	6:G:70:ILE:HB	1.90	0.52
8:J:92:DT:H2'	8:J:93:DA:C8	2.45	0.52
1:A:166:ARG:NE	1:A:166:ARG:H	2.07	0.52
6:G:13:TRP:HD1	6:G:109:ASN:HD22	1.56	0.52
2:C:729:ALA:HA	2:C:769:PRO:HG2	1.90	0.52
2:C:1099:ASN:HB3	3:D:715:LYS:HG2	1.91	0.52
2:C:1293:VAL:HG11	2:C:1304:MET:HE3	1.91	0.52
8:J:65:DT:H2'	8:J:66:DG:C8	2.45	0.52
2:C:705:GLU:HG2	2:C:794:LEU:HB2	1.91	0.52
3:D:393:THR:HG22	3:D:395:LYS:H	1.74	0.52
3:D:983:LYS:H	3:D:983:LYS:HD3	1.75	0.51
5:F:231:THR:HA	5:F:234:THR:HG22	1.92	0.51
2:C:811:ASN:H	2:C:811:ASN:ND2	2.08	0.51
2:C:1105:SER:HB3	3:D:716:GLN:OE1	2.11	0.51
3:D:30:ILE:HD13	3:D:30:ILE:O	2.08	0.51
3:D:543:SER:HA	3:D:561:GLY:HA2	1.90	0.51
3:D:1226:VAL:HG23	3:D:1304:ARG:HG2	1.90	0.51
8:J:67:DC:H2''	8:J:68:DC:H5'	1.91	0.51
1:B:133:LEU:HD12	1:B:138:ALA:HB1	1.92	0.51
2:C:811:ASN:H	2:C:811:ASN:HD22	1.57	0.51
3:D:822:MET:HB2	3:D:887:SER:HG	1.75	0.51
3:D:1106:ILE:HD11	3:D:1123:ARG:HD2	1.93	0.51
5:F:511:ILE:HD11	5:F:519:LEU:HA	1.92	0.51
8:J:84:DA:C2'	8:J:85:DT:H5'	2.40	0.51
3:D:126:LEU:HG	3:D:216:LYS:HE3	1.91	0.51
6:G:77:GLU:HB3	6:G:80:GLN:NE2	2.25	0.51
2:C:1103:VAL:HG11	3:D:712:GLN:N	2.25	0.51
3:D:714:GLU:HG2	3:D:715:LYS:H	1.75	0.51
3:D:1258:ARG:HD2	3:D:1258:ARG:O	2.11	0.51
2:C:1111:GLN:HG3	3:D:712:GLN:HE22	1.75	0.51
3:D:856:ILE:O	3:D:856:ILE:HD13	2.10	0.51
1:A:58:GLU:HA	1:A:172:LEU:HD22	1.92	0.51
3:D:362:ARG:H	3:D:365:GLN:HB2	1.76	0.51
8:J:39:DG:H2'	8:J:40:DG:C8	2.46	0.51
8:J:44:DC:H2'	8:J:45:DA:C8	2.46	0.51
8:J:86:DC:H2'	8:J:87:DA:C8	2.46	0.51
3:D:1155:ILE:HB	3:D:1176:VAL:HG11	1.93	0.51
3:D:1156:LEU:HD23	3:D:1157:ALA:N	2.26	0.51
3:D:1224:ARG:HB3	3:D:1228:ALA:HB3	1.93	0.51
5:F:503:GLU:HB2	5:F:504:PRO:O	2.11	0.51

Continued on next page...

Continued from previous page...

Atom-1	Atom-2	Interatomic distance (Å)	Clash overlap (Å)
6:G:112:ILE:O	6:G:112:ILE:HD13	2.11	0.51
3:D:610:ARG:HE	3:D:865:HIS:CE1	2.29	0.50
8:J:89:DA:H5'	8:J:89:DA:C8	2.45	0.50
2:C:901:LEU:HD11	5:F:598:LEU:HB3	1.93	0.50
3:D:104:HIS:HB2	3:D:241:VAL:HB	1.91	0.50
3:D:242:LEU:HD12	3:D:243:PRO:HD2	1.93	0.50
3:D:289:ASP:HA	3:D:292:VAL:HG12	1.93	0.50
3:D:442:ILE:HD13	3:D:443:GLU:N	2.25	0.50
4:E:21:LEU:HA	4:E:24:ALA:HB3	1.93	0.50
4:E:59:ILE:CG1	4:E:60:ASN:H	2.19	0.50
5:F:408:GLY:HA2	5:F:435:ILE:HG23	1.93	0.50
6:G:50:LEU:HD23	6:G:60:ILE:HG12	1.93	0.50
3:D:834:PRO:HA	3:D:838:ARG:HH12	1.76	0.50
3:D:805:GLN:HB2	3:D:1347:LEU:HB3	1.92	0.50
5:F:397:ARG:NH2	8:J:30:DT:H2'	2.27	0.50
7:I:11:DG:H2'	7:I:12:DT:C6	2.46	0.50
1:A:207:THR:HG22	1:A:209:GLY:H	1.77	0.50
3:D:161:THR:HG22	3:D:163:GLU:H	1.76	0.50
1:A:99:ILE:HG13	1:A:145:LYS:HE2	1.93	0.50
1:A:253:LEU:HD11	1:A:312:LEU:HD11	1.92	0.50
3:D:35:PHE:HB2	3:D:61:ILE:HG23	1.92	0.50
3:D:60:ARG:HA	3:D:90:VAL:HG22	1.93	0.50
6:H:49:VAL:HG22	6:H:86:VAL:HG22	1.94	0.50
2:C:577:VAL:HG11	2:C:658:GLN:HG2	1.93	0.50
2:C:1211:ARG:HE	2:C:1220:GLN:HB3	1.76	0.50
2:C:1281:TYR:CE2	3:D:431:ARG:HB3	2.47	0.50
5:F:185:LEU:H	5:F:185:LEU:HD12	1.76	0.50
1:B:32:GLU:HB2	1:B:35:PHE:HD2	1.77	0.50
2:C:384:LEU:HD23	2:C:384:LEU:H	1.76	0.50
3:D:485:MET:HG2	3:D:487:THR:HG22	1.94	0.50
3:D:1138:LEU:HB2	3:D:1139:PRO:HD3	1.94	0.50
6:G:75:LEU:HD13	6:G:99:TYR:HD2	1.77	0.50
2:C:71:VAL:HB	2:C:99:LYS:HB2	1.93	0.49
2:C:444:ASP:HB3	2:C:447:HIS:HB2	1.94	0.49
1:A:47:LEU:HD21	1:A:220:ALA:HB2	1.93	0.49
2:C:211:ARG:HH12	2:C:216:THR:HG22	1.78	0.49
2:C:395:TYR:CD2	2:C:399:ALA:HB3	2.47	0.49
3:D:925:GLU:N	3:D:926:PRO:CD	2.74	0.49
5:F:286:LEU:HA	5:F:289:LYS:HE3	1.95	0.49
5:F:582:VAL:HG21	5:F:586:ARG:HD3	1.94	0.49
8:J:52:DG:H8	8:J:52:DG:OP2	1.96	0.49

Continued on next page...

Continued from previous page...

Atom-1	Atom-2	Interatomic distance (Å)	Clash overlap (Å)
2:C:667:LEU:HD23	2:C:705:GLU:HG3	1.94	0.49
2:C:759:SER:HB3	2:C:763:THR:H	1.78	0.49
3:D:368:LEU:HD21	3:D:439:PRO:HB3	1.93	0.49
2:C:42:ASP:HB3	2:C:43:PRO:HD3	1.95	0.49
2:C:1113:LEU:HD22	2:C:1195:ILE:HD12	1.93	0.49
3:D:135:ILE:HD13	3:D:135:ILE:O	2.12	0.49
3:D:579:LEU:HD21	3:D:620:PHE:HZ	1.77	0.49
6:G:69:PHE:H	6:G:123:ARG:HH22	1.61	0.49
7:I:56:DC:OP2	7:I:56:DC:H6	1.96	0.49
1:B:192:VAL:HG22	1:B:193:GLU:H	1.78	0.49
2:C:202:ARG:HH22	2:C:369:MET:HG3	1.77	0.49
3:D:120:LEU:HG	3:D:121:PRO:HA	1.94	0.49
2:C:169:LYS:HA	2:C:432:LEU:HA	1.95	0.49
2:C:211:ARG:HD3	2:C:347:ILE:HA	1.95	0.49
3:D:822:MET:O	3:D:824:PRO:HD3	2.12	0.49
6:G:131:VAL:HG22	6:H:131:VAL:HG22	1.94	0.49
6:H:130:LYS:HE3	6:H:134:LEU:HD21	1.94	0.49
2:C:178:PRO:HA	2:C:394:ARG:HD3	1.95	0.49
2:C:540:ARG:H	2:C:540:ARG:HD3	1.76	0.49
3:D:148:GLU:HB2	3:D:188:LEU:HD11	1.94	0.49
1:A:195:ARG:NH2	1:A:197:ASP:HB3	2.27	0.49
2:C:93:SER:HB2	2:C:126:GLU:HG2	1.95	0.49
2:C:157:PHE:HD2	2:C:169:LYS:HD2	1.77	0.49
3:D:112:ALA:HB2	3:D:185:ILE:HD13	1.94	0.49
3:D:826:ILE:HD13	3:D:877:VAL:HG13	1.95	0.49
4:E:72:GLN:CD	4:E:72:GLN:H	2.16	0.49
4:E:36:ASP:N	4:E:37:PRO:CD	2.76	0.48
2:C:431:LYS:O	2:C:435:ILE:HG22	2.14	0.48
2:C:542:ARG:HA	2:C:542:ARG:HH11	1.78	0.48
3:D:262:THR:HG21	5:F:449:THR:HG21	1.95	0.48
3:D:275:ARG:NH2	3:D:298:MET:HB3	2.28	0.48
3:D:1165:PHE:HA	3:D:1174:ARG:NH1	2.28	0.48
5:F:264:LYS:HE3	5:F:264:LYS:N	2.28	0.48
7:I:29:DT:H2'	7:I:30:DA:C8	2.47	0.48
7:I:77:DC:H2'	7:I:78:DC:C6	2.48	0.48
2:C:414:ILE:HG12	2:C:415:GLU:H	1.77	0.48
3:D:953:LYS:N	3:D:953:LYS:HD3	2.28	0.48
1:A:91:ARG:HB3	1:A:210:THR:HG23	1.94	0.48
2:C:423:ASP:HA	2:C:426:ILE:HG22	1.95	0.48
2:C:1306:LYS:HG2	5:F:535:ALA:HB2	1.96	0.48
3:D:118:LYS:HB2	3:D:311:ARG:HH21	1.78	0.48

Continued on next page...

Continued from previous page...

Atom-1	Atom-2	Interatomic distance (Å)	Clash overlap (Å)
6:G:18:CYS:HB3	6:G:95:ALA:HB1	1.94	0.48
6:H:43:VAL:HG12	6:H:44:LYS:HG3	1.95	0.48
1:A:240:PRO:HB3	1:B:30:PRO:HG3	1.96	0.48
2:C:1108:ASN:HD22	2:C:1108:ASN:N	2.07	0.48
3:D:265:LEU:HD11	3:D:327:LEU:HD23	1.94	0.48
3:D:836:ARG:HG3	3:D:869:CYS:SG	2.54	0.48
1:A:30:PRO:C	1:A:31:LEU:HD22	2.34	0.48
2:C:144:VAL:HG21	2:C:527:LYS:HG2	1.95	0.48
2:C:1103:VAL:HB	2:C:1104:PRO:HD3	1.96	0.48
3:D:885:VAL:HG11	3:D:1255:VAL:HG12	1.96	0.48
6:H:40:TYR:HB2	6:H:70:ILE:HB	1.95	0.48
2:C:698:PRO:HG3	2:C:1231:TYR:CE1	2.48	0.48
2:C:1086:PRO:HG3	2:C:1215:GLY:H	1.79	0.48
3:D:832:LYS:NZ	3:D:832:LYS:HB2	2.29	0.48
5:F:598:LEU:O	5:F:601:PRO:HD2	2.13	0.48
2:C:811:ASN:HD22	2:C:811:ASN:N	2.11	0.48
2:C:1186:VAL:HG22	2:C:1187:PHE:CD1	2.49	0.48
3:D:245:LEU:HD11	3:D:249:LEU:HD22	1.94	0.48
3:D:452:LEU:HD21	3:D:506:VAL:HG11	1.96	0.48
3:D:838:ARG:HG3	3:D:839:VAL:HG23	1.96	0.48
3:D:1174:ARG:HB3	3:D:1178:THR:HG22	1.94	0.48
1:A:81:ILE:HG13	1:A:82:LEU:HD22	1.95	0.48
2:C:395:TYR:HD2	2:C:399:ALA:HB3	1.79	0.48
2:C:1337:ILE:HD13	2:C:1338:GLU:N	2.29	0.48
3:D:337:ARG:HB2	8:J:17:DA:H8	1.79	0.48
3:D:1058:SER:HB3	3:D:1106:ILE:HB	1.96	0.48
3:D:1285:VAL:HG13	3:D:1286:LYS:HD2	1.96	0.48
3:D:27:PRO:HA	3:D:30:ILE:HG22	1.94	0.47
2:C:453:ILE:HG21	2:C:530:ILE:HD13	1.97	0.47
3:D:341:ASN:ND2	3:D:342:LEU:H	2.12	0.47
4:E:18:ASP:O	4:E:22:VAL:HG23	2.14	0.47
5:F:588:ARG:HG3	8:J:53:DT:H2'	1.96	0.47
6:H:90:THR:HG22	8:J:95:DT:H5'	1.96	0.47
2:C:500:ALA:HA	2:C:503:LYS:HE2	1.97	0.47
3:D:807:LEU:HB2	3:D:1259:GLN:HE21	1.80	0.47
1:A:58:GLU:HB3	1:A:145:LYS:HD2	1.96	0.47
1:A:78:ILE:O	1:A:82:LEU:HD23	2.14	0.47
2:C:10:ARG:NE	2:C:1181:PRO:HD3	2.29	0.47
2:C:157:PHE:HA	2:C:169:LYS:NZ	2.29	0.47
3:D:314:ARG:NH2	3:D:323:PRO:HB3	2.29	0.47
6:G:201:LYS:HE3	7:I:29:DT:H5''	1.95	0.47

Continued on next page...

Continued from previous page...

Atom-1	Atom-2	Interatomic distance (Å)	Clash overlap (Å)
1:A:2:GLN:HE22	1:A:4:SER:HB2	1.79	0.47
1:A:240:PRO:HB2	1:A:241:GLU:H	1.57	0.47
3:D:1044:GLN:NE2	3:D:1045:THR:HG23	2.29	0.47
3:D:1175:LEU:HD13	3:D:1188:GLU:HB2	1.96	0.47
1:B:195:ARG:NH2	1:B:198:LEU:HD23	2.30	0.47
2:C:1269:ARG:HB2	3:D:346:ARG:HG2	1.96	0.47
3:D:53:ARG:CZ	3:D:60:ARG:HH21	2.27	0.47
3:D:474:LEU:O	3:D:474:LEU:HD23	2.14	0.47
5:F:180:HIS:CD2	5:F:190:LEU:HG	2.49	0.47
6:H:15:LEU:HA	6:H:18:CYS:SG	2.54	0.47
8:J:48:DA:H2'	8:J:49:DA:C8	2.50	0.47
8:J:96:DG:H2''	8:J:97:DC:H5'	1.97	0.47
1:A:219:ARG:O	1:A:219:ARG:HD3	2.15	0.47
2:C:120:GLN:HG3	2:C:121:GLU:HG3	1.97	0.47
2:C:180:ARG:HG3	7:I:79:DT:C2	2.49	0.47
2:C:482:GLY:HA3	2:C:487:LEU:HD22	1.96	0.47
2:C:817:LEU:O	2:C:817:LEU:HD22	2.14	0.47
2:C:831:ILE:HD12	2:C:831:ILE:N	2.30	0.47
3:D:580:TRP:HD1	3:D:591:ILE:HD12	1.80	0.47
3:D:850:LYS:HB3	3:D:850:LYS:NZ	2.29	0.47
3:D:1324:SER:HB2	3:D:1348:LYS:NZ	2.30	0.47
8:J:56:DA:H4'	8:J:57:DG:OP1	2.15	0.47
2:C:157:PHE:HA	2:C:169:LYS:HZ2	1.80	0.47
2:C:1078:LYS:HD2	2:C:1079:ILE:N	2.30	0.47
2:C:1313:HIS:HE1	3:D:474:LEU:H	1.62	0.47
3:D:432:LEU:HD21	3:D:499:ILE:HG21	1.97	0.47
3:D:483:LEU:HD23	4:E:16:ARG:HH12	1.78	0.47
3:D:909:ILE:HG23	3:D:913:GLU:HG3	1.97	0.47
3:D:979:ASN:H	3:D:979:ASN:HD22	1.63	0.47
3:D:380:PHE:HZ	3:D:472:LEU:HG	1.80	0.47
3:D:983:LYS:HB2	3:D:991:THR:HG23	1.96	0.47
7:I:49:DC:H2'	7:I:50:DT:C6	2.50	0.47
2:C:886:LYS:HB3	2:C:886:LYS:NZ	2.30	0.47
3:D:605:LEU:HD23	3:D:605:LEU:O	2.15	0.47
3:D:1175:LEU:HD22	3:D:1186:TYR:HD2	1.80	0.47
5:F:551:LEU:HD12	5:F:556:ALA:HB2	1.95	0.47
7:I:65:DC:H2'	7:I:66:DG:C8	2.50	0.47
3:D:281:ARG:NH1	5:F:188:GLU:HG3	2.30	0.46
2:C:818:VAL:HG23	2:C:1076:ILE:HD13	1.97	0.46
3:D:1172:LYS:O	3:D:1172:LYS:HD3	2.16	0.46
2:C:218:GLU:HG3	2:C:222:ASP:OD2	2.15	0.46

Continued on next page...

Continued from previous page...

Atom-1	Atom-2	Interatomic distance (Å)	Clash overlap (Å)
2:C:1289:GLU:HB2	2:C:1294:LYS:HE2	1.96	0.46
3:D:865:HIS:HB3	3:D:868:TRP:CD1	2.49	0.46
5:F:276:MET:HA	5:F:279:ARG:HH21	1.81	0.46
6:G:106:ILE:HD13	6:G:113:LEU:HD22	1.96	0.46
3:D:265:LEU:HD23	3:D:265:LEU:O	2.16	0.46
3:D:431:ARG:NH1	3:D:431:ARG:HB2	2.30	0.46
3:D:719:PHE:CG	3:D:720:ASN:N	2.83	0.46
3:D:902:ASP:O	3:D:903:LEU:HB2	2.16	0.46
3:D:1381:ALA:N	3:D:1382:PRO:CD	2.78	0.46
5:F:234:THR:HG23	5:F:235:ILE:HD12	1.97	0.46
7:I:64:DT:H2'	7:I:65:DC:C6	2.49	0.46
3:D:560:ASN:HB2	3:D:573:THR:HA	1.96	0.46
3:D:1328:THR:O	3:D:1332:LEU:HD23	2.16	0.46
4:E:36:ASP:CG	4:E:37:PRO:HD3	2.35	0.46
6:H:139:VAL:HG22	6:H:142:ARG:HH21	1.80	0.46
7:I:37:DA:H1'	7:I:38:DA:H5''	1.98	0.46
1:B:33:ARG:HE	1:B:33:ARG:HA	1.81	0.46
2:C:361:SER:OG	2:C:364:VAL:HG23	2.16	0.46
3:D:293:ARG:HH21	3:D:296:LYS:HB2	1.81	0.46
3:D:579:LEU:HD21	3:D:620:PHE:CZ	2.50	0.46
5:F:591:GLU:O	5:F:595:LEU:HG	2.16	0.46
7:I:47:DC:H4'	7:I:48:DA:OP1	2.16	0.46
3:D:450:HIS:NE2	3:D:452:LEU:HB2	2.31	0.46
3:D:1381:ALA:H	3:D:1382:PRO:HD2	1.81	0.46
7:I:48:DA:H4'	7:I:49:DC:OP1	2.16	0.46
3:D:245:LEU:HD12	3:D:246:PRO:HD2	1.98	0.46
3:D:525:MET:HG2	3:D:527:LEU:HG	1.97	0.46
3:D:953:LYS:HB2	3:D:953:LYS:HZ2	1.80	0.46
5:F:359:LYS:HB2	5:F:359:LYS:NZ	2.31	0.46
7:I:1:DC:H2'	7:I:2:DG:C8	2.51	0.46
1:B:191:ARG:HD2	1:B:191:ARG:N	2.31	0.46
2:C:473:ARG:HD2	2:C:473:ARG:N	2.31	0.46
3:D:450:HIS:CG	3:D:451:PRO:HD2	2.51	0.46
3:D:516:ASP:HB3	3:D:536:LEU:HB2	1.98	0.46
3:D:739:GLN:C	3:D:740:LEU:HD22	2.36	0.46
3:D:222:LYS:HE2	3:D:1275:LEU:HD23	1.96	0.46
3:D:246:PRO:HA	3:D:247:PRO:HD3	1.86	0.46
3:D:339:ARG:HB3	8:J:17:DA:H5'	1.98	0.46
3:D:609:TYR:CE2	3:D:614:LEU:HG	2.51	0.46
3:D:1028:ILE:HG12	3:D:1120:THR:HG22	1.98	0.46
1:A:252:ILE:HG23	1:A:253:LEU:HD12	1.98	0.45

Continued on next page...

Continued from previous page...

Atom-1	Atom-2	Interatomic distance (Å)	Clash overlap (Å)
1:B:164:ASP:H	1:B:167:PRO:HG3	1.80	0.45
2:C:551:HIS:CG	2:C:552:PRO:HD2	2.51	0.45
3:D:81:ARG:HD3	3:D:81:ARG:N	2.30	0.45
3:D:371:LYS:HB2	3:D:371:LYS:NZ	2.31	0.45
3:D:483:LEU:HB3	4:E:16:ARG:NH1	2.31	0.45
3:D:1075:ARG:HD2	3:D:1075:ARG:N	2.30	0.45
5:F:426:LYS:HB2	5:F:426:LYS:NZ	2.31	0.45
5:F:457:ILE:HD12	5:F:460:ILE:HD12	1.97	0.45
5:F:582:VAL:HG12	7:I:42:DC:H3'	1.96	0.45
6:H:208:THR:HG22	6:H:209:ARG:HG3	1.99	0.45
2:C:1325:VAL:HG11	3:D:99:ARG:HH21	1.81	0.45
6:H:23:TYR:HA	6:H:24:PRO:HD2	1.83	0.45
3:D:514:THR:HG23	3:D:576:ARG:HD2	1.98	0.45
6:H:72:GLU:HB2	6:H:116:LEU:HD21	1.97	0.45
6:H:169:ARG:NH2	7:I:10:DT:H5''	2.32	0.45
3:D:65:VAL:HG22	3:D:98:ARG:HH22	1.81	0.45
3:D:637:ALA:HA	3:D:709:ARG:HD3	1.98	0.45
3:D:685:ILE:HD13	3:D:685:ILE:O	2.16	0.45
3:D:1144:LEU:HB3	3:D:1233:ILE:HG13	1.98	0.45
5:F:571:HIS:HB3	5:F:574:GLU:HB3	1.99	0.45
5:F:593:LYS:HD2	5:F:596:ARG:NH2	2.32	0.45
2:C:414:ILE:HG12	2:C:415:GLU:OE1	2.17	0.45
2:C:854:ILE:HA	2:C:855:PRO:HD3	1.82	0.45
3:D:277:ASN:HA	3:D:280:LYS:HD2	1.97	0.45
3:D:1357:ILE:HA	3:D:1358:PRO:HD3	1.77	0.45
5:F:300:LYS:NZ	5:F:300:LYS:HB3	2.31	0.45
5:F:306:PHE:O	5:F:310:GLU:HB3	2.16	0.45
7:I:75:DC:H2''	7:I:76:DA:C8	2.52	0.45
2:C:354:ASP:OD2	2:C:359:ARG:HA	2.17	0.45
2:C:811:ASN:HB2	2:C:1099:ASN:HD22	1.81	0.45
3:D:430:HIS:HD2	3:D:432:LEU:N	2.12	0.45
3:D:555:TYR:CD1	3:D:574:VAL:HG21	2.49	0.45
6:H:77:GLU:HB3	6:H:80:GLN:NE2	2.32	0.45
1:A:118:ASP:HB3	1:A:121:VAL:HB	1.98	0.45
1:B:61:ILE:HG12	1:B:142:MET:HB3	1.97	0.45
2:C:742:TYR:HD2	2:C:744:GLY:H	1.61	0.45
2:C:775:GLU:HA	2:C:776:PRO:HD2	1.83	0.45
3:D:551:ARG:HE	3:D:551:ARG:H	1.63	0.45
3:D:1037:PHE:HD2	3:D:1040:MET:HE3	1.81	0.45
4:E:46:THR:O	4:E:54:ILE:HD11	2.16	0.45
5:F:343:LYS:HB2	5:F:343:LYS:NZ	2.31	0.45

Continued on next page...

Continued from previous page...

Atom-1	Atom-2	Interatomic distance (Å)	Clash overlap (Å)
1:A:180:VAL:HG11	1:A:183:ILE:HD11	1.98	0.45
1:A:298:LYS:HA	1:A:301:THR:HG22	1.99	0.45
2:C:117:ILE:HG23	2:C:488:MET:HG2	1.98	0.45
2:C:488:MET:H	2:C:489:PRO:CD	2.29	0.45
2:C:1070:HIS:NE2	2:C:1111:GLN:HB3	2.32	0.45
5:F:566:ASP:CG	5:F:567:MET:H	2.20	0.45
7:I:45:DT:H2 ⁷	7:I:46:DA:C8	2.52	0.45
2:C:1103:VAL:H	2:C:1104:PRO:CD	2.29	0.45
3:D:21:LYS:NZ	3:D:21:LYS:HB3	2.32	0.45
3:D:340:GLN:HB3	8:J:18:DA:H5 ⁷	1.99	0.45
3:D:609:TYR:HE2	3:D:614:LEU:HG	1.82	0.45
3:D:930:LEU:HB3	3:D:931:THR:H	1.60	0.45
5:F:185:LEU:HD11	5:F:413:MET:HB3	1.99	0.45
5:F:402:LEU:O	5:F:402:LEU:HD13	2.16	0.45
1:A:226:GLU:HA	1:A:229:GLU:HG3	1.98	0.45
2:C:1307:ASN:ND2	2:C:1314:GLN:HA	2.30	0.45
3:D:579:LEU:O	3:D:582:ILE:HG12	2.17	0.45
4:E:36:ASP:OD1	4:E:37:PRO:HD3	2.16	0.45
5:F:418:LYS:NZ	5:F:418:LYS:HB3	2.31	0.45
5:F:551:LEU:HD22	5:F:552:THR:H	1.82	0.45
2:C:470:ARG:HH11	2:C:470:ARG:HA	1.81	0.44
2:C:1314:GLN:CD	2:C:1314:GLN:H	2.20	0.44
3:D:291:ILE:HD13	3:D:291:ILE:H	1.81	0.44
3:D:483:LEU:HD12	3:D:484:MET:N	2.32	0.44
3:D:911:LYS:HG2	3:D:1365:TYR:HD2	1.82	0.44
3:D:1101:LEU:HA	3:D:1102:PRO:HD2	1.86	0.44
3:D:1145:PHE:O	3:D:1309:ILE:HG12	2.17	0.44
4:E:56:GLU:OE1	4:E:58:LEU:HD22	2.17	0.44
2:C:1204:LEU:H	2:C:1205:PRO:CD	2.29	0.44
2:C:1259:LEU:HB3	2:C:1260:GLY:H	1.67	0.44
3:D:820:ILE:HG23	3:D:820:ILE:O	2.17	0.44
3:D:955:LYS:NZ	3:D:955:LYS:HB3	2.32	0.44
3:D:1224:ARG:HE	3:D:1228:ALA:HB1	1.82	0.44
3:D:1350:ASN:ND2	3:D:1358:PRO:HD3	2.32	0.44
3:D:1366:HIS:CD2	4:E:21:LEU:HD12	2.53	0.44
2:C:1099:ASN:OD1	2:C:1101:LEU:HB2	2.17	0.44
2:C:1292:THR:HG22	2:C:1320:PRO:HG3	1.99	0.44
3:D:979:ASN:HD22	3:D:979:ASN:N	2.15	0.44
7:I:41:DG:H8	7:I:41:DG:OP2	2.00	0.44
2:C:540:ARG:HD3	2:C:540:ARG:N	2.33	0.44
2:C:914:LYS:HB2	2:C:914:LYS:NZ	2.32	0.44

Continued on next page...

Continued from previous page...

Atom-1	Atom-2	Interatomic distance (Å)	Clash overlap (Å)
8:J:77:DG:H2'	8:J:78:DA:C8	2.52	0.44
1:B:82:LEU:HA	1:B:85:LEU:HD12	1.98	0.44
3:D:624:ILE:HD13	3:D:624:ILE:O	2.18	0.44
1:B:51:MET:HA	1:B:52:PRO:HD2	1.84	0.44
1:B:164:ASP:CG	1:B:165:GLU:H	2.21	0.44
2:C:599:VAL:HG13	2:C:626:GLU:HG3	1.99	0.44
3:D:108:ALA:HB2	3:D:280:LYS:HE2	2.00	0.44
3:D:135:ILE:O	3:D:139:LEU:HD12	2.16	0.44
5:F:185:LEU:HD12	5:F:185:LEU:N	2.32	0.44
5:F:216:LEU:HD21	5:F:220:LYS:HE3	1.99	0.44
5:F:454:VAL:HG11	7:I:64:DT:H72	1.99	0.44
6:G:169:ARG:HH21	8:J:74:DT:H5'	1.83	0.44
2:C:110:PRO:HB3	2:C:118:LYS:HB2	2.00	0.44
2:C:564:PRO:HG2	2:C:572:ILE:HB	2.00	0.44
3:D:644:MET:HG3	3:D:764:ARG:NH1	2.32	0.44
3:D:702:GLN:HA	3:D:706:VAL:HG22	1.99	0.44
3:D:910:ASN:ND2	3:D:911:LYS:H	2.15	0.44
3:D:1075:ARG:N	3:D:1075:ARG:HH11	2.16	0.44
2:C:57:PHE:HA	2:C:59:ILE:N	2.32	0.44
2:C:471:VAL:HG21	2:C:493:ILE:HG12	1.99	0.44
2:C:831:ILE:HD12	2:C:831:ILE:H	1.83	0.44
2:C:1089:GLU:HG3	2:C:1213:TYR:HE2	1.83	0.44
3:D:317:THR:HB	3:D:324:LEU:HD13	2.00	0.44
3:D:609:TYR:HD2	3:D:617:THR:HG21	1.83	0.44
3:D:1079:LYS:NZ	3:D:1079:LYS:HB3	2.32	0.44
4:E:6:VAL:HG13	4:E:7:GLN:CD	2.38	0.44
1:A:243:LYS:HB3	1:A:245:GLU:OE2	2.18	0.44
2:C:11:ILE:HD13	2:C:12:ARG:N	2.32	0.44
2:C:844:LYS:O	2:C:844:LYS:HD3	2.18	0.44
3:D:566:LYS:NZ	3:D:584:PRO:HB3	2.33	0.44
3:D:690:ASN:HB2	3:D:738:ARG:HD3	1.98	0.44
3:D:1279:GLN:HB3	3:D:1282:TYR:HE1	1.82	0.44
8:J:37:DC:H2'	8:J:38:DC:C6	2.52	0.44
2:C:448:LEU:HD21	2:C:554:HIS:NE2	2.32	0.43
3:D:94:GLN:H	3:D:94:GLN:NE2	2.16	0.43
3:D:298:MET:HE2	5:F:402:LEU:HG	2.00	0.43
2:C:169:LYS:HZ3	2:C:175:ARG:H	1.65	0.43
2:C:587:LEU:HD23	2:C:588:GLU:N	2.33	0.43
2:C:1182:ILE:HG22	2:C:1184:THR:HG23	1.98	0.43
3:D:661:VAL:O	3:D:664:ILE:HG22	2.18	0.43
3:D:1041:ILE:N	3:D:1041:ILE:HD12	2.32	0.43

Continued on next page...

Continued from previous page...

Atom-1	Atom-2	Interatomic distance (Å)	Clash overlap (Å)
7:I:34:DA:H2'	7:I:35:DA:H8	1.82	0.43
1:A:224:LEU:HD12	1:B:228:LEU:HD11	2.00	0.43
1:B:13:LEU:HD11	1:B:16:ILE:HD11	2.01	0.43
2:C:865:LEU:H	2:C:865:LEU:HD22	1.82	0.43
2:C:1278:LEU:HD11	2:C:1286:THR:HG23	2.00	0.43
3:D:381:ILE:O	3:D:385:LEU:HG	2.19	0.43
5:F:361:ILE:O	5:F:365:MET:HG3	2.18	0.43
7:I:54:DT:H2'	7:I:55:DG:C8	2.53	0.43
2:C:645:PHE:O	2:C:646:SER:HB2	2.19	0.43
2:C:892:GLU:O	2:C:894:GLN:HG3	2.18	0.43
2:C:1270:PHE:HB2	3:D:347:VAL:HG23	2.00	0.43
2:C:1294:LYS:HZ1	3:D:472:LEU:HD13	1.83	0.43
3:D:131:PRO:HD2	3:D:135:ILE:HG21	2.00	0.43
3:D:615:LYS:O	3:D:619:ILE:HG12	2.18	0.43
3:D:842:ARG:HD3	3:D:882:VAL:HG21	2.01	0.43
1:B:23:HIS:HE1	1:B:25:LYS:NZ	2.17	0.43
1:B:28:LEU:HB3	1:B:201:LEU:HB3	2.00	0.43
1:B:219:ARG:O	1:B:223:ILE:HG13	2.19	0.43
2:C:864:LYS:HD2	2:C:864:LYS:N	2.32	0.43
2:C:1073:LYS:NZ	2:C:1073:LYS:HB3	2.33	0.43
3:D:103:GLY:O	3:D:243:PRO:HA	2.18	0.43
3:D:291:ILE:HD13	3:D:291:ILE:N	2.33	0.43
3:D:721:SER:OG	3:D:724:MET:HB3	2.19	0.43
3:D:739:GLN:OE1	3:D:744:ARG:HD2	2.17	0.43
3:D:1372:ARG:HG2	3:D:1374:ALA:H	1.83	0.43
5:F:407:GLU:HB2	5:F:439:ILE:HG22	2.01	0.43
1:A:71:LYS:HZ3	1:A:140:ILE:HA	1.84	0.43
1:B:152:TYR:HE1	1:B:176:CYS:HG	1.65	0.43
2:C:39:ILE:N	2:C:39:ILE:HD12	2.33	0.43
2:C:49:LEU:HG	2:C:53:PHE:HE2	1.83	0.43
2:C:200:ARG:HA	2:C:200:ARG:NE	2.33	0.43
3:D:579:LEU:O	3:D:579:LEU:HD23	2.18	0.43
3:D:1194:ARG:HH21	3:D:1210:ILE:HG22	1.83	0.43
6:G:77:GLU:HB3	6:G:80:GLN:HE21	1.83	0.43
1:A:66:HIS:CG	1:A:67:GLU:H	2.37	0.43
2:C:189:ASP:HA	2:C:190:PRO:HD2	1.83	0.43
2:C:493:ILE:HD13	2:C:494:ASN:N	2.34	0.43
2:C:1198:LEU:HD13	2:C:1198:LEU:O	2.19	0.43
1:A:246:LYS:O	1:A:246:LYS:HG2	2.19	0.43
1:B:192:VAL:HG12	1:B:195:ARG:O	2.19	0.43
2:C:204:LEU:HD12	2:C:204:LEU:O	2.18	0.43

Continued on next page...

Continued from previous page...

Atom-1	Atom-2	Interatomic distance (Å)	Clash overlap (Å)
2:C:685:MET:HA	2:C:685:MET:HE2	2.00	0.43
2:C:790:ASP:C	2:C:792:GLY:H	2.22	0.43
2:C:1261:GLY:H	2:C:1264:GLN:HG3	1.84	0.43
3:D:822:MET:HB2	3:D:887:SER:OG	2.19	0.43
7:I:31:DG:H2"	7:I:32:DG:C8	2.53	0.43
1:A:239:GLN:HA	1:A:240:PRO:HD3	1.91	0.43
2:C:180:ARG:HG3	7:I:79:DT:H3	1.84	0.43
3:D:250:ARG:N	3:D:251:PRO:HD3	2.32	0.43
3:D:1338:ALA:HB3	3:D:1340:LYS:HE3	2.01	0.43
5:F:373:ARG:O	5:F:377:LYS:HG3	2.19	0.43
1:B:95:LYS:HD2	1:B:98:VAL:HB	2.00	0.43
2:C:677:ASN:HD21	3:D:779:ALA:HB1	1.83	0.43
2:C:804:PHE:CE1	3:D:713:GLU:HG3	2.53	0.43
2:C:1103:VAL:HG21	3:D:712:GLN:H	1.84	0.43
3:D:336:GLY:O	3:D:340:GLN:HG2	2.18	0.43
3:D:395:LYS:O	3:D:395:LYS:HD3	2.19	0.43
3:D:450:HIS:O	3:D:453:VAL:HG12	2.19	0.43
3:D:717:VAL:HG13	3:D:731:ARG:HG2	2.00	0.43
4:E:24:ALA:O	4:E:28:ARG:HG2	2.19	0.43
3:D:650:LYS:O	3:D:654:ILE:HG12	2.19	0.42
3:D:1145:PHE:HE1	3:D:1237:VAL:HG21	1.84	0.42
3:D:1162:ILE:HG22	3:D:1180:VAL:HB	2.00	0.42
3:D:1258:ARG:HA	3:D:1261:LEU:HD12	2.01	0.42
4:E:63:ILE:HG23	4:E:63:ILE:O	2.18	0.42
5:F:353:LEU:HD12	5:F:353:LEU:N	2.34	0.42
1:A:246:LYS:HD3	1:A:246:LYS:N	2.34	0.42
1:B:86:LYS:HG3	1:B:174:ASP:HB2	2.01	0.42
2:C:836:LEU:HD13	2:C:1054:LEU:HB2	2.01	0.42
3:D:746:LEU:HD13	3:D:754:ILE:HD11	2.01	0.42
3:D:1024:THR:O	3:D:1026:PRO:HD3	2.19	0.42
4:E:29:GLN:HA	4:E:32:VAL:HG22	2.01	0.42
6:H:130:LYS:O	6:H:134:LEU:HG	2.19	0.42
1:A:317:ARG:HD3	1:A:317:ARG:N	2.29	0.42
1:B:32:GLU:HB2	1:B:35:PHE:CD2	2.53	0.42
2:C:109:ALA:HA	2:C:110:PRO:HD3	1.92	0.42
2:C:152:SER:HA	2:C:153:PRO:HD3	1.92	0.42
3:D:131:PRO:HD2	3:D:135:ILE:CG2	2.49	0.42
3:D:282:LEU:O	3:D:286:ALA:HB3	2.19	0.42
3:D:1264:ALA:HB2	3:D:1280:VAL:HG12	2.01	0.42
3:D:1331:VAL:HG23	3:D:1332:LEU:HD22	2.01	0.42
6:G:57:LYS:HD2	6:H:136:PHE:CE2	2.54	0.42

Continued on next page...

Continued from previous page...

Atom-1	Atom-2	Interatomic distance (Å)	Clash overlap (Å)
8:J:9:DC:H2'	8:J:10:DC:C6	2.55	0.42
2:C:225:PHE:HD1	2:C:322:LEU:HB2	1.84	0.42
2:C:617:ALA:HA	2:C:636:CYS:HB3	2.01	0.42
2:C:755:LYS:HD2	2:C:756:TYR:N	2.32	0.42
2:C:937:ASP:HB3	2:C:939:VAL:HG22	2.00	0.42
3:D:378:LYS:HE2	3:D:382:TYR:CE1	2.54	0.42
3:D:1175:LEU:HB2	3:D:1187:GLU:HA	2.01	0.42
4:E:38:LEU:HD22	4:E:40:PRO:HD2	2.01	0.42
7:I:72:DT:H5''	7:I:73:DC:OP2	2.18	0.42
2:C:169:LYS:HE2	2:C:174:ALA:HA	2.02	0.42
3:D:116:PHE:HD1	3:D:123:ARG:HD2	1.83	0.42
3:D:422:LEU:HD12	3:D:434:ILE:HG22	2.01	0.42
1:A:165:GLU:HB2	1:A:166:ARG:CZ	2.49	0.42
1:A:265:ARG:HD3	1:A:265:ARG:C	2.40	0.42
1:B:118:ASP:HB3	1:B:121:VAL:HG12	2.02	0.42
2:C:142:GLU:CD	2:C:142:GLU:H	2.23	0.42
2:C:1087:TYR:CD1	2:C:1091:GLY:HA2	2.55	0.42
3:D:30:ILE:HA	3:D:33:TRP:CE3	2.54	0.42
3:D:384:LYS:HE3	3:D:415:VAL:HA	2.01	0.42
7:I:35:DA:H2''	7:I:36:DA:H8	1.85	0.42
1:A:79:LEU:O	1:A:83:LEU:HD13	2.19	0.42
1:A:237:VAL:C	1:A:238:ARG:HD3	2.39	0.42
2:C:694:ARG:HH11	2:C:694:ARG:HA	1.83	0.42
2:C:1294:LYS:NZ	3:D:472:LEU:HD13	2.34	0.42
2:C:1326:LEU:O	2:C:1326:LEU:HD23	2.20	0.42
3:D:614:LEU:N	3:D:614:LEU:HD12	2.34	0.42
3:D:972:LYS:N	3:D:972:LYS:HD2	2.35	0.42
8:J:76:DT:C2'	8:J:77:DG:H5'	2.50	0.42
2:C:490:GLN:HE21	5:F:472:GLN:HA	1.83	0.42
2:C:530:ILE:HG13	2:C:575:LEU:HD21	2.02	0.42
2:C:562:GLU:HA	2:C:680:LEU:HD23	2.00	0.42
3:D:128:LEU:HD23	3:D:188:LEU:HD22	2.01	0.42
3:D:252:LEU:HA	3:D:261:ALA:O	2.20	0.42
3:D:278:ARG:HH22	5:F:402:LEU:HD12	1.85	0.42
5:F:462:LYS:O	5:F:462:LYS:HD3	2.20	0.42
1:B:64:VAL:HG11	1:B:171:LEU:HD11	2.01	0.42
2:C:42:ASP:H	2:C:43:PRO:CD	2.33	0.42
2:C:145:ILE:N	2:C:145:ILE:HD12	2.35	0.42
2:C:217:THR:HA	2:C:221:LEU:HD11	2.01	0.42
2:C:573:ASN:C	2:C:573:ASN:HD22	2.23	0.42
2:C:678:ARG:HE	2:C:1106:ARG:HG3	1.85	0.42

Continued on next page...

Continued from previous page...

Atom-1	Atom-2	Interatomic distance (Å)	Clash overlap (Å)
3:D:932:MET:HE2	3:D:932:MET:HB2	1.92	0.42
3:D:1307:LEU:H	3:D:1307:LEU:CD2	2.33	0.42
5:F:252:LEU:O	5:F:252:LEU:HD23	2.20	0.42
7:I:32:DG:H2'	7:I:33:DC:C6	2.55	0.42
8:J:4:DG:H2'	8:J:5:DT:C6	2.55	0.42
1:B:13:LEU:HD13	1:B:14:VAL:N	2.35	0.42
2:C:794:LEU:HD13	2:C:796:LEU:HG	2.01	0.42
3:D:551:ARG:H	3:D:551:ARG:NE	2.17	0.42
3:D:973:LEU:O	3:D:1002:VAL:HA	2.19	0.42
4:E:72:GLN:HG2	4:E:73:GLN:H	1.85	0.42
2:C:816:ILE:O	2:C:1076:ILE:HA	2.19	0.41
7:I:24:DC:H2'	7:I:25:DA:C8	2.54	0.41
2:C:178:PRO:HB2	2:C:179:TYR:H	1.68	0.41
2:C:194:LEU:HG	2:C:324:LYS:HD3	2.03	0.41
2:C:811:ASN:HA	2:C:815:SER:HB2	2.02	0.41
3:D:576:ARG:HH22	3:D:594:GLN:N	2.17	0.41
3:D:781:LYS:HD2	3:D:781:LYS:N	2.35	0.41
3:D:783:LEU:HD13	3:D:783:LEU:N	2.35	0.41
3:D:1151:LYS:H	3:D:1151:LYS:CD	2.31	0.41
3:D:1373:ARG:HB3	3:D:1379:PRO:HG3	2.02	0.41
4:E:55:GLU:HB3	4:E:56:GLU:H	1.74	0.41
1:A:225:ALA:O	1:A:229:GLU:HG3	2.21	0.41
1:A:235:ARG:H	1:A:235:ARG:CD	2.22	0.41
2:C:402:ARG:HE	2:C:406:ASN:ND2	2.18	0.41
2:C:561:ILE:HD12	2:C:561:ILE:N	2.36	0.41
2:C:852:ALA:HB2	2:C:869:GLY:H	1.86	0.41
3:D:50:LYS:HA	3:D:51:PRO:HD3	1.95	0.41
3:D:288:PRO:HB2	3:D:289:ASP:H	1.76	0.41
3:D:690:ASN:ND2	3:D:690:ASN:H	2.18	0.41
3:D:1077:ALA:HB2	3:D:1100:PHE:CD1	2.54	0.41
6:H:40:TYR:HB3	6:H:94:VAL:HG11	2.02	0.41
6:H:58:GLU:HB2	6:H:174:GLN:HE22	1.85	0.41
1:A:99:ILE:N	1:A:99:ILE:HD12	2.35	0.41
1:B:77:ASP:O	1:B:81:ILE:HG12	2.21	0.41
1:B:200:LYS:HD3	1:B:200:LYS:N	2.34	0.41
2:C:577:VAL:HG13	2:C:578:TYR:CD1	2.55	0.41
2:C:668:ILE:HA	2:C:669:PRO:HD3	1.85	0.41
4:E:75:GLN:HA	4:E:78:ALA:HB3	2.02	0.41
5:F:608:ARG:HH11	5:F:611:LEU:HD11	1.84	0.41
6:H:14:PHE:CZ	6:H:97:ILE:HD12	2.55	0.41
7:I:62:DG:H22	8:J:36:DG:H22	1.66	0.41

Continued on next page...

Continued from previous page...

Atom-1	Atom-2	Interatomic distance (Å)	Clash overlap (Å)
1:A:297:LYS:NZ	8:J:64:DT:H2'	2.36	0.41
1:B:10:LYS:HA	1:B:11:PRO:HD2	1.86	0.41
1:B:16:ILE:N	1:B:16:ILE:HD12	2.34	0.41
2:C:445:ILE:N	2:C:445:ILE:HD12	2.36	0.41
3:D:1093:THR:HB	3:D:1095:MET:CE	2.50	0.41
5:F:554:ARG:O	5:F:558:VAL:HG23	2.19	0.41
5:F:593:LYS:HD2	5:F:596:ARG:HH21	1.85	0.41
6:H:75:LEU:HD21	6:H:102:PHE:CE1	2.55	0.41
1:A:31:LEU:HB2	1:A:199:ASP:O	2.20	0.41
1:B:194:GLN:HG2	1:B:195:ARG:H	1.85	0.41
2:C:176:ILE:HG12	2:C:178:PRO:HD3	2.03	0.41
2:C:187:GLU:HG2	2:C:188:PHE:H	1.85	0.41
2:C:1104:PRO:HA	3:D:740:LEU:HD21	2.03	0.41
2:C:1325:VAL:O	2:C:1329:GLU:HG3	2.20	0.41
3:D:213:LYS:O	3:D:217:LEU:HG	2.21	0.41
3:D:214:ARG:O	3:D:218:THR:HG23	2.21	0.41
3:D:488:ASN:HA	3:D:614:LEU:HD23	2.03	0.41
3:D:1165:PHE:HE2	3:D:1167:LYS:HE2	1.85	0.41
6:G:9:PRO:HB2	6:G:10:THR:H	1.55	0.41
1:B:11:PRO:HA	1:B:30:PRO:HB2	2.01	0.41
2:C:108:GLU:HG3	2:C:115:LYS:O	2.21	0.41
2:C:1246:ARG:NH1	2:C:1258:PRO:HB3	2.36	0.41
3:D:128:LEU:N	3:D:128:LEU:HD12	2.36	0.41
6:G:73:LEU:HD22	6:H:121:ALA:HA	2.03	0.41
3:D:385:LEU:HD22	3:D:390:LEU:HD12	2.02	0.41
3:D:959:LYS:HD3	3:D:960:LEU:N	2.36	0.41
3:D:978:ARG:HG2	3:D:999:TYR:CD1	2.55	0.41
3:D:1175:LEU:O	3:D:1176:VAL:C	2.59	0.41
3:D:1363:TYR:HD2	3:D:1365:TYR:H	1.69	0.41
5:F:157:ARG:HG3	5:F:159:SER:H	1.85	0.41
7:I:53:DA:OP2	7:I:53:DA:H2'	2.21	0.41
1:A:46:ILE:O	1:A:50:SER:HB2	2.21	0.41
1:B:224:LEU:O	1:B:224:LEU:HD23	2.21	0.41
2:C:138:ILE:HD12	2:C:138:ILE:N	2.36	0.41
2:C:468:LEU:O	2:C:471:VAL:HG12	2.21	0.41
2:C:518:ASN:ND2	2:C:761:GLN:HB2	2.34	0.41
2:C:594:VAL:HG12	2:C:599:VAL:HA	2.03	0.41
2:C:705:GLU:HB3	2:C:794:LEU:HB2	2.02	0.41
2:C:733:VAL:HG22	2:C:750:ILE:HG12	2.03	0.41
3:D:113:HIS:CD2	3:D:115:TRP:HB2	2.56	0.41
3:D:128:LEU:HD11	3:D:189:LEU:HD21	2.02	0.41

Continued on next page...

Continued from previous page...

Atom-1	Atom-2	Interatomic distance (Å)	Clash overlap (Å)
3:D:216:LYS:C	3:D:216:LYS:HD3	2.41	0.41
3:D:299:LEU:O	3:D:303:VAL:HG23	2.21	0.41
3:D:647:PRO:HG3	3:D:697:MET:HG3	2.02	0.41
3:D:1220:ILE:HD11	3:D:1229:VAL:HG23	2.03	0.41
5:F:476:ARG:N	5:F:476:ARG:HD2	2.36	0.41
5:F:509:THR:HA	5:F:510:PRO:HD2	1.88	0.41
6:G:123:ARG:HA	6:G:126:VAL:HG22	2.02	0.41
7:I:3:DC:H2''	7:I:4:DA:H5'	2.02	0.41
8:J:22:DC:H2'	8:J:23:DA:C8	2.56	0.41
1:B:107:ILE:HD12	1:B:107:ILE:N	2.35	0.41
2:C:1070:HIS:CE1	2:C:1111:GLN:HB3	2.56	0.41
2:C:1204:LEU:H	2:C:1205:PRO:HD2	1.86	0.41
3:D:115:TRP:CZ3	3:D:1329:THR:HG23	2.56	0.41
3:D:180:MET:HG3	3:D:296:LYS:HD3	2.03	0.41
3:D:343:LEU:HD12	8:J:18:DA:H2	1.85	0.41
3:D:800:LEU:HD21	3:D:1145:PHE:CD2	2.56	0.41
6:G:11:LEU:O	6:G:11:LEU:HD23	2.21	0.41
7:I:48:DA:H1'	7:I:49:DC:C6	2.56	0.41
2:C:77:GLU:HA	2:C:78:PRO:HD3	1.94	0.40
2:C:341:LEU:N	2:C:341:LEU:HD12	2.36	0.40
2:C:346:TYR:HE1	2:C:348:SER:OG	2.04	0.40
3:D:30:ILE:HG13	3:D:243:PRO:HG3	2.03	0.40
3:D:260:PHE:HB2	5:F:504:PRO:HG2	2.03	0.40
3:D:378:LYS:O	3:D:381:ILE:HG22	2.21	0.40
3:D:774:ILE:HA	3:D:777:HIS:CD2	2.47	0.40
3:D:925:GLU:CG	3:D:926:PRO:HD3	2.50	0.40
5:F:363:ARG:C	5:F:363:ARG:HD2	2.42	0.40
2:C:56:VAL:HG11	2:C:468:LEU:HD22	2.02	0.40
3:D:366:CYS:SG	3:D:437:PHE:HB2	2.61	0.40
3:D:686:TRP:HB2	3:D:746:LEU:HD11	2.03	0.40
3:D:704:GLU:HG2	3:D:705:THR:HG22	2.03	0.40
3:D:838:ARG:HG3	3:D:839:VAL:N	2.36	0.40
4:E:25:ARG:HH22	4:E:73:GLN:HG3	1.86	0.40
5:F:231:THR:O	5:F:235:ILE:HD13	2.21	0.40
6:G:69:PHE:N	6:G:123:ARG:HH22	2.18	0.40
6:H:9:PRO:HB2	6:H:10:THR:H	1.56	0.40
1:A:10:LYS:HE3	1:B:226:GLU:HB3	2.03	0.40
1:A:46:ILE:O	1:A:46:ILE:HG22	2.22	0.40
1:A:81:ILE:HG13	1:A:82:LEU:CD2	2.51	0.40
1:B:33:ARG:HA	1:B:33:ARG:NE	2.37	0.40
1:B:48:LEU:HD11	1:B:183:ILE:HB	2.03	0.40

Continued on next page...

Continued from previous page...

Atom-1	Atom-2	Interatomic distance (Å)	Clash overlap (Å)
2:C:207:THR:HG22	2:C:325:LEU:HD12	2.03	0.40
2:C:208:ILE:HB	2:C:362:ALA:HA	2.02	0.40
3:D:320:ASN:HD22	3:D:322:ARG:NH1	2.15	0.40
3:D:573:THR:HG23	3:D:575:GLY:N	2.34	0.40
3:D:718:SER:O	3:D:719:PHE:HB2	2.21	0.40
3:D:1075:ARG:HA	3:D:1076:PRO:HD2	1.82	0.40
3:D:1304:ARG:HD3	3:D:1304:ARG:N	2.36	0.40
4:E:26:ARG:HD3	4:E:26:ARG:O	2.21	0.40
6:H:171:GLU:O	6:H:175:ILE:HG12	2.21	0.40
7:I:20:DA:H2'	7:I:21:DT:C6	2.56	0.40
1:A:86:LYS:HE3	1:A:174:ASP:HB2	2.03	0.40
1:B:66:HIS:CG	1:B:67:GLU:H	2.39	0.40
1:B:115:ILE:N	1:B:115:ILE:HD12	2.35	0.40
2:C:82:VAL:HG22	2:C:92:TYR:CE1	2.57	0.40
2:C:896:THR:HB	2:C:898:GLU:OE2	2.22	0.40
2:C:897:PRO:HG2	2:C:898:GLU:OE1	2.22	0.40
3:D:795:TYR:HB3	3:D:1138:LEU:HD23	2.03	0.40
3:D:877:VAL:HG12	3:D:877:VAL:O	2.21	0.40
3:D:1224:ARG:NE	3:D:1228:ALA:HB1	2.37	0.40
6:G:84:ALA:HB3	9:G:679:CMP:H8	2.02	0.40
7:I:80:DT:H6	7:I:80:DT:H2'	1.70	0.40
1:A:254:LEU:HA	1:A:321:TRP:HZ3	1.86	0.40
2:C:43:PRO:HB2	2:C:44:GLU:H	1.73	0.40
2:C:354:ASP:HA	2:C:355:PRO:HD3	1.82	0.40
2:C:742:TYR:HA	2:C:743:PRO:HD3	1.93	0.40
3:D:27:PRO:HD2	3:D:236:TRP:HZ3	1.85	0.40
3:D:156:ARG:N	3:D:156:ARG:HD3	2.36	0.40
3:D:690:ASN:HD22	3:D:691:ASP:N	2.20	0.40
5:F:548:LEU:O	5:F:548:LEU:HD23	2.22	0.40

There are no symmetry-related clashes.

5.3 Torsion angles [i](#)

5.3.1 Protein backbone [i](#)

In the following table, the Percentiles column shows the percent Ramachandran outliers of the chain as a percentile score with respect to all PDB entries followed by that with respect to all EM entries.

The Analysed column shows the number of residues for which the backbone conformation was analysed, and the total number of residues.

Mol	Chain	Analysed	Favoured	Allowed	Outliers	Percentiles	
1	A	318/329 (97%)	259 (81%)	46 (14%)	13 (4%)	3	23
1	B	233/329 (71%)	191 (82%)	38 (16%)	4 (2%)	9	42
2	C	1085/1342 (81%)	822 (76%)	217 (20%)	46 (4%)	3	22
3	D	1366/1413 (97%)	1075 (79%)	232 (17%)	59 (4%)	2	22
4	E	88/90 (98%)	68 (77%)	14 (16%)	6 (7%)	1	15
5	F	475/613 (78%)	401 (84%)	54 (11%)	20 (4%)	3	22
6	G	199/209 (95%)	172 (86%)	24 (12%)	3 (2%)	10	46
6	H	199/209 (95%)	182 (92%)	16 (8%)	1 (0%)	29	69
All	All	3963/4534 (87%)	3170 (80%)	641 (16%)	152 (4%)	5	24

All (152) Ramachandran outliers are listed below:

Mol	Chain	Res	Type
1	A	52	PRO
1	A	240	PRO
1	B	52	PRO
2	C	180	ARG
2	C	332	ARG
2	C	414	ILE
2	C	419	ILE
2	C	808	ASN
3	D	131	PRO
3	D	320	ASN
3	D	321	LYS
3	D	526	VAL
3	D	530	PRO
4	E	59	ILE
4	E	72	GLN
4	E	86	ILE
5	F	490	PRO
2	C	43	PRO
2	C	165	HIS
2	C	178	PRO
2	C	179	TYR
2	C	181	GLY
2	C	190	PRO
2	C	409	LEU
2	C	787	PRO
2	C	833	ILE
2	C	877	VAL

Continued on next page...

Continued from previous page...

Mol	Chain	Res	Type
2	C	1284	ALA
2	C	1295	SER
3	D	141	PHE
3	D	170	GLU
3	D	180	MET
3	D	185	ILE
3	D	288	PRO
3	D	289	ASP
3	D	318	GLY
3	D	331	ILE
3	D	402	GLU
3	D	410	ASP
3	D	430	HIS
3	D	518	VAL
3	D	555	TYR
3	D	685	ILE
3	D	718	SER
3	D	1293	GLU
4	E	73	GLN
5	F	238	LYS
5	F	395	THR
5	F	491	GLU
5	F	609	SER
6	G	14	PHE
1	A	61	ILE
1	A	152	TYR
1	A	179	PRO
1	A	188	GLU
1	A	323	PRO
1	B	188	GLU
2	C	372	PRO
2	C	489	PRO
2	C	625	GLU
2	C	812	PHE
2	C	1103	VAL
2	C	1110	GLY
2	C	1201	LEU
2	C	1204	LEU
3	D	135	ILE
3	D	211	GLU
3	D	285	LEU
3	D	716	GLN

Continued on next page...

Continued from previous page...

Mol	Chain	Res	Type
3	D	717	VAL
3	D	720	ASN
3	D	814	CYS
3	D	815	GLY
3	D	817	HIS
3	D	832	LYS
4	E	35	LYS
5	F	114	GLU
5	F	398	GLY
5	F	542	ALA
5	F	543	ALA
5	F	568	ASN
6	G	22	LYS
6	G	56	GLY
1	A	158	ARG
1	B	93	GLN
2	C	84	GLU
2	C	163	LYS
2	C	169	LYS
2	C	387	ASN
2	C	507	GLY
2	C	662	SER
2	C	670	PHE
2	C	804	PHE
2	C	1283	ALA
2	C	1341	ASP
3	D	101	ARG
3	D	176	PHE
3	D	282	LEU
3	D	517	CYS
3	D	593	ASN
3	D	721	SER
3	D	752	GLY
3	D	892	PHE
3	D	947	GLU
3	D	1378	ALA
5	F	173	ASP
5	F	504	PRO
5	F	541	ARG
5	F	572	THR
5	F	581	ASP
6	H	56	GLY

Continued on next page...

Continued from previous page...

Mol	Chain	Res	Type
1	A	49	SER
1	A	187	VAL
1	A	202	VAL
1	B	167	PRO
2	C	111	GLU
2	C	337	PHE
2	C	348	SER
2	C	646	SER
2	C	1223	ARG
3	D	47	ARG
3	D	322	ARG
3	D	496	GLY
3	D	538	ARG
3	D	556	GLU
3	D	558	ASP
3	D	821	MET
5	F	570	ASP
1	A	5	VAL
2	C	488	MET
3	D	938	GLY
3	D	1082	ASP
3	D	1285	VAL
2	C	345	PRO
3	D	323	PRO
5	F	333	VAL
2	C	874	GLY
3	D	73	GLY
3	D	313	GLY
3	D	1176	VAL
5	F	308	GLY
1	A	29	GLU
2	C	42	ASP
2	C	907	GLY
2	C	1044	PRO
3	D	159	ILE
3	D	1381	ALA
5	F	582	VAL
3	D	401	VAL
4	E	57	GLY
5	F	606	VAL
3	D	82	GLY

5.3.2 Protein sidechains [i](#)

In the following table, the Percentiles column shows the percent sidechain outliers of the chain as a percentile score with respect to all PDB entries followed by that with respect to all EM entries.

The Analysed column shows the number of residues for which the sidechain conformation was analysed, and the total number of residues.

Mol	Chain	Analysed	Rotameric	Outliers	Percentiles	
1	A	278/286 (97%)	268 (96%)	10 (4%)	35	59
1	B	201/286 (70%)	193 (96%)	8 (4%)	31	55
2	C	936/1157 (81%)	896 (96%)	40 (4%)	29	53
3	D	1138/1174 (97%)	1075 (94%)	63 (6%)	21	47
4	E	74/74 (100%)	67 (90%)	7 (10%)	8	27
5	F	423/540 (78%)	407 (96%)	16 (4%)	33	57
6	G	173/180 (96%)	172 (99%)	1 (1%)	86	92
6	H	173/180 (96%)	172 (99%)	1 (1%)	86	92
All	All	3396/3877 (88%)	3250 (96%)	146 (4%)	33	53

All (146) residues with a non-rotameric sidechain are listed below:

Mol	Chain	Res	Type
1	A	2	GLN
1	A	166	ARG
1	A	195	ARG
1	A	219	ARG
1	A	227	GLN
1	A	235	ARG
1	A	246	LYS
1	A	265	ARG
1	A	297	LYS
1	A	317	ARG
1	B	2	GLN
1	B	6	THR
1	B	86	LYS
1	B	140	ILE
1	B	142	MET
1	B	182	ARG
1	B	200	LYS
1	B	234	LEU
2	C	11	ILE

Continued on next page...

Continued from previous page...

Mol	Chain	Res	Type
2	C	20	GLN
2	C	22	LEU
2	C	83	GLN
2	C	86	GLN
2	C	161	LYS
2	C	173	ASN
2	C	176	ILE
2	C	220	ILE
2	C	221	LEU
2	C	324	LYS
2	C	333	ILE
2	C	346	TYR
2	C	351	LEU
2	C	397	LEU
2	C	452	ARG
2	C	493	ILE
2	C	540	ARG
2	C	573	ASN
2	C	593	LYS
2	C	595	THR
2	C	687	ARG
2	C	719	LYS
2	C	750	ILE
2	C	755	LYS
2	C	794	LEU
2	C	808	ASN
2	C	811	ASN
2	C	817	LEU
2	C	821	ARG
2	C	877	VAL
2	C	909	LYS
2	C	914	LYS
2	C	1048	LYS
2	C	1054	LEU
2	C	1072	ASN
2	C	1108	ASN
2	C	1234	LYS
2	C	1308	ILE
2	C	1337	ILE
3	D	30	ILE
3	D	39	LYS
3	D	81	ARG

Continued on next page...

Continued from previous page...

Mol	Chain	Res	Type
3	D	94	GLN
3	D	124	ILE
3	D	130	MET
3	D	135	ILE
3	D	139	LEU
3	D	151	MET
3	D	156	ARG
3	D	180	MET
3	D	229	GLN
3	D	290	ILE
3	D	291	ILE
3	D	293	ARG
3	D	300	GLN
3	D	334	LYS
3	D	335	GLN
3	D	411	ILE
3	D	431	ARG
3	D	442	ILE
3	D	483	LEU
3	D	535	ARG
3	D	549	LYS
3	D	551	ARG
3	D	599	LYS
3	D	603	LYS
3	D	611	ILE
3	D	624	ILE
3	D	649	LYS
3	D	665	GLN
3	D	685	ILE
3	D	690	ASN
3	D	783	LEU
3	D	798	ARG
3	D	820	ILE
3	D	822	MET
3	D	850	LYS
3	D	856	ILE
3	D	861	ASN
3	D	863	LEU
3	D	908	ILE
3	D	915	ILE
3	D	953	LYS
3	D	972	LYS

Continued on next page...

Continued from previous page...

Mol	Chain	Res	Type
3	D	979	ASN
3	D	983	LYS
3	D	1025	MET
3	D	1075	ARG
3	D	1079	LYS
3	D	1126	GLN
3	D	1140	ARG
3	D	1151	LYS
3	D	1167	LYS
3	D	1169	THR
3	D	1172	LYS
3	D	1192	LYS
3	D	1203	ARG
3	D	1247	LYS
3	D	1249	ASN
3	D	1304	ARG
3	D	1311	LYS
3	D	1357	ILE
4	E	7	GLN
4	E	26	ARG
4	E	52	ARG
4	E	56	GLU
4	E	63	ILE
4	E	70	GLN
4	E	86	ILE
5	F	162	ILE
5	F	238	LYS
5	F	246	GLN
5	F	264	LYS
5	F	289	LYS
5	F	300	LYS
5	F	359	LYS
5	F	402	LEU
5	F	405	ILE
5	F	418	LYS
5	F	468	ARG
5	F	505	ILE
5	F	530	LEU
5	F	562	ARG
5	F	588	ARG
5	F	608	ARG
6	G	112	ILE

Continued on next page...

Continued from previous page...

Mol	Chain	Res	Type
6	H	112	ILE

Sometimes sidechains can be flipped to improve hydrogen bonding and reduce clashes. All (115) such sidechains are listed below:

Mol	Chain	Res	Type
1	A	2	GLN
1	A	41	ASN
1	A	66	HIS
1	A	137	ASN
1	A	186	ASN
1	A	194	GLN
1	A	227	GLN
1	A	283	GLN
1	B	2	GLN
1	B	23	HIS
1	B	41	ASN
1	B	66	HIS
1	B	137	ASN
2	C	20	GLN
2	C	36	GLN
2	C	60	GLN
2	C	83	GLN
2	C	86	GLN
2	C	120	GLN
2	C	148	GLN
2	C	339	ASN
2	C	463	GLN
2	C	517	GLN
2	C	518	ASN
2	C	519	ASN
2	C	573	ASN
2	C	618	GLN
2	C	622	ASN
2	C	659	GLN
2	C	677	ASN
2	C	686	GLN
2	C	760	ASN
2	C	762	ASN
2	C	766	ASN
2	C	798	GLN
2	C	808	ASN
2	C	832	HIS

Continued on next page...

Continued from previous page...

Mol	Chain	Res	Type
2	C	1061	GLN
2	C	1072	ASN
2	C	1108	ASN
2	C	1111	GLN
2	C	1244	HIS
2	C	1264	GLN
2	C	1268	GLN
2	C	1288	GLN
2	C	1307	ASN
2	C	1313	HIS
3	D	45	ASN
3	D	94	GLN
3	D	113	HIS
3	D	158	GLN
3	D	164	GLN
3	D	229	GLN
3	D	274	ASN
3	D	300	GLN
3	D	320	ASN
3	D	335	GLN
3	D	340	GLN
3	D	341	ASN
3	D	430	HIS
3	D	435	GLN
3	D	448	GLN
3	D	458	ASN
3	D	489	ASN
3	D	495	ASN
3	D	667	GLN
3	D	669	GLN
3	D	690	ASN
3	D	708	ASN
3	D	712	GLN
3	D	777	HIS
3	D	792	ASN
3	D	817	HIS
3	D	861	ASN
3	D	865	HIS
3	D	867	GLN
3	D	875	ASN
3	D	962	ASN
3	D	979	ASN

Continued on next page...

Continued from previous page...

Mol	Chain	Res	Type
3	D	1010	GLN
3	D	1019	ASN
3	D	1044	GLN
3	D	1049	GLN
3	D	1098	GLN
3	D	1126	GLN
3	D	1195	GLN
3	D	1244	GLN
3	D	1249	ASN
3	D	1279	GLN
3	D	1295	ASN
3	D	1326	GLN
3	D	1366	HIS
4	E	7	GLN
4	E	60	ASN
5	F	128	ASN
5	F	129	GLN
5	F	131	GLN
5	F	149	ASN
5	F	180	HIS
5	F	187	GLN
5	F	258	GLN
5	F	309	ASN
5	F	357	GLN
5	F	406	GLN
5	F	437	GLN
5	F	469	GLN
5	F	579	GLN
6	G	65	ASN
6	G	66	GLN
6	G	125	GLN
6	G	133	ASN
6	H	17	HIS
6	H	21	HIS
6	H	66	GLN
6	H	133	ASN

5.3.3 RNA

There are no RNA molecules in this entry.

5.4 Non-standard residues in protein, DNA, RNA chains [i](#)

There are no non-standard protein/DNA/RNA residues in this entry.

5.5 Carbohydrates [i](#)

There are no monosaccharides in this entry.

5.6 Ligand geometry [i](#)

2 ligands are modelled in this entry.

In the following table, the Counts columns list the number of bonds (or angles) for which Mogul statistics could be retrieved, the number of bonds (or angles) that are observed in the model and the number of bonds (or angles) that are defined in the Chemical Component Dictionary. The Link column lists molecule types, if any, to which the group is linked. The Z score for a bond length (or angle) is the number of standard deviations the observed value is removed from the expected value. A bond length (or angle) with $|Z| > 2$ is considered an outlier worth inspection. RMSZ is the root-mean-square of all Z scores of the bond lengths (or angles).

Mol	Type	Chain	Res	Link	Bond lengths			Bond angles		
					Counts	RMSZ	# Z > 2	Counts	RMSZ	# Z > 2
9	CMP	H	680	-	22,25,25	1.50	4 (18%)	24,39,39	1.63	3 (12%)
9	CMP	G	679	-	22,25,25	1.50	4 (18%)	24,39,39	1.63	3 (12%)

In the following table, the Chirals column lists the number of chiral outliers, the number of chiral centers analysed, the number of these observed in the model and the number defined in the Chemical Component Dictionary. Similar counts are reported in the Torsion and Rings columns. '-' means no outliers of that kind were identified.

Mol	Type	Chain	Res	Link	Chirals	Torsions	Rings
9	CMP	H	680	-	-	0/0/31/31	0/4/4/4
9	CMP	G	679	-	-	0/0/31/31	0/4/4/4

All (8) bond length outliers are listed below:

Mol	Chain	Res	Type	Atoms	Z	Observed(Å)	Ideal(Å)
9	G	679	CMP	P-O5'	4.09	1.62	1.57
9	H	680	CMP	P-O5'	4.08	1.62	1.57
9	H	680	CMP	C5-C4	2.50	1.47	1.40
9	G	679	CMP	C5-C4	2.49	1.47	1.40
9	G	679	CMP	P-O3'	2.40	1.61	1.57
9	H	680	CMP	P-O3'	2.39	1.61	1.57

Continued on next page...

Continued from previous page...

Mol	Chain	Res	Type	Atoms	Z	Observed(Å)	Ideal(Å)
9	H	680	CMP	O4'-C1'	2.17	1.44	1.41
9	G	679	CMP	O4'-C1'	2.16	1.44	1.41

All (6) bond angle outliers are listed below:

Mol	Chain	Res	Type	Atoms	Z	Observed(°)	Ideal(°)
9	H	680	CMP	O3'-C3'-C4'	-5.07	106.88	110.71
9	G	679	CMP	O3'-C3'-C4'	-5.07	106.88	110.71
9	H	680	CMP	N3-C2-N1	-3.20	123.67	128.68
9	G	679	CMP	N3-C2-N1	-3.15	123.76	128.68
9	G	679	CMP	C4-C5-N7	-2.70	106.58	109.40
9	H	680	CMP	C4-C5-N7	-2.68	106.60	109.40

There are no chirality outliers.

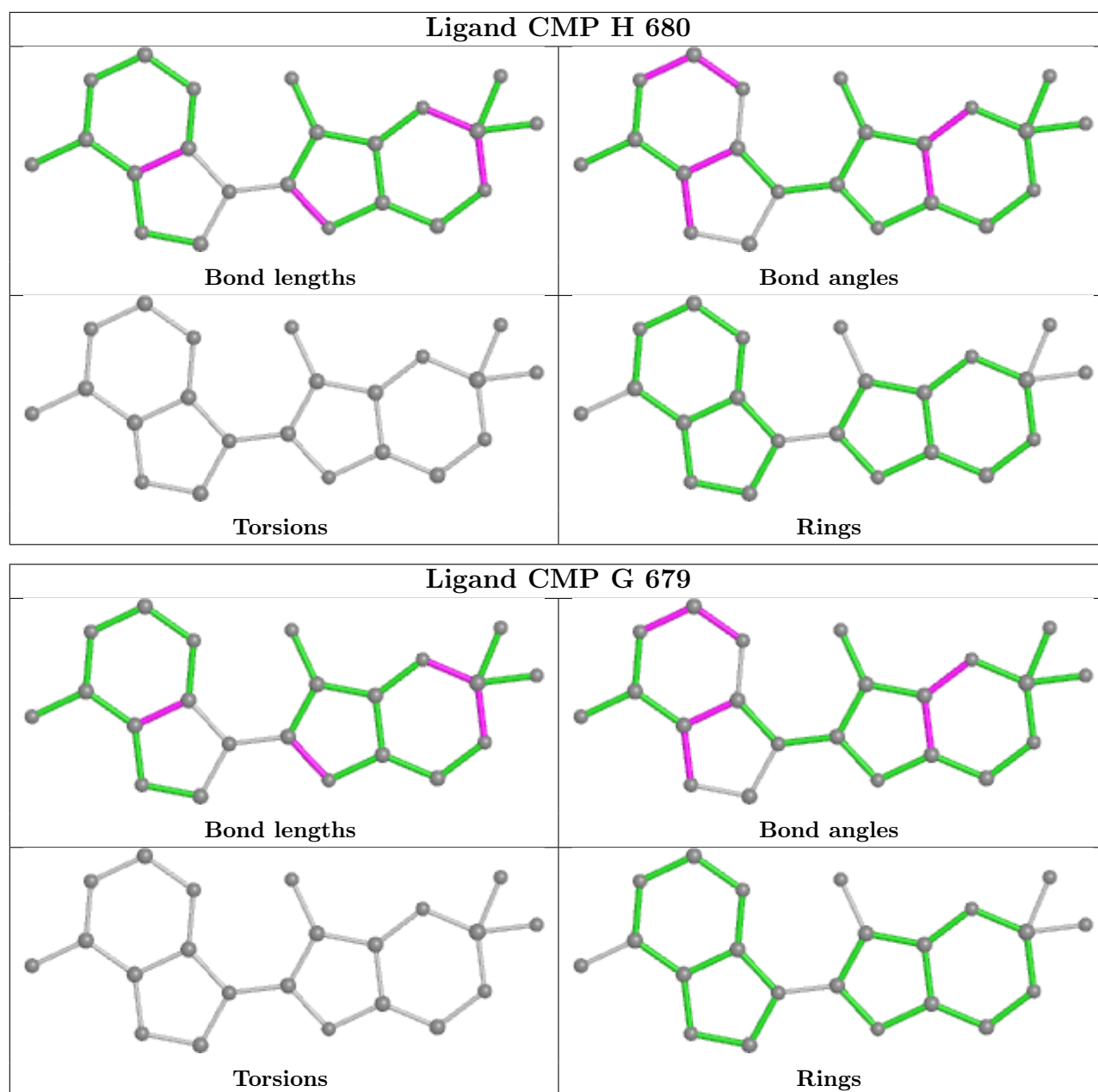
There are no torsion outliers.

There are no ring outliers.

2 monomers are involved in 5 short contacts:

Mol	Chain	Res	Type	Clashes	Symm-Clashes
9	H	680	CMP	2	0
9	G	679	CMP	3	0

The following is a two-dimensional graphical depiction of Mogul quality analysis of bond lengths, bond angles, torsion angles, and ring geometry for all instances of the Ligand of Interest. In addition, ligands with molecular weight > 250 and outliers as shown on the validation Tables will also be included. For torsion angles, if less than 5% of the Mogul distribution of torsion angles is within 10 degrees of the torsion angle in question, then that torsion angle is considered an outlier. Any bond that is central to one or more torsion angles identified as an outlier by Mogul will be highlighted in the graph. For rings, the root-mean-square deviation (RMSD) between the ring in question and similar rings identified by Mogul is calculated over all ring torsion angles. If the average RMSD is greater than 60 degrees and the minimal RMSD between the ring in question and any Mogul-identified rings is also greater than 60 degrees, then that ring is considered an outlier. The outliers are highlighted in purple. The color gray indicates Mogul did not find sufficient equivalents in the CSD to analyse the geometry.



5.7 Other polymers [i](#)

There are no such residues in this entry.

5.8 Polymer linkage issues [i](#)

There are no chain breaks in this entry.

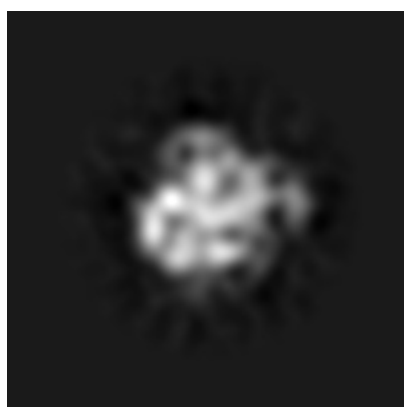
6 Map visualisation [i](#)

This section contains visualisations of the EMDB entry EMD-5127. These allow visual inspection of the internal detail of the map and identification of artifacts.

No raw map or half-maps were deposited for this entry and therefore no images, graphs, etc. pertaining to the raw map can be shown.

6.1 Orthogonal projections [i](#)

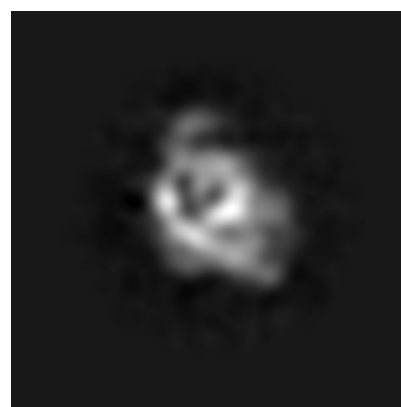
6.1.1 Primary map



X



Y



Z

The images above show the map projected in three orthogonal directions.

6.2 Central slices [i](#)

6.2.1 Primary map



X Index: 40



Y Index: 40



Z Index: 40

The images above show central slices of the map in three orthogonal directions.

6.3 Largest variance slices [\(i\)](#)

6.3.1 Primary map



X Index: 44



Y Index: 39

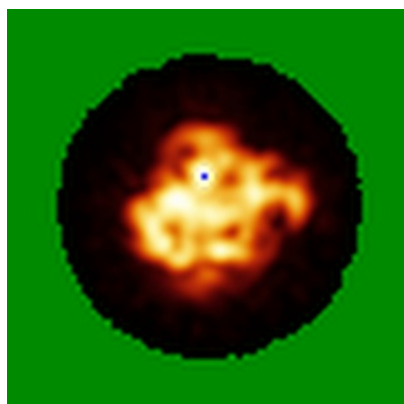


Z Index: 41

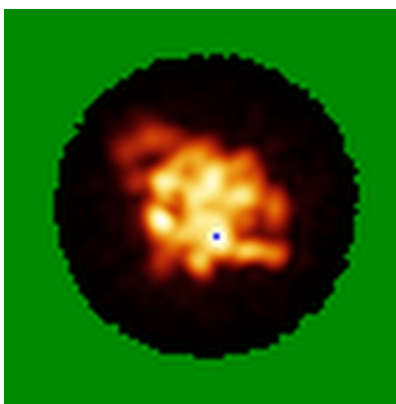
The images above show the largest variance slices of the map in three orthogonal directions.

6.4 Orthogonal standard-deviation projections (False-color) [\(i\)](#)

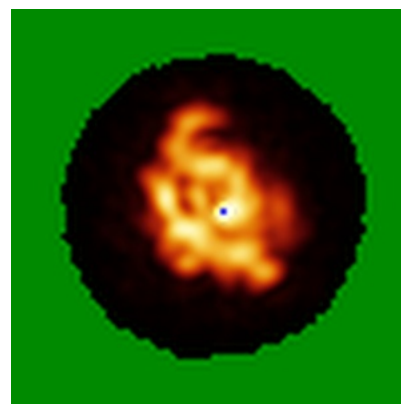
6.4.1 Primary map



X



Y

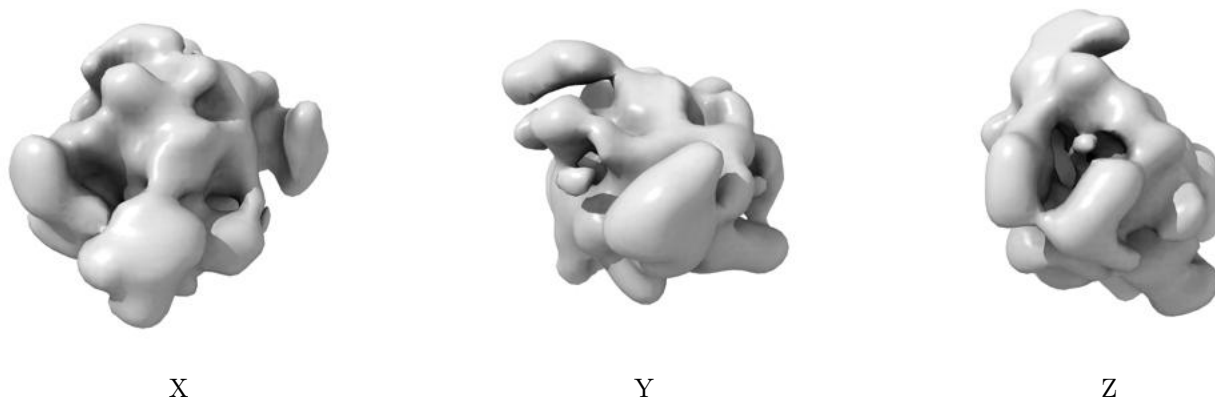


Z

The images above show the map standard deviation projections with false color in three orthogonal directions. Minimum values are shown in green, max in blue, and dark to light orange shades represent small to large values respectively.

6.5 Orthogonal surface views [i](#)

6.5.1 Primary map



The images above show the 3D surface view of the map at the recommended contour level 2.8. These images, in conjunction with the slice images, may facilitate assessment of whether an appropriate contour level has been provided.

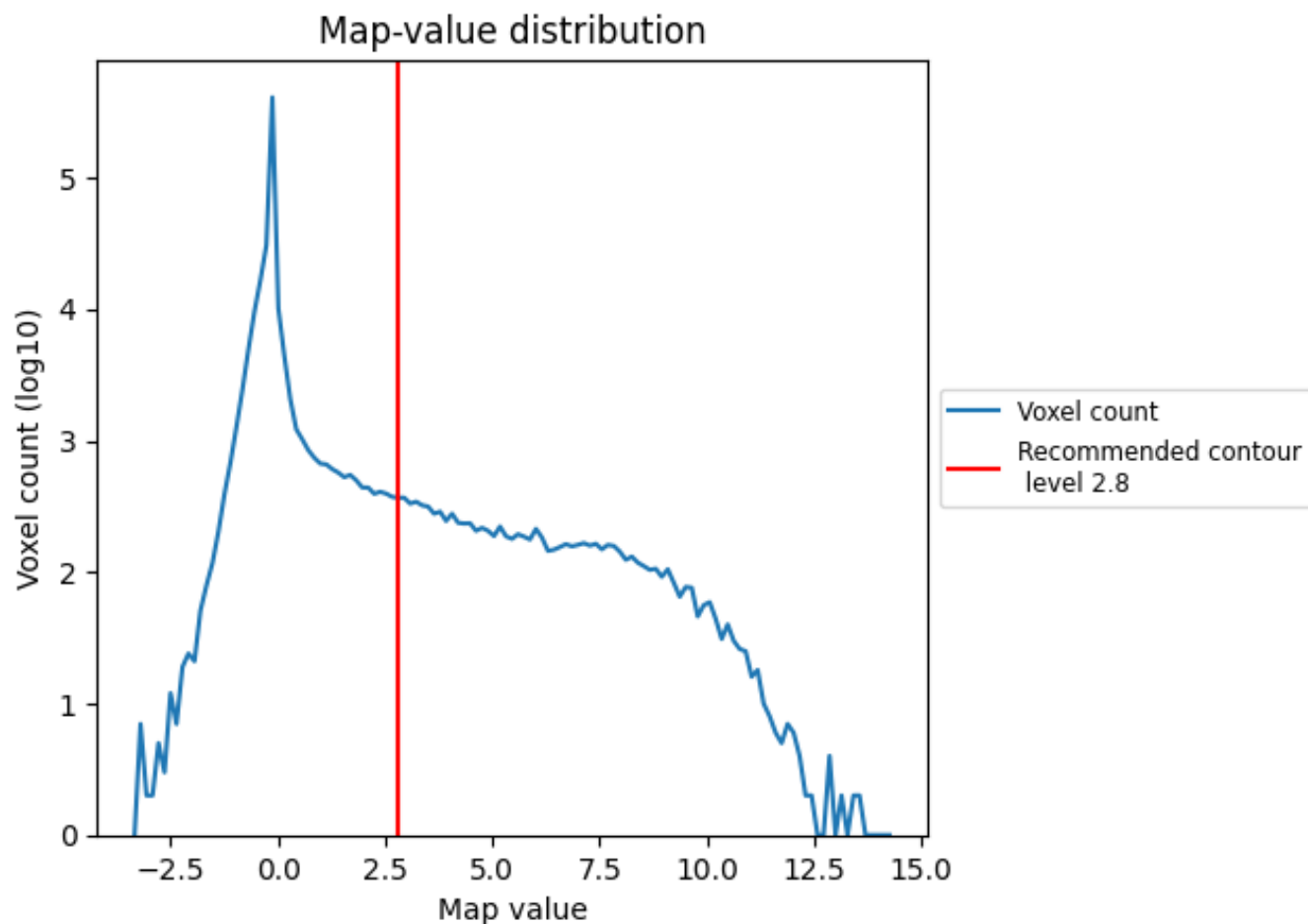
6.6 Mask visualisation [i](#)

This section was not generated. No masks/segmentation were deposited.

7 Map analysis [i](#)

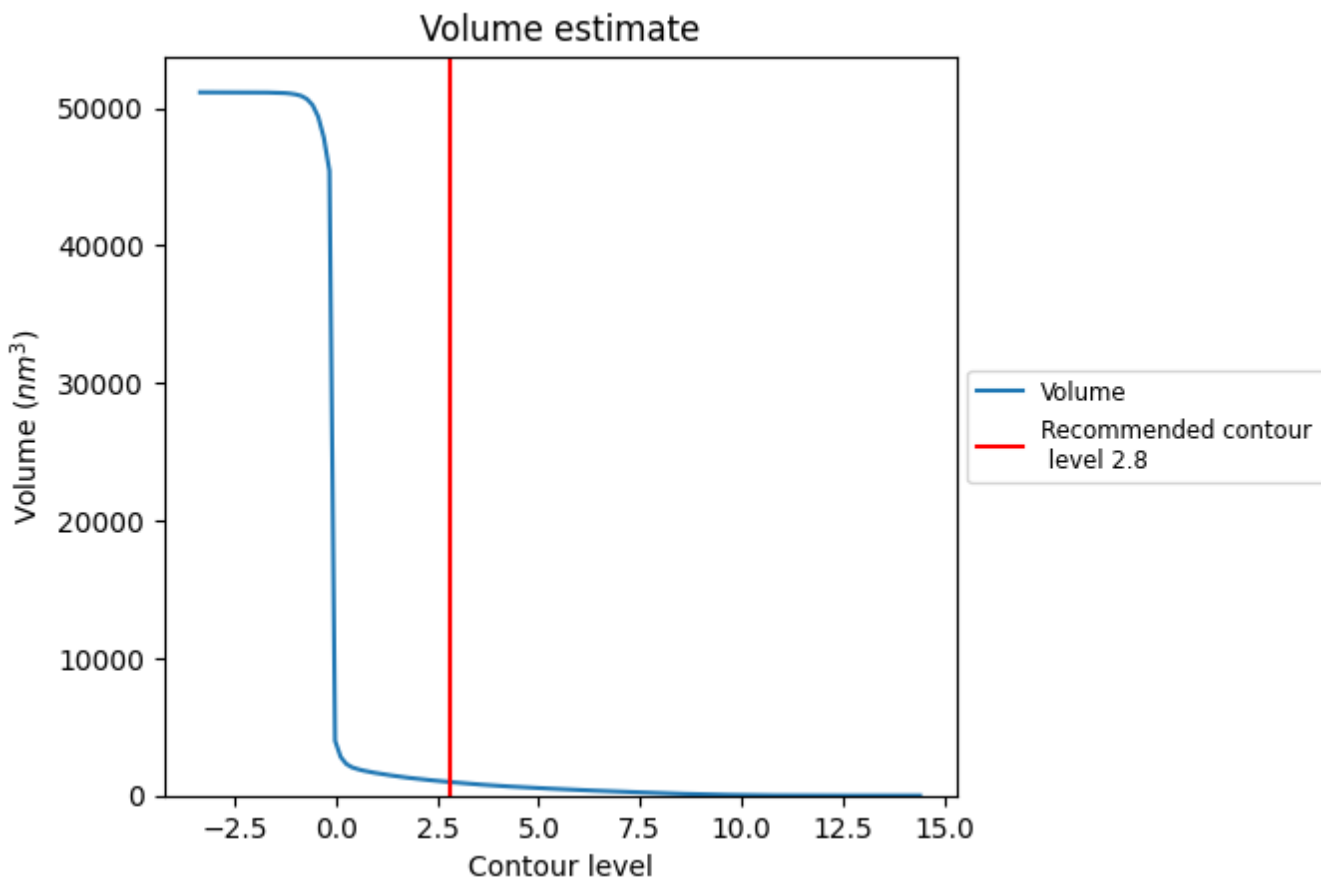
This section contains the results of statistical analysis of the map.

7.1 Map-value distribution [i](#)



The map-value distribution is plotted in 128 intervals along the x-axis. The y-axis is logarithmic. A spike in this graph at zero usually indicates that the volume has been masked.

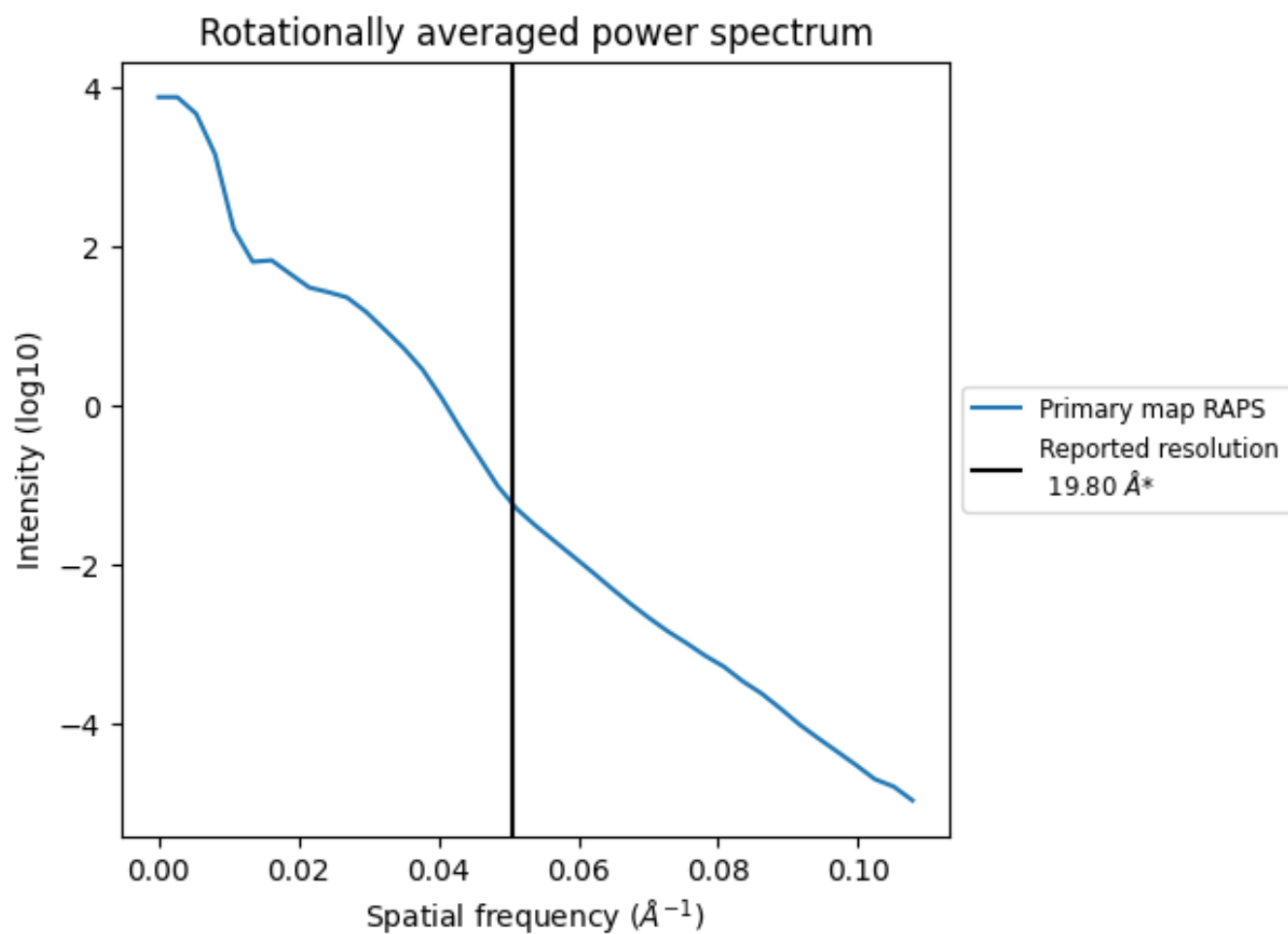
7.2 Volume estimate [i](#)



The volume at the recommended contour level is 989 nm³; this corresponds to an approximate mass of 893 kDa.

The volume estimate graph shows how the enclosed volume varies with the contour level. The recommended contour level is shown as a vertical line and the intersection between the line and the curve gives the volume of the enclosed surface at the given level.

7.3 Rotationally averaged power spectrum [i](#)



*Reported resolution corresponds to spatial frequency of 0.051 Å⁻¹

8 Fourier-Shell correlation

This section was not generated. No FSC curve or half-maps provided.

9 Map-model fit [i](#)

This section contains information regarding the fit between EMDB map EMD-5127 and PDB model 3IYD. Per-residue inclusion information can be found in section 3 on page 7.

9.1 Map-model overlay [i](#)



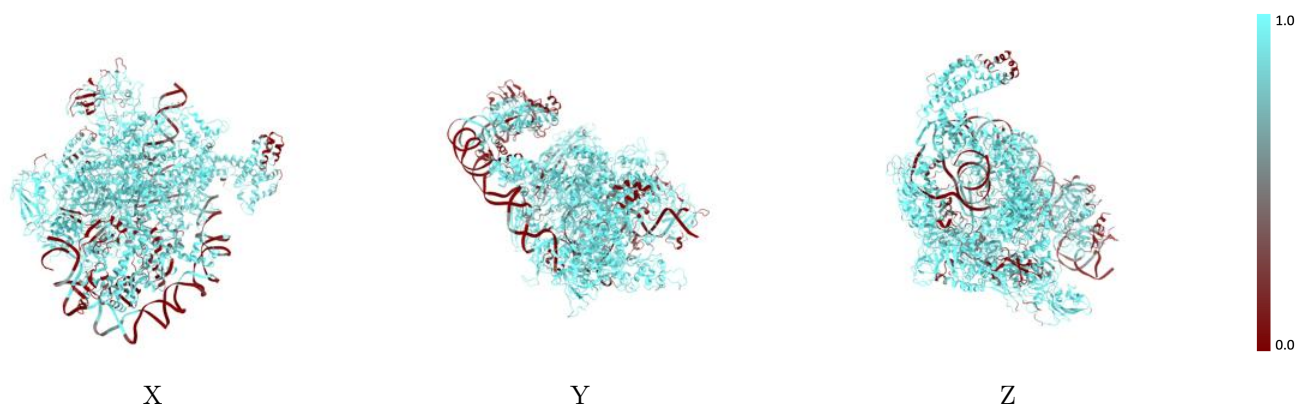
The images above show the 3D surface view of the map at the recommended contour level 2.8 at 50% transparency in yellow overlaid with a ribbon representation of the model coloured in blue. These images allow for the visual assessment of the quality of fit between the atomic model and the map.

9.2 Q-score mapped to coordinate model [i](#)



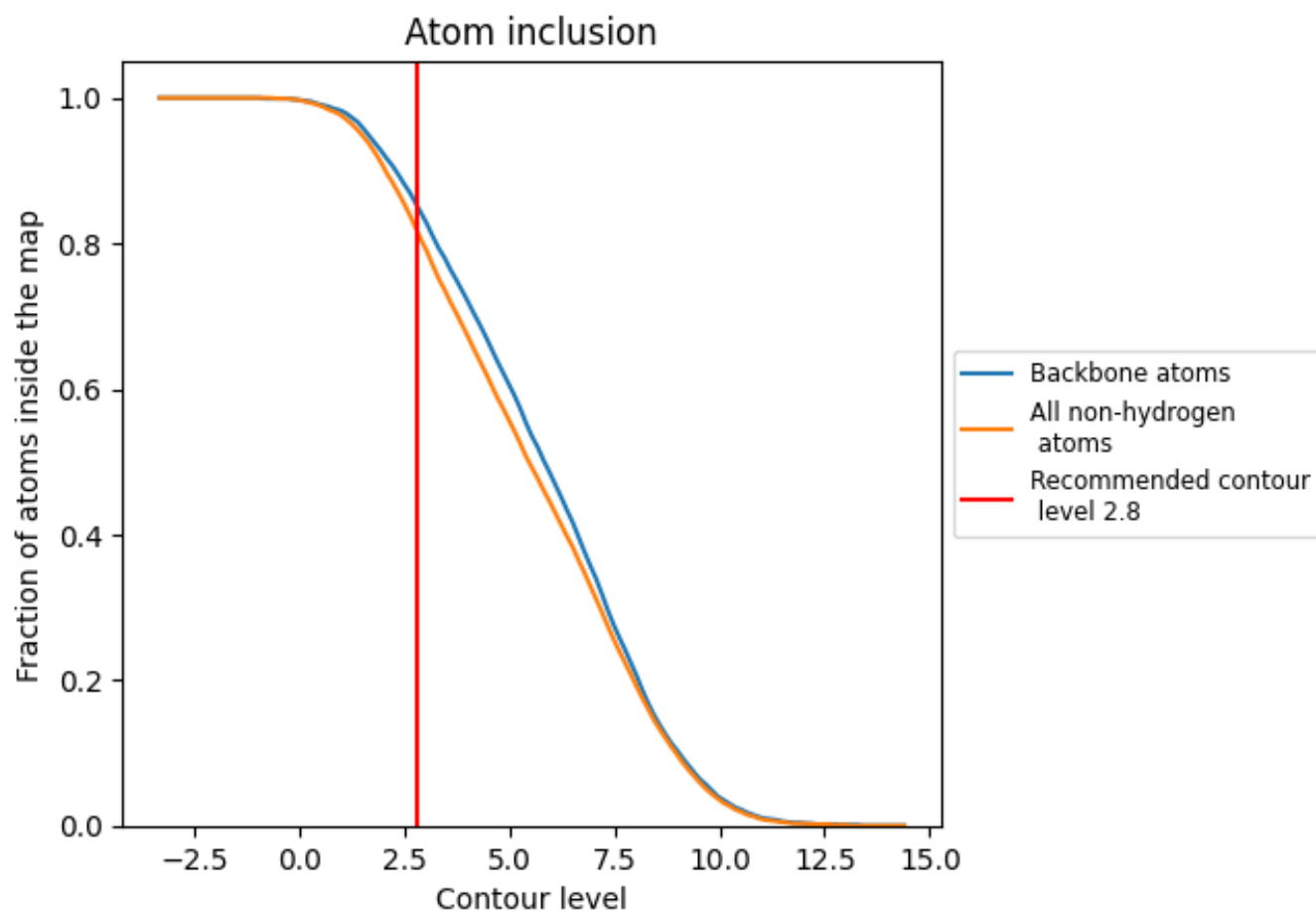
The images above show the model with each residue coloured according to its Q-score. This shows their resolvability in the map with higher Q-score values reflecting better resolvability. Please note: Q-score is calculating the resolvability of atoms, and thus high values are only expected at resolutions at which atoms can be resolved. Low Q-score values may therefore be expected for many entries.

9.3 Atom inclusion mapped to coordinate model [i](#)



The images above show the model with each residue coloured according to its atom inclusion. This shows to what extent they are inside the map at the recommended contour level (2.8).























9.4 Atom inclusion [i](#)



At the recommended contour level, 85% of all backbone atoms, 82% of all non-hydrogen atoms, are inside the map.

9.5 Map-model fit summary [i](#)

The table lists the average atom inclusion at the recommended contour level (2.8) and Q-score for the entire model and for each chain.

Chain	Atom inclusion	Q-score
All	 0.8160	 0.0460
A	 0.9100	 0.0450
B	 0.9070	 0.0500
C	 0.9300	 0.0460
D	 0.9080	 0.0500
E	 0.9610	 0.0370
F	 0.8800	 0.0590
G	 0.6420	 0.0480
H	 0.5480	 0.0440
I	 0.3510	 0.0250
J	 0.3030	 0.0170

