



Full wwPDB X-ray Structure Validation Report ⓘ

Dec 19, 2023 – 08:39 AM EST

PDB ID : 1IX1
Title : Crystal Structure of P.aeruginosa Peptide deformylase Complexed with Antibiotic Actinonin
Authors : Kim, H.-W.; Yoon, H.-J.; Lee, J.Y.; Han, B.W.; Yang, J.K.; Lee, B.I.; Ahn, H.J.; Lee, H.H.; Suh, S.W.
Deposited on : 2002-06-07
Resolution : 1.85 Å(reported)

This is a Full wwPDB X-ray Structure Validation Report for a publicly released PDB entry.

We welcome your comments at validation@mail.wwpdb.org

A user guide is available at

<https://www.wwpdb.org/validation/2017/XrayValidationReportHelp>

with specific help available everywhere you see the ⓘ symbol.

The types of validation reports are described at

<http://www.wwpdb.org/validation/2017/FAQs#types>.

The following versions of software and data (see [references ⓘ](#)) were used in the production of this report:

MolProbity : 4.02b-467
Mogul : 1.8.5 (274361), CSD as541be (2020)
Xtrriage (Phenix) : 1.13
EDS : 2.36
buster-report : 1.1.7 (2018)
Percentile statistics : 20191225.v01 (using entries in the PDB archive December 25th 2019)
Refmac : 5.8.0158
CCP4 : 7.0.044 (Gargrove)
Ideal geometry (proteins) : Engh & Huber (2001)
Ideal geometry (DNA, RNA) : Parkinson et al. (1996)
Validation Pipeline (wwPDB-VP) : 2.36

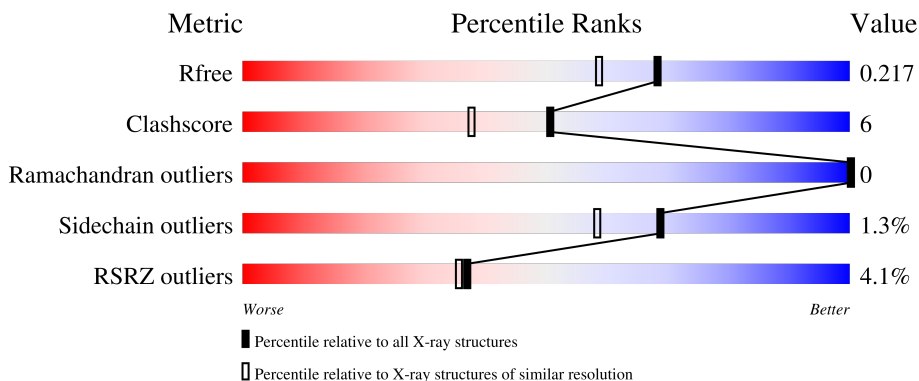
1 Overall quality at a glance

The following experimental techniques were used to determine the structure:

X-RAY DIFFRACTION

The reported resolution of this entry is 1.85 Å.

Percentile scores (ranging between 0-100) for global validation metrics of the entry are shown in the following graphic. The table shows the number of entries on which the scores are based.



Metric	Whole archive (#Entries)	Similar resolution (#Entries, resolution range(Å))
R_{free}	130704	2469 (1.86-1.86)
Clashscore	141614	2625 (1.86-1.86)
Ramachandran outliers	138981	2592 (1.86-1.86)
Sidechain outliers	138945	2592 (1.86-1.86)
RSRZ outliers	127900	2436 (1.86-1.86)

The table below summarises the geometric issues observed across the polymeric chains and their fit to the electron density. The red, orange, yellow and green segments of the lower bar indicate the fraction of residues that contain outliers for ≥ 3 , 2, 1 and 0 types of geometric quality criteria respectively. A grey segment represents the fraction of residues that are not modelled. The numeric value for each fraction is indicated below the corresponding segment, with a dot representing fractions $\leq 5\%$. The upper red bar (where present) indicates the fraction of residues that have poor fit to the electron density. The numeric value is given above the bar.

Mol	Chain	Length	Quality of chain
1	A	171	 7% 82% 16% ..
1	B	171	 % 88% 11% .

2 Entry composition i

There are 5 unique types of molecules in this entry. The entry contains 3106 atoms, of which 0 are hydrogens and 0 are deuteriums.

In the tables below, the ZeroOcc column contains the number of atoms modelled with zero occupancy, the AltConf column contains the number of residues with at least one atom in alternate conformation and the Trace column contains the number of residues modelled with at most 2 atoms.

- Molecule 1 is a protein called peptide deformylase.

Mol	Chain	Residues	Atoms					ZeroOcc	AltConf	Trace
			Total	C	N	O	S			
1	A	169	1360	856	238	259	7	0	0	0
1	B	169	1360	856	238	259	7	0	0	0

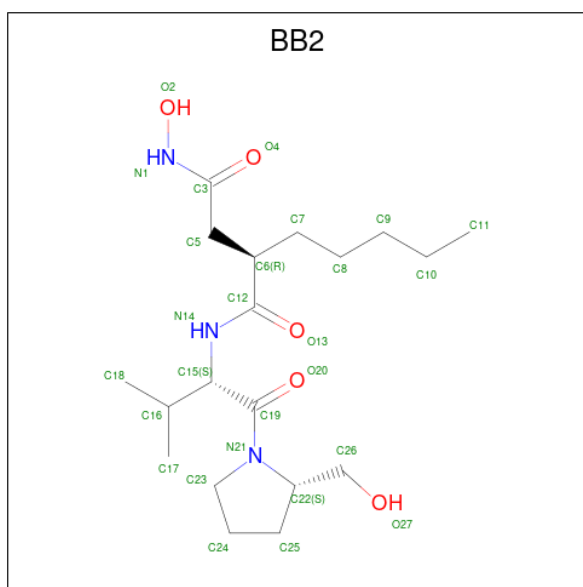
There are 6 discrepancies between the modelled and reference sequences:

Chain	Residue	Modelled	Actual	Comment	Reference
A	169	HIS	-	expression tag	UNP Q9I7A8
A	170	HIS	-	expression tag	UNP Q9I7A8
A	171	HIS	-	expression tag	UNP Q9I7A8
B	169	HIS	-	expression tag	UNP Q9I7A8
B	170	HIS	-	expression tag	UNP Q9I7A8
B	171	HIS	-	expression tag	UNP Q9I7A8

- Molecule 2 is ZINC ION (three-letter code: ZN) (formula: Zn).

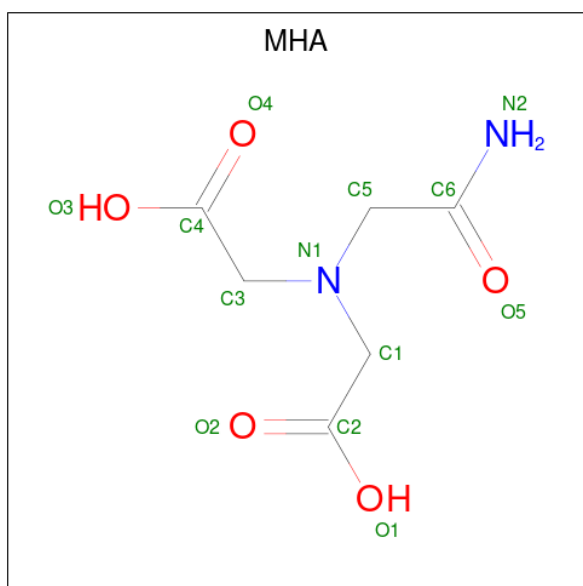
Mol	Chain	Residues	Atoms		ZeroOcc	AltConf
			Total	Zn		
2	A	1	1	1	0	0
2	B	1	1	1	0	0

- Molecule 3 is ACTINONIN (three-letter code: BB2) (formula: C₁₉H₃₅N₃O₅).



Mol	Chain	Residues	Atoms				ZeroOcc	AltConf
			Total	C	N	O		
3	A	1	27	19	3	5	0	0
3	B	1	27	19	3	5	0	0

- Molecule 4 is (CARBAMOYLMETHYL-CARBOXYMETHYL-AMINO)-ACETIC ACID (three-letter code: MHA) (formula: C₆H₁₀N₂O₅).



Mol	Chain	Residues	Atoms				ZeroOcc	AltConf
			Total	C	N	O		
4	A	1	13	6	2	5	0	0

Continued on next page...

Continued from previous page...

Mol	Chain	Residues	Atoms				ZeroOcc	AltConf
			Total	C	N	O		
4	B	1	13	6	2	5	0	0

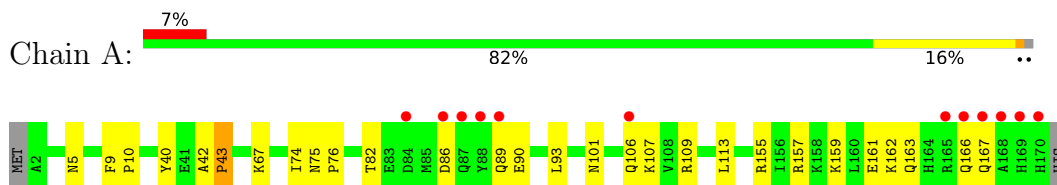
- Molecule 5 is water.

Mol	Chain	Residues	Atoms		ZeroOcc	AltConf
5	A	151	Total	O	0	0
			151	151		
5	B	153	Total	O	0	0
			153	153		

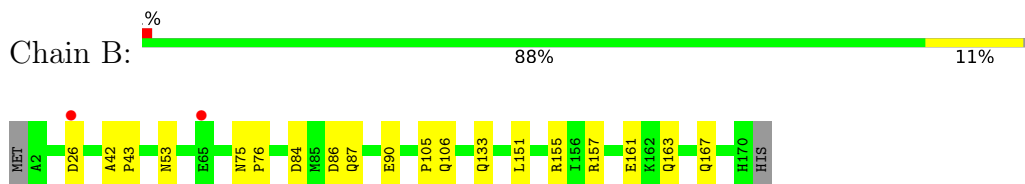
3 Residue-property plots [i](#)

These plots are drawn for all protein, RNA, DNA and oligosaccharide chains in the entry. The first graphic for a chain summarises the proportions of the various outlier classes displayed in the second graphic. The second graphic shows the sequence view annotated by issues in geometry and electron density. Residues are color-coded according to the number of geometric quality criteria for which they contain at least one outlier: green = 0, yellow = 1, orange = 2 and red = 3 or more. A red dot above a residue indicates a poor fit to the electron density ($RSRZ > 2$). Stretches of 2 or more consecutive residues without any outlier are shown as a green connector. Residues present in the sample, but not in the model, are shown in grey.

- Molecule 1: peptide deformylase



- Molecule 1: peptide deformylase



4 Data and refinement statistics

Property	Value	Source
Space group	P 21 21 21	Depositor
Cell constants a, b, c, α , β , γ	68.75Å 74.46Å 77.18Å 90.00° 90.00° 90.00°	Depositor
Resolution (Å)	19.98 – 1.85 28.93 – 1.85	Depositor EDS
% Data completeness (in resolution range)	90.7 (19.98-1.85) 95.1 (28.93-1.85)	Depositor EDS
R_{merge}	(Not available)	Depositor
R_{sym}	(Not available)	Depositor
$\langle I/\sigma(I) \rangle$ ¹	6.36 (at 1.85Å)	Xtrriage
Refinement program	CNS	Depositor
R, R_{free}	0.185 , 0.214 0.187 , 0.217	Depositor DCC
R_{free} test set	5713 reflections (9.63%)	wwPDB-VP
Wilson B-factor (Å ²)	14.6	Xtrriage
Anisotropy	0.483	Xtrriage
Bulk solvent k_{sol} (e/Å ³), B_{sol} (Å ²)	0.41 , 55.2	EDS
L-test for twinning ²	$\langle L \rangle = 0.48$, $\langle L^2 \rangle = 0.31$	Xtrriage
Estimated twinning fraction	0.000 for -h,l,k	Xtrriage
F_o, F_c correlation	0.94	EDS
Total number of atoms	3106	wwPDB-VP
Average B, all atoms (Å ²)	19.0	wwPDB-VP

Xtrriage's analysis on translational NCS is as follows: *The analyses of the Patterson function reveals a significant off-origin peak that is 48.66 % of the origin peak, indicating pseudo-translational symmetry. The chance of finding a peak of this or larger height randomly in a structure without pseudo-translational symmetry is equal to 8.3308e-05. The detected translational NCS is most likely also responsible for the elevated intensity ratio.*

¹Intensities estimated from amplitudes.

²Theoretical values of $\langle |L| \rangle$, $\langle L^2 \rangle$ for acentric reflections are 0.5, 0.333 respectively for untwinned datasets, and 0.375, 0.2 for perfectly twinned datasets.

5 Model quality

5.1 Standard geometry

Bond lengths and bond angles in the following residue types are not validated in this section: BB2, MHA, ZN

The Z score for a bond length (or angle) is the number of standard deviations the observed value is removed from the expected value. A bond length (or angle) with $|Z| > 5$ is considered an outlier worth inspection. RMSZ is the root-mean-square of all Z scores of the bond lengths (or angles).

Mol	Chain	Bond lengths		Bond angles	
		RMSZ	# Z >5	RMSZ	# Z >5
1	A	0.29	0/1384	0.56	0/1871
1	B	0.31	0/1384	0.57	0/1871
All	All	0.30	0/2768	0.57	0/3742

There are no bond length outliers.

There are no bond angle outliers.

There are no chirality outliers.

There are no planarity outliers.

5.2 Too-close contacts

In the following table, the Non-H and H(model) columns list the number of non-hydrogen atoms and hydrogen atoms in the chain respectively. The H(added) column lists the number of hydrogen atoms added and optimized by MolProbity. The Clashes column lists the number of clashes within the asymmetric unit, whereas Symm-Clashes lists symmetry-related clashes.

Mol	Chain	Non-H	H(model)	H(added)	Clashes	Symm-Clashes
1	A	1360	0	1347	20	0
1	B	1360	0	1347	10	0
2	A	1	0	0	0	0
2	B	1	0	0	0	0
3	A	27	0	34	2	0
3	B	27	0	34	1	0
4	A	13	0	8	1	0
4	B	13	0	8	2	0
5	A	151	0	0	4	0
5	B	153	0	0	1	0
All	All	3106	0	2778	32	0

The all-atom clashscore is defined as the number of clashes found per 1000 atoms (including hydrogen atoms). The all-atom clashscore for this structure is 6.

All (32) close contacts within the same asymmetric unit are listed below, sorted by their clash magnitude.

Atom-1	Atom-2	Interatomic distance (Å)	Clash overlap (Å)
1:A:82:THR:HG21	1:A:106:GLN:HE21	1.37	0.86
1:A:90:GLU:HG2	3:A:1301:BB2:H112	1.67	0.77
1:B:163:GLN:O	1:B:167:GLN:HG3	1.88	0.71
1:A:163:GLN:O	1:A:167:GLN:HG3	1.91	0.69
1:B:90:GLU:HG2	3:B:2301:BB2:H112	1.77	0.66
1:A:106:GLN:HG2	5:A:1414:HOH:O	1.97	0.62
4:B:1401:MHA:HC12	4:B:1401:MHA:O4	2.04	0.57
1:A:109:ARG:HH11	4:B:1401:MHA:HN21	1.51	0.57
1:A:106:GLN:NE2	1:A:107:LYS:HB2	2.22	0.54
1:A:162:LYS:O	1:A:166:GLN:HG3	2.07	0.54
1:B:86:ASP:OD2	1:B:106:GLN:HG3	2.08	0.54
1:B:157:ARG:O	1:B:161:GLU:HG3	2.08	0.53
1:A:86:ASP:CG	1:A:106:GLN:HB3	2.29	0.53
1:A:155:ARG:HD2	5:A:1451:HOH:O	2.11	0.50
1:A:9:PHE:CD1	1:A:10:PRO:HA	2.48	0.49
1:A:89:GLN:HE21	1:A:101:ASN:CG	2.16	0.48
4:A:401:MHA:HC12	4:A:401:MHA:O4	2.13	0.48
1:A:159:LYS:HD2	5:A:1450:HOH:O	2.13	0.48
1:A:157:ARG:O	1:A:161:GLU:HG3	2.12	0.48
1:A:93:LEU:HG	3:A:1301:BB2:H51	1.97	0.47
1:A:42:ALA:HB3	1:A:43:PRO:HA	1.97	0.47
1:A:42:ALA:HB3	1:A:43:PRO:CA	2.47	0.45
1:B:87:GLN:HG3	5:B:2415:HOH:O	2.17	0.45
1:B:105:PRO:HD2	1:B:133:GLN:OE1	2.17	0.45
1:A:75:ASN:N	1:A:76:PRO:CD	2.80	0.44
1:B:42:ALA:HB3	1:B:43:PRO:CA	2.48	0.44
1:B:42:ALA:HB3	1:B:43:PRO:HA	2.01	0.43
1:A:5:ASN:HB2	5:A:1398:HOH:O	2.18	0.43
1:B:75:ASN:N	1:B:76:PRO:CD	2.82	0.42
1:B:151:LEU:O	1:B:155:ARG:HG3	2.20	0.42
1:A:40:TYR:CD1	1:A:67:LYS:HG2	2.55	0.41
1:A:74:ILE:HB	1:A:113:LEU:HB2	2.03	0.41

There are no symmetry-related clashes.

5.3 Torsion angles [i](#)

5.3.1 Protein backbone [i](#)

In the following table, the Percentiles column shows the percent Ramachandran outliers of the chain as a percentile score with respect to all X-ray entries followed by that with respect to entries of similar resolution.

The Analysed column shows the number of residues for which the backbone conformation was analysed, and the total number of residues.

Mol	Chain	Analysed	Favoured	Allowed	Outliers	Percentiles	
1	A	167/171 (98%)	164 (98%)	3 (2%)	0	100	100
1	B	167/171 (98%)	165 (99%)	2 (1%)	0	100	100
All	All	334/342 (98%)	329 (98%)	5 (2%)	0	100	100

There are no Ramachandran outliers to report.

5.3.2 Protein sidechains [i](#)

In the following table, the Percentiles column shows the percent sidechain outliers of the chain as a percentile score with respect to all X-ray entries followed by that with respect to entries of similar resolution.

The Analysed column shows the number of residues for which the sidechain conformation was analysed, and the total number of residues.

Mol	Chain	Analysed	Rotameric	Outliers	Percentiles	
1	A	150/154 (97%)	149 (99%)	1 (1%)	84	79
1	B	150/154 (97%)	147 (98%)	3 (2%)	55	40
All	All	300/308 (97%)	296 (99%)	4 (1%)	69	58

All (4) residues with a non-rotameric sidechain are listed below:

Mol	Chain	Res	Type
1	A	43	PRO
1	B	26	ASP
1	B	53	ASN
1	B	84	ASP

Sometimes sidechains can be flipped to improve hydrogen bonding and reduce clashes. All (8) such sidechains are listed below:

Mol	Chain	Res	Type
1	A	30	GLN
1	A	53	ASN
1	A	89	GLN
1	A	106	GLN
1	A	118	ASN
1	B	53	ASN
1	B	89	GLN
1	B	118	ASN

5.3.3 RNA [i](#)

There are no RNA molecules in this entry.

5.4 Non-standard residues in protein, DNA, RNA chains [i](#)

There are no non-standard protein/DNA/RNA residues in this entry.

5.5 Carbohydrates [i](#)

There are no monosaccharides in this entry.

5.6 Ligand geometry [i](#)

Of 6 ligands modelled in this entry, 2 are monoatomic - leaving 4 for Mogul analysis.

In the following table, the Counts columns list the number of bonds (or angles) for which Mogul statistics could be retrieved, the number of bonds (or angles) that are observed in the model and the number of bonds (or angles) that are defined in the Chemical Component Dictionary. The Link column lists molecule types, if any, to which the group is linked. The Z score for a bond length (or angle) is the number of standard deviations the observed value is removed from the expected value. A bond length (or angle) with $|Z| > 2$ is considered an outlier worth inspection. RMSZ is the root-mean-square of all Z scores of the bond lengths (or angles).

Mol	Type	Chain	Res	Link	Bond lengths			Bond angles		
					Counts	RMSZ	# Z > 2	Counts	RMSZ	# Z > 2
3	BB2	B	2301	2	27,27,27	1.31	2 (7%)	34,35,35	1.64	11 (32%)
4	MHA	B	1401	-	12,12,12	1.79	4 (33%)	15,15,15	2.29	3 (20%)
4	MHA	A	401	-	12,12,12	1.78	2 (16%)	15,15,15	2.39	3 (20%)
3	BB2	A	1301	2	27,27,27	1.34	2 (7%)	34,35,35	1.63	10 (29%)

In the following table, the Chirals column lists the number of chiral outliers, the number of chiral

centers analysed, the number of these observed in the model and the number defined in the Chemical Component Dictionary. Similar counts are reported in the Torsion and Rings columns. '-' means no outliers of that kind were identified.

Mol	Type	Chain	Res	Link	Chirals	Torsions	Rings
3	BB2	B	2301	2	-	5/33/43/43	0/1/1/1
4	MHA	B	1401	-	-	8/12/12/12	-
4	MHA	A	401	-	-	8/12/12/12	-
3	BB2	A	1301	2	-	6/33/43/43	0/1/1/1

All (10) bond length outliers are listed below:

Mol	Chain	Res	Type	Atoms	Z	Observed(Å)	Ideal(Å)
3	A	1301	BB2	O2-N1	-4.81	1.27	1.40
3	B	2301	BB2	O2-N1	-4.57	1.28	1.40
3	B	2301	BB2	O27-C26	-4.18	1.24	1.42
3	A	1301	BB2	O27-C26	-4.13	1.25	1.42
4	B	1401	MHA	O2-C2	2.92	1.31	1.22
4	A	401	MHA	O4-C4	2.91	1.31	1.22
4	A	401	MHA	O2-C2	2.87	1.31	1.22
4	B	1401	MHA	O4-C4	2.84	1.31	1.22
4	B	1401	MHA	O1-C2	-2.37	1.22	1.30
4	B	1401	MHA	O3-C4	-2.01	1.24	1.30

All (27) bond angle outliers are listed below:

Mol	Chain	Res	Type	Atoms	Z	Observed(°)	Ideal(°)
4	A	401	MHA	C6-C5-N1	6.21	125.16	114.38
4	B	1401	MHA	C6-C5-N1	5.26	123.50	114.38
4	B	1401	MHA	C4-C3-N1	4.43	128.10	113.63
4	A	401	MHA	C5-N1-C1	4.33	121.32	111.54
4	B	1401	MHA	C5-N1-C1	4.23	121.11	111.54
4	A	401	MHA	C4-C3-N1	3.82	126.09	113.63
3	A	1301	BB2	C5-C6-C12	-3.75	104.34	109.77
3	B	2301	BB2	C5-C6-C12	-3.63	104.51	109.77
3	A	1301	BB2	C25-C22-N21	2.92	107.93	102.81
3	B	2301	BB2	C25-C22-N21	2.90	107.90	102.81
3	B	2301	BB2	C5-C3-N1	2.72	119.26	115.14
3	A	1301	BB2	C6-C12-N14	-2.69	111.56	116.21
3	B	2301	BB2	O4-C3-C5	-2.65	117.62	121.50
3	A	1301	BB2	C18-C16-C15	2.62	118.57	111.16
3	B	2301	BB2	C18-C16-C15	2.59	118.48	111.16
3	B	2301	BB2	O20-C19-C15	-2.47	115.17	119.99
3	A	1301	BB2	C24-C23-N21	2.33	107.33	103.25

Continued on next page...

Continued from previous page...

Mol	Chain	Res	Type	Atoms	Z	Observed(°)	Ideal(°)
3	B	2301	BB2	C24-C23-N21	2.26	107.21	103.25
3	B	2301	BB2	O27-C26-C22	2.24	120.40	111.50
3	A	1301	BB2	O27-C26-C22	2.20	120.25	111.50
3	B	2301	BB2	C17-C16-C15	2.17	117.29	111.16
3	A	1301	BB2	O4-C3-C5	-2.13	118.37	121.50
3	A	1301	BB2	C25-C22-C26	-2.11	106.91	112.95
3	A	1301	BB2	O20-C19-C15	-2.10	115.90	119.99
3	A	1301	BB2	C17-C16-C15	2.07	117.00	111.16
3	B	2301	BB2	C25-C22-C26	-2.03	107.14	112.95
3	B	2301	BB2	C6-C12-N14	-2.01	112.72	116.21

There are no chirality outliers.

All (27) torsion outliers are listed below:

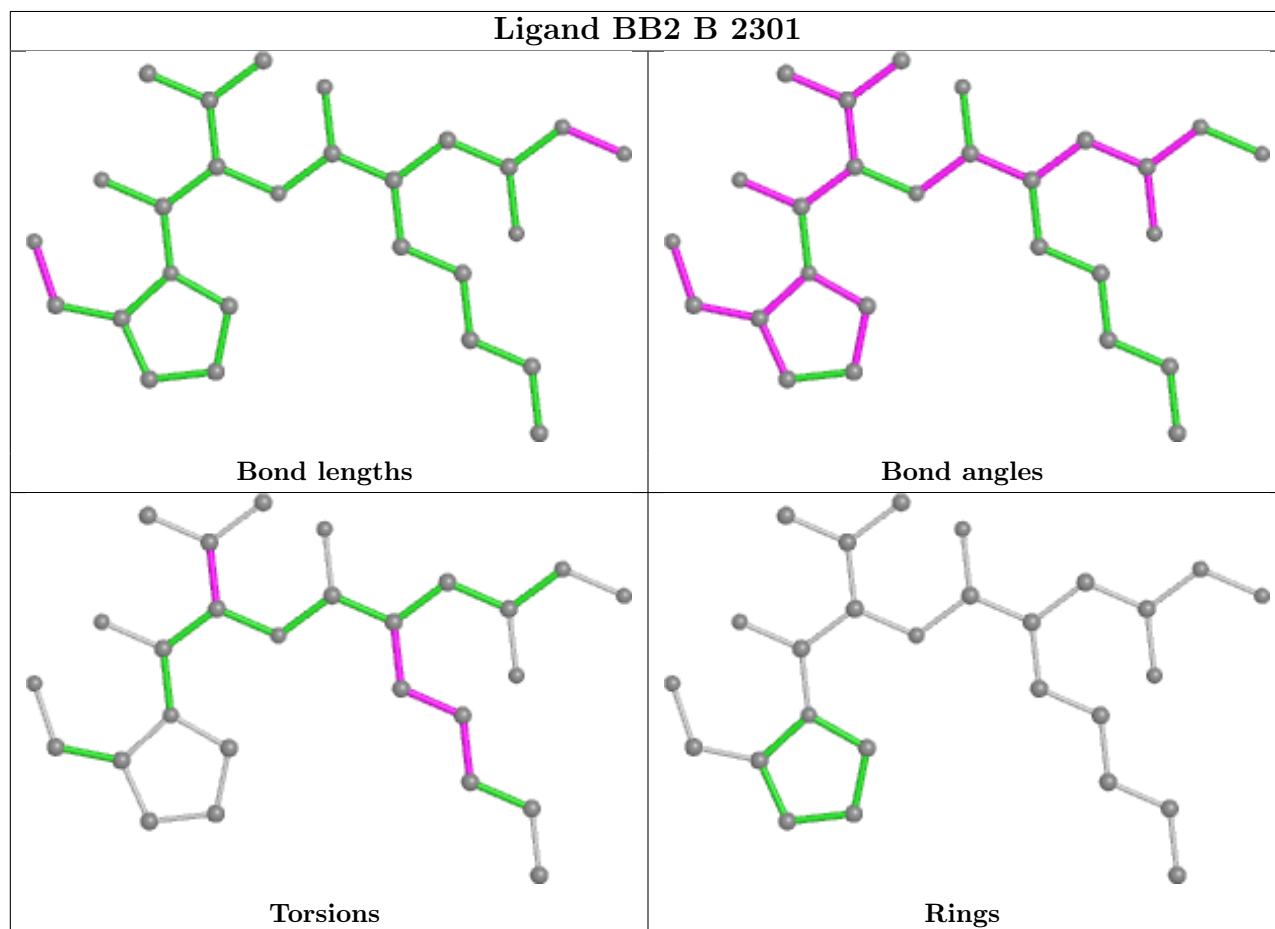
Mol	Chain	Res	Type	Atoms
3	A	1301	BB2	C12-C6-C7-C8
3	B	2301	BB2	C12-C6-C7-C8
4	A	401	MHA	C2-C1-N1-C5
4	A	401	MHA	C4-C3-N1-C1
4	A	401	MHA	C6-C5-N1-C3
4	B	1401	MHA	C2-C1-N1-C5
4	B	1401	MHA	C4-C3-N1-C1
4	B	1401	MHA	C6-C5-N1-C3
4	A	401	MHA	N1-C1-C2-O1
4	A	401	MHA	N1-C1-C2-O2
4	B	1401	MHA	N1-C1-C2-O1
4	B	1401	MHA	N1-C1-C2-O2
3	B	2301	BB2	C6-C7-C8-C9
3	A	1301	BB2	N14-C15-C16-C18
3	A	1301	BB2	C7-C8-C9-C10
3	B	2301	BB2	C7-C8-C9-C10
4	A	401	MHA	N1-C3-C4-O4
3	A	1301	BB2	C5-C6-C7-C8
3	B	2301	BB2	C5-C6-C7-C8
3	B	2301	BB2	N14-C15-C16-C18
3	A	1301	BB2	N21-C22-C26-O27
4	A	401	MHA	C2-C1-N1-C3
4	B	1401	MHA	C4-C3-N1-C5
4	B	1401	MHA	N1-C5-C6-O5
4	B	1401	MHA	N1-C5-C6-N2
4	A	401	MHA	C4-C3-N1-C5
3	A	1301	BB2	C6-C7-C8-C9

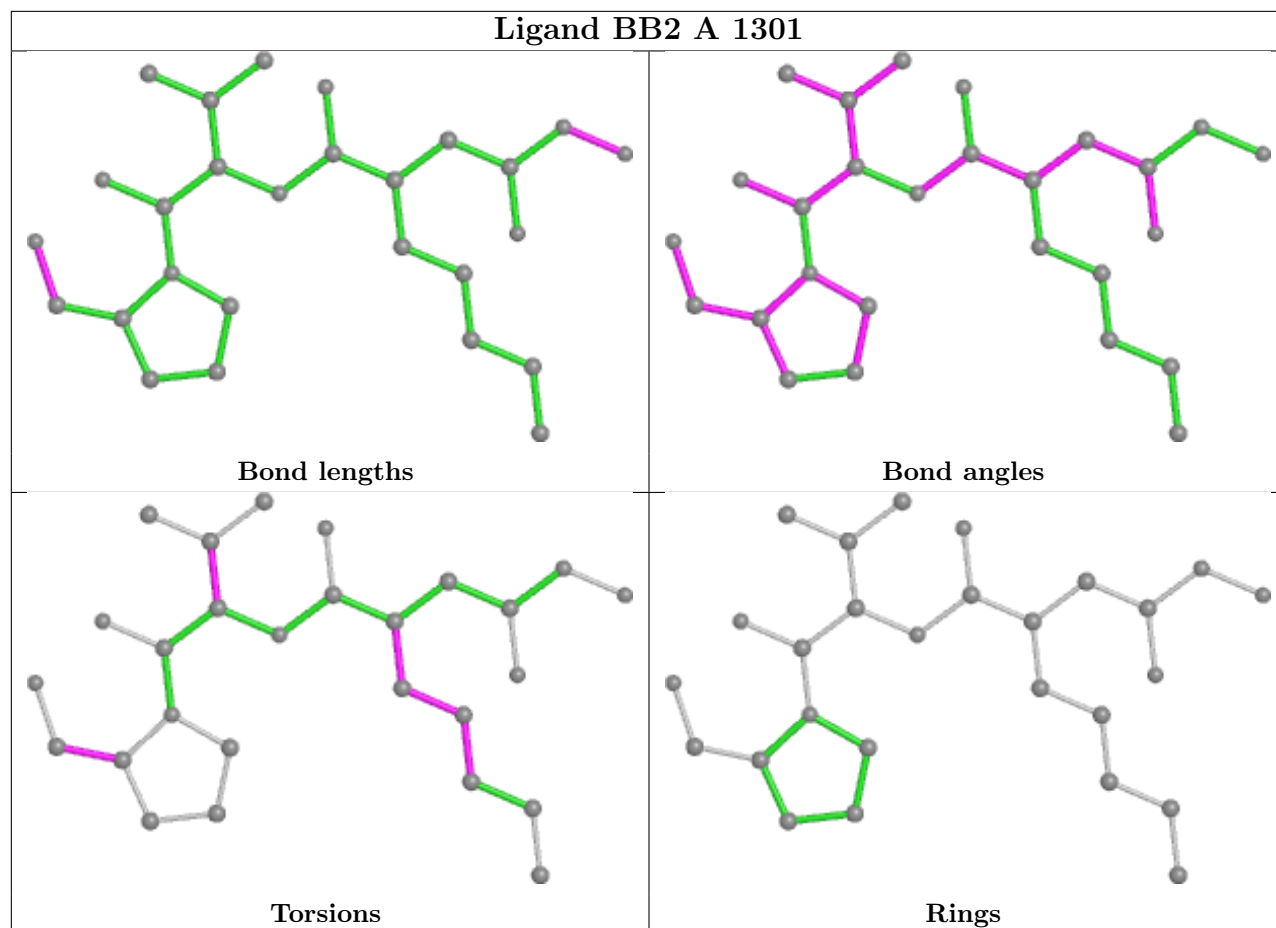
There are no ring outliers.

4 monomers are involved in 6 short contacts:

Mol	Chain	Res	Type	Clashes	Symm-Clashes
3	B	2301	BB2	1	0
4	B	1401	MHA	2	0
4	A	401	MHA	1	0
3	A	1301	BB2	2	0

The following is a two-dimensional graphical depiction of Mogul quality analysis of bond lengths, bond angles, torsion angles, and ring geometry for all instances of the Ligand of Interest. In addition, ligands with molecular weight > 250 and outliers as shown on the validation Tables will also be included. For torsion angles, if less than 5% of the Mogul distribution of torsion angles is within 10 degrees of the torsion angle in question, then that torsion angle is considered an outlier. Any bond that is central to one or more torsion angles identified as an outlier by Mogul will be highlighted in the graph. For rings, the root-mean-square deviation (RMSD) between the ring in question and similar rings identified by Mogul is calculated over all ring torsion angles. If the average RMSD is greater than 60 degrees and the minimal RMSD between the ring in question and any Mogul-identified rings is also greater than 60 degrees, then that ring is considered an outlier. The outliers are highlighted in purple. The color gray indicates Mogul did not find sufficient equivalents in the CSD to analyse the geometry.





5.7 Other polymers [i](#)

There are no such residues in this entry.

5.8 Polymer linkage issues [i](#)

There are no chain breaks in this entry.

6 Fit of model and data [i](#)

6.1 Protein, DNA and RNA chains [i](#)

In the following table, the column labelled ‘#RSRZ > 2’ contains the number (and percentage) of RSRZ outliers, followed by percent RSRZ outliers for the chain as percentile scores relative to all X-ray entries and entries of similar resolution. The OWAB column contains the minimum, median, 95th percentile and maximum values of the occupancy-weighted average B-factor per residue. The column labelled ‘Q < 0.9’ lists the number of (and percentage) of residues with an average occupancy less than 0.9.

Mol	Chain	Analysed	<RSRZ>	#RSRZ>2	OWAB(Å ²)	Q<0.9
1	A	169/171 (98%)	0.26	12 (7%) 16 15	10, 18, 37, 47	0
1	B	169/171 (98%)	-0.09	2 (1%) 79 79	8, 14, 26, 41	0
All	All	338/342 (98%)	0.08	14 (4%) 37 35	8, 15, 34, 47	0

All (14) RSRZ outliers are listed below:

Mol	Chain	Res	Type	RSRZ
1	A	170	HIS	4.7
1	A	88	TYR	4.4
1	A	166	GLN	3.1
1	A	168	ALA	3.1
1	A	167	GLN	2.8
1	A	169	HIS	2.4
1	A	86	ASP	2.3
1	A	87	GLN	2.2
1	A	106	GLN	2.2
1	A	165	ARG	2.2
1	A	84	ASP	2.2
1	B	26	ASP	2.1
1	A	89	GLN	2.1
1	B	65	GLU	2.0

6.2 Non-standard residues in protein, DNA, RNA chains [i](#)

There are no non-standard protein/DNA/RNA residues in this entry.

6.3 Carbohydrates [i](#)

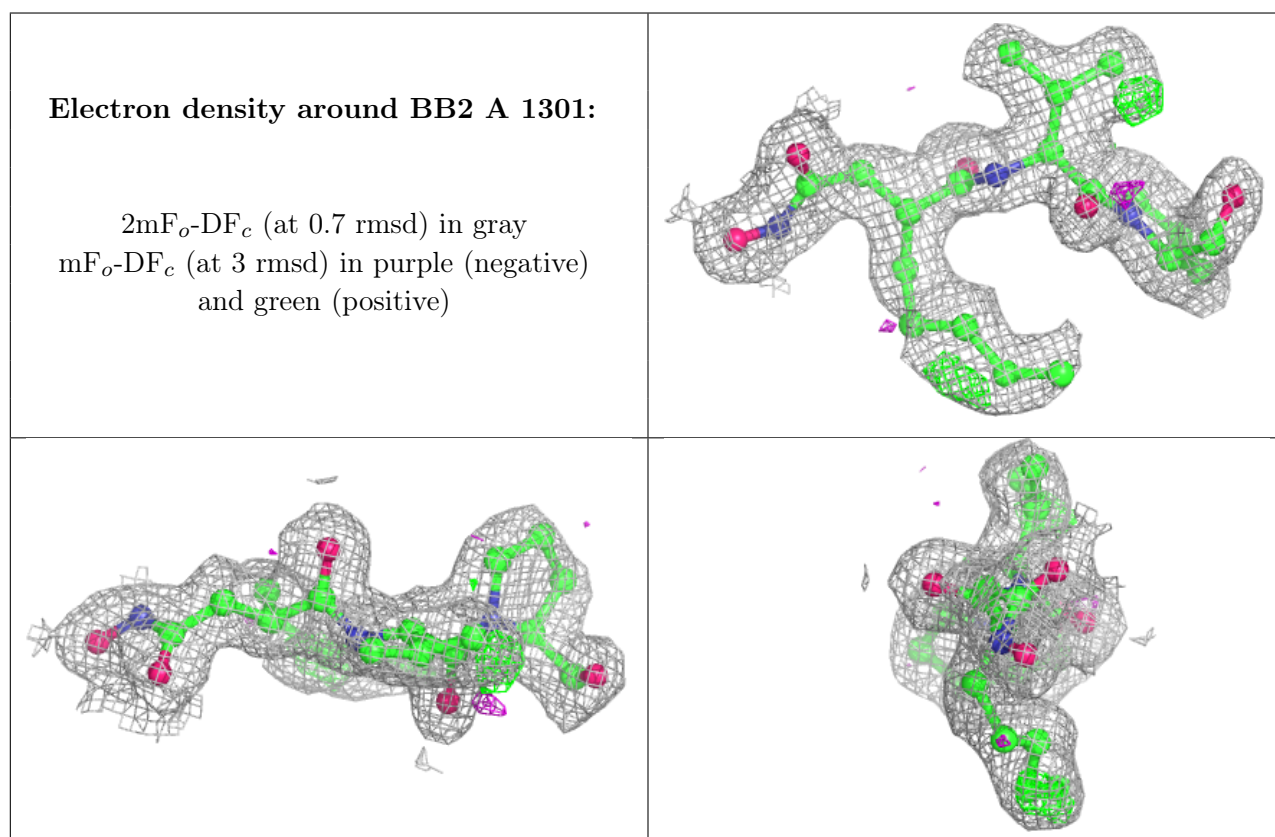
There are no monosaccharides in this entry.

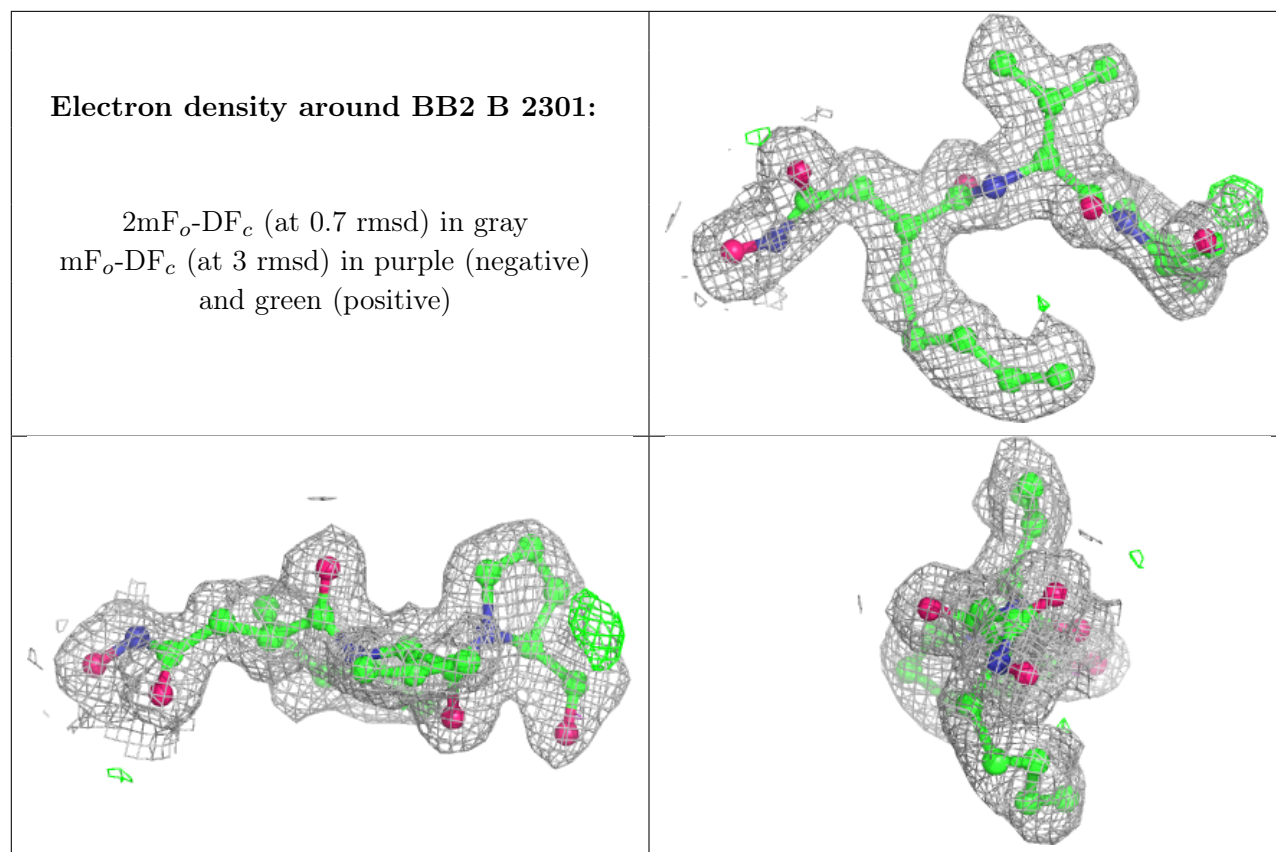
6.4 Ligands [i](#)

In the following table, the Atoms column lists the number of modelled atoms in the group and the number defined in the chemical component dictionary. The B-factors column lists the minimum, median, 95th percentile and maximum values of B factors of atoms in the group. The column labelled 'Q< 0.9' lists the number of atoms with occupancy less than 0.9.

Mol	Type	Chain	Res	Atoms	RSCC	RSR	B-factors(Å ²)	Q<0.9
4	MHA	A	401	13/13	0.77	0.18	25,29,33,35	0
3	BB2	A	1301	27/27	0.86	0.17	17,23,28,30	0
3	BB2	B	2301	27/27	0.91	0.14	17,20,29,32	0
4	MHA	B	1401	13/13	0.94	0.13	11,14,20,20	0
2	ZN	A	201	1/1	1.00	0.03	18,18,18,18	0
2	ZN	B	201	1/1	1.00	0.02	17,17,17,17	0

The following is a graphical depiction of the model fit to experimental electron density of all instances of the Ligand of Interest. In addition, ligands with molecular weight > 250 and outliers as shown on the geometry validation Tables will also be included. Each fit is shown from different orientation to approximate a three-dimensional view.





6.5 Other polymers [i](#)

There are no such residues in this entry.