



Full wwPDB X-ray Structure Validation Report ⓘ

May 19, 2020 – 02:00 pm BST

PDB ID : 1IQ6
Title : (R)-HYDRATASE FROM A. CAVIAE INVOLVED IN PHA BIOSYNTHESIS
Authors : Hisano, T.; Tsuge, T.; Fukui, T.; Iwata, T.; Doi, Y.
Deposited on : 2001-06-18
Resolution : 1.50 Å(reported)

This is a Full wwPDB X-ray Structure Validation Report for a publicly released PDB entry.

We welcome your comments at validation@mail.wwpdb.org

A user guide is available at

<https://www.wwpdb.org/validation/2017/XrayValidationReportHelp>

with specific help available everywhere you see the ⓘ symbol.

The following versions of software and data (see [references ⓘ](#)) were used in the production of this report:

MolProbity : 4.02b-467
Mogul : 1.8.5 (274361), CSD as541be (2020)
Xtrriage (Phenix) : **NOT EXECUTED**
EDS : **NOT EXECUTED**
Percentile statistics : 20191225.v01 (using entries in the PDB archive December 25th 2019)
Ideal geometry (proteins) : Engh & Huber (2001)
Ideal geometry (DNA, RNA) : Parkinson et al. (1996)
Validation Pipeline (wwPDB-VP) : 2.11

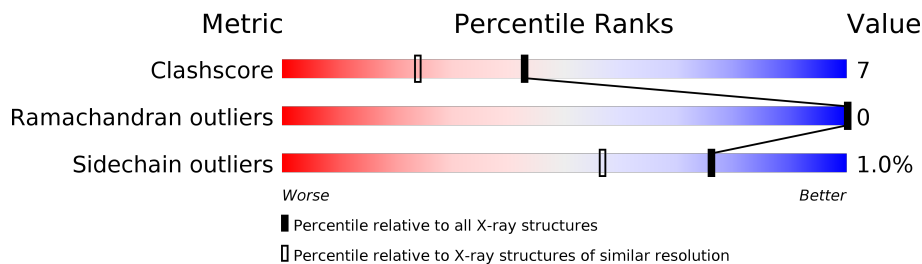
1 Overall quality at a glance

The following experimental techniques were used to determine the structure:

X-RAY DIFFRACTION

The reported resolution of this entry is 1.50 Å.

Percentile scores (ranging between 0-100) for global validation metrics of the entry are shown in the following graphic. The table shows the number of entries on which the scores are based.



Metric	Whole archive (#Entries)	Similar resolution (#Entries, resolution range(Å))
Clashscore	141614	3144 (1.50-1.50)
Ramachandran outliers	138981	3066 (1.50-1.50)
Sidechain outliers	138945	3064 (1.50-1.50)

The table below summarises the geometric issues observed across the polymeric chains and their fit to the electron density. The red, orange, yellow and green segments on the lower bar indicate the fraction of residues that contain outliers for ≥ 3 , 2, 1 and 0 types of geometric quality criteria respectively. A grey segment represents the fraction of residues that are not modelled. The numeric value for each fraction is indicated below the corresponding segment, with a dot representing fractions $\leq 5\%$.

Note EDS was not executed.

Mol	Chain	Length	Quality of chain
1	A	134	
1	B	134	

2 Entry composition [i](#)

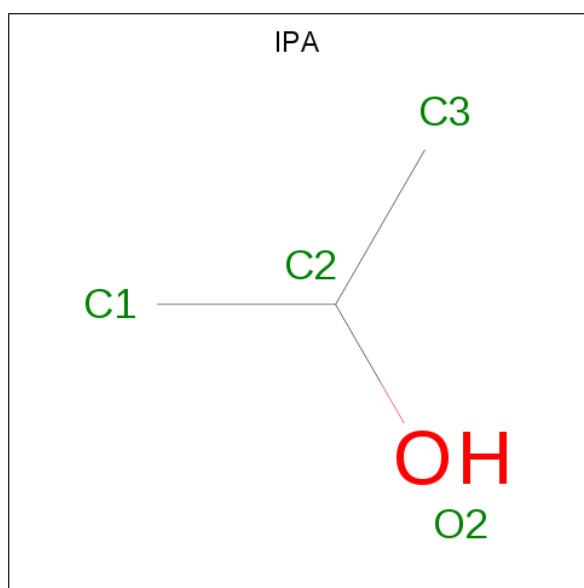
There are 3 unique types of molecules in this entry. The entry contains 2317 atoms, of which 0 are hydrogens and 0 are deuteriums.

In the tables below, the ZeroOcc column contains the number of atoms modelled with zero occupancy, the AltConf column contains the number of residues with at least one atom in alternate conformation and the Trace column contains the number of residues modelled with at most 2 atoms.

- Molecule 1 is a protein called (R)-SPECIFIC ENOYL-COA HYDRATASE.

Mol	Chain	Residues	Atoms					ZeroOcc	AltConf	Trace
			Total	C	N	O	S			
1	A	132	Total 980	C 631	N 164	O 184	S 1	0	0	0
1	B	133	Total 986	C 634	N 165	O 186	S 1	0	0	0

- Molecule 2 is ISOPROPYL ALCOHOL (three-letter code: IPA) (formula: C₃H₈O).



Mol	Chain	Residues	Atoms			ZeroOcc	AltConf
			Total	C	O		
2	A	1	Total 4	C 3	O 1	0	0

- Molecule 3 is water.

Mol	Chain	Residues	Atoms		ZeroOcc	AltConf
			Total	O		
3	A	179	Total 179	O 179	0	0

Continued on next page...

Continued from previous page...


Mol	Chain	Residues	Atoms		ZeroOcc	AltConf
3	B	168	Total 168	O 168	0	0

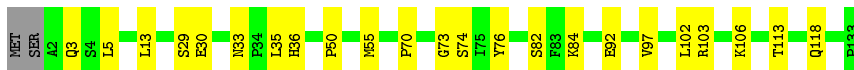
3 Residue-property plots [i](#)

These plots are drawn for all protein, RNA and DNA chains in the entry. The first graphic for a chain summarises the proportions of the various outlier classes displayed in the second graphic. The second graphic shows the sequence view annotated by issues in geometry. Residues are color-coded according to the number of geometric quality criteria for which they contain at least one outlier: green = 0, yellow = 1, orange = 2 and red = 3 or more. Stretches of 2 or more consecutive residues without any outlier are shown as a green connector. Residues present in the sample, but not in the model, are shown in grey.


Note EDS was not executed.

- Molecule 1: (R)-SPECIFIC ENOYL-COA HYDRATASE

Chain A: 



- Molecule 1: (R)-SPECIFIC ENOYL-COA HYDRATASE

Chain B: 



4 Data and refinement statistics

Xtrriage (Phenix) and EDS were not executed - this section is therefore incomplete.

Property	Value	Source
Space group	C 1 2 1	Depositor
Cell constants a, b, c, α , β , γ	110.03Å 57.82Å 46.97Å 90.00° 112.74° 90.00°	Depositor
Resolution (Å)	19.15 – 1.50	Depositor
% Data completeness (in resolution range)	99.4 (19.15-1.50)	Depositor
R_{merge}	0.05	Depositor
R_{sym}	(Not available)	Depositor
Refinement program	CNS 1.0	Depositor
R, R_{free}	0.203 , 0.231	Depositor
Estimated twinning fraction	No twinning to report.	Xtrriage
Total number of atoms	2317	wwPDB-VP
Average B, all atoms (Å ²)	21.0	wwPDB-VP

5 Model quality [i](#)

5.1 Standard geometry [i](#)

Bond lengths and bond angles in the following residue types are not validated in this section: IPA

The Z score for a bond length (or angle) is the number of standard deviations the observed value is removed from the expected value. A bond length (or angle) with $|Z| > 5$ is considered an outlier worth inspection. RMSZ is the root-mean-square of all Z scores of the bond lengths (or angles).

Mol	Chain	Bond lengths		Bond angles	
		RMSZ	# Z >5	RMSZ	# Z >5
1	A	0.31	0/998	0.58	0/1353
1	B	0.32	0/1004	0.61	0/1361
All	All	0.32	0/2002	0.60	0/2714

There are no bond length outliers.

There are no bond angle outliers.

There are no chirality outliers.

There are no planarity outliers.

5.2 Too-close contacts [i](#)

In the following table, the Non-H and H(model) columns list the number of non-hydrogen atoms and hydrogen atoms in the chain respectively. The H(added) column lists the number of hydrogen atoms added and optimized by MolProbity. The Clashes column lists the number of clashes within the asymmetric unit, whereas Symm-Clashes lists symmetry related clashes.

Mol	Chain	Non-H	H(model)	H(added)	Clashes	Symm-Clashes
1	A	980	0	1003	16	0
1	B	986	0	1011	12	0
2	A	4	0	8	0	0
3	A	179	0	0	3	1
3	B	168	0	0	2	0
All	All	2317	0	2022	27	1

The all-atom clashscore is defined as the number of clashes found per 1000 atoms (including hydrogen atoms). The all-atom clashscore for this structure is 7.

All (27) close contacts within the same asymmetric unit are listed below, sorted by their clash magnitude.

Atom-1	Atom-2	Interatomic distance (Å)	Clash overlap (Å)
1:A:103:ARG:HD3	1:A:106:LYS:HB2	1.62	0.79
1:B:33:ASN:OD1	1:B:35:LEU:HD13	1.89	0.72
1:A:3:GLN:HA	3:A:440:HOH:O	1.94	0.67
1:B:35:LEU:HD12	1:B:41:PHE:HE2	1.60	0.66
1:A:73:GLY:HA2	1:B:35:LEU:HD11	1.79	0.63
1:A:70:PRO:HB2	1:A:74:SER:OG	2.00	0.60
1:A:92:GLU:O	1:A:118:GLN:HG3	2.02	0.59
1:A:13:LEU:HD12	1:A:13:LEU:C	2.28	0.54
1:B:103:ARG:NH1	1:B:106:LYS:HE2	2.22	0.54
1:B:35:LEU:HD12	1:B:41:PHE:CE2	2.40	0.54
1:A:3:GLN:NE2	3:A:644:HOH:O	2.41	0.53
1:A:33:ASN:HB3	1:A:36:HIS:CD2	2.46	0.50
1:B:49:ARG:HG3	1:B:88:PHE:CD1	2.47	0.49
1:A:35:LEU:O	1:A:50:PRO:HA	2.12	0.49
1:B:35:LEU:CD1	1:B:41:PHE:HE2	2.25	0.48
1:B:10:LYS:HE2	3:B:414:HOH:O	2.13	0.48
1:A:5:LEU:HD23	1:A:102:LEU:HD21	1.94	0.48
1:B:29:SER:O	1:B:30:GLU:HB2	2.15	0.47
1:A:29:SER:O	1:A:30:GLU:HB2	2.15	0.46
1:B:13:LEU:C	1:B:13:LEU:HD12	2.35	0.46
1:B:106:LYS:HE3	1:B:108:ILE:HD12	1.96	0.46
1:A:3:GLN:HG3	1:A:5:LEU:H	1.81	0.46
1:A:36:HIS:HB2	3:A:486:HOH:O	2.16	0.45
1:A:55:MET:HG3	3:B:326:HOH:O	2.18	0.43
1:B:75:ILE:HB	1:B:131:LYS:HB3	2.00	0.43
1:A:82:SER:HB3	1:A:84:LYS:HE2	2.01	0.42
1:A:97:VAL:HG12	1:A:113:THR:HG22	2.03	0.41

All (1) symmetry-related close contacts are listed below. The label for Atom-2 includes the symmetry operator and encoded unit-cell translations to be applied.

Atom-1	Atom-2	Interatomic distance (Å)	Clash overlap (Å)
3:A:546:HOH:O	3:A:546:HOH:O 2_555]	1.85	0.35

5.3 Torsion angles [i](#)

5.3.1 Protein backbone [i](#)

In the following table, the Percentiles column shows the percent Ramachandran outliers of the chain as a percentile score with respect to all X-ray entries followed by that with respect to entries of similar resolution.

The Analysed column shows the number of residues for which the backbone conformation was analysed, and the total number of residues.

Mol	Chain	Analysed	Favoured	Allowed	Outliers	Percentiles	
1	A	130/134 (97%)	126 (97%)	4 (3%)	0	100	100
1	B	131/134 (98%)	128 (98%)	3 (2%)	0	100	100
All	All	261/268 (97%)	254 (97%)	7 (3%)	0	100	100

There are no Ramachandran outliers to report.

5.3.2 Protein sidechains [i](#)

In the following table, the Percentiles column shows the percent sidechain outliers of the chain as a percentile score with respect to all X-ray entries followed by that with respect to entries of similar resolution.

The Analysed column shows the number of residues for which the sidechain conformation was analysed, and the total number of residues.

Mol	Chain	Analysed	Rotameric	Outliers	Percentiles	
1	A	101/103 (98%)	100 (99%)	1 (1%)	76	57
1	B	102/103 (99%)	101 (99%)	1 (1%)	76	57
All	All	203/206 (98%)	201 (99%)	2 (1%)	76	57

All (2) residues with a non-rotameric sidechain are listed below:

Mol	Chain	Res	Type
1	A	76	TYR
1	B	76	TYR

Some sidechains can be flipped to improve hydrogen bonding and reduce clashes. All (2) such sidechains are listed below:

Mol	Chain	Res	Type
1	A	3	GLN
1	B	3	GLN

5.3.3 RNA [i](#)

There are no RNA molecules in this entry.

5.4 Non-standard residues in protein, DNA, RNA chains [i](#)

There are no non-standard protein/DNA/RNA residues in this entry.

5.5 Carbohydrates [i](#)

There are no carbohydrates in this entry.

5.6 Ligand geometry [i](#)

1 ligand is modelled in this entry.

In the following table, the Counts columns list the number of bonds (or angles) for which Mogul statistics could be retrieved, the number of bonds (or angles) that are observed in the model and the number of bonds (or angles) that are defined in the Chemical Component Dictionary. The Link column lists molecule types, if any, to which the group is linked. The Z score for a bond length (or angle) is the number of standard deviations the observed value is removed from the expected value. A bond length (or angle) with $|Z| > 2$ is considered an outlier worth inspection. RMSZ is the root-mean-square of all Z scores of the bond lengths (or angles).

Mol	Type	Chain	Res	Link	Bond lengths			Bond angles		
					Counts	RMSZ	$\# Z > 2$	Counts	RMSZ	$\# Z > 2$
2	IPA	A	201	-	3,3,3	0.44	0	3,3,3	0.42	0

There are no bond length outliers.

There are no bond angle outliers.

There are no chirality outliers.

There are no torsion outliers.

There are no ring outliers.

No monomer is involved in short contacts.

5.7 Other polymers [i](#)

There are no such residues in this entry.

5.8 Polymer linkage issues [i](#)

There are no chain breaks in this entry.

6 Fit of model and data

6.1 Protein, DNA and RNA chains

EDS was not executed - this section is therefore empty.

6.2 Non-standard residues in protein, DNA, RNA chains

EDS was not executed - this section is therefore empty.

6.3 Carbohydrates

EDS was not executed - this section is therefore empty.

6.4 Ligands

EDS was not executed - this section is therefore empty.

6.5 Other polymers

EDS was not executed - this section is therefore empty.