



Full wwPDB X-ray Structure Validation Report ⓘ

Aug 20, 2023 – 01:34 PM EDT

PDB ID : 2IL2
Title : Crystal Structure of Human Renin Complexed with Inhibitor
Authors : Mochalkin, I.
Deposited on : 2006-10-02
Resolution : 2.24 Å(reported)

This is a Full wwPDB X-ray Structure Validation Report for a publicly released PDB entry.

We welcome your comments at validation@mail.wwpdb.org

A user guide is available at

<https://www.wwpdb.org/validation/2017/XrayValidationReportHelp>

with specific help available everywhere you see the ⓘ symbol.

The types of validation reports are described at

<http://www.wwpdb.org/validation/2017/FAQs#types>.

The following versions of software and data (see [references ⓘ](#)) were used in the production of this report:

MolProbity : 4.02b-467
Mogul : 1.8.5 (274361), CSD as541be (2020)
Xtriage (Phenix) : 1.13
EDS : 2.35
buster-report : 1.1.7 (2018)
Percentile statistics : 20191225.v01 (using entries in the PDB archive December 25th 2019)
Refmac : 5.8.0158
CCP4 : 7.0.044 (Gargrove)
Ideal geometry (proteins) : Engh & Huber (2001)
Ideal geometry (DNA, RNA) : Parkinson et al. (1996)
Validation Pipeline (wwPDB-VP) : 2.35

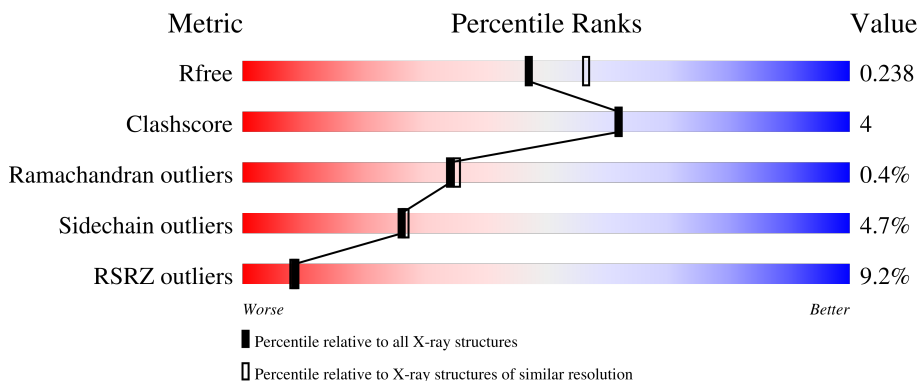
1 Overall quality at a glance

The following experimental techniques were used to determine the structure:

X-RAY DIFFRACTION

The reported resolution of this entry is 2.24 Å.

Percentile scores (ranging between 0-100) for global validation metrics of the entry are shown in the following graphic. The table shows the number of entries on which the scores are based.



Metric	Whole archive (#Entries)	Similar resolution (#Entries, resolution range(Å))
R_{free}	130704	2391 (2.26-2.22)
Clashscore	141614	2539 (2.26-2.22)
Ramachandran outliers	138981	2489 (2.26-2.22)
Sidechain outliers	138945	2490 (2.26-2.22)
RSRZ outliers	127900	2353 (2.26-2.22)

The table below summarises the geometric issues observed across the polymeric chains and their fit to the electron density. The red, orange, yellow and green segments of the lower bar indicate the fraction of residues that contain outliers for ≥ 3 , 2, 1 and 0 types of geometric quality criteria respectively. A grey segment represents the fraction of residues that are not modelled. The numeric value for each fraction is indicated below the corresponding segment, with a dot representing fractions $\leq 5\%$. The upper red bar (where present) indicates the fraction of residues that have poor fit to the electron density. The numeric value is given above the bar.

Mol	Chain	Length	Quality of chain
1	A	340	
1	B	340	

2 Entry composition i

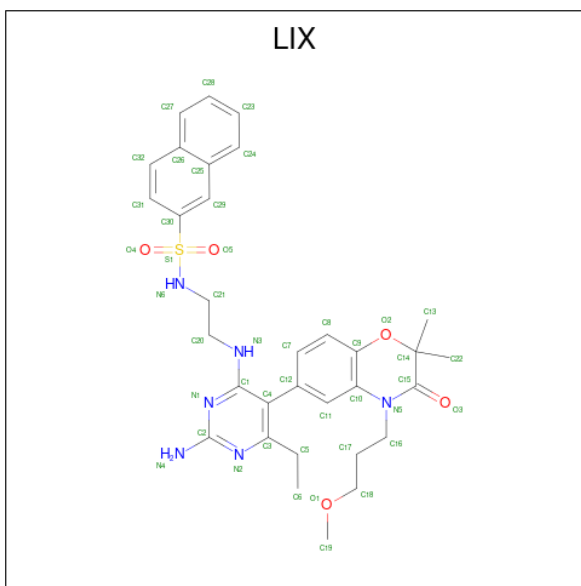
There are 4 unique types of molecules in this entry. The entry contains 5561 atoms, of which 0 are hydrogens and 0 are deuteriums.

In the tables below, the ZeroOcc column contains the number of atoms modelled with zero occupancy, the AltConf column contains the number of residues with at least one atom in alternate conformation and the Trace column contains the number of residues modelled with at most 2 atoms.

- Molecule 1 is a protein called Renin.

Mol	Chain	Residues	Atoms					ZeroOcc	AltConf	Trace
			Total	C	N	O	S			
1	A	338	Total 2606	C 1662	N 422	O 508	S 14	0	0	0
1	B	338	Total 2612	C 1666	N 422	O 510	S 14	6	1	0

- Molecule 2 is N-[2-({2-AMINO-6-ETHYL-5-[4-(3-METHOXYPROPYL)-2,2-DIMETHYL-3-OXO-3,4-DIHYDRO-2H-1,4-BENZOXAZIN-6-YL]PYRIMIDIN-4-YL}AMINO)ETHYL]N APHTHALENE-2-SULFONAMIDE (three-letter code: LIX) (formula: C₃₂H₃₈N₆O₅S).



Mol	Chain	Residues	Atoms					ZeroOcc	AltConf
			Total	C	N	O	S		
2	A	1	Total 44	C 32	N 6	O 5	S 1	0	0
2	B	1	Total 44	C 32	N 6	O 5	S 1	0	0

- Molecule 3 is CITRIC ACID (three-letter code: CIT) (formula: C₆H₈O₇).



Mol	Chain	Residues	Atoms	ZeroOcc	AltConf
3	A	1	Total C O 13 6 7	0	0

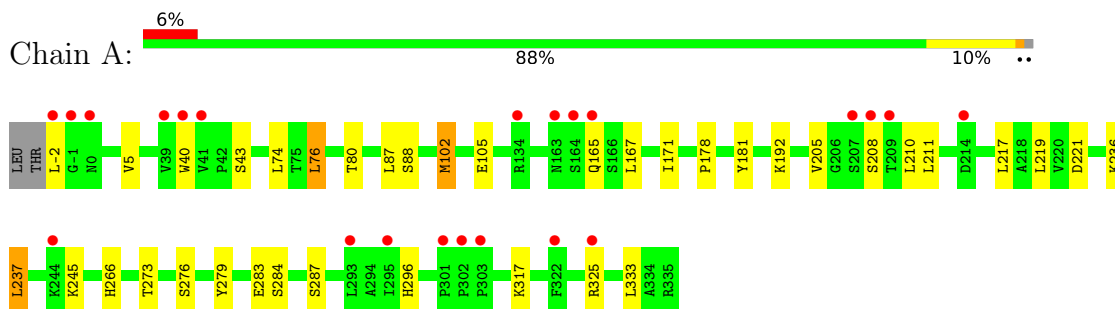
- Molecule 4 is water.

Mol	Chain	Residues	Atoms	ZeroOcc	AltConf
4	A	140	Total O 140 140	0	0
4	B	102	Total O 102 102	0	0

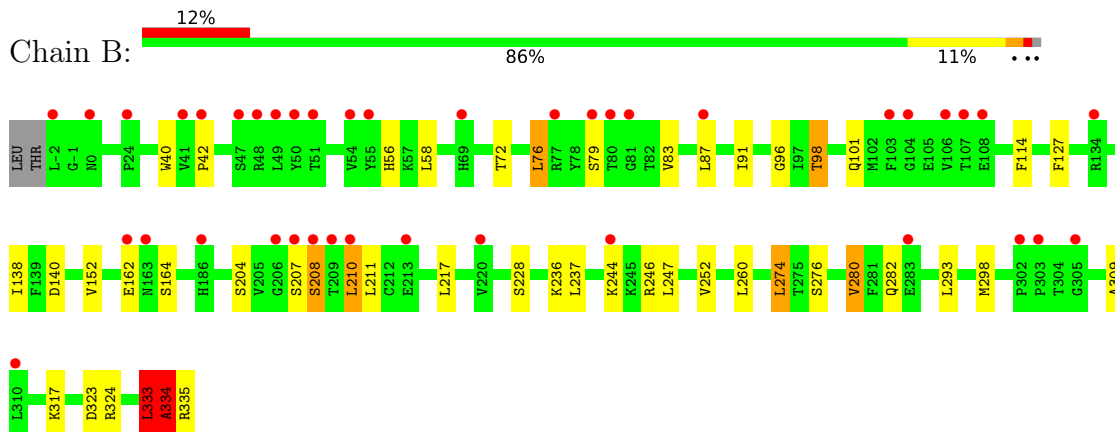
3 Residue-property plots [i](#)

These plots are drawn for all protein, RNA, DNA and oligosaccharide chains in the entry. The first graphic for a chain summarises the proportions of the various outlier classes displayed in the second graphic. The second graphic shows the sequence view annotated by issues in geometry and electron density. Residues are color-coded according to the number of geometric quality criteria for which they contain at least one outlier: green = 0, yellow = 1, orange = 2 and red = 3 or more. A red dot above a residue indicates a poor fit to the electron density ($RSRZ > 2$). Stretches of 2 or more consecutive residues without any outlier are shown as a green connector. Residues present in the sample, but not in the model, are shown in grey.

- Molecule 1: Renin



- Molecule 1: Renin



4 Data and refinement statistics

Property	Value	Source
Space group	P 21 3	Depositor
Cell constants a, b, c, α , β , γ	141.53Å 141.53Å 141.53Å 90.00° 90.00° 90.00°	Depositor
Resolution (Å)	20.00 – 2.24 19.82 – 2.24	Depositor EDS
% Data completeness (in resolution range)	99.7 (20.00-2.24) 99.7 (19.82-2.24)	Depositor EDS
R_{merge}	0.07	Depositor
R_{sym}	(Not available)	Depositor
$\langle I/\sigma(I) \rangle$ ¹	6.12 (at 2.23Å)	Xtrriage
Refinement program	REFMAC	Depositor
R, R_{free}	0.206 , 0.242 0.204 , 0.238	Depositor DCC
R_{free} test set	2281 reflections (5.05%)	wwPDB-VP
Wilson B-factor (Å ²)	45.1	Xtrriage
Anisotropy	0.000	Xtrriage
Bulk solvent k_{sol} (e/Å ³), B_{sol} (Å ²)	0.32 , 39.4	EDS
L-test for twinning ²	$\langle L \rangle = 0.51$, $\langle L^2 \rangle = 0.35$	Xtrriage
Estimated twinning fraction	0.019 for l,-k,h	Xtrriage
F_o, F_c correlation	0.95	EDS
Total number of atoms	5561	wwPDB-VP
Average B, all atoms (Å ²)	47.0	wwPDB-VP

Xtrriage's analysis on translational NCS is as follows: *The largest off-origin peak in the Patterson function is 2.41% of the height of the origin peak. No significant pseudotranslation is detected.*

¹Intensities estimated from amplitudes.

²Theoretical values of $\langle |L| \rangle$, $\langle L^2 \rangle$ for acentric reflections are 0.5, 0.333 respectively for untwinned datasets, and 0.375, 0.2 for perfectly twinned datasets.

5 Model quality [i](#)

5.1 Standard geometry [i](#)

Bond lengths and bond angles in the following residue types are not validated in this section: LIX, CIT

The Z score for a bond length (or angle) is the number of standard deviations the observed value is removed from the expected value. A bond length (or angle) with $|Z| > 5$ is considered an outlier worth inspection. RMSZ is the root-mean-square of all Z scores of the bond lengths (or angles).

Mol	Chain	Bond lengths		Bond angles	
		RMSZ	# Z >5	RMSZ	# Z >5
1	A	0.59	0/2666	0.68	0/3615
1	B	0.56	0/2675	0.69	1/3627 (0.0%)
All	All	0.58	0/5341	0.69	1/7242 (0.0%)

Chiral center outliers are detected by calculating the chiral volume of a chiral center and verifying if the center is modelled as a planar moiety or with the opposite hand. A planarity outlier is detected by checking planarity of atoms in a peptide group, atoms in a mainchain group or atoms of a sidechain that are expected to be planar.

Mol	Chain	#Chirality outliers	#Planarity outliers
1	B	0	3

There are no bond length outliers.

All (1) bond angle outliers are listed below:

Mol	Chain	Res	Type	Atoms	Z	Observed($^{\circ}$)	Ideal($^{\circ}$)
1	B	210	LEU	CA-CB-CG	5.49	127.92	115.30

There are no chirality outliers.

All (3) planarity outliers are listed below:

Mol	Chain	Res	Type	Group
1	B	333	LEU	Peptide
1	B	334	ALA	Peptide
1	B	96	GLY	Peptide

5.2 Too-close contacts [i](#)

In the following table, the Non-H and H(model) columns list the number of non-hydrogen atoms and hydrogen atoms in the chain respectively. The H(added) column lists the number of hydrogen atoms added and optimized by MolProbity. The Clashes column lists the number of clashes within the asymmetric unit, whereas Symm-Clashes lists symmetry-related clashes.

Mol	Chain	Non-H	H(model)	H(added)	Clashes	Symm-Clashes
1	A	2606	0	2538	20	0
1	B	2612	0	2544	27	0
2	A	44	0	38	1	0
2	B	44	0	38	1	0
3	A	13	0	5	0	0
4	A	140	0	0	0	0
4	B	102	0	0	2	0
All	All	5561	0	5163	46	0

The all-atom clashscore is defined as the number of clashes found per 1000 atoms (including hydrogen atoms). The all-atom clashscore for this structure is 4.

All (46) close contacts within the same asymmetric unit are listed below, sorted by their clash magnitude.

Atom-1	Atom-2	Interatomic distance (Å)	Clash overlap (Å)
1:B:334:ALA:HB1	1:B:335:ARG:HA	1.40	1.04
1:A:208:SER:OG	1:A:210:LEU:HD23	1.74	0.85
1:A:88:SER:O	1:A:102:MET:HE3	1.79	0.80
1:B:334:ALA:HB1	1:B:335:ARG:CA	2.11	0.79
1:B:334:ALA:CB	1:B:335:ARG:CA	2.70	0.70
1:A:205:VAL:HG21	1:A:237:LEU:HD23	1.77	0.66
1:B:334:ALA:HA	4:B:419:HOH:O	1.96	0.65
1:A:80:THR:HG21	2:A:401:LIX:H29	1.80	0.63
1:B:91:ILE:HG23	1:B:98:THR:HG23	1.80	0.63
1:B:91:ILE:CG2	1:B:98:THR:HG23	2.29	0.62
1:B:276:SER:O	1:B:280:VAL:HG13	2.02	0.60
1:B:334:ALA:HB3	1:B:335:ARG:HB3	1.84	0.59
1:B:252:VAL:HG11	1:B:260:LEU:HD11	1.87	0.55
1:A:87:LEU:HB3	1:A:102:MET:HE2	1.88	0.55
1:B:210:LEU:HD12	1:B:211:LEU:HG	1.88	0.54
1:A:273:THR:O	1:A:317:LYS:NZ	2.40	0.54
1:B:83:VAL:HG13	1:B:114:PHE:CE1	2.44	0.53
1:B:56:HIS:HE1	1:B:114:PHE:O	1.92	0.52
1:A:210:LEU:HD12	1:A:211:LEU:HG	1.91	0.52
1:A:219:LEU:HD23	1:A:221:ASP:HB2	1.90	0.52

Continued on next page...

Continued from previous page...

Atom-1	Atom-2	Interatomic distance (Å)	Clash overlap (Å)
1:A:283:GLU:O	1:B:162:GLU:HB3	2.10	0.51
1:B:280:VAL:HB	1:B:293:LEU:HD22	1.93	0.50
1:A:-2:LEU:HD13	1:A:325:ARG:NH1	2.27	0.49
1:A:87:LEU:HB3	1:A:102:MET:CE	2.43	0.49
1:B:333:LEU:HD22	4:B:419:HOH:O	2.12	0.49
1:B:274:LEU:HD22	1:B:317:LYS:HG2	1.95	0.49
1:B:280:VAL:HG22	1:B:282:GLN:HG2	1.95	0.48
1:B:40:TRP:CD1	1:B:76:LEU:HD23	2.48	0.48
1:A:211:LEU:HD21	1:A:236:LYS:HG2	1.96	0.48
1:B:207:SER:O	1:B:208:SER:HB3	2.14	0.48
1:A:178:PRO:HA	1:A:181:TYR:CE1	2.50	0.47
1:B:72:THR:HB	1:B:87:LEU:HD12	1.96	0.47
1:B:211:LEU:HD21	1:B:236:LYS:HG2	1.97	0.46
1:B:152:VAL:HG12	1:B:323:ASP:HA	1.96	0.46
1:A:43:SER:HB2	1:A:105:GLU:HB3	1.98	0.46
1:B:298:MET:HE2	2:B:402:LIX:C31	2.46	0.45
1:A:88:SER:C	1:A:102:MET:HE3	2.37	0.45
1:B:42:PRO:HB2	1:B:58:LEU:HD23	2.00	0.43
1:A:88:SER:O	1:A:102:MET:CE	2.59	0.42
1:A:276:SER:HA	1:A:279:TYR:CE2	2.54	0.42
1:A:208:SER:HG	1:A:210:LEU:HD23	1.79	0.41
1:B:228:SER:OG	1:B:309:ALA:HB3	2.19	0.41
1:B:127:PHE:CE2	1:B:324:ARG:HD3	2.56	0.41
1:B:101:GLN:OE1	1:B:138:ILE:HA	2.20	0.41
1:A:5:VAL:HB	1:A:171:ILE:HG23	2.02	0.41
1:A:40:TRP:CD1	1:A:76:LEU:HD23	2.56	0.41

There are no symmetry-related clashes.

5.3 Torsion angles [\(i\)](#)

5.3.1 Protein backbone [\(i\)](#)

In the following table, the Percentiles column shows the percent Ramachandran outliers of the chain as a percentile score with respect to all X-ray entries followed by that with respect to entries of similar resolution.

The Analysed column shows the number of residues for which the backbone conformation was analysed, and the total number of residues.

Mol	Chain	Analysed	Favoured	Allowed	Outliers	Percentiles	
1	A	336/340 (99%)	329 (98%)	7 (2%)	0	100	100
1	B	337/340 (99%)	325 (96%)	9 (3%)	3 (1%)	17	13
All	All	673/680 (99%)	654 (97%)	16 (2%)	3 (0%)	34	35

All (3) Ramachandran outliers are listed below:

Mol	Chain	Res	Type
1	B	208	SER
1	B	246	ARG
1	B	334	ALA

5.3.2 Protein sidechains [i](#)

In the following table, the Percentiles column shows the percent sidechain outliers of the chain as a percentile score with respect to all X-ray entries followed by that with respect to entries of similar resolution.

The Analysed column shows the number of residues for which the sidechain conformation was analysed, and the total number of residues.

Mol	Chain	Analysed	Rotameric	Outliers	Percentiles	
1	A	288/290 (99%)	274 (95%)	14 (5%)	25	25
1	B	289/290 (100%)	276 (96%)	13 (4%)	27	29
All	All	577/580 (100%)	550 (95%)	27 (5%)	26	27

All (27) residues with a non-rotameric sidechain are listed below:

Mol	Chain	Res	Type
1	A	74	LEU
1	A	76	LEU
1	A	102	MET
1	A	165	GLN
1	A	167	LEU
1	A	192	LYS
1	A	217	LEU
1	A	237	LEU
1	A	245	LYS
1	A	266	HIS
1	A	284	SER
1	A	287	SER
1	A	296	HIS

Continued on next page...

Continued from previous page...

Mol	Chain	Res	Type
1	A	333	LEU
1	B	76	LEU
1	B	79	SER
1	B	98	THR
1	B	140	ASP
1	B	164	SER
1	B	204	SER
1	B	217	LEU
1	B	237	LEU
1	B	244	LYS
1	B	247	LEU
1	B	274	LEU
1	B	280	VAL
1	B	333	LEU

Sometimes sidechains can be flipped to improve hydrogen bonding and reduce clashes. All (8) such sidechains are listed below:

Mol	Chain	Res	Type
1	A	141	ASN
1	A	189	ASN
1	A	199	GLN
1	B	70	ASN
1	B	141	ASN
1	B	170	GLN
1	B	189	ASN
1	B	296	HIS

5.3.3 RNA [i](#)

There are no RNA molecules in this entry.

5.4 Non-standard residues in protein, DNA, RNA chains [i](#)

There are no non-standard protein/DNA/RNA residues in this entry.

5.5 Carbohydrates [i](#)

There are no monosaccharides in this entry.

5.6 Ligand geometry

3 ligands are modelled in this entry.

In the following table, the Counts columns list the number of bonds (or angles) for which Mogul statistics could be retrieved, the number of bonds (or angles) that are observed in the model and the number of bonds (or angles) that are defined in the Chemical Component Dictionary. The Link column lists molecule types, if any, to which the group is linked. The Z score for a bond length (or angle) is the number of standard deviations the observed value is removed from the expected value. A bond length (or angle) with $|Z| > 2$ is considered an outlier worth inspection. RMSZ is the root-mean-square of all Z scores of the bond lengths (or angles).

Mol	Type	Chain	Res	Link	Bond lengths			Bond angles		
					Counts	RMSZ	# Z > 2	Counts	RMSZ	# Z > 2
2	LIX	B	402	-	46,48,48	2.01	6 (13%)	61,70,70	2.41	17 (27%)
2	LIX	A	401	-	46,48,48	2.01	5 (10%)	61,70,70	2.41	13 (21%)
3	CIT	A	501	-	12,12,12	1.01	0	17,17,17	1.68	4 (23%)

In the following table, the Chirals column lists the number of chiral outliers, the number of chiral centers analysed, the number of these observed in the model and the number defined in the Chemical Component Dictionary. Similar counts are reported in the Torsion and Rings columns. '-' means no outliers of that kind were identified.

Mol	Type	Chain	Res	Link	Chirals	Torsions	Rings
2	LIX	B	402	-	-	3/21/44/44	0/5/5/5
2	LIX	A	401	-	-	3/21/44/44	0/5/5/5
3	CIT	A	501	-	-	5/16/16/16	-

All (11) bond length outliers are listed below:

Mol	Chain	Res	Type	Atoms	Z	Observed(Å)	Ideal(Å)
2	B	402	LIX	C30-S1	-10.27	1.60	1.76
2	A	401	LIX	C30-S1	-9.87	1.61	1.76
2	A	401	LIX	C1-C4	3.96	1.50	1.44
2	A	401	LIX	C3-C4	3.81	1.48	1.43
2	B	402	LIX	C3-C4	3.46	1.48	1.43
2	B	402	LIX	C1-C4	3.30	1.49	1.44
2	B	402	LIX	C25-C26	3.24	1.49	1.42
2	A	401	LIX	C3-N2	3.17	1.36	1.32
2	A	401	LIX	C25-C26	3.12	1.49	1.42
2	B	402	LIX	C3-N2	2.67	1.35	1.32
2	B	402	LIX	C29-C30	2.53	1.41	1.36

All (34) bond angle outliers are listed below:

Mol	Chain	Res	Type	Atoms	Z	Observed(°)	Ideal(°)
2	A	401	LIX	O4-S1-O5	-8.35	109.29	119.55
2	B	402	LIX	C2-N2-C3	8.24	123.11	116.24
2	B	402	LIX	C4-C3-N2	-7.23	117.19	122.44
2	B	402	LIX	O4-S1-O5	-6.54	111.50	119.55
2	B	402	LIX	C10-N5-C15	-6.40	117.56	123.04
2	A	401	LIX	C30-S1-N6	6.34	116.35	107.55
2	A	401	LIX	C2-N2-C3	6.12	121.34	116.24
2	A	401	LIX	C4-C3-N2	-5.48	118.46	122.44
2	B	402	LIX	C3-C4-C1	-5.06	117.10	123.17
2	A	401	LIX	O5-S1-N6	4.99	114.84	107.04
2	A	401	LIX	C3-C4-C1	-4.92	117.27	123.17
2	A	401	LIX	C10-N5-C15	-4.55	119.14	123.04
3	A	501	CIT	O6-C6-C3	4.47	120.81	113.05
2	B	402	LIX	O5-S1-C30	4.43	113.42	107.97
2	A	401	LIX	C2-N1-C1	4.15	123.85	114.54
2	A	401	LIX	C4-C1-N1	-3.40	116.55	122.18
2	A	401	LIX	O5-S1-C30	-3.39	103.78	107.97
2	B	402	LIX	C29-C30-S1	3.21	122.73	120.03
2	B	402	LIX	C2-N1-C1	2.96	121.17	114.54
2	A	401	LIX	C16-N5-C15	2.92	121.42	117.37
2	B	402	LIX	C31-C30-S1	-2.89	116.62	119.77
2	A	401	LIX	C11-C10-C9	-2.53	116.11	119.87
2	B	402	LIX	C11-C12-C7	2.46	121.21	118.15
2	B	402	LIX	O2-C9-C8	2.36	120.21	116.61
2	A	401	LIX	O4-S1-N6	-2.27	103.50	107.04
2	B	402	LIX	C9-C10-N5	2.15	121.40	118.52
3	A	501	CIT	O2-C1-C2	2.14	121.23	114.35
3	A	501	CIT	O7-C3-C6	2.10	111.82	108.86
2	B	402	LIX	C6-C5-C3	-2.06	109.84	114.88
2	B	402	LIX	C20-N3-C1	-2.05	119.43	122.89
2	B	402	LIX	C8-C7-C12	-2.04	117.66	120.82
3	A	501	CIT	O4-C5-O3	-2.03	118.23	123.30
2	B	402	LIX	C4-C1-N1	-2.02	118.83	122.18
2	B	402	LIX	C30-S1-N6	2.01	110.35	107.55

There are no chirality outliers.

All (11) torsion outliers are listed below:

Mol	Chain	Res	Type	Atoms
3	A	501	CIT	C2-C3-C6-O5
3	A	501	CIT	C2-C3-C6-O6
3	A	501	CIT	O7-C3-C6-O5
3	A	501	CIT	O7-C3-C6-O6

Continued on next page...

Continued from previous page...

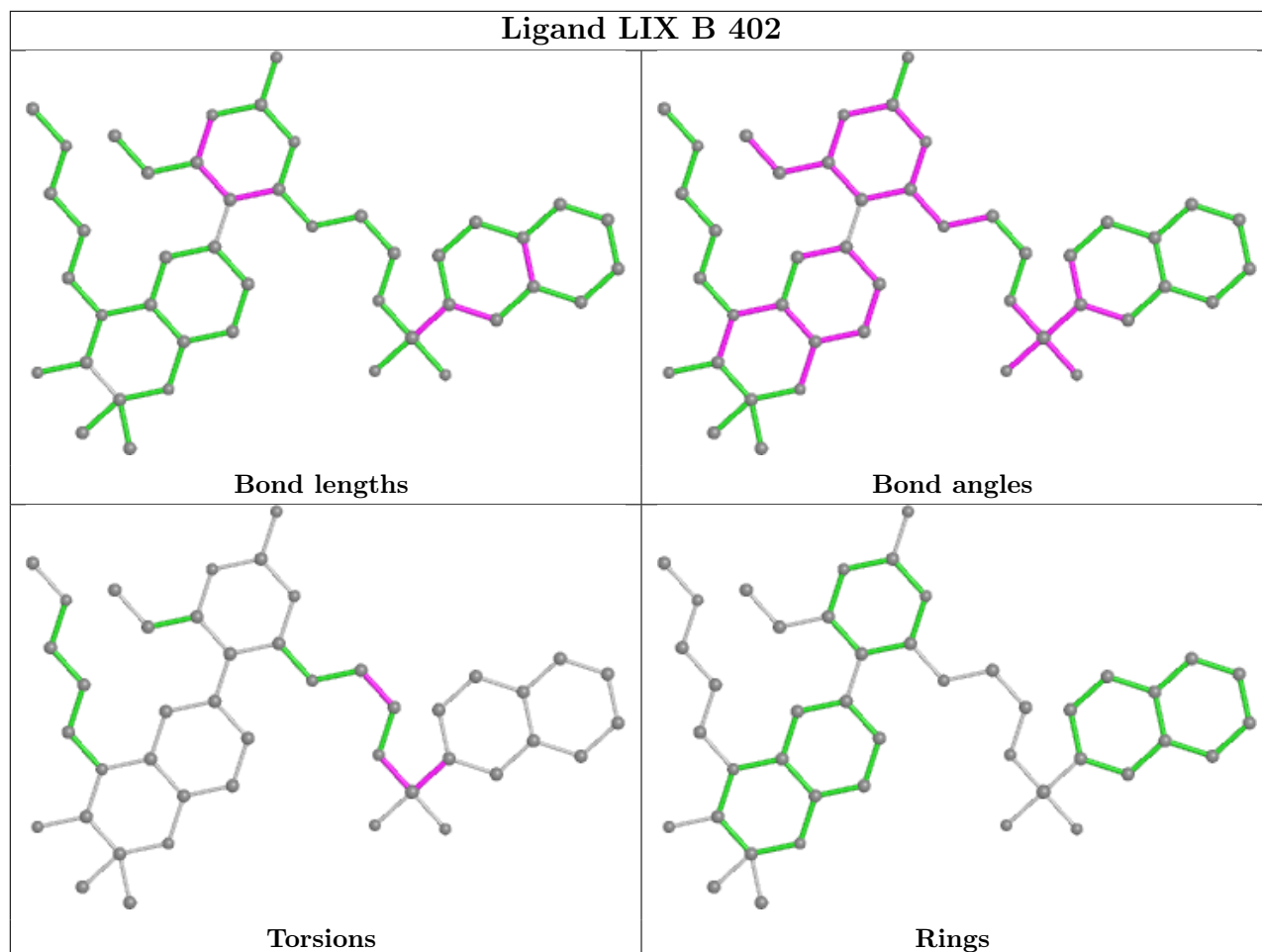
Mol	Chain	Res	Type	Atoms
2	B	402	LIX	N3-C20-C21-N6
2	B	402	LIX	C21-N6-S1-O5
2	A	401	LIX	C21-N6-S1-O4
2	A	401	LIX	C31-C30-S1-O5
3	A	501	CIT	C4-C3-C6-O6
2	A	401	LIX	C29-C30-S1-O5
2	B	402	LIX	C29-C30-S1-O4

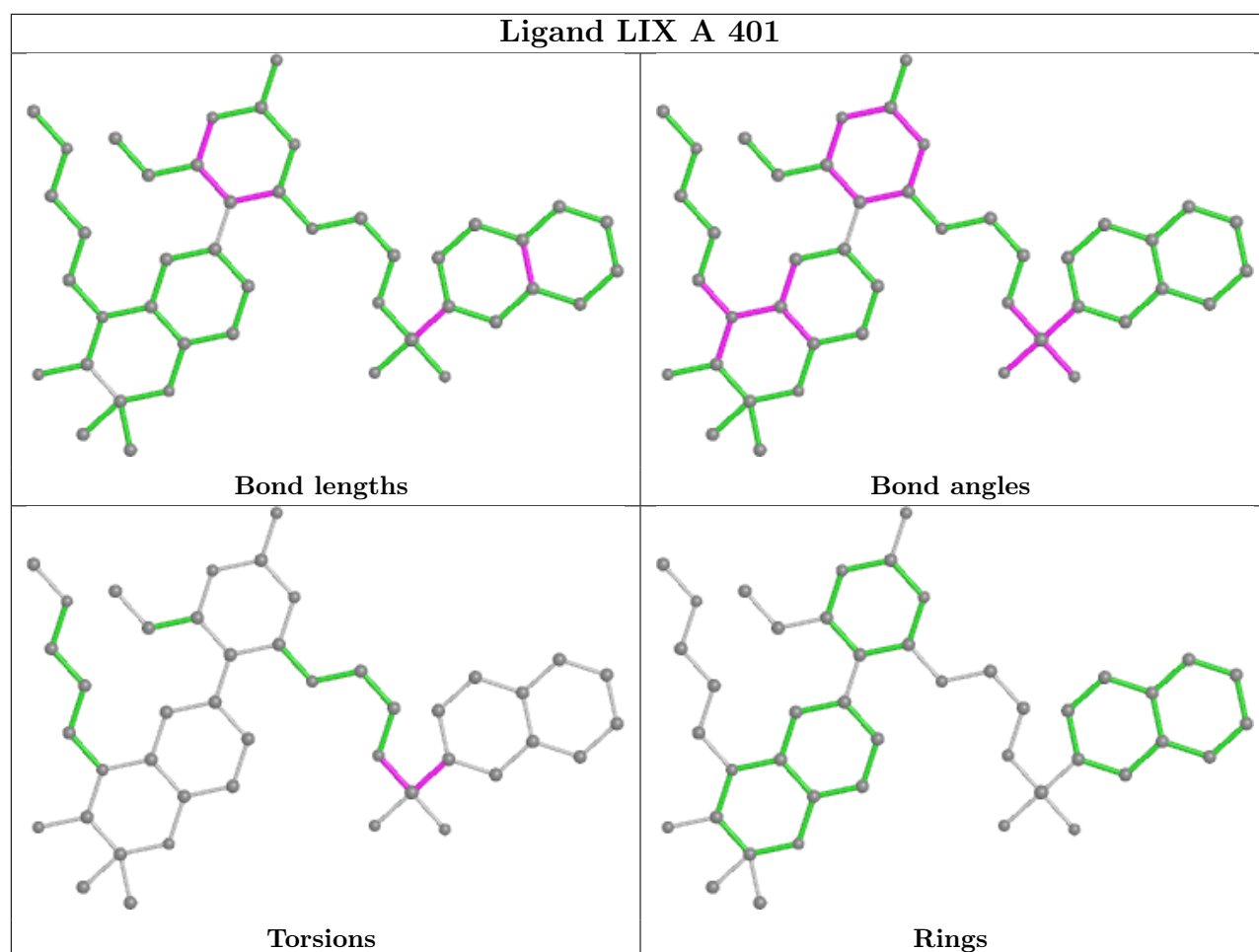
There are no ring outliers.

2 monomers are involved in 2 short contacts:

Mol	Chain	Res	Type	Clashes	Symm-Clashes
2	B	402	LIX	1	0
2	A	401	LIX	1	0

The following is a two-dimensional graphical depiction of Mogul quality analysis of bond lengths, bond angles, torsion angles, and ring geometry for all instances of the Ligand of Interest. In addition, ligands with molecular weight > 250 and outliers as shown on the validation Tables will also be included. For torsion angles, if less than 5% of the Mogul distribution of torsion angles is within 10 degrees of the torsion angle in question, then that torsion angle is considered an outlier. Any bond that is central to one or more torsion angles identified as an outlier by Mogul will be highlighted in the graph. For rings, the root-mean-square deviation (RMSD) between the ring in question and similar rings identified by Mogul is calculated over all ring torsion angles. If the average RMSD is greater than 60 degrees and the minimal RMSD between the ring in question and any Mogul-identified rings is also greater than 60 degrees, then that ring is considered an outlier. The outliers are highlighted in purple. The color gray indicates Mogul did not find sufficient equivalents in the CSD to analyse the geometry.





5.7 Other polymers [i](#)

There are no such residues in this entry.

5.8 Polymer linkage issues [i](#)

There are no chain breaks in this entry.

6 Fit of model and data

6.1 Protein, DNA and RNA chains

In the following table, the column labelled ‘#RSRZ > 2’ contains the number (and percentage) of RSRZ outliers, followed by percent RSRZ outliers for the chain as percentile scores relative to all X-ray entries and entries of similar resolution. The OWAB column contains the minimum, median, 95th percentile and maximum values of the occupancy-weighted average B-factor per residue. The column labelled ‘Q < 0.9’ lists the number of (and percentage) of residues with an average occupancy less than 0.9.

Mol	Chain	Analysed	<RSRZ>	#RSRZ>2	OWAB(Å ²)	Q<0.9
1	A	338/340 (99%)	0.16	22 (6%) 18 18	36, 45, 60, 69	2 (0%)
1	B	338/340 (99%)	0.38	40 (11%) 4 3	40, 49, 62, 67	6 (1%)
All	All	676/680 (99%)	0.27	62 (9%) 9 8	36, 47, 61, 69	8 (1%)

All (62) RSRZ outliers are listed below:

Mol	Chain	Res	Type	RSRZ
1	A	208	SER	6.8
1	B	55	TYR	6.1
1	A	209	THR	6.0
1	A	207	SER	6.0
1	B	-2	LEU	5.8
1	A	164	SER	5.0
1	B	208	SER	4.8
1	A	165	GLN	4.7
1	B	207	SER	4.6
1	B	209	THR	4.5
1	A	-2	LEU	4.4
1	B	134	ARG	4.2
1	B	80	THR	4.2
1	B	49	LEU	3.9
1	B	41	VAL	3.8
1	B	104	GLY	3.7
1	B	48	ARG	3.6
1	B	0	ASN	3.5
1	B	47	SER	3.3
1	B	54	VAL	3.3
1	B	106	VAL	3.2
1	B	50	TYR	3.0
1	A	0	ASN	3.0
1	A	301	PRO	2.9

Continued on next page...

Continued from previous page...

Mol	Chain	Res	Type	RSRZ
1	B	87	LEU	2.9
1	A	302	PRO	2.8
1	A	303	PRO	2.8
1	B	210	LEU	2.8
1	B	81	GLY	2.7
1	B	305	GLY	2.7
1	A	163	ASN	2.7
1	A	-1	GLY	2.6
1	B	220	VAL	2.6
1	A	214	ASP	2.6
1	A	325	ARG	2.6
1	A	40	TRP	2.6
1	B	244	LYS	2.6
1	B	42	PRO	2.5
1	A	322	PHE	2.5
1	B	303	PRO	2.5
1	A	41	VAL	2.5
1	B	24	PRO	2.4
1	B	302	PRO	2.4
1	B	103	PHE	2.4
1	B	69	HIS	2.4
1	B	186	HIS	2.3
1	A	134	ARG	2.3
1	B	213	GLU	2.3
1	B	77	ARG	2.2
1	B	79	SER	2.2
1	B	283	GLU	2.2
1	A	293	LEU	2.2
1	B	162	GLU	2.1
1	A	39	VAL	2.1
1	A	295	ILE	2.1
1	B	51	THR	2.1
1	A	244	LYS	2.1
1	B	310	LEU	2.1
1	B	107	THR	2.1
1	B	108	GLU	2.0
1	B	163	ASN	2.0
1	B	206	GLY	2.0

6.2 Non-standard residues in protein, DNA, RNA chains

There are no non-standard protein/DNA/RNA residues in this entry.

6.3 Carbohydrates [i](#)

There are no monosaccharides in this entry.

6.4 Ligands [i](#)

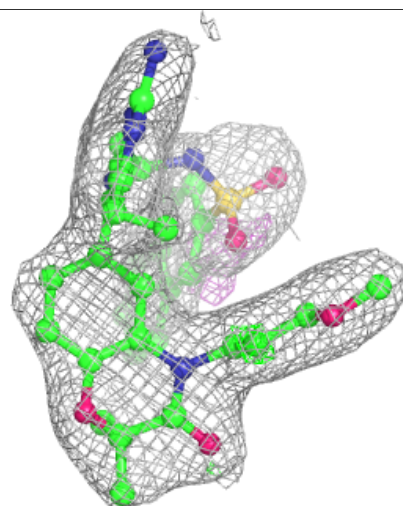
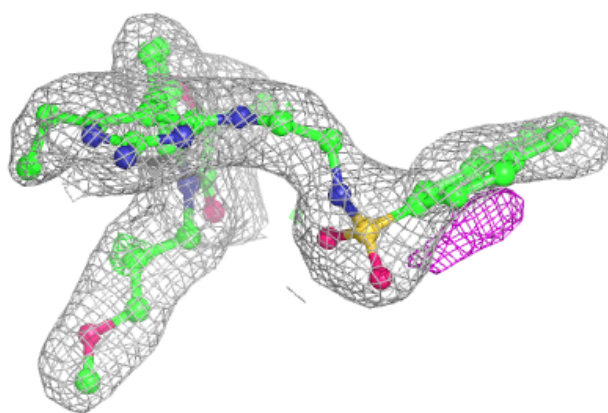
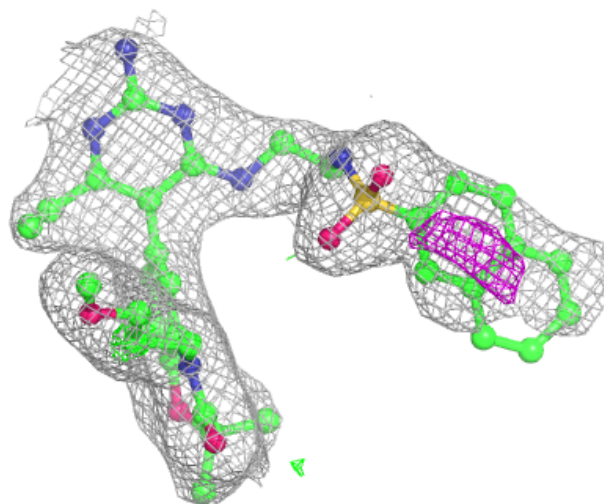
In the following table, the Atoms column lists the number of modelled atoms in the group and the number defined in the chemical component dictionary. The B-factors column lists the minimum, median, 95th percentile and maximum values of B factors of atoms in the group. The column labelled 'Q< 0.9' lists the number of atoms with occupancy less than 0.9.

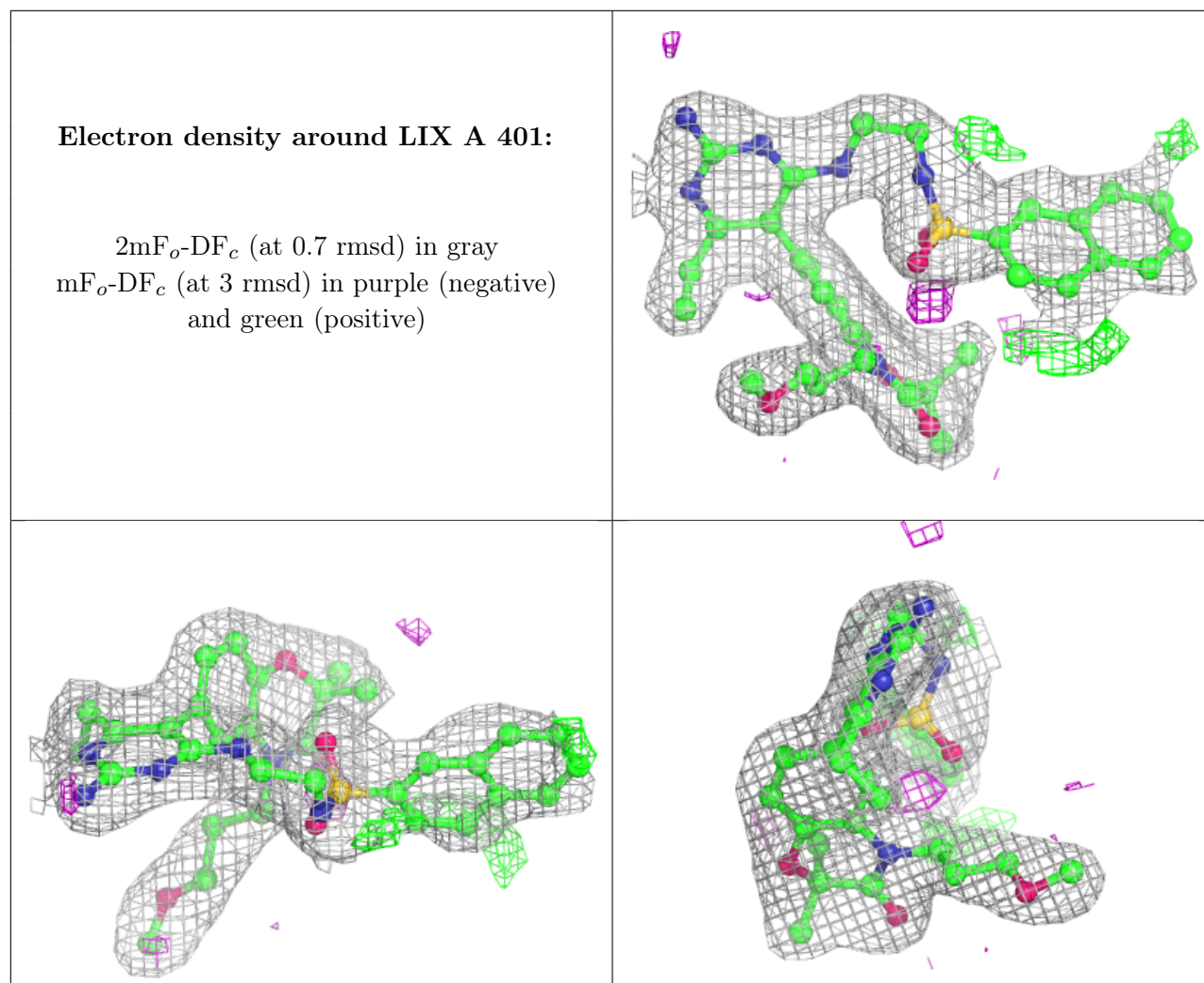
Mol	Type	Chain	Res	Atoms	RSCC	RSR	B-factors(Å ²)	Q<0.9
3	CIT	A	501	13/13	0.67	0.22	79,80,81,81	0
2	LIX	B	402	44/44	0.88	0.16	26,32,51,51	0
2	LIX	A	401	44/44	0.95	0.12	26,30,42,42	0

The following is a graphical depiction of the model fit to experimental electron density of all instances of the Ligand of Interest. In addition, ligands with molecular weight > 250 and outliers as shown on the geometry validation Tables will also be included. Each fit is shown from different orientation to approximate a three-dimensional view.

Electron density around LIX B 402:

$2mF_o-DF_c$ (at 0.7 rmsd) in gray
 mF_o-DF_c (at 3 rmsd) in purple (negative)
and green (positive)





6.5 Other polymers [i](#)

There are no such residues in this entry.