



# Full wwPDB X-ray Structure Validation Report ⓘ

May 23, 2020 – 05:08 pm BST

PDB ID : 4IHF  
Title : Chasing Acyl Carrier Protein Through a Catalytic Cycle of Lipid A Production  
Authors : Masoudi, A.; Raetz, C.R.H.; Pemble, C.W.  
Deposited on : 2012-12-18  
Resolution : 2.10 Å(reported)

This is a Full wwPDB X-ray Structure Validation Report for a publicly released PDB entry.

We welcome your comments at [validation@mail.wwpdb.org](mailto:validation@mail.wwpdb.org)

A user guide is available at

<https://www.wwpdb.org/validation/2017/XrayValidationReportHelp>

with specific help available everywhere you see the ⓘ symbol.

---

The following versions of software and data (see [references ⓘ](#)) were used in the production of this report:

MolProbity : 4.02b-467  
Mogul : 1.8.5 (274361), CSD as541be (2020)  
Xtriage (Phenix) : 1.13  
EDS : 2.11  
buster-report : 1.1.7 (2018)  
Percentile statistics : 20191225.v01 (using entries in the PDB archive December 25th 2019)  
Refmac : 5.8.0158  
CCP4 : 7.0.044 (Gargrove)  
Ideal geometry (proteins) : Engh & Huber (2001)  
Ideal geometry (DNA, RNA) : Parkinson et al. (1996)  
Validation Pipeline (wwPDB-VP) : 2.11

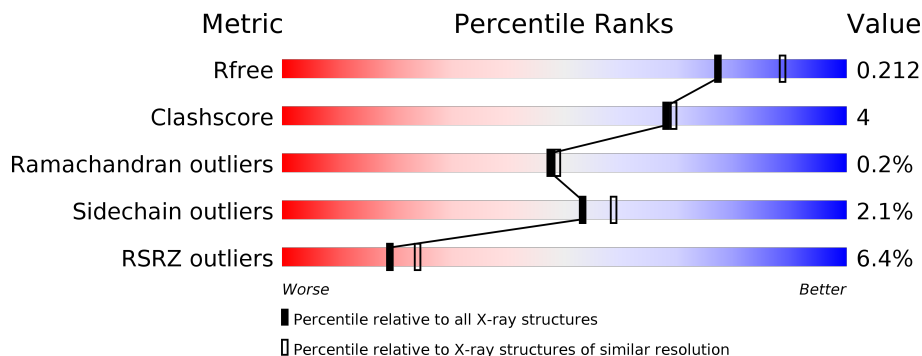
# 1 Overall quality at a glance

The following experimental techniques were used to determine the structure:

*X-RAY DIFFRACTION*

The reported resolution of this entry is 2.10 Å.

Percentile scores (ranging between 0-100) for global validation metrics of the entry are shown in the following graphic. The table shows the number of entries on which the scores are based.



Metric	Whole archive (#Entries)	Similar resolution (#Entries, resolution range(Å))
$R_{free}$	130704	5197 (2.10-2.10)
Clashscore	141614	5710 (2.10-2.10)
Ramachandran outliers	138981	5647 (2.10-2.10)
Sidechain outliers	138945	5648 (2.10-2.10)
RSRZ outliers	127900	5083 (2.10-2.10)

The table below summarises the geometric issues observed across the polymeric chains and their fit to the electron density. The red, orange, yellow and green segments on the lower bar indicate the fraction of residues that contain outliers for  $\geq 3$ , 2, 1 and 0 types of geometric quality criteria respectively. A grey segment represents the fraction of residues that are not modelled. The numeric value for each fraction is indicated below the corresponding segment, with a dot representing fractions  $\leq 5\%$ . The upper red bar (where present) indicates the fraction of residues that have poor fit to the electron density. The numeric value is given above the bar.

Mol	Chain	Length	Quality of chain
1	A	348	 91% 5% . .
1	B	348	 92% . .
1	C	348	 89% 5% . .
1	D	348	 92% 5% .
1	E	348	 89% 6% . .
1	F	348	 91% 5% .

*Continued on next page...*

*Continued from previous page...*

Mol	Chain	Length	Quality of chain
2	G	80	
2	H	80	
2	I	80	
2	J	80	
2	K	80	
2	L	80	

The following table lists non-polymeric compounds, carbohydrate monomers and non-standard residues in protein, DNA, RNA chains that are outliers for geometric or electron-density-fit criteria:

Mol	Type	Chain	Res	Chirality	Geometry	Clashes	Electron density
3	CL	A	401	-	-	X	-
3	CL	D	401	-	-	X	-

## 2 Entry composition i

There are 5 unique types of molecules in this entry. The entry contains 19412 atoms, of which 0 are hydrogens and 0 are deuteriums.

In the tables below, the ZeroOcc column contains the number of atoms modelled with zero occupancy, the AltConf column contains the number of residues with at least one atom in alternate conformation and the Trace column contains the number of residues modelled with at most 2 atoms.

- Molecule 1 is a protein called UDP-3-O-(3-hydroxymyristoyl)glucosamine N-acyltransferase.

Mol	Chain	Residues	Atoms					ZeroOcc	AltConf	Trace
			Total	C	N	O	S			
1	A	336	Total 2471	C 1542	N 438	O 472	S 19	0	0	0
1	B	336	Total 2468	C 1541	N 437	O 471	S 19	0	0	0
1	C	336	Total 2468	C 1541	N 437	O 471	S 19	0	0	0
1	D	338	Total 2486	C 1551	N 442	O 474	S 19	0	0	0
1	E	336	Total 2471	C 1542	N 438	O 472	S 19	0	0	0
1	F	336	Total 2471	C 1542	N 438	O 472	S 19	0	0	0

There are 60 discrepancies between the modelled and reference sequences:

Chain	Residue	Modelled	Actual	Comment	Reference
A	-6	MET	-	EXPRESSION TAG	UNP P21645
A	-5	GLY	-	EXPRESSION TAG	UNP P21645
A	-4	HIS	-	EXPRESSION TAG	UNP P21645
A	-3	HIS	-	EXPRESSION TAG	UNP P21645
A	-2	HIS	-	EXPRESSION TAG	UNP P21645
A	-1	HIS	-	EXPRESSION TAG	UNP P21645
A	0	HIS	-	EXPRESSION TAG	UNP P21645
A	1	HIS	-	EXPRESSION TAG	UNP P21645
A	2	ALA	-	EXPRESSION TAG	UNP P21645
A	239	ALA	HIS	CONFLICT	UNP P21645
B	-6	MET	-	EXPRESSION TAG	UNP P21645
B	-5	GLY	-	EXPRESSION TAG	UNP P21645
B	-4	HIS	-	EXPRESSION TAG	UNP P21645
B	-3	HIS	-	EXPRESSION TAG	UNP P21645
B	-2	HIS	-	EXPRESSION TAG	UNP P21645
B	-1	HIS	-	EXPRESSION TAG	UNP P21645
B	0	HIS	-	EXPRESSION TAG	UNP P21645

*Continued on next page...*

*Continued from previous page...*

Chain	Residue	Modelled	Actual	Comment	Reference
B	1	HIS	-	EXPRESSION TAG	UNP P21645
B	2	ALA	-	EXPRESSION TAG	UNP P21645
B	239	ALA	HIS	CONFLICT	UNP P21645
C	-6	MET	-	EXPRESSION TAG	UNP P21645
C	-5	GLY	-	EXPRESSION TAG	UNP P21645
C	-4	HIS	-	EXPRESSION TAG	UNP P21645
C	-3	HIS	-	EXPRESSION TAG	UNP P21645
C	-2	HIS	-	EXPRESSION TAG	UNP P21645
C	-1	HIS	-	EXPRESSION TAG	UNP P21645
C	0	HIS	-	EXPRESSION TAG	UNP P21645
C	1	HIS	-	EXPRESSION TAG	UNP P21645
C	2	ALA	-	EXPRESSION TAG	UNP P21645
C	239	ALA	HIS	CONFLICT	UNP P21645
D	-7	MET	-	EXPRESSION TAG	UNP P21645
D	-6	GLY	-	EXPRESSION TAG	UNP P21645
D	-5	HIS	-	EXPRESSION TAG	UNP P21645
D	-4	HIS	-	EXPRESSION TAG	UNP P21645
D	-3	HIS	-	EXPRESSION TAG	UNP P21645
D	-2	HIS	-	EXPRESSION TAG	UNP P21645
D	-1	HIS	-	EXPRESSION TAG	UNP P21645
D	0	HIS	-	EXPRESSION TAG	UNP P21645
D	2	ALA	-	EXPRESSION TAG	UNP P21645
D	239	ALA	HIS	CONFLICT	UNP P21645
E	-6	MET	-	EXPRESSION TAG	UNP P21645
E	-5	GLY	-	EXPRESSION TAG	UNP P21645
E	-4	HIS	-	EXPRESSION TAG	UNP P21645
E	-3	HIS	-	EXPRESSION TAG	UNP P21645
E	-2	HIS	-	EXPRESSION TAG	UNP P21645
E	-1	HIS	-	EXPRESSION TAG	UNP P21645
E	0	HIS	-	EXPRESSION TAG	UNP P21645
E	1	HIS	-	EXPRESSION TAG	UNP P21645
E	2	ALA	-	EXPRESSION TAG	UNP P21645
E	239	ALA	HIS	CONFLICT	UNP P21645
F	-6	MET	-	EXPRESSION TAG	UNP P21645
F	-5	GLY	-	EXPRESSION TAG	UNP P21645
F	-4	HIS	-	EXPRESSION TAG	UNP P21645
F	-3	HIS	-	EXPRESSION TAG	UNP P21645
F	-2	HIS	-	EXPRESSION TAG	UNP P21645
F	-1	HIS	-	EXPRESSION TAG	UNP P21645
F	0	HIS	-	EXPRESSION TAG	UNP P21645
F	1	HIS	-	EXPRESSION TAG	UNP P21645
F	2	ALA	-	EXPRESSION TAG	UNP P21645

*Continued on next page...*

Continued from previous page...

Chain	Residue	Modelled	Actual	Comment	Reference
F	239	ALA	HIS	CONFLICT	UNP P21645

- Molecule 2 is a protein called Acyl carrier protein.

Mol	Chain	Residues	Atoms				ZeroOcc	AltConf	Trace	
2	G	76	Total	C	N	O	S	0	0	0
			590	365	91	132	2			
2	H	75	Total	C	N	O	S	0	0	0
			580	359	88	131	2			
2	I	73	Total	C	N	O	S	1	0	0
			566	351	86	128	1			
2	J	70	Total	C	N	O	S	0	0	0
			547	341	82	123	1			
2	K	76	Total	C	N	O	S	0	0	0
			591	365	92	133	1			
2	L	72	Total	C	N	O	S	0	0	0
			559	347	85	126	1			

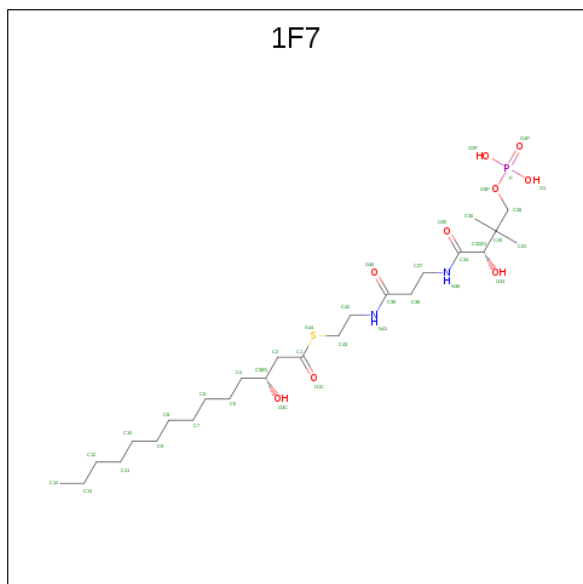
There are 12 discrepancies between the modelled and reference sequences:

Chain	Residue	Modelled	Actual	Comment	Reference
G	-2	SER	-	EXPRESSION TAG	UNP G7RM21
G	-1	HIS	-	EXPRESSION TAG	UNP G7RM21
H	-2	SER	-	EXPRESSION TAG	UNP G7RM21
H	-1	HIS	-	EXPRESSION TAG	UNP G7RM21
I	-2	SER	-	EXPRESSION TAG	UNP G7RM21
I	-1	HIS	-	EXPRESSION TAG	UNP G7RM21
J	-2	SER	-	EXPRESSION TAG	UNP G7RM21
J	-1	HIS	-	EXPRESSION TAG	UNP G7RM21
K	-2	SER	-	EXPRESSION TAG	UNP G7RM21
K	-1	HIS	-	EXPRESSION TAG	UNP G7RM21
L	-2	SER	-	EXPRESSION TAG	UNP G7RM21
L	-1	HIS	-	EXPRESSION TAG	UNP G7RM21

- Molecule 3 is CHLORIDE ION (three-letter code: CL) (formula: Cl).

Mol	Chain	Residues	Atoms		ZeroOcc	AltConf
3	A	1	Total	Cl	0	0
			1	1		
3	D	1	Total	Cl	0	0
			1	1		

- Molecule 4 is S-[2-({N-[(2S)-2-hydroxy-3,3-dimethyl-4-(phosphonoxy)butanoyl]-beta-alanyl}amino)ethyl] (3R)-3-hydroxytetradecanethioate (three-letter code: 1F7) (formula: C<sub>25</sub>H<sub>49</sub>N<sub>2</sub>O<sub>9</sub>PS).



Mol	Chain	Residues	Atoms					ZeroOcc	AltConf	
			Total	C	N	O	P			S
4	G	1	Total	C	N	O	P	S	0	0
			37	25	2	8	1	1		
4	H	1	Total	C	N	O	P	S	0	0
			37	25	2	8	1	1		
4	I	1	Total	C	N	O	P	S	0	0
			37	25	2	8	1	1		
4	J	1	Total	C	N	O	P	S	0	0
			37	25	2	8	1	1		
4	K	1	Total	C	N	O	P	S	0	0
			37	25	2	8	1	1		
4	L	1	Total	C	N	O	P	S	0	0
			37	25	2	8	1	1		

- Molecule 5 is water.

Mol	Chain	Residues	Atoms		ZeroOcc	AltConf
5	A	148	Total	O	0	0
			148	148		
5	B	133	Total	O	0	0
			133	133		
5	C	147	Total	O	0	0
			147	147		
5	D	169	Total	O	0	0
			169	169		

Continued on next page...

*Continued from previous page...*

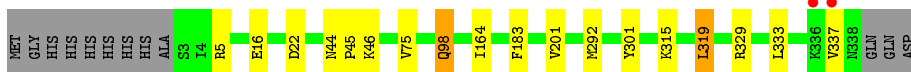
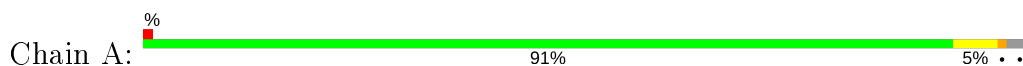
<b>Mol</b>	<b>Chain</b>	<b>Residues</b>	<b>Atoms</b>		<b>ZeroOcc</b>	<b>AltConf</b>
5	E	140	Total 140	O 140	0	0
5	F	139	Total 139	O 139	0	0
5	G	13	Total 13	O 13	0	0
5	H	7	Total 7	O 7	0	0
5	I	9	Total 9	O 9	0	0
5	J	3	Total 3	O 3	0	0
5	K	10	Total 10	O 10	0	0
5	L	2	Total 2	O 2	0	0



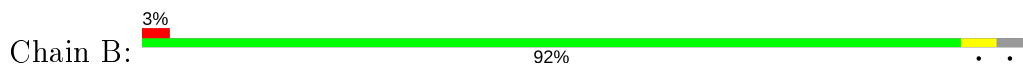
### 3 Residue-property plots [i](#)

These plots are drawn for all protein, RNA and DNA chains in the entry. The first graphic for a chain summarises the proportions of the various outlier classes displayed in the second graphic. The second graphic shows the sequence view annotated by issues in geometry and electron density. Residues are color-coded according to the number of geometric quality criteria for which they contain at least one outlier: green = 0, yellow = 1, orange = 2 and red = 3 or more. A red dot above a residue indicates a poor fit to the electron density ( $RSRZ > 2$ ). Stretches of 2 or more consecutive residues without any outlier are shown as a green connector. Residues present in the sample, but not in the model, are shown in grey.

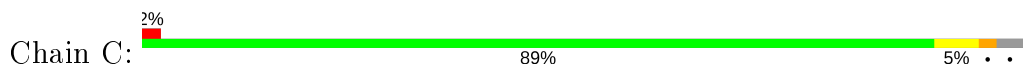
- Molecule 1: UDP-3-O-(3-hydroxymyristoyl)glucosamine N-acyltransferase



- Molecule 1: UDP-3-O-(3-hydroxymyristoyl)glucosamine N-acyltransferase



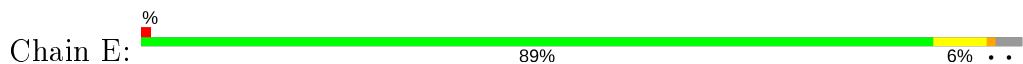
- Molecule 1: UDP-3-O-(3-hydroxymyristoyl)glucosamine N-acyltransferase

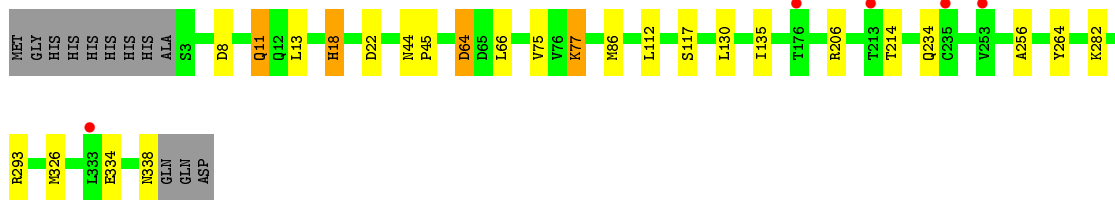


- Molecule 1: UDP-3-O-(3-hydroxymyristoyl)glucosamine N-acyltransferase

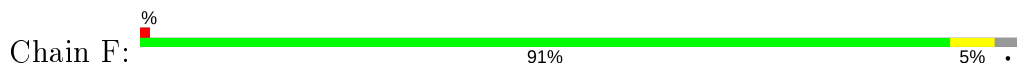


- Molecule 1: UDP-3-O-(3-hydroxymyristoyl)glucosamine N-acyltransferase

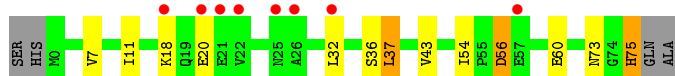
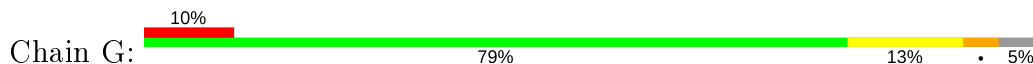




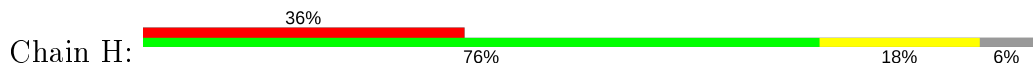
• Molecule 1: UDP-3-O-(3-hydroxymyristoyl)glucosamine N-acyltransferase



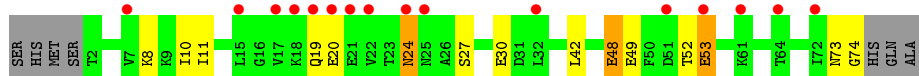
• Molecule 2: Acyl carrier protein



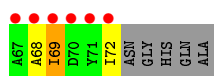
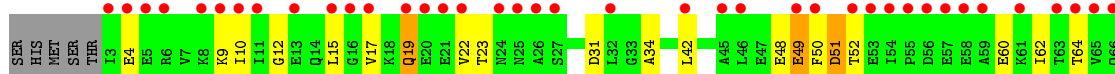
• Molecule 2: Acyl carrier protein



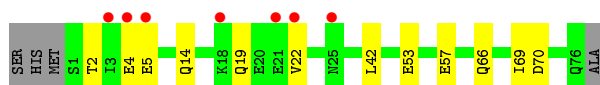
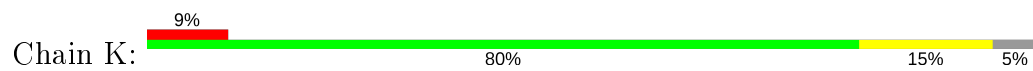
• Molecule 2: Acyl carrier protein



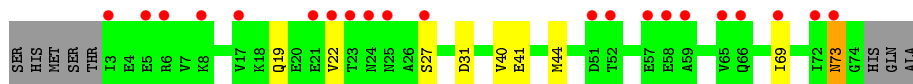
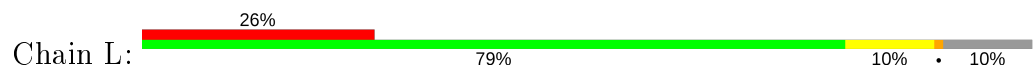
• Molecule 2: Acyl carrier protein



• Molecule 2: Acyl carrier protein



- Molecule 2: Acyl carrier protein



## 4 Data and refinement statistics

Property	Value	Source
Space group	P 1	Depositor
Cell constants a, b, c, $\alpha$ , $\beta$ , $\gamma$	84.30Å 89.44Å 112.25Å 104.06° 92.40° 118.47°	Depositor
Resolution (Å)	43.38 – 2.10 43.38 – 2.10	Depositor EDS
% Data completeness (in resolution range)	91.2 (43.38-2.10) 91.3 (43.38-2.10)	Depositor EDS
$R_{merge}$	0.10	Depositor
$R_{sym}$	(Not available)	Depositor
$\langle I/\sigma(I) \rangle$ <sup>1</sup>	4.51 (at 2.10Å)	Xtrriage
Refinement program	PHENIX 1.7.3_928	Depositor
R, $R_{free}$	0.168 , 0.216 0.165 , 0.212	Depositor DCC
$R_{free}$ test set	1913 reflections (1.24%)	wwPDB-VP
Wilson B-factor (Å <sup>2</sup> )	27.5	Xtrriage
Anisotropy	0.265	Xtrriage
Bulk solvent $k_{sol}$ (e/Å <sup>3</sup> ), $B_{sol}$ (Å <sup>2</sup> )	0.34 , 52.4	EDS
L-test for twinning <sup>2</sup>	$\langle  L  \rangle = 0.50$ , $\langle L^2 \rangle = 0.33$	Xtrriage
Estimated twinning fraction	0.000 for h,-h-k,-l	Xtrriage
$F_o, F_c$ correlation	0.96	EDS
Total number of atoms	19412	wwPDB-VP
Average B, all atoms (Å <sup>2</sup> )	46.0	wwPDB-VP

Xtrriage's analysis on translational NCS is as follows: *The largest off-origin peak in the Patterson function is 6.21% of the height of the origin peak. No significant pseudotranslation is detected.*

<sup>1</sup>Intensities estimated from amplitudes.

<sup>2</sup>Theoretical values of  $\langle |L| \rangle$ ,  $\langle L^2 \rangle$  for acentric reflections are 0.5, 0.333 respectively for untwinned datasets, and 0.375, 0.2 for perfectly twinned datasets.

## 5 Model quality [i](#)

### 5.1 Standard geometry [i](#)

Bond lengths and bond angles in the following residue types are not validated in this section: 1F7, CL

The Z score for a bond length (or angle) is the number of standard deviations the observed value is removed from the expected value. A bond length (or angle) with  $|Z| > 5$  is considered an outlier worth inspection. RMSZ is the root-mean-square of all Z scores of the bond lengths (or angles).

Mol	Chain	Bond lengths		Bond angles	
		RMSZ	# Z  >5	RMSZ	# Z  >5
1	A	0.36	0/2503	0.54	0/3395
1	B	0.35	0/2500	0.52	0/3391
1	C	0.35	0/2500	0.54	1/3391 (0.0%)
1	D	0.38	0/2519	0.54	0/3417
1	E	0.37	0/2503	0.54	0/3395
1	F	0.37	0/2503	0.53	0/3395
2	G	0.28	0/594	0.45	0/803
2	H	0.27	0/583	0.45	0/788
2	I	0.27	0/569	0.46	0/770
2	J	0.27	0/550	0.50	0/744
2	K	0.27	0/595	0.46	0/805
2	L	0.27	0/562	0.47	0/760
All	All	0.35	0/18481	0.52	1/25054 (0.0%)

There are no bond length outliers.

All (1) bond angle outliers are listed below:

Mol	Chain	Res	Type	Atoms	Z	Observed(°)	Ideal(°)
1	C	217	ARG	NE-CZ-NH2	-5.27	117.67	120.30

There are no chirality outliers.

There are no planarity outliers.

### 5.2 Too-close contacts [i](#)

In the following table, the Non-H and H(model) columns list the number of non-hydrogen atoms and hydrogen atoms in the chain respectively. The H(added) column lists the number of hydrogen atoms added and optimized by MolProbity. The Clashes column lists the number of clashes within the asymmetric unit, whereas Symm-Clashes lists symmetry related clashes.

Mol	Chain	Non-H	H(model)	H(added)	Clashes	Symm-Clashes
1	A	2471	0	2515	13	0
1	B	2468	0	2514	13	0
1	C	2468	0	2514	21	0
1	D	2486	0	2530	13	0
1	E	2471	0	2515	18	0
1	F	2471	0	2515	14	0
2	G	590	0	569	8	0
2	H	580	0	562	16	0
2	I	566	0	545	9	0
2	J	547	0	529	10	0
2	K	591	0	568	5	0
2	L	559	0	538	7	0
3	A	1	0	0	6	0
3	D	1	0	0	6	0
4	G	37	0	47	4	0
4	H	37	0	47	1	0
4	I	37	0	47	0	0
4	J	37	0	47	1	0
4	K	37	0	47	2	0
4	L	37	0	47	3	0
5	A	148	0	0	3	0
5	B	133	0	0	2	0
5	C	147	0	0	2	0
5	D	169	0	0	1	0
5	E	140	0	0	3	0
5	F	139	0	0	4	0
5	G	13	0	0	0	0
5	H	7	0	0	0	0
5	I	9	0	0	1	0
5	J	3	0	0	0	0
5	K	10	0	0	0	0
5	L	2	0	0	0	0
All	All	19412	0	18696	142	0

The all-atom clashscore is defined as the number of clashes found per 1000 atoms (including hydrogen atoms). The all-atom clashscore for this structure is 4.

All (142) close contacts within the same asymmetric unit are listed below, sorted by their clash magnitude.

Atom-1	Atom-2	Interatomic distance (Å)	Clash overlap (Å)
2:H:50:PHE:CE2	2:H:72:ILE:HG21	1.80	1.16
2:H:50:PHE:CE2	2:H:72:ILE:CG2	2.38	1.06

*Continued on next page...*

*Continued from previous page...*

Atom-1	Atom-2	Interatomic distance (Å)	Clash overlap (Å)
3:A:401:CL:CL	5:C:546:HOH:O	2.20	0.97
3:A:401:CL:CL	5:A:648:HOH:O	2.18	0.96
3:D:401:CL:CL	5:E:539:HOH:O	2.18	0.96
3:D:401:CL:CL	5:F:533:HOH:O	2.22	0.94
3:D:401:CL:CL	5:F:539:HOH:O	2.22	0.94
3:D:401:CL:CL	5:F:538:HOH:O	2.24	0.92
3:D:401:CL:CL	5:D:659:HOH:O	2.23	0.92
3:A:401:CL:CL	5:B:533:HOH:O	2.28	0.89
3:A:401:CL:CL	5:C:547:HOH:O	2.30	0.87
3:A:401:CL:CL	5:A:647:HOH:O	2.28	0.86
3:D:401:CL:CL	5:E:540:HOH:O	2.31	0.85
3:A:401:CL:CL	5:B:532:HOH:O	2.34	0.82
1:F:335:ARG:NH2	2:K:53:GLU:OE2	2.14	0.79
2:H:50:PHE:CZ	2:H:72:ILE:HG21	2.17	0.78
1:B:307:LEU:HD23	1:C:303:SER:HB3	1.67	0.77
1:C:331:LYS:HE3	2:I:53:GLU:HG3	1.66	0.77
1:C:83:TYR:HA	1:C:86:MET:HE3	1.70	0.74
2:H:50:PHE:CE2	2:H:72:ILE:HG23	2.25	0.69
2:I:48:GLU:OE1	5:I:209:HOH:O	2.11	0.68
1:B:307:LEU:HD11	1:C:291:VAL:HG22	1.76	0.68
1:D:269:GLY:HA3	4:G:101:1F7:H13	1.74	0.67
1:F:16:GLU:HG2	1:F:75:VAL:HB	1.75	0.67
2:I:73:ASN:O	2:I:74:GLY:C	2.33	0.67
1:C:60:VAL:HG21	1:C:86:MET:HE1	1.77	0.66
1:A:46:LYS:NZ	2:J:31:ASP:O	2.25	0.65
1:A:5:ARG:NH1	1:A:22:ASP:OD1	2.28	0.63
1:A:329:ARG:HH21	1:C:330:LEU:HD22	1.65	0.62
4:G:101:1F7:O33	4:G:101:1F7:O2P	2.13	0.61
1:A:292:MET:HG3	4:L:101:1F7:H32	1.82	0.61
1:A:98:GLN:NE2	5:A:643:HOH:O	2.31	0.61
2:I:8:LYS:HB3	2:I:19:GLN:HE22	1.65	0.60
1:B:183:PHE:HB3	4:J:101:1F7:H3	1.84	0.60
2:H:52:THR:OG1	2:H:53:GLU:N	2.34	0.59
1:D:287:GLY:HA3	4:G:101:1F7:H18	1.85	0.59
2:K:66:GLN:NE2	2:K:70:ASP:OD1	2.31	0.59
1:E:64:ASP:OD1	1:E:64:ASP:N	2.35	0.59
1:D:31:MET:HE3	1:D:51:LEU:HD23	1.85	0.56
2:H:50:PHE:CD2	2:H:72:ILE:HG23	2.39	0.56
1:B:335:ARG:HH21	1:B:336:LYS:HE2	1.71	0.56
2:J:4:GLU:HG2	2:J:69:ILE:HG21	1.88	0.55
2:H:19:GLN:HA	2:H:22:VAL:HG12	1.88	0.55

*Continued on next page...*

*Continued from previous page...*

Atom-1	Atom-2	Interatomic distance (Å)	Clash overlap (Å)
1:E:256:ALA:HB2	4:G:101:1F7:H15	1.87	0.54
1:C:20:ASP:HB3	1:C:23:ILE:HG13	1.88	0.54
1:E:293:ARG:NH2	2:G:37:LEU:HB3	2.22	0.54
1:B:307:LEU:CD1	1:C:291:VAL:HG22	2.37	0.53
2:L:73:ASN:H	2:L:73:ASN:ND2	2.07	0.53
2:K:4:GLU:HG3	2:K:69:ILE:HD13	1.91	0.53
2:J:19:GLN:HA	2:J:22:VAL:HG12	1.91	0.52
2:G:56:ASP:O	2:G:60:GLU:HG2	2.09	0.52
2:K:2:THR:HG23	2:K:5:GLU:H	1.73	0.52
2:G:56:ASP:N	2:G:56:ASP:OD1	2.40	0.52
1:A:301:TYR:HB3	1:C:307:LEU:HD13	1.92	0.51
1:D:301:TYR:HB3	1:F:307:LEU:HD13	1.94	0.50
1:E:206:ARG:NH1	5:E:523:HOH:O	2.38	0.50
2:I:27:SER:HB3	2:I:30:GLU:HB2	1.94	0.50
2:H:10:ILE:HD13	2:H:46:LEU:HD23	1.94	0.50
2:H:50:PHE:HE2	2:H:72:ILE:CG2	2.15	0.50
2:J:12:GLY:HA2	2:J:17:VAL:HG23	1.94	0.50
1:E:13:LEU:HD11	1:E:86:MET:HB3	1.94	0.49
1:C:332:SER:O	1:C:332:SER:OG	2.31	0.49
2:H:28:PHE:HA	2:H:32:LEU:HD12	1.94	0.49
1:A:333:LEU:O	1:A:337:VAL:HG23	2.13	0.49
1:C:6:LEU:HD11	1:C:74:LEU:HD11	1.94	0.48
1:A:329:ARG:NH2	1:C:334:GLU:OE1	2.47	0.48
1:E:112:LEU:HD22	1:E:130:LEU:HD12	1.95	0.48
2:G:73:ASN:HB3	2:G:75:HIS:HB2	1.94	0.48
1:C:13:LEU:HG	1:C:82:THR:HG23	1.94	0.48
1:C:60:VAL:HG21	1:C:86:MET:CE	2.44	0.48
2:H:28:PHE:HD1	2:H:32:LEU:HD12	1.78	0.48
2:G:43:VAL:HG13	2:G:54:ILE:HD12	1.96	0.47
1:E:117:SER:HB2	1:E:135:ILE:HG12	1.96	0.47
1:F:263:ARG:NH1	5:F:476:HOH:O	2.48	0.47
1:B:307:LEU:HD23	1:C:303:SER:CB	2.42	0.47
1:E:18:HIS:HD2	1:E:66:LEU:HD21	1.80	0.46
1:E:334:GLU:HG2	1:F:333:LEU:HD22	1.96	0.46
1:C:292:MET:HG2	1:C:293:ARG:HG3	1.98	0.46
2:I:24:ASN:N	2:I:24:ASN:OD1	2.49	0.46
2:J:10:ILE:HD11	2:J:49:GLU:HG2	1.96	0.46
1:D:114:ASN:N	1:D:132:ASP:OD1	2.38	0.46
1:F:183:PHE:HB3	4:K:101:1F7:H3	1.96	0.46
1:C:197:GLN:O	1:C:217:ARG:HD2	2.15	0.45
2:H:7:VAL:O	2:H:11:ILE:HG13	2.17	0.45

*Continued on next page...*



*Continued from previous page...*

Atom-1	Atom-2	Interatomic distance (Å)	Clash overlap (Å)
2:H:7:VAL:HA	2:H:10:ILE:HD12	1.99	0.45
1:D:112:LEU:HD22	1:D:130:LEU:HD12	1.98	0.45
2:L:69:ILE:H	2:L:69:ILE:HG13	1.60	0.45
1:B:51:LEU:HD23	1:B:69:ALA:HA	1.98	0.44
1:D:183:PHE:HB3	4:H:101:1F7:H3	1.99	0.44
1:E:8:ASP:O	1:E:11:GLN:HG3	2.18	0.44
2:J:9:LYS:HD3	2:J:19:GLN:HE22	1.82	0.44
1:D:47:TYR:O	1:D:50:HIS:HB3	2.18	0.44
1:F:314:ARG:NE	2:G:36:SER:HB2	2.33	0.44
1:A:16:GLU:HB2	1:A:75:VAL:HB	2.00	0.44
1:E:264:TYR:HB2	1:E:282:LYS:HD3	1.99	0.44
1:F:188:ASP:O	1:F:189:ARG:HG2	2.17	0.44
1:C:332:SER:O	1:C:336:LYS:HD3	2.18	0.43
1:E:18:HIS:CD2	1:E:66:LEU:HD21	2.53	0.43
1:A:183:PHE:HB3	4:L:101:1F7:H3	2.01	0.43
1:D:305:ILE:HA	1:D:306:PRO:HD3	1.87	0.43
1:D:333:LEU:HD12	1:D:333:LEU:HA	1.75	0.43
2:H:50:PHE:HB2	2:H:52:THR:HG22	2.00	0.43
1:F:7:ALA:HB2	1:F:21:GLY:HA3	2.01	0.43
1:C:333:LEU:O	1:C:337:VAL:HB	2.19	0.43
1:E:77:LYS:H	1:E:77:LYS:HG2	1.51	0.43
1:B:44:ASN:HA	1:B:45:PRO:HD2	1.90	0.43
2:I:10:ILE:HD11	2:I:49:GLU:HG2	2.00	0.43
1:A:164:ILE:HD12	1:A:201:VAL:HB	2.01	0.42
2:H:50:PHE:HE2	2:H:72:ILE:HG21	1.62	0.42
2:J:15:LEU:HD13	2:J:34:ALA:HB2	2.01	0.42
1:D:50:HIS:O	1:D:50:HIS:CD2	2.71	0.42
2:L:27:SER:N	2:L:31:ASP:OD2	2.40	0.42
4:L:101:1F7:H19	4:L:101:1F7:H40	2.02	0.42
1:B:49:GLU:CD	1:B:49:GLU:H	2.18	0.42
2:J:68:ALA:O	2:J:72:ILE:HG13	2.19	0.42
2:J:50:PHE:O	2:J:52:THR:N	2.53	0.42
2:J:69:ILE:H	2:J:69:ILE:HG12	1.53	0.42
2:G:18:LYS:HB2	2:G:18:LYS:HE2	1.65	0.41
2:I:52:THR:OG1	2:I:53:GLU:N	2.52	0.41
2:K:14:GLN:HG2	2:K:42:LEU:HB2	2.00	0.41
1:C:83:TYR:HA	1:C:86:MET:CE	2.45	0.41
1:B:314:ARG:HB3	2:L:40:VAL:HG21	2.03	0.41
1:B:48:ARG:HA	1:B:51:LEU:HD13	2.03	0.41
1:E:234:GLN:HG3	1:F:236:GLN:HB2	2.02	0.41
2:H:22:VAL:HG13	2:H:22:VAL:O	2.20	0.41

*Continued on next page...*

Continued from previous page...

Atom-1	Atom-2	Interatomic distance (Å)	Clash overlap (Å)
1:B:101:ALA:HA	1:B:102:PRO:HD3	1.94	0.41
1:C:331:LYS:HD3	1:C:332:SER:N	2.36	0.41
1:F:254:ILE:CG2	4:K:101:1F7:H10	2.50	0.41
2:L:73:ASN:H	2:L:73:ASN:HD22	1.69	0.41
2:I:11:ILE:HG12	2:I:42:LEU:HD11	2.01	0.41
1:D:234:GLN:HE21	1:E:214:THR:HG23	1.86	0.41
1:E:326:MET:HE2	1:E:326:MET:HB3	1.88	0.41
2:G:7:VAL:O	2:G:11:ILE:HG13	2.21	0.41
2:L:19:GLN:HA	2:L:22:VAL:HG23	2.01	0.41
2:L:41:GLU:HA	2:L:44:MET:HE2	2.02	0.41
1:A:315:LYS:HG3	1:A:319:LEU:HD22	2.03	0.41
1:E:338:ASN:HD21	1:F:336:LYS:NZ	2.19	0.40
1:F:52:GLY:CA	1:F:70:LYS:HD3	2.51	0.40
1:B:96:PRO:HD2	1:B:135:ILE:HG21	2.03	0.40
1:D:301:TYR:CB	1:F:307:LEU:HD13	2.52	0.40
1:A:44:ASN:HA	1:A:45:PRO:HD2	1.95	0.40
1:E:44:ASN:HA	1:E:45:PRO:HD2	1.90	0.40

There are no symmetry-related clashes.

## 5.3 Torsion angles [i](#)

### 5.3.1 Protein backbone [i](#)

In the following table, the Percentiles column shows the percent Ramachandran outliers of the chain as a percentile score with respect to all X-ray entries followed by that with respect to entries of similar resolution.

The Analysed column shows the number of residues for which the backbone conformation was analysed, and the total number of residues.

Mol	Chain	Analysed	Favoured	Allowed	Outliers	Percentiles	
1	A	334/348 (96%)	327 (98%)	7 (2%)	0	100	100
1	B	334/348 (96%)	323 (97%)	10 (3%)	1 (0%)	41	41
1	C	334/348 (96%)	326 (98%)	8 (2%)	0	100	100
1	D	336/348 (97%)	331 (98%)	5 (2%)	0	100	100
1	E	334/348 (96%)	326 (98%)	8 (2%)	0	100	100
1	F	334/348 (96%)	325 (97%)	9 (3%)	0	100	100
2	G	74/80 (92%)	72 (97%)	2 (3%)	0	100	100

Continued on next page...

Continued from previous page...

Mol	Chain	Analysed	Favoured	Allowed	Outliers	Percentiles	
2	H	73/80 (91%)	70 (96%)	3 (4%)	0	100	100
2	I	71/80 (89%)	68 (96%)	3 (4%)	0	100	100
2	J	68/80 (85%)	60 (88%)	6 (9%)	2 (3%)	4	1
2	K	74/80 (92%)	72 (97%)	1 (1%)	1 (1%)	11	6
2	L	70/80 (88%)	64 (91%)	5 (7%)	1 (1%)	11	6
All	All	2436/2568 (95%)	2364 (97%)	67 (3%)	5 (0%)	47	49

All (5) Ramachandran outliers are listed below:

Mol	Chain	Res	Type
1	B	335	ARG
2	L	73	ASN
2	J	51	ASP
2	J	62	ILE
2	K	22	VAL

### 5.3.2 Protein sidechains [i](#)

In the following table, the Percentiles column shows the percent sidechain outliers of the chain as a percentile score with respect to all X-ray entries followed by that with respect to entries of similar resolution.

The Analysed column shows the number of residues for which the sidechain conformation was analysed, and the total number of residues.

Mol	Chain	Analysed	Rotameric	Outliers	Percentiles	
1	A	264/274 (96%)	262 (99%)	2 (1%)	81	86
1	B	263/274 (96%)	261 (99%)	2 (1%)	81	86
1	C	263/274 (96%)	256 (97%)	7 (3%)	44	48
1	D	265/274 (97%)	263 (99%)	2 (1%)	81	86
1	E	264/274 (96%)	258 (98%)	6 (2%)	50	55
1	F	264/274 (96%)	263 (100%)	1 (0%)	91	94
2	G	66/69 (96%)	61 (92%)	5 (8%)	13	10
2	H	65/69 (94%)	63 (97%)	2 (3%)	40	43
2	I	63/69 (91%)	59 (94%)	4 (6%)	18	15
2	J	61/69 (88%)	52 (85%)	9 (15%)	3	1

Continued on next page...

*Continued from previous page...*

Mol	Chain	Analysed	Rotameric	Outliers	Percentiles	
2	K	66/69 (96%)	64 (97%)	2 (3%)	41	44
2	L	62/69 (90%)	62 (100%)	0	100	100
All	All	1966/2058 (96%)	1924 (98%)	42 (2%)	53	59

All (42) residues with a non-rotameric sidechain are listed below:

Mol	Chain	Res	Type
1	A	98	GLN
1	A	319	LEU
1	B	49	GLU
1	B	335	ARG
1	C	13	LEU
1	C	24	VAL
1	C	86	MET
1	C	322	ASN
1	C	331	LYS
1	C	332	SER
1	C	337	VAL
1	D	32	GLN
1	D	114	ASN
1	E	11	GLN
1	E	18	HIS
1	E	22	ASP
1	E	64	ASP
1	E	75	VAL
1	E	77	LYS
1	F	46	LYS
2	G	20	GLU
2	G	32	LEU
2	G	37	LEU
2	G	56	ASP
2	G	75	HIS
2	H	20	GLU
2	H	21	GLU
2	I	20	GLU
2	I	24	ASN
2	I	48	GLU
2	I	53	GLU
2	J	19	GLN
2	J	23	THR
2	J	42	LEU

*Continued on next page...*

*Continued from previous page...*

Mol	Chain	Res	Type
2	J	48	GLU
2	J	49	GLU
2	J	51	ASP
2	J	60	GLU
2	J	64	THR
2	J	69	ILE
2	K	19	GLN
2	K	57	GLU

Some sidechains can be flipped to improve hydrogen bonding and reduce clashes. All (14) such sidechains are listed below:

Mol	Chain	Res	Type
1	A	98	GLN
1	B	50	HIS
1	D	11	GLN
1	D	50	HIS
1	E	11	GLN
1	E	338	ASN
1	F	55	GLN
1	F	98	GLN
2	H	14	GLN
2	I	19	GLN
2	J	19	GLN
2	K	19	GLN
2	L	66	GLN
2	L	73	ASN

### 5.3.3 RNA [i](#)

There are no RNA molecules in this entry.

### 5.4 Non-standard residues in protein, DNA, RNA chains [i](#)

There are no non-standard protein/DNA/RNA residues in this entry.

### 5.5 Carbohydrates [i](#)

There are no carbohydrates in this entry.

## 5.6 Ligand geometry

Of 8 ligands modelled in this entry, 2 are monoatomic - leaving 6 for Mogul analysis.

In the following table, the Counts columns list the number of bonds (or angles) for which Mogul statistics could be retrieved, the number of bonds (or angles) that are observed in the model and the number of bonds (or angles) that are defined in the Chemical Component Dictionary. The Link column lists molecule types, if any, to which the group is linked. The Z score for a bond length (or angle) is the number of standard deviations the observed value is removed from the expected value. A bond length (or angle) with  $|Z| > 2$  is considered an outlier worth inspection. RMSZ is the root-mean-square of all Z scores of the bond lengths (or angles).

Mol	Type	Chain	Res	Link	Bond lengths			Bond angles		
					Counts	RMSZ	# Z  > 2	Counts	RMSZ	# Z  > 2
4	1F7	G	101	2	29,36,37	1.59	5 (17%)	35,44,47	1.57	10 (28%)
4	1F7	K	101	2	29,36,37	1.73	5 (17%)	35,44,47	1.83	9 (25%)
4	1F7	J	101	2	29,36,37	1.72	5 (17%)	35,44,47	1.71	7 (20%)
4	1F7	H	101	2	29,36,37	1.75	5 (17%)	35,44,47	1.72	7 (20%)
4	1F7	L	101	2	29,36,37	1.68	5 (17%)	35,44,47	1.34	5 (14%)
4	1F7	I	101	2	29,36,37	1.69	5 (17%)	35,44,47	1.79	5 (14%)

In the following table, the Chirals column lists the number of chiral outliers, the number of chiral centers analysed, the number of these observed in the model and the number defined in the Chemical Component Dictionary. Similar counts are reported in the Torsion and Rings columns. '-' means no outliers of that kind were identified.

Mol	Type	Chain	Res	Link	Chirals	Torsions	Rings
4	1F7	G	101	2	-	17/42/44/45	-
4	1F7	K	101	2	-	17/42/44/45	-
4	1F7	J	101	2	-	13/42/44/45	-
4	1F7	H	101	2	-	13/42/44/45	-
4	1F7	L	101	2	-	11/42/44/45	-
4	1F7	I	101	2	-	25/42/44/45	-

All (30) bond length outliers are listed below:

Mol	Chain	Res	Type	Atoms	Z	Observed(Å)	Ideal(Å)
4	J	101	1F7	C34-N36	5.73	1.46	1.33
4	H	101	1F7	C34-N36	5.58	1.45	1.33
4	I	101	1F7	C34-N36	5.50	1.45	1.33
4	K	101	1F7	C34-N36	5.43	1.45	1.33
4	L	101	1F7	C34-N36	5.31	1.45	1.33

*Continued on next page...*

*Continued from previous page...*

Mol	Chain	Res	Type	Atoms	Z	Observed(Å)	Ideal(Å)
4	K	101	1F7	C39-N41	5.21	1.45	1.33
4	G	101	1F7	C34-N36	5.02	1.44	1.33
4	J	101	1F7	C39-N41	5.00	1.44	1.33
4	I	101	1F7	C39-N41	4.99	1.44	1.33
4	H	101	1F7	C39-N41	4.95	1.44	1.33
4	L	101	1F7	C39-N41	4.86	1.44	1.33
4	G	101	1F7	C39-N41	4.53	1.43	1.33
4	K	101	1F7	O33-C32	-2.93	1.36	1.42
4	L	101	1F7	O33-C32	-2.92	1.36	1.42
4	H	101	1F7	O33-C32	-2.87	1.37	1.42
4	I	101	1F7	O33-C32	-2.68	1.37	1.42
4	G	101	1F7	O33-C32	-2.58	1.37	1.42
4	J	101	1F7	O33-C32	-2.57	1.37	1.42
4	G	101	1F7	O3P-C28	-2.51	1.38	1.44
4	K	101	1F7	O3P-C28	-2.37	1.39	1.44
4	J	101	1F7	O3C-C3	-2.36	1.36	1.43
4	H	101	1F7	O3C-C3	-2.32	1.36	1.43
4	K	101	1F7	O3C-C3	-2.29	1.36	1.43
4	L	101	1F7	O3C-C3	-2.26	1.36	1.43
4	I	101	1F7	O3C-C3	-2.25	1.36	1.43
4	G	101	1F7	O3C-C3	-2.25	1.36	1.43
4	H	101	1F7	O3P-C28	-2.22	1.39	1.44
4	L	101	1F7	O3P-C28	-2.18	1.39	1.44
4	I	101	1F7	O3P-C28	-2.12	1.39	1.44
4	J	101	1F7	O3P-C28	-2.05	1.39	1.44

All (43) bond angle outliers are listed below:

Mol	Chain	Res	Type	Atoms	Z	Observed(°)	Ideal(°)
4	K	101	1F7	C38-C37-N36	6.34	124.69	111.90
4	I	101	1F7	C38-C37-N36	5.85	123.70	111.90
4	J	101	1F7	C38-C37-N36	5.50	123.00	111.90
4	H	101	1F7	C38-C37-N36	5.46	122.93	111.90
4	I	101	1F7	C31-C29-C32	4.96	117.43	108.82
4	H	101	1F7	C31-C29-C32	4.47	116.57	108.82
4	G	101	1F7	C31-C29-C32	4.29	116.25	108.82
4	K	101	1F7	C31-C29-C32	4.27	116.22	108.82
4	J	101	1F7	C2-C1-S44	4.18	118.80	113.63
4	I	101	1F7	C2-C1-S44	4.18	118.80	113.63
4	J	101	1F7	C31-C29-C32	4.15	116.02	108.82
4	L	101	1F7	C38-C37-N36	4.01	119.99	111.90
4	L	101	1F7	C2-C1-S44	3.94	118.51	113.63

*Continued on next page...*

*Continued from previous page...*

Mol	Chain	Res	Type	Atoms	Z	Observed(°)	Ideal(°)
4	K	101	1F7	C2-C1-S44	3.36	117.79	113.63
4	H	101	1F7	C2-C1-S44	3.32	117.73	113.63
4	H	101	1F7	C43-C42-N41	3.02	118.77	112.42
4	G	101	1F7	C43-S44-C1	2.86	110.77	101.87
4	K	101	1F7	C43-S44-C1	2.84	110.70	101.87
4	J	101	1F7	C43-C42-N41	2.74	118.18	112.42
4	G	101	1F7	C37-N36-C34	-2.71	117.75	122.59
4	L	101	1F7	C43-S44-C1	2.69	110.26	101.87
4	K	101	1F7	O1C-C1-S44	-2.66	119.16	122.61
4	K	101	1F7	C37-N36-C34	2.65	127.32	122.59
4	G	101	1F7	C2-C1-S44	2.64	116.89	113.63
4	J	101	1F7	C37-N36-C34	2.53	127.10	122.59
4	L	101	1F7	C31-C29-C32	2.40	112.99	108.82
4	I	101	1F7	C43-S44-C1	2.36	109.23	101.87
4	J	101	1F7	C43-S44-C1	2.35	109.18	101.87
4	G	101	1F7	O1C-C1-S44	-2.35	119.56	122.61
4	H	101	1F7	C43-S44-C1	2.31	109.08	101.87
4	K	101	1F7	C43-C42-N41	2.28	117.21	112.42
4	G	101	1F7	C42-N41-C39	-2.19	118.77	122.84
4	I	101	1F7	C37-N36-C34	2.19	126.49	122.59
4	K	101	1F7	C30-C29-C32	-2.13	105.12	108.82
4	H	101	1F7	C30-C29-C28	2.13	111.71	108.23
4	G	101	1F7	C3-C2-C1	2.13	118.76	113.89
4	L	101	1F7	C30-C29-C28	2.09	111.64	108.23
4	K	101	1F7	C37-C38-C39	-2.07	108.92	112.36
4	G	101	1F7	C30-C29-C28	2.07	111.60	108.23
4	G	101	1F7	O33-C32-C29	2.06	115.09	110.25
4	J	101	1F7	O1C-C1-S44	-2.05	119.94	122.61
4	G	101	1F7	C30-C29-C32	-2.04	105.29	108.82
4	H	101	1F7	C37-N36-C34	2.02	126.19	122.59

There are no chirality outliers.

All (96) torsion outliers are listed below:

Mol	Chain	Res	Type	Atoms
4	G	101	1F7	O1C-C1-S44-C43
4	G	101	1F7	O33-C32-C34-O35
4	G	101	1F7	C42-C43-S44-C1
4	K	101	1F7	O3P-C28-C29-C32
4	K	101	1F7	C28-C29-C32-O33
4	K	101	1F7	C31-C29-C32-O33
4	J	101	1F7	C1-C2-C3-C4

*Continued on next page...*



*Continued from previous page...*

Mol	Chain	Res	Type	Atoms
4	J	101	1F7	C28-C29-C32-O33
4	J	101	1F7	C31-C29-C32-O33
4	H	101	1F7	C1-C2-C3-C4
4	L	101	1F7	C1-C2-C3-C4
4	L	101	1F7	O33-C32-C34-O35
4	I	101	1F7	C28-C29-C32-O33
4	I	101	1F7	C28-C29-C32-C34
4	I	101	1F7	C30-C29-C32-O33
4	I	101	1F7	C31-C29-C32-O33
4	I	101	1F7	C31-C29-C32-C34
4	I	101	1F7	O33-C32-C34-O35
4	K	101	1F7	C38-C37-N36-C34
4	J	101	1F7	C38-C37-N36-C34
4	I	101	1F7	C38-C37-N36-C34
4	H	101	1F7	C38-C37-N36-C34
4	L	101	1F7	C38-C37-N36-C34
4	I	101	1F7	C11-C10-C9-C8
4	I	101	1F7	C6-C7-C8-C9
4	K	101	1F7	C6-C7-C8-C9
4	K	101	1F7	C4-C5-C6-C7
4	I	101	1F7	C5-C6-C7-C8
4	K	101	1F7	C7-C8-C9-C10
4	G	101	1F7	C11-C10-C9-C8
4	K	101	1F7	C10-C11-C12-C13
4	G	101	1F7	C7-C8-C9-C10
4	I	101	1F7	C9-C10-C11-C12
4	L	101	1F7	C11-C12-C13-C14
4	G	101	1F7	C9-C10-C11-C12
4	K	101	1F7	O33-C32-C34-O35
4	J	101	1F7	O33-C32-C34-O35
4	K	101	1F7	O3P-C28-C29-C30
4	K	101	1F7	O3P-C28-C29-C31
4	G	101	1F7	C11-C12-C13-C14
4	K	101	1F7	C30-C29-C32-O33
4	J	101	1F7	C30-C29-C32-O33
4	H	101	1F7	C37-C38-C39-N41
4	G	101	1F7	C29-C32-C34-O35
4	G	101	1F7	C29-C32-C34-N36
4	J	101	1F7	C29-C32-C34-N36
4	G	101	1F7	C6-C7-C8-C9
4	H	101	1F7	C11-C12-C13-C14
4	H	101	1F7	C10-C11-C12-C13

*Continued on next page...*

*Continued from previous page...*

Mol	Chain	Res	Type	Atoms
4	G	101	1F7	O33-C32-C34-N36
4	I	101	1F7	O33-C32-C34-N36
4	G	101	1F7	C2-C1-S44-C43
4	K	101	1F7	C2-C1-S44-C43
4	I	101	1F7	C2-C1-S44-C43
4	H	101	1F7	C37-C38-C39-O40
4	I	101	1F7	C30-C29-C32-C34
4	I	101	1F7	C11-C12-C13-C14
4	K	101	1F7	C37-C38-C39-O40
4	J	101	1F7	C37-C38-C39-O40
4	K	101	1F7	C37-C38-C39-N41
4	G	101	1F7	O3P-C28-C29-C32
4	I	101	1F7	O3P-C28-C29-C32
4	H	101	1F7	O33-C32-C34-O35
4	G	101	1F7	O3P-C28-C29-C30
4	G	101	1F7	O3P-C28-C29-C31
4	I	101	1F7	O3P-C28-C29-C30
4	I	101	1F7	O3P-C28-C29-C31
4	L	101	1F7	C37-C38-C39-O40
4	J	101	1F7	C37-C38-C39-N41
4	I	101	1F7	C37-C38-C39-N41
4	I	101	1F7	C37-C38-C39-O40
4	K	101	1F7	C29-C32-C34-O35
4	I	101	1F7	C29-C32-C34-O35
4	J	101	1F7	O3P-C28-C29-C30
4	J	101	1F7	O3P-C28-C29-C31
4	L	101	1F7	O3P-C28-C29-C31
4	J	101	1F7	C11-C12-C13-C14
4	K	101	1F7	C29-C32-C34-N36
4	H	101	1F7	C29-C32-C34-N36
4	I	101	1F7	C29-C32-C34-N36
4	G	101	1F7	C3-C4-C5-C6
4	L	101	1F7	C37-C38-C39-N41
4	L	101	1F7	C42-C43-S44-C1
4	I	101	1F7	O1C-C1-S44-C43
4	I	101	1F7	C7-C8-C9-C10
4	H	101	1F7	O33-C32-C34-N36
4	H	101	1F7	O3P-C28-C29-C30
4	H	101	1F7	O3P-C28-C29-C31
4	L	101	1F7	O3P-C28-C29-C30
4	J	101	1F7	C2-C1-S44-C43
4	H	101	1F7	C31-C29-C32-O33

*Continued on next page...*

Continued from previous page...

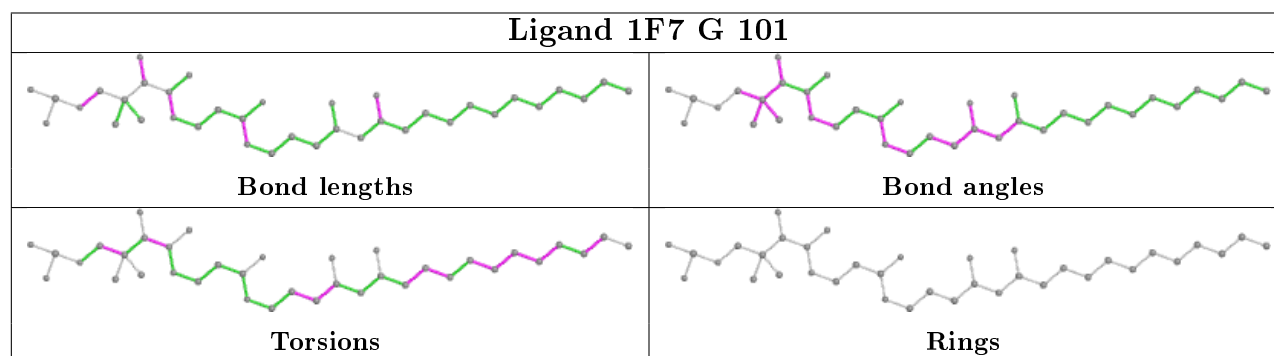
Mol	Chain	Res	Type	Atoms
4	G	101	1F7	C4-C5-C6-C7
4	I	101	1F7	C1-C2-C3-C4
4	L	101	1F7	C7-C8-C9-C10
4	H	101	1F7	C29-C32-C34-O35
4	L	101	1F7	C11-C10-C9-C8

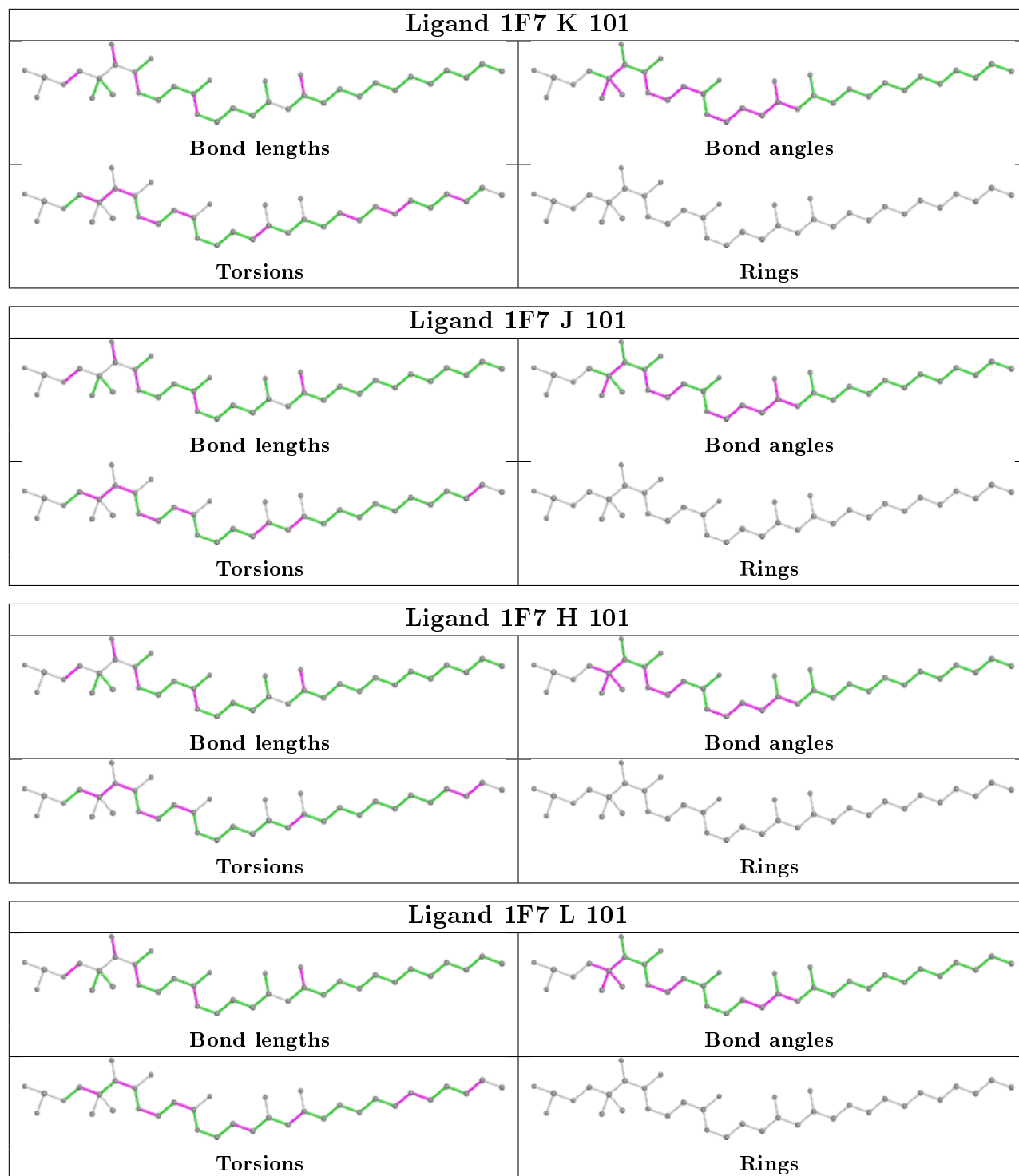
There are no ring outliers.

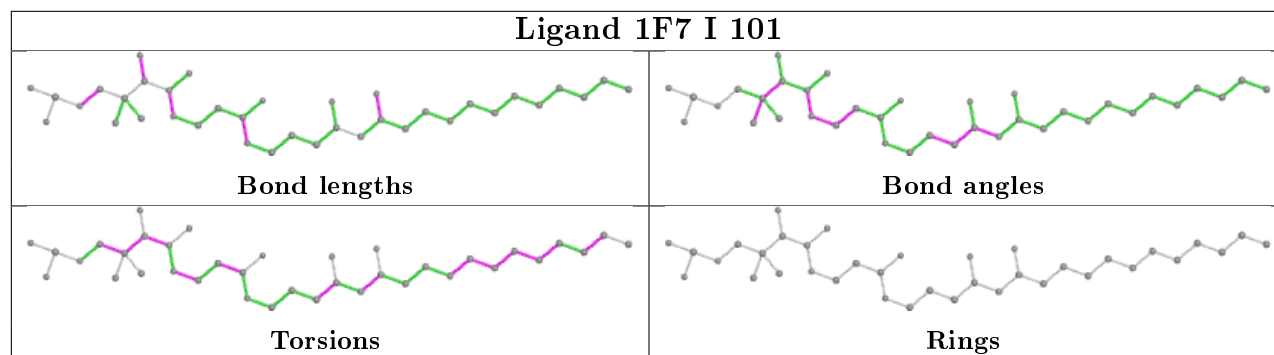
5 monomers are involved in 11 short contacts:

Mol	Chain	Res	Type	Clashes	Symm-Clashes
4	G	101	1F7	4	0
4	K	101	1F7	2	0
4	J	101	1F7	1	0
4	H	101	1F7	1	0
4	L	101	1F7	3	0

The following is a two-dimensional graphical depiction of Mogul quality analysis of bond lengths, bond angles, torsion angles, and ring geometry for all instances of the Ligand of Interest. In addition, ligands with molecular weight > 250 and outliers as shown on the validation Tables will also be included. For torsion angles, if less than 5% of the Mogul distribution of torsion angles is within 10 degrees of the torsion angle in question, then that torsion angle is considered an outlier. Any bond that is central to one or more torsion angles identified as an outlier by Mogul will be highlighted in the graph. For rings, the root-mean-square deviation (RMSD) between the ring in question and similar rings identified by Mogul is calculated over all ring torsion angles. If the average RMSD is greater than 60 degrees and the minimal RMSD between the ring in question and any Mogul-identified rings is also greater than 60 degrees, then that ring is considered an outlier. The outliers are highlighted in purple. The color gray indicates Mogul did not find sufficient equivalents in the CSD to analyse the geometry.







## 5.7 Other polymers [i](#)

There are no such residues in this entry.

## 5.8 Polymer linkage issues [i](#)

There are no chain breaks in this entry.

## 6 Fit of model and data [i](#)

### 6.1 Protein, DNA and RNA chains [i](#)

In the following table, the column labelled '#RSRZ > 2' contains the number (and percentage) of RSRZ outliers, followed by percent RSRZ outliers for the chain as percentile scores relative to all X-ray entries and entries of similar resolution. The OWAB column contains the minimum, median, 95<sup>th</sup> percentile and maximum values of the occupancy-weighted average B-factor per residue. The column labelled 'Q < 0.9' lists the number of (and percentage) of residues with an average occupancy less than 0.9.

Mol	Chain	Analysed	<RSRZ>	#RSRZ > 2	OWAB(Å <sup>2</sup> )	Q < 0.9
1	A	336/348 (96%)	-0.30	2 (0%) 89 91	19, 33, 70, 111	0
1	B	336/348 (96%)	-0.12	9 (2%) 54 60	19, 35, 76, 130	0
1	C	336/348 (96%)	-0.14	7 (2%) 63 68	19, 33, 72, 125	0
1	D	338/348 (97%)	-0.34	6 (1%) 68 72	19, 31, 60, 100	0
1	E	336/348 (96%)	-0.05	5 (1%) 73 77	18, 34, 71, 89	0
1	F	336/348 (96%)	-0.24	2 (0%) 89 91	17, 33, 71, 112	0
2	G	76/80 (95%)	0.40	8 (10%) 6 8	35, 59, 93, 102	0
2	H	75/80 (93%)	1.66	29 (38%) 0 0	45, 82, 115, 137	0
2	I	73/80 (91%)	1.24	16 (21%) 0 0	46, 72, 101, 135	1 (1%)
2	J	70/80 (87%)	2.67	45 (64%) 0 0	53, 106, 133, 145	0
2	K	76/80 (95%)	0.40	7 (9%) 9 11	41, 60, 94, 101	0
2	L	72/80 (90%)	1.42	21 (29%) 0 0	51, 88, 119, 126	0
All	All	2460/2568 (95%)	0.07	157 (6%) 19 24	17, 37, 98, 145	1 (0%)

All (157) RSRZ outliers are listed below:

Mol	Chain	Res	Type	RSRZ
2	J	58	GLU	9.8
2	J	69	ILE	7.4
2	J	65	VAL	7.1
1	A	337	VAL	6.8
2	J	66	GLN	5.6
2	J	11	ILE	5.4
2	H	58	GLU	5.4
2	J	26	ALA	5.4
2	H	57	GLU	5.4
2	J	71	TYR	5.3
1	D	337	VAL	5.2

*Continued on next page...*

*Continued from previous page...*

<b>Mol</b>	<b>Chain</b>	<b>Res</b>	<b>Type</b>	<b>RSRZ</b>
2	I	20	GLU	5.1
2	J	50	PHE	5.0
2	L	6	ARG	5.0
2	I	17	VAL	4.9
2	J	9	LYS	4.7
2	J	52	THR	4.7
2	J	6	ARG	4.4
2	J	68	ALA	4.4
2	J	3	ILE	4.4
2	J	54	ILE	4.4
2	L	72	ILE	4.4
2	L	17	VAL	4.3
2	J	46	LEU	4.3
2	H	53	GLU	4.2
1	C	335	ARG	4.2
2	I	19	GLN	4.2
2	J	21	GLU	4.2
2	L	5	GLU	4.2
1	B	331	LYS	4.2
1	B	335	ARG	4.2
2	L	51	ASP	4.1
2	H	26	ALA	4.1
2	L	66	GLN	4.0
1	B	336	LYS	3.9
2	L	69	ILE	3.9
2	H	17	VAL	3.9
2	L	3	ILE	3.8
2	J	8	LYS	3.8
2	J	17	VAL	3.7
2	H	56	ASP	3.7
2	J	61	LYS	3.6
2	H	50	PHE	3.6
2	J	13	GLU	3.6
2	J	49	GLU	3.6
2	J	4	GLU	3.5
1	F	338	ASN	3.5
2	H	51	ASP	3.5
2	L	52	THR	3.5
2	H	25	ASN	3.5
2	J	72	ILE	3.5
2	H	3	ILE	3.4
2	J	20	GLU	3.4

*Continued on next page...*

*Continued from previous page...*

<b>Mol</b>	<b>Chain</b>	<b>Res</b>	<b>Type</b>	<b>RSRZ</b>
1	A	336	LYS	3.4
2	J	16	GLY	3.4
2	L	58	GLU	3.3
2	J	15	LEU	3.3
2	L	23	THR	3.3
2	J	59	ALA	3.2
1	B	53	LEU	3.1
2	H	71	TYR	3.1
2	J	22	VAL	3.1
2	J	63	THR	3.0
2	J	64	THR	3.0
2	J	24	ASN	3.0
2	L	25	ASN	3.0
2	H	72	ILE	3.0
2	L	57	GLU	3.0
2	L	22	VAL	3.0
1	D	335	ARG	3.0
2	J	5	GLU	2.9
2	H	54	ILE	2.9
2	G	18	LYS	2.9
2	J	45	ALA	2.9
2	I	61	LYS	2.9
2	J	70	ASP	2.9
2	H	49	GLU	2.9
1	C	2	ALA	2.9
1	B	332	SER	2.9
1	B	334	GLU	2.9
2	H	61	LYS	2.9
1	E	213	THR	2.8
2	H	4	GLU	2.8
2	I	7	VAL	2.8
2	H	9	LYS	2.8
1	E	333	LEU	2.8
1	D	333	LEU	2.7
2	G	32	LEU	2.7
2	J	57	GLU	2.7
2	I	25	ASN	2.7
2	H	52	THR	2.7
2	K	21	GLU	2.7
2	J	32	LEU	2.7
2	I	24	ASN	2.7
2	J	55	PRO	2.6

*Continued on next page...*



*Continued from previous page...*

<b>Mol</b>	<b>Chain</b>	<b>Res</b>	<b>Type</b>	<b>RSRZ</b>
2	G	20	GLU	2.6
2	I	32	LEU	2.6
2	H	67	ALA	2.6
2	J	53	GLU	2.6
1	B	50	HIS	2.6
2	I	15	LEU	2.6
2	H	16	GLY	2.6
2	G	26	ALA	2.6
2	G	21	GLU	2.6
2	G	57	GLU	2.6
2	K	4	GLU	2.6
1	C	235	CYS	2.6
2	J	19	GLN	2.6
2	H	55	PRO	2.5
2	I	18	LYS	2.5
2	G	25	ASN	2.5
1	B	2	ALA	2.5
2	J	67	ALA	2.5
1	D	336	LYS	2.5
2	K	25	ASN	2.5
2	I	51	ASP	2.5
1	E	176	THR	2.5
2	H	59	ALA	2.5
2	I	21	GLU	2.5
2	L	65	VAL	2.5
2	H	10	ILE	2.5
1	F	337	VAL	2.4
2	H	46	LEU	2.4
2	K	22	VAL	2.4
2	K	18	LYS	2.4
1	D	50	HIS	2.3
2	I	22	VAL	2.3
1	C	46	LYS	2.3
2	K	3	ILE	2.3
2	L	73	ASN	2.3
1	E	253	VAL	2.3
2	L	59	ALA	2.3
2	L	8	LYS	2.3
1	E	235	CYS	2.3
2	J	25	ASN	2.3
2	J	10	ILE	2.3
2	H	68	ALA	2.2

*Continued on next page...*

*Continued from previous page...*

Mol	Chain	Res	Type	RSRZ
2	H	70	ASP	2.2
2	J	42	LEU	2.2
2	J	27	SER	2.2
2	L	24	ASN	2.2
1	C	237	ILE	2.2
1	C	212	CYS	2.2
1	D	49	GLU	2.2
2	H	20	GLU	2.2
2	K	5	GLU	2.1
2	L	21	GLU	2.1
2	I	72	ILE	2.1
2	H	2	THR	2.1
2	J	56	ASP	2.1
2	I	53	GLU	2.1
1	C	213	THR	2.1
2	G	22	VAL	2.1
2	L	27	SER	2.0
1	B	337	VAL	2.0
2	H	7	VAL	2.0
2	I	64	THR	2.0

## 6.2 Non-standard residues in protein, DNA, RNA chains [i](#)

There are no non-standard protein/DNA/RNA residues in this entry.

## 6.3 Carbohydrates [i](#)

There are no carbohydrates in this entry.

## 6.4 Ligands [i](#)

In the following table, the Atoms column lists the number of modelled atoms in the group and the number defined in the chemical component dictionary. The B-factors column lists the minimum, median, 95<sup>th</sup> percentile and maximum values of B factors of atoms in the group. The column labelled 'Q< 0.9' lists the number of atoms with occupancy less than 0.9.

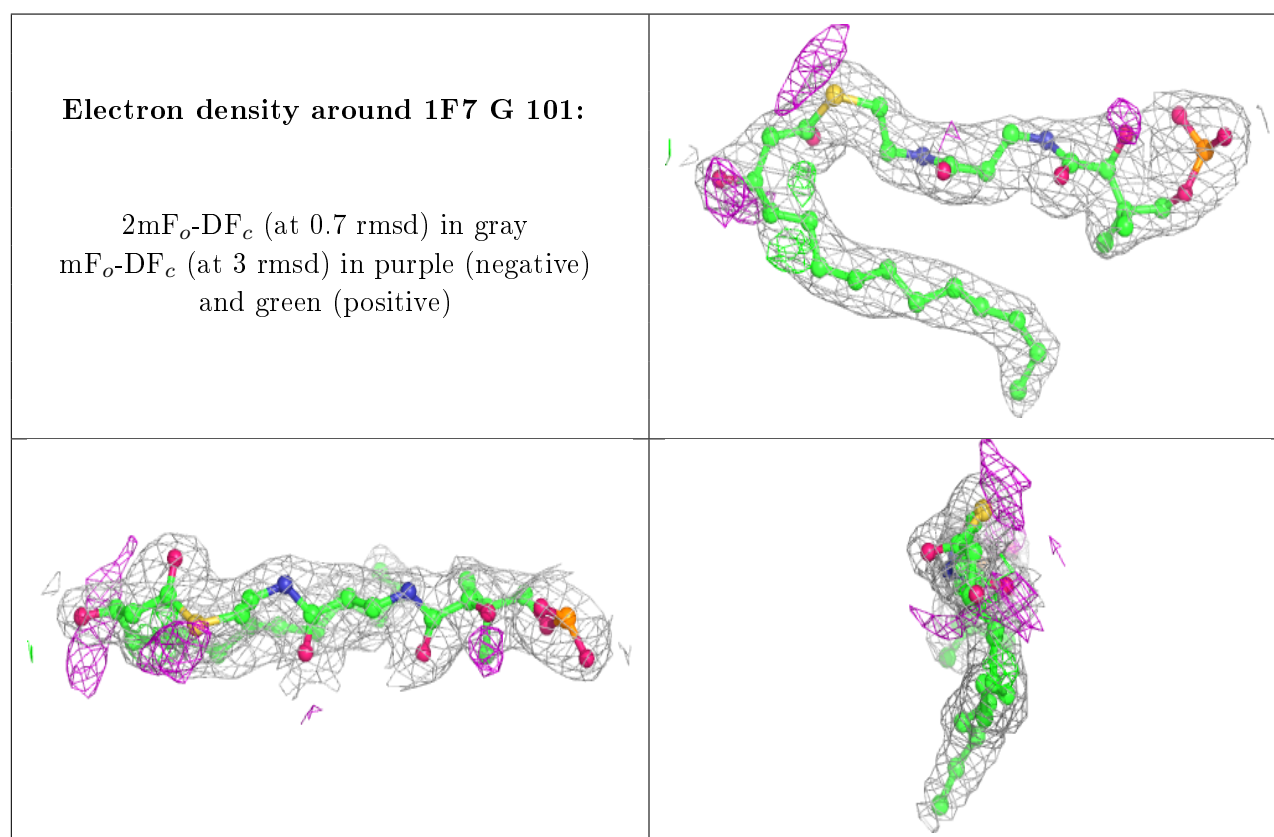
Mol	Type	Chain	Res	Atoms	RSCC	RSR	B-factors(Å <sup>2</sup> )	Q<0.9
4	1F7	G	101	37/38	0.92	0.14	28,41,49,61	0
4	1F7	J	101	37/38	0.92	0.15	28,41,59,61	0
4	1F7	K	101	37/38	0.94	0.16	25,38,54,58	0

*Continued on next page...*

Continued from previous page...

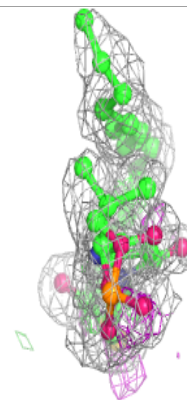
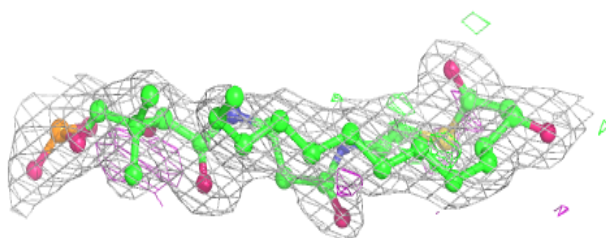
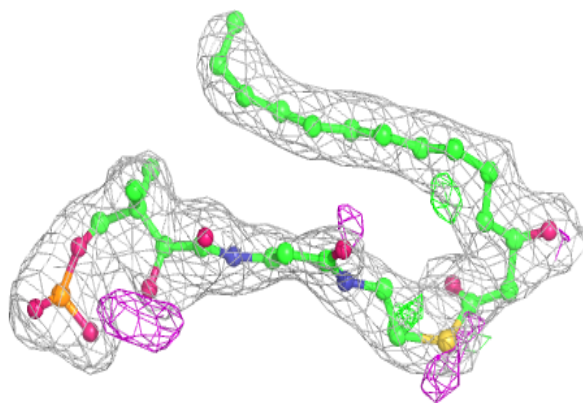
Mol	Type	Chain	Res	Atoms	RSCC	RSR	B-factors( $\text{\AA}^2$ )	Q<0.9
4	1F7	H	101	37/38	0.94	0.16	24,39,60,60	0
4	1F7	L	101	37/38	0.94	0.16	24,44,56,61	0
4	1F7	I	101	37/38	0.94	0.15	25,46,69,72	0
3	CL	D	401	1/1	0.95	0.13	45,45,45,45	0
3	CL	A	401	1/1	0.97	0.15	47,47,47,47	0

The following is a graphical depiction of the model fit to experimental electron density of all instances of the Ligand of Interest. In addition, ligands with molecular weight > 250 and outliers as shown on the geometry validation Tables will also be included. Each fit is shown from different orientation to approximate a three-dimensional view.

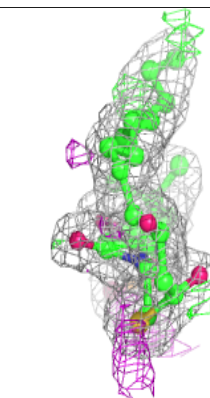
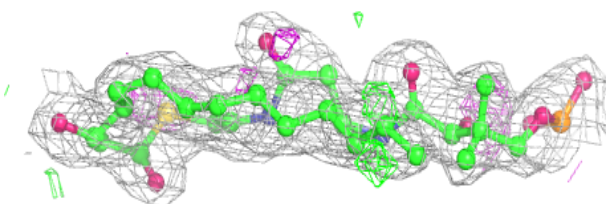
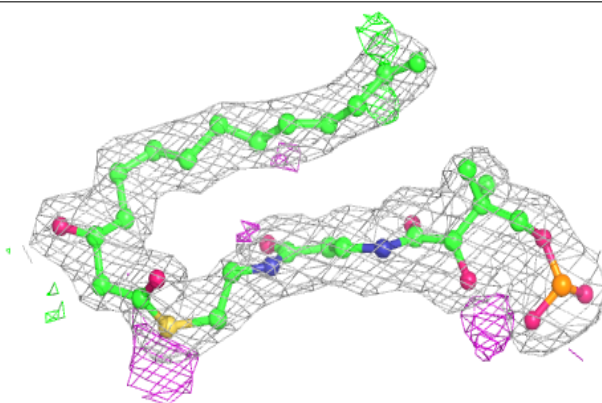


**Electron density around 1F7 J 101:**

$2mF_o-DF_c$  (at 0.7 rmsd) in gray  
 $mF_o-DF_c$  (at 3 rmsd) in purple (negative)  
and green (positive)

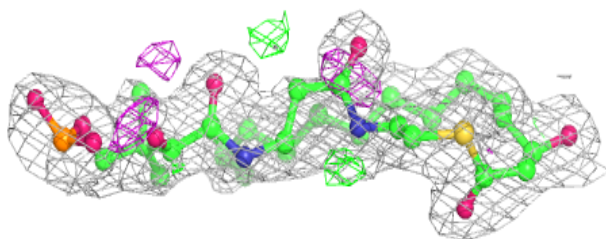
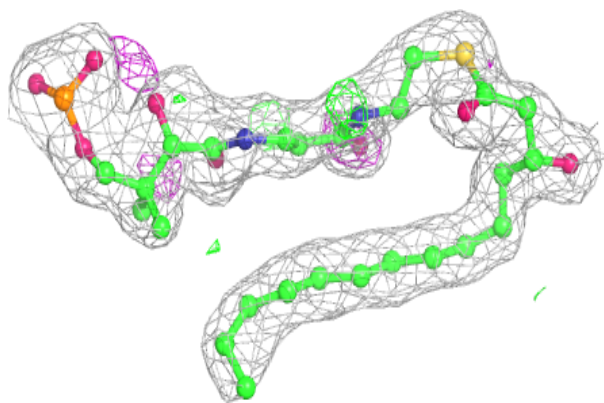
**Electron density around 1F7 K 101:**

$2mF_o-DF_c$  (at 0.7 rmsd) in gray  
 $mF_o-DF_c$  (at 3 rmsd) in purple (negative)  
and green (positive)

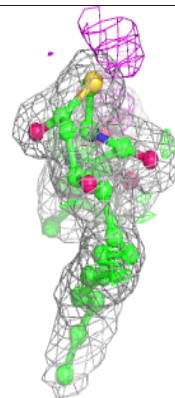
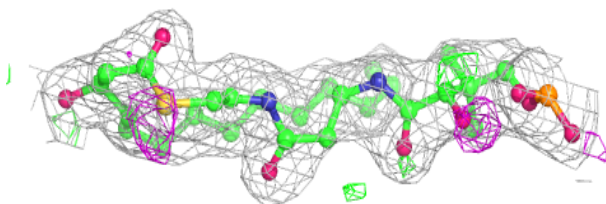
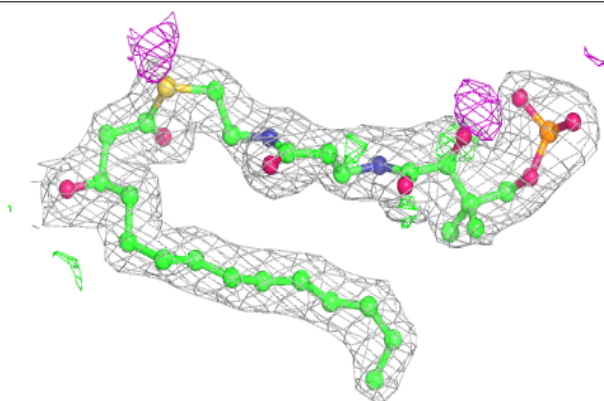


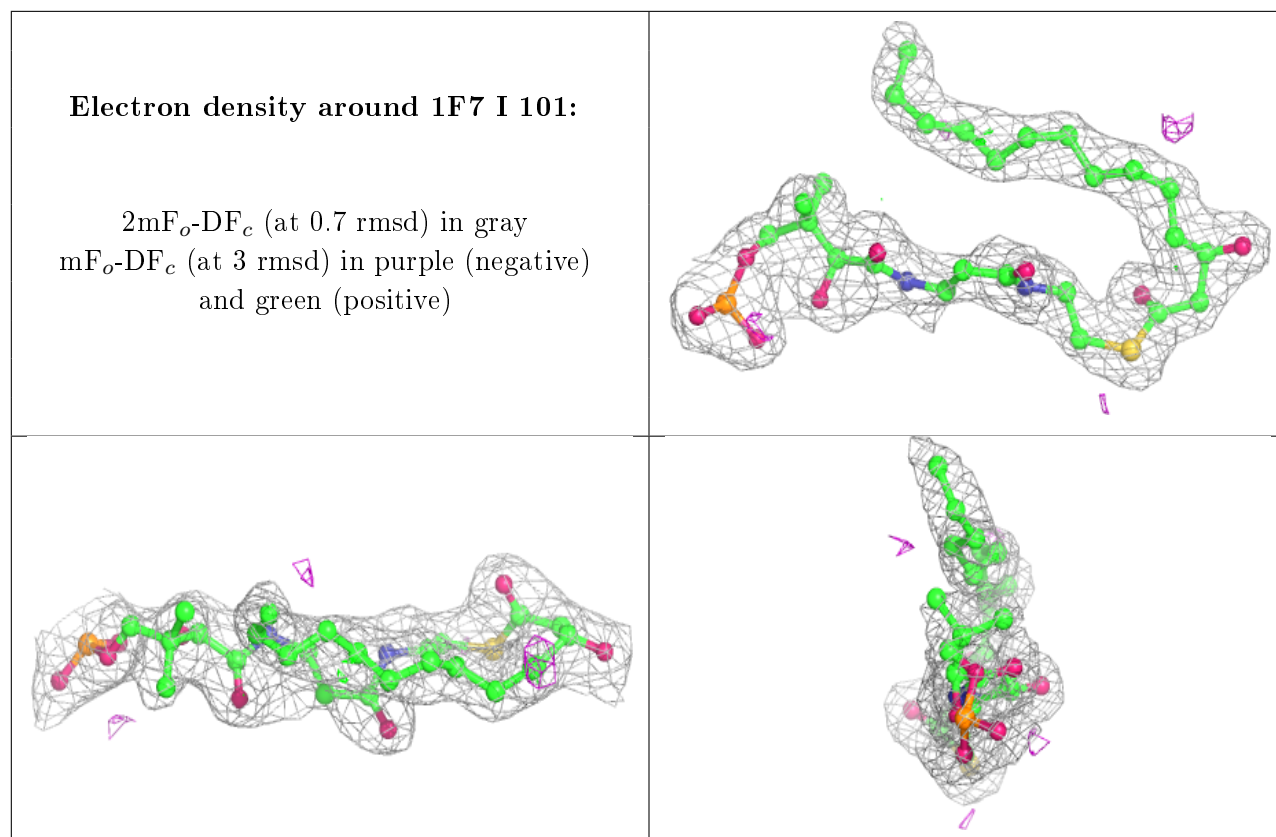
**Electron density around 1F7 H 101:**

$2mF_o-DF_c$  (at 0.7 rmsd) in gray  
 $mF_o-DF_c$  (at 3 rmsd) in purple (negative)  
and green (positive)

**Electron density around 1F7 L 101:**

$2mF_o-DF_c$  (at 0.7 rmsd) in gray  
 $mF_o-DF_c$  (at 3 rmsd) in purple (negative)  
and green (positive)





## 6.5 Other polymers [i](#)

There are no such residues in this entry.