



Full wwPDB X-ray Structure Validation Report ⓘ

Nov 14, 2023 – 11:14 PM JST

PDB ID : 6IGL
Title : Crystal Structure of human ETB receptor in complex with IRL1620
Authors : Shihoya, W.; Izume, T.; Inoue, A.; Yamashita, K.; kadji, F.M.N.; Hirata, K.; Aoki, J.; Nishizawa, T.; Nureki, O.
Deposited on : 2018-09-25
Resolution : 2.70 Å(reported)

This is a Full wwPDB X-ray Structure Validation Report for a publicly released PDB entry.

We welcome your comments at validation@mail.wwpdb.org

A user guide is available at

<https://www.wwpdb.org/validation/2017/XrayValidationReportHelp>

with specific help available everywhere you see the ⓘ symbol.

The types of validation reports are described at

<http://www.wwpdb.org/validation/2017/FAQs#types>.

The following versions of software and data (see [references ⓘ](#)) were used in the production of this report:

MolProbity : 4.02b-467
Mogul : 1.8.5 (274361), CSD as541be (2020)
Xtrriage (Phenix) : 1.13
EDS : 2.36
buster-report : 1.1.7 (2018)
Percentile statistics : 20191225.v01 (using entries in the PDB archive December 25th 2019)
Refmac : 5.8.0158
CCP4 : 7.0.044 (Gargrove)
Ideal geometry (proteins) : Engh & Huber (2001)
Ideal geometry (DNA, RNA) : Parkinson et al. (1996)
Validation Pipeline (wwPDB-VP) : 2.36

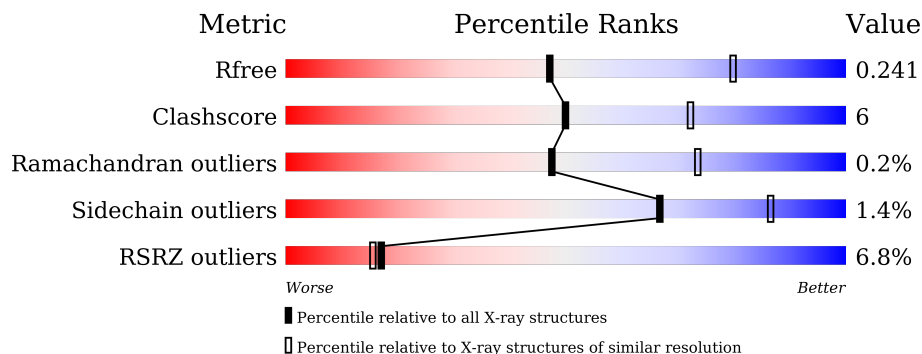
1 Overall quality at a glance

The following experimental techniques were used to determine the structure:

X-RAY DIFFRACTION

The reported resolution of this entry is 2.70 Å.

Percentile scores (ranging between 0-100) for global validation metrics of the entry are shown in the following graphic. The table shows the number of entries on which the scores are based.



Metric	Whole archive (#Entries)	Similar resolution (#Entries, resolution range(Å))
R_{free}	130704	2808 (2.70-2.70)
Clashscore	141614	3122 (2.70-2.70)
Ramachandran outliers	138981	3069 (2.70-2.70)
Sidechain outliers	138945	3069 (2.70-2.70)
RSRZ outliers	127900	2737 (2.70-2.70)

The table below summarises the geometric issues observed across the polymeric chains and their fit to the electron density. The red, orange, yellow and green segments of the lower bar indicate the fraction of residues that contain outliers for ≥ 3 , 2, 1 and 0 types of geometric quality criteria respectively. A grey segment represents the fraction of residues that are not modelled. The numeric value for each fraction is indicated below the corresponding segment, with a dot representing fractions $\leq 5\%$. The upper red bar (where present) indicates the fraction of residues that have poor fit to the electron density. The numeric value is given above the bar.

Mol	Chain	Length	Quality of chain
1	A	498	 6% 82% 12% • 6%
2	B	15	 7% 80% 20%

The following table lists non-polymeric compounds, carbohydrate monomers and non-standard residues in protein, DNA, RNA chains that are outliers for geometric or electron-density-fit criteria:

Mol	Type	Chain	Res	Chirality	Geometry	Clashes	Electron density
4	SO4	A	1205	-	-	-	X
5	OLC	A	1207	-	-	-	X
5	OLC	A	1208	-	-	-	X

2 Entry composition [i](#)

There are 6 unique types of molecules in this entry. The entry contains 4038 atoms, of which 0 are hydrogens and 0 are deuteriums.

In the tables below, the ZeroOcc column contains the number of atoms modelled with zero occupancy, the AltConf column contains the number of residues with at least one atom in alternate conformation and the Trace column contains the number of residues modelled with at most 2 atoms.

- Molecule 1 is a protein called Endothelin receptor type B,Endolysin,Endothelin receptor type B.

Mol	Chain	Residues	Atoms					ZeroOcc	AltConf	Trace
			Total	C	N	O	S			
1	A	469	3741	2443	631	643	24	0	1	0

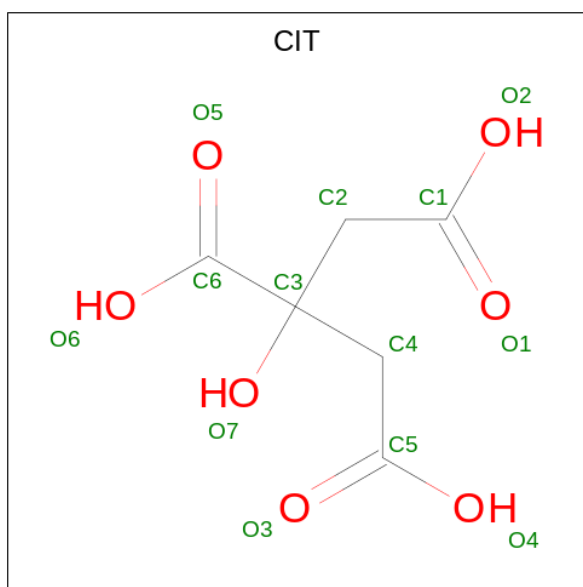
There are 13 discrepancies between the modelled and reference sequences:

Chain	Residue	Modelled	Actual	Comment	Reference
A	63	GLY	-	expression tag	UNP P24530
A	64	GLY	-	expression tag	UNP P24530
A	65	GLY	-	expression tag	UNP P24530
A	124	TYR	ARG	engineered mutation	UNP P24530
A	154	ALA	ASP	engineered mutation	UNP P24530
A	270	ALA	LYS	engineered mutation	UNP P24530
A	1052	THR	CYS	engineered mutation	UNP A0A097J809
A	1095	ALA	CYS	engineered mutation	UNP A0A097J809
A	342	ALA	SER	engineered mutation	UNP P24530
A	381	ALA	ILE	engineered mutation	UNP P24530
A	396	ALA	CYS	engineered mutation	UNP P24530
A	400	ALA	CYS	engineered mutation	UNP P24530
A	405	ALA	CYS	engineered mutation	UNP P24530

- Molecule 2 is a protein called IRL1620.

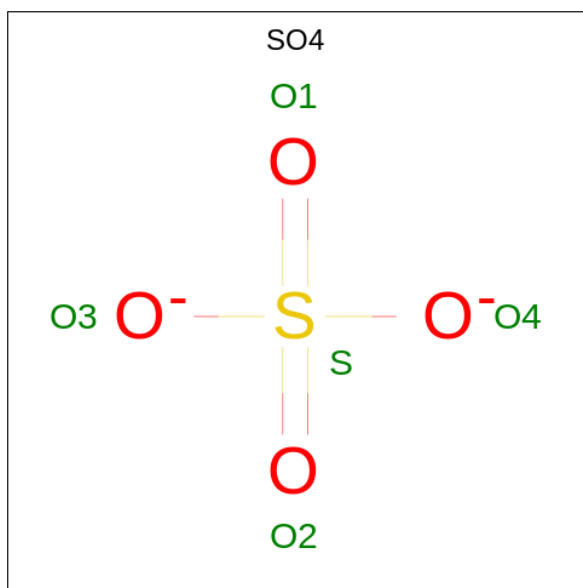
Mol	Chain	Residues	Atoms				ZeroOcc	AltConf	Trace
			Total	C	N	O			
2	B	15	130	86	17	27	0	0	0

- Molecule 3 is CITRIC ACID (three-letter code: CIT) (formula: C₆H₈O₇).



Mol	Chain	Residues	Atoms			ZeroOcc	AltConf
3	A	1	Total	C	O	0	0
			13	6	7		

- Molecule 4 is SULFATE ION (three-letter code: SO4) (formula: O₄S).



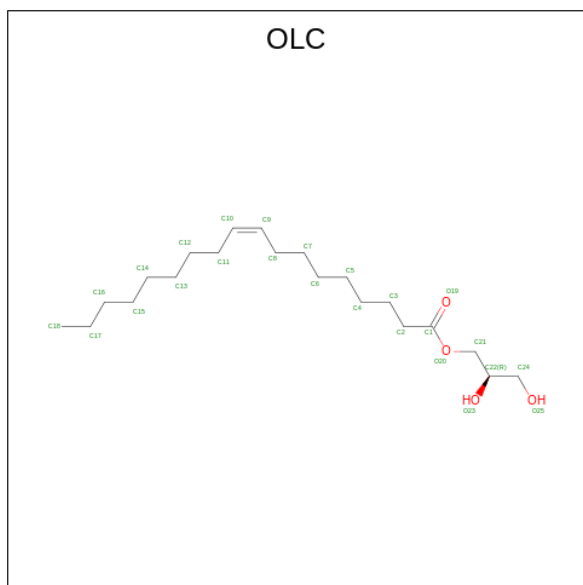
Mol	Chain	Residues	Atoms			ZeroOcc	AltConf
4	A	1	Total	O	S	0	0
			5	4	1		
4	A	1	Total	O	S	0	0
			5	4	1		
4	A	1	Total	O	S	0	0
			5	4	1		

Continued on next page...

Continued from previous page...

Mol	Chain	Residues	Atoms			ZeroOcc	AltConf
4	A	1	Total	O	S	0	0
			5	4	1		

- Molecule 5 is (2R)-2,3-dihydroxypropyl (9Z)-octadec-9-enoate (three-letter code: OLC) (formula: C₂₁H₄₀O₄).



Mol	Chain	Residues	Atoms			ZeroOcc	AltConf
5	A	1	Total	C	O	0	0
			25	21	4		
5	A	1	Total	C	O	0	0
			25	21	4		
5	A	1	Total	C	O	0	0
			25	21	4		

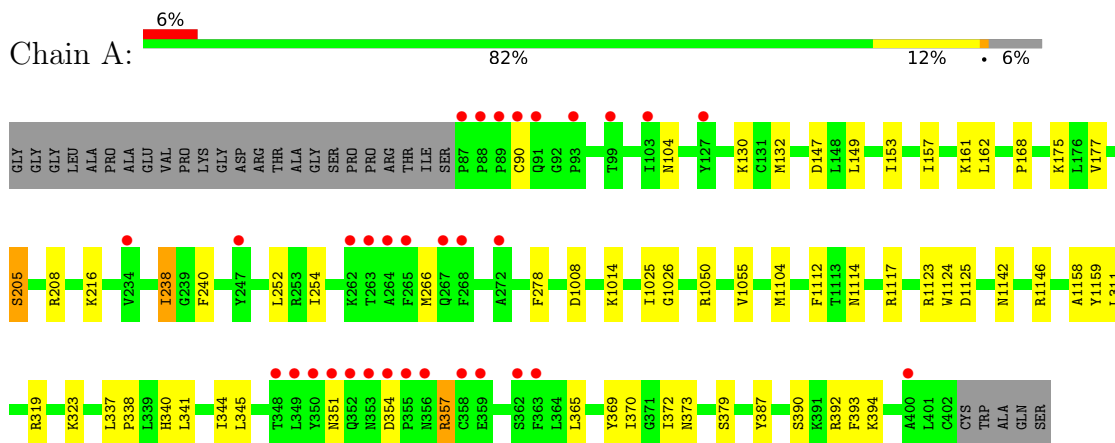
- Molecule 6 is water.

Mol	Chain	Residues	Atoms		ZeroOcc	AltConf
6	A	59	Total	O	0	0
			59	59		

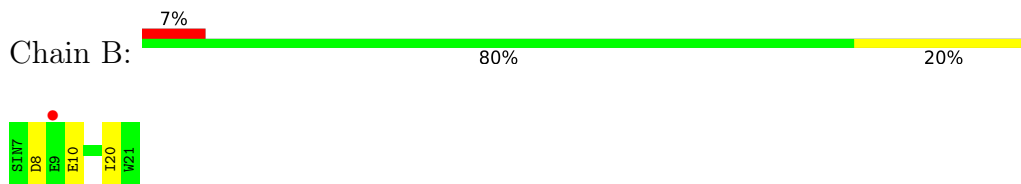
3 Residue-property plots [i](#)

These plots are drawn for all protein, RNA, DNA and oligosaccharide chains in the entry. The first graphic for a chain summarises the proportions of the various outlier classes displayed in the second graphic. The second graphic shows the sequence view annotated by issues in geometry and electron density. Residues are color-coded according to the number of geometric quality criteria for which they contain at least one outlier: green = 0, yellow = 1, orange = 2 and red = 3 or more. A red dot above a residue indicates a poor fit to the electron density ($RSRZ > 2$). Stretches of 2 or more consecutive residues without any outlier are shown as a green connector. Residues present in the sample, but not in the model, are shown in grey.

- Molecule 1: Endothelin receptor type B,Endolysin,Endothelin receptor type B



- Molecule 2: IRL1620



4 Data and refinement statistics

Property	Value	Source
Space group	C 2 2 21	Depositor
Cell constants a, b, c, α , β , γ	99.98Å 303.86Å 60.16Å 90.00° 90.00° 90.00°	Depositor
Resolution (Å)	47.16 – 2.70 47.16 – 2.70	Depositor EDS
% Data completeness (in resolution range)	99.9 (47.16-2.70) 99.9 (47.16-2.70)	Depositor EDS
R_{merge}	0.49	Depositor
R_{sym}	(Not available)	Depositor
$\langle I/\sigma(I) \rangle$ ¹	1.42 (at 2.69Å)	Xtrriage
Refinement program	PHENIX 1.13_2998	Depositor
R, R_{free}	0.207 , 0.241 0.207 , 0.241	Depositor DCC
R_{free} test set	1288 reflections (5.00%)	wwPDB-VP
Wilson B-factor (Å ²)	44.3	Xtrriage
Anisotropy	0.140	Xtrriage
Bulk solvent k_{sol} (e/Å ³), B_{sol} (Å ²)	0.30 , 62.2	EDS
L-test for twinning ²	$\langle L \rangle = 0.47$, $\langle L^2 \rangle = 0.30$	Xtrriage
Estimated twinning fraction	No twinning to report.	Xtrriage
F_o, F_c correlation	0.92	EDS
Total number of atoms	4038	wwPDB-VP
Average B, all atoms (Å ²)	63.0	wwPDB-VP

Xtrriage's analysis on translational NCS is as follows: *The largest off-origin peak in the Patterson function is 4.21% of the height of the origin peak. No significant pseudotranslation is detected.*

¹Intensities estimated from amplitudes.

²Theoretical values of $\langle |L| \rangle$, $\langle L^2 \rangle$ for acentric reflections are 0.5, 0.333 respectively for untwinned datasets, and 0.375, 0.2 for perfectly twinned datasets.

5 Model quality

5.1 Standard geometry

Bond lengths and bond angles in the following residue types are not validated in this section: CIT, OLC, SO4, SIN

The Z score for a bond length (or angle) is the number of standard deviations the observed value is removed from the expected value. A bond length (or angle) with $|Z| > 5$ is considered an outlier worth inspection. RMSZ is the root-mean-square of all Z scores of the bond lengths (or angles).

Mol	Chain	Bond lengths		Bond angles	
		RMSZ	# Z >5	RMSZ	# Z >5
1	A	0.24	0/3827	0.38	0/5193
2	B	0.23	0/127	0.33	0/172
All	All	0.24	0/3954	0.38	0/5365

There are no bond length outliers.

There are no bond angle outliers.

There are no chirality outliers.

There are no planarity outliers.

5.2 Too-close contacts

In the following table, the Non-H and H(model) columns list the number of non-hydrogen atoms and hydrogen atoms in the chain respectively. The H(added) column lists the number of hydrogen atoms added and optimized by MolProbity. The Clashes column lists the number of clashes within the asymmetric unit, whereas Symm-Clashes lists symmetry-related clashes.

Mol	Chain	Non-H	H(model)	H(added)	Clashes	Symm-Clashes
1	A	3741	0	3888	44	0
2	B	130	0	110	3	0
3	A	13	0	5	0	0
4	A	20	0	0	2	0
5	A	75	0	120	9	0
6	A	59	0	0	2	0
All	All	4038	0	4123	47	0

The all-atom clashscore is defined as the number of clashes found per 1000 atoms (including hydrogen atoms). The all-atom clashscore for this structure is 6.

All (47) close contacts within the same asymmetric unit are listed below, sorted by their clash

magnitude.

Atom-1	Atom-2	Interatomic distance (Å)	Clash overlap (Å)
1:A:104:ASN:OD1	1:A:373:ASN:ND2	2.22	0.73
1:A:238:ILE:HD11	1:A:266:MET:HG3	1.72	0.71
1:A:1125:ASP:HB2	5:A:1207:OLC:H24A	1.72	0.71
1:A:323:LYS:HE3	5:A:1208:OLC:H4	1.76	0.67
1:A:1008:ASP:OD1	1:A:1146:ARG:NH2	2.28	0.66
1:A:1114:ASN:HD21	1:A:1117:ARG:HH11	1.47	0.62
1:A:1142:ASN:ND2	4:A:1204:SO4:O4	2.35	0.60
1:A:1104:MET:HE1	1:A:1112:PHE:HE2	1.67	0.59
1:A:1014:LYS:HG2	1:A:1055:VAL:HG22	1.87	0.57
1:A:278:PHE:HA	1:A:340:HIS:CD2	2.40	0.57
1:A:1050:ARG:NH2	6:A:1304:HOH:O	2.36	0.57
1:A:341:LEU:O	1:A:345:LEU:HG	2.08	0.53
1:A:161:LYS:HD3	2:B:20:ILE:HD11	1.92	0.52
1:A:1124:TRP:N	5:A:1207:OLC:H22	2.24	0.51
1:A:319:ARG:HG3	5:A:1208:OLC:H3A	1.92	0.51
1:A:252:LEU:HD23	1:A:254:ILE:HD11	1.92	0.50
1:A:157:ILE:HD13	1:A:177:VAL:HG11	1.94	0.50
1:A:1146:ARG:HG2	1:A:1158:ALA:HB1	1.94	0.50
1:A:147:ASP:HB3	1:A:379:SER:HB2	1.94	0.49
1:A:351:ASN:O	1:A:357:ARG:HD2	2.13	0.49
1:A:354:ASP:O	1:A:357:ARG:HD3	2.13	0.48
1:A:341:LEU:HD12	1:A:344:ILE:HD11	1.96	0.48
1:A:1123[B]:ARG:HA	5:A:1207:OLC:O23	2.14	0.47
1:A:1123[A]:ARG:HA	5:A:1207:OLC:O23	2.14	0.47
1:A:90:CYS:SG	1:A:357:ARG:NH2	2.87	0.47
1:A:130:LYS:HD3	1:A:130:LYS:HA	1.75	0.47
1:A:1025:ILE:HG13	1:A:1026:GLY:N	2.29	0.47
1:A:175:LYS:HE2	1:A:240:PHE:O	2.16	0.46
4:A:1202:SO4:O4	6:A:1301:HOH:O	2.20	0.45
1:A:323:LYS:HG2	5:A:1208:OLC:H21	1.97	0.45
1:A:1125:ASP:H	5:A:1207:OLC:H22	1.81	0.45
1:A:149:LEU:O	1:A:153:ILE:HG13	2.17	0.45
1:A:1104:MET:HE2	1:A:1104:MET:HB2	1.80	0.44
1:A:357:ARG:NH1	2:B:10:GLU:OE2	2.37	0.44
2:B:10:GLU:N	2:B:10:GLU:OE1	2.51	0.44
1:A:205:SER:HB3	1:A:208:ARG:NH1	2.33	0.43
5:A:1207:OLC:H5	5:A:1207:OLC:O20	2.19	0.42
1:A:162:LEU:HB2	1:A:369:TYR:CE2	2.54	0.42
1:A:216:LYS:HE2	1:A:216:LYS:HB3	1.83	0.42
1:A:1146:ARG:HB3	1:A:1159:TYR:CZ	2.54	0.42
1:A:387:TYR:CE2	1:A:394:LYS:HG3	2.55	0.42

Continued on next page...

Continued from previous page...

Atom-1	Atom-2	Interatomic distance (Å)	Clash overlap (Å)
1:A:341:LEU:O	1:A:344:ILE:HG13	2.20	0.42
1:A:390:SER:HB3	1:A:393:PHE:HB2	2.01	0.42
1:A:370:ILE:HD13	1:A:370:ILE:HA	1.97	0.41
1:A:132:MET:HG2	1:A:392:ARG:HD3	2.03	0.41
1:A:337:LEU:N	1:A:338:PRO:HD2	2.36	0.41
1:A:372:ILE:HD13	1:A:372:ILE:HA	1.93	0.40

There are no symmetry-related clashes.

5.3 Torsion angles [i](#)

5.3.1 Protein backbone [i](#)

In the following table, the Percentiles column shows the percent Ramachandran outliers of the chain as a percentile score with respect to all X-ray entries followed by that with respect to entries of similar resolution.

The Analysed column shows the number of residues for which the backbone conformation was analysed, and the total number of residues.

Mol	Chain	Analysed	Favoured	Allowed	Outliers	Percentiles	
1	A	468/498 (94%)	456 (97%)	11 (2%)	1 (0%)	47	73
2	B	12/15 (80%)	11 (92%)	1 (8%)	0	100	100
All	All	480/513 (94%)	467 (97%)	12 (2%)	1 (0%)	47	73

All (1) Ramachandran outliers are listed below:

Mol	Chain	Res	Type
1	A	168	PRO

5.3.2 Protein sidechains [i](#)

In the following table, the Percentiles column shows the percent sidechain outliers of the chain as a percentile score with respect to all X-ray entries followed by that with respect to entries of similar resolution.

The Analysed column shows the number of residues for which the sidechain conformation was analysed, and the total number of residues.

Mol	Chain	Analysed	Rotameric	Outliers	Percentiles	
1	A	406/425 (96%)	401 (99%)	5 (1%)	71	88
2	B	12/12 (100%)	11 (92%)	1 (8%)	11	25
All	All	418/437 (96%)	412 (99%)	6 (1%)	67	86

All (6) residues with a non-rotameric sidechain are listed below:

Mol	Chain	Res	Type
1	A	205	SER
1	A	238	ILE
1	A	311	LEU
1	A	357	ARG
1	A	365	LEU
2	B	8	ASP

Sometimes sidechains can be flipped to improve hydrogen bonding and reduce clashes. All (6) such sidechains are listed below:

Mol	Chain	Res	Type
1	A	119	ASN
1	A	181	GLN
1	A	1067	GLN
1	A	1114	ASN
1	A	352	GLN
1	A	353	ASN

5.3.3 RNA [i](#)

There are no RNA molecules in this entry.

5.4 Non-standard residues in protein, DNA, RNA chains [i](#)

There are no non-standard protein/DNA/RNA residues in this entry.

5.5 Carbohydrates [i](#)

There are no monosaccharides in this entry.

5.6 Ligand geometry [i](#)

8 ligands are modelled in this entry.

In the following table, the Counts columns list the number of bonds (or angles) for which Mogul statistics could be retrieved, the number of bonds (or angles) that are observed in the model and the number of bonds (or angles) that are defined in the Chemical Component Dictionary. The Link column lists molecule types, if any, to which the group is linked. The Z score for a bond length (or angle) is the number of standard deviations the observed value is removed from the expected value. A bond length (or angle) with $|Z| > 2$ is considered an outlier worth inspection. RMSZ is the root-mean-square of all Z scores of the bond lengths (or angles).

Mol	Type	Chain	Res	Link	Bond lengths			Bond angles		
					Counts	RMSZ	# Z > 2	Counts	RMSZ	# Z > 2
4	SO4	A	1205	-	4,4,4	0.33	0	6,6,6	0.06	0
4	SO4	A	1202	-	4,4,4	0.33	0	6,6,6	0.06	0
4	SO4	A	1204	-	4,4,4	0.34	0	6,6,6	0.06	0
5	OLC	A	1206	-	24,24,24	0.92	1 (4%)	25,25,25	0.90	1 (4%)
3	CIT	A	1201	-	12,12,12	1.08	0	17,17,17	1.51	4 (23%)
5	OLC	A	1208	-	24,24,24	0.92	1 (4%)	25,25,25	0.75	0
4	SO4	A	1203	-	4,4,4	0.32	0	6,6,6	0.05	0
5	OLC	A	1207	-	24,24,24	0.95	1 (4%)	25,25,25	0.96	1 (4%)

In the following table, the Chirals column lists the number of chiral outliers, the number of chiral centers analysed, the number of these observed in the model and the number defined in the Chemical Component Dictionary. Similar counts are reported in the Torsion and Rings columns. '-' means no outliers of that kind were identified.

Mol	Type	Chain	Res	Link	Chirals	Torsions	Rings
3	CIT	A	1201	-	-	10/16/16/16	-
5	OLC	A	1206	-	-	7/24/24/24	-
5	OLC	A	1208	-	-	11/24/24/24	-
5	OLC	A	1207	-	-	11/24/24/24	-

All (3) bond length outliers are listed below:

Mol	Chain	Res	Type	Atoms	Z	Observed(Å)	Ideal(Å)
5	A	1207	OLC	O20-C1	4.47	1.46	1.33
5	A	1206	OLC	O20-C1	4.29	1.45	1.33
5	A	1208	OLC	O20-C1	4.23	1.45	1.33

All (6) bond angle outliers are listed below:

Mol	Chain	Res	Type	Atoms	Z	Observed(°)	Ideal(°)
5	A	1207	OLC	O20-C1-C2	3.17	121.86	111.91
3	A	1201	CIT	O6-C6-C3	3.13	118.49	113.05

Continued on next page...

Continued from previous page...

Mol	Chain	Res	Type	Atoms	Z	Observed(°)	Ideal(°)
3	A	1201	CIT	C3-C2-C1	3.05	121.19	113.81
3	A	1201	CIT	C2-C3-C6	2.76	116.03	110.11
5	A	1206	OLC	O20-C1-C2	2.71	120.42	111.91
3	A	1201	CIT	O5-C6-C3	-2.09	119.29	122.25

There are no chirality outliers.

All (39) torsion outliers are listed below:

Mol	Chain	Res	Type	Atoms
3	A	1201	CIT	O7-C3-C6-O5
3	A	1201	CIT	O7-C3-C6-O6
3	A	1201	CIT	C4-C3-C6-O5
3	A	1201	CIT	C4-C3-C6-O6
5	A	1207	OLC	C2-C1-O20-C21
5	A	1208	OLC	C14-C15-C16-C17
5	A	1207	OLC	O19-C1-O20-C21
3	A	1201	CIT	C1-C2-C3-O7
3	A	1201	CIT	C1-C2-C3-C6
5	A	1208	OLC	C2-C1-O20-C21
3	A	1201	CIT	C2-C3-C4-C5
3	A	1201	CIT	O7-C3-C4-C5
5	A	1208	OLC	O19-C1-O20-C21
5	A	1207	OLC	C12-C13-C14-C15
5	A	1207	OLC	C1-C2-C3-C4
5	A	1207	OLC	C13-C14-C15-C16
5	A	1208	OLC	C11-C12-C13-C14
5	A	1208	OLC	C10-C11-C12-C13
5	A	1206	OLC	C12-C13-C14-C15
3	A	1201	CIT	C1-C2-C3-C4
5	A	1207	OLC	C11-C12-C13-C14
5	A	1206	OLC	C11-C12-C13-C14
5	A	1206	OLC	C13-C14-C15-C16
5	A	1206	OLC	C3-C4-C5-C6
5	A	1207	OLC	C10-C11-C12-C13
5	A	1207	OLC	C4-C5-C6-C7
5	A	1208	OLC	C5-C6-C7-C8
5	A	1207	OLC	C2-C3-C4-C5
5	A	1206	OLC	C2-C1-O20-C21
5	A	1208	OLC	C2-C3-C4-C5
3	A	1201	CIT	C6-C3-C4-C5
5	A	1208	OLC	C12-C13-C14-C15
5	A	1206	OLC	O19-C1-O20-C21

Continued on next page...

Continued from previous page...

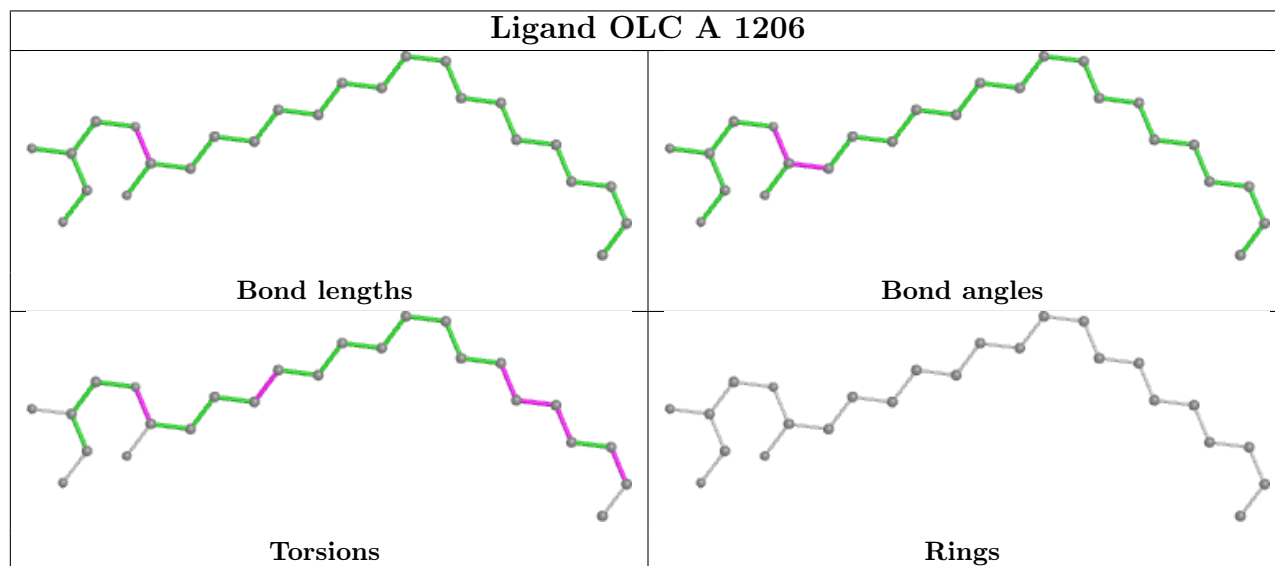
Mol	Chain	Res	Type	Atoms
5	A	1207	OLC	C3-C4-C5-C6
5	A	1207	OLC	C6-C7-C8-C9
5	A	1206	OLC	C15-C16-C17-C18
5	A	1208	OLC	C6-C7-C8-C9
5	A	1208	OLC	C7-C8-C9-C10
5	A	1208	OLC	C9-C10-C11-C12

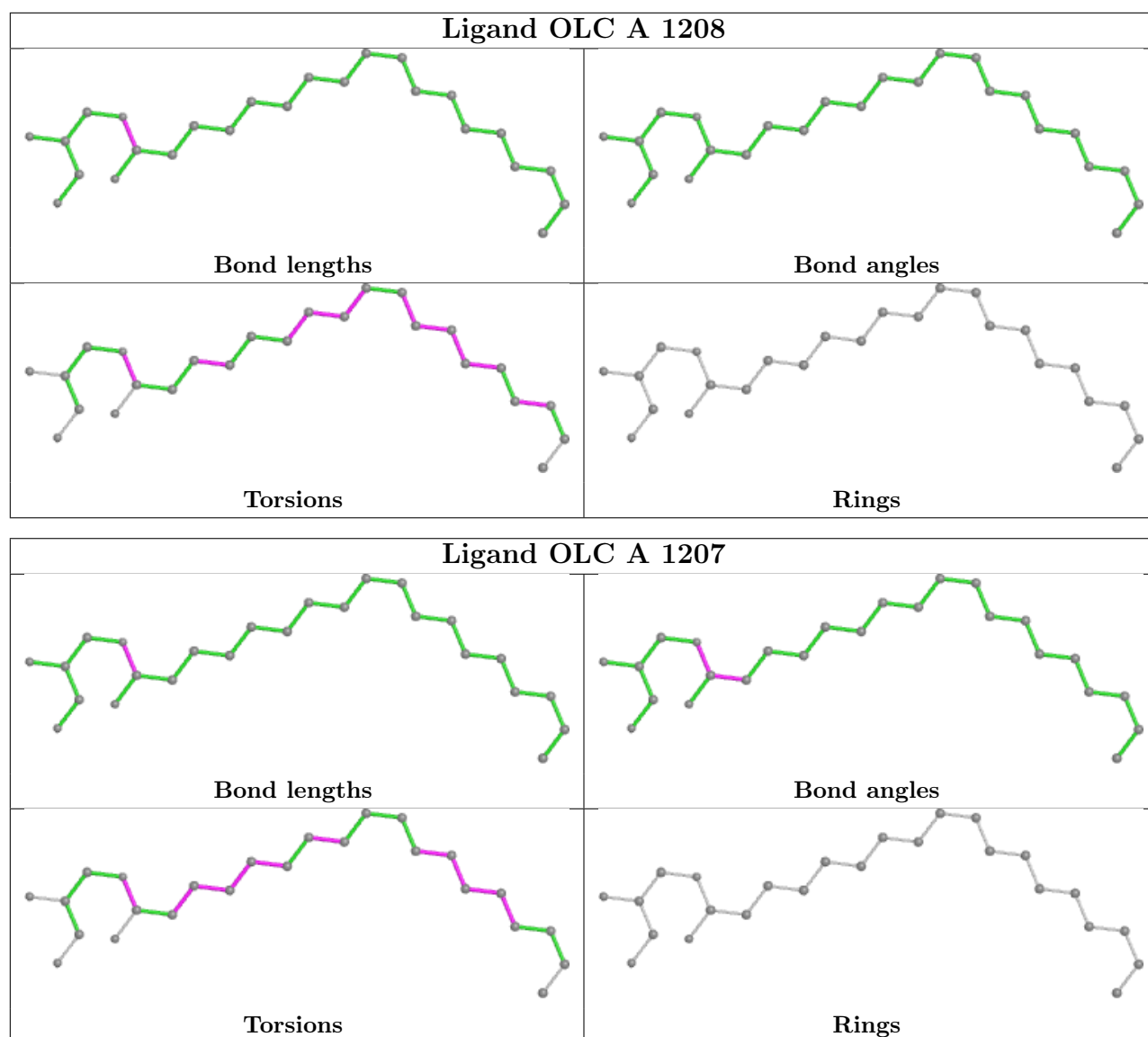
There are no ring outliers.

4 monomers are involved in 11 short contacts:

Mol	Chain	Res	Type	Clashes	Symm-Clashes
4	A	1202	SO4	1	0
4	A	1204	SO4	1	0
5	A	1208	OLC	3	0
5	A	1207	OLC	6	0

The following is a two-dimensional graphical depiction of Mogul quality analysis of bond lengths, bond angles, torsion angles, and ring geometry for all instances of the Ligand of Interest. In addition, ligands with molecular weight > 250 and outliers as shown on the validation Tables will also be included. For torsion angles, if less than 5% of the Mogul distribution of torsion angles is within 10 degrees of the torsion angle in question, then that torsion angle is considered an outlier. Any bond that is central to one or more torsion angles identified as an outlier by Mogul will be highlighted in the graph. For rings, the root-mean-square deviation (RMSD) between the ring in question and similar rings identified by Mogul is calculated over all ring torsion angles. If the average RMSD is greater than 60 degrees and the minimal RMSD between the ring in question and any Mogul-identified rings is also greater than 60 degrees, then that ring is considered an outlier. The outliers are highlighted in purple. The color gray indicates Mogul did not find sufficient equivalents in the CSD to analyse the geometry.





5.7 Other polymers [i](#)

There are no such residues in this entry.

5.8 Polymer linkage issues [i](#)

There are no chain breaks in this entry.

6 Fit of model and data

6.1 Protein, DNA and RNA chains

In the following table, the column labelled ‘#RSRZ> 2’ contains the number (and percentage) of RSRZ outliers, followed by percent RSRZ outliers for the chain as percentile scores relative to all X-ray entries and entries of similar resolution. The OWAB column contains the minimum, median, 95th percentile and maximum values of the occupancy-weighted average B-factor per residue. The column labelled ‘Q< 0.9’ lists the number of (and percentage) of residues with an average occupancy less than 0.9.

Mol	Chain	Analysed	<RSRZ>	#RSRZ>2	OWAB(Å ²)	Q<0.9
1	A	469/498 (94%)	0.05	32 (6%) 17 15	18, 56, 116, 160	0
2	B	14/15 (93%)	0.64	1 (7%) 16 14	76, 98, 150, 154	0
All	All	483/513 (94%)	0.07	33 (6%) 17 15	18, 58, 124, 160	0

All (33) RSRZ outliers are listed below:

Mol	Chain	Res	Type	RSRZ
1	A	350	TYR	5.1
1	A	93	PRO	5.1
1	A	351	ASN	4.8
1	A	349	LEU	4.5
1	A	356	ASN	4.3
1	A	355	PRO	4.1
1	A	89	PRO	3.9
1	A	272	ALA	3.7
1	A	363	PHE	3.7
1	A	265	PHE	3.5
1	A	88	PRO	3.4
1	A	247	TYR	3.3
1	A	268	PHE	3.1
1	A	400	ALA	3.0
1	A	353	ASN	2.9
1	A	264	ALA	2.8
1	A	362	SER	2.8
1	A	90	CYS	2.8
1	A	127	TYR	2.6
2	B	9	GLU	2.6
1	A	348	THR	2.5
1	A	359	GLU	2.5
1	A	352	GLN	2.5
1	A	99	THR	2.5

Continued on next page...

Continued from previous page...

Mol	Chain	Res	Type	RSRZ
1	A	267	GLN	2.4
1	A	358	CYS	2.3
1	A	234	VAL	2.3
1	A	262	LYS	2.2
1	A	354	ASP	2.2
1	A	87	PRO	2.2
1	A	91	GLN	2.2
1	A	103	ILE	2.2
1	A	263	THR	2.2

6.2 Non-standard residues in protein, DNA, RNA chains [i](#)

There are no non-standard protein/DNA/RNA residues in this entry.

6.3 Carbohydrates [i](#)

There are no monosaccharides in this entry.

6.4 Ligands [i](#)

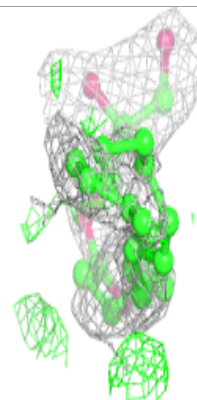
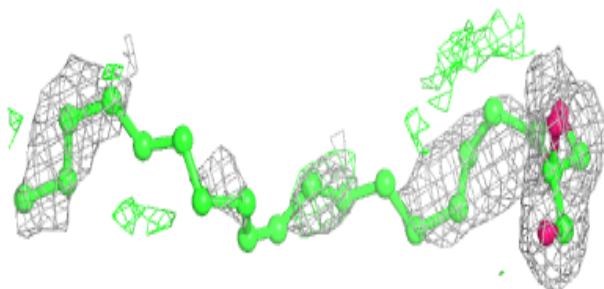
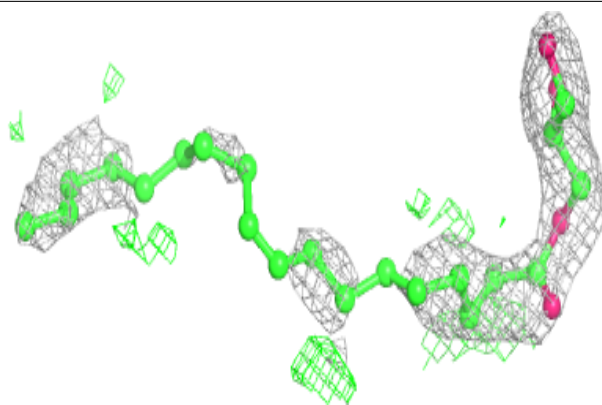
In the following table, the Atoms column lists the number of modelled atoms in the group and the number defined in the chemical component dictionary. The B-factors column lists the minimum, median, 95th percentile and maximum values of B factors of atoms in the group. The column labelled 'Q< 0.9' lists the number of atoms with occupancy less than 0.9.

Mol	Type	Chain	Res	Atoms	RSCC	RSR	B-factors(\AA^2)	Q<0.9
5	OLC	A	1208	25/25	0.73	0.41	54,74,94,96	0
5	OLC	A	1206	25/25	0.77	0.35	50,79,90,104	0
5	OLC	A	1207	25/25	0.78	0.56	39,71,83,85	25
4	SO4	A	1205	5/5	0.78	0.44	57,64,83,91	5
4	SO4	A	1203	5/5	0.85	0.26	66,68,74,96	5
4	SO4	A	1202	5/5	0.90	0.24	59,64,70,82	5
3	CIT	A	1201	13/13	0.92	0.21	37,48,85,86	0
4	SO4	A	1204	5/5	0.92	0.23	18,29,48,49	5

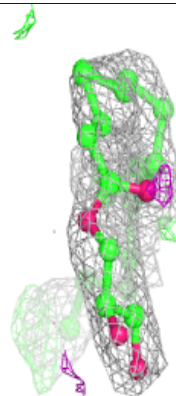
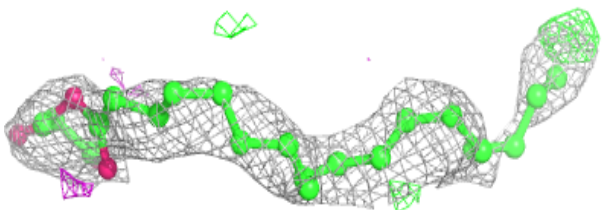
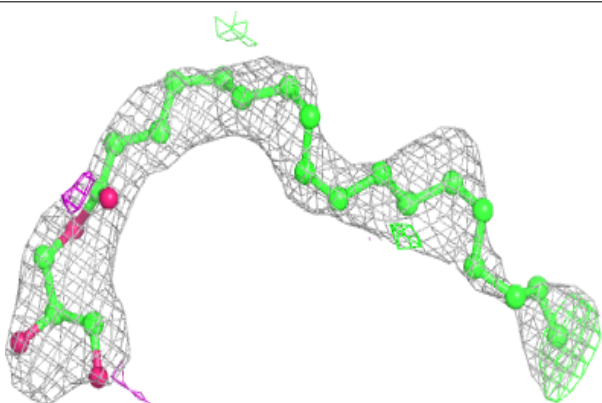
The following is a graphical depiction of the model fit to experimental electron density of all instances of the Ligand of Interest. In addition, ligands with molecular weight > 250 and outliers as shown on the geometry validation Tables will also be included. Each fit is shown from different orientation to approximate a three-dimensional view.

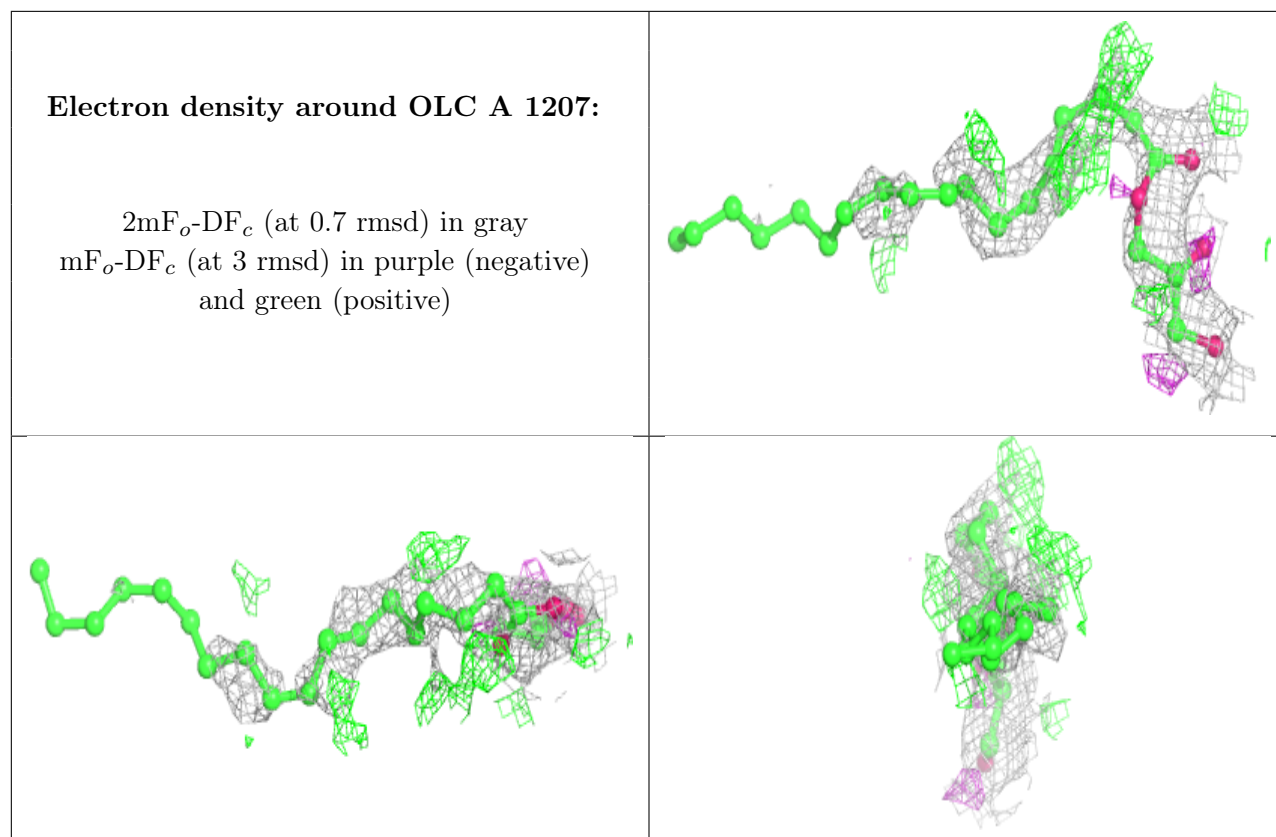
Electron density around OLC A 1208:

$2mF_o-DF_c$ (at 0.7 rmsd) in gray
 mF_o-DF_c (at 3 rmsd) in purple (negative)
and green (positive)

**Electron density around OLC A 1206:**

$2mF_o-DF_c$ (at 0.7 rmsd) in gray
 mF_o-DF_c (at 3 rmsd) in purple (negative)
and green (positive)





6.5 Other polymers [i](#)

There are no such residues in this entry.