



# Full wwPDB X-ray Structure Validation Report ⓘ

Nov 1, 2023 – 01:54 PM JST

PDB ID : 5IAO  
Title : Structure and mapping of spontaneous mutational sites of PyrR from Mycobacterium tuberculosis  
Authors : Sivaraman, J.; Ghode, P.; Ramachandran, S.  
Deposited on : 2016-02-21  
Resolution : 2.60 Å(reported)

This is a Full wwPDB X-ray Structure Validation Report for a publicly released PDB entry.

We welcome your comments at [validation@mail.wwpdb.org](mailto:validation@mail.wwpdb.org)

A user guide is available at

<https://www.wwpdb.org/validation/2017/XrayValidationReportHelp>

with specific help available everywhere you see the ⓘ symbol.

The types of validation reports are described at

<http://www.wwpdb.org/validation/2017/FAQs#types>.

---

The following versions of software and data (see [references ⓘ](#)) were used in the production of this report:

MolProbity : 4.02b-467  
Mogul : 1.8.5 (274361), CSD as541be (2020)  
Xtriage (Phenix) : 1.13  
EDS : 2.36  
Percentile statistics : 20191225.v01 (using entries in the PDB archive December 25th 2019)  
Refmac : 5.8.0158  
CCP4 : 7.0.044 (Gargrove)  
Ideal geometry (proteins) : Engh & Huber (2001)  
Ideal geometry (DNA, RNA) : Parkinson et al. (1996)  
Validation Pipeline (wwPDB-VP) : 2.36

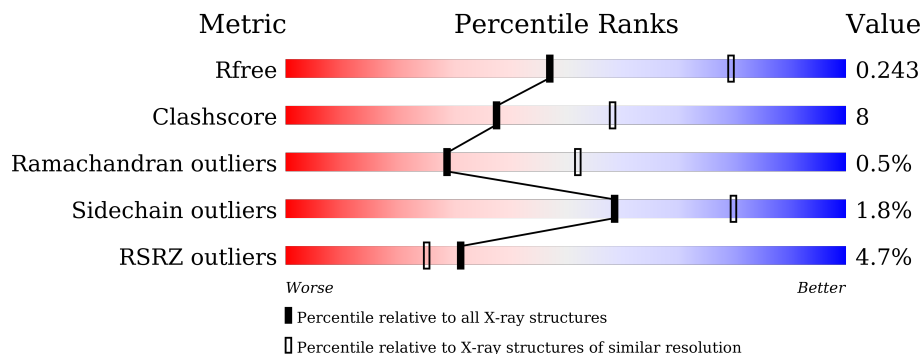
# 1 Overall quality at a glance

The following experimental techniques were used to determine the structure:

*X-RAY DIFFRACTION*

The reported resolution of this entry is 2.60 Å.

Percentile scores (ranging between 0-100) for global validation metrics of the entry are shown in the following graphic. The table shows the number of entries on which the scores are based.



Metric	Whole archive (#Entries)	Similar resolution (#Entries, resolution range(Å))
$R_{free}$	130704	3163 (2.60-2.60)
Clashscore	141614	3518 (2.60-2.60)
Ramachandran outliers	138981	3455 (2.60-2.60)
Sidechain outliers	138945	3455 (2.60-2.60)
RSRZ outliers	127900	3104 (2.60-2.60)

The table below summarises the geometric issues observed across the polymeric chains and their fit to the electron density. The red, orange, yellow and green segments of the lower bar indicate the fraction of residues that contain outliers for  $\geq 3$ , 2, 1 and 0 types of geometric quality criteria respectively. A grey segment represents the fraction of residues that are not modelled. The numeric value for each fraction is indicated below the corresponding segment, with a dot representing fractions  $\leq 5\%$ . The upper red bar (where present) indicates the fraction of residues that have poor fit to the electron density. The numeric value is given above the bar.

Mol	Chain	Length	Quality of chain
1	A	199	 2% 72% 13% • 14%
1	B	199	 4% 76% 9% • 14%
1	C	199	 4% 77% 8% • 14%
1	D	199	 6% 70% 15% • 14%
1	E	199	 5% 66% 19% • 14%
1	F	199	 4% 69% 16% •• 14%

The following table lists non-polymeric compounds, carbohydrate monomers and non-standard residues in protein, DNA, RNA chains that are outliers for geometric or electron-density-fit criteria:

<b>Mol</b>	<b>Type</b>	<b>Chain</b>	<b>Res</b>	<b>Chirality</b>	<b>Geometry</b>	<b>Clashes</b>	<b>Electron density</b>
2	URF	A	301	-	X	-	-
2	URF	C	301	-	X	-	-
2	URF	F	301	-	X	-	-

## 2 Entry composition [i](#)

There are 3 unique types of molecules in this entry. The entry contains 8150 atoms, of which 9 are hydrogens and 0 are deuteriums.

In the tables below, the ZeroOcc column contains the number of atoms modelled with zero occupancy, the AltConf column contains the number of residues with at least one atom in alternate conformation and the Trace column contains the number of residues modelled with at most 2 atoms.

- Molecule 1 is a protein called Bifunctional protein PyrR.

Mol	Chain	Residues	Atoms					ZeroOcc	AltConf	Trace
			Total	C	N	O	S			
1	A	171	1296	798	250	247	1	0	0	0
1	B	171	1295	798	250	246	1	0	0	0
1	C	171	1296	798	250	247	1	0	0	0
1	D	171	1295	798	250	246	1	0	0	0
1	E	171	1296	798	250	247	1	0	0	0
1	F	171	1295	798	250	246	1	0	0	0

There are 36 discrepancies between the modelled and reference sequences:

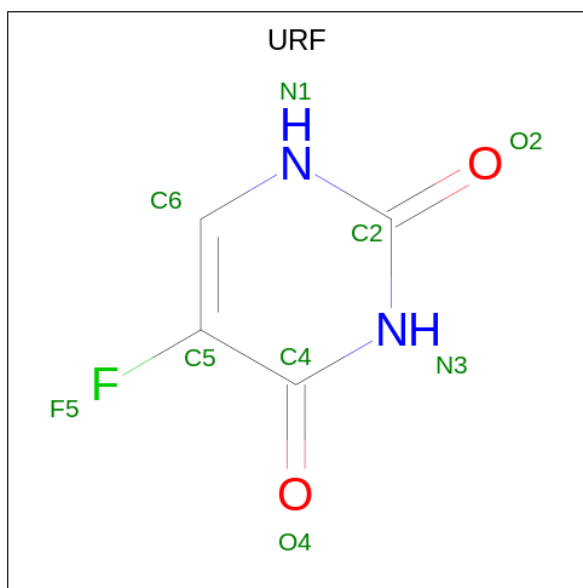
Chain	Residue	Modelled	Actual	Comment	Reference
A	194	HIS	-	expression tag	UNP A5U281
A	195	HIS	-	expression tag	UNP A5U281
A	196	HIS	-	expression tag	UNP A5U281
A	197	HIS	-	expression tag	UNP A5U281
A	198	HIS	-	expression tag	UNP A5U281
A	199	HIS	-	expression tag	UNP A5U281
B	194	HIS	-	expression tag	UNP A5U281
B	195	HIS	-	expression tag	UNP A5U281
B	196	HIS	-	expression tag	UNP A5U281
B	197	HIS	-	expression tag	UNP A5U281
B	198	HIS	-	expression tag	UNP A5U281
B	199	HIS	-	expression tag	UNP A5U281
C	194	HIS	-	expression tag	UNP A5U281
C	195	HIS	-	expression tag	UNP A5U281
C	196	HIS	-	expression tag	UNP A5U281
C	197	HIS	-	expression tag	UNP A5U281
C	198	HIS	-	expression tag	UNP A5U281

*Continued on next page...*

Continued from previous page...

Chain	Residue	Modelled	Actual	Comment	Reference
C	199	HIS	-	expression tag	UNP A5U281
D	194	HIS	-	expression tag	UNP A5U281
D	195	HIS	-	expression tag	UNP A5U281
D	196	HIS	-	expression tag	UNP A5U281
D	197	HIS	-	expression tag	UNP A5U281
D	198	HIS	-	expression tag	UNP A5U281
D	199	HIS	-	expression tag	UNP A5U281
E	194	HIS	-	expression tag	UNP A5U281
E	195	HIS	-	expression tag	UNP A5U281
E	196	HIS	-	expression tag	UNP A5U281
E	197	HIS	-	expression tag	UNP A5U281
E	198	HIS	-	expression tag	UNP A5U281
E	199	HIS	-	expression tag	UNP A5U281
F	194	HIS	-	expression tag	UNP A5U281
F	195	HIS	-	expression tag	UNP A5U281
F	196	HIS	-	expression tag	UNP A5U281
F	197	HIS	-	expression tag	UNP A5U281
F	198	HIS	-	expression tag	UNP A5U281
F	199	HIS	-	expression tag	UNP A5U281

- Molecule 2 is 5-FLUOROURACIL (three-letter code: URF) (formula: C<sub>4</sub>H<sub>3</sub>FN<sub>2</sub>O<sub>2</sub>).



Mol	Chain	Residues	Atoms					ZeroOcc	AltConf	
			Total	C	F	H	N			O
2	A	1	Total	C	F	H	N	O	0	0
			12	4	1	3	2	2		
2	C	1	Total	C	F	H	N	O	0	0
			12	4	1	3	2	2		

Continued on next page...

*Continued from previous page...*

Mol	Chain	Residues	Atoms					ZeroOcc	AltConf	
			Total	C	F	H	N			O
2	F	1	12	4	1	3	2	2	0	0

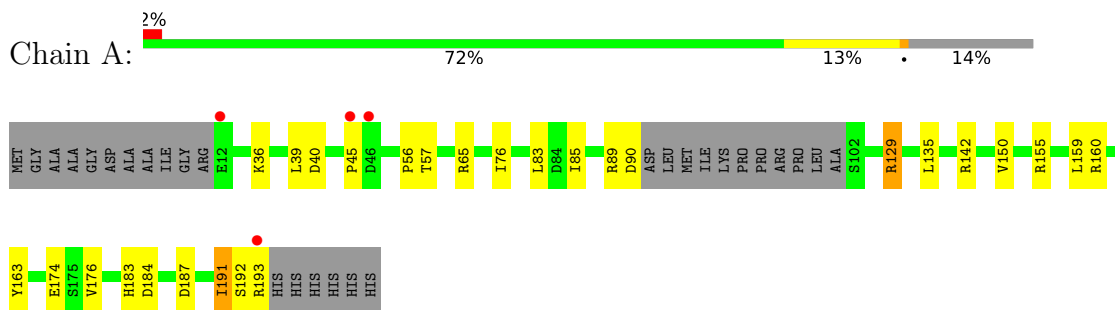
- Molecule 3 is water.

Mol	Chain	Residues	Atoms		ZeroOcc	AltConf
3	A	57	Total 57	O 57	0	0
3	B	46	Total 46	O 46	0	0
3	C	80	Total 80	O 80	0	0
3	D	51	Total 51	O 51	0	0
3	E	46	Total 46	O 46	0	0
3	F	61	Total 61	O 61	0	0

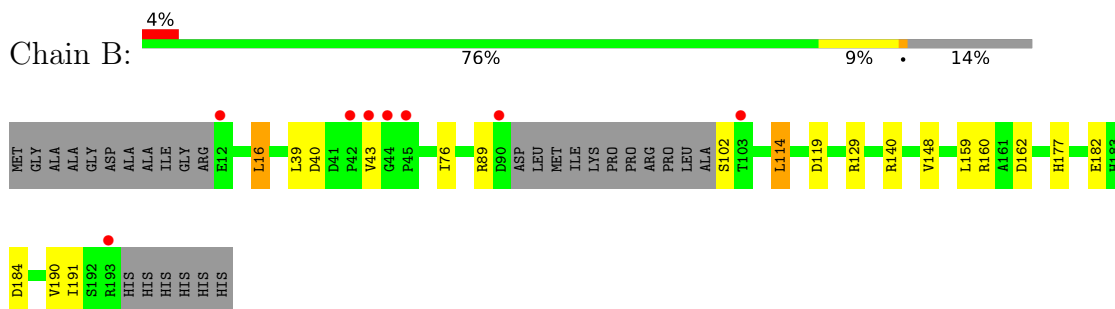
### 3 Residue-property plots [i](#)

These plots are drawn for all protein, RNA, DNA and oligosaccharide chains in the entry. The first graphic for a chain summarises the proportions of the various outlier classes displayed in the second graphic. The second graphic shows the sequence view annotated by issues in geometry and electron density. Residues are color-coded according to the number of geometric quality criteria for which they contain at least one outlier: green = 0, yellow = 1, orange = 2 and red = 3 or more. A red dot above a residue indicates a poor fit to the electron density ( $RSRZ > 2$ ). Stretches of 2 or more consecutive residues without any outlier are shown as a green connector. Residues present in the sample, but not in the model, are shown in grey.

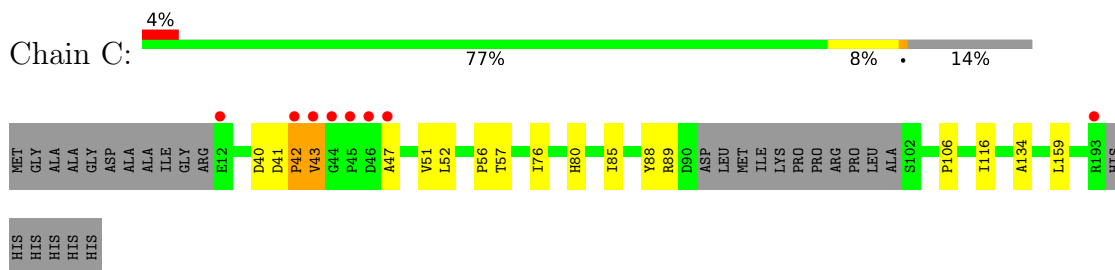
- Molecule 1: Bifunctional protein PyrR



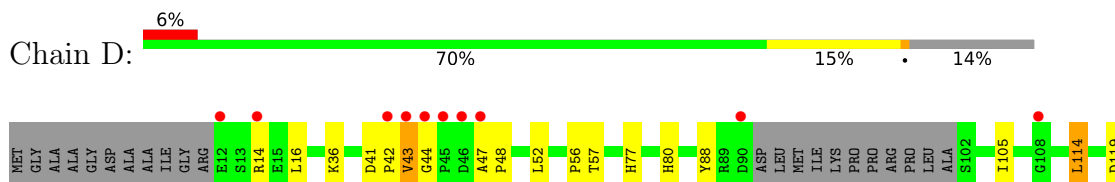
- Molecule 1: Bifunctional protein PyrR

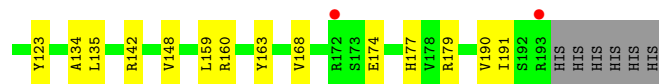


- Molecule 1: Bifunctional protein PyrR

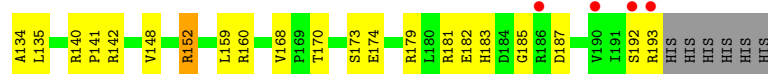
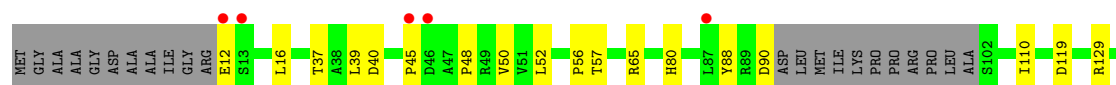


- Molecule 1: Bifunctional protein PyrR





- Molecule 1: Bifunctional protein PyrR



- Molecule 1: Bifunctional protein PyrR





## 4 Data and refinement statistics

Property	Value	Source
Space group	C 1 2 1	Depositor
Cell constants a, b, c, $\alpha$ , $\beta$ , $\gamma$	142.84Å 127.77Å 90.78Å 90.00° 90.38° 90.00°	Depositor
Resolution (Å)	42.24 – 2.60 42.24 – 2.60	Depositor EDS
% Data completeness (in resolution range)	99.1 (42.24-2.60) 93.6 (42.24-2.60)	Depositor EDS
$R_{merge}$	0.14	Depositor
$R_{sym}$	(Not available)	Depositor
$\langle I/\sigma(I) \rangle$ <sup>1</sup>	3.25 (at 2.61Å)	Xtrriage
Refinement program	PHENIX 1.9_1692	Depositor
R, $R_{free}$	0.195 , 0.238 0.203 , 0.243	Depositor DCC
$R_{free}$ test set	2007 reflections (4.03%)	wwPDB-VP
Wilson B-factor (Å <sup>2</sup> )	27.6	Xtrriage
Anisotropy	0.200	Xtrriage
Bulk solvent $k_{sol}$ (e/Å <sup>3</sup> ), $B_{sol}$ (Å <sup>2</sup> )	0.36 , 41.7	EDS
L-test for twinning <sup>2</sup>	$\langle  L  \rangle = 0.48$ , $\langle L^2 \rangle = 0.31$	Xtrriage
Estimated twinning fraction	0.029 for -h,-k,l	Xtrriage
$F_o, F_c$ correlation	0.92	EDS
Total number of atoms	8150	wwPDB-VP
Average B, all atoms (Å <sup>2</sup> )	35.0	wwPDB-VP

Xtrriage's analysis on translational NCS is as follows: *The largest off-origin peak in the Patterson function is 4.40% of the height of the origin peak. No significant pseudotranslation is detected.*

<sup>1</sup>Intensities estimated from amplitudes.

<sup>2</sup>Theoretical values of  $\langle |L| \rangle$ ,  $\langle L^2 \rangle$  for acentric reflections are 0.5, 0.333 respectively for untwinned datasets, and 0.375, 0.2 for perfectly twinned datasets.

## 5 Model quality

### 5.1 Standard geometry

Bond lengths and bond angles in the following residue types are not validated in this section: URF

The Z score for a bond length (or angle) is the number of standard deviations the observed value is removed from the expected value. A bond length (or angle) with  $|Z| > 5$  is considered an outlier worth inspection. RMSZ is the root-mean-square of all Z scores of the bond lengths (or angles).

Mol	Chain	Bond lengths		Bond angles	
		RMSZ	# Z  >5	RMSZ	# Z  >5
1	A	0.27	0/1312	0.48	0/1780
1	B	0.26	0/1311	0.49	0/1779
1	C	0.27	0/1312	0.50	0/1780
1	D	0.27	0/1311	0.51	0/1779
1	E	0.27	0/1312	0.50	0/1780
1	F	0.27	0/1311	0.49	0/1779
All	All	0.27	0/7869	0.49	0/10677

There are no bond length outliers.

There are no bond angle outliers.

There are no chirality outliers.

There are no planarity outliers.

### 5.2 Too-close contacts

In the following table, the Non-H and H(model) columns list the number of non-hydrogen atoms and hydrogen atoms in the chain respectively. The H(added) column lists the number of hydrogen atoms added and optimized by MolProbity. The Clashes column lists the number of clashes within the asymmetric unit, whereas Symm-Clashes lists symmetry-related clashes.

Mol	Chain	Non-H	H(model)	H(added)	Clashes	Symm-Clashes
1	A	1296	0	1321	24	0
1	B	1295	0	1321	19	0
1	C	1296	0	1321	11	0
1	D	1295	0	1321	28	0
1	E	1296	0	1321	30	0
1	F	1295	0	1321	23	0
2	A	9	3	3	0	0

*Continued on next page...*

*Continued from previous page...*

Mol	Chain	Non-H	H(model)	H(added)	Clashes	Symm-Clashes
2	C	9	3	3	0	0
2	F	9	3	3	1	0
3	A	57	0	0	1	0
3	B	46	0	0	1	0
3	C	80	0	0	0	0
3	D	51	0	0	0	0
3	E	46	0	0	2	0
3	F	61	0	0	0	0
All	All	8141	9	7935	121	0

The all-atom clashscore is defined as the number of clashes found per 1000 atoms (including hydrogen atoms). The all-atom clashscore for this structure is 8.

All (121) close contacts within the same asymmetric unit are listed below, sorted by their clash magnitude.

Atom-1	Atom-2	Interatomic distance (Å)	Clash overlap (Å)
1:A:57:THR:HG23	1:A:183:HIS:HE1	1.45	0.82
1:A:159:LEU:HD23	1:B:159:LEU:HD23	1.61	0.81
1:F:16:LEU:HD11	1:F:191:ILE:HG22	1.64	0.80
1:C:159:LEU:HD23	1:D:159:LEU:HD23	1.63	0.80
1:B:16:LEU:HD21	1:B:191:ILE:HB	1.67	0.77
1:E:159:LEU:HD23	1:F:159:LEU:HD23	1.70	0.74
1:A:57:THR:HG23	1:A:183:HIS:CE1	2.23	0.73
1:A:45:PRO:O	1:A:142:ARG:NH1	2.21	0.72
1:B:159:LEU:O	1:B:160:ARG:HD2	1.90	0.72
1:F:133:ASP:O	1:F:136:ARG:HG2	1.89	0.72
1:D:14:ARG:NH2	1:D:174:GLU:OE2	2.23	0.71
1:F:16:LEU:HD11	1:F:191:ILE:CG2	2.20	0.71
1:F:58:ARG:NH1	2:F:301:URF:F5	2.12	0.70
1:E:159:LEU:O	1:E:160:ARG:HD2	1.92	0.68
1:D:159:LEU:O	1:D:160:ARG:HD2	1.94	0.66
1:B:102:SER:HB3	1:D:105:ILE:O	1.96	0.66
1:D:43:VAL:HG13	1:D:47:ALA:O	1.95	0.66
1:D:48:PRO:HB3	1:D:142:ARG:CZ	2.26	0.65
1:D:16:LEU:HD11	1:D:191:ILE:CG2	2.28	0.64
1:F:65:ARG:NH2	1:F:187:ASP:OD2	2.31	0.63
1:A:174:GLU:HB3	1:A:191:ILE:HD11	1.81	0.63
1:F:45:PRO:O	1:F:142:ARG:NH1	2.32	0.63
1:B:184:ASP:O	1:D:42:PRO:HA	1.98	0.63
1:A:65:ARG:HH22	1:A:187:ASP:CG	2.03	0.62
1:A:40:ASP:HA	1:A:76:ILE:HG13	1.81	0.62

*Continued on next page...*

*Continued from previous page...*

Atom-1	Atom-2	Interatomic distance (Å)	Clash overlap (Å)
1:A:36:LYS:HD3	1:A:163:TYR:OH	2.01	0.61
1:A:57:THR:CG2	1:A:183:HIS:HE1	2.14	0.61
1:C:51:VAL:HG13	1:C:106:PRO:HG3	1.83	0.61
1:F:159:LEU:O	1:F:160:ARG:HD2	2.01	0.59
1:B:16:LEU:CD2	1:B:191:ILE:HB	2.33	0.59
1:F:40:ASP:HA	1:F:76:ILE:HG13	1.86	0.57
1:E:39:LEU:HD21	1:E:50:VAL:CG2	2.34	0.57
1:C:41:ASP:HB3	1:C:42:PRO:HD2	1.87	0.56
1:E:110:ILE:HD12	1:E:141:PRO:HG3	1.87	0.56
1:D:177:HIS:HB2	1:D:190:VAL:CG2	2.35	0.56
1:A:174:GLU:HG2	1:A:193:ARG:HB2	1.89	0.55
1:E:173:SER:OG	1:E:193:ARG:NH1	2.39	0.55
1:A:159:LEU:O	1:A:160:ARG:HD2	2.08	0.53
1:D:43:VAL:HG12	1:D:44:GLY:N	2.23	0.53
1:B:182:GLU:HB3	1:D:77:HIS:ND1	2.24	0.53
1:D:88:TYR:CZ	1:D:134:ALA:HA	2.43	0.53
1:A:90:ASP:CB	1:B:140:ARG:HH22	2.21	0.53
1:E:90:ASP:HB3	1:F:140:ARG:HH22	1.74	0.53
1:D:119:ASP:O	1:D:148:VAL:HA	2.07	0.53
1:E:88:TYR:CZ	1:E:134:ALA:HA	2.44	0.52
1:A:90:ASP:HB3	1:B:140:ARG:HH22	1.74	0.52
1:F:16:LEU:CD1	1:F:191:ILE:HG22	2.38	0.52
1:B:119:ASP:O	1:B:148:VAL:HA	2.09	0.52
1:D:177:HIS:HB2	1:D:190:VAL:HG22	1.90	0.52
1:F:65:ARG:NH1	1:F:182:GLU:OE1	2.42	0.52
1:D:179:ARG:HH11	1:D:179:ARG:HG3	1.74	0.52
1:E:129:ARG:HD3	3:E:317:HOH:O	2.10	0.51
1:A:191:ILE:HD13	1:A:192:SER:N	2.24	0.51
1:E:152:ARG:NH2	1:E:174:GLU:O	2.31	0.51
1:E:159:LEU:HD23	1:F:159:LEU:CD2	2.41	0.50
1:A:129:ARG:NH1	3:A:403:HOH:O	2.45	0.49
1:C:43:VAL:HG23	1:C:47:ALA:O	2.12	0.49
1:E:152:ARG:HG2	1:E:170:THR:OG1	2.12	0.49
1:C:76:ILE:HD12	1:C:76:ILE:N	2.28	0.49
1:D:16:LEU:HD11	1:D:191:ILE:HG22	1.94	0.49
1:E:152:ARG:HG2	1:E:152:ARG:O	2.12	0.49
1:B:177:HIS:HB2	1:B:190:VAL:CG2	2.43	0.49
1:F:181:ARG:HG3	1:F:182:GLU:N	2.28	0.49
1:E:65:ARG:NH2	1:E:181:ARG:HG2	2.29	0.48
1:F:12:GLU:O	1:F:192:SER:HA	2.14	0.48
1:E:140:ARG:HB3	3:E:312:HOH:O	2.14	0.47

*Continued on next page...*

*Continued from previous page...*

Atom-1	Atom-2	Interatomic distance (Å)	Clash overlap (Å)
1:A:155:ARG:NH2	1:B:162:ASP:OD2	2.34	0.47
1:D:14:ARG:HG3	1:D:191:ILE:HG22	1.96	0.47
1:D:179:ARG:HG3	1:D:179:ARG:NH1	2.30	0.47
1:B:43:VAL:HG11	1:E:185:GLY:O	2.15	0.47
1:E:181:ARG:HG3	1:E:182:GLU:N	2.30	0.47
1:D:16:LEU:CD2	1:D:168:VAL:HG11	2.44	0.47
1:E:39:LEU:HD21	1:E:50:VAL:HB	1.97	0.46
1:E:12:GLU:O	1:E:192:SER:HA	2.15	0.46
1:E:119:ASP:O	1:E:148:VAL:HA	2.16	0.46
1:C:159:LEU:CD2	1:D:159:LEU:HD23	2.41	0.46
1:D:43:VAL:O	1:D:47:ALA:HB3	2.16	0.46
1:D:56:PRO:HA	1:D:57:THR:HA	1.55	0.46
1:A:150:VAL:HG11	1:A:176:VAL:HG11	1.98	0.46
1:B:177:HIS:HB2	1:B:190:VAL:HG22	1.96	0.46
1:E:110:ILE:HD12	1:E:135:LEU:HD21	1.98	0.45
1:F:41:ASP:O	1:F:43:VAL:N	2.47	0.45
1:A:85:ILE:HD11	1:A:89:ARG:NH2	2.31	0.45
1:F:56:PRO:HA	1:F:57:THR:HA	1.48	0.45
1:A:159:LEU:CD2	1:B:159:LEU:HD23	2.39	0.45
1:C:85:ILE:HD11	1:C:89:ARG:HH21	1.82	0.45
1:D:88:TYR:CD1	1:D:134:ALA:HB2	2.52	0.45
1:E:45:PRO:O	1:E:142:ARG:NH1	2.49	0.45
1:E:48:PRO:HB3	1:E:142:ARG:NH1	2.32	0.45
1:D:52:LEU:O	1:D:80:HIS:HA	2.17	0.44
1:E:135:LEU:HD23	1:E:135:LEU:O	2.18	0.44
1:D:16:LEU:CD1	1:D:191:ILE:HG22	2.47	0.44
1:E:16:LEU:HD13	1:E:168:VAL:HG11	1.99	0.44
1:E:52:LEU:O	1:E:80:HIS:HA	2.18	0.43
1:F:177:HIS:HB2	1:F:190:VAL:CG2	2.48	0.43
1:A:56:PRO:HA	1:A:57:THR:HA	1.44	0.43
1:C:56:PRO:HA	1:C:57:THR:HA	1.48	0.43
1:E:179:ARG:O	1:E:187:ASP:HA	2.19	0.43
1:E:56:PRO:HA	1:E:57:THR:HA	1.53	0.43
1:A:83:LEU:HD22	1:A:135:LEU:HD13	2.01	0.43
1:B:114:LEU:C	1:B:114:LEU:HD22	2.40	0.42
1:E:16:LEU:CD1	1:E:168:VAL:HG11	2.48	0.42
1:C:88:TYR:CE2	1:C:134:ALA:HA	2.55	0.42
1:E:37:THR:OG1	1:E:39:LEU:HG	2.19	0.42
1:E:88:TYR:CE2	1:E:134:ALA:HA	2.54	0.42
1:F:161:ALA:HB3	1:F:164:VAL:HG22	2.01	0.42
1:D:114:LEU:C	1:D:114:LEU:HD22	2.40	0.42

*Continued on next page...*

Continued from previous page...

Atom-1	Atom-2	Interatomic distance (Å)	Clash overlap (Å)
1:F:177:HIS:HB2	1:F:190:VAL:HG22	2.02	0.42
1:B:40:ASP:HA	1:B:76:ILE:HG13	2.00	0.42
1:A:183:HIS:HD2	1:A:184:ASP:OD1	2.02	0.41
1:D:36:LYS:HD3	1:D:163:TYR:OH	2.20	0.41
1:F:119:ASP:O	1:F:148:VAL:HA	2.20	0.41
1:B:89:ARG:HG2	3:B:328:HOH:O	2.20	0.41
1:A:39:LEU:HD12	1:A:40:ASP:N	2.36	0.41
1:A:65:ARG:NH2	1:A:187:ASP:OD1	2.52	0.41
1:C:52:LEU:CD2	1:C:116:ILE:HB	2.51	0.41
1:C:52:LEU:O	1:C:80:HIS:HA	2.21	0.41
1:F:36:LYS:HD3	1:F:163:TYR:OH	2.21	0.41
1:D:41:ASP:HB2	1:D:42:PRO:HD2	2.03	0.40
1:F:135:LEU:HD23	1:F:135:LEU:HA	1.98	0.40
1:B:39:LEU:HD12	1:B:40:ASP:N	2.36	0.40

There are no symmetry-related clashes.

## 5.3 Torsion angles [i](#)

### 5.3.1 Protein backbone [i](#)

In the following table, the Percentiles column shows the percent Ramachandran outliers of the chain as a percentile score with respect to all X-ray entries followed by that with respect to entries of similar resolution.

The Analysed column shows the number of residues for which the backbone conformation was analysed, and the total number of residues.

Mol	Chain	Analysed	Favoured	Allowed	Outliers	Percentiles	
1	A	167/199 (84%)	165 (99%)	2 (1%)	0	100	100
1	B	167/199 (84%)	164 (98%)	3 (2%)	0	100	100
1	C	167/199 (84%)	164 (98%)	1 (1%)	2 (1%)	13	27
1	D	167/199 (84%)	165 (99%)	1 (1%)	1 (1%)	25	47
1	E	167/199 (84%)	166 (99%)	1 (1%)	0	100	100
1	F	167/199 (84%)	164 (98%)	1 (1%)	2 (1%)	13	27
All	All	1002/1194 (84%)	988 (99%)	9 (1%)	5 (0%)	29	52

All (5) Ramachandran outliers are listed below:

Mol	Chain	Res	Type
1	D	43	VAL
1	C	43	VAL
1	F	43	VAL
1	C	42	PRO
1	F	42	PRO

### 5.3.2 Protein sidechains [i](#)

In the following table, the Percentiles column shows the percent sidechain outliers of the chain as a percentile score with respect to all X-ray entries followed by that with respect to entries of similar resolution.

The Analysed column shows the number of residues for which the sidechain conformation was analysed, and the total number of residues.

Mol	Chain	Analysed	Rotameric	Outliers	Percentiles	
1	A	140/160 (88%)	138 (99%)	2 (1%)	67	85
1	B	140/160 (88%)	137 (98%)	3 (2%)	53	77
1	C	140/160 (88%)	139 (99%)	1 (1%)	84	94
1	D	140/160 (88%)	137 (98%)	3 (2%)	53	77
1	E	140/160 (88%)	137 (98%)	3 (2%)	53	77
1	F	140/160 (88%)	137 (98%)	3 (2%)	53	77
All	All	840/960 (88%)	825 (98%)	15 (2%)	59	80

All (15) residues with a non-rotameric sidechain are listed below:

Mol	Chain	Res	Type
1	A	129	ARG
1	A	191	ILE
1	B	16	LEU
1	B	114	LEU
1	B	129	ARG
1	C	40	ASP
1	D	114	LEU
1	D	123	TYR
1	D	135	LEU
1	E	40	ASP
1	E	152	ARG
1	E	183	HIS
1	F	43	VAL
1	F	65	ARG

*Continued on next page...*

*Continued from previous page...*

Mol	Chain	Res	Type
1	F	171	SER

Sometimes sidechains can be flipped to improve hydrogen bonding and reduce clashes. All (1) such sidechains are listed below:

Mol	Chain	Res	Type
1	A	183	HIS

### 5.3.3 RNA [i](#)

There are no RNA molecules in this entry.

## 5.4 Non-standard residues in protein, DNA, RNA chains [i](#)

There are no non-standard protein/DNA/RNA residues in this entry.

## 5.5 Carbohydrates [i](#)

There are no monosaccharides in this entry.

## 5.6 Ligand geometry [i](#)

3 ligands are modelled in this entry.

In the following table, the Counts columns list the number of bonds (or angles) for which Mogul statistics could be retrieved, the number of bonds (or angles) that are observed in the model and the number of bonds (or angles) that are defined in the Chemical Component Dictionary. The Link column lists molecule types, if any, to which the group is linked. The Z score for a bond length (or angle) is the number of standard deviations the observed value is removed from the expected value. A bond length (or angle) with  $|Z| > 2$  is considered an outlier worth inspection. RMSZ is the root-mean-square of all Z scores of the bond lengths (or angles).

Mol	Type	Chain	Res	Link	Bond lengths			Bond angles		
					Counts	RMSZ	# Z  > 2	Counts	RMSZ	# Z  > 2
2	URF	A	301	-	9,9,9	4.51	5 (55%)	12,12,12	3.88	7 (58%)
2	URF	F	301	-	9,9,9	4.47	5 (55%)	12,12,12	3.85	7 (58%)
2	URF	C	301	-	9,9,9	4.52	5 (55%)	12,12,12	3.95	7 (58%)

In the following table, the Chirals column lists the number of chiral outliers, the number of chiral centers analysed, the number of these observed in the model and the number defined in the



Chemical Component Dictionary. Similar counts are reported in the Torsion and Rings columns. '-' means no outliers of that kind were identified.

Mol	Type	Chain	Res	Link	Chirals	Torsions	Rings
2	URF	A	301	-	-	-	0/1/1/1
2	URF	F	301	-	-	-	0/1/1/1
2	URF	C	301	-	-	-	0/1/1/1

All (15) bond length outliers are listed below:

Mol	Chain	Res	Type	Atoms	Z	Observed(Å)	Ideal(Å)
2	C	301	URF	C6-C5	9.05	1.41	1.33
2	F	301	URF	C6-C5	8.89	1.41	1.33
2	A	301	URF	C6-C5	8.86	1.41	1.33
2	A	301	URF	C2-N1	7.29	1.46	1.36
2	F	301	URF	C2-N1	7.26	1.46	1.36
2	C	301	URF	C2-N1	7.08	1.46	1.36
2	A	301	URF	C2-N3	5.12	1.46	1.37
2	C	301	URF	C2-N3	5.05	1.46	1.37
2	F	301	URF	C2-N3	4.94	1.46	1.37
2	A	301	URF	C6-N1	3.62	1.42	1.36
2	C	301	URF	C6-N1	3.60	1.42	1.36
2	F	301	URF	C6-N1	3.56	1.42	1.36
2	C	301	URF	C4-C5	3.05	1.48	1.44
2	A	301	URF	C4-C5	2.75	1.47	1.44
2	F	301	URF	C4-C5	2.52	1.47	1.44

All (21) bond angle outliers are listed below:

Mol	Chain	Res	Type	Atoms	Z	Observed(°)	Ideal(°)
2	A	301	URF	C5-C4-N3	7.43	119.88	112.56
2	C	301	URF	C5-C4-N3	7.33	119.78	112.56
2	F	301	URF	C5-C4-N3	7.23	119.67	112.56
2	F	301	URF	O4-C4-C5	-6.39	119.95	125.72
2	A	301	URF	O4-C4-C5	-6.02	120.28	125.72
2	C	301	URF	F5-C5-C4	5.17	121.19	116.40
2	C	301	URF	O4-C4-C5	-4.93	121.27	125.72
2	A	301	URF	C4-N3-C2	-4.80	119.43	126.34
2	C	301	URF	C4-N3-C2	-4.75	119.49	126.34
2	F	301	URF	C4-N3-C2	-4.72	119.54	126.34
2	C	301	URF	N1-C2-N3	4.40	120.11	115.13
2	C	301	URF	F5-C5-C6	-4.33	118.67	121.73
2	A	301	URF	F5-C5-C4	4.25	120.34	116.40
2	F	301	URF	N1-C2-N3	4.23	119.92	115.13

*Continued on next page...*

*Continued from previous page...*

Mol	Chain	Res	Type	Atoms	Z	Observed(°)	Ideal(°)
2	A	301	URF	N1-C2-N3	4.18	119.86	115.13
2	F	301	URF	F5-C5-C4	4.02	120.12	116.40
2	F	301	URF	F5-C5-C6	-3.44	119.30	121.73
2	A	301	URF	F5-C5-C6	-3.33	119.37	121.73
2	C	301	URF	C6-N1-C2	-3.10	119.52	122.68
2	F	301	URF	C6-N1-C2	-2.94	119.68	122.68
2	A	301	URF	C6-N1-C2	-2.92	119.70	122.68

There are no chirality outliers.

There are no torsion outliers.

There are no ring outliers.

1 monomer is involved in 1 short contact:

Mol	Chain	Res	Type	Clashes	Symm-Clashes
2	F	301	URF	1	0

## 5.7 Other polymers [i](#)

There are no such residues in this entry.

## 5.8 Polymer linkage issues [i](#)

There are no chain breaks in this entry.

## 6 Fit of model and data [i](#)

### 6.1 Protein, DNA and RNA chains [i](#)

In the following table, the column labelled ‘#RSRZ > 2’ contains the number (and percentage) of RSRZ outliers, followed by percent RSRZ outliers for the chain as percentile scores relative to all X-ray entries and entries of similar resolution. The OWAB column contains the minimum, median, 95<sup>th</sup> percentile and maximum values of the occupancy-weighted average B-factor per residue. The column labelled ‘Q < 0.9’ lists the number of (and percentage) of residues with an average occupancy less than 0.9.

Mol	Chain	Analysed	<RSRZ>	#RSRZ>2	OWAB(Å <sup>2</sup> )	Q<0.9
1	A	171/199 (85%)	-0.20	4 (2%) 60 54	20, 29, 56, 97	0
1	B	171/199 (85%)	-0.04	8 (4%) 31 25	22, 32, 69, 103	0
1	C	171/199 (85%)	0.03	8 (4%) 31 25	19, 29, 67, 102	0
1	D	171/199 (85%)	0.09	12 (7%) 16 12	20, 32, 69, 110	0
1	E	171/199 (85%)	0.01	9 (5%) 26 20	20, 32, 66, 105	0
1	F	171/199 (85%)	-0.15	7 (4%) 37 30	21, 29, 68, 94	0
All	All	1026/1194 (85%)	-0.04	48 (4%) 31 25	19, 31, 68, 110	0

All (48) RSRZ outliers are listed below:

Mol	Chain	Res	Type	RSRZ
1	D	44	GLY	7.3
1	D	45	PRO	6.2
1	B	45	PRO	6.1
1	B	90	ASP	5.2
1	D	43	VAL	5.0
1	C	45	PRO	4.9
1	E	12	GLU	4.7
1	B	193	ARG	4.5
1	D	47	ALA	4.4
1	D	90	ASP	4.4
1	D	46	ASP	4.3
1	B	43	VAL	4.2
1	C	42	PRO	4.2
1	A	45	PRO	4.2
1	D	42	PRO	4.0
1	B	44	GLY	3.9
1	C	44	GLY	3.8
1	F	45	PRO	3.8
1	E	193	ARG	3.8

*Continued on next page...*

*Continued from previous page...*

Mol	Chain	Res	Type	RSRZ
1	D	193	ARG	3.8
1	E	87	LEU	3.6
1	A	193	ARG	3.5
1	C	12	GLU	3.1
1	C	46	ASP	3.1
1	C	193	ARG	3.1
1	E	46	ASP	3.0
1	F	193	ARG	3.0
1	C	47	ALA	3.0
1	C	43	VAL	3.0
1	F	172	ARG	3.0
1	E	13	SER	2.9
1	E	45	PRO	2.9
1	F	43	VAL	2.7
1	A	46	ASP	2.7
1	B	42	PRO	2.6
1	F	46	ASP	2.6
1	D	12	GLU	2.6
1	E	192	SER	2.5
1	F	42	PRO	2.5
1	E	190	VAL	2.4
1	D	108	GLY	2.3
1	B	12	GLU	2.2
1	D	14	ARG	2.2
1	D	172	ARG	2.2
1	E	186	ARG	2.1
1	A	12	GLU	2.1
1	B	103	THR	2.1
1	F	90	ASP	2.0

## 6.2 Non-standard residues in protein, DNA, RNA chains [i](#)

There are no non-standard protein/DNA/RNA residues in this entry.

## 6.3 Carbohydrates [i](#)

There are no monosaccharides in this entry.

## 6.4 Ligands

In the following table, the Atoms column lists the number of modelled atoms in the group and the number defined in the chemical component dictionary. The B-factors column lists the minimum, median, 95<sup>th</sup> percentile and maximum values of B factors of atoms in the group. The column labelled 'Q< 0.9' lists the number of atoms with occupancy less than 0.9.

Mol	Type	Chain	Res	Atoms	RSCC	RSR	B-factors(Å <sup>2</sup> )	Q<0.9
2	URF	A	301	9/9	0.88	0.19	50,57,79,95	0
2	URF	C	301	9/9	0.88	0.23	48,58,85,86	0
2	URF	F	301	9/9	0.89	0.30	51,64,78,81	0

## 6.5 Other polymers

There are no such residues in this entry.