



Full wwPDB X-ray Structure Validation Report ⓘ

Aug 27, 2023 – 08:50 AM EDT

PDB ID : 3IAI
Title : Crystal structure of the catalytic domain of the tumor-associated human carbonic anhydrase IX
Authors : Alterio, V.; Di Fiore, A.; De Simone, G.
Deposited on : 2009-07-14
Resolution : 2.20 Å(reported)

This is a Full wwPDB X-ray Structure Validation Report for a publicly released PDB entry.

We welcome your comments at validation@mail.wwpdb.org

A user guide is available at

<https://www.wwpdb.org/validation/2017/XrayValidationReportHelp>

with specific help available everywhere you see the ⓘ symbol.

The types of validation reports are described at

<http://www.wwpdb.org/validation/2017/FAQs#types>.

The following versions of software and data (see [references ⓘ](#)) were used in the production of this report:

MolProbity : 4.02b-467
Mogul : 1.8.5 (274361), CSD as541be (2020)
Xtriage (Phenix) : 1.13
EDS : 2.35
Percentile statistics : 20191225.v01 (using entries in the PDB archive December 25th 2019)
Refmac : 5.8.0158
CCP4 : 7.0.044 (Gargrove)
Ideal geometry (proteins) : Engh & Huber (2001)
Ideal geometry (DNA, RNA) : Parkinson et al. (1996)
Validation Pipeline (wwPDB-VP) : 2.35

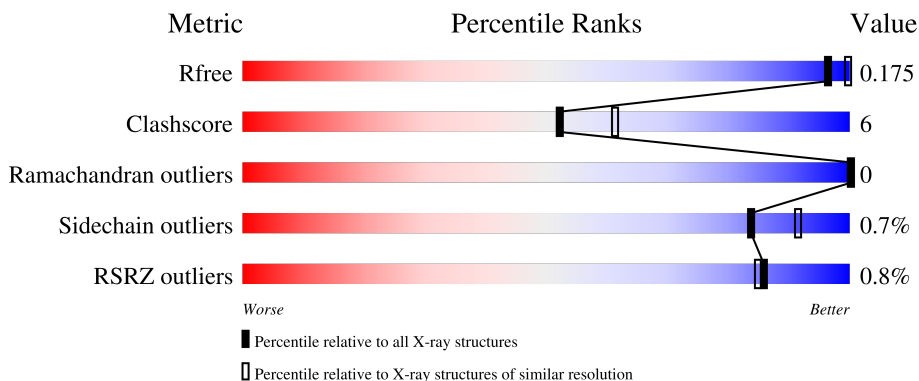
1 Overall quality at a glance i

The following experimental techniques were used to determine the structure:

X-RAY DIFFRACTION

The reported resolution of this entry is 2.20 Å.

Percentile scores (ranging between 0-100) for global validation metrics of the entry are shown in the following graphic. The table shows the number of entries on which the scores are based.



Metric	Whole archive (#Entries)	Similar resolution (#Entries, resolution range(Å))
R_{free}	130704	4898 (2.20-2.20)
Clashscore	141614	5594 (2.20-2.20)
Ramachandran outliers	138981	5503 (2.20-2.20)
Sidechain outliers	138945	5504 (2.20-2.20)
RSRZ outliers	127900	4800 (2.20-2.20)

The table below summarises the geometric issues observed across the polymeric chains and their fit to the electron density. The red, orange, yellow and green segments of the lower bar indicate the fraction of residues that contain outliers for ≥ 3 , 2, 1 and 0 types of geometric quality criteria respectively. A grey segment represents the fraction of residues that are not modelled. The numeric value for each fraction is indicated below the corresponding segment, with a dot representing fractions $\leq 5\%$. The upper red bar (where present) indicates the fraction of residues that have poor fit to the electron density. The numeric value is given above the bar.

Mol	Chain	Length	Quality of chain
1	A	257	91% 9%
1	B	257	85% 12% ..
1	C	257	88% 10% .
1	D	257	87% 11% .
2	E	5	20% 60% 20%

Continued on next page...

Continued from previous page...

Mol	Chain	Length	Quality of chain
2	F	5	
2	G	5	
2	H	5	

The following table lists non-polymeric compounds, carbohydrate monomers and non-standard residues in protein, DNA, RNA chains that are outliers for geometric or electron-density-fit criteria:

Mol	Type	Chain	Res	Chirality	Geometry	Clashes	Electron density
2	BMA	E	3	-	-	-	X
2	MAN	E	4	-	-	-	X
2	MAN	E	5	-	-	-	X
2	BMA	F	3	-	-	-	X
2	MAN	F	4	-	-	-	X
2	MAN	F	5	-	-	-	X
2	BMA	G	3	-	-	-	X
2	MAN	G	4	-	-	-	X
2	MAN	G	5	-	-	-	X
2	BMA	H	3	-	-	-	X
2	MAN	H	4	-	-	-	X
2	MAN	H	5	-	-	-	X
5	GOL	A	300	-	X	-	-
5	GOL	A	302	-	X	-	-
5	GOL	A	303	-	X	-	-
5	GOL	A	304	-	X	-	-
5	GOL	A	305	-	X	-	-
5	GOL	A	307	-	X	-	-
5	GOL	B	300	-	X	-	-
5	GOL	B	302	-	X	-	-
5	GOL	B	303	-	X	-	-
5	GOL	B	304	-	X	-	-
5	GOL	B	306	-	X	-	-
5	GOL	C	300	-	X	-	-
5	GOL	C	302	-	X	-	-
5	GOL	C	303	-	X	-	-
5	GOL	C	304	-	X	-	-
5	GOL	D	300	-	X	-	-
5	GOL	D	302	-	X	-	-
5	GOL	D	303	-	X	-	-
5	GOL	D	304	-	X	-	-
5	GOL	D	306	-	X	-	-

Continued on next page...

Continued from previous page...

Mol	Type	Chain	Res	Chirality	Geometry	Clashes	Electron density
5	GOL	D	307	-	X	-	-
6	TRS	A	501	-	X	-	-
6	TRS	B	501	-	X	-	-
6	TRS	C	501	-	X	-	-
6	TRS	D	501	-	X	-	-

2 Entry composition i

There are 8 unique types of molecules in this entry. The entry contains 10134 atoms, of which 0 are hydrogens and 0 are deuteriums.

In the tables below, the ZeroOcc column contains the number of atoms modelled with zero occupancy, the AltConf column contains the number of residues with at least one atom in alternate conformation and the Trace column contains the number of residues modelled with at most 2 atoms.

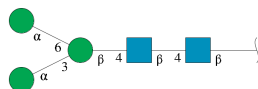
- Molecule 1 is a protein called Carbonic anhydrase 9.

Mol	Chain	Residues	Atoms					ZeroOcc	AltConf	Trace
			Total	C	N	O	S			
1	A	257	Total	C	N	O	S	0	2	0
			2006	1272	357	373	4			
1	B	252	Total	C	N	O	S	0	3	0
			1985	1261	357	363	4			
1	C	252	Total	C	N	O	S	0	2	0
			1977	1257	353	363	4			
1	D	253	Total	C	N	O	S	0	4	0
			1997	1267	356	370	4			

There are 12 discrepancies between the modelled and reference sequences:

Chain	Residue	Modelled	Actual	Comment	Reference
A	0	GLY	-	expression tag	UNP Q16790
A	0A	PRO	-	expression tag	UNP Q16790
A	41	SER	CYS	engineered mutation	UNP Q16790
B	-1	GLY	-	expression tag	UNP Q16790
B	0	PRO	-	expression tag	UNP Q16790
B	41	SER	CYS	engineered mutation	UNP Q16790
C	-1	GLY	-	expression tag	UNP Q16790
C	0	PRO	-	expression tag	UNP Q16790
C	41	SER	CYS	engineered mutation	UNP Q16790
D	-1	GLY	-	expression tag	UNP Q16790
D	0	PRO	-	expression tag	UNP Q16790
D	41	SER	CYS	engineered mutation	UNP Q16790

- Molecule 2 is an oligosaccharide called alpha-D-mannopyranose-(1-3)-[alpha-D-mannopyranose-(1-6)]beta-D-mannopyranose-(1-4)-2-acetamido-2-deoxy-beta-D-glucopyranose-(1-4)-2-acetamido-2-deoxy-beta-D-glucopyranose.

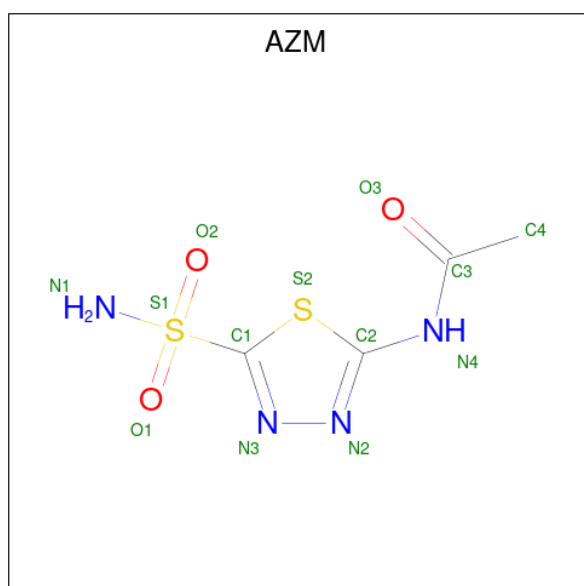


Mol	Chain	Residues	Atoms				ZeroOcc	AltConf	Trace
2	E	5	Total	C	N	O	0	0	0
			61	34	2	25			
2	F	5	Total	C	N	O	0	0	0
			61	34	2	25			
2	G	5	Total	C	N	O	0	0	0
			61	34	2	25			
2	H	5	Total	C	N	O	0	0	0
			61	34	2	25			

- Molecule 3 is ZINC ION (three-letter code: ZN) (formula: Zn).

Mol	Chain	Residues	Atoms		ZeroOcc	AltConf
3	A	1	Total	Zn	0	0
			1	1		
3	B	1	Total	Zn	0	0
			1	1		
3	C	1	Total	Zn	0	0
			1	1		
3	D	1	Total	Zn	0	0
			1	1		

- Molecule 4 is 5-ACETAMIDO-1,3,4-THIADIAZOLE-2-SULFONAMIDE (three-letter code: AZM) (formula: C₄H₆N₄O₃S₂).



Mol	Chain	Residues	Atoms					ZeroOcc	AltConf
4	A	1	Total	C	N	O	S	0	0
			13	4	4	3	2		

Continued on next page...

Continued from previous page...

Mol	Chain	Residues	Atoms					ZeroOcc	AltConf
4	B	1	Total	C	N	O	S	0	0
			13	4	4	3	2		
4	C	1	Total	C	N	O	S	0	0
			13	4	4	3	2		
4	D	1	Total	C	N	O	S	0	0
			13	4	4	3	2		

- Molecule 5 is GLYCEROL (three-letter code: GOL) (formula: $C_3H_8O_3$).



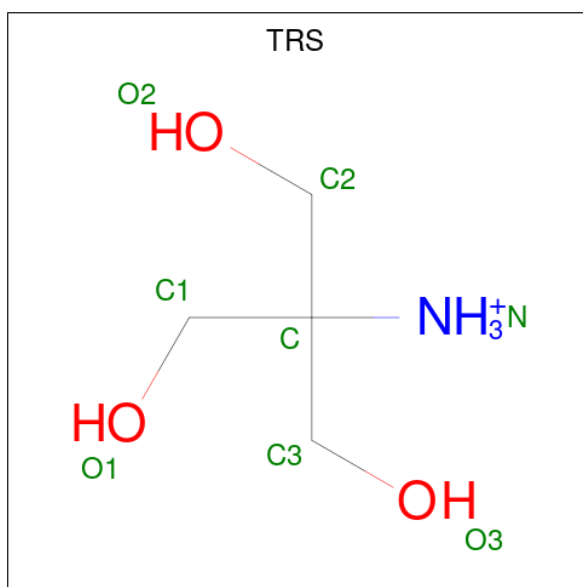
Mol	Chain	Residues	Atoms			ZeroOcc	AltConf
5	A	1	Total	C	O	0	0
			6	3	3		
5	A	1	Total	C	O	0	0
			6	3	3		
5	A	1	Total	C	O	0	0
			6	3	3		
5	A	1	Total	C	O	0	0
			6	3	3		
5	A	1	Total	C	O	0	0
			6	3	3		
5	A	1	Total	C	O	0	0
			6	3	3		
5	B	1	Total	C	O	0	0
			6	3	3		

Continued on next page...

Continued from previous page...

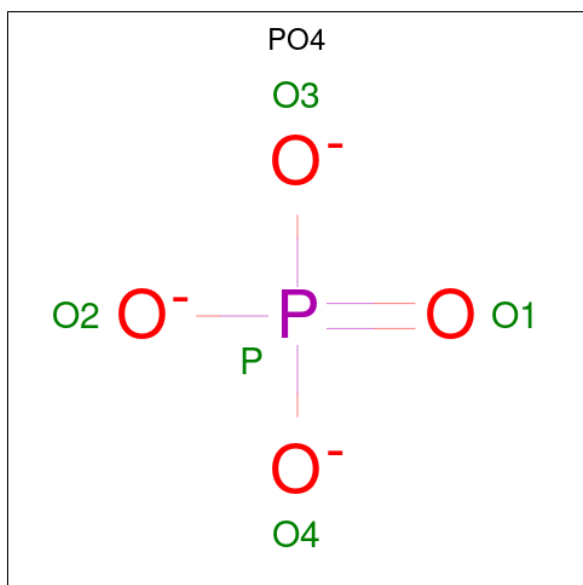
Mol	Chain	Residues	Atoms			ZeroOcc	AltConf
5	B	1	Total	C	O	0	0
			6	3	3		
5	B	1	Total	C	O	0	0
			6	3	3		
5	B	1	Total	C	O	0	0
			6	3	3		
5	B	1	Total	C	O	0	0
			6	3	3		
5	B	1	Total	C	O	0	0
			6	3	3		
5	C	1	Total	C	O	0	0
			6	3	3		
5	C	1	Total	C	O	0	0
			6	3	3		
5	C	1	Total	C	O	0	0
			6	3	3		
5	C	1	Total	C	O	0	0
			6	3	3		
5	C	1	Total	C	O	0	0
			6	3	3		
5	D	1	Total	C	O	0	0
			6	3	3		
5	D	1	Total	C	O	0	0
			6	3	3		
5	D	1	Total	C	O	0	0
			6	3	3		
5	D	1	Total	C	O	0	0
			6	3	3		
5	D	1	Total	C	O	0	0
			6	3	3		

- Molecule 6 is 2-AMINO-2-HYDROXYMETHYL-PROPANE-1,3-DIOL (three-letter code: TRS) (formula: C₄H₁₂NO₃).



Mol	Chain	Residues	Atoms				ZeroOcc	AltConf
			Total	C	N	O		
6	A	1	8	4	1	3	0	0
6	B	1	8	4	1	3	0	0
6	C	1	8	4	1	3	0	0
6	D	1	8	4	1	3	0	0

- Molecule 7 is PHOSPHATE ION (three-letter code: PO4) (formula: O₄P).



Mol	Chain	Residues	Atoms			ZeroOcc	AltConf
7	A	1	Total	O	P	0	0
			5	4	1		
7	A	1	Total	O	P	0	0
			5	4	1		
7	B	1	Total	O	P	0	0
			5	4	1		
7	C	1	Total	O	P	0	0
			5	4	1		
7	D	1	Total	O	P	0	0
			5	4	1		

- Molecule 8 is water.

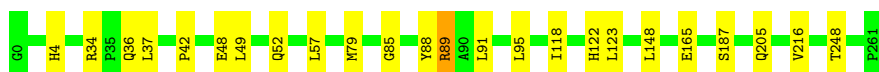
Mol	Chain	Residues	Atoms		ZeroOcc	AltConf
8	A	430	Total	O	0	0
			430	430		
8	B	407	Total	O	0	0
			407	407		
8	C	416	Total	O	0	0
			416	416		
8	D	409	Total	O	0	0
			409	409		

3 Residue-property plots


These plots are drawn for all protein, RNA, DNA and oligosaccharide chains in the entry. The first graphic for a chain summarises the proportions of the various outlier classes displayed in the second graphic. The second graphic shows the sequence view annotated by issues in geometry and electron density. Residues are color-coded according to the number of geometric quality criteria for which they contain at least one outlier: green = 0, yellow = 1, orange = 2 and red = 3 or more. A red dot above a residue indicates a poor fit to the electron density ($RSRZ > 2$). Stretches of 2 or more consecutive residues without any outlier are shown as a green connector. Residues present in the sample, but not in the model, are shown in grey.

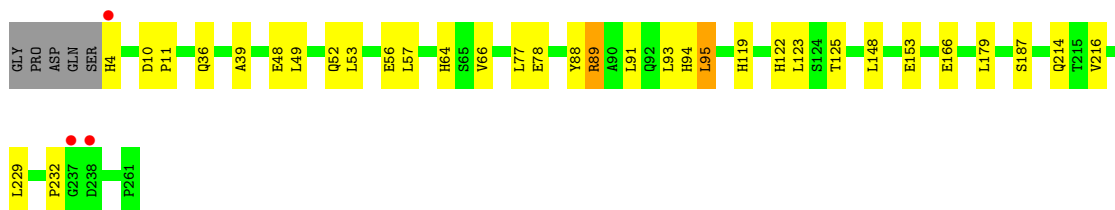
- Molecule 1: Carbonic anhydrase 9

Chain A:  91% 9%




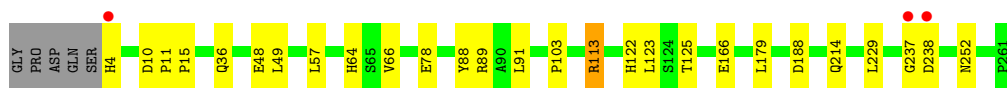
- Molecule 1: Carbonic anhydrase 9

Chain B:  85% 12% ..




- Molecule 1: Carbonic anhydrase 9

Chain C:  88% 10% .



- Molecule 1: Carbonic anhydrase 9

Chain D:  87% 11% .

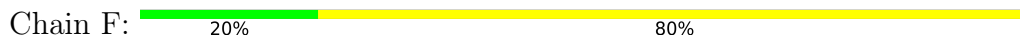


- Molecule 2: alpha-D-mannopyranose-(1-3)-[alpha-D-mannopyranose-(1-6)]beta-D-mannopyranose-(1-4)-2-acetamido-2-deoxy-beta-D-glucopyranose-(1-4)-2-acetamido-2-deoxy-beta-D-glucopyranose

Chain E:  20% 60% 20%



- Molecule 2: alpha-D-mannopyranose-(1-3)-[alpha-D-mannopyranose-(1-6)]beta-D-mannopyranose-(1-4)-2-acetamido-2-deoxy-beta-D-glucopyranose-(1-4)-2-acetamido-2-deoxy-beta-D-glucopyranose



- Molecule 2: alpha-D-mannopyranose-(1-3)-[alpha-D-mannopyranose-(1-6)]beta-D-mannopyranose-(1-4)-2-acetamido-2-deoxy-beta-D-glucopyranose-(1-4)-2-acetamido-2-deoxy-beta-D-glucopyranose



- Molecule 2: alpha-D-mannopyranose-(1-3)-[alpha-D-mannopyranose-(1-6)]beta-D-mannopyranose-(1-4)-2-acetamido-2-deoxy-beta-D-glucopyranose-(1-4)-2-acetamido-2-deoxy-beta-D-glucopyranose



4 Data and refinement statistics i

Property	Value	Source
Space group	P 61	Depositor
Cell constants a, b, c, α , β , γ	144.18Å 144.18Å 208.89Å 90.00° 90.00° 120.00°	Depositor
Resolution (Å)	20.00 – 2.20 19.99 – 2.20	Depositor EDS
% Data completeness (in resolution range)	96.6 (20.00-2.20) 96.9 (19.99-2.20)	Depositor EDS
R_{merge}	0.05	Depositor
R_{sym}	(Not available)	Depositor
$\langle I/\sigma(I) \rangle$ ¹	4.25 (at 2.21Å)	Xtrriage
Refinement program	CNS 1.1	Depositor
R, R_{free}	0.157 , 0.181 0.151 , 0.175	Depositor DCC
R_{free} test set	6214 reflections (5.05%)	wwPDB-VP
Wilson B-factor (Å ²)	19.7	Xtrriage
Anisotropy	0.377	Xtrriage
Bulk solvent k_{sol} (e/Å ³), B_{sol} (Å ²)	0.35 , 61.7	EDS
L-test for twinning ²	$\langle L \rangle = 0.49$, $\langle L^2 \rangle = 0.33$	Xtrriage
Estimated twinning fraction	0.032 for h,-h-k,-l	Xtrriage
F_o, F_c correlation	0.96	EDS
Total number of atoms	10134	wwPDB-VP
Average B, all atoms (Å ²)	24.0	wwPDB-VP

Xtrriage's analysis on translational NCS is as follows: *The largest off-origin peak in the Patterson function is 4.07% of the height of the origin peak. No significant pseudotranslation is detected.*

¹Intensities estimated from amplitudes.

²Theoretical values of $\langle |L| \rangle$, $\langle L^2 \rangle$ for acentric reflections are 0.5, 0.333 respectively for untwinned datasets, and 0.375, 0.2 for perfectly twinned datasets.

5 Model quality [i](#)

5.1 Standard geometry [i](#)

Bond lengths and bond angles in the following residue types are not validated in this section: GOL, TRS, BMA, AZM, ZN, NAG, PO4, MAN

The Z score for a bond length (or angle) is the number of standard deviations the observed value is removed from the expected value. A bond length (or angle) with $|Z| > 5$ is considered an outlier worth inspection. RMSZ is the root-mean-square of all Z scores of the bond lengths (or angles).

Mol	Chain	Bond lengths		Bond angles	
		RMSZ	# Z >5	RMSZ	# Z >5
1	A	0.33	0/2066	0.59	0/2822
1	B	0.31	0/2045	0.57	0/2792
1	C	0.32	0/2037	0.58	0/2781
1	D	0.33	0/2057	0.58	0/2808
All	All	0.32	0/8205	0.58	0/11203

There are no bond length outliers.

There are no bond angle outliers.

There are no chirality outliers.

There are no planarity outliers.

5.2 Too-close contacts [i](#)

In the following table, the Non-H and H(model) columns list the number of non-hydrogen atoms and hydrogen atoms in the chain respectively. The H(added) column lists the number of hydrogen atoms added and optimized by MolProbity. The Clashes column lists the number of clashes within the asymmetric unit, whereas Symm-Clashes lists symmetry-related clashes.

Mol	Chain	Non-H	H(model)	H(added)	Clashes	Symm-Clashes
1	A	2006	0	1943	23	0
1	B	1985	0	1928	26	0
1	C	1977	0	1916	20	0
1	D	1997	0	1928	20	0
2	E	61	0	52	1	0
2	F	61	0	52	0	0
2	G	61	0	52	1	0
2	H	61	0	52	2	0
3	A	1	0	0	0	0

Continued on next page...

Continued from previous page...

Mol	Chain	Non-H	H(model)	H(added)	Clashes	Symm-Clashes
3	B	1	0	0	0	0
3	C	1	0	0	0	0
3	D	1	0	0	0	0
4	A	13	0	6	0	0
4	B	13	0	6	0	0
4	C	13	0	6	0	0
4	D	13	0	6	0	0
5	A	42	0	49	2	0
5	B	36	0	42	2	0
5	C	30	0	35	1	0
5	D	42	0	49	4	0
6	A	8	0	9	0	0
6	B	8	0	9	0	0
6	C	8	0	9	1	0
6	D	8	0	9	1	0
7	A	10	0	0	0	0
7	B	5	0	0	0	0
7	C	5	0	0	0	0
7	D	5	0	0	0	0
8	A	430	0	0	8	0
8	B	407	0	0	6	0
8	C	416	0	0	3	0
8	D	409	0	0	3	0
All	All	10134	0	8158	92	0

The all-atom clashscore is defined as the number of clashes found per 1000 atoms (including hydrogen atoms). The all-atom clashscore for this structure is 6.

All (92) close contacts within the same asymmetric unit are listed below, sorted by their clash magnitude.

Atom-1	Atom-2	Interatomic distance (Å)	Clash overlap (Å)
1:D:222:GLN:HG2	5:D:306:GOL:H31	1.61	0.83
1:A:42:PRO:HG2	1:B:39:ALA:HB1	1.68	0.74
1:C:89:ARG:HG2	1:C:89:ARG:HH11	1.60	0.66
1:C:188:ASP:H	1:C:214:GLN:NE2	1.96	0.63
6:D:501:TRS:H21	2:H:1:NAG:HN2	1.65	0.61
1:A:89:ARG:HD3	8:A:1519:HOH:O	2.01	0.61
1:D:161:LEU:HB2	5:D:306:GOL:H11	1.83	0.60
1:A:89:ARG:HH11	1:A:89:ARG:HG3	1.66	0.60
1:A:248:THR:HG23	8:A:1019:HOH:O	2.02	0.57
1:B:4:HIS:CE1	1:B:64[B]:HIS:CE1	2.92	0.57

Continued on next page...

Continued from previous page...

Atom-1	Atom-2	Interatomic distance (Å)	Clash overlap (Å)
1:C:89:ARG:HG2	1:C:89:ARG:NH1	2.19	0.57
6:C:501:TRS:H32	2:G:1:NAG:HN2	1.69	0.57
1:A:4:HIS:HE1	8:A:693:HOH:O	1.88	0.57
1:A:52:GLN:NE2	8:A:1574:HOH:O	2.36	0.57
1:A:34:ARG:HH12	1:A:36:GLN:NE2	2.04	0.56
1:B:94:HIS:C	1:B:95:LEU:HD22	2.26	0.55
1:B:166:GLU:HG3	8:B:951:HOH:O	2.07	0.54
1:A:88:TYR:HB3	1:A:122:HIS:HB3	1.89	0.54
1:D:4:HIS:CE1	1:D:64[B]:HIS:CE1	2.97	0.53
1:D:36:GLN:NE2	8:D:1483:HOH:O	2.41	0.53
1:C:166:GLU:HG3	8:C:645:HOH:O	2.08	0.52
1:A:4:HIS:CD2	5:A:305:GOL:H32	2.45	0.52
1:B:36:GLN:NE2	8:B:1191:HOH:O	2.42	0.51
1:C:64[A]:HIS:CD2	5:C:300:GOL:H12	2.46	0.51
1:A:34:ARG:HH12	1:A:36:GLN:CD	2.14	0.50
1:C:237:GLY:O	1:C:238:ASP:C	2.49	0.50
1:A:165:GLU:HG2	8:A:1603:HOH:O	2.11	0.50
1:B:4:HIS:HE1	1:B:64[B]:HIS:CE1	2.30	0.50
1:D:158:GLU:HG2	5:D:306:GOL:H12	1.94	0.50
1:B:48:GLU:C	1:B:49:LEU:HD12	2.32	0.50
1:C:91:LEU:HD11	1:C:123:LEU:HB2	1.94	0.50
1:C:4:HIS:CE1	1:C:64[B]:HIS:CE1	3.00	0.49
1:D:48:GLU:C	1:D:49:LEU:HD12	2.32	0.49
1:D:188:ASP:H	1:D:214:GLN:NE2	2.11	0.49
1:B:88:TYR:HB3	1:B:122:HIS:HB3	1.95	0.48
1:B:148:LEU:HD22	1:B:216:VAL:CG2	2.43	0.48
1:B:52:GLN:NE2	8:B:541:HOH:O	2.46	0.48
1:D:58:ARG:NH2	1:D:173:GLU:OE1	2.41	0.48
1:A:89:ARG:HH11	1:A:89:ARG:CG	2.27	0.48
1:D:88:TYR:HB3	1:D:122:HIS:HB3	1.95	0.47
1:A:91:LEU:HD11	1:A:123:LEU:HB2	1.96	0.47
1:D:64[A]:HIS:CD2	5:D:300:GOL:H12	2.50	0.47
1:C:78:GLU:HG2	8:C:1601:HOH:O	2.14	0.47
1:B:78:GLU:HG2	8:B:1359:HOH:O	2.15	0.47
1:C:88:TYR:HB3	1:C:122:HIS:HB3	1.97	0.46
1:C:66:VAL:HB	1:C:229:LEU:HD11	1.97	0.46
1:C:103:PRO:HB2	1:C:113:ARG:HG2	1.96	0.46
1:B:91:LEU:HD11	1:B:123:LEU:HB2	1.97	0.46
1:B:95:LEU:HD22	1:B:95:LEU:N	2.31	0.46
1:D:10:ASP:HB3	1:D:11:PRO:HA	1.98	0.46
5:B:306:GOL:H11	8:B:805:HOH:O	2.16	0.45

Continued on next page...

Continued from previous page...

Atom-1	Atom-2	Interatomic distance (Å)	Clash overlap (Å)
1:A:85:GLY:HA2	1:D:52:GLN:HE22	1.82	0.45
1:A:48:GLU:C	1:A:49:LEU:HD12	2.37	0.45
1:D:66:VAL:HB	1:D:229:LEU:HD11	1.98	0.45
1:B:64[A]:HIS:CD2	5:B:300:GOL:H12	2.51	0.45
1:C:36:GLN:NE2	8:C:1329:HOH:O	2.49	0.45
2:E:3:BMA:H62	2:E:5:MAN:H5	1.99	0.45
1:D:93:LEU:HA	1:D:119:HIS:O	2.16	0.45
1:D:78:GLU:HG2	8:D:1572:HOH:O	2.17	0.44
1:A:205:GLN:NE2	8:A:1287:HOH:O	2.51	0.44
1:C:10:ASP:HB3	1:C:11:PRO:HA	2.00	0.44
1:A:36:GLN:HG2	8:A:814:HOH:O	2.16	0.44
1:C:48:GLU:C	1:C:49:LEU:HD12	2.37	0.44
1:C:89:ARG:HH12	1:C:125:THR:HA	1.83	0.44
1:B:232:PRO:HG2	8:B:1559:HOH:O	2.17	0.44
1:B:53:LEU:HD21	1:B:77:LEU:HD11	1.99	0.44
1:D:179:LEU:N	1:D:179:LEU:HD23	2.33	0.43
1:B:89:ARG:NH1	1:B:125:THR:HA	2.33	0.43
1:D:148:LEU:HD22	1:D:216:VAL:CG2	2.47	0.43
5:A:302:GOL:H32	8:A:1578:HOH:O	2.19	0.43
1:B:66:VAL:HB	1:B:229:LEU:HD11	2.01	0.43
1:A:187:SER:HB2	1:C:252:ASN:HA	2.01	0.43
1:B:93:LEU:HA	1:B:119:HIS:O	2.18	0.43
1:D:60:ARG:NH1	8:D:1437:HOH:O	2.51	0.42
1:C:57:LEU:HD12	1:C:57:LEU:N	2.35	0.42
1:D:53:LEU:HD21	1:D:77:LEU:HD11	2.01	0.42
1:C:179:LEU:N	1:C:179:LEU:HD23	2.34	0.42
1:A:36:GLN:HG3	1:A:37:LEU:HG	2.00	0.42
1:D:4:HIS:CE1	1:D:64[B]:HIS:HE1	2.38	0.42
1:A:48:GLU:O	1:A:79:MET:HA	2.19	0.41
1:B:4:HIS:CE1	1:B:64[B]:HIS:HE1	2.36	0.41
1:A:57:LEU:HD12	1:A:57:LEU:N	2.35	0.41
1:B:187[A]:SER:OG	1:B:214:GLN:NE2	2.52	0.41
1:B:56:GLU:C	1:B:57:LEU:HD12	2.41	0.41
1:A:148:LEU:HD22	1:A:216:VAL:CG2	2.51	0.41
1:C:11:PRO:HA	1:C:15:PRO:HD3	1.97	0.41
1:A:95:LEU:HD23	1:A:118:ILE:HA	2.02	0.40
1:B:179:LEU:N	1:B:179:LEU:HD23	2.36	0.40
2:H:3:BMA:H62	2:H:5:MAN:H5	2.03	0.40
1:B:10:ASP:HB3	1:B:11:PRO:HA	2.04	0.40

There are no symmetry-related clashes.

5.3 Torsion angles [i](#)

5.3.1 Protein backbone [i](#)

In the following table, the Percentiles column shows the percent Ramachandran outliers of the chain as a percentile score with respect to all X-ray entries followed by that with respect to entries of similar resolution.

The Analysed column shows the number of residues for which the backbone conformation was analysed, and the total number of residues.

Mol	Chain	Analysed	Favoured	Allowed	Outliers	Percentiles	
1	A	257/257 (100%)	252 (98%)	5 (2%)	0	100	100
1	B	253/257 (98%)	248 (98%)	5 (2%)	0	100	100
1	C	252/257 (98%)	245 (97%)	7 (3%)	0	100	100
1	D	255/257 (99%)	251 (98%)	4 (2%)	0	100	100
All	All	1017/1028 (99%)	996 (98%)	21 (2%)	0	100	100

There are no Ramachandran outliers to report.

5.3.2 Protein sidechains [i](#)

In the following table, the Percentiles column shows the percent sidechain outliers of the chain as a percentile score with respect to all X-ray entries followed by that with respect to entries of similar resolution.

The Analysed column shows the number of residues for which the sidechain conformation was analysed, and the total number of residues.

Mol	Chain	Analysed	Rotameric	Outliers	Percentiles	
1	A	212/210 (101%)	211 (100%)	1 (0%)	88	94
1	B	209/210 (100%)	206 (99%)	3 (1%)	67	80
1	C	208/210 (99%)	207 (100%)	1 (0%)	88	94
1	D	211/210 (100%)	210 (100%)	1 (0%)	88	94
All	All	840/840 (100%)	834 (99%)	6 (1%)	84	91

All (6) residues with a non-rotameric sidechain are listed below:

Mol	Chain	Res	Type
1	A	89	ARG
1	B	89	ARG

Continued on next page...

Continued from previous page...

Mol	Chain	Res	Type
1	B	95	LEU
1	B	153	GLU
1	C	113	ARG
1	D	89	ARG

Sometimes sidechains can be flipped to improve hydrogen bonding and reduce clashes. All (13) such sidechains are listed below:

Mol	Chain	Res	Type
1	A	4	HIS
1	A	36	GLN
1	A	52	GLN
1	A	64	HIS
1	A	214	GLN
1	B	4	HIS
1	B	36	GLN
1	B	214	GLN
1	B	224	HIS
1	C	36	GLN
1	C	214	GLN
1	D	52	GLN
1	D	214	GLN

5.3.3 RNA [i](#)

There are no RNA molecules in this entry.

5.4 Non-standard residues in protein, DNA, RNA chains [i](#)

There are no non-standard protein/DNA/RNA residues in this entry.

5.5 Carbohydrates [i](#)

20 monosaccharides are modelled in this entry.

In the following table, the Counts columns list the number of bonds (or angles) for which Mogul statistics could be retrieved, the number of bonds (or angles) that are observed in the model and the number of bonds (or angles) that are defined in the Chemical Component Dictionary. The Link column lists molecule types, if any, to which the group is linked. The Z score for a bond length (or angle) is the number of standard deviations the observed value is removed from the

expected value. A bond length (or angle) with $|Z| > 2$ is considered an outlier worth inspection. RMSZ is the root-mean-square of all Z scores of the bond lengths (or angles).

Mol	Type	Chain	Res	Link	Bond lengths			Bond angles		
					Counts	RMSZ	# Z > 2	Counts	RMSZ	# Z > 2
2	NAG	E	1	2,1	14,14,15	1.78	1 (7%)	17,19,21	0.85	0
2	NAG	E	2	2	14,14,15	0.77	0	17,19,21	0.73	0
2	BMA	E	3	2	11,11,12	1.20	0	15,15,17	0.71	0
2	MAN	E	4	2	11,11,12	1.24	1 (9%)	15,15,17	1.29	1 (6%)
2	MAN	E	5	2	11,11,12	1.40	2 (18%)	15,15,17	2.00	3 (20%)
2	NAG	F	1	2,1	14,14,15	1.77	2 (14%)	17,19,21	0.87	0
2	NAG	F	2	2	14,14,15	0.83	0	17,19,21	0.74	0
2	BMA	F	3	2	11,11,12	1.22	1 (9%)	15,15,17	0.72	0
2	MAN	F	4	2	11,11,12	1.19	1 (9%)	15,15,17	1.10	1 (6%)
2	MAN	F	5	2	11,11,12	1.37	2 (18%)	15,15,17	2.14	3 (20%)
2	NAG	G	1	2,1	14,14,15	1.76	1 (7%)	17,19,21	0.87	0
2	NAG	G	2	2	14,14,15	0.80	0	17,19,21	0.72	0
2	BMA	G	3	2	11,11,12	1.20	0	15,15,17	0.68	0
2	MAN	G	4	2	11,11,12	1.18	0	15,15,17	1.17	1 (6%)
2	MAN	G	5	2	11,11,12	1.37	2 (18%)	15,15,17	2.14	3 (20%)
2	NAG	H	1	2,1	14,14,15	1.73	1 (7%)	17,19,21	0.86	0
2	NAG	H	2	2	14,14,15	0.88	0	17,19,21	0.75	0
2	BMA	H	3	2	11,11,12	1.29	1 (9%)	15,15,17	0.63	0
2	MAN	H	4	2	11,11,12	1.17	1 (9%)	15,15,17	1.27	1 (6%)
2	MAN	H	5	2	11,11,12	1.40	2 (18%)	15,15,17	2.09	3 (20%)

In the following table, the Chirals column lists the number of chiral outliers, the number of chiral centers analysed, the number of these observed in the model and the number defined in the Chemical Component Dictionary. Similar counts are reported in the Torsion and Rings columns. '-' means no outliers of that kind were identified.

Mol	Type	Chain	Res	Link	Chirals	Torsions	Rings
2	NAG	E	1	2,1	-	0/6/23/26	0/1/1/1
2	NAG	E	2	2	-	2/6/23/26	0/1/1/1
2	BMA	E	3	2	-	2/2/19/22	0/1/1/1
2	MAN	E	4	2	-	0/2/19/22	0/1/1/1
2	MAN	E	5	2	-	2/2/19/22	0/1/1/1
2	NAG	F	1	2,1	-	0/6/23/26	0/1/1/1
2	NAG	F	2	2	-	0/6/23/26	0/1/1/1
2	BMA	F	3	2	-	2/2/19/22	0/1/1/1
2	MAN	F	4	2	-	0/2/19/22	0/1/1/1

Continued on next page...

Continued from previous page...

Mol	Type	Chain	Res	Link	Chirals	Torsions	Rings
2	MAN	F	5	2	-	0/2/19/22	0/1/1/1
2	NAG	G	1	2,1	-	0/6/23/26	0/1/1/1
2	NAG	G	2	2	-	0/6/23/26	0/1/1/1
2	BMA	G	3	2	-	2/2/19/22	0/1/1/1
2	MAN	G	4	2	-	0/2/19/22	0/1/1/1
2	MAN	G	5	2	-	0/2/19/22	0/1/1/1
2	NAG	H	1	2,1	-	0/6/23/26	0/1/1/1
2	NAG	H	2	2	-	0/6/23/26	0/1/1/1
2	BMA	H	3	2	-	2/2/19/22	0/1/1/1
2	MAN	H	4	2	-	2/2/19/22	0/1/1/1
2	MAN	H	5	2	-	0/2/19/22	0/1/1/1

All (18) bond length outliers are listed below:

Mol	Chain	Res	Type	Atoms	Z	Observed(Å)	Ideal(Å)
2	G	1	NAG	C1-C2	5.21	1.60	1.52
2	E	1	NAG	C1-C2	5.20	1.60	1.52
2	F	1	NAG	C1-C2	5.14	1.60	1.52
2	H	1	NAG	C1-C2	5.07	1.59	1.52
2	E	5	MAN	O5-C1	2.77	1.48	1.43
2	F	5	MAN	O5-C5	2.69	1.48	1.43
2	F	5	MAN	O5-C1	2.62	1.47	1.43
2	H	5	MAN	O5-C1	2.61	1.47	1.43
2	H	5	MAN	O5-C5	2.53	1.48	1.43
2	G	5	MAN	O5-C1	2.51	1.47	1.43
2	G	5	MAN	O5-C5	2.45	1.48	1.43
2	H	3	BMA	C2-C3	2.45	1.56	1.52
2	E	5	MAN	O5-C5	2.42	1.48	1.43
2	F	3	BMA	C2-C3	2.29	1.55	1.52
2	F	4	MAN	O5-C5	2.14	1.47	1.43
2	E	4	MAN	O5-C5	2.10	1.47	1.43
2	F	1	NAG	C4-C3	2.05	1.57	1.52
2	H	4	MAN	O5-C5	2.02	1.47	1.43

All (16) bond angle outliers are listed below:

Mol	Chain	Res	Type	Atoms	Z	Observed(°)	Ideal(°)
2	F	5	MAN	C1-O5-C5	7.15	121.88	112.19
2	G	5	MAN	C1-O5-C5	6.95	121.61	112.19
2	H	5	MAN	C1-O5-C5	6.82	121.43	112.19
2	E	5	MAN	C1-O5-C5	6.53	121.05	112.19

Continued on next page...

Continued from previous page...

Mol	Chain	Res	Type	Atoms	Z	Observed(°)	Ideal(°)
2	E	4	MAN	C1-O5-C5	4.71	118.58	112.19
2	H	4	MAN	C1-O5-C5	4.65	118.49	112.19
2	G	4	MAN	C1-O5-C5	4.25	117.95	112.19
2	F	4	MAN	C1-O5-C5	3.93	117.52	112.19
2	G	5	MAN	O5-C1-C2	3.05	115.48	110.77
2	G	5	MAN	C1-C2-C3	3.03	113.39	109.67
2	H	5	MAN	O5-C1-C2	2.99	115.38	110.77
2	H	5	MAN	C1-C2-C3	2.93	113.27	109.67
2	F	5	MAN	O5-C1-C2	2.85	115.18	110.77
2	E	5	MAN	C1-C2-C3	2.81	113.12	109.67
2	E	5	MAN	O5-C1-C2	2.74	115.00	110.77
2	F	5	MAN	C1-C2-C3	2.63	112.90	109.67

There are no chirality outliers.

All (14) torsion outliers are listed below:

Mol	Chain	Res	Type	Atoms
2	E	5	MAN	O5-C5-C6-O6
2	H	3	BMA	O5-C5-C6-O6
2	E	3	BMA	O5-C5-C6-O6
2	F	3	BMA	O5-C5-C6-O6
2	G	3	BMA	O5-C5-C6-O6
2	E	5	MAN	C4-C5-C6-O6
2	G	3	BMA	C4-C5-C6-O6
2	E	3	BMA	C4-C5-C6-O6
2	F	3	BMA	C4-C5-C6-O6
2	H	3	BMA	C4-C5-C6-O6
2	H	4	MAN	C4-C5-C6-O6
2	H	4	MAN	O5-C5-C6-O6
2	E	2	NAG	C4-C5-C6-O6
2	E	2	NAG	O5-C5-C6-O6

There are no ring outliers.

6 monomers are involved in 4 short contacts:

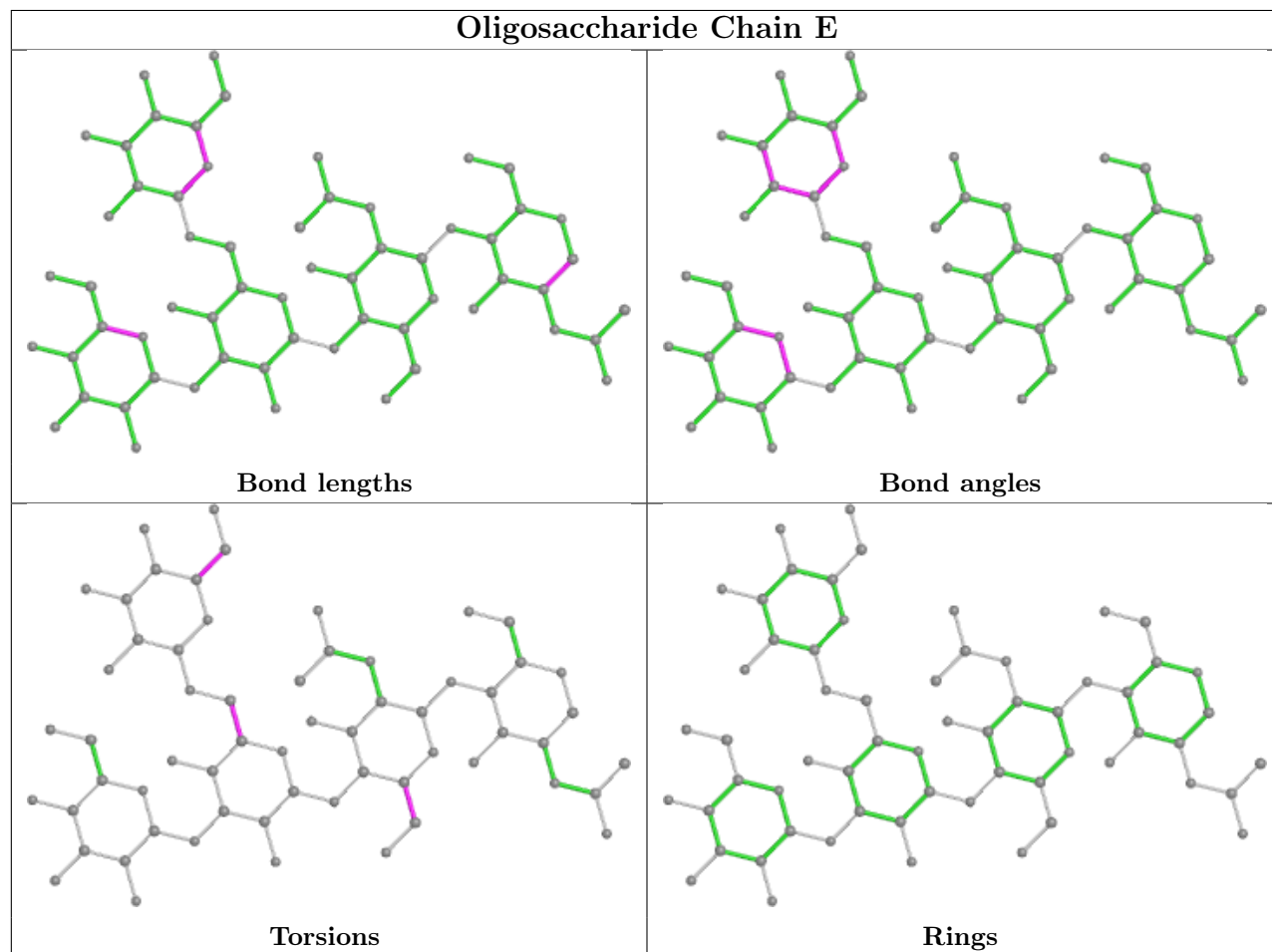
Mol	Chain	Res	Type	Clashes	Symm-Clashes
2	E	3	BMA	1	0
2	E	5	MAN	1	0
2	G	1	NAG	1	0
2	H	1	NAG	1	0
2	H	3	BMA	1	0

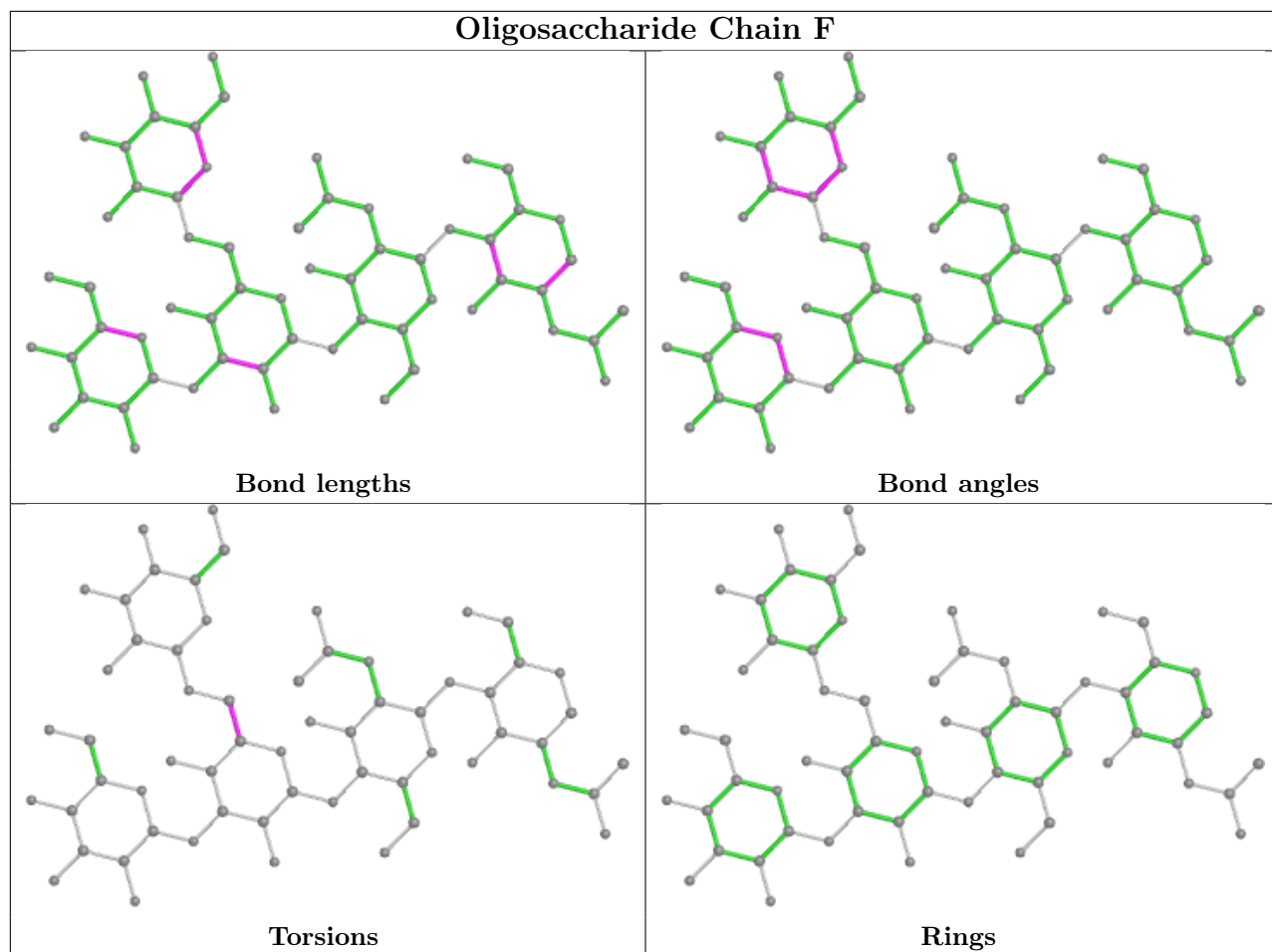
Continued on next page...

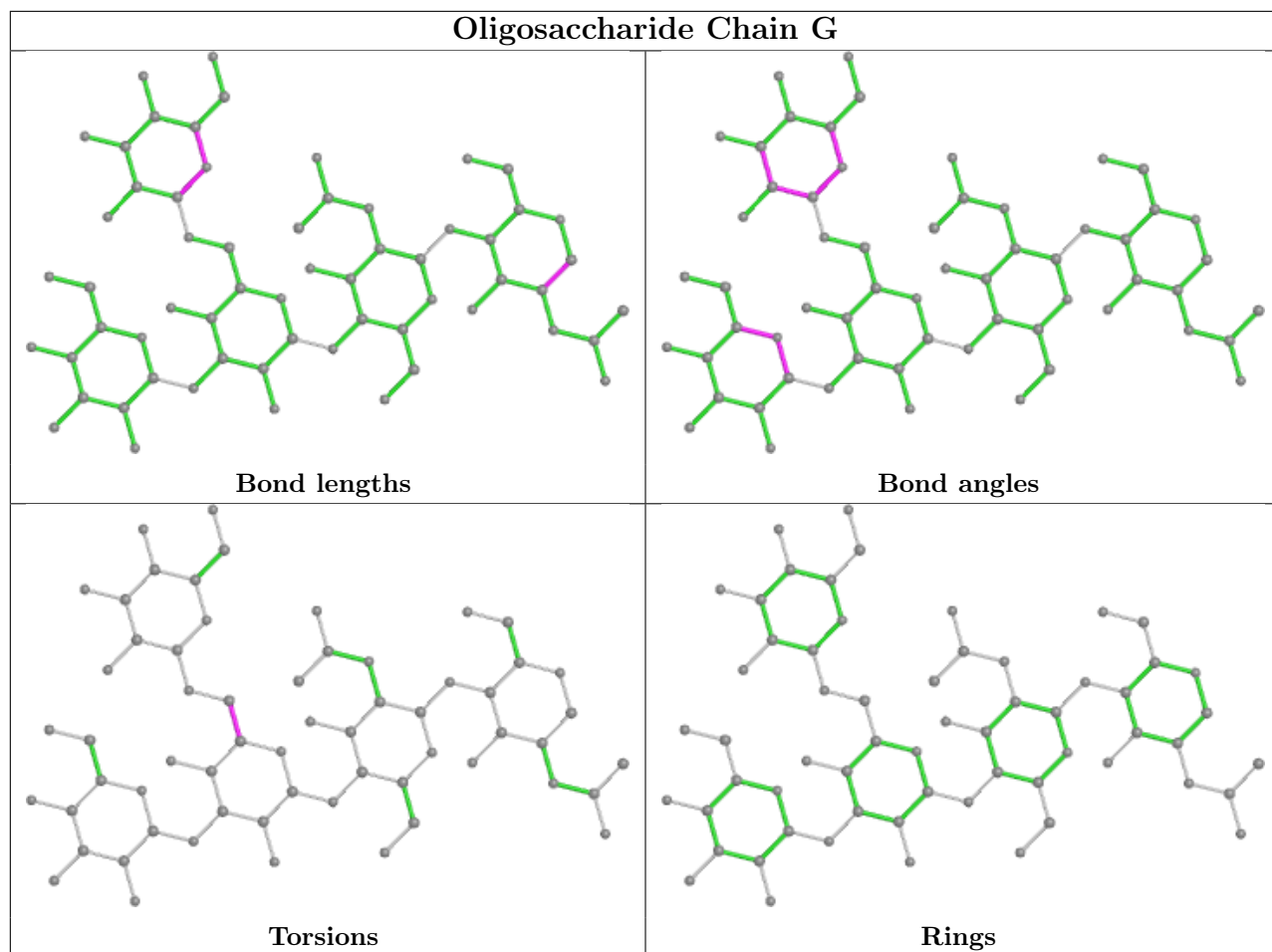
Continued from previous page...

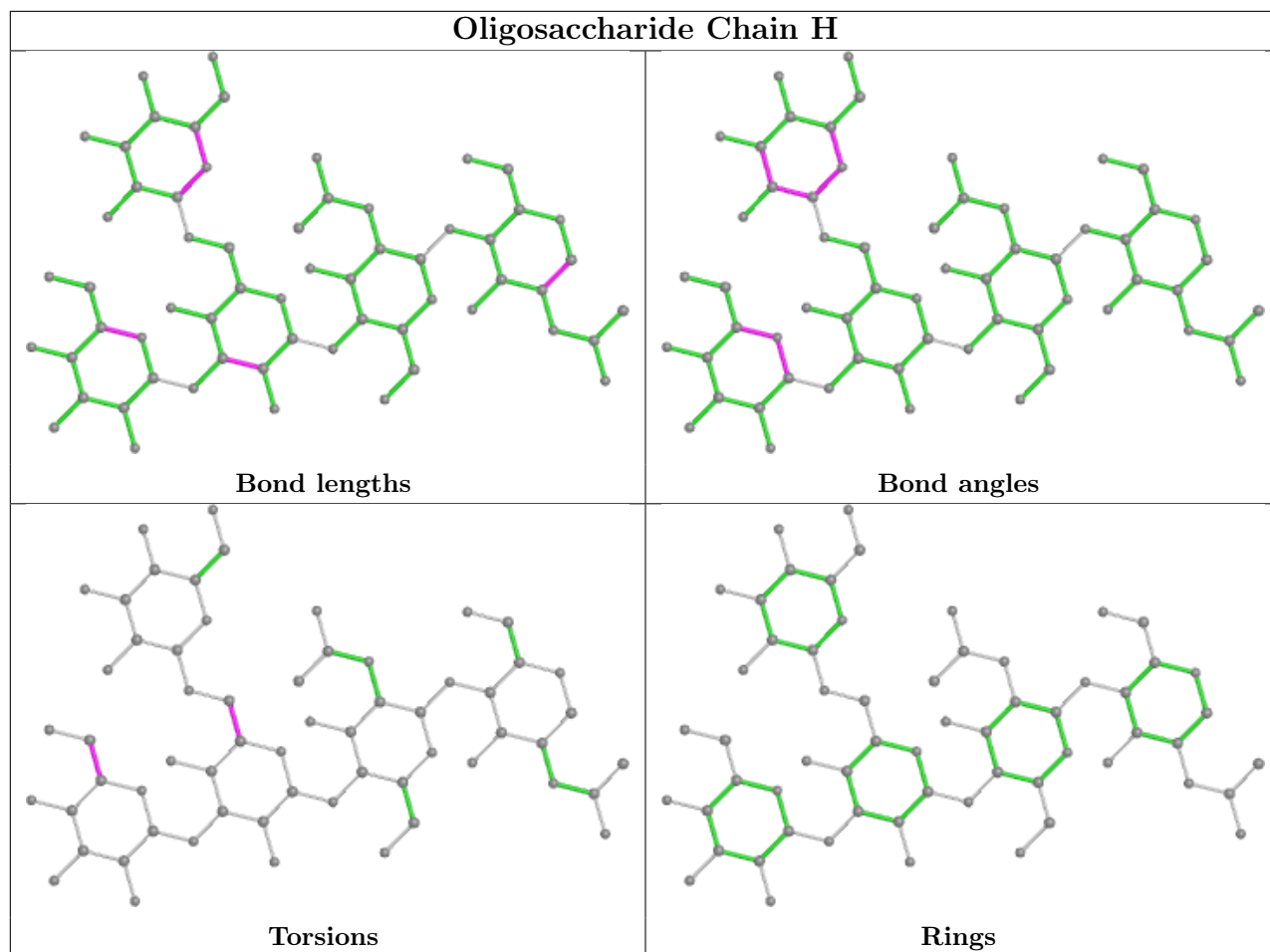
Mol	Chain	Res	Type	Clashes	Symm-Clashes
2	H	5	MAN	1	0

The following is a two-dimensional graphical depiction of Mogul quality analysis of bond lengths, bond angles, torsion angles, and ring geometry for oligosaccharide.









5.6 Ligand geometry [i](#)

Of 42 ligands modelled in this entry, 4 are monoatomic - leaving 38 for Mogul analysis.

In the following table, the Counts columns list the number of bonds (or angles) for which Mogul statistics could be retrieved, the number of bonds (or angles) that are observed in the model and the number of bonds (or angles) that are defined in the Chemical Component Dictionary. The Link column lists molecule types, if any, to which the group is linked. The Z score for a bond length (or angle) is the number of standard deviations the observed value is removed from the expected value. A bond length (or angle) with $|Z| > 2$ is considered an outlier worth inspection. RMSZ is the root-mean-square of all Z scores of the bond lengths (or angles).

Mol	Type	Chain	Res	Link	Bond lengths			Bond angles		
					Counts	RMSZ	# Z > 2	Counts	RMSZ	# Z > 2
5	GOL	B	300	-	5,5,5	3.54	5 (100%)	5,5,5	0.44	0
5	GOL	C	301	-	5,5,5	3.52	5 (100%)	5,5,5	0.39	0
6	TRS	C	501	-	7,7,7	3.05	5 (71%)	9,9,9	5.14	3 (33%)
4	AZM	B	263	-	8,13,13	1.10	1 (12%)	9,19,19	1.65	2 (22%)
5	GOL	D	304	-	5,5,5	3.55	5 (100%)	5,5,5	0.44	0

Mol	Type	Chain	Res	Link	Bond lengths			Bond angles		
					Counts	RMSZ	# Z > 2	Counts	RMSZ	# Z > 2
7	PO4	A	601	-	4,4,4	1.64	0	6,6,6	0.43	0
5	GOL	B	301	-	5,5,5	3.51	5 (100%)	5,5,5	0.40	0
5	GOL	C	302	-	5,5,5	3.57	5 (100%)	5,5,5	0.45	0
5	GOL	A	302	-	5,5,5	3.55	5 (100%)	5,5,5	0.53	0
5	GOL	B	302	-	5,5,5	3.56	5 (100%)	5,5,5	0.47	0
5	GOL	D	300	-	5,5,5	3.51	5 (100%)	5,5,5	0.45	0
5	GOL	A	307	-	5,5,5	3.58	5 (100%)	5,5,5	0.50	0
7	PO4	D	600	-	4,4,4	1.61	0	6,6,6	0.44	0
4	AZM	D	263	-	8,13,13	1.08	1 (12%)	9,19,19	1.70	2 (22%)
5	GOL	B	306	-	5,5,5	3.60	5 (100%)	5,5,5	0.42	0
5	GOL	D	301	-	5,5,5	3.49	5 (100%)	5,5,5	0.40	0
5	GOL	D	306	-	5,5,5	3.67	5 (100%)	5,5,5	0.43	0
7	PO4	A	600	-	4,4,4	1.59	0	6,6,6	0.43	0
5	GOL	A	304	-	5,5,5	3.56	5 (100%)	5,5,5	0.45	0
5	GOL	D	302	-	5,5,5	3.57	5 (100%)	5,5,5	0.47	0
5	GOL	A	300	-	5,5,5	3.49	5 (100%)	5,5,5	0.45	0
5	GOL	A	303	-	5,5,5	3.58	5 (100%)	5,5,5	0.42	0
6	TRS	D	501	-	7,7,7	2.96	4 (57%)	9,9,9	5.16	3 (33%)
5	GOL	B	304	-	5,5,5	3.57	5 (100%)	5,5,5	0.44	0
4	AZM	C	263	-	8,13,13	1.09	1 (12%)	9,19,19	1.65	2 (22%)
4	AZM	A	263	-	8,13,13	1.00	1 (12%)	9,19,19	1.70	2 (22%)
5	GOL	A	301	-	5,5,5	3.54	5 (100%)	5,5,5	0.37	0
5	GOL	B	303	-	5,5,5	3.58	5 (100%)	5,5,5	0.42	0
7	PO4	C	600	-	4,4,4	1.62	0	6,6,6	0.45	0
5	GOL	A	305	-	5,5,5	3.51	5 (100%)	5,5,5	0.64	0
6	TRS	A	501	-	7,7,7	3.08	5 (71%)	9,9,9	5.13	3 (33%)
5	GOL	C	304	-	5,5,5	3.60	5 (100%)	5,5,5	0.44	0
7	PO4	B	600	-	4,4,4	1.65	0	6,6,6	0.43	0
6	TRS	B	501	-	7,7,7	3.06	6 (85%)	9,9,9	5.10	3 (33%)
5	GOL	D	303	-	5,5,5	3.59	5 (100%)	5,5,5	0.41	0
5	GOL	C	303	-	5,5,5	3.59	5 (100%)	5,5,5	0.42	0
5	GOL	D	307	-	5,5,5	3.62	5 (100%)	5,5,5	0.42	0
5	GOL	C	300	-	5,5,5	3.54	5 (100%)	5,5,5	0.45	0

In the following table, the Chirals column lists the number of chiral outliers, the number of chiral centers analysed, the number of these observed in the model and the number defined in the

Chemical Component Dictionary. Similar counts are reported in the Torsion and Rings columns.
'-' means no outliers of that kind were identified.

Mol	Type	Chain	Res	Link	Chirals	Torsions	Rings
5	GOL	B	300	-	-	2/4/4/4	-
5	GOL	C	301	-	-	0/4/4/4	-
6	TRS	C	501	-	-	9/9/9/9	-
4	AZM	B	263	-	-	2/2/10/10	0/1/1/1
5	GOL	D	304	-	-	2/4/4/4	-
5	GOL	B	301	-	-	0/4/4/4	-
5	GOL	C	302	-	-	2/4/4/4	-
5	GOL	A	302	-	-	3/4/4/4	-
5	GOL	B	302	-	-	4/4/4/4	-
5	GOL	D	300	-	-	2/4/4/4	-
5	GOL	A	307	-	-	3/4/4/4	-
4	AZM	D	263	-	-	2/2/10/10	0/1/1/1
5	GOL	B	306	-	-	2/4/4/4	-
5	GOL	D	301	-	-	0/4/4/4	-
5	GOL	D	306	-	-	1/4/4/4	-
5	GOL	A	304	-	-	2/4/4/4	-
5	GOL	D	302	-	-	3/4/4/4	-
5	GOL	A	300	-	-	2/4/4/4	-
5	GOL	A	303	-	-	2/4/4/4	-
6	TRS	D	501	-	-	8/9/9/9	-
5	GOL	B	304	-	-	2/4/4/4	-
4	AZM	C	263	-	-	2/2/10/10	0/1/1/1
4	AZM	A	263	-	-	2/2/10/10	0/1/1/1
5	GOL	A	301	-	-	0/4/4/4	-
5	GOL	B	303	-	-	2/4/4/4	-
5	GOL	A	305	-	-	4/4/4/4	-
6	TRS	A	501	-	-	3/9/9/9	-
5	GOL	C	304	-	-	3/4/4/4	-
6	TRS	B	501	-	-	2/9/9/9	-
5	GOL	D	303	-	-	1/4/4/4	-
5	GOL	C	303	-	-	2/4/4/4	-
5	GOL	D	307	-	-	2/4/4/4	-
5	GOL	C	300	-	-	2/4/4/4	-

All (149) bond length outliers are listed below:

Mol	Chain	Res	Type	Atoms	Z	Observed(Å)	Ideal(Å)
6	A	501	TRS	C2-C	-4.96	1.37	1.53
6	C	501	TRS	C2-C	-4.83	1.38	1.53
6	D	501	TRS	C2-C	-4.81	1.38	1.53
5	D	306	GOL	O3-C3	4.71	1.62	1.42
5	A	302	GOL	O1-C1	4.68	1.62	1.42
5	C	302	GOL	O1-C1	4.68	1.62	1.42
5	B	306	GOL	O1-C1	4.67	1.62	1.42
5	D	302	GOL	O1-C1	4.65	1.62	1.42
5	B	302	GOL	O1-C1	4.64	1.62	1.42
5	D	302	GOL	O3-C3	4.61	1.61	1.42
5	B	302	GOL	O3-C3	4.60	1.61	1.42
5	A	307	GOL	O1-C1	4.60	1.61	1.42
5	C	303	GOL	O3-C3	4.59	1.61	1.42
5	B	303	GOL	O3-C3	4.58	1.61	1.42
5	B	301	GOL	O3-C3	4.58	1.61	1.42
5	D	307	GOL	O3-C3	4.58	1.61	1.42
5	A	304	GOL	O1-C1	4.58	1.61	1.42
5	D	303	GOL	O1-C1	4.57	1.61	1.42
5	C	303	GOL	O1-C1	4.56	1.61	1.42
5	D	307	GOL	O1-C1	4.55	1.61	1.42
5	C	302	GOL	O3-C3	4.55	1.61	1.42
5	A	303	GOL	O1-C1	4.55	1.61	1.42
5	B	304	GOL	O3-C3	4.54	1.61	1.42
5	C	304	GOL	O3-C3	4.54	1.61	1.42
5	D	300	GOL	O3-C3	4.54	1.61	1.42
6	B	501	TRS	C2-C	-4.53	1.39	1.53
5	A	300	GOL	O3-C3	4.53	1.61	1.42
5	B	303	GOL	O1-C1	4.53	1.61	1.42
5	A	301	GOL	O1-C1	4.53	1.61	1.42
5	A	301	GOL	O3-C3	4.53	1.61	1.42
5	A	304	GOL	O3-C3	4.52	1.61	1.42
5	D	303	GOL	O3-C3	4.52	1.61	1.42
5	B	306	GOL	O3-C3	4.50	1.61	1.42
5	A	305	GOL	O1-C1	4.50	1.61	1.42
5	A	303	GOL	O3-C3	4.50	1.61	1.42
5	D	304	GOL	O3-C3	4.49	1.61	1.42
5	B	304	GOL	O1-C1	4.49	1.61	1.42
5	A	307	GOL	O3-C3	4.49	1.61	1.42
5	C	301	GOL	O1-C1	4.49	1.61	1.42
5	C	300	GOL	O3-C3	4.48	1.61	1.42
5	D	304	GOL	O1-C1	4.48	1.61	1.42
5	B	301	GOL	O1-C1	4.48	1.61	1.42
5	C	301	GOL	O3-C3	4.47	1.61	1.42

Continued on next page...

Continued from previous page...

Mol	Chain	Res	Type	Atoms	Z	Observed(Å)	Ideal(Å)
5	D	301	GOL	O3-C3	4.46	1.61	1.42
5	B	300	GOL	O3-C3	4.46	1.61	1.42
5	D	301	GOL	O1-C1	4.42	1.61	1.42
5	B	300	GOL	O1-C1	4.41	1.61	1.42
5	A	305	GOL	O3-C3	4.40	1.61	1.42
5	C	300	GOL	O1-C1	4.40	1.61	1.42
5	A	302	GOL	O3-C3	4.40	1.61	1.42
5	C	304	GOL	O1-C1	4.35	1.60	1.42
5	D	306	GOL	O1-C1	4.33	1.60	1.42
5	D	300	GOL	O1-C1	4.33	1.60	1.42
5	A	300	GOL	O1-C1	4.30	1.60	1.42
6	B	501	TRS	C3-C	-4.15	1.40	1.53
6	C	501	TRS	C3-C	-3.94	1.40	1.53
6	A	501	TRS	C3-C	-3.71	1.41	1.53
6	D	501	TRS	C3-C	-3.64	1.41	1.53
6	A	501	TRS	C1-C	-3.62	1.41	1.53
6	B	501	TRS	C1-C	-3.61	1.41	1.53
6	C	501	TRS	C1-C	-3.48	1.42	1.53
6	D	501	TRS	C1-C	-3.36	1.42	1.53
5	D	306	GOL	C1-C2	-3.32	1.38	1.51
5	C	304	GOL	C1-C2	-2.93	1.39	1.51
5	C	304	GOL	O2-C2	-2.89	1.34	1.43
5	A	305	GOL	C1-C2	-2.87	1.39	1.51
5	C	304	GOL	C3-C2	-2.86	1.39	1.51
5	C	300	GOL	C1-C2	-2.86	1.39	1.51
5	D	306	GOL	O2-C2	-2.86	1.34	1.43
5	A	301	GOL	O2-C2	-2.85	1.34	1.43
5	A	302	GOL	C3-C2	-2.84	1.40	1.51
5	D	307	GOL	C3-C2	-2.83	1.40	1.51
5	D	300	GOL	C1-C2	-2.83	1.40	1.51
5	A	307	GOL	C3-C2	-2.82	1.40	1.51
5	D	307	GOL	C1-C2	-2.82	1.40	1.51
5	D	307	GOL	O2-C2	-2.82	1.35	1.43
5	D	303	GOL	O2-C2	-2.82	1.35	1.43
5	C	300	GOL	C3-C2	-2.82	1.40	1.51
5	A	300	GOL	C1-C2	-2.81	1.40	1.51
5	C	301	GOL	O2-C2	-2.81	1.35	1.43
5	B	300	GOL	C1-C2	-2.81	1.40	1.51
5	B	300	GOL	C3-C2	-2.80	1.40	1.51
5	D	304	GOL	O2-C2	-2.80	1.35	1.43
5	B	304	GOL	C1-C2	-2.80	1.40	1.51
5	A	303	GOL	C1-C2	-2.80	1.40	1.51

Continued on next page...

Continued from previous page...

Mol	Chain	Res	Type	Atoms	Z	Observed(Å)	Ideal(Å)
5	B	304	GOL	O2-C2	-2.79	1.35	1.43
5	C	303	GOL	C1-C2	-2.79	1.40	1.51
5	B	306	GOL	C3-C2	-2.78	1.40	1.51
5	D	303	GOL	C1-C2	-2.78	1.40	1.51
5	B	303	GOL	C1-C2	-2.78	1.40	1.51
5	A	303	GOL	C3-C2	-2.77	1.40	1.51
5	A	303	GOL	O2-C2	-2.77	1.35	1.43
5	D	301	GOL	O2-C2	-2.77	1.35	1.43
5	B	306	GOL	O2-C2	-2.76	1.35	1.43
5	D	304	GOL	C1-C2	-2.76	1.40	1.51
5	A	300	GOL	C3-C2	-2.75	1.40	1.51
5	B	302	GOL	C3-C2	-2.75	1.40	1.51
5	A	307	GOL	C1-C2	-2.75	1.40	1.51
5	C	302	GOL	C3-C2	-2.74	1.40	1.51
5	A	304	GOL	O2-C2	-2.74	1.35	1.43
5	D	303	GOL	C3-C2	-2.73	1.40	1.51
5	B	300	GOL	O2-C2	-2.73	1.35	1.43
5	B	303	GOL	O2-C2	-2.73	1.35	1.43
5	D	300	GOL	C3-C2	-2.73	1.40	1.51
5	C	303	GOL	O2-C2	-2.72	1.35	1.43
5	B	306	GOL	C1-C2	-2.72	1.40	1.51
5	D	304	GOL	C3-C2	-2.72	1.40	1.51
5	A	304	GOL	C1-C2	-2.72	1.40	1.51
5	B	303	GOL	C3-C2	-2.71	1.40	1.51
5	C	303	GOL	C3-C2	-2.71	1.40	1.51
5	A	307	GOL	O2-C2	-2.70	1.35	1.43
5	D	302	GOL	C3-C2	-2.70	1.40	1.51
5	D	306	GOL	C3-C2	-2.69	1.40	1.51
5	B	301	GOL	O2-C2	-2.69	1.35	1.43
5	B	304	GOL	C3-C2	-2.69	1.40	1.51
5	C	301	GOL	C1-C2	-2.69	1.40	1.51
5	A	304	GOL	C3-C2	-2.69	1.40	1.51
5	C	302	GOL	O2-C2	-2.69	1.35	1.43
5	A	302	GOL	O2-C2	-2.68	1.35	1.43
5	C	300	GOL	O2-C2	-2.67	1.35	1.43
5	D	302	GOL	O2-C2	-2.65	1.35	1.43
5	D	301	GOL	C1-C2	-2.65	1.40	1.51
5	D	300	GOL	O2-C2	-2.64	1.35	1.43
5	A	305	GOL	C3-C2	-2.64	1.40	1.51
5	A	301	GOL	C1-C2	-2.63	1.40	1.51
5	B	301	GOL	C1-C2	-2.61	1.41	1.51
5	B	302	GOL	O2-C2	-2.61	1.35	1.43

Continued on next page...

Continued from previous page...

Mol	Chain	Res	Type	Atoms	Z	Observed(Å)	Ideal(Å)
5	D	301	GOL	C3-C2	-2.60	1.41	1.51
5	A	305	GOL	O2-C2	-2.59	1.35	1.43
5	C	301	GOL	C3-C2	-2.58	1.41	1.51
5	B	301	GOL	C3-C2	-2.57	1.41	1.51
5	A	302	GOL	C1-C2	-2.57	1.41	1.51
5	A	301	GOL	C3-C2	-2.55	1.41	1.51
5	C	302	GOL	C1-C2	-2.55	1.41	1.51
5	A	300	GOL	O2-C2	-2.54	1.35	1.43
5	D	302	GOL	C1-C2	-2.53	1.41	1.51
5	B	302	GOL	C1-C2	-2.53	1.41	1.51
6	A	501	TRS	O2-C2	-2.45	1.34	1.42
6	D	501	TRS	O2-C2	-2.43	1.34	1.42
4	D	263	AZM	C3-N4	2.30	1.40	1.36
6	B	501	TRS	O1-C1	-2.27	1.34	1.42
6	C	501	TRS	O2-C2	-2.26	1.34	1.42
6	C	501	TRS	O1-C1	-2.22	1.34	1.42
6	A	501	TRS	O1-C1	-2.21	1.34	1.42
4	A	263	AZM	C3-N4	2.17	1.40	1.36
6	B	501	TRS	O2-C2	-2.16	1.35	1.42
6	B	501	TRS	O3-C3	-2.10	1.35	1.42
4	C	263	AZM	C3-N4	2.09	1.39	1.36
4	B	263	AZM	C3-N4	2.09	1.39	1.36

All (20) bond angle outliers are listed below:

Mol	Chain	Res	Type	Atoms	Z	Observed(°)	Ideal(°)
6	A	501	TRS	O3-C3-C	9.20	140.16	111.00
6	C	501	TRS	O3-C3-C	9.10	139.83	111.00
6	D	501	TRS	O3-C3-C	9.08	139.76	111.00
6	B	501	TRS	O3-C3-C	9.02	139.59	111.00
6	C	501	TRS	O1-C1-C	8.64	138.39	111.00
6	D	501	TRS	O1-C1-C	8.62	138.31	111.00
6	D	501	TRS	O2-C2-C	8.61	138.28	111.00
6	B	501	TRS	O1-C1-C	8.51	137.98	111.00
6	A	501	TRS	O2-C2-C	8.49	137.90	111.00
6	B	501	TRS	O2-C2-C	8.48	137.88	111.00
6	A	501	TRS	O1-C1-C	8.48	137.86	111.00
6	C	501	TRS	O2-C2-C	8.47	137.85	111.00
4	A	263	AZM	O1-S1-C1	-3.65	104.30	108.59
4	D	263	AZM	O1-S1-C1	-3.58	104.38	108.59
4	C	263	AZM	O1-S1-C1	-3.20	104.83	108.59
4	B	263	AZM	O2-S1-C1	-3.15	104.89	108.59

Continued on next page...

Continued from previous page...

Mol	Chain	Res	Type	Atoms	Z	Observed(°)	Ideal(°)
4	B	263	AZM	O1-S1-C1	-3.07	104.98	108.59
4	C	263	AZM	O2-S1-C1	-3.01	105.05	108.59
4	D	263	AZM	O2-S1-C1	-2.83	105.27	108.59
4	A	263	AZM	O2-S1-C1	-2.73	105.38	108.59

There are no chirality outliers.

All (78) torsion outliers are listed below:

Mol	Chain	Res	Type	Atoms
4	B	263	AZM	C4-C3-N4-C2
4	B	263	AZM	O3-C3-N4-C2
4	C	263	AZM	C4-C3-N4-C2
4	D	263	AZM	C4-C3-N4-C2
5	A	300	GOL	O1-C1-C2-C3
5	A	302	GOL	O1-C1-C2-C3
5	A	304	GOL	O1-C1-C2-C3
5	A	305	GOL	C1-C2-C3-O3
5	B	300	GOL	O1-C1-C2-C3
5	B	302	GOL	O1-C1-C2-C3
5	B	302	GOL	C1-C2-C3-O3
5	B	303	GOL	O1-C1-C2-C3
5	B	304	GOL	O1-C1-C2-C3
5	C	300	GOL	O1-C1-C2-O2
5	C	300	GOL	O1-C1-C2-C3
5	C	302	GOL	C1-C2-C3-O3
5	C	304	GOL	O1-C1-C2-C3
5	D	300	GOL	O1-C1-C2-O2
5	D	300	GOL	O1-C1-C2-C3
5	D	302	GOL	C1-C2-C3-O3
5	D	304	GOL	O1-C1-C2-C3
5	D	307	GOL	C1-C2-C3-O3
6	C	501	TRS	C2-C-C1-O1
6	C	501	TRS	C3-C-C1-O1
6	C	501	TRS	N-C-C1-O1
6	C	501	TRS	C1-C-C2-O2
6	C	501	TRS	C3-C-C2-O2
6	C	501	TRS	N-C-C2-O2
6	C	501	TRS	C2-C-C3-O3
6	D	501	TRS	C2-C-C1-O1
6	D	501	TRS	N-C-C1-O1
6	D	501	TRS	C1-C-C2-O2
6	D	501	TRS	C3-C-C2-O2

Continued on next page...

Continued from previous page...

Mol	Chain	Res	Type	Atoms
6	D	501	TRS	N-C-C2-O2
6	D	501	TRS	N-C-C3-O3
5	D	307	GOL	O2-C2-C3-O3
4	C	263	AZM	O3-C3-N4-C2
4	D	263	AZM	O3-C3-N4-C2
5	B	306	GOL	C1-C2-C3-O3
5	D	302	GOL	O1-C1-C2-C3
5	D	306	GOL	O1-C1-C2-C3
5	A	304	GOL	O1-C1-C2-O2
5	A	305	GOL	O2-C2-C3-O3
5	B	300	GOL	O1-C1-C2-O2
5	B	303	GOL	O1-C1-C2-O2
5	B	304	GOL	O1-C1-C2-O2
5	B	306	GOL	O2-C2-C3-O3
5	C	302	GOL	O2-C2-C3-O3
5	C	304	GOL	O1-C1-C2-O2
5	D	302	GOL	O2-C2-C3-O3
5	D	304	GOL	O1-C1-C2-O2
6	A	501	TRS	C2-C-C3-O3
6	D	501	TRS	C2-C-C3-O3
5	A	302	GOL	O1-C1-C2-O2
4	A	263	AZM	C4-C3-N4-C2
4	A	263	AZM	O3-C3-N4-C2
5	B	302	GOL	O2-C2-C3-O3
5	A	307	GOL	O1-C1-C2-O2
5	B	302	GOL	O1-C1-C2-O2
6	A	501	TRS	N-C-C3-O3
6	C	501	TRS	C1-C-C3-O3
6	D	501	TRS	C3-C-C1-O1
5	A	303	GOL	O1-C1-C2-C3
5	A	305	GOL	O1-C1-C2-C3
6	B	501	TRS	C2-C-C1-O1
5	A	307	GOL	O1-C1-C2-C3
5	C	303	GOL	O1-C1-C2-C3
5	A	300	GOL	O1-C1-C2-O2
5	A	303	GOL	O1-C1-C2-O2
5	A	305	GOL	O1-C1-C2-O2
6	A	501	TRS	C3-C-C1-O1
6	B	501	TRS	C1-C-C2-O2
6	C	501	TRS	N-C-C3-O3
5	A	302	GOL	C1-C2-C3-O3
5	A	307	GOL	C1-C2-C3-O3

Continued on next page...

Continued from previous page...

Mol	Chain	Res	Type	Atoms
5	C	304	GOL	C1-C2-C3-O3
5	D	303	GOL	O1-C1-C2-C3
5	C	303	GOL	O1-C1-C2-O2

There are no ring outliers.

9 monomers are involved in 11 short contacts:

Mol	Chain	Res	Type	Clashes	Symm-Clashes
5	B	300	GOL	1	0
6	C	501	TRS	1	0
5	A	302	GOL	1	0
5	D	300	GOL	1	0
5	B	306	GOL	1	0
5	D	306	GOL	3	0
6	D	501	TRS	1	0
5	A	305	GOL	1	0
5	C	300	GOL	1	0

5.7 Other polymers [i](#)

There are no such residues in this entry.

5.8 Polymer linkage issues [i](#)

There are no chain breaks in this entry.

6 Fit of model and data [i](#)

6.1 Protein, DNA and RNA chains [i](#)

In the following table, the column labelled ‘#RSRZ> 2’ contains the number (and percentage) of RSRZ outliers, followed by percent RSRZ outliers for the chain as percentile scores relative to all X-ray entries and entries of similar resolution. The OWAB column contains the minimum, median, 95th percentile and maximum values of the occupancy-weighted average B-factor per residue. The column labelled ‘Q< 0.9’ lists the number of (and percentage) of residues with an average occupancy less than 0.9.

Mol	Chain	Analysed	<RSRZ>	#RSRZ>2	OWAB(Å ²)	Q<0.9
1	A	257/257 (100%)	-0.90	0 100 100	10, 17, 30, 38	0
1	B	252/257 (98%)	-0.76	3 (1%) 79 77	11, 19, 37, 54	0
1	C	252/257 (98%)	-0.75	3 (1%) 79 77	12, 18, 35, 58	0
1	D	253/257 (98%)	-0.89	2 (0%) 86 85	10, 16, 28, 48	0
All	All	1014/1028 (98%)	-0.82	8 (0%) 86 85	10, 18, 33, 58	0

All (8) RSRZ outliers are listed below:

Mol	Chain	Res	Type	RSRZ
1	C	238	ASP	5.1
1	D	3	SER	4.5
1	B	237	GLY	4.2
1	B	238	ASP	3.5
1	C	4	HIS	3.2
1	B	4	HIS	3.0
1	C	237	GLY	2.8
1	D	4	HIS	2.2

6.2 Non-standard residues in protein, DNA, RNA chains [i](#)

There are no non-standard protein/DNA/RNA residues in this entry.

6.3 Carbohydrates [i](#)

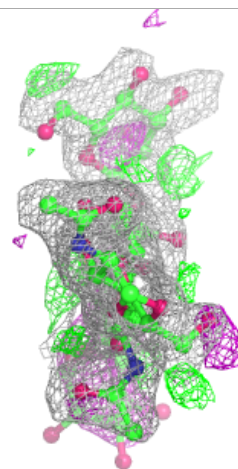
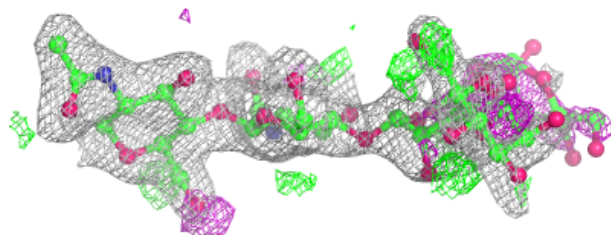
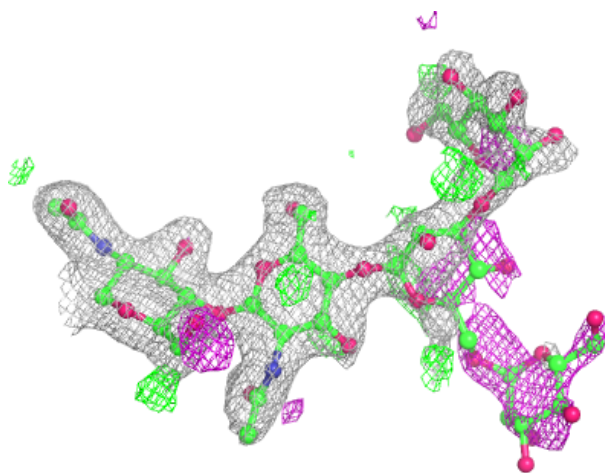
In the following table, the Atoms column lists the number of modelled atoms in the group and the number defined in the chemical component dictionary. The B-factors column lists the minimum, median, 95th percentile and maximum values of B factors of atoms in the group. The column labelled ‘Q< 0.9’ lists the number of atoms with occupancy less than 0.9.

Mol	Type	Chain	Res	Atoms	RSCC	RSR	B-factors(\AA^2)	Q<0.9
2	MAN	H	5	11/12	0.36	0.83	79,81,81,81	0
2	MAN	F	4	11/12	0.38	0.52	74,76,76,76	0
2	BMA	E	3	11/12	0.43	0.51	65,70,74,77	0
2	BMA	H	3	11/12	0.44	0.52	66,72,74,78	0
2	MAN	G	5	11/12	0.44	0.78	78,79,80,80	0
2	BMA	G	3	11/12	0.58	0.50	66,72,74,77	0
2	MAN	E	5	11/12	0.59	0.84	78,79,80,80	0
2	BMA	F	3	11/12	0.62	0.54	67,72,76,79	0
2	MAN	F	5	11/12	0.62	0.89	81,82,83,84	0
2	MAN	E	4	11/12	0.66	0.47	73,73,73,73	0
2	MAN	G	4	11/12	0.75	0.54	75,75,76,76	0
2	MAN	H	4	11/12	0.76	0.49	75,76,77,77	0
2	NAG	H	2	14/15	0.84	0.21	39,42,50,58	0
2	NAG	G	2	14/15	0.86	0.16	41,44,51,59	0
2	NAG	F	2	14/15	0.86	0.18	41,45,52,60	0
2	NAG	E	2	14/15	0.87	0.18	39,43,51,59	0
2	NAG	E	1	14/15	0.93	0.10	18,24,33,35	0
2	NAG	H	1	14/15	0.95	0.10	17,22,30,31	0
2	NAG	G	1	14/15	0.96	0.08	19,25,32,34	0
2	NAG	F	1	14/15	0.96	0.08	20,26,34,36	0

The following is a graphical depiction of the model fit to experimental electron density for oligosaccharide. Each fit is shown from different orientation to approximate a three-dimensional view.

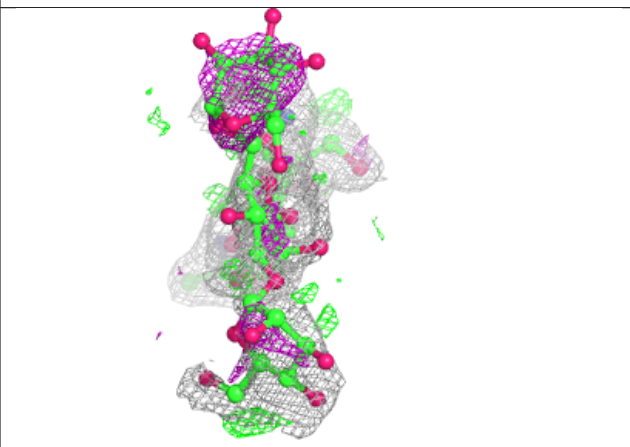
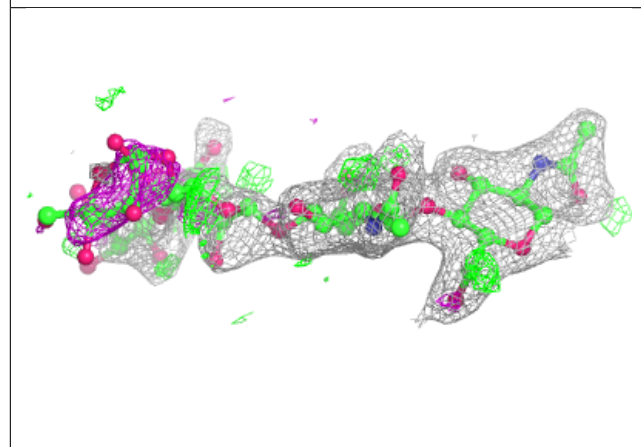
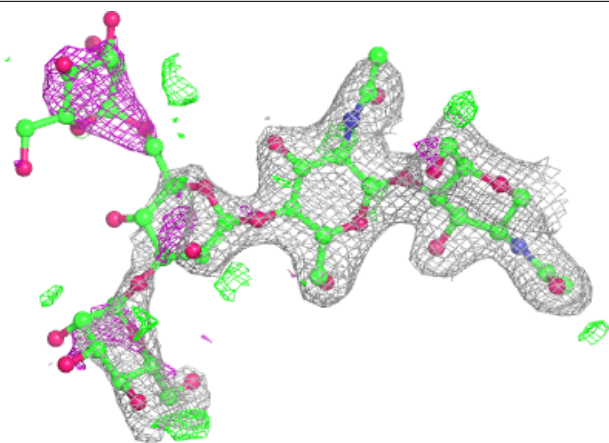
Electron density around Chain E:

$2mF_o-DF_c$ (at 0.7 rmsd) in gray
 mF_o-DF_c (at 3 rmsd) in purple (negative)
and green (positive)



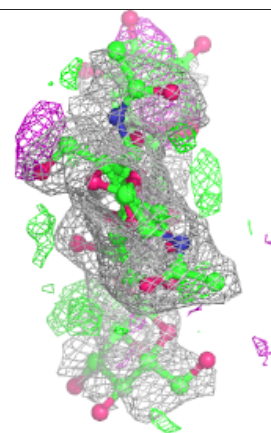
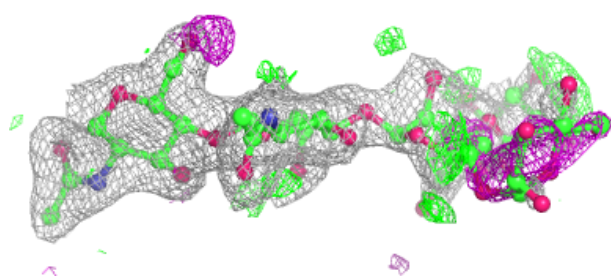
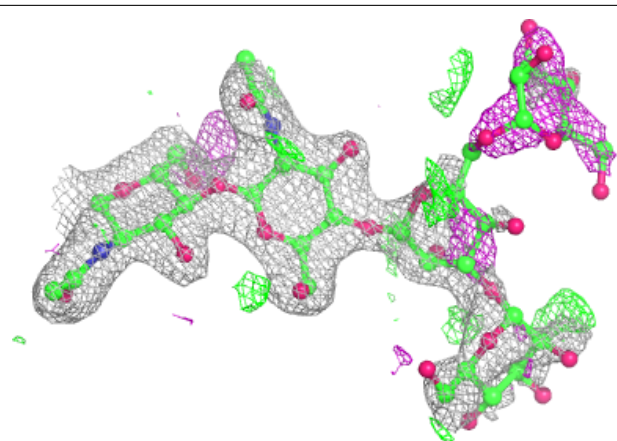
Electron density around Chain F:

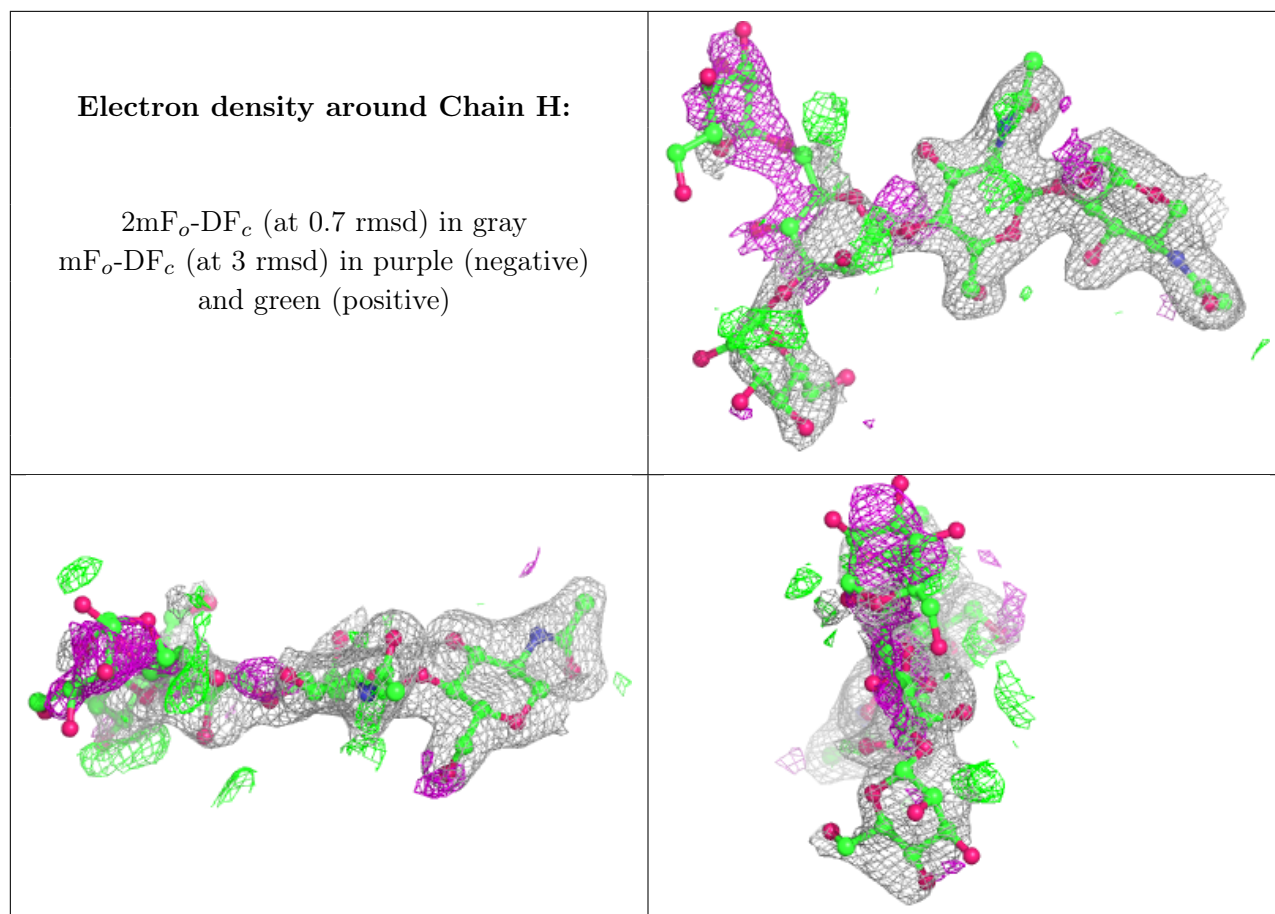
$2mF_o-DF_c$ (at 0.7 rmsd) in gray
 mF_o-DF_c (at 3 rmsd) in purple (negative)
and green (positive)



Electron density around Chain G:

$2mF_o-DF_c$ (at 0.7 rmsd) in gray
 mF_o-DF_c (at 3 rmsd) in purple (negative)
and green (positive)





6.4 Ligands [i](#)

In the following table, the Atoms column lists the number of modelled atoms in the group and the number defined in the chemical component dictionary. The B-factors column lists the minimum, median, 95th percentile and maximum values of B factors of atoms in the group. The column labelled 'Q < 0.9' lists the number of atoms with occupancy less than 0.9.

Mol	Type	Chain	Res	Atoms	RSCC	RSR	B-factors(Å ²)	Q < 0.9
5	GOL	A	305	6/6	0.55	0.32	46,48,49,51	0
5	GOL	D	300	6/6	0.72	0.27	32,43,45,45	0
6	TRS	C	501	8/8	0.72	0.35	62,63,64,66	0
6	TRS	B	501	8/8	0.74	0.26	51,53,54,55	0
5	GOL	B	300	6/6	0.76	0.24	43,50,51,51	0
6	TRS	D	501	8/8	0.76	0.21	41,47,48,50	0
6	TRS	A	501	8/8	0.77	0.29	50,52,53,53	0
5	GOL	B	303	6/6	0.79	0.21	51,54,54,57	0
5	GOL	A	307	6/6	0.79	0.21	66,66,66,67	0
5	GOL	A	303	6/6	0.79	0.21	55,57,59,60	0
5	GOL	B	306	6/6	0.80	0.25	72,72,72,73	0
5	GOL	C	300	6/6	0.80	0.22	40,47,48,48	0

Continued on next page...

Continued from previous page...

Mol	Type	Chain	Res	Atoms	RSCC	RSR	B-factors(\AA^2)	Q<0.9
5	GOL	A	300	6/6	0.80	0.22	35,46,47,49	0
5	GOL	D	307	6/6	0.80	0.16	65,65,66,67	0
5	GOL	C	302	6/6	0.81	0.17	44,45,45,46	0
5	GOL	A	301	6/6	0.82	0.21	31,33,34,35	0
5	GOL	C	303	6/6	0.82	0.23	57,57,59,60	0
5	GOL	D	302	6/6	0.83	0.19	38,41,42,43	0
5	GOL	A	304	6/6	0.84	0.19	29,39,43,46	0
5	GOL	C	304	6/6	0.84	0.17	43,47,48,49	0
5	GOL	B	302	6/6	0.84	0.18	35,40,42,45	0
5	GOL	A	302	6/6	0.84	0.22	43,48,49,50	0
5	GOL	D	303	6/6	0.84	0.25	44,47,50,53	0
5	GOL	B	301	6/6	0.85	0.12	25,28,29,30	0
5	GOL	B	304	6/6	0.86	0.21	39,46,46,50	0
5	GOL	D	301	6/6	0.86	0.16	25,30,32,33	0
5	GOL	D	306	6/6	0.87	0.20	25,29,31,33	0
5	GOL	C	301	6/6	0.88	0.15	27,29,32,33	0
5	GOL	D	304	6/6	0.90	0.14	30,37,39,41	0
4	AZM	C	263	13/13	0.93	0.16	29,36,45,48	0
7	PO4	B	600	5/5	0.93	0.17	43,46,47,48	0
7	PO4	C	600	5/5	0.93	0.15	38,41,42,42	0
4	AZM	A	263	13/13	0.94	0.15	22,32,43,45	0
4	AZM	D	263	13/13	0.94	0.16	22,33,45,47	0
4	AZM	B	263	13/13	0.94	0.15	24,33,45,48	0
7	PO4	D	600	5/5	0.95	0.15	38,41,42,42	0
7	PO4	A	600	5/5	0.96	0.15	31,34,35,36	0
7	PO4	A	601	5/5	0.96	0.20	64,65,65,65	0
3	ZN	C	262	1/1	1.00	0.02	14,14,14,14	0
3	ZN	D	262	1/1	1.00	0.03	12,12,12,12	0
3	ZN	A	262	1/1	1.00	0.03	11,11,11,11	0
3	ZN	B	262	1/1	1.00	0.02	13,13,13,13	0

6.5 Other polymers [\(i\)](#)

There are no such residues in this entry.