



Full wwPDB X-ray Structure Validation Report ⓘ

Jul 18, 2023 – 08:11 PM JST

PDB ID : 8I4Q
Title : Crystal structure of 6-phosphogluconate dehydrogenase from *Corynebacterium glutamicum*
Authors : Yu, H.; Kim, K.-J.
Deposited on : 2023-01-20
Resolution : 1.90 Å(reported)

This is a Full wwPDB X-ray Structure Validation Report for a publicly released PDB entry.

We welcome your comments at validation@mail.wwpdb.org

A user guide is available at

<https://www.wwpdb.org/validation/2017/XrayValidationReportHelp>

with specific help available everywhere you see the ⓘ symbol.

The types of validation reports are described at

<http://www.wwpdb.org/validation/2017/FAQs#types>.

The following versions of software and data (see [references ⓘ](#)) were used in the production of this report:

MolProbity : 4.02b-467
Mogul : 1.8.5 (274361), CSD as541be (2020)
Xtriage (Phenix) : 1.13
EDS : 2.34
buster-report : 1.1.7 (2018)
Percentile statistics : 20191225.v01 (using entries in the PDB archive December 25th 2019)
Refmac : 5.8.0158
CCP4 : 7.0.044 (Gargrove)
Ideal geometry (proteins) : Engh & Huber (2001)
Ideal geometry (DNA, RNA) : Parkinson et al. (1996)
Validation Pipeline (wwPDB-VP) : 2.34

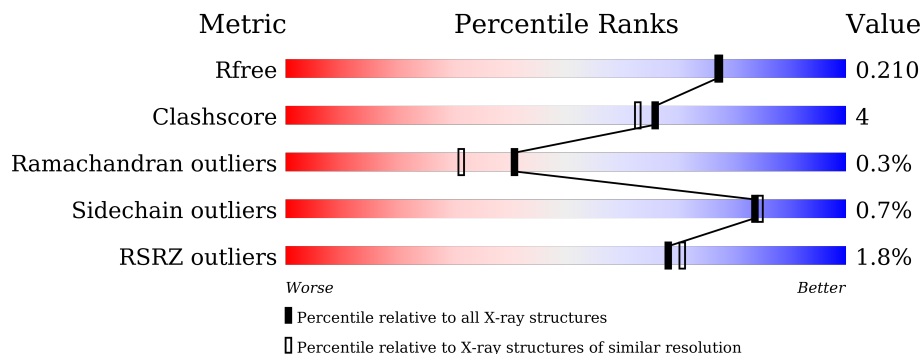
1 Overall quality at a glance

The following experimental techniques were used to determine the structure:

X-RAY DIFFRACTION

The reported resolution of this entry is 1.90 Å.

Percentile scores (ranging between 0-100) for global validation metrics of the entry are shown in the following graphic. The table shows the number of entries on which the scores are based.



Metric	Whole archive (#Entries)	Similar resolution (#Entries, resolution range(Å))
R_{free}	130704	6207 (1.90-1.90)
Clashscore	141614	6847 (1.90-1.90)
Ramachandran outliers	138981	6760 (1.90-1.90)
Sidechain outliers	138945	6760 (1.90-1.90)
RSRZ outliers	127900	6082 (1.90-1.90)

The table below summarises the geometric issues observed across the polymeric chains and their fit to the electron density. The red, orange, yellow and green segments of the lower bar indicate the fraction of residues that contain outliers for ≥ 3 , 2, 1 and 0 types of geometric quality criteria respectively. A grey segment represents the fraction of residues that are not modelled. The numeric value for each fraction is indicated below the corresponding segment, with a dot representing fractions $\leq 5\%$. The upper red bar (where present) indicates the fraction of residues that have poor fit to the electron density. The numeric value is given above the bar.

Mol	Chain	Length	Quality of chain
1	A	492	 92% 5%
1	B	492	 90% 7%

The following table lists non-polymeric compounds, carbohydrate monomers and non-standard residues in protein, DNA, RNA chains that are outliers for geometric or electron-density-fit criteria:

Mol	Type	Chain	Res	Chirality	Geometry	Clashes	Electron density
3	TRS	A	503	-	-	X	-
3	TRS	B	502	-	-	X	-

2 Entry composition [i](#)

There are 5 unique types of molecules in this entry. The entry contains 8011 atoms, of which 0 are hydrogens and 0 are deuteriums.

In the tables below, the ZeroOcc column contains the number of atoms modelled with zero occupancy, the AltConf column contains the number of residues with at least one atom in alternate conformation and the Trace column contains the number of residues modelled with at most 2 atoms.

- Molecule 1 is a protein called 6-phosphogluconate dehydrogenase, decarboxylating.

Mol	Chain	Residues	Atoms					ZeroOcc	AltConf	Trace
			Total	C	N	O	S			
1	A	479	3609	2265	626	709	9	0	0	0
1	B	479	3609	2265	626	709	9	0	0	0

There are 16 discrepancies between the modelled and reference sequences:

Chain	Residue	Modelled	Actual	Comment	Reference
A	485	LEU	-	expression tag	UNP Q8NQI2
A	486	GLU	-	expression tag	UNP Q8NQI2
A	487	HIS	-	expression tag	UNP Q8NQI2
A	488	HIS	-	expression tag	UNP Q8NQI2
A	489	HIS	-	expression tag	UNP Q8NQI2
A	490	HIS	-	expression tag	UNP Q8NQI2
A	491	HIS	-	expression tag	UNP Q8NQI2
A	492	HIS	-	expression tag	UNP Q8NQI2
B	485	LEU	-	expression tag	UNP Q8NQI2
B	486	GLU	-	expression tag	UNP Q8NQI2
B	487	HIS	-	expression tag	UNP Q8NQI2
B	488	HIS	-	expression tag	UNP Q8NQI2
B	489	HIS	-	expression tag	UNP Q8NQI2
B	490	HIS	-	expression tag	UNP Q8NQI2
B	491	HIS	-	expression tag	UNP Q8NQI2
B	492	HIS	-	expression tag	UNP Q8NQI2

- Molecule 2 is NADP NICOTINAMIDE-ADENINE-DINUCLEOTIDE PHOSPHATE (three-letter code: NAP) (formula: C₂₁H₂₈N₇O₁₇P₃) (labeled as "Ligand of Interest" by depositor).

Continued from previous page...

Mol	Chain	Residues	Atoms				ZeroOcc	AltConf
3	A	1	Total	C	N	O	0	0
			8	4	1	3		
3	A	1	Total	C	N	O	0	0
			8	4	1	3		
3	B	1	Total	C	N	O	0	0
			8	4	1	3		
3	B	1	Total	C	N	O	0	0
			8	4	1	3		

- Molecule 4 is MAGNESIUM ION (three-letter code: MG) (formula: Mg).

Mol	Chain	Residues	Atoms		ZeroOcc	AltConf
4	A	2	Total	Mg	0	0
			2	2		
4	B	5	Total	Mg	0	0
			5	5		

- Molecule 5 is water.

Mol	Chain	Residues	Atoms		ZeroOcc	AltConf
5	A	327	Total	O	0	0
			327	327		
5	B	323	Total	O	0	0
			323	323		

4 Data and refinement statistics

Property	Value	Source
Space group	P 21 21 21	Depositor
Cell constants a, b, c, α , β , γ	64.00Å 119.47Å 153.45Å 90.00° 90.00° 90.00°	Depositor
Resolution (Å)	33.84 – 1.90 33.81 – 1.90	Depositor EDS
% Data completeness (in resolution range)	98.9 (33.84-1.90) 99.0 (33.81-1.90)	Depositor EDS
R_{merge}	0.08	Depositor
R_{sym}	(Not available)	Depositor
$\langle I/\sigma(I) \rangle$ ¹	5.49 (at 1.89Å)	Xtrriage
Refinement program	REFMAC 5.8.0258	Depositor
R, R_{free}	0.164 , 0.202 0.176 , 0.210	Depositor DCC
R_{free} test set	4680 reflections (5.06%)	wwPDB-VP
Wilson B-factor (Å ²)	20.7	Xtrriage
Anisotropy	0.031	Xtrriage
Bulk solvent k_{sol} (e/Å ³), B_{sol} (Å ²)	0.39 , 43.0	EDS
L-test for twinning ²	$\langle L \rangle = 0.48$, $\langle L^2 \rangle = 0.32$	Xtrriage
Estimated twinning fraction	No twinning to report.	Xtrriage
F_o, F_c correlation	0.95	EDS
Total number of atoms	8011	wwPDB-VP
Average B, all atoms (Å ²)	24.0	wwPDB-VP

Xtrriage's analysis on translational NCS is as follows: *The largest off-origin peak in the Patterson function is 3.32% of the height of the origin peak. No significant pseudotranslation is detected.*

¹Intensities estimated from amplitudes.

²Theoretical values of $\langle |L| \rangle$, $\langle L^2 \rangle$ for acentric reflections are 0.5, 0.333 respectively for untwinned datasets, and 0.375, 0.2 for perfectly twinned datasets.

5 Model quality [i](#)

5.1 Standard geometry [i](#)

Bond lengths and bond angles in the following residue types are not validated in this section: MG, TRS, NAP

The Z score for a bond length (or angle) is the number of standard deviations the observed value is removed from the expected value. A bond length (or angle) with $|Z| > 5$ is considered an outlier worth inspection. RMSZ is the root-mean-square of all Z scores of the bond lengths (or angles).

Mol	Chain	Bond lengths		Bond angles	
		RMSZ	# Z >5	RMSZ	# Z >5
1	A	0.79	0/3673	0.88	6/4985 (0.1%)
1	B	0.79	0/3673	0.90	7/4985 (0.1%)
All	All	0.79	0/7346	0.89	13/9970 (0.1%)

There are no bond length outliers.

All (13) bond angle outliers are listed below:

Mol	Chain	Res	Type	Atoms	Z	Observed(°)	Ideal(°)
1	A	24	ARG	NE-CZ-NH1	-9.10	115.75	120.30
1	A	441	ARG	NE-CZ-NH2	-8.89	115.85	120.30
1	B	24	ARG	NE-CZ-NH1	-8.41	116.09	120.30
1	A	441	ARG	NE-CZ-NH1	7.94	124.27	120.30
1	B	441	ARG	NE-CZ-NH2	-7.66	116.47	120.30
1	A	24	ARG	NE-CZ-NH2	6.66	123.63	120.30
1	B	441	ARG	NE-CZ-NH1	5.68	123.14	120.30
1	B	331	ARG	NE-CZ-NH2	-5.51	117.54	120.30
1	B	24	ARG	NE-CZ-NH2	5.34	122.97	120.30
1	A	73	ARG	NE-CZ-NH1	5.32	122.96	120.30
1	A	73	ARG	NE-CZ-NH2	-5.22	117.69	120.30
1	B	415	ARG	NE-CZ-NH2	-5.09	117.76	120.30
1	B	454	ARG	NE-CZ-NH2	-5.08	117.76	120.30

There are no chirality outliers.

There are no planarity outliers.

5.2 Too-close contacts [i](#)

In the following table, the Non-H and H(model) columns list the number of non-hydrogen atoms and hydrogen atoms in the chain respectively. The H(added) column lists the number of hydrogen

atoms added and optimized by MolProbity. The Clashes column lists the number of clashes within the asymmetric unit, whereas Symm-Clashes lists symmetry-related clashes.

Mol	Chain	Non-H	H(model)	H(added)	Clashes	Symm-Clashes
1	A	3609	0	3538	31	0
1	B	3609	0	3538	28	0
2	A	48	0	25	2	0
2	B	48	0	25	1	0
3	A	24	0	36	11	0
3	B	16	0	24	9	0
4	A	2	0	0	0	0
4	B	5	0	0	0	0
5	A	327	0	0	2	0
5	B	323	0	0	2	0
All	All	8011	0	7186	58	0

The all-atom clashscore is defined as the number of clashes found per 1000 atoms (including hydrogen atoms). The all-atom clashscore for this structure is 4.

All (58) close contacts within the same asymmetric unit are listed below, sorted by their clash magnitude.

Atom-1	Atom-2	Interatomic distance (Å)	Clash overlap (Å)
1:A:232:ASP:OD2	3:A:503:TRS:H12	1.46	1.16
1:A:232:ASP:OD2	3:A:503:TRS:C1	1.96	1.14
1:B:443:GLU:H	3:B:502:TRS:H12	1.41	0.86
1:A:232:ASP:OD2	3:A:503:TRS:H11	1.81	0.80
1:A:263:GLY:HA3	5:A:850:HOH:O	1.82	0.79
1:A:232:ASP:OD2	3:A:503:TRS:H32	1.84	0.78
1:B:24:ARG:HD2	1:B:53:GLU:OE1	1.86	0.74
1:A:24:ARG:HD2	1:A:53:GLU:OE1	1.88	0.72
1:B:18:MET:HG3	2:B:501:NAP:H1D	1.72	0.71
1:B:80:GLN:O	1:B:85:THR:HG23	1.90	0.71
1:A:264:GLN:HE22	1:A:269:ARG:HD3	1.55	0.71
1:A:264:GLN:NE2	1:A:269:ARG:HD3	2.06	0.70
1:A:232:ASP:OD1	3:A:503:TRS:H31	1.95	0.66
1:B:441:ARG:NH2	5:B:602:HOH:O	2.30	0.64
1:B:455:ASP:OD1	1:B:472:HIS:HD2	1.80	0.63
2:A:501:NAP:O5D	2:A:501:NAP:H51A	2.00	0.61
1:A:232:ASP:CG	3:A:503:TRS:H12	2.19	0.60
1:A:232:ASP:OD1	3:A:503:TRS:C3	2.50	0.59
1:A:269:ARG:NH1	1:B:277:ASP:OD1	2.36	0.59
1:A:232:ASP:OD2	3:A:503:TRS:C3	2.50	0.58
1:A:133:SER:OG	1:A:144:SER:HB3	2.04	0.58

Continued on next page...

Continued from previous page...

Atom-1	Atom-2	Interatomic distance (Å)	Clash overlap (Å)
1:B:24:ARG:CD	1:B:53:GLU:OE1	2.52	0.57
1:A:24:ARG:CD	1:A:53:GLU:OE1	2.53	0.56
1:A:263:GLY:CA	5:A:850:HOH:O	2.44	0.56
1:B:15:LEU:H	1:B:37:ASN:ND2	2.04	0.56
1:A:455:ASP:OD1	1:A:472:HIS:HD2	1.90	0.55
1:B:24:ARG:HD3	1:B:50:HIS:HB3	1.87	0.55
1:B:133:SER:OG	1:B:144:SER:HB3	2.08	0.54
1:B:334:LEU:C	1:B:334:LEU:HD23	2.29	0.54
1:B:62:VAL:HG21	1:B:91:GLN:HE21	1.73	0.54
1:A:232:ASP:CG	3:A:503:TRS:H32	2.29	0.53
1:A:18:MET:HG3	2:A:501:NAP:H1D	1.91	0.52
1:A:24:ARG:HD3	1:A:50:HIS:HB3	1.91	0.52
1:A:206:HIS:HE1	3:B:502:TRS:O3	1.92	0.51
1:A:307:ASN:O	1:B:403:LYS:HD3	2.11	0.51
1:A:113:THR:OG1	1:A:184:HIS:HD2	1.94	0.50
1:B:442:ALA:CB	3:B:502:TRS:H32	2.42	0.50
1:B:456:PHE:HA	1:B:475:TRP:CD1	2.47	0.49
1:B:123:ARG:HH11	1:B:123:ARG:HB3	1.77	0.49
1:A:232:ASP:CG	3:A:503:TRS:C3	2.82	0.48
1:B:442:ALA:HB1	3:B:502:TRS:H31	1.96	0.48
1:A:456:PHE:HA	1:A:475:TRP:CD1	2.49	0.47
1:A:63:GLU:H	1:A:63:GLU:CD	2.19	0.46
1:B:334:LEU:HD23	1:B:334:LEU:O	2.15	0.46
1:A:113:THR:OG1	1:A:184:HIS:CD2	2.69	0.45
1:B:11:GLY:HA2	1:B:34:ALA:O	2.17	0.45
1:A:15:LEU:H	1:A:37:ASN:ND2	2.14	0.45
1:B:442:ALA:HA	3:B:502:TRS:H32	1.98	0.44
1:B:329:ASP:HA	1:B:412:SER:HB3	2.00	0.44
1:B:442:ALA:HA	3:B:502:TRS:H11	1.99	0.44
1:A:334:LEU:HD23	1:A:334:LEU:O	2.18	0.44
1:B:443:GLU:N	3:B:502:TRS:H12	2.23	0.42
1:B:10:ILE:HD13	1:B:160:LEU:HD23	2.00	0.42
1:B:369:TRP:HA	1:B:373:CYS:SG	2.61	0.41
1:A:232:ASP:OD2	3:A:503:TRS:C	2.67	0.41
1:A:265:LYS:HG2	5:B:731:HOH:O	2.20	0.40
1:B:442:ALA:CB	3:B:502:TRS:C3	2.99	0.40
1:B:442:ALA:HB1	3:B:502:TRS:C3	2.51	0.40

There are no symmetry-related clashes.

5.3 Torsion angles [i](#)

5.3.1 Protein backbone [i](#)

In the following table, the Percentiles column shows the percent Ramachandran outliers of the chain as a percentile score with respect to all X-ray entries followed by that with respect to entries of similar resolution.

The Analysed column shows the number of residues for which the backbone conformation was analysed, and the total number of residues.

Mol	Chain	Analysed	Favoured	Allowed	Outliers	Percentiles	
1	A	477/492 (97%)	465 (98%)	10 (2%)	2 (0%)	34	24
1	B	477/492 (97%)	465 (98%)	11 (2%)	1 (0%)	47	38
All	All	954/984 (97%)	930 (98%)	21 (2%)	3 (0%)	41	31

All (3) Ramachandran outliers are listed below:

Mol	Chain	Res	Type
1	A	180	ASP
1	A	232	ASP
1	B	263	GLY

5.3.2 Protein sidechains [i](#)

In the following table, the Percentiles column shows the percent sidechain outliers of the chain as a percentile score with respect to all X-ray entries followed by that with respect to entries of similar resolution.

The Analysed column shows the number of residues for which the sidechain conformation was analysed, and the total number of residues.

Mol	Chain	Analysed	Rotameric	Outliers	Percentiles	
1	A	367/379 (97%)	365 (100%)	2 (0%)	88	89
1	B	367/379 (97%)	364 (99%)	3 (1%)	81	82
All	All	734/758 (97%)	729 (99%)	5 (1%)	84	84

All (5) residues with a non-rotameric sidechain are listed below:

Mol	Chain	Res	Type
1	A	190	HIS
1	A	417	ILE
1	B	6	ASN

Continued on next page...

Continued from previous page...

Mol	Chain	Res	Type
1	B	109	LEU
1	B	190	HIS

Sometimes sidechains can be flipped to improve hydrogen bonding and reduce clashes. All (18) such sidechains are listed below:

Mol	Chain	Res	Type
1	A	29	ASN
1	A	37	ASN
1	A	184	HIS
1	A	190	HIS
1	A	191	ASN
1	A	206	HIS
1	A	264	GLN
1	A	305	GLN
1	A	472	HIS
1	B	6	ASN
1	B	29	ASN
1	B	37	ASN
1	B	91	GLN
1	B	107	ASN
1	B	126	HIS
1	B	184	HIS
1	B	190	HIS
1	B	472	HIS

5.3.3 RNA [i](#)

There are no RNA molecules in this entry.

5.4 Non-standard residues in protein, DNA, RNA chains [i](#)

There are no non-standard protein/DNA/RNA residues in this entry.

5.5 Carbohydrates [i](#)

There are no monosaccharides in this entry.

5.6 Ligand geometry

Of 14 ligands modelled in this entry, 7 are monoatomic - leaving 7 for Mogul analysis.

In the following table, the Counts columns list the number of bonds (or angles) for which Mogul statistics could be retrieved, the number of bonds (or angles) that are observed in the model and the number of bonds (or angles) that are defined in the Chemical Component Dictionary. The Link column lists molecule types, if any, to which the group is linked. The Z score for a bond length (or angle) is the number of standard deviations the observed value is removed from the expected value. A bond length (or angle) with $|Z| > 2$ is considered an outlier worth inspection. RMSZ is the root-mean-square of all Z scores of the bond lengths (or angles).

Mol	Type	Chain	Res	Link	Bond lengths			Bond angles		
					Counts	RMSZ	# Z > 2	Counts	RMSZ	# Z > 2
2	NAP	A	501	-	45,52,52	0.94	2 (4%)	56,80,80	0.96	2 (3%)
3	TRS	B	503	-	7,7,7	0.40	0	9,9,9	0.52	0
3	TRS	A	503	-	7,7,7	0.50	0	9,9,9	0.87	1 (11%)
3	TRS	B	502	-	7,7,7	0.19	0	9,9,9	0.90	0
2	NAP	B	501	-	45,52,52	0.85	2 (4%)	56,80,80	1.18	4 (7%)
3	TRS	A	504	-	7,7,7	0.16	0	9,9,9	0.20	0
3	TRS	A	502	-	7,7,7	0.15	0	9,9,9	0.22	0

In the following table, the Chirals column lists the number of chiral outliers, the number of chiral centers analysed, the number of these observed in the model and the number defined in the Chemical Component Dictionary. Similar counts are reported in the Torsion and Rings columns. '-' means no outliers of that kind were identified.

Mol	Type	Chain	Res	Link	Chirals	Torsions	Rings
2	NAP	A	501	-	-	7/31/67/67	0/5/5/5
3	TRS	B	503	-	-	5/9/9/9	-
3	TRS	A	503	-	-	5/9/9/9	-
3	TRS	B	502	-	-	9/9/9/9	-
2	NAP	B	501	-	-	12/31/67/67	0/5/5/5
3	TRS	A	504	-	-	9/9/9/9	-
3	TRS	A	502	-	-	5/9/9/9	-

All (4) bond length outliers are listed below:

Mol	Chain	Res	Type	Atoms	Z	Observed(Å)	Ideal(Å)
2	A	501	NAP	C2N-N1N	3.67	1.39	1.35
2	B	501	NAP	C2N-N1N	3.01	1.38	1.35
2	A	501	NAP	O4D-C1D	3.00	1.45	1.41
2	B	501	NAP	P2B-O2B	2.68	1.64	1.59

All (7) bond angle outliers are listed below:

Mol	Chain	Res	Type	Atoms	Z	Observed(°)	Ideal(°)
2	B	501	NAP	C6N-N1N-C2N	-4.83	117.57	121.97
2	A	501	NAP	C6N-N1N-C2N	-3.75	118.56	121.97
2	B	501	NAP	O2B-P2B-O1X	-3.61	95.44	109.39
2	B	501	NAP	O4D-C1D-C2D	-2.74	102.92	106.93
2	B	501	NAP	O4B-C1B-C2B	-2.58	102.11	106.59
2	A	501	NAP	C5A-C6A-N6A	2.43	124.04	120.35
3	A	503	TRS	O1-C1-C	2.23	118.06	111.00

There are no chirality outliers.

All (52) torsion outliers are listed below:

Mol	Chain	Res	Type	Atoms
2	A	501	NAP	C5B-O5B-PA-O1A
2	A	501	NAP	C5B-O5B-PA-O3
2	B	501	NAP	C2B-O2B-P2B-O1X
2	B	501	NAP	C5D-O5D-PN-O3
2	B	501	NAP	C5D-O5D-PN-O2N
2	B	501	NAP	O4D-C4D-C5D-O5D
2	B	501	NAP	C3D-C4D-C5D-O5D
2	B	501	NAP	C2D-C1D-N1N-C2N
2	B	501	NAP	C2D-C1D-N1N-C6N
3	A	503	TRS	C1-C-C3-O3
3	A	503	TRS	C2-C-C3-O3
3	A	503	TRS	N-C-C3-O3
3	A	504	TRS	C3-C-C1-O1
3	A	504	TRS	N-C-C1-O1
3	A	504	TRS	N-C-C2-O2
3	A	504	TRS	N-C-C3-O3
3	B	502	TRS	C1-C-C2-O2
3	B	502	TRS	C3-C-C2-O2
3	B	502	TRS	N-C-C2-O2
3	B	502	TRS	C1-C-C3-O3
3	B	502	TRS	C2-C-C3-O3
3	B	503	TRS	N-C-C1-O1
3	B	503	TRS	N-C-C3-O3
2	B	501	NAP	C2N-C3N-C7N-O7N
2	B	501	NAP	C4N-C3N-C7N-N7N
2	B	501	NAP	C2N-C3N-C7N-N7N
2	B	501	NAP	C4N-C3N-C7N-O7N
3	A	504	TRS	C1-C-C2-O2
3	A	504	TRS	C2-C-C3-O3

Continued on next page...

Continued from previous page...

Mol	Chain	Res	Type	Atoms
3	B	503	TRS	C3-C-C1-O1
3	B	503	TRS	C2-C-C3-O3
2	A	501	NAP	C2B-O2B-P2B-O2X
3	A	502	TRS	C2-C-C1-O1
3	A	502	TRS	N-C-C1-O1
3	A	504	TRS	C2-C-C1-O1
3	B	502	TRS	C3-C-C1-O1
3	B	502	TRS	N-C-C1-O1
3	B	502	TRS	N-C-C3-O3
2	A	501	NAP	C5B-O5B-PA-O2A
3	A	502	TRS	C3-C-C1-O1
3	A	502	TRS	C2-C-C3-O3
3	A	504	TRS	C1-C-C3-O3
3	B	502	TRS	C2-C-C1-O1
2	A	501	NAP	C3D-C4D-C5D-O5D
2	A	501	NAP	C2B-O2B-P2B-O3X
2	B	501	NAP	C2B-O2B-P2B-O2X
3	A	502	TRS	C1-C-C3-O3
3	A	503	TRS	N-C-C1-O1
3	A	503	TRS	C1-C-C2-O2
3	A	504	TRS	C3-C-C2-O2
3	B	503	TRS	C1-C-C3-O3
2	A	501	NAP	C5D-O5D-PN-O1N

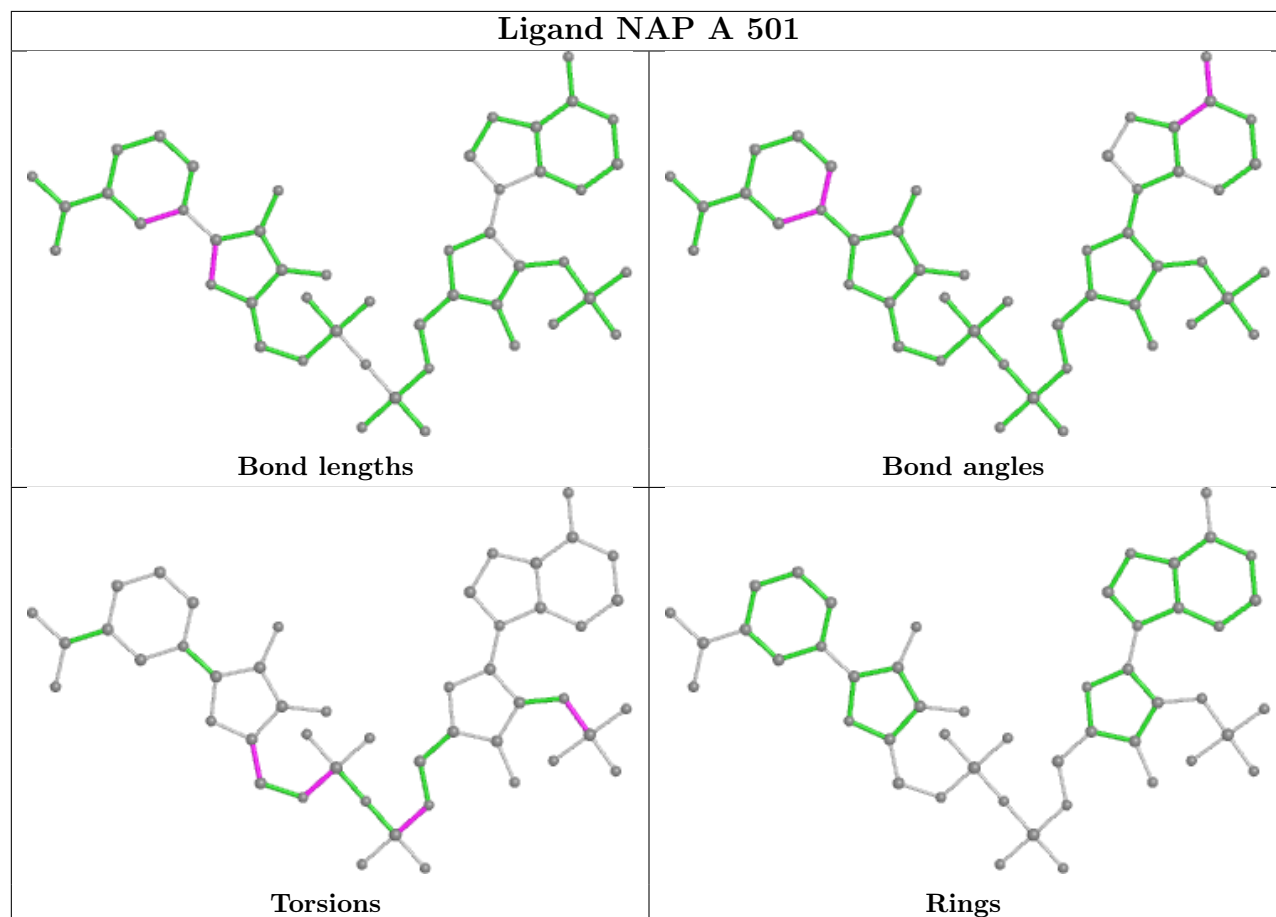
There are no ring outliers.

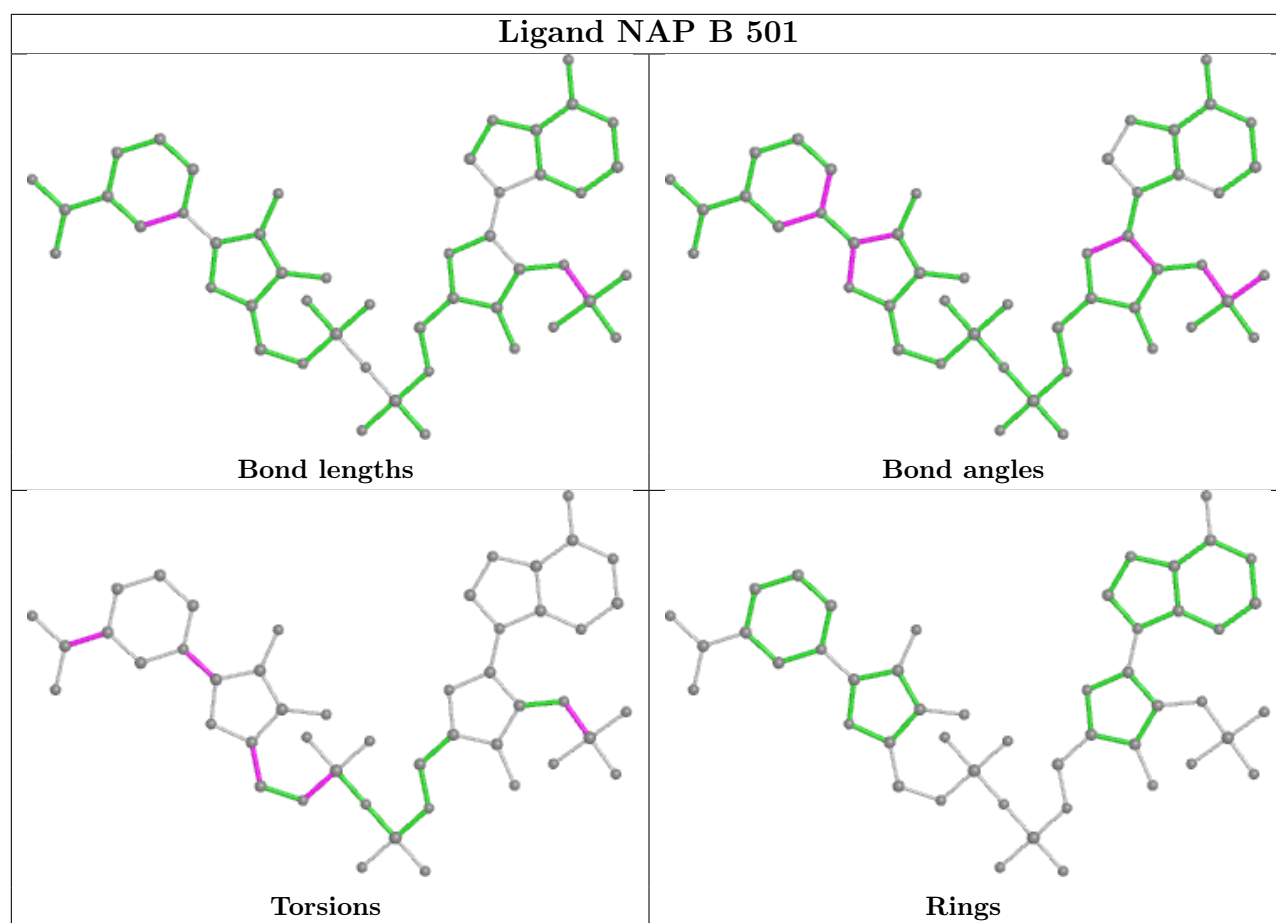
4 monomers are involved in 23 short contacts:

Mol	Chain	Res	Type	Clashes	Symm-Clashes
2	A	501	NAP	2	0
3	A	503	TRS	11	0
3	B	502	TRS	9	0
2	B	501	NAP	1	0

The following is a two-dimensional graphical depiction of Mogul quality analysis of bond lengths, bond angles, torsion angles, and ring geometry for all instances of the Ligand of Interest. In addition, ligands with molecular weight > 250 and outliers as shown on the validation Tables will also be included. For torsion angles, if less than 5% of the Mogul distribution of torsion angles is within 10 degrees of the torsion angle in question, then that torsion angle is considered an outlier. Any bond that is central to one or more torsion angles identified as an outlier by Mogul will be highlighted in the graph. For rings, the root-mean-square deviation (RMSD) between the ring in question and similar rings identified by Mogul is calculated over all ring torsion angles. If the average RMSD is greater than 60 degrees and the minimal RMSD between the ring in question and

any Mogul-identified rings is also greater than 60 degrees, then that ring is considered an outlier. The outliers are highlighted in purple. The color gray indicates Mogul did not find sufficient equivalents in the CSD to analyse the geometry.





5.7 Other polymers [\(i\)](#)

There are no such residues in this entry.

5.8 Polymer linkage issues [\(i\)](#)

There are no chain breaks in this entry.

6 Fit of model and data [i](#)

6.1 Protein, DNA and RNA chains [i](#)

In the following table, the column labelled ‘#RSRZ > 2’ contains the number (and percentage) of RSRZ outliers, followed by percent RSRZ outliers for the chain as percentile scores relative to all X-ray entries and entries of similar resolution. The OWAB column contains the minimum, median, 95th percentile and maximum values of the occupancy-weighted average B-factor per residue. The column labelled ‘Q < 0.9’ lists the number of (and percentage) of residues with an average occupancy less than 0.9.

Mol	Chain	Analysed	<RSRZ>	#RSRZ>2	OWAB(Å ²)	Q<0.9
1	A	479/492 (97%)	-0.09	7 (1%) 73 76	12, 20, 36, 87	0
1	B	479/492 (97%)	-0.01	10 (2%) 63 66	11, 21, 39, 85	0
All	All	958/984 (97%)	-0.05	17 (1%) 68 71	11, 20, 38, 87	0

All (17) RSRZ outliers are listed below:

Mol	Chain	Res	Type	RSRZ
1	B	263	GLY	6.8
1	B	265	LYS	4.8
1	A	263	GLY	4.7
1	B	6	ASN	4.7
1	A	265	LYS	4.1
1	A	6	ASN	3.9
1	A	264	GLN	3.9
1	B	264	GLN	3.7
1	B	7	LEU	2.9
1	A	484	ALA	2.7
1	B	71	LYS	2.5
1	B	122	ALA	2.5
1	B	429	VAL	2.2
1	B	98	GLU	2.2
1	B	118	LYS	2.2
1	A	429	VAL	2.0
1	A	340	VAL	2.0

6.2 Non-standard residues in protein, DNA, RNA chains [i](#)

There are no non-standard protein/DNA/RNA residues in this entry.

6.3 Carbohydrates [i](#)

There are no monosaccharides in this entry.

6.4 Ligands [i](#)

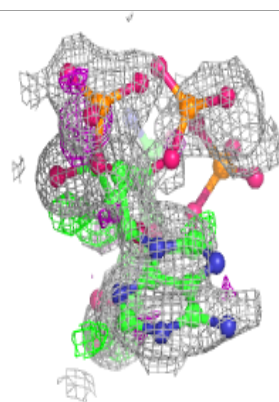
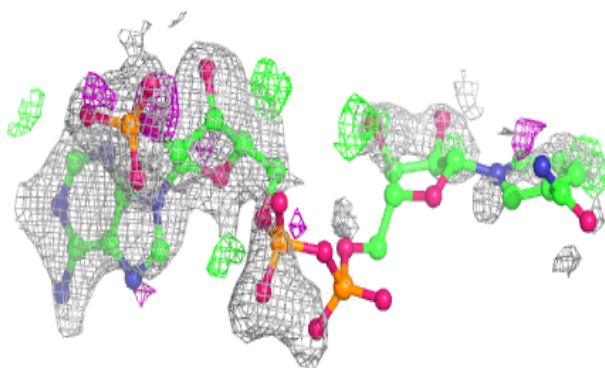
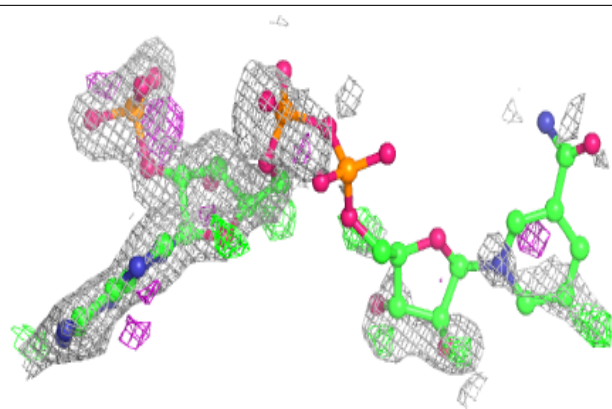
In the following table, the Atoms column lists the number of modelled atoms in the group and the number defined in the chemical component dictionary. The B-factors column lists the minimum, median, 95th percentile and maximum values of B factors of atoms in the group. The column labelled 'Q< 0.9' lists the number of atoms with occupancy less than 0.9.

Mol	Type	Chain	Res	Atoms	RSCC	RSR	B-factors(Å ²)	Q<0.9
3	TRS	B	503	8/8	0.72	0.28	32,39,44,49	0
2	NAP	B	501	48/48	0.73	0.36	44,101,158,185	0
3	TRS	A	504	8/8	0.77	0.24	52,55,59,61	0
3	TRS	A	502	8/8	0.78	0.35	47,65,69,69	0
3	TRS	A	503	8/8	0.79	0.21	31,32,37,43	0
3	TRS	B	502	8/8	0.88	0.19	21,32,34,52	0
2	NAP	A	501	48/48	0.92	0.19	25,81,112,119	0
4	MG	B	508	1/1	0.92	0.14	32,32,32,32	0
4	MG	B	505	1/1	0.93	0.10	35,35,35,35	0
4	MG	B	507	1/1	0.96	0.14	33,33,33,33	0
4	MG	B	506	1/1	0.96	0.09	27,27,27,27	0
4	MG	A	505	1/1	0.97	0.15	29,29,29,29	0
4	MG	B	504	1/1	0.97	0.13	30,30,30,30	0
4	MG	A	506	1/1	0.98	0.08	23,23,23,23	0

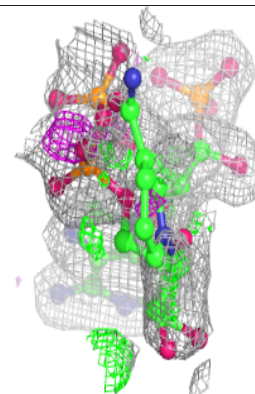
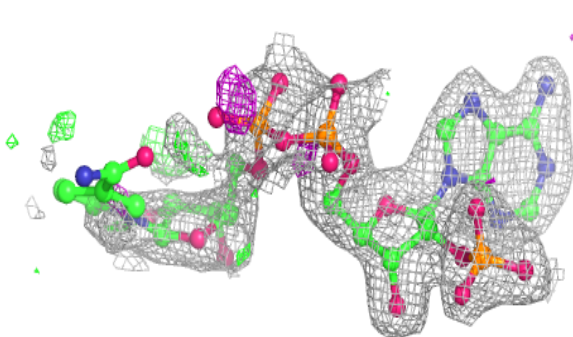
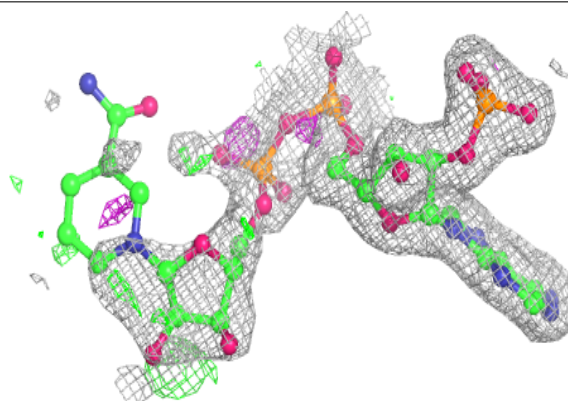
The following is a graphical depiction of the model fit to experimental electron density of all instances of the Ligand of Interest. In addition, ligands with molecular weight > 250 and outliers as shown on the geometry validation Tables will also be included. Each fit is shown from different orientation to approximate a three-dimensional view.

Electron density around NAP B 501:

$2mF_o-DF_c$ (at 0.7 rmsd) in gray
 mF_o-DF_c (at 3 rmsd) in purple (negative)
and green (positive)

**Electron density around NAP A 501:**

$2mF_o-DF_c$ (at 0.7 rmsd) in gray
 mF_o-DF_c (at 3 rmsd) in purple (negative)
and green (positive)



6.5 Other polymers [i](#)

There are no such residues in this entry.