



Full wwPDB X-ray Structure Validation Report ⓘ

Sep 19, 2023 – 11:10 AM EDT

PDB ID : 5I1W
Title : Crystal structure of CrmK, a flavoenzyme involved in the shunt product recycling mechanism in caerulomycin biosynthesis
Authors : Picard, M.-E.; Barma, J.; Shi, R.
Deposited on : 2016-02-07
Resolution : 2.15 Å(reported)

This is a Full wwPDB X-ray Structure Validation Report for a publicly released PDB entry.

We welcome your comments at validation@mail.wwpdb.org

A user guide is available at

<https://www.wwpdb.org/validation/2017/XrayValidationReportHelp>

with specific help available everywhere you see the ⓘ symbol.

The types of validation reports are described at

<http://www.wwpdb.org/validation/2017/FAQs#types>.

The following versions of software and data (see [references ⓘ](#)) were used in the production of this report:

MolProbity : 4.02b-467
Mogul : 1.8.5 (274361), CSD as541be (2020)
Xtriage (Phenix) : 1.13
EDS : 2.35.1
buster-report : 1.1.7 (2018)
Percentile statistics : 20191225.v01 (using entries in the PDB archive December 25th 2019)
Refmac : 5.8.0158
CCP4 : 7.0.044 (Gargrove)
Ideal geometry (proteins) : Engh & Huber (2001)
Ideal geometry (DNA, RNA) : Parkinson et al. (1996)
Validation Pipeline (wwPDB-VP) : 2.35.1

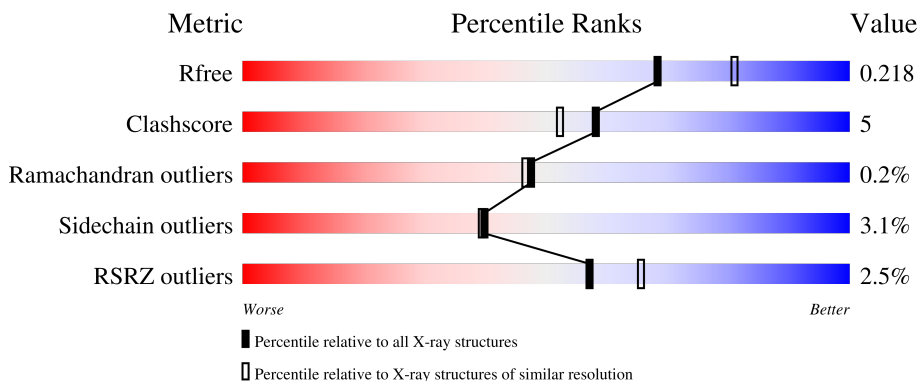
1 Overall quality at a glance

The following experimental techniques were used to determine the structure:

X-RAY DIFFRACTION

The reported resolution of this entry is 2.15 Å.

Percentile scores (ranging between 0-100) for global validation metrics of the entry are shown in the following graphic. The table shows the number of entries on which the scores are based.



Metric	Whole archive (#Entries)	Similar resolution (#Entries, resolution range(Å))
R_{free}	130704	1479 (2.16-2.16)
Clashscore	141614	1585 (2.16-2.16)
Ramachandran outliers	138981	1560 (2.16-2.16)
Sidechain outliers	138945	1559 (2.16-2.16)
RSRZ outliers	127900	1456 (2.16-2.16)

The table below summarises the geometric issues observed across the polymeric chains and their fit to the electron density. The red, orange, yellow and green segments of the lower bar indicate the fraction of residues that contain outliers for ≥ 3 , 2, 1 and 0 types of geometric quality criteria respectively. A grey segment represents the fraction of residues that are not modelled. The numeric value for each fraction is indicated below the corresponding segment, with a dot representing fractions $\leq 5\%$. The upper red bar (where present) indicates the fraction of residues that have poor fit to the electron density. The numeric value is given above the bar.

Mol	Chain	Length	Quality of chain
1	A	500	 88% 11%
1	B	500	 86% 12%
1	C	500	 88% 10%
1	D	500	 89% 9%

The following table lists non-polymeric compounds, carbohydrate monomers and non-standard

residues in protein, DNA, RNA chains that are outliers for geometric or electron-density-fit criteria:

Mol	Type	Chain	Res	Chirality	Geometry	Clashes	Electron density
4	67K	D	602	-	X	-	-

2 Entry composition [i](#)

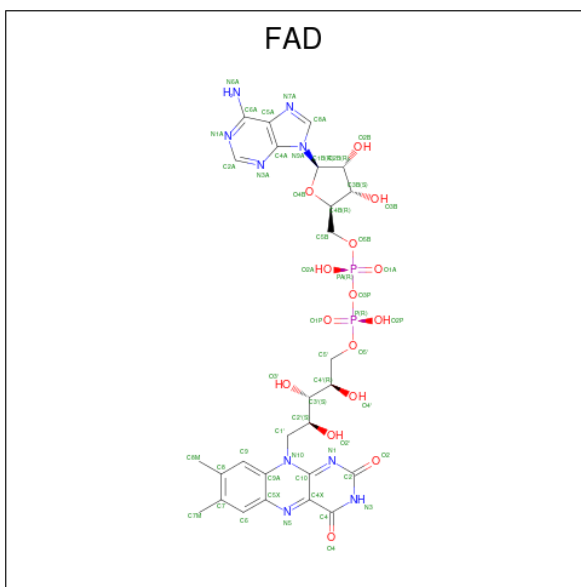
There are 5 unique types of molecules in this entry. The entry contains 16449 atoms, of which 0 are hydrogens and 0 are deuteriums.

In the tables below, the ZeroOcc column contains the number of atoms modelled with zero occupancy, the AltConf column contains the number of residues with at least one atom in alternate conformation and the Trace column contains the number of residues modelled with at most 2 atoms.

- Molecule 1 is a protein called CrmK.

Mol	Chain	Residues	Atoms					ZeroOcc	AltConf	Trace
			Total	C	N	O	S			
1	A	498	Total 3896	C 2464	N 693	O 728	S 11	0	2	0
1	B	498	Total 3891	C 2461	N 693	O 726	S 11	0	1	0
1	C	498	Total 3899	C 2466	N 696	O 726	S 11	0	2	0
1	D	498	Total 3891	C 2461	N 693	O 726	S 11	0	1	0

- Molecule 2 is FLAVIN-ADENINE DINUCLEOTIDE (three-letter code: FAD) (formula: $C_{27}H_{33}N_9O_{15}P_2$).



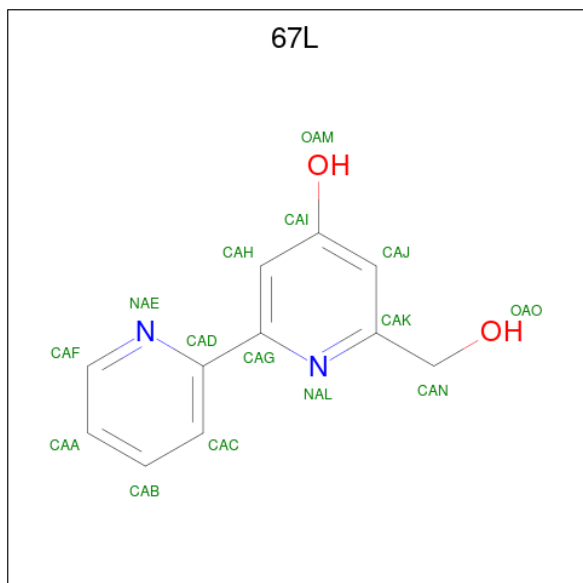
Mol	Chain	Residues	Atoms				ZeroOcc	AltConf	
			Total	C	N	O			P
2	A	1	Total 53	C 27	N 9	O 15	P 2	0	0
2	B	1	Total 53	C 27	N 9	O 15	P 2	0	0

Continued on next page...

Continued from previous page...

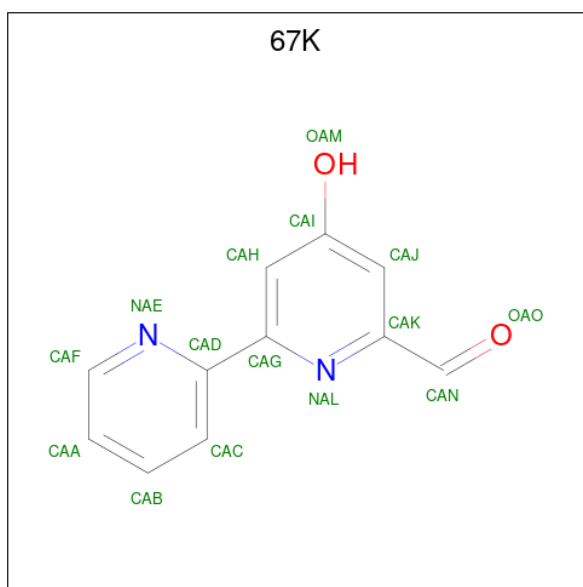
Mol	Chain	Residues	Atoms					ZeroOcc	AltConf
			Total	C	N	O	P		
2	C	1	Total	C	N	O	P	0	0
			53	27	9	15	2		
2	D	1	Total	C	N	O	P	0	0
			53	27	9	15	2		

- Molecule 3 is 6-(hydroxymethyl)[2,2'-bipyridin]-4-ol (three-letter code: 67L) (formula: $C_{11}H_{10}N_2O_2$).



Mol	Chain	Residues	Atoms				ZeroOcc	AltConf
			Total	C	N	O		
3	A	1	Total	C	N	O	0	0
			15	11	2	2		
3	B	1	Total	C	N	O	0	0
			15	11	2	2		
3	C	1	Total	C	N	O	0	0
			15	11	2	2		

- Molecule 4 is 4-hydroxy[2,2'-bipyridine]-6-carbaldehyde (three-letter code: 67K) (formula: $C_{11}H_8N_2O_2$).



Mol	Chain	Residues	Atoms				ZeroOcc	AltConf
			Total	C	N	O		
4	D	1	15	11	2	2	0	0

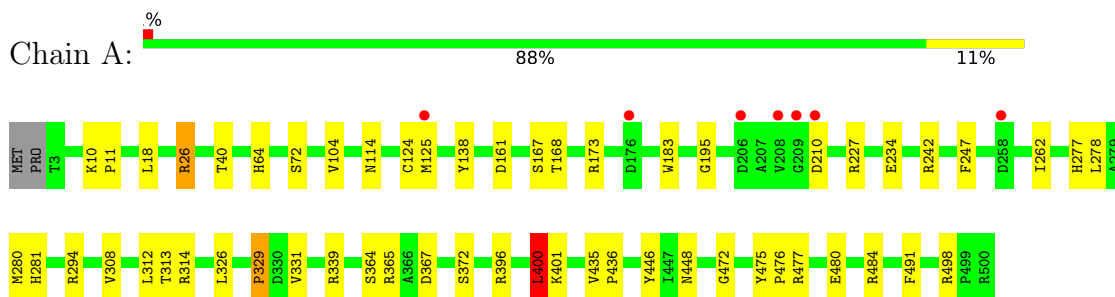
- Molecule 5 is water.

Mol	Chain	Residues	Atoms		ZeroOcc	AltConf
5	A	161	Total	O	0	0
			161	161		
5	B	124	Total	O	0	0
			124	124		
5	C	173	Total	O	0	0
			173	173		
5	D	142	Total	O	0	0
			142	142		

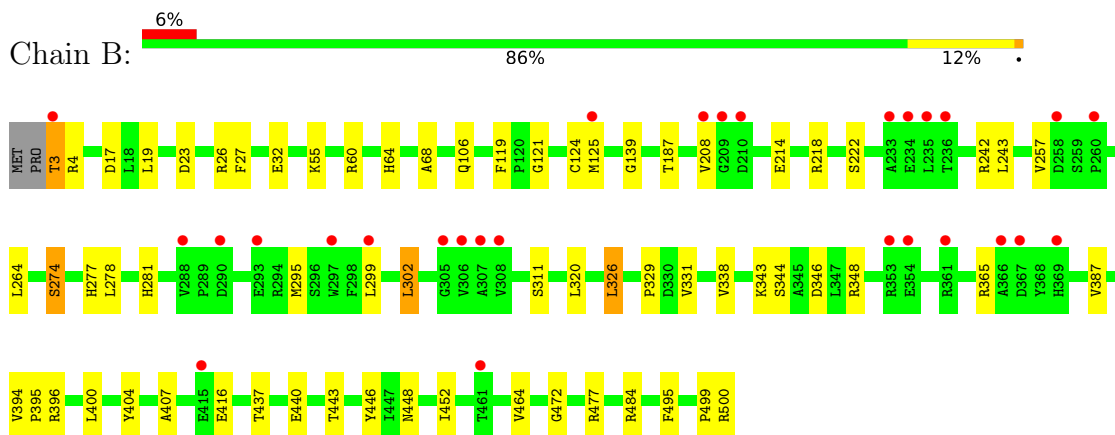
3 Residue-property plots [i](#)

These plots are drawn for all protein, RNA, DNA and oligosaccharide chains in the entry. The first graphic for a chain summarises the proportions of the various outlier classes displayed in the second graphic. The second graphic shows the sequence view annotated by issues in geometry and electron density. Residues are color-coded according to the number of geometric quality criteria for which they contain at least one outlier: green = 0, yellow = 1, orange = 2 and red = 3 or more. A red dot above a residue indicates a poor fit to the electron density ($RSRZ > 2$). Stretches of 2 or more consecutive residues without any outlier are shown as a green connector. Residues present in the sample, but not in the model, are shown in grey.

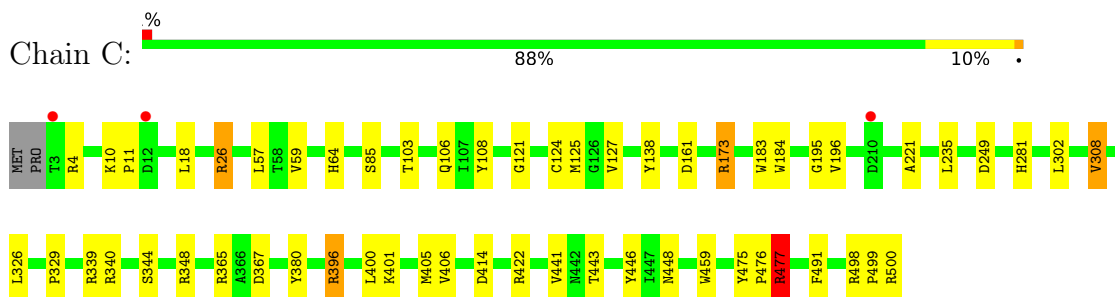
- Molecule 1: CrmK



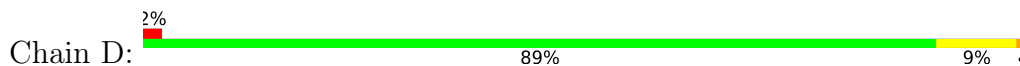
- Molecule 1: CrmK

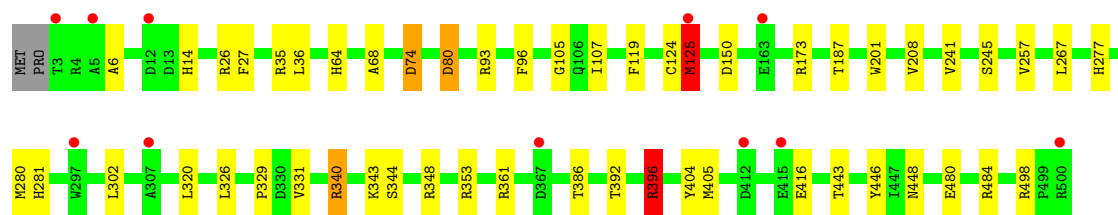


- Molecule 1: CrmK



- Molecule 1: CrmK





4 Data and refinement statistics

Property	Value	Source
Space group	P 1	Depositor
Cell constants a, b, c, α , β , γ	63.11Å 95.20Å 98.04Å 94.73° 96.56° 105.20°	Depositor
Resolution (Å)	45.60 – 2.15 45.62 – 2.15	Depositor EDS
% Data completeness (in resolution range)	97.0 (45.60-2.15) 97.0 (45.62-2.15)	Depositor EDS
R_{merge}	(Not available)	Depositor
R_{sym}	0.16	Depositor
$\langle I/\sigma(I) \rangle$ ¹	2.60 (at 2.16Å)	Xtrriage
Refinement program	REFMAC 5.8.0049	Depositor
R, R_{free}	0.168 , 0.213 0.176 , 0.218	Depositor DCC
R_{free} test set	5754 reflections (5.02%)	wwPDB-VP
Wilson B-factor (Å ²)	23.5	Xtrriage
Anisotropy	0.220	Xtrriage
Bulk solvent k_{sol} (e/Å ³), B_{sol} (Å ²)	0.37 , 41.9	EDS
L-test for twinning ²	$\langle L \rangle = 0.48$, $\langle L^2 \rangle = 0.31$	Xtrriage
Estimated twinning fraction	No twinning to report.	Xtrriage
F_o, F_c correlation	0.96	EDS
Total number of atoms	16449	wwPDB-VP
Average B, all atoms (Å ²)	34.0	wwPDB-VP

Xtrriage's analysis on translational NCS is as follows: *The largest off-origin peak in the Patterson function is 4.57% of the height of the origin peak. No significant pseudotranslation is detected.*

¹Intensities estimated from amplitudes.

²Theoretical values of $\langle |L| \rangle$, $\langle L^2 \rangle$ for acentric reflections are 0.5, 0.333 respectively for untwinned datasets, and 0.375, 0.2 for perfectly twinned datasets.

5 Model quality [i](#)

5.1 Standard geometry [i](#)

Bond lengths and bond angles in the following residue types are not validated in this section: FAD, 67K, 67L

The Z score for a bond length (or angle) is the number of standard deviations the observed value is removed from the expected value. A bond length (or angle) with $|Z| > 5$ is considered an outlier worth inspection. RMSZ is the root-mean-square of all Z scores of the bond lengths (or angles).

Mol	Chain	Bond lengths		Bond angles	
		RMSZ	# Z >5	RMSZ	# Z >5
1	A	0.82	0/4015	0.91	8/5488 (0.1%)
1	B	0.68	1/4007 (0.0%)	0.84	7/5477 (0.1%)
1	C	0.84	0/4018	0.92	8/5491 (0.1%)
1	D	0.71	0/4007	0.85	7/5477 (0.1%)
All	All	0.77	1/16047 (0.0%)	0.88	30/21933 (0.1%)

All (1) bond length outliers are listed below:

Mol	Chain	Res	Type	Atoms	Z	Observed(Å)	Ideal(Å)
1	B	17	ASP	CB-CG	5.58	1.63	1.51

All (30) bond angle outliers are listed below:

Mol	Chain	Res	Type	Atoms	Z	Observed(°)	Ideal(°)
1	A	396	ARG	NE-CZ-NH2	-9.54	115.53	120.30
1	B	484	ARG	NE-CZ-NH1	8.36	124.48	120.30
1	C	477	ARG	NE-CZ-NH1	8.25	124.42	120.30
1	C	498	ARG	NE-CZ-NH1	7.14	123.87	120.30
1	C	26	ARG	NE-CZ-NH2	-7.12	116.74	120.30
1	D	125	MET	CG-SD-CE	6.83	111.12	100.20
1	D	26	ARG	NE-CZ-NH1	6.77	123.68	120.30
1	C	26	ARG	NE-CZ-NH1	6.75	123.67	120.30
1	A	396	ARG	NE-CZ-NH1	6.45	123.53	120.30
1	D	396	ARG	NE-CZ-NH1	6.41	123.50	120.30
1	A	227	ARG	NE-CZ-NH2	-6.39	117.11	120.30
1	D	396	ARG	NE-CZ-NH2	-6.38	117.11	120.30
1	A	400	LEU	CA-CB-CG	5.97	129.04	115.30
1	B	396	ARG	NE-CZ-NH2	-5.95	117.33	120.30
1	B	484	ARG	NE-CZ-NH2	-5.95	117.33	120.30
1	D	26	ARG	NE-CZ-NH2	-5.90	117.35	120.30

Continued on next page...

Continued from previous page...

Mol	Chain	Res	Type	Atoms	Z	Observed(°)	Ideal(°)
1	C	396	ARG	NE-CZ-NH2	-5.88	117.36	120.30
1	D	498	ARG	NE-CZ-NH1	5.87	123.23	120.30
1	B	26	ARG	NE-CZ-NH1	5.84	123.22	120.30
1	B	60	ARG	NE-CZ-NH2	-5.77	117.42	120.30
1	C	308	VAL	CB-CA-C	-5.59	100.79	111.40
1	C	396	ARG	NE-CZ-NH1	5.43	123.01	120.30
1	B	26	ARG	NE-CZ-NH2	-5.36	117.62	120.30
1	A	498	ARG	NE-CZ-NH1	5.34	122.97	120.30
1	B	396	ARG	NE-CZ-NH1	5.30	122.95	120.30
1	A	242	ARG	NE-CZ-NH1	5.17	122.89	120.30
1	C	414	ASP	CB-CG-OD1	5.16	122.94	118.30
1	A	294	ARG	NE-CZ-NH1	5.08	122.84	120.30
1	A	26	ARG	NE-CZ-NH2	-5.06	117.77	120.30
1	D	80	ASP	CB-CG-OD1	5.06	122.86	118.30

There are no chirality outliers.

There are no planarity outliers.

5.2 Too-close contacts [i](#)

In the following table, the Non-H and H(model) columns list the number of non-hydrogen atoms and hydrogen atoms in the chain respectively. The H(added) column lists the number of hydrogen atoms added and optimized by MolProbity. The Clashes column lists the number of clashes within the asymmetric unit, whereas Symm-Clashes lists symmetry-related clashes.

Mol	Chain	Non-H	H(model)	H(added)	Clashes	Symm-Clashes
1	A	3896	0	3719	37	0
1	B	3891	0	3715	33	0
1	C	3899	0	3728	44	0
1	D	3891	0	3715	38	0
2	A	53	0	29	5	0
2	B	53	0	30	5	0
2	C	53	0	30	5	0
2	D	53	0	30	4	0
3	A	15	0	0	0	0
3	B	15	0	0	1	0
3	C	15	0	0	0	0
4	D	15	0	0	0	0
5	A	161	0	0	1	0
5	B	124	0	0	2	0
5	C	173	0	0	4	0

Continued on next page...

Continued from previous page...

Mol	Chain	Non-H	H(model)	H(added)	Clashes	Symm-Clashes
5	D	142	0	0	2	0
All	All	16449	0	14996	143	0

The all-atom clashscore is defined as the number of clashes found per 1000 atoms (including hydrogen atoms). The all-atom clashscore for this structure is 5.

All (143) close contacts within the same asymmetric unit are listed below, sorted by their clash magnitude.

Atom-1	Atom-2	Interatomic distance (Å)	Clash overlap (Å)
1:D:64:HIS:ND1	2:D:601:FAD:HM83	1.07	1.40
1:B:64:HIS:ND1	2:B:601:FAD:HM83	1.05	1.35
1:C:64:HIS:CE1	2:C:601:FAD:HM83	1.69	1.28
1:B:64:HIS:CE1	2:B:601:FAD:HM83	1.72	1.24
1:C:64:HIS:ND1	2:C:601:FAD:HM83	0.88	1.21
1:D:64:HIS:CE1	2:D:601:FAD:HM83	1.87	1.09
1:C:281[A]:HIS:NE2	1:C:326:LEU:HD11	1.80	0.95
1:B:281[A]:HIS:CD2	1:B:326:LEU:HD12	2.15	0.81
1:C:281[A]:HIS:CE1	1:C:326:LEU:HD11	2.15	0.81
1:A:64:HIS:ND1	2:A:601:FAD:HM81	1.94	0.77
1:A:64:HIS:CE1	2:A:601:FAD:C8M	2.67	0.75
1:C:64:HIS:ND1	2:C:601:FAD:HM81	1.96	0.73
1:A:281[A]:HIS:NE2	1:A:326:LEU:HD13	2.05	0.72
1:A:64:HIS:CG	2:A:601:FAD:C8M	2.73	0.70
1:A:477:ARG:NH1	1:A:480:GLU:OE2	2.24	0.70
1:B:64:HIS:ND1	2:B:601:FAD:HM81	2.00	0.69
1:C:499:PRO:O	1:C:500:ARG:CB	2.41	0.68
1:C:281[A]:HIS:NE2	1:C:326:LEU:CD1	2.57	0.67
1:C:281[A]:HIS:CE1	1:C:326:LEU:CD1	2.79	0.66
1:C:340:ARG:HD3	1:C:405:MET:HE1	1.78	0.66
1:C:365:ARG:HG2	1:C:367:ASP:OD1	1.97	0.64
1:D:281[A]:HIS:CE1	1:D:326:LEU:CD1	2.82	0.63
1:A:281[A]:HIS:CE1	1:A:326:LEU:CD1	2.84	0.61
1:D:280:MET:CE	1:D:302:LEU:HD11	2.31	0.60
1:A:281[A]:HIS:NE2	1:A:326:LEU:CD1	2.65	0.60
1:C:184:TRP:CZ3	1:C:477:ARG:HG2	2.36	0.59
1:D:281[A]:HIS:CE1	1:D:326:LEU:HD11	2.37	0.58
1:B:124:CYS:HB3	2:B:601:FAD:HM73	1.85	0.58
1:A:281[A]:HIS:CE1	1:A:326:LEU:HD13	2.38	0.58
1:C:18:LEU:HD21	1:D:320:LEU:HD23	1.86	0.58
1:D:340:ARG:HD3	1:D:405:MET:CE	2.34	0.57
1:D:150:ASP:OD2	1:D:396:ARG:NH2	2.38	0.57

Continued on next page...

Continued from previous page...

Atom-1	Atom-2	Interatomic distance (Å)	Clash overlap (Å)
1:A:104:VAL:HG21	1:A:124:CYS:O	2.05	0.56
1:C:235:LEU:HD12	1:C:308:VAL:HG21	1.86	0.56
1:C:348:ARG:HD2	1:C:443:THR:HG22	1.88	0.56
1:C:64:HIS:CG	2:C:601:FAD:C8M	2.77	0.55
1:D:124:CYS:HB3	2:D:601:FAD:HM73	1.89	0.55
1:C:195:GLY:HA2	1:C:491:PHE:CE2	2.42	0.55
1:D:280:MET:HE1	1:D:302:LEU:HD11	1.89	0.54
1:D:281[A]:HIS:CE1	1:D:326:LEU:HD13	2.43	0.54
1:C:340:ARG:HD3	1:C:405:MET:CE	2.37	0.54
1:A:104:VAL:CG2	1:A:124:CYS:O	2.57	0.53
1:D:446:TYR:CZ	1:D:448:ASN:HB2	2.44	0.53
1:A:173:ARG:HB3	1:A:183:TRP:CE2	2.44	0.53
1:A:247:PHE:CD1	1:A:280:MET:HE1	2.43	0.53
1:B:499:PRO:O	1:B:500:ARG:CB	2.57	0.53
1:D:257:VAL:HG21	1:D:386:THR:CG2	2.39	0.53
1:B:281[A]:HIS:NE2	1:B:326:LEU:HD12	2.24	0.52
1:C:441:VAL:HG11	5:C:748:HOH:O	2.08	0.52
1:C:59:VAL:HG21	1:C:196:VAL:HG22	1.92	0.52
1:C:281[A]:HIS:CD2	1:C:326:LEU:CD1	2.92	0.52
1:A:475:TYR:HB3	1:A:476:PRO:HD3	1.91	0.52
1:C:124:CYS:HB3	2:C:601:FAD:HM73	1.91	0.52
1:D:150:ASP:CG	1:D:396:ARG:HH22	2.12	0.51
1:A:364:SER:O	1:A:365:ARG:C	2.47	0.51
1:A:18:LEU:HD21	1:B:320:LEU:HD23	1.92	0.51
1:D:105:GLY:HA3	1:D:125:MET:HG3	1.93	0.50
1:A:125:MET:HG3	1:B:331:VAL:HG21	1.93	0.50
1:D:36:LEU:HD23	1:D:80:ASP:HB3	1.94	0.50
1:C:138:TYR:CZ	1:C:401:LYS:HD2	2.47	0.50
1:C:326:LEU:HD21	5:C:728:HOH:O	2.11	0.50
1:D:348:ARG:HG3	1:D:443:THR:CG2	2.42	0.50
1:A:329:PRO:HB3	1:B:329:PRO:HB3	1.94	0.50
1:D:480:GLU:OE1	1:D:484:ARG:NH2	2.45	0.49
1:A:331:VAL:HG21	1:B:125:MET:HG3	1.94	0.48
1:B:27:PHE:CD1	1:B:68:ALA:HB2	2.49	0.48
1:A:64:HIS:HB3	2:A:601:FAD:HM81	1.96	0.48
1:A:195:GLY:HA2	1:A:491:PHE:CE2	2.49	0.47
1:B:437:THR:HG22	1:B:464:VAL:HG21	1.95	0.47
1:A:435:VAL:HB	1:A:436:PRO:HD2	1.96	0.47
1:B:214:GLU:OE2	1:B:218:ARG:NH2	2.47	0.47
1:D:241:VAL:O	1:D:245:SER:OG	2.20	0.47
1:D:257:VAL:HG21	1:D:386:THR:HG21	1.97	0.47

Continued on next page...

Continued from previous page...

Atom-1	Atom-2	Interatomic distance (Å)	Clash overlap (Å)
1:B:338:VAL:CG1	1:B:407:ALA:HB1	2.45	0.47
1:A:234:GLU:O	1:A:308:VAL:HG22	2.14	0.47
1:C:475:TYR:HB3	1:C:476:PRO:HD3	1.97	0.47
1:C:85:SER:HB2	1:C:106:GLN:HE22	1.80	0.46
1:C:329:PRO:HB3	1:D:329:PRO:HB3	1.97	0.46
1:A:484:ARG:HD2	5:A:860:HOH:O	2.14	0.46
1:C:326:LEU:HD23	5:C:788:HOH:O	2.14	0.46
1:C:365:ARG:NH1	5:C:710:HOH:O	2.48	0.46
1:A:124:CYS:HB3	2:A:601:FAD:HM73	1.97	0.46
1:A:281[A]:HIS:CD2	1:A:326:LEU:HD13	2.50	0.46
1:D:326:LEU:O	1:D:326:LEU:HD12	2.16	0.46
1:B:23:ASP:OD2	5:B:701:HOH:O	2.21	0.45
1:B:187:THR:O	1:B:394:VAL:HG23	2.16	0.45
1:B:452:ILE:HA	1:B:495:PHE:CZ	2.52	0.45
1:D:64:HIS:ND1	2:D:601:FAD:HM81	2.14	0.45
1:D:74:ASP:OD1	1:D:74:ASP:N	2.49	0.44
1:C:103:THR:HA	1:C:127:VAL:O	2.18	0.44
1:C:446:TYR:CZ	1:C:448:ASN:HB2	2.52	0.44
2:B:601:FAD:HM82	3:B:602:67L:CAC	2.47	0.44
1:A:331:VAL:HG21	1:B:125:MET:CG	2.48	0.44
1:C:235:LEU:CD1	1:C:308:VAL:HG21	2.47	0.44
1:C:380:TYR:CZ	1:C:401:LYS:HE2	2.53	0.44
1:B:295:MET:O	1:B:299:LEU:HG	2.18	0.44
1:C:422:ARG:HD3	1:C:459:TRP:CE2	2.53	0.43
1:C:348:ARG:HD2	1:C:443:THR:CG2	2.48	0.43
1:D:340:ARG:HD3	1:D:405:MET:HE1	2.00	0.43
1:A:114:ASN:O	1:B:4:ARG:NH1	2.51	0.43
1:C:302:LEU:HD23	1:C:302:LEU:HA	1.87	0.43
1:C:125:MET:HG3	1:D:331:VAL:HG21	2.01	0.43
1:D:96:PHE:O	1:D:201:TRP:HA	2.19	0.43
1:A:400:LEU:HD13	1:A:401:LYS:N	2.34	0.43
1:B:243:LEU:HD12	1:B:302:LEU:HD22	2.01	0.42
1:D:36:LEU:CD2	1:D:80:ASP:HB3	2.49	0.42
1:D:446:TYR:CE2	1:D:448:ASN:HB2	2.54	0.42
1:A:161:ASP:OD1	1:A:161:ASP:C	2.56	0.42
1:B:446:TYR:CE2	1:B:448:ASN:HB2	2.54	0.42
1:A:262:ILE:HD12	1:A:262:ILE:HA	1.91	0.42
1:C:173:ARG:HB2	1:C:183:TRP:CZ2	2.55	0.42
1:C:173:ARG:HB2	1:C:183:TRP:CE2	2.55	0.42
1:D:107:ILE:HG21	1:D:119:PHE:HE1	1.85	0.42
1:D:187:THR:HB	1:D:392:THR:HB	2.00	0.42

Continued on next page...

Continued from previous page...

Atom-1	Atom-2	Interatomic distance (Å)	Clash overlap (Å)
1:D:267:LEU:HB3	1:D:281[A]:HIS:CE1	2.54	0.42
1:D:27:PHE:CD1	1:D:68:ALA:HB2	2.55	0.42
1:D:6:ALA:HB1	1:D:35:ARG:HD2	2.02	0.42
1:A:312:LEU:HD11	1:A:314:ARG:CG	2.50	0.42
1:B:32:GLU:OE2	1:B:55:LYS:HE2	2.20	0.42
1:B:121:GLY:O	1:B:139:GLY:HA3	2.20	0.41
1:B:343:LYS:HB2	1:B:404:TYR:HB2	2.01	0.41
1:A:40:THR:HG21	1:A:168:THR:HG21	2.01	0.41
1:B:3:THR:HG22	1:B:4:ARG:H	1.84	0.41
1:A:446:TYR:CZ	1:A:448:ASN:HB2	2.55	0.41
1:A:10:LYS:HB3	1:A:11:PRO:HD2	2.02	0.41
1:C:281[A]:HIS:CD2	1:C:326:LEU:HD13	2.55	0.41
1:C:340:ARG:HH11	1:C:405:MET:CE	2.33	0.41
1:C:108:TYR:OH	1:C:121:GLY:C	2.59	0.41
1:D:348:ARG:NE	5:D:708:HOH:O	2.39	0.41
1:B:208:VAL:HG22	5:B:772:HOH:O	2.20	0.41
1:B:346:ASP:HB2	1:B:443:THR:OG1	2.21	0.41
1:C:26:ARG:HG3	1:C:339:ARG:HB3	2.03	0.41
1:C:221:ALA:HB2	1:D:14:HIS:CD2	2.56	0.41
1:D:343:LYS:HB2	1:D:404:TYR:HB2	2.03	0.41
1:A:26:ARG:HG3	1:A:339:ARG:HB3	2.02	0.41
1:A:138:TYR:CZ	1:A:401:LYS:HD3	2.56	0.41
1:B:19:LEU:HD23	1:B:19:LEU:HA	1.87	0.41
1:A:312:LEU:HD11	1:A:314:ARG:HG3	2.03	0.40
1:B:394:VAL:HG12	1:B:395:PRO:O	2.21	0.40
1:B:242:ARG:HD2	1:B:242:ARG:HA	1.89	0.40
1:C:10:LYS:HB3	1:C:11:PRO:CD	2.51	0.40
1:D:93:ARG:HD2	5:D:729:HOH:O	2.21	0.40
1:B:264:LEU:C	1:B:264:LEU:HD23	2.41	0.40

There are no symmetry-related clashes.

5.3 Torsion angles [i](#)

5.3.1 Protein backbone [i](#)

In the following table, the Percentiles column shows the percent Ramachandran outliers of the chain as a percentile score with respect to all X-ray entries followed by that with respect to entries of similar resolution.

The Analysed column shows the number of residues for which the backbone conformation was analysed, and the total number of residues.

Mol	Chain	Analysed	Favoured	Allowed	Outliers	Percentiles	
1	A	498/500 (100%)	483 (97%)	14 (3%)	1 (0%)	47	46
1	B	497/500 (99%)	482 (97%)	12 (2%)	3 (1%)	25	18
1	C	498/500 (100%)	483 (97%)	15 (3%)	0	100	100
1	D	497/500 (99%)	483 (97%)	14 (3%)	0	100	100
All	All	1990/2000 (100%)	1931 (97%)	55 (3%)	4 (0%)	47	46

All (4) Ramachandran outliers are listed below:

Mol	Chain	Res	Type
1	B	274	SER
1	A	472	GLY
1	B	365	ARG
1	B	472	GLY

5.3.2 Protein sidechains [i](#)

In the following table, the Percentiles column shows the percent sidechain outliers of the chain as a percentile score with respect to all X-ray entries followed by that with respect to entries of similar resolution.

The Analysed column shows the number of residues for which the sidechain conformation was analysed, and the total number of residues.

Mol	Chain	Analysed	Rotameric	Outliers	Percentiles	
1	A	401/402 (100%)	391 (98%)	10 (2%)	47	49
1	B	400/402 (100%)	382 (96%)	18 (4%)	27	24
1	C	401/402 (100%)	391 (98%)	10 (2%)	47	49
1	D	400/402 (100%)	389 (97%)	11 (3%)	43	44
All	All	1602/1608 (100%)	1553 (97%)	49 (3%)	40	39

All (49) residues with a non-rotameric sidechain are listed below:

Mol	Chain	Res	Type
1	A	72	SER
1	A	167	SER
1	A	210	ASP
1	A	277	HIS
1	A	278	LEU
1	A	313	THR
1	A	329	PRO

Continued on next page...

Continued from previous page...

Mol	Chain	Res	Type
1	A	367	ASP
1	A	372	SER
1	A	400	LEU
1	B	3	THR
1	B	106	GLN
1	B	119	PHE
1	B	222	SER
1	B	257	VAL
1	B	274	SER
1	B	277	HIS
1	B	278	LEU
1	B	302	LEU
1	B	311	SER
1	B	326	LEU
1	B	344	SER
1	B	348	ARG
1	B	387	VAL
1	B	400	LEU
1	B	416	GLU
1	B	440	GLU
1	B	477	ARG
1	C	4	ARG
1	C	57	LEU
1	C	161	ASP
1	C	173	ARG
1	C	249	ASP
1	C	344	SER
1	C	396	ARG
1	C	400	LEU
1	C	406	VAL
1	C	477	ARG
1	D	74	ASP
1	D	125	MET
1	D	173	ARG
1	D	208	VAL
1	D	277	HIS
1	D	340	ARG
1	D	344	SER
1	D	353	ARG
1	D	361	ARG
1	D	396	ARG
1	D	416	GLU

Sometimes sidechains can be flipped to improve hydrogen bonding and reduce clashes. All (4) such sidechains are listed below:

Mol	Chain	Res	Type
1	A	283	GLN
1	B	14	HIS
1	C	106	GLN
1	D	14	HIS

5.3.3 RNA [i](#)

There are no RNA molecules in this entry.

5.4 Non-standard residues in protein, DNA, RNA chains [i](#)

There are no non-standard protein/DNA/RNA residues in this entry.

5.5 Carbohydrates [i](#)

There are no monosaccharides in this entry.

5.6 Ligand geometry [i](#)

8 ligands are modelled in this entry.

In the following table, the Counts columns list the number of bonds (or angles) for which Mogul statistics could be retrieved, the number of bonds (or angles) that are observed in the model and the number of bonds (or angles) that are defined in the Chemical Component Dictionary. The Link column lists molecule types, if any, to which the group is linked. The Z score for a bond length (or angle) is the number of standard deviations the observed value is removed from the expected value. A bond length (or angle) with $|Z| > 2$ is considered an outlier worth inspection. RMSZ is the root-mean-square of all Z scores of the bond lengths (or angles).

Mol	Type	Chain	Res	Link	Bond lengths			Bond angles		
					Counts	RMSZ	# Z > 2	Counts	RMSZ	# Z > 2
2	FAD	D	601	1	53,58,58	1.26	5 (9%)	68,89,89	1.33	8 (11%)
2	FAD	A	601	1	53,58,58	1.30	6 (11%)	68,89,89	1.39	10 (14%)
3	67L	B	602	-	16,16,16	2.35	3 (18%)	20,21,21	2.00	6 (30%)
4	67K	D	602	-	16,16,16	2.45	3 (18%)	19,21,21	2.43	9 (47%)
2	FAD	C	601	1	53,58,58	1.20	4 (7%)	68,89,89	1.41	13 (19%)
3	67L	A	602	-	16,16,16	2.36	3 (18%)	20,21,21	1.84	4 (20%)
3	67L	C	602	-	16,16,16	2.39	4 (25%)	20,21,21	2.13	8 (40%)

Mol	Type	Chain	Res	Link	Bond lengths			Bond angles		
					Counts	RMSZ	# Z > 2	Counts	RMSZ	# Z > 2
2	FAD	B	601	1	53,58,58	1.30	6 (11%)	68,89,89	1.40	11 (16%)

In the following table, the Chirals column lists the number of chiral outliers, the number of chiral centers analysed, the number of these observed in the model and the number defined in the Chemical Component Dictionary. Similar counts are reported in the Torsion and Rings columns. '-' means no outliers of that kind were identified.

Mol	Type	Chain	Res	Link	Chirals	Torsions	Rings
2	FAD	D	601	1	-	6/30/50/50	0/6/6/6
2	FAD	A	601	1	-	6/30/50/50	0/6/6/6
3	67L	B	602	-	-	4/6/6/6	0/2/2/2
4	67K	D	602	-	-	6/6/6/6	0/2/2/2
2	FAD	C	601	1	-	6/30/50/50	0/6/6/6
3	67L	A	602	-	-	4/6/6/6	0/2/2/2
3	67L	C	602	-	-	3/6/6/6	0/2/2/2
2	FAD	B	601	1	-	6/30/50/50	0/6/6/6

All (34) bond length outliers are listed below:

Mol	Chain	Res	Type	Atoms	Z	Observed(Å)	Ideal(Å)
4	D	602	67K	CAK-CAN	-7.51	1.40	1.48
3	B	602	67L	CAN-CAK	-7.11	1.40	1.51
3	C	602	67L	CAN-CAK	-6.81	1.40	1.51
3	A	602	67L	CAN-CAK	-6.08	1.41	1.51
3	A	602	67L	CAF-NAE	4.67	1.44	1.34
3	B	602	67L	CAG-CAD	-4.54	1.39	1.49
4	D	602	67K	CAF-NAE	4.53	1.44	1.34
2	A	601	FAD	C9A-C5X	4.52	1.48	1.41
2	D	601	FAD	C9A-C5X	4.46	1.48	1.41
3	C	602	67L	CAG-CAD	-4.44	1.39	1.49
3	A	602	67L	CAG-CAD	-4.38	1.39	1.49
2	B	601	FAD	C9A-C5X	4.04	1.47	1.41
3	C	602	67L	CAF-NAE	3.51	1.42	1.34
3	B	602	67L	CAF-NAE	3.47	1.41	1.34
2	A	601	FAD	C8-C7	3.46	1.49	1.40
2	C	601	FAD	C9A-C5X	3.36	1.46	1.41
2	C	601	FAD	C8-C7	3.28	1.49	1.40
2	A	601	FAD	C4X-N5	3.20	1.37	1.30
4	D	602	67K	CAD-CAG	-2.90	1.42	1.49
2	B	601	FAD	C5X-N5	-2.83	1.34	1.39

Continued on next page...

Continued from previous page...

Mol	Chain	Res	Type	Atoms	Z	Observed(Å)	Ideal(Å)
2	D	601	FAD	C4A-N3A	-2.79	1.31	1.35
2	D	601	FAD	C8-C7	2.73	1.47	1.40
2	D	601	FAD	C4X-N5	2.69	1.36	1.30
2	C	601	FAD	C4A-N3A	-2.65	1.32	1.35
2	A	601	FAD	C4-N3	-2.51	1.34	1.38
2	A	601	FAD	C7M-C7	2.51	1.56	1.51
2	B	601	FAD	C8-C7	2.33	1.46	1.40
2	B	601	FAD	C4X-N5	2.29	1.35	1.30
3	C	602	67L	CAG-NAL	2.24	1.38	1.34
2	B	601	FAD	C4-N3	-2.22	1.34	1.38
2	B	601	FAD	C2'-C3'	-2.22	1.49	1.53
2	A	601	FAD	C4A-N3A	-2.15	1.32	1.35
2	C	601	FAD	C4X-N5	2.14	1.34	1.30
2	D	601	FAD	C4-N3	-2.03	1.35	1.38

All (69) bond angle outliers are listed below:

Mol	Chain	Res	Type	Atoms	Z	Observed(°)	Ideal(°)
4	D	602	67K	CAK-NAL-CAG	4.55	123.03	118.62
2	D	601	FAD	N3A-C2A-N1A	-4.55	121.57	128.68
3	C	602	67L	CAN-CAK-NAL	4.41	119.90	115.17
4	D	602	67K	CAF-NAE-CAD	4.32	123.30	117.23
3	B	602	67L	CAG-NAL-CAK	4.32	123.01	118.36
3	A	602	67L	CAJ-CAK-NAL	-3.93	118.73	122.90
3	C	602	67L	CAG-NAL-CAK	3.88	122.54	118.36
3	A	602	67L	CAG-NAL-CAK	3.80	122.45	118.36
4	D	602	67K	CAC-CAD-NAE	-3.78	116.63	122.26
2	B	601	FAD	O4-C4-C4X	-3.77	116.61	126.60
4	D	602	67K	CAH-CAG-NAL	-3.62	118.05	122.35
2	A	601	FAD	C1B-N9A-C4A	-3.58	120.34	126.64
3	B	602	67L	CAJ-CAK-NAL	-3.56	119.13	122.90
3	C	602	67L	CAJ-CAK-NAL	-3.55	119.14	122.90
2	A	601	FAD	N3A-C2A-N1A	-3.53	123.16	128.68
3	B	602	67L	CAA-CAF-NAE	-3.48	117.75	123.43
3	B	602	67L	CAF-NAE-CAD	3.45	122.06	117.23
3	A	602	67L	CAN-CAK-NAL	3.44	118.86	115.17
2	C	601	FAD	C4-C4X-N5	3.42	123.10	118.23
2	A	601	FAD	C4-C4X-N5	3.41	123.09	118.23
3	C	602	67L	CAF-NAE-CAD	3.30	121.86	117.23
2	C	601	FAD	N3A-C2A-N1A	-3.27	123.56	128.68
2	B	601	FAD	C4A-C5A-N7A	-3.17	106.10	109.40
2	D	601	FAD	O4-C4-C4X	-3.11	118.35	126.60

Continued on next page...

Continued from previous page...

Mol	Chain	Res	Type	Atoms	Z	Observed(°)	Ideal(°)
3	B	602	67L	CAN-CAK-NAL	3.08	118.47	115.17
2	B	601	FAD	C4-N3-C2	-3.07	119.97	125.64
4	D	602	67K	CAD-CAG-NAL	3.02	119.92	116.28
2	A	601	FAD	C6-C7-C8	-3.00	115.36	119.67
2	C	601	FAD	O4-C4-C4X	-2.96	118.75	126.60
2	A	601	FAD	O4-C4-C4X	-2.88	118.95	126.60
4	D	602	67K	CAJ-CAK-CAN	-2.71	118.88	121.23
2	B	601	FAD	C4X-C10-N1	-2.70	118.46	124.73
2	A	601	FAD	C4X-C4-N3	2.69	120.03	113.19
2	B	601	FAD	C4X-C4-N3	2.67	119.97	113.19
2	C	601	FAD	O4'-C4'-C5'	-2.66	103.94	109.92
2	C	601	FAD	C10-N1-C2	2.64	122.18	116.90
2	D	601	FAD	O2'-C2'-C1'	-2.53	103.69	109.80
3	A	602	67L	CAI-CAH-CAG	-2.43	117.34	118.93
3	C	602	67L	CAI-CAH-CAG	-2.41	117.35	118.93
3	C	602	67L	CAA-CAF-NAE	-2.38	119.55	123.43
2	B	601	FAD	N3A-C2A-N1A	-2.37	124.97	128.68
2	B	601	FAD	O3'-C3'-C2'	-2.37	103.10	108.81
2	C	601	FAD	N6A-C6A-N1A	2.35	123.46	118.57
2	D	601	FAD	O4'-C4'-C5'	-2.33	104.68	109.92
2	B	601	FAD	O3B-C3B-C2B	-2.31	104.36	111.82
2	C	601	FAD	C1B-N9A-C4A	-2.28	122.64	126.64
2	B	601	FAD	N3-C2-N1	2.27	123.83	119.38
2	B	601	FAD	O2P-P-O1P	2.27	123.44	112.24
2	C	601	FAD	C4X-C4-N3	2.27	118.94	113.19
2	A	601	FAD	C4-N3-C2	-2.22	121.54	125.64
3	C	602	67L	CAD-CAG-NAL	2.22	118.95	116.28
2	D	601	FAD	C1B-N9A-C4A	-2.20	122.77	126.64
2	A	601	FAD	C10-N1-C2	2.18	121.26	116.90
2	C	601	FAD	O4B-C1B-C2B	-2.18	103.75	106.93
2	A	601	FAD	C4X-C10-N1	-2.17	119.69	124.73
2	D	601	FAD	C6-C7-C8	-2.16	116.57	119.67
2	D	601	FAD	C4-C4X-N5	2.16	121.31	118.23
2	C	601	FAD	C6-C7-C8	-2.16	116.57	119.67
2	C	601	FAD	O2-C2-N1	-2.15	118.27	121.83
2	C	601	FAD	O2B-C2B-C1B	2.12	118.70	110.85
4	D	602	67K	CAI-CAH-CAG	2.12	120.32	118.93
3	B	602	67L	CAH-CAG-NAL	-2.07	119.89	122.35
4	D	602	67K	CAG-CAD-NAE	2.07	120.43	116.77
4	D	602	67K	OAO-CAN-CAK	-2.06	122.28	124.22
2	D	601	FAD	O3B-C3B-C2B	-2.05	105.19	111.82
3	C	602	67L	CAC-CAD-NAE	-2.03	119.23	122.26

Continued on next page...

Continued from previous page...

Mol	Chain	Res	Type	Atoms	Z	Observed(°)	Ideal(°)
2	C	601	FAD	C4-N3-C2	-2.01	121.92	125.64
2	B	601	FAD	O3'-C3'-C4'	2.01	113.67	108.81
2	A	601	FAD	C9-C8-C7	2.00	122.54	119.67

There are no chirality outliers.

All (41) torsion outliers are listed below:

Mol	Chain	Res	Type	Atoms
4	D	602	67K	NAL-CAK-CAN-OAO
2	D	601	FAD	C2'-C3'-C4'-C5'
2	A	601	FAD	O3'-C3'-C4'-O4'
2	B	601	FAD	O3'-C3'-C4'-O4'
2	B	601	FAD	O3'-C3'-C4'-C5'
2	D	601	FAD	O3'-C3'-C4'-C5'
2	A	601	FAD	C2'-C3'-C4'-O4'
2	D	601	FAD	C2'-C3'-C4'-O4'
2	D	601	FAD	O3'-C3'-C4'-O4'
2	C	601	FAD	C2'-C3'-C4'-C5'
2	B	601	FAD	C2'-C3'-C4'-O4'
2	C	601	FAD	C2'-C3'-C4'-O4'
2	A	601	FAD	C2'-C3'-C4'-C5'
2	B	601	FAD	C2'-C3'-C4'-C5'
2	A	601	FAD	O3'-C3'-C4'-C5'
2	C	601	FAD	O3'-C3'-C4'-C5'
2	A	601	FAD	PA-O3P-P-O2P
2	C	601	FAD	PA-O3P-P-O2P
2	D	601	FAD	PA-O3P-P-O2P
4	D	602	67K	CAJ-CAK-CAN-OAO
2	B	601	FAD	PA-O3P-P-O2P
2	C	601	FAD	O3'-C3'-C4'-O4'
4	D	602	67K	NAE-CAD-CAG-CAH
3	B	602	67L	NAE-CAD-CAG-CAH
4	D	602	67K	CAC-CAD-CAG-CAH
4	D	602	67K	NAE-CAD-CAG-NAL
3	B	602	67L	CAC-CAD-CAG-CAH
3	B	602	67L	NAE-CAD-CAG-NAL
3	A	602	67L	NAE-CAD-CAG-NAL
4	D	602	67K	CAC-CAD-CAG-NAL
2	B	601	FAD	C5B-O5B-PA-O3P
3	B	602	67L	CAC-CAD-CAG-NAL
3	A	602	67L	NAE-CAD-CAG-CAH
2	A	601	FAD	PA-O3P-P-O1P

Continued on next page...

Continued from previous page...

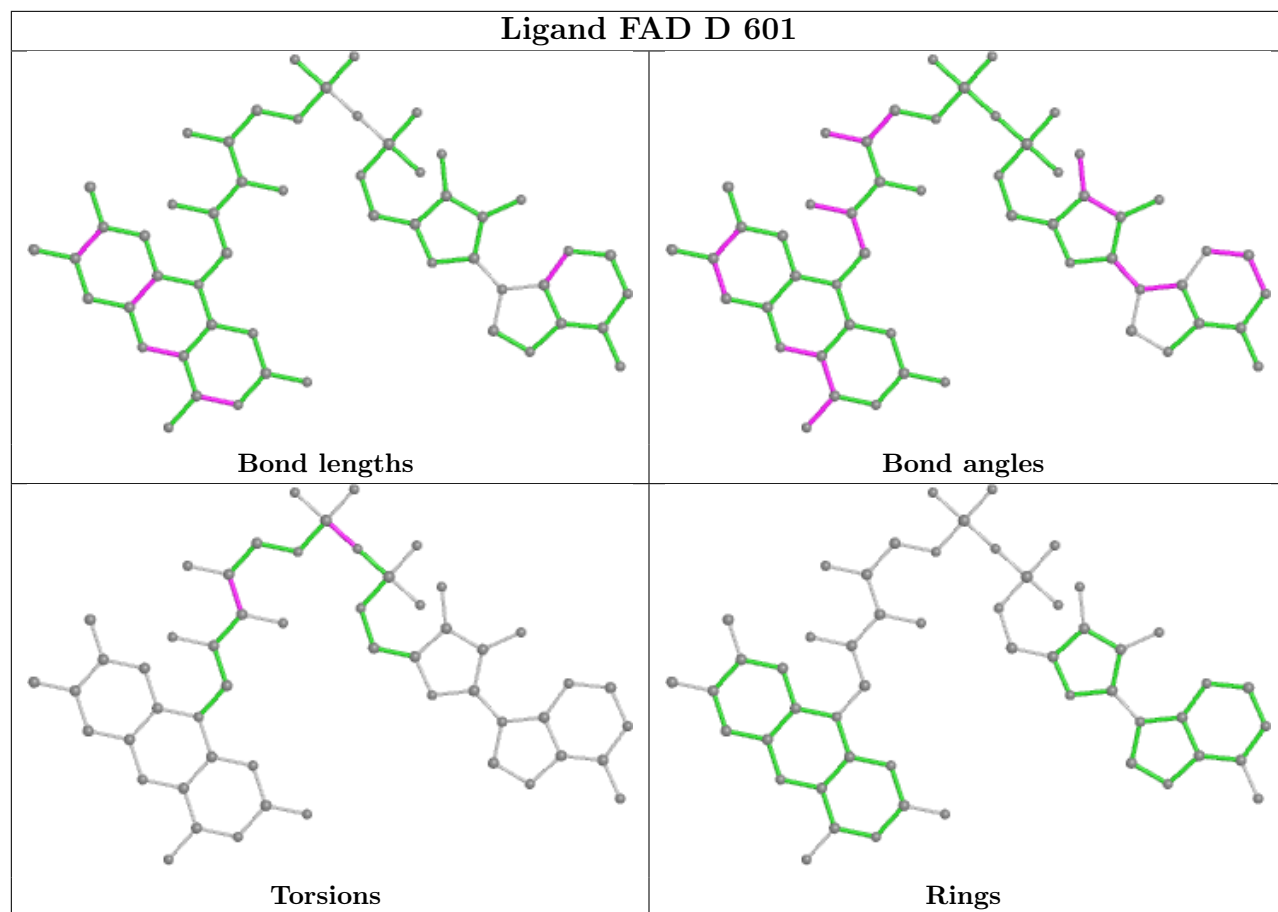
Mol	Chain	Res	Type	Atoms
2	C	601	FAD	PA-O3P-P-O1P
2	D	601	FAD	PA-O3P-P-O1P
3	C	602	67L	NAE-CAD-CAG-NAL
3	A	602	67L	CAC-CAD-CAG-CAH
3	C	602	67L	CAC-CAD-CAG-CAH
3	A	602	67L	CAC-CAD-CAG-NAL
3	C	602	67L	CAC-CAD-CAG-NAL

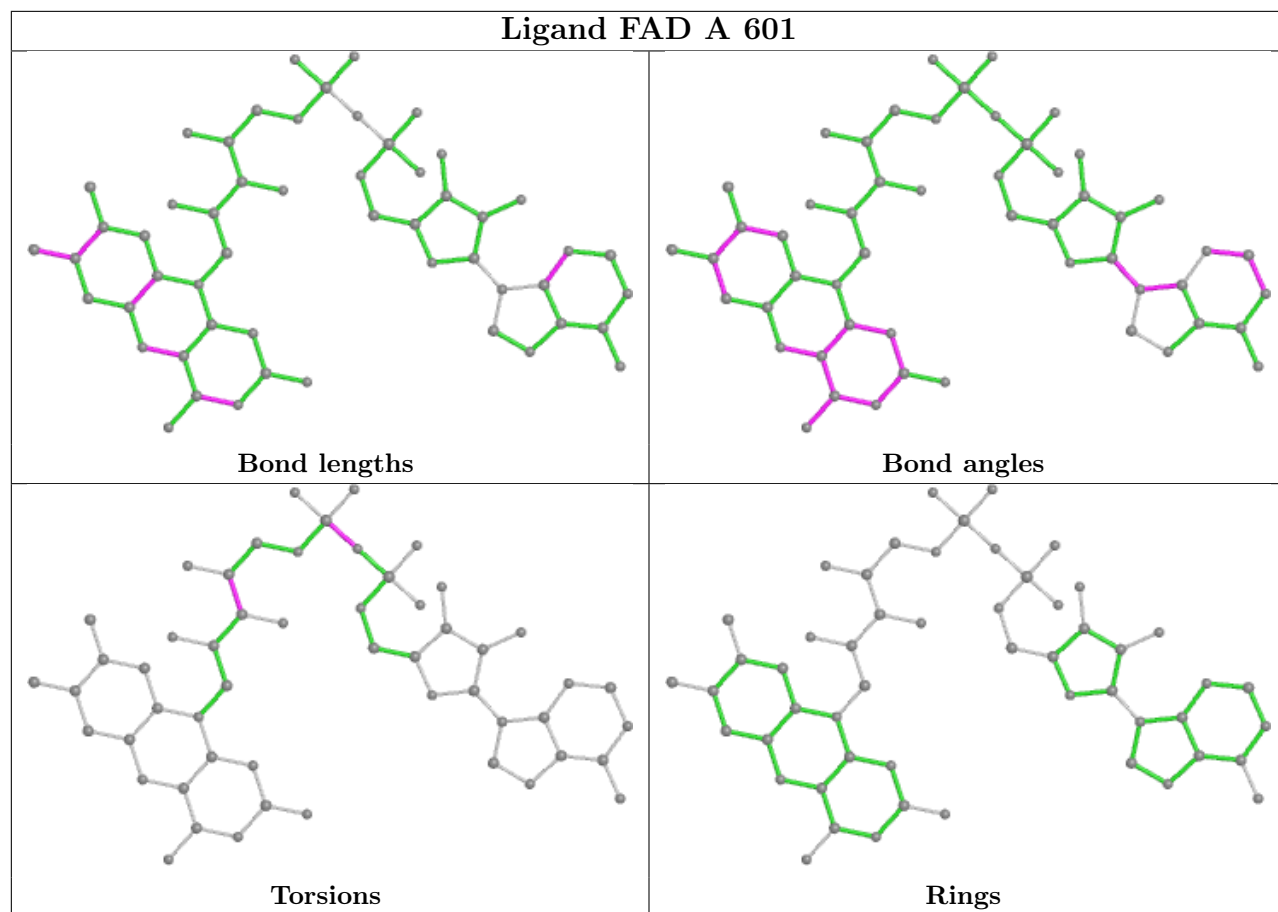
There are no ring outliers.

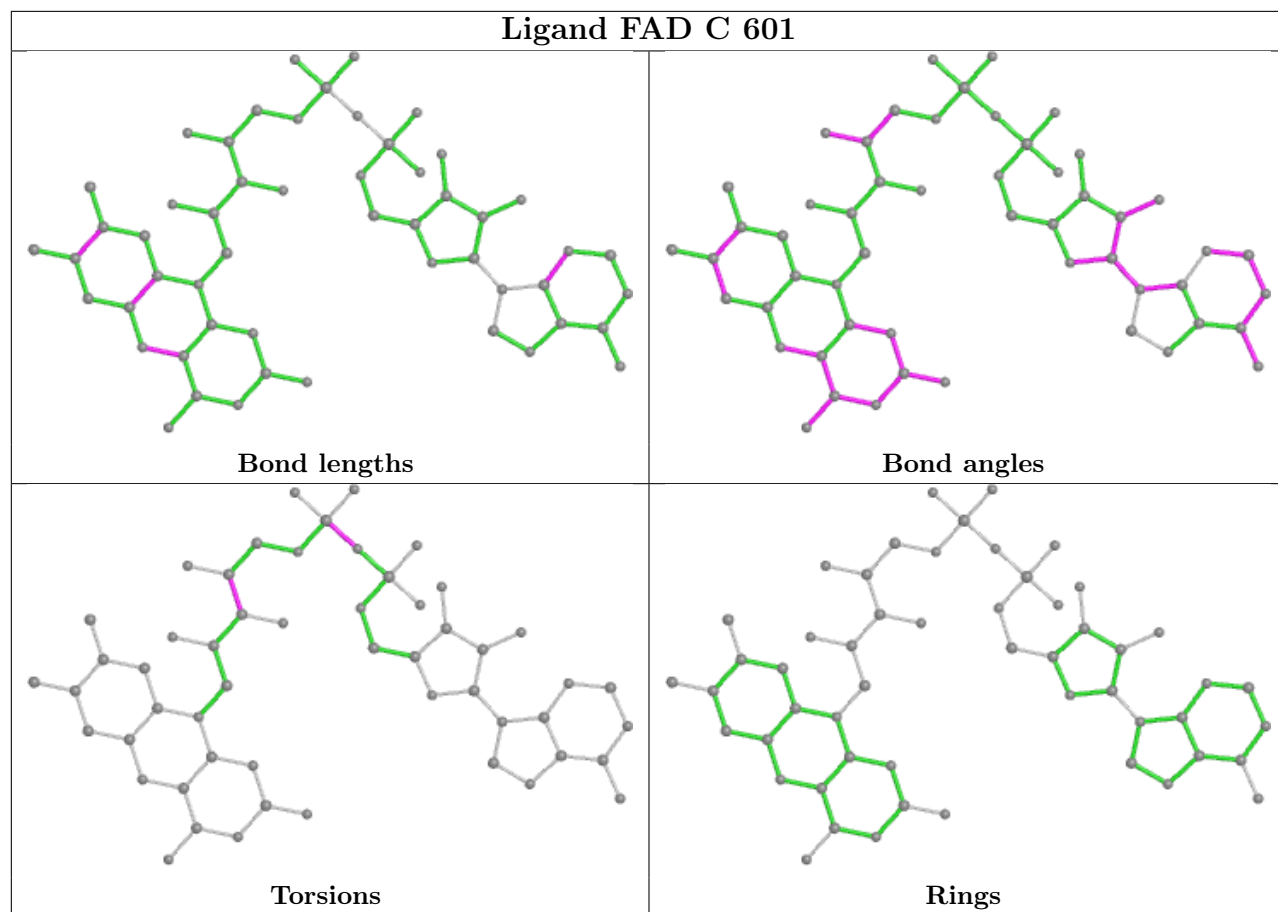
5 monomers are involved in 19 short contacts:

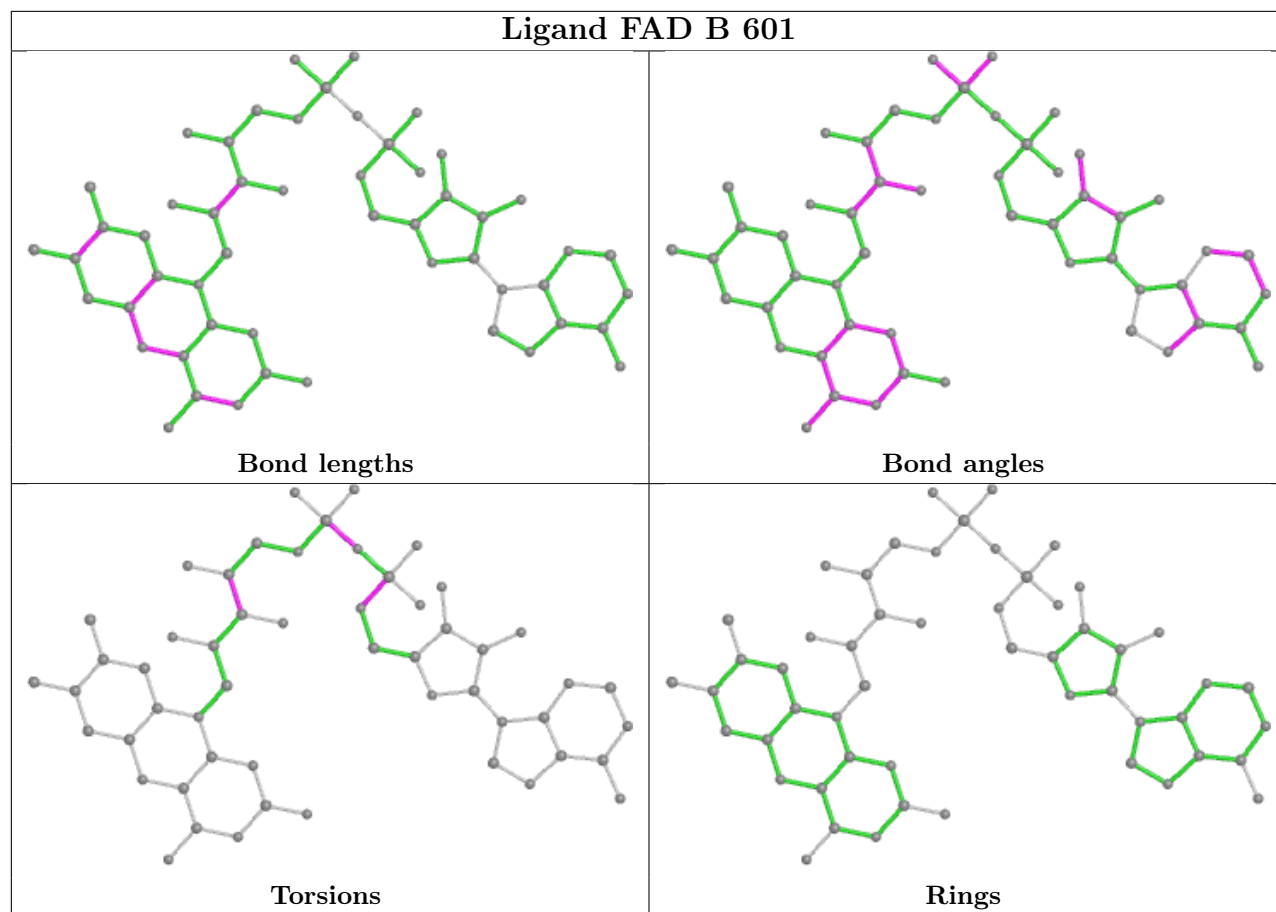
Mol	Chain	Res	Type	Clashes	Symm-Clashes
2	D	601	FAD	4	0
2	A	601	FAD	5	0
3	B	602	67L	1	0
2	C	601	FAD	5	0
2	B	601	FAD	5	0

The following is a two-dimensional graphical depiction of Mogul quality analysis of bond lengths, bond angles, torsion angles, and ring geometry for all instances of the Ligand of Interest. In addition, ligands with molecular weight > 250 and outliers as shown on the validation Tables will also be included. For torsion angles, if less than 5% of the Mogul distribution of torsion angles is within 10 degrees of the torsion angle in question, then that torsion angle is considered an outlier. Any bond that is central to one or more torsion angles identified as an outlier by Mogul will be highlighted in the graph. For rings, the root-mean-square deviation (RMSD) between the ring in question and similar rings identified by Mogul is calculated over all ring torsion angles. If the average RMSD is greater than 60 degrees and the minimal RMSD between the ring in question and any Mogul-identified rings is also greater than 60 degrees, then that ring is considered an outlier. The outliers are highlighted in purple. The color gray indicates Mogul did not find sufficient equivalents in the CSD to analyse the geometry.









5.7 Other polymers [i](#)

There are no such residues in this entry.

5.8 Polymer linkage issues [i](#)

There are no chain breaks in this entry.

6 Fit of model and data

6.1 Protein, DNA and RNA chains

In the following table, the column labelled ‘#RSRZ > 2’ contains the number (and percentage) of RSRZ outliers, followed by percent RSRZ outliers for the chain as percentile scores relative to all X-ray entries and entries of similar resolution. The OWAB column contains the minimum, median, 95th percentile and maximum values of the occupancy-weighted average B-factor per residue. The column labelled ‘Q < 0.9’ lists the number of (and percentage) of residues with an average occupancy less than 0.9.

Mol	Chain	Analysed	<RSRZ>	#RSRZ>2	OWAB(Å ²)	Q<0.9
1	A	498/500 (99%)	-0.14	7 (1%) 75 80	18, 29, 51, 65	0
1	B	498/500 (99%)	0.21	28 (5%) 24 33	19, 38, 64, 83	0
1	C	498/500 (99%)	-0.14	3 (0%) 89 91	16, 28, 49, 72	0
1	D	498/500 (99%)	0.07	11 (2%) 62 69	22, 34, 55, 75	0
All	All	1992/2000 (99%)	-0.00	49 (2%) 57 65	16, 32, 56, 83	0

All (49) RSRZ outliers are listed below:

Mol	Chain	Res	Type	RSRZ
1	A	208	VAL	6.0
1	B	367	ASP	4.1
1	B	258	ASP	4.1
1	B	415	GLU	4.0
1	D	307	ALA	3.8
1	B	288	VAL	3.8
1	B	209	GLY	3.8
1	B	208	VAL	3.8
1	A	206	ASP	3.7
1	B	297	TRP	3.7
1	C	12	ASP	3.6
1	D	3	THR	3.6
1	D	415	GLU	3.4
1	A	209	GLY	3.2
1	B	305	GLY	3.2
1	B	353	ARG	3.2
1	D	125	MET	3.2
1	B	290	ASP	3.2
1	B	210	ASP	3.0
1	B	308	VAL	2.9
1	B	293	GLU	2.9

Continued on next page...

Continued from previous page...

Mol	Chain	Res	Type	RSRZ
1	D	5	ALA	2.9
1	C	3	THR	2.9
1	D	12	ASP	2.8
1	D	367	ASP	2.8
1	B	260	PRO	2.6
1	D	297	TRP	2.5
1	D	412	ASP	2.5
1	B	354	GLU	2.5
1	B	307	ALA	2.4
1	B	125	MET	2.4
1	A	258	ASP	2.4
1	D	163	GLU	2.3
1	B	369	HIS	2.3
1	A	125	MET	2.2
1	B	306	VAL	2.2
1	B	366	ALA	2.2
1	A	176	ASP	2.2
1	A	210	ASP	2.1
1	B	234	GLU	2.1
1	D	500	ARG	2.1
1	B	236	THR	2.1
1	B	361	ARG	2.1
1	B	3	THR	2.1
1	B	461	THR	2.1
1	B	233	ALA	2.0
1	C	210	ASP	2.0
1	B	235	LEU	2.0
1	B	299	LEU	2.0

6.2 Non-standard residues in protein, DNA, RNA chains [i](#)

There are no non-standard protein/DNA/RNA residues in this entry.

6.3 Carbohydrates [i](#)

There are no monosaccharides in this entry.

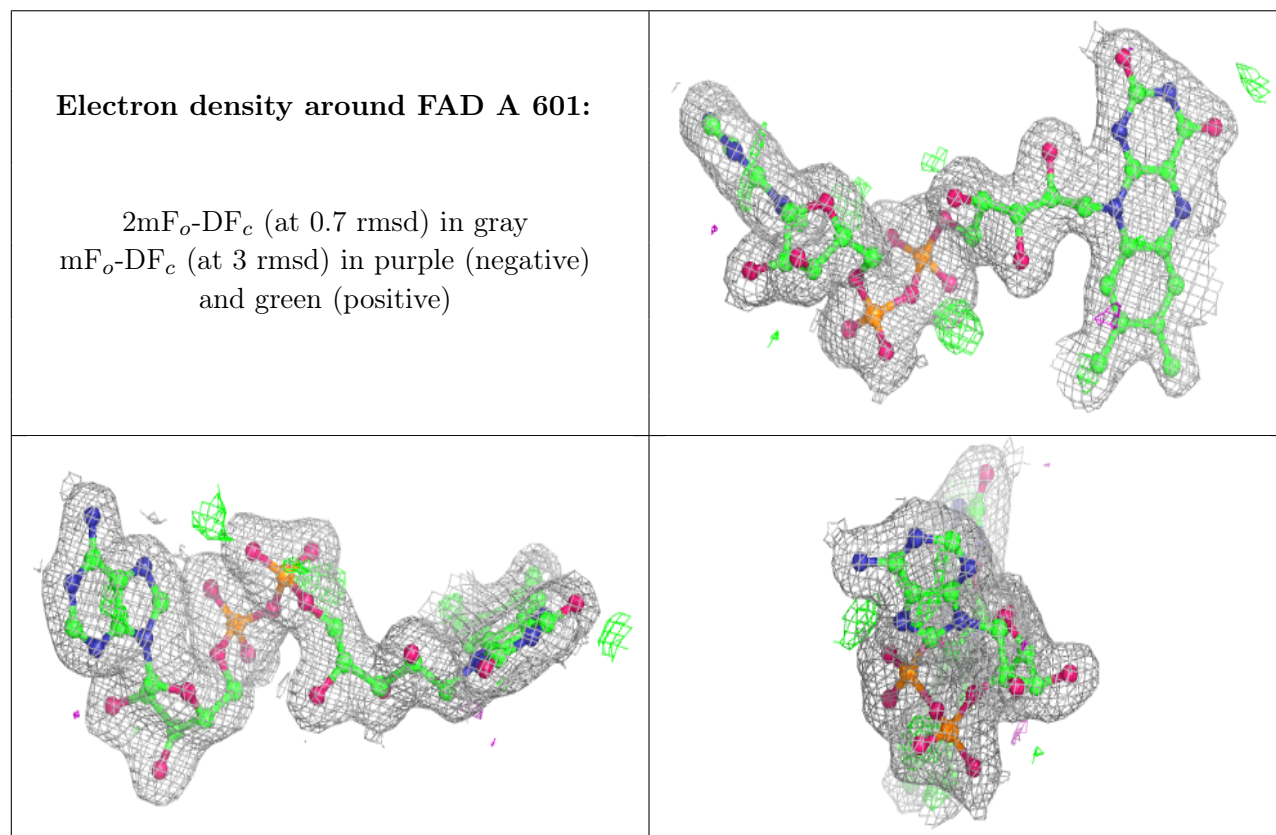
6.4 Ligands [i](#)

In the following table, the Atoms column lists the number of modelled atoms in the group and the number defined in the chemical component dictionary. The B-factors column lists the minimum,

median, 95th percentile and maximum values of B factors of atoms in the group. The column labelled 'Q< 0.9' lists the number of atoms with occupancy less than 0.9.

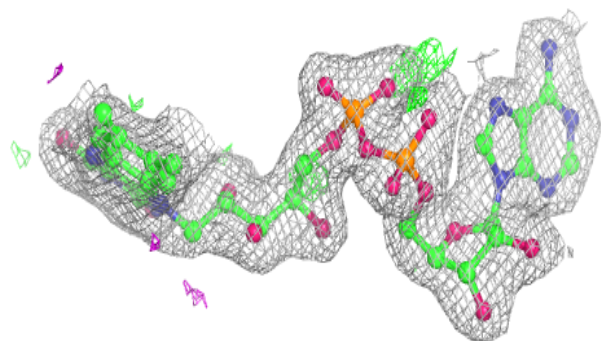
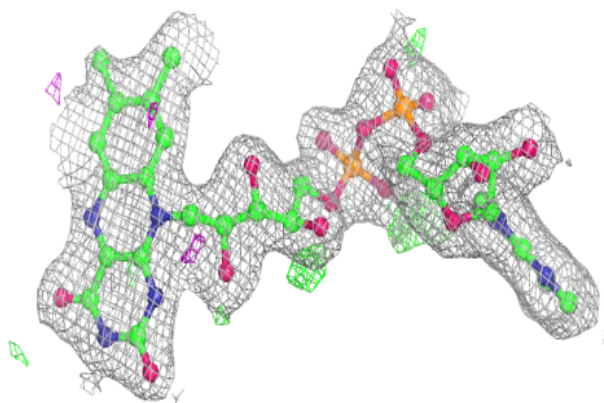
Mol	Type	Chain	Res	Atoms	RSCC	RSR	B-factors(Å ²)	Q<0.9
3	67L	C	602	15/15	0.84	0.16	33,41,54,55	0
3	67L	B	602	15/15	0.88	0.15	47,51,58,60	0
3	67L	A	602	15/15	0.90	0.14	35,39,55,57	0
4	67K	D	602	15/15	0.90	0.15	37,46,59,60	0
2	FAD	A	601	53/53	0.98	0.11	16,21,30,34	0
2	FAD	B	601	53/53	0.98	0.12	20,25,34,36	0
2	FAD	C	601	53/53	0.98	0.12	16,20,27,29	0
2	FAD	D	601	53/53	0.98	0.13	19,24,29,32	0

The following is a graphical depiction of the model fit to experimental electron density of all instances of the Ligand of Interest. In addition, ligands with molecular weight > 250 and outliers as shown on the geometry validation Tables will also be included. Each fit is shown from different orientation to approximate a three-dimensional view.

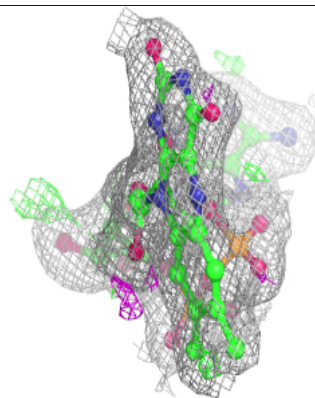
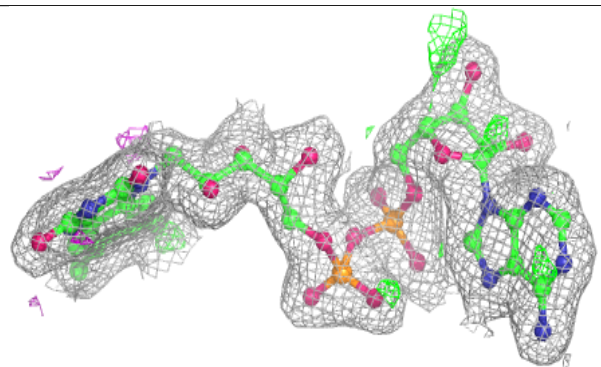
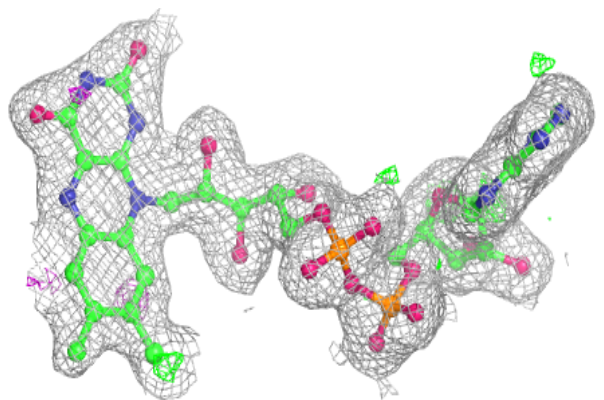


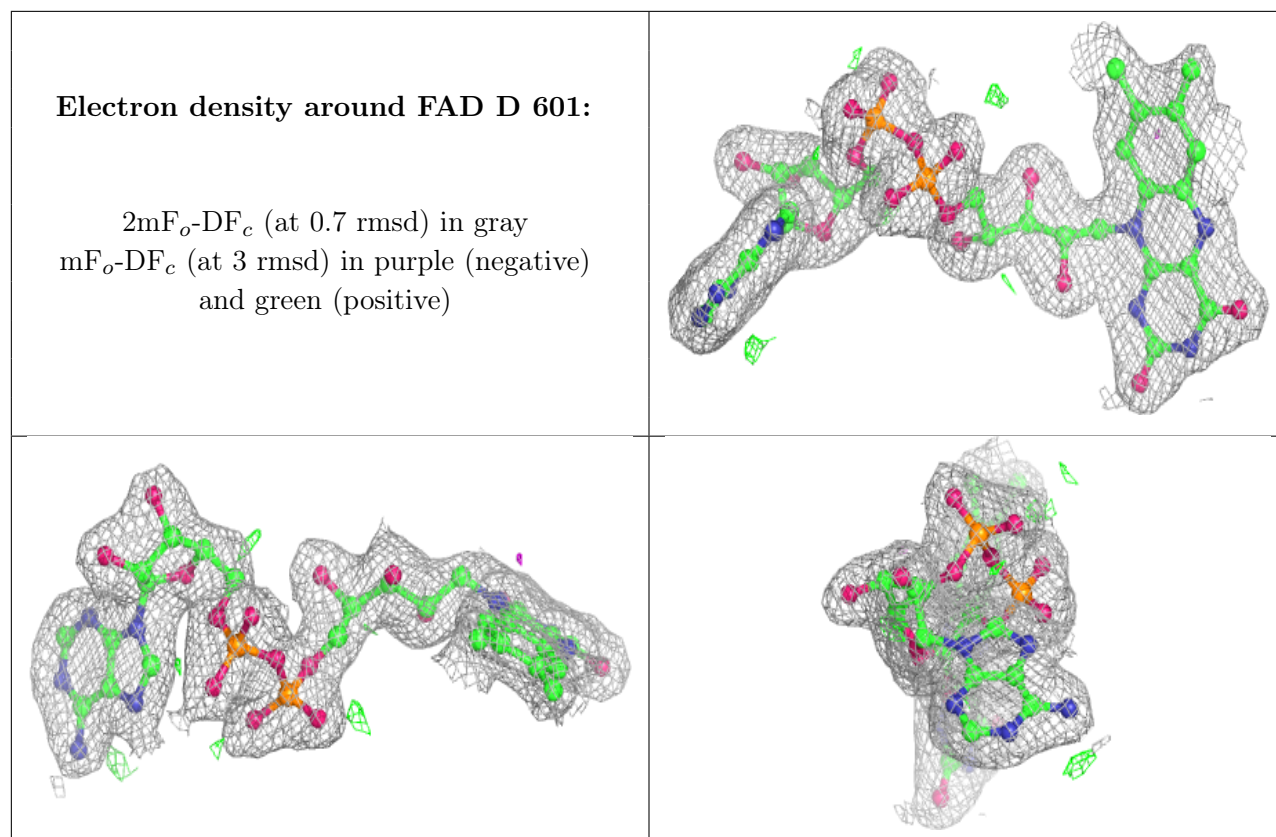
Electron density around FAD B 601:

$2mF_o-DF_c$ (at 0.7 rmsd) in gray
 mF_o-DF_c (at 3 rmsd) in purple (negative)
and green (positive)

**Electron density around FAD C 601:**

$2mF_o-DF_c$ (at 0.7 rmsd) in gray
 mF_o-DF_c (at 3 rmsd) in purple (negative)
and green (positive)





6.5 Other polymers [i](#)

There are no such residues in this entry.