



Full wwPDB X-ray Structure Validation Report ⓘ

May 16, 2020 – 07:10 am BST

PDB ID : 5HZC
Title : Crystal structure of the complex PPARgamma/AL26-29
Authors : Pochetti, G.; Montanari, R.; Capelli, D.; Loiodice, F.; Laghezza, A.; Lavecchia, A.
Deposited on : 2016-02-02
Resolution : 2.00 Å(reported)

This is a Full wwPDB X-ray Structure Validation Report for a publicly released PDB entry.

We welcome your comments at validation@mail.wwpdb.org

A user guide is available at

<https://www.wwpdb.org/validation/2017/XrayValidationReportHelp>

with specific help available everywhere you see the ⓘ symbol.

The following versions of software and data (see [references ⓘ](#)) were used in the production of this report:

MolProbity : 4.02b-467
Mogul : 1.8.5 (274361), CSD as541be (2020)
Xtriage (Phenix) : 1.13
EDS : 2.11
buster-report : 1.1.7 (2018)
Percentile statistics : 20191225.v01 (using entries in the PDB archive December 25th 2019)
Refmac : 5.8.0158
CCP4 : 7.0.044 (Gargrove)
Ideal geometry (proteins) : Engh & Huber (2001)
Ideal geometry (DNA, RNA) : Parkinson et al. (1996)
Validation Pipeline (wwPDB-VP) : 2.11

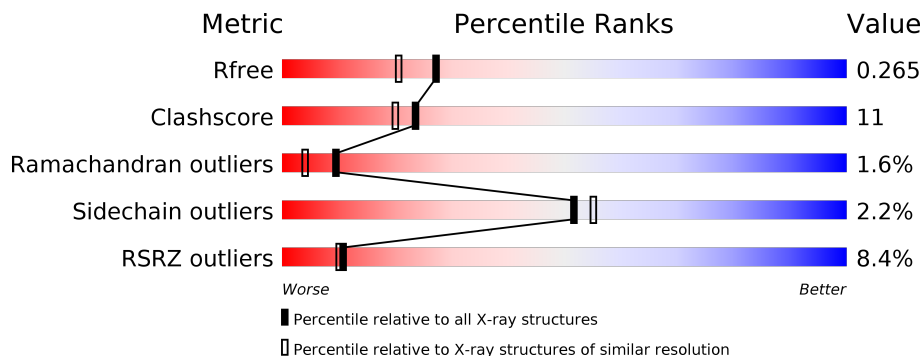
1 Overall quality at a glance

The following experimental techniques were used to determine the structure:

X-RAY DIFFRACTION

The reported resolution of this entry is 2.00 Å.

Percentile scores (ranging between 0-100) for global validation metrics of the entry are shown in the following graphic. The table shows the number of entries on which the scores are based.



Metric	Whole archive (#Entries)	Similar resolution (#Entries, resolution range(Å))
R_{free}	130704	8085 (2.00-2.00)
Clashscore	141614	9178 (2.00-2.00)
Ramachandran outliers	138981	9054 (2.00-2.00)
Sidechain outliers	138945	9053 (2.00-2.00)
RSRZ outliers	127900	7900 (2.00-2.00)

The table below summarises the geometric issues observed across the polymeric chains and their fit to the electron density. The red, orange, yellow and green segments on the lower bar indicate the fraction of residues that contain outliers for ≥ 3 , 2, 1 and 0 types of geometric quality criteria respectively. A grey segment represents the fraction of residues that are not modelled. The numeric value for each fraction is indicated below the corresponding segment, with a dot representing fractions $\leq 5\%$. The upper red bar (where present) indicates the fraction of residues that have poor fit to the electron density. The numeric value is given above the bar.

Mol	Chain	Length	Quality of chain
1	A	287	
1	B	287	

2 Entry composition

There are 3 unique types of molecules in this entry. The entry contains 4229 atoms, of which 0 are hydrogens and 0 are deuteriums.

In the tables below, the ZeroOcc column contains the number of atoms modelled with zero occupancy, the AltConf column contains the number of residues with at least one atom in alternate conformation and the Trace column contains the number of residues modelled with at most 2 atoms.

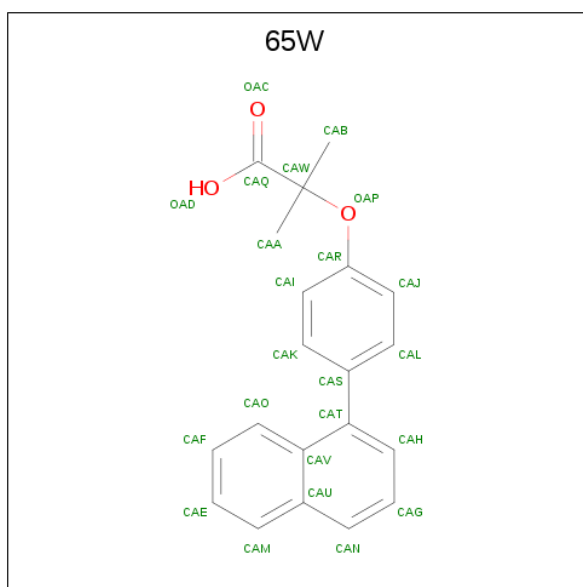
- Molecule 1 is a protein called Peroxisome proliferator-activated receptor gamma.

Mol	Chain	Residues	Atoms					ZeroOcc	AltConf	Trace
			Total	C	N	O	S			
1	A	251	2004	1294	327	373	10	0	0	0
1	B	250	1993	1288	323	372	10	0	0	0

There are 8 discrepancies between the modelled and reference sequences:

Chain	Residue	Modelled	Actual	Comment	Reference
A	191	GLY	-	expression tag	UNP P37231
A	192	SER	-	expression tag	UNP P37231
A	193	HIS	-	expression tag	UNP P37231
A	194	MET	-	expression tag	UNP P37231
B	191	GLY	-	expression tag	UNP P37231
B	192	SER	-	expression tag	UNP P37231
B	193	HIS	-	expression tag	UNP P37231
B	194	MET	-	expression tag	UNP P37231

- Molecule 2 is 2-methyl-2-[4-(naphthalen-1-yl)phenoxy]propanoic acid (three-letter code: 65W) (formula: C₂₀H₁₈O₃).



Mol	Chain	Residues	Atoms		ZeroOcc	AltConf	
2	A	1	Total	C	O	0	0
			23	20	3		
2	B	1	Total	C	O	0	0
			23	20	3		

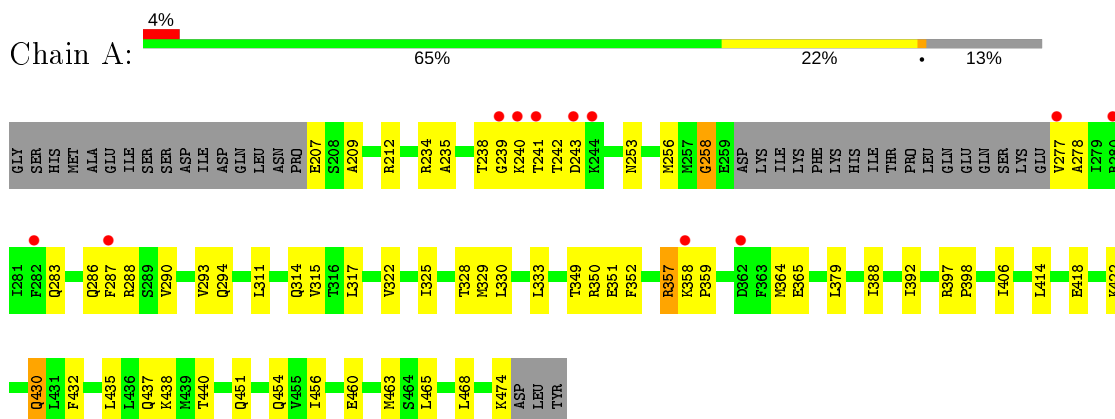
- Molecule 3 is water.

Mol	Chain	Residues	Atoms		ZeroOcc	AltConf
3	A	83	Total	O	0	0
			83	83		
3	B	103	Total	O	0	0
			103	103		

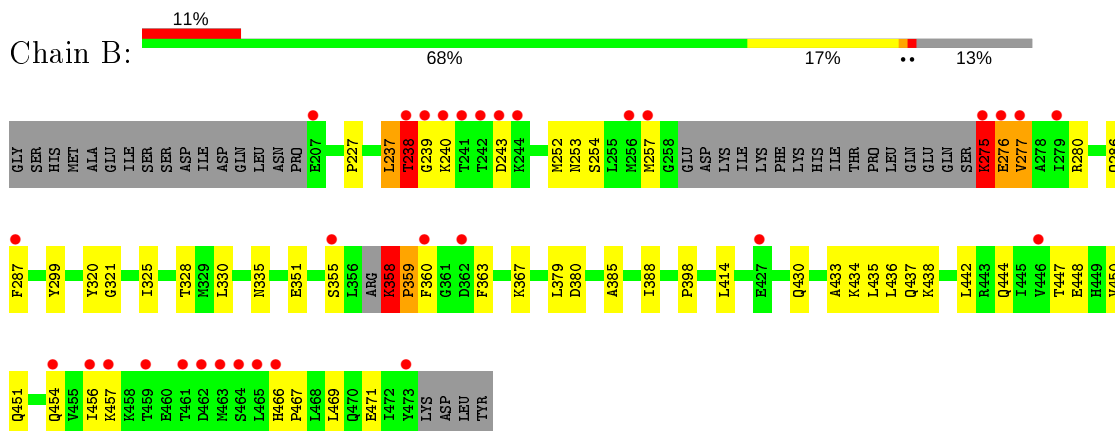
3 Residue-property plots [i](#)

These plots are drawn for all protein, RNA and DNA chains in the entry. The first graphic for a chain summarises the proportions of the various outlier classes displayed in the second graphic. The second graphic shows the sequence view annotated by issues in geometry and electron density. Residues are color-coded according to the number of geometric quality criteria for which they contain at least one outlier: green = 0, yellow = 1, orange = 2 and red = 3 or more. A red dot above a residue indicates a poor fit to the electron density ($RSRZ > 2$). Stretches of 2 or more consecutive residues without any outlier are shown as a green connector. Residues present in the sample, but not in the model, are shown in grey.

- Molecule 1: Peroxisome proliferator-activated receptor gamma



- Molecule 1: Peroxisome proliferator-activated receptor gamma



4 Data and refinement statistics

Property	Value	Source
Space group	C 1 2 1	Depositor
Cell constants a, b, c, α , β , γ	93.40Å 60.79Å 119.03Å 90.00° 103.37° 90.00°	Depositor
Resolution (Å)	40.75 – 2.00 40.75 – 2.00	Depositor EDS
% Data completeness (in resolution range)	97.7 (40.75-2.00) 95.7 (40.75-2.00)	Depositor EDS
R_{merge}	0.06	Depositor
R_{sym}	(Not available)	Depositor
$\langle I/\sigma(I) \rangle$ ¹	1.09 (at 2.00Å)	Xtrriage
Refinement program	PHENIX 1.8.4_1496	Depositor
R, R_{free}	0.224 , 0.270 0.225 , 0.265	Depositor DCC
R_{free} test set	2000 reflections (4.64%)	wwPDB-VP
Wilson B-factor (Å ²)	32.5	Xtrriage
Anisotropy	0.262	Xtrriage
Bulk solvent k_{sol} (e/Å ³), B_{sol} (Å ²)	0.37 , 55.8	EDS
L-test for twinning ²	$\langle L \rangle = 0.49$, $\langle L^2 \rangle = 0.33$	Xtrriage
Estimated twinning fraction	No twinning to report.	Xtrriage
F_o, F_c correlation	0.94	EDS
Total number of atoms	4229	wwPDB-VP
Average B, all atoms (Å ²)	44.0	wwPDB-VP

Xtrriage's analysis on translational NCS is as follows: *The largest off-origin peak in the Patterson function is 6.20% of the height of the origin peak. No significant pseudotranslation is detected.*

¹Intensities estimated from amplitudes.

²Theoretical values of $\langle |L| \rangle$, $\langle L^2 \rangle$ for acentric reflections are 0.5, 0.333 respectively for untwinned datasets, and 0.375, 0.2 for perfectly twinned datasets.

5 Model quality [i](#)

5.1 Standard geometry [i](#)

Bond lengths and bond angles in the following residue types are not validated in this section: 65W

The Z score for a bond length (or angle) is the number of standard deviations the observed value is removed from the expected value. A bond length (or angle) with $|Z| > 5$ is considered an outlier worth inspection. RMSZ is the root-mean-square of all Z scores of the bond lengths (or angles).

Mol	Chain	Bond lengths		Bond angles	
		RMSZ	# Z >5	RMSZ	# Z >5
1	A	0.50	1/2037 (0.0%)	0.62	2/2745 (0.1%)
1	B	0.50	1/2026 (0.0%)	0.63	2/2731 (0.1%)
All	All	0.50	2/4063 (0.0%)	0.63	4/5476 (0.1%)

Chiral center outliers are detected by calculating the chiral volume of a chiral center and verifying if the center is modelled as a planar moiety or with the opposite hand. A planarity outlier is detected by checking planarity of atoms in a peptide group, atoms in a mainchain group or atoms of a sidechain that are expected to be planar.

Mol	Chain	#Chirality outliers	#Planarity outliers
1	A	0	2
1	B	0	1
All	All	0	3

All (2) bond length outliers are listed below:

Mol	Chain	Res	Type	Atoms	Z	Observed(Å)	Ideal(Å)
1	B	275	LYS	C-N	12.04	1.61	1.34
1	A	258	GLY	C-N	-10.54	1.09	1.34

All (4) bond angle outliers are listed below:

Mol	Chain	Res	Type	Atoms	Z	Observed(°)	Ideal(°)
1	A	258	GLY	O-C-N	-9.07	108.19	122.70
1	B	275	LYS	C-N-CA	-8.78	99.76	121.70
1	A	258	GLY	C-N-CA	7.80	141.21	121.70
1	B	275	LYS	CA-C-N	-6.85	102.13	117.20

There are no chirality outliers.

All (3) planarity outliers are listed below:

Mol	Chain	Res	Type	Group
1	A	258	GLY	Mainchain
1	A	357	ARG	Peptide
1	B	275	LYS	Mainchain

5.2 Too-close contacts [i](#)

In the following table, the Non-H and H(model) columns list the number of non-hydrogen atoms and hydrogen atoms in the chain respectively. The H(added) column lists the number of hydrogen atoms added and optimized by MolProbity. The Clashes column lists the number of clashes within the asymmetric unit, whereas Symm-Clashes lists symmetry related clashes.

Mol	Chain	Non-H	H(model)	H(added)	Clashes	Symm-Clashes
1	A	2004	0	2063	53	1
1	B	1993	0	2051	40	1
2	A	23	0	0	1	0
2	B	23	0	0	0	0
3	A	83	0	0	19	0
3	B	103	0	0	7	0
All	All	4229	0	4114	91	1

The all-atom clashscore is defined as the number of clashes found per 1000 atoms (including hydrogen atoms). The all-atom clashscore for this structure is 11.

All (91) close contacts within the same asymmetric unit are listed below, sorted by their clash magnitude.

Atom-1	Atom-2	Interatomic distance (Å)	Clash overlap (Å)
1:B:275:LYS:O	3:B:601:HOH:O	1.89	0.90
1:B:325:ILE:HD12	1:B:388:ILE:HG23	1.61	0.82
1:A:349:THR:HG21	3:A:671:HOH:O	1.86	0.76
1:B:253:ASN:O	1:B:257:MET:HG3	1.90	0.71
1:A:277:VAL:HG23	1:A:278:ALA:H	1.54	0.71
1:A:207:GLU:HG3	1:A:209:ALA:H	1.56	0.70
1:A:311:LEU:O	3:A:601:HOH:O	2.11	0.69
1:A:325:ILE:HG23	1:A:388:ILE:HD12	1.75	0.68
1:A:430:GLN:HE21	1:B:414:LEU:HB3	1.59	0.65
1:A:328:THR:HA	3:A:656:HOH:O	1.96	0.64
1:A:311:LEU:HD12	1:A:311:LEU:H	1.64	0.63
1:A:357:ARG:NH2	1:A:460:GLU:OE2	2.31	0.62
1:A:364:MET:SD	3:A:620:HOH:O	2.56	0.61
3:A:639:HOH:O	1:B:444:GLN:HG3	2.00	0.61
3:A:616:HOH:O	1:B:436:LEU:HB3	2.01	0.60

Continued on next page...

Continued from previous page...

Atom-1	Atom-2	Interatomic distance (Å)	Clash overlap (Å)
1:A:277:VAL:HG23	1:A:278:ALA:N	2.18	0.59
1:A:330:LEU:HD12	3:A:640:HOH:O	2.03	0.59
1:A:451:GLN:NE2	3:A:606:HOH:O	2.35	0.58
1:B:454:GLN:O	1:B:457:LYS:HG2	2.02	0.58
1:A:325:ILE:HD11	1:A:392:ILE:HG13	1.86	0.58
1:A:418:GLU:O	1:A:422:LYS:HG3	2.04	0.57
1:A:315:VAL:HG23	3:A:601:HOH:O	2.03	0.56
1:B:467:PRO:O	1:B:471:GLU:HG2	2.06	0.56
1:B:237:LEU:O	1:B:239:GLY:N	2.39	0.56
1:A:238:THR:O	1:A:240:LYS:N	2.34	0.56
1:A:358:LYS:HD3	1:A:358:LYS:N	2.19	0.56
1:B:456:ILE:HG13	3:B:699:HOH:O	2.07	0.54
1:A:293:VAL:HG22	1:A:322:VAL:HG11	1.89	0.54
1:A:454:GLN:OE1	3:A:602:HOH:O	2.18	0.54
1:B:430:GLN:HG3	1:B:433:ALA:HB3	1.90	0.54
1:A:333:LEU:HB2	3:A:640:HOH:O	2.08	0.54
1:A:314:GLN:HB2	3:A:601:HOH:O	2.08	0.54
1:B:238:THR:HG22	1:B:335:ASN:HD22	1.72	0.53
1:A:287:PHE:O	1:A:290:VAL:HG12	2.09	0.53
1:A:349:THR:HG22	1:A:352:PHE:H	1.74	0.51
1:A:290:VAL:HB	3:A:610:HOH:O	2.10	0.51
1:B:286:GLN:HG3	3:B:696:HOH:O	2.10	0.51
1:A:329:MET:HG2	3:A:634:HOH:O	2.10	0.51
1:B:447:THR:O	1:B:450:VAL:HG22	2.12	0.50
1:B:243:ASP:OD1	1:B:243:ASP:N	2.44	0.50
1:B:448:GLU:O	1:B:451:GLN:HG2	2.11	0.50
1:A:288:ARG:NH2	2:A:501:65W:OAD	2.44	0.50
1:B:321:GLY:O	1:B:325:ILE:HG12	2.12	0.50
1:B:358:LYS:HB2	1:B:359:PRO:HD3	1.93	0.50
1:A:437:GLN:O	1:A:440:THR:HG22	2.12	0.50
1:B:287:PHE:HB2	3:B:607:HOH:O	2.11	0.50
1:B:276:GLU:O	1:B:280:ARG:N	2.30	0.48
1:A:235:ALA:O	1:A:241:THR:OG1	2.32	0.48
1:B:328:THR:OG1	1:B:442:LEU:HD11	2.14	0.48
1:B:451:GLN:O	1:B:454:GLN:HG2	2.14	0.48
1:A:286:GLN:OE1	1:A:465:LEU:HD12	2.13	0.48
1:A:234:ARG:HD3	1:A:234:ARG:HA	1.71	0.47
1:A:243:ASP:OD1	3:A:603:HOH:O	2.20	0.47
1:B:252:MET:SD	1:B:277:VAL:HG11	2.54	0.47
1:B:351:GLU:OE1	3:B:602:HOH:O	2.20	0.47
1:A:293:VAL:HG11	1:A:468:LEU:HD11	1.97	0.47

Continued on next page...

Continued from previous page...

Atom-1	Atom-2	Interatomic distance (Å)	Clash overlap (Å)
1:B:360:PHE:O	1:B:363:PHE:HD2	1.98	0.46
1:B:238:THR:OG1	1:B:239:GLY:N	2.48	0.46
1:B:434:LYS:O	1:B:438:LYS:HD3	2.16	0.46
1:A:283:GLN:HE21	1:A:463:MET:HG2	1.81	0.46
1:B:355:SER:OG	1:B:355:SER:O	2.31	0.46
1:A:243:ASP:HB3	3:A:668:HOH:O	2.15	0.45
1:A:430:GLN:HG3	3:A:643:HOH:O	2.15	0.45
1:A:359:PRO:HB2	1:A:456:ILE:HD11	1.97	0.45
1:A:317:LEU:HD21	1:A:406:ILE:HD13	1.97	0.45
1:A:364:MET:HA	3:A:620:HOH:O	2.15	0.45
1:A:474:LYS:HD3	1:A:474:LYS:HA	1.84	0.45
1:A:253:ASN:HA	1:A:256:MET:HG2	1.98	0.45
1:A:325:ILE:HD13	1:A:388:ILE:HG23	1.99	0.44
1:A:438:LYS:HD3	1:A:438:LYS:HA	1.81	0.44
1:A:414:LEU:HB3	1:B:430:GLN:HG2	2.00	0.44
1:B:456:ILE:HD13	1:B:456:ILE:HA	1.74	0.44
1:A:277:VAL:CG2	1:A:278:ALA:H	2.23	0.43
1:B:275:LYS:O	1:B:276:GLU:HB2	2.19	0.43
1:A:397:ARG:HA	1:A:398:PRO:HD3	1.88	0.43
1:A:349:THR:HG22	1:A:351:GLU:N	2.33	0.43
1:B:363:PHE:O	1:B:367:LYS:HE2	2.19	0.43
1:B:237:LEU:O	1:B:238:THR:C	2.57	0.43
1:B:380:ASP:HB2	3:B:611:HOH:O	2.18	0.43
1:A:283:GLN:HE21	1:A:463:MET:CG	2.32	0.42
1:B:358:LYS:HD2	1:B:359:PRO:HD3	1.99	0.42
1:B:253:ASN:HB2	3:B:669:HOH:O	2.20	0.42
1:A:238:THR:C	1:A:240:LYS:H	2.20	0.42
1:B:320:TYR:CZ	1:B:398:PRO:HG2	2.55	0.42
1:B:299:TYR:OH	1:B:385:ALA:O	2.32	0.41
1:A:379:LEU:HD11	1:A:435:LEU:HD13	2.02	0.41
1:A:212:ARG:HA	1:A:212:ARG:HD2	1.83	0.41
1:A:350:ARG:NH2	1:A:365:GLU:OE2	2.38	0.41
1:B:276:GLU:H	1:B:280:ARG:HG3	1.87	0.40
1:A:432:PHE:HB3	3:A:643:HOH:O	2.21	0.40
1:B:379:LEU:HD11	1:B:435:LEU:HD13	2.04	0.40

All (1) symmetry-related close contacts are listed below. The label for Atom-2 includes the symmetry operator and encoded unit-cell translations to be applied.

Atom-1	Atom-2	Interatomic distance (Å)	Clash overlap (Å)
1:A:294:GLN:NE2	1:B:471:GLU:OE1[3_455]	2.16	0.04

5.3 Torsion angles [i](#)

5.3.1 Protein backbone [i](#)

In the following table, the Percentiles column shows the percent Ramachandran outliers of the chain as a percentile score with respect to all X-ray entries followed by that with respect to entries of similar resolution.

The Analysed column shows the number of residues for which the backbone conformation was analysed, and the total number of residues.

Mol	Chain	Analysed	Favoured	Allowed	Outliers	Percentiles	
1	A	247/287 (86%)	241 (98%)	5 (2%)	1 (0%)	34	30
1	B	246/287 (86%)	228 (93%)	11 (4%)	7 (3%)	5	1
All	All	493/574 (86%)	469 (95%)	16 (3%)	8 (2%)	9	4

All (8) Ramachandran outliers are listed below:

Mol	Chain	Res	Type
1	B	238	THR
1	B	240	LYS
1	B	277	VAL
1	A	239	GLY
1	B	237	LEU
1	B	358	LYS
1	B	227	PRO
1	B	359	PRO

5.3.2 Protein sidechains [i](#)

In the following table, the Percentiles column shows the percent sidechain outliers of the chain as a percentile score with respect to all X-ray entries followed by that with respect to entries of similar resolution.

The Analysed column shows the number of residues for which the sidechain conformation was analysed, and the total number of residues.

Mol	Chain	Analysed	Rotameric	Outliers	Percentiles	
1	A	224/258 (87%)	222 (99%)	2 (1%)	78	83
1	B	223/258 (86%)	215 (96%)	8 (4%)	35	34
All	All	447/516 (87%)	437 (98%)	10 (2%)	52	55

All (10) residues with a non-rotameric sidechain are listed below:

Mol	Chain	Res	Type
1	A	242	THR
1	A	430	GLN
1	B	238	THR
1	B	254	SER
1	B	276	GLU
1	B	330	LEU
1	B	358	LYS
1	B	437	GLN
1	B	466	HIS
1	B	469	LEU

Some sidechains can be flipped to improve hydrogen bonding and reduce clashes. All (2) such sidechains are listed below:

Mol	Chain	Res	Type
1	A	283	GLN
1	A	430	GLN

5.3.3 RNA [i](#)

There are no RNA molecules in this entry.

5.4 Non-standard residues in protein, DNA, RNA chains [i](#)

There are no non-standard protein/DNA/RNA residues in this entry.

5.5 Carbohydrates [i](#)

There are no carbohydrates in this entry.

5.6 Ligand geometry [i](#)

2 ligands are modelled in this entry.

In the following table, the Counts columns list the number of bonds (or angles) for which Mogul statistics could be retrieved, the number of bonds (or angles) that are observed in the model and the number of bonds (or angles) that are defined in the Chemical Component Dictionary. The Link column lists molecule types, if any, to which the group is linked. The Z score for a bond length (or angle) is the number of standard deviations the observed value is removed from the expected value. A bond length (or angle) with $|Z| > 2$ is considered an outlier worth inspection. RMSZ is the root-mean-square of all Z scores of the bond lengths (or angles).

Mol	Type	Chain	Res	Link	Bond lengths			Bond angles		
					Counts	RMSZ	# Z > 2	Counts	RMSZ	# Z > 2
2	65W	A	501	-	22,25,25	0.97	1 (4%)	32,36,36	0.98	1 (3%)
2	65W	B	501	-	22,25,25	1.05	2 (9%)	32,36,36	1.25	3 (9%)

In the following table, the Chirals column lists the number of chiral outliers, the number of chiral centers analysed, the number of these observed in the model and the number defined in the Chemical Component Dictionary. Similar counts are reported in the Torsion and Rings columns. '-' means no outliers of that kind were identified.

Mol	Type	Chain	Res	Link	Chirals	Torsions	Rings
2	65W	A	501	-	-	2/9/15/15	0/3/3/3
2	65W	B	501	-	-	4/9/15/15	0/3/3/3

All (3) bond length outliers are listed below:

Mol	Chain	Res	Type	Atoms	Z	Observed(Å)	Ideal(Å)
2	A	501	65W	CAV-CAU	-2.77	1.37	1.43
2	B	501	65W	CAV-CAU	-2.55	1.38	1.43
2	B	501	65W	OAP-CAW	-2.22	1.41	1.45

All (4) bond angle outliers are listed below:

Mol	Chain	Res	Type	Atoms	Z	Observed(°)	Ideal(°)
2	B	501	65W	CAK-CAS-CAT	-3.51	114.95	120.86
2	B	501	65W	CAL-CAS-CAT	3.13	126.11	120.86
2	A	501	65W	CAB-CAW-CAQ	-2.49	106.04	111.86
2	B	501	65W	CAB-CAW-CAQ	-2.35	106.36	111.86

There are no chirality outliers.

All (6) torsion outliers are listed below:

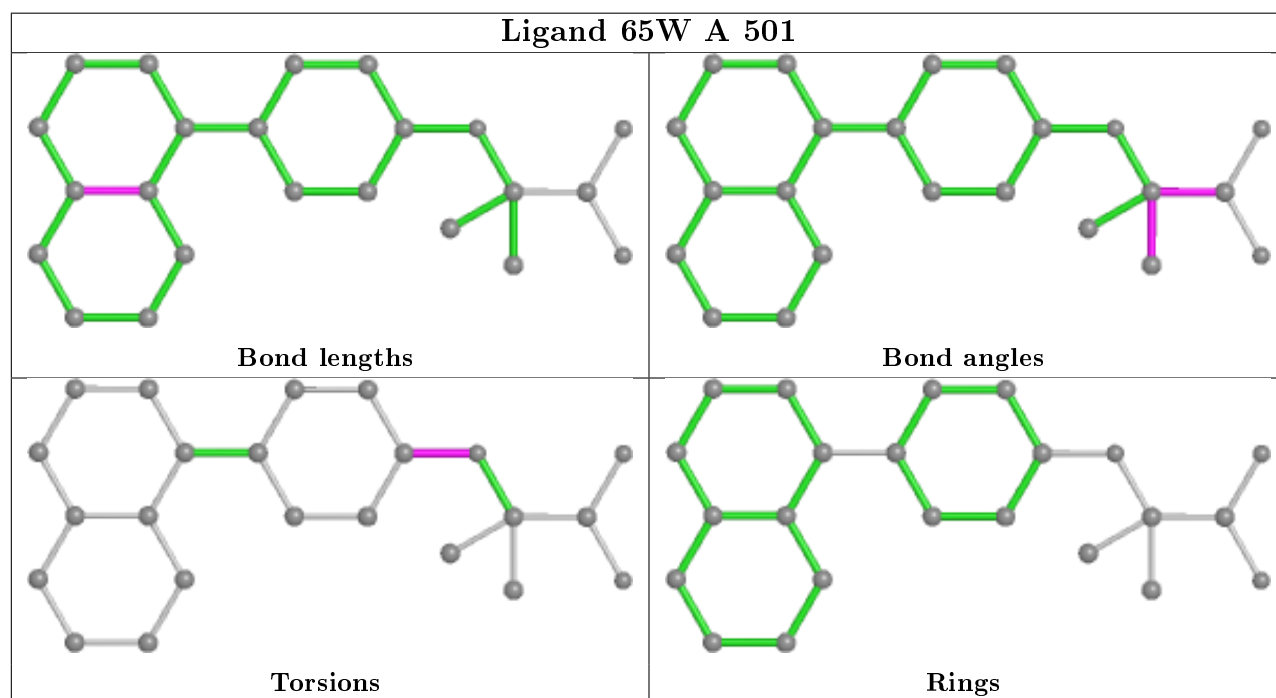
Mol	Chain	Res	Type	Atoms
2	A	501	65W	CAI-CAR-OAP-CAW
2	A	501	65W	CAJ-CAR-OAP-CAW
2	B	501	65W	CAK-CAS-CAT-CAH
2	B	501	65W	CAL-CAS-CAT-CAH
2	B	501	65W	CAK-CAS-CAT-CAV
2	B	501	65W	CAL-CAS-CAT-CAV

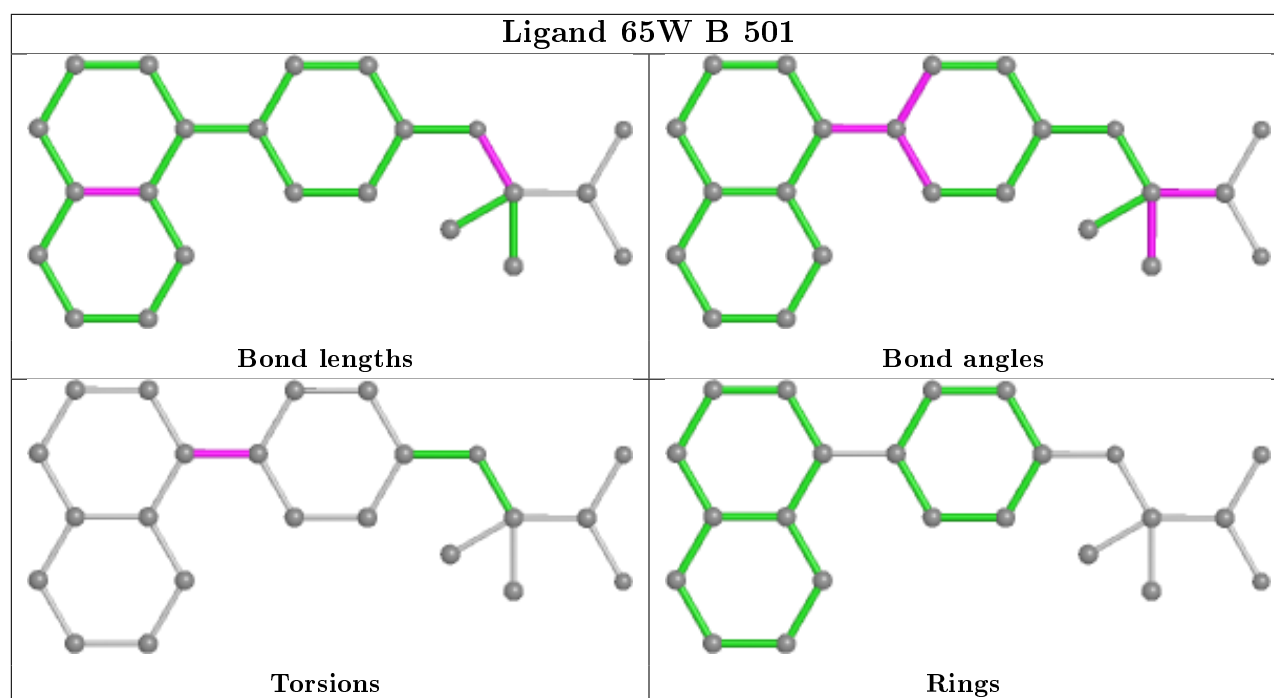
There are no ring outliers.

1 monomer is involved in 1 short contact:

Mol	Chain	Res	Type	Clashes	Symm-Clashes
2	A	501	65W	1	0

The following is a two-dimensional graphical depiction of Mogul quality analysis of bond lengths, bond angles, torsion angles, and ring geometry for all instances of the Ligand of Interest. In addition, ligands with molecular weight > 250 and outliers as shown on the validation Tables will also be included. For torsion angles, if less than 5% of the Mogul distribution of torsion angles is within 10 degrees of the torsion angle in question, then that torsion angle is considered an outlier. Any bond that is central to one or more torsion angles identified as an outlier by Mogul will be highlighted in the graph. For rings, the root-mean-square deviation (RMSD) between the ring in question and similar rings identified by Mogul is calculated over all ring torsion angles. If the average RMSD is greater than 60 degrees and the minimal RMSD between the ring in question and any Mogul-identified rings is also greater than 60 degrees, then that ring is considered an outlier. The outliers are highlighted in purple. The color gray indicates Mogul did not find sufficient equivalents in the CSD to analyse the geometry.





5.7 Other polymers [i](#)

There are no such residues in this entry.

5.8 Polymer linkage issues [i](#)

The following chains have linkage breaks:

Mol	Chain	Number of breaks
1	B	1
1	A	1

All chain breaks are listed below:

Model	Chain	Residue-1	Atom-1	Residue-2	Atom-2	Distance (Å)
1	B	275:LYS	C	276:GLU	N	1.61
1	A	258:GLY	C	259:GLU	N	1.09

6 Fit of model and data

6.1 Protein, DNA and RNA chains

In the following table, the column labelled ‘#RSRZ> 2’ contains the number (and percentage) of RSRZ outliers, followed by percent RSRZ outliers for the chain as percentile scores relative to all X-ray entries and entries of similar resolution. The OWAB column contains the minimum, median, 95th percentile and maximum values of the occupancy-weighted average B-factor per residue. The column labelled ‘Q< 0.9’ lists the number of (and percentage) of residues with an average occupancy less than 0.9.

Mol	Chain	Analysed	<RSRZ>	#RSRZ>2	OWAB(Å ²)	Q<0.9
1	A	251/287 (87%)	0.10	11 (4%) 34 33	24, 40, 61, 81	0
1	B	250/287 (87%)	0.88	31 (12%) 4 3	24, 40, 79, 101	0
All	All	501/574 (87%)	0.49	42 (8%) 11 10	24, 40, 71, 101	0

All (42) RSRZ outliers are listed below:

Mol	Chain	Res	Type	RSRZ
1	B	463	MET	17.5
1	B	465	LEU	17.4
1	B	242	THR	7.5
1	B	464	SER	7.5
1	B	462	ASP	7.3
1	B	240	LYS	6.0
1	B	238	THR	5.8
1	B	243	ASP	5.8
1	A	282	PHE	5.7
1	B	241	THR	5.5
1	A	239	GLY	5.5
1	B	456	ILE	5.4
1	B	473	TYR	5.4
1	B	461	THR	5.2
1	B	466	HIS	5.1
1	A	240	LYS	4.5
1	B	257	MET	4.4
1	A	241	THR	4.2
1	B	360	PHE	3.8
1	A	243	ASP	3.7
1	A	358	LYS	3.5
1	B	207	GLU	3.4
1	B	276	GLU	3.4
1	B	362	ASP	3.4

Continued on next page...

Continued from previous page...

Mol	Chain	Res	Type	RSRZ
1	B	277	VAL	3.2
1	B	239	GLY	3.2
1	B	459	THR	3.0
1	A	362	ASP	2.9
1	B	244	LYS	2.9
1	B	355	SER	2.9
1	B	427	GLU	2.8
1	B	457	LYS	2.8
1	A	280	ARG	2.8
1	B	454	GLN	2.8
1	A	287	PHE	2.8
1	B	256	MET	2.7
1	A	244	LYS	2.5
1	A	277	VAL	2.4
1	B	287	PHE	2.3
1	B	279	ILE	2.1
1	B	275	LYS	2.1
1	B	446	VAL	2.1

6.2 Non-standard residues in protein, DNA, RNA chains [i](#)

There are no non-standard protein/DNA/RNA residues in this entry.

6.3 Carbohydrates [i](#)

There are no carbohydrates in this entry.

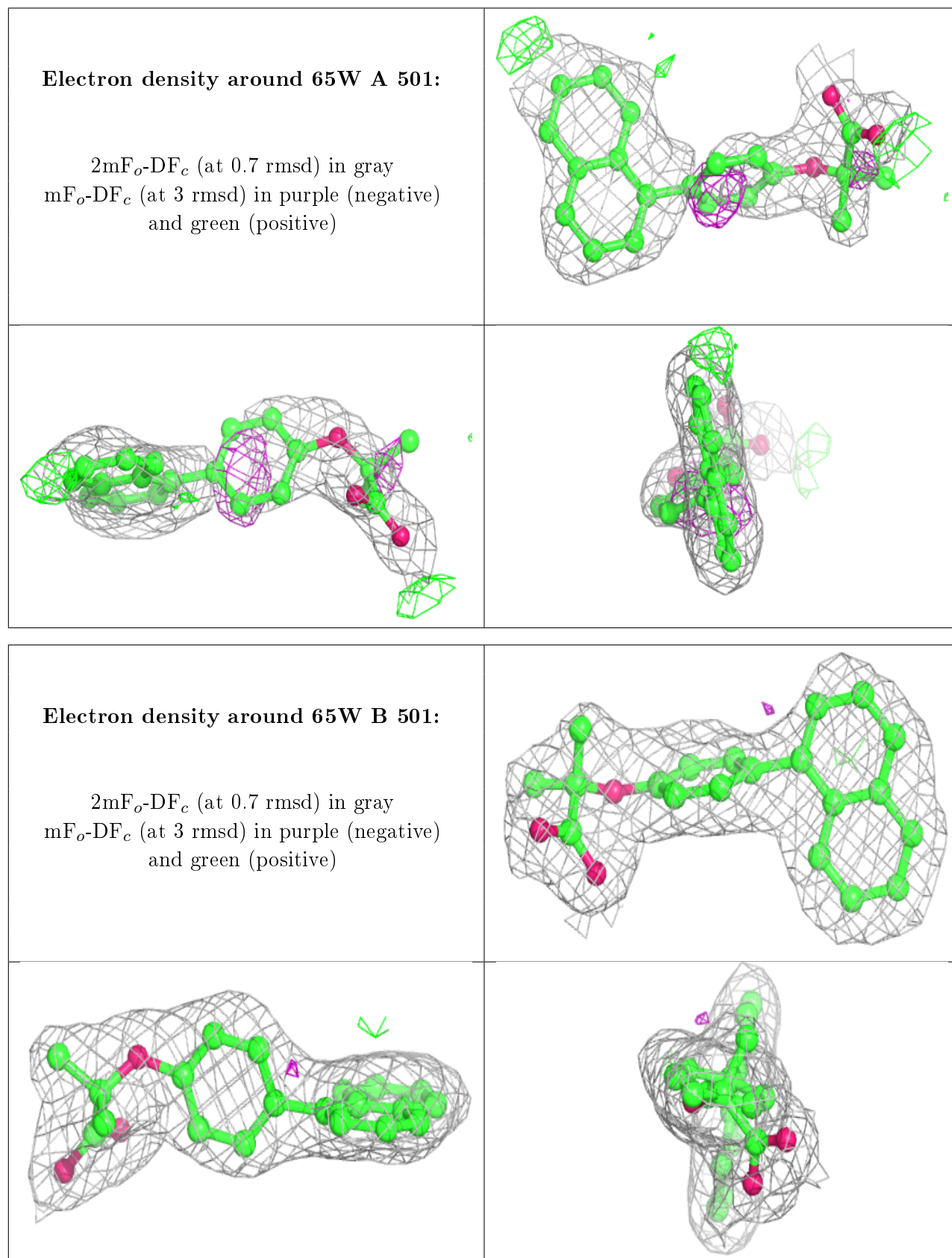
6.4 Ligands [i](#)

In the following table, the Atoms column lists the number of modelled atoms in the group and the number defined in the chemical component dictionary. The B-factors column lists the minimum, median, 95th percentile and maximum values of B factors of atoms in the group. The column labelled 'Q< 0.9' lists the number of atoms with occupancy less than 0.9.

Mol	Type	Chain	Res	Atoms	RSCC	RSR	B-factors(Å ²)	Q<0.9
2	65W	A	501	23/23	0.74	0.26	42,55,59,60	0
2	65W	B	501	23/23	0.95	0.13	31,37,42,44	0

The following is a graphical depiction of the model fit to experimental electron density of all instances of the Ligand of Interest. In addition, ligands with molecular weight > 250 and outliers

as shown on the geometry validation Tables will also be included. Each fit is shown from different orientation to approximate a three-dimensional view.



6.5 Other polymers

There are no such residues in this entry.