



Full wwPDB X-ray Structure Validation Report ⓘ

Jun 16, 2020 – 12:16 am BST

PDB ID : 6HNU
Title : Crystal structure of the aminotransferase Aro8 from *C. Albicans* with ligands
Authors : Kiliszek, A.; Rzad, K.; Rypniewski, W.; Milewski, S.; Gabriel, I.
Deposited on : 2018-09-17
Resolution : 1.80 Å(reported)

This is a Full wwPDB X-ray Structure Validation Report for a publicly released PDB entry.

We welcome your comments at validation@mail.wwpdb.org

A user guide is available at

<https://www.wwpdb.org/validation/2017/XrayValidationReportHelp>

with specific help available everywhere you see the ⓘ symbol.

The following versions of software and data (see [references ⓘ](#)) were used in the production of this report:

MolProbity : 4.02b-467
Mogul : 1.8.5 (274361), CSD as541be (2020)
Xtriage (Phenix) : 1.13
EDS : 2.11
Percentile statistics : 20191225.v01 (using entries in the PDB archive December 25th 2019)
Refmac : 5.8.0158
CCP4 : 7.0.044 (Gargrove)
Ideal geometry (proteins) : Engh & Huber (2001)
Ideal geometry (DNA, RNA) : Parkinson et al. (1996)
Validation Pipeline (wwPDB-VP) : 2.11

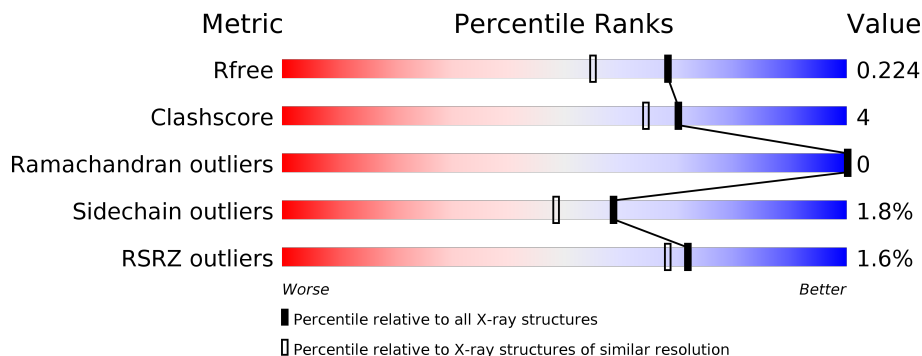
1 Overall quality at a glance

The following experimental techniques were used to determine the structure:

X-RAY DIFFRACTION

The reported resolution of this entry is 1.80 Å.

Percentile scores (ranging between 0-100) for global validation metrics of the entry are shown in the following graphic. The table shows the number of entries on which the scores are based.



Metric	Whole archive (#Entries)	Similar resolution (#Entries, resolution range(Å))
R_{free}	130704	5950 (1.80-1.80)
Clashscore	141614	6793 (1.80-1.80)
Ramachandran outliers	138981	6697 (1.80-1.80)
Sidechain outliers	138945	6696 (1.80-1.80)
RSRZ outliers	127900	5850 (1.80-1.80)

The table below summarises the geometric issues observed across the polymeric chains and their fit to the electron density. The red, orange, yellow and green segments on the lower bar indicate the fraction of residues that contain outliers for ≥ 3 , 2, 1 and 0 types of geometric quality criteria respectively. A grey segment represents the fraction of residues that are not modelled. The numeric value for each fraction is indicated below the corresponding segment, with a dot representing fractions $\leq 5\%$. The upper red bar (where present) indicates the fraction of residues that have poor fit to the electron density. The numeric value is given above the bar.

Mol	Chain	Length	Quality of chain
1	A	491	 89% 8%
1	B	491	 91% 7%

2 Entry composition [i](#)

There are 7 unique types of molecules in this entry. The entry contains 8881 atoms, of which 0 are hydrogens and 0 are deuteriums.

In the tables below, the ZeroOcc column contains the number of atoms modelled with zero occupancy, the AltConf column contains the number of residues with at least one atom in alternate conformation and the Trace column contains the number of residues modelled with at most 2 atoms.

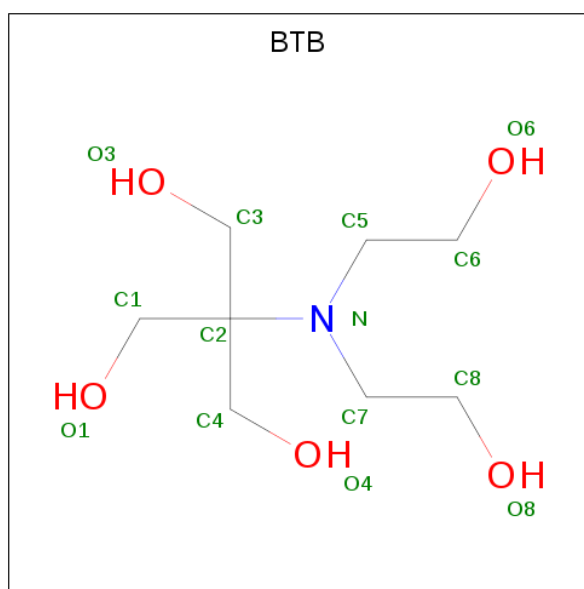
- Molecule 1 is a protein called Aromatic amino acid aminotransferase I.

Mol	Chain	Residues	Atoms					ZeroOcc	AltConf	Trace
			Total	C	N	O	S			
1	A	479	3828	2470	629	719	10	0	11	0
1	B	480	3832	2473	628	721	10	0	11	0

There are 2 discrepancies between the modelled and reference sequences:

Chain	Residue	Modelled	Actual	Comment	Reference
A	111	LEU	SER	conflict	UNP C4YJ02
B	111	LEU	SER	conflict	UNP C4YJ02

- Molecule 2 is 2-[BIS-(2-HYDROXY-ETHYL)-AMINO]-2-HYDROXYMETHYL-PROPAN E-1,3-DIOL (three-letter code: BTB) (formula: C₈H₁₉NO₅).



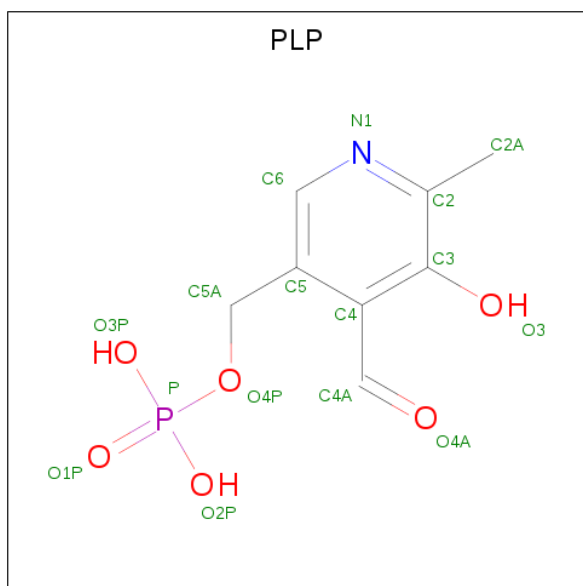
Mol	Chain	Residues	Atoms				ZeroOcc	AltConf
			Total	C	N	O		
2	A	1	14	8	1	5	0	0

Continued on next page...

Continued from previous page...

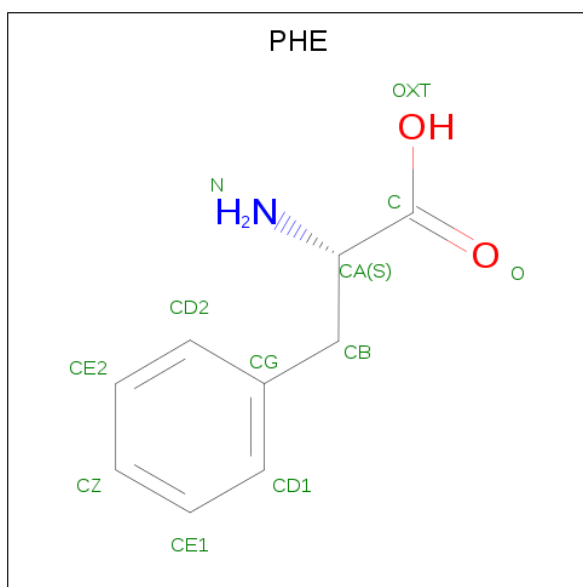
Mol	Chain	Residues	Atoms				ZeroOcc	AltConf
			Total	C	N	O		
2	B	1	14	8	1	5	0	0

- Molecule 3 is PYRIDOXAL-5'-PHOSPHATE (three-letter code: PLP) (formula: $C_8H_{10}NO_6P$).



Mol	Chain	Residues	Atoms					ZeroOcc	AltConf
			Total	C	N	O	P		
3	A	1	15	8	1	5	1	0	0
3	B	1	15	8	1	5	1	0	0

- Molecule 4 is PHENYLALANINE (three-letter code: PHE) (formula: $C_9H_{11}NO_2$).



Mol	Chain	Residues	Atoms				ZeroOcc	AltConf
4	A	1	Total	C	N	O	0	0
			12	9	1	2		
4	B	1	Total	C	N	O	0	0
			12	9	1	2		

- Molecule 5 is CHLORIDE ION (three-letter code: CL) (formula: Cl).

Mol	Chain	Residues	Atoms		ZeroOcc	AltConf
5	B	2	Total	Cl	0	0
			2	2		
5	A	2	Total	Cl	0	0
			2	2		

- Molecule 6 is 2-AMINO-2-HYDROXYMETHYL-PROPANE-1,3-DIOL (three-letter code: TRS) (formula: C₄H₁₂NO₃).



Mol	Chain	Residues	Atoms				ZeroOcc	AltConf
			Total	C	N	O		
6	B	1	8	4	1	3	0	0

- Molecule 7 is water.

Mol	Chain	Residues	Atoms		ZeroOcc	AltConf
			Total	O		
7	A	557	557	557	0	0
7	B	568	570	570	0	2

4 Data and refinement statistics

Property	Value	Source
Space group	P 21 21 21	Depositor
Cell constants a, b, c, α , β , γ	69.78Å 102.09Å 146.88Å 90.00° 90.00° 90.00°	Depositor
Resolution (Å)	45.33 – 1.80 45.33 – 1.80	Depositor EDS
% Data completeness (in resolution range)	99.6 (45.33-1.80) 99.6 (45.33-1.80)	Depositor EDS
R_{merge}	0.10	Depositor
R_{sym}	(Not available)	Depositor
$\langle I/\sigma(I) \rangle$ ¹	1.67 (at 1.81Å)	Xtrriage
Refinement program	REFMAC 5.8.0232	Depositor
R, R_{free}	0.174 , 0.219 0.181 , 0.224	Depositor DCC
R_{free} test set	4851 reflections (5.00%)	wwPDB-VP
Wilson B-factor (Å ²)	19.6	Xtrriage
Anisotropy	0.143	Xtrriage
Bulk solvent k_{sol} (e/Å ³), B_{sol} (Å ²)	0.33 , 43.4	EDS
L-test for twinning ²	$\langle L \rangle = 0.49$, $\langle L^2 \rangle = 0.32$	Xtrriage
Estimated twinning fraction	No twinning to report.	Xtrriage
F_o, F_c correlation	0.96	EDS
Total number of atoms	8881	wwPDB-VP
Average B, all atoms (Å ²)	26.0	wwPDB-VP

Xtrriage's analysis on translational NCS is as follows: *The analyses of the Patterson function reveals a significant off-origin peak that is 34.93 % of the origin peak, indicating pseudo-translational symmetry. The chance of finding a peak of this or larger height randomly in a structure without pseudo-translational symmetry is equal to 6.3145e-04. The detected translational NCS is most likely also responsible for the elevated intensity ratio.*

¹Intensities estimated from amplitudes.

²Theoretical values of $\langle |L| \rangle$, $\langle L^2 \rangle$ for acentric reflections are 0.5, 0.333 respectively for untwinned datasets, and 0.375, 0.2 for perfectly twinned datasets.

5 Model quality [i](#)

5.1 Standard geometry [i](#)

Bond lengths and bond angles in the following residue types are not validated in this section: TRS, PLP, CL, BTB

The Z score for a bond length (or angle) is the number of standard deviations the observed value is removed from the expected value. A bond length (or angle) with $|Z| > 5$ is considered an outlier worth inspection. RMSZ is the root-mean-square of all Z scores of the bond lengths (or angles).

Mol	Chain	Bond lengths		Bond angles	
		RMSZ	# Z >5	RMSZ	# Z >5
1	A	0.73	0/3965	0.84	0/5374
1	B	0.75	0/3968	0.83	0/5380
All	All	0.74	0/7933	0.83	0/10754

There are no bond length outliers.

There are no bond angle outliers.

There are no chirality outliers.

There are no planarity outliers.

5.2 Too-close contacts [i](#)

In the following table, the Non-H and H(model) columns list the number of non-hydrogen atoms and hydrogen atoms in the chain respectively. The H(added) column lists the number of hydrogen atoms added and optimized by MolProbity. The Clashes column lists the number of clashes within the asymmetric unit, whereas Symm-Clashes lists symmetry related clashes.

Mol	Chain	Non-H	H(model)	H(added)	Clashes	Symm-Clashes
1	A	3828	0	3790	29	0
1	B	3832	0	3797	32	0
2	A	14	0	19	0	0
2	B	14	0	19	0	0
3	A	15	0	6	2	0
3	B	15	0	7	1	0
4	A	12	0	8	1	0
4	B	12	0	8	1	0
5	A	2	0	0	0	0
5	B	2	0	0	0	0
6	B	8	0	12	1	0

Continued on next page...

Continued from previous page...

Mol	Chain	Non-H	H(model)	H(added)	Clashes	Symm-Clashes
7	A	557	0	0	8	0
7	B	570	0	0	12	0
All	All	8881	0	7666	56	0

The all-atom clashscore is defined as the number of clashes found per 1000 atoms (including hydrogen atoms). The all-atom clashscore for this structure is 4.

All (56) close contacts within the same asymmetric unit are listed below, sorted by their clash magnitude.

Atom-1	Atom-2	Interatomic distance (Å)	Clash overlap (Å)
1:B:146:ASP:OD1	7:B:601:HOH:O	1.87	0.91
1:A:467:ALA:O	1:B:49:LEU:HD12	1.73	0.88
1:A:167[B]:SER:OG	7:A:601:HOH:O	1.90	0.88
1:B:49:LEU:HD13	1:B:49:LEU:H	1.39	0.86
1:B:227[B]:GLU:CD	7:B:625:HOH:O	2.13	0.85
1:B:422:GLU:OE1	7:B:616[B]:HOH:O	1.98	0.82
1:B:227[B]:GLU:HG2	7:B:625:HOH:O	1.81	0.78
1:B:457:LYS:HA	7:B:793:HOH:O	1.85	0.77
1:B:227[B]:GLU:CG	7:B:625:HOH:O	2.32	0.75
1:A:6:LYS:N	7:A:604:HOH:O	2.21	0.73
1:A:134:ASP:OD2	7:A:602:HOH:O	2.05	0.72
1:B:116:GLN:OE1	6:B:504:TRS:H21	1.97	0.64
1:A:300:LYS:HZ1	3:A:502:PLP:C4A	2.12	0.62
1:B:472:ASP:O	1:B:475[B]:VAL:HG22	1.99	0.62
1:A:49:LEU:HA	7:A:708:HOH:O	2.01	0.59
1:B:49:LEU:HD23	1:B:51:ASP:HB2	1.85	0.58
1:B:381:GLU:N	1:B:381:GLU:OE2	2.29	0.53
1:A:329:VAL:CG1	1:B:329:VAL:HG12	2.38	0.53
1:A:256:THR:O	1:A:267:LYS:NZ	2.42	0.52
1:A:300:LYS:NZ	3:A:502:PLP:C4A	2.72	0.52
1:A:305:GLY:HA3	1:B:103:LEU:HA	1.90	0.52
4:A:503:PHE:CG	4:A:503:PHE:O	2.63	0.52
1:B:193[A]:GLU:HG3	7:B:745:HOH:O	2.10	0.51
1:B:128:VAL:HG22	1:B:284[A]:ILE:CG2	2.40	0.51
1:A:48:PRO:HD3	7:B:644:HOH:O	2.11	0.50
1:B:49:LEU:HD13	1:B:49:LEU:N	2.17	0.50
1:A:329:VAL:HG12	1:B:329:VAL:CG1	2.42	0.49
1:B:401:SER:HB3	1:B:458:THR:HB	1.95	0.48
1:A:376:GLN:NE2	1:A:377:PHE:CZ	2.81	0.47
1:B:49:LEU:CD1	1:B:49:LEU:H	2.18	0.47
1:A:64[B]:THR:HG22	1:A:81:THR:OG1	2.15	0.46

Continued on next page...

Continued from previous page...

Atom-1	Atom-2	Interatomic distance (Å)	Clash overlap (Å)
1:B:300:LYS:NZ	3:B:502:PLP:C4A	2.79	0.46
1:B:95:ASP:OD1	7:B:602:HOH:O	2.21	0.46
1:A:422:GLU:HG2	7:A:1085:HOH:O	2.16	0.46
1:A:36:LYS:HE2	1:A:37:GLN:HG2	1.98	0.46
1:B:49:LEU:HD21	1:B:52:TYR:CE2	2.51	0.45
1:A:103:LEU:HA	1:B:305:GLY:HA3	1.99	0.45
4:B:503:PHE:OXT	4:B:503:PHE:CG	2.69	0.45
1:B:422:GLU:HG3	7:B:962:HOH:O	2.17	0.45
1:A:472:ASP:O	1:A:475[B]:VAL:HG22	2.18	0.43
1:A:9:ALA:HB2	1:A:130:TYR:CD2	2.53	0.43
1:A:87:LYS:HA	1:A:99:LEU:HB2	2.01	0.43
1:A:88:LYS:HD3	7:A:1139:HOH:O	2.18	0.43
1:A:270:HIS:O	7:A:603:HOH:O	2.21	0.43
1:A:475[B]:VAL:CG2	7:A:749:HOH:O	2.67	0.42
1:B:265:GLU:HG2	7:B:897:HOH:O	2.19	0.42
1:B:35:TYR:OH	1:B:47:LEU:HD12	2.20	0.42
1:A:197:GLU:OE2	1:A:201:ARG:NE	2.49	0.42
1:A:329:VAL:HG12	1:B:329:VAL:HG12	2.02	0.42
1:B:49:LEU:HD21	1:B:52:TYR:CD2	2.55	0.41
1:A:49:LEU:HD11	1:A:52:TYR:CZ	2.56	0.41
1:B:87:LYS:HA	1:B:99:LEU:HB2	2.02	0.41
1:A:75:ILE:HB	1:B:56:GLU:HB2	2.01	0.41
1:A:143:GLU:OE2	1:A:325:HIS:NE2	2.49	0.41
1:A:64[B]:THR:HG23	1:A:79:ASN:C	2.41	0.41
1:B:8:GLN:NE2	7:B:606:HOH:O	2.38	0.40

There are no symmetry-related clashes.

5.3 Torsion angles [i](#)

5.3.1 Protein backbone [i](#)

In the following table, the Percentiles column shows the percent Ramachandran outliers of the chain as a percentile score with respect to all X-ray entries followed by that with respect to entries of similar resolution.

The Analysed column shows the number of residues for which the backbone conformation was analysed, and the total number of residues.

Mol	Chain	Analysed	Favoured	Allowed	Outliers	Percentiles
1	A	486/491 (99%)	474 (98%)	12 (2%)	0	100 100

Continued on next page...

Continued from previous page...

Mol	Chain	Analysed	Favoured	Allowed	Outliers	Percentiles	
1	B	487/491 (99%)	474 (97%)	13 (3%)	0	100	100
All	All	973/982 (99%)	948 (97%)	25 (3%)	0	100	100

There are no Ramachandran outliers to report.

5.3.2 Protein sidechains [i](#)

In the following table, the Percentiles column shows the percent sidechain outliers of the chain as a percentile score with respect to all X-ray entries followed by that with respect to entries of similar resolution.

The Analysed column shows the number of residues for which the sidechain conformation was analysed, and the total number of residues.

Mol	Chain	Analysed	Rotameric	Outliers	Percentiles	
1	A	420/420 (100%)	411 (98%)	9 (2%)	53	42
1	B	420/420 (100%)	413 (98%)	7 (2%)	60	51
All	All	840/840 (100%)	824 (98%)	16 (2%)	59	46

All (16) residues with a non-rotameric sidechain are listed below:

Mol	Chain	Res	Type
1	A	29	LYS
1	A	36	LYS
1	A	49	LEU
1	A	50	SER
1	A	219	PRO
1	A	277	LYS
1	A	330[A]	GLN
1	A	330[B]	GLN
1	A	486	ARG
1	B	33	LYS
1	B	49	LEU
1	B	127	LYS
1	B	201	ARG
1	B	315	LYS
1	B	449	ASN
1	B	486	ARG

Some sidechains can be flipped to improve hydrogen bonding and reduce clashes. There are no such sidechains identified.

5.3.3 RNA [i](#)

There are no RNA molecules in this entry.

5.4 Non-standard residues in protein, DNA, RNA chains [i](#)

There are no non-standard protein/DNA/RNA residues in this entry.

5.5 Carbohydrates [i](#)

There are no carbohydrates in this entry.

5.6 Ligand geometry [i](#)

Of 11 ligands modelled in this entry, 4 are monoatomic - leaving 7 for Mogul analysis.

In the following table, the Counts columns list the number of bonds (or angles) for which Mogul statistics could be retrieved, the number of bonds (or angles) that are observed in the model and the number of bonds (or angles) that are defined in the Chemical Component Dictionary. The Link column lists molecule types, if any, to which the group is linked. The Z score for a bond length (or angle) is the number of standard deviations the observed value is removed from the expected value. A bond length (or angle) with $|Z| > 2$ is considered an outlier worth inspection. RMSZ is the root-mean-square of all Z scores of the bond lengths (or angles).

Mol	Type	Chain	Res	Link	Bond lengths			Bond angles		
					Counts	RMSZ	# Z > 2	Counts	RMSZ	# Z > 2
2	BTB	A	501	-	13,13,13	1.08	1 (7%)	7,16,16	0.40	0
6	TRS	B	504	-	7,7,7	0.36	0	9,9,9	0.59	0
3	PLP	A	502	4	15,15,16	0.76	1 (6%)	20,22,23	0.94	1 (5%)
2	BTB	B	501	-	13,13,13	0.83	0	7,16,16	0.30	0
3	PLP	B	502	4	15,15,16	0.87	1 (6%)	20,22,23	0.83	1 (5%)

In the following table, the Chirals column lists the number of chiral outliers, the number of chiral centers analysed, the number of these observed in the model and the number defined in the Chemical Component Dictionary. Similar counts are reported in the Torsion and Rings columns. '-' means no outliers of that kind were identified.

Mol	Type	Chain	Res	Link	Chirals	Torsions	Rings
2	BTB	A	501	-	-	1/21/21/21	-
6	TRS	B	504	-	-	7/9/9/9	-
3	PLP	A	502	4	-	0/6/6/8	0/1/1/1
2	BTB	B	501	-	-	3/21/21/21	-

Continued on next page...

Continued from previous page...

Mol	Type	Chain	Res	Link	Chirals	Torsions	Rings
3	PLP	B	502	4	-	0/6/6/8	0/1/1/1

All (3) bond length outliers are listed below:

Mol	Chain	Res	Type	Atoms	Z	Observed(Å)	Ideal(Å)
2	A	501	BTB	C5-N	2.67	1.51	1.48
3	B	502	PLP	C4A-C4	-2.43	1.46	1.51
3	A	502	PLP	C4A-C4	-2.17	1.47	1.51

All (2) bond angle outliers are listed below:

Mol	Chain	Res	Type	Atoms	Z	Observed(°)	Ideal(°)
3	A	502	PLP	O2P-P-O4P	-2.30	100.62	106.73
3	B	502	PLP	O4P-P-O1P	-2.03	100.78	106.47

There are no chirality outliers.

All (11) torsion outliers are listed below:

Mol	Chain	Res	Type	Atoms
2	A	501	BTB	C3-C2-C4-O4
2	B	501	BTB	C1-C2-C4-O4
2	B	501	BTB	C3-C2-C4-O4
2	B	501	BTB	N-C2-C4-O4
6	B	504	TRS	C2-C-C1-O1
6	B	504	TRS	C3-C-C1-O1
6	B	504	TRS	N-C-C1-O1
6	B	504	TRS	N-C-C2-O2
6	B	504	TRS	C3-C-C2-O2
6	B	504	TRS	C1-C-C2-O2
6	B	504	TRS	C2-C-C3-O3

There are no ring outliers.

3 monomers are involved in 4 short contacts:

Mol	Chain	Res	Type	Clashes	Symm-Clashes
6	B	504	TRS	1	0
3	A	502	PLP	2	0
3	B	502	PLP	1	0

5.7 Other polymers [i](#)

There are no such residues in this entry.

5.8 Polymer linkage issues [i](#)

There are no chain breaks in this entry.

6 Fit of model and data [i](#)

6.1 Protein, DNA and RNA chains [i](#)

In the following table, the column labelled ‘#RSRZ> 2’ contains the number (and percentage) of RSRZ outliers, followed by percent RSRZ outliers for the chain as percentile scores relative to all X-ray entries and entries of similar resolution. The OWAB column contains the minimum, median, 95th percentile and maximum values of the occupancy-weighted average B-factor per residue. The column labelled ‘Q< 0.9’ lists the number of (and percentage) of residues with an average occupancy less than 0.9.

Mol	Chain	Analysed	<RSRZ>	#RSRZ>2	OWAB(Å ²)	Q<0.9
1	A	479/491 (97%)	-0.32	5 (1%) 82 80	13, 22, 40, 76	0
1	B	480/491 (97%)	-0.26	10 (2%) 63 59	14, 23, 48, 83	0
All	All	959/982 (97%)	-0.29	15 (1%) 72 68	13, 22, 42, 83	0

All (15) RSRZ outliers are listed below:

Mol	Chain	Res	Type	RSRZ
1	B	30	GLY	4.9
1	B	32	PHE	3.7
1	B	36	LYS	3.5
1	B	5	THR	3.5
1	A	49	LEU	2.9
1	B	37	GLN	2.7
1	A	30	GLY	2.7
1	B	262	ALA	2.6
1	B	35	TYR	2.6
1	B	49	LEU	2.5
1	A	329	VAL	2.5
1	A	29	LYS	2.5
1	B	39	GLY	2.4
1	B	38	PRO	2.3
1	A	38	PRO	2.1

6.2 Non-standard residues in protein, DNA, RNA chains [i](#)

There are no non-standard protein/DNA/RNA residues in this entry.

6.3 Carbohydrates [i](#)

There are no carbohydrates in this entry.

6.4 Ligands [i](#)

In the following table, the Atoms column lists the number of modelled atoms in the group and the number defined in the chemical component dictionary. The B-factors column lists the minimum, median, 95th percentile and maximum values of B factors of atoms in the group. The column labelled 'Q<0.9' lists the number of atoms with occupancy less than 0.9.

Mol	Type	Chain	Res	Atoms	RSCC	RSR	B-factors(Å ²)	Q<0.9
4	PHE	B	503	12/12	0.58	0.26	57,63,79,92	0
4	PHE	A	503	12/12	0.68	0.27	62,75,85,95	0
6	TRS	B	504	8/8	0.83	0.22	42,46,48,49	0
2	BTB	B	501	14/14	0.93	0.10	20,23,31,35	0
2	BTB	A	501	14/14	0.94	0.09	18,19,22,27	0
5	CL	B	505	1/1	0.97	0.07	28,28,28,28	0
3	PLP	B	502	15/16	0.98	0.10	18,23,26,29	0
5	CL	B	506	1/1	0.98	0.05	28,28,28,28	0
3	PLP	A	502	15/16	0.98	0.10	18,21,25,30	0
5	CL	A	504	1/1	0.99	0.04	25,25,25,25	0
5	CL	A	505	1/1	1.00	0.06	24,24,24,24	0

6.5 Other polymers [i](#)

There are no such residues in this entry.