



# Full wwPDB X-ray Structure Validation Report ⓘ

Aug 20, 2023 – 05:49 AM EDT

PDB ID : 2HMF  
Title : Structure of a Threonine Sensitive Aspartokinase from *Methanococcus jannaschii* Complexed with Mg-ADP and Aspartate  
Authors : Faehnle, C.R.; Viola, R.E.  
Deposited on : 2006-07-11  
Resolution : 2.70 Å(reported)

This is a Full wwPDB X-ray Structure Validation Report for a publicly released PDB entry.

We welcome your comments at [validation@mail.wwpdb.org](mailto:validation@mail.wwpdb.org)

A user guide is available at

<https://www.wwpdb.org/validation/2017/XrayValidationReportHelp>

with specific help available everywhere you see the ⓘ symbol.

The types of validation reports are described at

<http://www.wwpdb.org/validation/2017/FAQs#types>.

---

The following versions of software and data (see [references ⓘ](#)) were used in the production of this report:

MolProbity : 4.02b-467  
Mogul : 1.8.5 (274361), CSD as541be (2020)  
Xtriage (Phenix) : 1.13  
EDS : 2.35  
buster-report : 1.1.7 (2018)  
Percentile statistics : 20191225.v01 (using entries in the PDB archive December 25th 2019)  
Refmac : 5.8.0158  
CCP4 : 7.0.044 (Gargrove)  
Ideal geometry (proteins) : Engh & Huber (2001)  
Ideal geometry (DNA, RNA) : Parkinson et al. (1996)  
Validation Pipeline (wwPDB-VP) : 2.35

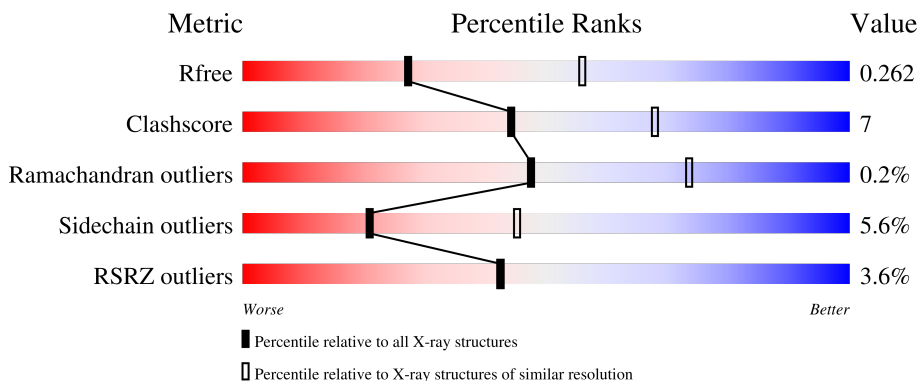
# 1 Overall quality at a glance

The following experimental techniques were used to determine the structure:

*X-RAY DIFFRACTION*

The reported resolution of this entry is 2.70 Å.

Percentile scores (ranging between 0-100) for global validation metrics of the entry are shown in the following graphic. The table shows the number of entries on which the scores are based.



Metric	Whole archive (#Entries)	Similar resolution (#Entries, resolution range(Å))
$R_{free}$	130704	2808 (2.70-2.70)
Clashscore	141614	3122 (2.70-2.70)
Ramachandran outliers	138981	3069 (2.70-2.70)
Sidechain outliers	138945	3069 (2.70-2.70)
RSRZ outliers	127900	2737 (2.70-2.70)

The table below summarises the geometric issues observed across the polymeric chains and their fit to the electron density. The red, orange, yellow and green segments of the lower bar indicate the fraction of residues that contain outliers for  $\geq 3$ , 2, 1 and 0 types of geometric quality criteria respectively. A grey segment represents the fraction of residues that are not modelled. The numeric value for each fraction is indicated below the corresponding segment, with a dot representing fractions  $\leq 5\%$ . The upper red bar (where present) indicates the fraction of residues that have poor fit to the electron density. The numeric value is given above the bar.

Mol	Chain	Length	Quality of chain
1	A	469	
1	B	469	
1	C	469	
1	D	469	

## 2 Entry composition [i](#)

There are 5 unique types of molecules in this entry. The entry contains 14431 atoms, of which 0 are hydrogens and 0 are deuteriums.

In the tables below, the ZeroOcc column contains the number of atoms modelled with zero occupancy, the AltConf column contains the number of residues with at least one atom in alternate conformation and the Trace column contains the number of residues modelled with at most 2 atoms.

- Molecule 1 is a protein called Probable aspartokinase.

Mol	Chain	Residues	Atoms					ZeroOcc	AltConf	Trace
			Total	C	N	O	S			
1	A	464	3540	2243	595	691	11	0	0	0
1	B	464	3540	2243	595	691	11	0	0	0
1	C	464	3540	2243	595	691	11	0	0	0
1	D	464	3540	2243	595	691	11	0	0	0

- Molecule 2 is MAGNESIUM ION (three-letter code: MG) (formula: Mg).

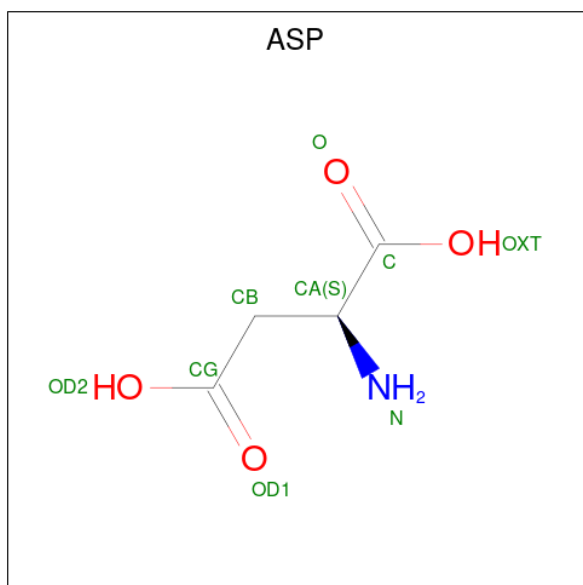
Mol	Chain	Residues	Atoms		ZeroOcc	AltConf
2	A	1	Total	Mg	0	0
			1	1		
2	B	1	Total	Mg	0	0
			1	1		
2	C	1	Total	Mg	0	0
			1	1		
2	D	1	Total	Mg	0	0
			1	1		

- Molecule 3 is ADENOSINE-5'-DIPHOSPHATE (three-letter code: ADP) (formula: C<sub>10</sub>H<sub>15</sub>N<sub>5</sub>O<sub>10</sub>P<sub>2</sub>).



Mol	Chain	Residues	Atoms					ZeroOcc	AltConf
			Total	C	N	O	P		
3	A	1	Total	C	N	O	P	0	0
			27	10	5	10	2		
3	B	1	Total	C	N	O	P	0	0
			27	10	5	10	2		
3	C	1	Total	C	N	O	P	0	0
			27	10	5	10	2		
3	D	1	Total	C	N	O	P	0	0
			27	10	5	10	2		

- Molecule 4 is ASPARTIC ACID (three-letter code: ASP) (formula: C<sub>4</sub>H<sub>7</sub>NO<sub>4</sub>).



Mol	Chain	Residues	Atoms				ZeroOcc	AltConf
4	A	1	Total	C	N	O	0	0
			9	4	1	4		
4	B	1	Total	C	N	O	0	0
			9	4	1	4		
4	C	1	Total	C	N	O	0	0
			9	4	1	4		
4	D	1	Total	C	N	O	0	0
			9	4	1	4		

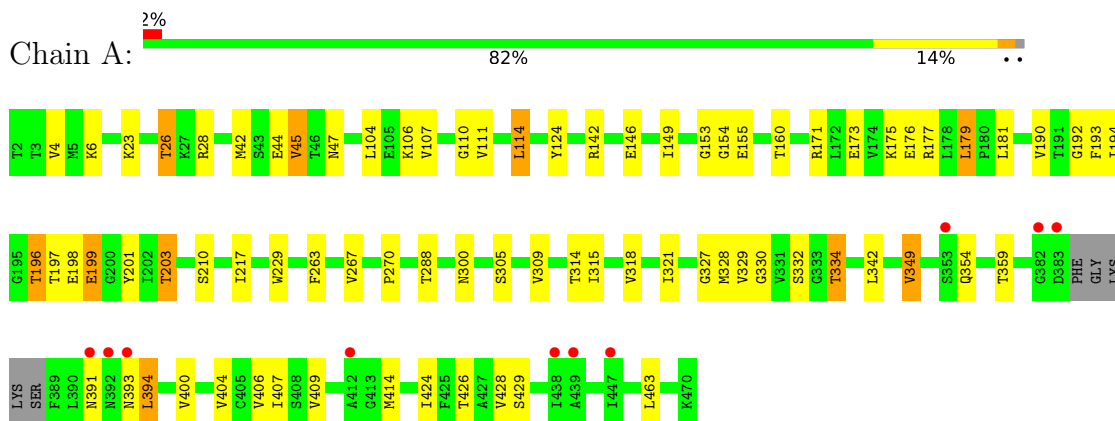
- Molecule 5 is water.

Mol	Chain	Residues	Atoms		ZeroOcc	AltConf
5	A	32	Total	O	0	0
			32	32		
5	B	33	Total	O	0	0
			33	33		
5	C	20	Total	O	0	0
			20	20		
5	D	38	Total	O	0	0
			38	38		

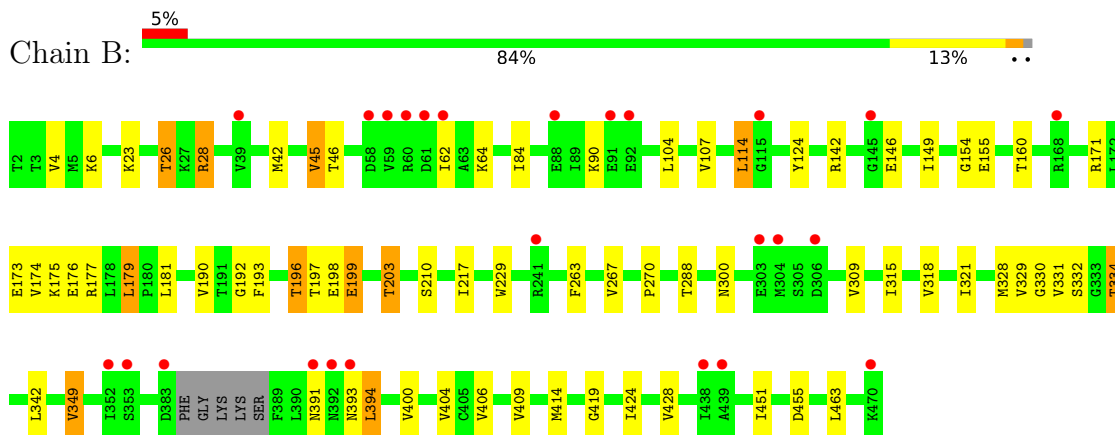
### 3 Residue-property plots [i](#)

These plots are drawn for all protein, RNA, DNA and oligosaccharide chains in the entry. The first graphic for a chain summarises the proportions of the various outlier classes displayed in the second graphic. The second graphic shows the sequence view annotated by issues in geometry and electron density. Residues are color-coded according to the number of geometric quality criteria for which they contain at least one outlier: green = 0, yellow = 1, orange = 2 and red = 3 or more. A red dot above a residue indicates a poor fit to the electron density ( $RSRZ > 2$ ). Stretches of 2 or more consecutive residues without any outlier are shown as a green connector. Residues present in the sample, but not in the model, are shown in grey.

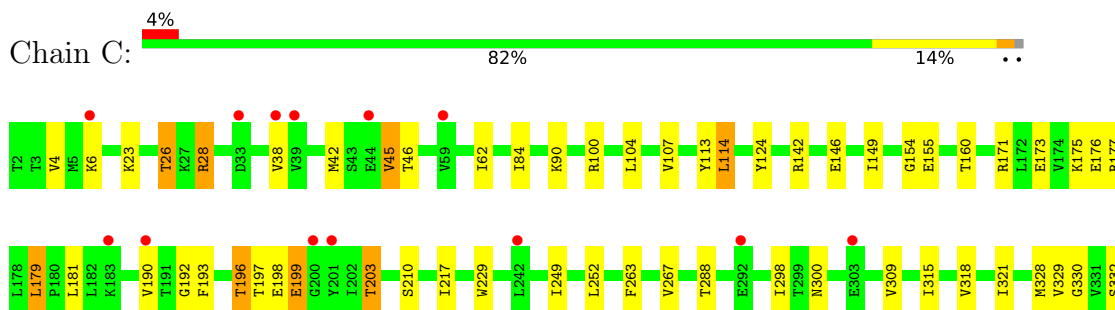
- Molecule 1: Probable aspartokinase

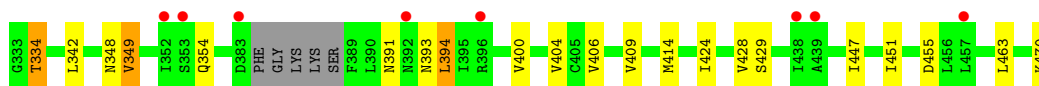


- Molecule 1: Probable aspartokinase

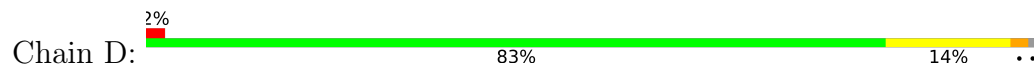


- Molecule 1: Probable aspartokinase





- Molecule 1: Probable aspartokinase



## 4 Data and refinement statistics i

Property	Value	Source
Space group	P 21 21 21	Depositor
Cell constants a, b, c, $\alpha$ , $\beta$ , $\gamma$	101.74Å 104.51Å 192.92Å 90.00° 90.00° 90.00°	Depositor
Resolution (Å)	50.00 – 2.70 29.69 – 2.70	Depositor EDS
% Data completeness (in resolution range)	94.1 (50.00-2.70) 94.2 (29.69-2.70)	Depositor EDS
$R_{merge}$	0.05	Depositor
$R_{sym}$	(Not available)	Depositor
$\langle I/\sigma(I) \rangle$ <sup>1</sup>	2.91 (at 2.68Å)	Xtrriage
Refinement program	REFMAC	Depositor
R, $R_{free}$	0.241 , 0.276 0.233 , 0.262	Depositor DCC
$R_{free}$ test set	2727 reflections (5.06%)	wwPDB-VP
Wilson B-factor (Å <sup>2</sup> )	53.4	Xtrriage
Anisotropy	0.090	Xtrriage
Bulk solvent $k_{sol}$ (e/Å <sup>3</sup> ), $B_{sol}$ (Å <sup>2</sup> )	0.33 , 34.1	EDS
L-test for twinning <sup>2</sup>	$\langle  L  \rangle = 0.48$ , $\langle L^2 \rangle = 0.31$	Xtrriage
Estimated twinning fraction	0.018 for k,h,-l	Xtrriage
$F_o, F_c$ correlation	0.92	EDS
Total number of atoms	14431	wwPDB-VP
Average B, all atoms (Å <sup>2</sup> )	47.0	wwPDB-VP

Xtrriage's analysis on translational NCS is as follows: *The largest off-origin peak in the Patterson function is 9.28% of the height of the origin peak. No significant pseudotranslation is detected.*

<sup>1</sup>Intensities estimated from amplitudes.

<sup>2</sup>Theoretical values of  $\langle |L| \rangle$ ,  $\langle L^2 \rangle$  for acentric reflections are 0.5, 0.333 respectively for untwinned datasets, and 0.375, 0.2 for perfectly twinned datasets.



## 5 Model quality [i](#)

### 5.1 Standard geometry [i](#)

Bond lengths and bond angles in the following residue types are not validated in this section: ADP, MG

The Z score for a bond length (or angle) is the number of standard deviations the observed value is removed from the expected value. A bond length (or angle) with  $|Z| > 5$  is considered an outlier worth inspection. RMSZ is the root-mean-square of all Z scores of the bond lengths (or angles).

Mol	Chain	Bond lengths		Bond angles	
		RMSZ	# Z  >5	RMSZ	# Z  >5
1	A	0.44	0/3579	0.57	0/4820
1	B	0.46	0/3579	0.58	0/4820
1	C	0.44	0/3579	0.58	0/4820
1	D	0.43	0/3579	0.58	0/4820
All	All	0.44	0/14316	0.58	0/19280

There are no bond length outliers.

There are no bond angle outliers.

There are no chirality outliers.

There are no planarity outliers.

### 5.2 Too-close contacts [i](#)

In the following table, the Non-H and H(model) columns list the number of non-hydrogen atoms and hydrogen atoms in the chain respectively. The H(added) column lists the number of hydrogen atoms added and optimized by MolProbity. The Clashes column lists the number of clashes within the asymmetric unit, whereas Symm-Clashes lists symmetry-related clashes.

Mol	Chain	Non-H	H(model)	H(added)	Clashes	Symm-Clashes
1	A	3540	0	3668	53	0
1	B	3540	0	3668	45	0
1	C	3540	0	3668	58	0
1	D	3540	0	3668	52	0
2	A	1	0	0	0	0
2	B	1	0	0	0	0
2	C	1	0	0	0	0
2	D	1	0	0	0	0
3	A	27	0	12	1	0

*Continued on next page...*

Continued from previous page...

Mol	Chain	Non-H	H(model)	H(added)	Clashes	Symm-Clashes
3	B	27	0	12	0	0
3	C	27	0	12	1	0
3	D	27	0	12	1	0
4	A	9	0	3	0	0
4	B	9	0	3	1	0
4	C	9	0	3	2	0
4	D	9	0	3	1	0
5	A	32	0	0	5	0
5	B	33	0	0	3	0
5	C	20	0	0	2	0
5	D	38	0	0	7	0
All	All	14431	0	14732	192	0

The all-atom clashscore is defined as the number of clashes found per 1000 atoms (including hydrogen atoms). The all-atom clashscore for this structure is 7.

All (192) close contacts within the same asymmetric unit are listed below, sorted by their clash magnitude.

Atom-1	Atom-2	Interatomic distance (Å)	Clash overlap (Å)
1:B:114:LEU:HD13	1:D:110:GLY:HA3	1.59	0.84
1:B:46:THR:HG1	4:B:501:ASP:N	1.76	0.82
1:A:44:GLU:HG3	5:A:531:HOH:O	1.79	0.82
1:D:229:TRP:HB3	1:D:288:THR:HG22	1.63	0.80
1:B:229:TRP:HB3	1:B:288:THR:HG22	1.63	0.80
1:A:110:GLY:HA3	1:C:114:LEU:HD13	1.63	0.78
1:A:229:TRP:HB3	1:A:288:THR:HG22	1.64	0.78
1:D:44:GLU:HG3	5:D:542:HOH:O	1.84	0.78
1:A:414:MET:HE1	1:A:424:ILE:HD11	1.66	0.77
1:C:330:GLY:O	1:C:334:THR:HG23	1.85	0.77
1:D:414:MET:HE1	1:D:424:ILE:HD11	1.67	0.77
1:D:414:MET:CE	1:D:424:ILE:HD11	2.15	0.76
1:A:309:VAL:HG13	1:A:409:VAL:HG13	1.68	0.76
1:C:229:TRP:HB3	1:C:288:THR:HG22	1.68	0.75
1:C:414:MET:CE	1:C:424:ILE:HD11	2.18	0.74
1:B:414:MET:CE	1:B:424:ILE:HD11	2.19	0.73
1:A:414:MET:CE	1:A:424:ILE:HD11	2.21	0.70
1:B:309:VAL:HG13	1:B:409:VAL:HG13	1.74	0.70
1:B:414:MET:HE1	1:B:424:ILE:HD11	1.72	0.69
1:A:318:VAL:HG21	1:A:406:VAL:HG23	1.74	0.69
1:C:309:VAL:HG13	1:C:409:VAL:HG13	1.75	0.69
1:C:414:MET:HE1	1:C:424:ILE:HD11	1.73	0.69

Continued on next page...

*Continued from previous page...*

Atom-1	Atom-2	Interatomic distance (Å)	Clash overlap (Å)
1:D:330:GLY:O	1:D:334:THR:HG23	1.93	0.69
1:A:349:VAL:CG1	1:B:332:SER:HB3	2.24	0.68
1:D:309:VAL:HG13	1:D:409:VAL:HG13	1.76	0.68
1:A:330:GLY:O	1:A:334:THR:HG23	1.94	0.67
1:B:330:GLY:O	1:B:334:THR:HG23	1.93	0.67
1:B:318:VAL:HG21	1:B:406:VAL:HG23	1.76	0.67
1:D:318:VAL:HG21	1:D:406:VAL:HG23	1.78	0.66
1:C:318:VAL:HG21	1:C:406:VAL:HG23	1.76	0.66
1:D:160:THR:OG1	1:D:203:THR:HG21	1.96	0.65
1:B:28:ARG:HH11	1:B:28:ARG:HG2	1.62	0.64
1:D:142:ARG:HD2	5:D:529:HOH:O	1.97	0.64
1:A:114:LEU:HD23	5:A:516:HOH:O	1.98	0.64
1:D:154:GLY:HA3	1:D:196:THR:HB	1.80	0.63
1:A:154:GLY:HA3	1:A:196:THR:HB	1.80	0.62
1:A:107:VAL:O	1:C:114:LEU:HD11	2.00	0.62
1:A:107:VAL:O	1:C:114:LEU:CD1	2.48	0.62
1:B:6:LYS:HE3	1:B:210:SER:HB3	1.82	0.62
1:B:154:GLY:HA3	1:B:196:THR:HB	1.81	0.62
1:A:160:THR:OG1	1:A:203:THR:HG21	2.00	0.61
1:D:28:ARG:HG2	1:D:28:ARG:HH11	1.65	0.61
1:A:6:LYS:HE3	1:A:210:SER:HB3	1.83	0.61
1:C:154:GLY:HA3	1:C:196:THR:HB	1.81	0.61
1:D:75:LYS:HE3	5:D:514:HOH:O	2.01	0.60
1:C:6:LYS:HE3	1:C:210:SER:HB3	1.84	0.60
1:C:28:ARG:HH11	1:C:28:ARG:HG2	1.67	0.59
1:C:46:THR:HG1	4:C:503:ASP:N	2.00	0.59
1:B:229:TRP:HB3	1:B:288:THR:CG2	2.32	0.59
1:D:470:LYS:HE2	5:D:520:HOH:O	2.02	0.59
1:D:107:VAL:HG21	1:D:124:TYR:HE2	1.68	0.59
1:B:160:THR:OG1	1:B:203:THR:HG21	2.03	0.58
1:A:107:VAL:HG21	1:A:124:TYR:CE2	2.38	0.58
1:D:197:THR:HG21	1:D:199:GLU:OE1	2.03	0.58
1:A:110:GLY:CA	1:C:114:LEU:HD13	2.33	0.58
1:A:197:THR:HG22	1:A:198:GLU:N	2.19	0.58
1:A:111:VAL:HG23	1:C:114:LEU:HD11	1.84	0.58
1:C:197:THR:HG22	1:C:198:GLU:N	2.19	0.58
1:A:107:VAL:HG21	1:A:124:TYR:HE2	1.69	0.57
1:C:429:SER:HB2	1:D:419:GLY:HA2	1.85	0.57
1:D:197:THR:HG22	1:D:198:GLU:N	2.19	0.57
1:C:349:VAL:CG1	1:D:332:SER:HB3	2.35	0.56
1:D:107:VAL:HG21	1:D:124:TYR:CE2	2.40	0.56

*Continued on next page...*

*Continued from previous page...*

Atom-1	Atom-2	Interatomic distance (Å)	Clash overlap (Å)
1:D:334:THR:HG22	1:D:394:LEU:HG	1.86	0.56
1:A:28:ARG:HG2	1:A:28:ARG:HH11	1.71	0.56
1:B:334:THR:HG22	1:B:394:LEU:HG	1.88	0.56
1:D:42:MET:O	1:D:45:VAL:HG13	2.07	0.54
1:B:28:ARG:HG2	1:B:28:ARG:NH1	2.23	0.54
1:C:160:THR:OG1	1:C:203:THR:HG21	2.07	0.54
1:C:348:ASN:HB2	5:C:522:HOH:O	2.06	0.54
1:B:321:ILE:HG12	1:B:400:VAL:HG12	1.89	0.54
1:D:321:ILE:HG12	1:D:400:VAL:HG12	1.89	0.54
1:B:107:VAL:HG21	1:B:124:TYR:CE2	2.42	0.54
1:C:210:SER:HB2	4:C:503:ASP:OD1	2.08	0.53
1:A:197:THR:HG21	1:A:199:GLU:OE1	2.09	0.53
1:D:329:VAL:HG23	1:D:334:THR:HG21	1.91	0.53
1:D:393:ASN:HB2	5:D:526:HOH:O	2.08	0.53
1:B:107:VAL:HG21	1:B:124:TYR:HE2	1.73	0.53
1:A:332:SER:HB3	1:B:349:VAL:CG1	2.39	0.52
3:A:472:ADP:O3B	3:A:472:ADP:O1A	2.27	0.52
1:A:354:GLN:NE2	5:A:506:HOH:O	2.37	0.52
1:C:197:THR:HG21	1:C:199:GLU:OE1	2.09	0.52
1:C:332:SER:HB3	1:D:349:VAL:CG1	2.39	0.52
1:D:28:ARG:HG2	1:D:28:ARG:NH1	2.24	0.52
1:C:321:ILE:HG12	1:C:400:VAL:HG12	1.92	0.52
1:D:229:TRP:HB3	1:D:288:THR:CG2	2.36	0.52
1:A:190:VAL:HG11	1:A:217:ILE:HD11	1.92	0.52
1:C:229:TRP:HB3	1:C:288:THR:CG2	2.39	0.51
1:A:42:MET:O	1:A:45:VAL:HG13	2.10	0.51
1:A:229:TRP:HB3	1:A:288:THR:CG2	2.38	0.51
1:C:107:VAL:HG21	1:C:124:TYR:CE2	2.45	0.51
1:C:329:VAL:HG23	1:C:334:THR:HG21	1.92	0.51
1:B:197:THR:HG22	1:B:198:GLU:N	2.26	0.51
1:C:424:ILE:O	1:C:428:VAL:HG23	2.09	0.51
1:A:321:ILE:HG12	1:A:400:VAL:HG12	1.92	0.50
1:A:334:THR:HG22	1:A:394:LEU:HG	1.92	0.50
1:D:6:LYS:HE3	1:D:210:SER:HB3	1.93	0.50
1:D:424:ILE:O	1:D:428:VAL:HG23	2.12	0.50
1:A:106:LYS:O	1:C:113:TYR:HB3	2.11	0.50
1:B:424:ILE:O	1:B:428:VAL:HG23	2.11	0.50
1:C:107:VAL:HG21	1:C:124:TYR:HE2	1.77	0.49
1:C:28:ARG:HG2	1:C:28:ARG:NH1	2.27	0.49
1:A:329:VAL:HG23	1:A:334:THR:HG21	1.95	0.49
1:D:190:VAL:HG11	1:D:217:ILE:HD11	1.94	0.49

*Continued on next page...*

*Continued from previous page...*

Atom-1	Atom-2	Interatomic distance (Å)	Clash overlap (Å)
1:A:424:ILE:O	1:A:428:VAL:HG23	2.13	0.49
1:D:348:ASN:HA	5:D:525:HOH:O	2.12	0.49
1:B:329:VAL:HG23	1:B:334:THR:HG21	1.95	0.49
1:B:263:PHE:HA	1:B:315:ILE:HD11	1.95	0.48
1:C:263:PHE:HA	1:C:315:ILE:HD11	1.96	0.48
1:A:429:SER:HB2	1:B:419:GLY:HA2	1.94	0.48
1:A:28:ARG:HG2	1:A:28:ARG:NH1	2.28	0.48
1:B:142:ARG:HA	1:B:146:GLU:O	2.14	0.48
1:C:190:VAL:HG11	1:C:217:ILE:HD11	1.96	0.48
1:B:197:THR:HG21	1:B:199:GLU:OE1	2.13	0.47
1:C:142:ARG:HA	1:C:146:GLU:O	2.15	0.47
1:C:334:THR:HG22	1:C:394:LEU:HG	1.97	0.47
1:C:42:MET:O	1:C:45:VAL:HG13	2.14	0.47
1:C:84:ILE:O	1:C:90:LYS:HE3	2.15	0.47
1:B:42:MET:O	1:B:45:VAL:HG13	2.13	0.47
1:D:84:ILE:O	1:D:90:LYS:HE3	2.16	0.46
1:A:107:VAL:HA	1:C:114:LEU:HD12	1.96	0.46
1:D:197:THR:CG2	1:D:199:GLU:OE1	2.63	0.46
1:A:142:ARG:HA	1:A:146:GLU:O	2.16	0.46
1:B:190:VAL:HG11	1:B:217:ILE:HD11	1.98	0.46
3:C:472:ADP:O1A	3:C:472:ADP:O3B	2.34	0.45
1:D:114:LEU:HD23	5:D:505:HOH:O	2.16	0.45
1:C:23:LYS:O	1:C:26:THR:HG22	2.16	0.45
1:D:142:ARG:HA	1:D:146:GLU:O	2.16	0.45
1:B:391:ASN:OD1	1:B:393:ASN:HB2	2.17	0.45
3:D:472:ADP:H2'	3:D:472:ADP:N3	2.31	0.45
1:C:328:MET:HB2	1:D:271:ARG:NH1	2.32	0.44
1:A:328:MET:HE1	1:B:270:PRO:HB3	1.99	0.44
1:B:171:ARG:NH1	1:B:173:GLU:OE2	2.45	0.44
1:C:249:ILE:HG21	1:C:252:LEU:HD13	2.00	0.44
1:A:197:THR:CG2	1:A:199:GLU:OE1	2.66	0.44
1:D:263:PHE:HA	1:D:315:ILE:HD11	2.00	0.44
1:A:391:ASN:OD1	1:A:393:ASN:HB2	2.18	0.44
1:C:6:LYS:HA	1:C:38:VAL:O	2.17	0.44
1:D:391:ASN:OD1	1:D:393:ASN:HB2	2.18	0.44
1:D:197:THR:CG2	1:D:198:GLU:N	2.81	0.43
1:C:197:THR:CG2	1:C:198:GLU:N	2.81	0.43
1:A:175:LYS:O	1:A:179:LEU:HB2	2.17	0.43
1:B:64:LYS:HB2	5:B:505:HOH:O	2.18	0.43
1:A:155:GLU:O	1:A:177:ARG:HD2	2.18	0.43
1:A:314:THR:HG22	1:A:407:ILE:HG13	2.01	0.43

*Continued on next page...*

*Continued from previous page...*

Atom-1	Atom-2	Interatomic distance (Å)	Clash overlap (Å)
1:B:114:LEU:HD13	1:D:110:GLY:CA	2.40	0.43
1:C:470:LYS:HB2	5:C:510:HOH:O	2.19	0.43
1:A:263:PHE:HA	1:A:315:ILE:HD11	2.01	0.43
1:C:391:ASN:OD1	1:C:393:ASN:HB2	2.19	0.43
1:A:426:THR:HG22	5:B:507:HOH:O	2.18	0.43
1:C:414:MET:CE	1:C:424:ILE:CD1	2.95	0.43
1:C:175:LYS:O	1:C:179:LEU:HB2	2.19	0.43
1:D:175:LYS:O	1:D:179:LEU:HB2	2.18	0.42
1:A:327:GLY:O	1:A:359:THR:OG1	2.29	0.42
1:B:149:ILE:HD11	1:B:181:LEU:HD21	2.01	0.42
1:D:46:THR:HG1	4:D:504:ASP:N	2.17	0.42
1:A:199:GLU:HG3	1:A:201:TYR:CE2	2.55	0.42
1:C:155:GLU:O	1:C:177:ARG:HD2	2.19	0.42
1:A:171:ARG:NH1	1:A:173:GLU:OE2	2.50	0.42
1:C:196:THR:HG23	1:C:197:THR:O	2.20	0.42
1:D:149:ILE:HD11	1:D:181:LEU:HD21	2.02	0.42
1:A:149:ILE:HD11	1:A:181:LEU:HD21	2.02	0.42
1:A:270:PRO:HB3	1:B:328:MET:HE1	2.02	0.42
1:C:149:ILE:HD11	1:C:181:LEU:HD21	2.01	0.42
1:C:414:MET:HE2	1:C:424:ILE:HD11	1.98	0.42
1:A:197:THR:CG2	1:A:198:GLU:N	2.83	0.41
1:B:451:ILE:HD12	1:B:455:ASP:HB2	2.02	0.41
1:C:100:ARG:HA	1:C:100:ARG:HD3	1.93	0.41
1:C:252:LEU:O	1:C:298:ILE:HA	2.20	0.41
1:D:6:LYS:HA	1:D:38:VAL:O	2.20	0.41
1:D:134:SER:OG	1:D:135:PRO:HD3	2.20	0.41
1:D:249:ILE:HG21	1:D:252:LEU:HD13	2.01	0.41
1:C:114:LEU:HD12	1:C:114:LEU:HA	1.86	0.41
1:C:414:MET:HE3	1:C:447:ILE:HD12	2.03	0.41
1:B:197:THR:CG2	1:B:199:GLU:OE1	2.69	0.41
1:B:84:ILE:O	1:B:90:LYS:HE3	2.20	0.41
1:A:47:ASN:HB3	5:A:525:HOH:O	2.21	0.41
1:C:171:ARG:NH1	1:C:173:GLU:OE2	2.47	0.41
1:B:174:VAL:N	5:B:515:HOH:O	2.52	0.41
1:C:429:SER:CB	1:D:419:GLY:HA2	2.51	0.41
1:C:451:ILE:HD12	1:C:455:ASP:HB2	2.03	0.41
1:D:364:VAL:HG11	1:D:406:VAL:HG21	2.03	0.41
1:D:414:MET:CE	1:D:424:ILE:CD1	2.93	0.41
1:B:175:LYS:O	1:B:179:LEU:HB2	2.21	0.40
1:A:153:GLY:HA3	1:A:194:ILE:O	2.21	0.40
5:A:517:HOH:O	1:B:331:VAL:HG13	2.21	0.40

*Continued on next page...*

Continued from previous page...

Atom-1	Atom-2	Interatomic distance (Å)	Clash overlap (Å)
1:B:155:GLU:O	1:B:177:ARG:HD2	2.21	0.40
1:B:414:MET:CE	1:B:424:ILE:CD1	2.96	0.40
1:D:171:ARG:NH1	1:D:173:GLU:OE2	2.49	0.40
1:B:23:LYS:O	1:B:26:THR:HG22	2.21	0.40
1:D:252:LEU:O	1:D:298:ILE:HA	2.20	0.40
1:A:23:LYS:O	1:A:26:THR:HG22	2.22	0.40

There are no symmetry-related clashes.

## 5.3 Torsion angles [i](#)

### 5.3.1 Protein backbone [i](#)

In the following table, the Percentiles column shows the percent Ramachandran outliers of the chain as a percentile score with respect to all X-ray entries followed by that with respect to entries of similar resolution.

The Analysed column shows the number of residues for which the backbone conformation was analysed, and the total number of residues.

Mol	Chain	Analysed	Favoured	Allowed	Outliers	Percentiles
1	A	460/469 (98%)	440 (96%)	19 (4%)	1 (0%)	47 73
1	B	460/469 (98%)	442 (96%)	17 (4%)	1 (0%)	47 73
1	C	460/469 (98%)	443 (96%)	16 (4%)	1 (0%)	47 73
1	D	460/469 (98%)	442 (96%)	17 (4%)	1 (0%)	47 73
All	All	1840/1876 (98%)	1767 (96%)	69 (4%)	4 (0%)	47 73

All (4) Ramachandran outliers are listed below:

Mol	Chain	Res	Type
1	A	192	GLY
1	B	192	GLY
1	C	192	GLY
1	D	192	GLY

### 5.3.2 Protein sidechains [i](#)

In the following table, the Percentiles column shows the percent sidechain outliers of the chain as a percentile score with respect to all X-ray entries followed by that with respect to entries of similar

resolution.

The Analysed column shows the number of residues for which the sidechain conformation was analysed, and the total number of residues.

Mol	Chain	Analysed	Rotameric	Outliers	Percentiles	
1	A	389/393 (99%)	369 (95%)	20 (5%)	24	50
1	B	389/393 (99%)	368 (95%)	21 (5%)	22	47
1	C	389/393 (99%)	367 (94%)	22 (6%)	20	44
1	D	389/393 (99%)	366 (94%)	23 (6%)	19	43
All	All	1556/1572 (99%)	1470 (94%)	86 (6%)	21	46

All (86) residues with a non-rotameric sidechain are listed below:

Mol	Chain	Res	Type
1	A	4	VAL
1	A	26	THR
1	A	45	VAL
1	A	104	LEU
1	A	114	LEU
1	A	176	GLU
1	A	179	LEU
1	A	193	PHE
1	A	196	THR
1	A	199	GLU
1	A	203	THR
1	A	267	VAL
1	A	300	ASN
1	A	305	SER
1	A	334	THR
1	A	342	LEU
1	A	349	VAL
1	A	394	LEU
1	A	404	VAL
1	A	463	LEU
1	B	4	VAL
1	B	26	THR
1	B	28	ARG
1	B	45	VAL
1	B	62	ILE
1	B	104	LEU
1	B	114	LEU
1	B	176	GLU

*Continued on next page...*



*Continued from previous page...*

<b>Mol</b>	<b>Chain</b>	<b>Res</b>	<b>Type</b>
1	B	179	LEU
1	B	193	PHE
1	B	196	THR
1	B	199	GLU
1	B	203	THR
1	B	267	VAL
1	B	300	ASN
1	B	334	THR
1	B	342	LEU
1	B	349	VAL
1	B	394	LEU
1	B	404	VAL
1	B	463	LEU
1	C	4	VAL
1	C	26	THR
1	C	28	ARG
1	C	45	VAL
1	C	62	ILE
1	C	104	LEU
1	C	114	LEU
1	C	176	GLU
1	C	179	LEU
1	C	193	PHE
1	C	196	THR
1	C	199	GLU
1	C	203	THR
1	C	267	VAL
1	C	300	ASN
1	C	334	THR
1	C	342	LEU
1	C	349	VAL
1	C	354	GLN
1	C	394	LEU
1	C	404	VAL
1	C	463	LEU
1	D	4	VAL
1	D	26	THR
1	D	28	ARG
1	D	45	VAL
1	D	62	ILE
1	D	104	LEU
1	D	114	LEU

*Continued on next page...*

*Continued from previous page...*

Mol	Chain	Res	Type
1	D	176	GLU
1	D	179	LEU
1	D	193	PHE
1	D	196	THR
1	D	199	GLU
1	D	203	THR
1	D	267	VAL
1	D	300	ASN
1	D	305	SER
1	D	334	THR
1	D	342	LEU
1	D	349	VAL
1	D	389	PHE
1	D	394	LEU
1	D	404	VAL
1	D	463	LEU

Sometimes sidechains can be flipped to improve hydrogen bonding and reduce clashes. All (3) such sidechains are listed below:

Mol	Chain	Res	Type
1	A	354	GLN
1	B	354	GLN
1	D	348	ASN

### 5.3.3 RNA [i](#)

There are no RNA molecules in this entry.

### 5.4 Non-standard residues in protein, DNA, RNA chains [i](#)

There are no non-standard protein/DNA/RNA residues in this entry.

### 5.5 Carbohydrates [i](#)

There are no monosaccharides in this entry.

### 5.6 Ligand geometry [i](#)

Of 12 ligands modelled in this entry, 4 are monoatomic - leaving 8 for Mogul analysis.

In the following table, the Counts columns list the number of bonds (or angles) for which Mogul statistics could be retrieved, the number of bonds (or angles) that are observed in the model and the number of bonds (or angles) that are defined in the Chemical Component Dictionary. The Link column lists molecule types, if any, to which the group is linked. The Z score for a bond length (or angle) is the number of standard deviations the observed value is removed from the expected value. A bond length (or angle) with  $|Z| > 2$  is considered an outlier worth inspection. RMSZ is the root-mean-square of all Z scores of the bond lengths (or angles).

Mol	Type	Chain	Res	Link	Bond lengths			Bond angles		
					Counts	RMSZ	# Z  > 2	Counts	RMSZ	# Z  > 2
3	ADP	A	472	2	24,29,29	1.09	2 (8%)	29,45,45	1.37	4 (13%)
3	ADP	B	472	2	24,29,29	0.96	2 (8%)	29,45,45	1.29	3 (10%)
4	ASP	C	503	-	6,8,8	1.25	0	8,10,10	1.13	1 (12%)
4	ASP	D	504	-	6,8,8	1.32	0	8,10,10	1.01	0
4	ASP	B	501	-	6,8,8	1.07	0	8,10,10	1.26	1 (12%)
3	ADP	C	472	2	24,29,29	1.01	2 (8%)	29,45,45	1.31	4 (13%)
4	ASP	A	502	-	6,8,8	1.24	0	8,10,10	1.12	0
3	ADP	D	472	2	24,29,29	0.87	1 (4%)	29,45,45	1.47	6 (20%)

In the following table, the Chirals column lists the number of chiral outliers, the number of chiral centers analysed, the number of these observed in the model and the number defined in the Chemical Component Dictionary. Similar counts are reported in the Torsion and Rings columns. '-' means no outliers of that kind were identified.

Mol	Type	Chain	Res	Link	Chirals	Torsions	Rings
3	ADP	A	472	2	-	3/12/32/32	0/3/3/3
3	ADP	B	472	2	-	4/12/32/32	0/3/3/3
4	ASP	C	503	-	-	0/8/8/8	-
4	ASP	D	504	-	-	1/8/8/8	-
4	ASP	B	501	-	-	2/8/8/8	-
3	ADP	C	472	2	-	5/12/32/32	0/3/3/3
4	ASP	A	502	-	-	5/8/8/8	-
3	ADP	D	472	2	-	4/12/32/32	0/3/3/3

All (7) bond length outliers are listed below:

Mol	Chain	Res	Type	Atoms	Z	Observed(Å)	Ideal(Å)
3	A	472	ADP	C5-C4	2.81	1.48	1.40
3	B	472	ADP	C5-C4	2.74	1.48	1.40
3	C	472	ADP	C5-C4	2.48	1.47	1.40
3	A	472	ADP	C2-N3	2.27	1.35	1.32
3	D	472	ADP	C5-C4	2.24	1.46	1.40

Continued on next page...

*Continued from previous page...*

Mol	Chain	Res	Type	Atoms	Z	Observed(Å)	Ideal(Å)
3	C	472	ADP	C2-N3	2.04	1.35	1.32
3	B	472	ADP	C2-N3	2.03	1.35	1.32

All (19) bond angle outliers are listed below:

Mol	Chain	Res	Type	Atoms	Z	Observed(°)	Ideal(°)
3	C	472	ADP	N3-C2-N1	-4.09	122.28	128.68
3	D	472	ADP	N3-C2-N1	-4.00	122.43	128.68
3	B	472	ADP	N3-C2-N1	-3.50	123.21	128.68
3	A	472	ADP	N3-C2-N1	-3.17	123.72	128.68
3	A	472	ADP	PA-O3A-PB	-3.16	121.98	132.83
3	D	472	ADP	C3'-C2'-C1'	2.96	105.43	100.98
3	D	472	ADP	C4-C5-N7	-2.82	106.46	109.40
3	C	472	ADP	C3'-C2'-C1'	2.64	104.95	100.98
3	B	472	ADP	C3'-C2'-C1'	2.57	104.85	100.98
3	A	472	ADP	C3'-C2'-C1'	2.56	104.83	100.98
3	A	472	ADP	C4-C5-N7	-2.47	106.82	109.40
3	D	472	ADP	PA-O3A-PB	-2.42	124.51	132.83
4	B	501	ASP	OD1-CG-CB	-2.30	115.43	122.80
3	B	472	ADP	O3B-PB-O2B	2.22	116.12	107.64
3	D	472	ADP	C2-N1-C6	2.18	122.48	118.75
3	D	472	ADP	O3B-PB-O2B	2.18	115.95	107.64
3	C	472	ADP	PA-O3A-PB	-2.13	125.52	132.83
4	C	503	ASP	OD1-CG-CB	-2.11	116.04	122.80
3	C	472	ADP	C2-N1-C6	2.01	122.19	118.75

There are no chirality outliers.

All (24) torsion outliers are listed below:

Mol	Chain	Res	Type	Atoms
3	A	472	ADP	PA-O3A-PB-O3B
3	B	472	ADP	PA-O3A-PB-O3B
3	C	472	ADP	PA-O3A-PB-O3B
3	D	472	ADP	PA-O3A-PB-O3B
4	A	502	ASP	C-CA-CB-CG
4	B	501	ASP	CA-CB-CG-OD1
4	B	501	ASP	CA-CB-CG-OD2
4	A	502	ASP	N-CA-CB-CG
4	A	502	ASP	OXT-C-CA-N
3	A	472	ADP	C4'-C5'-O5'-PA
3	D	472	ADP	C4'-C5'-O5'-PA
4	A	502	ASP	O-C-CA-N

*Continued on next page...*

*Continued from previous page...*

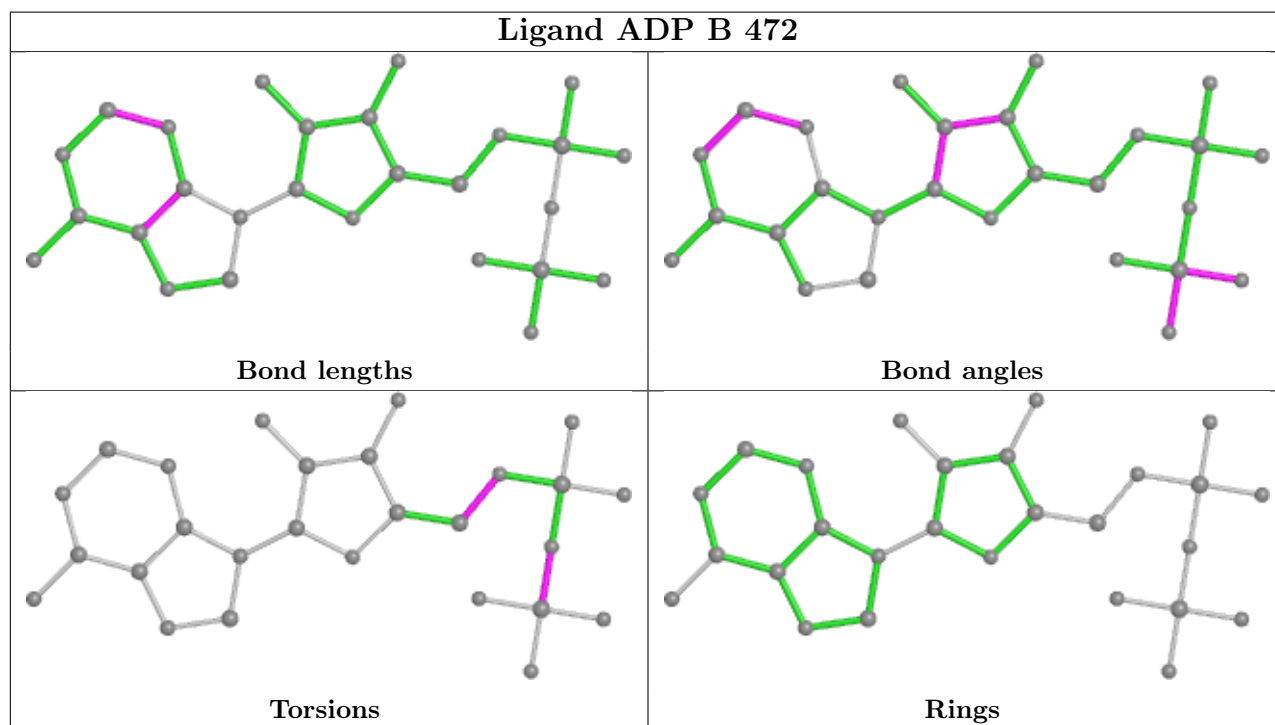
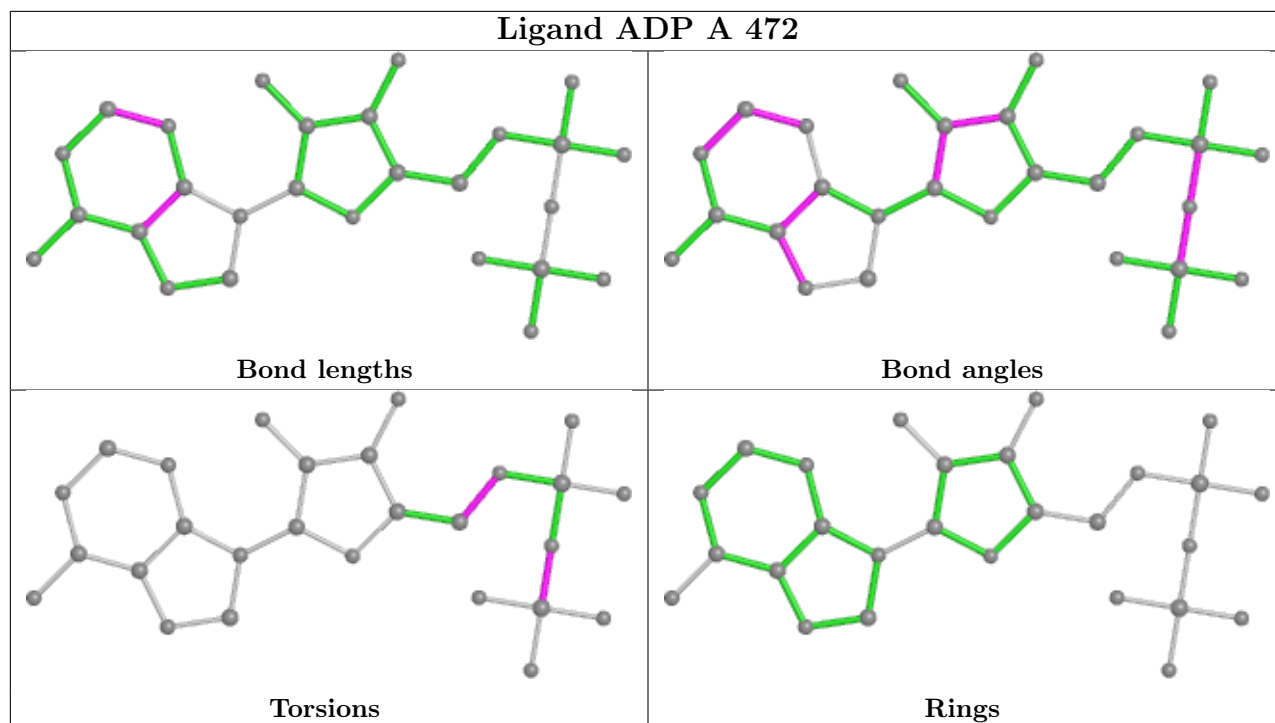
Mol	Chain	Res	Type	Atoms
3	C	472	ADP	C4'-C5'-O5'-PA
3	B	472	ADP	C4'-C5'-O5'-PA
3	C	472	ADP	PB-O3A-PA-O1A
3	B	472	ADP	PA-O3A-PB-O1B
3	C	472	ADP	PA-O3A-PB-O1B
3	D	472	ADP	PA-O3A-PB-O1B
3	A	472	ADP	PA-O3A-PB-O2B
3	B	472	ADP	PA-O3A-PB-O2B
3	D	472	ADP	PA-O3A-PB-O2B
4	D	504	ASP	CA-CB-CG-OD2
3	C	472	ADP	PB-O3A-PA-O2A
4	A	502	ASP	CA-CB-CG-OD2

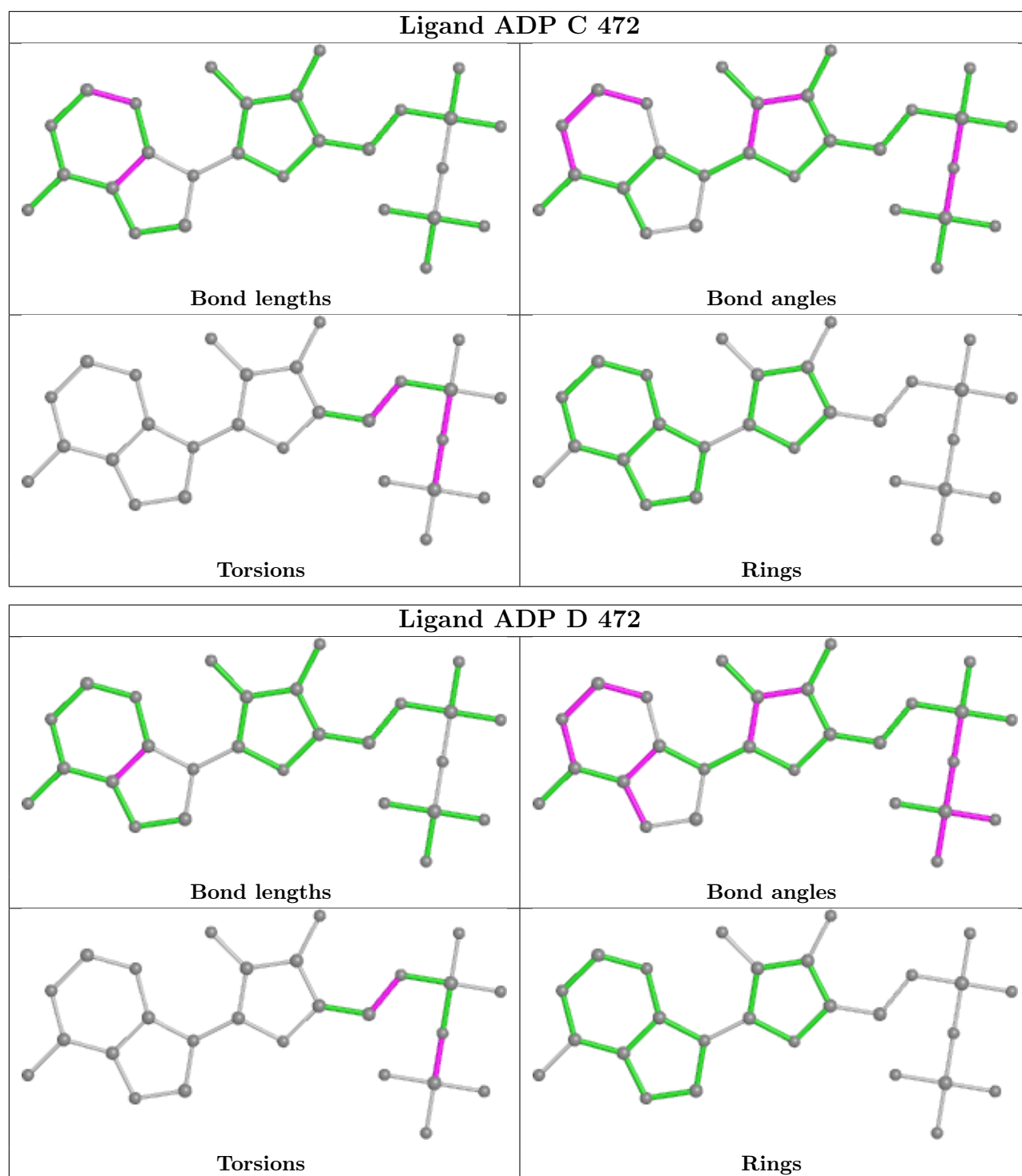
There are no ring outliers.

6 monomers are involved in 7 short contacts:

Mol	Chain	Res	Type	Clashes	Symm-Clashes
3	A	472	ADP	1	0
4	C	503	ASP	2	0
4	D	504	ASP	1	0
4	B	501	ASP	1	0
3	C	472	ADP	1	0
3	D	472	ADP	1	0

The following is a two-dimensional graphical depiction of Mogul quality analysis of bond lengths, bond angles, torsion angles, and ring geometry for all instances of the Ligand of Interest. In addition, ligands with molecular weight > 250 and outliers as shown on the validation Tables will also be included. For torsion angles, if less than 5% of the Mogul distribution of torsion angles is within 10 degrees of the torsion angle in question, then that torsion angle is considered an outlier. Any bond that is central to one or more torsion angles identified as an outlier by Mogul will be highlighted in the graph. For rings, the root-mean-square deviation (RMSD) between the ring in question and similar rings identified by Mogul is calculated over all ring torsion angles. If the average RMSD is greater than 60 degrees and the minimal RMSD between the ring in question and any Mogul-identified rings is also greater than 60 degrees, then that ring is considered an outlier. The outliers are highlighted in purple. The color gray indicates Mogul did not find sufficient equivalents in the CSD to analyse the geometry.





## 5.7 Other polymers [\(i\)](#)

There are no such residues in this entry.

## 5.8 Polymer linkage issues

There are no chain breaks in this entry.



## 6 Fit of model and data

### 6.1 Protein, DNA and RNA chains

In the following table, the column labelled ‘#RSRZ > 2’ contains the number (and percentage) of RSRZ outliers, followed by percent RSRZ outliers for the chain as percentile scores relative to all X-ray entries and entries of similar resolution. The OWAB column contains the minimum, median, 95<sup>th</sup> percentile and maximum values of the occupancy-weighted average B-factor per residue. The column labelled ‘Q < 0.9’ lists the number of (and percentage) of residues with an average occupancy less than 0.9.

Mol	Chain	Analysed	<RSRZ>	#RSRZ>2	OWAB(Å <sup>2</sup> )	Q<0.9
1	A	464/469 (98%)	0.10	10 (2%) 62 63	31, 47, 61, 68	0
1	B	464/469 (98%)	0.27	25 (5%) 25 24	31, 47, 61, 68	0
1	C	464/469 (98%)	0.21	21 (4%) 33 31	31, 47, 61, 68	0
1	D	464/469 (98%)	0.11	10 (2%) 62 63	31, 47, 61, 68	0
All	All	1856/1876 (98%)	0.17	66 (3%) 42 42	31, 47, 61, 68	0

All (66) RSRZ outliers are listed below:

Mol	Chain	Res	Type	RSRZ
1	D	383	ASP	4.7
1	C	392	ASN	4.3
1	C	38	VAL	3.7
1	B	353	SER	3.4
1	C	383	ASP	3.3
1	A	383	ASP	3.3
1	B	59	VAL	3.3
1	C	292	GLU	3.3
1	B	392	ASN	3.2
1	B	58	ASP	3.1
1	C	39	VAL	3.1
1	C	242	LEU	3.1
1	C	439	ALA	3.1
1	A	438	ILE	3.1
1	B	470	LYS	3.0
1	B	438	ILE	3.0
1	B	60	ARG	3.0
1	A	353	SER	3.0
1	B	62	ILE	3.0
1	A	391	ASN	2.9
1	B	61	ASP	2.9

*Continued on next page...*

*Continued from previous page...*

<b>Mol</b>	<b>Chain</b>	<b>Res</b>	<b>Type</b>	<b>RSRZ</b>
1	C	200	GLY	2.9
1	D	353	SER	2.8
1	B	306	ASP	2.8
1	D	352	ILE	2.8
1	C	183	LYS	2.7
1	C	438	ILE	2.7
1	B	439	ALA	2.6
1	B	92	GLU	2.6
1	D	393	ASN	2.6
1	B	383	ASP	2.6
1	D	438	ILE	2.6
1	D	391	ASN	2.6
1	C	33	ASP	2.6
1	B	88	GLU	2.5
1	B	91	GLU	2.5
1	A	447	ILE	2.5
1	B	145	GLY	2.5
1	B	352	ILE	2.5
1	B	303	GLU	2.4
1	B	393	ASN	2.4
1	D	448	SER	2.3
1	C	352	ILE	2.3
1	C	396	ARG	2.3
1	C	353	SER	2.3
1	C	457	LEU	2.3
1	D	168	ARG	2.3
1	D	434	ASN	2.2
1	A	439	ALA	2.2
1	D	439	ALA	2.2
1	A	412	ALA	2.2
1	A	392	ASN	2.2
1	B	115	GLY	2.2
1	A	393	ASN	2.2
1	B	304	MET	2.2
1	C	44	GLU	2.2
1	B	168	ARG	2.2
1	C	6	LYS	2.1
1	A	382	GLY	2.1
1	B	39	VAL	2.1
1	C	201	TYR	2.1
1	C	303	GLU	2.1
1	B	391	ASN	2.1

*Continued on next page...*

Continued from previous page...

Mol	Chain	Res	Type	RSRZ
1	B	241	ARG	2.1
1	C	59	VAL	2.0
1	C	190	VAL	2.0

## 6.2 Non-standard residues in protein, DNA, RNA chains [i](#)

There are no non-standard protein/DNA/RNA residues in this entry.

## 6.3 Carbohydrates [i](#)

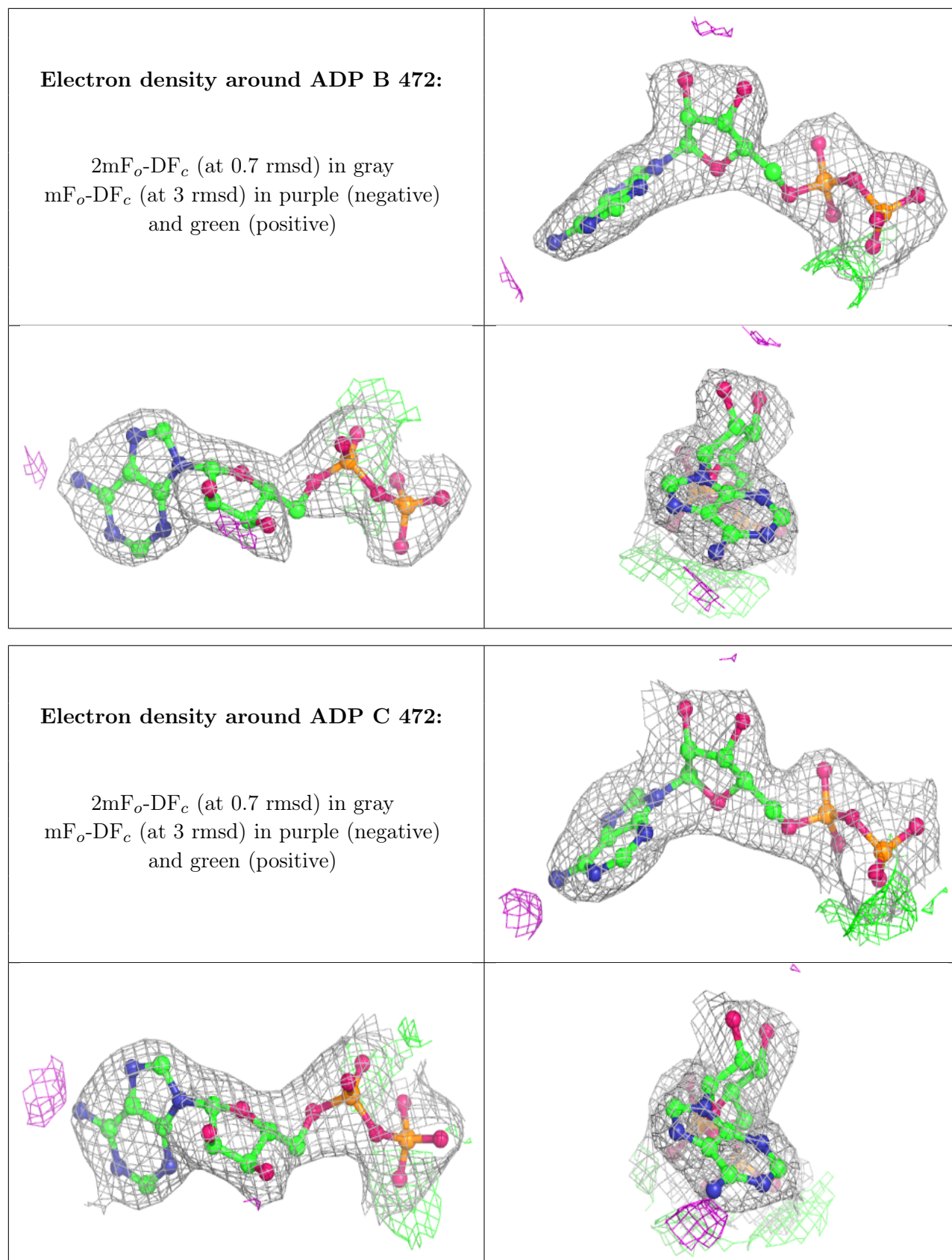
There are no monosaccharides in this entry.

## 6.4 Ligands [i](#)

In the following table, the Atoms column lists the number of modelled atoms in the group and the number defined in the chemical component dictionary. The B-factors column lists the minimum, median, 95<sup>th</sup> percentile and maximum values of B factors of atoms in the group. The column labelled 'Q< 0.9' lists the number of atoms with occupancy less than 0.9.

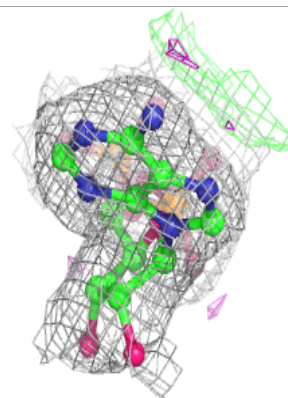
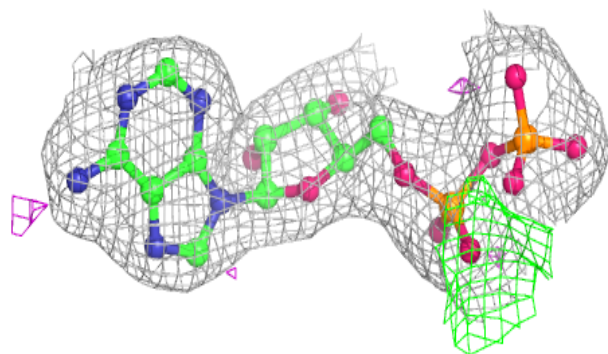
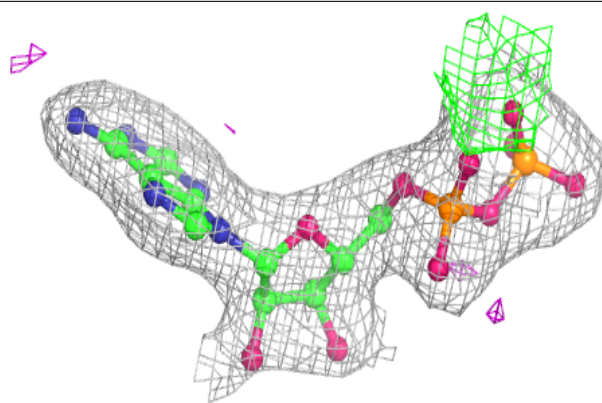
Mol	Type	Chain	Res	Atoms	RSCC	RSR	B-factors(Å <sup>2</sup> )	Q<0.9
2	MG	B	471	1/1	0.88	0.37	31,31,31,31	0
2	MG	C	471	1/1	0.89	0.38	47,47,47,47	0
4	ASP	B	501	9/9	0.92	0.20	41,41,42,43	0
2	MG	D	471	1/1	0.94	0.40	32,32,32,32	0
4	ASP	A	502	9/9	0.94	0.18	42,42,44,46	0
2	MG	A	471	1/1	0.94	0.52	43,43,43,43	0
4	ASP	C	503	9/9	0.94	0.17	35,35,38,38	0
4	ASP	D	504	9/9	0.94	0.13	28,28,29,30	0
3	ADP	B	472	27/27	0.95	0.14	33,37,39,40	0
3	ADP	C	472	27/27	0.95	0.13	38,49,53,54	0
3	ADP	A	472	27/27	0.96	0.13	24,28,31,34	0
3	ADP	D	472	27/27	0.98	0.13	24,26,29,31	0

The following is a graphical depiction of the model fit to experimental electron density of all instances of the Ligand of Interest. In addition, ligands with molecular weight > 250 and outliers as shown on the geometry validation Tables will also be included. Each fit is shown from different orientation to approximate a three-dimensional view.

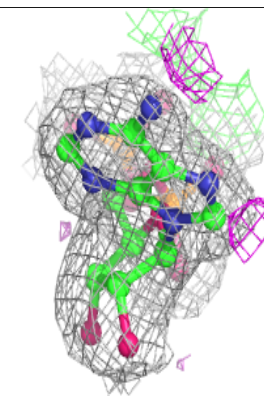
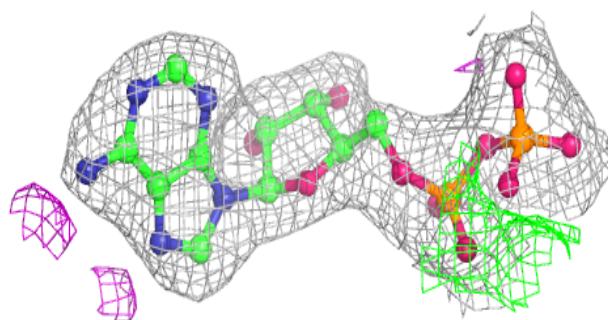
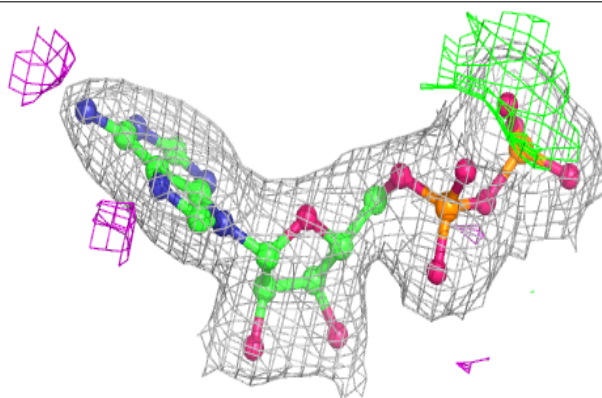


**Electron density around ADP A 472:**

$2mF_o-DF_c$  (at 0.7 rmsd) in gray  
 $mF_o-DF_c$  (at 3 rmsd) in purple (negative)  
and green (positive)

**Electron density around ADP D 472:**

$2mF_o-DF_c$  (at 0.7 rmsd) in gray  
 $mF_o-DF_c$  (at 3 rmsd) in purple (negative)  
and green (positive)



## 6.5 Other polymers [i](#)

There are no such residues in this entry.